

PROSPECTING AND GEOCHEMICAL REPORT *b*  
ON THE  
HIT 1-3 AND MISS CLAIMS  
LOCATED IN THE  
SIMILKAMEEN MINING DIVISION  
92H/10E

(49°41' North and 120°32' West)

**MINERAL RESOURCES BRANCH  
ASSESSMENT REPORT**

**10437**

PROSPECTING AND GEOCHEMICAL REPORT

ON THE

HIT 1-3 AND MISS CLAIMS

LOCATED IN THE

SIMILKAMEEN MINING DIVISION

92H/10E

(49°41' North and 120°32' West)

Owned and Operated by

Canadian Nickel Co. Ltd.  
80 - 10551 Shellbridge Way  
Richmond, B.C. V6X 2W8

Written by

Peter Peto, Ph.D.

May, 1982

## Table of Contents

	<u>Page</u>
1.0 INTRODUCTION	1
1.1 Location, Access, Physiography	1
1.2 Property Definition	1
1.3 Previous History	1
2.0 REGIONAL GEOLOGY	2
3.0 PROPERTY GEOLOGY	2
3.1 Geological Units	2
3.2 Structure	3
3.3 Mineralization and Alteration	3
4.0 GEOCHEMICAL & GEOPHYSICAL SURVEYS	4
4.1 Soil Geochemical Survey	4
4.2 Lithogeochemical Survey	4
4.3 VLF-EM and Magnetometer Orientation Surveys	5
5.0 CONCLUSIONS AND RECOMMENDATIONS	5
6.0 REFERENCES	6
7.0 ITEMIZED COST STATEMENT	
8.0 STATEMENT OF QUALIFICATIONS	

## List of Figures

- Fig. 1 Property Location Map  
Fig. 2 Claim Map

List of Maps

- Map 1      Geology and Lithogeochemistry Map, Scale: 1:5,000  
Map 2      Soil Sample Locations, Scale: 1:5,000  
Map 3      Soil Sample Results - Gold, Scale: 1:5,000  
Map 4      Soil Sample Results - Silver, Scale: 1:5,000  
Map 5      Soil Sample Results - Copper, Scale: 1:5,000  
Map 6      Soil Sample Results - Arsenic, Scale: 1:5,000

Appendix

Analytical Results

## 1.0 INTRODUCTION

This report covers the work done on the MISS claims between July 7-12 and the adjacent HIT #1, #2, and #3 claims between August 8-16, 1981. Prospecting, geological mapping, rockchip sampling, soil sampling surveys and geophysical orientation surveys were carried out by a crew of four based in Princeton, under the supervision of the author.

### 1.1 Location, Access and Physiography

The HIT and MISS claims are situated about 33 kilometres north of Princeton, B.C. (Fig. 1). Access to the properties is via highway #5 and thence by the Summers Creek Road to the HIT #2, and #3 claims or by forestry access road from Dry Lake and the power line access road to the west of Missezula Mountain or via the Adonis Mines road to the southeast side of Missezula Mountain.

The claims cover the summit, 1658 metres above sea level, and eastern slopes of Missezula Mountain, to the Summers Creek valley bottom, 944 metres above sea level. The claim area has a total relief of some 714 metres. The HIT #1 and MISS claims cover gently rolling, heavily glaciated terrain typical of the Thompson Plateau. The HIT #2 and #3 claims cover steep valley slopes with gradients approaching 30 percent on average. The claims are heavily wooded and outcrops are scarce except on the steeper mountain and valley slopes.

### 1.2 Property Definition

The MISS claim (15 units) was staked by the writer on May 23, 1981 and the HIT #1, #2, and #3 claims (16 units) were staked by I. White between July 31 and August 1, 1981. The property consists of the following claim blocks (Figure 2).

<u>Claim Name</u>	<u>Size</u>	<u>Record No.</u>	<u>Recording Date</u>
MISS Claim	5S x 3W	1423 (6)	June 10, 1981
HIT #1	3N x 3W	1489 (8)	August 5, 1981
HIT #2	3N x 1W	1490 (8)	August 5, 1981
HIT #3	4S x 1W	1491 (8)	August 5, 1981

The southern portion of the HIT #3 is in apparent contravention of a prior claim Core 4 (1428(6)). The southeast corner of the MISS claim is covered by prior staking, namely AXE 2000 (1217(11)).

### 1.3 Property History

Portions of the present claims were previously held by Adonis Mines Ltd., AMAX Potash Ltd., Texas Gulf Sulphur Co., and Sheba Copper Mines.

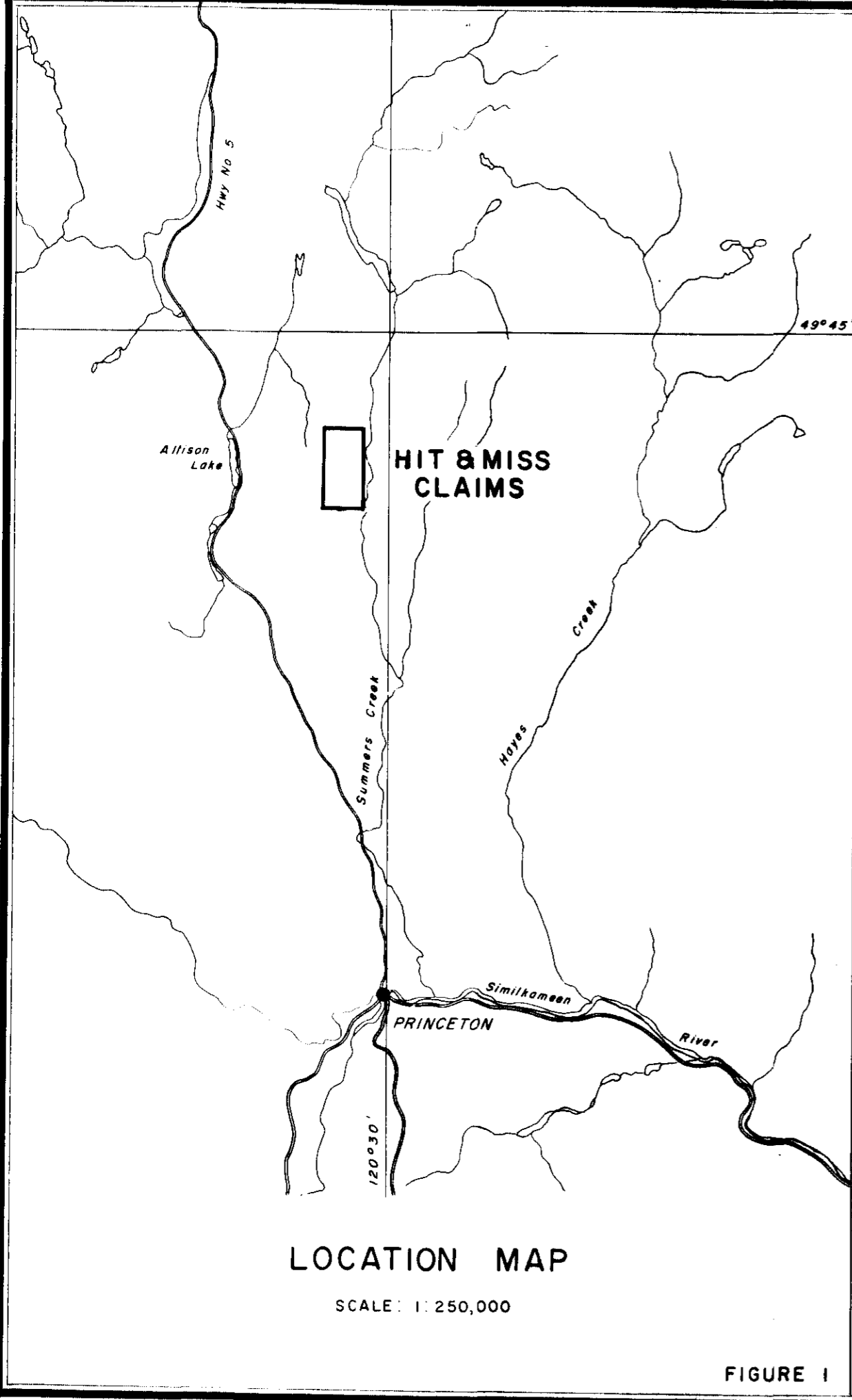


FIGURE 1

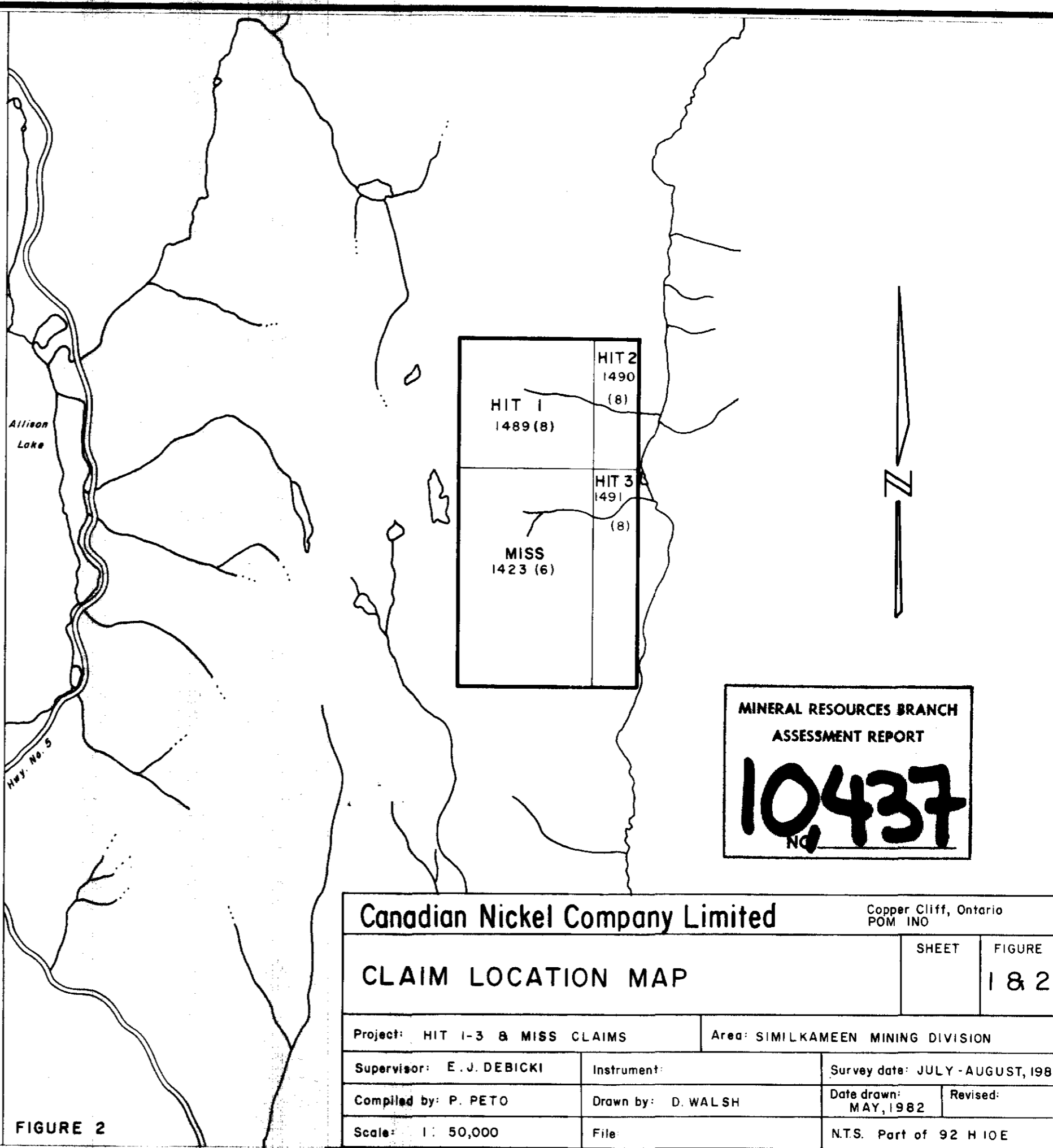


FIGURE 2

<b>Canadian Nickel Company Limited</b>		Copper Cliff, Ontario POM 1NO	
<b>CLAIM LOCATION MAP</b>		SHEET	FIGURE
			1 & 2
Project: HIT 1-3 & MISS CLAIMS		Area: SIMILKAMEEN MINING DIVISION	
Supervisor: E. J. DEBICKI	Instrument:	Survey date: JULY - AUGUST, 1981	
Compiled by: P. PETO	Drawn by: D. WALSH	Date drawn: MAY, 1982	Revised:
Scale: 1: 50,000	File	N.T.S. Part of 92 H 10E	

The claims occupy ground between the 'AXE' Cu-Mo prospect owned by Adonis Mines to the south and the 'RUM' Cu prospect (Christoffersen, 1971) held by AMAX to the north, but no public assessment work appears to have been filed on the ground covering the present claims. Texas Gulf Sulphur undertook reconnaissance soil sampling and mapping of the 'BO' prospect in 1970. The northeast portion of the HIT #1 claim was mapped and sampled by Sheba Copper Mines, (Saleken, 1972).

## 2.0 REGIONAL GEOLOGY

The HIT and MISS claims are underlain by Upper Triassic volcanic rocks belonging to the Nicola group (Rice, 1947). Recent mapping by Preto (1979) indicates that the claim area consists of subareal and submarine andesitic and basaltic flows, breccia, conglomerate and lahar deposits, which have been intruded by coeval dioritic intrusives. The area is geologically similar, and along strike to, the area hosting the Copper Mountain Cu deposit some 50 km to the south. Nicola rocks are disrupted by several large north trending, high angle fault zones.

The HIT and MISS claims lie within the Aspen Grove copper belt, which is well known for numerous copper showings consisting of pyrite + chalcopyrite + bornite + chalcocite mineralization occurring as disseminations, replacements and fracture infillings within Nicola volcanic and sedimentary rocks. Several showings are host associated precious metal values. Two significant copper prospects, namely the 'AXE' and 'RUM' showings occur to the immediate south and north, of the present claims respectively. The AXE property hosts disseminated and fracture controlled pyrite, chalcopyrite and molybdenite in hydrothermally altered volcanic flows and breccias intruded by dioritic dykes and apophyses. The RUM showing consists of pyrite, chalcopyrite and bornite in fracture zones cutting dioritic sills and volcanic flows near branches of Summers Creek fault. The fault system also hosts bornite-chalcopyrite-carbonate fractures cutting altered andesites at the 'BO' showing.

## 3.0 PROPERTY GEOLOGY

The claims were staked on the basis of location and geological environment as mapped by Preto (1979). The claims are underlain largely by massive green, submarine basaltic flows (1A) and associated autoclastic and crumble breccias (1B). The flows and breccias are locally interlayered, with well-bedded, ash and lapilli tuffs (1C). Well-layered, volcanoclastics consisting of tuffaceous arenites and conglomerates and massive to crudely layered lahar deposits (2) occur to the east of the claims. Leucocratic, pyritic, fine grained, felsophyre (3) of uncertain origin, but of presumed Upper Triassic age, also occurs within Unit 1. The above units were intruded by coeval dioritic and syenetic stocks and dykes (Unit 4).

### 3.1 Geological Units

Unit 1A consists of massive green, augite-plagioclase porphyry flows

ranging in composition from alkali basalt to tholeiitic andesite. Low grade greenschist minerals such as epidote, actinolite, chlorite, albite and carbonate are common alteration products.

Unit 1B consists of massive, greyish-green, autoclastic flows and breccias compositionally equivalent to 1A.

Unit 1C consists of pale green, grey and brown, fine to medium grained, well bedded, ash and lithic tuffs with tholeiitic affinities.

Unit 2 consisting of well bedded, volcanic sandstones, siltstones and conglomerates occurs on the lower valley slopes of the HIT #3 claim.

Unit 3, consisting of leucocratic, pyritic, locally sheared, quartz felsophyre, was believed by Preto (1979) to have been intruded into Nicola volcanic flows. However closer examination of relict textures and general geological setting suggests that this lenticular body may possibly represent a local rhyolitic volcanic horizon or dome, within the basic volcanic pile. Unfortunately, both the upper and lower contacts of the felsophyre were either poorly exposed or modified by intense shearing.

Unit 4 is a dark green and grey, massive, medium grained, equigranular diorite or syenite consisting of feldspar, augite, hornblende and magnetite. The intrusives occur as small plugs and dykes and are believed to have been emplaced along pre-existing faults.

### 3.2 Structure

The geological structure of the property is largely controlled by two prominent, north trending faults, namely the Summers Creek and Missezula Mountain fault systems. The Summers Creek fault, confined to the valley bottom, juxtaposes submarine flows of Unit 1 with subareal volcanic sediments of Unit 2.

The Missezula Mountain fault, is a sinuous and branching system that can be traced from the RUM prospect to the north, along the eastern slopes of Missezula Mountain, and southward onto the AXE property. The fault is characterized by crushed, sheared, altered and locally mineralized country rocks. Highly sheared rocks have schistosity trending  $N20^{\circ}W$  to  $N40^{\circ}E$  with vertical to shallow westerly dips. Another very prominent fault scarp, which juxtaposes tuffs of Unit 1C with greenstones of Unit 1A occur on the east side of Missezula Mountain summit. It is characterized by intense carbonate and silica alteration and strikes northerly with moderate westerly dips.

### 3.3 Mineralization and Alteration

Routine prospecting on flagged grid lines has indicated the widespread occurrence of disseminated pyrite in Unit 3, disseminated pyrrhotite in Unit 1C in the vicinity of ON-6W and chalcopyrite-pyrite carbonate veinlets



in Unit 1A in the vicinity of 1N-9E. The most interesting mineralization observed on the property were traces of galena and chalcopyrite associated with disseminated pyrite and quartz veinlets in altered greenstones of Unit 1A in the vicinity of station 18S-3.5E. This area also coincides with anomalous Au, Ag, As and Cu concentrations in adjacent soils. An interpretation of the geology of the area is suggestive of altered, weakly mineralized, greenstones forming the footwall of a rhyolite dome.

#### 4.0 GEOCHEMICAL SURVEY

Detailed soil and rock chip sampling surveys were undertaken along flagged grid lines, running E-W, spaced 200 metres apart, and sampled at 50 metre intervals. A total of 742 soil samples were collected from the 'B' horizon at depths ranging from 5 to 30 centimetres. Some 121 rock samples, consisting of about half kilogram of rock chips, were collected from rock exposures or from nearby float. Geochemical samples were sent to Acme Analytical Laboratories Ltd. for analysis. Samples were analyzed for Cu, Ag, Au and As by atomic absorption methods. Soil samples were dried, sieved to minus 80 mesh, and a 0.5 gram sieve fraction was partially digested with 3 mls of aqua regia in a water bath at 90°C for one hour. Digested samples were diluted with water to 10 mls and analyzed by atomic absorption. Rock samples were crushed to less than 100 mesh and digested in a similar manner. Geochemical results are listed as an appendix to this report.

#### 4.1 Soil Geochemistry

Samples were obtained from podzolic soils developed over transported, glacial overburden on gentle slopes of the plateau and from colluvium on the steeper valley slopes. In general, higher concentrations were obtained from colluvial soils developed along the valley walls than along the upper plateau. This may be in part due to prohibitively thick overburden approaching 10 metres in thickness and semiarid climatic conditions which inhibit metal dispersion by groundwater transpiration.

Several relatively weak soil anomalies are nevertheless apparent, namely: (1) a coincident Cu, As, Au and Ag anomaly covering an area of some 200 x 200 metres centered on station 18S-4E, (2) a large Cu anomaly with weak and erratic precious metal values associated with the area of the 'BO' showing located in the vicinity of 6N-6E, and (3) a poorly defined As, Au, Ag anomaly in the vicinity of 3S-4E. The above anomalies appear to respectively correlate with (1) pyritic greenstones of Unit 1A, (2) fracture controlled sulphides in greenstone adjacent to and with a dioritic plug, and (3) faulted, highly altered greenstones associated with the Missezula Mountain fault zone.

#### 4.2 Lithogeochemical Survey

Rock chip samples generally corroborate the soil survey findings. Several greenstone samples contain anomalous Cu, As, Au and Ag concentrations

in the vicinity of lines 18S and 20S from 2E to 4E. A few samples carry slightly anomalous Ag values in the vicinity of lines 0 and 2S and 4E. Samples collected from the summit area of Missezula Mountain carry from 10 to 20 ppm As and some samples also carry anomalous Cu and Ag concentrations. Only three of 21 samples, collected from Unit 3, carry anomalous concentrations of Cu and Ag. In general, anomalous rock samples occur within, or proximal to, major fault zones.

#### 4.3 VLF-EM and Magnetometer Orientation Surveys

Several orientation profiles across lines 0, 4S, 8S, 12S, 16S and 20S between stations 5E and 5W, using an EM-16 VLF receiver and fluxgate magnetometer. The EM 16, tuned to Cutler, Maine, obtained crossover responses at stations OS-2.55, 8S-0.5W, 8S-3S, 12S-0.25W, 12S-3.25W, 20S-1.25E and 20S-1.5W, and are thought to coincide with underlying fault zones. The magnetometer survey indicated large magnetic contrasts between greenstones and felsophyres, and was useful in delineating the geological contact. Sharp magnetic contrasts were noted at OS-1.5E, 4S-2E, 8S-3E, 12S-2E, 16S-0.75E and 20S-0.75E. Electromagnetic and magnetic readings were not recorded and as such are not included in the costs of this assessment report.

#### 5.0 CONCLUSIONS AND RECOMMENDATIONS

On the basis of the foregoing considerations, concerning the geology and geochemistry of the HIT and MISS claims, the following conclusions have been drawn:

- (1) A pyritic, quartz felsophyre (Unit 3) is considered to represent a rhyolitic horizon within basaltic to andesitic, submarine flows of the Nicola Group.
- (2) The rhyolite horizon is underlain by sheared, highly altered, pyritic greenstones which carry trace amounts of chalcopyrite and galena and anomalous concentrations of Cu, As, Ag and Au in rocks and adjacent soils.
- (3) Scattered and relatively weak, Cu-Ag or As soil anomalies, are associated with the Missezula Mountain fault zone, in the vicinity of co-ordinates 6N-6E and 3S-4E.
- (4) Preliminary EM-16 and ground magnetometer surveys suggest that major fault zones and the greenstone-felsophyre contacts, can be respectively delineated by the above geophysical methods.

The present results appear to be sufficiently encouraging to warrant further, detailed investigation. It is recommended that the following exploration program be undertaken:

- (1) Detailed mapped, prospecting and rock chip sampling of the Missezula Mountain fault zone and the lower felsophyre-greenstone contact.
- (2) Several IP profiles should be run across the rhyolite horizon to test for sulphide-rich zones in the footwall greenstones.

#### 6.0 REFERENCES

- Christoffersen, J. E.; DePaoli, G. M.; and Hodgson, C. J.; (1971):  
Geological, Geochemical and Geophysical report: B.C.D.M. Assessment  
Report #3365.
- Preto, V. (1969): Geology of the Nicola Group between Merritt and Princeton.  
B.C.D.M. Bulletin #69.
- Preto, V. A. (1981): Reconnaissance Rock Geochemistry of the Nicola and  
Kingvale Groups between Merritt and Princeton, B.C.D.M. Paper  
1981-2.
- Rice, H. M. A. (1947): Geology and Mineral Deposits of the Princeton Map-  
area. G.S.C. Memoir 242.
- Saleken, L. W. (1972): Report on the Geology, Geochemistry and Magnetics,  
Princeton Claims, South MDA-RCS and North MDA-CORB Claim Groups.  
B.C.D.M. Assessment Report #4227.

STATEMENT OF EXPENDITURES - 1981-82

HIT #1, #2, #3 and MISS CLAIMS

WAGES

E. J. Debicki	5 days @ 230	\$1,150	
Peter Peto	14 days @ 181	2,534	
Alex Tworo	13 days @ 67	871	
Brian Booth	2 days @ 71	142	
Maria Nitins	9 days @ 78	702	
Jeff Neufeld	13 days @ 71	923	
Robert Arthur	14 days @ 95	1,330	
Dave Walsh	10 days @ 155	<u>1,550</u>	\$ 9,202

PERSONNEL EXPENSES

Accommodation (Town & Travel)		1,728	
Meals (Town & Travel)			
67 man days @ 20 per day		<u>1,340</u>	3,068

TRANSPORTATION

Truck Rental: 2 trucks 14 days @			
110 per day		1,400	
Gasoline		<u>244</u>	1,644

ANALYTICAL

711 soil analysis @ 7.15 each		5,083	
123 rock analysis @ 9.00 each		<u>1,107</u>	6,190

MISCELLANEOUS

Freight		38	
Field Supplies, Maps, Stationary		<u>483</u>	<u>521</u>

Sub-Total \$20,625

J. E. Mullock/nk  
May 28, 1982

AUTHOR'S QUALIFICATIONS

8.0 I, Peter S. Peto, hereby certify as follows:

I am a graduate geologist with B.Sc and M.Sc. degrees from the University of Alberta and a Ph.D. degree from the University of Manchester in England.

I am a registered member, in good standing, of the Geological Association of Canada.

I am presently employed in the capacity of project geologist with Canadian Nickel Company Limited in the Vancouver district office.

I have been practicing my profession since 1970.

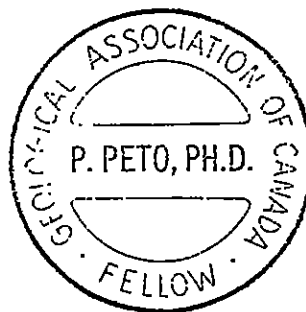
I have prepared this work assessment report on the work performed on behalf of Canadian Nickel Company Limited.

Respectfully submitted,

*Peter Peto*

\_\_\_\_\_  
Peter Peto, Ph.D.

October 23, 1981



APPENDIX  
ANALYTICAL RESULTS



To: Canadian Nickel Co. Ltd.,  
80 - 10551 Shellbridge Way,  
Richmond, B.C.  
V6X 2W9

Assaying & Trace Analysis

852 E. Hastings St., Vancouver, B.C. V6A 1R6

phone: 253 - 3158

File No. 81-0337

File No. \_\_\_\_\_

Type of Samples Rock & Soil

### GEOCHEMICAL ASSAY CERTIFICATE

Disposition \_\_\_\_\_

Attn.: Mr. Peter Peto

SAMPLE No.	Au (5ppb)									
RX 33001	5									1
2	5									2
3	5									3
4	5									4
5	5									5
6	40									6
7	35									7
8	5									8
9	5									9
10	5									10
11	5									11
12	5									12
13	5									13
<del>RX 33014</del>	<del>N.S.</del>									14
SX 33001	5									15
SX 33002	5									16
										17
										18
										19
										20
										21
										22
										23
										24
										25
										26
										27
										28
										29
										30
										31
										32
										33
										34
										35
										36
										37
										38
										39
										40

All reports are the confidential property of clients  
All results are in PPM.

DIGESTION:.....

DETERMINATION:.....

DATE SAMPLES RECEIVED May 7, 1981

DATE REPORTS MAILED May 12, 1981

ASSAYER *Dei*

DEAN TOYE, B.Sc.  
CHIEF CHEMIST  
CERTIFIED B.C. ASSAYER





To: Canadian Nickel Co. Ltd.,  
80 - 10551 Shellbridge Way,  
Richmond, B.C.  
V6X 2W9

ACME ANALYTICAL LABORATORIES LTD.

Assaying & Trace Analysis  
852 E. Hastings St., Vancouver, B. C. V6A 1R6  
phone:253 - 3158

Attn.: Mr. E.J. Debicki  
c.c. Mr. J.F. Church, Copper Cliff, Ontario.

File No. 81-0761  
Type of Samples Soils  
Disposition \_\_\_\_\_

**GEOCHEMICAL ASSAY CERTIFICATE**

Property : MISS CLAIMS Acct.No.: 60825 - 14050

SAMPLE No.	Cu	Ag	As	Au						
SX 62239	24	.1	5	.005						1
62240	18	.1	7	.005						2
62241	22	.1	7	.010						3
62242	18	.1	6	.005						4
62243	19	.1	8	.005						5
62244	28	.1	8	.005						6
62245	23	.1	8	.005						7
62246	19	.1	8	.005						8
62247	78	.2	7	.005						9
62248	11	.1	6	.005						10
62249	16	.1	5	.005						11
62250	29	.1	7	.010						12
62251	75	1.1	77	.010						13
62252	10	.1	4	.005						14
62253	13	.2	4	.005						15
62254	14	.2	5	.005						16
62255	13	.1	7	.005						17
62256	28	.1	19	.005						18
62257	25	.1	7	.005						19
62258	85	.5	7	.005						20
62259	9	.1	4	.005						21
SX 62260	16	.1	5	.005						22
										23
SX 62261	97	.1	12	.040						24
62262	19	.1	4	.005						25
62263	18	.1	5	.010						26
62264	16	.3	5	.005						27
62265	14	.1	5	.005						28
62266	64	.1	8	.010						29
62267	83	.1	16	.005						30
62268	42	.1	17	.005						31
62269	29	.1	16	.010						32
62270	37	.2	20	.005						33
62271	12	.1	4	.005						34
62272	33	.1	6	.005					org.	35
62273	13	.1	2	.005						36
62274	20	.1	7	.005						37
SX 62275	14	.1	4	.005						38
										39
										40

All reports are the confidential property of clients  
All results are in PPM.

DIGESTION:.....

DETERMINATION:.....

DATE SAMPLES RECEIVED July 15, 1981

DATE REPORTS MAILED July 24, 1981

ASSAYER SKO

DEAN TOYE, B.Sc.  
CHIEF CHEMIST  
CERTIFIED B.C. ASSAYER





To: Canadian Nickel Co. Ltd.,

ACME ANALYTICAL LABORATORIES LTD.

Assaying & Trace Analysis

852 E. Hastings St., Vancouver, B. C. V6A 1R6

phone:253 - 3158

File No. 81-0761

### GEOCHEMICAL ASSAY CERTIFICATE

Type of Samples \_\_\_\_\_

Disposition \_\_\_\_\_

SAMPLE No.	Cu	Ag	As	Au						
SX 62276	25	.1	7	.015						1
62277	16	.1	6	.005						2
62278	103	.1	4	.005						3
62279	18	.1	7	.005						4
62280	34	.1	6	.005						5
62281	22	.1	6	.005						6
62282	20	.1	5	.005						7
62283	24	.1	1	.005						8
62284	22	.1	4	.005						9
62285	41	.1	1	.005						10
62286	43	.1	6	.005						11
62287	35	.1	7	.005						12
62288	25	.1	6	.005						13
62289	40	.1	4	.005						14
62290	39	.1	6	.005						15
62291	78	.1	9	.005						16
62292	150	.2	12	.005						17
62293	125	.1	4	.005						18
62294	255	.2	7	.010						19
62295	84	.3	6	.005						20
62296	16	.1	3	.005						21
62297	14	.1	4	.005						22
62298	29	.2	4	.005						23
62299	34	.1	6	.005						24
SX 62300	24	.1	6	.005						25
SX 64170	24	.1	5	.005						26
64171	20	.1	6	.005						27
64172	17	.6	7	.005						28
64173	23	.1	6	.005						29
64174	30	.1	7	.010						30
64175	25	.1	7	.015						31
64176	26	.1	8	.005						32
64177	25	.2	8	.005						33
64178	19	.2	4	.005						34
64179	35	.1	10	.005						35
SX 64180	36	.1	11	.105						36
										37
										38
										39
										40

All reports are the confidential property of clients  
All results are in PPM.

DIGESTION:.....

DETERMINATION:.....

DATE SAMPLES RECEIVED July 15, 1981

DATE REPORTS MAILED July 24, 1981

ASSAYER

*JK*

DEAN TOYE, B.Sc.  
CHIEF CHEMIST  
CERTIFIED D.C. ASSAYER





To: Canadian Nickel Co. Ltd.,

ACME ANALYTICAL LABORATORIES LTD.

Assaying & Trace Analysis

852 E. Hastings St., Vancouver, B. C. V6A 1R6

phone:253 - 3158

File No. 81-0761

Type of Samples

Disposition

GEOCHEMICAL ASSAY CERTIFICATE

4

SAMPLE No.	Cu	Ag	As	Au						
SX- 66118	15	.1	3	.005						1
66119	25	.1	3	.005						2
66120	26	.1	4	.005						3
66121	15	.1	1	.005						4
66122	21	.1	6	.005						5
66123	23	.1	6	.005						6
66124	61	.2	6	.005						7
66125	25	.2	5	.005						8
66126	22	.1	5	.005						9
66127	42	.1	7	.005						10
66128	16	.1	1	.005						11
66129	17	.1	6	.005						12
SX- 66130	15	.1	1	.005						13
										14
SX- 66131	21	.1	3	.005						15
66132	24	.1	8	.005						16
66133	28	.1	9	.005						17
66134	17	.1	5	.005						18
66135	46	.1	11	.010						19
66136	23	.4	22	.005						20
66137	15	.1	6	.005						21
66138	10	.1	4	.005						22
66139	63	.2	7	.005						23
66140	33	.1	1	.005						24
66141	46	.1	8	.015						25
66142	22	.1	3	.005						26
66143	24	.1	4	.005						27
66144	22	.1	3	.005						28
66145	20	.1	4	.005						29
66146	19	.1	3	.005						30
66147	21	.1	6	.005						31
66148	31	.1	5	.005						32
66149	34	.1	6	.010						33
66150	24	.1	3	.005						34
66151	32	.1	6	.005						35
66152	21	.1	4	.010						36
66153	25	.1	6	.005						37
SX- 66154	51	.2	8	.015						38
										39
										40

All reports are the confidential property of clients  
All results are in PPM.

DIGESTION:.....

DETERMINATION:.....

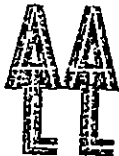
DATE SAMPLES RECEIVED July 15, 1981

DATE REPORTS MAILED July 24, 1981

ASSAYER

CKU

DEAN TOYE, B.Sc.  
CHIEF CHEMIST  
CERTIFIED B.C. ASSAYER



To: Canadian Nickel Co. Ltd.,

ACME ANALYTICAL LABORATORIES LTD.

Assaying & Trace Analysis

852 E. Hastings St., Vancouver, B. C. V6A 1R6

phone: 253 - 3158

File No. 81-0761

Type of Samples

Disposition

### GEOCHEMICAL ASSAY CERTIFICATE

SAMPLE No.	Cu	Ag	As	Au						
SX 66155	65	.1	8	.005						1
66156	41	.1	7	.010						2
66157	47	.1	8	.020						3
66158	119	.3	3	.005						4
66159	61	.5	3	.010						5
SX 66160	61	.2	3	.005						6
SX 66161	77	.1	1	.005						7
66162	22	.2	5	.005						8
66163	30	.1	2	.010						9
66164	21	.1	3	.015						10
66165	22	.1	4	.010						11
66166	17	.1	1	.005						12
66167	19	.1	3	.045						13
66168	19	.1	2	.005						14
66169	20	.1	3	.005						15
66170	20	.1	5	.005						16
66171	22	.1	6	.005						17
66172	32	.1	7	.010						18
66173	29	.1	4	.010						19
66174	25	.1	8	.005						20
66175	23	.1	8	.005						21
66176	34	.1	6	.010						22
66177	14	.1	9	.005						23
66178	17	.1	4	.005						24
66179	41	.3	6	.005						25
SX 66180	20	.1	5	.005						26
SX 66181	24	.1	5	.005						27
66182	20	.1	4	.010						28
66183	24	.1	4	.005						29
66184	29	.1	3	.005						30
66185	514	.2	5	.010						31
66186	190	.4	7	.005						32
66187	42	.1	1	.025						33
66188	108	.4	10	.005						34
66189	96	.2	7	.005						35
SX 66190	62	1.1	14	.005						36
										37
										38
										39
										40

All reports are the confidential property of clients  
All results are in PPM.

DIGESTION: .....

DETERMINATION: .....

DATE SAMPLES RECEIVED July 15, 1981

DATE REPORTS MAILED July 24, 1981

ASSAYER

*DKC*

DEAN TOYE, B.Sc.  
CHIEF CHEMIST  
CERTIFIED B.C. ASSAYER



To: Canadian Nickel Co. Ltd.,

ACME ANALYTICAL LABORATORIES LTD.

Assaying & Trace Analysis

852 E. Hastings St., Vancouver, B. C. V6A 1R6

phone: 253 - 3158

File No. 81-0761

Type of Samples \_\_\_\_\_

Disposition \_\_\_\_\_

**GEOCHEMICAL ASSAY CERTIFICATE**

SAMPLE No.	Cu	Ag	As	Au						
SX 66191	119	.8	6	.005						1
66192	26	.1	4	.005						2
66193	16	.1	3	.005						3
66194	52	.5	7	.005						4
66195	28	.1	5	.005						5
66196	10	.3	3	.005						6
66197	27	.1	5	.005						7
66198	23	.1	6	.005						8
66199	12	.1	1	.005						9
SX 66200	25	.1	2	.005						10
SX 86201	24	.1	4	.005						11
86202	11	.1	5	.005						12
86203	8	.1	1	.005						13
86204	70	.4	12	.005						14
86205	26	2.3	32	.045						15
86206	40	1.0	26	.030						16
86207	48	1.0	23	.035						17
86208	50	.7	17	.020						18
86209	45	.9	28	.015						19
86210	67	.7	38	.015						20
SX 86211	44	.3	36	.010						21
SX 86401	24	.1	8	.005						22
86402	24	.1	2	.005						23
86403	10	.2	1	.005						24
86404	14	.1	3	.010						25
86405	20	.2	1	.010						26
86406	14	.1	4	.005						27
86407	29	.1	3	.005						28
86408	23	.1	3	.005						29
86409	26	.1	5	.005						30
86410	18	.1	1	.005						31
86411	31	.1	4	.005						32
86412	15	.1	3	.005						33
86413	19	.1	4	.005						34
86414	79	.2	28	.010						35
SX 86415	16	.1	10	.005						36
										37
										38
										39
										40

All reports are the confidential property of clients  
All results are in PPM.

DIGESTION:.....

DETERMINATION:.....

DATE SAMPLES RECEIVED July 15, 1981

DATE REPORTS MAILED July 24, 1981

ASSAYER CTE

DEAN TOYE, B.Sc.  
CHIEF CHEMIST  
CERTIFIED B.C. ASSAYER



To: Canadian Nickel Co. Ltd.,

ACME ANALYTICAL LABORATORIES LTD.

Assaying & Trace Analysis

852 E. Hastings St., Vancouver, B. C. V6A 1R6

phone: 253 - 3158

File No. 81-0761

Type of Samples \_\_\_\_\_

Disposition \_\_\_\_\_

### GEOCHEMICAL ASSAY CERTIFICATE

SAMPLE No.	Cu	Ag	As	Au																		
SX 86416	23	.4	0	.005																	1	
86417	29	3.5	108	.005																	2	
86418	9	.2	5	.060																	3	
86419	90	2.9	36	.095																	4	
86420	44	.9	11	.015																	5	
86421	32	1.4	20	.345																	6	
SX 86422	33	.6	9	.005																	7	
																					8	
																						9
																						10
																						11
																						12
																						13
																						14
																						15
																						16
																						17
																						18
																						19
																						20
																						21
																						22
																						23
																						24
																						25
																						26
																						27
																						28
																						29
																						30
																						31
																						32
																						33
																						34
																						35
																						36
																						37
																						38
																						39
																						40

All reports are the confidential property of clients  
All results are in PPM.

DIGESTION:.....

DETERMINATION:.....

DATE SAMPLES RECEIVED July 15, 1981

DATE REPORTS MAILED July 24, 1981

ASSAYER DKS.

DEAN TOYE, B.Sc  
CHIEF CHEMIST  
CERTIFIED D.C. ASSAYER



To: Canadian Nickel Co. Ltd.,

ACME ANALYTICAL LABORATORIES LTD.

Assaying & Trace Analysis

852 E. Hastings St., Vancouver, B. C. V6A 1R6

phone:253 - 3158

File No. 81-0761

Type of Samples Rock

Disposition

### GEOCHEMICAL ASSAY CERTIFICATE

8

SAMPLE No.	Cu	Ag	As	Au							
RX 42629	61	.7	19	.005						BB 1	1
42630	16	.1	5	.005							2
42631	71	.3	16	.005							3
42632	471	.8	1	.005							4
42633	72	.2	15	.005							5
42634	73	.5	20	.005							6
42635	29	.5	1	.005							7
42636	38	.8	2	.005							8
42637	1269	.7	6	.005							9
42638	15	.1	2	.005							10
42639	9	.1	1	.005							11
42640	74	.9	2	.005							12
42641	29	.4	14	.005							13
42642	22	.1	6	.005							14
42643	56	.3	9	.005							15
42644	34	.6	5	.005							16
42645	49	.5	7	.005							17
42646	22	.2	16	.005							18
42647	53	.5	24	.005							19
42648	50	.3	13	.005							20
42649	26	.1	7	.005							21
RX 42650	73	.1	9	.005						BB22	22
											23
RX 42651	75	.2	3	.005						BB23	24
42652	22	.1	3	.005							25
42653	29	.1	8	.005							26
42654	78	.1	5	.005							27
42655	4	.1	1	.005							28
42656	8	.1	2	.005							29
42657	11	.1	4	.005							30
42658	3	.1	1	.005							31
42659	6	.1	1	.005							32
42660	16	.1	1	.005							33
42661	4	.2	1	.005							34
42662	109	.8	7	.005							35
42663	227	.5	17	.005							36
42664	276	1.1	25	.005							37
RX 42665	6	.1	1	.005						BB37	38
											39
											40

All reports are the confidential property of clients  
All results are in PPM.

DIGESTION:.....

DETERMINATION:.....

DATE SAMPLES RECEIVED July 15, 1981

DATE REPORTS MAILED July 24, 1981

ASSAYER *DT*

DEAN TOYE, B.Sc.  
CHIEF CHEMIST  
CERTIFIED B.C. ASSAYER







To: Canadian Nickel Co. Ltd.,  
80 - 10551 Shellbridge Way,  
Richmond, B.C.

V6X 2W9

Attn.: Mr. E.J. Debicki

File No. 81-1070

c.c. Mr. J. Church, Copper Cliff, Ont.

Type of Samples Soil

**GEOCHEMICAL ASSAY CERTIFICATE**

Disposition

Property: HIT & MISS

SAMPLE No.	Cu	Ag	As	Au																
SX 066069	25	.1	5	.005																1
066070	16	.1	1	.005																2
066071	21	.1	4	.005																3
066072	18	.1	4	.005																4
066073	19	.1	4	.005																5
066074	24	.2	6	.005																6
066075	20	.3	4	.020																7
066076	22	.1	6	.005																8
066077	23	.1	2	.005																9
066078	21	.2	5	.005																10
066079	33	.1	7	.005																11
066080	22	.1	5	.005																12
066081	14	.1	2	.005																13
066082	28	.1	5	.005																14
066083	24	.1	4	.005																15
066084	34	.1	4	.005																16
066085	25	.1	4	.005																17
066086	20	.1	4	.005																18
066087	25	.1	5	.005																19
066088	28	.1	5	.005																20
066089	23	.1	5	.005																21
066090	16	.1	4	.005																22
SX 066091	21	.1	4	.005																23
																				24
SX 085999	25	.1	3	.005																25
SX 086000	23	.2	5	.005																26
																				27
SX 086212	19	.1	4	.005																28
086213	23	.1	11	.005																29
086214	23	.1	3	.005																30
086215	18	.1	6	.005																31
086216	23	.1	8	.005																32
086217	20	.1	5	.005																33
086218	19	.1	6	.005																34
086219	20	.1	4	.005																35
086220	22	.1	7	.005																36
086221	7	.1	6	.005																37
086222	25	.1	7	.005																38
SX 086223	23	.1	5	.005																39
																				40

All reports are the confidential property of clients  
All results are in PPM.

DIGESTION:.....

DETERMINATION:.....

DATE SAMPLES RECEIVED Aug. 14, 1981

DATE REPORTS MAILED Aug. 25, 1981

ASSAYER *D. Toyne*

DEAN TOYNE, B.Sc.  
CHIEF CHEMIST  
CERTIFIED B.C. ASSAYER



To: Canadian Nickel Co. Ltd.,

ACME ANALYTICAL LABORATORIES LTD.

Assaying & Trace Analysis

852 E. Hastings St., Vancouver, B. C. V6A 1R6

phone: 253 - 3158

File No. 81-1070

Type of Samples

Disposition

### GEOCHEMICAL ASSAY CERTIFICATE

2

SAMPLE No.	Cu	Ag	As	Au						
SX 086224	23	.1	5	.005						1
086225	26	.1	7	.005						2
086226	22	.1	7	.005						3
086227	23	.1	7	.005						4
086228	38	.1	10	.005						5
086229	21	.1	5	.005						6
086230	13	.1	5	.005						7
086231	23	.1	3	.005						8
086232	20	.1	5	.005						9
086233	30	.1	7	.005						10
086234	30	.1	12	.005						11
086235	22	.1	4	.005						12
086236	30	.1	4	.005						13
086237	28	.1	8	.005						14
086238	23	.1	5	.005						15
086239	20	.1	5	.005						16
086240	26	.1	6	.005						17
086241	19	.1	5	.005						18
086242	17	.1	4	.005						19
086243	25	.1	4	.005						20
086244	23	.1	4	.005						21
086245	27	.1	3	.005						22
086246	19	.1	4	.005						23
086247	33	.1	2	.005						24
086248	16	.1	3	.005						25
086249	14	.1	4	.005						26
SX 086250	16	.1	2	.005						27
										28
SX 086251	4	.1	3	.005						29
086252	20	.2	6	.005						30
086253	12	.1	2	.005						31
086254	23	.1	4	.005						32
086255	9	.1	2	.005						33
086256	22	.1	2	.005						34
086257	17	.1	4	.005						35
086258	43	.1	3	.005						36
086259	9	.1	2	.005						37
SX 086260	18	.1	2	.005						38
										39
										40

All reports are the confidential property of clients  
All results are in PPM.

DIGESTION:.....

DETERMINATION:.....

DATE SAMPLES RECEIVED Aug. 14, 1981

DATE REPORTS MAILED Aug. 25, 1981

ASSAYER Dean Toyne

DEAN TOYNE, B.Sc.  
CHIEF CHEMIST  
CERTIFIED B.C. ASSAYER



To: Canadian Nickel Co. Ltd.,

ACME ANALYTICAL LABORATORIES LTD.

Assaying & Trace Analysis

852 E. Hastings St., Vancouver, B. C. V6A 1R6

phone: 253 - 3158

File No. 81-1070

Type of Samples \_\_\_\_\_

Disposition \_\_\_\_\_

### GEOCHEMICAL ASSAY CERTIFICATE

3

SAMPLE No.	Cu	Ag	As	Au																	
SX 086261	30	.1	9	.010																	1
086262	26	.1	8	.010																	2
086263	22	.1	7	.005																	3
086264	31	.2	10	.005																	4
086265	20	.1	8	.005																	5
086266	30	.2	8	.005																	6
086267	13	.1	6	.005																	7
086268	32	.1	9	.005																	8
086269	22	.1	8	.005																	9
086270	13	.1	4	.005																	10
086271	33	.4	2	.005																	11
086272	22	.1	1	.005																	12
086273	27	.4	5	.005																	13
086274	19	.1	5	.005																	14
086275	13	.1	5	.005																	15
086276	22	.1	5	.005																	16
086277	22	.1	8	.005																	17
086278	8	.1	7	.005																	18
086279	21	.1	7	.005																	19
086280	12	.1	2	.005																	20
086281	17	.1	4	.005																	21
086282	34	.1	2	.005																	22
086283	13	.1	3	.005																	23
086284	21	.1	7	.005																	24
086285	15	.1	7	.005																	25
086286	25	.1	6	.005																	26
086287	26	.1	8	.005																	27
086288	15	.1	4	.005																	28
086289	28	.1	2	.005																	29
086290	23	.1	4	.005																	30
086291	25	.1	5	.010																	31
086292	24	.1	3	.015																	32
086293	19	.1	7	.005																	33
086294	22	.1	8	.005																	34
086295	20	.1	7	.005																	35
086296	24	.1	7	.005																	36
SX 086297	35	.1	5	.005																	37
																					38
																					39
																					40

All reports are the confidential property of clients  
All results are in PPM.

DIGESTION:.....

DETERMINATION:.....

DATE SAMPLES RECEIVED Aug. 15, 1981

DATE REPORTS MAILED Aug. 25, 1981

ASSAYER

*Dean Toye*  
DEAN TOYE, B.Sc.  
CHIEF CHEMIST  
CERTIFIED D.C. ASSAYER



To: Canadian Nickel Co. Ltd.,

ACME ANALYTICAL LABORATORIES LTD.

Assaying & Trace Analysis

852 E. Hastings St., Vancouver, B. C. V6A 1R6

phone: 253-3158

File No. 81-1070

Type of Samples

Disposition

### GEOCHEMICAL ASSAY CERTIFICATE

SAMPLE No.	Cu	Ag	As	Au						
SX 086298	37	.2	6	.005						1
086299	33	.1	7	.005						2
SX 086300	31	.3	6	.005						3
SX 086701	25	.1	5	.005						4
086702	22	.1	5	.005						5
086703	30	.1	4	.005						6
086704	25	.1	5	.005						7
086705	30	.1	6	.005						8
086706	41	.1	0	.005						9
086707	30	.1	3	.005						10
086708	32	.1	5	.005						11
086709	18	.1	5	.005						12
086710	13	.1	2	.005						13
086711	14	.1	3	.005						14
086712	32	.1	2	.005						15
086713	28	.1	2	.005						16
086714	37	.2	7	.005						17
086715	25	.1	4	.005						18
086716	24	.1	2	.005						19
086717	27	.1	5	.010						20
086718	16	.1	3	.005						21
086719	29	.1	0	.005						22
086720	25	.1	8	.005						23
086721	26	.1	5	.005						24
086722	10	.1	4	.005						25
086723	9	.1	2	.005						26
086724	12	.1	2	.005						27
086725	22	.1	4	.005						28
086726	31	.2	6	.005						29
086727	23	.1	3	.005						30
086728	39	.1	7	.005						31
086729	31	.1	9	.005						32
SX 086730	32	.1	8	.005						33
SX 086731	25	.2	7	.005						34
086732	29	.1	7	.005						35
086733	19	.1	5	.005						36
SX 086734	11	.1	4	.005						37
										38
										39
										40

All reports are the confidential property of ACME Analytical Laboratories Ltd.  
All results are in PPM.

DIGESTION: .....

DETERMINATION: .....

DATE SAMPLES RECEIVED Aug. 14, 1981

DATE REPORTS MAILED Aug. 25, 1981

ASSAYER

DEAN TOYE, B.Sc.  
CHIEF CHEMIST  
CERTIFIED B.C. ASSAYER



To: Canadian Nickel Co. Ltd.,

ACME ANALYTICAL LABORATORIES LTD.

Assaying & Trace Analysis

852 E. Hastings St., Vancouver, B. C. V6A 1R6

phone: 253 - 3158

File No. 81-1070

Type of Samples

Disposition

### GEOCHEMICAL ASSAY CERTIFICATE

5	SAMPLE No.	Cu	Ag	As	Au										
SX	086735	12	.1	6	.005										1
	086736	18	.1	5	.005										2
	086737	11	.1	5	.005										3
	086738	7	.1	4	.005										4
	086739	27	.1	7	.005										5
	086740	19	.1	6	.005										6
	086741	23	.1	6	.005										7
	086742	25	.1	4	.005										8
	086743	19	.1	3	.005										9
	086744	23	.1	2	.005										10
	086745	29	.1	2	.005										11
	086746	23	.1	5	.005										12
	086747	28	.1	5	.005										13
	086748	34	.1	6	.005										14
	086749	24	.1	3	.005										15
SX	086750	25	.1	6	.005										16
															17
SX	086751	26	.1	6	.005										18
	086752	20	.1	5	.005										19
	086753	17	.2	3	.005										20
	086754	47	.3	7	.010										21
	086755	19	.1	5	.005										22
	086756	24	.2	5	.075										23
	086757	18	.1	5	.005										24
	086758	26	.1	6	.005										25
	086759	22	.1	5	.005										26
	086760	22	.2	5	.005										27
	086761	31	.1	6	.005										28
	086762	14	.1	2	.005										29
	086763	24	.1	2	.005										30
	086764	22	.1	4	.005										31
	086765	28	.1	4	.010										32
	086766	28	.1	5	.005										33
	086767	43	.1	4	.005										34
	086768	12	.1	6	.010										35
	086769	12	.1	3	.005										36
SX	086770	23	.1	5	.005										37
															38
															39
															40

All reports are the confidential property of clients  
All results are in PPM.

DIGESTION:.....

DETERMINATION:.....

DATE SAMPLES RECEIVED Aug. 14, 1981

DATE REPORTS MAILED Aug. 25, 1981

ASSAYER Dean Toye

DEAN TOYE, B.Sc.  
CHIEF CHEMIST  
CERTIFIED D.C. ASSAYER



To: Canadian Nickel Co. Ltd.,

ACME ANALYTICAL LABORATORIES LTD.

Assaying & Trace Analysis

852 E. Hastings St., Vancouver, B. C. V6A 1R6

phone: 253 - 3158

File No. 81-1070

Type of Samples

Disposition

### GEOCHEMICAL ASSAY CERTIFICATE

SAMPLE No.	Cu	Ag	As	Au											
SX 086771	26	.1	5	.005											1
086772	14	.1	5	.005											2
086773	16	.1	9	.005											3
086774	12	.1	6	.005											4
086775	23	.1	8	.005											5
086776	17	.1	6	.005											6
086777	18	.1	8	.005											7
086778	25	.1	5	.005											8
086779	19	.1	6	.005											9
086780	8	.1	2	.005											10
086781	34	.2	7	.005											11
086782	36	.2	7	.005											12
086783	23	.2	7	.005											13
086784	25	.2	6	.005											14
086785	25	.3	7	.005											15
086786	37	.1	6	.005											16
086787	19	.2	6	.005											17
086788	36	.1	7	.005											18
086789	31	.1	9	.010											19
SX 086790	45	.1	17	.005											20
SX 086791	28	.1	7	.010											21
086792	28	.2	6	.005											22
086793	22	.1	6	.005											23
086794	24	.1	4	.005											24
086795	42	.1	7	.005											25
086796	31	.3	7	.005											26
086797	78	.4	8	.005											27
086798	66	.4	10	.005											28
086799	36	.1	8	.005											29
SX 086800	30	.2	8	.005											30
SX 086912	6	.1	3	.005											31
086913	27	.1	7	.005											32
086914	46	.1	5	.005											33
086915	16	.1	7	.005											34
086916	23	.1	7	.005											35
SX 086917	13	.1	7	.005											36
															37
															38
															39
															40

All reports are the confidential property of clients  
All results are in PPM.

DIGESTION:.....

DETERMINATION:.....

DATE SAMPLES RECEIVED Aug. 14, 1981

DATE REPORTS MAILED Aug. 25, 1981

ASSAYER Dean Toy

DEAN TOYE, B.Sc.  
CHIEF CHEMIST  
CERTIFIED D.C. ASSAYER



To: Canadian Nickel Co. Ltd.,  
80 - 10551 Shellbridge Way,  
Richmond, B.C.  
V6X 2W9

Assaying & Trace Analysis

852 E. Hastings St., Vancouver, B.C. V6A 1R6

phone:253 - 3158

Attn.: Mr. E.J. Debicki  
c.c. Mr. J.F. Church, Copper Cliff, Ont.

File No. 81-1077

Type of Samples Soil & Rock

**GEOCHEMICAL ASSAY CERTIFICATE**

MISS CLAIMS

Disposition \_\_\_\_\_

SAMPLE No.		Cu	Ag	As	Au																	
SX 85749		23	.1	9	.005																1	
85750		37	.1	9	.010																	2
85751		27	.1	9	.005																	3
85752		34	.1	6	.010																	4
85753		27	.1	5	.010																	5
85754		107	.1	10	.005																	6
85755		18	.1	3	.005																	7
85756		29	.1	18	.005																	8
85757		28	.2	11	.010																	9
85758		42	.1	9	.005																	10
85759		9	.1	2	.005																	11
85760		21	.1	7	.005																	12
85761		25	.1	6	.005																	13
85762		32	.1	14	.005																	14
85763		42	.2	10	.005																	15
SX 85764		11	.1	13	.005																	16
RX 33039	R	167	.1	13	.005																	17
33040	R	76	.2	10	.005																	18
RX 33042	R	83	.2	15	.005																	19
																						20
																						21
																						22
																						23
																						24
																						25
																						26
																						27
																						28
																						29
																						30
																						31
																						32
																						33
																						34
																						35
																						36
																						37
																						38
																						39
																						40

All reports are the confidential property of clients  
All results are in PPM.

DIGESTION:.....

DETERMINATION:.....



DATE SAMPLES RECEIVED Aug. 17, 1981

DATE REPORTS MAILED Aug. 24, 1981

ASSAYER Dean Toyé

DEAN TOYE, B.Sc  
CHIEF CHEMIST  
CERTIFIED B.C. ASSAYER



To: Canadian Nickel Co. Ltd.,  
80 - 10551 Shellbridge Way,  
Richmond, B.C.  
V6X 2W9

Assaying & Trace Analysis  
852 E. Hastings St., Vancouver, B. C. V6A 1R6  
phone: 253 - 3158

Attn.: Mr. E. J. Debicki  
c.c. Mr. J. Church, Copper Cliff, Ontario.

File No. 81-1081

Type of Samples Soil

**GEOCHEMICAL ASSAY CERTIFICATE**

Disposition \_\_\_\_\_

Property: Hit & MISS

SAMPLE No.	Cu	Ag	As	Au																
SX 066092	26	.1	3	.005																1
066093	26	.1	6	.005																2
066094	35	.1	8	.005																3
066095	26	.2	6	.005																4
066096	27	.1	5	.005																5
066097	23	.1	8	.010																6
066098	26	.1	6	.010																7
066099	47	.1	4	.005																8
SX 066100	33	.1	11	.005																9
SX 85765	123	.2	7	.005																10
85766	57	.1	5	.005																11
85767	103	.8	11	.005																12
85768	191	.9	7	.010																13
85769	106	.4	6	.010																14
85770	181	.4	2	.005																15
85771	42	.1	4	.005																16
85772	20	.1	2	.005																17
85773	52	.1	2	.005																18
85774	24	.1	2	.050																19
85775	48	.1	3	.005																20
85776	29	.1	3	.005																21
SX 85777	69	.4	12	.010																22
SX 86801	38	.1	3	.005																23
86802	20	.1	3	.005																24
86803	24	.1	5	.020																25
86804	17	.1	2	.005																26
86805	21	.1	2	.005																27
86806	19	.1	4	.010																28
86807	17	.1	6	.025																29
86808	19	.1	2	.005																30
86809	15	.1	3	.010																31
86810	29	.1	8	.010																32
86811	20	.1	5	.020																33
86812	5	.1	2	.005																34
86813	12	.1	4	.005																35
SX 86814	36	.1	3	.005																36
																				37
																				38
																				39
																				40

All reports are the confidential property of clients  
All results are in PPM.

DIGESTION:.....

DETERMINATION:.....

DATE SAMPLES RECEIVED Aug. 17, 1981

DATE REPORTS MAILED Aug. 25, 1981

ASSAYER *D. Toye*

DEAN TOYE, B.Sc.  
CHIEF CHEMIST  
CERTIFIED B.C. ASSAYER





To: Canadian Nickel Co. Ltd.,

ACME ANALYTICAL LABORATORIES LTD.

Assaying & Trace Analysis

852 E. Hastings St., Vancouver, B. C. V6A 1R6

phone: 253 - 3158

File No. 81-1081

Type of Samples

Disposition

### GEOCHEMICAL ASSAY CERTIFICATE

SAMPLE No.	Cu	Ag	As	Au											
SX 86815	11	.1	3	.005											1
86816	9	.1	2	.005											2
86817	126	.3	2	.005											3
86818	48	.3	2	.005											4
86819	12	.1	3	.005											5
86820	11	.1	2	.005											6
86821	71	.4	18	.005											7
86822	75	.4	19	.005											8
86823	67	.2	15	.005											9
86824	106	.9	48	.005											10
86825	47	.1	2	.005											11
86826	25	.1	3	.005											12
86827	24	.1	7	.005											13
86828	21	.1	2	.005											14
86829	36	.1	4	.005											15
SX 86830	10	.1	2	.005											16
SX 86831	8	.1	2	.005											17
86832	10	.1	2	.005											18
86833	21	.1	2	.005											19
86834	19	.1	2	.005											20
86835	38	.1	2	.005											21
86836	62	.1	2	.005											22
86837	43	.1	2	.005											23
86838	17	.1	2	.005											24
86839	182	.7	2	.015											25
86840	11	.1	2	.005											26
86841	26	.1	2	.005											27
86842	7	.1	2	.005											28
86843	45	.1	2	.005											29
86844	38	.1	2	.005											30
86845	46	.1	2	.005											31
86846	93	.2	2	.005											32
86847	143	.2	2	.005											33
86848	103	.1	2	.010											34
86849	260	.1	4	.005											35
SX 86850	166	.2	2	.005											36
															37
															38
															39
															40

All reports are the confidential property of clients  
All results are in PPM.

DIGESTION:.....

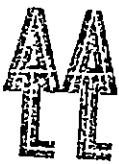
DETERMINATION:.....

DATE SAMPLES RECEIVED Aug. 17, 1981

DATE REPORTS MAILED Aug. 25, 1981

ASSAYER Dean Toyé

DEAN TOYE, B.Sc.  
CHIEF CHEMIST  
CERTIFIED B.C. ASSAYER



To: Canadian Nickel Co. Ltd.,

ACME ANALYTICAL LABORATORIES LTD.

Assaying & Trace Analysis

852 E. Hastings St., Vancouver, B. C. V6A 1R6

phone: 253 - 3158

File No. 81-1081

Type of Samples

Disposition

### GEOCHEMICAL ASSAY CERTIFICATE

SAMPLE No.	Cu	Ag	As	Au									
SX 86851	110	1.2	22	.005									1
86852	136	.8	67	.010									2
86853	151	.8	37	.020									3
86854	64	.8	17	.005									4
86855	15	.2	11	.005									5
86856	34	.3	9	.005									6
86857	40	.1	7	.005									7
86858	44	.1	8	.005									8
86859	50	.2	12	.005									9
86860	65	.4	18	.005									10
86861	20	.1	6	.005									11
86862	136	.8	38	.025									12
86863	47	.2	9	.005									13
86864	8	.1	2	.005									14
86865	18	.3	5	.005									15
86866	22	.1	2	.005									16
86867	14	.1	3	.005									17
86868	17	.1	2	.005									18
86869	8	.1	3	.005									19
SX 86870	126	.1	2	.005									20
SX 86871	61	.3	2	.005									21
86872	77	.1	3	.005									22
86873	132	.1	2	.005									23
86874	15	.1	2	.005									24
86875	14	.1	2	.005									25
86876	31	.1	3	.005									26
86877	4	.1	2	.005									27
86878	23	.1	2	.005									28
86879	33	.1	3	.005									29
86880	26	.1	2	.005									30
86881	21	.1	2	.005									31
86882	28	.1	2	.005									32
86883	20	.1	2	.005									33
86884	16	.1	2	.005									34
86885	22	.1	2	.005									35
86886	56	.1	2	.005									36
SX 86887	48	.1	2	.005									37
													38
													39
													40

All reports are the confidential property of clients  
All results are in PPM.

DIGESTION:.....

DETERMINATION:.....

DATE SAMPLES RECEIVED Aug. 17, 1981

DATE REPORTS MAILED Aug. 25, 1981

ASSAYER

*Dean Toye*  
DEAN TOYE, B.Sc.  
CHIEF CHEMIST  
CERTIFIED B.C. ASSAYER



To: Canadian Nickel Co. Ltd.,

File No. 81-1081

Type of Samples

Disposition

### GEOCHEMICAL ASSAY CERTIFICATE

SAMPLE No.	Cu	Ag	As	Au									
SX 86888	53	.1	2	.030									1
86889	117	.1	3	.005									2
86890	115	.2	7	.020									3
86891	109	.6	5	.015									4
86892	54	.2	7	.005									5
86893	48	.1	2	.005									6
86894	23	.1	2	.005									7
86895	15	.1	2	.005									8
86896	21	.1	2	.005									9
86897	24	.1	2	.005									10
86898	46	.1	4	.005									11
86899	18	.1	2	.005									12
86918	15	.1	2	.015									13
86919	22	.1	2	.010									14
86920	16	.1	3	.005									15
86921	13	.1	3	.010									16
86922	22	.1	2	.390									17
86923	13	.1	3	.010									18
86924	13	.1	2	.010									19
86925	28	.1	3	.010									20
86926	13	.1	2	.005									21
86927	28	.1	2	.015									22
86928	14	.1	2	.005									23
86929	7	.1	2	.005									24
86930	5	.1	2	.005									25
86931	31	.1	3	.005									26
86932	10	.1	2	.005									27
86933	15	.1	3	.005									28
86934	15	.1	5	.005									29
86935	13	.1	2	.010									30
86936	28	.1	3	.015									31
86937	12	.1	3	.005									32
86938	27	.1	4	.005									33
86939	6	.1	4	.005									34
86940	26	.1	13	.005									35
86941	20	.1	2	.015									36
SX 86942	15	.2	3	.005									37
													38
													39
													40

All reports are the confidential property of clients  
All results are in PPM.

DIGESTION:.....

DETERMINATION:.....

DATE SAMPLES RECEIVED Aug. 17, 1981

DATE REPORTS MAILED Aug. 25, 1981

ASSAYER

*Dean Toye*  
DEAN TOYE, B.Sc.  
CHIEF CHEMIST  
CERTIFIED B.C. ASSAYER



To: Canadian Nickel Co. Ltd.,

ACME ANALYTICAL LABORATORIES LTD.

Assaying & Trace Analysis

852 E. Hastings St., Vancouver, B. C. V6A 1R6

phone: 253-3158

File No. 81-1081

Type of Samples \_\_\_\_\_

Disposition \_\_\_\_\_

### GEOCHEMICAL ASSAY CERTIFICATE

SAMPLE No.	Cu	Ag	As	Au							
SX 86943	29	.1	2	.005							1
86944	17	.1	4	.005							2
86945	22	.1	2	.135							3
86946	23	.1	7	.005							4
86947	24	.1	4	.005							5
86948	21	.1	6	.010							6
86949	18	.1	2	.005							7
86950	16	.1	2	.005							8
86951	19	.1	4	.005							9
86952	30	.1	5	.005							10
86953	15	.2	6	.005							11
86954	16	.1	7	.005							12
86955	29	.1	5	.005							13
86956	142	.1	7	.005							14
86957	39	.1	2	.005							15
86958	29	.2	4	.005							16
86959	109	.2	2	.005							17
SX 86960	60	.1	2	.005							18
SX 86961	99	.1	5	.005							19
86962	48	.1	2	.005							20
86963	18	.1	2	.005							21
86964	23	.1	2	.005							22
86965	154	.1	2	.005							23
86966	33	.1	2	.005							24
86967	132	.1	5	.010							25
86968	155	.1	5	.005							26
86969	12	.1	4	.020							27
86970	44	.1	3	.005							28
86971	250	.3	4	.065							29
86972	167	.1	2	.015							30
86973	47	.1	2	.005							31
86974	83	.1	6	.005							32
86975	68	.1	4	.005							33
86976	9	.1	3	.005							34
86977	8	.1	4	.005							35
86978	7	.1	4	.005							36
SX 86979	8	.1	3	.005							37
											38
											39
											40

All reports are the confidential property of clients  
All results are in PPM.

DIGESTION:.....

DETERMINATION:.....

✓

DATE SAMPLES RECEIVED Aug. 17, 1981

DATE REPORTS MAILED Aug. 25, 1981

ASSAYER Dean Toye

DEAN TOYE, B Sc.  
CHIEF CHEMIST  
CERTIFIED D. C. ASSAYER



To: Canadian Nickel Co. Ltd.,

ACME ANALYTICAL LABORATORIES LTD.

Assaying & Trace Analysis

852 E. Hastings St., Vancouver, B. C. V6A 1R6

phone:253 - 3158

File No. 81-1081

Type of Samples

Disposition

### GEOCHEMICAL ASSAY CERTIFICATE

SAMPLE No.	Cu	Ag	As	Au										
SX 86980	9	.1	2	.005										1
86981	.89	.5	6	.005										2
86982	.41	.1	7	.005										3
86983	.21	.1	2	.005										4
86984	.29	.1	4	.005										5
86985	.18	.1	5	.005										6
86986	.13	.1	3	.005										7
86987	.7	.1	2	.005										8
86988	.16	.1	2	.005										9
86989	130	.2	5	.005										10
86990	.19	.1	10	.005										11
86991	.6	.1	4	.005										12
86992	.27	.1	7	.005										13
86993	.14	.1	3	.005										14
86994	.9	.1	3	.005										15
86995	.6	.1	4	.005										16
86996	.5	.1	3	.005										17
86997	.6	.1	5	.005										18
86998	.12	.1	3	.005										19
86999	.7	.1	2	.005										20
SX 87000	.19	.1	2	.005										21
Mn 1	57	.1	5	.010										22
2	15	.1	3	.005										23
3	19	.1	2	.005										24
4	103	.1	5	.005										25
5	108	.1	7	.005										26
6	37	.1	3	.005										27
7	18	.1	2	.005										28
8	36	.1	5	.005										29
9	9	.1	3	.005										30
10	6	.1	3	.010										31
11	4	.1	2	.015										32
12	6	.1	2	.010										33
13	4	.1	2	.005										34
14	7	.1	2	.005										35
15	19	.1	2	.005										36
16	37	.1	2	.005										37
Mn 17	18	.1	6	.005										38
														39
														40

All reports are the confidential property of clients  
All results are in PPM.

DIGESTION:.....

DETERMINATION:.....

DATE SAMPLES RECEIVED Aug. 17, 1981

DATE REPORTS MAILED Aug. 25, 1981

ASSAYER

*D. Toy*  
DEAN TOYE, B.Sc.  
CHIEF CHEMIST  
CERTIFIED B.C. ASSAYER



To: Canadian Nickel Co. Ltd.,

ACME ANALYTICAL LABORATORIES LTD.

Assaying & Trace Analysis

852 E. Hastings St., Vancouver, B. C. V6A 1R6

phone:253 - 3158

File No. 81-1081

### GEOCHEMICAL ASSAY CERTIFICATE

Type of Samples \_\_\_\_\_

Disposition \_\_\_\_\_

SAMPLE No.	Cu	Ag	As	Au						
Mn 18	26	.1	3	.010						1
19	14	.1	4	.005						2
20	111	.5	4	.060						3
21	110	.2	2	.010						4
22	58	.1	3	.005						5
23	77	.1	2	.030						6
24	75	.1	5	.005						7
25	170	.2	6	.015						8
26	53	.1	3	.005						9
27	40	.1	4	.010						10
28	18	.1	2	.005						11
29	14	.1	4	.010						12
30	4	.1	2	.010						13
31	31	.1	3	.010						14
32	14	.1	3	.005						15
33	22	.1	2	.005						16
34	33	.1	3	.005						17
Mn 35	3	.1	2	.005						18
Jn 1	83	.1	4	.005						19
2	190	.1	5	.010						20
3	214	.2	11	.030						21
4	25	.2	6	.005						22
5	57	.4	22	.010						23
6	87	.5	10	.005						24
7	52	5.5	112	.005						25
8	355	.4	18	.015						26
9	86	.6	18	.005						27
10	65	.2	4	.005						28
11	65	.1	2	.005						29
12	34	.1	2	.025						30
13	148	.2	3	.005						31
14	21	.1	2	.005						32
15	55	.1	5	.005						33
16	140	.2	4	.005						34
17	26	.1	2	.020						35
18	23	.1	2	.005						36
Jn 19	10	.1	2	.005						37
										38
										39
										40

All reports are the confidential property of clients  
All results are in PPM.

DIGESTION:.....

DETERMINATION:.....

DATE SAMPLES RECEIVED Aug 17, 1981

DATE REPORTS MAILED Aug 25, 1981

ASSAYER Dean Toye

DEAN TOYE, B.Sc.  
CHIEF CHEMIST  
CERTIFIED B.C. ASSAYER



To: Canadian Nickel Co. Ltd.,

ACME ANALYTICAL LABORATORIES LTD.

Assaying & Trace Analysis

852 E. Hastings St., Vancouver, B. C. V6A 1R6

phone:253 - 3158

File No. 81-1081

Type of Samples

Disposition

### GEOCHEMICAL ASSAY CERTIFICATE

8

SAMPLE No.	Cu	Ag	As	Au										
Jn 20	39	.1	6	.005										1
21	55	.1	10	.005										2
22	15	.1	3	.005										3
23	13	.1	5	.005										4
24	29	.1	7	.010										5
25	46	.1	7	.010										6
26	9	.1	5	.005										7
27	44	.1	14	.015										8
28	10	.1	5	.005										9
29	37	.1	7	.005										10
30	13	.1	5	.005										11
31	37	.1	4	.005										12
32	14	.1	6	.005										13
33	5	.1	3	.005										14
34	14	.1	3	.005										15
35	59	.1	5	.010										16
36	71	.1	9	.020										17
37	14	.1	4	.005										18
38	72	.1	37	.010										19
39	33	.1	5	.005										20
40	54	.1	6	.005										21
Jn 41	32	.1	4	.005										22
														23
														24
														25
														26
														27
														28
														29
														30
														31
														32
														33
														34
														35
														36
														37
														38
														39
														40

All reports are the confidential property of clients  
All results are in PPM.

DIGESTION:.....

DETERMINATION:.....

DATE SAMPLES RECEIVED Aug. 17, 1981

DATE REPORTS MAILED Aug. 25, 1981

ASSAYER

*Dean Toye*  
DEAN TOYE, B.Sc.  
CHIEF CHEMIST  
CERTIFIED D.C. ASSAYER



To: Canadian Nickel Co. Ltd.,

ACME ANALYTICAL LABORATORIES LTD.

Assaying & Trace Analysis

852 E. Hastings St., Vancouver, B. C. V6A 1R6

phone:253 - 3158

File No. 81-1081

Type of Samples Rock

Disposition \_\_\_\_\_

### GEOCHEMICAL ASSAY CERTIFICATE

SAMPLE No.	Cu	Ag	As	Au															
RX 33041	25	.1	3	.025															1
RX 33043	44	.4	5	.005															2
RX 42079	98	.3	5	.005															3
42080	94	.2	7	.010															4
42081	63	.2	11	.005															5
42082	47	.1	2	.005															6
42083	52	.2	2	.005															7
42084	42	.1	3	.005															8
42085	56	.1	2	.010															9
42086	33	.2	2	.005															10
42087	88	.3	2	.005															11
42088	30	.1	2	.005															12
RX 42089	7	.1	2	.005															13
RX 42792	11	.1	2	.005															14
42793	215	.5	5	.010															15
42794	34	.1	3	.005															16
42795	52	.2	5	.005															17
42796	11	.1	4	.005															18
42797	7	.1	3	.005															19
42798	12	.2	4	.005															20
42799	13	.2	5	.005															21
RX 42800	60	.2	4	.005															22
																			23
																			24
																			25
																			26
																			27
																			28
																			29
																			30
																			31
																			32
																			33
																			34
																			35
																			36
																			37
																			38
																			39
																			40

All reports are the confidential property of clients  
All results are in PPM.

DIGESTION:.....

DETERMINATION:.....

DATE SAMPLES RECEIVED Aug. 17, 1981

DATE REPORTS MAILED Aug. 25, 1981

ASSAYER Dean Toyé

DEAN TOYE, B Sc  
CHIEF CHEMIST  
CERTIFIED B.C. ASSAYER



ACME ANALYTICAL LABORATORIES LTD.

852 E HASTINGS ST. VANCOUVER, B.C. V6A 9R6  
(604 ) 253-3158 TELEX 04-53124

ICP GEOCHEMICAL ANALYSES

=====

A .500 GRAM OF SAMPLE IS DIGESTED WITH 3 ML OF 3:1:3 NITRIC ACID TO HYDROCHLORIC ACID TO WATER AT 90 DEG. C FOR 1 HOUR. THE SAMPLE IS DILUTED WITH WATER TO 10.0 MLs. THE RESULTS ARE REPORTED IN PPM EXCEPT FOR : FE, CA, P, MG, BA, AND AL WHICH IS IN PERCENT. THIS LEACH IS PARTIAL FOR: CA, P, MG, AL, TI, LA, AND W. VERY LITTLE BA IS DISSOLVED. IS = INTERNAL STANDARD.

\*

\*HO/RX 33001 CANADIAN NICKEL FILE# 81-0337

EGC *Calcite Bx*

BURN #	GE16	110:03								
IS										
1360										
MO	CU	PB	ZN	AG	NI	CO	MN	FE	AS	
.209	30.3	5.67	54.0	.300	10.2	8.28	406	1.440	<del>5.04</del>	
U	IS	TH	IS	CD	SB	BI	V	CA	P	
<del>83.7</del> <sup>2</sup>	.579	-.11	-3041	2.02	-2.7	4.13	26.9	<u>19.93</u>	.036	
LA	IN	MG	BA	TI	B	AL	IS	IS	W	
4.00	2.15	1.454	.0081	.0049	1.96	.9209	1.67	6.02	2.06	

\*HO/RX 33002

EGC *Mylonite Bx*

BURN #	GE16	110:05								
1360										
.345	9.44	2.48	63.2	.038	10.3	13.6	362	2.212	6.58	
<del>25.2</del> <sup>2</sup>	.501	.492	-831	2.33	-2.8	2.66	49.8	<u>7.911</u>	.109	
6.65	2.43	.5679	.0128	.1439	4.87	.9013	-3.1	<u>2.80</u>	.926	

\*O/RX 33003

EGC *felsite*

BURN #	GE16	110:06								
1360										
1.55	8.02	4.94	155	.216	2.12	1.70	530	1.269	7.45	
1.61	.428	.445	105	.790	.314	1.01	5.01	.2138	.033	
8.21	1.24	.4306	.0150	.0031	1.82	.7682	-25	.759	-.39	

\*O/RX 33004

EGC *felsite*

BURN #	GE16	110:07								
1360										
2.33	14.5	12.6	120	.056	1.42	.978	420	1.120	4.78	
1.12	.310	.045	69.6	.394	-.37	.984	1.65	.1243	.025	
4.92	.522	.1206	.0160	.0007	25.0	.4562	-20	.515	-.09	

\*

\*HO/RX 33005

EGC felsite

BURN # 1 GE16 110:09

IS  
1360

MO	CU	PB	ZN	AG	NI	CO	MN	FE	AS
1.59	4.80	4.12	77.5	.126	1.86	.687	65.0	1.048	2.33
U	IS	TH	IS	CD	SB	BI	V	CA	P
.649	.028	.274	18.4	.425	.191	.411	1.75	.0290	.023
LA	IN	MG	BA	TI	B	AL	IS	IS	W
3.58	.616	.0681	.0165	.0005	1.48	.3823	-12	.400	-.10

\*HO/RX 33006

EGC QZ Augen Chlorite Schist

BURN # 1 GE16 110:12

1360

5.18	59.6	9.83	87.2	1.50	31.2	18.3	611	4.522	12.5
3.86	.096	.234	80.6	1.59	1.92	1.26	69.0	.1439	.081
4.66	-.93	1.593	.0092	.0035	.835	2.737	20.1	1.49	.461

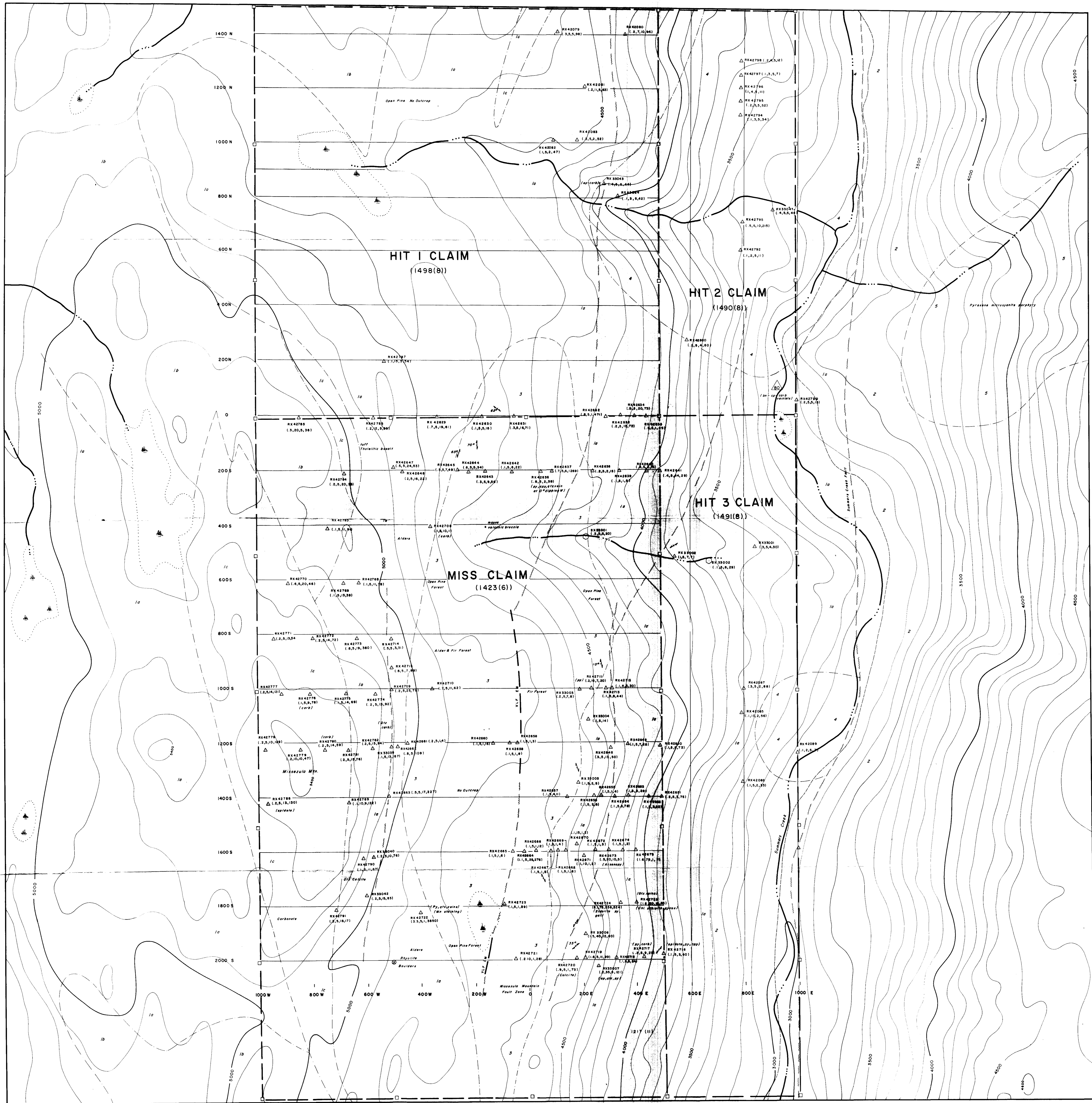
\*HO/RX 33007

EGC GREENSTONE

BURN # 1 GE16 110:13

1360

1.46	121	6.53	45.2	.192	15.4	30.4	631	4.865	5.84
6.71	.332	.759	-7.7	3.33	.435	.414	133	2.538	.101
6.70	1.06	2.108	.0030	.1007	.400	2.818	9.48	2.15	1.11



**LEGEND**

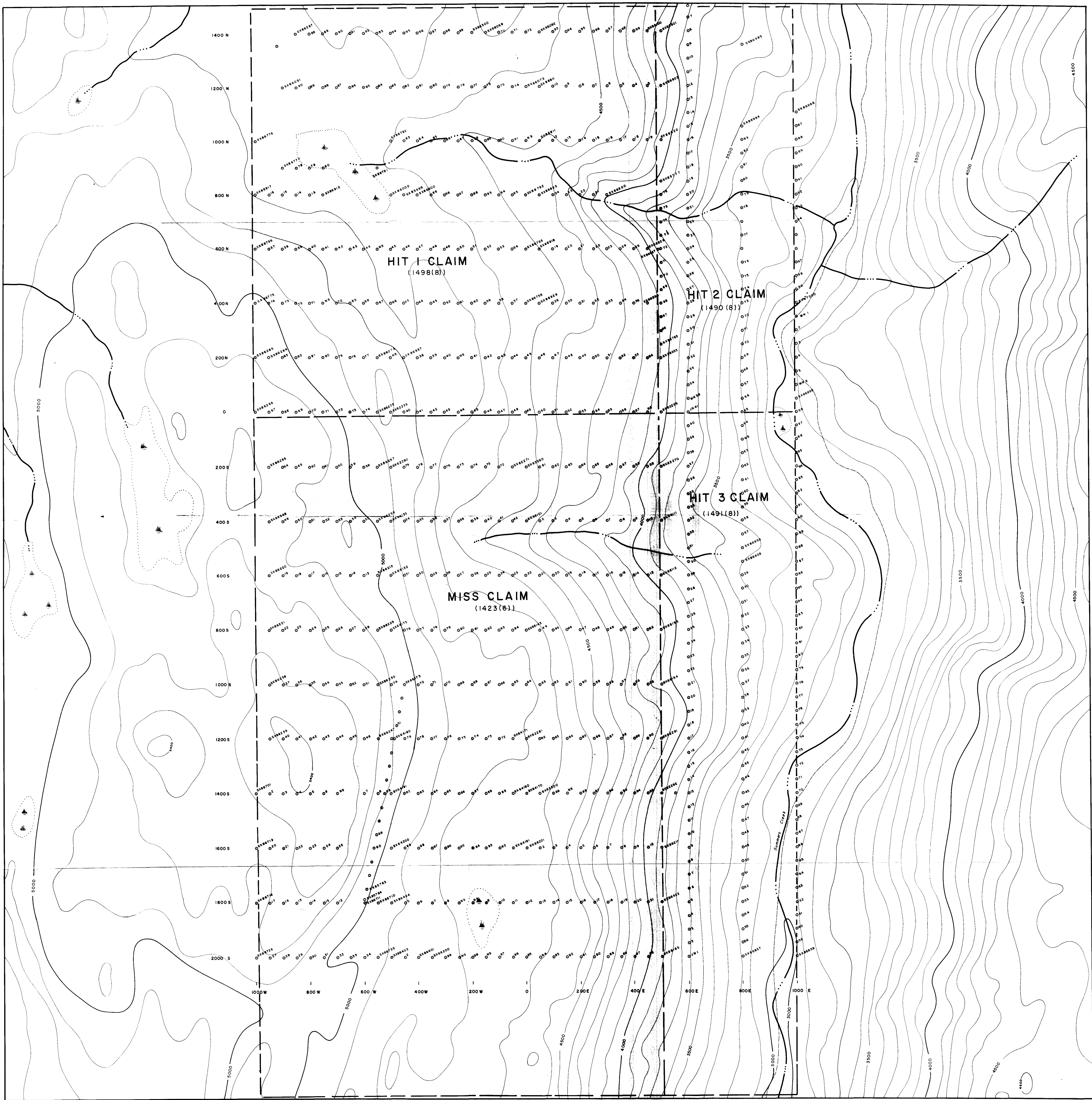
5	Pyroxene microsyenite porphyry
4	Dioritic to syenitic intrusions
3	Quartz-felsophyre (rhyolite)
2	Volcaniclastic arenites, conglomerates
1	la - Augite and plagioclase porphyry flows (basalt and andesite) lb - Autoclastic flows and breccias lc - Ash and lithic tuffs

**SYMBOLS**

---	contact (approximate)
---	schistosity, cleavage
---	fault or shear zone (approximate)
---	EM-16 cross-over
△	(1,5,9,75) = Au ppm, Au ppb, As ppm, Cu ppm RX42650 = sample number py = pyrite, Qz = quartz, gal = galena, carb = carbocelene, bn = bornite
□	claim post
○	stream silt sample (SX33001-01,5,7,7) = Sample number, analytical numbers Ag, Au, As, Cu (ppm)
○	mineral prospect B name
+	outcrop (not sampled)
●	float

MINERAL RESOURCES BRANCH  
ASSESSMENT REPORT  
**10437**

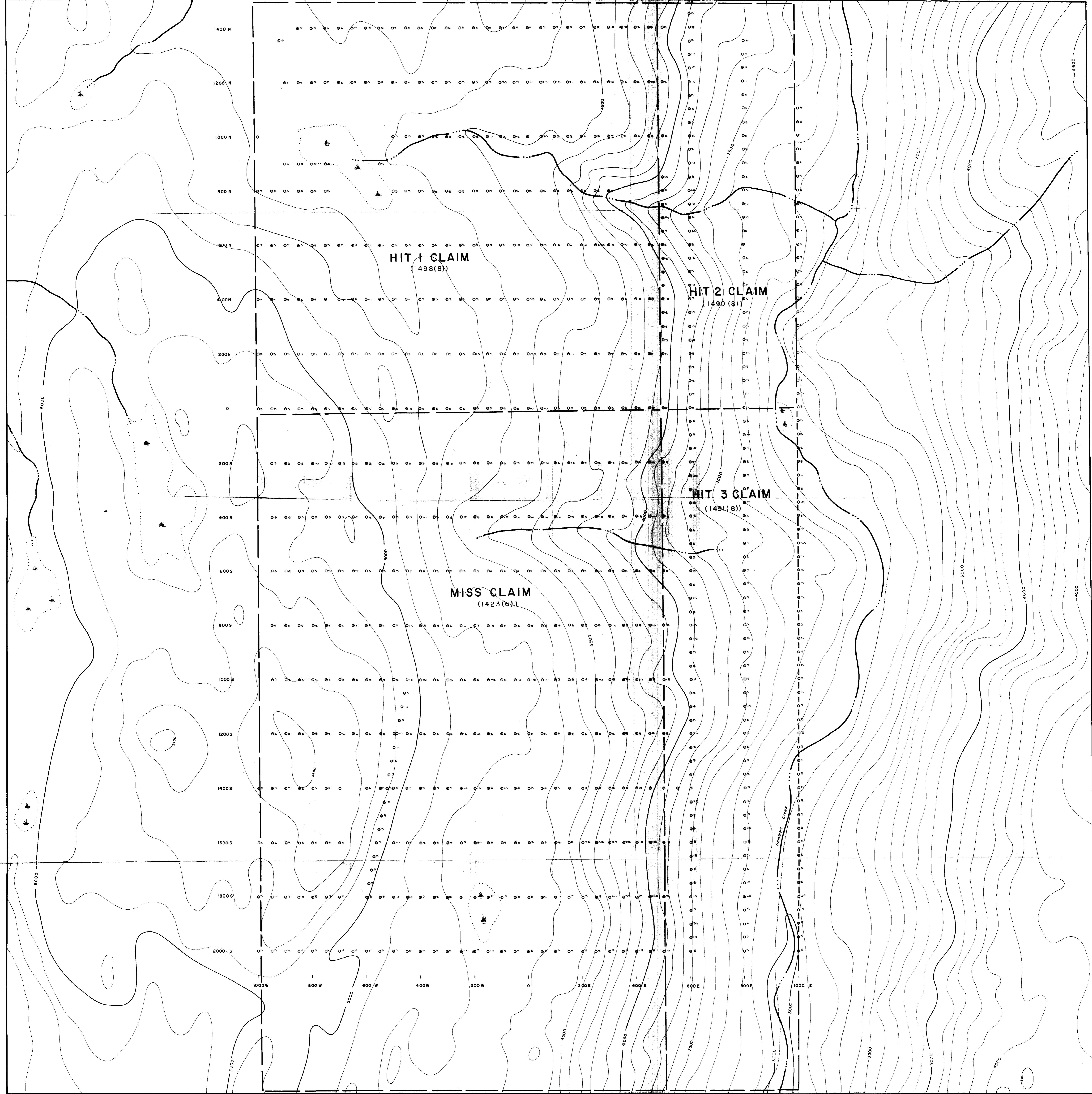
Canadian Nickel Company Limited		Copper Cliff, Ontario POM 100	
GEOLOGY & LITHOGEOCHEMICAL COMPILATION MAP		SHEET	FIGURE
Project: HIT 1-3 & MISS CLAIMS		Area: SIMILKAMEEN MINING DIVISION	
Supervisor: E. J. DEBICKI	Instrument:	Survey date: JULY - AUGUST, 1981	
Compiled by: P. PETO	Drawn by: D. WALSH	Date drawn: MAY, 1982	Revised:
Scale: 1: 5000	File:	N.T.S. Part of 92 H 10E	



○sx#7000 Soil Sample Location and Sample Number

MINERAL RESOURCES BRANCH  
ASSESSMENT REPORT  
**10437**  
NO.

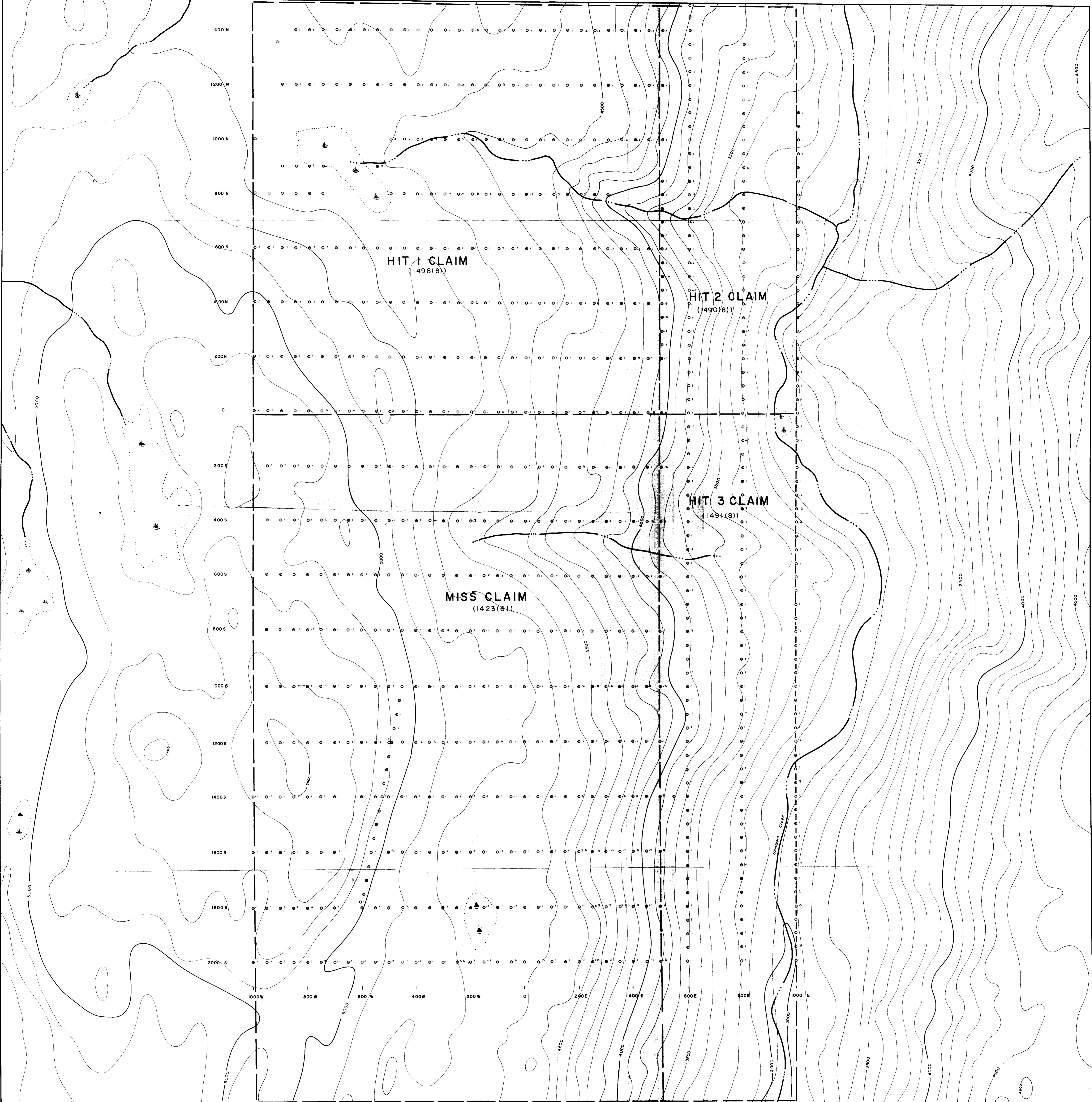
Canadian Nickel Company Limited		Copper Cliff, Ontario POM, INC.	
SOIL SAMPLE LOCATIONS		SHEET	FIGURE
			2
Project: HIT 1-3 & MISS CLAIMS	Area: SIMILKAMEEN MINING DIVISION	Supervisor: E. J. DEBICKI	Instrument:
Compiled by: P. PETO	Drawn by: D. WALSH	Survey date: JULY - AUGUST, 1981	Date drawn: MAY, 1982
Scale: 1:5000	File:	Revised:	NTS. Part of 92 H 10E



○15 Soil sample assay value, Au in parts per billion (ppb)

MINERAL RESOURCES BRANCH  
ASSESSMENT REPORT  
**10437**  
NO

Canadian Nickel Company Limited		Copper Cliff, Ontario POM 1N0	
SOIL SAMPLE ASSAYS GOLD RESULTS (ppb)		SHEET	FIGURE <b>3</b>
Project: HIT 1-3 & MISS CLAIMS		Area: SIMLKAMEEN MINING DIVISION	
Supervisor: E.J. DEBICKI	Instrument:	Survey date: JULY - AUGUST, 1981	
Compiled by: P. PETO	Drawn by: D. WALSH	Date drawn: MAY, 1982	Revised:
Scale: 1:5,000	File:	NTS. Part of 92 H 10E	

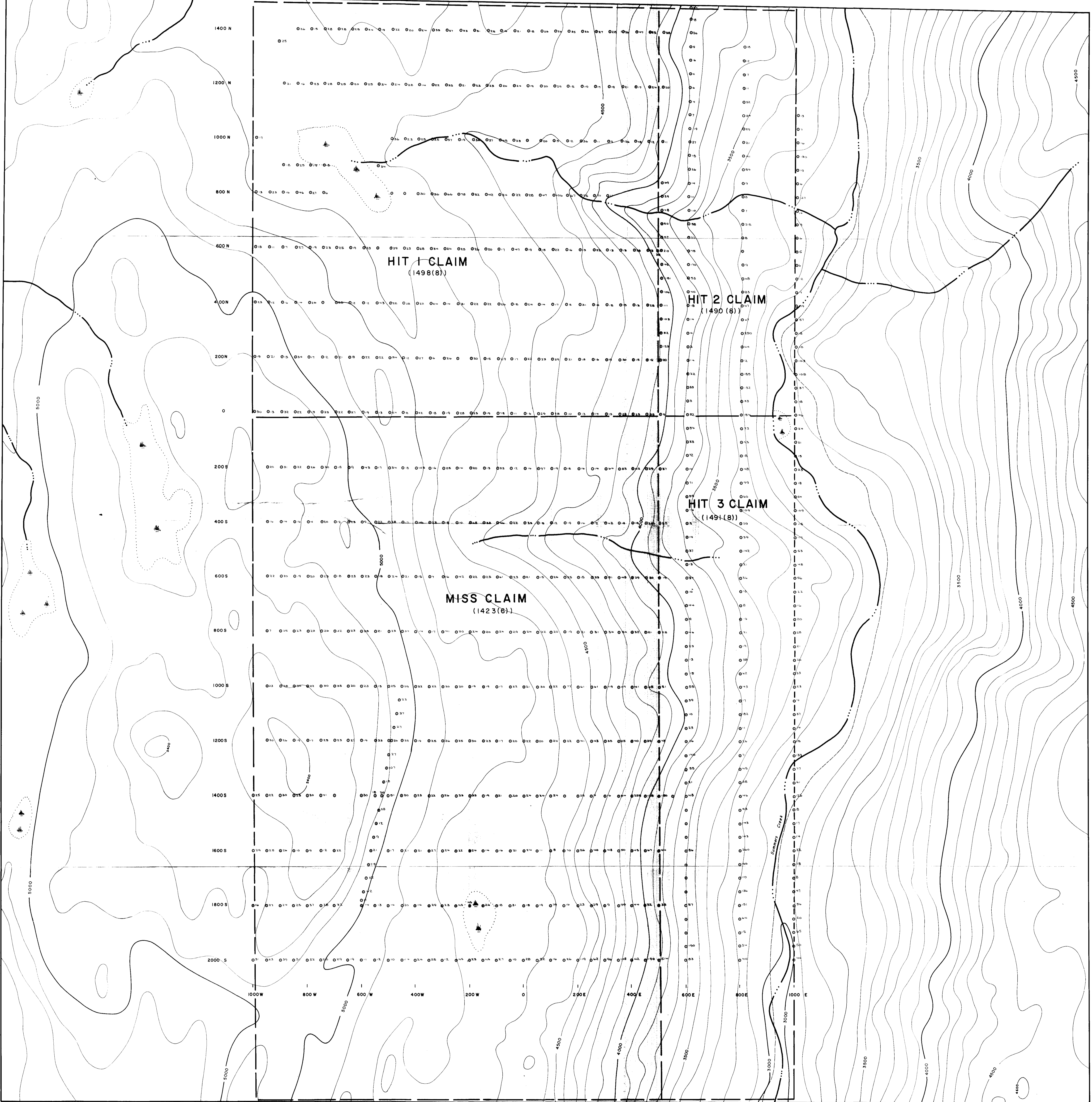


© x0.3 Soil sample assay value, Ag in parts per million (ppm)

MINERAL RESOURCES BRANCH  
ASSESSMENT REPORT  
**10437**  
No.



Canadian Nickel Company Limited		Copper Cliff, Ontario POM 1N0	
SOIL SAMPLE ASSAYS SILVER RESULTS (ppm)			SHEET <b>4</b>
Project: HIT 1-3 & MISS CLAIMS		Area: SIMILKAMEEN MINING DIVISION	
Supervisor: E. J. DEBICKI	Instrument:	Survey date: JULY - AUGUST, 1981	
Compiled by: P. PETO	Drawn by: D. WALSH	Date drawn: MAY, 1982	Revised:
Scale: 1: 5,000	File:	NTS. Part of 92 H 10E	

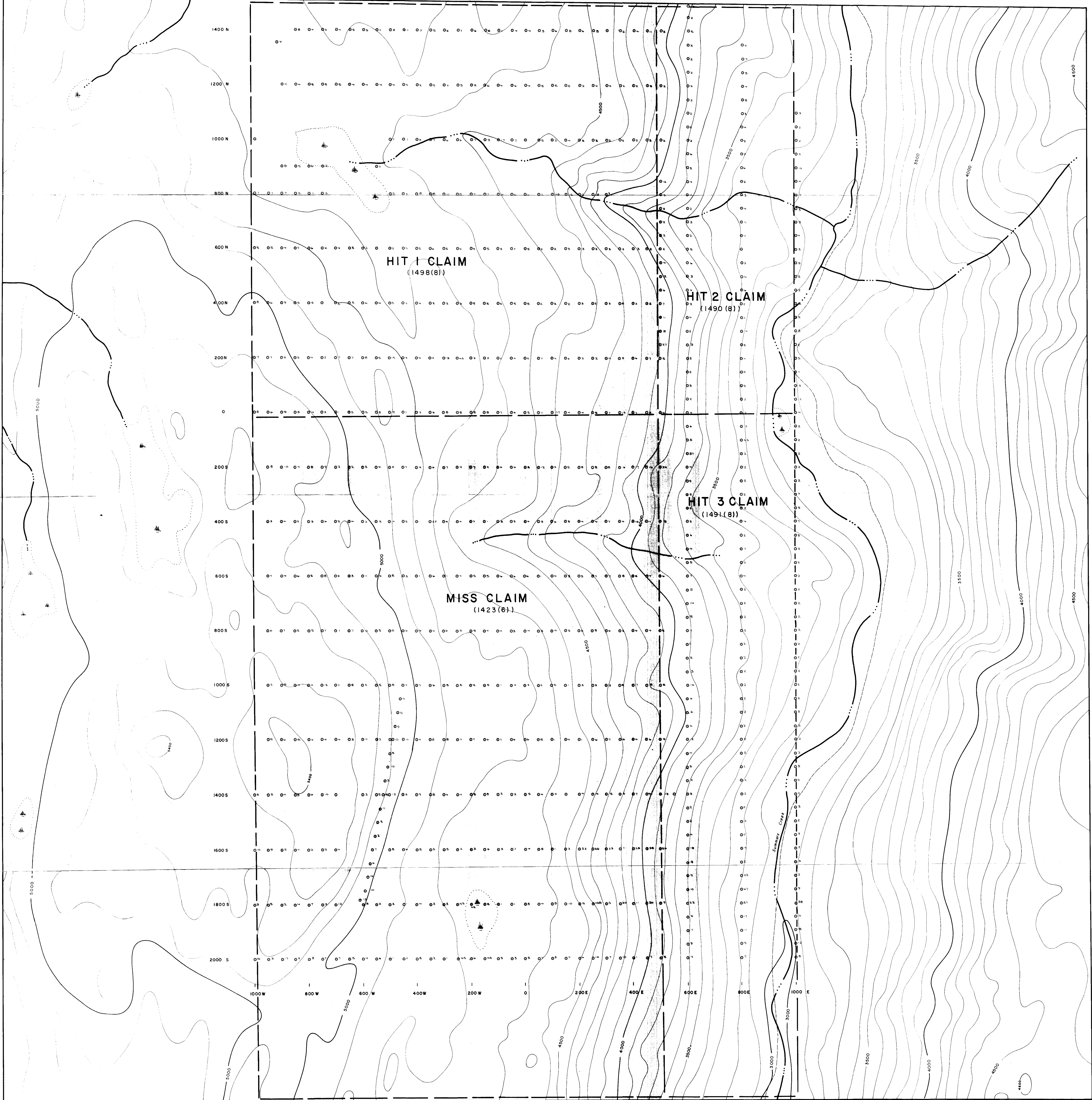


100 > 50 Soil sample assay value, Cu in parts per million (ppm)  
 0 > 100

MINERAL RESOURCES BRANCH  
 ASSESSMENT REPORT  
**10,437**  
 No.



Canadian Nickel Company Limited		Copper Cliff, Ontario	
SOIL SAMPLE ASSAYS		POW 170	
COPPER RESULTS (ppm)		SHEET	FIGURE
Project: HIT 1-3 & MISS CLAIMS		Area: SIMILKAMEEN MINING DIVISION	
Supervisor: E. J. DEBICKI	Instrument:	Survey date: JULY - AUGUST, 1981	
Compiled by: P. PETO	Drawn by: D. WALSH	Date drawn: MAY, 1982	Revised:
Scale: 1:5,000	File:	NTS. Part of 92 H 10E	



20-0=10 ppm Soil sample assay value, As in parts per million (ppm)  
 0=20 ppm

MINERAL RESOURCES BRANCH  
 ASSESSMENT REPORT  
**10,437**

Canadian Nickel Company Limited		Copper Cliff, Ontario POM 1N0	
SOIL SAMPLE ASSAYS		SHEET	FIGURE
ARSENIC RESULT (ppm)		6	
Project: HIT 1-3 & MISS CLAIMS		Area: SIMILKAMEEN MINING DIVISION	
Supervisor: E. J. DEBICKI	Instrument:	Survey date: JULY - AUGUST, 1981	
Compiled by: P. PETO	Drawn by: D. WALSH	Date drawn: MAY, 1982	Revised:
Scale: 1:5,000	File:	NTS. Part of 92 H 10E	