

GEOCHEMICAL AND ELECTROMAGNETIC REPORT

On behalf of

MALABAR MINES LTD.
MACMILLIAN ENERGY CORP.

BUBBLE CLAIM
BLACKDOME MOUNTAIN AREA
CLINTON MINING DIVISION

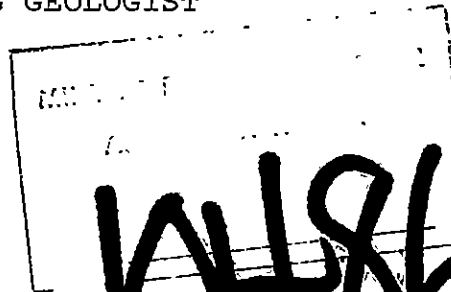
Lat. $51^{\circ}20'N$; Long. $122^{\circ}27'W$
N.T.S. 92 0/8W

Date of Work: July 20 to October 12, 1981

Date of Report: June 15, 1982

by

JAMES G. AGER, B.Sc.
CONSULTING GEOLOGIST



10486

TABLE OF CONTENTS

	<u>PAGE</u>
INTRODUCTION	1
PROPERTY	1
LOCATION AND ACCESS	2
REGIONAL GEOLOGY	2
PROPERTY GEOLOGY	2
SURVEY GRID	3
SOIL GEOCHEMISTRY	4
VLF - ELECTROMAGNETOMETER SURVEY	5
DISCUSSION OF RESULTS	5
STATEMENT OF QUALIFICATIONS	7

ILLUSTRATIONS

Figure 1	CLAIM & LOCATION MAP
Figure 2	GEOCHEMISTRY - GOLD
Figure 3	ELECTROMAGNETOMETER MAP

INTRODUCTION:

Work was carried out on the Bubble Claim to access the potential of finding epithermal gold-bearing vein systems.

This report describes the gridwork, geochemical sampling and electro magnetic surveying performed to evaluate the potential of the claim.

PROPERTY:

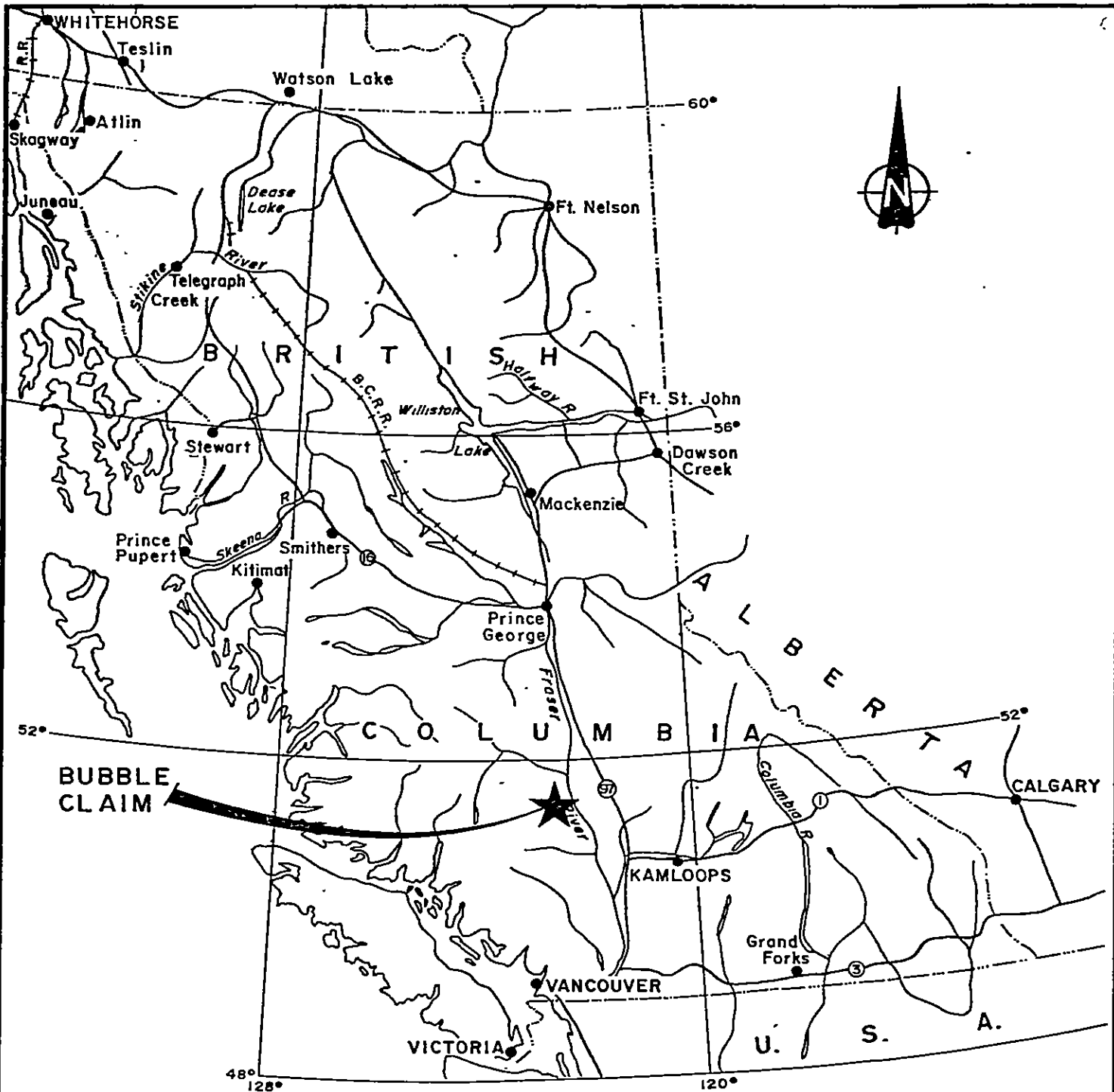
The property is located seventy (70) kilometers west of Clinton, B.C., and consists of a twenty (20) unit, Bubble Claim.

<u>CLAIM NAME</u>	<u>NO. OF UNITS</u>	<u>RECORD NO.</u>	<u>MIN. DIV.</u>	<u>EXPIRY DATE</u>
Bubble	20	352	Clinton	June 29, 1982

The recorded owner of the claim is Malabar Mines Ltd. who have an agreement for lease to MacMillan Energy Corp. for ninety-nine (99) years. This lease, signed November 14, 1980, requires a cash payment of \$1,000.00 per annum and in case of production, ten per cent (10%) of the net profits or \$1,000.00 per annum whichever is greater.

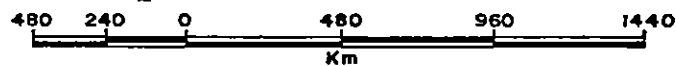
The assessment on the claim has been paid in cash in lieu of work, June, 1980 to June, 1981, so no work was carried out in the 1980 season.

Malabar Mines Ltd. performed a limited amount of gold geochemistry in 1979 on a road traverse and from a grid using the road as a baseline. They collected one hundred and seventy-two (172) soil samples and ten (10) silt samples.



MACMILLAN ENERGY CORP.

LOCATION MAP
OF
—BUBBLE CLAIM—



LOCATION AND ACCESS:

The Bubble Claim is located on the eastern slopes of Black Dome Mountain at the headwaters of Porcupine Creek at $51^{\circ} 20' N$ and $122^{\circ} 27' W$.

Access to the property is available by gravel road leaving Highway #97, eighteen (18) kilometers north of Clinton. The initial fifty (50) kilometers to the Empire Valley Ranch are on well-maintained Government Road. The last thirty (30) kilometers to the property is over the Black Dome Mines access road and requires 4-Wheel Drive in wet weather.

Local precipitous cliffs occur in the Porcupine Creek and tributaries, with relief on the property from 1,460 meters in the Valley to over 1,750 meters along the western boundary.

REGIONAL GEOLOGY:

The Black Dome Mountain area is underlain by a sequence of Tertiary volcanic rocks which range in composition from basalt to rhyolite. Recent basaltic flows overly and cap many of the hills and lower valleys. The rocks are domed into a shallow, north by northeast plunging anticline in the volcanic center to the west. Fracturing along zones of tension caused by this doming has acted as the loci for infilling of epithermal silver-gold mineralization.

PROPERTY GEOLOGY:

The Bubble Claim covers part of the eastern flank of Black Dome Mountain. Detailed mapping is hindered by extensive overburden in much of this area. However, a number of outcrops have allowed a basic outline of the rock in the claim area.

PROPERTY GEOLOGY CONTINUED

The lower most units are exposed in the creek bottom and along some of the cliffs. They are composed mainly of ignimbrites or ash flows. The colour varies from white to light red brown and varies from hard silicified, flow banded tuff to soft and porous ash beds. See: Map Geology. These ignimbrites have a rounded texture (possibly due to reabsorption) and angular coarse fragments (possibly air-borne) and seem to be a combination of both tectonic and sedimentary origin.

Overlying these volcanoclastic sediments is a sequence of dacite, andesite and basalt. On the contact between the rhyolite and basalt, a thin layer of oxidized material consists of fine jasper and small veinlets of hematite.

The general area appears to have been subjected to complex block faulting. The units in the Bubble Claims are similar in sequence to the Black Dome Mountain, but appear to be in a down faulted block.

No epithermal quartz veins were observed in place, but the most areas of interest are covered with heavy overburden.

GRID:

In July of 1981, a crew established 43.3 line kilometers of flagged and compassed grid. A center line control was run through the central portion of the claims, east-west, beginning at the intersection of the claim boundary and the road, (Station 0 + 00). Two (2) other control lines were established, one following the north boundary of the claim and one following the south boundary. Sample lines were run north south through these cross lines.

GRID: CONTINUED

The grid lines were placed at one hundred (100) meter intervals with twenty-five (25) meter sample locations on the western section and two hundred (200) meter spacing, fifty (50) meter sampling on the eastern section.

SOIL GEOCHEMISTRY:

Soil samples were collected along the established grid on one hundred (100) meter line spacing with twenty-five (25) meter sampling in the west section and two hundred (200) meter lines and fifty (50) meter sampling in the east.

Samples were collected from the "B" horizon and marked with their located grid co-ordinates.

A total of 1,575 soil samples were collected and analysed for gold. Analysis was performed by Acme Analytical Laboratories Ltd. of Vancouver. The samples were dried, sieved through -80 mesh, added to hot aqua regis solution and then analysed under atomic absorption spectrophotometry.

The results were plotted; Fig. 2 . Values range from a background of 5 ppb to a high of 1,100 ppb. Results above 100 ppb are considered definitely anomalous (23 locations). Heavy overburden obscures the majority of these samples, so further surface work must be carried out to detail all the sources of the gold bearing rock.

Silver values were not assayed as previous sampling on the Dome Claims and the Bubble Claims showed a uniform low profile.

VLF - ELECTROMAGNETOMETER SURVEY:

The VLF-EM survey was conducted using a Sabre Model 27. This instrument acts as a receiver only. It utilizes the primary electromagnetic fields generated by VLF marine communication stations. These stations have a vertical antenna-current resulting in a horizontal primary field. Thus, this VLF-EM measures the dip-angle of the secondary field induced in a conductor.

Readings were taken on the grid lines at twenty-five (25) meters in the west and fifty (5) meter spacing in the east section. The data has been filtered as described by D.C. Fraser and the results plotted on the map, Figure 3.

This filtered data depicts a number of small anomalies in the southwest section. The creeks in the area show a south-east drainage pattern and VLF-EM conductors are following structure. Correlation of the soil anomalies and VLF-EM is difficult until further physical work is carried out.

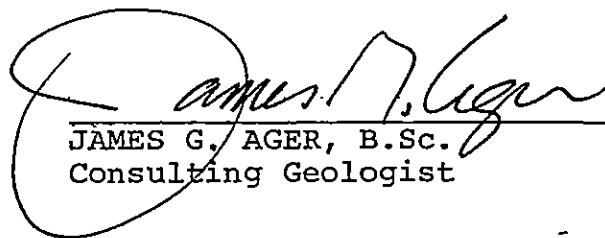
DISCUSSION OF RESULTS:

The 1981 Field Program outlined twenty-three (23) locations of 100 ppb gold or higher in the soil. Heavy overburden in the area obscures the majority of these samples. One location at 900S + 1100E of 0.040 ppb occurs in pyritic rhyolitic ignimbrites. Samples were taken of the rock and will be analysed. Line 8 + 50E at 600S has a rock type change from ignimbrite to andesite. At this interface, into the andesite, two (2) anomalies of 0.035 and 0.075 ppb Gold occur. Two (2) rock outcrops show through the gravel and have been sampled. The rocks are to be made into thin sections and polished sections to determine rock type and possible gold carrying minerals.

The VLF-EM results appeared strongest in the south west section. A number of anomalies occur and appear to have a north-west trend in this area. They appear to follow the trend of the creeks and the general direction of the steep cliffs and indicate probable faulting.

The anomaly in the 950E to 1100E and 800S area occurs at the change of rock type between the ignimbrites and rhyolite lava and the darker andesites and basalts. This area should be investigated further with cat stripping and shallow diamond drilling (overburden covers the majority of the area).

Although no vein systems have been uncovered, or gold values have been found directly, the persistent gold values in the overlying soil and the proximity to the Black Dome Property make the property an excellent exploration target.

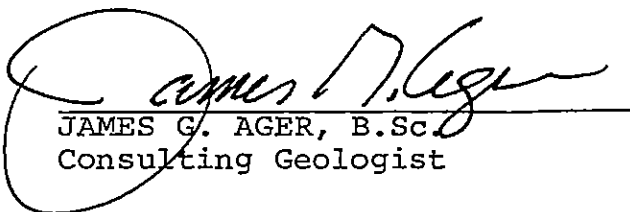

JAMES G. AGER, B.Sc.
Consulting Geologist

STATEMENT OF QUALIFICATIONS

I, James G. Ager, B.Sc., of Vancouver, British Columbia, do hereby state that:

1. I am a Consulting Geologist. I graduated from the University of British Columbia, Canada in 1972.
2. I have worked in the exploration field as follows:
 - Jayco Syndicate; summer season, 1967.
 - Magnetron Mining Ltd.; May, 1968 - September, 1970.
 - Magnetron Mining Ltd.; summer season, 1971.
 - Sibola Mines Ltd.; May, 1972 - October, 1974.
 - Self-employed Consulting Geologist; October, 1974 to present, as Geologist and Project Supervisor for various Mining Companies throughout British Columbia and the Yukon including Pryme Energy Resources Ltd., Azora Minerals Inc., Petersfield Oil & Minerals, and Lansdowne Oil & Minerals Ltd.
3. I have no direct or indirect interest in any manner in either the property or securities of MacMillan Energy Corp., nor do I anticipate to receive any such interest.

DATED AT VANCOUVER, B.C., this 15th day of June, 1982



JAMES G. AGER, B.Sc.
Consulting Geologist

COST BREAKDOWN
FOR GEOCHEMICAL AND
ELECTROMAGNETIC SURVEYS

Dates of Work

July 20 - August 13
October 8 - October 12

<u>Personnel</u>	<u>Dates</u>	<u>Days/Wages</u>	<u>Total</u>
Vern Seel	July 20-Aug 13	22/\$175	\$3,850
Dave Kinney	July 20-Aug 13	22/\$150	3,300
James Ager	July 20-July 27		
	Aug 10-Aug 13	12/\$200	2,400
	Oct 8-12	5/\$200	1,000
Meals, camp, accommodation			3,520
Transportation, gas, truck rental			2,176
Miscellaneous supplies, airphotos			973
Drafting			674
Geochemical Assays			5,372
Report, compilation of results			<u>2,000</u>
		Total	<u>\$25,265</u>

GEOCHEMICAL ASSAYS - GOLD



To: J.G. Ager Consultant,
1318 - 510 W. Hastings St.,
Vancouver, B.C.

Re: MacMillan Energy Ltd.,

File No. 81-0922

Type of Samples Soils

Disposition _____

GEOCHEMICAL ASSAY CERTIFICATE

SAMPLE No.	Au								
BL + 0 E	.005								1
25	.005								2
50	.025								3
75	.005								4
100	.005								5
125	.005								6
150	.120								7
175	.005								8
200	.005								9
225	.005								10
250	.005								11
275	.005								12
300	.005								13
325	.005								14
350	.005								15
375	.005								16
400	.005								17
425	.005								18
450	.005								19
475	.005								20
500	.005								21
525	.005								22
550	.005								23
575	.005								24
600	.005								25
625	.005								26
650	.005								27
675	.005								28
700	.005								29
725	.005								30
750	.005								31
775	.005								32
BL + 800 E	.005								33
									34
BL + 825 E	.005								35
850	.005								36
875	.005								37
BL + 900 E	.005								38
									39
									40

All reports are the confidential property of clients
All results are in PPM.

DIGESTION:.....

DETERMINATION:.....

DATE SAMPLES RECEIVED Aug. 1, 1981

DATE REPORTS MAILED Aug. 8, 1981

ASSAYER SKC

DEAN TOYE, B.Sc.
CHIEF CHEMIST
CERTIFIED B.C. ASSAYER



To: J.G. Ager Consultant
1318 - 510 W. Hastings St.;
Vancouver, B.C.

Assaying & Trace Analysis

852 E. Hastings St., Vancouver, B. C. V6A 1R6

phone:253 - 3158

File No. 81-1181 A
Soils

Type of Samples _____

Disposition _____

GEOCHEMICAL ASSAY CERTIFICATE

SAMPLE No.	Au									
OE 25 N	.015									1
50	.010									2
75	.005									3
100	.005									4
125	.135									5
150	.010									6
175	.040									7
200	.015									8
225	.005									9
250	.005									10
275	.005									11
300	.005									12
325	.005									13
350	.005									14
375	.005									15
400	.005									16
425	.005									17
450	.005									18
475	.005									19
500	.005									20
525	.060									21
550	.005									22
575	.005									23
600	.005									24
625	.005									25
650	.005									26
675	.005									27
700	.005									28
725	.005									29
750	.005									30
775	.005									31
800	.005									32
825	.005									33
850	.005									34
875	.005									35
900	.005									36
OE 925 N	.005									37
										38
										39
										40

All reports are the confidential property of clients
All results are in PPM.

DIGESTION: _____

DETERMINATION: _____

DATE SAMPLES RECEIVED Aug. 25, 1981

DATE REPORTS MAILED Sept. 14, 1981

ASSAYER *D. Toye*

DEAN TOYE, B.Sc.
CHIEF CHEMIST
CERTIFIED B.C. ASSAYER



To: J.G. Ager Consultants

ACME ANALYTICAL LABORATORIES LTD.

Assaying & Trace Analysis

852 E. Hastings St., Vancouver, B. C. V6A 1R6

phone:253 - 3158

File No. 81-1181 A

Type of Samples Soils

GEOCHEMICAL ASSAY CERTIFICATE

Disposition _____

SAMPLE No.	Au									
1E 250 S	.005									1
275	.005									2
300	.005									3
325	.005									4
350	.005									5
375	.005									6
400	.005									7
425	.005									8
450	.020									9
475	.005									10
500	.005									11
525	.005									12
550	.005									13
575	.005									14
600	.005									15
625	.005									16
650	.035									17
675	.005									18
700	.005									19
725	.005									20
750	.005									21
775	.005									22
800	.005									23
825	.010									24
850	.005									25
875	.005									26
900	.005									27
925	.010									28
950	.005									29
975	.005									30
1000	.005									31
1025	.010									32
1050	.005									33
1075	.005									34
1100	.010									35
1125	.005									36
1150	.005									37
1E 1175 S	.015									38
										39
										40

All reports are the confidential property of clients

All results are in PPM.

DIGESTION:.....

DETERMINATION:.....

DATE SAMPLES RECEIVED Aug. 25, 1981

DATE REPORTS MAILED Sept. 14, 1981

ASSAYER Dean Toye

DEAN TOYE, B.Sc.
CHIEF CHEMIST
CERTIFIED B.C. ASSAYER



To: J.G. Ager Consultants

ACME ANALYTICAL LABORATORIES LTD.

Assaying & Trace Analysis

852 E. Hastings St., Vancouver, B.C. V6A 1R6

phone: 253 - 3158

File No. 81-1181 A

Type of Samples Soils

Disposition _____

GEOCHEMICAL ASSAY CERTIFICATE

5

SAMPLE No.	Au								
1E 1200 S	.005								1
1225	.005								2
1250	.005								3
1275	.005								4
1300	.005								5
1325	.005								6
1E 1350 S	.005								7
									8
1E 25 N	.025								9
50	.005								10
75	.005								11
100	.005								12
125	.005								13
150	.005								14
175	.005								15
200	.005								16
225	.005								17
250	.005								18
275	.005								19
300	.005								20
325	.005								21
350	.005								22
375	.005								23
400	.005								24
425	.005								25
450	.005								26
475	.005								27
500	.005								28
525	.005								29
550	.005								30
575	.005								31
600	.005								32
625	.005								33
650	.005								34
675	.005								35
700	.005								36
725	.010								37
1E 750 N	.005								38
									39
									40

All reports are the confidential property of clients
All results are in PPM.

DIGESTION:.....

DETERMINATION:.....

DATE SAMPLES RECEIVED Aug. 25, 1981

DATE REPORTS MAILED Sept. 14, 1981

ASSAYER Dean Toye

DEAN TOYE, B.Sc.
CHIEF CHEMIST
CERTIFIED B.C. ASSAYER



To: J.G. Ager Consultants

ACME ANALYTICAL LABORATORIES LTD.

Assaying & Trace Analysis

852 E. Hastings St., Vancouver, B. C. V6A 1R6

phone:253 - 3158

File No. 81-1181 A

Type of Samples _____

Disposition _____

GEOCHEMICAL ASSAY CERTIFICATE

6	SAMPLE No.	Au								
	1E 775 N	.015								1
	800	.005								2
	825	.005								3
	850	N.S.								4
	875	.005								5
	900	.010								6
	925	.005								7
	950	.005								8
	975	.005								9
	1000	.005								10
	1025	.005								11
	1050	.010								12
	1075	.005								13
	1100	.005								14
	1125	.010								15
	1150	.015								16
	1175	.010								17
	1E 1200 N	.015								18
										19
	2E 25 S	.010								20
	50	.020								21
	75	.005								22
	100	.005								23
	125	.005								24
	150	.005								25
	175	.005								26
	200	.360								27
	225	.005								28
	250	.005								29
	275	.005								30
	300	.005								31
	325	.005								32
	350	.005								33
	375	.005								34
	400	P .005								35
	425	P .005								36
	450	.005								37
	2E 475 S	P .005								38
										39
										40

All reports are the confidential property of clients
All results are in PPM.

DIGESTION:.....

DETERMINATION:.....

DATE SAMPLES RECEIVED Aug. 25, 1981

DATE REPORTS MAILED Sept. 14, 1981

ASSAYER Dean Toye

DEAN TOYE, B.Sc.
CHIEF CHEMIST
CERTIFIED B.C. ASSAYER



To: J.G. Ager Consultants

81-1181 A

File No. _____

Type of Samples Soils

Disposition _____

GEOCHEMICAL ASSAY CERTIFICATE

7

SAMPLE No.	Au									
2E 500 S	.005									1
525	.005									2
550	.005									3
575	.005									4
600	.005									5
625	.005									6
650	.005									7
675	.005									8
700	.005									9
725	.005									10
750	.005									11
775	.010									12
800	.005									13
825	.005									14
850	.005									15
875	.005									16
900	.005									17
925	.005									18
950	.005									19
975	.005									20
1000	.005									21
1025	.005									22
1050	.005									23
1075	.005									24
1100	.005									25
1125	.005									26
1150	.005									27
1175	.005									28
1200	.005									29
1225	.010									30
1250	.005									31
1275	.005									32
1300	.005									33
1325	.005									34
2E 1350 S	.010									35
										36
2E 25 N	.005									37
2E 50 N	.020									38
										39
										40

All reports are the confidential property of clients
All results are in PPM.

DIGESTION: _____

DETERMINATION: _____

DATE SAMPLES RECEIVED Aug. 25, 1981

DATE REPORTS MAILED Sept. 14, 1981

ASSAYER Dean Toye

DEAN TOYE, B.Sc.
CHIEF CHEMIST
CERTIFIED B.C. ASSAYER



To: J.G. Ager Consultants

ACME ANALYTICAL LABORATORIES LTD.

Assaying & Trace Analysis

852 E. Hastings St., Vancouver, B. C. V6A 1R6

phone:253 - 3158

81-1181 A

File No. _____

Type of Samples _____

Disposition _____

GEOCHEMICAL ASSAY CERTIFICATE

SAMPLE No.	Au									
2E 75 N	.005									1
100	.005									2
125	.005									3
150	.005									4
175	.005									5
200	.005									6
225	.005									7
250	.005									8
275	.005									9
300	.005									10
325	.005									11
350	.005									12
375	.005									13
400	.005									14
425	.005									15
450	.010									16
475	.045									17
500	.005									18
525	.005									19
550	.040									20
575	.005									21
600	.005									22
625	.005									23
650	.005									24
675	.005									25
700	.005									26
725	.005									27
750	.005									28
775	.005									29
800	.005									30
825	.005									31
850	.005									32
875	.005									33
900	.005									34
925	.005									35
950	.005									36
2E 975 N	.005									37
										38
										39
										40

All reports are the confidential property of clients
All results are in PPM.

DIGESTION:.....

DETERMINATION:.....

DATE SAMPLES RECEIVED Aug. 25, 1981

DATE REPORTS MAILED Sept. 14, 1981

ASSAYER Dean Toye

DEAN TOYE, B.Sc.
CHIEF CHEMIST
CERTIFIED B.C. ASSAYER



To: J.G. Ager Consultant

File No. 81-1181 A

Type of Samples Soils

Disposition

GEOCHEMICAL ASSAY CERTIFICATE

SAMPLE No.	Au									
2E + 1000 N	P .005									1
1025	.005									2
1050	.005									3
1075	.005									4
1100	.005									5
1125	.005									6
2E 1150 N	.005									7
										8
3E 25 S	.005									9
50	.005									10
75	.005									11
100	.005									12
125	.005									13
150	.005									14
175	.010									15
200	.045									16
225	.005									17
250	.005									18
275	.005									19
300	.005									20
325	.005									21
350	.005									22
315	.005									23
400	.005									24
425	.005									25
450	.005									26
475	.005									27
500	.115									28
525	.005									29
550	.005									30
575	.005									31
600	.005									32
625	.015									33
650	.005									34
675	.005									35
700	.005									36
725	.005									37
3E 750 S	.005									38
										39
										40

All reports are the confidential property of clients
All results are in PPM.

DIGESTION:.....

DETERMINATION:.....

DATE SAMPLES RECEIVED Aug. 25, 1981

DATE REPORTS MAILED Sept. 14, 1981

ASSAYER *D. Toye*

DEAN TOYE, B.Sc.
CHIEF CHEMIST
CERTIFIED B.C. ASSAYER



To: J.G. Ager Consultants

ACME ANALYTICAL LABORATORIES LTD.

Assaying & Trace Analysis

852 E. Hastings St., Vancouver, B. C. V6A 1R6

phone:253 - 3158

File No. 81-1181 A

Type of Samples Soils

GEOCHEMICAL ASSAY CERTIFICATE

Disposition

10

SAMPLE No.	Au								
3E 775 S	.060								1
800	.020								2
825	.005								3
850	.135								4
875	.010								5
900	.010								6
925	.005								7
950	.005								8
975	.015								9
1000	.110								10
1025	.015								11
1050	.020								12
1075	.010								13
1100	.005								14
1125	.010								15
1150	.015								16
1175	.010								17
1200	.015								18
1225	.010								19
1250	.005								20
1275	.035								21
1300	.015								22
3E 1325 S	.005								23
									24
3E 25 N	.015								25
50	.010								26
75	.005								27
100	.005								28
125	.005								29
150	.010								30
175	.165								31
200	.005								32
225	.005								33
250	.010								34
275	.005								35
300	.005								36
325	.100								37
3E 350 N	.005								38
									39
									40

All reports are the confidential property of clients
 All results are in PPM.
 DIGESTION:.....
 DETERMINATION:.....

DATE SAMPLES RECEIVED Aug. 25, 1981
 DATE REPORTS MAILED Sept. 14, 1981
 ASSAYER Al Toye
 DEAN TOYE, B.Sc.
 CHIEF CHEMIST
 CERTIFIED B.C. ASSAYER



To: J.G. Ager Consultants

File No. 81-1181 A

Type of Samples Soils

Disposition

GEOCHEMICAL ASSAY CERTIFICATE

SAMPLE No.	Au									
3E 375 N	.005									1
400	.005									2
425	.005									3
450	.005									4
475	.030									5
500	.005									6
525	.005									7
550	.005									8
575	.005									9
600	.005									10
625	.005									11
650	.005									12
675	.005									13
700	.075									14
725	N.S.									15
750	N.S.									16
775	.005									17
800	.005									18
825	.005									19
825A	.020									20
850	.005									21
875	.010									22
900	.005									23
925	.005									24
950	.005									25
975	.005									26
1000	.005									27
1025	.480									28
1050	.005									29
1075	.010									30
1100	.005									31
1125	.005									32
3E 1150 N	.050									33
										34
3.5E 25 N	.010									35
50	.005									36
75	.005									37
100	.010									38
3.5E 125 N	.005									39
										40

All reports are the confidential property of clients
All results are in PPM.

DIGESTION:.....

DETERMINATION:.....

DATE SAMPLES RECEIVED Aug. 25, 1981

DATE REPORTS MAILED Sept. 14, 1981

ASSAYER *Dean Toy*

DEAN TOYE, B.Sc.
CHIEF CHEMIST
CERTIFIED B.C. ASSAYER



To: J.G. Ager Consultant

ACME ANALYTICAL LABORATORIES LTD.

Assaying & Trace Analysis

852 E. Hastings St., Vancouver, B. C. V6A 1R6

phone:253 - 3158

File No. 81-1181 A

Type of Samples Soils

GEOCHEMICAL ASSAY CERTIFICATE

Disposition

12

SAMPLE No.	Au									
3.5E 150 N	.005									1
175	.005									2
200	.010									3
225	.005									4
250	.005									5
275	.005									6
300	.005									7
325	.005									8
350	.150									9
375	.005									10
400	.010									11
425	.010									12
450	.005									13
475	.010									14
500	.005									15
525	.005									16
550	.005									17
575	.005									18
600	.005									19
625	.005									20
650	.005									21
675	.005									22
700	.045									23
725	.005									24
750	.005									25
775	.700									26
800	.005									27
825	.010									28
850	N.S.									29
875	.005									30
900	.070									31
925	.005									32
950	.005									33
975	.010									34
1000	.005									35
1025	.005									36
3.5E 1050 N	.005									37
										38
										39
										40

All reports are the confidential property of clients
All results are in PPM.

DIGESTION:.....

DETERMINATION:.....

DATE SAMPLES RECEIVED Aug. 25, 1981

DATE REPORTS MAILED Sept. 14, 1981

ASSAYER D. Toye

DEAN TOYE, B.Sc.
CHIEF CHEMIST
CERTIFIED B.C. ASSAYER



To: J.G. Ager Consultants

ACME ANALYTICAL LABORATORIES LTD.

Assaying & Trace Analysis

852 E. Hastings St., Vancouver, B. C. V6A 1R6

phone:253 - 3158

File No. 81-1181 A

Type of Samples Soils

Disposition

GEOCHEMICAL ASSAY CERTIFICATE

13

SAMPLE No.	Au								
3.5E 1075 N	.005								1
1100	.005								2
1125	.005								3
3.5E 1150 N	.005								4
									5
4. E 25	.010								6
50	.005								7
75	.005								8
100	.005								9
125	.005								10
150	.005								11
175	.010								12
200	.005								13
225	.005								14
250	.005								15
275	.005								16
300	.005								17
325	.015								18
350	.005								19
375	.005								20
400	.005								21
425	.005								22
450	.005								23
475	.005								24
500	.005								25
525	.005								26
550	.005								27
575	.015								28
600	.005								29
625	.005								30
650	.005								31
675	.010								32
700	.010								33
725	.005								34
750	.005								35
775	.005								36
800	.005								37
825	.005								38
4. E 850 S	.015								39
									40

All reports are the confidential property of clients
All results are in PPM.

DIGESTION:.....

DETERMINATION:.....

DATE SAMPLES RECEIVED Aug. 25, 1981

DATE REPORTS MAILED Sept. 14, 1981

ASSAYER Dean Toyne

DEAN TOYE, B.Sc.
CHIEF CHEMIST
CERTIFIED B.C. ASSAYER



To: J. G. Ager Consultants

ACME ANALYTICAL LABORATORIES LTD.

Assaying & Trace Analysis

852 E. Hastings St., Vancouver, B. C. V6A 1R6

phone:253 - 3158

File No. 81-1181 A

Type of Samples Soils

Disposition _____

GEOCHEMICAL ASSAY CERTIFICATE

14

SAMPLE No.	Au								
4.5E 25 N	.005								1
50	.005								2
75	.350								3
100	.005								4
125	.005								5
150	.005								6
175	.005								7
200	.005								8
225	.010								9
250	.005								10
275	.005								11
300	.005								12
325	.005								13
350	.005								14
375	.005								15
400	.005								16
425	.010								17
450	.005								18
475	.005								19
500	.005								20
525	.005								21
550	.005								22
575	.005								23
600	.005								24
625	.005								25
650	.005								26
675	.030								27
700	.020								28
725	.025								29
750	.005								30
775	.050								31
800	.005								32
825	.005								33
850	NS								34
875	.005								35
900	.005								36
4.5E 925	.005								37
									38
									39
									40

All reports are the confidential property of clients
All results are in PPM.

DIGESTION:.....

DETERMINATION:.....

DATE SAMPLES RECEIVED Aug. 25, 1981

DATE REPORTS MAILED Sept. 14, 1981

ASSAYER Dean Toye

DEAN TOYE, B.Sc.
CHIEF CHEMIST
CERTIFIED B.C. ASSAYER



To: J.G. Ager Consultants

File No. 81-1181 A

Type of Samples _____

Disposition _____

GEOCHEMICAL ASSAY CERTIFICATE

16

SAMPLE No.	Au																				
5 E 225 S	.025																				1
250	.005																				2
275	.005																				3
300	.005																				4
325	.005																				5
350	.005																				6
375	.005																				7
400	.005																				8
425	.005																				9
450	.005																				10
475	.005																				11
500	.005																				12
525	.005																				13
550	.005																				14
575	.005																				15
600	.020																				16
625	.010																				17
650	.010																				18
675	.010																				19
700	.005																				20
725	.005																				21
750	.045																				22
770	.005																				23
800	.005																				24
825	.005																				25
5 E 850 S	.005																				26
																					27
5.5 E 25 N	.005																				28
50	.015																				29
75	.005																				30
100	.005																				31
125	.005																				32
150	.005																				33
175	.005																				34
200	.005																				35
225	.005																				36
250	.005																				37
5.5 E 275 N	.005																				38
																					39
																					40

All reports are the confidential property of clients
All results are in PPM.

DIGESTION:.....

DETERMINATION:.....

DATE SAMPLES RECEIVED Aug. 25, 1981

DATE REPORTS MAILED Sept. 14, 1981

ASSAYER *Dean Toye*

DEAN TOYE, B.Sc.
CHIEF CHEMIST
CERTIFIED B.C. ASSAYER



To: J.G. Ager Consultant
1318 - 510 W. Hastings St.,
Vancouver, B.C.

File No. 81-1181 B

Type of Samples Soils

Disposition _____

GEOCHEMICAL ASSAY CERTIFICATE

1

SAMPLE No.	Au								
5.5E + 300 N	.005								1
325	.005								2
400	.005								3
425	.005								4
450	.005								5
475	.005								6
500	.005								7
525	.005								8
550	.005								9
575	.005								10
600	.005								11
625	.045								12
650	.005								13
675	.005								14
700	.005								15
725	.005								16
750	.005								17
775	.005								18
800	.005								19
825	.005								20
850	.005								21
875	.005								22
900	.005								23
925	.005								24
950	.005								25
975	.005								26
1000	.005								27
1025	.005								28
1050	.005								29
1075	.005								30
1100	.005								31
1125	.005								32
5.5E + 1150 N	.005								33
									34
5.5E + 350 N	.005								35
									36
5.5E + 850 S	.005								37
875	.005								38
900	.005								39
5.5E + 925 S	.005								40

All reports are the confidential property of clients
All results are in PPM.

DIGESTION:.....

DETERMINATION:.....

DATE SAMPLES RECEIVED Aug. 25, 1981

DATE REPORTS MAILED Sept 19, 1981

ASSAYER Dean Toye

DEAN TOYE, B.Sc.
CHIEF CHEMIST
CERTIFIED B.C. ASSAYER



To: J.G. Ager Consultants

ACME ANALYTICAL LABORATORIES LTD.

Assaying & Trace Analysis

852 E. Hastings St., Vancouver, B.C. V6A 1R6

phone:253 - 3158

File No. 81-1181 B

Type of Samples Soils

GEOCHEMICAL ASSAY CERTIFICATE

Disposition _____

2

SAMPLE No.	Au	
5.5E + 950 S	.005	1
975	.005	2
1000	.005	3
1025	.005	4
1050	.005	5
1075	.025	6
1100	.005	7
1125	.005	8
1150	.005	9
1175	.005	10
1200	.005	11
1225	.005	12
1250	.005	13
1275	.005	14
1300	N.S.	15
1325	.005	16
5.5E + 1350 S	.005	17
6.5E + 75 S	.010	18
100	.015	19
125	.005	20
150	.005	21
175	.005	22
200	.005	23
225	.005	24
250	.005	25
275	.005	26
300	.005	27
325	.005	28
350	.005	29
375	.005	30
400	.005	31
425	.005	32
450	.005	33
475	.005	34
500	.005	35
525	.005	36
6.5E + 550 S	.005	37
		38
		39
		40

All reports are the confidential property of clients
All results are in PPM.

DIGESTION:.....

DETERMINATION:.....

DATE SAMPLES RECEIVED Aug. 25, 1981

DATE REPORTS MAILED Sept. 19, 1981

ASSAYER

DEAN TOYE, B.Sc.
CHIEF CHEMIST
CERTIFIED B.C. ASSAYER



To: J.G. Ager Consultant

ACME ANALYTICAL LABORATORIES LTD.

Assaying & Trace Analysis

852 E. Hastings St., Vancouver, B.C. V6A 1R6

phone:253 - 3158

File No. 81-1181 B

Type of Samples Soils

Disposition _____

GEOCHEMICAL ASSAY CERTIFICATE

3

SAMPLE No.	Au								
6.5E + 575 S	.005								1
600	.005								2
625	N.S.								3
650	.005								4
675	.005								5
700	.005								6
725	.005								7
750	.005								8
775	.010								9
800	.005								10
825	.005								11
850	.005								12
875	.005								13
900	.005								14
925	.035								15
950	.005								16
975	.005								17
1000	.005								18
1025	.005								19
1050	.020								20
1075	.005								21
1100	.005								22
1125	.005								23
1150	.005								24
1175	.005								25
1200	.005								26
1225	.005								27
1250	.005								28
1275	.005								29
1300	.005								30
1325	.005								31
6.5E + 1350 S	.005								32
									33
6.5E + 375 N	.005								34
875	.005								35
900	.300								36
925	.005								37
6.5E + 950 N	.005								38
									39
									40

All reports are the confidential property of clients
All results are in PPM.

DIGESTION:.....

DETERMINATION:.....

DATE SAMPLES RECEIVED Aug. 25, 1981

DATE REPORTS MAILED Sept. 19, 1981

ASSAYER

DEAN TOYE, B.Sc.
CHIEF CHEMIST
CERTIFIED B.C. ASSAYER



To: J.G. Ager Consultant

ACME ANALYTICAL LABORATORIES LTD.

Assaying & Trace Analysis

852 E. Hastings St., Vancouver, B. C. V6A 1R6

phone:253 - 3158

File No. 81-1181 B

Type of Samples Soils

GEOCHEMICAL ASSAY CERTIFICATE

Disposition _____

4

SAMPLE No.	Au									
6.5E 975 N	.005									1
1000	.005									2
1025	.005									3
1050	.005									4
1075	.005									5
1100	.005									6
1125	.005									7
6.5E 1150 N	.005									8
										9
7.5E 25 N	.005									10
50	.005									11
75	.005									12
100	.005									13
125	.005									14
150	.005									15
175	.005									16
200	.005									17
225	.005									18
250	.005									19
275	.005									20
300	.005									21
325	.005									22
350	.005									23
375	.005									24
400	.005									25
425	.005									26
450	.005									27
475	.005									28
500	.030									29
525	.005									30
550	.005									31
575	.005									32
600	.005									33
625	.005									34
650	.005									35
675	.005									36
700	.005									37
725	.005									38
7.5E 750 N	.005									39
										40

All reports are the confidential property of clients
All results are in PPM.

DIGESTION:.....

DETERMINATION:.....

DATE SAMPLES RECEIVED Aug. 25, 1981

DATE REPORTS MAILED Sept. 19, 1981

ASSAYER

D. Toye

DEAN TOYE, B.Sc.
CHIEF CHEMIST
CERTIFIED B.C. ASSAYER



To: J.G. Ager Consultant

ACME ANALYTICAL LABORATORIES LTD.

Assaying & Trace Analysis

852 E. Hastings St., Vancouver, B.C. V6A 1R6

phone:253 - 3158

File No. 81-1181 B

Type of Samples Soils

Disposition

GEOCHEMICAL ASSAY CERTIFICATE

SAMPLE No.	Au								
5									
7.5E + 775 N	.005								1
800	.005								2
7.5E + 825 N	.005								3
									4
7.5E + 25 S	.005								5
50	.005								6
75	.005								7
100	.005								8
125	.005								9
150	.005								10
175	.005								11
200	.005								12
225	.005								13
250	.005								14
275	.005								15
300	.005								16
325	.005								17
350	.005								18
375	.005								19
400	.005								20
425	.005								21
450	.005								22
475	.005								23
500	.005								24
525	.005								25
550	.005								26
575	P .005								27
600	.005								28
625	.005								29
650	.005								30
675	.005								31
700	.005								32
725	.005								33
750	.005								34
775	.005								35
800	.005								36
825	.005								37
7.5E 850 S	.005								38
									39
									40

All reports are the confidential property of clients
All results are in PPM.

DIGESTION:.....

DETERMINATION:.....

* P = pulverized.

DATE SAMPLES RECEIVED Aug. 25, 1981

DATE REPORTS MAILED Sept. 19, 1981

ASSAYER *D. Toye*

DEAN TOYE, B.Sc.
CHIEF CHEMIST
CERTIFIED B.C. ASSAYER



To: J.G. Ager Consultant

File No. 81-1181 B

Type of Samples Soils

GEOCHEMICAL ASSAY CERTIFICATE

Disposition

SAMPLE No.	Au								
8.5E 1150 S	.005								1
1175	.005								2
1200	.005								3
1225	.005								4
1250	.005								5
1275	.005								6
1300	.005								7
1325	.005								8
8.5E 1350 S	.005								9
									10
									11
									12
9.5E 25 S	.005								13
50	.005								14
75	.010								15
100	.005								16
125	.005								17
150	.005								18
175	.005								19
200	.005								20
225	.005								21
250	.005								22
275	.005								23
300	.005								24
325	.005								25
350	.005								26
375	.005								27
400	.005								28
425	.005								29
450	.005								30
475	.005								31
500	.005								32
525	.005								33
550	.005								34
575	.005								35
600	.480								36
625	.005								37
650	.005								38
675	.005								39
9.5E 700 S	.005								40

All reports are the confidential property of clients
All results are in PPM.

DIGESTION:.....

DETERMINATION:.....

DATE SAMPLES RECEIVED Aug. 25, 1981

DATE REPORTS MAILED Sept. 19, 1981

ASSAYER

Dean Toye

DEAN TOYE, B.Sc.
CHIEF CHEMIST
CERTIFIED B.C. ASSAYER



To: J.G. Ager Consultant

ACME ANALYTICAL LABORATORIES LTD.

Assaying & Trace Analysis

852 E. Hastings St., Vancouver, B. C. V6A 1R6

phone:253 - 3158

File No. 81-1181 B

Type of Samples Soils

GEOCHEMICAL ASSAY CERTIFICATE

Disposition _____

12

SAMPLE No.	Au								
11E 350 N	.005								1
400	.005								2
450	.005								3
500	.005								4
550	.005								5
600	.005								6
650	.005								7
700	.005								8
750	.225								9
800	.005								10
850	.005								11
900	.005								12
950	.025								13
1000	.005								14
1050	.005								15
1100	.005								16
11E 1150 N	.005								17
									18
									19
11E 25 S	.005								20
50	.005								21
75	.005								22
100	.005								23
125	.005								24
150	.005								25
175	.005								26
200	.005								27
225	.005								28
250	.005								29
275	.005								30
300	.005								31
325	.005								32
350	.005								33
375	.005								34
400	.005								35
425	.005								36
450	.005								37
475	.005								38
11E 500 S	.005								39
									40

All reports are the confidential property of clients
All results are in PPM.

DIGESTION:.....

DETERMINATION:.....

DATE SAMPLES RECEIVED Aug. 25, 1981

DATE REPORTS MAILED Sept. 19, 1981

ASSAYER

D. Toye

DEAN TOYE, B.Sc.
CHIEF CHEMIST
CERTIFIED B.C. ASSAYER



To: J.G. Ager Consultant

ACME ANALYTICAL LABORATORIES LTD.

Assaying & Trace Analysis

852 E. Hastings St., Vancouver, B. C. V6A 1R6

phone:253 - 3158

File No. 81-1181 B

Type of Samples Soils

Disposition _____

GEOCHEMICAL ASSAY CERTIFICATE

13

SAMPLE No.	Au									
11E 525 S	.005									1
550	.005									2
575	.005									3
600	.005									4
625	.005									5
650	.005									6
675	.005									7
700	.005									8
725	.005									9
750	.005									10
800	.005									11
850	.005									12
900	.005									13
900	.040								Dup.	14
950	.005									15
1000	.005									16
1050	.005									17
1100	.005									18
1150	.005									19
1200	.005									20
1250	.005									21
1300	.005									22
11E 1350 S	.005									23
										24
128E 900 S	.005									25
950	.005									26
1000	.005									27
1050	.005									28
1100	.010									29
1150	.005									30
1200	.005									31
1250	.005									32
1300	.005									33
128E 1350 S	.075									34
										35
13E 50 N	.015									36
100	.005									37
13E 150 N	.005									38
										39
										40

All reports are the confidential property of clients
All results are in PPM.

DIGESTION:.....

DETERMINATION:.....

DATE SAMPLES RECEIVED Aug. 25, 1981

DATE REPORTS MAILED Sept. 19, 1981

ASSAYER

DEAN TOYE, B.Sc.
CHIEF CHEMIST
CERTIFIED B.C. ASSAYER



To: J.G. Ager Consultant

ACME ANALYTICAL LABORATORIES LTD.

Assaying & Trace Analysis

852 E. Hastings St., Vancouver, B. C. V6A 1R6

phone: 253 - 3158

File No. 81-1181 B

Type of Samples _____

Disposition _____

GEOCHEMICAL ASSAY CERTIFICATE

14

SAMPLE No.	Au								
13E 200 N	.005								1
250	.105								2
300	.005								3
350	.005								4
400	.005								5
450	.005								6
500	.005								7
550	.005								8
600	.005								9
650	.005								10
700	.010								11
750	.005								12
800	.005								13
850	.005								14
900	.005								15
950	.005								16
1000	.005								17
1050	.005								18
1100	.005								19
13E 1150 N	.005								20
									21
									22
13E 50 S	.005								23
100	.005								24
150	.005								25
200	.005								26
250	.005								27
300	.005								28
350	.260								29
400	.005								30
450	.005								31
500	.005								32
550	.005								33
600	.005								34
650	.005								35
700	.005								36
750	.005								37
800	.005								38
13E 850 S	.005								39
									40

All reports are the confidential property of clients
All results are in PPM.

DIGESTION:.....

DETERMINATION:.....

DATE SAMPLES RECEIVED Aug. 25, 1981

DATE REPORTS MAILED Sept. 19, 1981

ASSAYER

DEAN TOYE, B.Sc.
CHIEF CHEMIST
CERTIFIED B.C. ASSAYER



To: J.G. Ager Consultant

ACME ANALYTICAL LABORATORIES LTD.

Assaying & Trace Analysis

852 E. Hastings St., Vancouver, B. C. V6A 1R6

phone:253 - 3158

File No. 81-1181 B

Type of Samples Soils

GEOCHEMICAL ASSAY CERTIFICATE

Disposition _____

15

SAMPLE No.	Au								
13E 900 S	.005								1
950	.105								2
1000	.005								3
13E 1200 S	.005								4
									5
									6
15E 50 N	.005								7
100	.005								8
150	.005								9
200	.005								10
250	.005								11
300	.005								12
350	.005								13
400	.005								14
450	.005								15
500	.005								16
550	.040								17
600	.005								18
650	.005								19
700	.005								20
750	.490								21
800	.005								22
850	.085								23
900	.005								24
950	N.S.								25
1000	.005								26
1050	.005								27
1100	.005								28
15E 1150 N	.005								29
									30
15E 150 S	.005								31
200	.005								32
250	.005								33
300	.005								34
350	.005								35
400	.005								36
450	.005								37
500	.005								38
550	.025								39
15E 600 S	.005								40

All reports are the confidential property of clients
All results are in PPM.

DIGESTION:.....

DETERMINATION:.....

DATE SAMPLES RECEIVED Aug. 25, 1981

DATE REPORTS MAILED Sept. 19, 1981

ASSAYER

DEAN TOYE, B.Sc.
CHIEF CHEMIST
CERTIFIED B.C. ASSAYER



To: J.G. Ager Consultants

ACME ANALYTICAL LABORATORIES LTD.

Assaying & Trace Analysis

852 E. Hastings St., Vancouver, B. C. V6A 1R6

phone: 253 - 3158

File No. 81-1181 A

Type of Sample Soils

Disposition

GEOCHEMICAL ASSAY CERTIFICATE

SAMPLE No.	Au								
OE 675 S	.005								1
700	.005								2
725	.005								3
750	.005								4
775	.005	P							5
800	.005								6
825	.005								7
850	.005								8
875	.005								9
900	.005								10
925	.005								11
950	.005								12
975	.005								13
1000	.005								14
1025	.005								15
1050	.005								16
1075	.005								17
1100	.005								18
1125	.005								19
1150	.005								20
1175	.005								21
1200	.005								22
1225	.005								23
1250	.005								24
1275	.005								25
1300	.005								26
1325	.005								27
1350 S	.005								28
1E 25 S	N.S.								29
50	.005								30
75	.005								31
100	.005								32
125	.005								33
150	.005								34
175	.005								35
200	.005								36
225 S	.005								37
									38
									39
									40

All reports are the confidential property of clients
All results are in PPM.

DIGESTION:

DETERMINATION:

* P = -20 mesh and pulverized.

DATE SAMPLES RECEIVED Aug 25, 1981
DATE REPORTS MAILED Sept. 14, 1981

ASSAYER

DEAN TOYNE, B.Sc.
CHIEF CHEMIST
CERTIFIED B.C. ASSAYER



To: J.G. Ager Consultant

ACME ANALYTICAL LABORATORIES LTD.

Assaying & Trace Analysis

852 E. Hastings St., Vancouver, B.C. V6A 1R6

phone:253 - 3158

File No. 81-1181 B

Type of Samples _____

Disposition _____

GEOCHEMICAL ASSAY CERTIFICATE

16

SAMPLE No.	Au								
15E 650 S	.005								1
700	.005								2
750	.005								3
800	.005								4
850	.005								5
900	.010								6
950	.005								7
1000	.005								8
1050	.205								9
1100	.005								10
1150	.005								11
1200	N.S.								12
1250	.045								13
1300	.005								14
15E 1350 S	.005								15
									16
									17
17E 50 N	.005								18
100	.005								19
150	.005								20
200	.005								21
250	.005								22
300	.005								23
350	.005								24
400	.005								25
450	.005								26
500	.005								27
550	.005								28
600	.005								29
650	.005								30
700	.025								31
750	.005								32
800	.065								33
850	N.S.								34
900	.005								35
950	.005								36
1000	.005								37
1050	.005								38
1100	.005								39
17E 1150 N	.025								40

All reports are the confidential property of clients
All results are in PPM.

DIGESTION:.....

DETERMINATION:.....

DATE SAMPLES RECEIVED Aug. 25, 1981

DATE REPORTS MAILED Sept 19, 1981

ASSAYER

D. Toye
DEAN TOYE, B.Sc.
CHIEF CHEMIST
CERTIFIED B.C. ASSAYER



To: J.G. Ager Consultant

ACME ANALYTICAL LABORATORIES LTD.

Assaying & Trace Analysis

852 E. Hastings St., Vancouver, B. C. V6A 1R6

phone:253 - 3158

File No. 81-1181 B

Type of Samples Soils

Disposition

GEOCHEMICAL ASSAY CERTIFICATE

17

SAMPLE No.	Au	
17E 50 S	.005	1
100	.005	2
150	.005	3
200	.025	4
250	.005	5
300	.005	6
350	.005	7
400	.005	8
450	.005	9
500	.005	10
550	N.S.	11
600	N.S.	12
650	N.S.	13
700	.005	14
750	.005	15
800	.005	16
850	.005	17
900	.005	18
950	.005	19
1000	.005	20
1050	.005	21
1100	.005	22
1150	.005	23
1200	.005	24
17E 1250 S	.005	25
		26
		27
BL 1125 E	.005	28
1150	.005	29
1175	.005	30
1200	.005	31
1225	.005	32
1250	.005	33
1275	.005	34
1300	.060	35
1325	.005	36
1350	.105	37
1375	.005	38
BL 1400 E	.005	39
		40

All reports are the confidential property of clients
All results are in PPM.

DIGESTION:.....

DETERMINATION:.....

DATE SAMPLES RECEIVED Aug. 25, 1981

DATE REPORTS MAILED Sept. 19, 1981

ASSAYER

Dean Toye

DEAN TOYE, B.Sc.
CHIEF CHEMIST
CERTIFIED B.C. ASSAYER



To: J.G. Ager Consultant

81-1181 B

File No. _____

Type of Samples Soils

Disposition _____

GEOCHEMICAL ASSAY CERTIFICATE

19	SAMPLE No.	Au							
	NCL 400 E	.005							1
	425	.005							2
	450	.005							3
	475	.005							4
	500	.005							5
	525	.005							6
	550	.005							7
	575	.005							8
	600	.005							9
	625	.005							10
	650	.005							11
	675	.005							12
	700	.005							13
	725	.005							14
									15
	850	.005							16
	875	.005							17
	900	.005							18
	925	.005							19
	950	.005							20
	975	.005							21
	1000	.005							22
	1025	.020							23
	1050	N.S.							24
	1075	.005							25
	1075	.005						Dup.	26
	1100	.005							27
	1125	.005							28
	1150	.005							29
	1175	.005							30
	1200	.005							31
	1225	.005							32
	1250	.005							33
	1275	.005							34
	1300	.065							35
	1325	.005							36
	1350	.005							37
	1375	.005							38
	NCL 1400 E	N.S.							39
									40

All reports are the confidential property of clients
All results are in PPM.

DIGESTION:.....

DETERMINATION:.....

DATE SAMPLES RECEIVED Aug. 25, 1981

DATE REPORTS MAILED Sept. 19, 1981

ASSAYER *D. Toye*

DEAN TOYE, B.Sc.
CHIEF CHEMIST
CERTIFIED B.C. ASSAYER



To: J.G. Ager Consultant

File No. 81-1181 B

Type of Samples Soils

Disposition _____

GEOCHEMICAL ASSAY CERTIFICATE

20

SAMPLE No.	Au								
NCL 1425 E	.005								1
1450	.005								2
1475	.005								3
1500	.005								4
1525	N.S.								5
1550	N.S.								6
1575	.005								7
1600	.005								8
1625	.005								9
1650	.005								10
1675	.005								11
1700	N.S.								12
1725	.005								13
1750	.010								14
1775	.005								15
1800	.005								16
1825	.005								17
1850	.005								18
1875	.005								19
NCL 1900 E	.005								20
									21
									22
NCL 50 N	.005								23
100	.005								24
150	.005								25
200	.005								26
250	.005								27
300	.005								28
350	.005								29
400	.005								30
450	.005								31
500	.005								32
550	.005								33
600	.005								34
650	.005								35
700	.005								36
750	.005								37
800	.005								38
NCL 850 N	.005								39
									40

All reports are the confidential property of clients
All results are in PPM.

DIGESTION:.....

DETERMINATION:.....

DATE SAMPLES RECEIVED Aug. 25, 1981

DATE REPORTS MAILED Sept. 19, 1981

ASSAYER

DEAN TOYE, B.Sc.
CHIEF CHEMIST
CERTIFIED B.C. ASSAYER

STATEMENT OF QUALIFICATIONS

I, James G. Ager, B.Sc., of Vancouver, British Columbia, do hereby state that:

1. I am a Consulting Geologist. I graduated from the University of British Columbia, Canada in 1972.
2. I have worked in the exploration field as follows:
 - Jayco Syndicate; summer season, 1967.
 - Magnetron Mining Ltd.; May, 1968 - September, 1970.
 - Magnetron Mining Ltd.; summer season, 1971.
 - Sibola Mines Ltd.; May, 1972 - October, 1974.
 - Self-employed Consulting Geologist; October, 1974 to present, as Geologist and Project Supervisor for various Mining Companies throughout British Columbia and the Yukon including Pryme Energy Resources Ltd., Azora Minerals Inc., Petersfield Oil & Minerals, and Lansdowne Oil & Minerals Ltd.
3. I have no direct or indirect interest in any manner in either the property or securities of MacMillan Energy Corp., nor do I anticipate to receive any such interest.

DATED AT VANCOUVER, B.C., this 15th day of October, 1981.

JAMES G. AGER, B.Sc.
Consulting Geologist

GEOCHEMICAL ASSAYS - GOLD



To: J.G. Ager Consultant,
1318 - 510 W. Hastings St.,
Vancouver, B.C.

Re: MacMillan Energy Ltd.,

File No. 81-0922

Type of Samples Soils

Disposition _____

GEOCHEMICAL ASSAY CERTIFICATE

SAMPLE No.	Au								
BL + 0 E	.005								1
25	.005								2
50	.025								3
75	.005								4
100	.005								5
125	.005								6
150	.120								7
175	.005								8
200	.005								9
225	.005								10
250	.005								11
275	.005								12
300	.005								13
325	.005								14
350	.005								15
375	.005								16
400	.005								17
425	.005								18
450	.005								19
475	.005								20
500	.005								21
525	.005								22
550	.005								23
575	.005								24
600	.005								25
625	.005								26
650	.005								27
675	.005								28
700	.005								29
725	.005								30
750	.005								31
775	.005								32
BL + 800 E	.005								33
									34
BL + 825 E	.005								35
850	.005								36
875	.005								37
BL + 900 E	.005								38
									39
									40

All reports are the confidential property of clients
All results are in PPM.

DIGESTION:.....

DETERMINATION:.....

DATE SAMPLES RECEIVED Aug. 1, 1981

DATE REPORTS MAILED Aug. 8, 1981

ASSAYER SKC

DEAN TOYE, B.Sc.
CHIEF CHEMIST
CERTIFIED B.C. ASSAYER



To: J.G. Ager Consultant
1318 - 510 W. Hastings St.;
Vancouver, B.C.

Assaying & Trace Analysis

852 E. Hastings St., Vancouver, B.C. V6A 1R6

phone:253 - 3158

File No. 81-1181 A
Soils

Type of Samples _____

Disposition _____

GEOCHEMICAL ASSAY CERTIFICATE

SAMPLE No.	Au									
1 OE 25 N	.015									1
50	.010									2
75	.005									3
100	.005									4
125	.135									5
150	.010									6
175	.040									7
200	.015									8
225	.005									9
250	.005									10
275	.005									11
300	.005									12
325	.005									13
350	.005									14
375	.005									15
400	.005									16
425	.005									17
450	.005									18
475	.005									19
500	.005									20
525	.060									21
550	.005									22
575	.005									23
600	.005									24
625	.005									25
650	.005									26
675	.005									27
700	.005									28
725	.005									29
750	.005									30
775	.005									31
800	.005									32
825	.005									33
850	.005									34
875	.005									35
900	.005									36
OE 925 N	.005									37
										38
										39
										40

All reports are the confidential property of clients
All results are in PPM.

DIGESTION:.....

DETERMINATION:.....

DATE SAMPLES RECEIVED Aug. 25, 1981

DATE REPORTS MAILED Sept. 14, 1981

ASSAYER Dean Toye

DEAN TOYE, B.Sc.
CHIEF CHEMIST
CERTIFIED B.C. ASSAYER



To: J.G. Ager Consultant

ACME ANALYTICAL LABORATORIES LTD.

Assaying & Trace Analysis

852 E. Hastings St., Vancouver, B.C. V6A 1R6

phone:253 - 3158

File No. 81-1181 A

Type of Samples Soils

GEOCHEMICAL ASSAY CERTIFICATE

Disposition

2

SAMPLE No.	Au									
OE 950 N	.005									1
975	.005									2
1000	.005									3
1025	.005									4
1050	.005									5
1075	.005									6
1100	.005									7
1125	.005									8
1150	.005									9
1175	.005									10
OE 1200 N	.005									11
										12
OE 25 S	.030									13
50	.005									14
75	.005									15
100	.005									16
125	.005									17
150	.005									18
175	.005									19
200	.005									20
225	.005									21
250	.005									22
275	.225									23
300	.005									24
325	.005									25
350	.005									26
375	.005									27
400	.005									28
425	.005									29
450	.005									30
475	.015									31
500	.005									32
525	.005									33
550	.005									34
575	.005									35
600	.005									36
625	.005									37
OE 650	.520									38
										39
										40

All reports are the confidential property of clients
All results are in PPM.

DIGESTION:.....

DETERMINATION:.....

DATE SAMPLES RECEIVED Aug. 25, 1981

DATE REPORTS MAILED Sept. 14, 1981

ASSAYER *D. Toye*

DEAN TOYE, B.Sc.
CHIEF CHEMIST
CERTIFIED B.C. ASSAYER



To: J.G. Ager Consultants

ACME ANALYTICAL LABORATORIES LTD.

Assaying & Trace Analysis

852 E. Hastings St., Vancouver, B. C. V6A 1R6

phone:253 - 3158

File No. 81-1181 A

Type of Samples Soils

Disposition _____

GEOCHEMICAL ASSAY CERTIFICATE

3

SAMPLE No.	Au										
OE 675 S	.005										1
700	.005										2
725	.005										3
750	.005										4
775	P .005										5
800	.005										6
825	.005										7
850	.005										8
875	.005										9
900	.005										10
925	.005										11
950	.005										12
975	.005										13
1000	.005										14
1025	.005										15
1050	.005										16
1075	.005										17
1100	.005										18
1125	.005										19
1150	.005										20
1175	.005										21
1200	.005										22
1225	.005										23
1250	.005										24
1275	.005										25
1300	.005										26
1325	.005										27
1350 S	.005										28
1E 25 S	N.S.										29
50	.005										30
75	.005										31
100	.005										32
125	.005										33
150	.005										34
175	.005										35
200	.005										36
1E 225 S	.005										37
											38
											39
											40

All reports are the confidential property of clients
All results are in PPM.

DIGESTION:.....

DETERMINATION:.....

* P = -20 mesh and pulverized.

DATE SAMPLES RECEIVED Aug. 25, 1981

DATE REPORTS MAILED Sept. 14, 1981

ASSAYER *D. Toye*

DEAN TOYE, B.Sc.
CHIEF CHEMIST
CERTIFIED B.C. ASSAYER



To: J.G. Ager Consultants

ACME ANALYTICAL LABORATORIES LTD.

Assaying & Trace Analysis

852 E. Hastings St., Vancouver, B.C. V6A 1R6

phone:253 - 3158

File No. 81-1181 A

Type of Samples Soils

Disposition _____

GEOCHEMICAL ASSAY CERTIFICATE

5

SAMPLE No.	Au									
1E 1200 S	.005									1
1225	.005									2
1250	.005									3
1275	.005									4
1300	.005									5
1325	.005									6
1E 1350 S	.005									7
										8
1E 25 N	.025									9
50	.005									10
75	.005									11
100	.005									12
125	.005									13
150	.005									14
175	.005									15
200	.005									16
225	.005									17
250	.005									18
275	.005									19
300	.005									20
325	.005									21
350	.005									22
375	.005									23
400	.005									24
425	.005									25
450	.005									26
475	.005									27
500	.005									28
525	.005									29
550	.005									30
575	.005									31
600	.005									32
625	.005									33
650	.005									34
675	.005									35
700	.005									36
725	.010									37
1E 750 N	.005									38
										39
										40

All reports are the confidential property of clients
All results are in PPM.

DIGESTION:.....

DETERMINATION:.....

DATE SAMPLES RECEIVED Aug. 25, 1981

DATE REPORTS MAILED Sept. 14, 1981

ASSAYER Dean Toye

DEAN TOYE, B.Sc.
CHIEF CHEMIST
CERTIFIED B.C. ASSAYER



To: J.G. Ager Consultants

File No. 81-1181 A

Type of Samples _____

Disposition _____

GEOCHEMICAL ASSAY CERTIFICATE

SAMPLE No.	Au								
1E 775 N	.015								1
800	.005								2
825	.005								3
850	N.S.								4
875	.005								5
900	.010								6
925	.005								7
950	.005								8
975	.005								9
1000	.005								10
1025	.005								11
1050	.010								12
1075	.005								13
1100	.005								14
1125	.010								15
1150	.015								16
1175	.010								17
1E 1200 N	.015								18
									19
2E 25 S	.010								20
50	.020								21
75	.005								22
100	.005								23
125	.005								24
150	.005								25
175	.005								26
200	.360								27
225	.005								28
250	.005								29
275	.005								30
300	.005								31
325	.005								32
350	.005								33
375	.005								34
400	P .005								35
425	P .005								36
450	.005								37
2E 475 S	P .005								38
									39
									40

All reports are the confidential property of clients
All results are in PPM.

DIGESTION:.....

DETERMINATION:.....

DATE SAMPLES RECEIVED Aug. 25, 1981

DATE REPORTS MAILED Sept. 14, 1981

ASSAYER Dean Toye

DEAN TOYE, B.Sc.
CHIEF CHEMIST
CERTIFIED B.C. ASSAYER



To: J.G. Ager Consultants

ACME ANALYTICAL LABORATORIES LTD.

Assaying & Trace Analysis

852 E. Hastings St., Vancouver, B. C. V6A 1R6

phone:253 - 3158

81-1181 A

File No. _____

Type of Samples _____

Disposition _____

GEOCHEMICAL ASSAY CERTIFICATE

SAMPLE No.	Au																				
2E 75 N	.005																				1
100	.005																				2
125	.005																				3
150	.005																				4
175	.005																				5
200	.005																				6
225	.005																				7
250	.005																				8
275	.005																				9
300	.005																				10
325	.005																				11
350	.005																				12
375	.005																				13
400	.005																				14
425	.005																				15
450	.010																				16
475	.045																				17
500	.005																				18
525	.005																				19
550	.040																				20
575	.005																				21
600	.005																				22
625	.005																				23
650	.005																				24
675	.005																				25
700	.005																				26
725	.005																				27
750	.005																				28
775	.005																				29
800	.005																				30
825	.005																				31
850	.005																				32
875	.005																				33
900	.005																				34
925	.005																				35
950	.005																				36
2E-975 N	.005																				37
																					38
																					39
																					40

All reports are the confidential property of clients
All results are in PPM.

DIGESTION:.....

DETERMINATION:.....

DATE SAMPLES RECEIVED Aug. 25, 1981

DATE REPORTS MAILED Sept. 14, 1981

ASSAYER Dean Toye

DEAN TOYE, B.Sc.
CHIEF CHEMIST
CERTIFIED B.C. ASSAYER



To: J.G. Ager Consultant

File No. 81-1181 A

Type of Samples Soils

Disposition

GEOCHEMICAL ASSAY CERTIFICATE

SAMPLE No.	Au									
2E + 1000 N	P .005									1
1025	.005									2
1050	.005									3
1075	.005									4
1100	.005									5
1125	.005									6
2E 1150 N	.005									7
										8
3E 25 S	.005									9
50	.005									10
75	.005									11
100	.005									12
125	.005									13
150	.005									14
175	.010									15
200	.045									16
225	.005									17
250	.005									18
275	.005									19
300	.005									20
325	.005									21
350	.005									22
315	.005									23
400	.005									24
425	.005									25
450	.005									26
475	.005									27
500	.115									28
525	.005									29
550	.005									30
575	.005									31
600	.005									32
625	.015									33
650	.005									34
675	.005									35
700	.005									36
725	.005									37
3E 750 S	.005									38
										39
										40

All reports are the confidential property of clients
All results are in PPM.

DIGESTION:.....

DETERMINATION:.....

DATE SAMPLES RECEIVED Aug. 25, 1981

DATE REPORTS MAILED Sept. 14, 1981

ASSAYER Dean Toye

DEAN TOYE, B.Sc.
CHIEF CHEMIST
CERTIFIED B.C. ASSAYER



To: J.G. Ager Consultants

ACME ANALYTICAL LABORATORIES LTD.

Assaying & Trace Analysis

852 E. Hastings St., Vancouver, B.C. V6A 1R6

phone:253 - 3158

File No. 81-1181 A

Type of Samples Soils

GEOCHEMICAL ASSAY CERTIFICATE

Disposition

10

SAMPLE No.	Au									
3E 775 S	.060									1
800	.020									2
825	.005									3
850	.135									4
875	.010									5
900	.010									6
925	.005									7
950	.005									8
975	.015									9
1000	.110									10
1025	.015									11
1050	.020									12
1075	.010									13
1100	.005									14
1125	.010									15
1150	.015									16
1175	.010									17
1200	.015									18
1225	.010									19
1250	.005									20
1275	.035									21
1300	.015									22
3E 1325 S	.005									23
										24
3E 25 N	.015									25
50	.010									26
75	.005									27
100	.005									28
125	.005									29
150	.010									30
175	.165									31
200	.005									32
225	.005									33
250	.010									34
275	.005									35
300	.005									36
325	.100									37
3E 350 N	.005									38
										39
										40

All reports are the confidential property of clients
All results are in PPM.

DIGESTION:.....

DETERMINATION:.....

DATE SAMPLES RECEIVED Aug. 25, 1981

DATE REPORTS MAILED Sept. 14, 1981

ASSAYER

Dean Toye

DEAN TOYE, B.Sc.
CHIEF CHEMIST
CERTIFIED B.C. ASSAYER



To: J.G. Ager Consultant

ACME ANALYTICAL LABORATORIES LTD.

Assaying & Trace Analysis

852 E. Hastings St., Vancouver, B. C. V6A 1R6

phone:253 - 3158

File No. 81-1181 A

Type of Samples Soils

Disposition

GEOCHEMICAL ASSAY CERTIFICATE

12

SAMPLE No.	Au									
3.5E 150 N	.005									1
175	.005									2
200	.010									3
225	.005									4
250	.005									5
275	.005									6
300	.005									7
325	.005									8
350	.150									9
375	.005									10
400	.010									11
425	.010									12
450	.005									13
475	.010									14
500	.005									15
525	.005									16
550	.005									17
575	.005									18
600	.005									19
625	.005									20
650	.005									21
675	.005									22
700	.045									23
725	.005									24
750	.005									25
775	.700									26
800	.005									27
825	.010									28
850	N.S.									29
875	.005									30
900	.070									31
925	.005									32
950	.005									33
975	.010									34
1000	.005									35
1025	.005									36
3.5E 1050 N	.005									37
										38
										39
										40

All reports are the confidential property of clients
All results are in PPM.

DIGESTION:.....

DETERMINATION:.....

DATE SAMPLES RECEIVED Aug. 25, 1981

DATE REPORTS MAILED Sept. 14, 1981

ASSAYER *D. Toye*

DEAN TOYE, B.Sc.
CHIEF CHEMIST
CERTIFIED B.C. ASSAYER



To: J.G. Ager Consultants

ACME ANALYTICAL LABORATORIES LTD.

Assaying & Trace Analysis

852 E. Hastings St., Vancouver, B. C. V6A 1R6

phone:253 - 3158

File No. 81-1181 A

Type of Samples soils

Disposition _____

GEOCHEMICAL ASSAY CERTIFICATE

15

SAMPLE No.	Au								
4.5E 950 N	.005								1
975	.005								2
1000	.055								3
1025	.005								4
1050	.010								5
1075	.005								6
1100	.005								7
1125	.005								8
4.5E 1150 N	.005								9
									10
4.5E 850 S	.005								11
875	.005								12
900	.005								13
925	.005								14
950	.005								15
975	.005								16
1000	.005								17
1025	.005								18
1050	.005								19
1075	.005								20
1100	.005								21
1125	.010								22
1150	.005								23
1175	.005								24
1200	.005								25
1225	.005								26
1250	.005								27
1275	.005								28
4.5E 1300 S	.005								29
									30
5 E 25 S	.005								31
50	.005								32
75	.005								33
100	.005								34
125	.005								35
150	.005								36
175	.005								37
5 E 200 S	.005								38
									39
									40

All reports are the confidential property of clients
All results are in PPM.

DIGESTION:.....

DETERMINATION:.....

DATE SAMPLES RECEIVED Aug. 25, 1981

DATE REPORTS MAILED Sept. 14, 1981

ASSAYER Dean Toye

DEAN TOYE, B.Sc.
CHIEF CHEMIST
CERTIFIED B.C. ASSAYER



To: J.G. Ager Consultant
1318 - 510 W. Hastings St.,
Vancouver, B.C.

File No. 81-1181 B

Type of Samples Soils

Disposition _____

GEOCHEMICAL ASSAY CERTIFICATE

1

SAMPLE No.	Au	
5.5E + 300 N	.005	1
325	.005	2
400	.005	3
425	.005	4
450	.005	5
475	.005	6
500	.005	7
525	.005	8
550	.005	9
575	.005	10
600	.005	11
625	.045	12
650	.005	13
675	.005	14
700	.005	15
725	.005	16
750	.005	17
775	.005	18
800	.005	19
825	.005	20
850	.005	21
875	.005	22
900	.005	23
925	.005	24
950	.005	25
975	.005	26
1000	.005	27
1025	.005	28
1050	.005	29
1075	.005	30
1100	.005	31
1125	.005	32
5.5E + 1150 N	.005	33
		34
5.5E + 350 N	.005	35
		36
5.5E + 850 S	.005	37
875	.005	38
900	.005	39
5.5E + 925 S	.005	40

All reports are the confidential property of clients
All results are in PPM.

DIGESTION:.....

DETERMINATION:.....

DATE SAMPLES RECEIVED Aug. 25, 1981

DATE REPORTS MAILED Sept. 19, 1981

ASSAYER

DEAN TOYE, B.Sc.
CHIEF CHEMIST
CERTIFIED B.C. ASSAYER



To: J.G. Ager Consultant

ACME ANALYTICAL LABORATORIES LTD.

Assaying & Trace Analysis

852 E. Hastings St., Vancouver, B. C. V6A 1R6

phone:253 - 3158

File No. 81-1181 B

Type of Samples Soils

GEOCHEMICAL ASSAY CERTIFICATE

Disposition

3

SAMPLE No.	Au								
6.5E + 575 S	.005								1
600	.005								2
625	N.S.								3
650	.005								4
675	.005								5
700	.005								6
725	.005								7
750	.005								8
775	.010								9
800	.005								10
825	.005								11
850	.005								12
875	.005								13
900	.005								14
925	.035								15
950	.005								16
975	.005								17
1000	.005								18
1025	.005								19
1050	.020								20
1075	.005								21
1100	.005								22
1125	.005								23
1150	.005								24
1175	.005								25
1200	.005								26
1225	.005								27
1250	.005								28
1275	.005								29
1300	.005								30
1325	.005								31
6.5E + 1350 S	.005								32
									33
6.5E + 375 N	.005								34
875	.005								35
900	.300								36
925	.005								37
6.5E + 950 N	.005								38
									39
									40

All reports are the confidential property of clients
All results are in PPM.

DIGESTION:.....

DETERMINATION:.....

DATE SAMPLES RECEIVED Aug. 25, 1981

DATE REPORTS MAILED Sept. 19, 1981

ASSAYER

D. Toye

DEAN TOYE, B.Sc.
CHIEF CHEMIST
CERTIFIED B.C. ASSAYER



To: J.G. Ager Consultant

File No. 81-1181 B

Type of Samples Soils

Disposition _____

GEOCHEMICAL ASSAY CERTIFICATE

SAMPLE No.	Au								
5 7.5E + 775 N	.005								1
800	.005								2
7.5E + 825 N	.005								3
									4
7.5E + 25 S	.005								5
50	.005								6
75	.005								7
100	.005								8
125	.005								9
150	.005								10
175	.005								11
200	.005								12
225	.005								13
250	.005								14
275	.005								15
300	.005								16
325	.005								17
350	.005								18
375	.005								19
400	.005								20
425	.005								21
450	.005								22
475	.005								23
500	.005								24
525	.005								25
550	.005								26
575 P	.005								27
600	.005								28
625	.005								29
650	.005								30
675	.005								31
700	.005								32
725	.005								33
750	.005								34
775	.005								35
800	.005								36
825	.005								37
7.5E 850 S	.005								38
									39
									40

All reports are the confidential property of clients
All results are in PPM.

DIGESTION:.....

DETERMINATION:.....

* P = pulverized.

DATE SAMPLES RECEIVED Aug. 25, 1981

DATE REPORTS MAILED Sept. 19, 1981

ASSAYER *D. Toye*

DEAN TOYE, B.Sc.
CHIEF CHEMIST
CERTIFIED B.C. ASSAYER



To: J.G. Ager Consultant

ACME ANALYTICAL LABORATORIES LTD.

Assaying & Trace Analysis

852 E. Hastings St., Vancouver, B. C. V6A 1R6

phone:253 - 3158

File No. 81-1181 B

Type of Samples Soils

Disposition

GEOCHEMICAL ASSAY CERTIFICATE

6

SAMPLE No.	Au								
7.5E 875 S	.005								1
900	.005								2
925	.005								3
950	.005								4
975	.005								5
1000	.005								6
1025	.005								7
1050	.005								8
1075	.005								9
1100	.005								10
1125	.005								11
1150	.005								12
1175	.005								13
1200	.005								14
1225	.005								15
1250	.005								16
1275	.005								17
1300	.005								18
1325	.005								19
7.5E 1350 S	.005								20
									21
									22
									23
8.5E 25 N	.005								24
50	.005								25
75	.005								26
100	.005								27
125	.005								28
150	.005								29
175	.005								30
200	.005								31
225	.005								32
250	.005								33
275	1.100								34
300	.005								35
325	.005								36
350	.005								37
375	.005								38
400	.005								39
8.5E 425 N	.005								40

All reports are the confidential property of clients
All results are in PPM.

DIGESTION:.....

DETERMINATION:.....

DATE SAMPLES RECEIVED Aug. 25, 1981

DATE REPORTS MAILED Sept. 19, 1981

ASSAYER

DEAN TOYE, B.Sc.
CHIEF CHEMIST
CERTIFIED B.C. ASSAYER



To: J.G. Ager Consultant

ACME ANALYTICAL LABORATORIES LTD.

Assaying & Trace Analysis

852 E. Hastings St., Vancouver, B. C. V6A 1R6

phone:253 - 3158

81-1181 B

File No. _____

Type of Samples Soils

Disposition _____

GEOCHEMICAL ASSAY CERTIFICATE

7

SAMPLE No.	Au									
8.5E + 450 N	.005									1
475	.005									2
500	.075									3
525	.005									4
550	.005									5
575	.005									6
600	.005									7
625	.005									8
650	.005									9
675	.005									10
700	.005									11
725	.005									12
750	.005									13
775	.005									14
800	.005									15
825	.005									16
850	.005									17
875	.005									18
900	.050									19
925	.005									20
950	.005									21
975	.025									22
1000	.005									23
1025	.005									24
1050	.005									25
1075	.050									26
1100	.005									27
1125	.005									28
8.5E + 1150 N	.065									29
										30
8.5E + 25 S	.005									31
50	.005									32
75	.005									33
100	.005									34
125	.005									35
150	.005									36
175	.005									37
8.5E + 200 S	.005									38
										39
										40

All reports are the confidential property of clients
All results are in PPM.

DIGESTION:.....

DETERMINATION:.....

DATE SAMPLES RECEIVED Aug. 25, 1981

DATE REPORTS MAILED Sept. 19, 1981

ASSAYER

DEAN TOYE, B.Sc.
CHIEF CHEMIST
CERTIFIED B.C. ASSAYER



To: J.G. Ager Consultant

File No. 81-1181 B

Type of Samples Soils

GEOCHEMICAL ASSAY CERTIFICATE

Disposition

SAMPLE No.	Au									
9										
8.5E	1150 S	.005								1
	1175	.005								2
	1200	.005								3
	1225	.005								4
	1250	.005								5
	1275	.005								6
	1300	.005								7
	1325	.005								8
8.5E	1350 S	.005								9
										10
										11
										12
9.5E	25 S	.005								13
	50	.005								14
	75	.010								15
	100	.005								16
	125	.005								17
	150	.005								18
	175	.005								19
	200	.005								20
	225	.005								21
	250	.005								22
	275	.005								23
	300	.005								24
	325	.005								25
	350	.005								26
	375	.005								27
	400	.005								28
	425	.005								29
	450	.005								30
	475	.005								31
	500	.005								32
	525	.005								33
	550	.005								34
	575	.005								35
	600	.480								36
	625	.005								37
	650	.005								38
	675	.005								39
9.5E	700 S	.005								40

All reports are the confidential property of clients
All results are in PPM.

DIGESTION:.....

DETERMINATION:.....

DATE SAMPLES RECEIVED Aug. 25, 1981

DATE REPORTS MAILED Sept. 19, 1981

ASSAYER *Dean Toy*

DEAN TOYE, B.Sc.
CHIEF CHEMIST
CERTIFIED B.C. ASSAYER



To: J.G. Ager Consultant

ACME ANALYTICAL LABORATORIES LTD.

Assaying & Trace Analysis

852 E. Hastings St., Vancouver, B. C. V6A 1R6

phone:253 - 3158

File No. 81-1181 B

Type of Samples Soils

GEOCHEMICAL ASSAY CERTIFICATE

Disposition

SAMPLE No.	Au									
9.5E 725 N	.005									1
750	.005									2
775	.005									3
800	.005									4
825	.005									5
850	.005									6
875	.005									7
900	N.S.									8
925	.005									9
950	.005									10
975	.005									11
1000	.005									12
1025	.005									13
1050	.005									14
1075	.005									15
9.5E 1100 N	.005									16
										17
										18
										19
9.5E 75 S	.005									20
100	.005									21
125	.005									22
150	.005									23
175	.005									24
200	.005									25
225	.005									26
250	.005									27
275	.005									28
300	.005									29
325	.005									30
350	.005									31
375	.005									32
400	.005									33
425	.005									34
450	.005									35
475	.005									36
500	.005									37
525	N.S.									38
550	.005									39
9.5E 575 S	.005									40

All reports are the confidential property of clients
All results are in PPM.

DIGESTION:.....

DETERMINATION:.....

DATE SAMPLES RECEIVED Aug. 25, 1981

DATE REPORTS MAILED Sept. 19, 1981

ASSAYER

DEAN TOYE, B.Sc.
CHIEF CHEMIST
CERTIFIED B.C. ASSAYER



To: J.G. Ager Consultant

ACME ANALYTICAL LABORATORIES LTD.

Assaying & Trace Analysis

852 E. Hastings St., Vancouver, B. C. V6A 1R6

phone:253 - 3158

File No. 81-1181 B

Type of Samples Soils

GEOCHEMICAL ASSAY CERTIFICATE

Disposition _____

12

SAMPLE No.	Au																				
11E 350 N	.005																				1
400	.005																				2
450	.005																				3
500	.005																				4
550	.005																				5
600	.005																				6
650	.005																				7
700	.005																				8
750	.225																				9
800	.005																				10
850	.005																				11
900	.005																				12
950	.025																				13
1000	.005																				14
1050	.005																				15
1100	.005																				16
11E 1150 N	.005																				17
																					18
																					19
11E 25 S	.005																				20
50	.005																				21
75	.005																				22
100	.005																				23
125	.005																				24
150	.005																				25
175	.005																				26
200	.005																				27
225	.005																				28
250	.005																				29
275	.005																				30
300	.005																				31
325	.005																				32
350	.005																				33
375	.005																				34
400	.005																				35
425	.005																				36
450	.005																				37
475	.005																				38
11E 500 S	.005																				39
																					40

All reports are the confidential property of clients
All results are in PPM.

DIGESTION:.....

DETERMINATION:.....

DATE SAMPLES RECEIVED Aug. 25, 1981

DATE REPORTS MAILED Sept. 19, 1981

ASSAYER Dean Toye

DEAN TOYE, B.Sc.
CHIEF CHEMIST
CERTIFIED B.C. ASSAYER



To: J.G. Ager Consultant

ACME ANALYTICAL LABORATORIES LTD.

Assaying & Trace Analysis

852 E. Hastings St., Vancouver, B. C. V6A 1R6

phone:253 - 3158

File No. 81-1181 B

Type of Samples

Disposition

GEOCHEMICAL ASSAY CERTIFICATE

14

SAMPLE No.	Au									
13E 200 N	.005									1
250	.105									2
300	.005									3
350	.005									4
400	.005									5
450	.005									6
500	.005									7
550	.005									8
600	.005									9
650	.005									10
700	.010									11
750	.005									12
800	.005									13
850	.005									14
900	.005									15
950	.005									16
1000	.005									17
1050	.005									18
1100	.005									19
13E 1150 N	.005									20
										21
										22
13E 50 S	.005									23
100	.005									24
150	.005									25
200	.005									26
250	.005									27
300	.005									28
350	.260									29
400	.005									30
450	.005									31
500	.005									32
550	.005									33
600	.005									34
650	.005									35
700	.005									36
750	.005									37
800	.005									38
13E 850 S	.005									39
										40

All reports are the confidential property of clients
All results are in PPM.

DIGESTION:.....

DETERMINATION:.....

DATE SAMPLES RECEIVED Aug. 25, 1981

DATE REPORTS MAILED Sept. 19, 1981

ASSAYER

Dean Toye

DEAN TOYE, B.Sc.
CHIEF CHEMIST
CERTIFIED B.C. ASSAYER



To: J.G. Ager Consultant

ACME ANALYTICAL LABORATORIES LTD.

Assaying & Trace Analysis

852 E. Hastings St., Vancouver, B. C. V6A 1R6

phone:253 - 3158

File No. 81-1181 B

Type of Samples Soils

Disposition _____

GEOCHEMICAL ASSAY CERTIFICATE

SAMPLE No.	Au								
13E 900 S	.005								1
950	.105								2
1000	.005								3
13E 1200 S	.005								4
									5
									6
15E 50 N	.005								7
100	.005								8
150	.005								9
200	.005								10
250	.005								11
300	.005								12
350	.005								13
400	.005								14
450	.005								15
500	.005								16
550	.040								17
600	.005								18
650	.005								19
700	.005								20
750	.490								21
800	.005								22
850	.085								23
900	.005								24
950	N.S.								25
1000	.005								26
1050	.005								27
1100	.005								28
15E 1150 N	.005								29
									30
15E 150 S	.005								31
200	.005								32
250	.005								33
300	.005								34
350	.005								35
400	.005								36
450	.005								37
500	.005								38
550	.025								39
15E 600 S	.005								40

All reports are the confidential property of clients
All results are in PPM.

DIGESTION:.....

DETERMINATION:.....

DATE SAMPLES RECEIVED Aug. 25, 1981

DATE REPORTS MAILED Sept. 19, 1981

ASSAYER

DEAN TOYE, B.Sc.
CHIEF CHEMIST
CERTIFIED B.C. ASSAYER



To: J.G. Ager Consultant

ACME ANALYTICAL LABORATORIES LTD.

Assaying & Trace Analysis

852 E. Hastings St., Vancouver, B. C. V6A 1R6

phone: 253 - 3158

File No. 81-1181 B

Type of Samples Soils

Disposition

GEOCHEMICAL ASSAY CERTIFICATE

20

SAMPLE No.	Au									
NCL 1425 F	.005									1
1450	.005									2
1475	.005									3
1500	.005									4
1525	N.S.									5
1550	N.S.									6
1575	.005									7
1600	.005									8
1625	.005									9
1650	.005									10
1675	.005									11
1700	N.S.									12
1725	.005									13
1750	.010									14
1775	.005									15
1800	.005									16
1825	.005									17
1850	.005									18
1875	.005									19
NCL 1900 F	.005									20
										21
										22
NCL 50 N	.005									23
100	.005									24
150	.005									25
200	.005									26
250	.005									27
300	.005									28
350	.005									29
400	.005									30
450	.005									31
500	.005									32
550	.005									33
600	.005									34
650	.005									35
700	.005									36
750	.005									37
800	.005									38
NCL 850 N	.005									39
										40

All reports are the confidential property of clients
All results are in PPM.

DIGESTION:.....

DETERMINATION:.....

DATE SAMPLES RECEIVED Aug. 25, 1981

DATE REPORTS MAILED Sept. 19, 1981

ASSAYER Dean Toye

DEAN TOYE, B.Sc.
CHIEF CHEMIST
CERTIFIED B.C. ASSAYER



To: J.G. Ager Consultant

File No. 81-1181 B

Type of Samples _____

Disposition _____

GEOCHEMICAL ASSAY CERTIFICATE

SAMPLE No.	Au									
ECL 900 N	.005									1
										2
										3
ECL 50 S	.005									4
100	.005									5
150	.005									6
200	.005									7
250	.005									8
300	.005									9
350	.005									10
400	.005									11
450	.005									12
500	.005									13
550	.005									14
600	.005									15
650	.005									16
700	.005									17
750	.005									18
800	.005									19
850	.005									20
900	.005									21
950	.005									22
1000	.005									23
1050	.005									24
1100	.005									25
1150	.005									26
1200	.005									27
1250	.005									28
1300	.005									29
ECL 1350 S	.005									30
										31
2.7S 25 S	.035									32
50	.005									33
75	.005									34
100	.005									35
125	.040									36
150	.005									37
2.7S 175 S	.005									38
										39
										40

All reports are the confidential property of clients
All results are in PPM.

DIGESTION:.....

DETERMINATION:.....

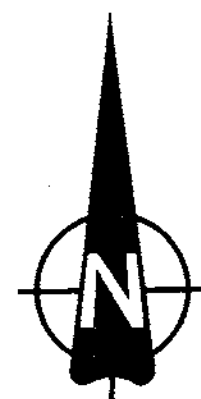
DATE SAMPLES RECEIVED Aug. 25, 1981

DATE REPORTS MAILED Sept. 19, 1981

ASSAYER

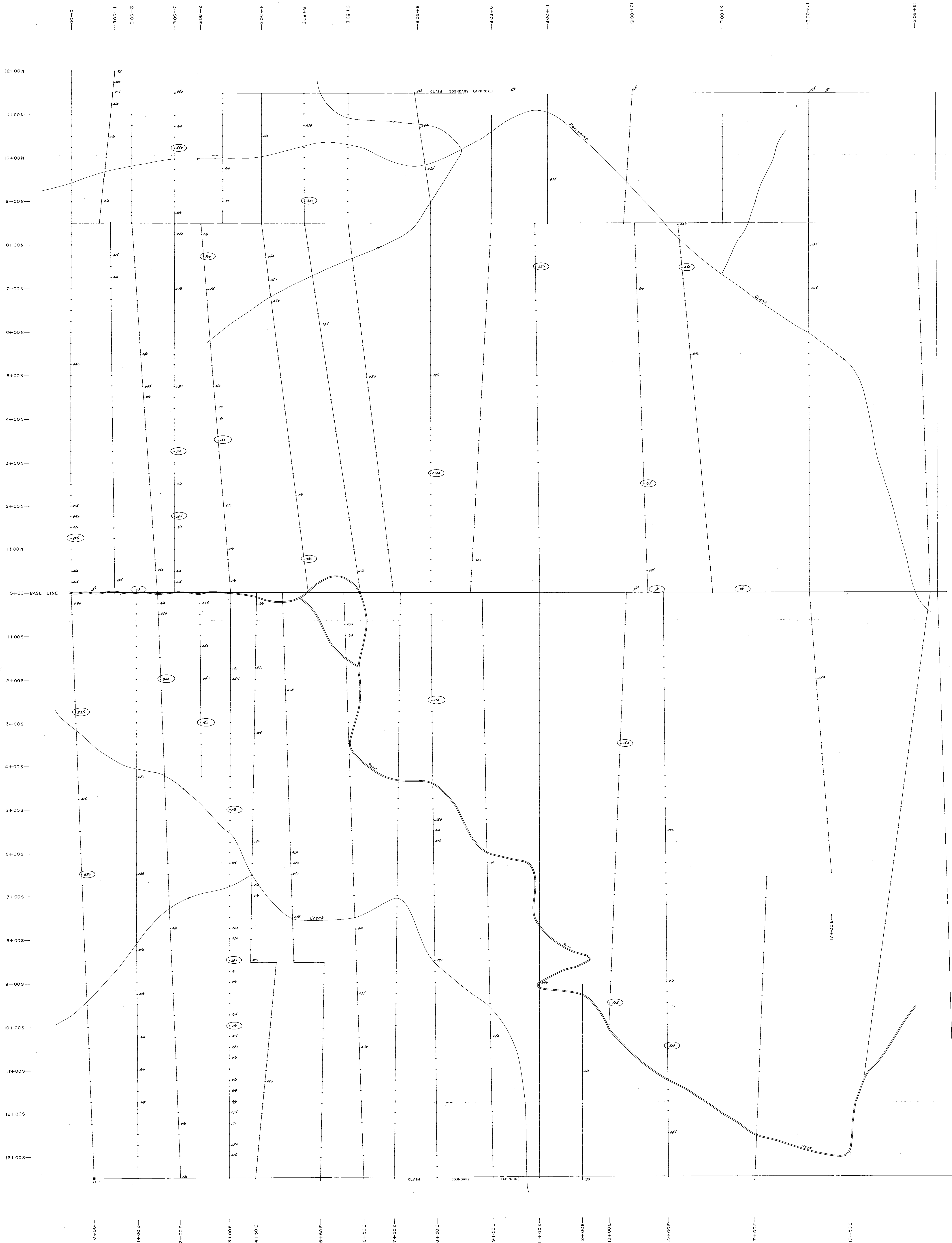
DEAN TOYE, B.Sc.
CHIEF CHEMIST
CERTIFIED B.C. ASSAYER

122°27'

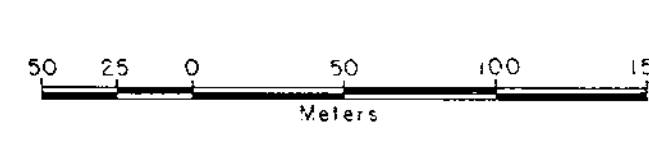


LEGEND

Values $\times 1$ PPB
NOTE: Values $\leq .005$ or Less Not Plotted.



MINERAL PROSPECTS LTD. 10486



MACMILLAN ENERGY CORP.
- BUBBLE CLAIM -
CLINTON MINING DIVISION - BRITISH COLUMBIA

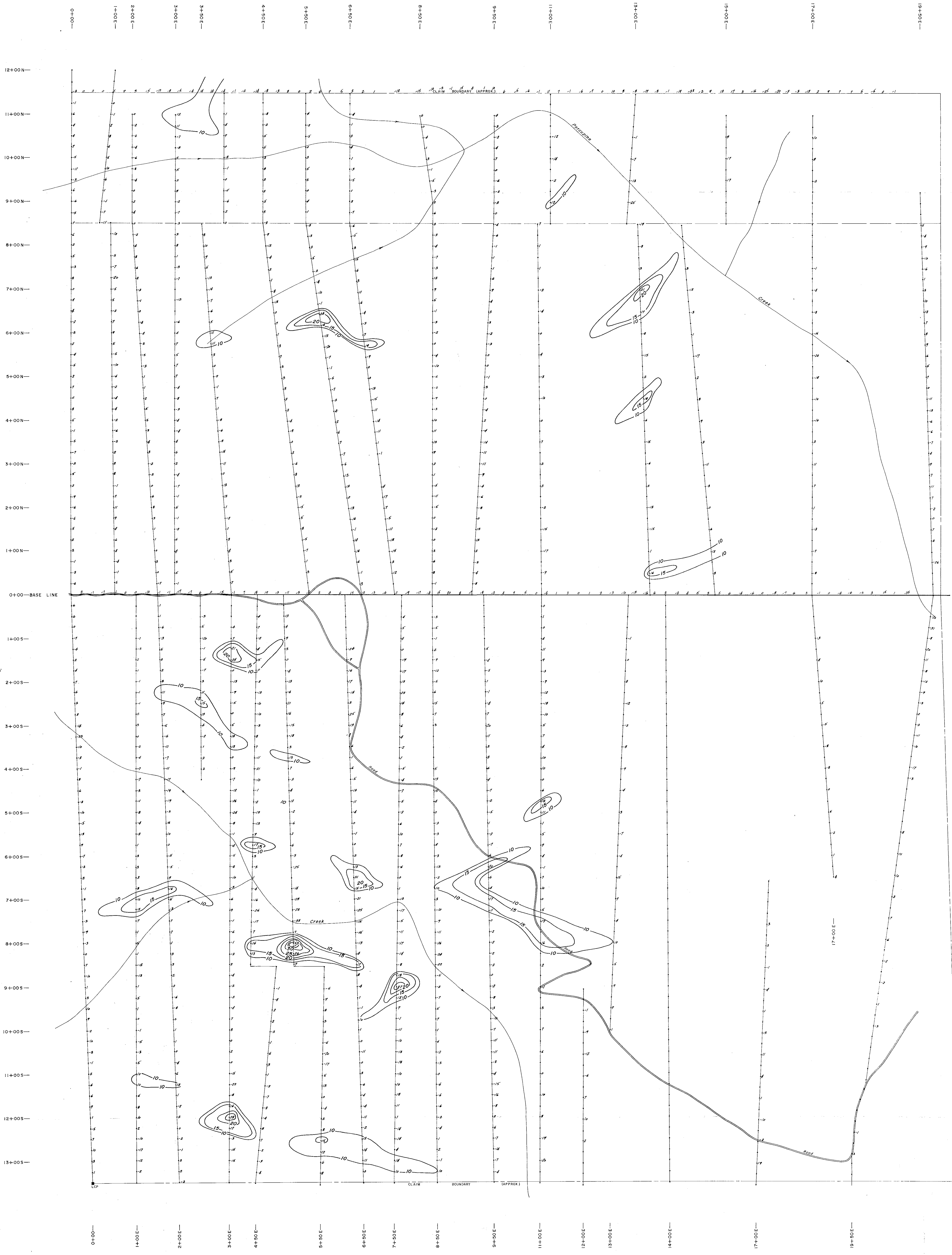
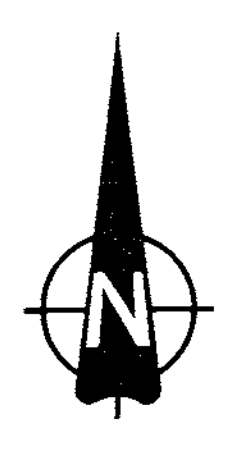
- GOLD PPB -

Samuel Neger

U.S. ASER CONSULTANTS LTD. VANCOUVER, B.C. PREPARED BY: U.S. ASER CONSULTANTS LTD. VANCOUVER, B.C. DATE: OCT 1988

FIG. NO. 2

To Accompany GEOPHYSICAL-GEOCHEMICAL Report BY U.S. ASER B.C.



INSTRUMENT - SABRE MODEL 27
TRANSMITTER - SEATTLE WASH.

MINERAL RIGHTS
10486
50 00 0 50 100 150
Meters

MACMILLAN ENERGY CORP.
- BUBBLE CLAIM -
CLINSON-MINING DIVISION - BRITISH COLUMBIA
C. Ann. Nease
ELECTROMAGNETOMETER
FILTERED DIP ANGLE
CONTOUR INTERVAL : 5 Degrees

To accompany GEOPHYSICAL-GEOCHEMICAL Report
BY J.C. ADER 836

J.C. ADER
CONSULTANTS LTD.
VANCOUVER, B.C.

DATE BY: T.M.
DATE BY: C.K. BY:
DATE: OCT 1981

FIG. NO.
3