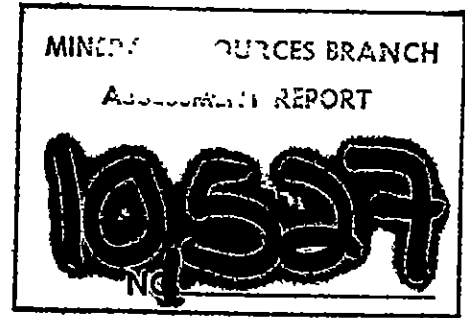


part 1
Pg 2



DIAMOND DRILL PROGRAM ON THE
MAUD 1-7 MINERAL CLAIMS, QUESNEL RIVER AREA
BRITISH COLUMBIA

CARIBOO M.D.

82 - 538 - 10527

NTS 93A12

52°44'N, 121°55'W

by

P.E. Fox Ph.D., P.Eng.
FOX GEOLOGICAL CONSULTANTS LTD.
410-675 W Hastings Street
Vancouver, B.C.

for

Dome Exploration (Canada) Limited
(Owner and Operator)

CLAIMS

Maud 1-7

June 30, 1982.

TABLE OF CONTENTS

	<u>Page No.</u>
INTRODUCTION -----	1
LOCATION AND ACCESS -----	1
CLAIMS -----	1
WORK PROGRAM -----	4
GEOLOGY -----	4-5
DRILL SUMMARIES -----	6-8
DISBURSEMENTS -----	9
<u>APPENDIX</u> - DRILL RECORDS - 180M1-4 -----	10

ILLUSTRATIONS

FIGURE 1 - Location Map -----	2
FIGURE 2 - Claim Map -----	3
FIGURE 3 - Drill Plan -----	In pocket

INTRODUCTION

The purpose of this report is to present results of diamond drilling work done on the Maud claims between October 22 and November 5, 1981. The program was designed to evaluate a gold prospect originally staked in 1975. A total of four diamond drill holes comprising 1,415 metres has been drilled to date.

LOCATION AND ACCESS

The property is located on the west side of Maud Lake 40 kilometres southeast of Quesnel, B.C. (Figures 1 & 2). Access is by a 25-kilometre forestry road from Sardine Flats to the southwest corner of Maud #3. A rough, four-wheel-drive access trail joins the logging road and the camp area at Maud Lake. The Maud claims have an elevation of 1200 metres above sea level. Slopes are gentle and generally covered by a thin layer of glacial till. Vegetation consists of thin stands of mixed poplar, fir and jackpine.

Old clearings on the property include an abandoned two-acre farmsite, old placer ditches, and several old roads (Swift River trail) to the east and north.

CLAIMS

There are seven claims within the group. Expiry dates noted below assume that the work described herein is accepted for assessment purposes.

Maud 1	16 units	Rec. No. 1785	Aug. 1, 1993
Maud 2	20 "	" " 1786	Aug. 1, 1993
Maud 3	20 "	" " 1787	Aug. 1, 1993
Maud 4	16 "	" " 1788	Aug. 1, 1993

Maud 5	16 units	Rec. No. 4073	Oct. 20, 1993
Maud 6	20 "	" " 4074	Oct. 20, 1993
Maud 7	20 "	" " 4075	Oct. 20, 1993

WORK PROGRAM

The 1981 drill program consisted of 1,415 metres of diamond drilling between October 22 and December 5, 1981. Drilling work was contracted to J.T. Thomas Drilling Limited, Smithers, B.C. The program was follow-up exploration of surface work done early in 1981.

The current program comprised four holes. Collar locations are given in Figure 3. BQWL core was recovered, logged, split and sampled in 1.5-metre lengths. All holes were drilled east at -45° . Core samples were assayed by Acme Analytical Laboratories, 852 East Hastings Street, Vancouver. Core is stored in bays #2 and #3, 1252 Jade Road, Quesnel. Drill logs are appended. Access roads, camp area and drill sites were prepared by a rental bulldozer (D8H) from Quesnel Redi Mix. Approximately 10 kilometres of road were developed.

GEOLOGY

The Maud property covers a diorite stock and enclosing pyritic volcanic rocks exposed on low ridges near the west side of the Maud Lake. The property is situated 10 kilometres north of the Quesnel River gold prospect currently being explored by Dome Mines Limited. The Maud prospect is associated with a small alkalic intrusion of diorite, monzodiorite and monzonite that intrudes a thick succession of augite basalt, trachybasalt, felsic breccia, and volcanic wackes and sediments.

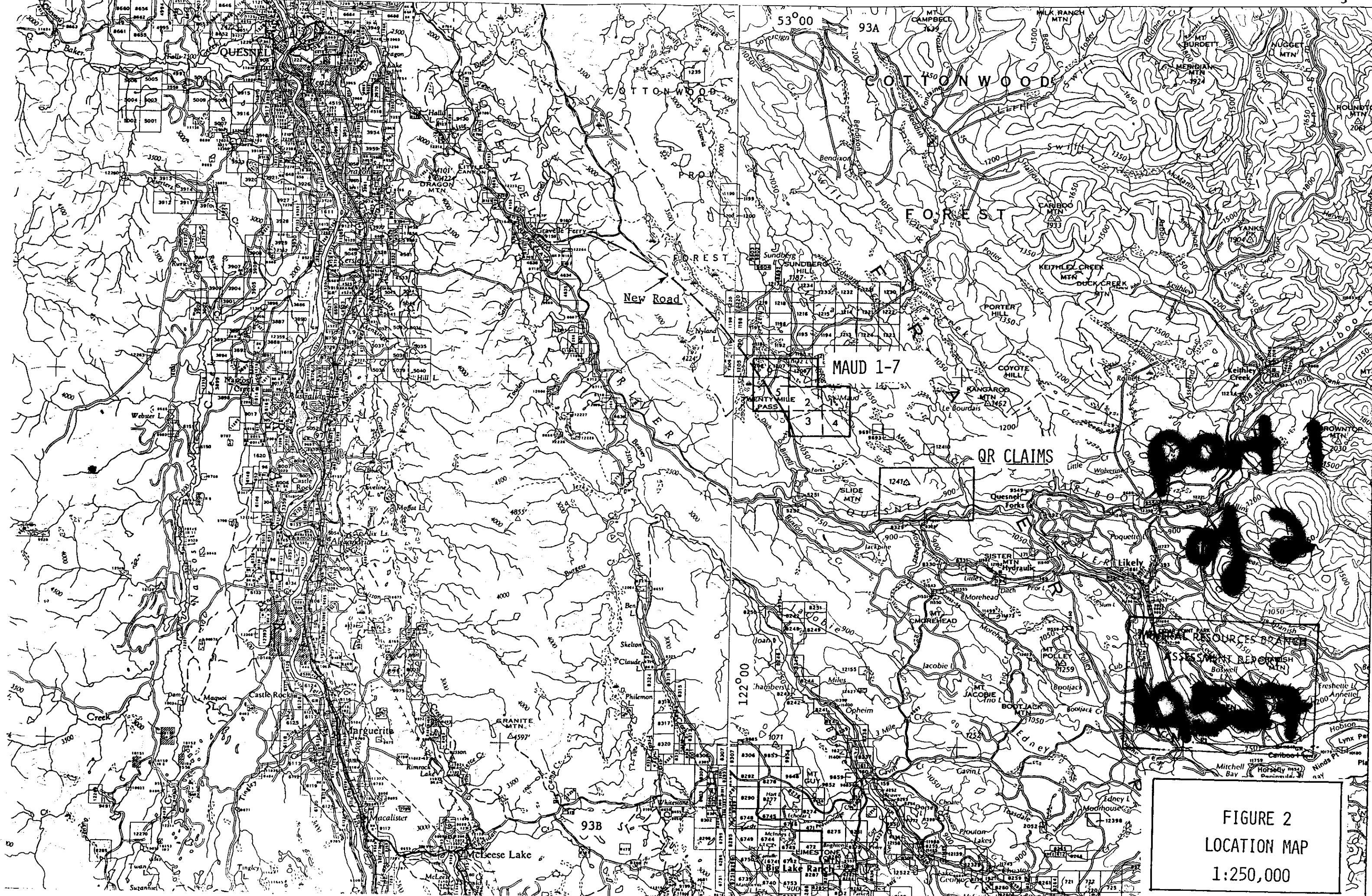


FIGURE 2
 LOCATION MAP
 1:250,000

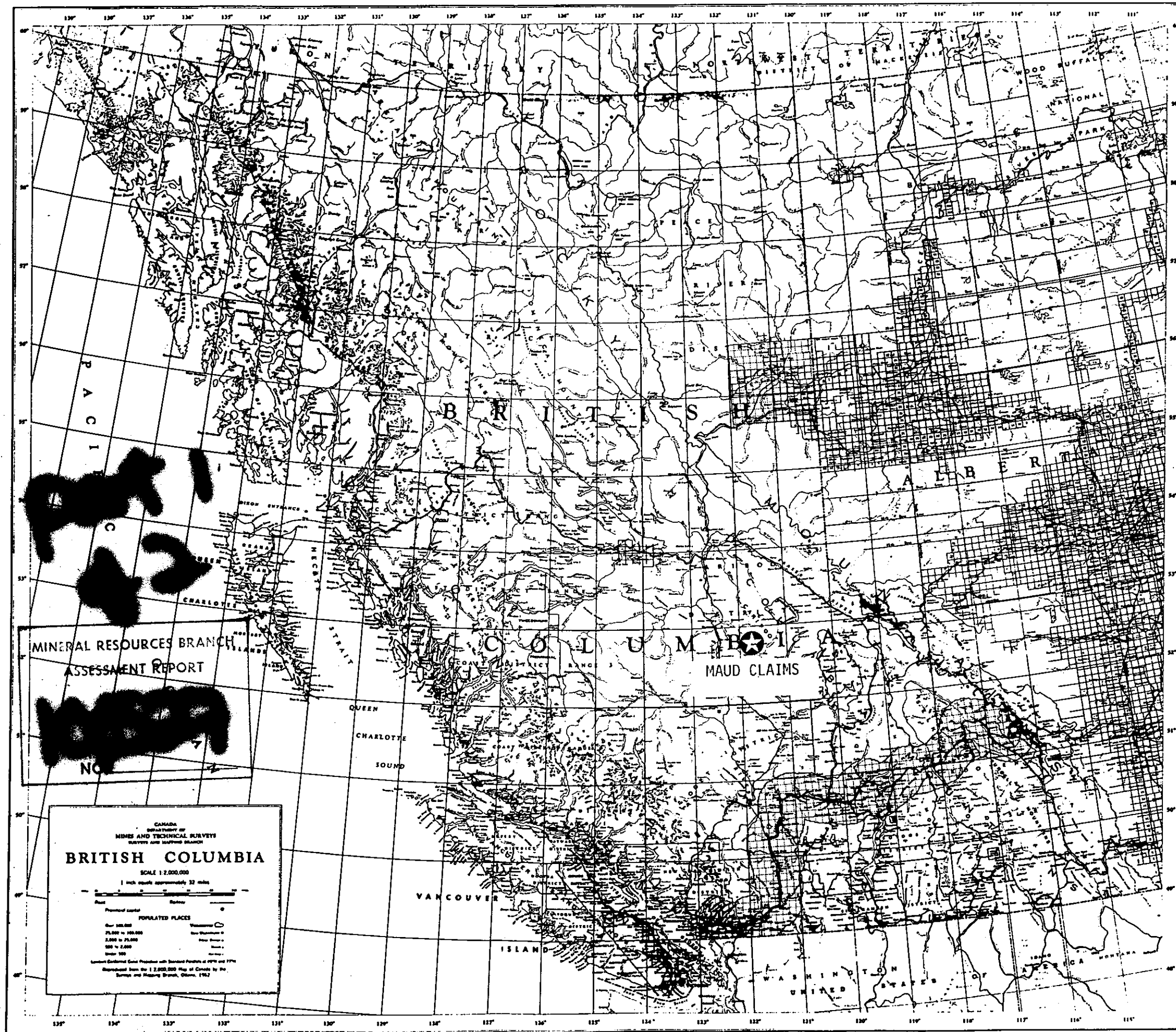


FIGURE 1

Dark grey massive basaltic flows, thick layers of unstratified autobreccia and widespread accumulations of pyritic felsic breccia form rocky summits and ridges in the central part of the property. Poorly bedded volcanic wackes and sedimentary grits outcrop at lower elevations to the west. The sediments strike north-westerly, dip steeply west, and overlie the volcanic strata to the east. Small amounts of gold and copper have been detected in pyritic volcanic rocks near the east boundary of Maud 2.

DRILL SUMMARIES

180M-1

Hole 180M-1 (400.2m) was collared near the south end of the Maud property to test a zone of high chargeability and low resistivity associated with altered volcanics and sediments.

0.0 - 52.0	<u>Basalt</u> , 2% finely disseminated pyrite, trace carbonate.
52.0 - 67.7	<u>Siltstone</u> , bedding 75° (to core axis), pyritic.
67.7 - 156.0	<u>Tuff breccia</u> , mottled grey, mainly latite clasts to 6cm, rounded, limestone clasts 95-100m. Weak carbonate, trace pyrite.
156.0 - 178.0	<u>Tuff and felsic lapillistone</u> . Bedding in tuff 45°. interlayered with coarse lapillistone and breccia. Finely disseminated pyrite. Weak carbonate.
178.0 - 180.0	<u>Wacke</u> , massive, trace pyrite.
180.0 - 188.3	<u>Tuff breccia</u> , massive, felsic fragments, trace pyrite.
188.3 - 320.5	<u>Volcanic wacke</u> and interlayered felsic breccia and lapillistone, unaltered, trace pyrite.
320.5 - 321.5	<u>Felsic porphyry</u>
321.5 - 333.0	<u>Altered wacke</u> and siltstone, pink garnets common in local calc-silicate rock, trace pyrite.
333.0 - 361.0	<u>Altered basalt</u> , plagioclase-rich basalt, variably altered to pink and green calc-silicates.
361.0 - 400.2	<u>Volcanic wacke</u> , well bedded to massive, trace pyrite, locally altered to calc-silicate rock. End of hole.

180M-2

- 0.0 - 149.0 Basalt and monolithologic breccia, trace pyrite and weak carbonate, 40% plagioclase and augite phenocrysts in fine grained matrix. Numerous calcite veinlets. Minor hornblende phenocrysts.
- 149.0 - 164.3 Basaltic wacke and basalt, mottled grey/green, interflow sediments, contacts 20°, 1% pyrite.
- 164.3 - 198.0 Calcareous basalt and breccia, rich in calcite.
- 198.0 - 205.5 Pyritic augillite and tuff, dark grey to black, bedding 45°, 1% to 5% pyrite, interlayered with coarse tuff.
- 205.5 - 310.5 Felsic breccia, lapillistone and latite porphyry. Numerous felsic fragments in tuff matrix, wacke and gritstone beds common, trace pyrite and carbonate.
- 310.5 - 318.7 Hornblende porphyry.
- 318.7 - 378.8 Felsic breccia, chaotic tuff breccia composed of felsic latite fragments in tuffaceous matrix. Barren.
- 378.8 - 411.5 Basalt, rich in analcite phenocrysts ("bladed porphyry"). Barren. End of hole.

180M-3

- 0.0 - 12.8 Pyritic siltstone, bedding 50°, rich in fine grained pyrite.
- 12.8 - 14.0 Fault gouge, 45°.
- 14.0 - 45.5 Pyritic siltstone and coarse tuff, rich in pyrite (5%), local layers felsic breccia. Bedding 30°.
- 45.5 - 163.4 Felsic breccia, lapillistone, and coarse tuff. Interlayered units, rich in pyrite. Poly-lithologic tuff breccias common. Bedding 40°.

- 163.4 - 231.0 Latite porphyry, grey, numerous chloritic seams, locally sheared and brecciated. Pyritic, 2-5%.
- 231.0 - 287.9 Felsic breccia, lapillistone and interlayered massive latite porphyry. Numerous pyrite-chlorite seams ("crackle breccia"). Anomalous gold content 272-284m.
- 287.9 - 306.3 Siltstone and tuff. Mottled grey, well bedded pyritic tuff. Bedding 45°, pyrite 2-10%. End of hole.

180M-4

- 0.0 - 169.8 Latite porphyry and breccia, grey/white, medium to fine grained, 80% plagioclase micro-lites. 10% porphyry fragments to 10cm. 2% pyrite and pyrrhotite. Mainly polyolithologic breccia 147-170m. Anomalous gold content 121-137m.
- 169.8 - 238.4 Latite porphyry, massive, accessory fragments (15%). 5% pyrite. Bleached zones of mottled brown/green and envelopes on fractures. "Crowded" porphyry 208-238m.
- 238.4 - 243.4 Felsic breccia. Variety of latite fragments, siltstone fragments to 5cm.
- 243.4 - 304.8 Latite porphyry. Massive, mottled grey, pyrite content 2% - 5%. End of hole.

DISBURSEMENTS

Salaries

Geologist, P. Fox, 15 days @ \$150/day	\$750	
Sampler, I. McCosh, 15 days @ \$ 30/day	<u>300</u>	\$ 1,050

Bulldozer

Quesnel Redi-Mix invoice	
Roads, drill site preparation	18,149

Assays

Acme Analytical Laboratories Ltd.	
1344 assays for Au, Ag, Cu @ \$13.66	18,353

Drilling

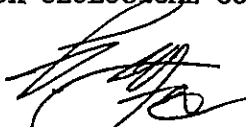
J.T. Thomas, 1415 metres BQWL	
By invoice	135,134

TOTAL	<u>\$ 172,686</u>
-------	-------------------

Total per metre \$	122
--------------------	-----

All work paid for Dome Exploration (Canada) Limited.

Prepared by
FOX GEOLOGICAL CONSULTANTS LTD.

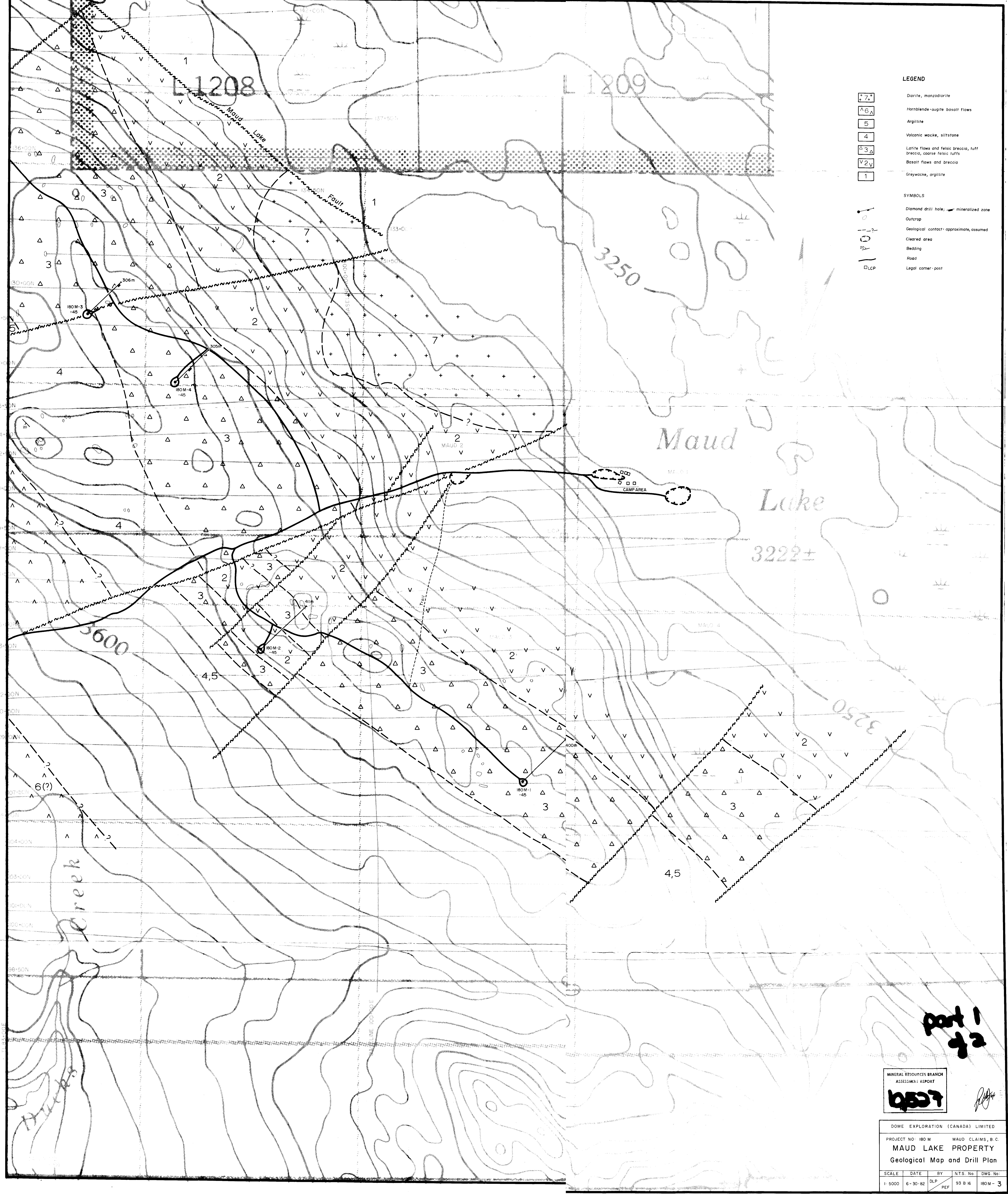

P.E. Fox Ph.D. P.Eng.

June 30, 1982.

APPENDIX

DRILL RECORDS

180M1-4



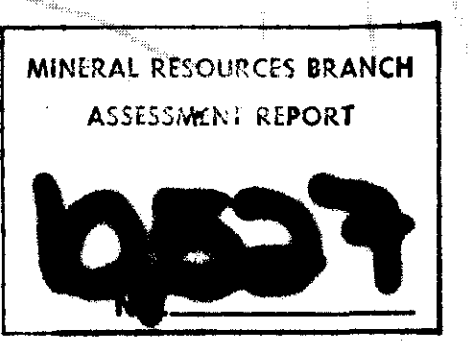
LEGEND

- 7 Diorite, monzodiorite
- 6 Hornblende-augite basalt flows
- 5 Argillite
- 4 Volcanic wacke, siltstone
- 3 Latic flows and felsic breccia, tuff breccia, coarse felsic tuffs
- 2 Basalt flows and breccia
- 1 Greywacke, argillite

SYMBOLS

- Diamond drill hole; mineralized zone
- Outcrop
- Geological contact - approximate, assumed
- Cleared area
- Bedding
- Road
- Legal corner - post

Part 1 of 2



DOME EXPLORATION (CANADA) LIMITED
 PROJECT NO: 180 M MAUD CLAIMS, B.C.
MAUD LAKE PROPERTY
 Geological Map and Drill Plan

SCALE	DATE	BY	N.T.S. No.	DWG. No.
1:5000	6-30-82	DLP PEF	93 B 16	180M-3