

82-559-10618 b

ODESSA EXPLORATIONS INC.
1001 - 1166 ALBERNI STREET
VANCOUVER, BRITISH COLUMBIA

ASSESSMENT REPORT

on a

MAGNETOMETER SURVEY

on the

CORE 3 AND CORE 4 CLAIMS

SIMILKAMEEN MINING DIVISION

NTS 92H/9W and 10E

Lat. 49°40.5'N.

Long. 120°30'W.

by

R.J. ENGLUND, B.Sc.,

STRATO GEOLOGICAL ENGINEERING LTD.

103 - 709 Dunsmuir Street

Vancouver, British Columbia

July 25, 1982

MINERAL RESOURCES BRANCH
ASSESSMENT REPORT
10618



STRATO GEOLOGICAL ENGINEERING LTD.
103-709 DUNSMUIR STREET
VANCOUVER, BRITISH COLUMBIA
V6C 1M9

TELEPHONE (604) 687-4610

MAGNETOMETER SURVEY

CORE 3 and CORE 4 CLAIMS

SUMMARY

A recently completed total field magnetometer survey over the central portion of the Core 3 claim shows highly variable magnetic results which are considered characteristic of some of the Nicola Group rocks.

A series of northerly trending magnetic lows are flanked by significant magnetic high anomalies. Although these results may be somewhat attributable to significant variation in overburden thickness, the magnetic results suggest follow-up exploration is certainly warranted.

A geochemical soil sampling program is recommended to establish any mineral relationships to the magnetic results and the survey area should be expanded to cover the rest of the claim areas.

Respectfully submitted,

Strato Geological Engineering Ltd.

Ralph J. Englund, B.Sc.,
Geophysicist

July 25, 1982

TABLE OF CONTENTS

	<u>Page</u>
Summary	(i)
Introduction	1
Location, Access, Topography	1
Claims	3
General Geology	3
Instrumentation & Survey Procedures	6
Discussion of Results	6
Conclusions & Recommendations	7
References	8
Time-Cost Distribution	9
Certificate	10

LIST OF FIGURES

Figure 1	Location Map	2
Figure 2	Claim Map	4
Figure 3	Topography Map	5
Figure 4	Magnetic Data Map	Leaflet
Figure 5	Magnetic Contour Map	"

INTRODUCTION

Pursuant to a request by the directors of Odessa Explorations Inc. a magnetometer survey was carried out over a portion of the Core 3 claim during June 1982.

The intent of the survey work was to delineate any geological contacts, structure, and/or faults within the survey area. The results of 11 kilometres of magnetic survey data are presented in this report.

LOCATION, ACCESS, TOPOGRAPHY

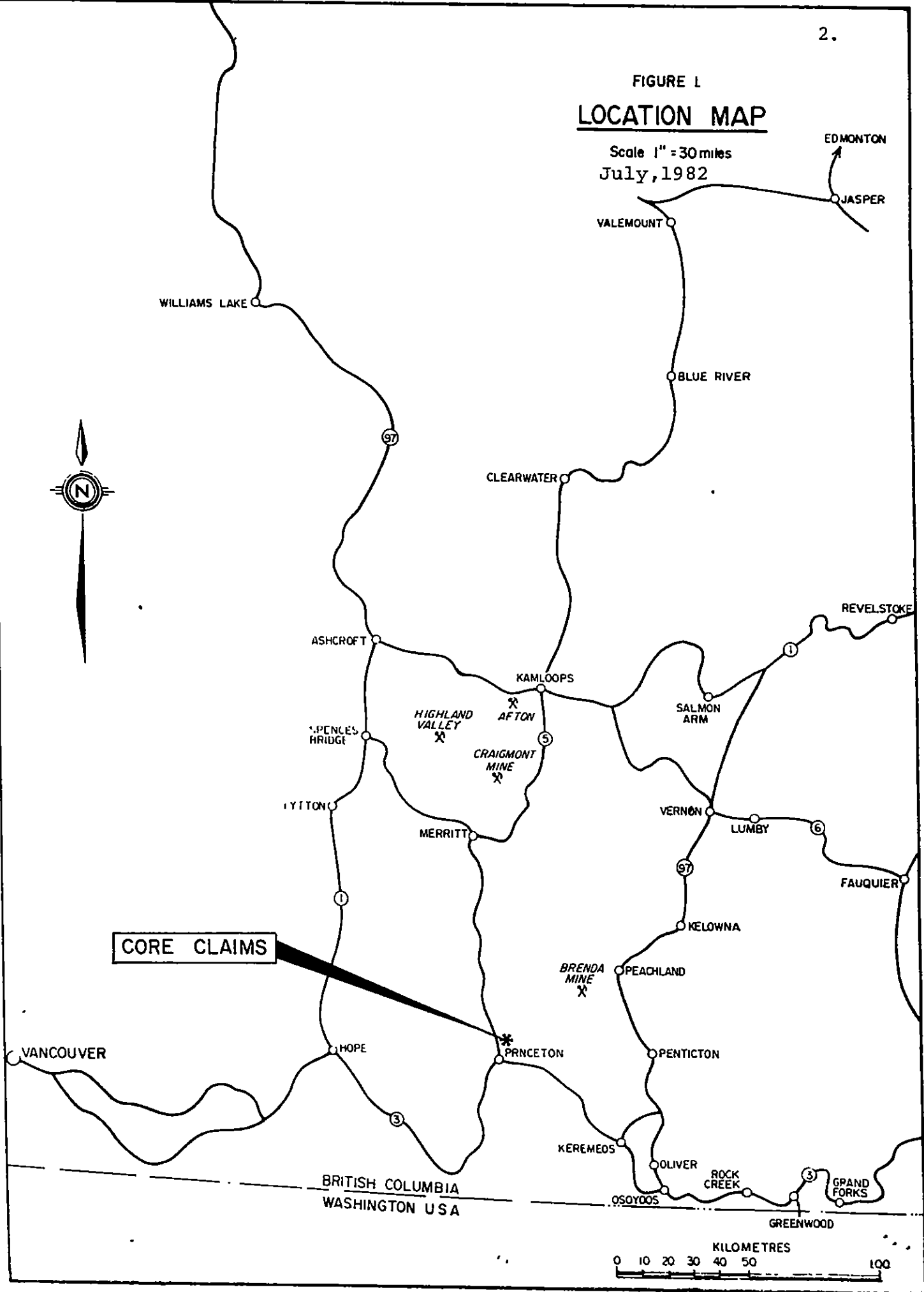
The Core 3 & 4 claim group is located some 24 kilometres north of Princeton, B.C. Access to these claims is from the Princeton-Merrit Highway by the Mizzula Lake road along Summers Creek, a distance of 16.5 kilometres from the highway turnoff.

A logging road to Rampart Lake provides easy access to the central areas of the Core 3 claim. Rampart Lake lies in the central area of the Core 3 property and topographical relief is low in most areas. Elevations over the property vary between 1250 metres in the southeast corner of just over 1400 metres above sea level in the northwest claim areas. Much of the area is rather swampy and there is evidence of significant overburden cover.

FIGURE 1 LOCATION MAP

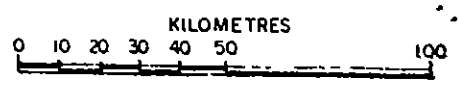
Scale 1" = 30 miles
July, 1982

EDMONTON
JASPER



CORE CLAIMS

BRITISH COLUMBIA
WASHINGTON USA



CLAIMS

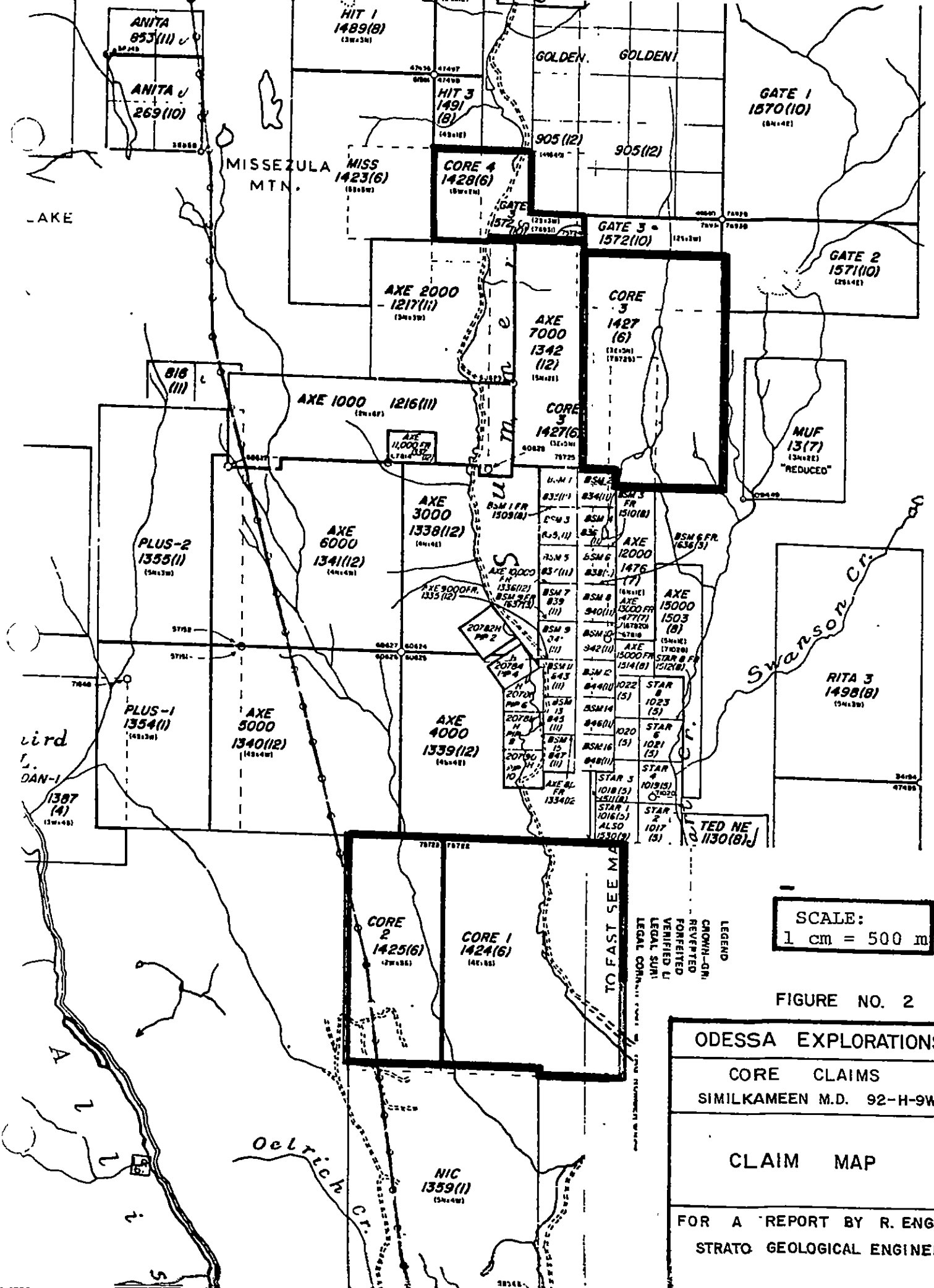
The Core 3 and Core 4 mineral claims are located in the Similkameen Mining Division, some 24 kilometres north of Princeton, B.C. and are recorded as follows:

<u>Claim</u>	<u>Record No.</u>	<u>Units</u>	<u>Expiry Date</u>
Core 3	1427(6)	15	June 15, 1982
Core 4	1428(6)	10	June 15, 1982

The claims are shown on the B.C. Department of Mines and Petroleum Resources Claim Map 92H/9W and 10E. Assessment work has been filed, this report being part of the work, to keep the claims in good standing until June 1983.

GENERAL GEOLOGY

The property, as mapped by H.M.A. Rice, is totally underlain by the Nicola Group consisting of vari-coloured lava, argillite, tuff, limestone, chlorite and sericite schist. The claim area is generally covered with overburden.



TO FAST SEE MA

CORE 1 FOREST

CORE 2

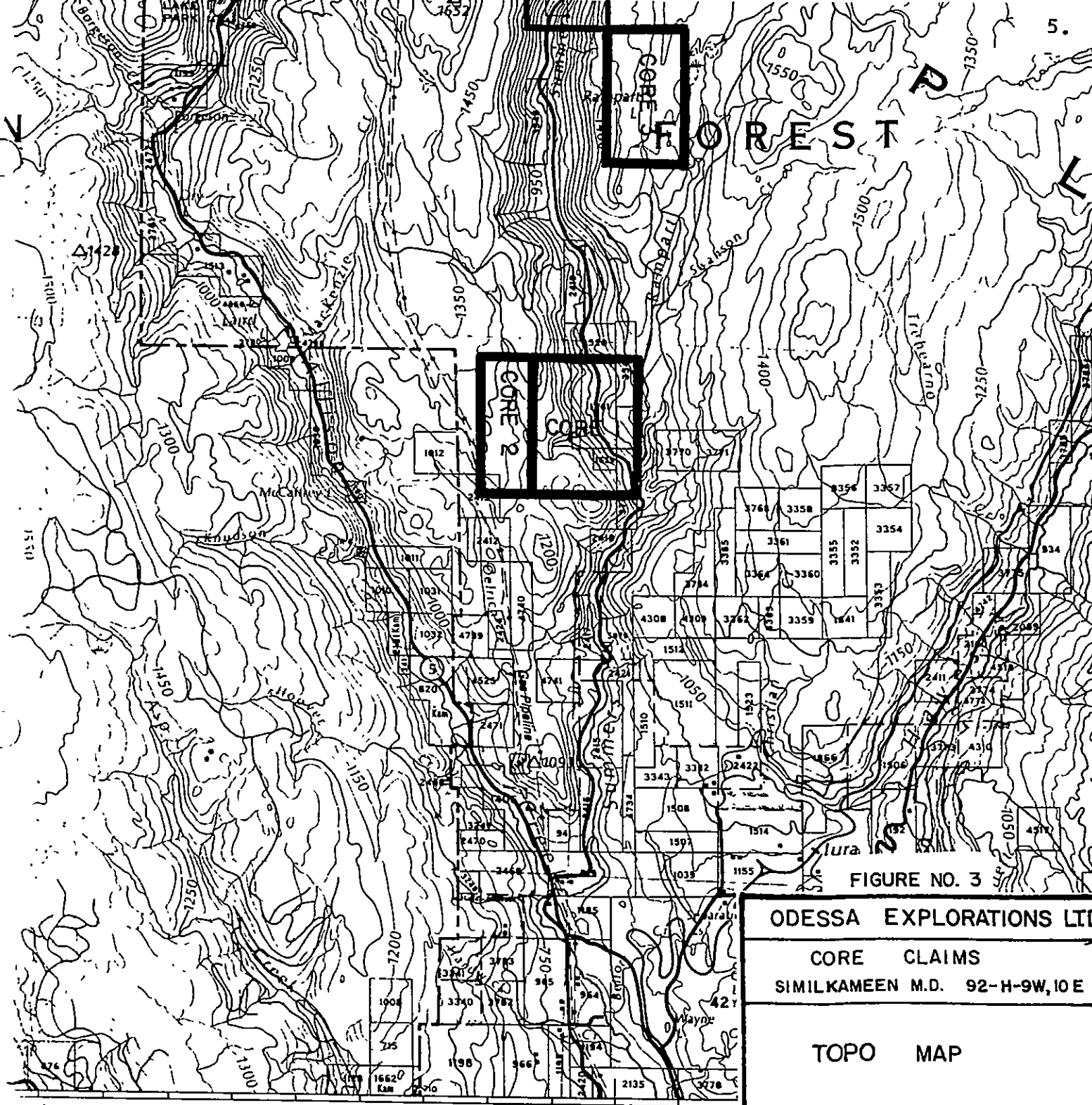


FIGURE NO. 3

ODESSA EXPLORATIONS LTD

CORE CLAIMS

SIMILKAMEEN M.D. 92-H-9W, 10 E

TOPO MAP

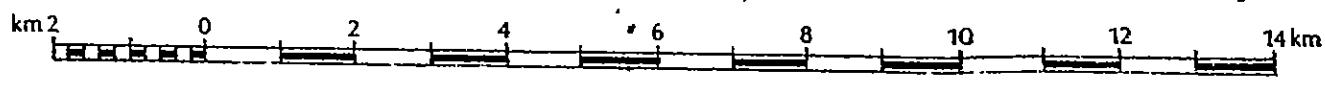
**FOR A REPORT BY R. ENGLUND
STRATO GEOLOGICAL ENGINEERING**

77 74 78 80 30' 32'
 m To Princeton - 14 km To Princeton - 5 km

TULAMEEN

Scale 1:100 000

(1 cm = 1 km)



INSTRUMENTATION & SURVEY PROCEDURE

A magnetic survey was carried out over an 11 kilometre grid in the central claim area. East-west survey lines were compassed, chained and flagged at 100 metre line separation and 50 metre station intervals. The grid was tied into existing old claim posts and the claim L.C.P.

The survey was conducted with a Scintrex MP2 Portable Proton Precision Magnetometer measuring the total magnetic field to an accuracy of better than ± 5 gammas. All survey data was tied to an established base station and all lines were "looped" at frequent intervals to allow for correction of diurnal variations in accordance with standard practice. The methods are well known and fully described in the literature.

DISCUSSION OF RESULTS

Magnetic relief in the survey area is highly variable and generally reflects the rather "noisy" results observed in other areas underlain by the Nicola Volcanics.


A series of magnetic lows trend near northerly through the survey area. These magnetic lineations may be representative of shear zones or significant variations in overburden thickness. The magnetic highs, on the west side of Rampart Lake and flanking the magnetic low trends (Line 1S-5E; Line 9N-11+50E; and Line 6N-3+50E) warrant follow-up exploration to explain the cause of the anomalies.

CONCLUSIONS AND RECOMMENDATIONS

The magnetic results, being highly variable, indicate the survey area as generally being underlain by the Nicola Volcanic rock unit. A series of magnetic lows trend northerly through the survey area and are flanked in many areas by significant magnetic highs.

The anomalous magnetic zones warrant follow-up exploration and a program of soil geochemical sampling is recommended to establish the mineral relationship to magnetic results.

Respectfully submitted,
STRATO GEOLOGICAL ENGINEERING LTD.


Ralph J. Englund, B.Sc.
Geophysicist

July 25, 1982

REFERENCES

- (1) Geological Survey of Canada, Memoir 243, Geology and Mineral Deposits of the Princeton Map Area, British Columbia, by H.M.A. Rice, 1960.

TIME-COST DISTRIBUTION

The magnetic survey of the Core 3 and Core 4 claims was conducted by Strato Geological Engineering Ltd. during the period May 27 to June 2, 1982 inclusive. A listing of personnel and distribution of costs are as follows:

Personnel

S. Nowak, B.Com.	Project Supervisor and Geophysical Operator
J. Gibson	Field Assistant

Cost Distribution

Labour	\$ 1,500.00
Room & Board	540.00
Transportation	420.00
Instrument Rental	180.00
Drafting & Miscellaneous	395.90
Report	<u>1,000.00</u>
Total	\$ 4,035.00



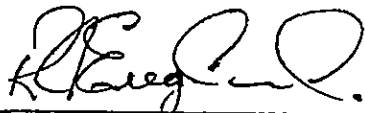
Strato Geological Engineering Ltd.

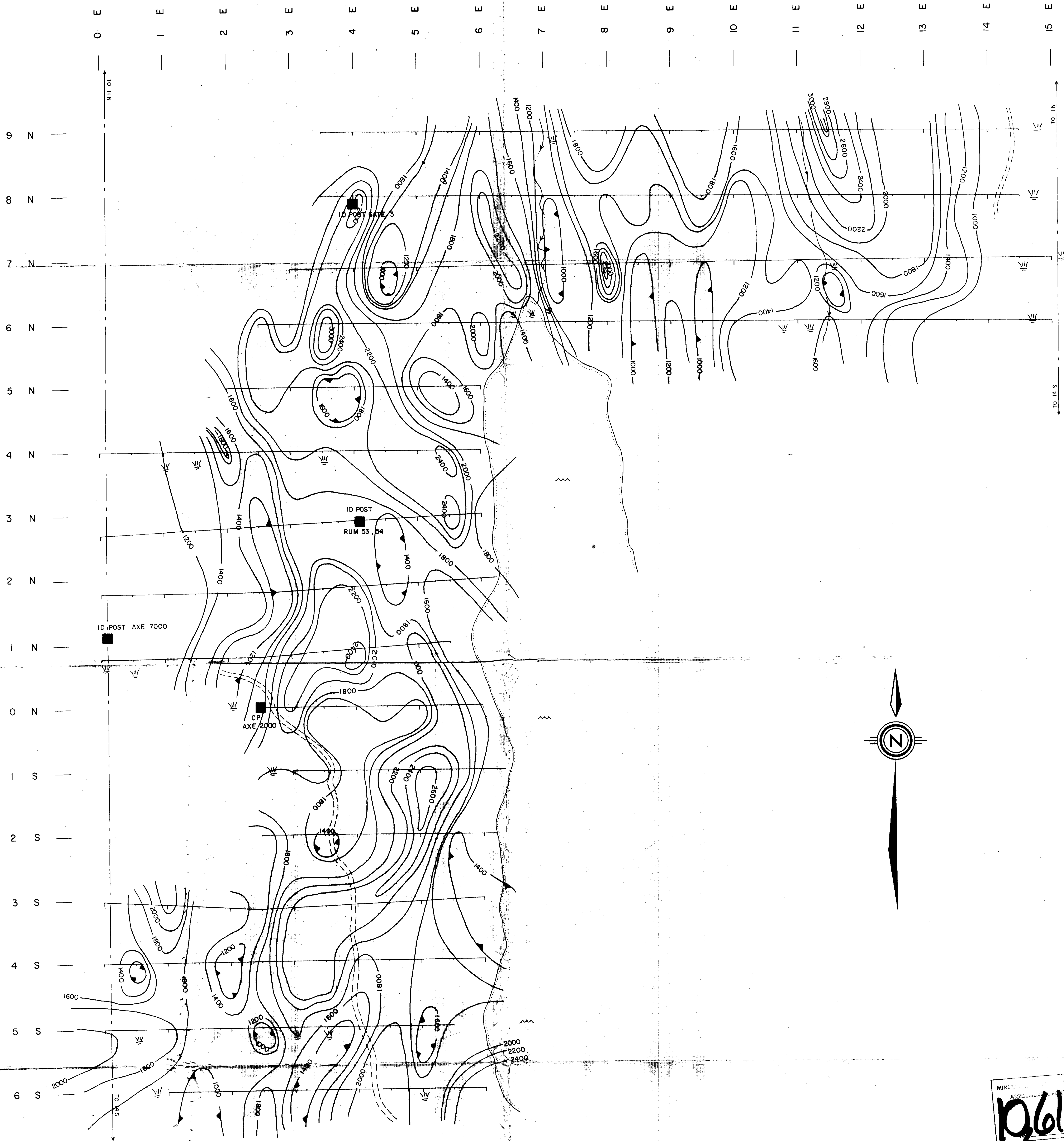
CERTIFICATE OF QUALIFICATIONS

I, Ralph J. Englund, do hereby certify that:

- (1) I am a practising geophysicist with offices at 103 - 709 Dunsmuir Street, Vancouver, B.C., Canada, V6C 1M9
- (2) I am a graduate of U.B.C. where I obtained my B.Sc., (Physics) in 1971.
- (3) I am a member in good standing of the following professional organization:
 - (a) B.C. GEOPHYSICAL SOCIETY.
- (4) I have been engaged in the study, teaching, and practice of exploration geophysics continuously for 9 years. I have worked as a geophysical consultant on numerous projects in Western North America since 1972.
- (5) The Geophysical field work and the interpretation of the results in this report were done under my direct supervision.
- (6) I have no direct, indirect or contingent interest in the securities of Odessa Explorations Inc., or the Core 3 and Core 4 claim, nor do I expect to receive any such interest.

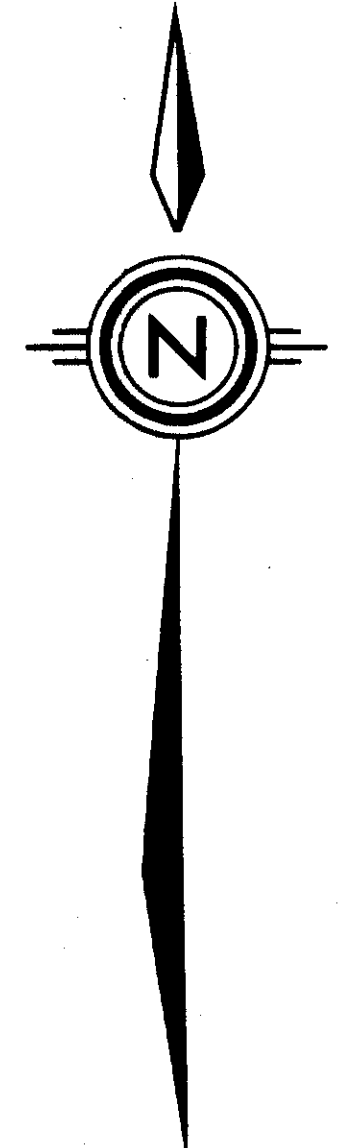
Dated in Vancouver, B.C. this 25th day of July, 1982.


Ralph J. Englund, B.Sc.
Geophysicist

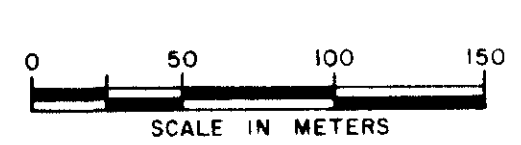


- LEGEND**
- ROAD
 - - - - - STREAM
 - ~ ~ ~ LAKE
 - ≡ SWAMP
 - CLAIM POST
 - - - - - CLAIM BOUNDARY

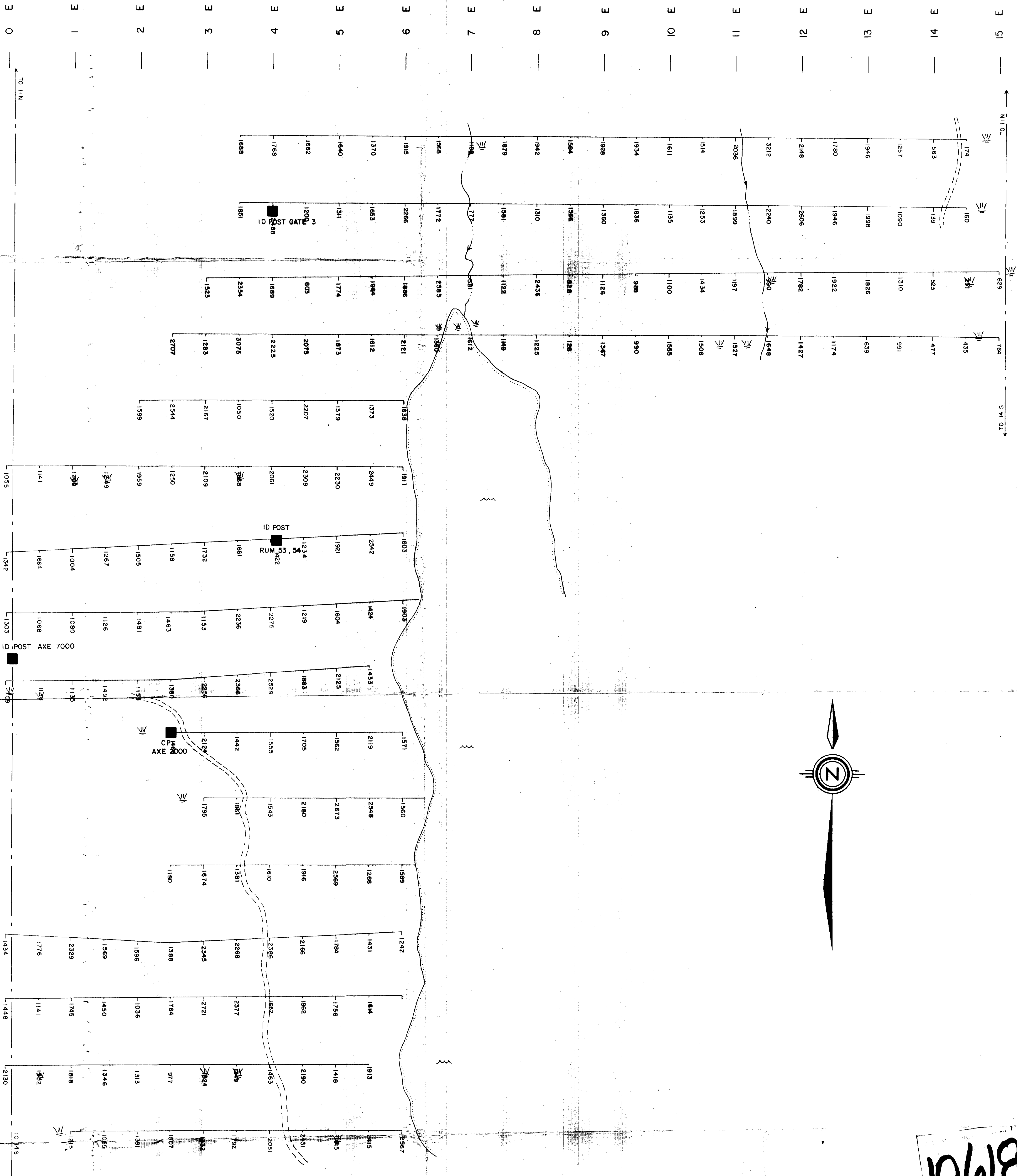
NOTE: INSTRUMENT - MP-2 PROTON PRECESSION MAGNETOMETER
 TOTAL MAGNETIC FIELD MEASUREMENT
 MAGNETIC BASE VALUE - 56000 GAMMAS



ODESSA EXPLORATIONS LTD. VANCOUVER B. C.	
CORE 3 CLAIM SIMILKAMEEN M.D. NTS 92-H-9W, 10E	
MAGNETOMETER SURVEY TOTAL FIELD CONTOUR MAP	
TO ACCOMPANY A REPORT BY R. J. ENGLUND	<i>R. J. Englund</i>
FIGURE NO 5	DATED: JULY, 1982

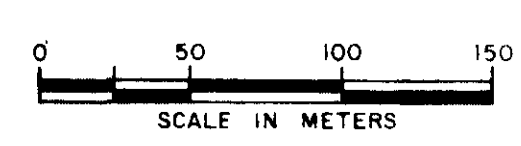
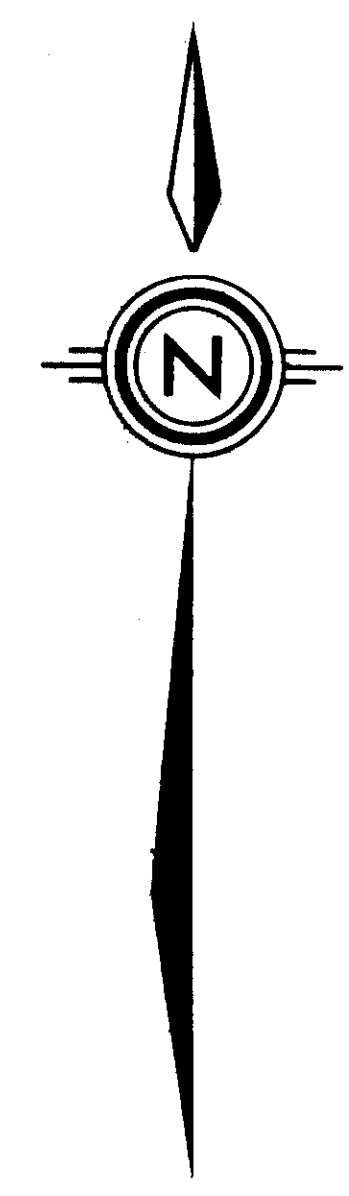


MIN. 1:50000
 ASSESSMENT
 12618



- LEGEND**
- ROAD
 - STREAM
 - ~ LAKE
 - ≡ SWAMP
 - CLAIM POST
 - - - CLAIM BOUNDARY

NOTE: INSTRUMENT - MP-2 PROTON PRESSION MAGNETOMETER
 TOTAL MAGNETIC FIELD MEASUREMENT
 MAGNETIC BASE VALUE - 56000 GAMMAS



ODESSA EXPLORATIONS LTD. VANCOUVER B.C.	
CORE 3 CLAIM SIMILKAMEEN M.D. NTS 92-H-9W, 10E	
MAGNETOMETER SURVEY DATA MAP	
TO ACCOMPANY A REPORT BY <i>R. Englund</i>	
FIGURE NO 4	DATED JULY, 1982

10618