

1982 DIAMOND DRILL HOLE REPORT

FOR ASHLU GROUP

ASH; ASH 2; ASH 3 UN; ASH 6 UN;
ASH 7 UN; ASH 8 UN; CLARA 3 UN;
TOAD 12 UN, SLIM 1, SLIM 2, SLIM 3
FRACTIONS

VANCOUVER MINING DIVISION

NTS 92G-14E

49°56' N; 123°24' W

OPERATOR: WALTER BABKIRK, Prospector
2055 Como Lake Avenue,
Coquitlam, BC

FOR OWNER: SLIM'S EXPLORATION AND MINING
LTD.
2055 Como Lake Avenue,
Coquitlam, BC

BY: WALTER BABKIRK
August 1982

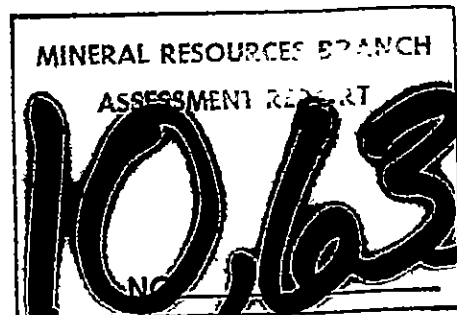


TABLE OF CONTENTS

	<u>PAGE NO.</u>
INTRODUCTION	1
INDEX MAP	2
CLAIM MAP	3
DRILL HOLE LOCATION MAP	4
HISTORY	5, 6 & 7
OUTLINE OF WORK AND RESULTS	7
DIAMOND DRILLING CORE LOG	8, 9 & 10
STATEMENT OF COST	11
STATEMENT OF QUALIFICATIONS	12

3

INTRODUCTION

ASHLU GROUP

The Ashlu Group is located in the Vancouver Mining Division on Claim Sheet 92-G14, W/2, about 49°56' latitude No, and 123°24' longitude W, 8 miles up Ashlu Creek from its junction with the Squamish River (figs. 1 and 2)

The property is accessible via a highway up the Squamish River and an 8 - mile logging road up Ashlu Creek, for a total distance of about 28 miles from Squamish.

Owner of the claims that comprise the Ashlu Group are;

SLIM'S EXPLORATION AND MINING LTD.

ASH 18684 K
ASH #2 56 ✓
ASH 3 UN 74 ✓
ASH 6 UN 72 ✓
ASH 7 UN 98 ✓
ASH 8 UN 99
CLARA 3 UN 73
TOAD 12 UN 308 ✓
SLIM 1 FRACTION 1204
SLIM 2 FRACTION 1205
SLIM 3 FRACTION 1206

The Ashlu Group of mineral claims consist of 33 contiguous units,
plus 3 SLIM FRACTIONS

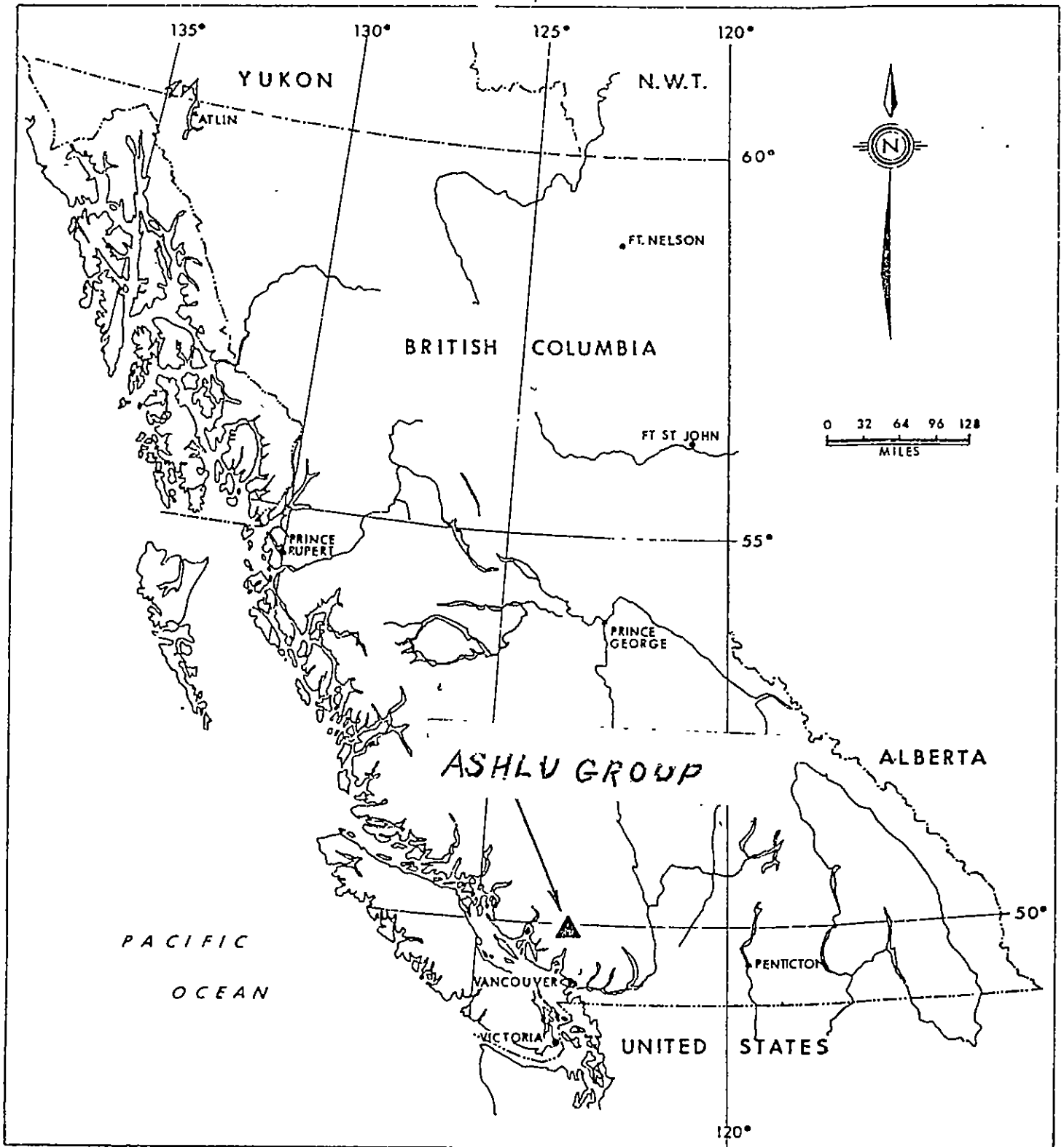
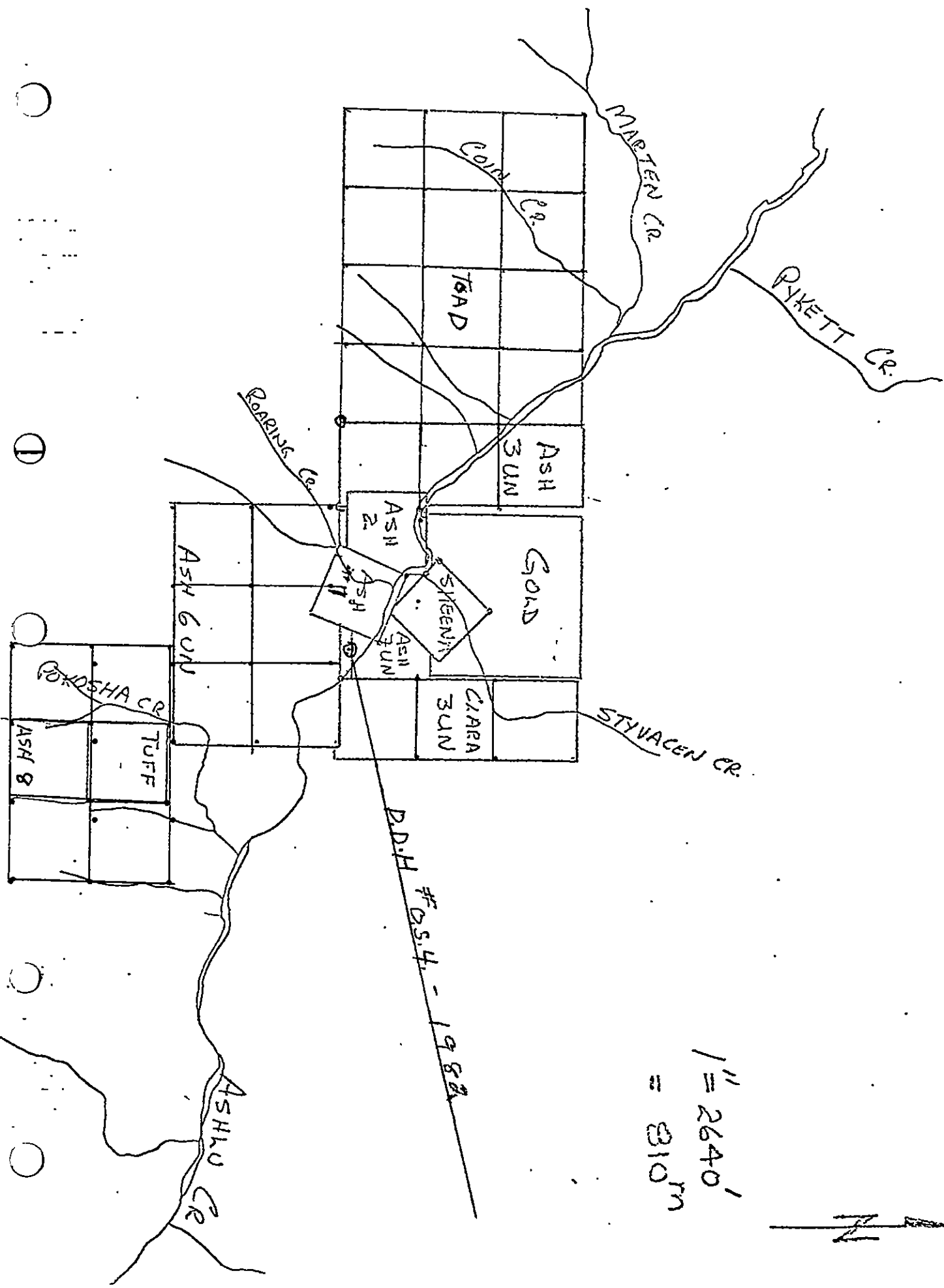


FIG. No. 1

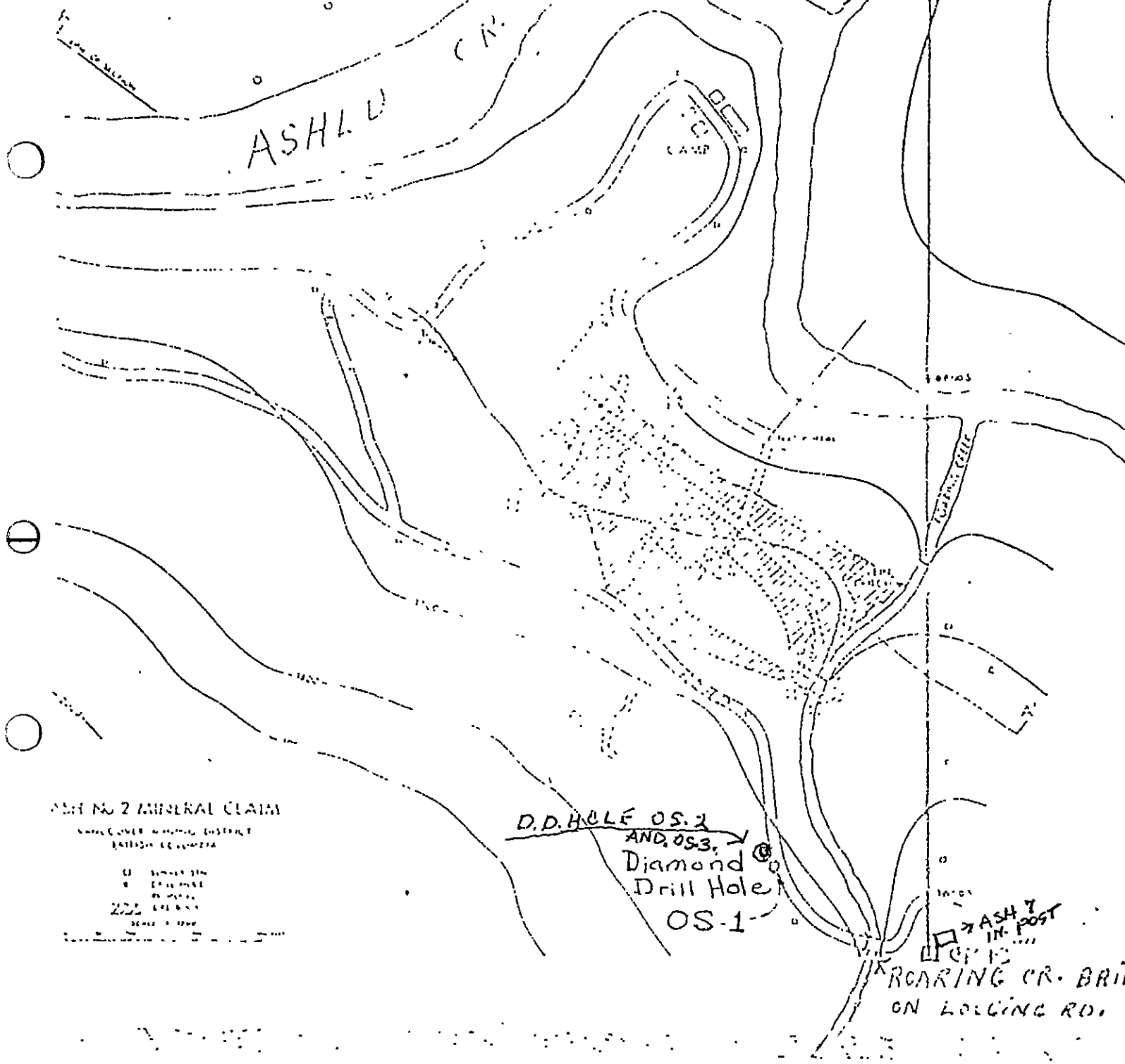
REGIONAL LOCATION MAP

ASHLU GROUP
BRITISH COLUMBIA



1" = 2640'
 = 810m

925114W



- ASH 18684 K
- ASH #2 56
- ASH 3 UN 74
- ASH 6 UN 72
- ASH 7 UN 98
- ASH 8 UN 99
- CLARA 3 UN 73
- TOAD 12 UN 308

HISTORY

The "Gold Coin" group of mineral claims was staked in 1923 by Mr. Fred Pykett and Associates. They had prospected the area for several seasons prior to dsicovering a well mineralized, gold-quartz vein exposed in the steep gorge of Roaring Creek, a small tributary of Ashlu Crrek.

During the next few years development work consisted of driving a 75-foot drift along the quartz vein at a point some hundred feet plus lower than the outcrop. The property was reported on in 1924 and 1925 by Provincial geologists who collected a total of 28 samples for assay, Appendix A.

In 1934, the property was bonded to the Ashloo Gold Mining Syndicate for further development. By this time the main adit level had advanced 390 feet with several raises to the surface outcrop and one deep winze reported to be 109 feet down along the vein as of November, 1935.

In the period 1932 - 39 ore mined amounted to 15,047 tons and yielded 6,396 oz. of gold, 7,154 oz. silver and 66,187 lbs. copper. The mine was closed in the fall of 1939 and was not reactivated after the Second World War.

OUTLINE OF WORK

FILED 1979 WORK REPORT

The property is mapped as granodiorite, quartz monzonite, quartz diorite with probable dyke rock exposed in several creek cuts in

the area. A Gold-tungsten vein occurs on the property in widths up to 10 feet.

Additional outcrop was exposed in the vicinity of bridge crossing Roaring Creek. Surface prospecting revealed a small showing of sulfide mineralization. A magnetometer survey line was run along the road from a location approximately 400 feet East of the bridge to the West boundary of the Ash #2 claim. Magnetometer readings indicated a rise of approximately 3000 gammas across a length of 50 feet located approximately 300 feet of Roaring Creek. It was decided to check the mineralization exposed and the "magnetic high" with a small diameter diamond drill hole. The diamond drill was spotted at the above location. See Drill Hole Location Map, Page 4.

SUMMARY OF RESULTS

One diamond drill hole was drilled to a depth of 54 meters, size 1 1/8" diameter, XRT size. Miner sulfides were present throughout the depth. Two sections were assayed with resulted as indicated below.

		<u>OZ. PER TON</u>	
		AU	AG
OS-1	0 - 0.6 meters	0.396	0.87
	40.9 - 41.1 meters	1.154	0.19

WORK AND RESULTS DIAMOND DRILLING ON ASH CLAIM, RECORD #18684 FOR 1980

O.S. #2 Diamond drill hole was drilled 24' N.W. of hole O.S. #1 to a depth of 68.58 meters, direction bearing 290° N.W., hole size B.B.S.1

1½" O.D., angle 45°, 12 samples were taken and tested for gold, silver, tungsten at 20' intervals and the results marked on the core log, Page 8 of Report.

WORK AND RESULTS DIAMOND DRILLING ON ASH CLAIM
RECORD #18684 FOR 1982

OS. #2 Diamond drill hole was drilled 32.16 Meters further to a total depth of 100.74 meters and core was logged as OS. 3 and Core Log is submitted on Page 9 of Report.

OS. #4 Diamond drill hole was drilled on claim boundary ASH7. 156.06 meters 90° T. Due. East from ASH 2 claim post 1 South. Hole was drilled at an angle 52° direction 30° T. North to a depth of 91.44 meters.

Good sulphides observed in the core all the way from surface. Core Log submitted on Page 10 of Report.

The core is stored at the mine site

CLAIM NO. 18684 ASH

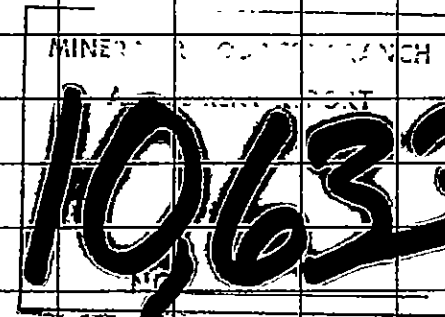
DIAMOND DRILL RECORD

PROPERTY SLIM'S EXPLORATION AND MINING LTD. HOLE NO. OS - 2

LATITUDE 49° 55' ELEVATION 1709 BEARING 290° DEPTH 68.58 Meters STARTED April 1, 1980 COMPLETED April 15, 1980

DEPARTURE SECTION 92G-W14 DIP 45° DRILLED BY WALTER BABKIRK LOGGED BY WALTER BABKIRK

DEPTH FEET	FORMATION	SAMPLE NO.	FROM	TO	WIDTH	ASSAYS			
						AU	AG	WO3	
0 - 20	QUARTZ AND SLICKENSIDE SCHIST SULPHIDES	1	5	7	2'	.35	.29	.09	WO3
20 - 40	QUARTZ MONZONITE, DIORITE STRINGERS	2	25	29	4'	.27	.21	.15	WO3
40 - 60	QUARTZ MONZONITE, DIORITE STRINGERS SULPHIDES	3	52	58	3'	.31	.30	.10	WO3
60 - 80	QUARTZ MONZONITE, DIORITE, SULPHIDES	4	76	79	3'	.45	.30	.05	WO3
80 - 100	QUARTZ MONZONITE, DIORITE, GOOD SULPHIDES	5	90	95	5'	.04	.01	.21	WO3
100 - 120	QUARTZ MONZONITE, DIORITE, PYRITE	6	115	117	2'	.10	TRACE	TRACE	
120 - 140	QUARTZ MONZONITE, DIORITE, BIOTITE MICA	7	124	127	3'	TRACE	TRACE	TRACE	
140 - 160	QUARTZ MONZONITE	8	142	148	6"	.21	.19	TRACE	
160 - 180	QUARTZ MONZONITE, QUARTZ DIORITE, SULPHIDES	9	169	173	4'	.54	.49	10%	WO3
180 - 200	QUARTZ MONZONITE, BIOTITE MICA SULPHIDES	10	183	187	4"	---	---	10%	WO3
200 - 220	QUARTZ MONZONITE, DIORITE STRINGERS	11	209	215	6'	2.0	---	12%	WO3
220 - 225	QUARTZ MONZONITE, DIORITE SULPHIDES	12	221	225	4'	2.5	---	15%	WO3

LOGGED BY WALTER BABKIRK
DRILLER, QUALIFIED PROSPECTOR*Walter Babkirk*

ASHLU GROUP MINERAL CLAIMS

WORK PROGRAM FOR 1982

STATEMENT OF COSTS FOR DIAMOND DRILLING

	OS#3	OS#4
Core drilled 32.61 meters of 1 ½" O D Hole at \$40.00 per meter OS #3	\$ 1,304.40	\$
Core drilled 92.44 meters of 1 ½" O D Hole at \$40.00 per meter OS #4		3,697.60
Three Men for 5 days at \$50.00 per day per man - wages - OS #3	750.00	
Three Men for 17 days at \$50.00 per day per man - wages - OS #4		2,550.00
Diamond Bits, Coring Bits, Reaming Shells OS#3 & OS#4	450.00	860.23
Parts and Miscellaneous Equipment (Propane, Nails Drill Parts, etc.)	60.00	240.00
Gas, Oil for Drill and Rod Grease	25.00	65.00
Food and Transportation for 4 Wheel Drive	120.00	240.00
	<u>\$ 2,709.40</u>	<u>\$ 7,652.83</u>
GRAND TOTAL	<u>\$ 10,362.23</u>	

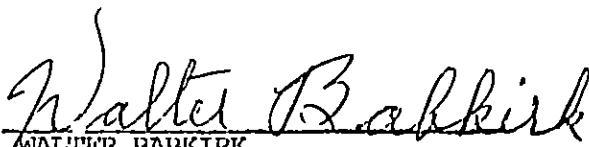
Walter Babkirk
WALTER BABKIRK
Qualified Prospector

STATEMENT OF QUALIFICATIONS

I, WALTER BABKIRK, of 2055 Como Lake Avenue, in the Municipality of Coquitlam, in the Province of British Columbia, HEREBY CERTIFY the following qualifications:

I have been a full time Prospector for the past 11 years in British Columbia.

I passed the Rock and Minerals Test in 1968 with D. H. RAE and have been on the grubstake until the year 1978 with the Government Grubstake Program.


WALTER BABKIRK
Qualified Prospector