

R. W. PHENDLER, P.Eng., GEOLOGICAL CONSULTANT,
EXPLORATION AND MINING
7360 DECOURCY CRES., RICHMOND, B.C. V7C 4E9 (604) 271-2588

October 24, 1982

Re: Geochemical Survey, Crump Property
Osoyoos Mining Division, British Columbia.

The accompanying report covers a survey carried out under my supervision carried out by Mr. H.O. Plank between June 23 - 27, 1982. This work was part of the recommendations which were included in my report on the property dated May 26, 1982. I examined the area on May 6, 1982 with Mr. Plank and outlined the survey procedure to him. This included the establishment of a grid and the taking of geochemical samples. Upon studying the enclosed report, I am satisfied that the survey was carried out in a workmanlike manner and the results and interpretation are of a high standard.

It is considered that background values for copper are 25 ppm, threshold values are between 26 and 99 ppm, anomalous values are above 100 ppm and values greater than 1,000 are considered highly anomalous. Two copper anomalies are shown, one in the south central part of the survey (with an extension to the north) and the second 200 meters to the northwest.

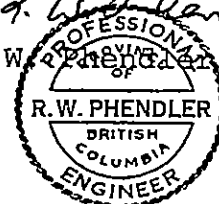
The principal zone (in the south central region) also shows anomalous gold values with values in excess of 0.400 ppm. Background is considered to be 0.01 ppm and threshold from 0.02 to 0.4 ppm Au.

The survey has shown that geochemical work is an effective exploration tool in this area and additional work is recommended including an electromagnetic survey and diamond drilling.

**GEOLOGICAL BRANCH
ASSESSMENT REPORT**

10,718

R. W. Phendler
R. W. Phendler, P. Eng.



GEOCHEMICAL REPORT

AGIO RESOURCES CORPORATION

FAP and CRU Mineral Claims, Trout Creek, Summerland, B.C.

Osoyoos Mining Division

Lat. 49. 37N Long 119. 52W. N.T.S. 82E/13

Author: H. O. Plank Prospector

Date of Work June 23-27, 1982

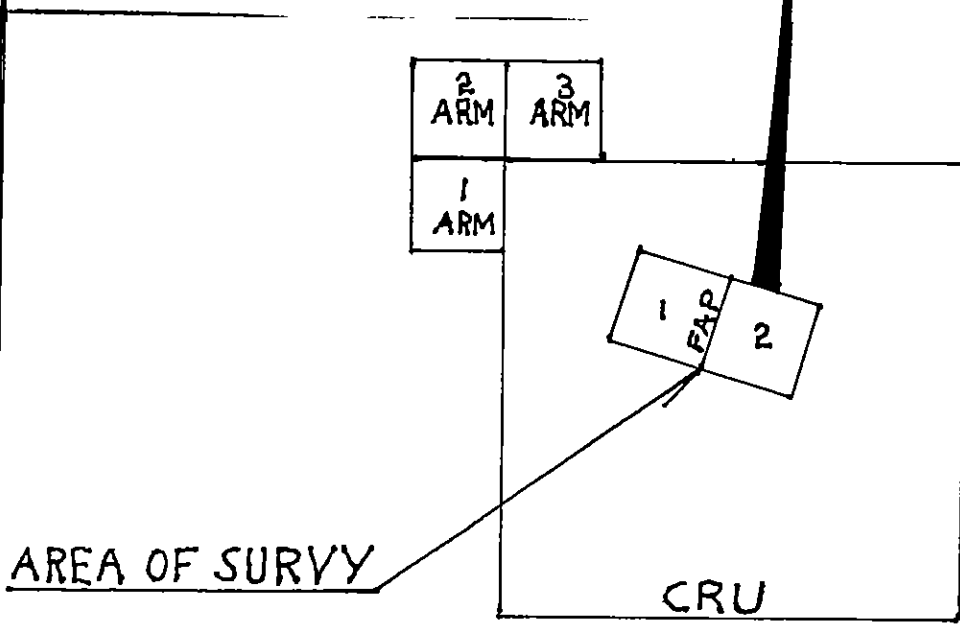
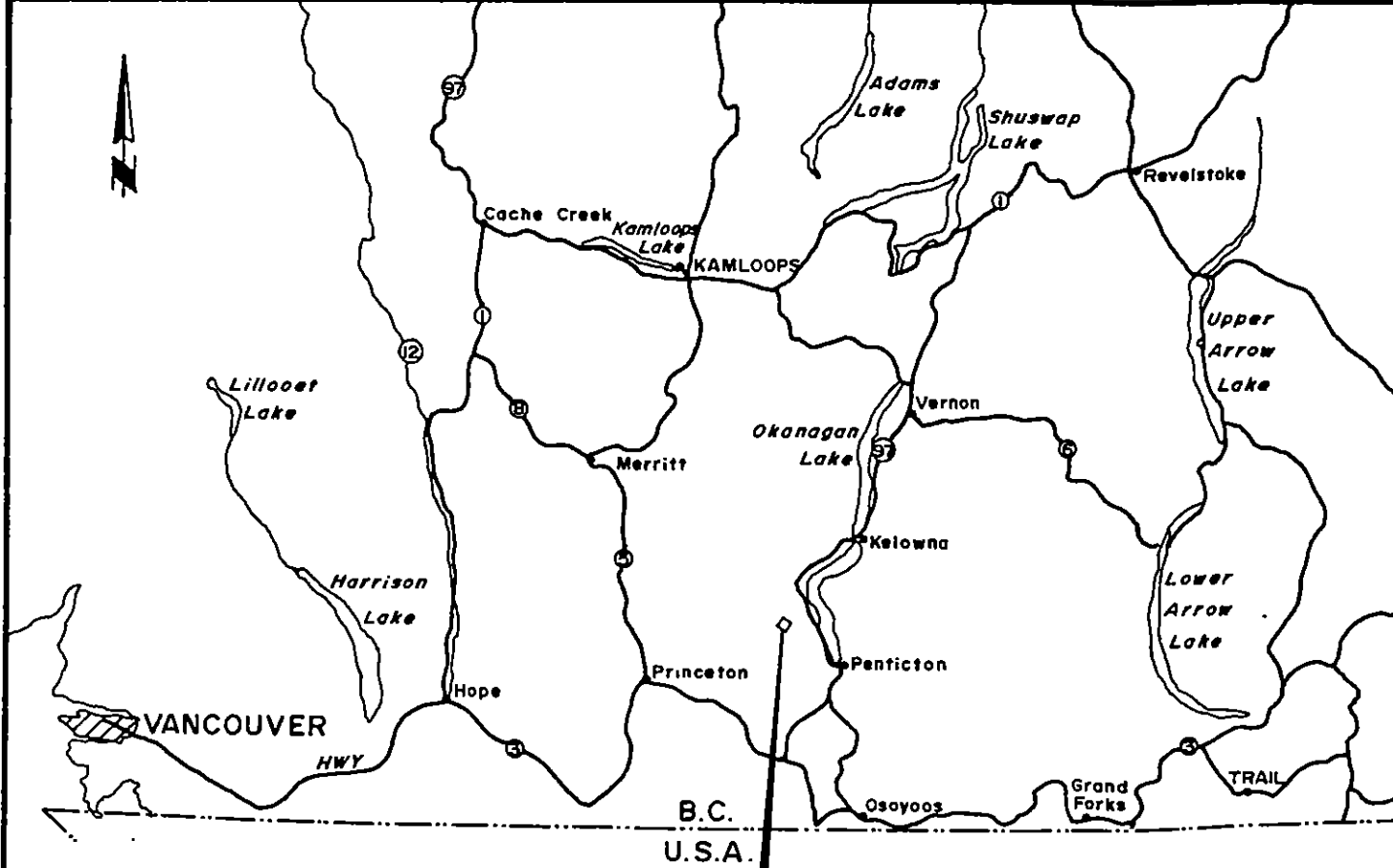
Date of Report July 30, 1982

C O N T E N T S

Introduction.....1
Property.....1
Location and Access.....1
Previous Work.....1
Survey Specifications:
 (1) Survey Grid.....1
 (2) Geochemical Survey.....2
Data Presentation.....2
Discussion of Results.....2
Conclusions and Recommendations.....3
Statement of Qualifications.....4
Itemized Cost Statement.....5

ILLUSTRATIONS

- Figure 1 - Location and Claims Map
2 - Geochemical Map Gold
3 - Geochemical Map Copper



AGIO RESOURCES CORPORATION
 CRU, FAP, CLAMS

LOCATION AND CLAIMS MAP

SCALE: LOCATION MAP: 1" = 40 MILES

CLAIMS MAP:
 15 MM = 500 M

JULY 12 1982

INTRODUCTION

During the period June 23-27, 1982 H. O. Plank, Prospector Agio Resources Corporation conducted a program of soil sampling over the FAP and part of the CRU mineral claims, Summerland area on behalf of Agio Resources Corporation.

The purpose of the survey was to try and locate any mineralized zones which might carry copper gold mineralization.

PROPERTY

The area of survey, mineral claims FAP 1 and 2 and part of CRU units, illustrated in Figure 1.

LOCATION AND ACCESS

The FAP and CRU mineral claims are situated along Trout Creek 18 KM west of the Village of Summerland, located on the western side of Okanagan Lake, Osoyoos Mining Division, Province of British Columbia. Latitude 49° 37'N, Longitude 119° 52'W N.T.S. 82E/13.

Access to the property is via a good secondary gravel road up Trout Creek. This road passes in an east-west direction through the claim group.

PREVIOUS WORK

Previous work on the survey area consisted largely of trenching, E.M. and magnetometer surveying. Several diamond drill holes have also been completed.

SURVEY SPECIFICATIONS

Survey Grid

The survey grid consisted of east-west traverse lines turned off at right angles every 50 meters from a north baseline directed along true north-south. The lines were chained and flagged at 100 meter intervals. In between lines were surveyed in the south-east baseline area to establish a 400 meter detail grid over a zone of known mineralization. Some 5.4 KM of survey grid were cut and surveyed.

The Geochemical Survey

Geochemical soil samples of the B horizon were obtained with a mattock at 50 and 100 meter intervals along the traverse lines and placed in soil envelopes provided by Acme Analytical Laboratories Ltd. Vancouver, B.C. The soil samples were then delivered to Acme Analytical Laboratories Ltd. where -80 mesh sieving, digestion by perchloric acid and analysis by atomic absorption was carried out under the supervision of professional geochemists.

Some 110 samples were obtained and analysed for copper and gold.

DATA PRESENTATION

The survey data accompanying this report as contour map is at a scale of 1 centemeter to 50 meters as follows:

Figure 2 - Geochemical Map - Gold contoured
at levels

Figure 3 - Geochemical Map - Copper contoured
at levels

DISCUSSION OF RESULTS

The copper geochemical data, Figure 2, shows an area of high response around the south-east of the baseline survey area with several values yielding greater than 500 P.P.M. values. A similar weaker response was obtained at 50W Line 3N, 175W Line 5N. It is thought that the copper values reflect the amount of calcopirite present and since copper is relatively more mobile than gold it would penetrate deeper overburden. Strong gold values, one of greater than 400 P.P.M. gold, were located around 25E Line 00, 25E Line 1N. A strong response was also located at 100E, 125E, 150E Line 2N, 0+00. Weaker but interesting values were located on Line 3N - 100E, 50W, 5N-5W, 7N-150W. Those high geochemical responses likely reflect overburden-covered mineralization.

CONCLUSIONS AND RECOMMENDATIONS

In the later part of June, 1982, a program of soil sampling was conducted over FAP and CRU mineral claims on behalf of Agio Resources Corporation.

The survey located several interesting copper and gold geochemical values, one of which showed greater than 400 P.P.M. gold, and several showed greater than 500 P.P.M. copper in the soil.

In conclusion, then, a limited amount of trenching, geological mapping and possibly diamond drilling would be a logical approach to testing the geochemical values.

Respectfully submitted

H. O. Plank Prospector

AGIO RESOURCES CORPORATION

STATEMENT OF QUALIFICATIONS

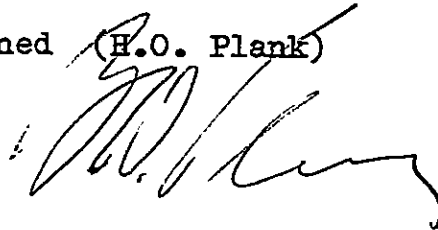
Name: Herman O. Plank
Profession: Prospector
Experience: Prospecting, Mining and Diamond Drilling
since 1956 to present time

Active experience:

Torwest Resources Ltd.
Craigmont Mine Ltd.
Rio Tinto
Stella Metal Ltd.
Highland Bell Ltd.
Austro-Can Explorations Ltd.
Interior Diamond Drilling Ltd.
Okanagan Silica Ltd.
Agio Resources Corporation

DATED AT Vancouver, British Columbia, this 12th day of
July 1982 at 201 - 845 Hornby Street.

Signed (H.O. Plank)



ITEMIZED COST STATEMENT:

Wages and Labour Cost:

H. O. Plank	6 Days at \$130.00	780.00
M. Meier	5 Days at #114.00	570.00
Food and Lodging		210.90
Gas		183.30
Truck Rental		260.00
Assaying 160 Samples		720.00
Total Cost		<u><u>\$2,724.20</u></u>



To: Agio Resources
201 - 845 Hornby St.,
Vancouver, B.C.
V6Z 1V1

Assaying & Trace Analysis

852 E. Hastings St., Vancouver, B. C. V6A 1R6

phone: 253-3158

File No. 82-0496

Type of Samples _____

Disposition _____

GEOCHEMICAL ASSAY CERTIFICATE

SAMPLE No.	Cu	Au								
0+00	425	.290								1
0+25 E	2400	.835								2
0+50	108	.015								3
0+75	255	.015								4
0+100	22	.010								5
0+150	16	.005								6
0+200	26	.015								7
0+250	25	.005								8
0+300 E	16	.010								9
										10
1-N+ 25 E	920	.405								11
50	168	.035								12
75	20	.010								13
100	26	.005								14
125	30	.010								15
150	230	.015								16
175	37	.005								17
200	30	.005								18
1-N+300 E	13	.005								19
										20
2-N+ 25 E	64	.010								21
50	17	.010								22
75	24	.010								23
100	590	.235								24
125	145	.115								25
150	590	.125								26
175	26	.010								27
200	27	.015								28
250	13	.010								29
2-N+300 E	16	.010								30
										31
3-N+ 00	30	.010								32
50 E	38	.015								33
100	21	.050								34
150	37	.010								35
200	19	.010								36
3-N+300 E	16	.010								37
										38
										39
										40

All reports are the confidential property of clients
All results are in PPM.

DIGESTION:.....

DETERMINATION:.....

DATE SAMPLES RECEIVED July 2, 1982

DATE REPORTS MAILED July 7, 1982

ASSAYER

D. Toye
DEAN TOYE, B.Sc.
CHIEF CHEMIST
CERTIFIED B.C. ASSAYER



ACME ANALYTICAL LABORATORIES LTD.

Assaying & Trace Analysis

852 E. Hastings St., Vancouver, B. C. V6A 1R6

phone:253 - 3158

To: Agio Resources,

File No. 82-0496

Type of Samples

Disposition

GEOCHEMICAL ASSAY CERTIFICATE

2

SAMPLE No.	Cu	Au																			
4N+ 00	30	.005																			1
50 E	185	.005																			2
150	14	.005																			3
4N+250 E	11	.005																			4
																					5
5N+ 00	48	.005																			6
100 E	14	.005																			7
200	17	.005																			8
5N+300 E	16	.005																			9
																					10
6N+ 00	12	.005																			11
50 E	13	.005																			12
150	14	.005																			13
6N+250 E	12	.005																			14
																					15
7N+ 00	17	.005																			16
100 E	14	.005																			17
200	14	.005																			18
7N+300 E	13	.005																			19
																					20
8N+ 00	16	.005																			21
50 E	17	.005																			22
150	15	.005																			23
8N+250 E	16	.005																			24
																					25
9N+ 00	24	.005																			26
100	18	.005																			27
200	17	.005																			28
9N+300 E	13	.005																			29
																					30
10N+ 00	15	.005																			31
50 E	16	.005																			32
150	21	.005																			33
10N+250 E	22	.005																			34
																					35
11N+ 00	11	.005																			36
100 E	22	.005																			37
200	18	.005																			38
11N+300 E	15	.005																			39
																					40

All reports are the confidential property of clients
 results are in PPM.
 DIGESTION:.....
 DETERMINATION:.....

DATE SAMPLES RECEIVED July 2, 1982
 DATE REPORTS MAILED July 7, 1982
 ASSAYER Dean Toyé
 DEAN TOYE, B.Sc.
 CHIEF CHEMIST
 CERTIFIED B.C. ASSAYER



To: Agio Resources

ACME ANALYTICAL LABORATORIES LTD.

Assaying & Trace Analysis

852 E. Hastings St., Vancouver, B. C. V6A 1R6

phone:253 - 3158

File No. 82-0496

Type of Samples

Disposition

GEOCHEMICAL ASSAY CERTIFICATE

3

SAMPLE No.	Cu	Au								
12N+ 00	15	.005								1
50 E	18	.005								2
150	19	.005								3
12N+250 E	20	.005								4
										5
1N+ 50 W	142	.005								6
2N+ 50 W	60	.005								7
3N+ 50 W	220	.045								8
4N+ 50 W	24	.005								9
										10
5N+ 50 W	15	.025								11
5N+100 W	145	.005								12
6N+ 50 W	27	.005								13
6N+100 W	28	.005								14
6N+150 W	118	.005								15
										16
7N+ 50 W	29	.005								17
100	30	.005								18
7N+150 W	90	.025								19
										20
8N+ 50 W	25	.005								21
100	52	.005								22
8N+150 W	22	.005								23
										24
9N+100 W	56	.005								25
200	40	.005								26
9N+300 W	23	.005								27
										28
10N+ 50 W	35	.005								29
150	102	.005								30
250	18	.005								31
350	28	.005								32
10N+400 W	24	.005								33
										34
11N+100 W	12	.005								35
200	58	.025								36
300	26	.005								37
400	20	.005								38
11N+500 W	22	.005								39
										40

All reports are the confidential property of clients
All results are in PPM.

DIGESTION:.....

DETERMINATION:.....

DATE SAMPLES RECEIVED July 2, 1982

DATE REPORTS MAILED July 7, 1982

ASSAYER Dean Toyé

DEAN TOYE, B.Sc.
CHIEF CHEMIST
CERTIFIED B.C. ASSAYER



To: Agio Resources,

ACME ANALYTICAL LABORATORIES LTD.

Assaying & Trace Analysis

852 E. Hastings St., Vancouver, B. C. V6A 1R6

phone: 253 - 3158

File No. 82-0496

Type of Samples _____

Disposition _____

GEOCHEMICAL ASSAY CERTIFICATE

SAMPLE No.	Cu	Au																			
12N+ 50 W	14	.005																			1
150	13	.005																			2
250	29	.005																			3
350	34	.005																			4
12N+450 W	24	.005																			5
																					6
R-1-W	164	.005																			7
R-2-W	56	.005																			8
R-3-W	38	.005																			9
R-4-W	240	.005																			10
R-5-W	160	.010																			11
																					12
																					13
																					14
																					15
																					16
																					17
																					18
																					19
																					20
																					21
																					22
																					23
																					24
																					25
																					26
																					27
																					28
																					29
																					30
																					31
																					32
																					33
																					34
																					35
																					36
																					37
																					38
																					39
																					40

All reports are the confidential property of clients
 All results are in PPM.
 DIGESTION:.....
 DETERMINATION:.....

DATE SAMPLES RECEIVED July 2, 1982
 DATE REPORTS MAILED July 7, 1982
 ASSAYER Dean Toy
 DEAN TOYE, B.Sc.
 CHIEF CHEMIST
 CERTIFIED B.C. ASSAYER

5+W 4+W 3+W 2W 1W 0+00 1E 2E 3E

+00N

+00N

+00N

+00N

+00N

+00N

12+00N

11+00N

10+00N

9+00N

8+00N

7+00N

6+00N

5+00N

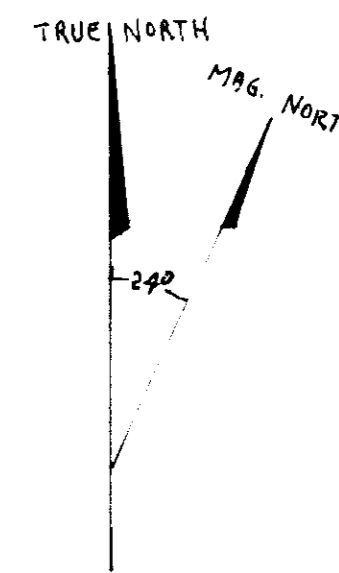
4+00N

3+00N

2+00N

1+00N

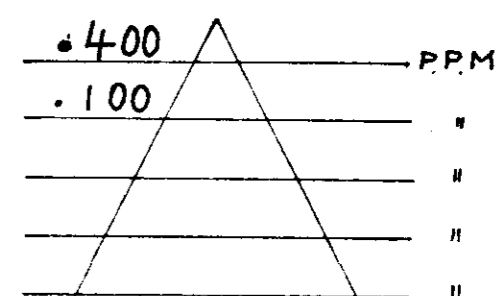
0+00



LEGEND

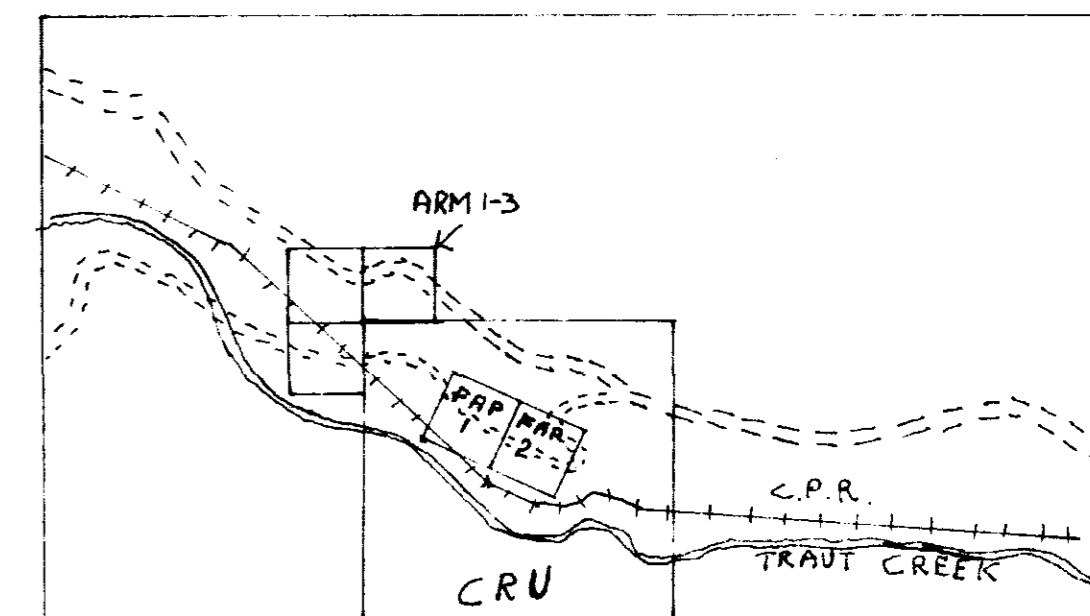
- o Grid station
- Stream
- Good gravel road
- == 4WD road

GOLD

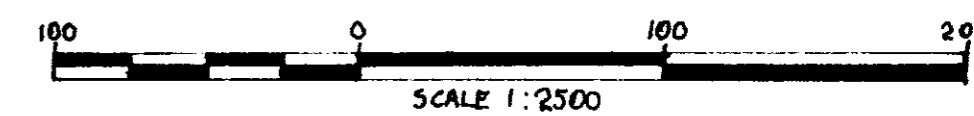


GEOLOGICAL BRANCH ASSESSMENT REPORT

10,718



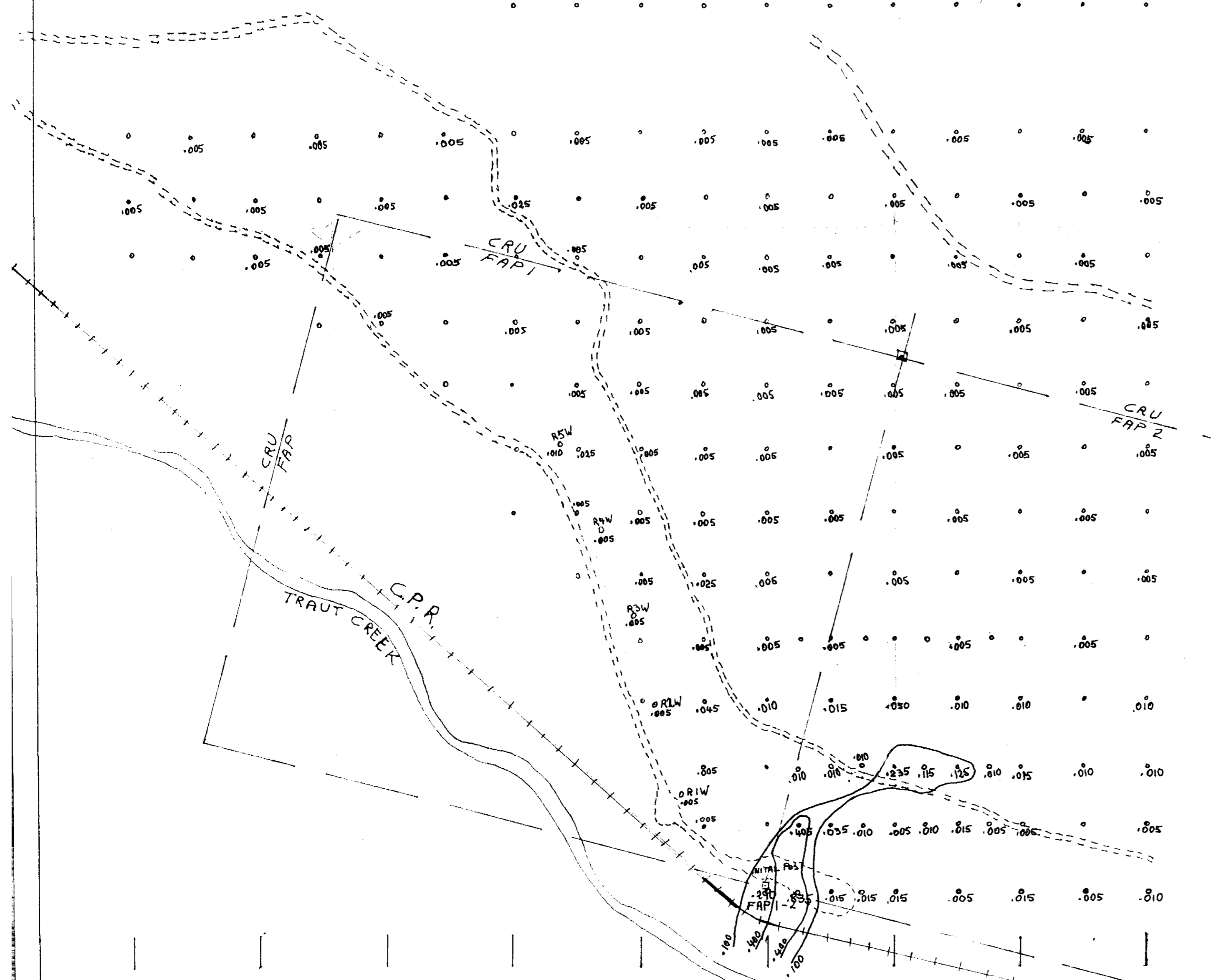
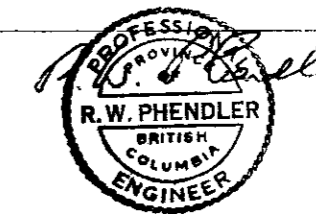
LOCATION MAP
SCALE 1:50,000



AGIO RESOURCES CORPORATION
CRUMP GROUP
050Y005 MINING DIVISION B.C.

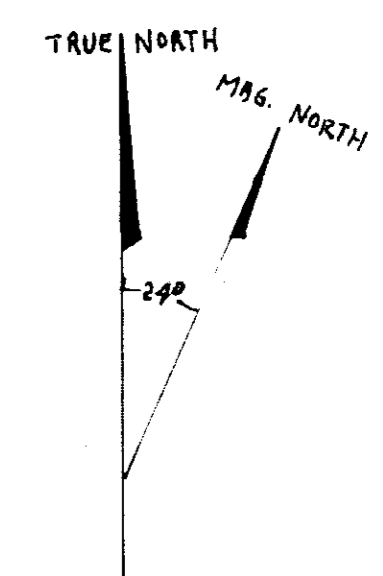
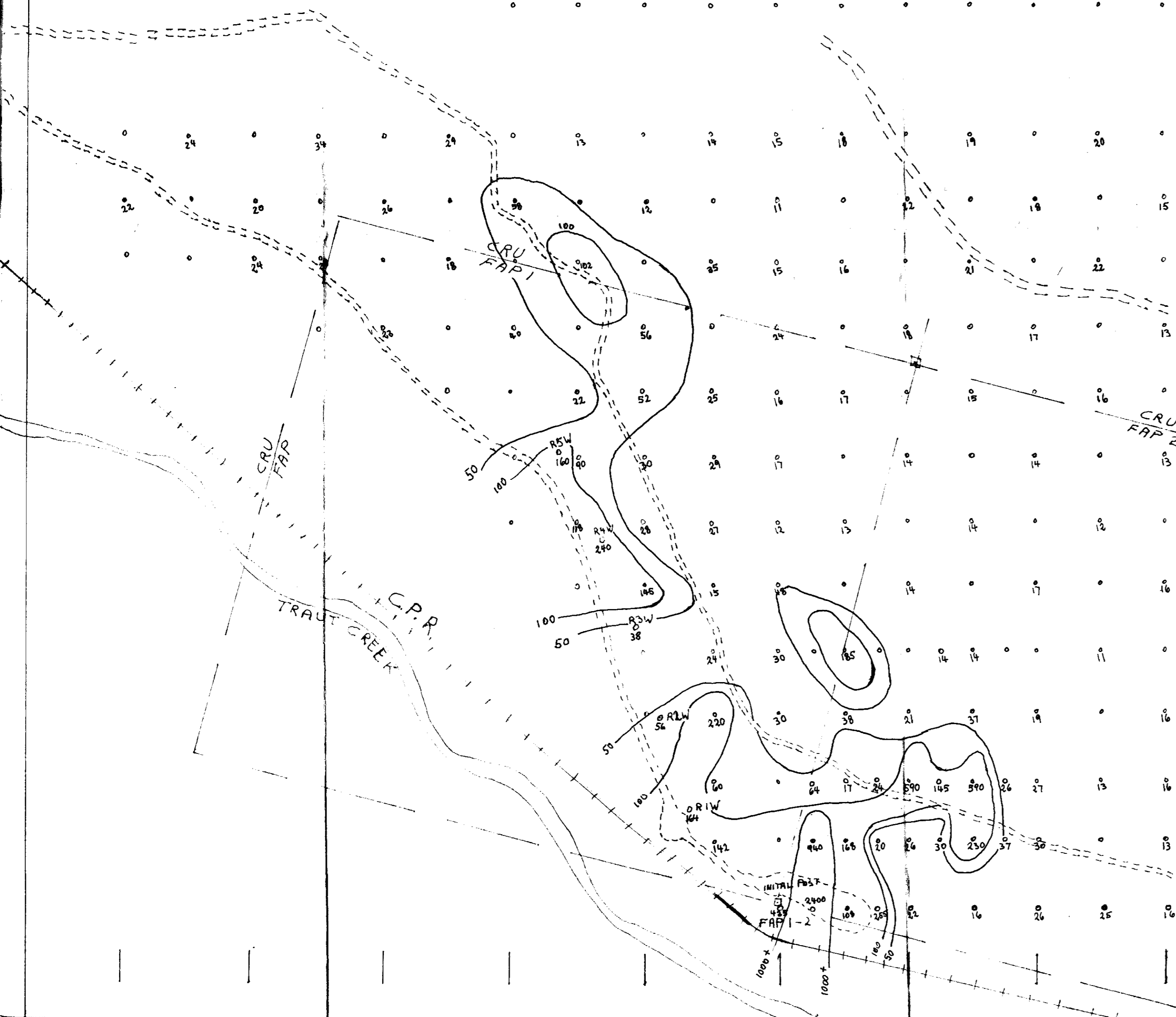
GEOCHEM

GOLD



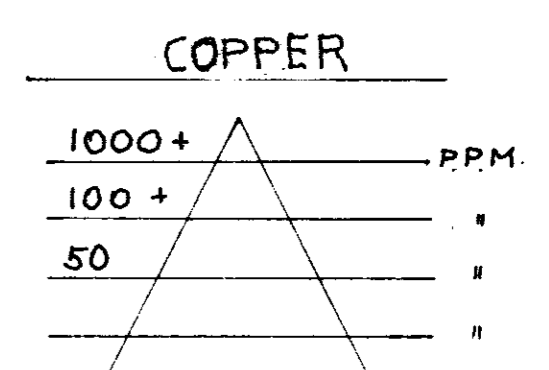
5+W 4+W 3+W 2W 1W 0+00 1E 2E 3E

+00N
 +00N
 +00N
 +00N
 +00N
 +00N
 +00N
 +00N
 +00N
 +00N
 12+00N
 11+00N
 10+00N
 9+00N
 8+00N
 7+00N
 6+00N
 5+00N
 4+00N
 3+00N
 2+00N
 1+00N
 0+00



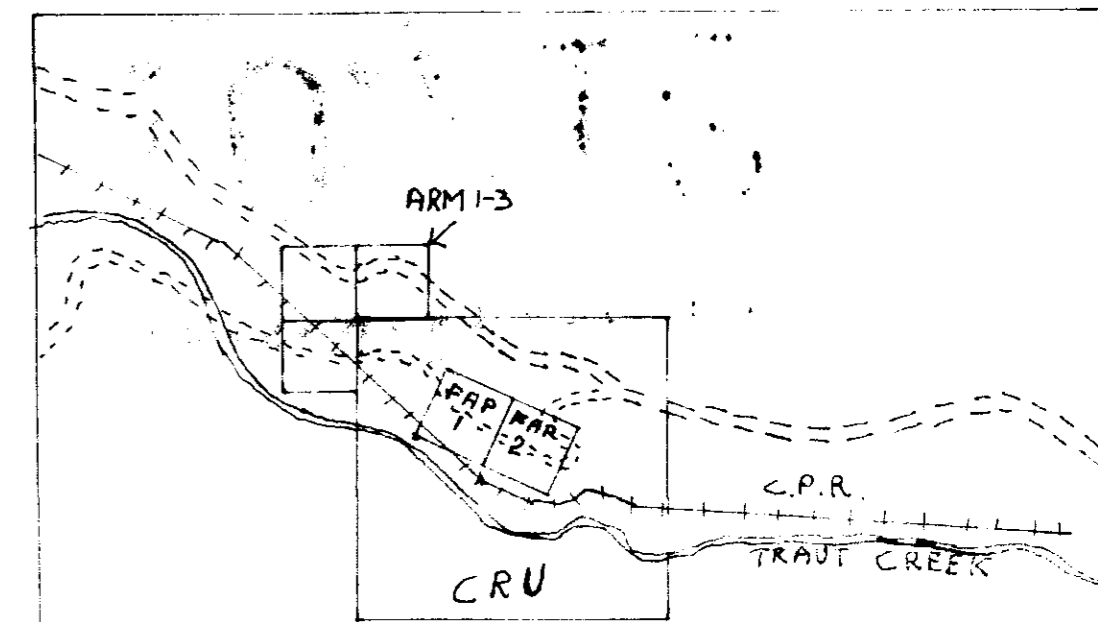
LEGEND

- o Grid station
- Stream
- Good gravel road
- 4WD road

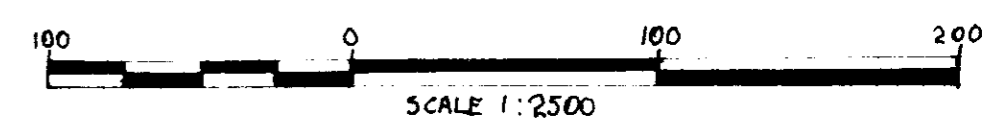


GEOLOGICAL BRANCH
 ASSESSMENT REPORT

10,718



LOCATION MAP
 SCALE 1:50,000



SCALE 1:2500

AGIO RESOURCES CORPORATION
 CRUMP GROUP
 0507005 MINING DIVISION B.C.

GEOCHEM
 COPPER

