

ASSESSMENT REPORT

GEOCHEMICAL REPORT
ON THE
LAWYERS #12 CLAIM GROUP
(Submitted as assessment work
for the Breeze claim)

OMINECA MINING DIVISION

by

SHEILA A. CRAWFORD

LOCATION: 57°20' N Latitude
127°12' W Longitude
N.T.S. 94E/6E

OWNER: SEREM LTD. AND KENNCO EXPLORATIONS LTD.

OPERATOR: SEREM LTD.

DATES WORK PERFORMED: September 1, 1982

DATE OF REPORT: October, 1982

**GEOLOGICAL BRANCH
ASSESSMENT REPORT**

10,728

TABLE OF CONTENTS

	<u>Page</u>
INTRODUCTION	1
GEOCHEMICAL SOIL SAMPLING	5
GEOCHEMICAL ANALYSIS	6
RESULTS AND INTERPRETATION	7
CONCLUSIONS AND RECOMMENDATIONS	8
CERTIFICATE OF QUALIFICATIONS	9
STATEMENT OF EXPENDITURES	10

LIST OF ILLUSTRATIONS

Figure 1. Location Map: Breeze claim	3
Figure 2. Claims Map: Lawyers #12 Claim Group	4
Figure 3. Gold and Silver in Soils, contour soil traverses, Lawyers #12 Group	In Pocket

INTRODUCTION

The Lawyers #12 claim group is located at 57°20' N latitude and 127°12' W longitude in the Toodoggone River map sheet area, N.T.S. 94E/6E, Omineca Mining Division (Figures 1 and 2). Access to the property is by fixed wing from Smithers to the Sturdee Valley airstrip (290 km), and by helicopter to the property (20 km).

The Lawyers #12 claim group is owned by Serem Ltd. and in part by Kennco Explorations Ltd., and is operated by Serem Ltd. The group currently consists of the following claims:

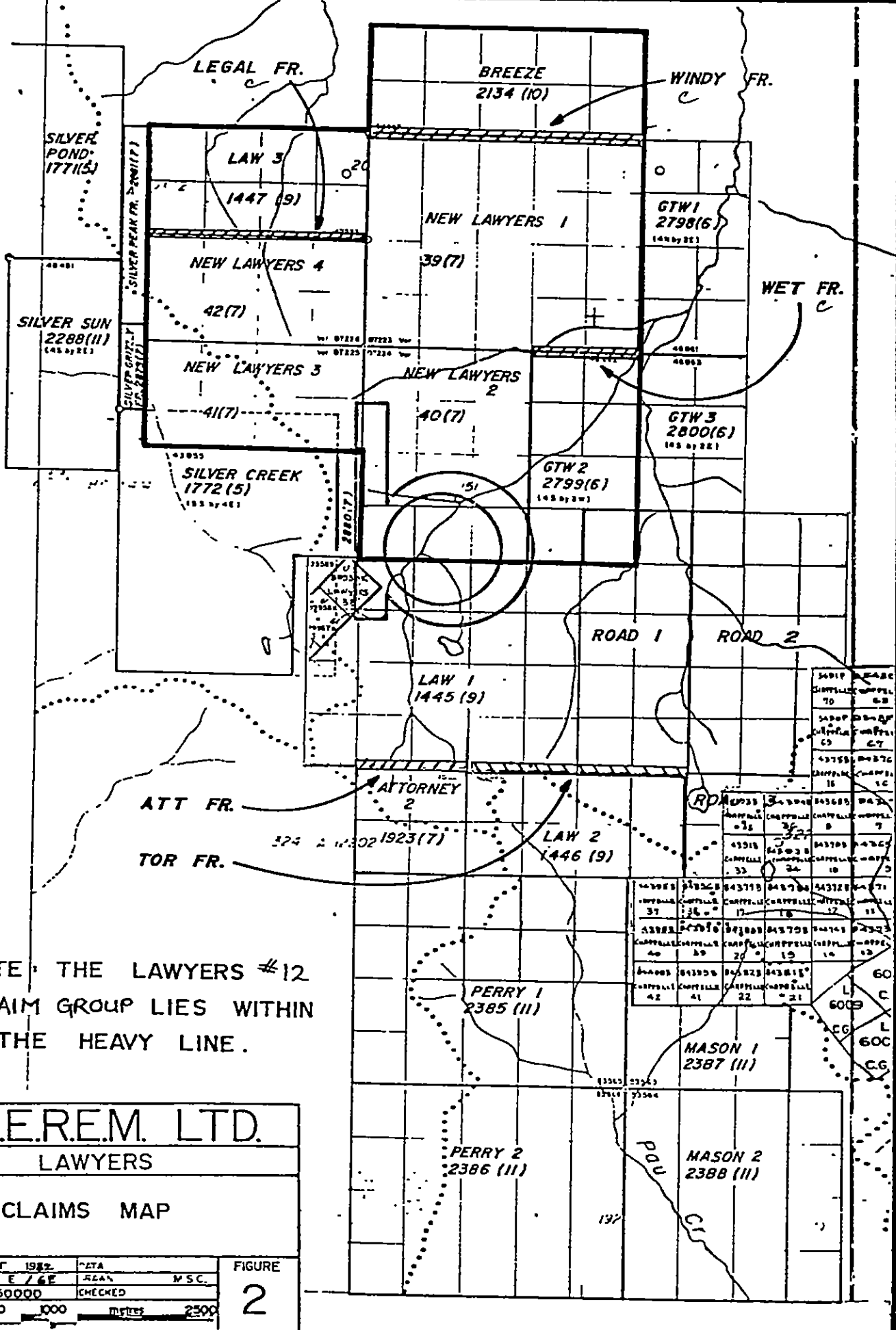
<u>Claim Name</u>	<u>Record No.</u>	<u>No. of Units</u>
New Lawyers 1	39	20
New Lawyers 2	40	12
New Lawyers 3	41	8
New Lawyers 4	42	8
Law 3	1447	8
Breeze	2134	10
GTW 2	2799	<u>8</u>
		74

Previous work carried out by Serem Ltd. consists of extensive diamond drilling, trenching, and underground exploration on the New Lawyers #1 claim (1979-1982), and trenching, geochemical soil and rock sampling on the other claims in the group (1980-1982). Kennco Explorations Ltd. drilled and trenched the New Lawyers claims in 1974 and 1975.

During the 1982 field season, Serem personnel carried out soil sampling along three traverses on the Lawyers #12 claim group. A total of 90 soil samples was analysed for

gold and silver: 70 of these were taken on the New Lawyers 1 claim, 14 on the New Lawyers 4 claim, and 6 on the Law 3 claim. This work is being applied as assessment for the adjoining Breeze claim.

The purpose of the survey was to test for gold-silver breccias similar to the known Amethyst Gold Breccia Zone on the New Lawyers #1 claim. This area has not previously been sampled.



34017	34018	34019	34020	34021
34022	34023	34024	34025	34026
34027	34028	34029	34030	34031
34032	34033	34034	34035	34036
34037	34038	34039	34040	34041
34042	34043	34044	34045	34046
34047	34048	34049	34050	34051
34052	34053	34054	34055	34056
34057	34058	34059	34060	34061
34062	34063	34064	34065	34066
34067	34068	34069	34070	34071
34072	34073	34074	34075	34076
34077	34078	34079	34080	34081
34082	34083	34084	34085	34086
34087	34088	34089	34090	34091
34092	34093	34094	34095	34096
34097	34098	34099	34100	34101

NOTE: THE LAWYERS #12 CLAIM GROUP LIES WITHIN THE HEAVY LINE.

S.E.R.E.M. LTD.

PROJECT: **LAWYERS**

TITLE: **CLAIMS MAP**

DATE: OCT 1982	BY: ATA	FIGURE: 2
SCALE: 1:50000	CHECKED: MSC	

0 500 1000 2500 METERS

GEOCHEMICAL SOIL SAMPLING

Soil samples were collected along three traverses - one at 1700 m elevation (above sea level) on the north slope, one on the ridge line and one at 1790 m elevation on the south slope. Sample sites are approximately 50 metres apart, measured with Topofil hip-chain. Each site is identified by surveyor's flagging with the sample number written on it. Soil was placed in brown paper bags and characteristics such as colour, grain size, horizon and depth of sampling were noted. Localities were plotted on a 1:10,000-scale topographic map. The area sampled is entirely above treeline and the soil is an alpine type developed on felsenmeer, talus on the steeper portions and minor amounts of glacial till. Most samples are from the C horizon, since the B horizon is rare to absent.

GEOCHEMICAL ANALYSIS

All samples were sent for analysis to Min-En Laboratories in North Vancouver. The following is a brief description of the analytical procedure:

The samples are dried at 95° C. Soil samples are screened by 80 mesh sieve to obtain the minus 80 mesh fraction for analysis.

For gold, a suitable sample, weight 5 or 10 grams, is pretreated with HNO₃ and HClO₄ mixture.

After pretreatment, the samples are digested with Aqua Regia solution, and after digestion the samples are taken up with 25% HCl to suitable volume.

Sample solutions are prepared with Methyl Iso-Butyl Ketone for the extraction of gold.

With a set of suitable standard solutions, gold is analysed by Atomic Absorption instruments. The obtained detection limit is 5 ppb.

For silver, samples weighing 1.0 gram are digested for 6 hours with HNO₃ and HClO₄ mixture.

After cooling, the samples are diluted to standard volume. The solutions are analysed by Atomic Absorption Spectrophotometers using the CH₂H₂-Air Flame combination.

RESULTS AND INTERPRETATION

Analytical results are plotted on Figure 3. Threshold silver and gold values are underlined with a light line and anomalous values with a heavy line. Note the anomalous values of soils taken on the Amethyst Gold Breccia Zone. Most analyses are in the background range except for a few, scattered threshold values. Three samples (MC-15, MC-26 and MC-27) outside of the Amethyst Gold Breccia Zone are anomalous and should be followed up with prospecting. These occur on the north slope. It was hoped that the approximately parallel traverses might cut across a mineralized zone and indicate the strike. There is one such possibility, shown on the map as a dashed line. However, these values are only weakly anomalous.

CONCLUSIONS AND RECOMMENDATIONS

Analyses of ninety soil samples taken on three traverses indicate two new anomalous areas. These areas should be soil sampled on a grid basis at 25-metre intervals. Prospecting should be carried out with an emphasis on quartz-veined or silicified rock, and followed up by trenching if significant results are obtained.

CERTIFICATE OF QUALIFICATIONS

I, SHEILA A. CRAWFORD, certify that:

1. I am a geologist, employed by Serem Ltd.
2. I have an Honours Bachelor of Science Degree (First Class) in Geology from Carleton University in Ottawa, Ontario.
3. I have worked in mineral exploration or geological mapping since 1976 and have acted in responsible positions since 1979.
4. I personally examined the property and directed the geochemical survey.
5. I have no financial interest, either direct or indirect, in the property.



Sheila A. Crawford,
Geologist.

Vancouver, B.C.
October 1982.

STATEMENT OF EXPENDITURESAnalyses

90 soil samples analysed for Au, Ag @ \$7.85	\$706.50	
Sample shipment from Smithers to North Vancouver laboratory 90 @ \$.30	<u>27.00</u>	\$ 733.50

Wages

Geochemical soil sampling, Sept. 1, 1982:
P. Newman, E. DeBock, M. Cullen

1 day @ \$102	\$102.00	
1 day @ \$102	102.00	
1 day @ \$ 58	58.00	

Supervision:

S. Crawford

½ day @ \$120	60.00	
---------------	-------	--

Report writing, map preparation, and drafting:

S. Crawford

2 days @ \$120	<u>240.00</u>	
----------------	---------------	--

\$ 562.00

Board, Lodging and Field Expenses

3½ man-days @ \$52/day		\$ 182.00
------------------------	--	-----------

Transportation

4-wheel drive truck 1 day @ \$50/day,
including gas

\$ 50.00

Materials

Drafting and report writing materials

\$ 25.00

Total

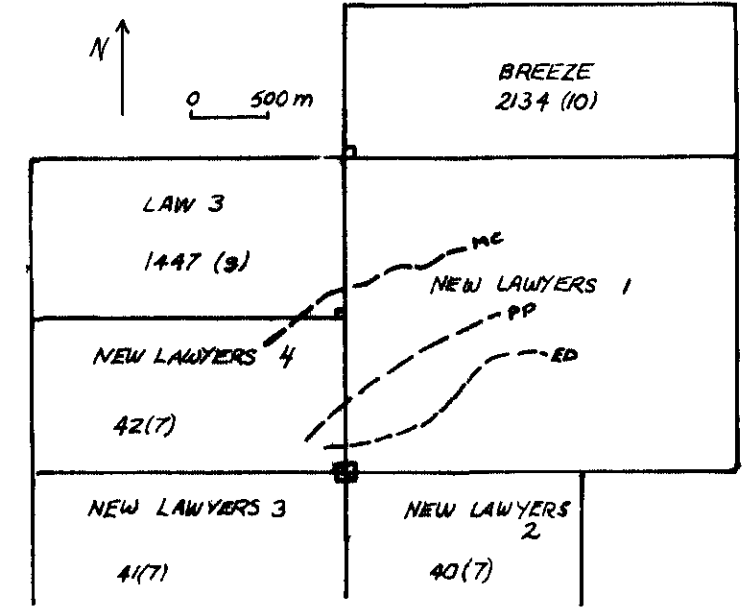
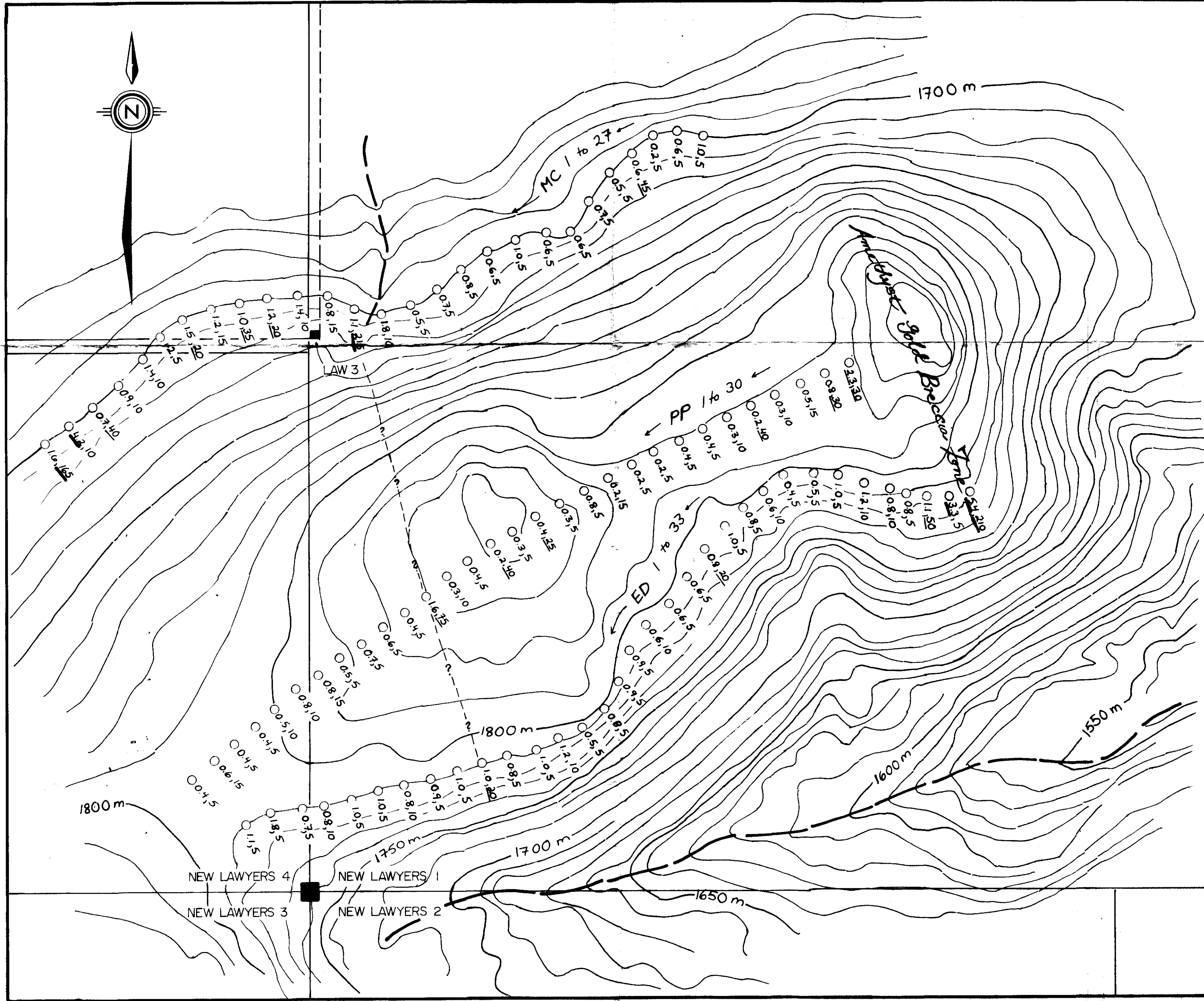
\$ 1,552.50

10,728

LEGEND

- 0.5,5 soil sample site, ppm Ag, ppb Au
- 2.8 2.0 - 2.9 ppm Ag, 20 - 95 ppb Au
- 5.3 3.0 ppm Ag, 100 ppb Au

- PP 1 traverse number
- topographic contour, as.l.
10 m intervals
- stream
- claim line
- legal corner post



SEREM LTD.

PROJECT
LAWYERS

TITLE
**GOLD AND SILVER IN SOILS
CONTOUR SOIL TRAVERSES
LAWYERS *12 CLAIM GROUP**

DATE : OCT 1982 DATA ; S.CRAWFORD

N.T.S. : 94 E / 6E DRAWN : S.C.

SCALE ; 1:5000 CHECKED : *SC*



FIGURE

3