

GEOPHYSICAL WORK

MOE 2, MOE 3, MOE 4, MOE 5, MOE 15, State of Montana,

Whitehorse, Evening, Bangor, Black Hawk,

New Brunswick, Iceland, Nova Scotia, Crackerjack

Comet, Edan

Atlin M.D.
NTS 114P/10E
Lat: 59° 34'N
Long: 136° 32'W

Owner: Falconbridge Limited
Operator: Falconbridge Limited

**GEOLOGICAL BRANCH
ASSESSMENT REPORT**

10,847

part 1
of 24

John Wilson
Submitted: October 8, 1982

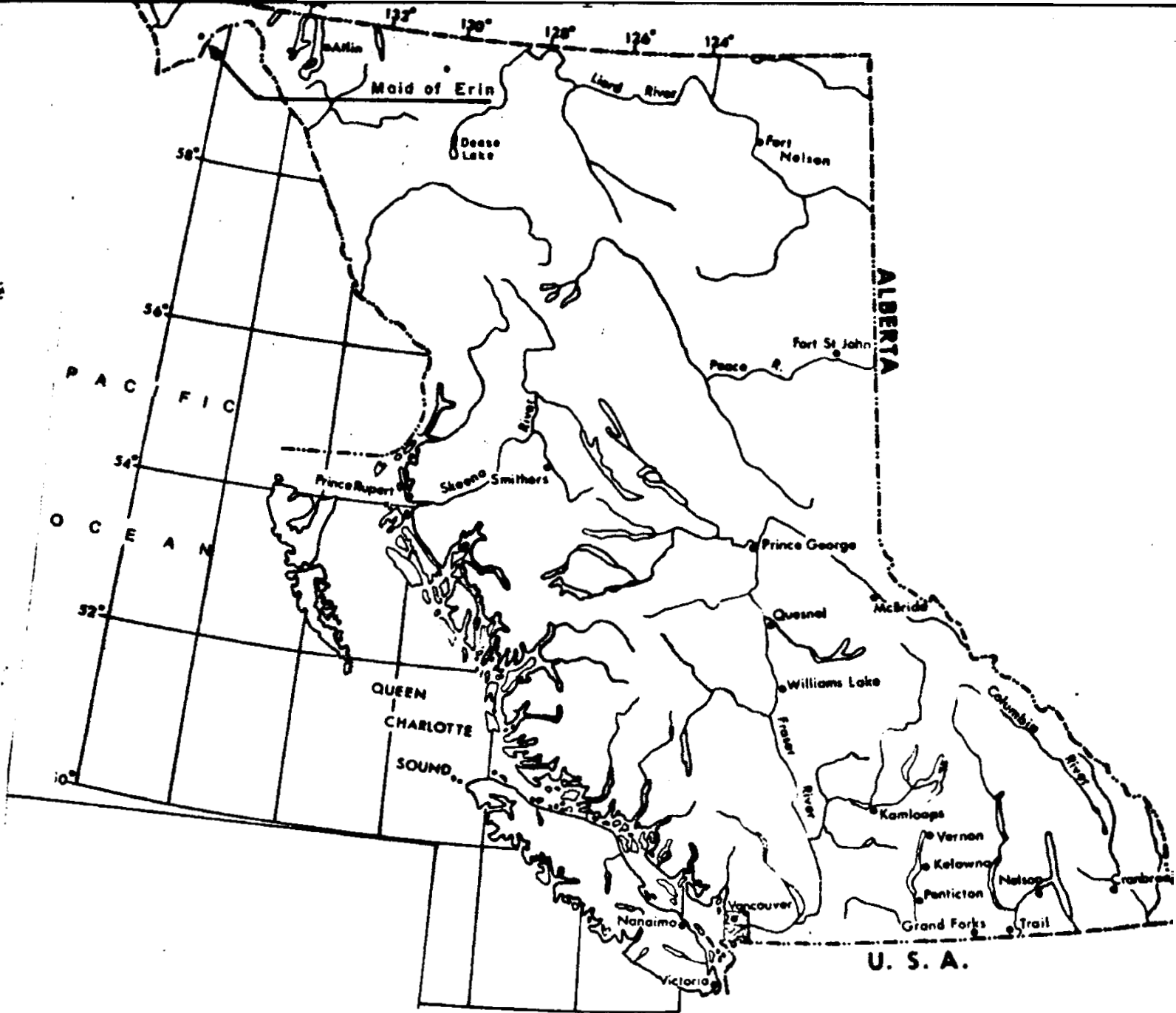
John R Wilson

TABLE OF CONTENTS

| | <u>PAGE</u> |
|-----------------------------------|-------------|
| INTRODUCTION | 4 |
| GEOPHYSICAL WORK | 5 |
| STATEMENT OF COSTS | 6 |
| STATEMENT OF QUALIFICATIONS | 7 |

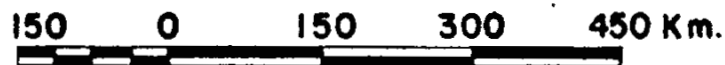
FIGURES

| | |
|--|-------------------|
| INDEX MAP OF BRITISH COLUMBIA | 1 |
| CLAIMS MAP 015-82-1 | 2 |
| EAST GRID LOCATION 015-82-2 | 3 |
| VLF ELECTROMAGNETIC PERSPECTIVE MAP VIEW NW 015-82-10 | in pocket at back |
| VLF ELECTROMAGNETIC PERSPECTIVE MAP VIEW SE 015-82-11 | in pocket at back |

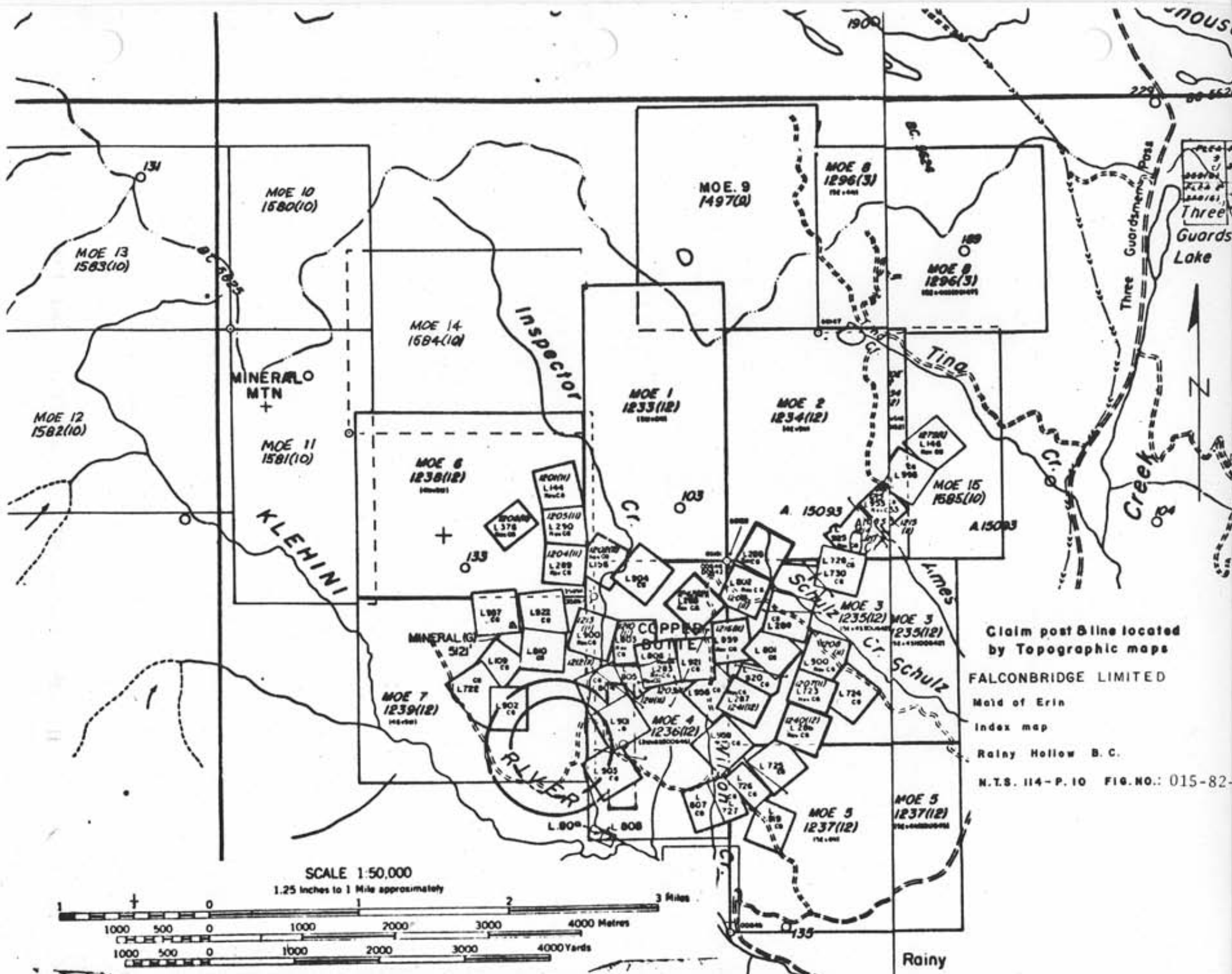


INDEX MAP

BRITISH COLUMBIA



SCALE 1: 7 500 000



MINERAL MTN
+

INSPECTOR

Ting

Creek

KLEHINI

COPPER BUTTE

Schulz

RAINIER

Claim post & line located by Topographic maps

FALCONBRIDGE LIMITED

Maid of Erin

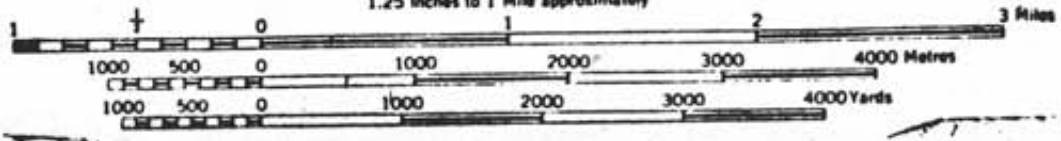
Index map

Rainy Hollow B.C.

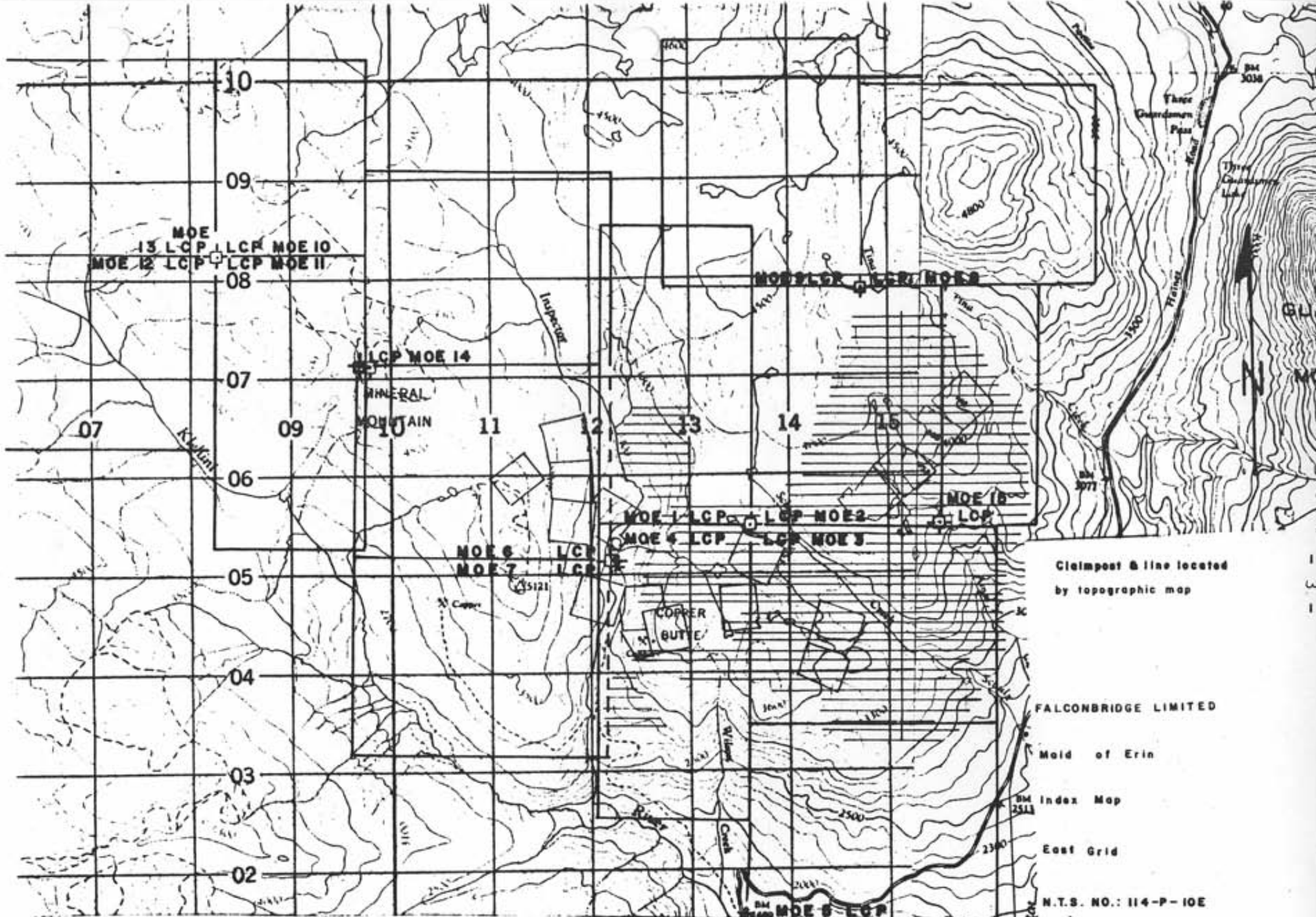
M.T.S. 114-P. 10 FIG. NO.: 015-82

SCALE 1:50,000

1.25 inches to 1 Mile approximately



Rainy



Claimpost & line located by topographic map

FALCONBRIDGE LIMITED

Maid of Erin

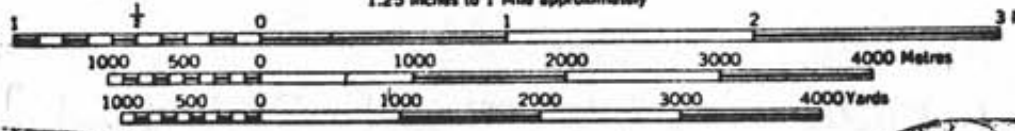
Index Map

East Grid

N.T.S. NO.: 114-P-10E

FIG. NO.: 015-82-2

SCALE 1:50,000
1.25 inches to 1 Mile approximately



INTRODUCTION

MOE 2 (20 units), MOE 3 (20 units), MOE 4 (18 units) and MOE 5 (20 units) were staked in 1980. Reverted, crown granted two-post claims also applied for in 1980 were State of Montana, Whitehorse, Evening, Bangor, Black Hawk, New Brunswick, Iceland, Nova Scotia, Crackerjack, Comet, and Edan. MOE 15 (10 units) was staked in 1981. The above claims are now classified as the MOE 6 Group. The current owner and operator is Falconbridge Limited.

The claims are in the Coast Mountains about 13 kilometres northwest from Pleasant Camp on the Alaska-B.C. border. The Haines - Haines Junction Highway passes through the property and old mining exploration roads provide further access.

The claims contain several crown granted mineral claims that had been worked intermittently since about 1900. The deposits are lenses of massive and disseminated sulphides in skarns. Main ore minerals are sphalerite, galena, and chalcopyrite. Pyrrhotite and pyrite are common.

The deposits are within a roof pendant composed of argillites, quartzites, limestones and gneisses. It is surrounded by Jurassic(?) quartz diorites and granodiorites according to K. DeP. Watson (BCDM Bull, 25, 1948). Dykes and sills of gabbro and feldspar porphyry also intrude the sediments.

Geophysical and geochemical work in this "east grid" area was conducted by Falconbridge Nickel Mines Limited in 1981. Results encourage economic hopes for the area despite the small dimensions of known mineralized bodies. Work included VLF EM survey using an EM 16 tuned to Hawaii. Readings were taken every 25 metres on lines spaced 100 metres apart.

The present work report covers all the above claims plus a small portion of MOE 1.

GEOPHYSICAL WORK (figs. 015-82-10&11)

VLF EM data from 1981 was Fraser Filtered and submitted to H.A. Simons (International) Ltd. in April 1982 for production of a perspective map.

Two views of the "east grid" were produced (figures 015-82-10 and 11). Both maps clearly show numerous conductors trending northeasterly. This conforms with the strike of layered rocks, most of the known skarn occurrences, and much of the roof pendant - intrusive contact in this region.

Suggestions of intersecting conductors can be seen at a few sites (eg. near the L.C.P. for MOE 1,2,3,4) but a survey would have to be run perpendicular to the present one to reliably comment on this.

Conductor strength is represented by the vertical scale. Erratic single point highs are distributed throughout much of the area but seem more common toward the north end of MOE 2.



FALCONBRIDGE NICKEL MINES LIMITED

6415 - 64th Street, Delta, B.C., Canada V4K 3N3

Tel. (604) 946-0441

Telex 04-53245

ADDENDUM TO ASSESSMENT REPORT submitted October 8th 1982
entitled "Geophysical Work Moe 2, Moe 3, Moe 4, Moe 15,
State of Montana....." Atlin M.D. NTS 114P/10E

A total of 97.6 Km of grid was surveyed by Ronka E.M.
16^S, serial No's: 2, 17 and 20.
Figures 015 - 81 - 15 and 16 show the raw profiled data.

Additional Figures

015-81-15 EM16 profile, East Grid, North half

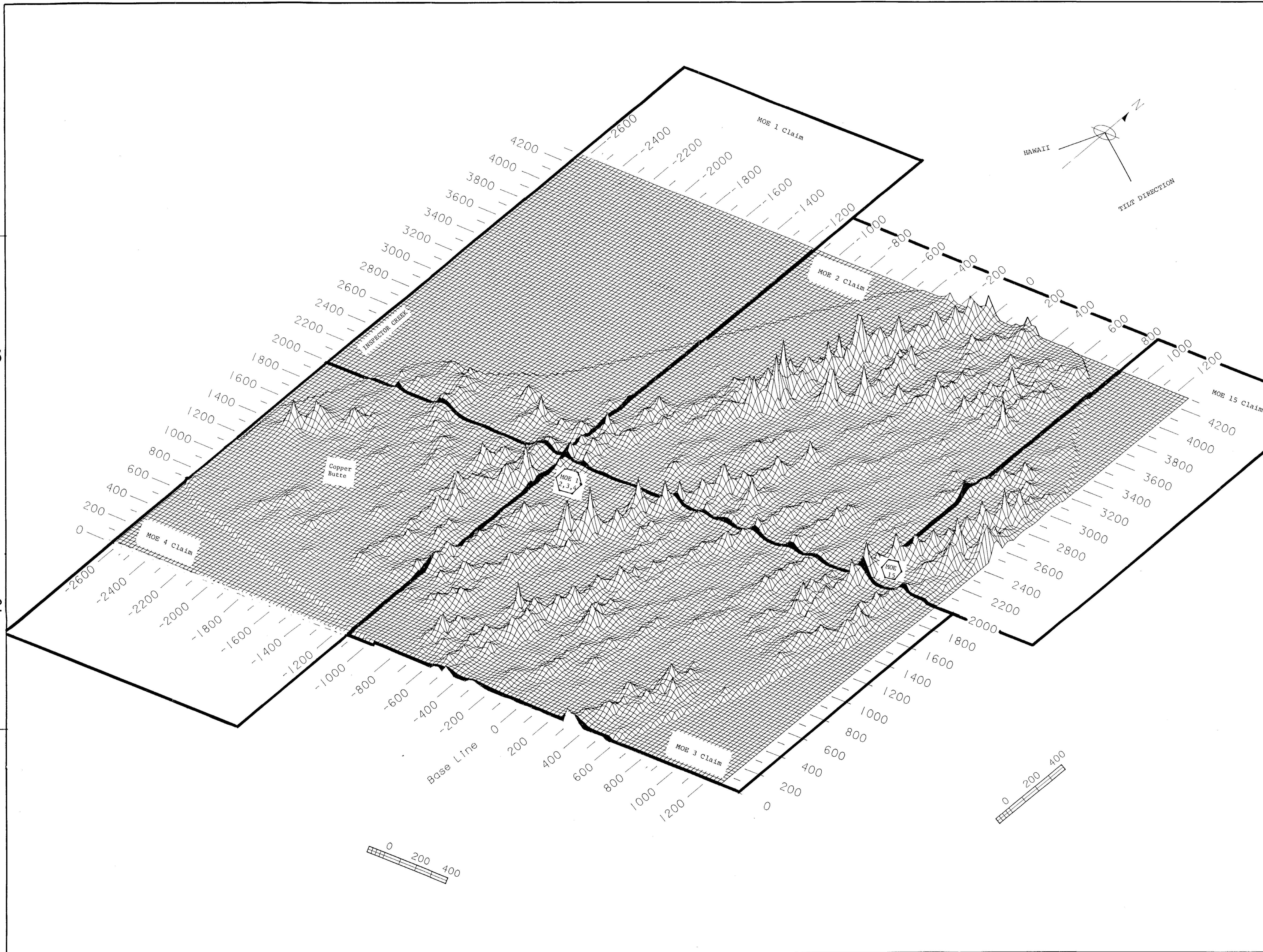
015-81-16 EM16 profile, East Grid South half

STATEMENT OF COSTS

| | | |
|----|--|--------------------------|
| 1. | H.A. Simons (International) Ltd. (April 21/82) creating a block diagram from Fraser Filtered VLF EM data | \$ 1400.00 |
| 2. | Labelling grid and framing | <u>140.00</u> |
| | sub-total | \$ 1540.00 |
| 3. | Report Writing, typing and map copies | <u>80.00</u> |
| | TOTAL | \$ <u><u>1620.00</u></u> |

STATEMENT OF QUALIFICATIONS

John R. Wilson graduated from the University of British Columbia in 1972 with a B.Sc. (honours) in Geology. He has worked for the Falconbridge Nickel Mines Limited group of companies and Falconbridge Limited since graduation as a Minerals Exploration Geologist.



LEGEND

L.C.P. MOE 15

Claim posts and claim lines located by mapped grid position.

Instrument: EM 16
Station: Hawaii (23.4)
Tilt Direction: 120°

SCALE
Approximately 1:10,000

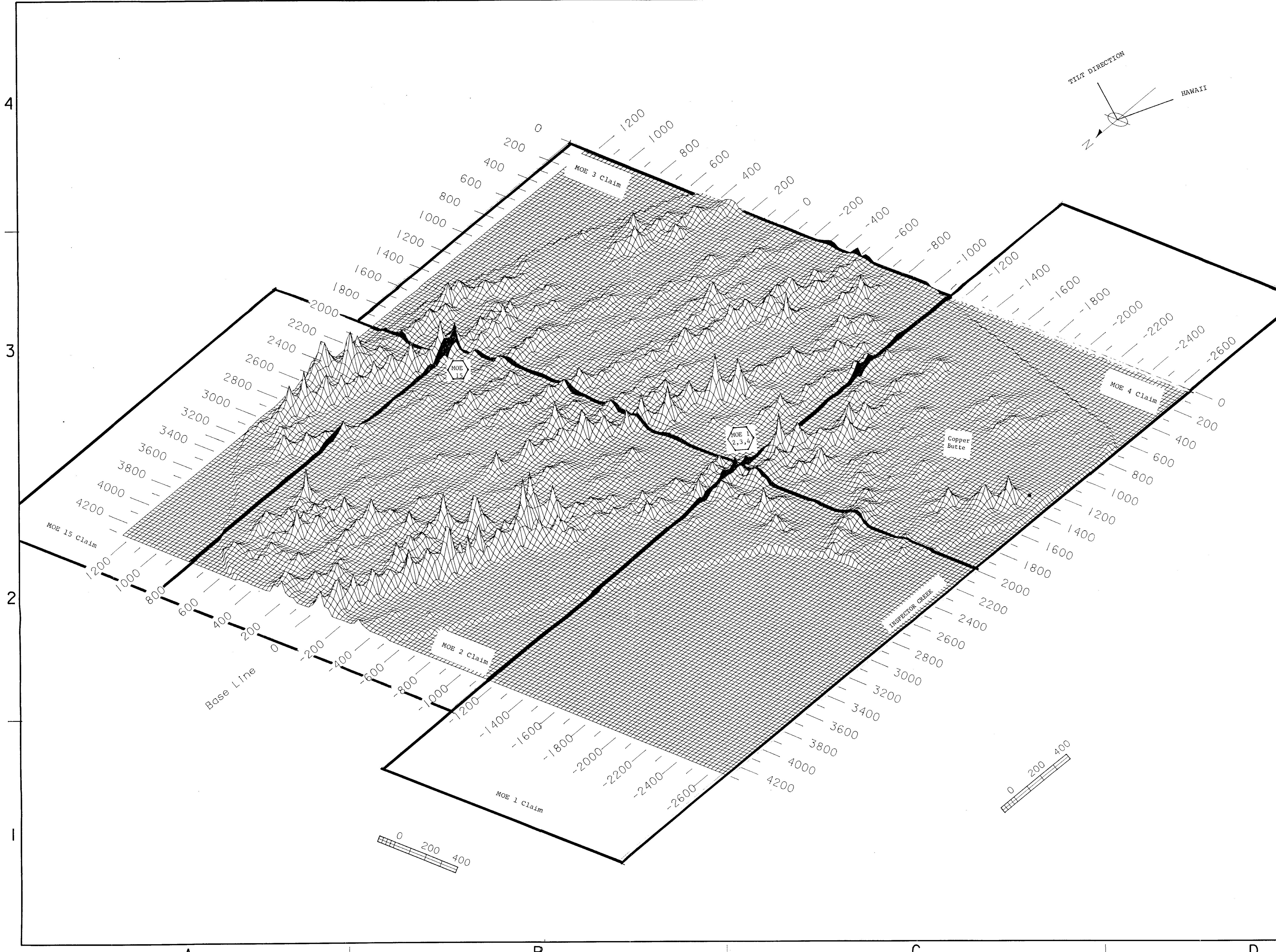
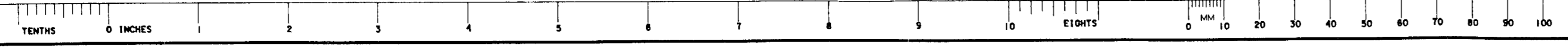
GEOLOGICAL BRANCH ASSESSMENT REPORT

10,847
part 1 of 4

Note: Two times magnification on verticle scale.

| | |
|--|----------------------------|
| FALCONBRIDGE LIMITED | |
| PROPERTY: | PROJECT No. |
| Maid of Erin | 015 |
| LOCATION: | |
| RAINY HOLLOW, B.C. | |
| TYPE OF MAP: | |
| FRASER FILTER VLF EM - PERSPECTIVE MAP | |
| WORKING PLACE: East Grid | |
| BASED ON: | |
| DATE OF WORK: | MAP REF. NO.: |
| DRAWN BY: S. L. NOEL | N. T. S. NO.: |
| DATE: May 1982 | 114-P-9E 10W |
| CLIENT DRAWING NO. | CAD INTERGRAPH |
| | Q53 (207, 40) AAERIN3D.DGN |

H. A. SIMONS (INTERNATIONAL) LTD.
MINING & MINERAL PROCESSING DIV.
FIG. 015-82-10



LEGEND

MOE 15 L.C.P. MOE 15

Claim posts and claim lines located by mapped grid position.

Instrument: EM 16
 Station: Hawaii (23.4)
 Tilt Direction: 120°

SCALE
 Approximately 1:10,000
GEOLOGICAL BRANCH
ASSESSMENT REPORT

10,847
 part 1 of 4

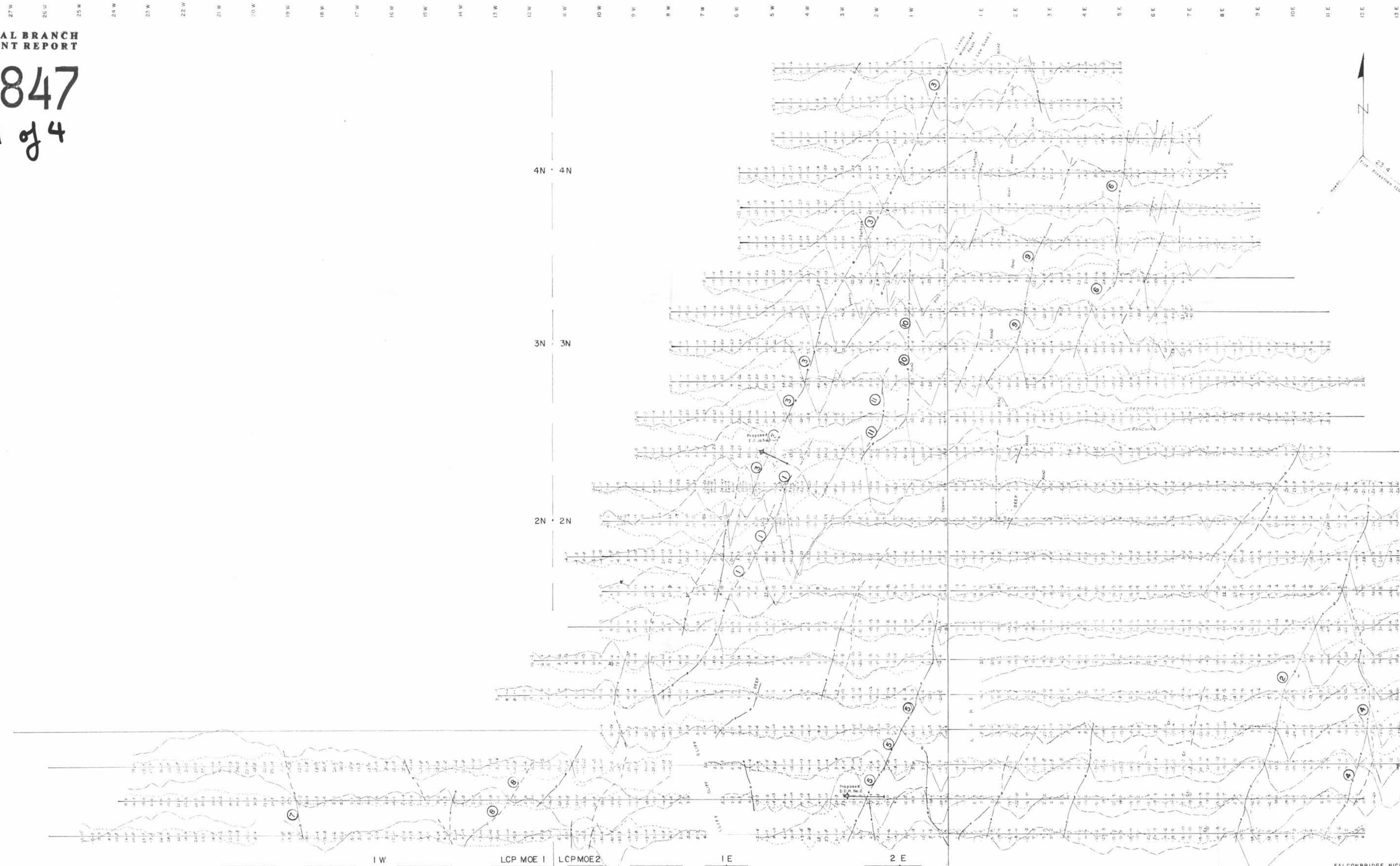
Note: Two times magnification on verticle scale.

| | |
|--------------------------------------|-------------------------|
| FALCONBRIDGE LIMITED | |
| PROPERTY: | PROJECT No. |
| Mald of Erin | 015 |
| LOCATION: | |
| RAINY HOLLOW, B.C. | |
| TYPE OF MAP: | |
| FRASER FILTER VLF EM PERSPECTIVE MAP | |
| WORKING PLACE | East Grid |
| BASED ON: | |
| DATE OF WORK: | MAP REF. NO.: |
| DRAWN BY: S.L.NOEL | N. T. S. NO.: |
| DATE: May 1982 | 114-P-9E 10W |
| CLIENT DRAWING NO. | CAD INTERGRAPH |
| | 0531207, 401AERIN3D.DGN |

H. A. SIMONS (INTERNATIONAL) LTD.
 MINING & MINERAL PROCESSING DIV.
 FIG. 015-92-11

GEOLOGICAL BRANCH
ASSESSMENT REPORT

10,847
part 1 of 4



LEGEND

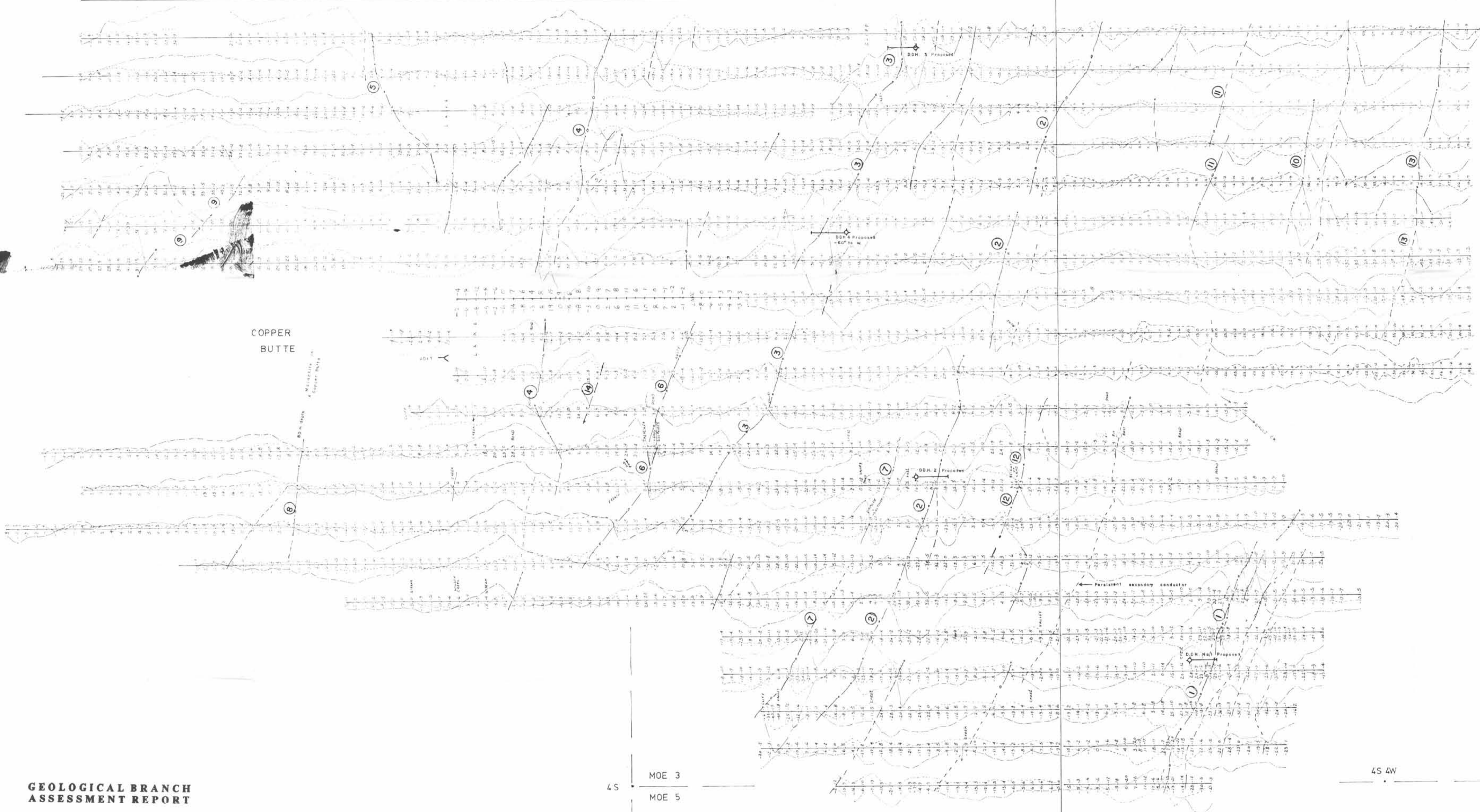
- Electromagnetic Survey
- Inst. Hunko E.M. 16 Serial No. 2, 20 and 17
- V.L.F. St. 23-4 Howell Tilt/direction 120°
- Topographic Profile ————
- Quadrature Profile ————
- Conductors ————
- Secondary Conductors ————



FALCONBRIDGE NICKEL MINES LTD
PROPERTY: Maid of Erie
LOCATION: Reiny Hollow B.C.
TYPE OF MAP: E.M. 16 Profile Station 23-4
BASED ON: Fieldwork by S.P.
DATE OF WORK: Aug. 1981
WORKING PLACE: East Grid North 50
DRAWN BY: S.P. Sept. 1981
N.T.S. NO.: 114-P-10E FIG. NO.: 015-81-15

27 W 26 W 25 W 24 W 23 W 22 21 W 20 W 19 W 18 W 17 W 16 W 15 W 14 W 13 W 12 W 11 W 10 W 9 W 8 W 7 W 6 W 5 W 4 W 3 W 2 W 1 W B L 1 E 2 E 3 E 4 E 5 E 6 E 7 E 8 E 9 E 10 E 11 E

MOE 15 1E
5E
L 20 N
L 19 N
L 18 N
L 17 N
L 16 N
L 15 N
L 14 N
L 13 N
L 12 N
L 11 N
2S 5W
L 10 N
L 9 N
L 8 N
L 7 N
L 6 N
L 5 N
L 4 N
L 3 N
L 2 N
L 1 N
L 0
4S 4W 4S 5W



GEOLOGICAL BRANCH
ASSESSMENT REPORT

10,847
Part 1 of 4

MOE 3
MOE 5
MOE 4
3N
5S

LEGEND
Electromagnetic Survey
Inst. Ranko E.M. 16 Serial No 2 and 20
V.L.F. 50, 23.4 (upwell) Till Direction 120°
Inphase Profile ———
Quadrature Profile - - - - -
Conductors 0 0 0 0 0 0 0
Secondary Conductors ———
100 0 100 200m
SCALE: 1:5 000

FALCONBRIDGE NICKEL MINES LTD
PROPERTY: Mine of Erin
LOCATION: Relay Hollow B.C.
TYPE OF MAP: E.M. 16 Profile Station 23.4
BASED ON: Fieldwork by S.P.
WORKING PLACE: East 514 South 52
DATE OF WORK: Sept. 1981
DRAWN BY: S.P.
N.T.S. NO: H4-P-10E FIG. NO: 015-81-16