

ASSESSMENT REPORT

TYPE: GEOPHYSICAL, GEOCHEMICAL  
AND DIAMOND DRILLING  
CLAIMS: CC-4 to CC-8 inc.  
MINING DIVISION: KAMLOOPS  
NTS LOCATION: 92P/8E  
LATITUDE: 51°25'  
LONGITUDE: 120°02'  
OWNER: CRAIGMONT MINES LIMITED  
OPERATOR: " " "  
AUTHOR: N.B. VOLLO, P.ENG.  
DATE: SEPTEMBER 21st, 1982

**GEOLOGICAL BRANCH  
ASSESSMENT REPORT**

**10,957**

TABLE OF CONTENTS

SUMMARY	1
GENERAL	1
CLAIMS	1
HISTORY AND PREVIOUS WORK	1
GEOLOGY	1
VLF EM SURVEY	1
MAGNETIC SURVEY	2
GEOCHEMICAL SURVEY	2
DIAMOND DRILLING	2
CONCLUSIONS AND RECOMMEND- ATIONS	2
STATEMENT OF EXPENDITURES	3
QUALIFICATIONS OF PROJECT OPERATORS	4
DIAMOND DRILL LOGS	5

IN POCKET

GEOLOGICAL MAP (DRILLSITES)	----92P/8CC-20
EM-16 SURVEY	-----92P/8CC-21
MAGNETIC SURVEY	-----92P/8CC-22
GEOCHEMICAL SURVEY, Cu Ag	-----92P/8CC-23
GEOCHEMICAL SURVEY, Pb Zn	-----92P/8CC-24

### SUMMARY

Approximately 35 km of grid was blazed and chained, VLF-EM and magnetic surveys completed, 516 soil samples collected, and 4 AQ holes, totalling 230 m, drilled on the CC-4 to CC-8 claims, located about 20 km northeast of Barriere. Several EM conductors were delineated and one, with associated magnetic and erratic geochemical response was tested by drilling, with negative results.

### GENERAL

The CC group is located on a subalpine plateau between Chu Chua and Green Mountains, with elevation ranging from 1500 to 2000 m above sea level, and is accessible from the Birk Creek logging road by four wheel drive vehicles.

### CLAIMS

The CC group consists of 11 claims, totalling 190 units, but the present report covers work on the CC-4 to 8 claims only, record nos. 1423(10), 1455-57(10) and 1424(10), all in the Kamloops M.D. and held by Craigmont Mines Limited.

### HISTORY AND PREVIOUS WORK

A massive sulfide deposit was discovered on the CC-1 claim to the southwest in 1978 and subsequent drilling outlined a deposit containing about 2,000,000 t grading 2% copper (A.R.s N.B. Vollo, Jan. 22/79, Oct. 4/79, Oct. 20/81, Sept. 27/82, Oct. 20/82; W.J. McMillan, B.C. Min. Energy, Mines and Pet. Res., Paper 1980-1). The present claims were covered by a Dighem Airborne Survey in 1979 (A.R., D.C. Fraser, Z. Dvorak, July 23/79).

### GEOLOGY

The property is underlain by basalts and tuffites of the Fennell formation, forming the east limb of the Fennell syncline, whose axis is through Mt. Fennell, about 6 km west. The volcanics are truncated to the northeast by the Baldy Batholith.

### VLF EM SURVEY

Readings were taken at 25m intervals along lines 200m apart, using a Ronka EM-16 unit and NPG, Jim Creek, Washington, as transmitter. Readings, in %, were reduced by the Fraser method and are shown contoured on the accompanying map (in Pocket). Numerous conductors were defined, most of which correlate closely with tuffite beds.

### MAGNETIC SURVEY

Readings were taken at 25m intervals along lines 200m apart using a Geometrics G-836 Total Field magnetometer and are shown as field readings minus 57,000 gammas on the accompanying map (in pocket). Correction for diurnal variation, where necessary, was done by looping traverses and correcting back to substations along base lines.

A strong magnetic feature correlates closely with an EM conductor along Baseline 11,000E. Magnetic linears near Baseline 12,000E flank EM conductors and appear to be due to basalt of above average magnetic content.

### GEOCHEMICAL SURVEY

516 soil samples were collected at 50 m intervals along selected lines and at 25 m intervals over EM conductors. They were taken from the "B" horizon using pulaskis, placed in kraft paper envelopes and sent to Kamloops Research & Assay Laboratories. They were there dried, screened, and the -80 mesh fraction analyzed for Cu, Zn, Pb and Ag using hot aqua regia extraction and the Atomic Absorption method. Analysis are shown plotted on accompanying maps ( in pocket).

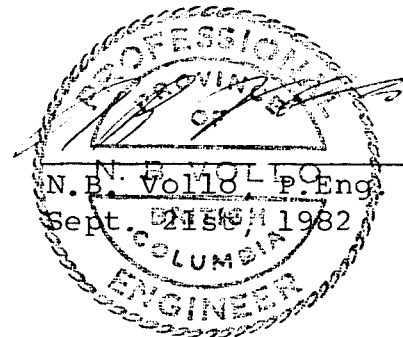
No significant metal anomalies are present with the exception of a few erratic Cu highs near the north end of Baseline 11,000E.

### DIAMOND DRILLING

Four holes totalling 230 m were drilled to test a moderately strong conductor associated with a magnetic high and erratic Cu soil highs. The conductor appears to be due to thin beds of graphite and disseminated pyrite and pyrrhotite in tuffite. The magnetic high is apparently due to the small pyrrhotite content.

### CONCLUSIONS AND RECOMMENDATIONS

The drilled conductor is due to minor concentrations of iron sulfides and graphite. All other conductors show no geochemical response, are in most cases associated with known graphitic or pyritic tuffites, and are unlikely to indicate economic bodies.



STATEMENT OF EXPENDITURES

PERSONNEL

N.B. Vollo, P.Eng., June 21st-Sept.21st, supervision, core logging, report, 10 days at \$300 -----	\$ 3,000
L. Loranger, supervision, magnetic and EM-16 surveys, June 21 - July 23, 18 days at \$170 -----	3,060
Draughting, July 23 - Sept 21, 10 days	1,700
V. BERGSTRAND, June 21 - July 23, grid chaining and soil survey, 18 days at \$100 -----	1,800
J. ROBINS, June 21-24, grid chaining and soil survey, 4 days at \$90 -----	360
D. Debodt, July 5 - 23, grid chaining and soil survey, 14 days at \$90 -----	1,260
subtotal	\$11,180

TOPOGRAPHIC MAP - Pacific Survey Corporation 1,800

GEOCHEMICAL ANALYSIS - 516 samples for Cu Zn Pb Ag at \$4.52/sample, Kamloops Research & Assay Laboratories Ltd. ----- 2,333

<u>DIAMOND DRILLING</u> - 230 m at \$50/m -----	11,500
Lost casing, shoe, -----	378
Mob and demob -----	500
subtotal-----	12,378

H Allen Diamond Drilling Ltd.

Box 1397

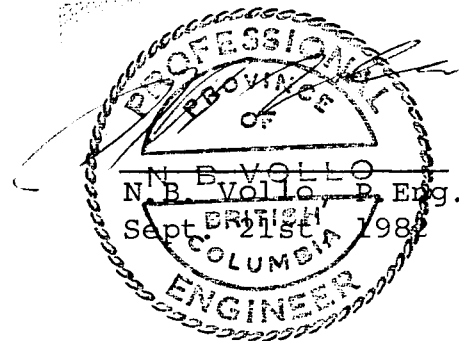
MERRITT, B.C. VOK2BO

TOTAL

\$27,691

QUALIFICATIONS OF OPERATOR

LEO LORANGER - is 53 years of age and has worked as fieldman and instrument operator since 1960; for Craigmont Mines Limited, since 1972. He has been carefully instructed in the operation of the Ronka Em-16 unit and the Geometrics G-836 magnetometer by the undersigned, who knows his work to be carefully and reliably done.





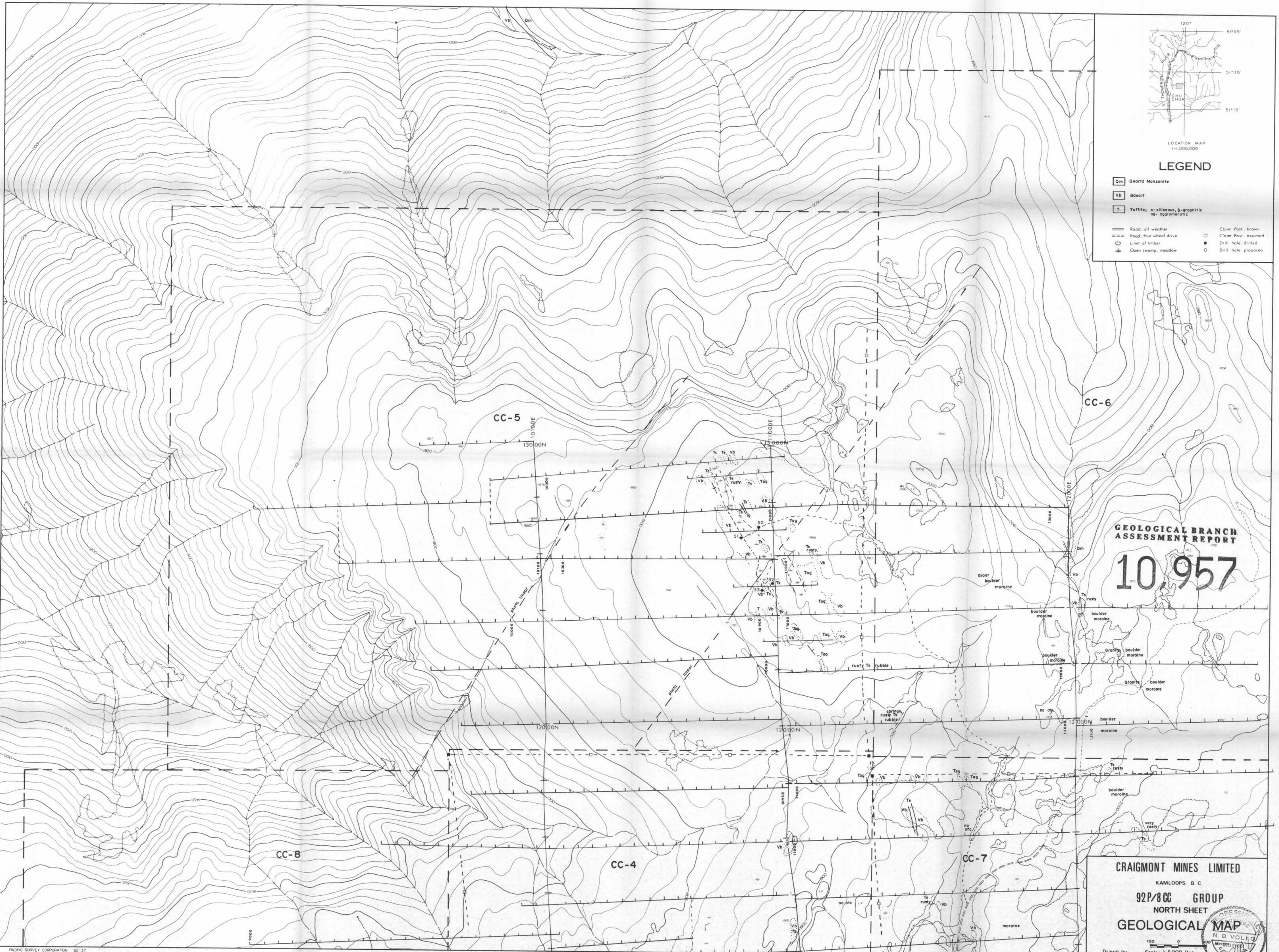












LOCATION MAP  
1:1,000,000

**LEGEND**

- Qm Quartz Monzonite
- Vb Basalt
- T Tuffite; s-siliceous, g-graphitic  
ag- agglomeratic
- Road, all weather
- Road, four wheel drive
- Limit of timber
- Open swamp, meadow
- Claim Post, known
- Claim Post, assumed
- Drill hole, drilled
- Drill hole proposed

CC-5

CC-6

**GEOLOGICAL BRANCH  
ASSESSMENT REPORT**

**10,957**

CC-8

CC-4

CC-7

**CRAIGMONT MINES LIMITED**

KAMLOOPS, B.C.

**92P/8CC GROUP**

NORTH SHEET

**GEOLOGICAL MAP**

Drawn by: Scale: 1:5,000 Date:

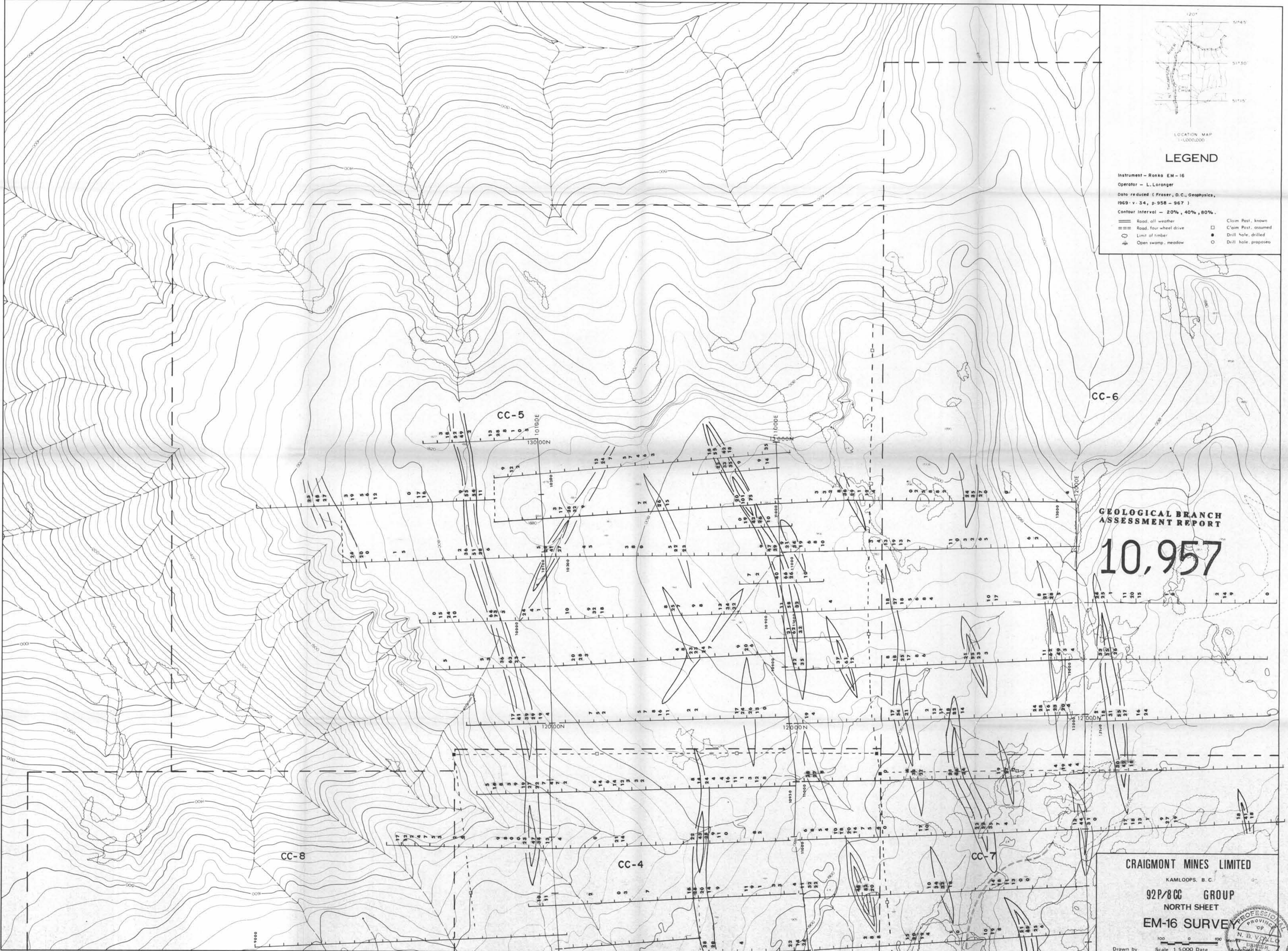




LOCATION MAP  
1:100,000

**LEGEND**

- Instrument - Ronko EM-16  
 Operator - L. Loranger  
 Data reduced (Fraser, D.C., Geophysics, 1969 v. 34, p. 958 - 967)  
 Contour interval - 20%, 40%, 80%.
- |  |                        |  |                      |
|--|------------------------|--|----------------------|
|  | Road, all weather      |  | Claim Post, known    |
|  | Road, four wheel drive |  | Claim Post, assumed  |
|  | Limit of timber        |  | Drill hole, drilled  |
|  | Open swamp, meadow     |  | Drill hole, proposed |



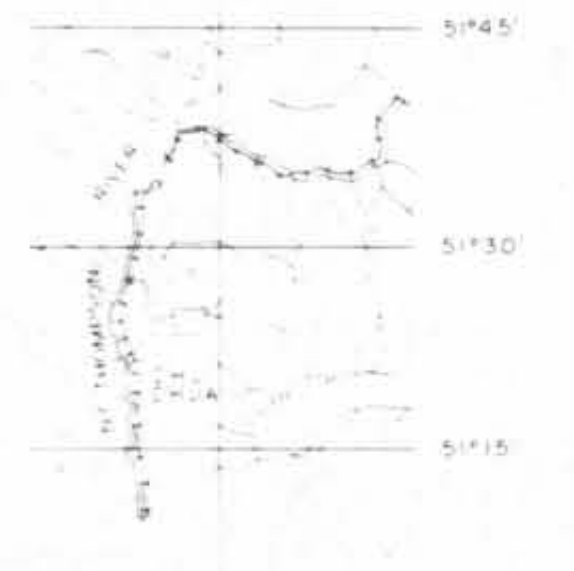
**GEOLOGICAL BRANCH  
ASSESSMENT REPORT**

**10,957**

**CRAIGMONT MINES LIMITED**  
 KAMLOOPS, B. C.  
**92P/8 CC GROUP**  
 NORTH SHEET  
**EM-16 SURVEY**

Drawn by \_\_\_\_\_ Scale 1:5,000 Date \_\_\_\_\_





**LEGEND**

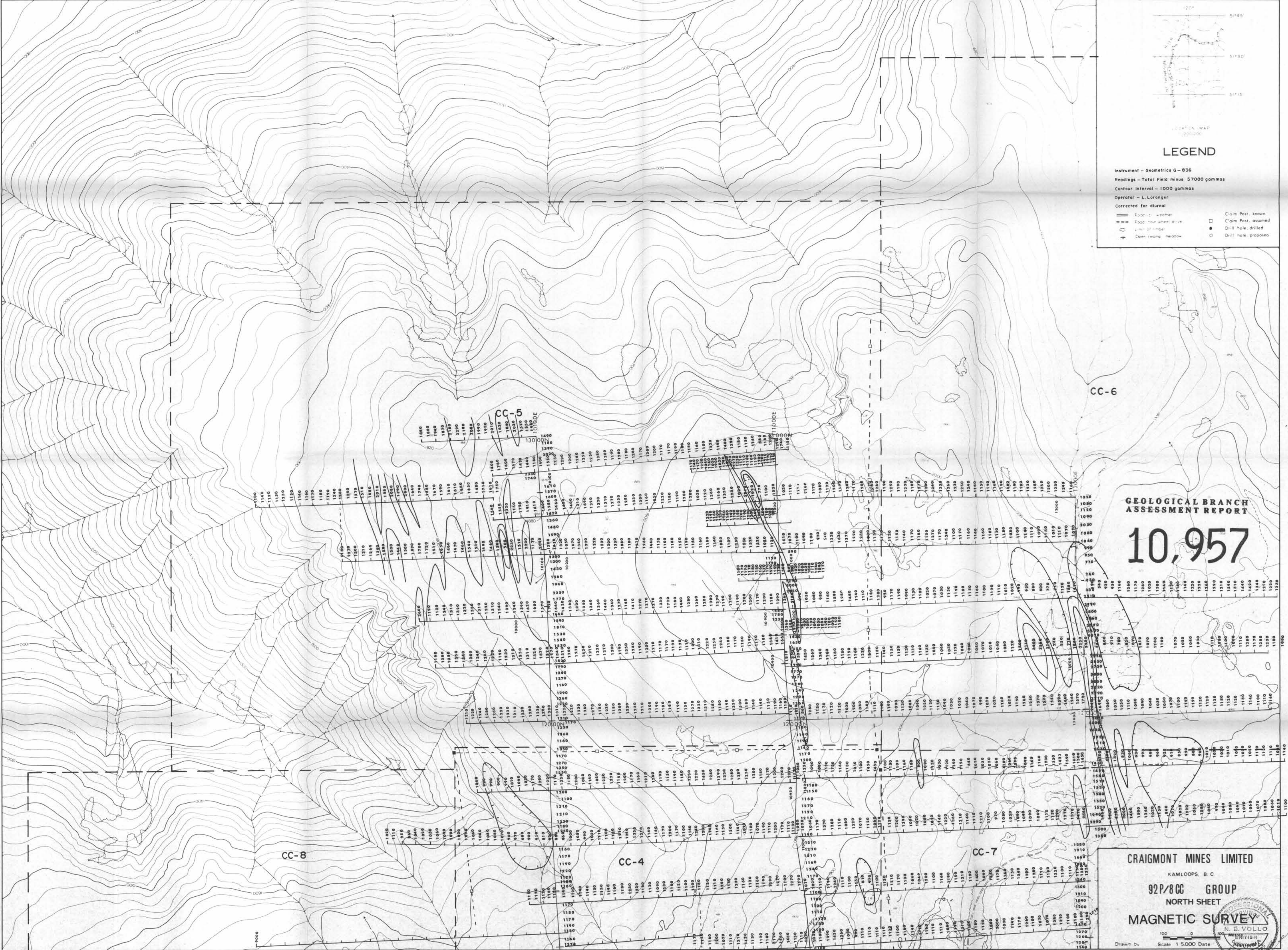
- Instrument - Geometrics G-836
  - Readings - Total Field minus 57000 gammas
  - Contour Interval - 1000 gammas
  - Operator - L. Loranger
  - Corrected for diurnal
- |  |                      |
|--|----------------------|
|  | Claim Post, known    |
|  | Claim Post, assumed  |
|  | Drill hole, drilled  |
|  | Drill hole, proposed |
|  |                      |

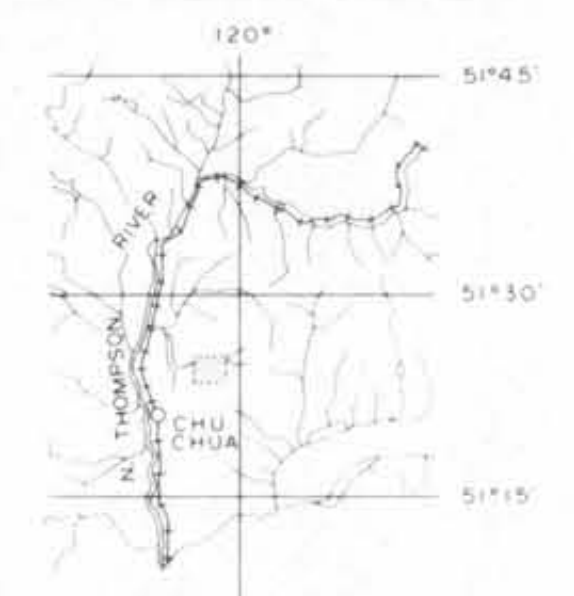
**GEOLOGICAL BRANCH  
ASSESSMENT REPORT**

**10,957**

**CRAIGMONT MINES LIMITED**  
KAMLOOPS, B.C.  
**92P/8CC GROUP**  
NORTH SHEET  
**MAGNETIC SURVEY**

Scale 1:5000 Date \_\_\_\_\_  
Drawn by \_\_\_\_\_





LOCATION MAP  
1:1,000,000

**LEGEND**

- Samples from - "B" horizon
- Analysis - Atomic absorption
- By: Kamloops Research & Assay Laboratories
- Extraction - hot aqua regia
- Readings in ppm
- Road, all weather
- Road, four wheel drive
- Limit of timber
- Open swamp, meadow
- Claim Post, known
- Claim Post, assumed
- Drill hole, drilled
- Drill hole, proposed



**GEOLOGICAL BRANCH  
ASSESSMENT REPORT**

**10,957**

**CRAIGMONT MINES LIMITED**

KAMLOOPS, B. C.

**92P/8CC GROUP**

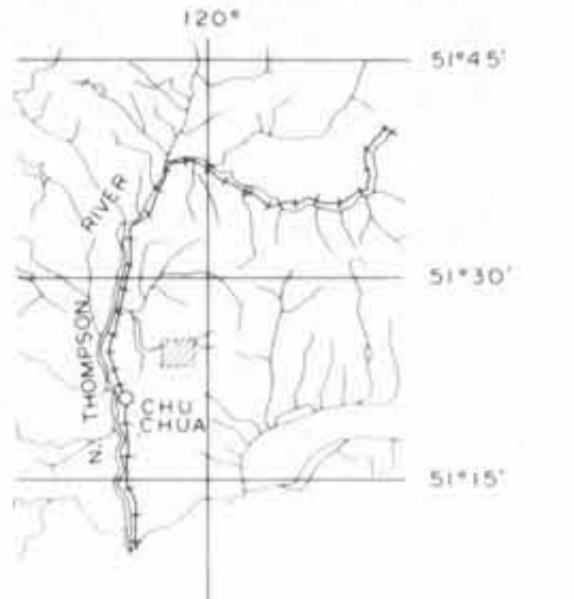
NORTH SHEET

**GEOCHEMICAL PLAN**

TOTAL CU

Scale: 1:5,000 Date: \_\_\_\_\_





LOCATION MAP  
1:1,000,000

**LEGEND**

- Samples from - "B" horizon
- Analysis - Atomic absorption
- By: Kamloops Research & Assay Laboratories
- Extraction - hot aquo regio
- Readings in ppm
- Road, all weather
- Road, four wheel drive
- Limit of timber
- ⊕ Open swamp, meadow
- Claim Post, known
- Claim Post, assumed
- Drill hole, drilled
- Drill hole, proposed



**GEOLOGICAL BRANCH  
ASSESSMENT REPORT**

**10,957**

**CRAIGMONT MINES LIMITED**  
KAMLOOPS, B. C.  
92P/8 CC GROUP  
NORTH SHEET  
**GEOCHEMICAL PLAN**  
TOTAL P.P.B.M.D.  
100  
Scale 1:5,000  
Drawn by: [Signature]  
Checked by: [Signature]