

82-#954-10975
15

REPORT ON THE
RYAN, MARK-K, NORTH-MARK, SOUTH-MARK 1-5
MINERAL CLAIMS
RECORD No.s 4668, 4729, 4791, 4823-4827
COLES CREEK AREA

OMINECA MINING DIVISION

Lat. $53^{\circ}32'$ Long. $127^{\circ}14' W$
N.T.S. 93E/11E

For

JOHN TAYLOR,
JAMES G. AGER, and
GORDON BLANKSTEIN

**GEOLOGICAL BRANCH
ASSESSMENT REPORT**

by

10,975

JAMES G. AGER, B.Sc.

January 21, 1983

GEOCHEMICAL SURVEY

TABLE OF CONTENTS

	<u>Page</u>
INTRODUCTION.....	1
PROPERTY.....	2
LOCATION AND ACCESS.....	2
GENERAL GEOLOGY.....	2
SURVEY GRID.....	6
GEOCHEMICAL SURVEY.....	7
DISCUSSION OF RESULTS.....	7
CONCLUSIONS AND RECOMMENDATIONS.....	8
STATEMENT OF QUALIFICATIONS.....	9
COST BREAKDOWN.....	10

ILLUSTRATIONS

FIGURE 1 - LOCATION MAP.....	follows page	2
FIGURE 2 - CLAIM MAP.....	" "	2
FIGURE 3 - GEOLOGY MAP.....	in pocket	
FIGURE 4 - COPPER.....	" "	
FIGURE 5 - MOLYBDENUM.....	" "	
FIGURE 6 - LEAD.....	" "	
FIGURE 7 - ZINC.....	" "	
FIGURE 8 - SILVER.....	" "	

INTRODUCTION:

Exploration work involving geochemical sampling was performed on a portion of the Ryan, Mark-K, North-Mark and South Mark 1-5 claims. This work was done between September, 21 to October 2, 1982.

Soil sampling was carried out on a flag and compass grid and the results analysed for copper, molybdenum, lead, zinc and silver.

A total of 1148 samples were taken to define a possible copper-molybdenum porphyry or a precious metal vein target.

PROPERTY

The property is located approximately 106km south west of Houston, B.C., and consists of eight contiguous mineral claims.

<u>Claim</u>	<u>Record #</u>	<u>Recording Date</u>
Ryan	4668	July 20, 1982
Mark-K	4729	August 20, 1982
North Mark	4791	October 5, 1982
South Mark 1	4823	October 5, 1982
South Mark 2	4824	" "
South Mark 3	4825	" "
South Mark 4	4826	" "
South Mark 5	4827	" "

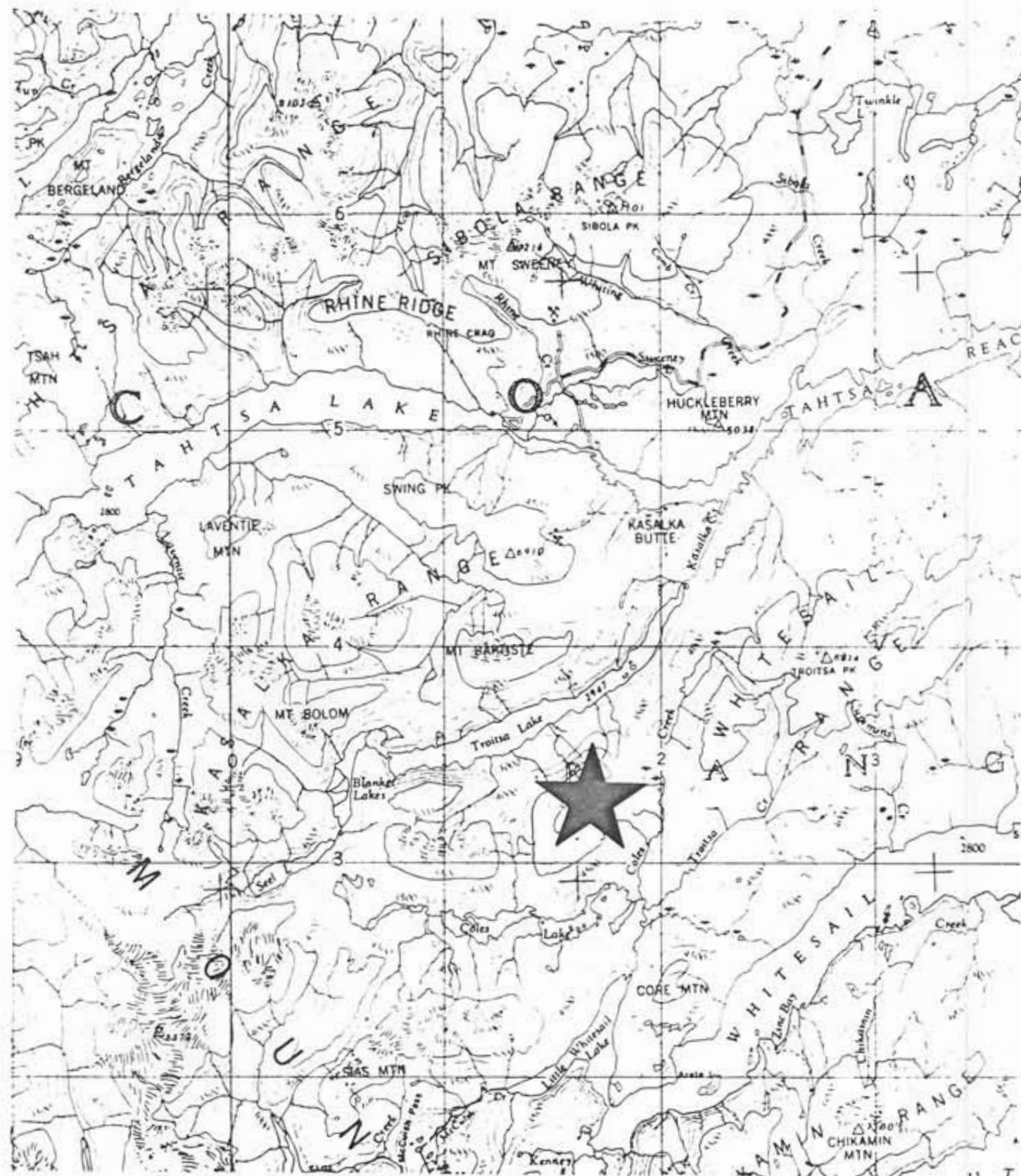
LOCATION AND ACCESS

The property is on the west tributary of Coles Creek, south of Troitsa Lake between Tahtsa and Whitesail Lakes. It is located at approximately 53° 32' North latitude, 127° 14' West longitude in Omineca Mining Division with topographic elevations ranging from 3500 feet to 5900 feet.

Access to the claim is taken by helicopter from Houston 106km to the southwest. Gravel roads originate from Burns Lake or Houston but terminate on the north shore of Tahtsa Lake (19km north of the claims).

GENERAL GEOLOGY

The metallic mineralization on the Mark claims near Coles Creek, B.C., is associated with Upper Cretaceous intrusive and volcanic activity. The property is within the Intermontane tectonic belt, apporixately 12.9km (8 miles) east of the boundary with the Coast Plutonic Complex. In the Tahtsa Area numerous small dykes and stocks which intrude Jurassic andesitic volcanic and sedimentary rocks of the



COLES CREEK PROPERTY

TAHTSA LAKE AREA, B.C. OMINECA M.D. 93 E/11

LOCATION MAP

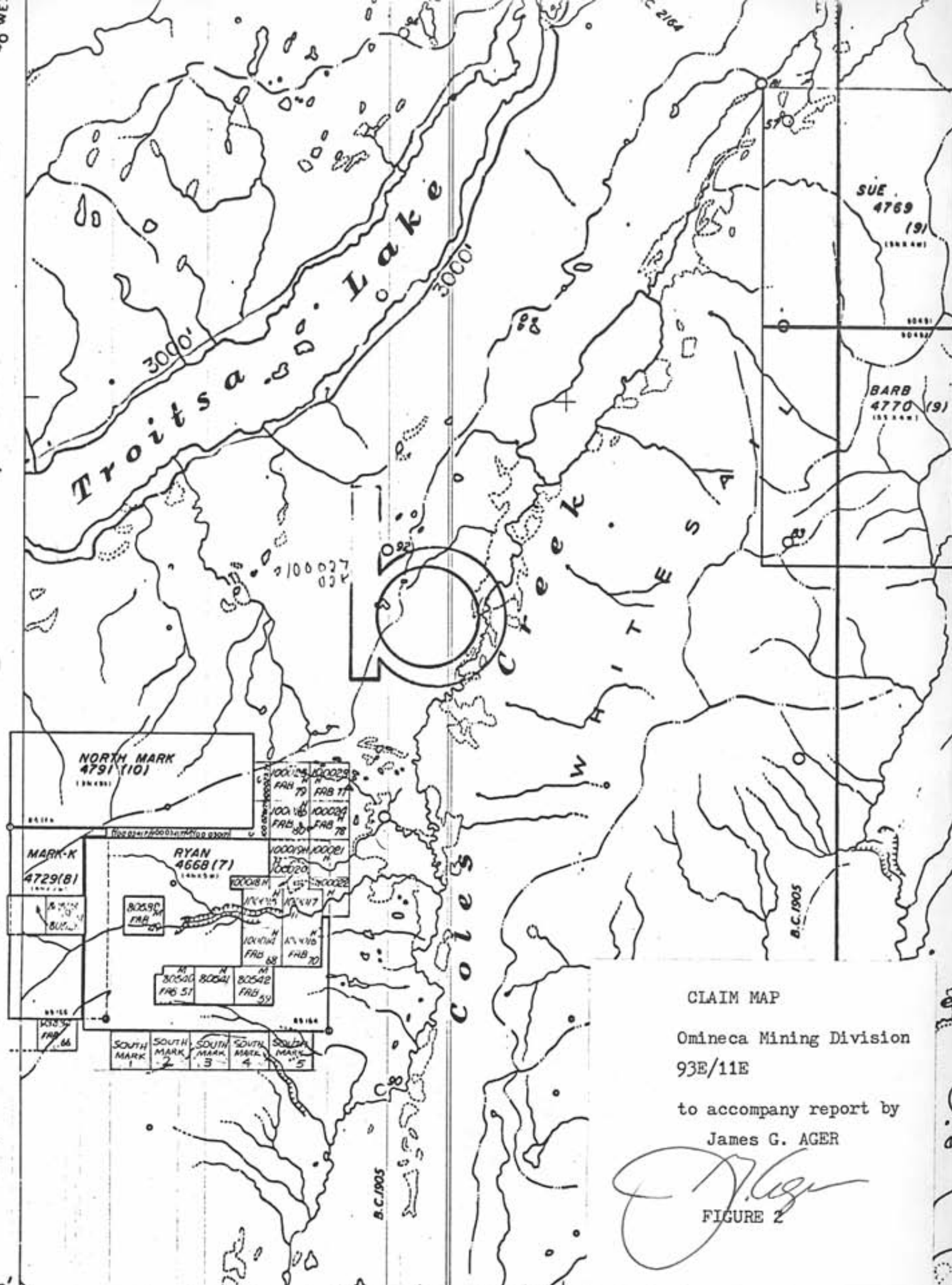
TO ACCOMPANY REPORT BY

James G. Ager
James G. Ager, B.Sc.,
Geologist

Fig. 1

ARCTEX ENGINEERING SERVICES

TO WE



CLAIM MAP
 Omineca Mining Division
 93E/11E
 to accompany report by
 James G. AGER

James G. Ager
 FIGURE 2

53°30'
 127°15' OMINECA MINING DIVISION

TO SOUTH SEE MAP 93 E/8

Hazelton Group are of similar age and composition to the batholithic rocks of the Coast Plutonic Complex. The Coles Creek property is uncommon because part of the volcanic cover which must have originally covered most of the intrusions is still preserved in down-faulted blocks.

Hazelton Group

The Hazelton Group, considered to be Jurassic in age, has been traditionally divided into three units. Recently, however, four formations have been designated in the Tahtsa Lake area (van der Heyden, 1982), two of which occur at the Coles Creek property.

The lower Jurassic Telkwa Formation occurs north and south of the quartz diorite dyke in the western part of the map area (see geology map included in pocket). It consists of variegated red, maroon, grey, and green tuff, as well as breccia, and flows of basaltic to rhyolitic composition. It may contain lesser volcanic conglomerate, red mudstone, siltstone and argillite.

The Smithers Formation is the other member of Hazelton Group at Coles Creek. It outcrops in the north and east part of the map area and consists of feldspathic volcanic sandstone, greywacke, tuff, breccia and tuffaceous sediments. Lesser amounts of conglomerate and flows are present. Limestone has been observed in this unit outside the Coles Creek property.

Kasalka Group

Unconformably overlying the Hazelton Group is a sequence of volcanic rocks of earliest Upper Cretaceous age. Of the three formational divisions of this group, only the lower, or Mt. Baptiste Formation, is exposed at Coles Creek.

The Mt. Baptiste Formation includes a complex mixture of rhyolite and subordinate andesitic pyroclastic and flow rocks. Near Mt. Baptiste this unit is up to 300m thick and is underlain by reddish-brown pebble conglomerate.

At Coles Creek the Mt. Baptiste Formation is distinguished by its cream to light-grey colour, friable nature, generally low dip angle, and lack of strong deformation. It is in fault contact with the Hazelton Group.

Bulkley Intrusions

Rhyodacite Breccia Pipe

A strongly mineralized rhyodacite breccia pipe is exposed in the main stream near the southeastern margin of the quartz diorite dyke (MacIntyre, 1976). Contacts with Hazelton Group wallrocks are obscured by pervasive hydrothermal alteration. Quartz, carbonate, sericite, chalcocopyrite, and magnetite make up the groundmass of the breccia. Vugs and cavities are common (MacIntyre, 1974).

Grandiorite Porphyry

An essentially simple, single-phase intrusion of biotite-granodiorite porphyry contains copper porphyry-type mineralization. It outcrops in the west branch of Coles Creek near the old camp, within the northwest $\frac{1}{4}$ of the Ryan claim. Pervasive feldspar-destructive alteration has obscured the contact zones but core drilling and mapping have determined the dimensions of the stock to be approximately 610m X 460m (2000' X 1500'). The stock has been dated at 83.8 ± 2.8 million years by the K-Ar method (MacIntyre, 1974).

Diamond drilling of the stock suggest that the grandiorite becomes coarser, more equigranular and much less altered with depth, especially in the central portion of the stock. In general, the intrusive is a medium-to coarse-grained

leucocratic biotite-feldspar or biotite-hornblende-feldspar porphyry.

A large dyke of dark feldspar-biotite porphyry approximately 30m (100') thick cuts quartz diorite and Hazelton Group rocks in the northern part of the Mark-K claim. It is hydrothermally altered and contains disseminated chalcopyrite. Its texture and composition suggest a close relation to the granodiorite porphyry stock.

Younger Andesite and Basalt Dykes

Porphyritic andesite dykes intrusive into the Hazelton Group and the quartz diorite dyke outcrop west of the breccia zone. They are unaltered and probably post-date the granodiorite porphyry stock.

Kasalka Intrusions

Dacite Porphyry

This group of intrusions is compositionally similar to volcanic rock of the Kasalka Group. Three types are known, of which the dacite porphyry is present at Coles Creek.

Porphyritic dacite or dacite porphyry outcrops in the main creek of the map area and in exposures to the north. The dacite appears to be a relatively flat-lying laccolith with radiating dyke-like extensions cutting both Hazelton and Kasalka Group strata. It is fine-grained, medium grey to dark grey siliceous rock. Most outcrops are hydrothermally altered and oxidation of abundant pyrite has produced a distinctive yellow gossan and local ferricrete (limonite-cemented talus). The most significant petrographic feature of the porphyritic dacite is rounded or embayed quartz phenocrysts.

Breccia dykes of dacite porphyry are located in the northern part of the map area in a northern tributary of the west branch of Coles Creek. They vary from 5cm to 2m in width and intrude rocks of the Hazelton Group (?) near the contact with the Dacite Porphyry. Fragments of dacite porphyry and andesite are aligned with the northerly trend of the dykes. The matrix is composed of quartz, carbonate, and pyrite.

Quartz Diorite

A large northeast-trending dyke or stock (?) of quartz diorite underlies much of the Mark-K claim. There is some discrepancy in recent mapping as to the classification of this mineralized intrusive. Hodder and MacIntyre (1979) consider it to be a type of Kasalka Intrusion. Woodsworth (1980), van der Heyden (1982) and MacIntyre (1976) consider it to be a Bulkley intrusion. No absolute age dating has been done on this intrusive.

SURVEY GRID

In the North Mark sample area two base lines were run north-south at 103+00 E and 117+00E with cross lines east-west at 100m intervals.

The West Ryan, Mark-K area contain two north-south tie lines (100 + 50E, 110 + 50E) and base line 108 + 100E with sample lines run east-west between (100m separation).

In the South Ryan and South Mark areas, a base line was established at 120 + 00E with two tie lines at 109 + 00E and 132 + 00E. Sample lines were run east-west on 100m spacings.

GEOCHEMICAL SURVEY

Soil samples were taken from the "B" horizon at 50 meter intervals and assayed for metals as recorded in Figure 4 to Figure 8.

The samples were analyzed by Acme Analytical Laboratories Ltd. of Vancouver, B.C. They were subjected to -80 mesh sieving, digestion by hot-perchloricnitric acid, then analysis by atomic absorption. The collected soil was run for copper, molybdenum, lead, zinc and silver.

DISCUSSION OF RESULTS

A number of metallic element anomalies occur on the property, and are detailed in Figures 4 through 8.

The largest and strongest copper-molybdenum anomaly occurs on the Mark-K claim between stations 102 + 00N and 111 + 00N in a north-east direction with width up to 200m. The south and southwest is yet open to sampling. This zone appears to correspond with the western contact between the quartz diorite and the Hazelton Group of rocks.

The highest lead, zinc and silver concentrations occur to the south of the Ryan claim, with two locations, 94+00N-120+50E and 95+00N-122+00E containing up to 3050ppm lead, 3000ppm zinc and 4.7ppm silver. An apparent north-west trend develops in the South Mark claim area with silver and zinc values and continues onto the Ryan claim.

Other areas of spot high samples occur in the Mark-K and North Mark claims, and should be further investigated.

CONCLUSIONS AND RECOMMENDATIONS

Two basic areas of interest have been outlined in the survey.

The first is an apparent copper-molybdenum porphyry-type zone related to two small intrusions. This mineralization appears to be related to hydrothermal alteration in local area contacts, fault zones or breccia pipes.

The second, a possible stratiform base metal potential, with high silver values indicating the presence of epithermal precious metal vein deposits.

It is recommended that past data from Amax and Kennco be analyzed with a 'ground truth" survey to verify and complement new information. Further soil sampling should be carried out into outlying areas of the claims as well as a magnetometer survey. Detailed geological work should be done for possible epithermal veins in the South-Mark-Ryan area, as well as running all samples for gold. Shallow diamond drilling could then be carried out over the best targets to test the zones at depth.

STATEMENT OF QUALIFICATIONS

I, James G. Ager, B.Sc., of Vancouver, British Columbia, do hereby state that:

1. I am a Consulting Geologist. I graduated from the University of British Columbia, Canada in 1972.

2. I have worked in the exploration field as follows:

-Jayco Syndicate; summer season, 1967.

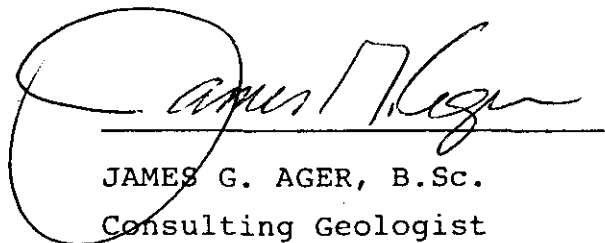
-Magnetron Mining Ltd; May, 1968-September, 1970.

-Magnetron Mining Ltd; summer season, 1971.

-Sibola Mines Ltd; May, 1972-October, 1974.

-Self-employed Consulting Geologist; October, 1974 to present, as Geologist and Project Supervisor for various Mining Companies throughout British Columbia and the Yukon including Pryme Energy Resources Ltd., Lansdowne Oil and Minerals Ltd., Westbank Resources Inc., and Canuck Petroleum Ltd.

DATED at VANCOUVER, B.C. the 21st day of January, 1983.


JAMES G. AGER, B.Sc.
Consulting Geologist

COST BREAKDOWN FOR GEOCHEMICAL SURVEY

Dates of Work: September 21 to October 2, 1982.

Contract from Hi-Tec Resource Management

4 personell;

Labour-12 days @ \$850/day \$ 10,200.00

Transportation 840.00

Meals & accommodation 271.80

Materials 394.00

\$ 11,705.80

Geochemical Assays 6,366.90

Helicopter 1,417.08

Total \$ 19,489.78

A P P E N D I X



CHEMEX LABS LTD.

212 BROOKSBANK AVE.
 NORTH VANCOUVER, B.C.
 CANADA V7J 2C1
 TELEPHONE: (604) 984-0221
 TELEX: 043-52597

• ANALYTICAL CHEMISTS • GEOCHEMISTS • REGISTERED ASSAYERS

CERTIFICATE OF ANALYSIS

TO : HI-TEC RESOURCE MANAGEMENT LTD.,

930 BEAKINSFIELD ROAD
 NORTH VANCOUVER, B.C.
 V7R 1S9

CERT. # : A8213810-001-A
 INVOICE # : 18213810
 DATE : 13-OCT-82
 P.O. # : NONE

Sample description	Prep code	Cu ppm	Mo ppm	Pb ppm	Zn ppm	Ag ppm	
89N 108+00E	201	30	1	14	178	0.2	--
89N 108+50E	201	43	1	13	145	0.1	--
89N 109+00E	201	36	1	20	92	0.1	--
89N 109+50E	201	33	2	12	93	0.1	--
89N 110+00E	201	30	1	9	90	0.1	--
89N 110+50E	201	8	1	9	40	0.1	--
89N 111+00E	201	29	1	11	123	0.1	--
89N 111+50E	201	19	2	6	61	0.1	--
89N 112+00E	201	19	1	9	74	0.1	--
89N 112+50E	201	30	1	10	84	0.1	--
89N 113+00E	201	10	1	5	74	0.1	--
89N 113+50E	201	13	1	6	85	0.8	--
89N 114+00E	201	15	1	7	75	0.2	--
89N 114+50E	201	19	1	7	78	0.4	--
89N 115+00E	201	44	1	6	80	0.1	--
89N 115+50E	201	37	1	9	92	0.1	--
89N 116+00E	201	40	1	9	98	0.1	--
89N 116+50E	201	6	1	11	43	0.2	--
89N 117+00E	201	17	1	9	85	0.2	--
89N 117+50E	201	46	1	11	110	0.1	--
89N 118+00E	201	23	1	8	78	0.1	--
89N 118+50E	201	22	4	14	80	0.4	--
89N 119+00E	201	27	2	11	98	0.1	--
89N 119+50E	201	19	1	6	88	0.5	--
89N 120+00E	201	14	1	7	62	0.1	--
89N 120+50E	201	32	4	11	116	1.0	--
89N 121+00E	201	14	1	6	61	0.2	--
89N 121+50E	201	38	1	35	280	1.0	--
89N 122+00E	201	14	1	5	95	0.1	--
89N 122+50E	201	52	1	4	155	0.5	--
89N 123+00E	201	19	1	11	70	0.2	--
89N 123+50E	201	34	1	17	160	0.2	--
89N 124+00E	201	43	1	21	163	0.5	--
89N 124+50E	201	22	1	8	128	0.2	--
89N 125+00E	201	13	1	11	53	0.2	--
89N 126+00E	201	43	4	11	130	0.1	--
89N 126+50E	201	26	2	11	75	0.1	--
89N 127+00E	201	20	1	10	78	0.1	--
89N 127+50E	201	45	1	9	58	0.5	--
89N 128+00E	201	19	2	9	80	0.1	--

Hart Buchler

Certified by





CHEMEX LABS LTD.

212 BROOKSBANK AVE.
 NORTH VANCOUVER, B.C.
 CANADA V7J 2C1
 TELEPHONE: (604) 984-0221
 TELEX: 043-52597

• ANALYTICAL CHEMISTS

• GEOCHEMISTS

• REGISTERED ASSAYERS

CERTIFICATE OF ANALYSIS

TO : HI-TEC RESOURCE MANAGEMENT LTD.,

930 BEAKINSFIELD ROAD
 NORTH VANCOUVER, B.C.
 V7R 1S9

CERT. # : A8213810-002-A
 INVOICE # : 18213810
 DATE : 13-OCT-82
 P.O. # : NONE

Sample description	Prep code	Cu ppm	Mo ppm	Pb ppm	Zn ppm	Ag ppm	
89N 128+50E	201	25	1	10	95	0.1	--
89N 129+00E	201	17	1	8	33	0.1	--
89N 129+50E	201	19	2	7	58	0.3	--
89N 130+00E	201	20	1	6	90	0.1	--
89N 130+50E	201	10	2	8	63	0.1	--
89N 131+00E	201	18	2	7	98	0.1	--
89N 131+50E	201	23	1	9	80	0.5	--
89N 132+00E	201	8	1	7	66	0.1	--
89N 132+50E	201	16	1	9	52	0.2	--
89N 133+00E	201	25	2	8	76	0.2	--
90N 108+00E	201	35	1	28	160	0.1	--
90N 108+50E	201	36	2	11	170	0.4	--
90N 109+00E	201	36	1	22	173	0.1	--
90N 109+50E	201	37	1	20	165	0.1	--
90N 110+00E	203	42	2	18	165	0.1	--
90N 110+50E	201	52	1	17	170	0.1	--
90N 111+00E	201	42	1	16	180	0.1	--
90N 111+50E	201	36	1	11	112	0.1	--
90N 112+00E	201	30	2	11	103	0.1	--
90N 112+50E	201	26	1	7	88	0.1	--
90N 113+00E	201	23	1	7	70	0.1	--
90N 113+50E	201	16	2	6	56	0.3	--
90N 114+00E	201	6	2	6	129	0.2	--
90N 114+50E	201	27	1	7	86	0.1	--
90N 115+00E	201	43	1	9	110	0.1	--
90N 115+50E	201	38	1	10	105	0.1	--
90N 116+00E	201	14	2	8	60	0.4	--
90N 116+50E	201	18	1	5	80	0.1	--
90N 117+00E	201	18	2	5	82	0.1	--
90N 117+50E	201	33	1	7	90	0.1	--
90N 118+00E	201	7	1	11	65	0.1	--
90N 118+50E	203	20	1	8	98	0.1	--
90N 119+00E	201	13	1	7	62	0.1	--
90N 119+50E	201	21	2	6	64	0.8	--
90N 120+00E	201	19	1	9	130	0.1	--
90N 120+50E	201	20	3	8	78	0.1	--
90N 121+00E	201	40	6	14	112	0.3	--
90N 121+50E	201	20	1	9	62	0.4	--
90N 122+00E	201	23	1	8	118	0.1	--
90N 122+50E	203	33	2	8	110	0.8	--



Certified by *Hart Bichler*



CHEMEX LABS LTD.

212 BROOKSBANK AVE.
 NORTH VANCOUVER, B.C.
 CANADA V7J 2C1
 TELEPHONE: (604) 984-0221
 TELEX: 043-52597

• ANALYTICAL CHEMISTS • GEOCHEMISTS • REGISTERED ASSAYERS

CERTIFICATE OF ANALYSIS

TO : HI-TEC RESOURCE MANAGEMENT LTD.,

930 BEAKINSFIELD ROAD
 NORTH VANCOUVER, B.C.
 V7R 1S9

CERT. # : A8213810-003-A
 INVOICE # : 18213810
 DATE : 13-OCT-82
 P.O. # : NONE

Sample description	Prep code	Cu ppm	Mo ppm	Pb ppm	Zn ppm	Ag ppm	
90N 123+00E	201	24	1	9	72	0.1	--
90N 123+50E	201	18	1	7	87	0.1	--
90N 124+00E	201	43	4	8	75	0.3	--
90N 124+50E	201	57	4	11	87	0.1	--
90N 125+00E	201	23	2	8	88	0.1	--
90N 125+50E	201	28	1	10	74	0.2	--
90N 126+00E	201	10	1	7	53	0.1	--
90N 126+50E	201	25	1	8	93	0.1	--
90N 127+00E	201	11	1	7	58	0.1	--
90N 127+50E	201	6	1	4	44	0.1	--
90N 128+00E	201	22	1	12	70	0.2	--
90N 128+50E	201	25	1	4	125	0.4	--
90N 129+00E	201	40	1	6	90	0.1	--
90N 129+50E	201	14	1	9	50	0.1	--
90N 130+00E	201	9	1	11	57	0.1	--
90N 130+50E	201	13	1	9	76	0.1	--
90N 131+00E	201	26	2	14	70	0.1	--
90N 131+50E	201	16	1	8	60	0.1	--
90N 132+00E	201	5	1	3	37	0.3	--
90N 132+50E	201	23	1	9	65	0.1	--
90N 133+00E	201	14	1	46	165	0.1	--
L 91N 108+00E	201	31	1	16	125	0.1	--
L 91N 108+50E	201	28	1	12	140	0.1	--
L 91N 109+00E	201	37	1	14	135	0.1	--
L 91N 109+50E	201	55	1	22	148	0.1	--
L 91N 110+00E	201	54	1	18	150	0.1	--
L 91N 110+50E	201	32	1	10	142	0.1	--
L 91N 111+00E	201	39	1	21	207	0.1	--
L 91N 111+50E	201	13	2	12	147	0.1	--
L 91N 112+00E	201	11	1	10	96	0.1	--
L 91N 112+50E	201	14	1	6	83	0.1	--
L 91N 113+00E	201	20	1	6	68	0.1	--
L 91N 113+50E	201	23	2	8	86	0.2	--
L 91N 114+00E	201	56	2	7	100	0.1	--
L 91N 114+50E	201	36	1	12	95	0.1	--
L 91N 115+00E	201	33	1	8	80	0.1	--
L 91N 115+50E	201	39	2	11	103	0.1	--
L 91N 116+00E	201	20	1	10	172	0.3	--
L 91N 116+50E	201	14	1	8	69	0.1	--
L 91N 117+00E	201	32	1	10	86	0.1	--



Certified by *Hart Bichler*



CHEMEX LABS LTD.

212 BROOKSBANK AVE.
 NORTH VANCOUVER, B.C.
 CANADA V7J 2C1
 TELEPHONE: (604) 984-0221
 TELEX: 043-52597

• ANALYTICAL CHEMISTS • GEOCHEMISTS • REGISTERED ASSAYERS

CERTIFICATE OF ANALYSIS

TO : HI-TEC RESOURCE MANAGEMENT LTD.,

930 BEAKINSFIELD ROAD
 NORTH VANCOUVER, B.C.
 V7R 1S9

CERT. # : A8213810-004-A
 INVOICE # : I8213810
 DATE : 13-OCT-82
 P.C. # : NONE

Sample description	Prep code	Cu ppm	Mo ppm	Pb ppm	Zn ppm	Ag ppm	
L 91N 117+50E	201	40	4	7	68	0.5	--
L 91N 118+00E	201	16	1	8	105	0.1	--
L 91N 118+50E	201	13	1	7	76	0.2	--
L 91N 119+00E	201	6	1	7	67	0.1	--
L 91N 119+50E	201	9	2	6	60	0.3	--
L 91N 120+00E	201	12	2	5	67	0.3	--
L 91N 120+50E	201	15	1	9	76	0.5	--
L 91N 121+00E	201	14	1	7	71	0.2	--
L 91N 121+50E	201	18	1	6	105	0.3	--
L 91N 122+00E	201	33	2	19	132	1.3	--
L 91N 122+50E	201	22	1	13	160	0.3	--
L 91N 123+00E	201	20	2	7	100	0.2	--
L 91N 123+50E	201	20	2	27	200	0.7	--
L 91N 124+00E	201	20	2	9	120	0.1	--
L 91N 124+50E	201	16	1	6	110	0.2	--
L 91N 125+00E	201	22	1	9	90	0.3	--
L 91N 125+50E	201	15	1	6	90	0.1	--
L 91N 126+00E	201	13	1	10	68	0.1	--
L 91N 126+50E	201	14	2	7	85	0.1	--
L 91N 127+00E	201	21	1	4	88	0.1	--
L 91N 127+50E	201	18	1	10	41	0.2	--
L 91N 128+00E	201	10	1	7	56	0.1	--
L 91N 128+50E	201	12	1	8	63	0.1	--
L 91N 129+00E	201	13	1	10	53	0.2	--
L 91N 129+50E	201	18	1	8	76	0.5	--
L 91N 130+00E	201	15	1	7	128	0.2	--
L 91N 130+50E	201	15	1	6	78	0.2	--
L 91N 131+00E	201	13	1	8	65	0.2	--
L 91N 131+50E	201	12	1	10	56	0.1	--
L 91N 132+00E	201	18	1	8	44	0.1	--
L 91N 132+50E	201	35	1	7	60	0.2	--
L 91N 133+00E	201	27	2	40	193	0.4	--
92N 108+00E	201	17	1	8	70	0.1	--
92N 108+50E	201	41	2	33	195	0.1	--
92N 109+00E	201	61	2	35	202	0.2	--
92N 109+50E	201	34	2	24	230	0.2	--
92N 110+00E	201	25	1	23	170	0.2	--
92N 110+50E	201	16	1	15	108	0.2	--
92N 111+00E	201	23	1	15	130	0.1	--
92N 111+50E	201	55	1	27	165	0.1	--

Hart Buchler

Certified by





CHEMEX LABS LTD.

212 BROOKSBANK AVE.
NORTH VANCOUVER, B.C.
CANADA V7J 2C1

• ANALYTICAL CHEMISTS

• GEOCHEMISTS

• REGISTERED ASSAYERS

TELEPHONE: (604) 984-0221
TELEX: 043-52597

CERTIFICATE OF ANALYSIS

TO : HI-TEC RESOURCE MANAGEMENT LTD.,

930 BEAKINSFIELD ROAD
NORTH VANCOUVER, B.C.
V7R 1S9

CERT. # : A8213810-005-A
INVOICE # : I8213810
DATE : 13-OCT-82
P.O. # : NONE

Sample description	Prep code	Cu ppm	Mo ppm	Pb ppm	Zn ppm	Ag ppm	
92N 112+00E	201	33	1	20	128	0.2	--
92N 112+50E	201	28	1	17	190	0.2	--
92N 113+00E	201	34	2	21	165	0.1	--
92N 113+50E	201	14	1	9	88	0.1	--
92N 114+00E	201	22	1	10	80	0.1	--
92N 114+50E	201	31	1	14	122	0.1	--
92N 115+00E	201	25	1	10	106	0.1	--
92N 115+50E	201	34	1	12	108	0.1	--
92N 116+00E	201	14	1	10	48	0.1	--
92N 116+50E	201	18	2	8	80	0.1	--
92N 117+00E	201	46	1	9	85	0.1	--
92N 117+50E	201	10	1	9	86	0.1	--
92N 118+00E	201	19	4	14	85	0.1	--
92N 118+50E	201	17	2	9	85	0.1	--
92N 119+00E	201	14	2	10	83	0.3	--
92N 119+50E	201	27	1	5	95	0.1	--
92N 120+00E	201	10	1	5	68	0.9	--
92N 120+50E	201	11	1	8	48	0.1	--
92N 121+00E	201	10	1	9	55	0.1	--
92N 121+50E	201	90	1	10	159	0.5	--
92N 122+00E	201	34	3	57	430	1.3	--
92N 122+50E	201	14	2	14	67	0.5	--
92N 123+00E	201	23	1	11	98	0.1	--
92N 123+50E	201	27	1	8	125	0.2	--
92N 124+00E	201	11	2	9	44	0.1	--
92N 124+50E	201	18	2	8	68	0.1	--
92N 125+00E	201	23	1	8	55	0.2	--
92N 125+50E	201	15	1	7	55	0.2	--
92N 126+00E	201	10	1	7	57	0.1	--
92N 126+50E	201	13	1	7	67	0.1	--
92N 127+00E	201	12	1	8	58	0.1	--
92N 127+50E	201	23	1	7	99	0.1	--
92N 128+00E	201	10	1	7	59	0.1	--
92N 128+50E	201	15	1	12	70	0.2	--
92N 129+00E	201	7	1	8	72	0.1	--
92N 129+50E	201	11	2	5	206	0.4	--
92N 130+00E	201	8	1	5	77	0.1	--
92N 130+50E	201	22	1	9	86	0.2	--
92N 131+00E	201	16	1	13	83	0.1	--
92N 131+50E	201	14	1	9	72	0.3	--



Certified by *Hart Bichler*



CHEMEX LABS LTD.

212 BROOKSBANK AVE.
 NORTH VANCOUVER, B.C.
 CANADA V7J 2C1
 TELEPHONE: (604) 984-0221
 TELEX: 043-52597

• ANALYTICAL CHEMISTS

• GEOCHEMISTS

• REGISTERED ASSAYERS

CERTIFICATE OF ANALYSIS

TO : HI-TEC RESOURCE MANAGEMENT LTD.,

930 BEAKINSFIELD ROAD
 NORTH VANCOUVER, B.C.
 V7R 1S9

CERT. # : A8213810-006-A
 INVOICE # : I8213810
 DATE : 13-OCT-82
 P.O. # : NONE

Sample description	Prep code	Cu ppm	Mo ppm	Pb ppm	Zn ppm	Ag ppm	
92N 132+00E	201	13	1	7	65	0.1	--
92N 132+50E	201	16	1	47	158	0.5	--
92N 133+00E	201	11	2	7	57	0.1	--
L 93N 108+00E	201	31	1	13	117	0.1	--
L 93N 108+50E	203	36	1	26	159	0.1	--
L 93N 109+00E	201	24	1	17	100	0.1	--
L 93N 109+50E	201	19	1	15	150	0.1	--
L 93N 110+00E	201	19	1	16	90	0.6	--
L 93N 110+50E	201	32	1	27	165	0.1	--
L 93N 111+00E	201	28	1	26	185	0.1	--
L 93N 111+50E	201	35	1	27	185	0.1	--
L 93N 112+00E	201	32	1	8	98	0.1	--
L 93N 112+50E	201	40	1	27	172	0.1	--
L 93N 113+00E	201	45	1	21	165	0.2	--
L 93N 113+50E	201	10	2	6	62	0.2	--
L 93N 114+00E	201	13	1	4	55	0.2	--
L 93N 114+50E	201	33	1	10	127	0.1	--
L 93N 115+00E	201	86	1	9	140	0.1	--
L 93N 115+50E	201	38	1	9	85	0.1	--
L 93N 116+00E	201	10	3	12	52	0.1	--
L 93N 116+50E	201	13	1	14	100	0.1	--
L 93N 117+00E	201	136	2	13	215	0.3	--
L 93N 117+50E	201	14	3	11	65	0.2	--
L 93N 118+00E	201	16	2	8	64	0.6	--
L 93N 118+50E	201	37	1	9	90	0.1	--
L 93N 119+00E	201	10	2	6	72	0.1	--
L 93N 119+50E	201	14	3	6	67	0.1	--
L 93N 120+00E	203	5	1	1	25	0.1	--
L 93N 120+50E	201	22	3	9	80	0.3	--
L 93N 121+00E	201	34	4	13	310	1.3	--
L 93N 121+50E	201	35	2	20	103	2.2	--
L 93N 122+00E	201	15	2	17	84	0.2	--
L 93N 122+50E	201	15	3	14	109	0.4	--
L 93N 123+00E	201	15	2	8	65	0.1	--
L 93N 123+50E	201	21	2	7	62	0.2	--
L 93N 124+00E	201	15	1	9	43	0.1	--
L 93N 124+50E	201	22	2	7	65	0.1	--
L 93N 125+00E	201	24	1	7	73	0.1	--
L 93N 125+50E	201	20	2	9	80	0.1	--
L 93N 126+00E	201	14	1	20	54	0.1	--



Certified by *Hart Bichler*



CHEMEX LABS LTD.

212 BROOKSBANK AVE.
 NORTH VANCOUVER, B.C.
 CANADA V7J 2C1
 TELEPHONE: (604) 984-0221
 TELEX: 043-52597

• ANALYTICAL CHEMISTS • GEOCHEMISTS • REGISTERED ASSAYERS

CERTIFICATE OF ANALYSIS

TO : HI-TEC RESOURCE MANAGEMENT LTD.,

930 BEAKINSFIELD ROAD
 NORTH VANCOUVER, B.C.
 V7R 1S9

CERT. # : A8213811-001-A
 INVOICE # : I8213811
 DATE : 13-OCT-82
 P.O. # : NONE

Sample description	Prep code	Cu ppm	Mo ppm	Pb ppm	Zn ppm	Ag ppm	
L 93N 126+50E	201	15	2	10	60	0.2	--
L 93N 127+00E	201	16	2	15	70	0.1	--
L 93N 127+50E	201	12	1	8	73	0.1	--
L 93N 128+00E	201	18	1	12	45	0.1	--
L 93N 128+50E	201	9	2	5	45	0.1	--
L 93N 129+00E	201	10	1	9	61	0.3	--
L 93N 129+50E	201	20	2	6	90	0.1	--
L 93N 130+00E	201	22	3	9	67	0.1	--
L 93N 130+50E	201	11	2	9	54	0.1	--
L 93N 131+00E	201	11	1	11	57	0.1	--
L 93N 131+50E	201	23	1	8	90	0.1	--
L 93N 132+00E	201	28	1	4	78	0.1	--
L 93N 132+50E	201	24	2	6	57	0.1	--
L 93N 133+00E	201	8	1	8	30	0.1	--
94N 108+00E	201	35	1	31	132	0.1	--
94N 108+50E	201	42	2	14	96	0.1	--
94N 109+00E	201	48	3	29	175	0.1	--
94N 109+50E	201	53	2	43	200	0.1	--
94N 110+00E	201	35	1	29	155	0.1	--
94N 110+50E	201	39	1	27	162	0.1	--
94N 111+00E	201	31	1	25	152	0.1	--
94N 111+50E	201	9	1	11	47	0.2	--
94N 112+00E	201	33	1	28	140	0.1	--
94N 112+50E	201	48	1	29	150	0.1	--
94N 113+00E	201	31	2	19	148	0.1	--
94N 113+50E	201	17	3	9	72	0.5	--
94N 114+00E	201	21	1	16	130	0.1	--
94N 114+50E	201	65	1	15	110	0.1	--
94N 115+00E	201	47	1	45	147	0.2	--
94N 115+50E	201	40	1	67	310	0.8	--
94N 116+00E	201	27	2	10	98	0.3	--
94N 116+50E	201	41	2	14	113	0.1	--
94N 117+00E	201	32	1	7	81	0.1	--
94N 117+50E	201	20	1	24	100	0.1	--
94N 118+00E	201	21	1	13	68	0.1	--
94N 118+50E	201	16	1	8	61	0.6	--
94N 119+00E	201	19	1	7	67	0.2	--
94N 119+50E	201	33	1	185	210	2.2	--
94N 120+00E	201	20	1	10	63	0.2	--
94N 120+50E	201	240	2	3000	1300	4.7	--



Certified by *Hart Bichler*



CHEMEX LABS LTD.

212 BROOKSBANK AVE.
 NORTH VANCOUVER, B.C.
 CANADA V7J 2C1
 TELEPHONE: (604) 984-0221
 TELEX: 043-52597

• ANALYTICAL CHEMISTS • GEOCHEMISTS • REGISTERED ASSAYERS

CERTIFICATE OF ANALYSIS

TO : HI-TEC RESOURCE MANAGEMENT LTD.,

930 BEAKINSFIELD ROAD
 NORTH VANCOUVER, B.C.
 V7R 1S9

CERT. # : A8213811-002-A
 INVOICE # : I8213811
 DATE : 13-OCT-82
 P.O. # : NONE

Sample description	Prep code	Cu ppm	Mo ppm	Pb ppm	Zn ppm	Ag ppm	
94N 121+00E	201	28	1	10	90	0.1	--
94N 121+50E	201	31	2	9	90	0.3	--
94N 122+00E	201	105	2	20	115	0.8	--
94N 122+50E	201	30	1	7	214	0.6	--
94N 123+00E	201	19	1	12	90	0.1	--
94N 123+50E	201	16	1	5	59	0.2	--
94N 124+00E	201	22	1	7	90	0.1	--
94N 124+50E	201	23	1	10	97	0.2	--
94N 125+00E	201	24	2	8	88	0.2	--
94N 125+50E	201	17	2	6	73	0.1	--
94N 126+00E	201	16	1	9	62	0.1	--
94N 126+50E	201	19	1	6	72	0.1	--
94N 127+00E	201	11	1	8	80	0.1	--
94N 127+50E	201	14	1	3	41	0.1	--
94N 128+00E	201	16	1	9	70	0.1	--
94N 128+50E	201	9	1	5	49	0.1	--
94N 129+00E	201	13	1	7	69	0.1	--
94N 129+50E	201	13	1	9	47	0.3	--
94N 130+00E	201	11	1	5	54	0.2	--
94N 130+50E	201	21	1	8	100	0.1	--
94N 131+00E	201	19	1	66	324	1.0	--
94N 131+50E	201	11	1	6	52	0.1	--
94N 132+00E	201	11	1	6	58	0.1	--
94N 132+50E	201	16	1	5	59	0.1	--
94N 133+00E	201	15	1	5	48	0.1	--
L 95N 108+50E	201	33	1	17	50	0.1	--
L 95N 109+00E	201	40	2	22	112	0.3	--
L 95N 109+50E	203	28	1	24	197	0.1	--
L 95N 110+00E	201	43	1	36	155	0.1	--
L 95N 110+50E	201	48	2	43	210	0.1	--
L 95N 111+00E	201	50	1	36	193	0.1	--
L 95N 111+50E	201	40	2	35	178	0.1	--
L 95N 112+00E	201	39	1	26	145	0.1	--
L 95N 112+50E	201	24	1	9	148	0.2	--
L 95N 113+00E	201	5	1	15	39	0.1	--
L 95N 113+50E	201	15	1	8	115	0.1	--
L 95N 114+00E	201	15	1	11	92	0.1	--
L 95N 114+50E	201	10	1	10	96	0.1	--
L 95N 115+00E	201	19	1	8	85	0.1	--
L 95N 115+50E	201	18	1	7	105	0.3	--



Certified by *Hart Bichler*



CHEMEX LABS LTD.

212 BROOKSBANK AVE.
 NORTH VANCOUVER, B.C.
 CANADA V7J 2C1
 TELEPHONE: (604) 984-0221
 TELEX: 043-52597

• ANALYTICAL CHEMISTS

• GEOCHEMISTS

• REGISTERED ASSAYERS

CERTIFICATE OF ANALYSIS

TO : HI-TEC RESOURCE MANAGEMENT LTD.,

930 BEAKINSFIELD ROAD
 NORTH VANCOUVER, B.C.
 V7R 1S9

CERT. # : A8213811-003-A
 INVOICE # : I8213811
 DATE : 13-OCT-82
 P.O. # : NONE

Sample description	Prep code	Cu ppm	Mo ppm	Pb ppm	Zn ppm	Ag ppm	
L 95N 116+00E	201	29	1	10	98	0.1	--
L 95N 116+50E	201	9	2	4	40	0.3	--
L 95N 117+00E	201	25	2	9	82	0.2	--
L 95N 117+50E	201	166	3	1500	760	3.2	--
L 95N 118+00E	201	32	3	95	410	0.1	--
L 95N 118+50E	201	10	1	8	73	0.1	--
L 95N 119+00E	201	15	1	8	92	0.1	--
L 95N 119+50E	201	13	2	6	49	0.2	--
L 95N 120+00E	201	13	2	8	58	0.3	--
L 95N 120+50E	201	30	1	10	102	0.1	--
L 95N 121+00E	201	112	1	18	207	0.6	--
L 95N 121+50E	201	35	1	33	205	0.1	--
L 95N 122+00E	201	105	3	2050	3000	1.8	--
L 95N 122+50E	201	17	2	17	70	0.1	--
L 95N 123+00E	201	23	2	11	55	0.9	--
L 95N 123+50E	201	19	1	12	54	0.6	--
L 95N 124+00E	201	19	2	9	48	0.2	--
L 95N 124+50E	201	12	1	6	48	0.1	--
L 95N 125+00E	201	14	1	6	68	0.1	--
L 95N 125+50E	201	21	1	9	78	0.1	--
L 95N 126+00E	201	16	1	7	70	0.5	--
L 95N 126+50E	201	18	1	7	60	0.1	--
L 95N 127+00E	201	13	1	6	64	0.1	--
L 95N 127+50E	201	12	1	7	62	0.1	--
L 95N 128+00E	201	9	1	18	49	0.4	--
L 95N 128+50E	201	11	1	6	68	0.1	--
L 95N 129+00E	201	14	1	12	50	0.1	--
L 95N 129+50E	201	11	2	8	48	0.1	--
L 95N 130+00E	201	12	1	9	60	0.2	--
L 95N 130+50E	201	19	1	7	80	0.1	--
L 95N 131+00E	201	16	1	64	168	0.4	--
L 95N 131+50E	201	12	3	17	92	0.1	--
L 95N 132+00E	201	13	1	12	75	0.3	--
L 95N 132+50E	201	18	1	7	90	1.0	--
L 95N 133+00E	201	10	1	5	45	0.1	--
96N 109+50E	201	43	1	44	138	0.1	--
96N 110+00E	201	65	2	79	203	0.1	--
96N 110+50E	201	50	2	50	220	0.3	--
96N 111+00E	201	50	1	46	200	0.1	--
96N 111+50E	201	65	2	69	215	0.1	--

Hart Buchler

Certified by





CHEMEX LABS LTD.

212 BROOKSBANK AVE.
NORTH VANCOUVER, B.C.
CANADA V7J 2C1

• ANALYTICAL CHEMISTS

• GEOCHEMISTS

• REGISTERED ASSAYERS

TELEPHONE: (604) 984-0221

TELEX: 043-52597

CERTIFICATE OF ANALYSIS

TO : HI-TEC RESOURCE MANAGEMENT LTD.,

930 BEAKINSFIELD ROAD
NORTH VANCOUVER, B.C.
V7R 1S9

CERT. # : A8213811-004-A

INVOICE # : 18213811

DATE : 13-OCT-82

P.G. # : NONE

Sample description	Prep code	Cu ppm	Mo ppm	Pb ppm	Zn ppm	Ag ppm	
96N 112+00E	201	50	1	45	170	0.1	--
96N 112+50E	201	42	1	35	160	0.1	--
96N 113+00E	201	35	1	23	150	0.1	--
96N 113+50E	201	26	2	16	110	0.1	--
96N 114+00E	201	26	1	60	148	0.2	--
96N 114+50E	201	50	2	24	130	0.2	--
96N 115+00E	201	47	1	94	268	1.4	--
96N 115+50E	201	61	1	34	180	0.8	--
96N 116+00E	201	44	1	153	350	2.2	--
96N 116+50E	201	32	1	12	98	0.2	--
96N 117+00E	201	47	2	15	118	0.2	--
96N 117+50E	201	19	1	7	106	0.1	--
96N 118+00E	201	28	2	7	147	0.1	--
96N 118+50E	201	17	1	31	570	0.2	--
96N 119+00E	201	18	1	5	60	0.1	--
96N 119+50E	201	17	2	7	82	0.5	--
96N 120+00E	201	14	1	5	87	0.5	--
96N 120+50E	201	13	1	8	60	0.5	--
96N 121+00E	201	46	2	54	98	2.0	--
96N 121+50E	201	26	1	13	128	0.1	--
96N 122+00E	201	16	1	13	84	0.3	--
96N 122+50E	201	33	1	23	178	0.5	--
96N 123+00E	201	17	1	8	60	0.2	--
96N 123+50E	201	37	1	7	230	0.5	--
96N 124+00E	201	15	2	6	52	0.3	--
96N 124+50E	201	17	2	7	46	0.1	--
96N 125+00E	201	72	1	11	65	0.4	--
96N 125+50E	201	16	1	7	47	0.3	--
96N 126+00E	201	68	2	10	106	0.7	--
96N 126+50E	201	15	1	13	46	0.7	--
96N 127+00E	201	27	2	7	68	0.6	--
96N 127+50E	201	17	1	10	47	0.2	--
96N 128+00E	201	15	1	6	73	0.1	--
96N 128+50E	201	24	2	75	350	1.4	--
96N 129+00E	201	28	1	8	94	0.1	--
96N 129+50E	201	15	2	25	142	0.4	--
96N 130+00E	201	8	3	13	36	0.2	--
96N 130+50E	201	17	1	7	75	0.4	--
96N 131+00E	201	8	1	5	32	0.1	--
96N 131+50E	201	16	1	29	72	0.4	--



MEMBER
CANADIAN TESTING
ASSOCIATION

Certified by *Hart Bichler*



CHEMEX LABS LTD.

212 BROOKSBANK AVE.
NORTH VANCOUVER, B.C.
CANADA V7J 2C1

• ANALYTICAL CHEMISTS

• GEOCHEMISTS

• REGISTERED ASSAYERS

TELEPHONE: (604) 984-0221

TELEX: 043-52597

CERTIFICATE OF ANALYSIS

TO : HI-TEC RESOURCE MANAGEMENT LTD.,

930 BEAKINSFIELD ROAD
NORTH VANCOUVER, B.C.
V7R 1S9

CERT. # : A8213811-005-A

INVOICE # : I8213811

DATE : 13-OCT-82

P.O. # : NONE

Sample description	Prep code	Cu ppm	Mo ppm	Pb ppm	Zn ppm	Ag ppm	
96N 132+00E	201	12	1	9	90	0.2	--
96N 132+50E	201	8	1	5	38	0.2	--
96N 133+00E	203	14	2	6	59	0.1	--
L 97N 109+50E	205	6	1	21	58	0.1	--
L 97N 110+00E	201	22	1	28	73	0.1	--
L 97N 110+50E	201	40	1	45	127	0.1	--
L 97N 111+00E	205	41	2	45	210	0.1	--
L 97N 111+50E	201	78	4	85	455	0.1	--
L 97N 112+00E	203	44	3	110	102	0.5	--
L 97N 112+50E	201	92	2	53	235	0.1	--
L 97N 113+00E	201	65	1	35	160	0.1	--
L 97N 113+50E	203	54	1	28	135	0.1	--
L 97N 114+00E	201	41	1	25	137	0.1	--
L 97N 114+50E	205	45	1	18	135	0.1	--
L 97N 115+00E	201	47	1	36	160	0.3	--
L 97N 115+50E	201	45	1	38	158	0.2	--
L 97N 116+00E	201	15	1	46	118	1.0	--
L 97N 116+50E	201	18	1	21	100	0.5	--
L 97N 117+00E	201	30	1	65	258	0.5	--
L 97N 117+50E	201	27	2	65	330	0.3	--
L 97N 118+00E	201	12	2	7	64	0.1	--
L 97N 118+50E	201	10	4	8	60	0.1	--
L 97N 119+00E	201	14	2	7	73	0.3	--
L 97N 119+50E	201	11	1	9	80	1.6	--
L 97N 120+00E	201	12	1	29	92	0.2	--
L 97N 120+50E	203	22	2	13	108	0.2	--
L 97N 121+00E	201	14	1	9	43	0.1	--
L 97N 121+50E	201	11	1	20	72	0.3	--
L 97N 122+00E	201	12	1	20	75	0.1	--
L 97N 122+50E	201	7	1	17	50	0.1	--
L 97N 123+00E	201	9	1	11	62	0.1	--
L 97N 123+50E	201	21	1	36	380	0.2	--
L 97N 124+00E	201	43	1	13	110	0.1	--
L 97N 124+50E	201	19	1	9	72	0.3	--
L 97N 125+00E	201	37	1	10	70	0.1	--
L 97N 125+50E	201	39	1	12	118	0.1	--
L 97N 126+00E	201	20	1	8	81	0.1	--
L 97N 126+50E	201	25	1	9	85	0.1	--
L 97N 127+00E	201	34	1	10	100	0.1	--
L 97N 127+50E	201	29	1	8	98	0.1	--

Hart Buchler

Certified by



MEMBER
CANADIAN TESTING
ASSOCIATION



CHEMEX LABS LTD.

212 BROOKSBANK AVE.
NORTH VANCOUVER, B.C.
CANADA V7J 2C1

• ANALYTICAL CHEMISTS

• GEOCHEMISTS

• REGISTERED ASSAYERS

TELEPHONE: (604) 984-0221
TELEX: 043-52597

CERTIFICATE OF ANALYSIS

TO : HI-TEC RESOURCE MANAGEMENT LTD.,

930 BEAKINSFIELD ROAD
NORTH VANCOUVER, B.C.
V7R 1S9

CERT. # : A8213811-006-A
INVOICE # : I8213811
DATE : 13-OCT-82
P.O. # : NONE

Sample description	Prep code	Cu ppm	Mo ppm	Pb ppm	Zn ppm	Ag ppm	
L 97N 128+00E	203	33	2	140	448	0.7	--
L 97N 128+50E	201	32	2	90	450	1.7	--
L 97N 129+00E	201	21	2	100	250	1.3	--
L 97N 129+50E	201	26	1	33	255	0.2	--
L 97N 130+00E	201	20	1	9	62	0.3	--
L 97N 130+50E	201	13	2	10	38	0.1	--
L 97N 131+00E	201	17	1	10	68	0.3	--
L 97N 131+50E	201	12	1	48	90	0.2	--
L 97N 132+00E	201	16	1	28	86	0.6	--
L 97N 132+50E	201	18	1	34	96	0.2	--
L 97N 133+00E	201	15	1	16	108	0.3	--
98+00N 110+50E	201	24	1	23	40	0.2	--
98+00N 111+00E	201	64	1	38	132	0.2	--
98+00N 111+50E	201	54	1	44	210	0.3	--
98+00N 112+00E	201	66	2	112	445	0.1	--
98+00N 112+50E	201	72	2	73	220	0.3	--
98+00N 113+00E	201	42	2	47	160	0.2	--
98+00N 113+50E	201	76	1	48	154	0.5	--
98+00N 114+00E	201	46	1	28	150	0.1	--
98+00N 114+50E	201	20	1	17	130	0.4	--
98+00N 115+00E	201	25	1	25	120	0.5	--
98+00N 115+50E	201	28	1	31	135	0.3	--
98+00N 116+00E	201	23	2	17	130	0.8	--
98+00N 116+50E	201	106	1	260	730	2.8	--
98+00N 117+00E	201	16	2	12	80	0.1	--
98+00N 117+50E	203	6	1	20	18	0.3	--
98+00N 118+00E	201	9	1	10	50	0.7	--
98+00N 118+50E	201	8	1	10	47	0.2	--
98+00N 119+00E	201	14	2	10	49	0.8	--
98+00N 119+50E	201	18	1	10	108	0.5	--
98+00N 120+00E	201	13	3	11	55	0.5	--
98+00N 120+50E	201	11	1	13	46	0.3	--
98+00N 121+00E	201	21	2	97	173	0.7	--
98+00N 121+50E	203	17	2	14	68	0.6	--
98+00N 122+00E	201	21	1	27	173	0.2	--
98+00N 122+50E	201	9	1	11	52	0.1	--
98+00N 123+00E	203	14	1	40	90	0.9	--
98+00N 123+50E	201	42	1	12	65	1.1	--
98+00N 124+00E	201	21	1	9	89	0.2	--
98+00N 124+50E	203	19	1	9	92	0.6	--



MEMBER
CANADIAN TESTING
ASSOCIATION

Certified by *Hart Bichler*



CHEMEX LABS LTD.

212 BROOKSBANK AVE.
NORTH VANCOUVER, B.C.
CANADA V7J 2C1

• ANALYTICAL CHEMISTS • GEOCHEMISTS • REGISTERED ASSAYERS

TELEPHONE: (604) 984-0221
TELEX: 043-52597

CERTIFICATE OF ANALYSIS

TO : HI-TEC RESOURCE MANAGEMENT LTD.,

930 BEAKINSFIELD ROAD
NORTH VANCOUVER, B.C.
V7R 1S9

CERT. # : A8213812-C01-A
INVOICE # : I8213812
DATE : 13-OCT-82
P.O. # : NONE

Sample description	Prep code	Cu ppm	Mo ppm	Pb ppm	Zn ppm	Ag ppm	
98+00N 125+00E	201	16	1	8	45	0.2	--
98+00N 125+50E	201	34	2	10	67	0.7	--
98+00N 126+00E	201	22	1	9	53	0.3	--
98+00N 126+50E	201	19	4	5	45	0.1	--
98+00N 127+00E	201	18	1	6	60	0.6	--
98+00N 127+50E	201	13	1	10	58	0.1	--
98+00N 128+00E	201	31	1	10	68	0.1	--
98+00N 128+50E	201	15	1	7	58	0.4	--
98+00N 129+00E	201	27	1	6	75	0.2	--
98+00N 129+50E	201	16	1	50	127	0.3	--
98+00N 130+00E	201	21	1	13	105	0.1	--
98+00N 130+50E	201	29	2	27	90	0.6	--
98+00N 131+00E	201	38	1	23	188	1.0	--
98+00N 131+50E	201	19	1	6	68	0.4	--
98+00N 132+00E	201	8	1	2	14	0.1	--
98+00N 132+50E	201	12	1	6	62	0.1	--
98+00N 133+00E	201	30	1	7	130	0.3	--
99N 108+00E	205	46	1	2100	147	0.1	--
99N 108+50E	201	174	1	54	93	0.4	--
99N 109+00E	205	35	1	14	90	0.1	--
99N 109+50E	205	72	1	16	83	0.1	--
99N 110+00E	201	138	2	43	98	0.3	--
99N 110+50E	205	32	1	71	83	0.1	--
99N 111+00E	201	32	1	58	105	0.1	--
99N 111+50E	201	48	2	34	110	0.2	--
99N 112+00E	201	44	1	40	93	0.2	--
99N 112+50E	201	46	2	40	125	0.5	--
99N 113+00E	201	32	1	23	90	0.5	--
99N 113+50E	201	47	1	16	78	3.4	--
99N 114+00E	201	17	1	9	55	0.7	--
99N 114+50E	201	61	1	30	145	0.6	--
99N 115+00E	201	22	2	30	103	0.9	--
99N 115+50E	201	54	2	108	178	0.7	--
99N 116+00E	201	29	1	25	105	0.5	--
99N 116+50E	201	5	1	3	8	0.1	--
99N 117+00E	201	9	3	8	34	0.1	--
99N 117+50E	201	19	2	18	110	0.3	--
99N 118+00E	201	18	2	7	57	0.3	--
99N 118+50E	201	19	1	10	59	0.1	--
99N 119+00E	201	17	1	5	55	0.1	--



Certified by *Hart Buchler*



CHEMEX LABS LTD.

212 BROOKSBANK AVE.
NORTH VANCOUVER, B.C.
CANADA V7J 2C1

• ANALYTICAL CHEMISTS

• GEOCHEMISTS

• REGISTERED ASSAYERS

TELEPHONE: (604) 984-0221
TELEX: 043-52597

CERTIFICATE OF ANALYSIS

TO : HI-TEC RESOURCE MANAGEMENT LTD.,

930 BEAKINSFIELD ROAD
NORTH VANCOUVER, B.C.
V7R 1S9

CERT. # : A8213812-002-A
INVOICE # : I8213812
DATE : 13-OCT-82
P.O. # : NONE

Sample description	Prep code	Cu ppm	Mo ppm	Pb ppm	Zn ppm	Ag ppm	
99N 119+50E	201	25	1	8	75	0.2	--
99N 120+00E	201	16	1	6	55	0.3	--
99N 120+50E	205	24	1	71	27	1.5	--
99N 121+00E	201	18	1	50	138	0.2	--
99N 121+50E	201	18	1	30	350	0.2	--
99N 122+00E	201	24	1	12	82	0.2	--
99N 122+50E	201	23	1	12	55	0.6	--
99N 123+00E	201	50	1	12	88	0.4	--
99N 123+50E	201	20	1	5	63	0.1	--
99N 124+00E	201	28	1	9	105	0.1	--
99N 124+50E	201	25	2	10	45	0.4	--
99N 125+00E	201	16	1	5	50	0.2	--
99N 125+50E	201	23	2	10	88	0.1	--
99N 126+00E	203	12	1	4	16	0.3	--
99N 126+50E	201	11	1	6	65	0.1	--
99N 127+00E	201	21	1	8	46	0.1	--
99N 127+50E	201	25	1	7	92	0.1	--
99N 128+00E	201	11	1	11	45	0.2	--
99N 128+50E	201	51	1	10	88	0.2	--
99N 129+00E	201	19	1	7	42	0.1	--
99N 129+50E	201	16	2	7	47	0.1	--
99N 130+00E	201	9	1	9	40	0.2	--
99N 130+50E	201	23	2	6	90	0.3	--
99N 131+00E	201	21	1	13	80	0.9	--
99N 131+50E	201	15	1	15	73	0.2	--
99N 132+00E	201	9	1	9	42	0.3	--
99N 132+50E	201	14	1	7	78	0.1	--
99N 133+00E	201	14	1	5	47	0.1	--
L 100N 108+00E	201	15	2	17	98	0.6	--
L 100N 108+50E	201	26	1	30	74	0.8	--
L 100N 109+00E	201	57	1	174	430	1.1	--
L 100N 109+50E	201	120	1	45	117	0.2	--
L 100N 110+00E	205	11	1	54	60	0.1	--
L 100N 110+50E	205	8	1	32	10	0.1	--
L 100N 111+00E	201	50	1	157	133	0.2	--
L 100N 111+50E	201	28	1	12	83	0.3	--
L 100N 112+00E	201	47	2	84	100	0.5	--
L 100N 112+50E	201	49	2	15	140	0.1	--
L 100N 113+00E	201	82	2	80	102	1.1	--
L 100N 113+50E	201	79	1	64	220	0.5	--

Hart Bichler

Certified by



MEMBER
CANADIAN TESTING
ASSOCIATION



CHEMEX LABS LTD.

212 BROOKSBANK AVE.
 NORTH VANCOUVER, B.C.
 CANADA V7J 2C1
 TELEPHONE: (604) 984-0221
 TELEX: 043-52597

• ANALYTICAL CHEMISTS

• GEOCHEMISTS

• REGISTERED ASSAYERS

CERTIFICATE OF ANALYSIS

TO : HI-TEC RESOURCE MANAGEMENT LTD.,

930 BEAKINSFIELD ROAD
 NORTH VANCOUVER, B.C.
 V7R 1S9

CERT. # : A8213812-003-A
 INVOICE # : I8213812
 DATE : 13-OCT-82
 P.O. # : NONE

Sample description	Prep code	Cu ppm	Mo ppm	Pb ppm	Zn ppm	Ag ppm	
L 100N 114+00E	201	28	2	13	83	0.6	--
L 100N 114+50E	201	72	1	71	190	0.4	--
L 100N 115+00E	201	26	1	10	98	0.2	--
L 100N 115+50E	201	31	2	23	110	2.1	--
L 100N 116+00E	201	16	1	17	52	0.6	--
L 100N 116+50E	201	21	1	60	94	0.9	--
L 100N 117+00E	201	12	1	18	65	0.2	--
L 100N 117+50E	201	24	2	8	55	0.3	--
L 100N 118+00E	201	13	1	10	47	0.5	--
L 100N 118+50E	201	32	2	22	105	0.7	--
L 100N 119+00E	201	30	1	55	130	0.7	--
L 100N 119+50E	201	16	1	8	73	0.1	--
L 100N 120+00E	201	25	1	9	95	0.4	--
L 100N 120+50E	201	23	3	16	120	0.3	--
L 100N 121+00E	201	43	2	32	148	1.3	--
L 100N 121+50E	201	20	1	8	80	0.8	--
L 100N 122+00E	201	48	1	190	310	2.4	--
L 100N 122+50E	201	20	1	15	102	0.8	--
L 100N 123+00E	201	17	1	22	75	0.3	--
L 100N 123+50E	201	15	1	7	42	0.3	--
L 100N 124+00E	201	16	1	9	62	0.1	--
L 100N 124+50E	201	26	1	6	82	0.7	--
L 100N 125+00E	201	43	1	10	108	0.4	--
L 100N 125+50E	201	26	1	16	102	0.1	--
L 100N 126+00E	201	24	1	8	98	0.3	--
L 100N 126+50E	201	17	1	10	48	0.9	--
L 100N 127+00E	201	18	1	8	62	1.7	--
L 100N 127+50E	201	37	1	10	42	0.3	--
L 100N 128+00E	201	19	1	10	57	0.2	--
L 100N 128+50E	201	15	1	7	57	0.6	--
L 100N 129+00E	201	14	1	7	42	0.3	--
L 100N 129+50E	201	16	1	7	51	0.2	--
L 100N 130+00E	201	27	1	5	55	0.4	--
L 100N 130+50E	201	17	2	6	52	0.4	--
L 100N 131+00E	201	29	2	7	105	0.8	--
L 100N 131+50E	201	10	1	44	23	0.1	--
L 100N 132+00E	201	19	1	8	27	0.2	--
L 100N 132+50E	201	16	1	22	63	0.1	--
L 100N 133+00E	201	14	2	6	63	1.1	--
102+00N 100+00E	201	550	22	7	98	0.7	--



MEMBER
 CANADIAN TESTING
 ASSOCIATION

Certified by *Hart Bichler*



CHEMEX LABS LTD.

212 BROOKSBANK AVE.
 NORTH VANCOUVER, B.C.
 CANADA V7J 2C1
 TELEPHONE: (604) 984-0221
 TELEX: 043-52597

• ANALYTICAL CHEMISTS

• GEOCHEMISTS

• REGISTERED ASSAYERS

CERTIFICATE OF ANALYSIS

TO : HI-TEC RESOURCE MANAGEMENT LTD.,

930 BEAKINSFIELD ROAD
 NORTH VANCOUVER, B.C.
 V7R 1S9

CERT. # : A8213812-004-A
 INVOICE # : I8213812
 DATE : 13-OCT-82
 P.O. # : NONE

Sample description	Prep code	Cu ppm	Mo ppm	Pb ppm	Zn ppm	Ag ppm	
102+00N 100+50E	201	62	8	20	120	0.5	--
102+00N 101+00E	201	52	9	14	84	0.7	--
102+00N 101+50E	201	101	5	25	175	0.4	--
102+00N 102+00E	201	1500	26	34	125	0.5	--
102+00N 102+50E	201	58	2	14	130	0.7	--
102+00N 103+00E	201	30	2	16	109	0.7	--
102+00N 103+50E	201	47	7	15	103	0.5	--
102+00N 104+00E	201	25	10	18	98	1.0	--
102+00N 104+50E	201	21	2	11	65	0.2	--
102+00N 105+00E	201	33	3	13	74	0.8	--
102+00N 105+50E	201	39	6	23	103	0.5	--
102+00N 106+00E	201	13	1	13	28	0.5	--
102+00N 106+50E	201	25	2	23	79	1.0	--
102+00N 107+00E	201	48	2	47	200	1.2	--
102+00N 107+50E	201	100	2	82	240	1.2	--
102+00N 108+00E	201	21	1	53	148	1.9	--
103+00N 100+00E	201	220	8	23	140	0.7	--
103+00N 100+50E	201	400	9	30	145	0.8	--
103+00N 101+00E	201	285	5	9	144	0.4	--
103+00N 101+50E	201	168	6	28	100	0.1	--
103+00N 102+00E	201	800	2	10	128	0.6	--
103+00N 102+50E	201	650	4	16	140	0.4	--
103+00N 103+00E	201	290	12	28	180	0.7	--
103+00N 103+50E	201	49	7	18	125	0.5	--
103+00N 104+00E	201	21	2	9	77	0.5	--
103+00N 104+50E	201	32	3	15	76	0.6	--
103+00N 105+00E	201	151	6	21	125	0.4	--
103+00N 105+50E	201	134	25	12	132	0.8	--
103+00N 106+00E	201	85	7	42	97	2.4	--
103+00N 106+50E	201	21	10	26	44	2.9	--
103+00N 107+00E	201	56	13	22	112	1.5	--
103+00N 107+50E	201	14	9	27	56	0.7	--
103+00N 108+00E	201	63	1	119	470	0.6	--
104+00N 100+00E	201	275	5	45	150	0.8	--
104+00N 100+50E	201	550	6	22	160	0.4	--
104+00N 101+00E	201	38	1	19	112	0.6	--
104+00N 101+50E	201	60	2	26	99	0.6	--
104+00N 102+00E	201	57	1	25	138	0.4	--
104+00N 102+50E	201	550	47	21	67	0.1	--
104+00N 103+00E	201	49	7	18	457	0.8	--



MEMBER
 CANADIAN TESTING
 ASSOCIATION

Certified by *Hart Bichler*



CHEMEX LABS LTD.

212 BROOKSBANK AVE.
 NORTH VANCOUVER, B.C.
 CANADA V7J 2C1
 TELEPHONE: (604) 984-0221
 TELEX: 043-52597

• ANALYTICAL CHEMISTS • GEOCHEMISTS • REGISTERED ASSAYERS

CERTIFICATE OF ANALYSIS

TO : HI-TEC RESOURCE MANAGEMENT LTD.,

930 BEAKINSFIELD ROAD
 NORTH VANCOUVER, B.C.
 V7R 1S9

CERT. # : A8213812-C05-A
 INVOICE # : I8213812
 DATE : 13-OCT-82
 P.O. # : NONE

Sample description	Prep code	Cu ppm	Mo ppm	Pb ppm	Zn ppm	Ag ppm	
104+00N 103+50E	201	46	1	26	150	0.3	--
104+00N 104+00E	201	265	15	30	120	1.0	--
104+00N 104+50E	201	210	15	50	90	0.7	--
104+00N 105+00E	201	34	3	10	62	0.4	--
104+00N 105+50E	201	315	36	31	145	0.5	--
104+00N 106+00E	201	132	6	14	79	0.8	--
104+00N 106+50E	201	26	3	7	72	0.3	--
104+00N 107+00E	201	51	10	33	77	0.3	--
104+00N 107+50E	201	68	2	21	117	1.6	--
104+00N 108+00E	201	50	1	35	210	0.6	--
105N 100+00E	201	28	1	16	86	0.2	--
105N 100+50E	201	33	9	18	128	0.6	--
105N 101+00E	201	54	2	21	125	0.1	--
105N 101+50E	201	44	1	17	110	0.1	--
105N 102+00E	201	375	5	19	140	0.2	--
105N 102+50E	201	460	2	62	300	0.1	--
105N 103+00E	201	550	14	45	165	1.9	--
105N 103+50E	201	260	260	142	106	1.2	--
105N 104+00E	201	510	170	60	150	0.4	--
105N 104+50E	201	71	13	15	93	1.7	--
105N 105+00E	201	28	3	9	80	0.4	--
105N 105+50E	201	58	2	25	155	0.6	--
105N 106+00E	201	81	17	25	140	0.4	--
105N 106+50E	201	65	17	23	140	0.5	--
105N 107+00E	201	27	3	8	70	0.3	--
105N 107+50E	201	132	4	17	81	0.6	--
105N 108+00E	201	17	2	16	75	0.6	--
106N 100+00E	201	41	1	25	135	0.9	--
106N 100+50E	201	60	3	28	135	0.2	--
106N 101+00E	201	26	5	15	115	0.1	--
106N 101+50E	201	44	1	19	106	0.1	--
106N 102+00E	201	116	4	21	125	0.4	--
106N 102+50E	201	41	1	16	85	0.7	--
106N 103+00E	201	25	1	20	110	0.2	--
106N 103+50E	201	43	9	19	120	0.5	--
106N 104+00E	201	91	20	23	73	0.7	--
106N 104+50E	201	390	25	44	170	1.0	--
106N 105+00E	201	111	8	44	130	0.6	--
106N 105+50E	201	51	1	23	130	0.3	--
106N 106+00E	201	55	2	29	180	0.4	--



Certified by *Hart Buchler*



CHEMEX LABS LTD.

212 BROOKSBANK AVE.
NORTH VANCOUVER, B.C.
CANADA V7J 2C1

• ANALYTICAL CHEMISTS

• GEOCHEMISTS

• REGISTERED ASSAYERS

TELEPHONE: (604) 984-0221
TELEX: 043-52597

CERTIFICATE OF ANALYSIS

TO : HI-TEC RESOURCE MANAGEMENT LTD.,

930 BEAKINSFIELD ROAD
NORTH VANCOUVER, B.C.
V7R 1S9

CERT. # : A8213812-006-A
INVOICE # : 18213812
DATE : 13-OCT-82
P.O. # : NONE

Sample description	Prep code	Cu ppm	Mo ppm	Pb ppm	Zn ppm	Ag ppm	
106N 106+50E	201	23	2	12	93	0.7	--
106N 107+00E	201	25	2	19	115	0.6	--
106N 107+50E	201	46	2	22	120	0.3	--
106N 108+00E	201	180	9	75	120	0.8	--
106N 108+50E	203	74	9	48	90	0.1	--
106N 109+00E	205	147	4	34	150	0.2	--
106N 109+50E	201	29	13	18	130	1.0	--
106N 110+00E	201	34	21	17	165	2.8	--
106N 110+50E	201	22	2	22	97	0.7	--
107N 100+00E	201	57	2	20	135	0.2	--
107N 100+50E	201	34	1	11	57	0.4	--
107N 101+00E	203	116	1	39	210	0.3	--
107N 101+50E	201	66	4	23	142	0.4	--
107N 102+00E	201	34	2	22	132	0.5	--
107N 102+50E	201	31	3	18	120	0.7	--
107N 103+00E	201	37	1	23	112	0.4	--
107N 103+50E	201	65	1	15	98	0.2	--
107N 104+00E	201	280	20	47	104	0.2	--
107N 104+50E	201	179	20	21	99	0.7	--
107N 105+00E	201	176	14	53	155	0.4	--
107N 105+50E	201	750	12	130	220	0.7	--
107N 106+00E	201	76	4	22	155	1.6	--
107N 106+50E	201	23	2	14	60	0.5	--
107N 107+00E	203	18	1	16	76	0.2	--
107N 107+50E	201	36	1	18	105	0.6	--
107N 108+00E A	201	58	3	17	79	0.4	--
107N 108+00E B	201	74	5	23	87	0.3	--
107N 108+50E	201	31	2	13	80	0.6	--
107N 109+00E	201	17	1	11	74	1.0	--
107N 109+50E	201	41	15	14	100	0.7	--
107N 110+00E	201	86	17	22	155	0.1	--
107N 110+50E	201	99	7	23	85	0.5	--
108N 100+00E	201	55	1	23	155	0.2	--
108N 100+50E	201	68	2	32	180	0.2	--
108N 101+00E	201	78	1	33	230	0.3	--
108N 101+50E	201	55	1	27	140	0.4	--
108N 102+00E	201	84	1	27	125	0.2	--
108N 102+50E	201	84	1	34	150	0.3	--
108N 103+00E	201	58	1	23	170	0.2	--
108N 103+50E	201	55	1	12	181	0.2	--

Hart Buchler

Certified by



MEMBER
CANADIAN TESTING
ASSOCIATION



CHEMEX LABS LTD.

212 BROOKSBANK AVE.
NORTH VANCOUVER, B.C.
CANADA V7J 2C1

• ANALYTICAL CHEMISTS

• GEOCHEMISTS

• REGISTERED ASSAYERS

TELEPHONE: (604) 984-0221
TELEX: 043-52597

CERTIFICATE OF ANALYSIS

TO : HI-TEC RESOURCE MANAGEMENT LTD.,

930 BEAKINSFIELD ROAD
NORTH VANCOUVER, B.C.
V7R 1S9

CERT. # : A8213813-001-A
INVOICE # : I8213813
DATE : 13-OCT-82
P.O. # : NONE

N

Sample description	Prep code	Cu ppm	Mo ppm	Pb ppm	Zn ppm	Ag ppm	
108N 104+00E	201	750	18	55	70	0.7	--
108N 104+50E	201	61	1	15	97	0.5	--
108N 105+00E	201	46	3	32	80	0.4	--
108N 105+50E	201	285	13	33	125	0.2	--
108N 106+00E	201	3300	22	22	115	3.8	--
108N 106+50E	201	78	5	15	91	1.0	--
108N 107+00E	201	385	15	18	135	0.9	--
108N 107+50E	201	29	3	18	78	0.6	--
108N 108+00E	201	34	4	17	86	0.8	--
108N 108+50E	201	166	7	35	120	0.3	--
108N 109+00E	201	26	3	11	70	0.4	--
108N 109+50E	201	25	1	12	48	0.9	--
108N 110+00E	201	145	5	12	66	0.6	--
108N 110+50E	203	29	5	6	46	0.3	--
109N 100+00E	201	14	1	15	35	0.5	--
109N 100+50E	201	15	1	12	62	0.2	--
109N 102+00E	201	31	1	10	140	0.4	--
109N 102+50E	201	129	2	25	110	0.3	--
109N 103+00E	201	51	1	26	65	0.1	--
109N 103+50E	201	18	1	15	27	0.1	--
109N 104+00E	201	79	2	28	85	0.3	--
109N 104+50E	205	80	1	3	50	0.2	--
109N 105+00E	201	27	1	9	65	0.2	--
109N 105+50E	201	900	13	17	110	0.3	--
109N 106+00E	201	1350	25	40	86	0.4	--
109N 106+50E	201	2100	73	16	61	0.7	--
109N 107+00E	201	111	4	22	82	0.1	--
109N 107+50E	201	56	1	20	125	0.2	--
109N 108+00E	201	24	1	10	60	0.7	--
109N 108+50E	201	18	2	9	47	0.4	--
109N 109+00E	201	38	2	29	102	0.9	--
109N 109+50E	201	425	8	13	72	0.5	--
109N 110+00E	201	141	7	23	60	0.3	--
109N 110+50E	201	134	7	43	70	0.3	--
110+00N 100+00E	201	24	1	12	75	0.1	--
110+00N 100+50E	201	26	1	16	95	0.1	--
110+00N 101+00E	201	36	2	17	98	0.2	--
110+00N 101+50E	201	25	2	14	51	0.1	--
110+00N 102+00E	201	42	1	18	45	0.3	--
110+00N 102+50E	201	20	1	14	64	0.1	--

Hart Buchler

Certified by



MEMBER
CANADIAN TESTING
ASSOCIATION



CHEMEX LABS LTD.

212 BROOKSBANK AVE.
 NORTH VANCOUVER, B.C.
 CANADA V7J 2C1
 TELEPHONE: (604) 984-0221
 TELEX: 043-52597

• ANALYTICAL CHEMISTS • GEOCHEMISTS • REGISTERED ASSAYERS

CERTIFICATE OF ANALYSIS

TO : HI-TEC RESOURCE MANAGEMENT LTD.,

930 BEAKINSFIELD ROAD
 NORTH VANCOUVER, B.C.
 V7R 1S9

CERT. # : A8213813-002-A
 INVOICE # : 18213813
 DATE : 13-OCT-82
 P.O. # : NONE

N

Sample description	Prep code	Cu ppm	Mo ppm	Pb ppm	Zn ppm	Ag ppm	
110+00N 103+00E	201	34	2	18	84	0.4	--
110+00N 103+50E	201	21	1	12	80	0.4	--
110+00N 104+00E	201	21	2	12	58	0.3	--
110+00N 104+50E	201	33	1	10	80	0.3	--
110+00N 105+00E	201	34	1	7	67	0.1	--
110+00N 105+50E	201	47	1	12	83	0.3	--
110+00N 106+00E	201	70	3	26	90	0.2	--
110+00N 106+50E	201	45	8	11	75	0.4	--
110+00N 107+00E	201	71	10	18	74	0.4	--
110+00N 107+50E	201	37	2	9	80	0.1	--
110+00N 108+00E	201	30	1	9	56	0.2	--
110+00N 108+50E	201	82	7	13	55	0.4	--
110+00N 109+00E	201	34	2	16	100	1.0	--
110+00N 109+50E	201	32	1	16	95	0.9	--
110+00N 110+00E	201	13	1	1	28	0.3	--
110+00N 110+50E	203	12	1	1	19	0.8	--
111N 100+00E	201	48	1	24	155	0.3	--
111N 100+50E	201	53	1	35	210	0.3	--
111N 101+00E	201	32	1	18	93	0.4	--
111N 101+50E	201	72	1	17	106	0.2	--
111N 102+00E	201	11	1	13	42	0.2	--
111N 102+50E	201	51	1	36	180	0.1	--
111N 103+00E	201	11	1	8	50	0.3	--
111N 103+50E	201	19	2	10	78	0.7	--
111N 104+00E	201	17	1	8	70	0.5	--
111N 104+50E	201	19	2	8	67	0.2	--
111N 105+00E	201	26	1	9	65	0.3	--
111N 105+50E	201	25	1	13	48	0.2	--
111N 106+00E	201	55	3	10	74	0.1	--
111N 106+50E	201	115	4	22	95	0.5	--
111N 107+00E	201	550	8	26	105	0.3	--
111N 107+50E	201	500	13	16	93	0.1	--
111N 108+00E	201	49	3	12	91	0.8	--
111N 108+50E	201	370	12	66	105	0.4	--
111N 109+00E	201	350	8	26	135	3.8	--
111N 109+50E	201	28	1	11	68	0.5	--
111N 110+00E	201	39	2	12	85	0.3	--
111N 110+50E	201	22	1	10	55	0.4	--
112N 100+00E	201	22	2	12	68	0.3	--
112N 100+50E	201	37	2	17	100	0.3	--



Certified by *Hart Bichler*



CHEMEX LABS LTD.

212 BROOKSBANK AVE.
NORTH VANCOUVER, B.C.
CANADA V7J 2C1

• ANALYTICAL CHEMISTS

• GEOCHEMISTS

• REGISTERED ASSAYERS

TELEPHONE: (604) 984-0221
TELEX: 043-52597

CERTIFICATE OF ANALYSIS

TO : HI-TEC RESOURCE MANAGEMENT LTD.,

930 BEAKINSFIELD ROAD
NORTH VANCOUVER, B.C.
V7R 1S9

CERT. # : A8213813-003-A
INVOICE # : I8213813
DATE : 13-OCT-82
P.O. # : NONE

N

Sample description	Prep code	Cu ppm	Mo ppm	Pb ppm	Zn ppm	Ag ppm	
112N 101+00E	201	50	3	19	91	0.1	--
112N 101+50E	201	31	2	14	98	0.2	--
112N 102+00E	201	22	1	9	69	0.1	--
112N 102+50E	201	50	3	33	120	0.3	--
112N 103+00E	201	19	2	7	107	0.3	--
112N 103+50E	201	26	1	11	90	0.1	--
112N 104+00E	201	15	3	6	56	0.4	--
112N 104+50E	201	15	2	13	55	0.2	--
112N 105+00E	201	32	1	10	102	0.1	--
112N 105+50E	201	95	2	20	104	0.1	--
112N 106+00E	201	35	2	11	82	0.2	--
112N 106+50E	201	52	3	11	83	0.3	--
112N 107+00E	201	56	13	142	37	0.3	--
112N 107+50E	201	510	5	38	115	0.3	--
112N 108+50E	201	42	2	14	108	0.5	--
112N 109+00E	201	45	2	14	128	1.0	--
112N 109+50E	201	30	1	12	90	1.2	--
112N 110+00E	201	215	1	4	45	0.8	--
112N 110+50E	201	27	1	13	67	0.6	--
112N 111+00E	201	72	2	12	69	0.8	--
112N 111+50E	201	21	2	8	50	0.3	--
112N 112+00E	201	23	1	8	59	0.3	--
112N 112+50E	201	35	2	14	100	0.2	--
112N 113+00E	201	18	2	9	64	0.2	--
112N 113+50E	201	15	1	10	44	0.3	--
112N 114+00E	201	29	1	11	82	0.4	--
112N 114+50E	201	80	2	10	97	0.5	--
112N 115+00E	201	29	1	11	64	0.7	--
112N 116+00E	201	28	2	13	65	0.8	--
112N 116+50E	201	16	2	11	73	0.5	--
113N 100+00E	201	17	1	8	68	0.5	--
113N 100+50E	201	50	2	22	140	0.8	--
113N 101+00E	201	15	1	6	56	0.2	--
113N 101+50E	201	44	1	14	120	0.2	--
113N 102+00E	201	34	1	12	100	0.4	--
113N 102+50E	201	38	1	12	97	0.5	--
113N 103+00E	201	22	1	6	64	0.5	--
113N 103+50E	201	11	1	6	43	0.3	--
113N 104+00E	201	74	1	32	115	0.2	--
113N 104+50E	201	27	1	6	61	0.2	--



Certified by *John T. Richler*.....



CHEMEX LABS LTD.

212 BROOKSBANK AVE.
NORTH VANCOUVER, B.C.
CANADA V7J 2C1

• ANALYTICAL CHEMISTS

• GEOCHEMISTS

• REGISTERED ASSAYERS

TELEPHONE: (604) 984-0221
TELEX: 043-52597

CERTIFICATE OF ANALYSIS

TO : HI-TEC RESOURCE MANAGEMENT LTD.,

930 BEAKINSFIELD ROAD
NORTH VANCOUVER, B.C.
V7R 1S9

CERT. # : A8213813-004-A
INV. # : I8213813
DATE : 13-OCT-82
P.C. # : NONE

N

Sample description	Prep code	Cu ppm	Mo ppm	Pb ppm	Zn ppm	Ag ppm	
113N 105+00E	201	169	1	30	150	0.2	--
113N 105+50E	201	18	1	5	56	0.4	--
113N 106+00E	201	25	3	9	70	0.3	--
113N 106+50E	201	18	2	9	65	0.2	--
113N 107+00E	201	43	1	8	95	0.2	--
113N 107+50E	201	188	2	19	97	0.3	--
113N 108+00E A	201	72	1	14	109	0.5	--
113N 108+00E B	201	78	2	19	104	0.6	--
113N 108+50E	201	34	1	16	71	0.5	--
113N 109+00E	201	40	2	6	87	0.4	--
113N 109+50E	201	23	1	9	71	0.7	--
113N 110+00E	201	43	1	16	86	0.8	--
113N 110+50E	201	26	1	10	53	0.2	--
113N 111+00E	201	11	1	5	55	0.6	--
113N 111+50E	201	23	1	26	91	0.7	--
113N 112+00E	201	30	1	7	75	0.8	--
113N 112+50E	201	24	1	8	58	0.8	--
113N 113+00E	201	21	1	7	55	0.5	--
113N 113+50E	201	36	1	21	110	0.5	--
113N 114+00E	201	11	1	17	43	0.4	--
113N 114+50E	201	23	1	8	82	0.2	--
113N 115+00E	201	25	3	8	68	0.4	--
113N 115+50E	201	13	2	9	42	0.3	--
113N 116+00E	201	20	1	11	75	0.4	--
113N 116+50E	201	17	2	13	66	0.5	--
113N 117+00E	201	12	1	9	42	0.3	--
114+00N 103+00E	201	10	1	5	32	0.2	--
114+00N 103+50E	201	55	2	18	110	0.2	--
114+00N 104+00E	201	23	1	8	53	0.2	--
114+00N 104+50E	201	17	2	3	78	0.6	--
114+00N 105+00E	201	11	1	6	79	0.4	--
114+00N 105+50E	201	19	2	7	89	0.3	--
114+00N 106+00E	201	27	1	8	87	0.3	--
114+00N 106+50E	201	32	3	10	82	0.3	--
114+00N 107+00E	201	174	2	18	150	0.4	--
114+00N 107+50E	201	108	3	16	130	0.3	--
114+00N 108+00E	201	33	1	5	80	0.3	--
114+00N 108+50E	201	81	2	26	106	0.5	--
114+00N 109+00E	201	51	2	15	103	0.4	--
114+00N 109+50E	201	37	1	10	110	0.2	--

Hart Bichler

Certified by



MEMBER
CANADIAN TESTING
ASSOCIATION



CHEMEX LABS LTD.

212 BROOKSBANK AVE.
NORTH VANCOUVER, B.C.
CANADA V7J 2C1

• ANALYTICAL CHEMISTS

• GEOCHEMISTS

• REGISTERED ASSAYERS

TELEPHONE: (604) 984-0221
TELEX: 043-52597

CERTIFICATE OF ANALYSIS

TO : HI-TEC RESOURCE MANAGEMENT LTD.,

930 BEAKINSFIELD ROAD
NORTH VANCOUVER, B.C.
V7R 1S9

CERT. # : A8213813-005-A
INVOICE # : I8213813
DATE : 13-OCT-82
P.O. # : NONE

N

Sample description	Prep code	Cu ppm	Mo ppm	Pb ppm	Zn ppm	Ag ppm	
114+00N 110+00E	201	35	2	13	90	0.6	--
114+00N 110+50E	201	27	1	11	80	0.8	--
114+00N 111+00E	201	65	1	48	135	0.2	--
114+00N 111+50E	201	39	3	10	190	0.4	--
114+00N 112+00E	201	21	2	10	120	0.5	--
114+00N 112+50E	201	31	2	8	94	0.3	--
114+00N 113+00E	201	31	1	52	84	0.6	--
114+00N 113+50E	201	25	1	36	78	0.1	--
114+00N 114+00E	201	14	2	8	60	0.4	--
114+00N 114+50E	201	22	1	14	83	0.3	--
114+00N 115+00E	201	17	2	10	52	0.5	--
114+00N 115+50E	201	71	4	35	100	0.9	--
114+00N 116+00E	201	27	1	13	48	0.1	--
114+00N 116+50E	201	81	2	14	145	0.1	--
114+00N 117+00E	201	34	3	10	88	0.5	--
115+00N 103+00E	201	59	2	21	235	0.7	--
115+00N 103+50E	201	20	1	8	56	0.5	--
115+00N 104+00E	201	17	2	10	60	0.2	--
115+00N 104+50E	201	33	1	11	145	0.3	--
115+00N 105+00E	201	35	1	13	98	0.3	--
115+00N 105+50E	201	73	5	11	79	0.3	--
115+00N 106+00E	201	12	2	9	52	0.5	--
115+00N 106+50E	201	18	1	8	55	1.0	--
115+00N 107+00E	201	13	1	5	34	0.3	--
115+00N 107+50E	201	14	1	6	70	0.4	--
115+00N 108+00E	201	70	1	8	84	0.1	--
115+00N 108+50E	201	22	1	8	69	0.2	--
115+00N 109+00E	201	29	1	10	100	0.6	--
115+00N 109+50E	201	60	1	25	150	0.4	--
115+00N 110+00E	201	74	2	21	160	0.7	--
115+00N 110+50E	201	45	1	13	120	0.3	--
115+00N 111+00E	201	27	1	15	95	0.1	--
115+00N 111+50E	201	55	2	17	135	0.5	--
115+00N 112+00E	201	52	1	17	105	0.8	--
115+00N 112+50E	201	65	3	23	180	1.3	--
115+00N 113+00E	201	34	2	9	135	1.0	--
115+00N 113+50E	201	36	2	14	130	0.9	--
115+00N 114+00E	201	39	1	12	96	1.0	--
115+00N 114+50E	201	37	1	8	72	2.8	--
115+00N 115+00E	201	18	2	6	52	0.2	--



MEMBER
CANADIAN TESTING
ASSOCIATION

Certified by *Hart Bichler*



CHEMEX LABS LTD.

212 BROOKSBANK AVE.
NORTH VANCOUVER, B.C.
CANADA V7J 2C1

• ANALYTICAL CHEMISTS

• GEOCHEMISTS

• REGISTERED ASSAYERS

TELEPHONE: (604) 984-0221

TELEX: 043-52597

CERTIFICATE OF ANALYSIS

TO : HI-TEC RESOURCE MANAGEMENT LTD.,

930 BEAKINSFIELD ROAD
NORTH VANCOUVER, B.C.
V7R 1S9

CERT. # : A8213813-006-A

INVOICE # : 18213813

DATE : 13-OCT-82

P.O. # : NONE

N

Sample description	Prep code	Cu ppm	Mo ppm	Pb ppm	Zn ppm	Ag ppm	
115+00N 115+50E	201	28	2	13	59	0.6	--
115+00N 116+00E	201	29	2	11	59	0.7	--
115+00N 116+50E	201	11	1	9	35	0.3	--
115+00N 117+00E	201	27	1	16	120	0.3	--
116N 103+00E	201	44	2	12	55	0.5	--
116N 103+50E	201	8	2	18	27	0.2	--
116N 104+00E	201	79	1	27	75	0.2	--
116N 104+50E	201	33	2	22	155	0.6	--
116N 105+00E	201	12	8	11	30	0.2	--
116N 105+50E	201	19	2	1	55	0.1	--
116N 106+00E	201	19	2	6	60	0.6	--
116N 106+50E	201	12	1	8	60	0.3	--
116N 107+00E	201	53	1	22	140	0.2	--
116N 107+50E	201	47	1	12	105	0.2	--
116N 108+00E	201	45	1	13	98	0.4	--
116N 108+50E	201	84	2	21	140	0.6	--
116N 109+00E	201	71	2	30	175	0.3	--
116N 109+50E	201	56	1	20	130	0.2	--
116N 110+00E	201	10	2	7	53	0.5	--
116N 110+50E	201	16	2	7	83	0.3	--
116N 111+00E	201	43	2	11	100	0.4	--
116N 111+50E	201	32	1	13	125	0.5	--
116N 112+00E	201	36	1	20	135	0.6	--
116N 112+50E	201	35	2	18	145	1.5	--
116N 113+00E	201	21	1	15	125	0.5	--
116N 113+50E	201	22	1	9	100	0.8	--
116N 114+00E	201	21	2	6	47	1.0	--
116N 114+50E	201	25	2	10	60	0.5	--
116N 115+00E	201	21	2	7	37	0.8	--
116N 115+50E	205	22	1	7	63	0.9	--
116N 116+00E	201	21	1	9	88	0.5	--
116N 116+50E	201	23	1	15	60	0.7	--
116N 117+00E	201	28	1	7	115	0.8	--
117N 103+00E	203	16	1	5	82	0.2	--
117N 103+50E	201	44	1	14	100	0.1	--
117N 104+00E	205	24	1	6	85	0.1	--
117N 104+50E	205	136	2	12	135	0.3	--
117N 105+00E	201	133	2	18	205	0.9	--
117N 105+50E	201	106	1	23	130	0.7	--
117N 106+00E	205	39	2	8	165	0.4	--



Certified by *Hart Bichler*



CHEMEX LABS LTD.

212 BROOKSBANK AVE.
NORTH VANCOUVER, B.C.
CANADA V7J 2C1

• ANALYTICAL CHEMISTS

• GEOCHEMISTS

• REGISTERED ASSAYERS

TELEPHONE: (604) 984-0221

TELEX: 043-52597

CERTIFICATE OF ANALYSIS

TO : HI-TEC RESOURCE MANAGEMENT LTD.,

930 BEAKINSFIELD ROAD
NORTH VANCOUVER, B.C.
V7R 1S9

CERT. # : A8213814-001-A

INVOICE # : I8213814

DATE : 13-OCT-82

P.O. # : NONE

Sample description	Prep code	Cu ppm	Mo ppm	Pb ppm	Zn ppm	Ag ppm	
117N 106+50E	201	74	1	27	120	0.4	--
117N 107+00E	201	69	1	20	140	0.4	--
117N 107+50E	201	76	2	20	130	0.3	--
117N 108+00E	203	50	2	13	130	0.5	--
117N 108+50E	201	38	1	3	98	0.3	--
117N 109+00E	201	127	2	15	125	0.6	--
117N 109+50E	201	56	1	15	110	0.3	--
117N 110+00E	201	26	1	12	95	0.6	--
117N 110+50E	201	7	1	8	43	0.7	--
117N 111+00E	201	18	1	6	89	0.3	--
117N 111+50E	201	25	2	12	92	0.6	--
117N 112+00E	201	36	2	16	35	0.4	--
117N 112+50E	201	35	1	18	250	0.6	--
117N 113+00E	201	24	3	12	120	0.2	--
117N 113+50E	201	22	3	26	260	0.4	--
117N 114+00E	201	30	1	30	140	1.0	--
117N 114+50E	201	24	2	16	112	0.6	--
117N 115+00E	201	11	1	5	32	0.4	--
117N 115+50E	201	12	1	9	66	0.5	--
117N 116+00E	201	23	1	6	73	0.5	--
117N 116+50E	201	15	3	6	70	0.7	--
117N 117+00E	201	8	1	10	145	1.2	--
118N 103+00E	201	48	1	16	100	0.5	--
118N 103+50E	203	44	2	4	70	0.5	--
118N 104+00E	201	21	4	24	130	0.4	--
118N 104+50E	201	22	5	10	100	0.4	--
118N 105+00E	201	17	3	17	40	0.7	--
118N 105+50E	201	28	2	10	67	0.1	--
118N 106+00E	201	55	3	18	170	0.3	--
118N 106+50E	201	73	2	23	170	0.4	--
118N 107+00E	201	26	1	9	67	0.6	--
118N 107+50E	203	335	2	8	21	0.7	--
118N 108+00E	201	180	2	31	140	0.2	--
118N 108+50E	201	79	1	25	145	0.5	--
118N 109+00E	201	33	1	8	82	0.2	--
118N 109+50E	201	23	1	10	65	0.2	--
118N 110+00E	201	52	2	16	45	0.1	--
118N 110+50E	201	5	1	14	29	0.1	--
118N 111+00E	201	16	2	7	56	0.6	--
118N 111+50E	201	23	1	7	69	0.6	--



MEMBER
CANADIAN TESTING
ASSOCIATION

Certified by *Hart Bichler*



CHEMEX LABS LTD.

212 BROOKSBANK AVE.
NORTH VANCOUVER, B.C.
CANADA V7J 2C1

• ANALYTICAL CHEMISTS

• GEOCHEMISTS

• REGISTERED ASSAYERS

TELEPHONE: (604) 984-0221
TELEX: 043-52597

CERTIFICATE OF ANALYSIS

TO : HI-TEC RESOURCE MANAGEMENT LTD.,

930 BEAKINSFIELD ROAD
NORTH VANCOUVER, B.C.
V7R 1S9

CERT. # : A8213814-002-A

INVOICE # : I8213814

DATE : 13-OCT-82

P.O. # : NONE

Sample description	Prep code	Cu ppm	Mo ppm	Pb ppm	Zn ppm	Ag ppm	
118N 112+00E	201	29	1	21	140	0.1	--
118N 112+50E	201	25	2	11	79	0.4	--
118N 113+00E	201	20	1	8	80	0.3	--
118N 113+50E	201	24	3	12	130	0.2	--
118N 114+00E	201	39	1	12	130	0.4	--
118N 114+50E	201	25	2	8	106	0.4	--
118N 115+00E	201	11	1	6	70	0.5	--
118N 115+50E	201	18	4	3	35	0.4	--
118N 116+00E	201	29	2	21	63	1.8	--
118N 116+50E	201	21	2	7	92	0.4	--
118N 117+00E	201	41	3	17	95	1.1	--
119+00N 103+00E	201	22	7	13	100	0.2	--
119+00N 103+50E	201	41	2	18	140	0.1	--
119+00N 104+00E	201	46	3	16	128	1.0	--
119+00N 104+50E	201	79	1	36	128	0.2	--
119+00N 105+00E	201	72	1	37	175	0.1	--
119+00N 105+50E	201	81	1	40	120	0.2	--
119+00N 106+00E	201	12	1	10	39	0.1	--
119+00N 106+50E	201	20	2	5	62	0.3	--
119+00N 107+00E	201	30	1	6	70	0.3	--
119+00N 107+50E	201	22	2	17	75	0.1	--
119+00N 108+00E	201	20	1	14	68	0.4	--
119+00N 108+50E	201	45	1	14	125	0.2	--
119+00N 109+00E	201	46	1	14	125	0.1	--
119+00N 109+50E	201	30	1	11	92	0.4	--
119+00N 110+00E	201	7	1	7	42	0.2	--
119+00N 110+50E	201	35	1	8	87	0.1	--
119+00N 111+00E	201	72	1	38	165	0.6	--
119+00N 111+50E	201	56	1	23	155	0.4	--
119+00N 112+00E	201	32	1	12	115	0.4	--
119+00N 112+50E	201	13	1	10	90	0.2	--
119+00N 113+00E	201	22	1	6	63	0.4	--
119+00N 113+50E	201	25	1	7	106	0.5	--
119+00N 114+00E	201	25	2	8	80	0.8	--
119+00N 114+50E	201	17	1	5	96	0.1	--
119+00N 115+00E	201	15	1	10	72	0.1	--
119+00N 115+50E	201	10	1	6	28	0.1	--
119+00N 116+00E	201	4	2	8	61	0.1	--
119+00N 116+50E	201	31	1	7	91	0.2	--
119+00N 117+00E	201	12	1	11	47	0.7	--



Certified by *Hart Bichler*



CHEMEX LABS LTD.

212 BROOKSBANK AVE.
NORTH VANCOUVER, B.C.
CANADA V7J 2C1

• ANALYTICAL CHEMISTS

• GEOCHEMISTS

• REGISTERED ASSAYERS

TELEPHONE: (604) 984-0221
TELEX: 043-52597

CERTIFICATE OF ANALYSIS

TO : HI-TEC RESOURCE MANAGEMENT LTD.,

930 BEAKINSFIELD ROAD
NORTH VANCOUVER, B.C.
V7R 1S9

CERT. # : A8213814-003-A
INVOICE # : I8213814
DATE : 13-OCT-82
P.O. # : NONE

Sample description	Prep code	Cu ppm	Mo ppm	Pb ppm	Zn ppm	Ag ppm	
120+00N 103+50E	201	33	2	16	110	0.1	--
120+00N 104+00E	201	33	2	15	88	0.3	--
120+00N 104+50E	201	19	1	16	50	0.5	--
120+00N 105+00E	201	14	1	18	76	0.5	--
120+00N 105+50E	201	33	2	10	96	0.6	--
120+00N 106+00E	201	62	1	12	100	0.1	--
120+00N 106+50E	201	40	1	12	105	0.2	--
120+00N 107+00E	201	9	2	8	48	0.1	--
120+00N 107+50E	201	9	2	8	46	0.3	--
120+00N 108+00E	201	33	1	21	110	0.1	--
120+00N 108+50E	201	41	1	15	110	0.1	--
120+00N 109+00E	201	38	1	12	100	0.3	--
120+00N 109+50E	201	39	3	11	105	0.6	--
120+00N 110+00E	201	50	1	19	140	0.2	--
120+00N 110+50E	201	53	1	24	185	0.2	--
120+00N 111+00E	201	43	2	16	91	0.1	--
120+00N 111+50E	201	55	3	22	135	0.1	--
120+00N 112+00E	201	13	1	4	58	0.6	--
120+00N 112+50E	201	20	2	11	56	0.2	--
120+00N 113+00E	201	32	1	11	130	0.2	--
120+00N 113+50E	201	14	1	5	50	0.1	--
120+00N 114+00E	201	36	2	12	165	0.6	--
120+00N 114+50E	201	9	1	6	43	0.6	--
120+00N 115+00E	201	8	2	5	52	0.3	--
120+00N 115+50E	201	15	3	10	98	0.1	--
120+00N 116+00E	201	23	1	18	74	0.2	--
120+00N 116+50E	201	10	1	6	40	0.6	--
120+00N 117+00E	201	60	1	24	255	0.3	--
121N 104+00E	201	9	1	10	45	0.1	--
121N 104+50E	201	39	1	20	140	0.4	--
121N 105+00E	201	25	3	12	97	0.3	--
121N 105+50E	201	43	1	15	99	0.2	--
121N 106+00E	201	21	2	10	100	0.3	--
121N 106+50E	201	33	1	18	175	0.2	--
121N 107+00E	201	24	1	7	65	0.2	--
121N 107+50E	201	19	2	6	54	0.1	--
121N 108+00E	201	30	1	14	85	0.1	--
121N 108+50E	201	26	2	14	120	0.1	--
121N 109+00E	201	15	1	5	38	0.6	--
121N 109+50E	201	14	1	7	74	0.2	--



MEMBER
CANADIAN TESTING
ASSOCIATION

Certified by *Hart Bichler*



CHEMEX LABS LTD.

212 BROOKSBANK AVE.
 NORTH VANCOUVER, B.C.
 CANADA V7J 2C1
 TELEPHONE: (604) 984-0221
 TELEX: 043-52597

• ANALYTICAL CHEMISTS

• GEOCHEMISTS

• REGISTERED ASSAYERS

CERTIFICATE OF ANALYSIS

TO : HI-TEC RESOURCE MANAGEMENT LTD.,

930 BEAKINSFIELD ROAD
 NORTH VANCOUVER, B.C.
 V7R 1S9

CERT. # : A8213814-004-A
 INVOICE # : I8213814
 DATE : 13-OCT-82
 P.O. # : NONE

Sample description	Prep code	Cu ppm	Mo ppm	Pb ppm	Zn ppm	Ag ppm	
121N 110+00E	201	52	1	45	230	0.9	--
121N 110+50E	201	41	1	13	135	0.2	--
121N 111+00E	201	56	2	19	130	0.4	--
121N 111+50E	201	41	1	9	104	0.1	--
121N 112+00E	201	16	1	4	67	0.1	--
121N 112+50E	201	111	1	16	106	0.1	--
121N 113+00E	201	27	1	9	88	0.2	--
121N 113+50E	201	14	2	8	62	0.1	--
121N 114+00E	201	17	2	7	67	0.1	--
121N 114+50E	201	14	1	6	56	0.1	--
121N 115+00E	201	17	1	4	74	0.1	--
121N 115+50E	201	18	2	12	67	0.1	--
121N 116+00E	201	28	2	13	90	0.3	--
121N 116+50E	201	31	2	15	69	0.1	--
121N 117+00E	201	20	3	14	74	0.1	--
122N 104+00E	201	23	2	16	95	0.1	--
122N 104+50E	201	79	2	10	100	0.5	--
122N 105+00E	201	14	1	10	43	0.1	--
122N 105+50E	201	44	1	13	150	0.1	--
122N 106+00E	201	19	1	11	90	0.3	--
122N 106+50E	201	24	2	11	91	0.1	--
122N 107+00E	201	67	1	14	102	0.1	--
122N 107+50E	201	15	2	13	65	0.1	--
122N 108+00E	201	49	2	18	170	0.1	--
122N 108+50E	201	51	1	28	180	0.1	--
122N 109+00E	201	19	1	12	53	0.1	--
122N 109+50E	201	24	2	10	73	0.2	--
122N 110+00E	201	16	2	5	48	0.9	--
122N 110+50E	201	13	2	7	82	0.4	--
122N 111+00E	201	13	3	12	53	0.5	--
122N 111+50E	201	44	1	11	170	0.7	--
122N 112+00E	201	21	2	10	72	0.6	--
122N 112+50E	201	41	2	13	104	0.5	--
122N 113+00E	201	15	4	5	60	0.5	--
122N 113+50E	201	13	2	6	66	0.3	--
122N 114+00E	201	21	3	8	88	0.2	--
122N 114+50E	201	18	2	9	80	0.9	--
122N 115+00E	201	10	1	8	43	0.5	--
122N 115+50E	201	17	2	5	64	0.8	--
122N 116+00E	201	9	2	11	108	0.7	--

Hart Bichler

Certified by



MEMBER
 CANADIAN TESTING
 ASSOCIATION



CHEMEX LABS LTD.

212 BROOKSBANK AVE.
NORTH VANCOUVER, B.C.
CANADA V7J 2C1

• ANALYTICAL CHEMISTS

• GEOCHEMISTS

• REGISTERED ASSAYERS

TELEPHONE: (604) 984-0221

TELEX: 043-52597

CERTIFICATE OF ANALYSIS

TO : HI-TEC RESOURCE MANAGEMENT LTD.,

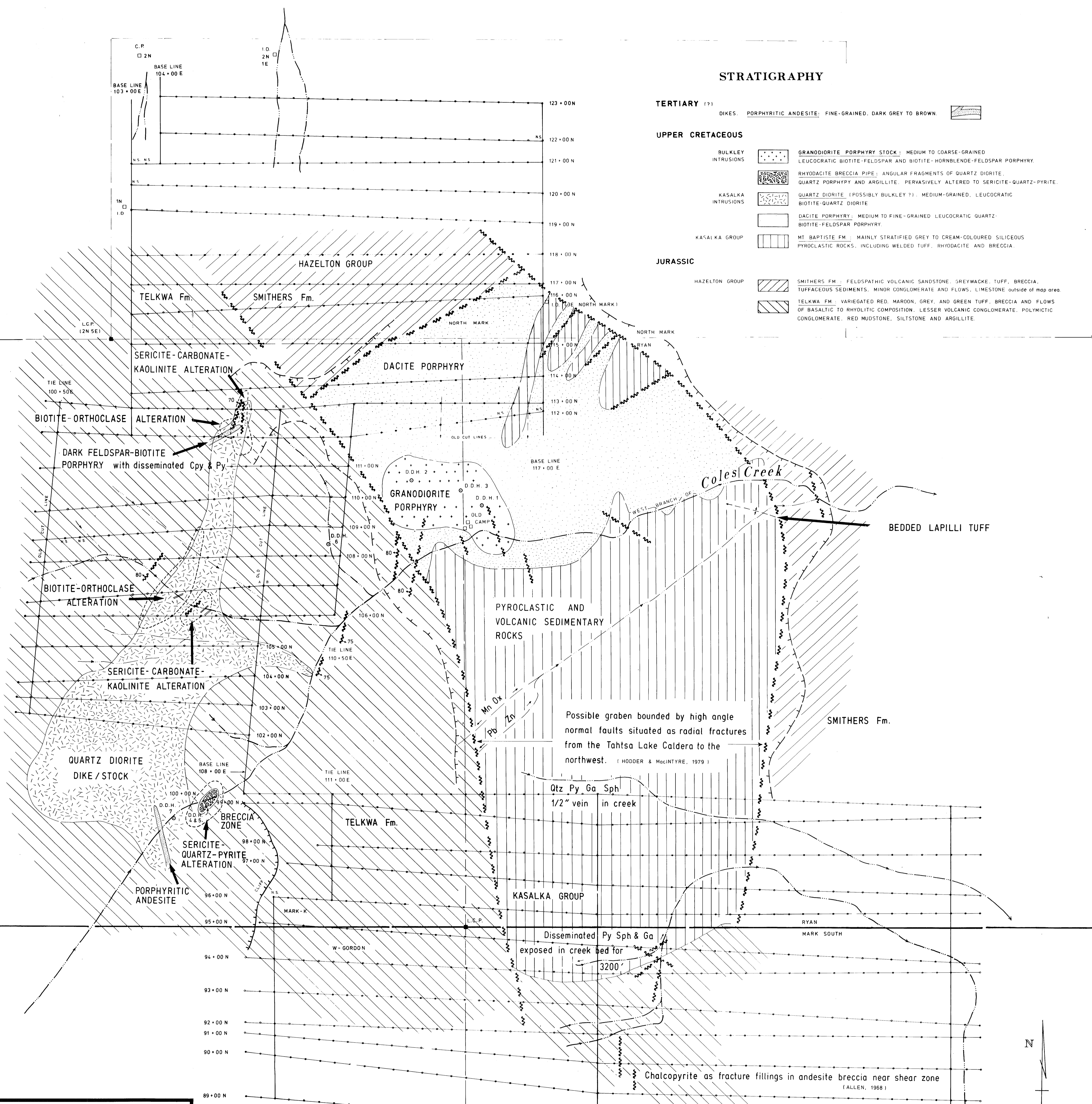
930 BEAKINSFIELD ROAD
NORTH VANCOUVER, B.C.
V7R 1S9

CERT. # : A8213814-005-A
INVOICE # : I8213814
DATE : 13-OCT-82
P.O. # : NONE

Sample description	Prep code	Cu ppm	Mo ppm	Pb ppm	Zn ppm	Ag ppm	
122N 116+50E	201	27	2	13	90	0.4	--
123N 104+00E	201	25	1	14	66	0.4	--
123N 104+50E	201	22	1	10	87	0.2	--
123N 105+00E	201	42	3	11	65	0.2	--
123N 105+50E	201	87	1	2	88	0.3	--
123N 106+00E	201	15	2	17	320	0.2	--
123N 106+50E	201	43	3	9	105	0.3	--
123N 107+00E	201	24	1	10	49	0.1	--
123N 107+50E	201	22	2	10	80	0.6	--
123N 108+00E	201	28	2	13	75	0.2	--
123N 108+50E	201	13	1	10	48	0.3	--
123N 109+00E	201	21	1	22	105	0.3	--
123N 109+50E	201	43	2	24	200	0.3	--
123N 110+00E	201	20	1	19	98	0.2	--
123N 110+50E	201	21	1	15	83	0.2	--
123N 111+00E	201	14	1	6	56	0.1	--
123N 111+50E	201	28	2	10	78	0.1	--
123N 112+00E	201	21	3	6	135	0.1	--
123N 112+50E	201	14	1	9	46	0.1	--
123N 113+00E	201	9	2	8	40	0.7	--
123N 113+50E	201	17	1	7	58	0.7	--
123N 114+00E	201	12	1	6	95	0.2	--
123N 114+50E	201	12	2	8	52	0.1	--
123N 115+00E	201	10	1	4	51	0.6	--
123N 115+50E	201	12	1	2	43	0.4	--
123N 116+00E	201	19	1	7	82	0.2	--
123N 116+50E	201	14	1	10	35	0.1	--
123N 117+00E	201	13	2	11	48	0.6	--



Certified by *Hart Bichler*



STRATIGRAPHY

- TERTIARY (T₃)**
 DIKES, PORPHYRITIC ANDESITE: FINE-GRAINED, DARK GREY TO BROWN.
- UPPER CRETACEOUS**
 BULKLEY INTRUSIONS: GRANODIORITE PORPHYRY STOCK: MEDIUM TO COARSE-GRAINED LEUCOCRATIC BIOTITE-FELDSPAR AND BIOTITE-HORNBLende-FELDSPAR PORPHYRY.
 KASALKA INTRUSIONS: RHYODACITE BRECCIA PIPE: ANGULAR FRAGMENTS OF QUARTZ DIORITE, QUARTZ PORPHYRY AND ARGILLITE, PERVASIVELY ALTERED TO SERICITE-QUARTZ-PYRITE.
 QUARTZ DIORITE (POSSIBLY BULKLEY?): MEDIUM-GRAINED, LEUCOCRATIC BIOTITE-QUARTZ DIORITE.
 DACITE PORPHYRY: MEDIUM TO FINE-GRAINED LEUCOCRATIC QUARTZ-BIOTITE-FELDSPAR PORPHYRY.
 KASALKA GROUP: MT. BAPTISTE FM.: MAINLY STRATIFIED GREY TO CREAM-COLOURED SILICEOUS PYROCLASTIC ROCKS, INCLUDING WELDED TUFF, RHYODACITE AND BRECCIA.
- JURASSIC**
 HAZELTON GROUP: SMITHERS FM.: FELDSPATHIC VOLCANIC SANDSTONE, GREYWACKE, TUFF, BRECCIA, TUFFACEOUS SEDIMENTS, MINOR CONGLOMERATE AND FLOWS, LIMESTONE outside of map area.
 TELKWA FM.: VARIEGATED RED, MAROON, GREY, AND GREEN TUFF, BRECCIA AND FLOWS OF BASALTIC TO RHYOLITIC COMPOSITION, LESSER VOLCANIC CONGLOMERATE, POLYMIC TIC CONGLOMERATE, RED MUDSTONE, SILTSTONE AND ARGILLITE.

COLES CREEK PROPERTY
 TAITSA LAKE AREA, B.C. OMINECA M.D. 93 E/11

Fig. 3
Generalized GEOLOGY map

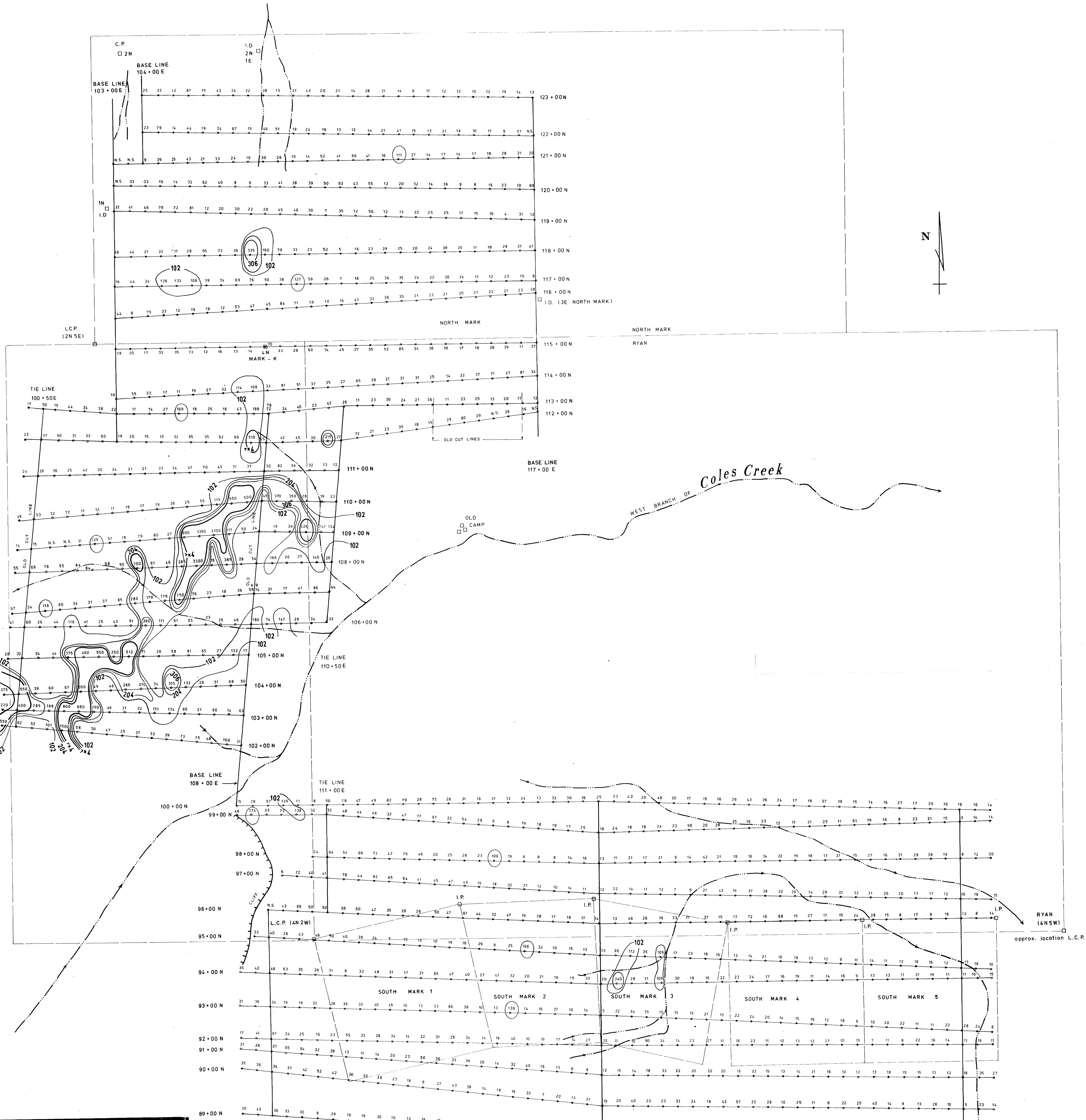
JAMES G. AGER, B.Sc.
 GEOLOGICAL BRANCH
 ASSESSMENT REPORT
10,975
 ARCTEX ENGINEERING SERVICES

SCALE: 1 cm = 50 m
 1:5000
 0 50 250 500 m
 NOV 1982

NOTE
 THE GEOLOGY, MINERALOGICAL NOTES, AND SEVERAL ADDITIONAL STREAM DRAINAGES HAVE BEEN COMPILED FROM THE FOLLOWING SOURCES: MacIntyre (1974, 1976), Woodsworth (1980), Hodder & MacIntyre (1979), Silversides (1970, 1971), Allen (1968), Gombardello (1968, 1969) and van der Heyden (1982).
 LACK OF GROUND SURVEY CONTROL HAS MADE THE POSITIONING OF THIS GEOLOGICAL DATA OPEN TO POSSIBLE ERROR.

- Py PYRITE
 Ga GALENA
 Sph SPHALERITE
 Cpy CHALCOPYRITE OCCURRENCE
- ROCK CONTACT (Generalized, not definitive)
- 70 FAULT ZONE with altitude
- ALTERATION, as noted
- COPPER-BEARING VEIN
- DIAMOND DRILL HOLE (AMAX EXPLORATION)
 O.D.H. 2
- CLAIM BOUNDARIES
- SYNCLINE AXIS of BEDDED LAPILLI TUFF
- DRAINAGE, SHOWING FLOW DIRECTION
- CLIFF

KEY



COLES CREEK PROPERTY
 TAHTSA LAKE AREA, B.C. OMINECA M.D. 93E/11

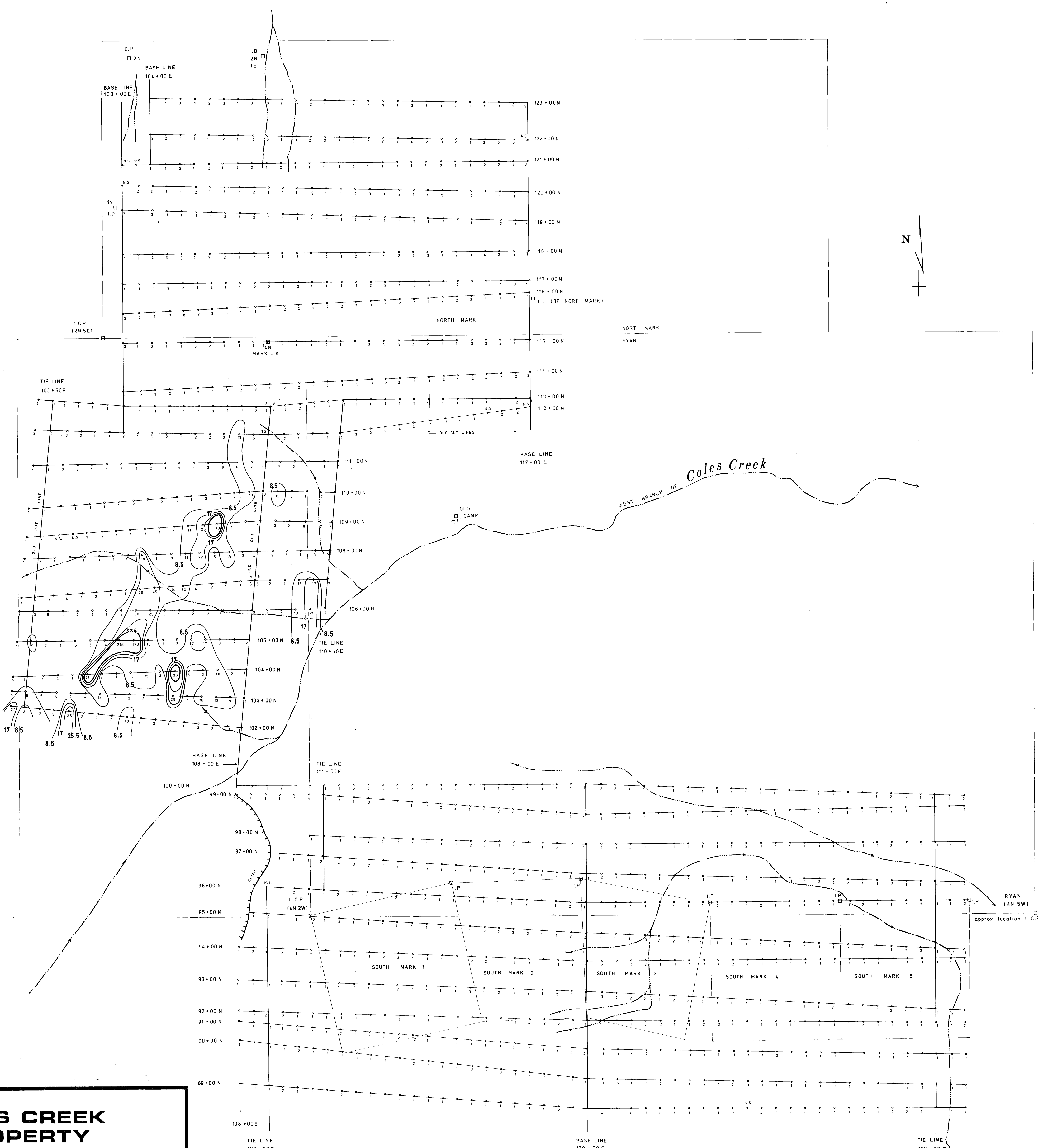
Fig. 4
Geochemistry
 ppm Cu

TO ACCOMPANY REPORT BY *James G. Ager*
JAMES G. AGER, B.Sc., GEOLOGIST

ARCTEX ENGINEERING SERVICES
 SCALE: 1 cm = 50 m, 1:5000
 0 50 250 500 m
 NOV 1982

GEOLOGICAL BRANCH ASSESSMENT REPORT

10,975



COLES CREEK PROPERTY

TAHTSA LAKE AREA, B.C. OMINECA M.D. 93E/11

**Fig. 5
Geochemistry
pp.m. Mo**

James G. Ager
TO ACCOMPANY REPORT BY **JAMES G. AGER, B.Sc., GEOLOGIST**

ARCTEX ENGINEERING SERVICES

SCALE: 1 cm = 50 m. 1:5000
0 50 250 500 m
NOV 1992

GRID LINE SAMPLE STATIONS
pp.m. Mo

KEY
CONTOUR INTERVAL 8.5 pp.m. Mo
THRESHOLD 17
> 4x THRESHOLD 25

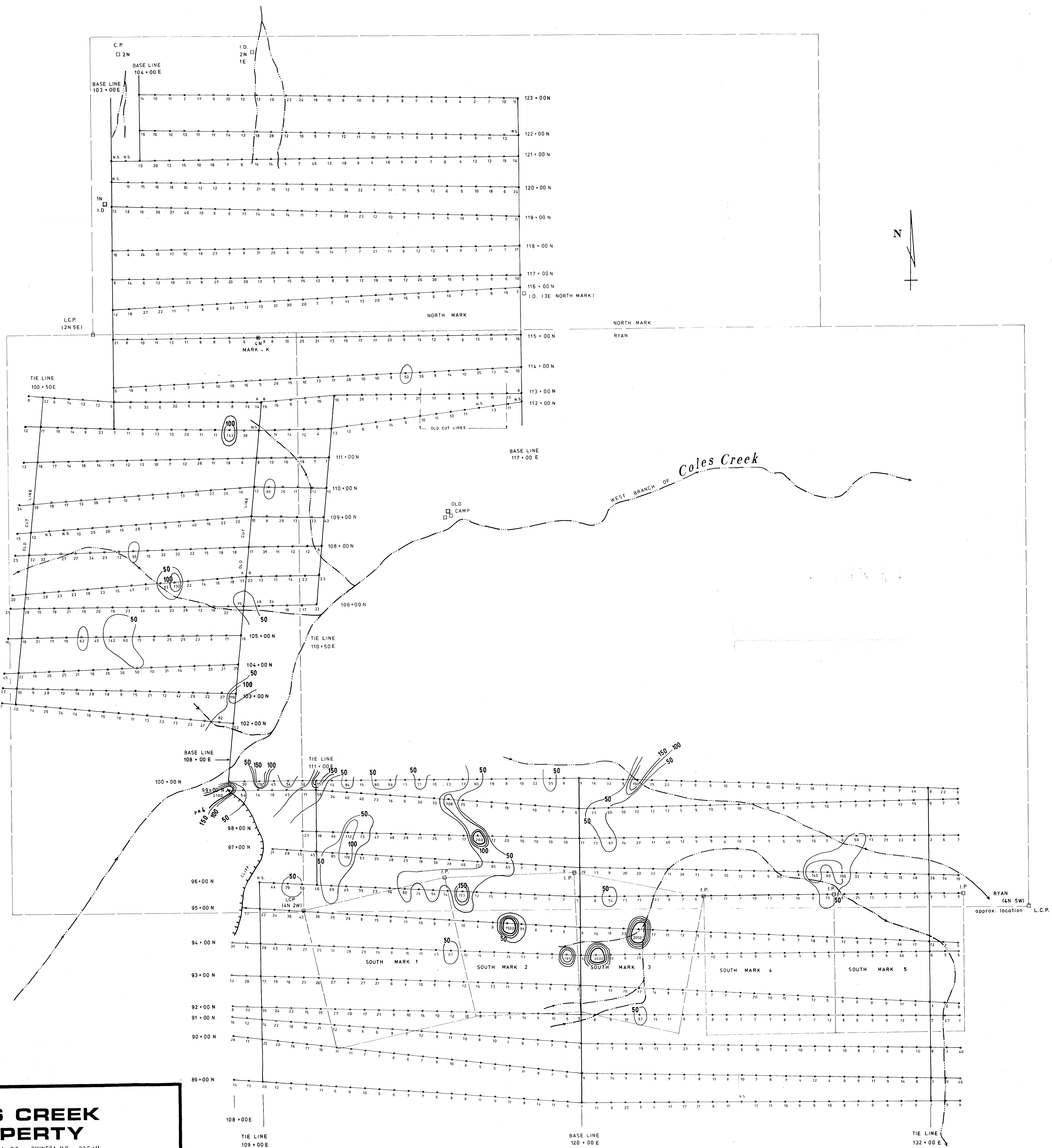
CLAIM LINES

DRAINAGE, SHOWING FLOW DIRECTION

CLIFF

**GEOLOGICAL BRANCH
ASSESSMENT REPORT**

10,975



COLES CREEK PROPERTY

TAHTSA LAKE AREA, B.C. OMINECA M.D. 93 E/11

Fig. 6

Geochemistry

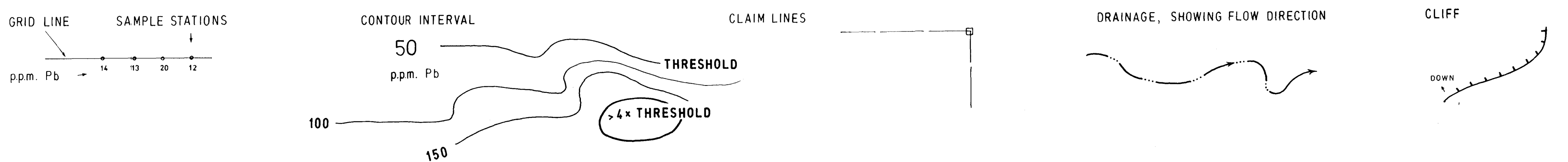
ppm. Pb

James G. Ager
 TO ACCOMPANY REPORT BY
JAMES G. AGER, B.Sc., GEOLOGIST

ARCTEX ENGINEERING SERVICES

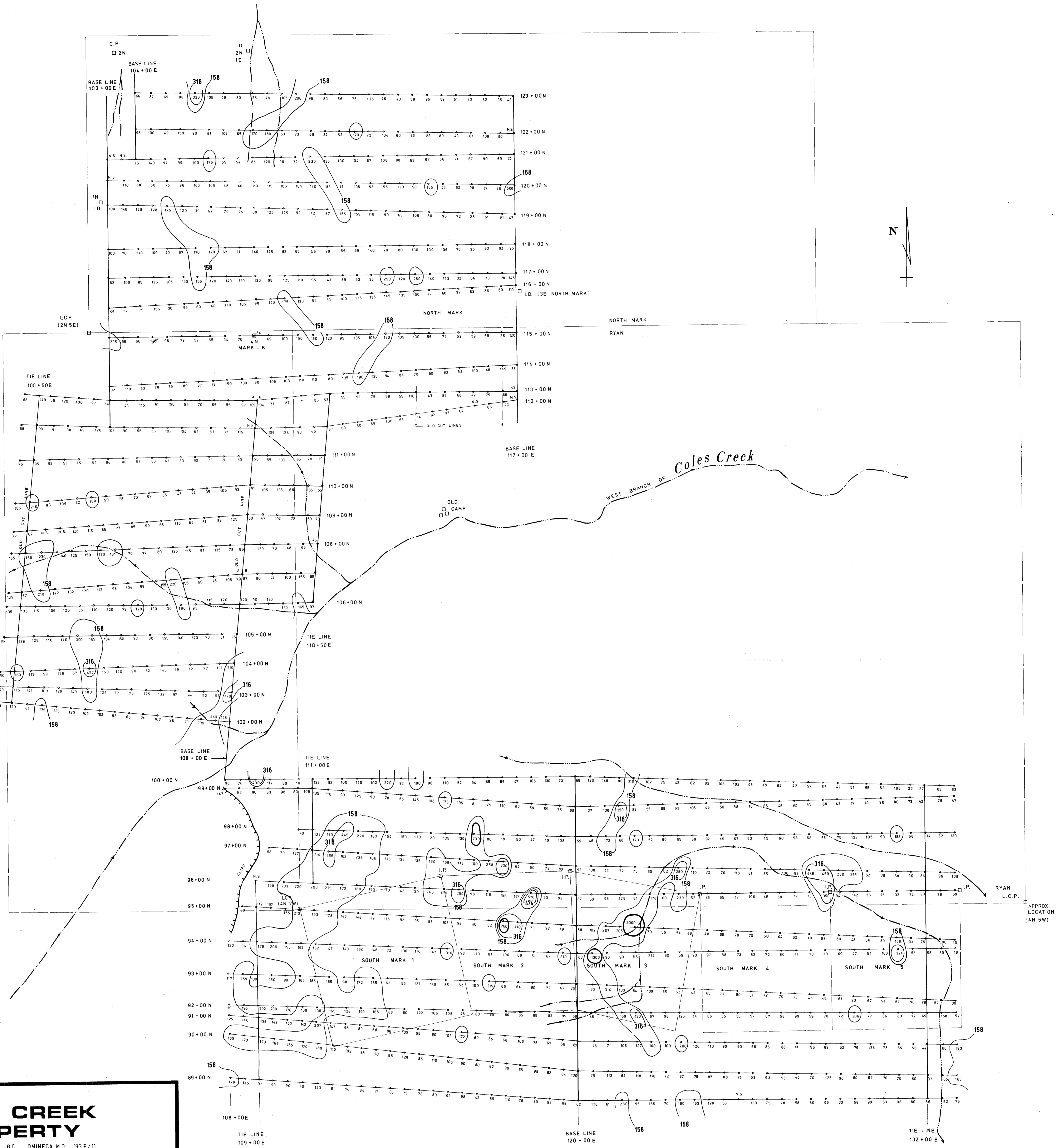
SCALE: 1 cm = 50 m. 1:5000 NOV. 1982

KEY



GEOLOGICAL BRANCH ASSESSMENT REPORT

10,975



COLES CREEK PROPERTY

TAHTSA LAKE AREA, B.C. OMINECA M.D. '93E/11

**Fig. 7
Geochemistry
pp.m. Zn**

James G. Ager
TO ACCOMPANY REPORT BY **JAMES G. AGER, G.S.C., GEOLOGIST**

ARCTEX ENGINEERING SERVICES

SCALE 1 cm = 50 m. 1:5000 NOV 1982

GRID LINE SAMPLE STATIONS
pp.m. Zn → 14 13 20 12

THRESHOLD AND CONTOUR INTERVAL
158
pp.m. Zn

KEY
158
316
474 THRESHOLD

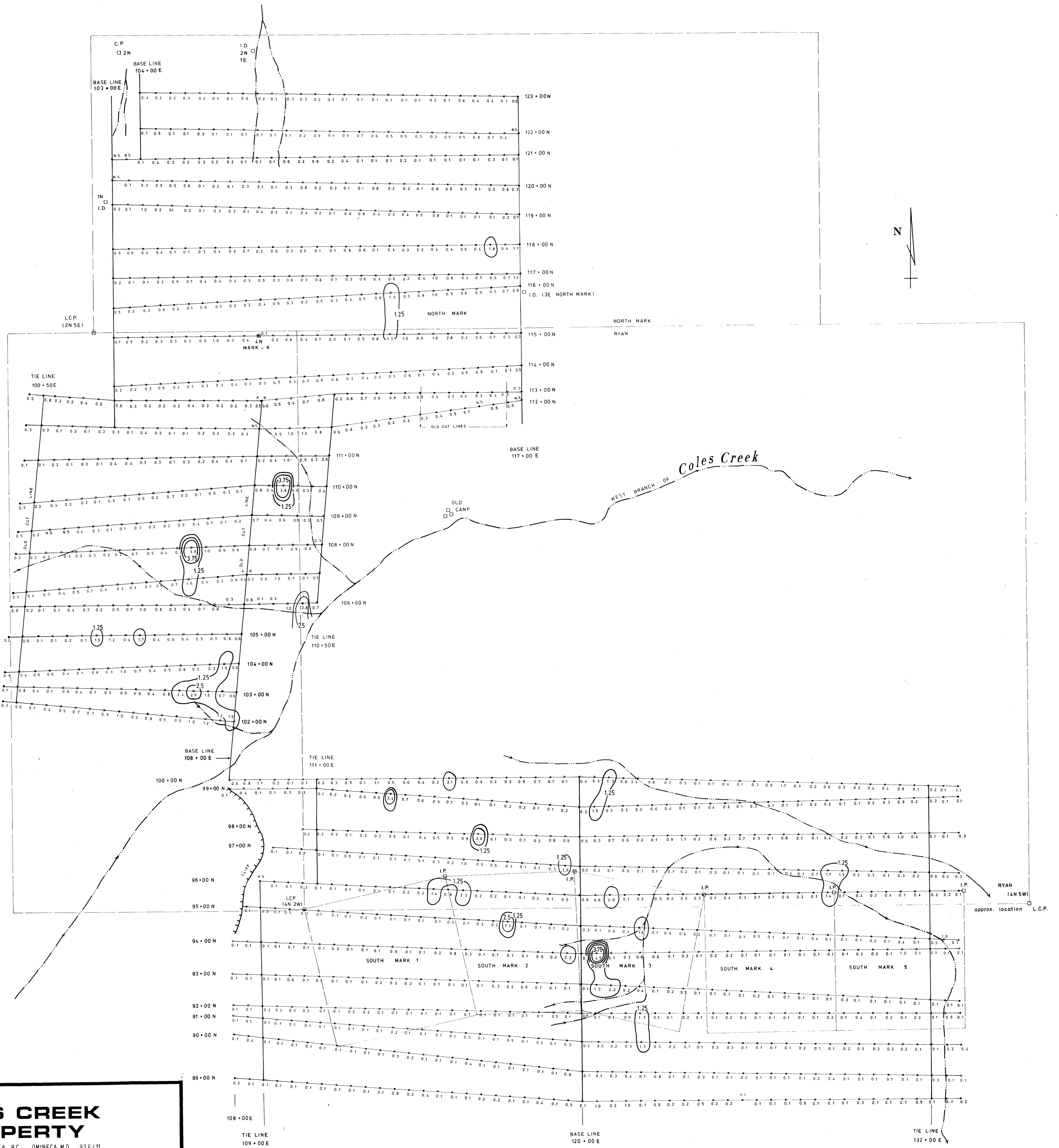
CLAIM LINES

DRAINAGE, SHOWING FLOW DIRECTION

CLIFF

**GEOLOGICAL BRANCH
ASSESSMENT REPORT**

10,975



COLES CREEK PROPERTY
 TAHTSA LAKE AREA, B.C. OMINICA M.D. 93E/11

Fig. 8
Geochemistry
 ppm Ag

TO ACCOMPANY REPORT BY *James G. Ager*
JAMES G. AGER, B.Sc. GEOLOGIST

ARCTEX ENGINEERING SERVICES

SCALE: 1 cm = 50 m
 1:5000
 NOV 1982

KEY

- GRID LINE
- SAMPLE STATIONS
- THRESHOLD AND CONTOUR INTERVAL: 1.25 ppm Ag
- CLAIM LINES
- DRAINAGE, SHOWING FLOW DIRECTION
- CLIFF

GEOLOGICAL BRANCH ASSESSMENT REPORT

10,975