

BRINCO MINING LIMITED

ASSESSMENT REPORT

GEOLOGICAL AND GEOCHEMICAL SURVEY
OF THE SHERPA CLAIM, NELSON MINING DIVISION

N.T.S.: ⁸²83 F/2W

Latitude: 49° 12' N

Longitude: 116° 49' W

Owner & Operator: Brinco Mining Limited

Author: I. Coster, I. Lyn

Date: December, 1982

**GEOLOGICAL BRANCH
ASSESSMENT REPORT**

11-028

TABLE OF CONTENTS

	<u>PAGE</u>
A <u>INTRODUCTION</u>	
1) Location and Access	1
2) Property	1
3) Work Done	1
B <u>TECHNICAL DATA AND INTERPRETATION</u>	
1) Geochemical Survey	4
a) Procedure	4
b) Results	4
2) Geological Mapping	4
C <u>CONCLUSIONS AND RECOMMENDATIONS</u>	6
Appendix I - Silt Sample Results	
Itemized Cost Statement	
Statement of Qualifications	

LIST OF MAPS AND FIGURES

<u>MAPS</u>	<u>TITLE</u>	<u>SCALE</u>
Fig 1	Index Map	
Fig 2	Location Map	1:50,000
Fig 3	Geology and Geochemistry	1:10,000 (In Pocket)

A. INTRODUCTION

1. Location and Access

The Sherpa claim is located on the headwaters of Shaw Creek between 5,200 and 7,000 feet elevation, 12 kilometres west of the Kootenay Valley near Creston. The claim is located within NTS sheet 82 F/2 and the Nelson Mining Division.

Access to the claim was by four-wheel drive truck, 15 miles from the Summit Creek bridge on Highway 3, via logging roads.

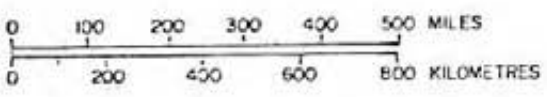
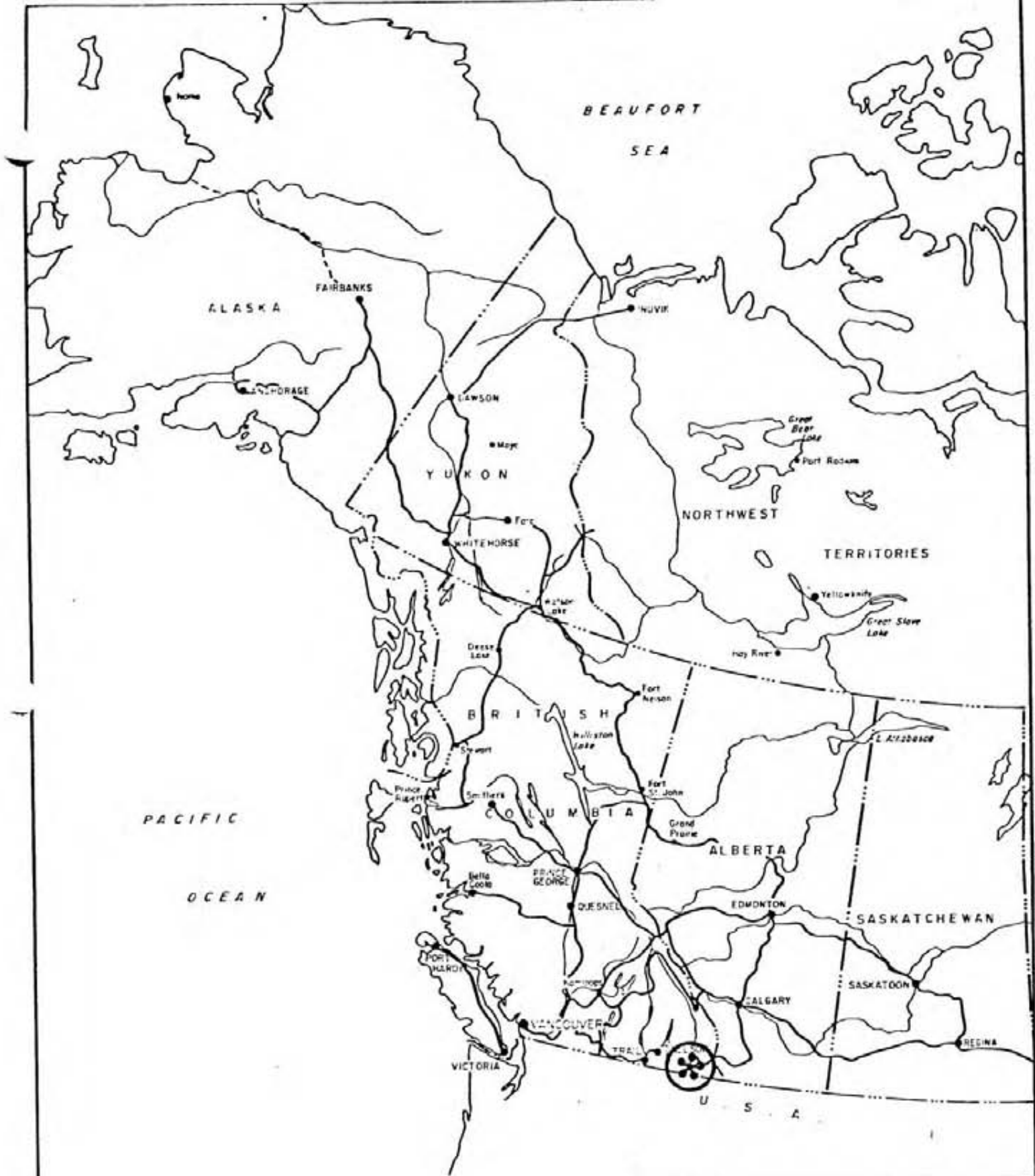
2. Property

The Sherpa claim was staked by Anthony Mould then recorded, optioned and transferred to Brinco Mining Limited, July 26, 1982.

3. Work Done

Work done in 1982 consisted of geological mapping and geochemical survey by I. Lyn and I. Coster. Linecutting was not required as this was an initial survey to get an idea of the geology and mineralization on the claim. Outcrops and sample stations were located by chain, compass and altimeter from topographic features. Five km² were mapped at 1:10,000 scale.

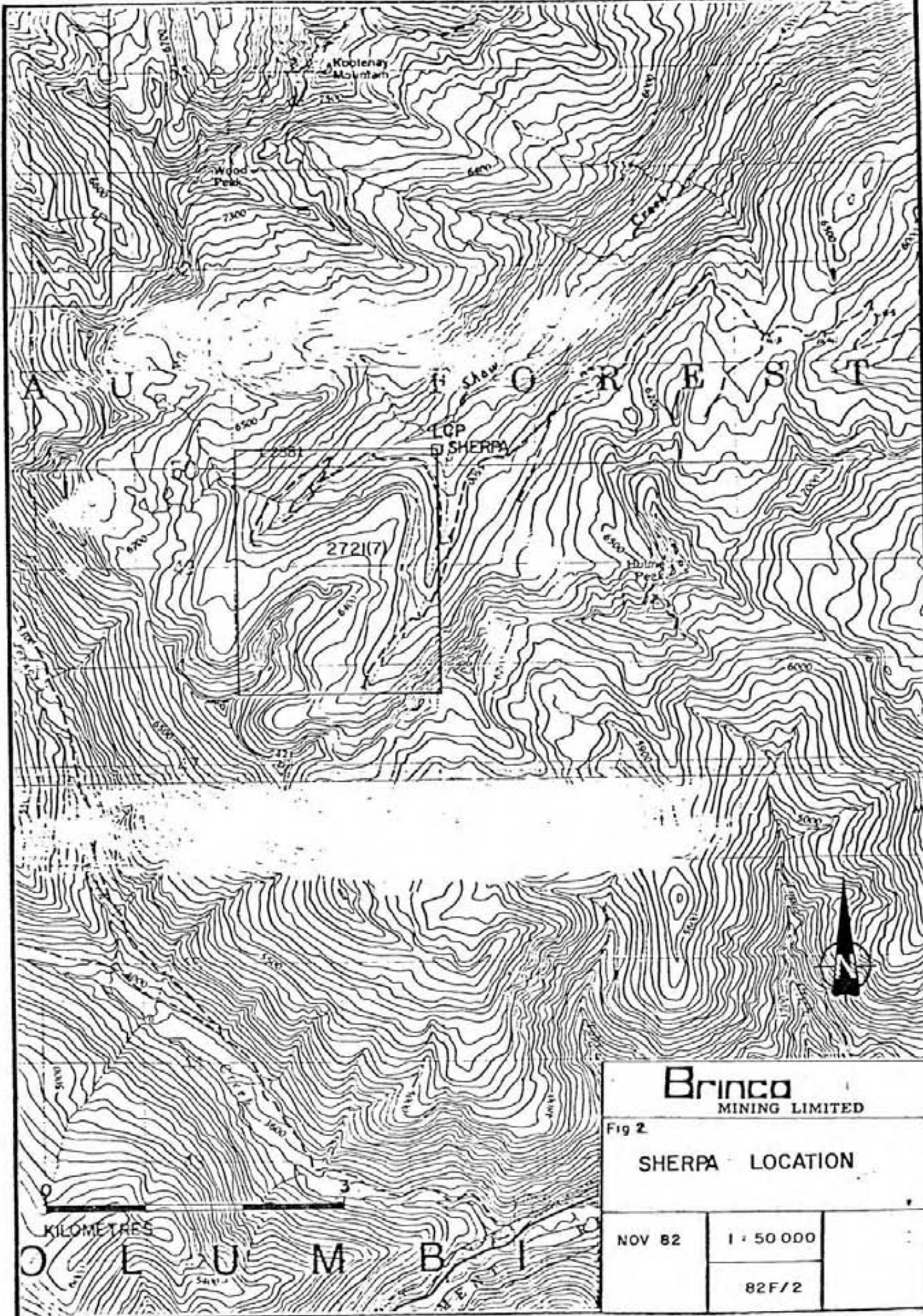
The geochemical survey consisted of silt sampling the creeks on the claim at about 300 m intervals. Twenty-five samples were collected and analyzed for Cu, Mo, Ag and Au.



Brinco
 MINING LIMITED

SHERPA
 PROPERTY LOCATION MAP

DATE: NOV 82 FIGURE: 1



Brinco
MINING LIMITED

Fig 2
SHERPA LOCATION

NOV 82	1 : 50 000	
	82F/2	

B. TECHNICAL DATA AND INTERPRETATION

1. Geochemical Survey

a) Procedure

Silt samples were collected at roughly 300 m intervals from sediment beneath flowing water in creeks. The samples were stored in standard brown kraft paper envelopes for drying and shipment to Chemex Labs in North Vancouver, B.C. Each sample was analyzed for trace elements by chemist Hart Bichler.

Samples were oven-dried, then sieved to obtain the -80 mesh portion which was then subjected to a perchloric-nitric acid extraction procedure. From the resulting solution, trace element concentrations were measured by Atomic Absorption Analysis. Each sample was analyzed for copper, molybdenum, silver and gold.

b) Results

All samples contained extremely low amounts of the metals analyzed. However, the higher values of 8 to 17 ppm Cu and 2 to 6 ppm Mo can be seen to be associated with certain drainages of the northwest part of the claim (Fig. 3).

2. Geological Mapping

The claim is mostly covered by mature forest which has been selectively logged in places. Outcrop is generally sparse, but is good around cirques west and south of the claim and along ridges and spurs extending into the claim.

The geology, in general, consists of granodiorite and quartz monzonite intrusives of Cretaceous age, the granodiorite containing xenoliths and roof pendants of metamorphosed sediments.

Quartz monzonite was found in the northeastern part of the claim. It has rather uniform texture and composition of medium to coarse grained quartz, feldspar and biotite with sparse K-feldspar phenocrysts. Narrow quartz, feldspar and mica pegmatite dykes are present.

The granodiorite occurs on the west and south of the claim. It is generally a fine grained feldspar, quartz, biotite and hornblende rock, but the composition is variable, probably due to the assimilation of country rock. The inclusions of country rock range from less than a metre to more than a couple hundred metres in size and are compositionally varied, consisting of quartzites, quartz-mica schists and gneisses, conglomerates, hornfels, amphibolite, limestone, calcsilicate rock and several types of skarn. They probably belong to the Precambrian Lower Windermere and Purcell Groups. Inclusions up to 100 m in size

2. Geological Mapping (Cont'd.)

could be seen to be completely surrounded by granodiorite, larger ones are poorly exposed or isolated on the crests of ridges. The general structural trend is northwesterly, dips are variable. The Intrusives are not foliated.

Minor skarn was found on the claim, they are best exposed in the headwalls of cirques south and west of the claim, but they carried sparse mineralization.

C. CONCLUSIONS AND RECOMMENDATIONS

There is little indication of mineralization on the claim and no further work is warranted.

APPENDIX I



CHEMEX LABS LTD.

212 BROOKSBANK AVE.
 NORTH VANCOUVER, B.C.
 CANADA V7J 2C1
 TELEPHONE: (604) 984-0221
 TELEX: 043-52597

APPENDIX I

• ANALYTICAL CHEMISTS • GEOCHEMISTS • REGISTERED ASSAYERS

CERTIFICATE OF ANALYSIS

TO : BRINCO MINING LIMITED

704 - 602 WEST HASTINGS STREET,
 VANCOUVER, B.C.
 V6B 1P2

CERT. # : A8213612-001-A
 INVOICE # : 18213612
 DATE : 1-OCT-82
 P.O. # : NONE
 8101-02

ATTN: JAN LYN

Sample description	Prep code	Cu ppm	Mo ppm	Ag ppm	AU-AA ppb		
82 SH-L01	201	17	1	0.1	<10	--	--
82 SH-L02	201	6	1	0.1	<10	--	--
82 SH-L03	201	7	6	0.1	<10	--	--
82 SH-L04	201	7	2	0.1	<10	--	--
82 SH-L05	201	13	3	0.1	<10	--	--
82 SH-L06	201	5	2	0.1	<10	--	--
82 SH-L07	201	6	1	0.1	<10	--	--
82 SH-L08	201	7	1	0.1	<10	--	--
82 SH-L09	201	9	1	0.1	<10	--	--
82 SH-L10	201	8	1	0.1	<10	--	--
82 SH-L11	201	11	1	0.1	<10	--	--
82 SH-L12	201	12	1	0.1	<10	--	--
82 SH-L13	201	13	1	0.1	<10	--	--
82 SH-L14	201	8	1	0.1	<10	--	--
82 SH-L15	201	7	1	0.1	<10	--	--
82 SH-L16	201	6	1	0.1	<10	--	--
82 SH-L17	203	5	1	0.1	<10	--	--
82 SH-L18	201	5	1	0.1	<10	--	--
82 SH-L19	201	6	1	0.1	<10	--	--
82 SH-L20	201	9	1	0.1	<10	--	--
82 SH-L21	201	5	1	0.1	<10	--	--
82 SH-L22	201	4	1	0.1	<10	--	--
82 SH-L23	201	5	1	0.1	<10	--	--
82 SH-L24	203	5	1	0.1	<10	--	--
82 SH-L25	203	4	1	0.1	<10	--	--

RECEIVED
 OCT 04 1982
 BRINCO
 VANCOUVER, B.C.

Certified by *Hart Buehler*



ITEMIZED COST STATEMENT

Wages

Geologist - 8 days, Sept. 10, 11, 18-23 @ \$136/day	\$ 1,088.00
Assistant - 8 days, Sept. 10, 11, 18-23 @ \$115/day	920.00

Food and Accommodation

16 man days, Sept. 10, 11, 18-23 @ \$22.16/day	354.64
--	--------

Transportation

Truck rental - 8 days @ \$31/day	248.00
Gas	136.58

Chemical Analyses

25 soil samples analyzed for Cu, Mo, Ag, Au	193.75
\$7.75/sample	

Report Preparation


Writing and drafting - 3 days @ \$136/day	408.00
---	--------

TOTAL	<u>\$ 3,348.97</u>
-------	--------------------

STATEMENT OF QUALIFICATIONS

I, Ian Coster, 1050 Barnet Highway, Port Moody, B.C., hereby certify the following qualifications.

- (a) I obtained a B.Sc. degree in Geology from the University of British Columbia in 1981.
- (b) I have been practising my profession in Canada since that time.



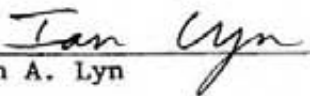
Ian Coster

Geologist,
Brinco Mining Limited

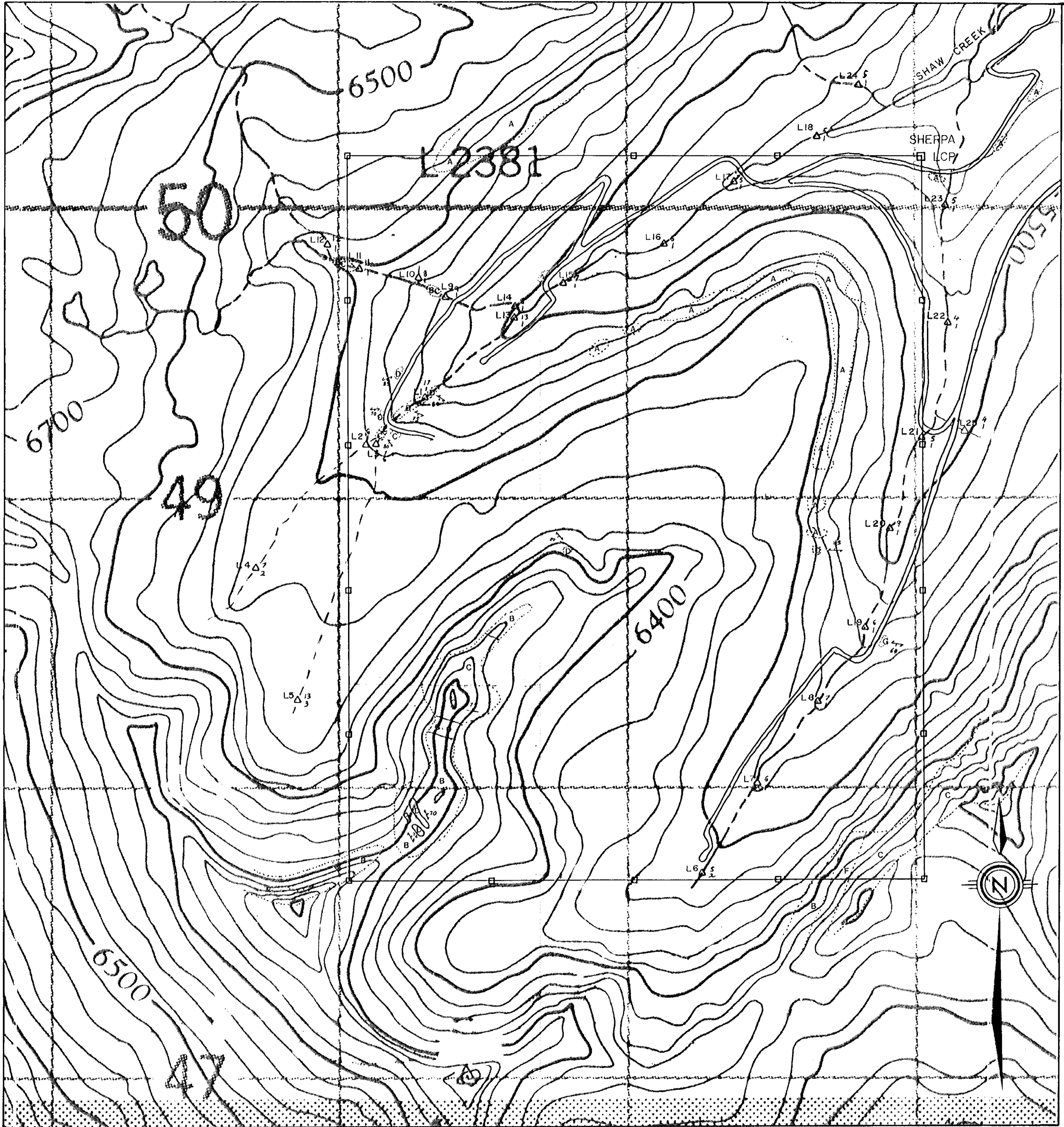
STATEMENT OF QUALIFICATIONS

I, Ian A. Lyn, 2687 William Street, Vancouver, B.C., hereby certify the following Qualifications.

- (a) I obtained a B.S.C. degree in Geology from the University of Toronto in 1978.
- (b) I have been practising my profession as an Exploration Geologist in Canada since that time.



Ian A. Lyn
Geologist,
Brinco Mining Limited



- OUTCROP
- A QUARTZ MONZONITE
- B GRANODIORITE
- C QUARTZITE
- D QUARTZ-MICA GNEISS + SCHIST
- E AMPHIBOLITE
- F CONGLOMERATE
- G SKARN

L26 Δ ₃ SILT SAMPLE Cu ppm.
Mo ppm.
All Samples 0-1 ppm Ag, <10 ppb Au.
LCP Located by chain and compass.

**GEOLOGICAL BRANCH
ASSESSMENT REPORT**

11-028



Brinca MINING LIMITED		
FIG. 3. SHERPA GEOLOGY, GEOCHEMISTRY		
NOV 82	1:10,000	DRAWN BY: I.L.
	82 F/2	