

83-#46-#11089 2  
2

DIAMOND DRILLING REPORT  
ON THE  
CAP 4 CLAIM

ATLIN MINING DIVISION  
BRITISH COLUMBIA

LATITUDE 58° 45' N  
LONGITUDE 133° 18' W

N.T.S.  
104 K

FOR  
BERGLYNN RESOURCES INC. (OPERATOR)  
AND  
OMNI RESOURCES INC. (OWNER)  
900-475 HOWE ST.  
VANCOUVER, B.C.

BY  
G.H. RAYNER, P.ENG.  
G.H. RAYNER AND ASSOC. LTD.

WEST VANCOUVER, B.C.

JAN. 15, 1983.

**GEOLOGICAL BRANCH  
ASSESSMENT REPORT**

**11,089**

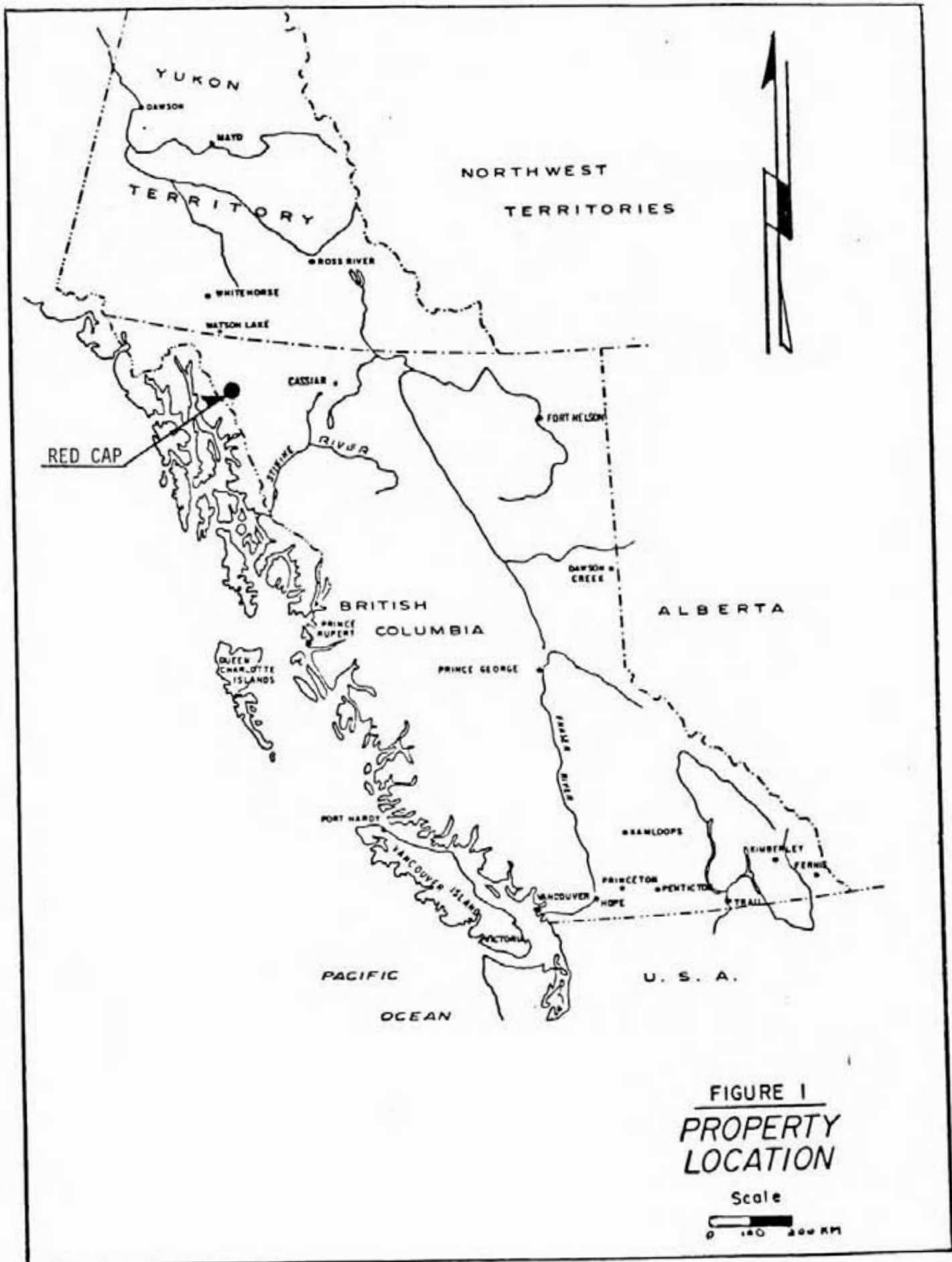
TABLE OF CONTENTS

	Page
I INTRODUCTION	
Ia SUMMARY.....	1
Ib LOCATION AND ACCESS.....	1
Ic PROPERTY.....	1
II TECHNICAL DATA AND INTERPRETATION	
IIa GEOLOGICAL SETTING.....	2
IIb PURPOSE AND RESULTS OF DRILLING.....	2
IIc CONCLUSIONS .....	3
CERTIFICATE.....	4

APPENDIX I	PERCENTAGE CORE RECOVERY
APPENDIX II	ASSAY RESULTS AND ASSAY INTERVALS
APPENDIX III	STATEMENT OF COSTS

ILLUSTRATIONS

FIGURE I	LOCATION MAP	Following page 1
FIGURE II	CLAIM MAP	Following page 2
FIGURE III	DRILL HOLE LOCATION	In Pocket



**FIGURE 1**  
**PROPERTY**  
**LOCATION**

## I INTRODUCTION

### 1a SUMMARY

During the period from August 21 to August 29, 1982, one diamond drill (DDH-RC-82-1) was completed on the Cap No. 4 mineral claim. The hole was completed at a depth of 31.2 metres. Core size was NQ. The hole was drilled as part of a larger planned program. However, dropping autumn temperatures cut off the drill water supply forcing a premature halt to the program.

The core is stored at the drill site.

### 1b LOCATION AND ACCESS

The Cap claims are located in the Taku River area of northwestern British Columbia. The specific location is Latitude 58° 45"N; Longitude 133° 18'W.

Access to the area is by air from the settlement of Atlin located some 100 kilometers to the north. The property affords many landing sites for helicopters. Float planes land on the nearby Taku River and larger aircraft have the use of the Tulsequah air strip some 20 kilometers to the southwest.

The bulk of the area of interest on the property lies above timberline. Except for some precipitous sections the ground is generally accessible on foot.

### 1c PROPERTY

The Cap 4 Mineral Claim of 20 units, record number 1067(5), Expiry Date-May 14, 1983, is held by record in the name of Omni Resources Inc. Omni Resources is also the recorded owner of several adjoining blocks of ground in the area. All claims lie in the Atlin Mining Division.

## II TECHNICAL DATA AND INTERPRETATION

### IIa GEOLOGICAL SETTING

The mineral setting on the Red Cap property consists of a high level porphyry copper environment.

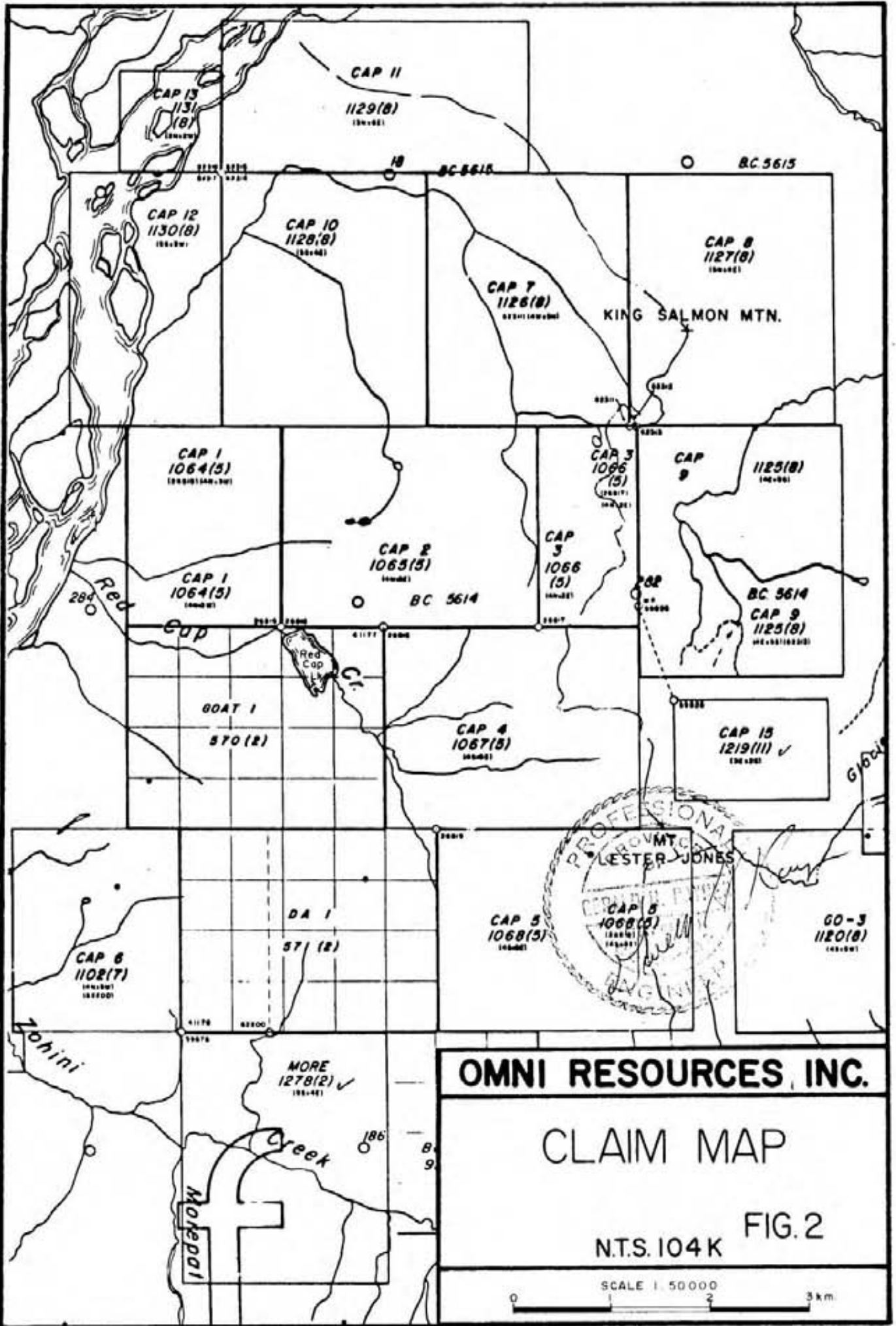
The porphyry system has intruded a sequence of essentially coeval volcanics of the Stuhini Group. The Stuhini volcanics are of Upper Triassic Age and in general consist of flows and pyroclastics of intermediate composition. In the immediate vicinity of the Red Cap porphyry system rhyolites and acid pyroclastics make up a significant percentage of the upper part of the volcanic section. Within these upper acid rocks are found lenses and horizons of massive sulphides and of pyroclastic breccia material with a sulphide matrix.

### IIb PURPOSE AND RESULTS OF DRILLING

The present drill program was designed to test gold geochemical anomalies in both the porphyry and volcanogenic environments on the property.

The first hole, the one described in this report, was collared to test a gold geochemical anomaly of 35,000 ppb located in an area porphyry system. The surface outcrop in the collar area consists entirely of acid volcanics rarely interspersed with thin gossan remnants of massive sulphide material from which any original values had been leached. The soil values showed no correlation with this gossan material.

The hole was collared at about the 1700 m. elevation (see Fig. 3). The hole was oriented at an azimuth of 176 degrees and a dip of minus 65 degrees. Drilling stopped at 31.2 metres when the water supply failed because of freezing conditions.



The hole cut massive unfractured rhyolite throughout its length except for the section from 11.45 m. to 13.6 m. (see drill log.) This section of 2.15 metres consisted of a lens of conformable massive sulphide material carrying significant values in copper and silver.

This massive sulphide section shows an intercept angle with the core of 35 degrees. In view of the generally low dips observed in the local volcanics and the 65 degree dip of the hole it is probable that the lens has a true dip on the order of 30 degrees or 50.

Sulphide mineralization consists dominantly of pyrite and pyrrhotite with some sections of good chalcopyrite as reflected in the assays. Good silver values accompany the copper but gold results are low. Sparse sphalerite and traces of galena complete the sulphide mineral suite.

The only other mineral of significance seen in the core was tourmaline. Tourmaline occurs as fine needles and rosettes of black schorlite scattered irregularly through the rhyolite. Tourmaline is also seen elsewhere on the property in association with porphyry-type mineralization.

#### IIc CONCLUSIONS

Although the source of the gold geochemical anomaly was not located, the massive sulphide copper-silver discovery clearly warrants further work,

Respectfully submitted,

G.H. Raymer, P. Eng.



January 15, 1983.

CERTIFICATE

I, Gerald H. Rayner do hereby certify that:

1. I am a consulting geological engineer with offices at 626 Duchess Avenue, West Vancouver, B.C.
2. I am a graduate of the University of British Columbia (B.Sc. Geology).
3. I am a member in good standing of the Association of Professional Engineers of the Province of British Columbia.
4. I have practised my profession since 1958 primarily in Western North America and the South Pacific.
5. This report is based on personal observations on the Red Cap property during the period August 21 to August 29, 1982. These observations included the logging of the drill core from DDH RC-82-1.

Dated at West Vancouver, B.C. this 15th day of January, 1983:





APPENDIX I

PERCENTAGE CORE RECOVERY

PERCENTAGE CORE RECOVERY

<u>METERAGE</u>	<u>PERCENTAGE RECOVERY</u>
0- 1.5	55
1.5- 2.1	85
2.1- 2.9	80
2.9- 4.0	65
4.0- 4.3	30
4.3- 4.5	80
4.5- 6.0	100
6.0- 9.0	100
9.0-10.2	100
10.2-11.4	100
11.4-12.0	100
12.0-13.4	100
13.4-13.6	100
13.6-16.0	100
16.0-19.0	80
19.0-21.0	100
21.0-24.0	95
24.0-27.0	100
27.0-31.2	90

APPENDIX II

ASSAY RESULTS AND ASSAY INTERCEPTS



# Certificate of Analysis

Berglynn Resources Inc

REPORT NO. A42-133

DATE Sept. 10, 1982

I hereby certify that the following are the results of analyses made by us upon the herein described drill core samples

MARKED	ppm	ppm	%	%	%	From	To	Intercept (Meters)
	Au	Ag	Cu	Pb	Zn			
57026	L0.05	36.5	0.43	0.04	L0.01	4.0	4.3	0.3
57027	L0.05	6.5	0.14	0.02	0.04	4.3	4.5	0.2
57028	L0.05	1.5	0.01	0.03	0.01	4.5	6.0	1.5
57029	L0.05	L1.5	L0.01	L0.01	L0.01	6.0	9.0	3.0
57030	L0.05	L1.5	L0.01	L0.01	L0.01	9.0	10.2	1.2
57031	L0.05	8.0	0.12	0.02	0.01	10.2	11.4	1.2
57032	0.11	170.0	3.17	L0.01	0.14	11.4	12.0	0.6
57033	0.09	60.0	1.15	0.04	0.02	12.0	13.4	1.4
57034	0.10	160.0	2.68	0.03	0.21	13.4	13.6	0.2
57035	L0.05	35.0	0.32	0.03	0.31	13.6	16.0	2.4
57036	L0.05	9.5	0.10	0.04	0.01	16.0	19.0	3.0
57037	L0.05	5.0	0.04	0.01	L0.01	19.0	21.0	2.0
57038	L0.05	3.0	L0.01	0.01	L0.01	21.0	24.0	3.0
57039	L0.05	1.5	L0.01	L0.01	L0.01	24.0	27.0	3.0
57040	L0.05	L1.5	L0.01	L0.01	L0.01	27.0	30.0	3.0

L denotes less than  
Fire assay Au/Ag to follow for samples 57032 to 57035

BONDAR-CLEGG & COMPANY LTD.

**NOTE:**

Rejects returned within two weeks  
Pulps returned within three months  
unless otherwise arranged.

*Steve Singh*



# BONDAR-CLEGG & COMPANY LTD.

136B INDUSTRIAL RD. WHITEHORSE, YUKON Y1A 4X1

PHONE: (403) 667-6523  
TELEX: 036-8-460

## Certificate of Analysis

), Berglynn  
\_\_\_\_\_  
\_\_\_\_\_

REPORT NO. A42-133 .....

DATE September 30, 1982 .....

hereby certify that the following are the results of analyses made by us upon the herein described rock ..... samples

MARKED	oz/ton	oz/ton			From	To	Intercept (Meters)	
	Ag	Au						
57032	4.94	0.008			11.4	12.0	0.6	
57033	1.70	0.004			12.0	13.4	1.4	
57034	4.10	0.005			13.4	13.6	0.2	
57035	0.88	0.002			13.6	16.0	2.4	

NOTE: Analysis done by fire assay  
Rejects re Analyzed two weeks  
Pulps retained three months

BONDAR-CLEGG & COMPANY LTD.

*Steve Leggett*

APPENDIX III

DIAMOND DRILL LOGS











APPENDIX IV  
STATEMENT OF COSTS

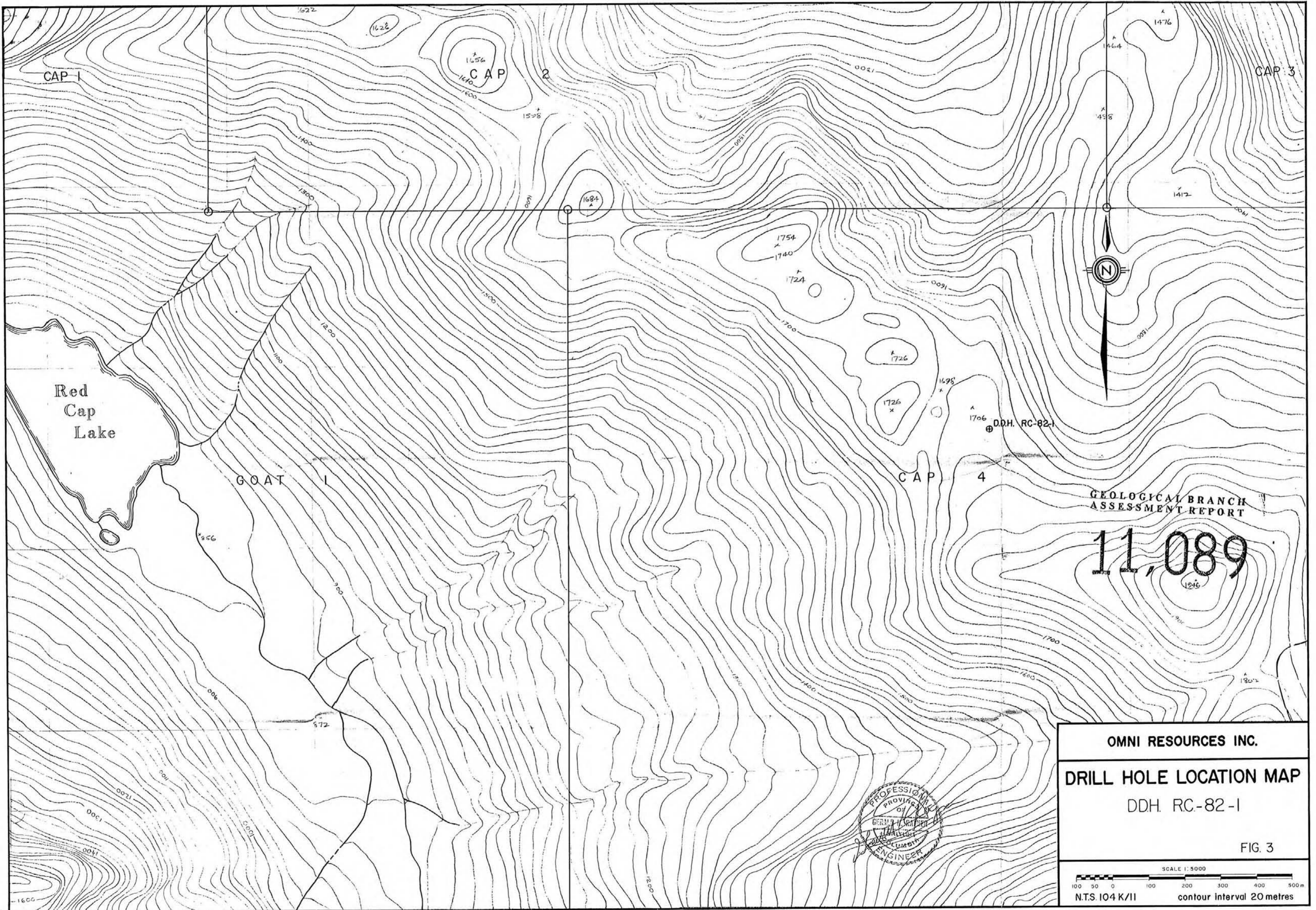
STATEMENT OF COSTS

1. Personnel:

Rick Merrell, assistant		
14 days @ \$80	\$ 1120.00	
David Bergvinson, assistant		
14 days @ \$80	1120.00	
V. Berry, driller		
10 days @ \$95	950.00	
K. Raumau, driller		
10 days @ \$95	950.00	
J. Wartah, driller		
10 days @ \$95	950.00	
S. Sheldon, driller		
8 days @ \$95	760.00	
E. Bergvinson, party chief		
12 days @ \$100	1200.00	
G. Rayner, geologist		
9 days @ \$400	3600.00	
	<u>\$10,650.00</u>	\$10,650.00

2. Assaying:		545.00
3. Camp costs		2,493.90
4. Drilling (non salary costs)		5,128.26
5. Equipment Rental		250.00
6. Helicopter		15,462.30
7. Travel and accomodation		2,154.55
8. Druhting and report preparation		1,350.00
		<u>1,350.00</u>
	Total	\$ 38,034.01





GEOLOGICAL BRANCH  
ASSESSMENT REPORT

11,089

OMNI RESOURCES INC.

DRILL HOLE LOCATION MAP

DDH. RC-82-1

FIG. 3

