

83-#317 A -#11216

GREAT WESTERN PETROLEUM CORPORATION

GEOLOGICAL REPORT

ON THE

ASAP CLAIM

OMINECA MINING DIVISION

BRITISH COLUMBIA

NTS: 94E/6W

LOCATION: 57° 20' N ; 127° 15' W

OWNER: Great Western Petroleum Corporation

OPERATOR: Great Western Petroleum Corporation

AUTHOR: Louise Eccles

DATE: December, 1982

GEOLOGICAL BRANCH
ASSESSMENT REPORT

11,216

L. Eccles

TABLE OF CONTENTS

	<u>PAGE</u>
INTRODUCTION	1
PROPERTY DEFINITION	
History	1
List of Claims	2
Owner and Operator	2
Economic Assessment of the Property	2
GEOLOGICAL FIELDWORK	3
GENERAL GEOLOGY	3
PROPERTY GEOLOGY	3
CONCLUSIONS AND RECOMMENDATIONS	5
APPENDIX A -Analytical Procedures	6
COST STATEMENT	9
QUALIFICATIONS	10
ATTESTATION	11

LIST OF FIGURES

<u>FIGURE NO.</u>	<u>TITLE</u>	<u>PAGE</u>
A-82-1	Location of the ASAP Claim	Foll. P.1
A-82-2	Sample Locations	Foll. P.3
A-82-3	Silver & Gold Geochemistry Results	Foll. P.3
A-82-4	Geology	Foll. P.4 /

INTRODUCTION

The ASAP claim consisting of 12 contiguous units is located in the Toodoggone area; 18 kilometres northwest of the Sturdee Valley airstrip and approximately 300 kilometres due north of Smithers, B.C.. (Figure A-82-1).

Access to the property is usually by fixed wing aircraft from Smithers or Terrace to Sturdee Valley airstrip and by helicopter from there.

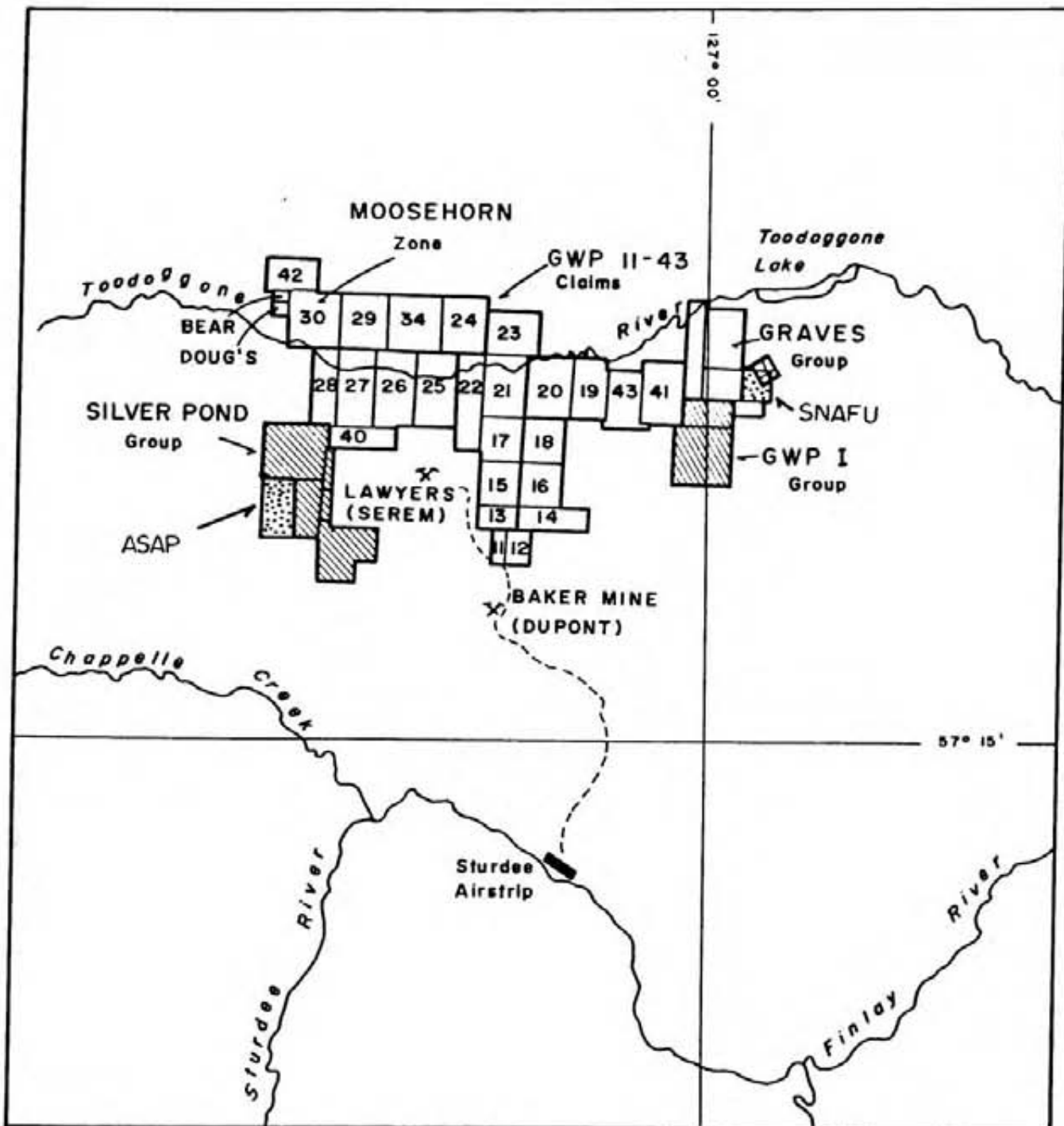
Lawyers Creek marks the approximate location of the westernmost claim line. The claim covers a densely forested, gently sloping, west facing hillside. The elevation difference between the highest and lowest points on the claims is at most 200 metres.

Work done on the claims in July consisted of geological mapping and rock sampling.



PROPERTY DEFINITION

History

Exploration history in the Toodoggone district dates back to the 1930's when placer gold operations were active in the area. Widespread gossans in the region created interest in the 1960's when companies were actively pursuing porphyry copper and molybdenum deposits. Partially as a result of the porphyry exploration programs, anomalous gold and silver mineralization was discovered in several areas, one being the Baker Mine, which has been in production since early 1981. Significant gold discoveries have been made in recent years with the ongoing development of the Lawyers and Cliff Creek prospects by S.E.R.E.M., (which lie in close proximity to and less than 2 kilometres due east of the ASAP claim), and by several other companies which had



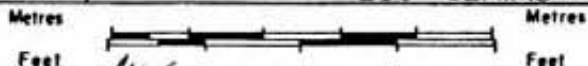
LEGEND

-  100% Great Western Petroleum
-  Toodoggone Joint Venture



**GREAT WESTERN
PETROLEUM CORPORATION**

LOCATION OF GWP 1-43, DOUG'S,
BEAR, SILVER POND & GRAVES.
ASAP, SNAFU & GWP 200 CLAIMS



MAPPED BY: <i>ALC</i>	SCALE: 1: 250,000	DRAWING NUMBER
DRAWN BY: D.L.Y	DATE: JAN 1982	FIGURE: A-82-1
REVISED: OCT. 82	N.T.S. 94 E	

major exploration programs taking place in 1981 and 1982. Part of the area covered by the claims was originally held by Kennco Exploration in the early 1970's.

In 1981, the area immediately east and adjoining the ASAP claim was optioned by Great Western Petroleum Corporation from Charles Kowall and the claims were collectively called the Silver Pond Group. Work done on this group of claims and fractions can be found in 1980 and 1981 Assessment Reports, submitted to the B.C. Ministry of Mines. In 1982, the B.C. Department of Mines sponsored a masters student, (Larry Dicoe), to do a detailed map of the rock alteration found on the Silver Pond Group of claims. This data should be available within the next few months.

List Of Claims

<u>CLAIM NAME</u>	<u>RECORD NO.</u>	<u>UNITS</u>	<u>DUE DATE</u>
ASAP	4732	12	Aug. 23, 1983

Refer to Figure A-82-1 for location of the claim.

Owner and Operator

The claim is owned outright by Great Western Petroleum Corporation and is operated by that company.

Economic Assessment of the Property

The claims are strategically located close to DuPont's, Baker, gold/silver mine and the Lawyers gold deposit which is actively being developed by S.E.R.E.M.. Vehicles can be driven over the tundra-like terrain from the Lawyers property to the Silver Pond Group of claims and

from there it would take little work to construct a road to the ASAP claim.

Favourable gold and silver rock geochemical values (up to 1450 ppb for gold and 117.0 ppm for silver), are associated with quartz veins and a silicified zone in Middle Toodoggone rocks. The geology has "earmarks" for a similar type deposit to the Lawyers property.

GEOLOGICAL FIELDWORK

Geology of the ASAP claim was mapped on a scale of 1:10,000 in conjunction with prospecting and rock geochemical sampling in selected areas. Outcrop on the claim is restricted to one prominent ridge which parallels the eastern most claim boundary. A total of 9 rock and 1 soil sample were collected within the boundaries of the claim from a total area of about 50 hectares. Samples were sent to Min-En Laboratories for gold and silver geochemical analysis. Refer to Appendix A for analytical procedures.

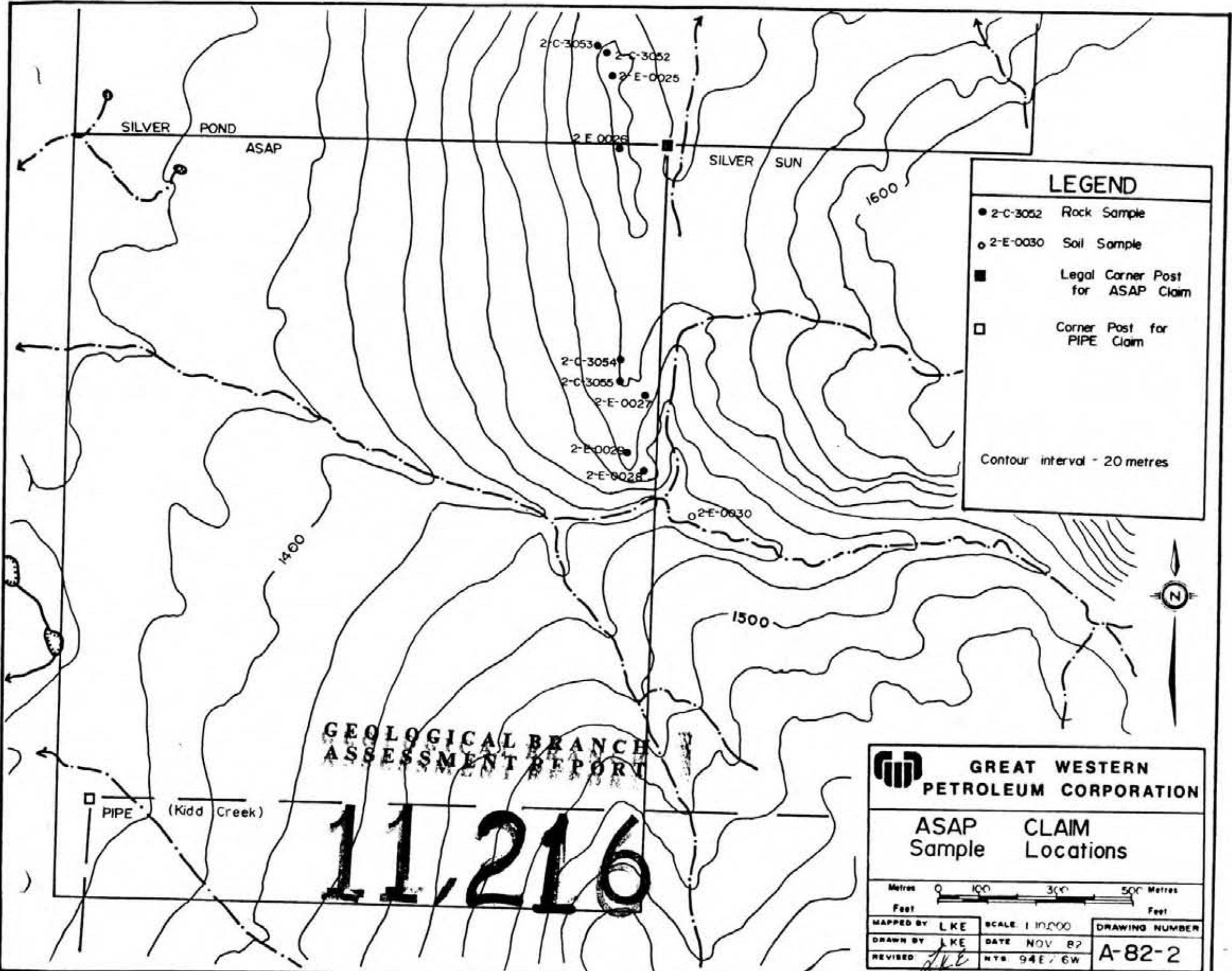
For control, a 1:10,000 scale topographic map was used as a base. Geology and geochemical results are plotted on Figures A-82-2 to 4.

GENERAL GEOLOGY

The ASAP claim lies within the eastern margin of the Intermountain Belt and is entirely underlain by volcanic rocks of the Middle Toodoggone assemblage. (Early Jurassic age.).



PROPERTY GEOLOGY

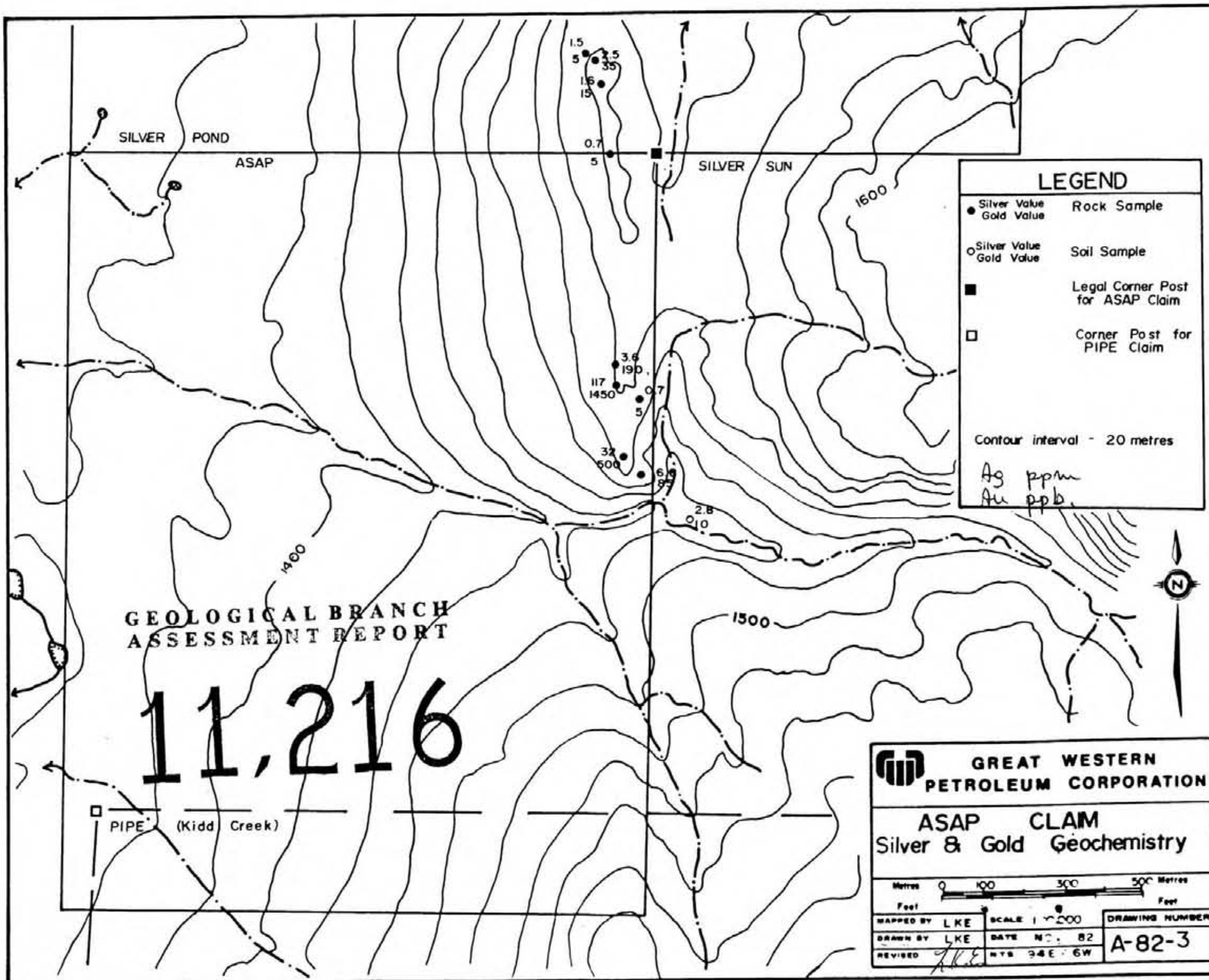
The prominent ridge of the ASAP claim which parallels the eastern most claim boundary is principally underlain by interbedded grey, pink, purple, and green ash flow and ash fall crystal tuffs of the Middle



GEOLOGICAL BRANCH
ASSESSMENT REPORT

11,216

 GREAT WESTERN PETROLEUM CORPORATION		
ASAP CLAIM Sample Locations		
		
MAPPED BY LKE DRAWN BY LKE REVISED <i>AKL</i>	SCALE 1:10,000 DATE NOV 82 NTS 94E/6W	DRAWING NUMBER A-82-2



GEOLOGICAL BRANCH
ASSESSMENT REPORT

11,216

LEGEND

- Silver Value
● Gold Value Rock Sample
- Silver Value
○ Gold Value Soil Sample
- Legal Corner Post
for ASAP Claim
- Corner Post for
PIPE Claim

Contour interval - 20 metres

Ag ppm
Au ppb

GWP GREAT WESTERN
PETROLEUM CORPORATION

ASAP CLAIM
Silver & Gold Geochemistry

Metres 0 100 300 500 Metres
Feet 0 100 300 500 Feet

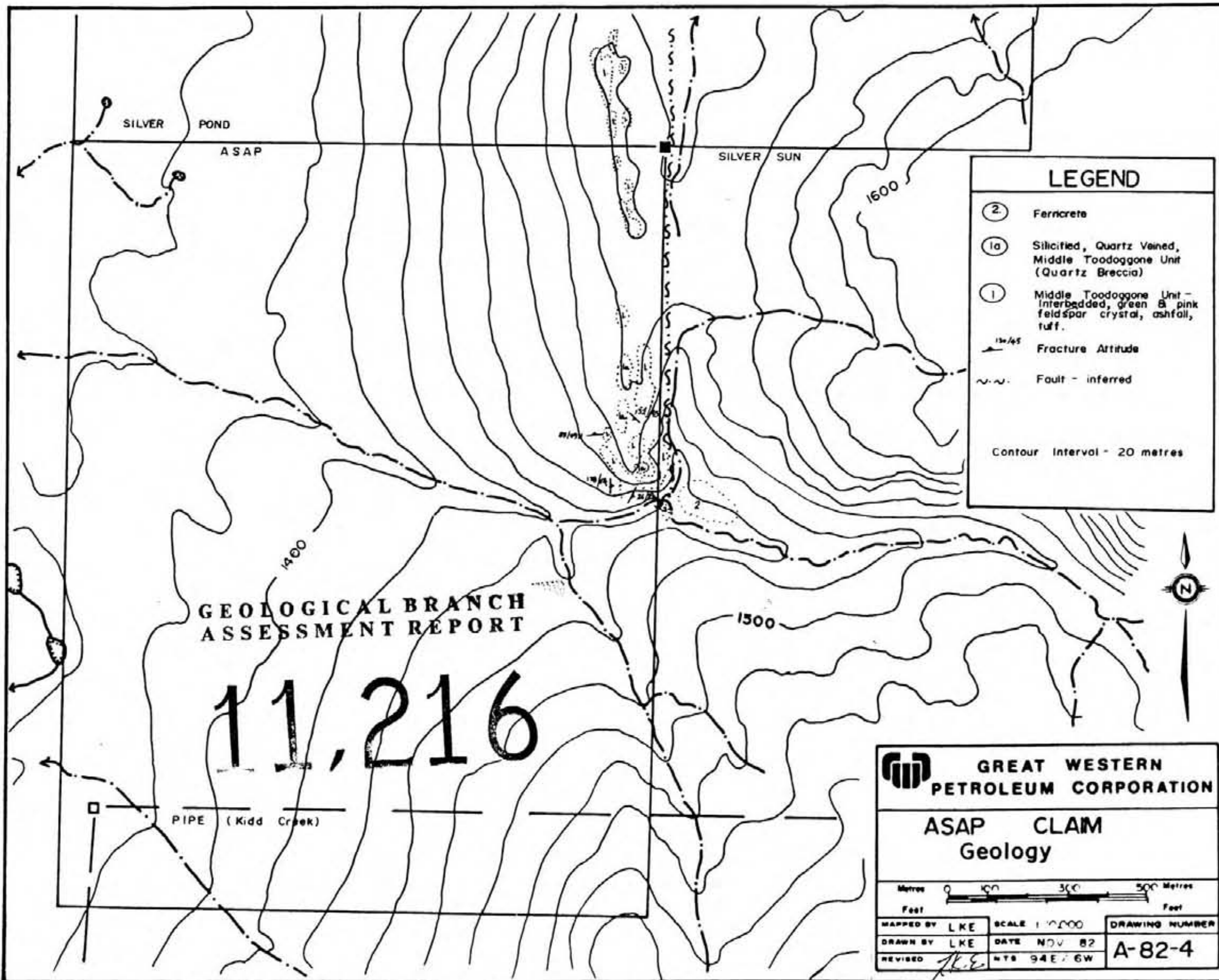
MAPPED BY LKE	SCALE 1:2000	DRAWING NUMBER
DRAWN BY LKE	DATE NOV. 82	A-82-3
REVISED LKE	NYB 94E-6W	

Toodoggone volcanic assemblage. Compositions of the different volcanic layers vary only slightly with the coarse grained constituents being primarily potassium feldspar, quartz eyes and hornblende phenocrysts. The fine grained groundmass which is responsible for the various colours of the different volcanic beds, weathers to a distinctive pink colour, probably due to pervasive hematization of the rock. The weathered surface of the rock is usually pock marked due to feldspars weathering out.

Hand specimens of the rock appear very fresh and well indurated. Alteration consists of minor epidote and calcite veining, biotized or chloritized hornblende phenocrysts and kaolinized and hematized feldspars. At the south end of the long narrow ridge, the rocks have been highly silicified and fractures filled with many narrow quartz veins forming a stockwork of sorts. Manganese staining is present along many fracture surfaces.

Just east of the ASAP ridge, a distinct gully marks the claim boundary of the ASAP claim and the Silver Sun claim. Rocks on the Silver Sun claim are distinctly more altered than those on the ASAP claim and it is thought by the author that a fairly large fault runs through the gully which divides the two claims. This fault is plotted on Figure A-82-4. No bedding attitudes were observed on the claims.

One mineralized area was noted on the claim during the brief visit in July. Anomalous gold and silver values occur in a silicified quartz stockwork area at the south end of the prominent ridge. Refer to Figures A-82-3 and 4. Mineralization in this area is similar to that found in the Lawyers, quartz amethyst gold breccia zone. Minor disseminated pyrite and specular hematite are present in the fresh broken rock, however no gold or silver values are associated with this type of mineralization.



**GEOLOGICAL BRANCH
ASSESSMENT REPORT**

11,216

LEGEND

- ② Ferricrete
- ①a Silicified, Quartz Veined, Middle Toodoggone Unit (Quartz Breccia)
- ① Middle Toodoggone Unit - interbedded, green & pink feldspar crystal, ashfall, tuff.
- ↗ 15-45 Fracture Attitude
- ~ Fault - inferred

Contour Interval - 20 metres

**GWP GREAT WESTERN
PETROLEUM CORPORATION**

**ASAP CLAM
Geology**

Metres 0 100 300 500 Metres
Feet 0 100 300 500 Feet

MAPPED BY LKE	SCALE 1:2000	DRAWING NUMBER
DRAWN BY LKE	DATE NOV 82	A-82-4
REVISED <i>LKE</i>	NTS 94E/6W	

CONCLUSIONS AND RECOMMENDATIONS

Anomalous gold and silver values are associated with a silicified stockwork zone in Middle Toodoggone volcanics. The favourable geology of this area is comparable to the Lawyers, quartz amethyst gold breccia zone.

Detailed prospecting and mapping is warranted over the entire claim block and selected areas should be soil sampled. Trenching and blasting should be done in known anomalous areas found to date.

APPENDIX 'A'

Analytical Procedures

APPENDIX 'A'

ANALYTICAL PROCEDURES

Samples are processed by Min-En Laboratories Ltd. in North Vancouver employing the following procedures:

After drying the samples at 95°C soil and stream sediment samples are screened by 80 mesh sieve to obtain the minus 80 mesh fraction for analysis. The rock samples are crushed by a jaw crusher and pulverized by ceramic plated pulverizer.

1.0 gram of the samples are digested for six hours with HNO_3 and HClO_4 mixture.

After cooling samples are diluted to standard volume. The solutions are analyzed by Atomic Absorption Spectrophotometers.

Copper, Lead, Zinc and Silver are analyzed using the CH_2H_2 - Air flame combination on these sample solutions.

For gold geochemical samples, a suitable weight 5.0 or 10.0 grams are pretreated with HNO_3 and HClO_4 mixture.

After pretreatments the samples are digested with Acua Regia solution, and after digestion the samples are taken up with 25% HCl to suitable volume.

At this stage of the procedure copper, silver and zinc can be analyzed from suitable aliquot, by Atomic Absorption Spectrophotometric procedure.

Further oxidation and treatment of a least 75% of the original sample solutions are made suitable for extraction of gold with Methyl Iso-Butyl Ketone.

With a set of suitable standard solutions, gold is analyzed by Atomic Absorption instruments. The obtained detection limit is 5 ppb.

COST STATEMENT

1). Wages

<u>Name</u>	<u>Per Diem Rate</u>	<u>Specific Dates</u>	<u>No. Days</u>	<u>Amount</u>
N. Cairra (geologist)	\$105.00	July 30, 1982	1	\$105.00
L. Eccles (geologist)	130.00	July 30, 1982 Oct. 25, 26, 1982	3	390.00

2). Transportation

A. Helicopter Charter:

<u>Company</u>	<u>Invoice No.</u>	<u>Date</u>	<u>Hours</u>	<u>\$/Hr.</u>	<u>Amount</u>
Airlift Corporation	1021	July 30, 1982	0.6	\$525	\$315.00

3). Camp Costs

\$50.00 per man per day - 2 man days \$100.00

4). Laboratory Costs

9 rock, 1 soil, geochemically analyzed for gold and silver by Min-En Laboratories in North Vancouver : File No. 2-467, August 10, 1982.

9 x 9.50 ea. for rocks
1 x 7.85 ea. for soils

Total \$93.25

5). Report and Drafting

\$500.00

TOTAL 1503.25

QUALIFICATIONS

I, LOUISE K. ECCLES, do hereby certify that:

1. I am a geologist residing in Vancouver, British Columbia and am employed by Great Western Petroleum Corporation.
2. I am a graduate of the University of British Columbia with a B.Sc. (honors), degree in geology.
3. I have practised my profession in geology continuously for the past six years in British Columbia, Ontario, Yukon and Northwest Territories.
- 4). On July 30, 1982, a field program of rock sampling, prospecting, and geological mapping was carried out on the ASAP claim on behalf of Great Western Petroleum Corporation.



Louise K. Eccles
Geologist

ATTESTATION

I, NICHOLAS C. CARTER, of Victoria, British Columbia, do hereby certify that:

1. I am a practising geologist, registered with the Association of Professional Engineers of British Columbia since 1966.
2. I am a graduate of the University of New Brunswick with a B.Sc. degree, (1960); Michigan Technological University with a M.Sc. degree, (1962); and the University of British Columbia with a Ph.D. degree, (1974).
3. I have practised my profession in British Columbia and Eastern Canada and the Western United States for the past 22 years.
4. I personally oversaw the geological program carried out on the ASAP claim and will attest to the authenticity of the data contained in this report.



N.C. Carter Ph.D. P.Eng.

N.C. Carter
Ph.D., P.Eng.