

83-#193-#11287

ASSESSMENT REPORT
ON A
PROGRAM OF DIAMOND DRILLING
ON THE
ORO #1 - 4 MINERAL CLAIM GROUP
RECORD NOS. 2882 - 2885 INCLUSIVE
CARIBOU CREEK - TILlicUM MTN AREA
KOOTENAY LAND DISTRICT
SLOCAN MINING DIVISION
BURTON, BRITISH COLUMBIA

N. Lat. 50°00'30"

W. Long. 117°47'00"

8-K-4W

for

DORADO RESOURCES LTD.
Suite 340
1414 - 8th Street SW
Calgary, Alberta

Owner: L. Kiss

by

DONALD W. TULLY, P.ENG.

GEOLOGICAL BRANCH
ASSESSMENT REPORT

11,287

May 20, 1983

West Vancouver, B.C.

TABLE OF CONTENTS

	<u>Page</u>
INTRODUCTION.....	1
SUMMARY AND CONCLUSIONS.....	1
PROPERTY - LOCATION, ACCESS, PHYSIOGRAPHY AND ENVIRONMENTAL CONSIDERATIONS.....	2
CLAIMS.....	3
HISTORY - PREVIOUS DEVELOPMENT.....	3
REFERENCES.....	4
REGIONAL AND LOCAL GEOLOGICAL SETTING.....	5
RESULTS OF THE DIAMOND DRILL PROGRAM.....	6
TIME-COST DISTRIBUTION.....	10
RECOMMENDATIONS.....	11
CERTIFICATE.....	12

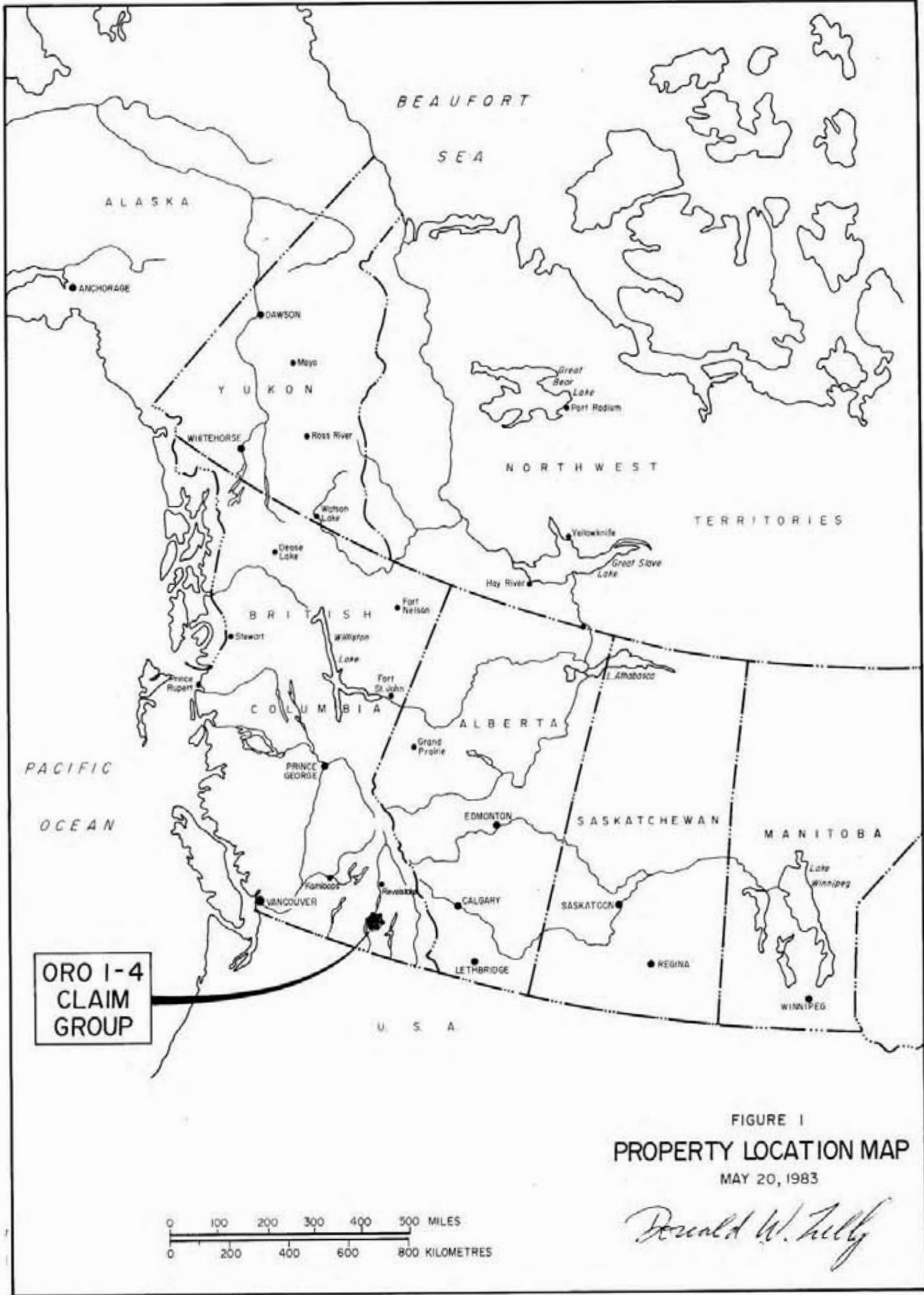
MAPS

Figure 1 - Location Map.....	(Frontispiece)
Figure 2 - Area Map.....	(Follows page 1)
Figure 3 - Property Location Map.....	(Follows page 2)
Figure 4 - Topographic Map (Scale 1-50,000).....	(Follows page 3)
Figure 5 - Claim Plan.....	(Follows page 4)
Figure 6 - Regional Geology (After Brown, Mathews and Read).....	(Follows page 5)
Figure 7 - Plan of D.D. Holes and Surface Anomaly Zones.....	(In Pocket)
Figure 8 - Section Thru D.D.Hole 83-1.....	(In Pocket)
Figure 9 - Section Thru D.D.Hole 83-2.....	(In Pocket)

APPENDIX

Log of D.D. Holes 83-1, 83-2

Assay Certificates #8301 - 2154	} D.D. Core
#8302 - 1858	
#83 - 0032	} D.D. Sludges
#83 - 0047	
#83 - 0080	



**ORO 1-4
CLAIM
GROUP**

FIGURE 1
PROPERTY LOCATION MAP
MAY 20, 1983

Donald W. Zilly

0 100 200 300 400 500 MILES
0 200 400 600 800 KILOMETRES

INTRODUCTION

1.

This Assessment report was prepared pursuant to a request by the Directors of Dorado Resources Ltd., Suite 340, 1414 - 8th Street, S.W., Calgary, Alberta.

The purpose of this report is to summarize the results of a program of diamond drilling on the ORO claim group performed during the period January 12 - 22, 1983.

A program of further diamond drilling testing is recommended.

SUMMARY AND CONCLUSIONS

The ORO property comprises four mineral claims having an area of approximately 205 acres (± 83 hectares).

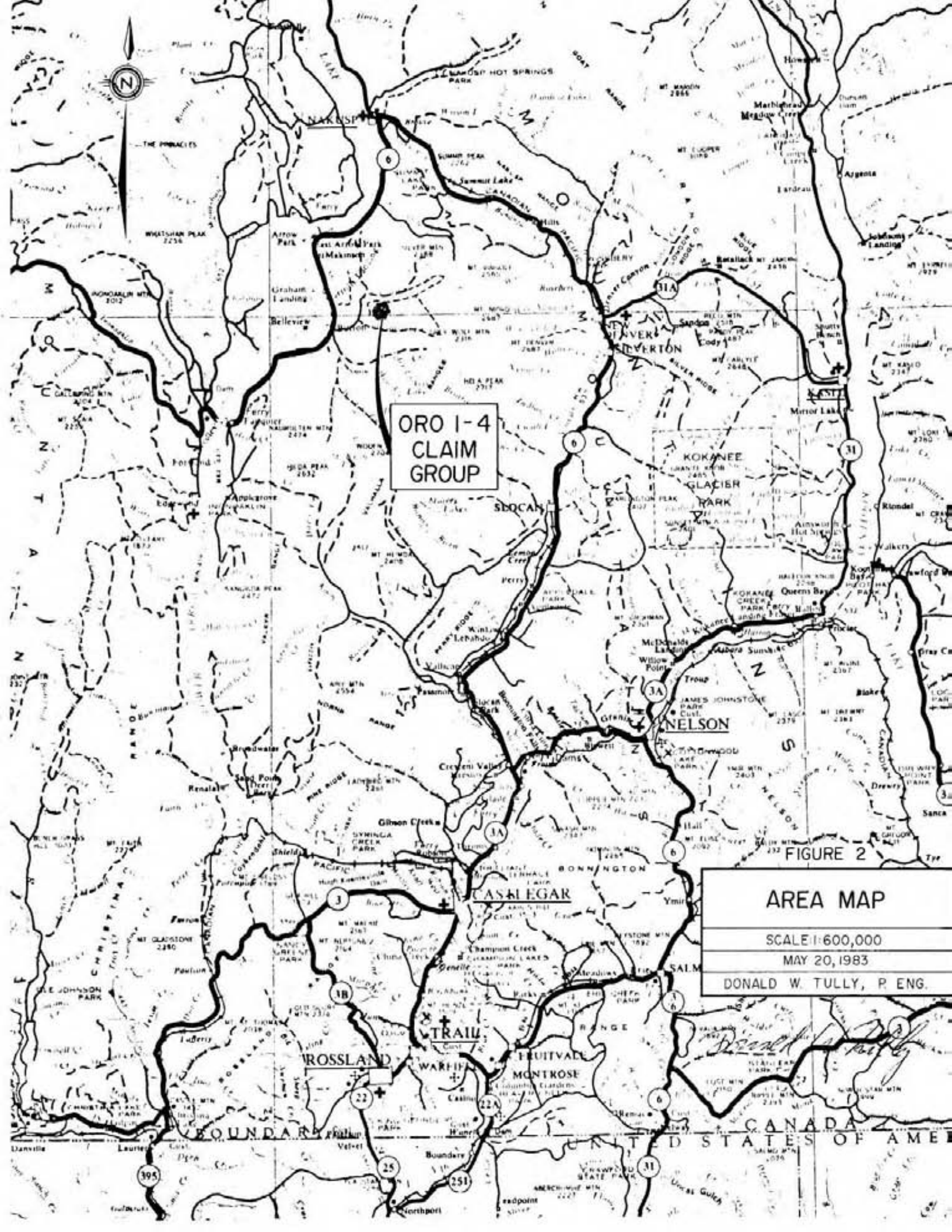
The ground is located in the Kootenay Land District about seven kilometres east of the hamlet of Burton, British Columbia.

The road distance from Burton to the property is thirteen kilometres.

Skarn, amphibolite, diorite and granitic intrusives underlie the claim area.

Two NQ core size (48 mm) diamond drill holes totaling 373.78 metres (1,226 feet) were drilled towards geochemically anomalous zones of gold and copper values. Both diamond drill holes failed to reach the objective as a result of faulted ground conditions.

However, a brecciated vein zone of quartz, pyrrhotite and pyrite with minor scheelite was encountered in a skarn host rock in both drill holes. This vein zone occurs



ORO 1-4
CLAIM
GROUP

FIGURE 2

AREA MAP
SCALE 1:600,000
MAY 20, 1983
DONALD W. TULLY, P. ENG.

Donald W. Tully

CANADA
UNITED STATES OF AMERICA

in the apex of a north-south-trending magnetic anomaly area of substantial proportions (Figure 7).

Modest gold values were obtained. The intersection in DDH #83-1 assayed 0.010 ozs/gold/st over a core width of 1.22 metres and the same zone in DDH #83-2 assayed 0.046 ozs/gold/st over a core width of 1.07 metres. A third gold zone is indicated.

Further diamond drilling exploration is recommended to test the gold and copper geochemical anomalies and also the magnetic anomaly zone on the claim area.

PROPERTY - LOCATION, ACCESS, PHYSIOGRAPHY
AND ENVIRONMENTAL CONSIDERATIONS

The ORO #1 - 4 mineral claim group consists of four contiguous two-post mineral claims situated on the northwest slope of Tillicum Mtn some 30 kilometres southeast of Nakusp, British Columbia.

Access is by logging roads from Burton on Hwy 6, a road distance of 13 km.

A north-facing slope prevails over the claim area. Several small creeks drain the ground towards Caribou Creek about a kilometre to the north.

The overburden on the ORO 1 - 4 claim area is relatively shallow.

Elevations vary over the property from about 2,500 to 4,300 feet above sea-level.

The ground is not considered to be sensitive in the environmental sense.

CLAIMS

The ORO #1 - 4 claim group is located in the Slo-can Mining Division.

Information on file with the Gold Commissioner at Kaslo, British Columbia is as follows:

<u>Claim Name</u>	<u>Record No.</u>	<u>Expiry Date</u>	<u>Recorded Holder</u>
ORO #1 - 4	2882 - 2885	May 25, 1983	Les Kiss

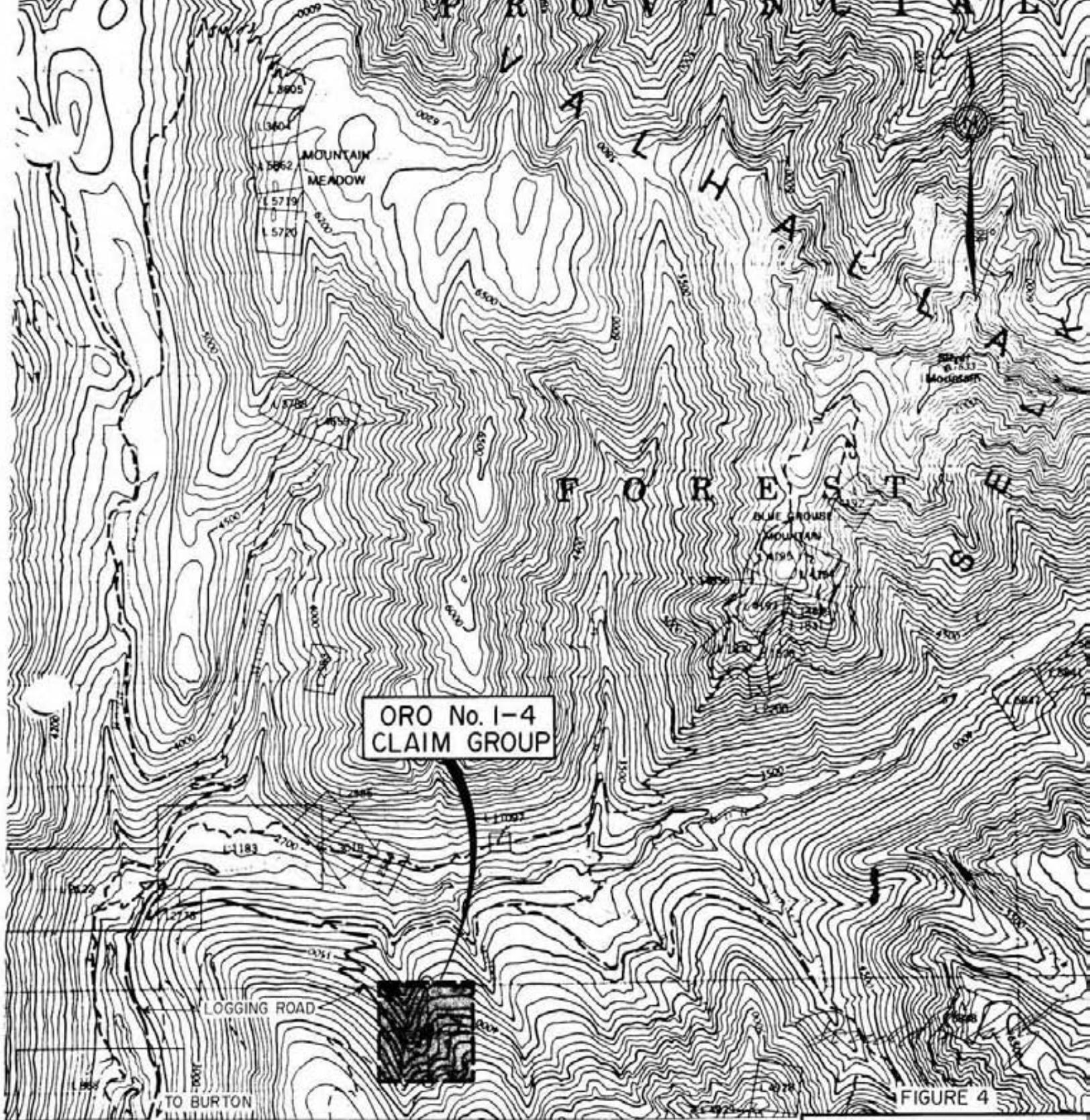
The claims are shown on British Columbia Mineral Titles Map M82-K-4W (Figure 5).

A survey of the location line of the claim group is recommended.

HISTORY - PREVIOUS DEVELOPMENT

Logging operations were carried out over the area now held by the ORO claims several years ago. One of the loggers now living in Burton reported finding a rust-filled trench in the area of the ORO claims. As a result of this information the claims were staked by L. Kiss and subsequently optioned to Dorado Resources Ltd. A search by the writer for the former trenching was unsuccessful.

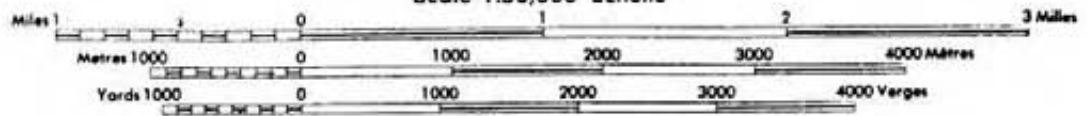
During the period October 24 to December 13, 1982, Strato Geological Engineering Ltd. did magnetometer, VLF - electromagnetic and CEM electromagnetic geophysical surveys and a program of geochemical soil sampling over the claim



TOPOGRAPHIC MAP
 (AFTER 82-K-4)
 SLOCAN M.D.
 MAY 20, 1983
 Donald W. Tully, P. ENG.

NAKUSP
 KOOTENAY LAND DISTRICT
 BRITISH COLUMBIA

Scale 1:50,000 Échelle



1/2 inch = 1 mile
 1/2 centimètre = 1 kilomètre
 1/2 pouce = 1 yard
 1/2 mètre = 100 centimètres
 1/2 yard = 36 pouces
 1/2 kilomètre = 1000 mètres
 1/2 yard = 36 pouces
 1/2 kilomètre = 1000 mètres
 1/2 yard = 36 pouces

TE DES SIGNES, VOIR AU VERSO

area. The results showed a distinct magnetic anomaly in the southeast sector of the property and interesting values in gold and copper from the geochemical soil survey in the central area of the claims. Electromagnetic geophysical results showed four north-northwest trending anomalous zones adjacent to and flanking the magnetically anomalous areas.

Shaw Diamond Drilling Ltd., Kamloops, British Columbia, drilled two NQ core size diamond drill holes to test geochemical anomalies gold and copper. Neither of these holes reached their objective as a result of faulted ground conditions but did find a vein zone carrying modest gold values associated with quartz and pyrrhotite.

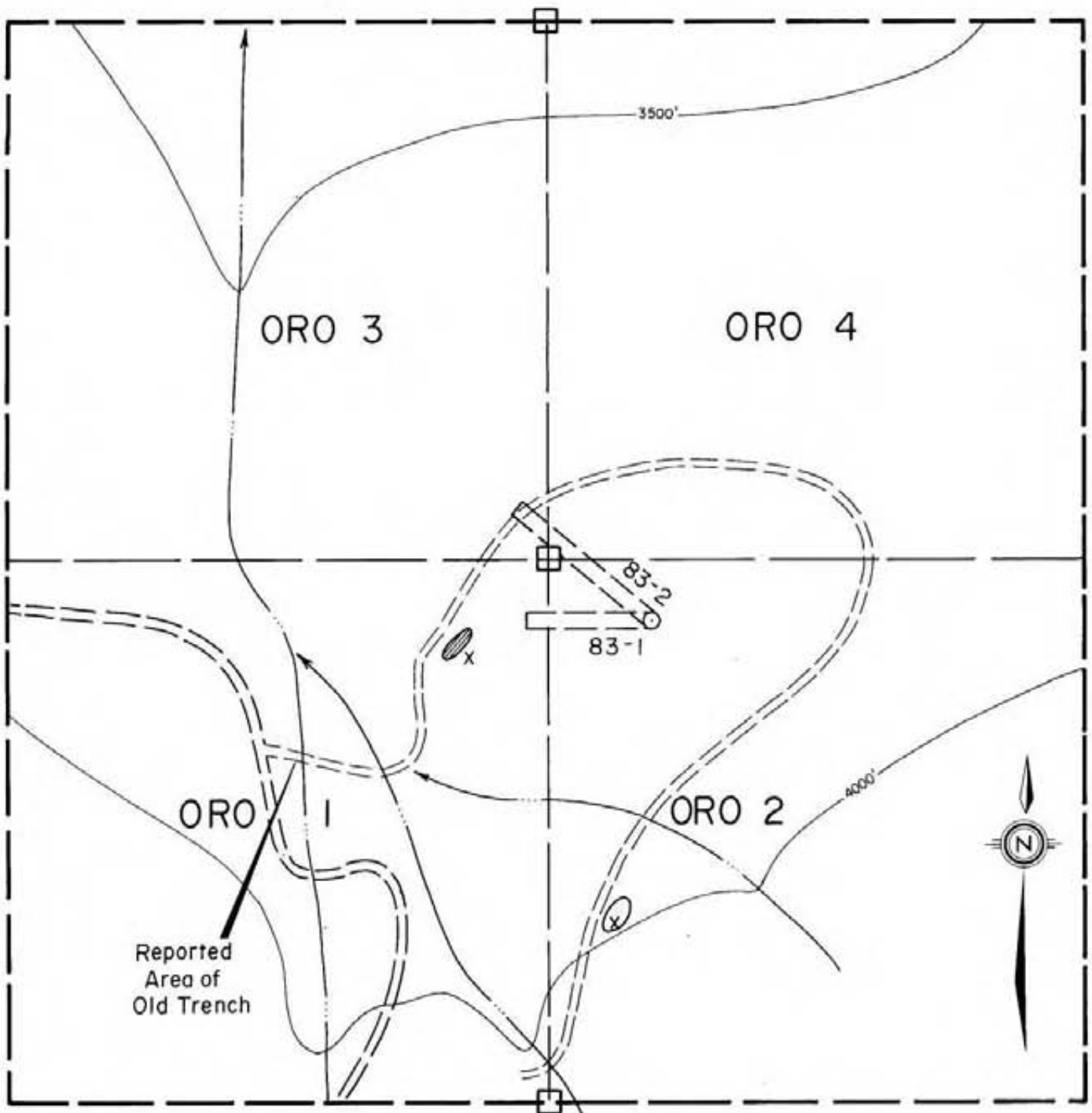
A total of 373.78 metres (1,226 feet) were drilled in this program during the period January 13 - 22, 1983.

REFERENCES

The following publications contain information pertinent to the ORO #1 - 4 claim area:

Annual reports of the Minister of Mines British Columbia for the years:

1902 - p. 164	1919 - p. 138
1903 - p. 150	1920 - p. 134
1904 - p. 146	1921 - p. 163
1905 - p. 247	1922 - p. 218
1906 - p. 151, 249	1923 - p. 234
1907 - p. 105	1924 - p. 204
1908 - p. 111, 247	1927 - p. 232
1910 - p. 114	1928 - p. 357
1911 - p. 170	1929 - p. 343
1912 - p. 160	1930 - p. 262
1915 - p. 175	1932 - p. 180
1916 - p. 207, 507	1934 - p. A25
1917 - p. 174, 196	1935 - p. E24
1918 - p. 158, 199	



LEGEND

- CLAIM POST (APPROX. LOCATION)
- 3500- ELEVATION CONTOUR (APPROX.)
- CREEK
- == NEW LOGGING ROAD
- == OLD LOGGING ROAD
- ▨ SKARN
- AMPHIBOLITE
- X SAMPLE LOCATION

NOTE: All locations subject to survey

Donald W. Tully

FIGURE 5

SKETCH PLAN

**ORO No. 1-4
CLAIM GROUP**

SCALE: 1:50

MAY 20, 1983

Donald W. Tully, P. Eng.

Geological Survey of Canada, Bulletin 161 and Map 1234A

Report on the ORO #1-4 mineral claim group by Donald W. Tully, P. Eng., and dated October 4, 1982

Report on a magnetometer, VLF-electromagnetic and Geochemical Soil Sampling Program on the ORO #1-4 claim group, by Donald W. Tully, P.Eng., and dated November 29, 1982

Report on a CEM electromagnetic survey on the ORO #1-4 mineral claim group by Donald W. Tully, P.Eng., and dated December 29, 1982

REGIONAL AND LOCAL GEOLOGICAL SETTING

The general geology of the area is shown on Geological Survey of Canada Map 1234A.

Three lithological units have so far been recognized over the ORO claims.

Skarn-type alteration is prevalent in sediments and amphibolitic rocks engulfed in an intrusive complex belonging to the Lower Caribou Stock over the claim area. The intrusives vary from granite to quartz diorite in composition.

A tentative geologic timetable for the claim area is as follows:

<u>Formation</u>	<u>Description/Event</u>	<u>Age</u>
Sand, gravel and glacial debris	Unconsolidated	Quaternary
	(Erosional unconformity)	
Mineralization, Quartz veining, Metamorphism	Pyrite, pyrrhotite, sphalerite, galena, chalcopyrite and gold, skarn, calc-silicates and quartz veins and veinlets	Tertiary (?)
	(Folding, faulting, and related tectonic activity)	

FIGURE 6

REGIONAL GEOLOGY

(AFTER BROWN, MATTHEWS AND READ)

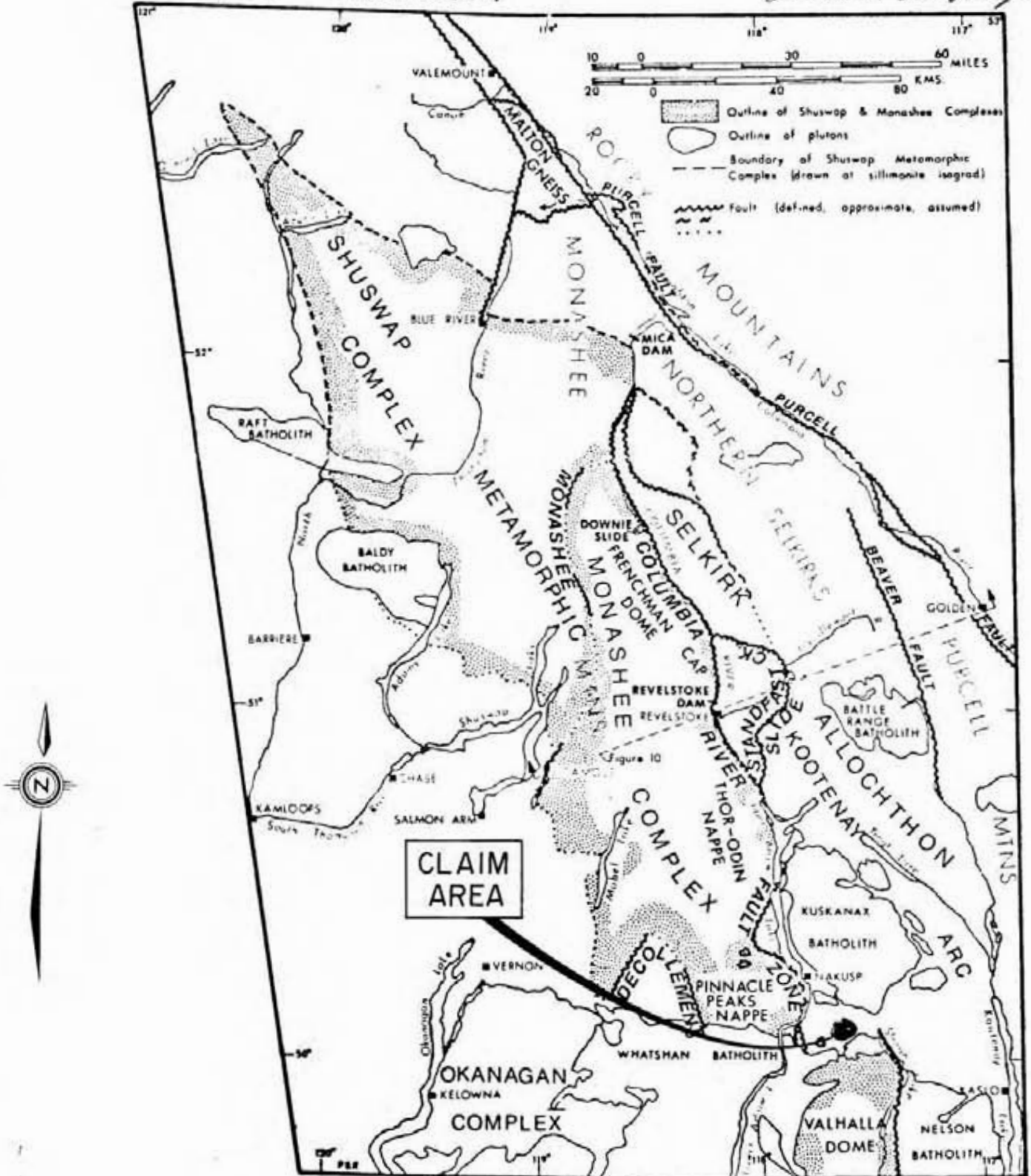
SCALE AS SHOWN

MAY 20, 1983

DONALD W. TULLY, P. ENG.

Brown, Matthews and Read.

Donald W. Tully



<u>Formation</u>	<u>Description/Event</u>	<u>Age</u>
Lower Caribou Stock intrusions	Alaskite-like dykes, granite, quartz diorite, hornblende-biotite rich phase of granodiorite and quartz monzonite (Folding, faulting and re- lated tectonic activity associated with the Lower Caribou Stock intrusions)	Late Jurassic or Early Cretaceous
Sediments	Greywacke and highly al- tered breccia-like hori- zons	Pre-Cretaceous (?)

Structurally, the trend of the lineal and planar elements observed in diamond drill core and the bedrock outcrops is northwesterly. The formational dips are steeply westward.

RESULTS OF THE DIAMOND DRILL PROGRAM

Two NQ core size (48 mm) diamond drill holes totaling 373.78 metres (1,226 feet) were drilled in the period January 13 - 22, 1983. Both D.D. Holes 83-1 and 83-2 were drilled from the same drillsite location as shown on Figure 7.

The purpose of the diamond drill holes was to check an indicated zone of geochemical values of gold and copper found during the soil sampling survey.

Strong faulted-ground conditions were encountered in about the same horizon in both diamond drill holes and as a result neither hole reached the intended objective.

The diamond drill hole sludge water was collected at ten foot intervals from each hole and assayed. 109 sludge

samples were collected and analyzed for copper, lead, zinc, silver and tungsten in parts per million. Forty-eight of these sludge samples were checked for gold content in parts per billion. The results are appended to this report.

Twenty-eight split-core samples were taken and assayed and the results are also appended herewith.

D.D. Hole 83-1 (Figures 7, 8 and APPENDIX)

Direction	-	270°
Dip	-	50°
Depth	-	165.24 m. (542 feet)
Casing	-	12.2 m.

This hole penetrated 12.2 metres of overburden and entered a diorite-amphibolite complex containing inclusions of skarniferous sediments. The hole continued in this rock to 28.2 metres where a zone of fine quartz veinlets with pyrite and pyrrhotite and limonite stain was intersected on the diorite-metasediment skarn contact. This zone of quartz veinlets contained a small amount of gold. The split core sample, between 28.20 - 29.42 m. (1.22 metres), assayed:

0.010 ozs/gold/st
 0.05 ozs/silver/st
 0.003% copper

The hole continued in the metasedimentary skarn horizon to 45 m. At this point a band of diorite dykes was intercepted over a core length of some 19 m. to a depth of about 64 m. The skarn zone, locally intruded by narrow diorite dykes, continued in the hole to 133 m. This section was marked by frequent specks of scheelite. A band of amphibolite was encountered in the section between 133 - 156 m. From this point, skarn and breccia continued to the bottom

of the hole at 165 m., where an open fault was intersected and caused the hole to be abandoned.

In order to continue the drill test, the drill was turned in the direction of 305° and Hole #83-2 was commenced.

The log of diamond drill hole 83-1 is appended to this report.

D.D. Hole 83-2 (Figures 7, 9 and APPENDIX)

Direction	-	305°
Dip	-	45°
Depth	-	208.54 m. (684 feet)
Casing	-	17.0 m.

Hole 83-2 penetrated 17 metres of overburden and entered skarn bedrock to a depth of 20 metres where a fresh-appearing biotite-hornblende type quartz diorite dyke was intersected to 25 m. Skarn continued in the hole to a depth of 38.87 m. where a brecciated silicified zone of quartz veinlets, pyrite and fine seams of massive pyrrhotite as distinct from the disseminated grains of pyrrhotite found in the skarn horizons throughout the section between the casing and a depth of 44 m. in this hole. This zone of brecciated quartz veinlets and sulphide mineralization occurs on a contact with a diorite dyke and continued between 38.87 - 39.94 m. (1.07 metres). Three split-core samples taken from this section assayed as follows:

<u>Sample No.</u>	<u>Intercept</u> <u>(metres)</u>	<u>Gold</u> <u>ozs/st</u>	<u>Silver</u> <u>ozs/st</u>	<u>Copper</u> <u>%</u>
3435	0.31	0.036	0.20	Tr
3386	0.30	0.106	0.10	-
3436	0.46	0.014	0.10	Tr

The average gold content of this section was 0.046 ozs/gold/st over a core length of 1.07 metres.

Hole 83-2 continued in diorite to 39.6 metres. Skarn intruded by narrow dykes of diorite occurred in the hole to 47 m., where a zone of amphibolite and diorite dykes were found down to 56 m. Skarn, intruded by diorite dykes, was intersected to 82 m., where indications of a second zone of gold values were found over a core intercept of 2.7 metres and assayed:

<u>Sample No.</u>	<u>Sample Width</u>	<u>Gold ozs/st</u>	<u>Silver ozs/st</u>
3388	1.5 m.	0.030	Tr.
3389	1.2 m.	0.005	Tr

Metasedimentary skarn, intruded by diorite dykes and having bands of amphibolite, continued in the hole to 95 m., where a fault zone was intersected. This fault zone occurred in the hole to a depth of 109 m. Skarn was predominant in the remainder of this hole to 173 m., where a strong fault carrying "gouge" and cave was found. The hole continued in skarn in faulted ground to 184 m. where a diorite dyke was intersected. The zone of faults still continued in to the diorite and the hole had to be abandoned at a depth of 208.54 m.

Gold mineralization, albeit modest in quantity as encountered in the first drill test, does occur on the property.

Ono # 1-4
Claim Group

TIME-COST DISTRIBUTION

DORADO RESOURCES LTD.

Statement of Exploration and Development

April 30, 1983

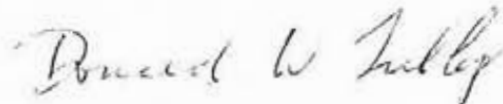
	<u>Total</u>	<u>Purchase of Int.</u>	<u>Engineering</u>	<u>Travel</u>	<u>Geolog- ical</u>	<u>Tele phone</u>	<u>Office</u>	<u>Mapping & Reports</u>	<u>Lab.</u>	<u>Drilling</u>
October, 1982										
Don Tully Engineering	*\$ 10,000.00									
Jan. '83										
Les Kiss	4,000.00	\$4,000.00								
Jan. '83										
Don Tully Engineering *	4,438.30		\$ 925.00	\$ 1,329.66	\$ 3,000.00	\$ 38.65		\$ 766.95		
			1,038.18	1,136.97				772.07		
			600.00	281.92		39.58		2,572.07	\$ 1,937.25	
Jan. '83										
Acme Analytical	1,109.00								1,109.00	
Strato Geological	7,397.58				6,926.00			471.58		
Feb. '83										
Don Tully Engineering	4,297.07		1,838.42	2,450.80				7.85		
G. & D. Drilling	53,017.55									\$30,650.00
costs pertaining to trucking etc.										22,367.55
April '83										
Don Tully Engineering	4,615.76		1,914.50	1,444.49		141.19	\$ 72.00	1,043.58		
March, '83										
Strato Geological	15,762.34			2,347.69	13,414.65					
	<u>\$ 104,637.60</u>	<u>(\$4,000.00)</u>	<u>\$6,316.10</u>	<u>\$ 8,991.53</u>	<u>\$23,340.65</u>	<u>\$219.42</u>	<u>\$ 72.00</u>	<u>\$5,634.10</u>	<u>\$ 3,046.25</u>	<u>\$53,017.55</u>
	<u>(4,000.00)</u>									
	<u>\$ 100,637.60</u>									

Auto Signature
Secretary of Company

RECOMMENDATIONS

A diamond drill test of the indicated zones of gold mineralization both in the soil anomaly and in the magnetic anomaly zones, is recommended.

Respectfully submitted,

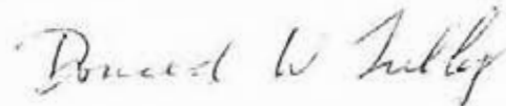


Donald W. Tully, P. Eng.,

RECOMMENDATIONS

A diamond drill test of the indicated zones of gold mineralization both in the soil anomaly and in the magnetic anomaly zones, is recommended.

Respectfully submitted,



Donald W. Tully, P. Eng.,

CERTIFICATE

I, DONALD WILLIAM TULLY, of the Corporation of West Vancouver, Province of British Columbia, hereby certify as follows:

- 1) I am a Consulting Geologist with an office at Suite 1205, 555 - 13th Street, West Vancouver, British Columbia.
- 2) I am a registered Professional Engineer in the Provinces of Ontario and British Columbia.
- 3) I graduated with a degree of Bachelor of Science, Honours Geology, from McGill University in 1943.
- 4) I have practiced my profession for thirty-seven years.
- 5) I have no direct, indirect or contingent interest in the ORO #1 - 4 mineral claim group, subject of this report, or in the securities of Dorado Resources Ltd., nor do I intend to receive any interest.
- 6) This report dated May 20, 1983 is based upon diamond drill supervision and core logging I did on January 11, 16, 20 and February 17, 1983, a study of the available reports and published information on the subject claims and personal communications.
- 7) I have consulted on the BALL 11, SEAN and PAUL mineral claim group that is located within ten kilometres of the claims, subject of this report, during the past five years.
- 8) Written permission is required from the writer to publish this report dated May 20, 1983 in any Prospectus or Statement of Material Facts.

DATED at West Vancouver, British Columbia this 1st day of June, 1983.



DONALD W. TULLY, P. ENG.

APPENDIX

DON TULLY ENGINEERING LTD.
SUITE 1205, 555 - 13TH STREET
WEST VANCOUVER, BRITISH COLUMBIA
V7T 2N8

HOLE No. 83-1

CLAIM ORO #2 and 1

LOC'n 95 metres SE IP Claim Post
PROPERTY

COMPANY ORARO RESOURCES LTD.
DIAMOND DRILL CORE LOG - SAMPLE RECORD

HOLE DEPTH 165.24m. (542 ft.)
CORE SIZE 48 mm
HOLE DIRECTION 270°
DIP 50°

collar ELEV. 4100' PAGE No. 1 of 4

LENGTH IN METRES		DESCRIPTION	MINERALIZATION	SAMPLE No.	ASSAYS						W (ppm)
FROM	TO				From	To	Length Metres	AU OZS	AG OZS	BY %	
0	12.2	Casing									
	18.9	Diorite (amphibolite?) broken ground,	limonite stain								
	20.4	Diorite (amphibolite?) 2-6 cm dykes	felsite @ 19.2, shearing @ 45° c/a								
	21.3	Diorite contact phase, fine diss.	pyrrhotite (po)								
	21.6	Diorite dyke, fine py + po		3376		0.3	0.002	Tr		2	
	26.6	Metasediment skarn, foliated @ 60° c/a,	broken core 21.9 - 23.4 m., with fine quartz veinlets								
	28.20	Diorite contact phase									
	29.42	Metasediment skarn, limonite stain, a	zone of fine quartz veinlets with py. and po. @ 29.3m	3437		1.22	0.010	0.05		0.003	
	33.5	Metasediment skarn, foliated @ 45° c/a,	fine pyrite & po.								
	35.3	Metasediment skarn, foliated, specks	scheelite & po.								
	35.6	Metasediment skarn, foliated, specks	scheelite & po.	3380		0.3	0.008	0.05		2	
	36.7	Metasediment skarn, foliated, specks	scheelite & po.								
	36.9	Metasediment skarn, foliated, specks	scheelite & po.	3378		0.2	0.002	Tr		2	
	39.3	Diorite dyke, carries rounded skarn	inclusions								
	40.1	Dark mauve cast skarn, foliated and	banded @ 20-30° c/a								
	40.3	As above sample w/scat. grains py+specks	scheelite	3377		0.2	0.008	Tr		2	

LEGEND NOTE: CORE STORED AT COLLAR OF HOLE

C/A - CORE AXIS
Bx - BRECCIATED
N/A - NOT ASSAYED
Diss. - DISSEMINATED

f.g. - fine-grained
m.g. - med. grained

py - PYRITE
Mg - MAGNETITE
Pb - GALENA
Zn - SPHALERITE
Po - PYRRHOTITE
Cupy - Chalcopyrite

CORE Logged by: D.W. TULLY, P.ENG.
CORE Split by: John Gibson
HOLE STARTED: January 13, 1983
HOLE FINISHED: January 16, 1983

HOLE No 83-1

CLAIM ORO #2 and 1

Loc'n 95 metres SE IP Claim Post
PROPERTY

COMPANY DORADO RESOURCES LTD.
DIAMOND DRILL CORE LOG - SAMPLE RECORD

HOLE DEPTH 165.24m. (542 ft.)
CORE SIZE 48 mm
HOLE DIRECTION 270°
DIP 50°

collar ELEV. 4100' PAGE No. 2 of 4

LENGTH IN METRES		DESCRIPTION	MINERALIZATION	SAMPLE No.	ANALYSIS						W (ppm)
FROM	TO				From	To	Length Metres	AU g/g	AG g/g	SH %	
40.3	41.7	As above sample, foliated @ 45° c/a									
	42.9	Skarn and diorite contact phase									
	44.2	Dark mauve cast skarn as above type, banded @ 45-60° c/a									
	45.1	Dark mauve cast skarn as above type, specks of scheelite		3379			0.9	0.003	Tr		2
	45.4	Dark mauve cast skarn as above type									
	46.0	Diorite-contact phase with skarn									
	52.1	Dark mauve cast skarn type, banded									
	57.4	Diorite dyke									
	60.1	Dark mauve cast skarn type as above, but brecciated									
	64.6	Diorite as above with pyrite grains @ 62.2 m.									
	67.2	Dark mauve cast skarn breccia									
	67.5	Dark mauve cast skarn breccia, with specks scheelite		3381			0.3	0.008	0.05		2
	69.8	Dark mauve cast skarn, foliated @ 50-70° c/a, pyrite grains @ 66.1 m.									
	70.7	Dark mauve cast skarn, massive									
	75.1	Dark mauve cast skarn, foliated @ 50° c/a, py. @ 71.9 m.									
	75.4	Dark mauve cast skarn, py. grains @ 75.3 m.									
	77.7	Dark mauve cast skarn									
	78.0	Dark mauve cast skarn with specks scheelite		3382			0.3	0.002	Tr		2

LEGEND

C/A - CORE AXIS
Bx - BRECCIATED
NA - NOT ASSAYED
Dis. - DISSEMINATED
f.g. - fine-grained
m.g. - med. grained

py - PYRITE
Mg - MAGNETITE
Pb - GALENA
Zn - SPHALERITE
Po - PYRRHOTITE
Cuv - Chalcovrite

NOTE: CORE STORED AT COLLAR OF HOLE

CORE Logged by: D.W. TULLY, P.ENG.
CORE Split by: John Gibson
HOLE STARTED: January 13, 1983
HOLE FINISHED: January 16, 1983

HOLE No 83-1

CLAIM ORO #2 and 1

LOC'n 95 metres SE IP Claim Post
PROPERTY

COMPANY ----- DORADO RESOURCES LTD.

DIAMOND DRILL CORE LOG - SAMPLE RECORD

HOLE DEPTH 165.24m. (542 ft.)

CORE SIZE 48 mm.

HOLE DIRECTION 270°

DIP 50°

collar ELEV. 4100' PAGE No. 3 of 4

LENGTH IN METRES		DESCRIPTION	MINERALIZATION	SAMPLE No.	ASSAYS					W (ppm)
FROM	TO				From	To	Length Metres	AU OZS	AG OZS	
78.0	78.8	Diorite dyke with skarn inclusions								
	85.9	Skarn as above type								
	86.2	Skarn as above type with several specks	scheelite	3383			0.3	0.002	Tr	42
	90.5	Skarn as above type with disseminated	pyrite							
	95.7	Skarn as above type with scattered specks	scheelite							
	116.1	Skarn as above type with specks scheelite @ 110.3, 110.9,								
		111.5 m.								
	122.5	Diorite dyke, medium-grained, fine quartz veinlets, diss.								
		py. & specks scheelite @ 118.2, 119.2, 122.2 m.								
	125.3	Diorite - skarn contact phase, specks	scheelite @ 123.1 m.							
	125.9	Diorite dyke with pink felsite dykes, sheared @ 40° c/a								
		with disseminated pyrite @ 124.6 m.								
	133.8	Skarn breccia with specks scheelite and pyrite @ 127.1,								
		128.3, 128.6, 133.8 m.								
	155.7	Amphibolite (diorite phase) med. grain, sheared @ 20-30°								
		c/a with specks scheelite @ 135.7, 137.2, 147, 153.4 m.								
	156.4	Skarn, silicified and brecciated								
	158.2	Skarn, dark grey								
	159.1	Skarn breccia								

LEGEND

NOTE: CORE STORED AT COLLAR OF HOLE

C/A - CORE AXIS

Bx - BRECCIATED

NA - NOT ASSAYED

Diss. - DISSEMINATED

f.g. - fine-grained

m.g. - med. grained

py - PYRITE

Mg - MAGNETITE

Pb - GALENA

Zn - SPHALERITE

Po - PYRRHOTITE

Cupy - Chalcopyrite

CORE Logged by: D.W. TULLY, P. ENG.

CORE Split by: John Gibson

HOLE STARTED: January 13, 1983

HOLE FINISHED: January 13, 1983

DON TULLY ENGINEERING LTD.
SUITE 1205, 555 - 13TH STREET
WEST VANCOUVER, BRITISH COLUMBIA
V7T 2N8

HOLE No. 83-2

COMPANY DORADO RESOURCES LTD.
DIAMOND DRILL CORE LOG - SAMPLE RECORD

HOLE DEPTH 200.54 (664')
 CORE SIZE 48 mm
 HOLE DIRECTION 305°
 DIP 45°

CLAIM ORD #2 and 1

Loc'n
 PROPERTY 95 metres SE IP claim post

collar ELEV. 4100' PAGE No. 1 of 5

LENGTH IN METRES		DESCRIPTION	MINERALIZATION	SAMPLE No.	ASSAYS					W (ppm)
FROM	TO				From	To	Length Metres	AU OZS	AG OZS	
0.0	17.0	Casing								
	20.1	Skarn, mauve cast to grey, massive, quartz veinlets, fine disseminated pyrite								
	20.8	Skarn as above, 20% quartz veinlets, diss. py. + po.		3384		0.7	0.002	Tr.		2
	25.0	Diorite, biotite - HB type with quartz veinlets, specks of scheelite @ 24.8								
	29.4	Skarn, mauve cast, foliated @ 60-75° c/a, diss. py. + po.								
	31.5	Diorite as last section above								
	38.87	Skarn zone with fine diorite dykes (1 - 6 cm.)								
	39.18	Skarn diss. py. + po., specks scheelite @ 34.7, 36.8 + quartz veinlets with po. + py.		3435		0.31	0.036	0.20	Tr.	} Gold Aver. 0.046 oz. 1.07 m.
	39.48	Brecciated siliceous zone, fine seams (1-2 mm.) po. + py.		3386		0.30	0.106	0.10		
	39.94	Diorite dyke with fine quartz veinlets + fine po. + py.		3436		0.46	0.014	0.10	Tr.	
	39.6	Diorite dyke with skarn inclusions								
	40.8	Skarn as above								
	44.0	Diorite dyke								
	44.5	Skarn, foliated @ 55° c/a, 20% quartz veinlets, fine massive po. + py. seams (1-2 mm.)		3387		0.5	0.002	Tr.		2
	46.3	Skarn grading to amphibolite								

LEGEND NOTE: CORE STORED AT COLLAR OF HOLE

C/A - CORE AXIS
 Bx - BRECCIATED
 NA - NOT ASSAYED
 Diss. - DISSEMINATED
 f.g. - fine-grained
 m.g. - med. grained
 py - PYRITE
 Mg - MAGNETITE
 Pb - GALENA
 Zn - SPHALERITE
 Po - PYRRHOTITE
 Cpy - Chalcopyrite

CORE Logged by: D.W. Tully, P. Eng.
 CORE Split by: J. Gibson
 HOLE STARTED: January 16, 1983
 HOLE FINISHED: January 22, 1983

HOLE No. 83-2

COMPANY ----- DORADO RESOURCES LTD.
DIAMOND DRILL CORE LOG - SAMPLE RECORD

HOLE DEPTH 200.54 (684')
 CORE SIZE 48 mm.
 HOLE DIRECTION 305°
 DIP 45°

CLAIM DRD #2 and 1
 Loc'n 95 metres SE IP claim post
 PROPERTY

collar ELEV. 4100' PAGE No. 2 of 5

LENGTH IN METRES		DESCRIPTION	MINERALIZATION	SAMPLE No.	ASSAYS					W (ppm)
FROM	TO				From	To	Length Metres	AU OZS	AG OZS	
46.3	46.9	Diorite dyke								
	47.5	Skarn as above, fine py. + po.								
	49.0	Diorite dyke								
	55.1	Skarn grading to amphibolite								
	56.0	Diorite dyke								
	56.7	Amphibolite intruded by diorite dykes								
	67.6	Skarn grading to amphibolite, foliated @ 60-70° c/a scattered fine quartz veinlets, fine diss. py. + po.								
	67.9	Skarn, grey to pink altered, garnets, fine py. + po.								
	71.0	Skarn grading to amphibolite, sheared @ 45° c/a, fine quartz veinlets, py. + seams po. @ 68.9								
	71.3	Diorite dyke								
	73.7	Skarn, broken ground, sheared @ 40° c/2, sparse py. + po.								
	75.6	Diorite dyke, specks scheelite @ 75.6, fine qtz veinlets								
	82.3	Skarn grading to amphibolite, sparse py. + po.								
	83.8	Skarn as above, 1-3 mm. seams massive py.po. (5-10%)	3388			1.5	0.030	Tr.		2
	85.0	Skarn as above, 1-3 mm. seams massive py.po. (5-10%)	3389			1.2	0.005	Tr.		2
	85.9	Skarn as above								
	89.3	Diorite dyke with skarn inclusions								

LEGEND NOTE: CORE STORED AT COLLAR OF HOLE

C/A - CORE AXIS
 Bx - BRECCIATED
 NA - NOT ASSAYED
 Diss. - DISSEMINATED
 f.g. - fine-grained
 m.g. - med. grained
 py - PYRITE
 Mg - MAGNETITE
 Pb - GALENA
 Zn - SPHALERITE
 Po - PYRRHOTITE
 Cpy - Chalcopyrite

CORE Logged by: D.W. Tully, P.Eng.
 CORE Spill by: J. Gibson
 HOLE STARTED: January 16, 1983
 HOLE FINISHED: January 22, 1983

HOLE No. 83-2

COMPANY DORADO RESOURCES LTD.

HOLE DEPTH 208.54 (684')

CLAIM ORO #2 and 1

DIAMOND DRILL CORE LOG - SAMPLE RECORD

CORE SIZE 48 mm.

Loc'n 95 metres SE IP claim post

HOLE DIRECTION 305°

DIP 45°

collar ELEV. 4100' PAGE No. 3 of 5

LENGTH IN METRES		DESCRIPTION	MINERALIZATION	SAMPLE No.	ANALYTES					W (ppm)
FROM	TO				From	To	Length Metres	AU OZS	AG OZS	
89.3	89.6	Skarn, very blocky ground								
	91.1	Diorite (fresher phase than variety noted above) M. gr. carries inclusions of amphibolite								
	95.1	Skarn, slight mauve cast, sheared @ 45° c/a								
	95.4	Fault zone @ 20° c/a in skarn - no apparent displacement								
	99.6	Skarn breccia, scattered garnets in zones @ 96.3 & 100.6m								
	100.8	Fault zone in skarn - amphibolite complex (displacement?)								
	100.5	Amphibolite - skarn complex								
	101.8	Fault zone @ 50° c/a								
	102.1	Amphibolite - skarn complex, broken ground								
	103.6	Diorite as per type in upper section of this hole (slightly magnetic)								
	106.0	Skarn with diss. po. at contact area with diorite								
	106.4	Fault zone @ 40-60° c/a in skarn (no apparent displacement)								
	107.0	Zone of skarn, amphibolite and diorite dykes								
	107.62	Fault zone, broken ground, limonite stain								
	108.54	Zone of skarn, quartz veinlets + py.	3397		0.92	0.002	Tr		Tr	
	109.15	Fault zone, broken ground, limonite stain								
	118.45	Skarn, slight mauve cast								

LEGEND

NOTE: CORE STORED AT COLLAR OF HOLE

C/A - CORE AXIS
 Bx - BRECCIATED
 NA - NOT ASSAYED
 Diss - DISSEMINATED
 f.g. - fine-grained
 m.g. - med. grained

py - PYRITE
 Mg - MAGNETITE
 Pb - GALENA
 Zn - SPHALERITE
 Po - PYRRHOTITE
 Cpy - Chalcopyrite

CORE Logged by D.W. Tully, P.Eng.
 CORE Split by J. Gibson
 HOLE STARTED: January 16, 1983
 HOLE FINISHED: January 22, 1983

HOLE No 83-2

CLAIM ORO #2 and 1

Loc'n 95 metres SE IP claim post
PROPERTY

COMPANY DORADO RESOURCES LTD.

DIAMOND DRILL CORE LOG - SAMPLE RECORD

HOLE DEPTH 208.54 (684')
CORE SIZE 48 mm.
HOLE DIRECTION 305°
DIP 45°

collar ELEV. 4100' PAGE No. 4 of 5

LENGTH IN METRES		DESCRIPTION	MINERALIZATION	SAMPLE No.	ASSAYS					W (ppm)		
FROM	TO				From	To	Length Metres	AU OZS	AG OZS		GM %	CU %
118.49	119.09	Skarn, quartz and disseminated pyrite		3398			0.60	0.002	Tr		Tr	
	119.82	Brecciated skarn, quartz veinlets + disseminated pyrite		3399			0.77	0.016	0.10		Tr	
	128.6	Skarn with breccia zones, garnets @ 120-123, broken ground										
	135.9	Amphibolite with quartz porphyroblasts in med. gr. matrix										
	140.7	Skarn with garnetiferous zones, (slightly magnetic ?)										
	141.4	Amphibolite as above										
	144.8	Skarn breccia										
	145.2	Alaskite										
	149.6	Amphibolite and skarn, slightly magnetic (?), broken ground and shearing @ 40° c/a										
	151.5	Amphibolite (?), slightly magnetic.										
	153.8	Fault zone with limonite stain										
	154.88	Skarn breccia with 5-10% disseminated po. + py.										
	156.10	Skarn breccia + diss. po. + py. + quartz veinlets + scheelite specks		3390			1.22	0.002	Tr		Tr	
	157.32	Skarn breccia + diss. po. + py. + quartz veinlets + Scheelite specks		3391			1.22	0.002	Tr		Tr	
	157.77	Skarn breccia + diss. po. + py. + quartz veinlets + Scheelite specks		3392			0.45	0.002	Tr		Tr	

LEGEND

NOTE: CORE STORED AT COLLAR OF HOLE

C/A - CORE AXIS
Bx - BRECCIATED
NA - NOT ASSAYED
Diss. - DISSEMINATED
f.g. - fine-grained
m.g. - med. grained

py - PYRITE
Mg - MAGNETITE
Pb - GALENA
Zn - SPHALERITE
Po - PYRRHOTITE
Cupy - Chalcopyrite

CORE Logged by: D.W. Tully, P.Eng.
CORE Split by: J. Gibson
HOLE STARTED: January 16, 1983
HOLE FINISHED: January 22, 1983

HOLE No 83-2

COMPANY ----- DORADO RESOURCES LTD.

HOLE DEPTH 208.54 (684')

CORE SIZE 48 mm.

HOLE DIRECTION 305°

CLAIM DRD #2 and 1

DIAMOND DRILL CORE LOG - SAMPLE RECORD

DIP 45°

Loc'n 95 metres SE IP claim post
PROPERTY

collar ELEV. 4100' PAGE No. 5 of 5

LENGTH IN METRES		DESCRIPTION	MINERALIZATION	SAMPLE No.	ASSAYS						W (ppm)
FROM	TO				From	To	Length Metres	AU OZS	AG OZS	SI %	
157.77	158.64	Skarn breccia + diss. po. + py. + quartz veinlets + Scheelite specks		3393			0.87	0.002	Tr	Tr	
	159.30	As above		3394			0.66	0.002	Tr	Tr	
	160.37	As above		3395			1.07	0.002	Tr	Tr	
	165.24	As above									
	166.46	As above + strong scheelite		3396			1.22	0.002	Tr	Tr	
	173.48	Sediments - greywacke with detrital quartz grains									
	174.39	Fault zone with "gouge" in core									
	179.57	Sediments as above									
	180.18	Fault zone @ 30-40° c/a									
	184.45	Greywacke, bedding @ 70-80° c/a Broken ground, (Lost water in hole in this section)									
	186.74	Diorite, sheared @ 30-50° c/a									
	187.50	Fault zone, mud and "gouge" in core with 4cm granite dyke									
	190.09	Diorite (amphibolite ?) slightly magnetic, quartz metacrysts)									
	190.85	Fault zone									
	208.54	Diorite as above section with shearing @ 30-50° c/a									
		END OF HOLE									

LEGEND

NOTE: CORE STORED AT COLLAR OF HOLE

C/A - CORE AXIS
Bx - BRECCIATED
N.A. - NOT ASSAYED
Diss. - DISSEMINATED

f.g. - fine-grained
m.g. - med. grained

py - PYRITE
Mg - MAGNETITE
Pb - GALENA
Zn - SPHALERITE
Po - PYRRHOTITE
Cupy - Chalcopyrite

CORE Logged by: D.W. Tully, P.Eng.
CORE Split by: J. Gibson
HOLE STARTED: January 16, 1983
HOLE FINISHED: January 22, 1983



TO:
DON TULLY ENGINEERING LTD.
 205 - 555 - 13th Street
 West Vancouver, B.C.
 V7T 2N8
DORADO

General Testing Laboratories

A Division of SGS Supervision Services Inc.

1001 EAST PENDER ST., VANCOUVER, B.C., CANADA V6A 1W2
 PHONE (604) 254-1847 TELEX 04-507514 CABLE SUPERVISE

CERTIFICATE OF ASSAY

No.: 8301-2154 DATE: Feb. 7/83

We hereby certify that the following are the results of assays on: **DDH**

MARKED	GOLD	SILVER	Tungsten	XXX	XXX	XXX	XXX	XXX
	oz/st	oz/st	W (ppm)					
3376	0.002	trace	2	}	83-1			
3377	0.008	trace	2					
3378	0.002	trace	2					
3379	0.003	trace	2					
3380	0.008	0.05	2					
3381	0.008	0.05	2					
3382	0.002	trace	2					
3383	0.002	trace	42					
3384	0.002	trace	2					
3385	0.002	trace	2					
3386	0.106	0.10	2	}	83-2			
3387	0.002	trace	2					
3388	0.030	trace	2					
3389	0.005	trace	2					

L. Wong
 PROVINCIAL ASSAYER

REJECTS RETAINED ONE MONTH PULPS RETAINED THREE MONTHS ON REQUEST PULPS AND REJECTS WILL BE STORE FOR A MAXIMUM OF ONE YEAR
 1. REPORTS ARE THE CONFIDENTIAL PROPERTY OF CLIENTS. PUBLICATION OF STATEMENTS, CONCLUSION OR EXTRACTS FROM OR REGARDING OUR REPORTS IN NOT PERMITTED WITHOUT OUR WRITTEN APPROVAL. ANY LIABILITY ATTACHED THERETO IS LIMITED TO THE FEE CHARGED.

Analytical and Consulting Chemists, Bulk Cargo Specialists, Surveyors, Inspectors, Samplers, Weighers

MEMBER American Society For Testing Materials • The American Oil Chemists Society • Canadian Testing Association
 REFEREE AND/OR OFFICIAL CHEMISTS FOR National Institute of Oilseed Products • The American Oil Chemists' Society
 OFFICIAL WEIGHMASTERS FOR Vancouver Board Of Trade



TO:
DON TULLY ENGINEERING LTD.
 205 - 555 13th Street
 Vancouver, B.C.
 V7T 2N8

General Testing Laboratories
 A Division of SGS Supervision Services Inc.

1001 EAST PENDER ST., VANCOUVER, B.C., CANADA, V6A 1W2
 PHONE (604) 254-1847 TELEX 04-507514 CABLE: SUPERVISE

CERTIFICATE OF ASSAY

No.: 8302-1858 DATE: Feb. 24/83

We hereby certify that the following are the results of assays on: **Ore**

MARKED	GOLD	SILVER	Copper	XXX	XXX	XXX	XXX	XXX
	oz/st	oz/st	Cu (%)					
<u>DORADO RES. LTD.</u>								
3390 - A	0.002	trace	-	} 83-2				
3391	0.002	trace	-					
3392	0.002	trace	-					
3393	0.002	trace	-					
3394	0.002	trace	-					
3395	0.002	trace	-					
3396	0.002	trace	-					
3397	0.002	trace	-					
3398	0.002	trace	-					
3399	0.016	0.10	-					
400	0.002	0.05	0.004	} 83-1				
3435	0.036	0.20	-					
3436	0.014	0.10	-					
3437 - A	0.010	0.05	0.003					

REJECTS RETAINED ONE MONTH PULPS RETAINED THREE MONTHS ON REQUEST PULPS AND REJECTS WILL BE STORE FOR A MAXIMUM OF ONE YEAR

ALL REPORTS ARE THE CONFIDENTIAL PROPERTY OF CLIENTS. PUBLICATION OF STATEMENTS CONCLUSION OR EXTRACTS FROM OR REGARDING OUR REPORTS IS NOT PERMITTED WITHOUT OUR WRITTEN APPROVAL. ANY LIABILITY ATTACHED THERETO IS LIMITED TO THE FEE CHARGED

L. Wong

PROVINCIAL ASSAYER

Analytical and Consulting Chemists, Bulk Cargo Specialists, Surveyors, Inspectors, Samplers, Weighers

MEMBER American Society For Testing Materials • The American Oil Chemists Society • Canadian Testing Association
 REFEREE AND/OR OFFICIAL CHEMISTS FOR National Institute of Oilseed Products • The American Oil Chemists' Society
 OFFICIAL WEIGHMASTERS FOR Vancouver Board Of Trade

ICP GEOCHEMICAL ANALYSIS

A .500 GRAM SAMPLE IS DIGESTED WITH 3 ML OF 3:1:3 HCL TO HNO3 TO H2O AT 90 DEG.C. FOR 1 HOUR. THE SAMPLE IS DILUTED TO 10 MLS WITH WATER.
 THIS LEACH IS PARTIAL FOR: Ca,P,Mg,Al,Ti,La,Na,K,N,Ba,Sr,Cr AND B. ~~AN DETECTION 3 ppm.~~
 Au* ANALYSIS BY AA FROM 10 GRAM SAMPLE. SAMPLE TYPE - PULPS

Re-run for Au

DATE RECEIVED FEB 17 DATE REPORTS MAILED FEB 23/82 ASSAYER D. Toye DEAN TOYE, CERTIFIED B.C. ASSAYER

Sludge 83-1

DORADO FILE# 83-0032

D. DRILL
Sludge
Footage

PAGE# 1

SAMPLE #	CU ppm	PB ppm	ZN ppm	AG ppm	W ppm	Au* ppb
751	259	19	144	.6	41	-
752	150	13	75	.2	26	-
753	76	10	64	.3	6	-
754	58	10	68	.1	6	-
755	118	12	81	.3	24	-
756	734	8	540	.3	828	5
757	163	4	145	.2	175	5
759	101	8	110	.3	92	5
759	218	6	147	.3	173	25
760	199	8	116	.5	112	105
STD A-1	30	36	176	.2	2	-
761	95	7	65	.5	26	50
762	104	8	73	.5	36	35
763	164	8	112	.3	100	-
764	211	6	191	.1	218	-
765	64	7	105	.1	39	-
766	76	7	77	.2	24	-
767	65	8	105	.1	24	-
768	76	8	88	.1	15	5
769	212	9	55	.6	24	15
770	213	10	63	.7	15	5
771	154	7	86	.3	65	-
772	197	8	154	.2	233	-
773	91	8	95	.3	52	-
774	86	8	85	.1	40	-
775	69	6	69	.1	71	-
776	67	8	70	.1	121	-
777	63	9	69	.2	28	-
778	46	10	71	.1	10	-
779	51	6	68	.1	12	-
780	83	9	87	.1	45	-
781	61	10	64	.1	25	-
782	47	8	53	.2	16	-
783	61	6	69	.1	44	-
784	52	6	66	.1	37	-
785	78	7	81	.2	71	-
786	116	10	100	.2	93	-
787	40	7	55	.1	14	-

40-50
50-60
60-70
70-80
80-90
90-100
100-110
110-120
120-130
130-140
140-150
150-160
160-170
170-180
180-190
190-200
200-210
210-220
220-230
230-240



ICP GEOCHEMICAL ANALYSIS

A .500 GRAM SAMPLE IS DIGESTED WITH 3 ML OF 3:1:3 HCL TO HNO3 TO H2O AT 90 DEG.C. FOR 1 HOUR. THE SAMPLE IS DILUTED TO 10 MLS WITH WATER.
 THIS LEACH IS PARTIAL FOR: Ca, P, Mg, Al, Ti, La, Na, K, W, Ba, Si, Sr, Cr AND B. ~~AU DETECTION 3 ppm.~~ *Return Au*
 AU* ANALYSIS BY AA FROM 10 GRAM SAMPLE. SAMPLE TYPE - PULPS

DATE RECEIVED FEB 17 1983 DATE REPORTS MAILED Feb 23/83 ASSAYER *D. Toye* DEAN TOYE, CERTIFIED B.C. ASSAYER

83-2

DORADO RESOURCES RE-RUN AU FILE # 83-0080

*D. DRILL
 SLUDGE
 Footage
 500 - 510
 510 - 520
 550 - 560
 560 - 570
 570 - 580
 580 - 590
 590 - 600
 600 - 610*

SAMPLE #	CU ppm	PB ppm	ZN ppm	AG ppm	W ppm	Au* ppb
3419	276	8	45	2.2	49	5
3420	342	13	61	.6	26	5
3421	353	10	84	.6	81	-
3422	256	8	57	.1	38	-
3423	685	10	47	.3	34	-
3423 10X	63	1	6	.1	3	-
3424	200	4	58	.3	20	5
3425	235	3	53	.4	7	5
3426	434	18	131	.6	61	5
3427	240	12	84	.8	42	10
3428	104	10	66	.1	9	5
3429	533	20	79	.8	72	5
3430	279	15	80	.2	21	-
3431	68	8	65	.1	16	-
3432	47	11	71	.1	6	-
3433	48	13	67	.1	7	-
3434	44	15	69	.1	6	-
STD A-1	30	37	175	.2	2	-

ICP GEOCHEMICAL ANALYSIS

A .500 GRAM SAMPLE IS DIGESTED WITH 3 ML OF 3:1:3 HCL TO HNO3 TO H2O AT 90 DEG.C. FOR 1 HOUR. THE SAMPLE IS DILUTED TO 10 MLS WITH WATER.
 THIS LEACH IS PARTIAL FOR: Ca, P, Mg, Al, Ti, La, Na, K, W, Ba, Bi, Sr, Cr AND B. ~~DETECTION LIMIT~~ *Rather An*
 AU* ANALYSIS BY AA FROM 10 GRAM SAMPLE. SAMPLE TYPE - PULPS

DATE RECEIVED FEB 17 1983 DATE REPORTS MAILED *Feb 23/83* ASSAYER *D. Joyce* DEAN TOYE, CERTIFIED B.C. ASSAYER

83-2

DORADO RESOURCES RE-RUN AU FILE # 83-0047

*D. DRILL
Sludge
Footage*

SAMPLE #	CU ppm	PB ppm	ZN ppm	AG ppm	W ppm	Au* ppb
802	248	11	116	.1	38	-
803	166	9	68	.1	13	-
804	223	12	81	.1	15	-
805	195	10	69	.1	9	-
806	263	11	69	.2	48	-
807	124	9	73	.1	13	-
808	550	3	280	.1	357	-
809	283	14	130	.1	83	-
810	103	7	70	.1	45	-
811	64	5	64	.1	12	-
812	76	7	68	.1	11	-
813	103	7	60	.1	21	-
814	111	7	53	.1	7	-
815	120	6	56	.1	5	-
816	99	4	49	.1	8	-
817	103	6	65	.1	8	-
818	71	9	75	.1	14	-
819	252	9	40	.5	7	-
820	214	8	29	.7	5	-
821	350	9	46	1.2	6	125
822	118	8	56	.1	8	-
823	89	12	64	.1	45	-
824	56	11	61	.1	16	-
825	72	8	67	.1	29	-
3401	200	8	136	.1	42	-
3402	360	2	222	.1	339	135
3403	394	16	98	.3	48	-
3404	208	12	91	11.2	32	-
3405	171	9	82	.1	44	-
3406	395	9	183	.1	163	-
3407	450	18	79	.2	54	-
3408	404	16	79	.5	68	5
3409	403	17	89	.1	83	-
3410	681	21	78	.1	160	-
3411	204	17	69	.1	17	-
3412	247	22	63	.1	9	-
3413	228	10	43	.1	40	-
STD A-1	29	36	168	.1	2	-

*80-90
90-100
100-110
110-120
120-130
130-140
140-150
150-160
160-170
170-180
180-190*

270-280

330-340

390-400

#83-2

DORADO RESOURCES RE-RUN AU FILE # 83-0047

PAGE# 2

SAMPLE #	CU ppm	PB ppm	ZN ppm	AG ppm	W ppm	Au* ppb
3414	124	10	34	.1	10	-
3415	332	14	39	.2	9	-
3416	766	16	25	.1	26	5
3416 10X	92	5	5	.1	3	-
3417	886	18	24	.1	34	5
3417 10X	107	4	5	.1	5	-
3418	484	20	45	.2	9	5
STD A-1	28	34	164	.1	2	-

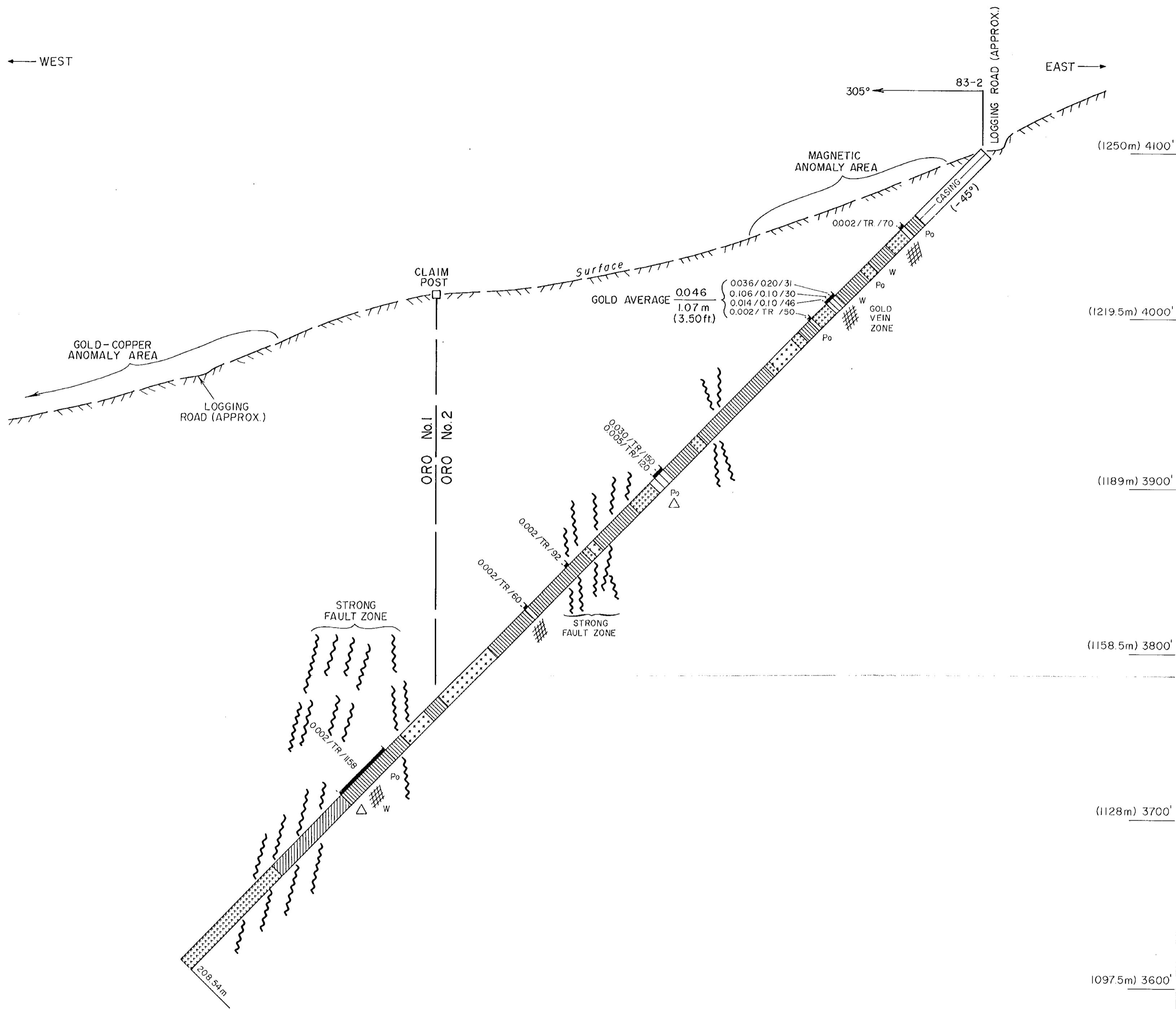
470-480

480-490

490-500

← WEST

EAST →



LEGEND

- △ PYRITE
- Po PYRRHOTITE
- W SCHEELITE
- // QUARTZ VEINLETS
- ASSAYS GOLD/SILVER/WIDTH (cm)
- [Dotted pattern] DIORITE
- [Horizontal lines] SKARN
- [Vertical lines] AMPHIBOLITE
- [Diagonal lines] SEDIMENTS

GEOLOGICAL BRANCH
 ASSESSMENT REPORT
11,287

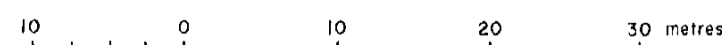


FIGURE 9

DORADO RESOURCES LTD.

D.D. HOLE 83-2

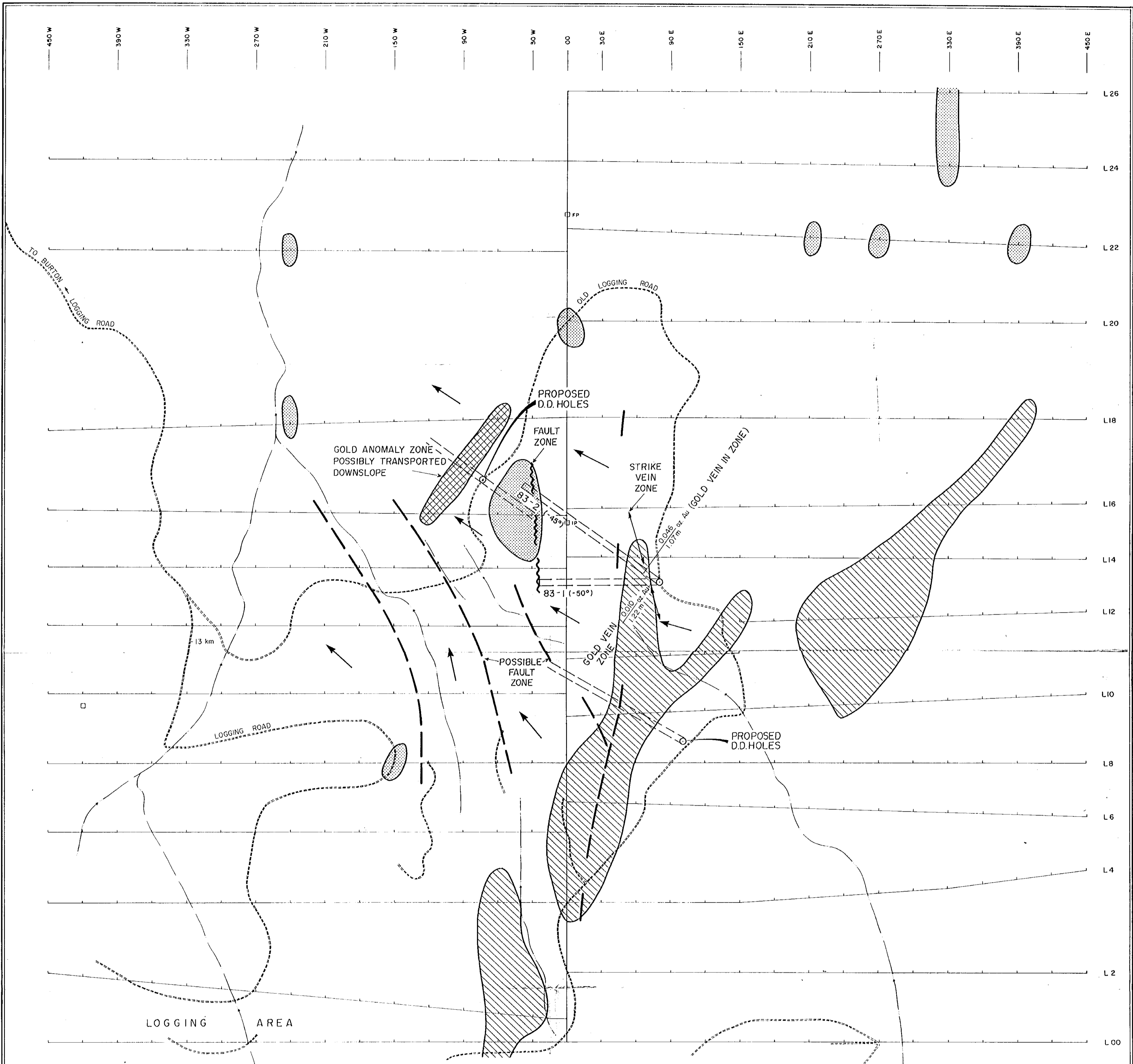
ORO 1-4 CLAIM GROUP

CARIBOU CREEK AREA
 SLOCAN MINING DIVISION
 BURTON, B.C.







MAY 20, 1983

DONALD W. TULLY, P. ENG.

Donald W. Tully
 NOTE: ALL LOCATIONS SUBJECT TO SURVEY



LEGEND

-  FAULT ZONE
-  STRONG VLF - EM CONDUCTOR ZONES
-  MAGNETIC ANOMALY AREAS (+1000 γ)
-  COPPER GEOCHEM ANOMALY AREAS (+60 ppm)
-  GOLD GEOCHEM ANOMALY (+40 ppb)
-  STEEP SLOPE

**GEOLOGICAL BRANCH
ASSESSMENT REPORT**

11,287

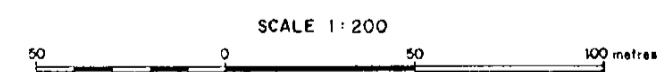


FIGURE 7

DORADO RESOURCES LTD.
PLAN OF D.D. HOLES
ORO 1-4 CLAIM GROUP
CARIBOU CREEK AREA SLOCAN MINING DIVISION BURTON, B. C.
TO ACCOMPANY A REPORT BY: DONALD W. TULLY, P. ENG.
MAY 20, 1983



Donald W. Tully
NOTE: ALL LOCATIONS SUBJECT TO SURVEY