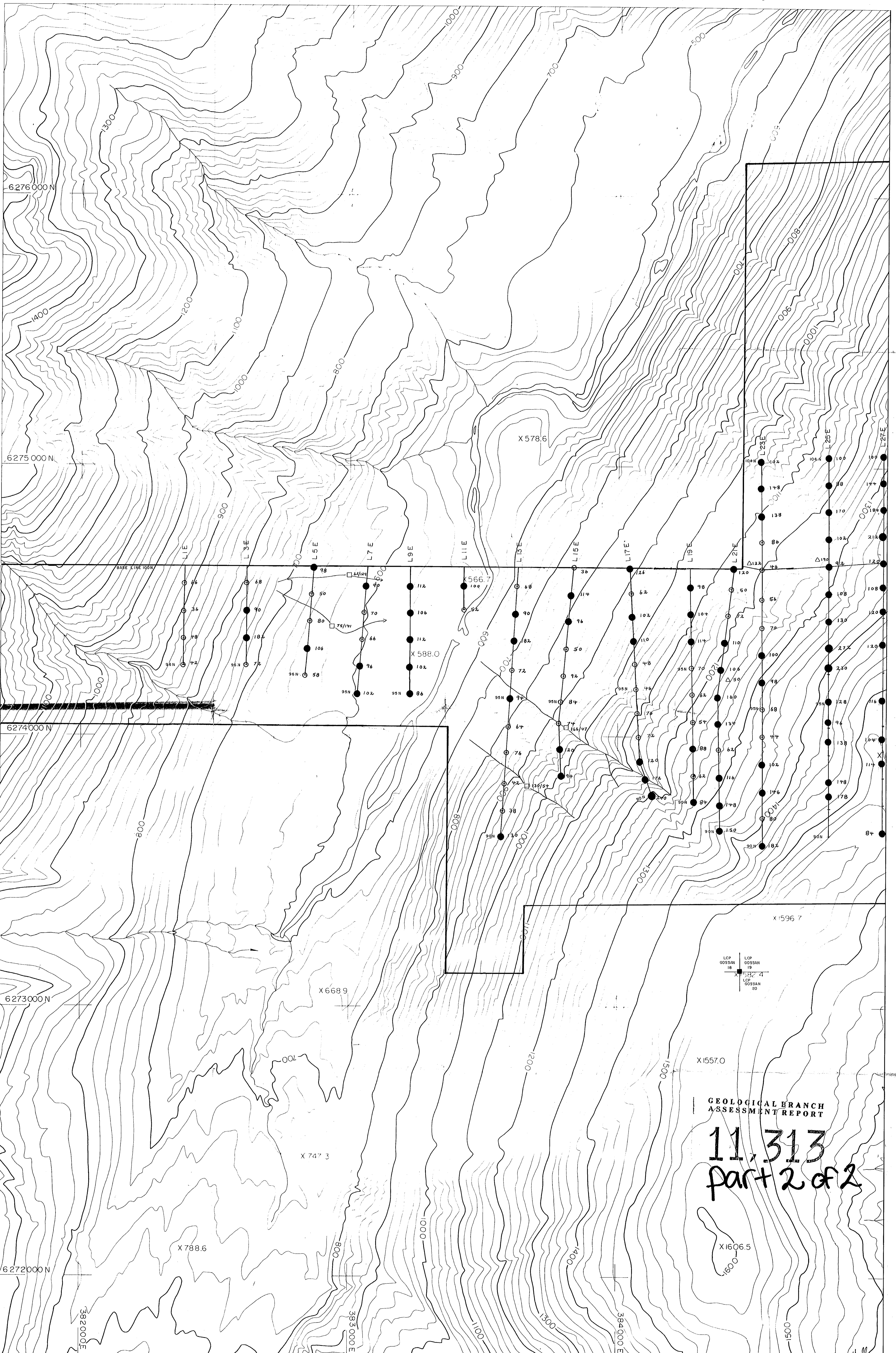


GEOLOGICAL BRANCH
ASSESSMENT REPORT

11,313
part 2 of 2

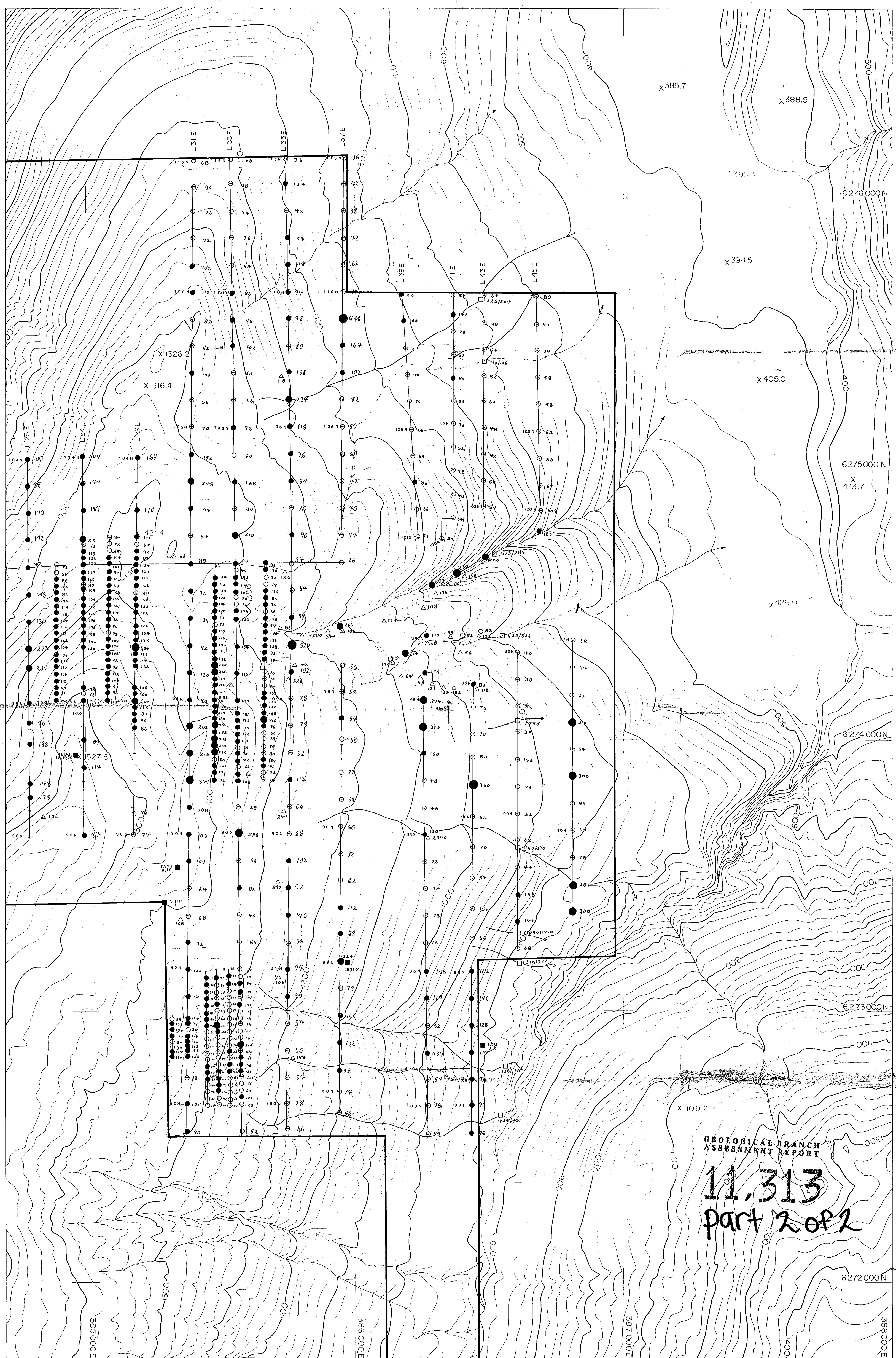
LEGEND: SLIGHTLY ANOMALOUS 48 ANOMALOUS 94 HIGHLY ANOMALOUS 160 SOIL SAMPLES ROCK CHIP SAMPLES HIC SAMPLES -20+80 / -90 mesh	SHEET INDEX 	 0 100 200 300 400 500 METRES PRELIMINARY RECONNAISSANCE TYPE MAPPING <small>Scale and elevation datum based on limited ground control resulting in good relative but somewhat poor accuracy.</small>	 McEwanney Surveying & Engineering Ltd 1186 Alberni Street Vancouver B.C., Canada Compiled from aerial photography taken in July, 1982 at an aspect of 1:50,000 scale of 1:60,000	ONAPING RESOURCES LTD. SKUT PROJECT, GOSSAN 18, 19, 20 & CENTRAL CLAIM, LIARD M.D. BRITISH COLUMBIA	
				Pb RESULTS IN PPM.	
SCALE 1:50,000 DATE COMPILED July 1983	CONTOUR INTERVAL 20 Metres SHEET NUMBER 2 OF 2	BY B.V. HALL DATE: SEPT, 1983	FIGURE: 13b		



GEOLOGICAL BRANCH
ASSESSMENT REPORT

11,313
part 2 of 2

<p>LEGEND:</p> <p>ABOVE BACKGROUND</p> <p>SLIGHTLY ANOMALOUS</p> <p>HIGHLY ANOMALOUS</p> <p>Zn ppm</p> <p>83</p> <p>200</p> <p>280</p> <p>390</p>	<p>○ SOIL SAMPLES</p> <p>□ ROCK CHIP SAMPLES</p> <p>△ HIC SAMPLES</p> <p>-20 x 80 / -80 mesh</p>	<p>SHEET INDEX</p> <p>2</p>	<p>0 100 200 300 400 500</p> <p>METRES</p>	<p>McElwanney Surveying & Engineering Ltd</p> <p>1146 Alberni Street, Vancouver, B.C., Canada</p> <p>Completed from aerial photography taken in July 1982 at an approximate scale of 1:60,000</p> <p>SCALE 1:5,000</p> <p>DATE COMPLETED July 1983</p>	<p>ONAPING RESOURCES LTD.</p> <p>ISKUT PROJECT, GOSSAN 18, 19, 20 & CENTRAL CLAIM, LIARD M.D. BRITISH COLUMBIA</p> <p>Zn RESULTS IN P.P.M.</p> <p>BY B.V. HALL</p> <p>DATE: SEPT. 1983</p>



GEOLOGICAL BRANCH
ASSESSMENT REPORT

11,313
part 2 of 2

LEGEND: ABOVE SLIGHTLY ANOMALOUS HIGHLY
BACKGROUND ANOMALOUS ANOMALOUS
Zn ppm 83 200 280 390

○ SOIL SAMPLES
□ ROCK CHIP SAMPLES
■ HNC SAMPLES
-20 x 70 - 80 mesh

SHEET INDEX



0 100 200 300 400 500
METRES
PRELIMINARY RECONNAISSANCE TYPE MAPPING
Scale and elevation datum based on limited ground control resulting in good relative but absolute accuracy.

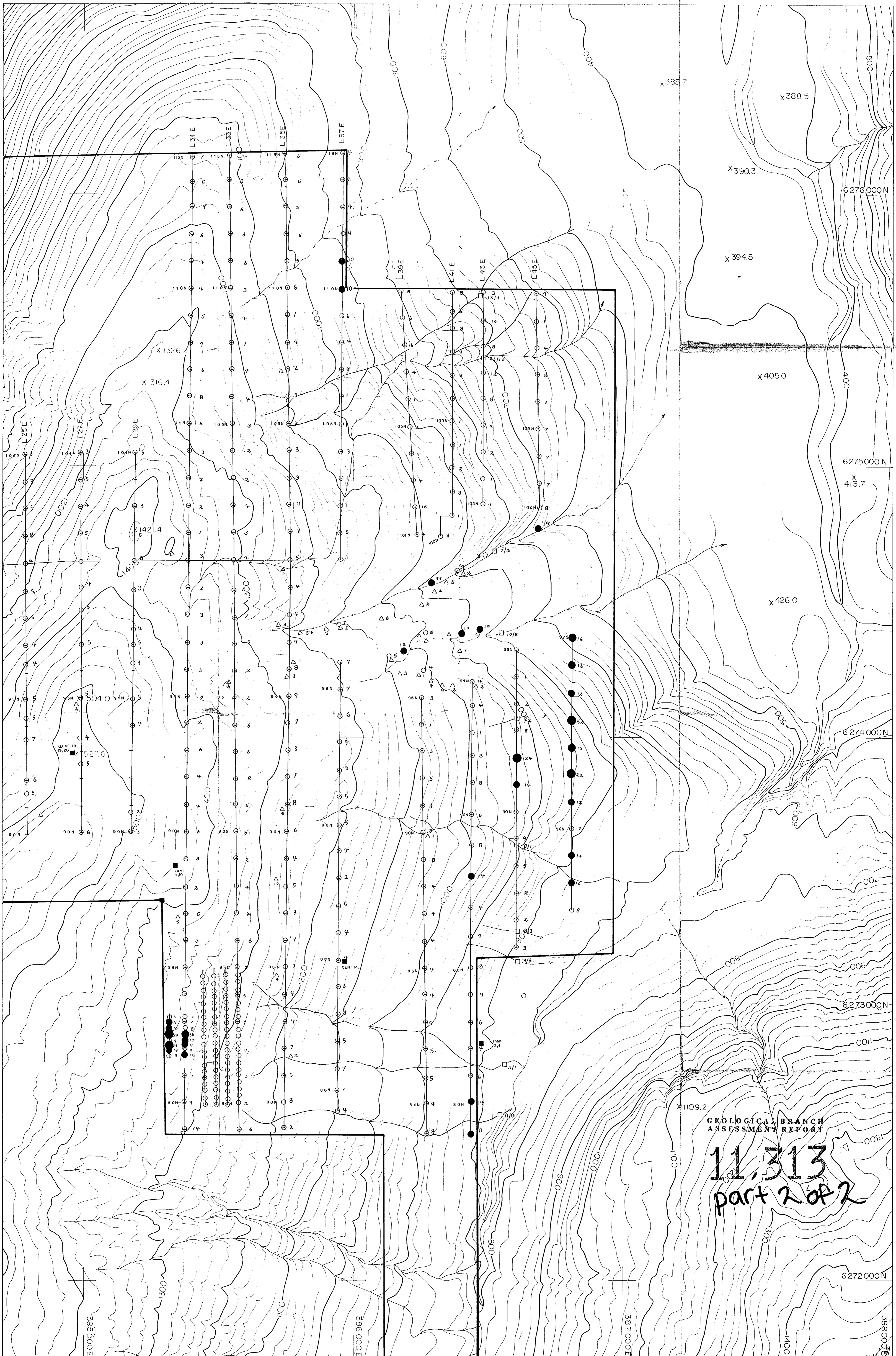


McElvanney Surveying & Engineering Ltd
1186 Alberni Street Vancouver B.C., Canada
Compiled from aerial photography taken in July 1982
at an approximate scale of 1:60000

ONAPING RESOURCES LTD.
ISKUT PROJECT; GOSAN 18,19,20 B CENTRAL CLAIM, LIARD M.D.
BRITISH COLUMBIA
Zn RESULTS IN PPM.

SCALE 1:5000
DATE COMPLETED July 1983
CONTOUR INTERVAL 20 Metres
SHEET NUMBER 2 OF 2

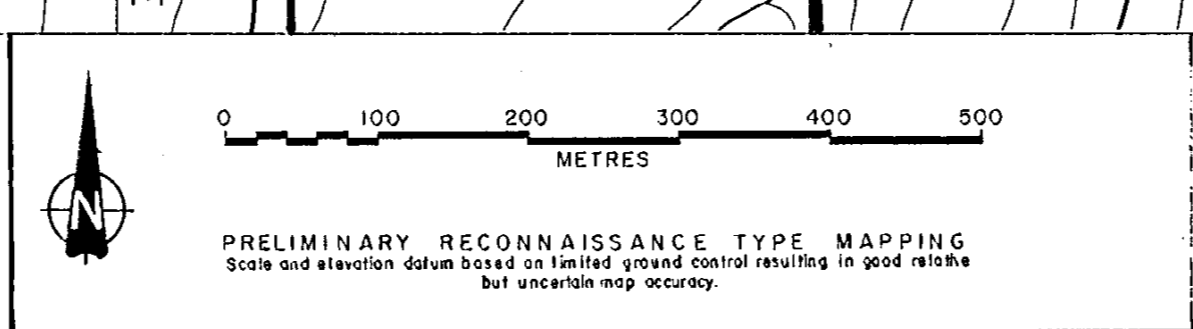
BY: B.V. HALL
DATE: SEPT., 1983
FIGURE 14b



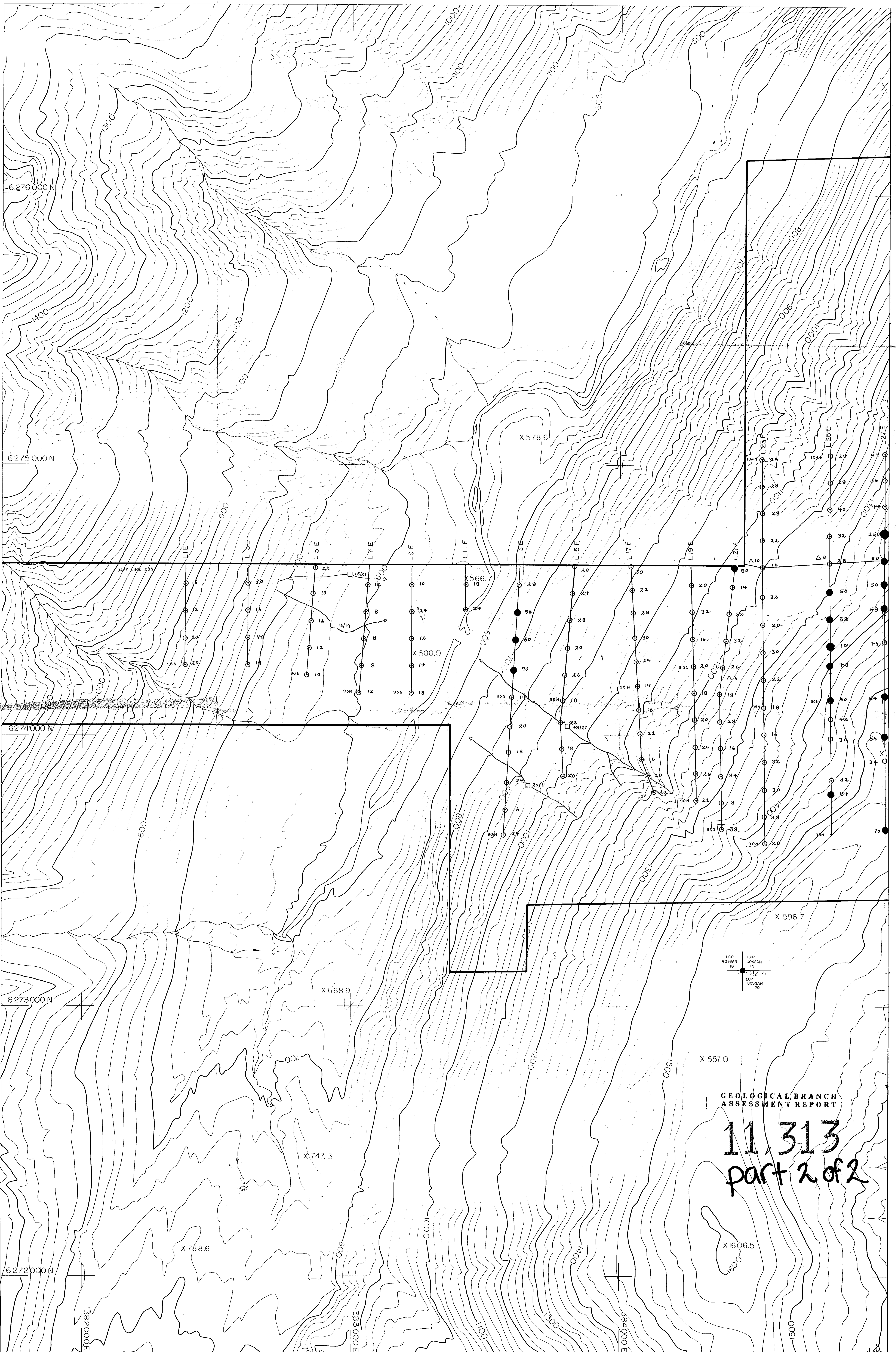
GEOLOGICAL BRANCH
ASSESSMENT REPORT

11,313
part 2 of 2

LEGEND:	SLIGHTLY ANOMALOUS	HIGHLY ANOMALOUS	○ SOIL SAMPLES	△ ROCK CHIP SAMPLES	□ HVC SAMPLES	SHEET INDEX
No ppm	9.5	15	19	-20+80 / -80 mesh		
	●	●	●			



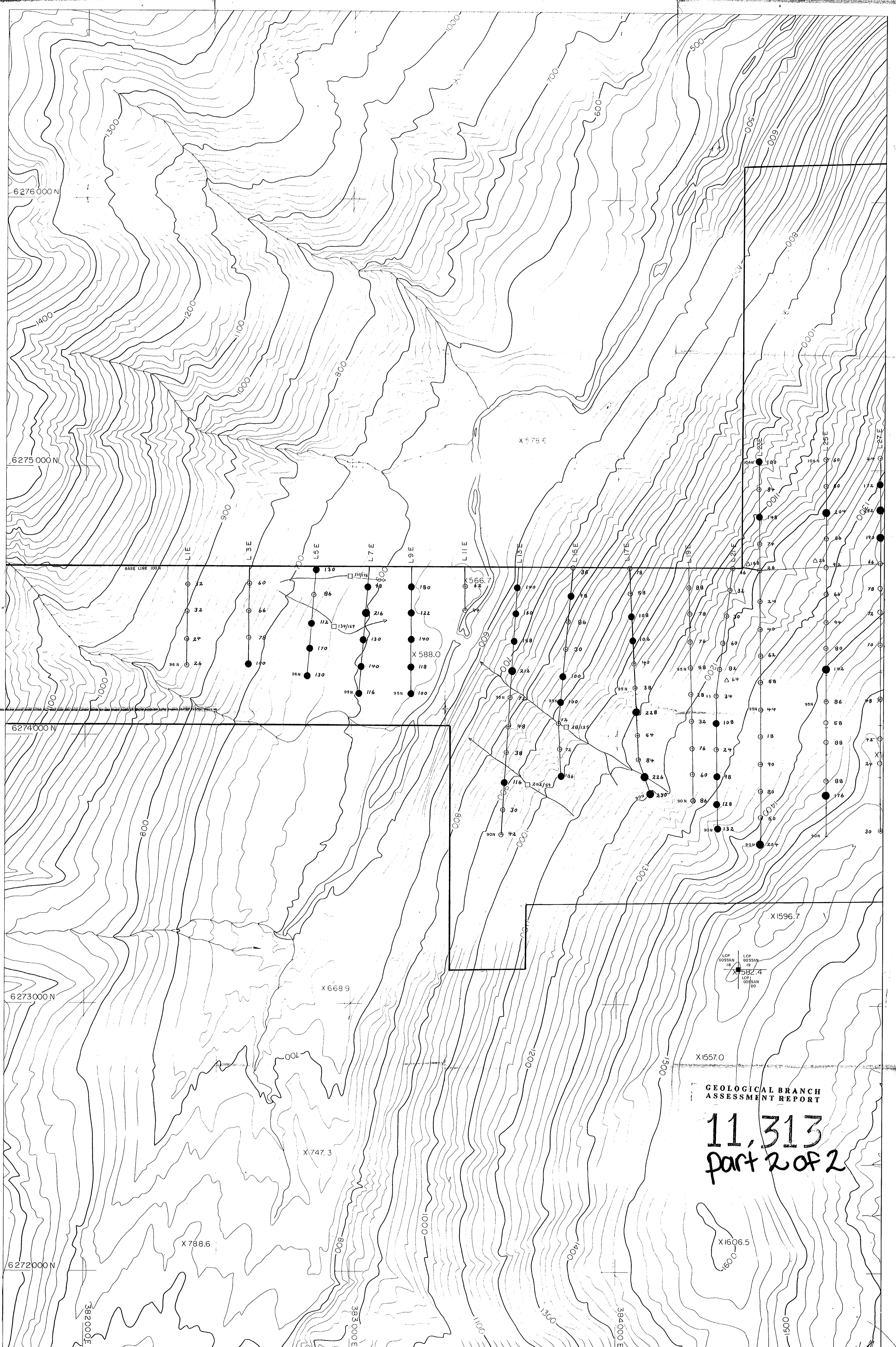
McElhenny Surveying & Engineering Ltd 1166 Alberni Street Vancouver B.C., Canada	ONAPING RESOURCES LTD. ISKUT PROJECT, GOSSAN 19, 19, 20 B. CENTRAL CLAIM, LIARD M.D. BRITISH COLUMBIA
Completed from aerial photography taken in July 1982 at an approximate scale of 1:60000	
SCALE: 1:15,000	CONTOUR INTERVAL: 20 Metres
DATE COMPLETED: July 1983	SHEET NUMBER: 2 OF 2
BY: B.V. HALL	DATE: SEPT. 1983
REF No 40061-0	FIGURE: 12b



GEOLOGICAL BRANCH
ASSESSMENT REPORT

11,313
part 2 of 2

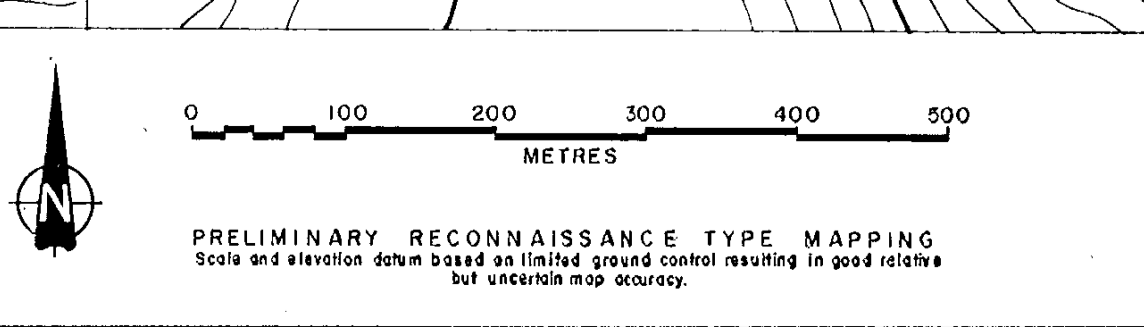
LEGEND: SLIGHTLY ANOMALOUS ANOMALOUS HIGHLY ANOMALOUS SOIL SAMPLES ROCK CHIP SAMPLES 23C SAMPLES -20+80, -80 mesh SHEET INDEX	 METRES PRELIMINARY RECONNAISSANCE TYPE MAPPING <small>Scale and elevation datum based on limited ground control resulting in good relative but uncertain map accuracy.</small>	 McElvanney Surveying & Engineering Ltd. 1156 Alberni Street, Vancouver, B.C., Canada Completed from aerial photographs taken in July 1982 at an approximate scale of 1:60000 SCALE 1:5000 HORIZONTAL INTERVAL 20 Metres DATE SAMPLED July 1983 SHEET NUMBER 1 OF 2	ONAPING RESOURCES LTD. SKUT PROJECT, GOSSAN & CENTRAL CLAIM, LIARD M.D. BRITISH COLUMBIA Pb RESULTS IN PPM.
			BY: V. HALL DATE: SEPT, 1983 FIGURE 13a



GEOLOGICAL BRANCH
ASSESSMENT REPORT

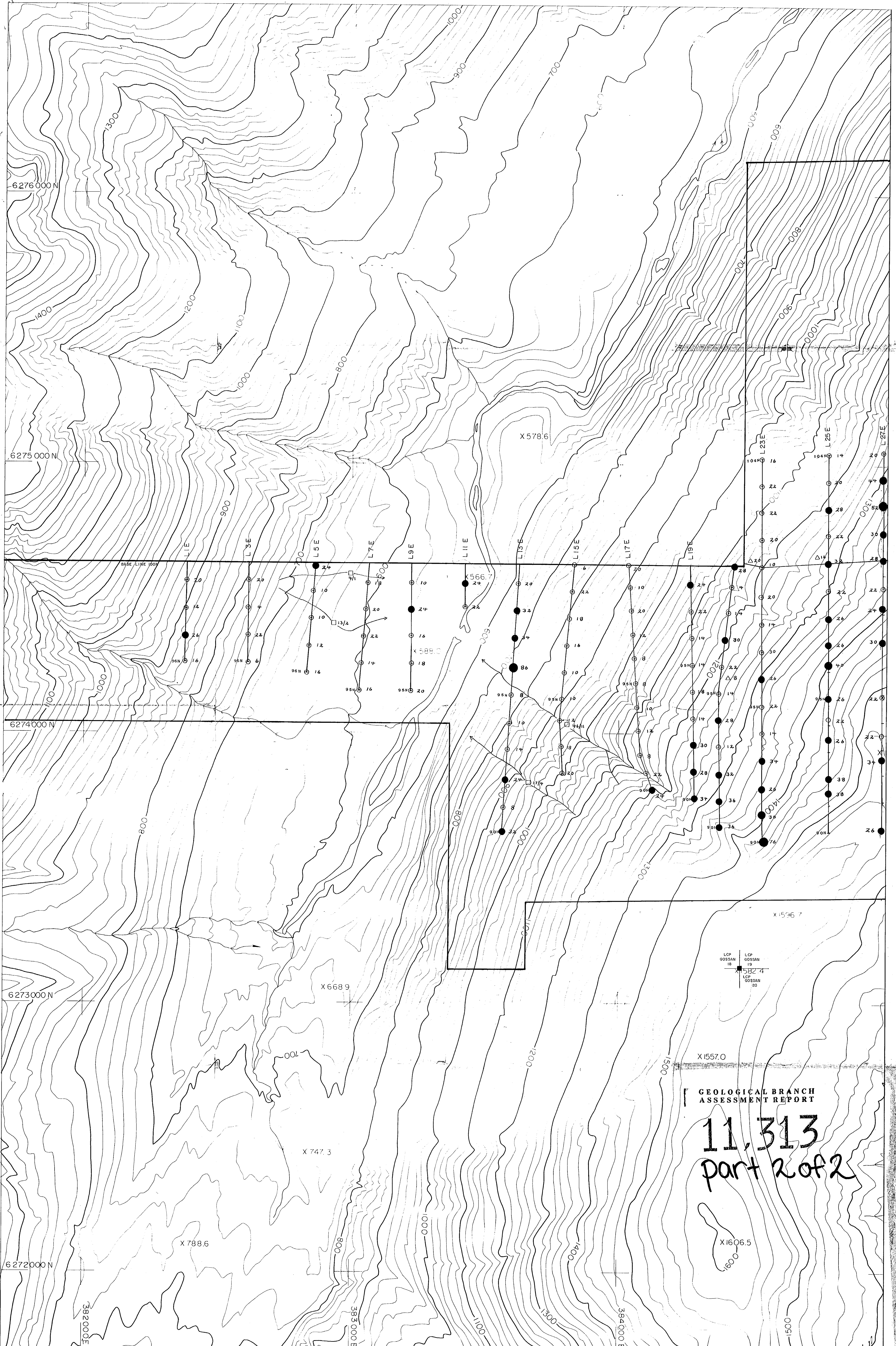
11,313
part 2 of 2

LEGEND:	SLIGHTLY ANOMALOUS	ANOMALOUS	HIGHLY ANOMALOUS	○ SOIL SAMPLES □ ROCK CHIP SAMPLES □ IHC SAMPLES -20 +80 / -80 mesh	SHEET INDEX 2
	Cu ppm 95	190	350		



McElhinney Surveying & Engineering Ltd.
1166 Alberni Street, Vancouver B.C., Canada
Compiled from aerial photography taken in 1982
at an elevation of 1:60000
SCALE 1:5,000
DATE COMPLETED July 1983
SHEET NUMBER 1 OF 2

ONAPING RESOURCES LTD.
ISKUT PROJECT: GOSSAN 18, 19, 20 B CENTRAL CLAIM, LIARD M.D.
BRITISH COLUMBIA
Cu RESULTS IN P.P.M.
BY: B.V. HALL
DATE: SEPT., 1983
FIGURE: 11a



LEGEND: SLIGHTLY ANOMALOUS 23 ANOMALOUS 40 HIGHLY ANOMALOUS 47

○ SOIL SAMPLES
 □ ROCK CHIP SAMPLES
 △ RHC SAMPLES
 -20+80 / -80 mesh

SHEET INDEX
 2

0 100 200 300 400 500 METRES

PRELIMINARY RECONNAISSANCE TYPE MAPPING
 Scale and elevation shown based on limited ground control existing in good detail but without map accuracy.

McIntyre
 McINTYRE
 1160 Alberni Street, Vancouver, B.C., Canada
 Completion date: photography taken in July, 1982
 at an approximate scale of 1:6000

SCALE: 1:5,000
 CONTOUR INTERVAL: 20 METRES

DATE COMPILED: July 1983
 SHEET NUMBER: 1 OF 2

ONAPING RESOURCES LTD.
 ISKUT PROJECT, GOSSAN 19, 19, 20 & CENTRAL CLAIM, LIARD M.D., BRITISH COLUMBIA

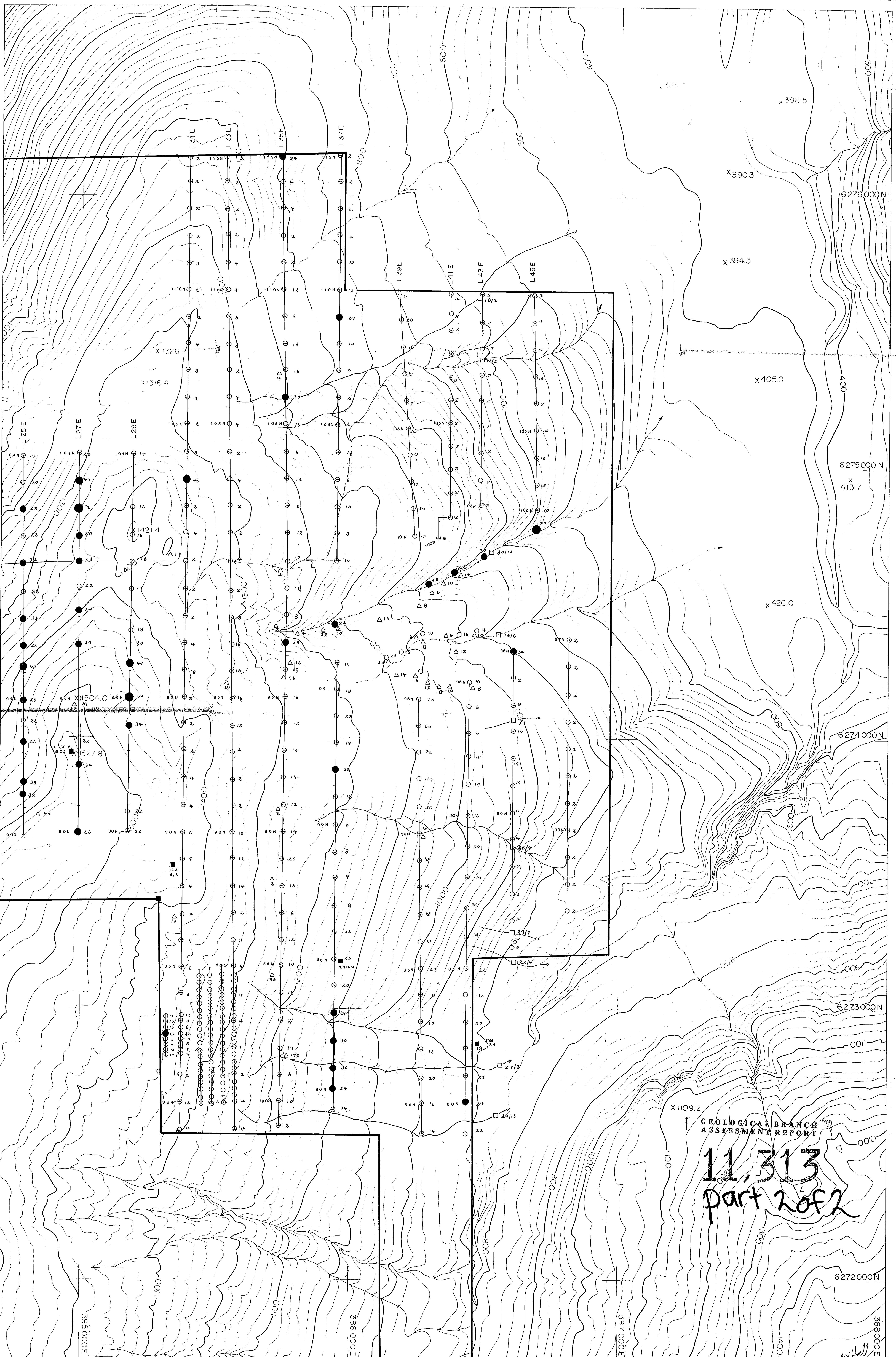
As RESULTS IN PPM.

BY B.V. HALL
 DATE: SEPT. 1983

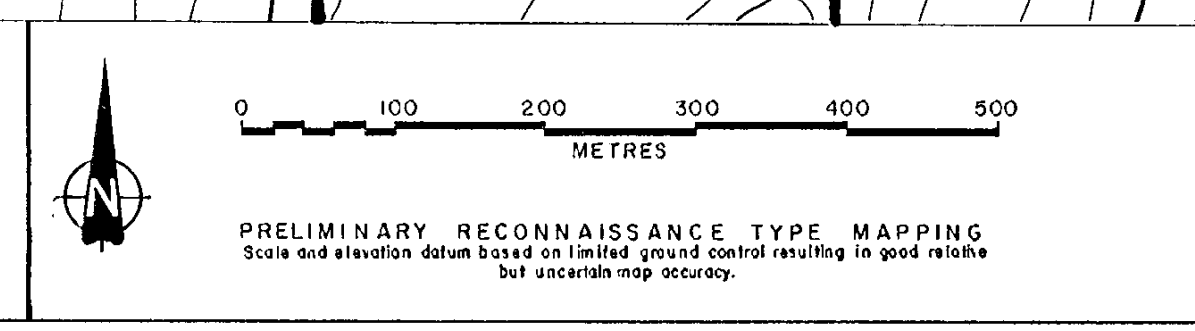
FIGURE: 15 a

GEOLOGICAL BRANCH
 ASSESSMENT REPORT

11,313
 part 2 of 2



LEGEND	SLIGHTLY ANOMALOUS	HIGHLY ANOMALOUS		SHEET INDEX
As ppm	23	40	47	



McElhenny Surveying & Engineering Ltd
 1166 Alberni Street Vancouver, B.C., Canada
 Compiled from aerial photography taken in July 1982
 at an approximate scale of 1:8000

SCALE 1:5,000
 DATE COMPLETED July 1983

ONAPING RESOURCES LTD.
 ISKUT PROJECT, GOSSAN 18, 19, 20 & CENTRAL CLAIM, LIARO M.D.,
 BRITISH COLUMBIA

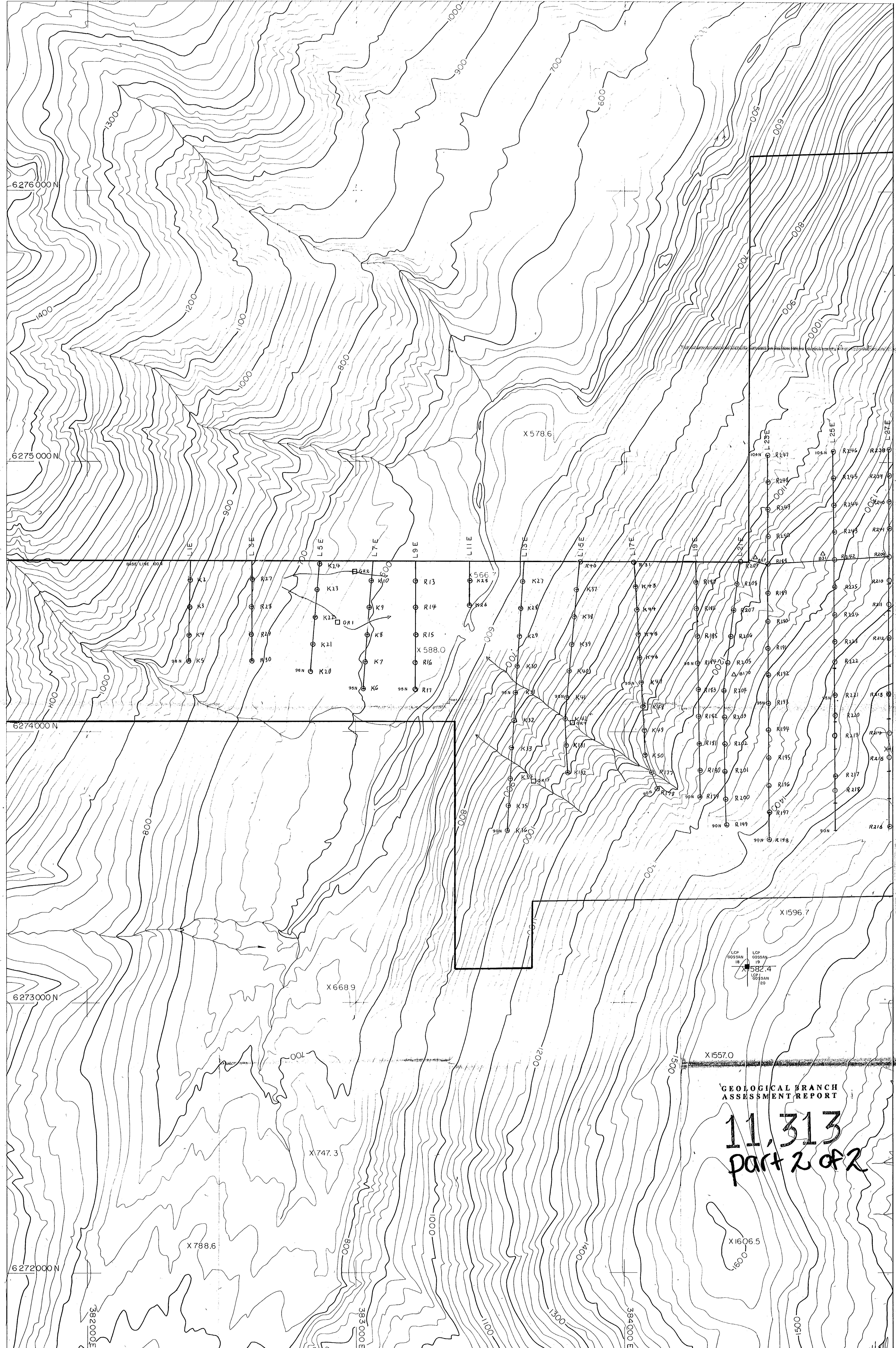
As RESULTS IN P.P.M.

BY B.V. HALL
 DATE: SEPT. 1983

FIGURE 15b

GEOLOGICAL BRANCH
 ASSESSMENT REPORT

11,313
 part 2 of 2



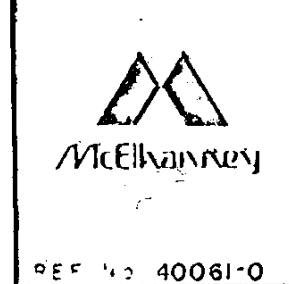
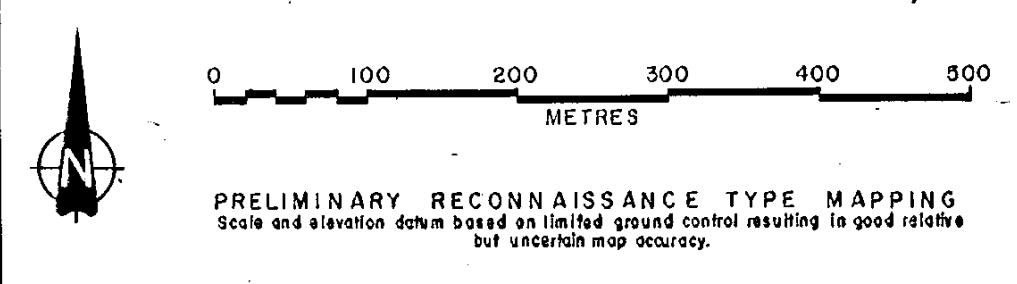
LCP
GOSSAN
18
LCP
GOSSAN
19
X 582.4
LCP
GOSSAN
20

**GEOLOGICAL BRANCH
ASSESSMENT REPORT**

11,313
part 2 of 2

- LEGEND:
- SOIL SAMPLES
 - △ ROCK CHIP SAMPLES
 - HMC SAMPLES

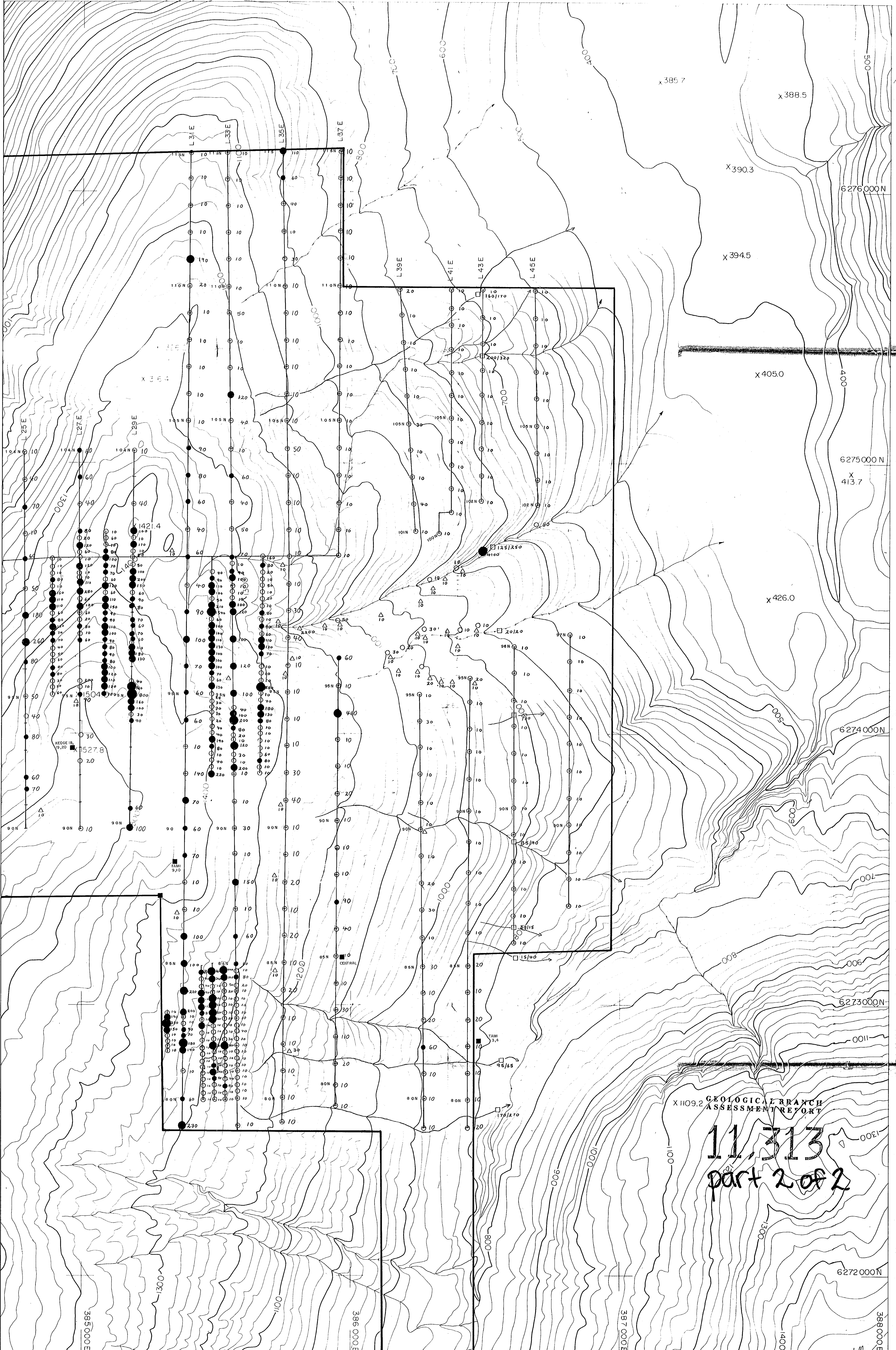
SHEET INDEX
2



McElvanney Surveying & Engineering Ltd.
1166 Alberni Street, Vancouver, B.C., Canada
Compiled from aerial photographs taken in July 1982
at an approximate scale of 1:60000
SCALE 1:5000 CONTOUR INTERVAL 20 METRES
DATE COMPILED July 1983 SHEET NUMBER 1 OF 2

ONAPING RESOURCES LTD.
ISKUT PROJECT, GOSSAN 18, 19, 20 & CENTRAL CLAIM, LIARD M.D.
BRITISH COLUMBIA
SAMPLE LOCATION MAP
BY B.V.HALL DATE: SEPT, 1983 FIGURE 8a

REF. NO. 40081-0



LEGEND: ABOVE SLIGHTLY HIGHLY
BACKGROUND ANOMALOUS ANOMALOUS
Au ppb 65 95 350

○ SOIL SAMPLES
△ ROCK CHIP SAMPLES
□ HRC SAMPLES
-20x70 / -80 mesh

SHEET INDEX

0 100 200 300 400 500
METRES

PRELIMINARY RECONNAISSANCE TYPE MAPPING
Scale and elevation datum based on limited ground control resulting in good results
but accuracy may vary.

McElvaney Surveying & Engineering Ltd
1166 Alberni Street Vancouver B.C. Canada
Compiled from aerial photography taken in July 1982
at an oblique angle at scale of 1:8000

Scale 1:5,000
Contour Interval 20 Metres

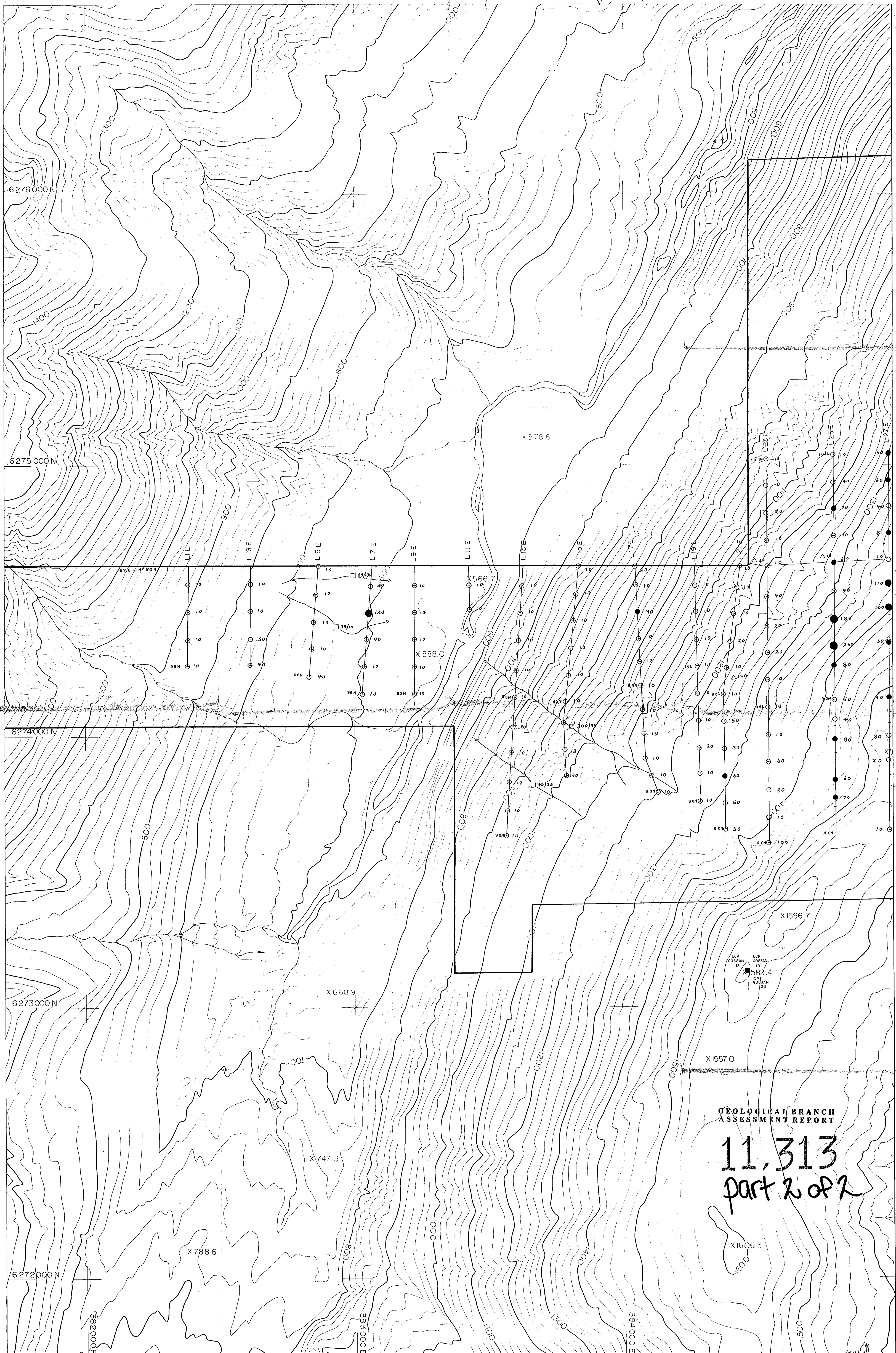
Date Compiled July 1983
Sheet Number 2 OF 2

ONAPING RESOURCES LTD.
ISKUT PROJECT, GOSSAN 18, 19, 20 & CENTRAL CLAIM, LIARD M.D.
BRITISH COLUMBIA

Au RESULTS IN PPB.

BY: B.W. HALL
DATE: SEPT, 1983

FIGURE: 9b



GEOLOGICAL BRANCH
ASSESSMENT REPORT

11,313
part 2 of 2

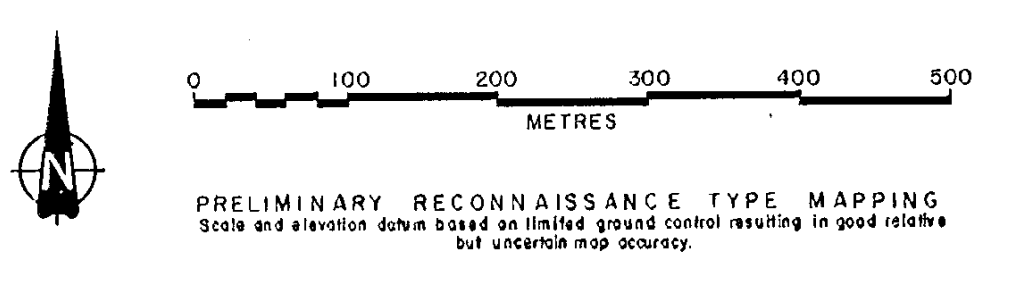
LEGEND:

ABOVE BACKGROUND	SLIGHTLY ANOMALOUS	HIGHLY ANOMALOUS
Au ppb 65	95	350

○ SOIL SAMPLES
 △ ROCK CHIP SAMPLES
 □ RMC SAMPLES
 -20 x 20 / -80 mesh

SHEET INDEX

2



McEwen Surveying & Engineering Ltd.
1100 Alberni Street, Vancouver, B.C., Canada

Completed from aerial photography taken in July 1982 at an approximate scale of 1:6000

SCALE 1:5,000 CONTOUR INTERVAL 20 Metres

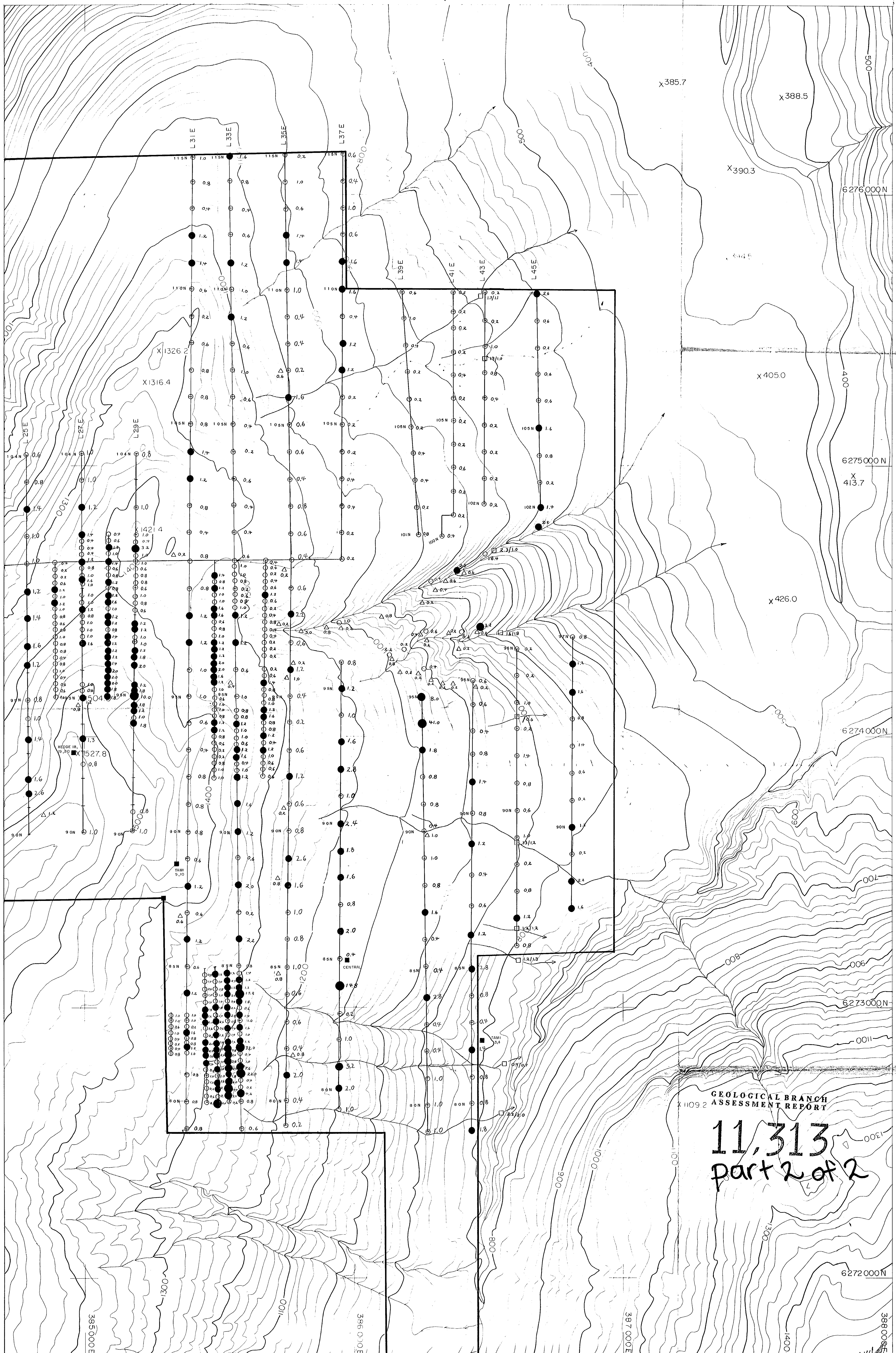
DATE: July 1983 SHEET NUMBER: 1 OF 2

ONAPING RESOURCES LTD.
ISKUT PROJECT, GOSSAN 18, 19, 20 B.C. CENTRAL CLAIM, LIARD M.D. BRITISH COLUMBIA

Au RESULTS IN PPB.

BY: B.V. HALL DATE: SEPT. 1983

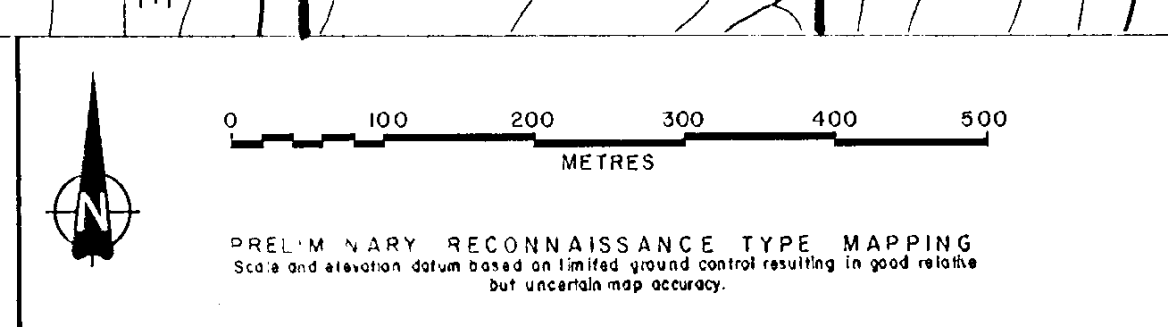
FIGURE: 9d



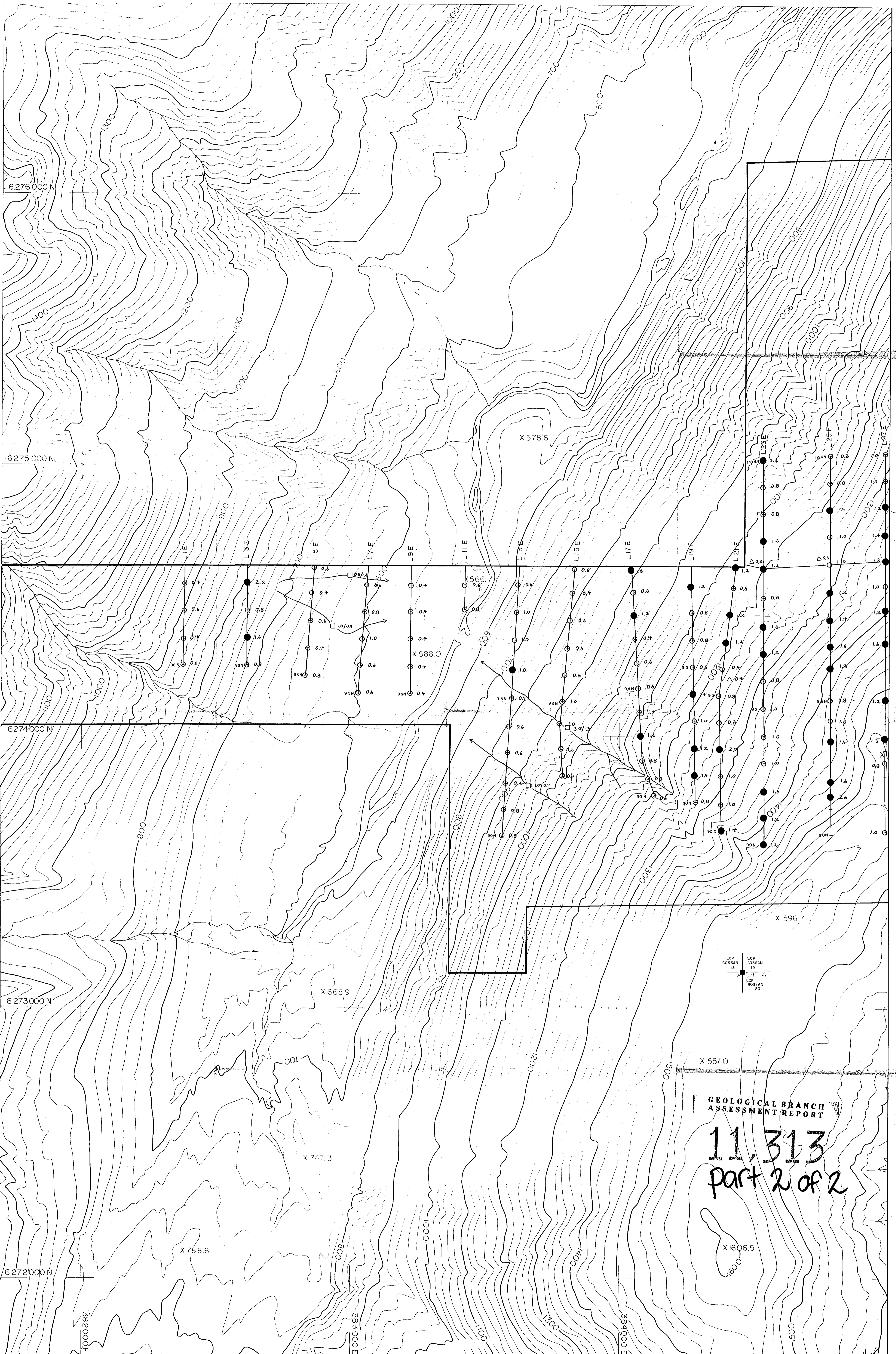
GEOLOGICAL BRANCH
ASSESSMENT REPORT

11,313
part 2 of 2

LEGEND:	SLIGHTLY ANOMALOUS	ANOMALOUS	HIGHLY ANOMALOUS	○ SOIL SAMPLES	SHEET INDEX
	Ag ppm	1.2	3.0	10.0	
	●	●	●	□ HMC SAMPLES	
				■ -20x80 >80 mesh	



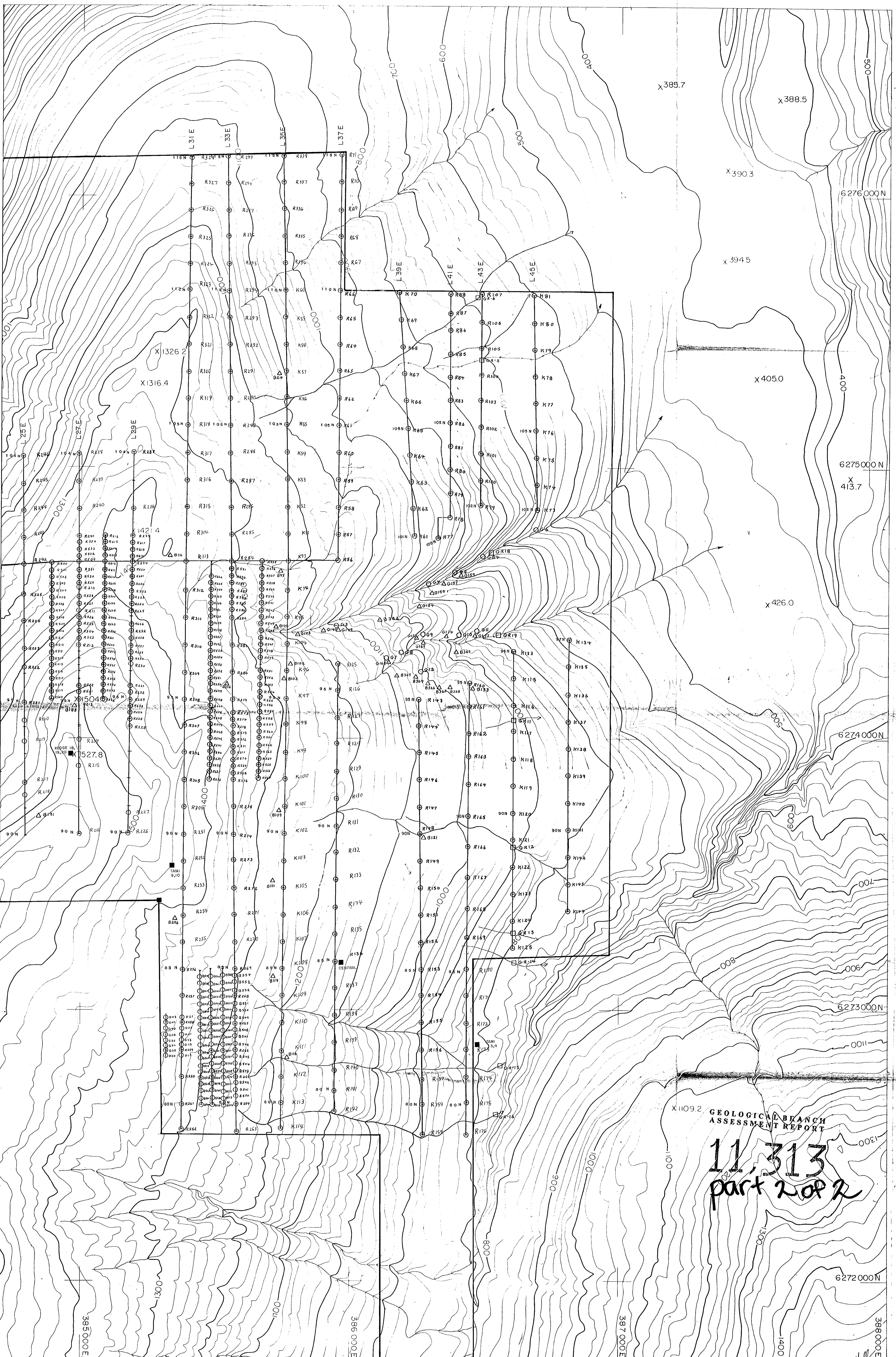
 McElvanney PRELIMINARY RECONNAISSANCE TYPE MAPPING Scale and elevation datum based on limited ground control resulting in good relative but uncertain map accuracy.	McElvanney Surveying & Engineering Ltd 1156 Alberni Street Vancouver, B.C., Canada Completed from aerial photography taken in July 1982 on an orthorectified scale of 1:60000	ONAPING RESOURCES LTD. ISKUT PROJECT, GOSSAN 19, 20 & CENTRAL CLAIM, LIARD M.D. BRITISH COLUMBIA
	DATE COMPLETED July 1983 SCALE 1:5,000 SHEET NUMBER 2 OF 2	CONTOUR INTERVAL 20 Metres BY: B.V. HALL DATE: SEPT. 1983



GEOLOGICAL BRANCH
ASSESSMENT REPORT

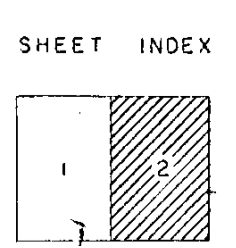
11,313
part 2 of 2

LEGEND: SLIGHTLY ANOMALOUS 1.2 ANOMALOUS 3.0 HIGHLY ANOMALOUS 10.0 ○ SOIL SAMPLES △ ROCK CHIP SAMPLES □ HMC SAMPLES -20+80, -80 mesh	SHEET INDEX 2	 0 100 200 300 400 500 METRES PRELIMINARY RECONNAISSANCE TYPE MAPPING Scale and elevation data based on limited ground control resulting in good relative but uncertain map accuracy.	 McElvaney Surveying & Engineering Ltd. 1168 Alaxan Street, Vancouver, B.C., Canada Completed from aerial photography, taken in July 1982 at an altitude of 6000 ft.	ONAPING RESOURCES LTD. LISKUT PROJECT, GOSSAN 18, 19, 20 & CENTRAL CLAIM, LIARD M.D. BRITISH COLUMBIA	
				Ag RESULTS IN PPM.	
DATE Coupled July 1983	SHEET NUMBER 1 OF 2	BY R.V. HALL DATE: SEPT., 1983	FIGURE: 10a		



GEOLOGICAL BRANCH
ASSESSMENT REPORT
11,313
part 2 of 2

- LEGEND:
- SOIL SAMPLES
 - △ ROCK CHIP SAMPLES
 - HMC SAMPLES



PRELIMINARY RECONNAISSANCE TYPE MAPPING
Scale and elevation datum based on unlevel ground control resulting in good relative but uncertain map accuracy.



McElvanney Surveying & Engineering Ltd.
1185 Alberni Street, Vancouver B.C., Canada
Completed from aerial photography taken in July 1982
at an approximate scale of 1:80000
SCALE 1:5,000 CONTOUR INTERVAL 20 Metres
DATE COMPILED July 1983 SHEET NUMBER 2 OF 2

ONAPING RESOURCES LTD.
ISKUT PROJECT, GOSSAN 18, 19, 20 & CENTRAL CLAIM, LIARD M.D.
BRITISH COLUMBIA
SAMPLE LOCATION MAP
BY BV/HALL DATE: SEPT, 1983 FIGURE: 8d