

83-#342-#11315

7



SAWYER CONSULTANTS INC.

GEOCHEMICAL ASSESSMENT REPORT

on the

RAFT 1 and RAFT 2 CLAIMS

Nitinat River Area

Victoria Mining Division, B.C.

NTS 92 F/2

Latitude  $49^{\circ}03'N$

Longitude  $124^{\circ}35'W$

of

JAN RESOURCES LTD.

(Owner and Operator)

by

Gordon D. House, M.S., F.G.A.C.

of

SAWYER CONSULTANTS INC.

August 18th, 1983

**GEOLOGICAL BRANCH  
ASSESSMENT REPORT**

**11,315**

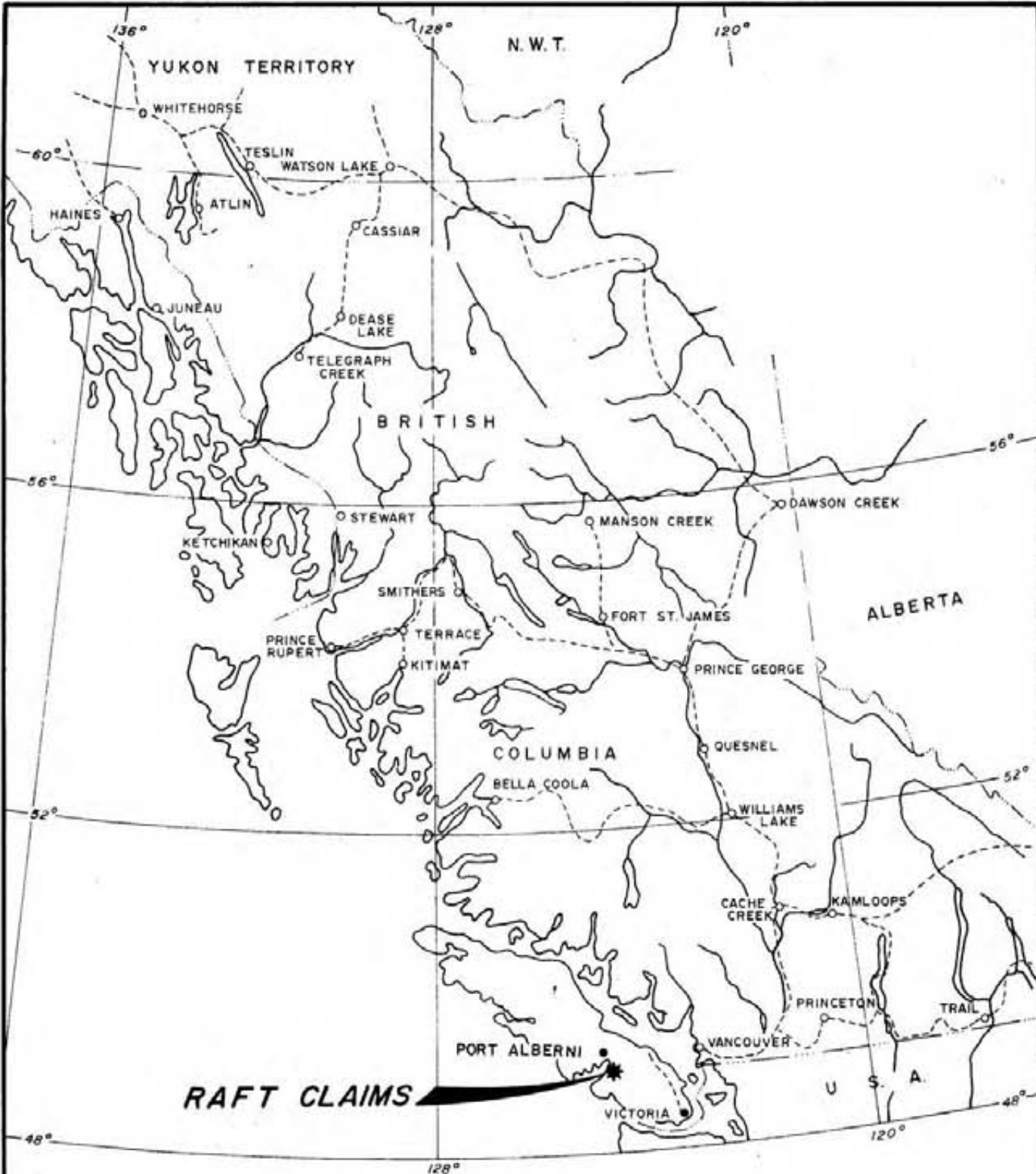
## TABLE OF CONTENTS

	Page
INTRODUCTION	2 ✓
PROPERTY AND OWNERSHIP	2 ✓
LOCATION AND ACCESS	2 ✓
PHYSIOGRAPHY	4 ✓
HISTORY AND PREVIOUS WORK	4 ✓
REGIONAL GEOLOGY	5 ✓
GEOCHEMICAL SURVEY - 1983	6 ✓
DISCUSSION OF RESULTS	7 ✓
CONCLUSIONS AND RECOMMENDATIONS	9 ✓
CERTIFICATES	
Hugo Laanela	11 ✓
Gordon D. House, M.S., F.G.A.C.	12 ✓
APPENDIX A - Copy of Geochemical Analyses Report	
APPENDIX B - Statement of Expenditure and List of Personnel for Assessment Purposes	

### List of Illustrations

Figure 1	General Location Sketch; Scale 1 inch = 125 miles	1 ✓
Figure 2	Claim Sketch; Scale 1:50,000	3 ✓
Map 1	Composite Geochemical Map - Stream Sediment Samples Cu, Pb, Zn; Scale 1:10,000	in pocket.
Map 2	Composite Geochemical Map - Soil Samples Cu, Pb, Zn; Scale 1:10,000	in pocket
Map 3	Composite Geochemical Map - Stream Sediment Samples Au, Ag; Scale 1:10,000	in pocket
Map 4	Composite Geochemical Map - Soil Samples Au, Ag; Scale 1:10,000	in pocket.

**SAWYER CONSULTANTS INC.**



JAN RESOURCES LTD.  
 RAFT 1 AND 2 CLAIMS  
 VICTORIA MINING DIVISION, B.C.  
 GENERAL LOCATION SKETCH

SCALE 1" = 125 MILES

FIGURE 1

## INTRODUCTION

The Raft 1 and Raft 2 claims were staked in July 1982 to cover apparently anomalous geochemical values in streams, detected by Gunnex Ltd. in the 1960's during regional exploration programs. The Raft 1 and Raft 2 claims were acquired by Jan Resources Ltd. in 1983 to consolidate their land holdings in the Mount McQuillan - Nitinat River area of Vancouver Island.

During the period from 19th July to 24th July, 1983, a two-man field crew under the supervision of Mr. Hugo Laanela, Geologist, carried out a program of geochemical silt and soil sampling on the Raft 1 and Raft 2 claims. This report summarizes the work carried out and the results obtained. Costs of this work were paid for by Jan Resources Ltd. of 1020 - 475 Howe Street, Vancouver, B.C., V6C 2A3.

## PROPERTY

The property consists of two claims, the Raft 1 and Raft 2, of 20 units each, and Record numbers 642 and 643 respectively, located in the Victoria Mining Division.

The claims were staked by Brent Schorn in July 1982 and were acquired by Jan Resources Ltd. in 1983. The registered owner of the claims is Jan Resources Ltd.

## LOCATION AND ACCESS

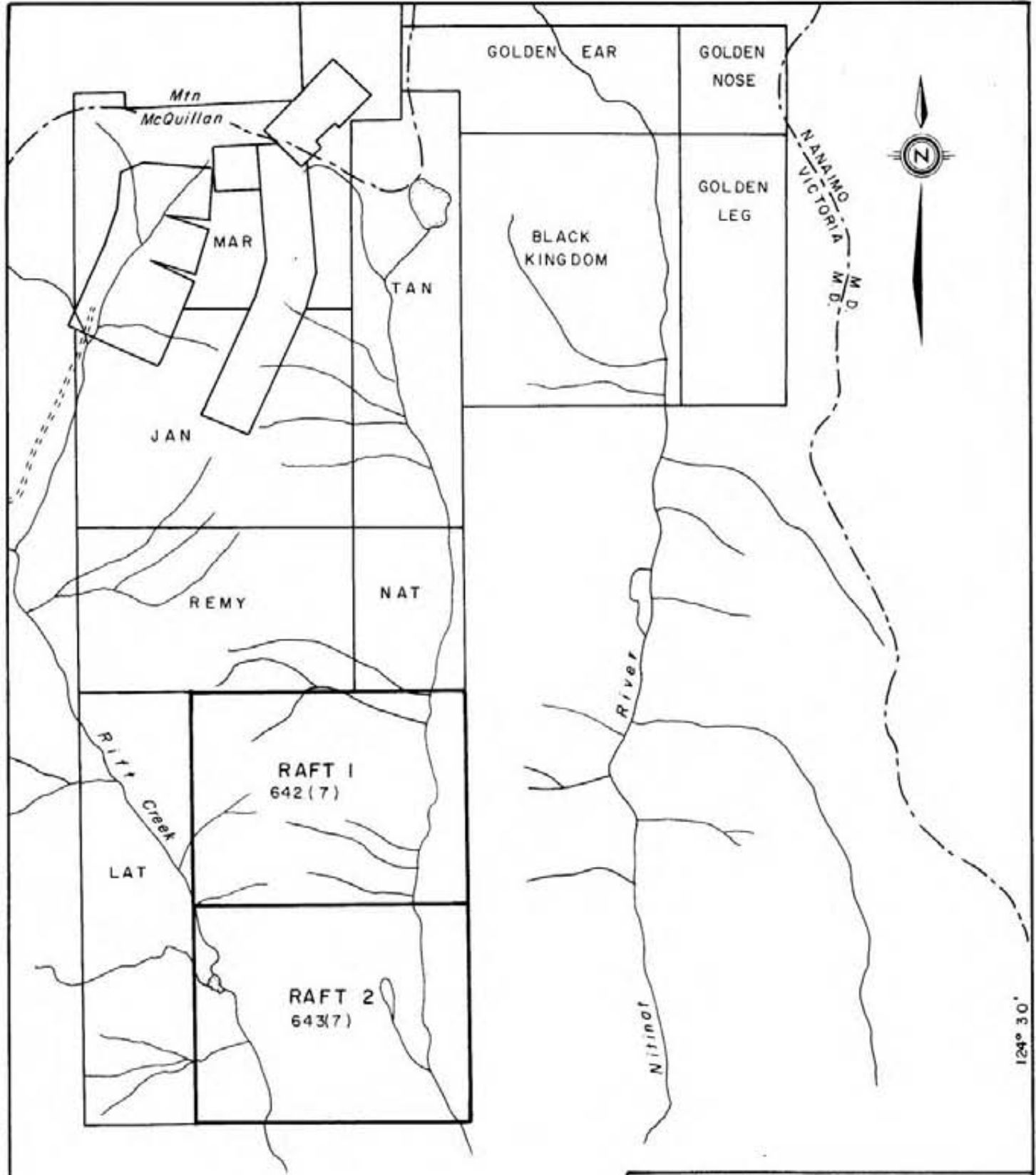
The Raft 1 and Raft 2 claims are located about 25 kilometres southeast of Port Alberni on the West Coast of Vancouver Island, and cover the steep ridge running south from the peak of Mount McQuillan, between the Middle Fork of Nitinat River and Rift Creek.

The claims are accessible by logging roads constructed by the MacMillan Bloedel Company on whose timber rights the claims lie. The area has been logged over and the logging roads on the claims have been abandoned and have deteriorated.

The west side of the Raft 1 and Raft 2 claims is accessible by the Museum Creek Road which passes up the west side of Rift Creek after following the north bank of Museum Creek from its confluence with Franklin River. The east side of the claims and the ridge is accessible by the Nitinat River road from Cowichan Lake which follows the Middle Fork of the Nitinat River to a point a short distance up river from the northern boundary of the Raft 1 claim.

The ridge on the claims is covered with abandoned criss-crossing logging roads which are usable on foot only.

**SAWYER CONSULTANTS INC.**



JAN RESOURCES LTD.

**RAFT 1 AND 2 CLAIMS**

VICTORIA MINING DIVISION, B.C.

**CLAIM SKETCH**

SCALE 1:50,000

NTS. 92 F/2E

SAWYER CONSULTANTS INC. Date: August 1983.

Drawn by: J. S.

Figure: 2

49° 00'

124° 30'

## PHYSIOGRAPHY

The Raft 1 and Raft 2 claims lie within the western coastal forest region characterized by fairly abundant rainfall and heavy growth of larger timber. Elevations on the claims ranges from about 200 metres on the Middle Fork of the Nitinat River to over 1000 metres on the north boundary of the claims on the ridge top. Topography is quite steep with local relief precipitous. Streams are confined in fairly narrow steep sided valleys with smaller tributaries occupying V-shaped gullies with abundant waterfalls.

Logging over the area covered by the Raft 1 and Raft 2 claims in the past decade has left criss-crossing logging trails on the steep sided ridge and logging slash and debris from road building have blocked and changed the courses of many of the smaller tributary creeks. Logging slash on the hillsides and erosion of the clear cut areas have made travel extremely difficult off the logging trails.

## HISTORY AND PREVIOUS WORK

The Raft claims lie within the original Esquimalt and Nanaimo Railway Land Grant, much of which has been relinquished. The boundaries of portions retained are not known but one such portion is believed to cover an area north of Mount McQuillan, northwest of the Raft claims.

Mineral prospecting has been carried out in the area of China Creek and Franklin Creek since placer gold was mined in the 1860's. Development of lode gold prospects followed and up to eight properties had gone into production by 1940. The artificially low gold price and low tonnage potential of the vein gold deposits hindered further development.

In the 1960's Gunnex Ltd. acquired prospecting rights on certain parts of the E&N Land Grants under terms of a joint venture or farm-out agreement with Canadian Pacific. Work done by Gunnex Ltd. up to 1965 included a helicopter-borne low level aeromagnetic survey, a regional geochemical soil and silt sampling program and geological mapping combined with prospect and mineral showing examinations. Reports and maps covering these activities were made available to Jan Resources Ltd. and formed the basis of selecting areas for examination and further work.

The Gunnex Ltd. geochemical survey covered most of the main creeks and drainages and included both stream sediment and soil samples collected along the main drainages and creeks. Results from the survey showed most of the creeks draining the ridge trending south from Mount McQuillan, covered partly by the Raft claims, contained anomalous Total Heavy Metal values. There was no follow-up on these anomalous geochemical values and no further work was carried out.

**SAWYER CONSULTANTS INC.**

The 1962 aeromagnetic survey was flown by helicopter on quarter mile line spacing and mean terrain clearance of 500 feet. Results were plotted at 20 gamma contour intervals. A prominent north-south magnetic high is roughly coincident with the peak and high points of the ridge of Mount McQuillan lying north of the Raft claims. Several old properties and prospects are associated with the edges of the magnetic high zone.

Jan Resources Ltd. has carried out exploration work on the Jan, Mar, and Remy claims, adjoining the Raft claims to the north, since 1979. The exploration has included prospecting and geochemical sampling programs over areas of former showings and prospects, with detailed sampling of veins over these old prospects. Results from the programs in 1980 were sufficiently encouraging that diamond drill testing of three vein systems was carried out in late 1980 - early 1981.

The Raft 1 and Raft 2 claims adjoin the Mar and Jan claims on the south, covering the southerly extension of Mount McQuillan ridge. There has been no systematic follow-up work reported on the Total Heavy Metal anomalies discovered in the creeks draining Mount McQuillan ridge.

#### REGIONAL GEOLOGY

The Mount McQuillan area of Vancouver Island is underlain predominantly by volcanic rocks which have been mapped and grouped as part of the Sicker Series by Muller (1968). A recent publication by Muller (1980) has refined the geological work and redefined some of the sub-divisions of the Sicker Group.

The Sicker Group rocks are of Palaeozoic age and as recently redefined the Group has been sub-divided into four units as follows:

Buttle Lake Formation: limestone, calcarenitic, crinoidal, commonly recrystallized; interbedded with subordinate or equal thicknesses of calcareous siltstone and chert; some diabase sills;

Sediment-Sill Unit: thinly bedded to massive argillite, siltstone and chert with interlayered sills of diabase;

Myra Formation: basic to rhyodacitic banded tuff, breccia and (?) lava; thinly bedded to massive argillite, siltstone, chert;

Nitinat Formation: metabasaltic lavas, pillowed or agglomeratic, commonly with large conspicuous uraltized pyroxene phenocrysts and amygdules of quartz and dark green minerals; minor massive to banded tuff.

**SAWYER CONSULTANTS INC.**

The lowest of these four units is comprised almost entirely of intermediate to basic volcanics and Muller has proposed that the name Nitinat Formation, formerly used in a different context, be applied to rocks of this unit. Overlying the Nitinat volcanics are a thick succession of bedded volcanic and sedimentary rocks which include volcanic (rhyolitic to dacitic) breccias, tuff and flows as well as argillite, siltstone, greywacke and minor conglomerate. The name Myra Formation has been proposed by Muller for this succession which probably is unconformable on the Nitinat Formation. It is of interest that the Myra Formation are the host rocks to the Western Mines massive sulphide deposits in the Buttle Lake area.

The geology of the Raft claims area is of considerable interest; there has been no detailed geological mapping in the area and there was no follow-up on the geochemically anomalous creeks discovered in the 1960's Gunnex Ltd. program. The occurrence of Myra Formation rocks in the Summit Lake area immediately adjacent indicates such units might possibly underlie part of the Raft claims. The Myra Formation hosts volcanogenic sulphide deposits owned by Westmin Resources at Buttle Lake to the north, and the Formation has become a favourable exploration target in recent years.

#### GEOCHEMICAL SURVEY - 1983

During the period July 19th to July 24th, 1983, a two-man sampling crew under the direction and supervision of H. Laanela, Geologist, carried out a geochemical soil and silt sampling survey over the Raft 1 and Raft 2 claims.

The original program was intended to sample the creeks draining the ridge extending south from Mount McQuillan where the earlier Gunnex Ltd. surveys carried out in the 1960's had outlined Total Heavy Metal anomalies in several creeks. However, logging activities in the area since the 1960's has caused extensive disturbance on the ridge sides with many of the creeks no longer flowing and others filled with logging and road building debris.

In order to carry out a meaningful geochemical survey the system of logging roads on the ridge sides were utilized for access on foot and soil samples were taken from areas of undisturbed soils uphill from the roads, while all the tributary creeks crossed by the roads were carefully examined and only those creeks with active sediments free of debris were silt sampled.

The soil samples were taken from the "B" horizon in areas as undisturbed by the logging as was possible and where a soil profile was recognizable. Silt samples were collected from active sediments in creeks which were clear of logging debris and there appeared not to have been any influx of slide material or debris from road building.

The samples, both soil and silt, were collected in Kraft paper envelopes with the sample number marked on and the location carefully plotted on the maps. The samples were delivered to Bondar-Clegg & Company Ltd. of North Vancouver for geochemical analyses for copper, lead, zinc, silver and gold.

The samples were dried and sieved, with the -80 mesh fraction used for analysis. Metal extractions for copper, lead, zinc and silver were made using HNO<sub>3</sub>-HCl Hot Extraction. Concentrations were determined in parts per million by atomic absorption techniques. Metal extraction for gold was made using Aqua Regia with concentrations determined in parts per billion by Fire Assay and atomic absorption techniques. A copy of the Geochemical Analyses Report is enclosed as Appendix A.

The results were plotted on 1:10,000 maps made from enlargements of the area of interest on the Department of Energy, Mines & Resources Canada map, NTS 92 F/2 - Alberni Inlet, Edition 4. The copper-lead-zinc values for stream sediment samples are plotted on Map 1 with the values for the copper-lead-zinc soil samples plotted on Map 2. The results for gold and silver are plotted on two maps, Map 3 for stream sediment samples and Map 4 for soil samples.

#### DISCUSSION OF RESULTS

The geochemical soil and silt sampling program carried out over the Raft 1 and Raft 2 claims in July 1983 has outlined several areas of interest which are worthy of further investigation.

The geochemical results for soils and sediments were separately subjected to standard statistical treatment from which the following figures are derived:

		<u>Soil Samples</u>	
<u>Copper</u>	Number of samples	=	70
	Mean	=	90.30
	Standard deviation	=	66.50
	Mean + 2 x Standard deviation	= Anomalous	= 223 ppm
<u>Lead</u>	Number of samples	=	70
	Mean	=	6.31
	Standard deviation	=	3.42
	Mean + 2 x Standard deviation	= Anomalous	= 13 ppm
<u>Zinc</u>	Number of samples	=	70
	Mean	=	65.57
	Standard deviation	=	75.50
	Mean + 2 x Standard deviation	= Anomalous	= 216 ppm

**SAWYER CONSULTANTS INC.**



on the west side and southern nose of the ridge. An area on the east side of the Mount McQuillan ridge, in the east part of the Raft 1 claim, has an area of anomalous values in copper-zinc and lead-silver in both soils and stream sediments.

There are several other scattered anomalous values on the claims; these are isolated values and do not appear to be of interest.

### CONCLUSIONS AND RECOMMENDATIONS

Three areas of anomalous geochemical soil and stream samples have been outlined on the Raft 1 and Raft 2 claims which are recommended for further investigation.

The first area of interest occurs on the western side of the Mount McQuillan ridge where anomalous soil values occur in an area underlain by Myra Formation volcanic rock, (Muller, 1980). The polymetallic massive sulphide deposit of Westmin Resources at Buttle Lake is hosted by Myra Formation rocks and the occurrence of anomalous values in copper, zinc, silver and gold may be indicative of similar mineralization on the Raft claims.

A second area of interest occurs on the eastern side of the Mount McQuillan ridge on the Raft 1 claim where one creek is anomalous, over the full length, in lead and silver with anomalous gold values at the top of the creek and at the bottom. Soil samples around the head of the creek are also anomalous. This area has been mapped as underlain by Nitinat Formation but geological mapping during the geochemical survey located volcanic tuffs and chloritic shear zones in this area. The presence of these volcanic tuffs, typical of the Myra Formation, as well as anomalous values in metals considered diagnostic of the Myra Formation, may indicate its presence on the east side of the Mount McQuillan ridge.

A third area with interesting geochemical anomalies also occurs on the eastern side of Mount McQuillan ridge but on the northern edge of the Raft 1 claim. A couple of small creeks are anomalous in gold and copper as are several soil samples in the same area.

It is recommended that further exploration be carried out on these areas of interest outlined by the geochemical survey. The first area of interest should be explored further with a cut line grid and geochemical soil sampling with concurrent geological mapping and rock sampling.

The second and third areas of interest should be explored further by a relatively wide spaced cut-line grid and geochemical soil sampling in order to further refine the anomalous area. Geological mapping and rock sampling should also be carried out to confirm the presence of Myra Formation volcanics.

Depending on the results from the recommended continuing exploration program, the further testing of areas of interest by bulldozer trenching and diamond drilling would be warranted.

Respectfully submitted,

SAWYER CONSULTANTS INC.



A handwritten signature in dark ink, appearing to read "Gordon D. House".

Gordon D. House, M.S., F.G.A.C.

SAWYER CONSULTANTS INC.

CERTIFICATE

I, Hugo Laanela, of Ottawa, Ontario, do hereby certify:

- 1) That I am a geologist, graduate of University of British Columbia, Vancouver, B.C., in 1961 with a B.A. in Geology.
- 2) That I am a member of The Association of Exploration Geochemists, The Canadian Institute of Mining and Metallurgy, and The Australasian Institute of Mining and Metallurgy.
- 3) That I have practised my profession as a mining exploration geologist since 1961 to 1966 and 1973 to present in Canada, including British Columbia, Yukon, Northwest Territories, Alberta, Saskatchewan, Ontario, Northern Quebec, New Brunswick and Nova Scotia, and during 1966 to 1972 as a regional geologist in Australia.
- 4) That the information, opinions and recommendations in this report are based on field work carried out by myself or under my direct field supervision.
- 5) That I have no interest in any of the subject properties of this report, nor of the shares of this Company.



Hugo Laanela

Dated at Vancouver, British Columbia, this 18th day of August, 1983.

**SAWYER CONSULTANTS INC.**

CERTIFICATE OF QUALIFICATION

I, Gordon D. House, of North Vancouver, British Columbia,  
DO HEREBY CERTIFY:

1. That I am a Consulting Geologist, a graduate of Trinity College, Dublin, in 1961 with a B.A. in Honors Natural Science - Geology. I received a M.S. degree in Geology from the University of Alaska, Fairbanks, in 1980.
2. That I am a Member of The Institution of Mining and Metallurgy, London, since 1964, and a Registered Chartered Engineer with the Council of Engineering Professions, London. I am a Fellow of the Geological Society, London; a Member of the Society of Mining Engineers of the American Institute of Mining, Metallurgical and Petroleum Engineers; a Member of the Canadian Institute of Mining and Metallurgy; and a Fellow of the Geological Association of Canada.
3. That I have practised my profession as a Geologist since 1962 in Ireland and West Africa; since 1965 in British Columbia, Yukon, Northwest Territories, Saskatchewan, Manitoba, Ontario, Alaska, Arizona, California, Nevada and Idaho. I have undertaken professional visits to Germany, Australia, New Zealand, Fiji, and South Africa.
4. That the information, opinions and recommendations in this report are based on field work carried out by others in July 1983 and work previously carried out in the area by Sawyer Consultants Inc. in 1979, 1980, 1981 and 1982.
5. That I have no direct or indirect interest in any of the subject properties of this report, nor in the shares or securities of Jan Resources Ltd., nor do I expect to receive any such interest.



*Gordon D. House*  
Gordon D. House, M.S., F.G.A.C.

Dated at Vancouver, British Columbia, this 18th day of August, 1983.

**SAWYER CONSULTANTS INC.**

APPENDIX A

Copy of Geochemical Analyses Report

**SAWYER CONSULTANTS INC.**

RECEIVED AUG 1 0 1983

REPORT: 123-1742

FROM: SAWYER CONSULTANTS INC.  
DATE: 09-AUG-83 PROJECT: RAFT

SUBMITTED BY: G HOUSE

ELEMENT	LOWER DETECTION LIMIT	EXTRACTION	METHOD	SIZE FRACTION	SAMPLE TYPE	SAMPLE PREPARATIONS
Cu	1 PPM	HNO3-HCL HOT EXTR	Atomic Absorption	-80	OTHER	DRY, SEIVE -80
Pb	2 PPM	HNO3-HCL HOT EXTR	Atomic Absorption	-80		RETENTION OF REJECTS
Zn	1 PPM	HNO3-HCL HOT EXTR	Atomic Absorption	-80		
As	.2 PPM	HNO3-HCL HOT EXTR	Atomic Absorption	-80		
Au	5 PPB	AQUA REGIA	Fire Assay AA	-80		

REPORT COPIES TO: SAWYER CONSULTANTS INC.

INVOICE TO: SAWYER CONSULTANTS INC.

REMARKS:

RECEIVED AUG 10 1983

REPORT: 123-1742 PROJECT: RAFT

PAGE 1

SAMPLE NUMBER	ELEMENT UNITS	Cu PPM	Pb PPM	Zn PPM	As PPM	Au NOTES PPB	SAMPLE NUMBER	ELEMENT UNITS	Cu PPM	Pb PPM	Zn PPM	As PPM	Au NOTES PPB
S R-29		81	10	66	<0.2	<5	S R-303		33	4	39	0.2	5
S R-30		51	8	56	0.2	<5	S R-304		95	6	60	0.4	5
S R-31		47	8	34	0.3	<5	S R-305		131	4	61	0.2	5
S R-32		33	11	35	0.2	<5	S R-306		79	6	33	0.2	5
S R-33		313	7	253	<0.2	5	S R-307		79	5	43	<0.2	10
S R-34		142	7	81	0.5	10	S R-308		98	3	27	<0.2	<5
S R-35		108	5	95	0.5	<5	S R-309		192	2	66	<0.2	<5
S R-36		42	7	30	<0.2	<5	S R-310		57	5	33	<0.2	5
S R-38		75	9	46	0.6	5	S R-311		78	5	41	<0.2	5
S R-39		64	6	33	<0.2	<5	S R-312		56	7	39	<0.2	30
S R-40		78	5	36	0.2	5	S R-313		69	5	55	<0.2	5
S R-41		70	6	37	0.2	<5	S R-314		139	3	39	<0.2	<5
S R-101		45	5	41	0.4	<5	S R-315		126	2	33	<0.2	5
S R-102		68	6	57	0.2	10	S R-316		98	5	34	<0.2	5
S R-103		87	25	67	<0.2	40	S R-317		88	4	61	<0.2	<5
S R-104		12	7	28	<0.2	<5	S R-318		75	7	86	<0.2	50
S R-105		56	6	61	0.2	<5	S R-319		145	11	73	<0.2	15
S R-106		53	5	47	0.2	5	S R-320		84	9	51	0.2	5
S R-107		29	9	49	0.3	<5	S R-321		145	6	73	0.2	10
S R-108		29	9	37	<0.2	10	S R-322		60	6	35	0.3	5
S R-109		46	5	47	0.4	<5	S R-323		405	8	575	0.6	5
S R-110		75	5	56	0.2	<5	S R-324		83	5	40	0.2	<5
S R-111		46	5	47	<0.2	10	S R-325		254	5	302	0.8	<5
S R-112		208	7	47	0.5	5	S R-326		188	5	131	<0.2	5
S R-113		129	4	53	<0.2	10	S R-327		58	3	29	<0.2	<5
S R-114		52	5	60	0.3	5	S R-328		17	5	16	<0.2	<5
S R-115		41	5	38	0.2	10	S R-329		165	6	62	<0.2	<5
S R-116		73	4	63	<0.2	<5	S R-330		77	9	36	<0.2	<5
S R-117		54	5	55	<0.2	<5	T R-1		130	7	110	<0.2	10
S R-118		90	4	68	0.2	5	T R-2		144	6	103	<0.2	5
S R-119		64	6	51	0.3	10	T R-3		91	12	67	<0.2	45
S R-120		79	6	61	0.4	25	T R-4		70	19	58	<0.2	35
S R-121		46	8	49	0.2	10	T R-5		76	7	61	<0.2	170
S R-122		100	8	76	<0.2	<5	T R-6		125	6	98	<0.2	10
S R-123		93	7	72	<0.2	10	T R-7		67	9	70	<0.2	165
S R-124		53	5	39	<0.2	5	T R-8		65	8	59	0.4	15
S R-125		38	4	34	<0.2	10	T R-9		65	11	64	0.3	25
S R-126		34	21	40	0.2	5	T R-10		78	9	65	0.3	15
S R-301		23	4	21	0.2	<5	T R-11		67	10	69	0.3	25
S R-302		46	5	38	0.4	<5	T R-12		99	14	83	0.4	65

REPORT: 123-1742 PROJECT: RAFT

PAGE 2

SAMPLE NUMBER	ELEMENT UNITS	Cu PPM	Pb PPM	Zn PPM	As PPM	AU NOTES PPM
T R-13		100	5	94	<0.2	5
T R-14		116	6	56	0.2	10
T R-15		84	7	55	0.3	5
T R-16		15	8	22	0.4	<5
T R-17		40	11	52	0.2	<5
T R-18		35	13	36	<0.2	100
T R-19		113	9	55	0.2	<5
T R-20		99	10	70	0.3	5
T R-21		76	7	50	0.3	5
T R-22		84	2	71	0.3	5
T R-23		164	5	69	0.2	<5
T R-24		235	3	85	<0.2	<5
T R-25		214	6	188	<0.2	<5
T R-26		297	6	142	0.2	5
T R-27		143	6	151	0.3	<5
T R-28		160	3	98	<0.2	60
T R-37		148	7	233	0.4	<5
T R-42		115	3	49	<0.2	<5
T R-43		133	3	50	<0.2	<5
T R-201		91	4	47	<0.2	5
T R-202		98	2	52	<0.2	<5
T R-203		169	3	136	<0.2	<5
T R-204		105	2	63	<0.2	10
T R-205		128	3	59	<0.2	<5
T R-206		89	<2	47	<0.2	<5
T R-207		105	2	51	<0.2	<5
T R-208		99	2	50	<0.2	10
T R-209		91	4	60	<0.2	<5
T R-210		283	6	113	<0.2	10
T R-211		167	3	126	0.2	<5

APPENDIX B

Statement of Expenditure and  
List of Personnel for Assessment Purposes

**SAWYER CONSULTANTS INC.**

STATEMENT OF EXPENDITURE

The expenditures itemized below were incurred by Jan Resources Ltd. in connection with a geochemical soil and silt sampling program carried out on the Raft 1 and Raft 2 claims in the period 18th to 24th July, 1983.

Field Work (July 18th to July 24th, 1983)

## Mobilization, demobilization, geochemical sampling

1 geologist, 7 days @ \$300.00/day	\$2,100.00	
2 assistants, 7 days @ \$75.00/man day	<u>1,050.00</u>	
	<u>\$3,150.00</u>	\$3,150.00

Field Crew Expenses

## Room and Board

3 men July 18th to July 24th, 1983	\$ 859.35	
------------------------------------	-----------	--

## Travel

Ferry fare, gas, tire repairs	169.55	
-------------------------------	--------	--

## Equipment, supplies

	<u>102.09</u>	
	<u>\$1,130.99</u>	1,130.99

Analyses

## Geochemical analyses for Cu, Pb, Zn, Au, Ag

110 samples @ \$11.0375/sample		1,214.13
--------------------------------	--	----------

Truck Rental

7 days @ \$50.00/day		350.00
----------------------	--	--------

Office Compilation

1 geologist, 2 days @ \$300.00/day	\$ 600.00	
------------------------------------	-----------	--

Secretarial Service	161.50	
---------------------	--------	--

Report preparation, drafting, map printing, photocopying and disbursement costs	<u>593.01</u>	
	<u>\$1,354.51</u>	1,354.51

TOTAL

		<u>\$7,199.63</u>
--	--	-------------------

  
 Gordon W. House, M.S., F.G.A.C.  
 Agent for Jan Resources Ltd.  
**SAWYER CONSULTANTS INC.**

LIST OF PERSONNELSawyer Consultants Inc.

Gordon D. House, M.S., F.G.A.C.

Consulting Geologist

Coordinating, management, report preparation

2 days @ \$300.00/day

\$ 600.00

H. Laanela, B.A. (July 18th-24th, 1983 inclusive)

Consulting Geologist

Sampling, report preparation, mapping

7 days @ \$300.00/day

2,100.00

T. Schorn (July 18th-24th, 1983 inclusive)

Assistant

Geochemical sampling

7 days @ \$75.00/day

525.00

J. Kokonis (July 18th-24th, 1983 inclusive)

Assistant

Geochemical Sampling

7 days @ \$75.00/day

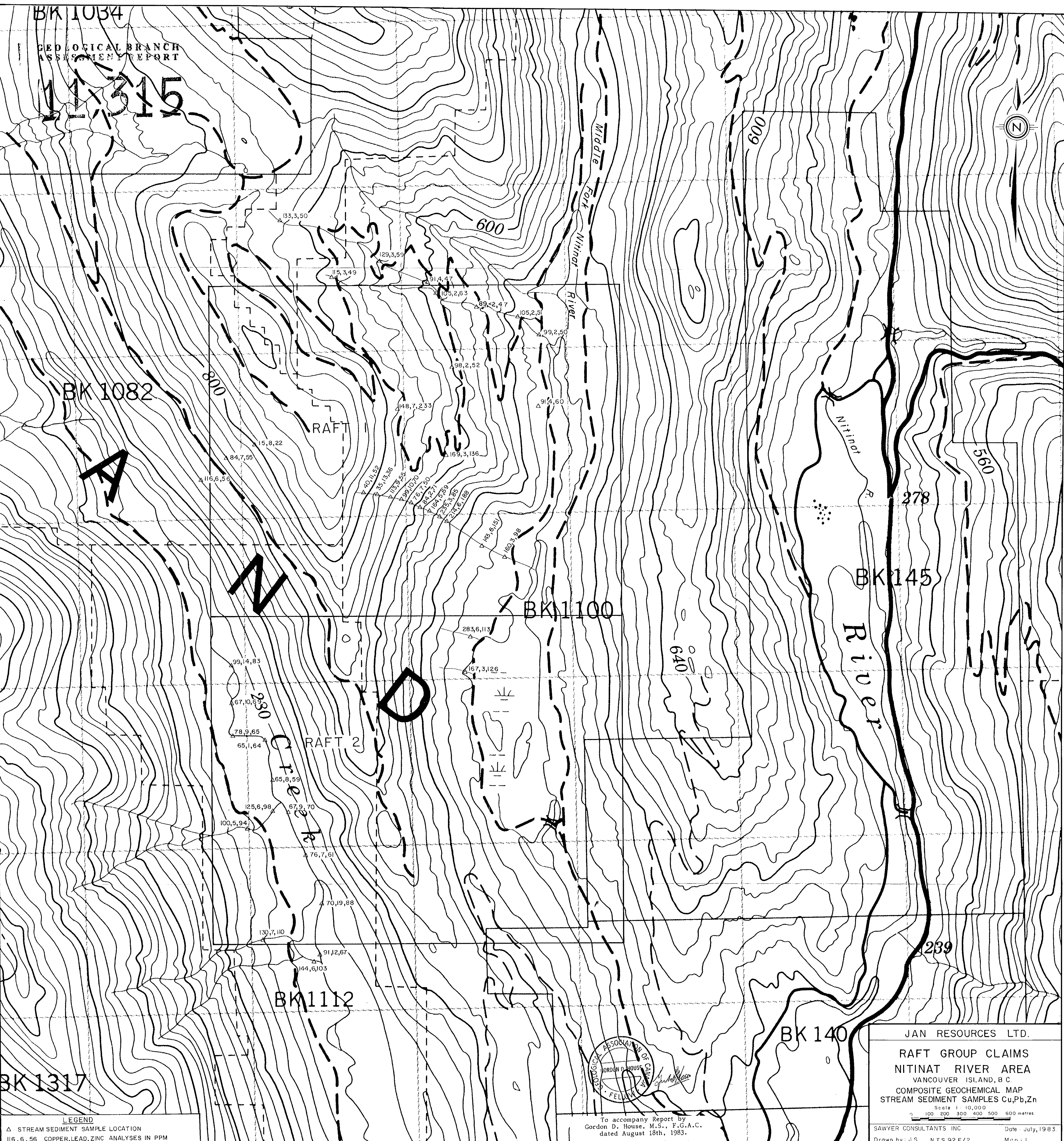
525.00\$3,750.00

  
 Gordon D. House, M.S., F.G.A.C.  
 Agent for Jan Resources Ltd.
**SAWYER CONSULTANTS INC.**

BK 1034

GEOLOGICAL BRANCH  
ASSIGNMENT REPORT

11315



BK 1082

A

N

D

BK 1100

BK 145

River

BK 1112

BK 140

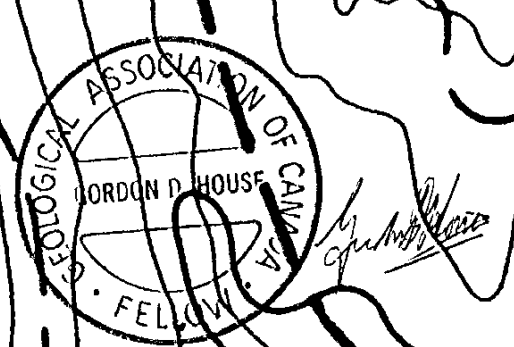
239

JAN RESOURCES LTD.

RAFT GROUP CLAIMS  
NITINAT RIVER AREA  
VANCOUVER ISLAND, B.C.

COMPOSITE GEOCHEMICAL MAP  
STREAM SEDIMENT SAMPLES Cu,Pb,Zn  
Scale 1:10,000  
100 200 300 400 500 600 metres

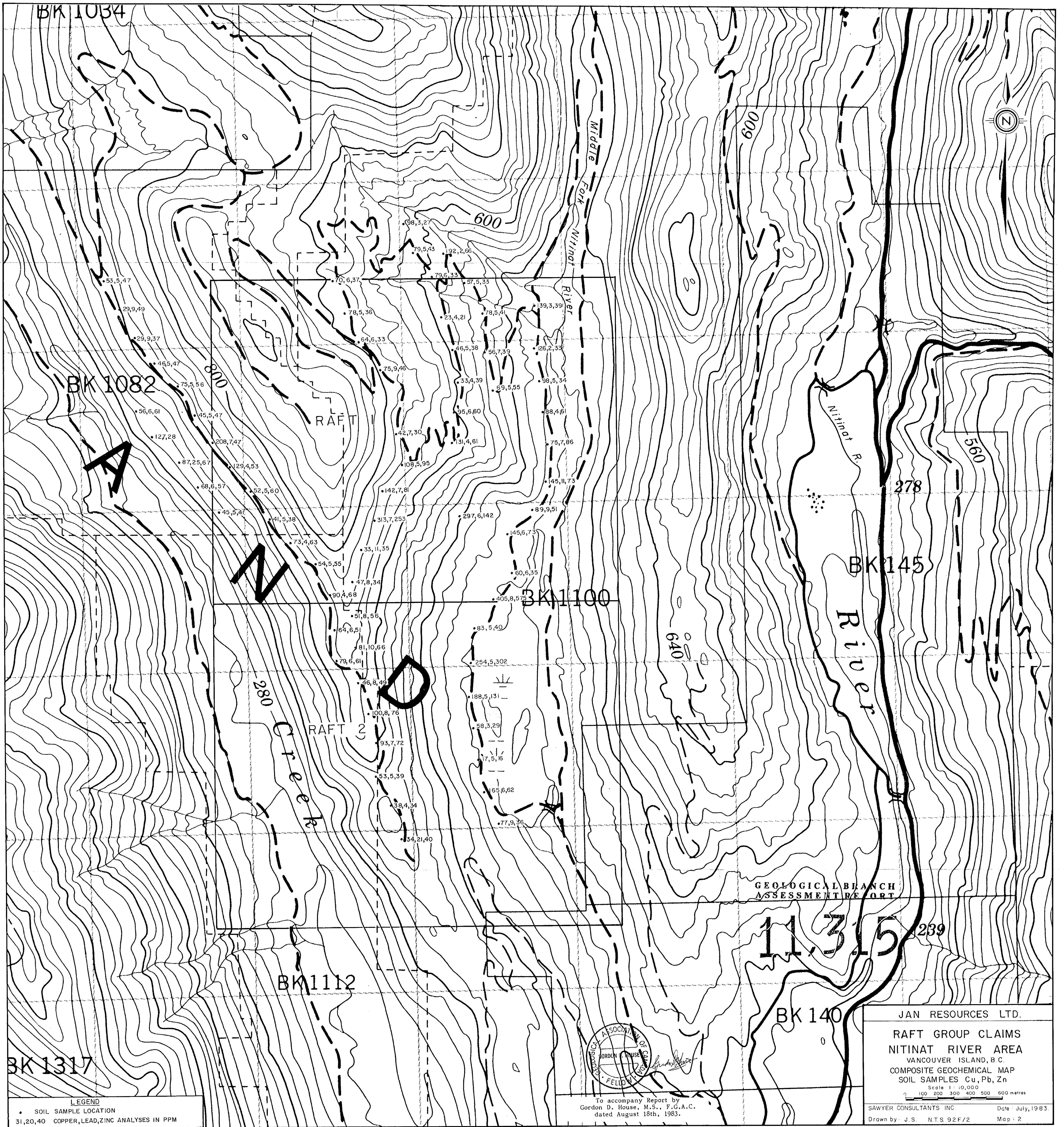
SAWYER CONSULTANTS INC. Date: July, 1983  
Drawn by: J.S. NTS.92.F/2 Map: 1



To accompany Report by  
Gordon D. House, M.S., F.G.A.C.  
dated August 18th, 1983.

LEGEND

△ STREAM SEDIMENT SAMPLE LOCATION  
116,6,56 COPPER, LEAD, ZINC ANALYSES IN PPM



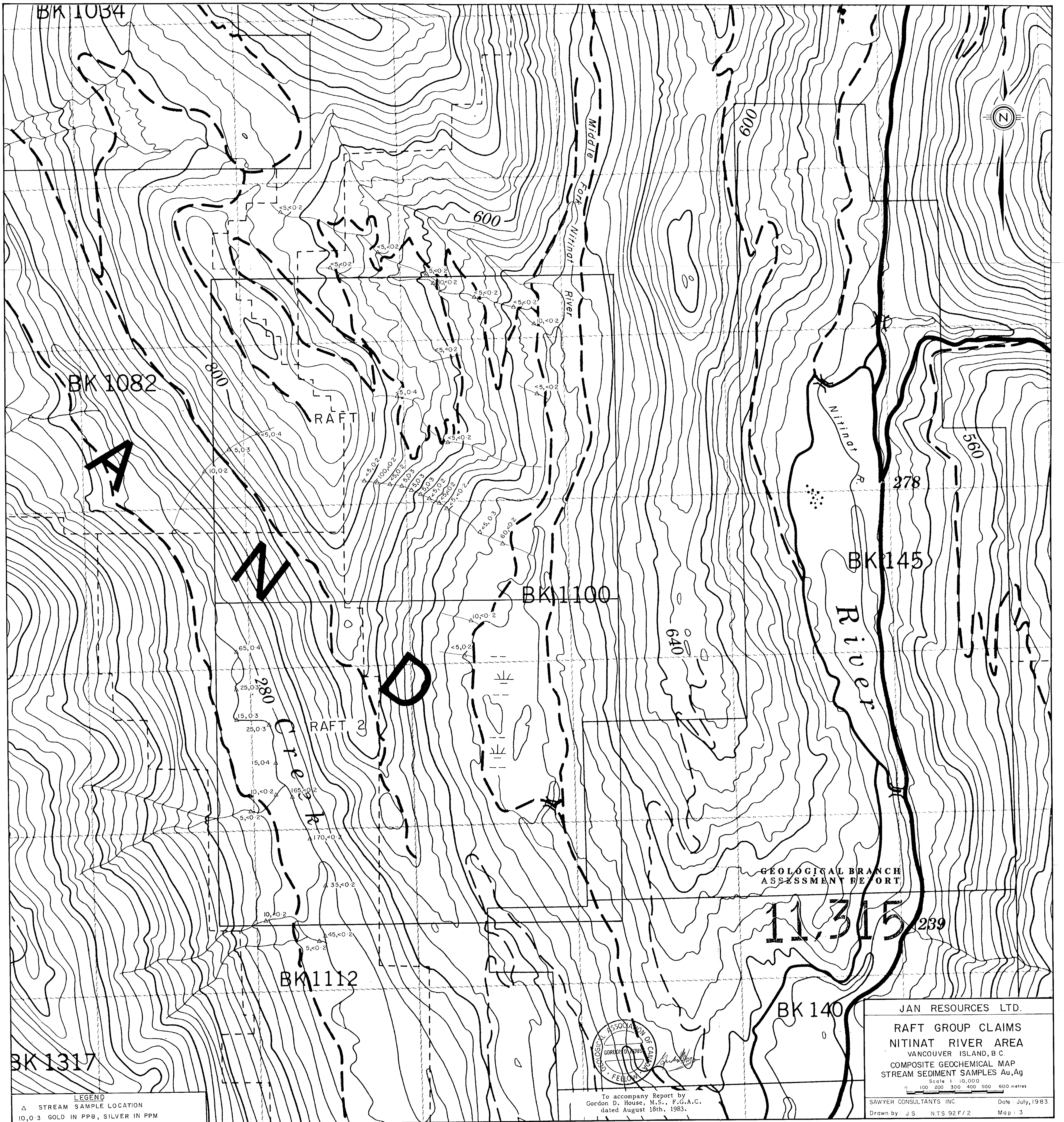
**LEGEND**  
 • SOIL SAMPLE LOCATION  
 31,20,40 COPPER, LEAD, ZINC ANALYSES IN PPM

To accompany Report by  
 Gordon D. House, M.S., F.G.A.C.  
 dated August 18th, 1983.

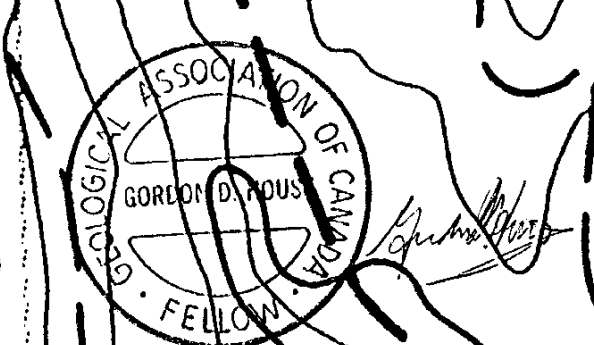
GEOLOGICAL BRANCH  
 ASSESSMENT REPORT

11,315,239

JAN RESOURCES LTD.  
 RAFT GROUP CLAIMS  
 NITINAT RIVER AREA  
 VANCOUVER ISLAND, B.C.  
 COMPOSITE GEOCHEMICAL MAP  
 SOIL SAMPLES Cu, Pb, Zn  
 Scale 1:10,000  
 100 200 300 400 500 600 metres  
 SAWYER CONSULTANTS INC. Date: July, 1983  
 Drawn by: J.S. NTS 92F/2 Map: 2



**LEGEND**  
 ▲ STREAM SAMPLE LOCATION  
 10,0.3 GOLD IN PPB, SILVER IN PPM

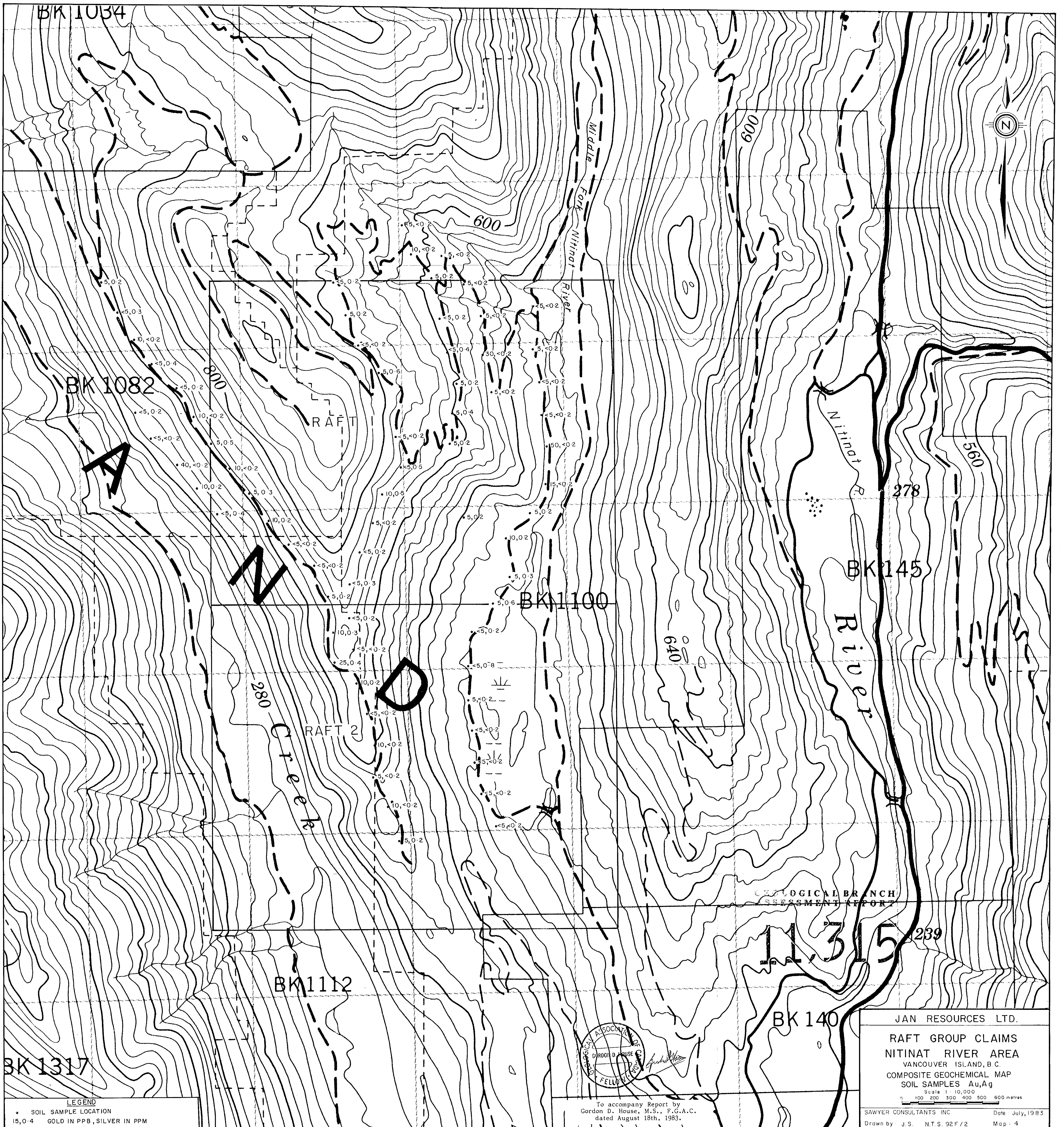


To accompany Report by  
 Gordon D. House, M.S., F.G.A.C.  
 dated August 18th, 1983.

GEOLOGICAL BRANCH  
 ASSESSMENT REPORT

11,315 239

JAN RESOURCES LTD.  
 RAFT GROUP CLAIMS  
 NITINAT RIVER AREA  
 VANCOUVER ISLAND, B.C.  
 COMPOSITE GEOCHEMICAL MAP  
 STREAM SEDIMENT SAMPLES Au,Ag  
 Scale 1:10,000  
 0 100 200 300 400 500 600 metres  
 SAWYER CONSULTANTS INC. Date: July, 1983  
 Drawn by: J.S. NTS 92F/2 Map: 3



BK 1034

BK 1082

BK 1100

BK 145

BK 1112

BK 140

BK 1317

**LEGEND**  
 • SOIL SAMPLE LOCATION  
 15,0.4 GOLD IN PPB, SILVER IN PPM

To accompany Report by  
 Gordon D. House, M.S., F.G.A.C.  
 dated August 18th, 1983.

GEOLOGICAL BRANCH  
 ASSESSMENT REPORT

JAN RESOURCES LTD.  
 RAFT GROUP CLAIMS  
 NITINAT RIVER AREA  
 VANCOUVER ISLAND, B.C.  
 COMPOSITE GEOCHEMICAL MAP  
 SOIL SAMPLES Au,Ag  
 Scale 1:10,000  
 100 200 300 400 500 600 metres  
 SAWYER CONSULTANTS INC Date July, 1983  
 Drawn by J.S. N.T.S. 92F/2 Map - 4