

84-#60-11493  
2 of 2

DU PONT OF CANADA EXPLORATION LIMITED

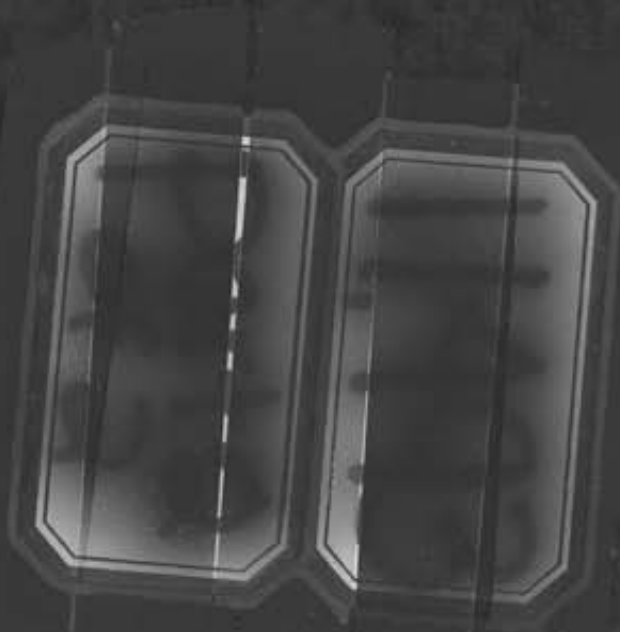
1983 ASSESSMENT REPORT

BILL CLAIM GROUP

LIARD MINING DISTRICT

1984 MARCH 5

DRAWINGS







LEGEND

SOIL SAMPLE SITE  
>10/50 Au (ppb) / As (ppm)

part 2 of 2

GEOLOGICAL BRANCH  
ASSESSMENT REPORT

11,493

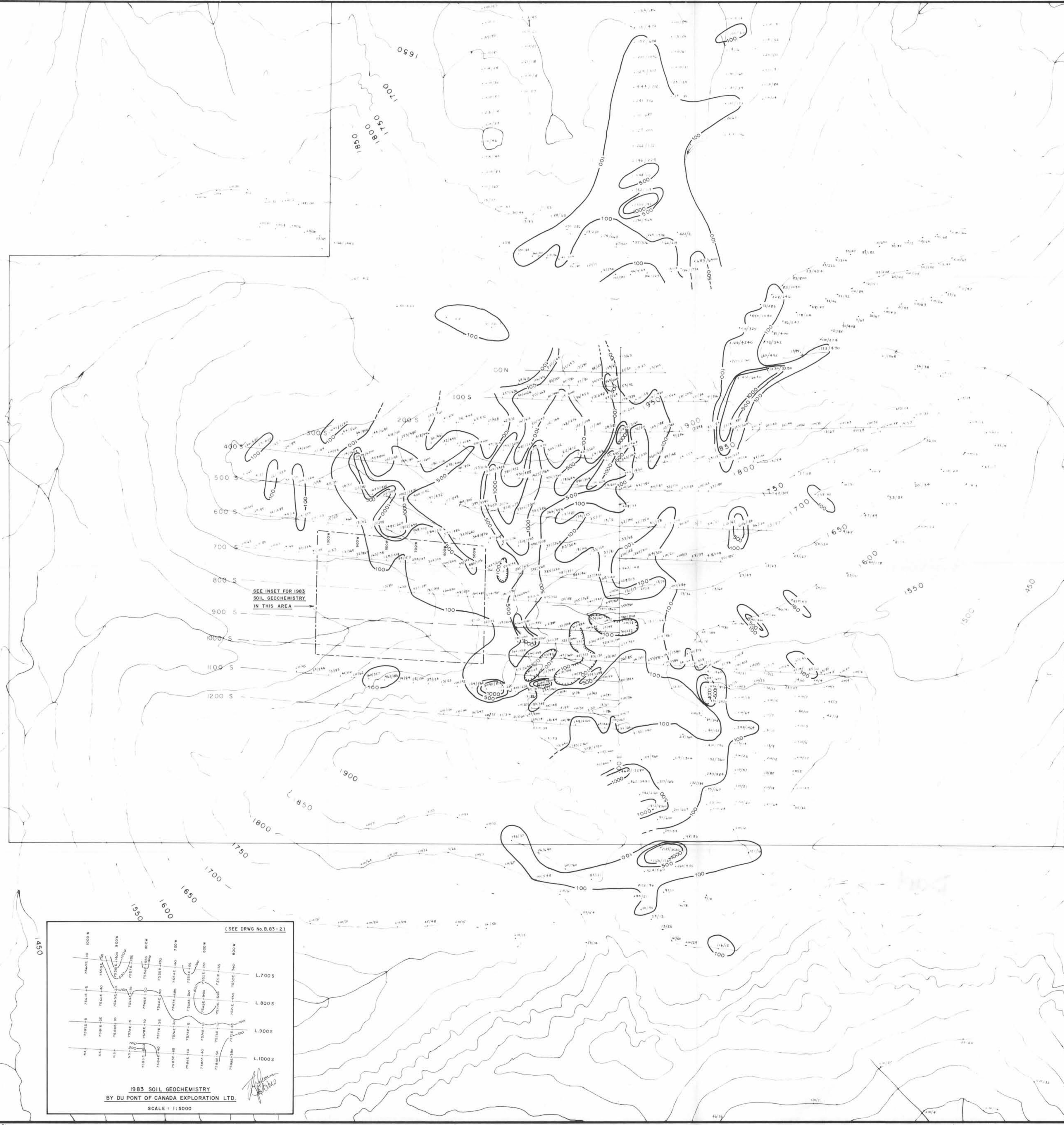


T BIRD CLAIMS and BILL CLAIMS

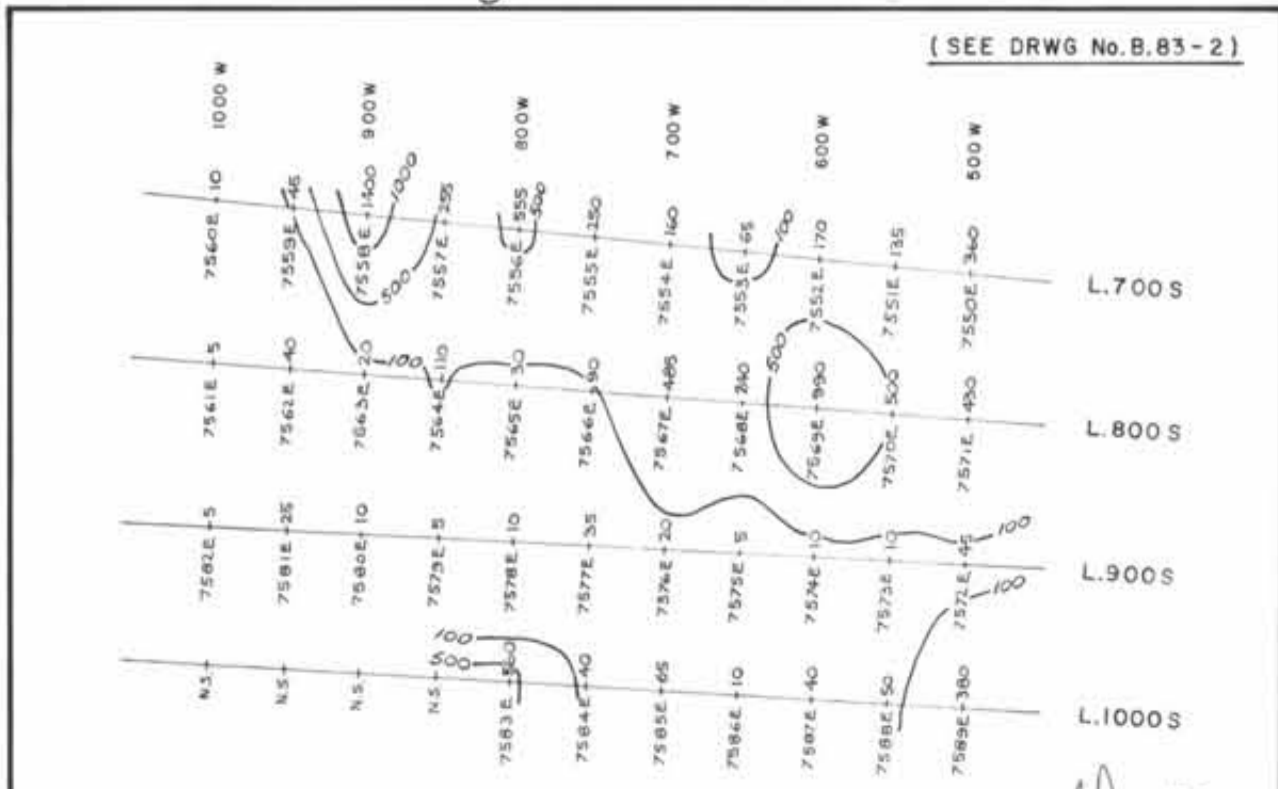
Drawn by	Traced by
Checked by	Reviewed by

SOIL  
GEOCHEMISTRY  
Au (ppb)

Scale 1:5000 Date March, 1982 Plate B 81-2



(SEE DRWG No. B.83-2)



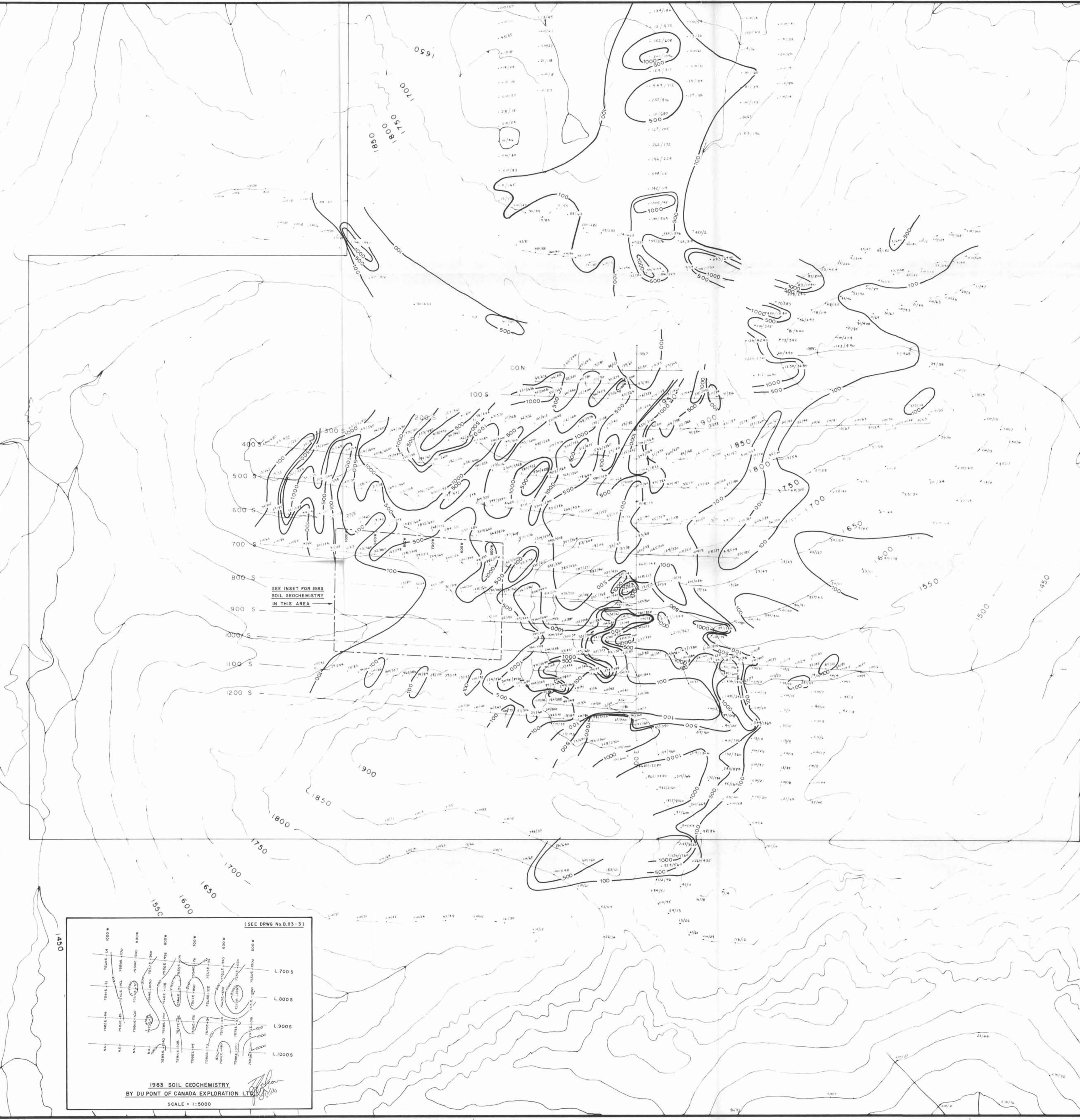
1983 SOIL GEOCHEMISTRY  
BY DU PONT OF CANADA EXPLORATION LTD.  
SCALE 1:5000





LEGEND

• SOIL SAMPLE SITE  
>10/50 Au (ppb) / As (ppm)



SEE INSET FOR 1983 SOIL GEOCHEMISTRY IN THIS AREA

part 2 of 2

GEOLOGICAL BRANCH ASSESSMENT REPORT

11,493

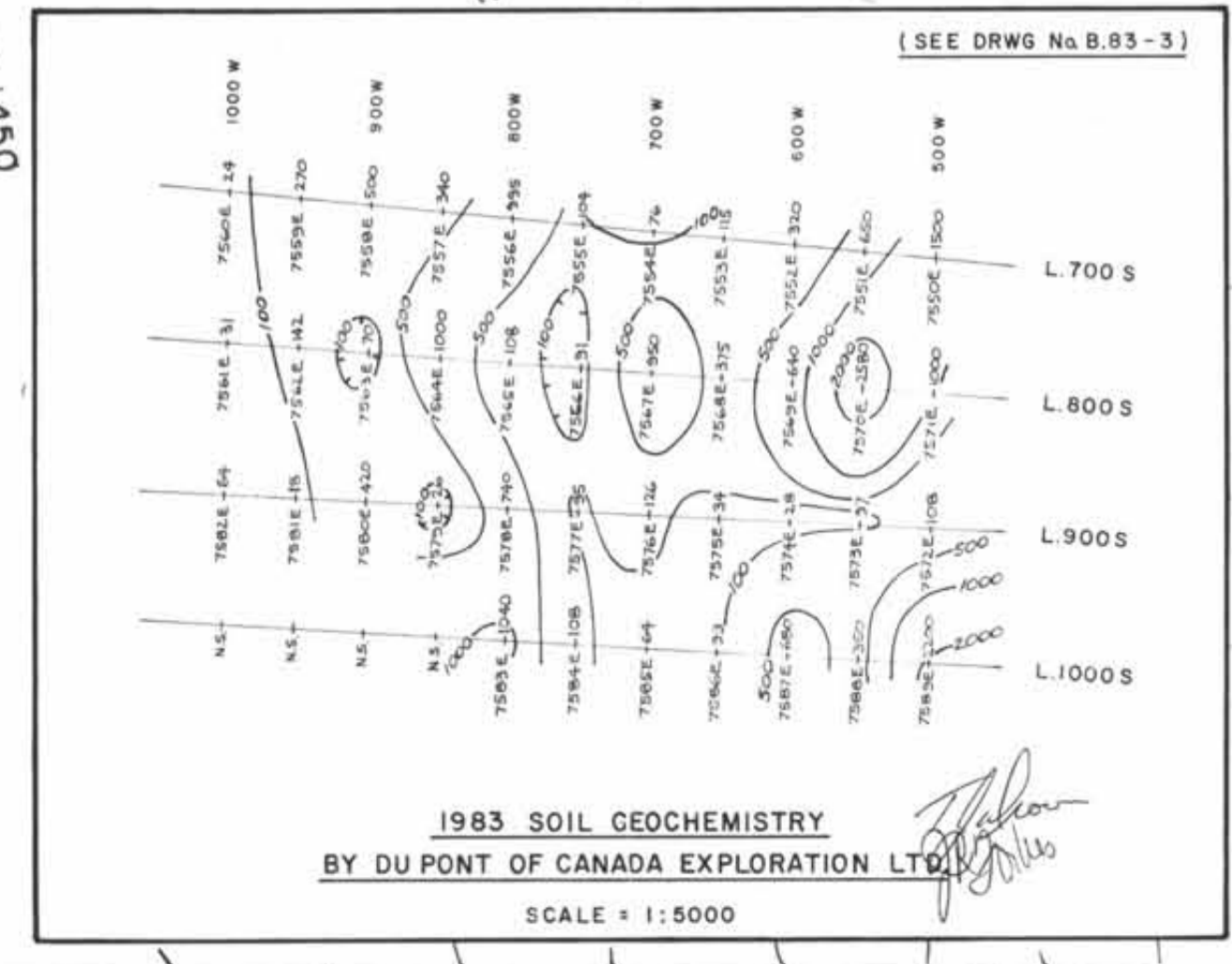


T BIRD CLAIMS and BILL CLAIMS

Drawn by:	Traced by:
Checked by:	Reviewed by:
Date:	Date:

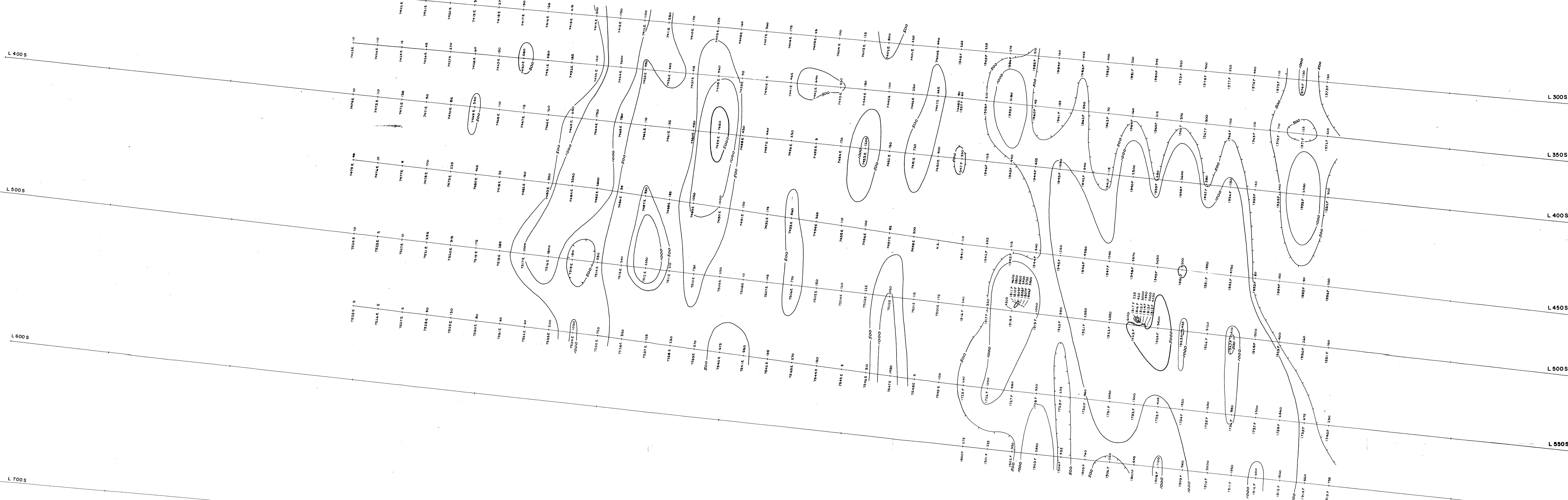
SOIL GEOCHEMISTRY  
As (ppm)

Scale 1:5000 Date March, 1982 Plate B 81-3





1200 W — 1000 W — 1000 W — 900 W — 800 W — 700 W — 600 W — 500 W — 400 W — 300 W — 200 W — 100 W — BASE LINE



**LEGEND**

— 500 & 1000 P.P.B. Au GEOCHEMICAL CONTOURS

— 5000 P.P.B. Au GEOCHEMICAL CONTOUR

17367 — SURVEY GRID LINE & SAMPLE NO.

1400 — VALUE FOR GOLD IN P.P.B.

500 TO 1000 P.P.B. Au

1000 TO 5000 P.P.B. Au

> 5000 P.P.B. Au

Part 2 of 2

NW SHEET	NE SHEET
SW SHEET	SE SHEET

SHEET INDEX

GEOLOGICAL BRANCH  
ASSESSMENT REPORT

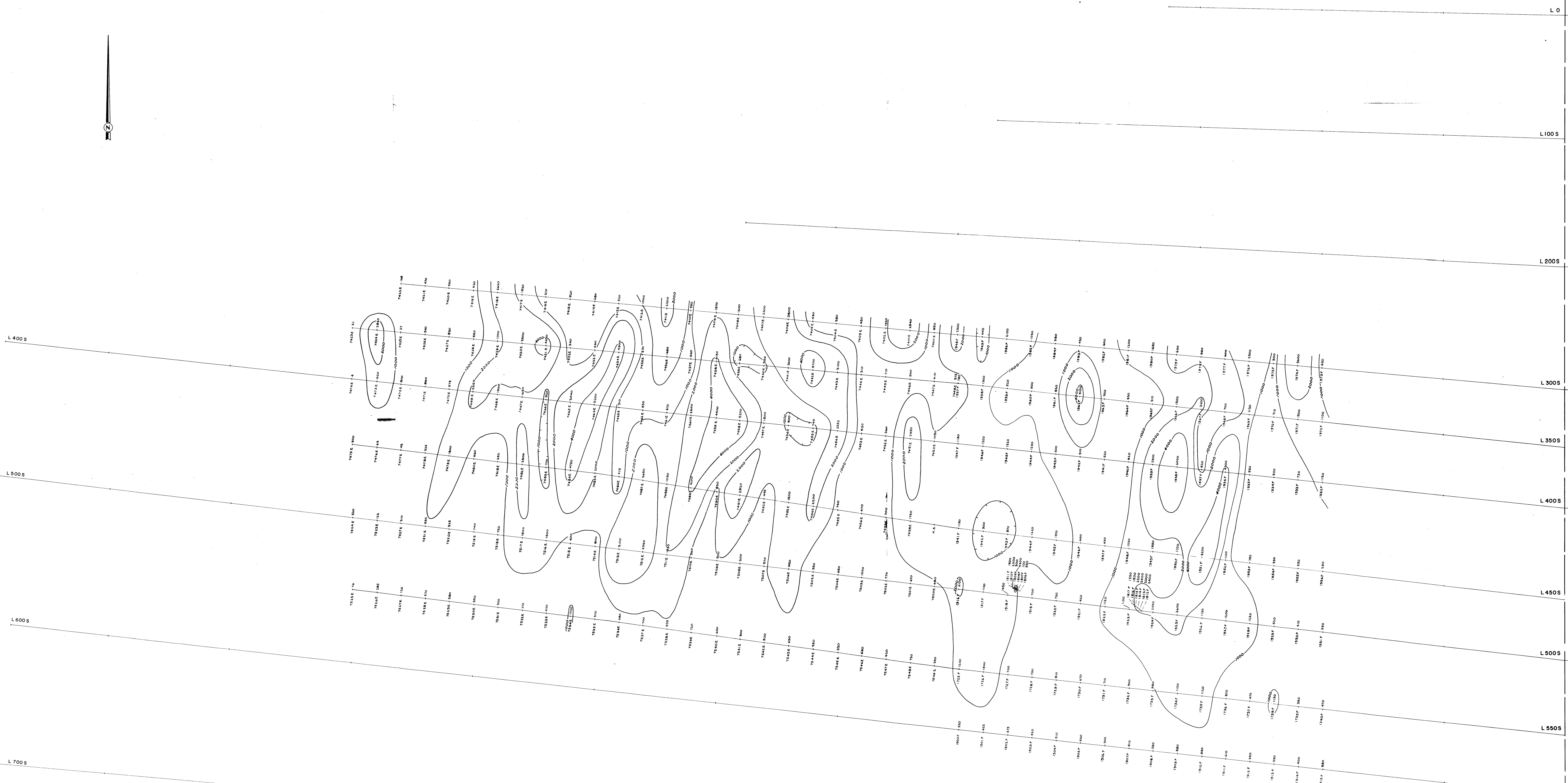
11,493

**EXPLORATION**

**BILL PROJECT**  
**SOIL GEOCHEMISTRY**  
GOLD IN P.P.B.  
STIKINE RIVER AREA, BRITISH COLUMBIA

MAPPED BY: T.A.D., B.A.C. REVISION: 04-8-88  
DATE: 8-8-88 DRAWN BY: S.L.P. PROJECT NO.: 861-00  
DATE: 88-01-18 T.A.D./S.L.P./J.M. DRAW NO.: B.02-7

1200 W 1100 W 1000 W 900 W 800 W 700 W 600 W 500 W 400 W 300 W 200 W 100 W BASE LINE



Part 2 of 2

**LEGEND**

1000, 2000 & 4000 PPM AS GEOCHEMICAL CONTOURS

17127 SURVEY GRID LINE & SAMPLE NO.

870 VALUE FOR ARSENIC IN PPM.

1000 TO 2000 PPM AS

2000 TO 4000 PPM AS

> 4000 PPM AS

SW SHEET	SE SHEET
SW SHEET	SE SHEET

SHEET INDEX

**GEOLOGICAL BRANCH ASSESSMENT REPORT**

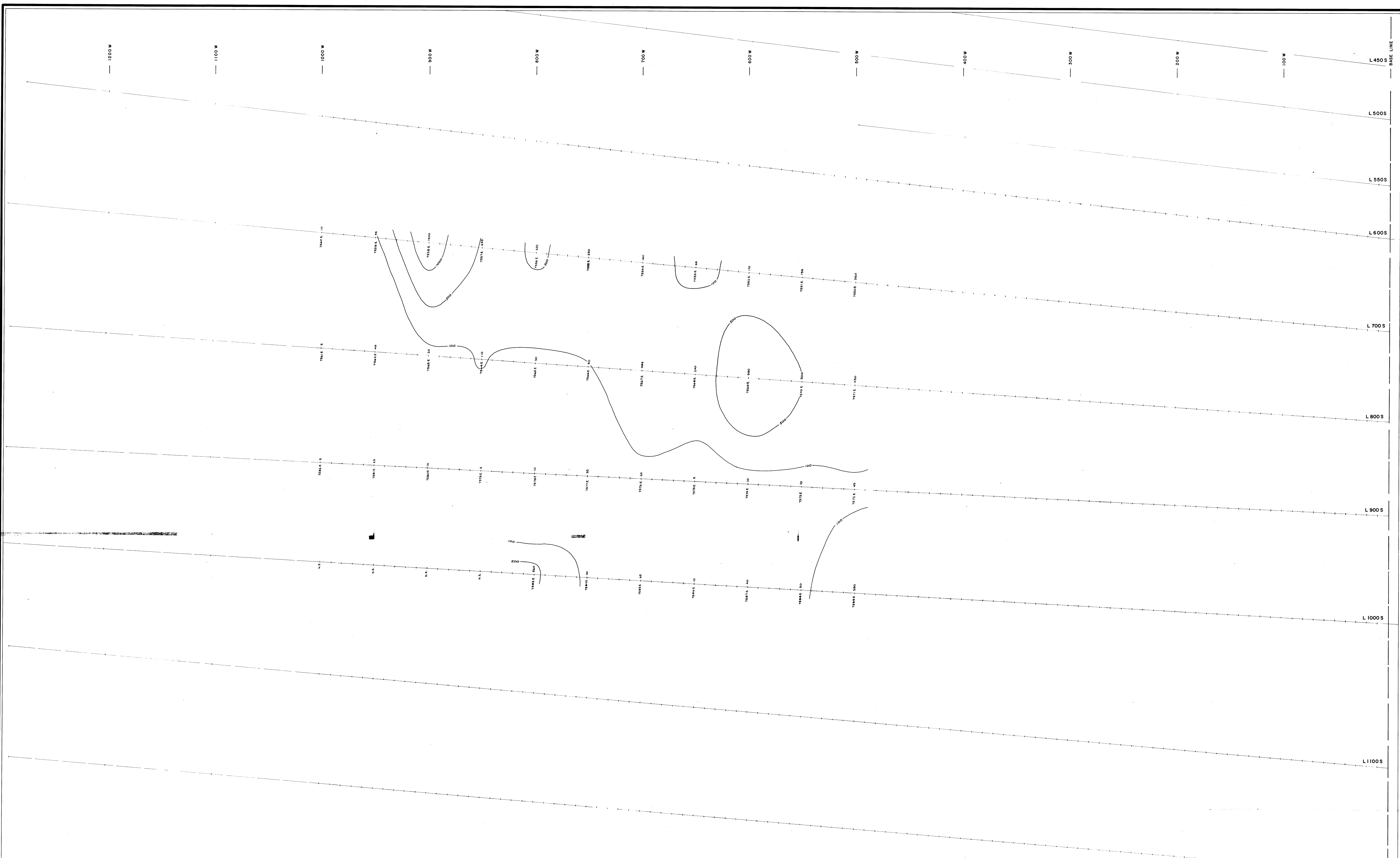
# 11,493

**11,493**

**OU PUN EXPLORATION**

**BILL PROJECT SOIL GEOCHEMISTRY ARSENIC IN PPM. STIKINE RIVER AREA, BRITISH COLUMBIA**

MAPPED BY: T.J.S., M.G. REVISOR: T.J.S. NO. 24 E 15 W  
 DATE: 08/20/00 EDITS: DATE: 08/20/00  
 DRAWN BY: S.L.P. FORUM BOUNDARY SHEET NO. 361-00  
 DATE: 08/20/00 TALS/F.A.L.M. SHEET NO. B.BZ-9



**LEGEND**

— 100, 500 & 1000 P.P.B. Au GEOCHEMICAL CONTOURS

— SURVEY GRID LINE & SAMPLE No.

— VALUE FOR GOLD IN P.P.B.

500 TO 1000 P.P.B. Au

1000 TO 5000 P.P.B. Au

> 5000 P.P.B. Au

GEOLOGICAL BRANCH  
ASSESSMENT REPORT

11,493  
Part 2  
of 2

NW SHEET	NE SHEET
SW SHEET	SE SHEET

SHEET INDEX

**EXPLORATION**

**BILL PROJECT**

**SOIL GEOCHEMISTRY**

**GOLD IN P.P.B.**

STIKINE RIVER AREA, BRITISH COLUMBIA

SCALE 1:1000

MAPPED BY TOLJAKOFF & ASSOCIATES

DATE 88-04-04

DRAWN BY K.L.A.

DATE 88-10-04

REVISED

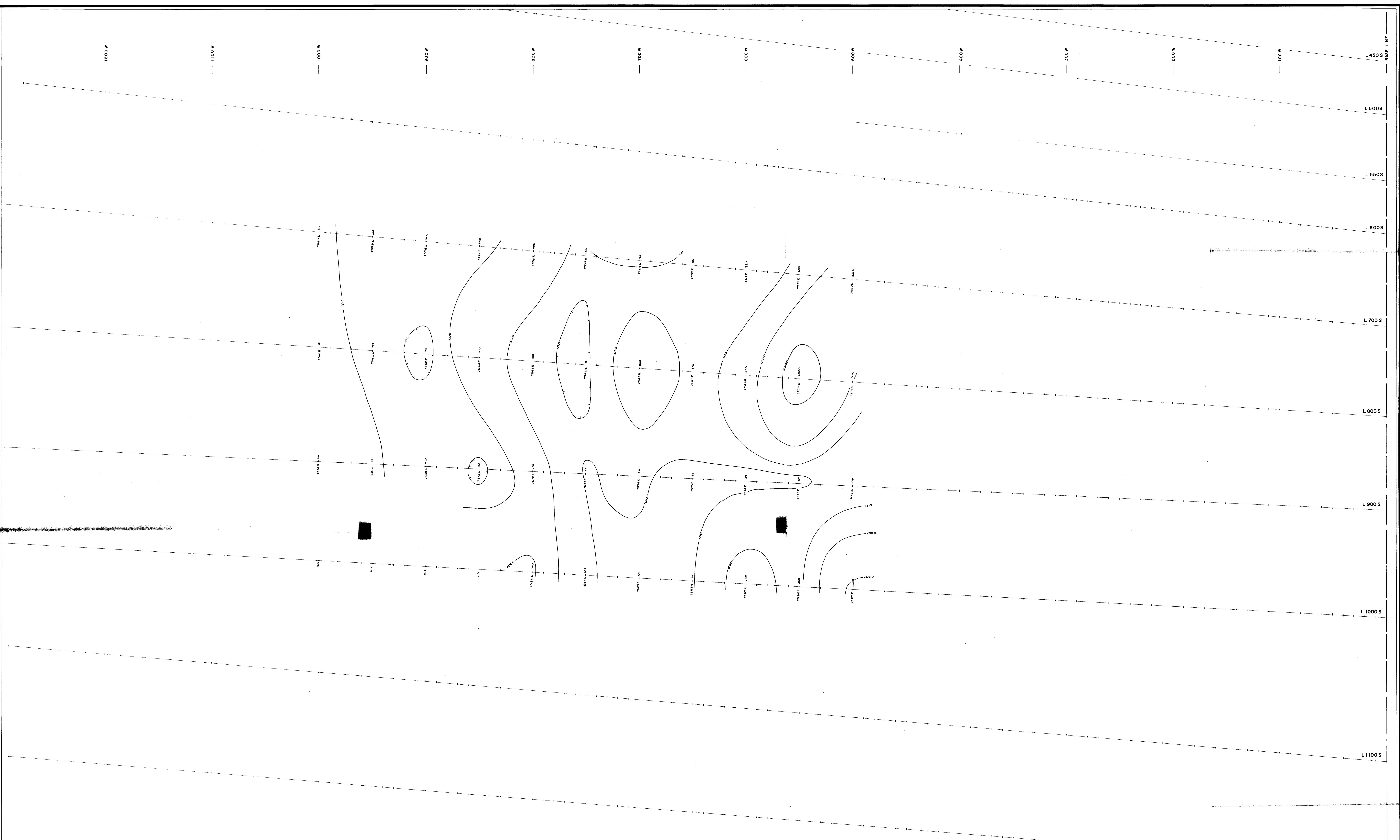
BY J.M.

DATE 88-10-04

ACCT NO. 881-00

DWG NO. 8-83-2





**LEGEND**

100, 500, 1000, 2000 PPM AS GEOCHEMICAL CONTOURS

DEPRESSION

SURVEY GRID LINE & SAMPLE No.

VALUE FOR ARSENIC IN PPM.

1000 TO 2000 PPM AS

2000 TO 4000 PPM AS

> 4000 PPM AS

GEOLOGICAL BRANCH  
ASSESSMENT REPORT

11,493  
part 2  
of 2

NW SHEET	NE SHEET
SW SHEET	SE SHEET

SHEET INDEX

**EXPLOREX**

**BILL PROJECT**  
**SOIL GEOCHEMISTRY**  
**ARSENIC IN PPM.**  
STIKINE RIVER AREA, BRITISH COLUMBIA

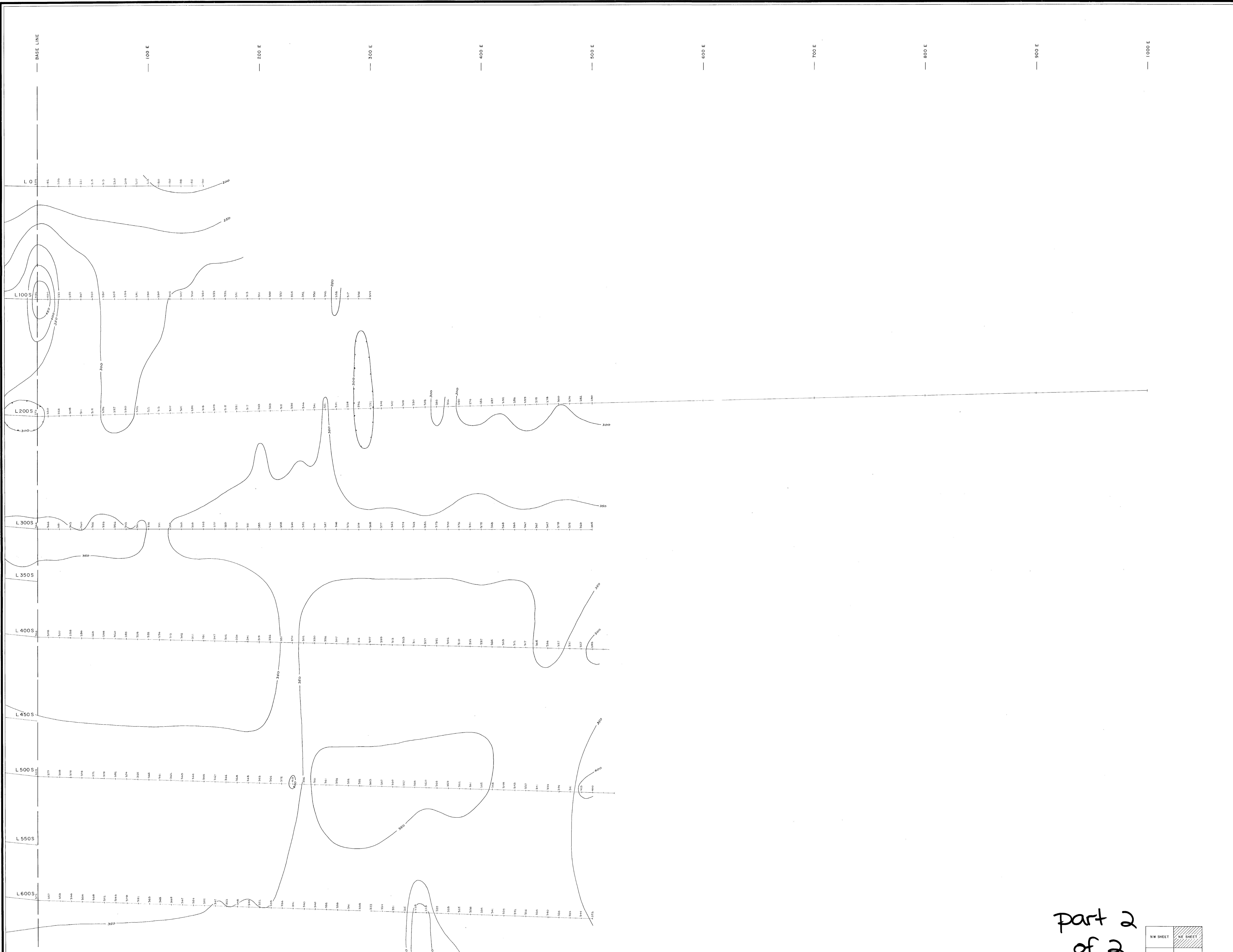
SCALE: 1" = 1000'

DATE: 03/01/00  
DRAWN BY: K.L.S.  
DATE: 08/10/00

ACT NO. 381-00  
DRAW NO. B.83-3







**LEGEND**

> 600 GAMMAS  
 500-600 GAMMAS  
 400-500 GAMMAS  
 300-400 GAMMAS  
 200-300 GAMMAS  
 0 - 200 GAMMAS

MAGNETIC CONTOUR INTERVAL 50 GAMMAS  
 MAGNETIC DEPRESSION

70 SURVEY GRID STATION WITH MAGNETOMETER READINGS IN GAMMA  
 71 AND 88 000 GAMMAS TO EACH READING TO OBTAIN TOTAL MAGNETIC  
 FIELD. ALL READINGS ADJUSTED FOR DIURNAL VARIATION

part 2  
of 2

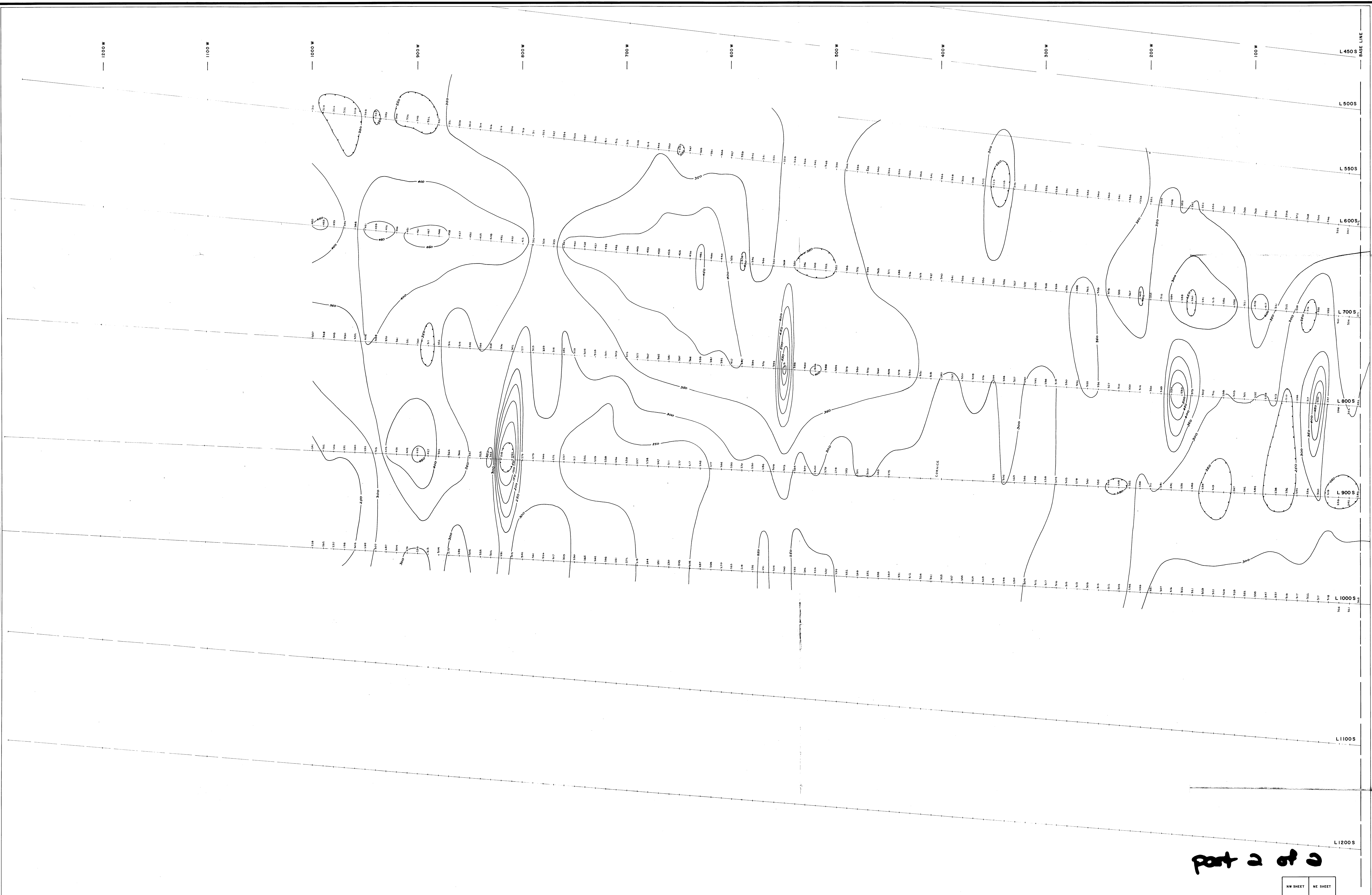
NW SHEET	NE SHEET
SW SHEET	SE SHEET

SHEET INDEX

GEOLOGICAL BRANCH  
ASSESSMENT REPORT

11,493

<b>EXPLORATION</b>	
<b>BILL PROJECT</b>	
<b>MAGNETOMETER SURVEY</b>	
STIKINE RIVER AREA, BRITISH COLUMBIA	
MAPPED BY: T. G. J. M. M. H.	REVISED: N.T.S. No. 04 E 13 W
DATE: 04.08.62	ACCT. No. 041-00
DRAWN BY: K.L.V.	DATE: 05.10.64
	D.W.M. No. B. 63-5



part 2 of 2

**LEGEND**

- > 800 GAMMAS
- 500-800 GAMMAS
- 400-500 GAMMAS
- 300-400 GAMMAS
- 200-300 GAMMAS
- 0-200 GAMMAS
- MAGNETIC DEPRESSION

227 SURVEY GRID STATION WITH MAGNETOMETER READING IN GAMMAS  
 247 800 SE 600 GAMMAS TO EACH READING TO OBTAIN TOTAL MAGNETIC  
 FIELD. ALL READINGS ADJUSTED FOR DIURNAL VARIATION.

NW SHEET	NE SHEET
SW SHEET	SE SHEET

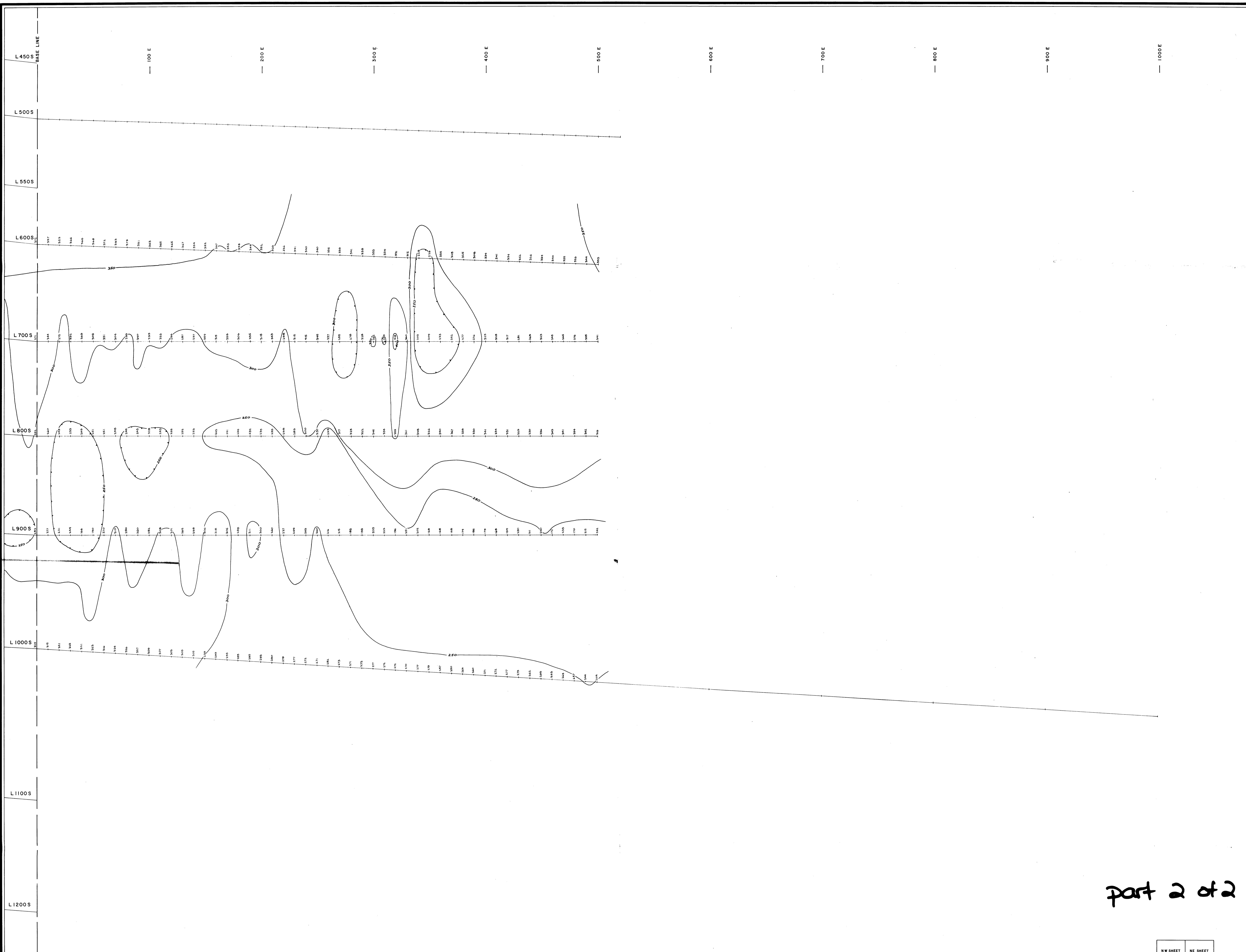
**SHEET INDEX**

**11,493**

GEOLOGICAL BRANCH  
 ASSESSMENT REPORT

<b>EXPLORATION</b>	
<b>BILL PROJECT</b>	
<b>MAGNETOMETER SURVEY</b>	
STIKINE RIVER AREA, BRITISH COLUMBIA	
SCALE 1:1000	
MAPPED BY: TELUS/PAUL M. L.	REVISED: 04-13-88
DATE: 08-08-88	ACCT. NO.: 581-00
DRAWN BY: P.L.L.	DATE: 08-10-88
	DRWG. NO.: B-83-C





- LEGEND**
- 600 GAMMAS
  - 500-600 GAMMAS
  - 400-500 GAMMAS
  - 300-400 GAMMAS
  - 200-300 GAMMAS
  - 0 - 200 GAMMAS
  - MAGNETIC CONTOUR INTERVAL 50 GAMMAS
  - MAGNETIC DEPRESSION

327 SURVEY GRID STATION WITH MAGNETOMETER READINGS IN GAMMAS.  
 328 200 OR 600 GAMMAS TO EACH READING TO OBTAIN TOTAL MAGNETIC  
 FIELD. ALL READINGS ADJUSTED FOR DIURNAL VARIATION.

part 2 of 2

GEOLOGICAL BRANCH  
 ASSESSMENT REPORT  
**11,493**

NW SHEET	NE SHEET
SW SHEET	SE SHEET

SHEET INDEX

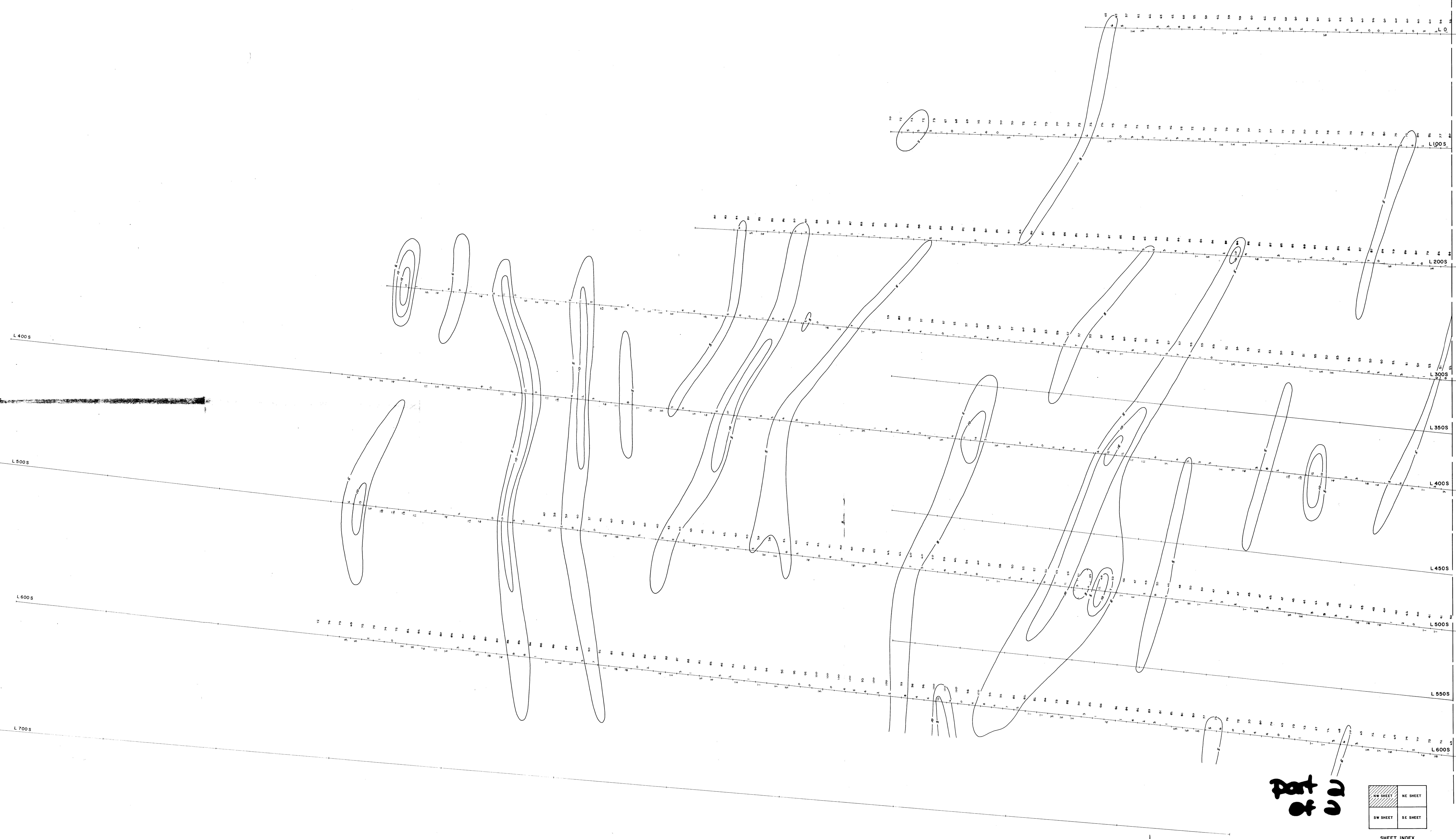
**DU PONT EXPLORATION**  
CANADA

**BILL PROJECT**  
**MAGNETOMETER SURVEY**  
STIKINE RIVER AREA, BRITISH COLUMBIA

SCALE  
1" = 625 FEET

MAPPED BY: TOLICAP/MLM	REVISED:	ACT. NO.: 24 01 25 W
DATE: 82 08 20	DATE:	ACT. NO.: 281-00
DRAWN BY: P.S.A.	DATE:	DRWN. NO.: B.83-7
DATE: 82 10 14		

1200 W 1100 W 1000 W 900 W 800 W 700 W 600 W 500 W 400 W 300 W 200 W 100 W BASE LINE



**LEGEND**  
 — FIELD STRENGTH  
 — SURVEY GRID LINE WITH FRASER FILTERED DIP READINGS  
 POSITIVE DEGREES ON NORTH SIDE OF LINE & NEGATIVE DEGREES ON SOUTH SIDE  
 STATION USED - HAWAII  
 — CONTOUR INTERVAL 5"

**88**  
**00**

NW SHEET	NE SHEET
SW SHEET	SE SHEET

SHEET INDEX

GEOLOGICAL BRANCH  
ASSESSMENT REPORT

**11,493**

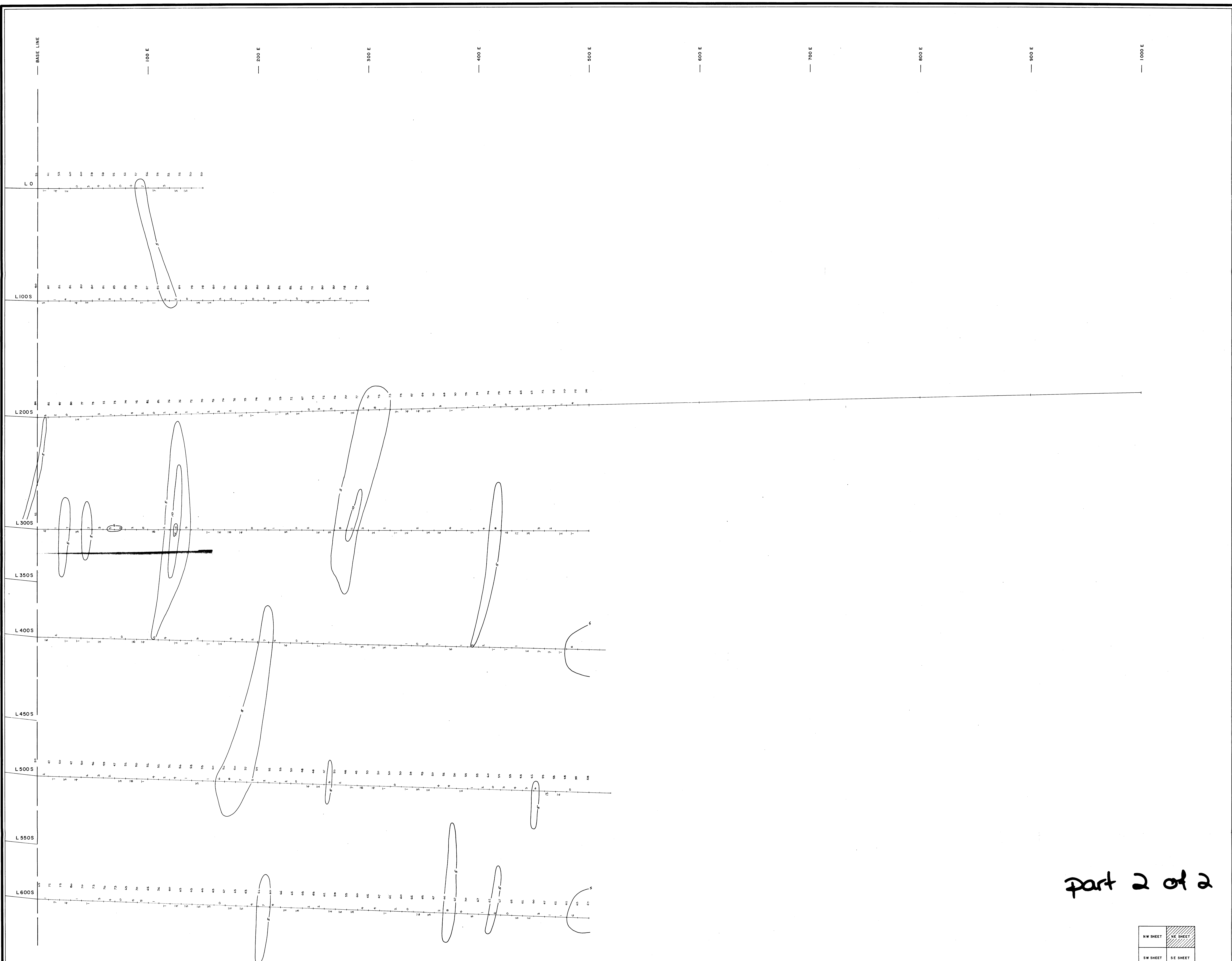
**CALPINE EXPLORATION**  
**BILL PROJECT**  
**VLF - EM SURVEY**  
 STIKINE RIVER AREA, BRITISH COLUMBIA

MAPPED BY: [Signature] DATE: 85-08-00  
 DRAWN BY: [Signature] DATE: 85-10-11

SCALE: 1" = 1000 FEET

ACT NO. 361-00  
 DRAWING NO. B-85-8





**LEGEND**

— FIELD STRENGTH

— SURVEY GRID LINE WITH FRASER FILTERED DIP READINGS  
 POSITIVE DEGREES ON NORTH SIDE OF LINE & NEGATIVE DEGREES ON SOUTH SIDE  
 STATION USED: HAWAII

— CONTOUR INTERVAL 5°

part 2 of 2

NW SHEET	NE SHEET
SW SHEET	SE SHEET

SHEET INDEX

GEOLOGICAL BRANCH  
 ASSESSMENT REPORT

11,493

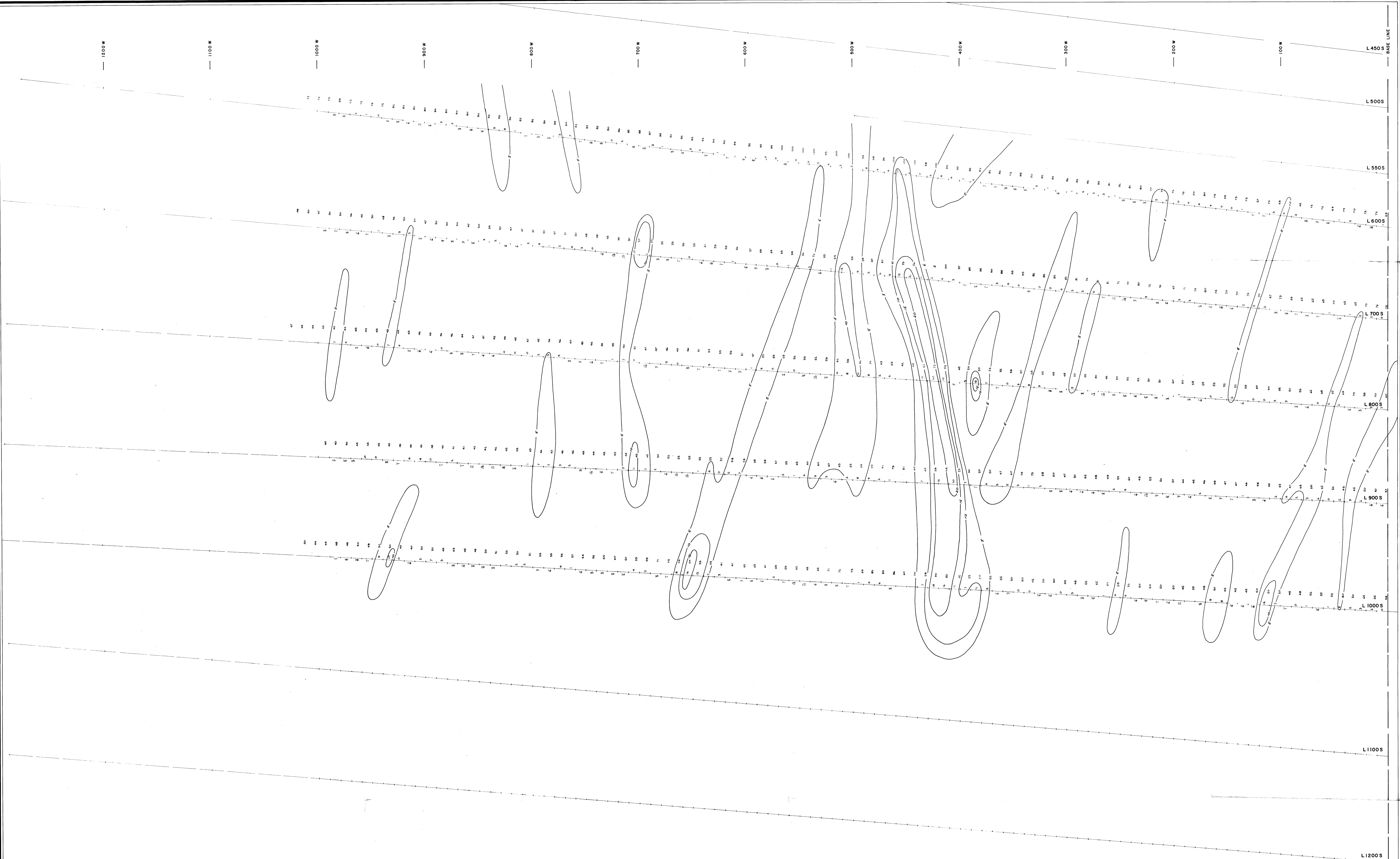
**DUPONT EXPLORATION**  
 CANADA

**BILL PROJECT**  
**VLF - EM SURVEY**  
 STIKINE RIVER AREA, BRITISH COLUMBIA

SCALE 1" = 83.3 FEET

MAPPED BY: TRUFFA, M.A. DATE: 8/10/80  
 DRAWN BY: V.L.E. DATE: 8/10/81

REVISED: DATE: 8/10/80  
 ASST. NO.: 381-00  
 DRAW. NO.: 8.03-9



**LEGEND**

- FIELD STRENGTH
- SURVEY GRID LINE WITH FRASER FILTERED DIP READINGS  
POSITIVE DEGREES ON NORTH SIDE OF LINE & NEGATIVE DEGREES ON SOUTH SIDE  
STATION USED : HAWAII
- CONTOUR INTERVAL 5°

**Part 2 of 2**

NW SHEET	NE SHEET
SW SHEET	SE SHEET

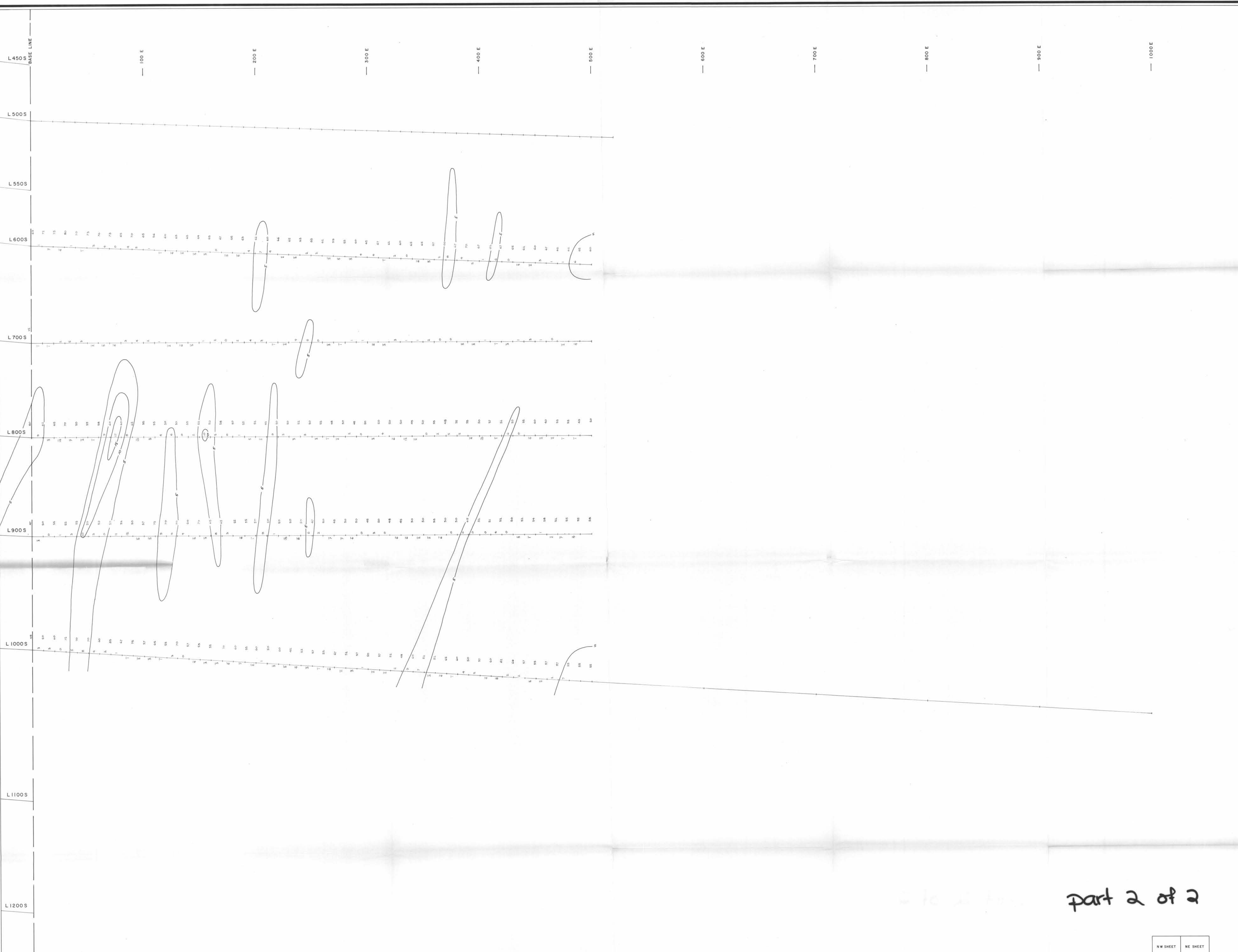
SHEET INDEX

GEOLOGICAL BRANCH  
ASSESSMENT REPORT

11,493

<b>DU PONT</b> CANADA	
<b>EXPLORATION</b>	
<b>BILL PROJECT</b>	
<b>VLF - EM SURVEY</b>	
STIKINE RIVER AREA, BRITISH COLUMBIA	
<small>DRAWN BY : R.L.C.</small> <small>DATE : 83 10 11</small>	<small>REVISOR : J.E.L.W.</small> <small>DATE : 83 10 11</small>
<small>MAPPED BY : T.O. GAGLIARDI</small> <small>DATE : 83 06 16 80</small>	<small>PROJECT NO. : 3917-00</small> <small>DWG. NO. : B.83-10</small>





**LEGEND**

- FIELD STRENGTH
- SURVEY GRID LINE WITH FRASER FILTERED DIP READINGS  
POSITIVE DEGREES ON NORTH SIDE OF LINE & NEGATIVE DEGREES ON SOUTH SIDE  
STATION USED : HAWAII
- CONTOUR INTERVAL 5°

part 2 of 2

NW SHEET	NE SHEET
SW SHEET	SE SHEET

SHEET INDEX

GEOLOGICAL BRANCH  
 ASSESSMENT REPORT  
**11,493**

**CUPON EXPLORATION**  
 KANADA

**BILL PROJECT**  
**VLF - EM SURVEY**  
 STIKINE RIVER AREA, BRITISH COLUMBIA

MAPPED BY: TOLSON, M.P.R.L. REVISED: [Signature]  
 DATE: 83-04-16-20 DRAWN BY: K.L.A. ACCT. NO.: 351-00  
 DATE: 83-05-11 DATE: 83-05-11 DWS. NO.: B.03-11





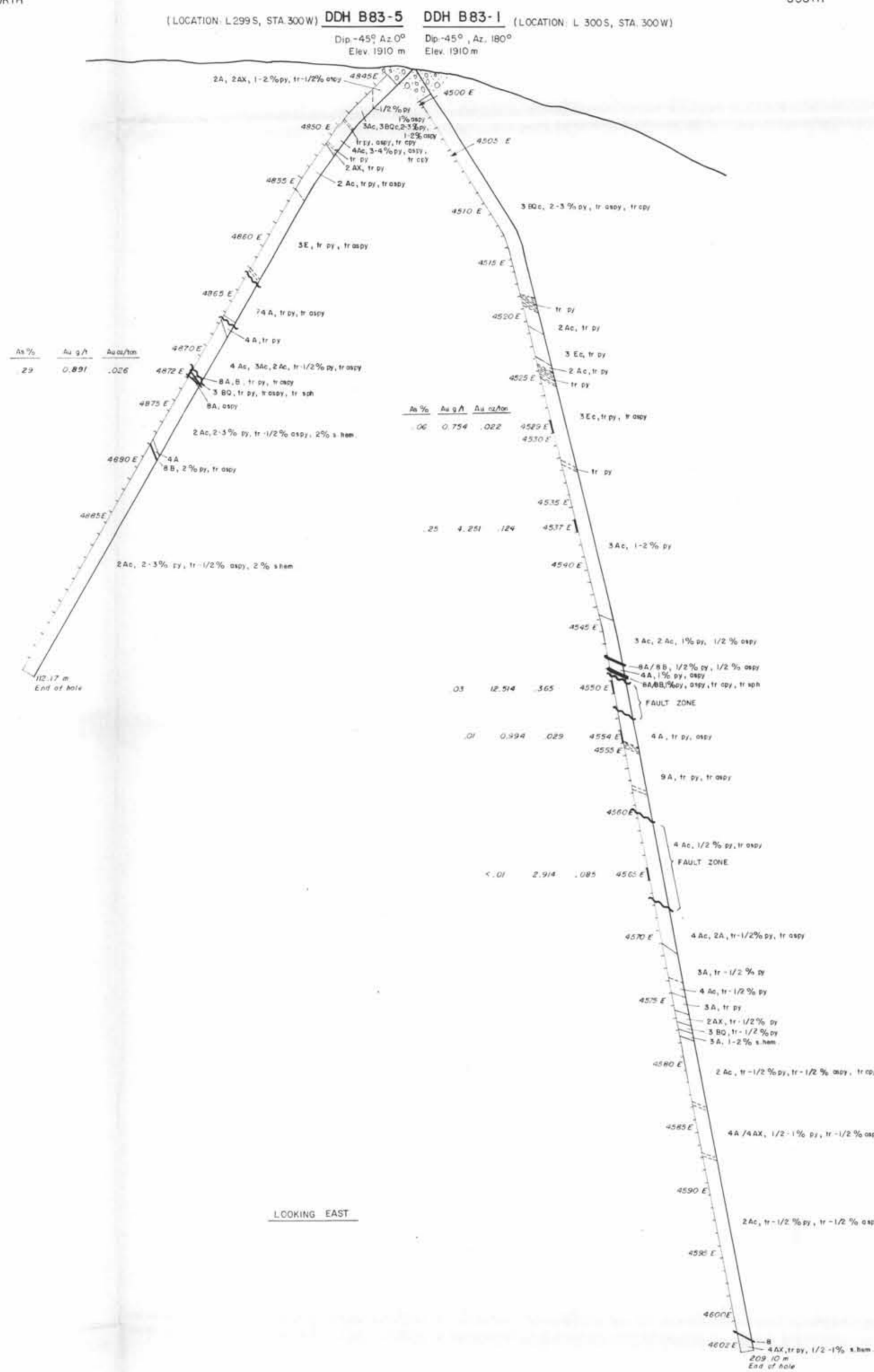
SAMPLE ASSAYS - DDH B83-5

Sample Number	As %	Au gm/tonne	Au oz/ton
4845E	0.01	0.137	0.004
46	<0.01	0.137	0.004
47	0.20	0.137	0.004
48	0.11	0.206	0.006
49	0.08	0.137	0.004
50	0.60	0.206	0.006
51	0.61	0.137	0.004
52	<0.01	0.137	0.004
53	<0.01	0.137	0.004
54	<0.01	0.137	0.004
55	<0.01	0.137	0.004
56	<0.01	0.137	0.004
57	<0.01	0.103	0.003
58	<0.01	0.103	0.003
59	<0.01	0.103	0.003
60	<0.01	0.103	0.003
61	<0.01	0.137	0.004
62	<0.01	0.103	0.003
63	<0.01	0.103	0.003
64	<0.01	0.309	0.009
65	<0.01	0.309	0.009
66	<0.01	0.206	0.006
67	<0.01	0.309	0.009
68	<0.01	0.309	0.009
69	<0.01	0.206	0.006
70	<0.01	0.206	0.006
71	<0.01	0.137	0.004
72	0.29	0.891	0.026
73	0.52	0.309	0.009
74	0.01	0.137	0.004
75	<0.01	0.137	0.004
76	0.28	0.137	0.004
77	0.28	0.103	0.003
78	0.24	0.103	0.003
79	0.05	0.103	0.003
80	0.01	0.103	0.003
81	0.02	0.137	0.004
82	0.02	0.103	0.003
83	<0.01	0.103	0.003
84	<0.01	0.103	0.003
85	<0.01	0.103	0.003
86	0.18	0.103	0.003
87	0.10	0.137	0.004
88	<0.01	0.137	0.004
89	0.32	0.137	0.004
90	0.07	0.103	0.003
91	0.20	0.103	0.003
92	0.04	0.103	0.003
93	0.07	0.137	0.004
94	0.27	0.137	0.004
95	<0.01	0.206	0.006
96	<0.01	0.103	0.003
97	<0.01	0.137	0.004
4898E	<0.01	0.137	0.004

SAMPLE ASSAYS - DDH B83-1

Sample Number	As %	Au gm/tonne	Au oz/ton	Sample Number	As %	Au gm/tonne	Au oz/ton
4500E	0.02	0.034	0.001	49	0.18	0.309	0.009
01	0.01	0.034	0.001	50	0.03	12.514	0.365
02	0.01	0.034	0.001	51	0.06	0.583	0.017
03	0.01	0.034	0.001	52	<0.01	0.206	0.006
04	<0.01	0.034	0.001	53	<0.01	0.309	0.009
05	0.02	0.034	0.001	54	0.01	0.994	0.029
06	0.02	0.034	0.001	55	0.01	0.103	0.003
07	0.09	0.034	0.001	56	<0.01	0.206	0.006
08	0.03	0.034	0.001	57	<0.01	0.411	0.012
09	<0.01	0.103	0.003	58	0.01	0.206	0.006
10	0.01	0.103	0.003	59	<0.01	0.103	0.003
11	0.01	0.034	0.001	60	0.01	0.206	0.006
12	<0.01	0.034	0.001	61	0.01	0.206	0.006
13	<0.01	0.034	0.001	62	0.01	0.309	0.009
14	0.03	0.034	0.001	63	0.01	0.206	0.006
15	0.02	0.034	0.001	64	0.01	0.137	0.004
16	0.22	0.103	0.003	65	<0.01	2.914	0.085
17	0.03	0.137	0.004	66	<0.01	0.411	0.012
18	0.01	0.137	0.004	67	<0.01	0.309	0.009
19	0.01	0.137	0.004	68	<0.01	0.103	0.003
20	<0.01	0.137	0.004	69	<0.01	0.309	0.009
21	<0.01	0.137	0.004	70	<0.01	0.103	0.003
22	<0.01	0.103	0.003	71	<0.01	0.103	0.003
23	<0.01	0.103	0.003	72	<0.01	0.137	0.004
24	<0.01	0.137	0.004	73	<0.01	0.034	0.001
25	<0.01	0.137	0.004	74	<0.01	0.342	0.010
26	<0.01	0.137	0.004	75	<0.01	0.206	0.006
27	<0.01	0.137	0.004	76	<0.01	0.206	0.006
28	<0.01	0.137	0.004	77	<0.01	0.206	0.006
29	0.06	0.754	0.022	78	<0.01	0.206	0.006
30	0.14	0.411	0.012	79	<0.01	0.240	0.007
31	<0.01	0.309	0.009	80	<0.01	0.137	0.004
32	<0.01	0.034	0.001	81	<0.01	0.411	0.012
33	<0.01	0.206	0.006	82	<0.01	0.411	0.012
34	<0.01	0.103	0.003	83	<0.01	0.137	0.004
35	<0.01	0.103	0.003	84	<0.01	0.240	0.007
36	0.04	0.206	0.006	85	<0.01	0.137	0.004
37	0.25	4.251	0.124	86	0.06	0.514	0.015
38	<0.01	0.309	0.009	87	0.46	0.206	0.006
39	<0.01	0.103	0.003	88	<0.01	0.309	0.009
40	<0.01	0.206	0.006	89	<0.01	0.103	0.003
41	<0.01	0.103	0.003	90	0.07	0.206	0.006
42	0.01	0.103	0.003	91	<0.01	0.206	0.006
43	<0.01	0.206	0.006	92	<0.01	0.206	0.006
44	<0.01	0.411	0.012	93	<0.01	0.206	0.006
45	<0.01	0.411	0.012	94	<0.01	0.103	0.003
46	<0.01	0.411	0.012	95	<0.01	0.103	0.003
47	<0.01	0.309	0.009	96	<0.01	0.103	0.003
48	0.07	0.103	0.003	97	<0.01	0.206	0.006
				98	<0.01	0.514	0.015
				4599	<0.01	0.206	0.006
				4600	<0.01	0.206	0.006
				01	<0.01	0.103	0.003
				4602E	<0.01	0.103	0.003

NORTH SOUTH



LEGEND

9	Intrusive Rocks	9A	Rhyolite-Latite dyke
		9C	Gabbro (or diabase) dyke
8	Quartz Vein	8A	Carries Aspy
		8B	Carries Py
7	Mixed Volcanic Rocks	7B	Andesite tuff, tuffite and dacite tuff, tuffite, minor chert and/or limy beds or bands.
5	Sedimentary Rocks	5B	Impure limestone contains quartzite, siltstone, sandstone and rhyolite-dacite tuffite.
		5D	Carbonaceous siltstone
4	Rhyolite	4A	Rhyolite tuff
		4AX	Rhyolite crystal tuff
		4AQ	Rhyolite, quartz eye bearing
3	Dacite	3A	Dacite tuff
		3B	Dacite feldspar crystal tuff
		3BO	Dacite crystal tuff, quartz eye bearing
		3E	Dacite tuff
2	Andesite	2A	Andesite tuff
		2AX	Andesite crystal tuff
		2E	Andesite tuff

Note: "c" following any unit designation denotes that the unit is carbonated.

Symbols	Abbreviations
Overburden	py Pyrite
Quartz vein	aspy Arsenopyrite
Gradational contact	cpy Chalcopyrite
Gradational zone	sph Sphalerite
Fault	s.hem Specular hematite
Core sample number	tr Trace

GEOLOGICAL BRANCH  
ASSESSMENT REPORT

11,493

part 2  
of 2

MAPPED BY: T.J.B. 25 F		REVISIONS:	
DATE: 83 07 06 (12/27)	ACCT No.: 361-00	DATE: 83 10 15	DRWG No.: B 83-12

**EXPLORATION**  
 CANADA  
**BILL PROJECT SECTION**  
**DDH's B83-1 & B83-5**  
 STIKINE RIVER AREA, BRITISH COLUMBIA  
 SCALE: 1" = 41.7 FEET  
 N.T.S. No.: 94 E 15 W



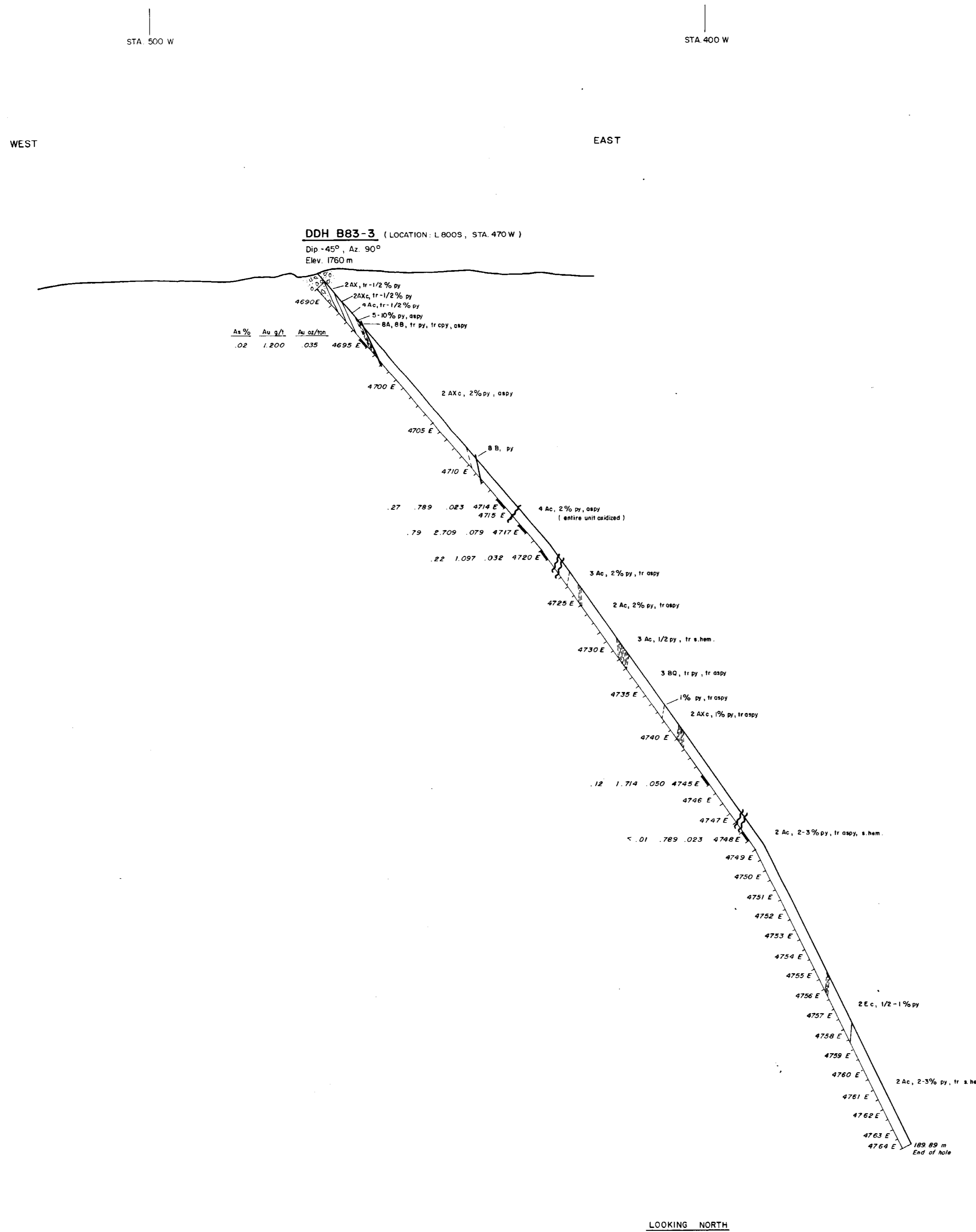


LEGEND

- |   |                      |     |   |
|---|----------------------|-----|---|
| 9 | Intrusive Rocks      | 9A  | Rhyolite-Latite dyke  |
|   |                      | 9C  | Gabbro (or diabase) dyke  |
| 6 | Quartz Vein          | 8A  | Carries Aspy  |
|   |                      | 8B  | Carries Py  |
| 7 | Mixed Volcanic Rocks | 7B  | Andesite tuff, tuffite and dacite tuff, tuffite, minor chert and/or limy beds or bands. |
| 5 | Sedimentary Rocks    | 5B  | Impure limestone contains quartzite, siltstone, sandstone and rhyolite-dacite tuffite.  |
|   |                      | 5D  | Carbonaceous siltstone  |
| 4 | Rhyolite             | 4A  | Rhyolite tuff   |
|   |                      | 4AX | Rhyolite crystal tuff   |
|   |                      | 4AQ | Rhyolite, quartz eye bearing  |
| 3 | Dacite               | 3A  | Dacite tuff   |
|   |                      | 3B  | Dacite feldspar crystal tuff  |
|   |                      | 3BQ | Dacite crystal tuff, quartz eye bearing   |
|   |                      | 3E  | Dacite tuff   |
| 2 | Andesite             | 2A  | Andesite tuff   |
|   |                      | 2AX | Andesite crystal tuff   |
|   |                      | 2E  | Andesite tuff   |

Note: "c" following any unit designation denotes that the unit is carbonated.

Symbols	Abbreviations
	py Pyrite
	aspy Arsenopyrite
	cpy Chalcopyrite
	sph Sphalerite
	s.hem Specular hematite
	tr Trace



SAMPLE ASSAYS

Sample Number	As %	Au g/t	Au oz/ton
4690E	0.02	0.514	0.015
91	<0.01	0.309	0.009
92	0.08	0.411	0.012
93	0.60	0.411	0.012
94	0.18	0.583	0.017
95	0.02	1.200	0.035
96	<0.01	0.309	0.009
97	0.24	0.309	0.009
98	0.08	0.411	0.012
99	<0.01	0.549	0.016
4700	0.15	0.309	0.009
01	<0.01	0.309	0.009
02	0.54	0.069	0.002
03	0.16	0.069	0.002
04	0.25	0.069	0.002
05	0.21	0.069	0.002
06	0.10	0.069	0.002
07	0.03	0.137	0.004
08	0.08	0.137	0.004
09	0.36	0.206	0.006
10	0.54	0.206	0.006
11	0.07	0.206	0.006
12	0.03	0.206	0.006
13	0.50	0.309	0.009
14	0.27	0.789	0.023
15	0.03	0.103	0.003
16	0.01	0.069	0.002
17	0.31	2.709	0.079
18	0.11	0.583	0.017
19	0.06	0.206	0.006
20	0.22	1.097	0.032
21	0.22	0.514	0.015
22	0.11	0.514	0.015
23	0.03	0.206	0.006
24	0.06	0.309	0.009
25	0.01	0.514	0.015
26	<0.01	0.103	0.003
27	<0.01	0.103	0.003
28	<0.01	0.206	0.006
29	<0.01	0.514	0.015
30	<0.01	0.103	0.003
31	<0.01	0.103	0.003
32	<0.01	0.103	0.003
33	<0.01	0.206	0.006
34	<0.01	0.103	0.003
35	<0.01	0.137	0.004
36	<0.01	0.137	0.004
37	<0.01	0.137	0.004
38	<0.01	0.206	0.006
39	<0.01	0.206	0.006
40	<0.01	0.274	0.008
41	<0.01	0.206	0.006
42	<0.01	0.309	0.009
43	<0.01	0.411	0.012
44	<0.01	0.240	0.007
45	0.12	1.714	0.050
46	<0.01	0.206	0.006
47	0.01	0.206	0.006
48	<0.01	0.789	0.023
49	0.01	0.137	0.004
50	<0.01	0.137	0.004
51	0.01	0.137	0.004
52	0.01	0.137	0.004
53	<0.01	0.103	0.003
54	<0.01	0.103	0.003
55	<0.01	0.137	0.004
56	<0.01	0.137	0.004
57	<0.01	0.137	0.004
58	<0.01	0.137	0.004
59	<0.01	0.137	0.004
60	<0.01	0.137	0.004
61	<0.01	0.137	0.004
62	<0.01	0.309	0.009
63	<0.01	0.103	0.003
64	<0.01	0.103	0.003

GEOLOGICAL BRANCH  
 ASSESSMENT REPORT

11,493

part 2  
 of 2

<b>QUIPON EXPLORATION</b> CANADA	
<b>BILL PROJECT</b>	
<b>SECTION DDH B83-3</b>	
STIKINE RIVER AREA, BRITISH COLUMBIA	
1:500 SCALE 1 INCH = 41.7 FEET	
MAPPED BY: T.J.D., J.R.E.	REVISED: J. J. J.
DATE: 83.07.22	ACCT. No.: 361-00
DRAWN BY: C.H.K.	DATE: 83.10.06
DRWG. No.: B.83-14	



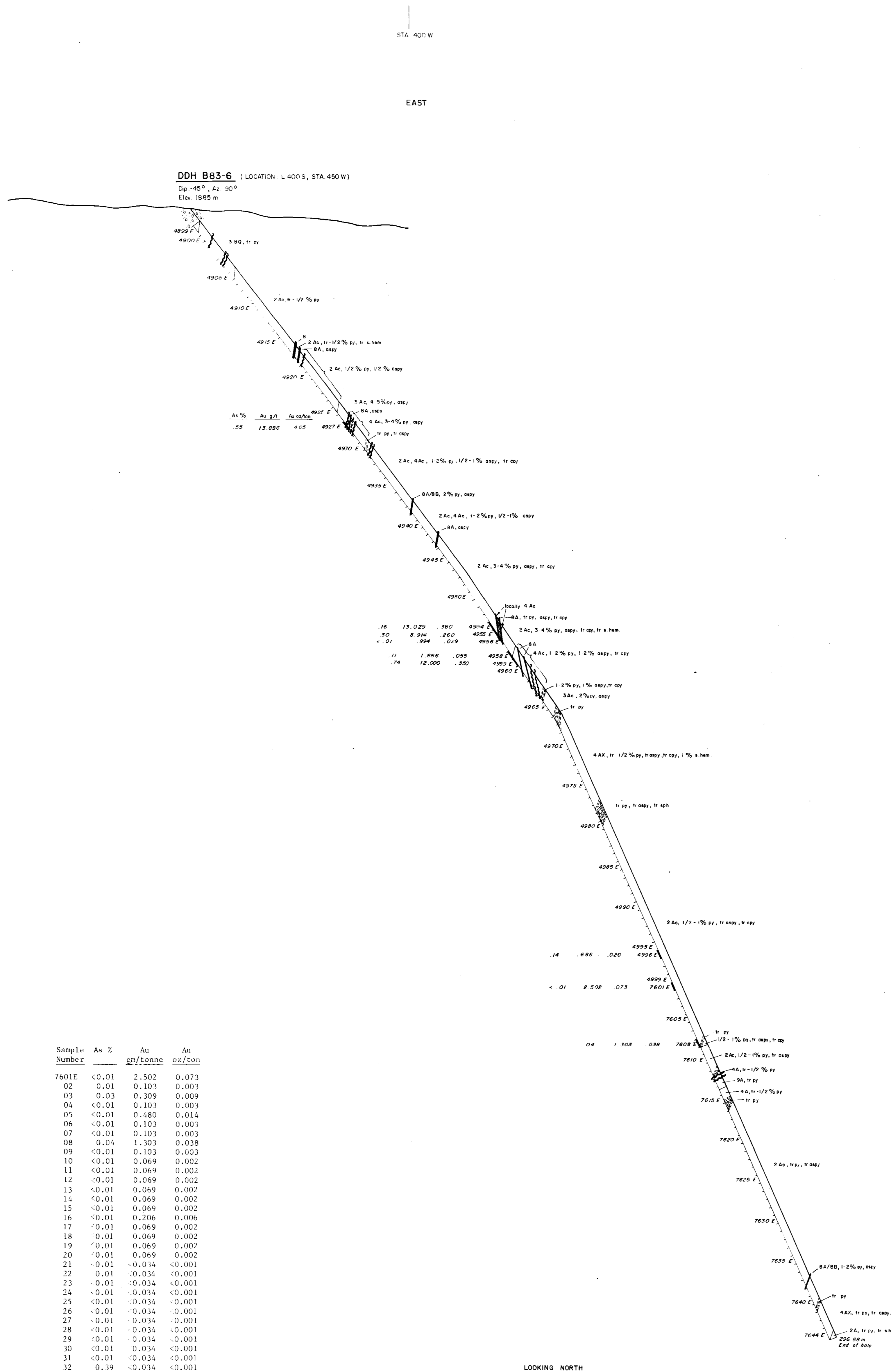


LEGEND

- |   |                      |     |   |
|---|----------------------|-----|---|
| 9 | Intrusive Rocks      | 9A  | Rhyolite-Latite dyke  |
|   |                      | 9C  | Gabbro (or diabase) dyke  |
| 8 | Quartz Vein          | 8A  | Carries Aspy  |
|   |                      | 8B  | Carries Py  |
| 7 | Mixed Volcanic Rocks | 7B  | Andesite tuff, tuffite and dacite tuff, tuffite, minor chert and/or limy beds or bands. |
| 5 | Sedimentary Rocks    | 5B  | Impure limestone contains quartzite, siltstone, sandstone and rhyolite-dacite tuffite.  |
|   |                      | 5D  | Carbonaceous siltstone  |
| 1 | Rhyolite             | 4A  | Rhyolite tuff   |
|   |                      | 4AX | Rhyolite crystal tuff   |
|   |                      | 4AQ | Rhyolite, quartz eye bearing  |
| 3 | Dacite               | 3A  | Dacite tuff   |
|   |                      | 3B  | Dacite feldspar crystal tuff  |
|   |                      | 3BQ | Dacite crystal tuff, quartz eye bearing   |
|   |                      | 3E  | Dacite tuff   |
| 2 | Andesite             | 2A  | Andesite tuff   |
|   |                      | 2AX | Andesite crystal tuff   |
|   |                      | 2E  | Andesite tuff   |

Note: "c" following any unit designation denotes that the unit is carbonated.

Symbols	Abbreviations
	py Pyrite
	aspy Arsenopyrite
	cpy Chalcopyrite
	sph Sphalerite
	s.hem Specular hematite
	tr Trace



SAMPLE ASSAYS

Sample Number	As %	Au g/t	Au g/tonne	Au oz/ton
4899E	0.01	<0.034	<0.001	
4900	0.04	<0.034	<0.001	
01	0.05	<0.034	<0.001	
02	0.03	<0.034	<0.001	
03	0.01	<0.034	<0.001	
04	0.02	<0.034	<0.001	
05	0.01	<0.034	<0.001	
06	<0.01	<0.034	<0.001	
07	<0.01	<0.034	<0.001	
08	<0.01	<0.034	<0.001	
09	<0.01	<0.034	<0.001	
10	<0.01	<0.034	<0.001	
11	<0.01	<0.034	<0.001	
12	<0.01	<0.034	<0.001	
13	0.07	<0.034	<0.001	
14	0.01	<0.034	<0.001	
15	0.01	<0.034	<0.001	
16	<0.01	<0.034	<0.001	
17	0.47	<0.034	<0.001	
18	<0.01	<0.034	<0.001	
19	<0.01	<0.034	<0.001	
20	<0.01	0.206	0.006	
21	<0.01	0.206	0.006	
22	0.16	0.069	0.002	
23	0.28	0.309	0.009	
24	0.26	0.137	0.004	
25	0.29	0.137	0.004	
26	0.16	0.137	0.004	
27	0.55	13.886	0.405	
28	0.04	<0.034	<0.001	
29	<0.01	<0.034	<0.001	
30	0.03	<0.034	<0.001	
31	0.01	<0.034	<0.001	
32	0.02	<0.034	<0.001	
33	0.02	<0.034	<0.001	
34	0.34	<0.034	<0.001	
35	0.37	<0.034	<0.001	
36	0.66	<0.034	<0.001	
37	0.14	<0.034	<0.001	
38	0.15	<0.034	<0.001	
39	0.09	0.206	0.006	
40	0.25	<0.034	<0.001	
41	0.28	<0.034	<0.001	
42	0.48	<0.034	<0.001	
43	0.09	<0.034	<0.001	
44	0.11	0.480	0.014	
45	0.17	0.103	0.003	
46	0.08	0.103	0.003	
47	0.35	0.103	0.003	
48	0.81	0.480	0.014	
49	0.37	0.103	0.003	
50	0.35	0.103	0.003	
51	0.60	0.206	0.006	
52	0.16	0.137	0.004	
53	0.31	0.137	0.004	
54	0.16	13.029	0.380	
55	0.30	8.914	0.260	
56	<0.01	0.994	0.029	
57	<0.01	0.103	0.003	
58	0.11	1.886	0.055	
59	0.74	12.000	0.350	
60	1.12	0.137	0.004	
61	<0.01	<0.034	<0.001	
62	0.01	<0.034	<0.001	
63	0.09	<0.034	<0.001	
64	0.30	<0.034	<0.001	
65	<0.01	<0.034	<0.001	
66	<0.01	<0.034	<0.001	
67	0.01	<0.034	<0.001	
68	<0.01	<0.034	<0.001	
69	<0.01	<0.034	<0.001	
70	<0.01	<0.034	<0.001	
71	<0.01	<0.034	<0.001	
72	<0.01	<0.034	<0.001	
73	<0.01	<0.034	<0.001	
74	<0.01	<0.034	<0.001	
75	<0.01	<0.034	<0.001	
76	0.01	<0.034	<0.001	
77	<0.01	<0.034	<0.001	
78	<0.01	<0.034	<0.001	
79	<0.01	<0.034	<0.001	
80	<0.01	<0.034	<0.001	
81	<0.01	<0.034	<0.001	
82	0.17	<0.034	<0.001	
83	0.01	<0.034	<0.001	
84	0.01	<0.034	<0.001	
85	<0.01	<0.034	<0.001	
86	<0.01	<0.034	<0.001	
87	0.50	0.377	0.011	
88	0.48	0.240	0.007	
89	0.06	0.206	0.006	
90	<0.01	0.069	0.002	
91	<0.01	0.069	0.002	
92	0.03	0.069	0.002	
93	0.01	0.069	0.002	
94	0.09	0.103	0.003	
95	<0.01	0.103	0.003	
96	0.14	0.886	0.029	
97	<0.01	0.069	0.002	
98	<0.01	0.069	0.002	
99	0.02	0.069	0.002	

Sample Number	As %	Au g/t	Au g/tonne	Au oz/ton
7601E	<0.01	2.502	0.073	
02	0.01	0.103	0.003	
03	0.03	0.309	0.009	
04	<0.01	0.103	0.003	
05	<0.01	0.480	0.014	
06	<0.01	0.103	0.003	
07	<0.01	0.103	0.003	
08	0.04	1.303	0.038	
09	<0.01	0.103	0.003	
10	<0.01	0.069	0.002	
11	<0.01	0.069	0.002	
12	<0.01	0.069	0.002	
13	<0.01	0.069	0.002	
14	<0.01	0.069	0.002	
15	<0.01	0.069	0.002	
16	<0.01	0.206	0.006	
17	<0.01	0.069	0.002	
18	<0.01	0.069	0.002	
19	<0.01	0.069	0.002	
20	<0.01	0.069	0.002	
21	<0.01	<0.034	<0.001	
22	0.01	<0.034	<0.001	
23	<0.01	<0.034	<0.001	
24	<0.01	<0.034	<0.001	
25	<0.01	<0.034	<0.001	
26	<0.01	<0.034	<0.001	
27	<0.01	0.069	0.002	
28	<0.01	<0.034	<0.001	
29	0.01	<0.034	<0.001	
30	<0.01	0.034	<0.001	
31	<0.01	<0.034	<0.001	
32	0.39	<0.034	<0.001	
33	0.02	<0.034	<0.001	
34	0.01	<0.034	<0.001	
35	<0.01	<0.034	<0.001	
36	0.07	<0.034	<0.001	
37	0.16	<0.034	<0.001	
38	0.07	<0.034	<0.001	
39	<0.01	<0.034	<0.001	
40	0.01	<0.034	<0.001	
41	<0.01	<0.034	<0.001	
42	<0.01	<0.034	<0.001	
43	<0.01	<0.034	<0.001	
7644E	<0.01	<0.034	<0.001	

GEOLOGICAL BRANCH  
ASSESSMENT REPORT

11,493

Part 2  
of 2

COUPON EXPLORATION  
CANADA

BILL PROJECT  
SECTION DDH B83-6  
STIKINE RIVER AREA, BRITISH COLUMBIA

SCALE	
0	100
0	1 INCH = 41.7 FEET
MAPPED BY: T.D. J.B.F.	
DATE: 830228-0801	REVISED:
DRAWN BY: C.M.K.	ACCT No.: 361-00
DATE: 83.10.12.	DRWG. No.: B.83-16