

ROUCHER DEBOULE PROPERTY  
VICTORIA GROUP  
NTS 93M/4E 10  
OMINECA M.D.  
D. GROOT LOGGING LTD.  
MINERALS EXPLORATION  
SMITHERS, B.C.

D.C. PLEASH - GEOLOGIST

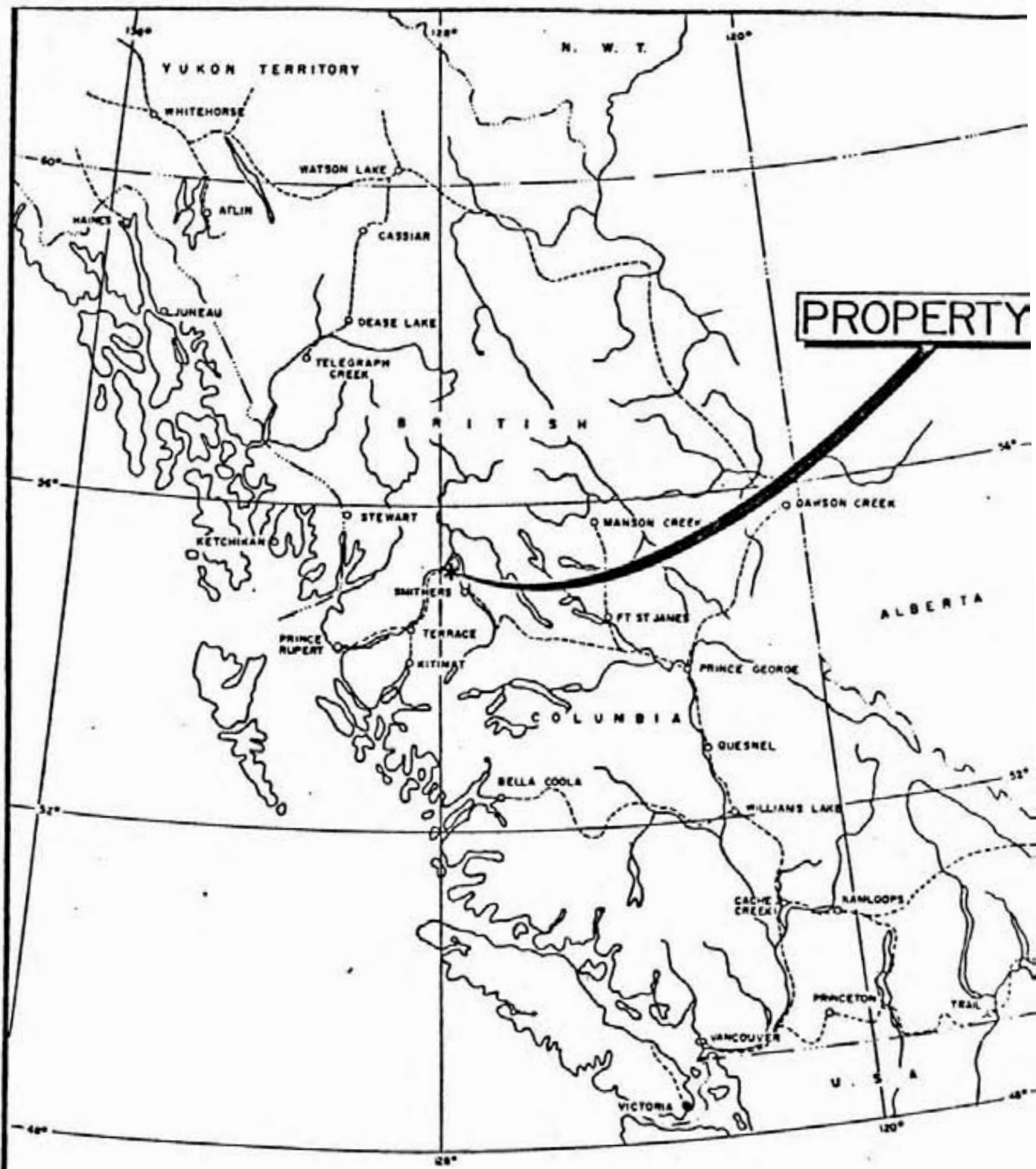
NOVEMBER 1983

**GEOLOGICAL BRANCH  
ASSESSMENT REPORT**

**11,513**

TABLE OF CONTENTS

	<u>PAGE</u>
Introduction	1
Conclusion	2
Location and Access	3
Claim List	4-5
History	6
Geology - Regional	7
Geology - Local	8-9
References	10
1983 Diamond Drill Program	11-13
Diamond Drill Logs	Rear Pages
Qualifications	14
Figures	
(1) Index Map	Front Page
(2) Property Map	2nd Page
(3) Roucher Deboule Property and Environs	In Pocket
(4) Victoria No. 2 1983 Diamond Drill Program	In Pocket
Appendices	
Appendix 'A'	Cost Statement
Appendix 'B'	Cost Breakdown
Appendix 'C'	Certificate of Assay
Appendix 'D'	Assay Invoices
Appendix 'E'	J.T. Thomas Invoice

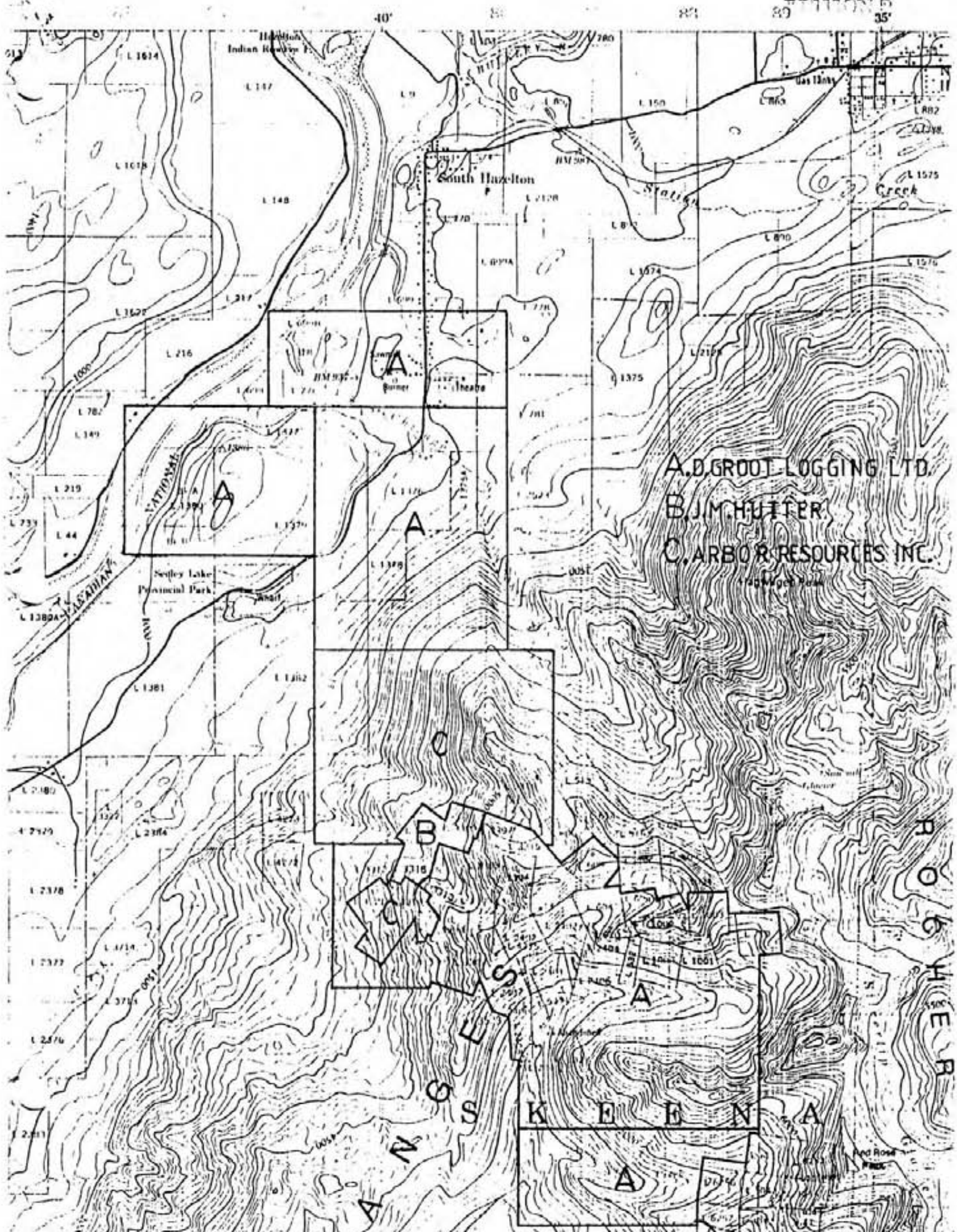


# INDEX MAP

BRITISH COLUMBIA

100 KM.

FIG. 1



A. D. GROOT LOGGING LTD.  
 B. J. M. HUTTER  
 C. ARBOR RESOURCES INC.

R O G E R S H E R

A N G S K E N N A

VICTORIA, ROUCHER DEBOULE & ARMAGOSA GROUPS

ROUCHER DEBOULE MOUNTAINS

HAZELTON, B.C.

INTRODUCTION:

The Victoria, Roucher Deboule and Armagosa properties comprise a contiguous group of reverted crown grants and mineral claims located on the western flank of Roucher Deboule Mountain of Hazelton, B.C.

Numerous mineralized veins are known to occur on the property, from the Scheelite veins in the Armagosa Creek area adjacent to Cominco's Red Rose property, to the Roucher Deboule mine area and thence to the Victoria area.

This report deals with the Victoria No. 2 vein which was diamond drilled, in part, this season.

CONCLUSION:

The diamond drilling on the Victoria No. 2 vein showed that the Feldspar Porphyry structure does exist at lower elevations. Through the interpretation of the diamond drill logs, the structure still seems to strike east - west at depth but the dip appears to be a little flatter than what shows on the surface. The dip averages out to a minus 56° in both of the deeper diamond drill holes.

Diamond drill hole V83-1A intersected the Feldspar Porphyry at one hundred and thirty metres below surface at elevation 1796 metres. Diamond drill hole V83-2 intersected the Feldspar Porphyry at sixty one metres below surface at elevation 1733 metres. Neither of these two diamond drill holes had any Gold in them throughout the Feldspar Porphyry zone as did appear in the structure on surface.

In studying the other veins on the property between the Victoria No. 1 vein structure and over to the veins in the Armagosa Creek area, the mineral occurrences appear to be in pods or lens' and not in a uniform continuous structure of any length. If this theory is correct then a diamond drill program of closely spaced holes would have to be implemented to pick up any metal occurrences.



D.C. Pécash  
GEOLOGIST

LOCATION AND ACCESS:

The area of interest being that of the Victoria Group is 11 km. south of the settlement of South Hazelton, B.C. on which the often very steep western slope of the Roucher Déboule Range at about 1220m. above sea level to about 1950m above sea level.

Access to the Victoria Group is via a steep narrow bush road that branches off Comeau Ranch Road and traverses up the mountain side for a distance of 8.0 km.

<u>NAME OF CLAIM</u>	<u>LOT #</u>	<u>RECORD #</u>	<u>RECORDING DATE</u>	<u>EXPIRY DATE</u>
Hazelton View	3299	401	August 1976	August 25, 1993
Lead Pick	3300	402	"	"
Moose	3301	403	"	"
Elk	3302	404	"	"
Delta Fraction	604	455	October 1976	October 26, 1993
Joe Fraction	533	456	"	"
Juniper	2400	457	"	"
Balsam	2401	458	"	"
Jack Pine	2402	459	"	"
Timber Line	4203	460	"	"
Iowa	2404	461	"	"
Log Cabin	2405	462	"	"
Balsam Fraction	2406	463	"	"
Pie Fraction	2407	464	"	"
Third Fraction	2408	465	"	"
Victoria	3303	466	"	"
Belle	3304	467	"	"
View Fraction	3305	468	"	"
Belle Fraction	3306	469	"	"
Mammoth	3307	470	"	"
Tiger	3308	471	"	"
Bowl Fraction	3315	472	"	"
Summit	605	555	April 1977	April 5, 1993
Great Ohio	702	556	"	"
Pilot	704	557	"	"
Summit Fraction	1318	582	"	April 6, 1993



<u>NAME OF CLAIM</u>	<u>LOT #</u>	<u>RECORD #</u>	<u>RECORDING DATE</u>	<u>EXPIRY DATE</u>
Waterfall Fraction	-	583	April 1977	April 22, 1993
Coral Queen	532	616	June 1977	June 21, 1993
Lucky Jack	603	617	"	"
Islander	710	618	"	"
Golden Fleece	1001	619	"	"
Happy Jack	1003	620	"	"
Zig Zag Fraction	1005	621	"	"
Balmoral	1002	622	"	"
Highland Boy	1000	623	"	"
Independance Fraction	4275	687	July 1977	July 25, 1993
Red Cross	3310	1372	Sept 1977	Sept 13, 1993
Balmoral Fraction		4413	July 1982	July 1993
Leo 1-20	-	3110	August 1980	August 1993
Star 1-10	-	3986	August 1981	August 7, 1993
July 1-6	-	3987	August 1981	August 7, 1993

## HISTORY:

The Victoria property was apparently discovered in the same year as the Roucher Deboule property. Most of the work was done on the No. 1 vein, which had hand sorted ore shipped over the period of years from 1918 to 1941. Total production from the Victoria No. 1 vein was 90 tons grading 3.62 oz. Au.; 0.3 oz. Ag.; 24.76% As.; 20.00% Mo.; and 2.73% Co.

The No. 2 vein had only a few cuts put on it. This was probably due to the fact that accessibility to the area was very limited, because the area is characterized by precipitous slopes that are regularly swept by snow slides during the winter and by avalanches after heavy snow falls and during the spring melt.

In 1982 a considerable amount of time was spent on the property in prospecting, sampling and studying the structure and lithology of the rocks.

Two diamond drill holes were drilled on the higher elevations of the property in 1983.

## GEOLOGY - REGIONAL:

The Roucher Deboule Range lies within the Intermountain Belt of the Western Cordillera and forms a segment of the Hazelton Mountains. The passively emplaced Roucher Deboule stocks forms the mountain core and is surrounded on all sides by predominantly Skeena Group volcanics and sediments. Three minor N-S striking faults cut both the stock and the surrounding strata.

The stock is composed primarily of Porphyritic Granodiorite with a younger Quartz Monzonite phase.

Mineralization in the mountain range consists, for the most part, of fissure veins and shear zone replacements although a Moly Porphyry is being explored at the south end of the range.

Structurally the veins are relatively simple, striking generally east - west and dipping north on the western flank of the stock and north - south with a westerly dip on the eastern flank.

Mineralogically the veins are complex with several phases of mineralization documented.

## GEOLOGY - LOCAL:

Eight major east - west striking north dipping veins spaced approximately 300 m. apart occur on the Victoria and Roucher Deboule property. The veins are predominantly developed within the Roucher Deboule stock but have been traced westerly into the intruded volcanics and sediments.

The progress of events resulting in the formation of veins appear to be as follows:

- Intrusion and cooling of the Roucher Deboule stock.
- Intrusion and cooling of north - east trending Quartz Monzonite dykes.
- Fracturing along present vein channels.
- Intrusion of acid to intermediate Porphyritic dykes along Victoria's No. 1 and No. 2 and Roucher Deboule No. 3 vein fractures.
- Renewed movement along the veins and introduction of Horneblende - Quartz - Feldspar Pegmatites together with Scheelite, Molybdenite and Uraninite.
- Further shearing along the veins and shattering of the Victoria No. 2 dyke followed by the introduction of Chalcopyrite, a tin metal? and glassy Quartz or Arsenopyrite, Safflorite, Cobaltite, Glaucodot, Pyrrhotite and Gold. (Victoria and to a lesser extent Roucher Deboule.)
- Renewed movement and the local introduction of Tetrahedrite, Sphalerite, Galena and Pyrite (Victoria No. 3?)
- Faulting along north north-west and north north-east axes and the intrusion of fine grained Diorite dykes.

In spite of the number of periods of movement that have apparently taken place, offsets are generally less than 30 m. and more typically less than 5 m.

Victoria No. 2 vein consists of a Feldspar Porphyry dyke, that, throughout its known length has been fractured and sheared. Subsequent hydrothermal activity has resulted in the introduction of Horneblende - Feldspar Pegmatites, Quartz and Sulphides as fracture fillings and as replacements.

This system has been traced from the 1460 m. elevation which is 180 m west of the Granodiorite - volcanic contact that is at the 1570 m. elevation, then eastward for 380 m. to the shovel cut at 1827 m. elevation. From the shovel cut the vein continues eastward for 137 m. where it crosses the ridge into a boulder field at the 1900 m. elevation. The vein was located 238 m. across the boulder field at the 1879 m. elevation and then followed for another 60 m. to the 1865 m. elevation.

The western two thirds of the known vein - dyke system is presently not exposed, except for intermediate shears of Quartz with Arsenopyrite and Cobaltite on the south wall of the avalanche chute which occupies the trace of the system in this area. The wall and Quartz - Sulphide shears both strike almost due east and dip 50° to 60° to the north. The outcrops which previously showed the northern contact of the dyke and the old pits on the western end of the footwall vein were buried by a landslide in the fall

of 1978.

Sharply angular blocks of mineralized Horneblende Pegmatite within the avalanche debris in the chute affirm to the presence of the system beneath the Detritus. A 0.5 m. sample across the face of one block assayed 23.32g/T and 62.8 g./T. As.

The full width of the vein dyke system is only exposed at the top of the above mentioned avalanche chute where the system crosses a small ridge or spine into the next chute (shovel cut area). Here the heaviest mineralization (Victoria No. 2 vein) is on the dyke hanging wall and consists of shears and lens' of Arsenopyrite and Cobaltite with some Horneblende and Quartz along the sheared dyke stock contact. The shearing and mineralization both strike at 90° to 95° and dip 50° to 60° north. Subsidiary mineralized veins of fractured and sheared Porphyry and Horneblende Pegmatite striking ±125° and dipping 60° splay off of the hanging wall vein into the Porphyry dyke. The Porphyry itself is also fractured with thin films and veinlets of Arsenopyrite filling the fractures where it has not yet been weathered out.

Between the new cut which is 8 m. east of the shovel cut and the top of the ridge the vein dyke system is predominantly masked by a thin veneer of Granite boulders in an avalanche chute. Several of the old pits shown on Mr. Jaspers map are partially visible but are filled with boulders.

Near the top of the steep slope where the mineralized system crosses the mountain ridge on the south wall of a boulder filled saddle the hanging wall mineralization appears to split with a branch following the contact and the other splaying north into the Granodiorite.

Further to the east on the eastern side of the large boulder field the vein dyke system was observed on the steep sloping south wall of a ridge that slopes down toward the Juniper Creek area. A large amount of Horneblende up to 1.4 m. thick was observed along the hanging wall of the vein dyke system but did not carry any amount of mineralization. The vein dyke system seems to have more Iron Pyrite as it progresses eastward as the rocks are fairly well stained from oxidization

Around the shovel cut area and eastward where the vein dyke system structure has increased in width to about 2 times the normal width, a slight folding of the vein dyke system must have occurred to give a minor synclinal through. The theory was postulated from detailed studies of the area.

REFERENCES:


J.S. Stevenson, 1949 pp 82-93; E.D. Kindle, 1954 pp 84-89; A. Sutherland Brown, 1960, Bull 43; Minister of Mines, B.C. Ann. Repts. 1916 pp 114-115, 1917 pp 103-104, 1918 pp 112-113, 1925 pp 134, 1927 pp 132-133, 1928 pp 140, 1940 pp 76, 1941 pp 41, 1948 pp 80-82, 1950 pp 99; J.J. O'Neill 1919 pp 20-23; M.W. Jasper M.E. 1951, 1952, 1953 Reports; G. Ford 1979 Report; D.C. Plecash 1981, 1982 Reports.

BRITISH COLUMBIA  
OMINECA M.D. 93M/4E  
ROUCHER DEBOULE PROPERTY  
VICTORIA GROUP

Between August 15th, 1983 and October 15th, 1983, D. Groot Logging Ltd. of Smithers, B.C. did work on the Victoria Group, that comprised of contracting out a diamond drill program on the Victoria No. 2 vein. Due to the precipitous slopes, unstable talus and inclement weather, the diamond drill program was not completed.

Two diamond drill holes were completed. The first one was on top of the ridge at 1926.0 m. elevation. The other diamond drill hole was collared 171.0 m. west of the first hole and at an elevation of 1794.0 m. Both of these diamond drill holes were put in to intersect the Feldspar Porphyry dyke at a lower elevation and to try and pick up the mineral occurrences that are found on the surface exposures.

Three additional diamond drill holes were needed to be drilled at the 1794.0 m. elevation to complete the program, and to determine if a possible ore occurrence of any size does exist.

  
D.C. Plecash  
GEOLOGIST

## 1983 DIAMOND DRILL PROGRAM:

Between August 15th, 1983 and October 15th, 1983, a diamond drill program was initiated on the Victoria No. 2 vein area. Three diamond drill sites were laid out and diamond drill platforms were then constructed. All of the work was totally supported by a helicopter.

Diamond drill hole V83-1 was collared at the 1926.0 metre elevation and 78.0 metres due north of the hanging wall contact of the Feldspar Porphyry. The diamond drill hole had a dip of  $-90^{\circ}$ . The purpose of this diamond drill hole was to intersect the Feldspar Porphyry at depth and to see if the Gold content did continue also at depth. This diamond drill hole went to a depth of 46.02 metres and was abandoned due to poor ground conditions. The first 0 to 3.66 metres of the drill hole was in overburden, then went into a medium to light grey Granodiorite. Between 32.46 metres and 45.57 metres there were some small bands of Feldspar Porphyry, Hornblende and Quartz. This diamond drill hole has a considerable amount of broken ground and vug hole with core loss or missing up to 37% in the first 29.57 metres


Diamond drill hole V83-1A was collared from the same setup as diamond drill hole V83-1. This hole was drilled on a  $180^{\circ}$  azimuth with a  $-85^{\circ}$  dip. The purpose of the drill hole was the same as diamond drill hole V83-1 i.e., to pick up the Feldspar Porphyry and Gold occurrence at depth. The first 0 to 4.75 metres of the diamond drill hole was in overburden, then into a medium to light grey Granodiorite. From 26.76 metres to 54.80 metres there are numerous bands of Feldspar Porphyry, Hornblende and Quartz stringers. On each side of any of the above intrusions there is always at least 1 cm. of leached ground. The main Feldspar Porphyry Dyke is between 130.46 metres to 142.34 metres with very little Quartz, Hornblende and Arsenopyrite appearing. From 144.17 metres to 151.79 metres there is again numerous bands of Feldspar Porphyry, Hornblende and Quartz bands with same leaching appearing on each side of the intrusions. The hole went through a fault zone with recemented ground between 203.46 metres to 203.88 metres. The diamond drill hole ended at 213.97 metres in a medium grey Granodiorite.

Diamond drill hole V83-2 was drilled on a  $126^{\circ}$  azimuth with a  $-73^{\circ}$  dip. This hole was collared at the 1794.4 metres elevation. The purpose of this diamond drill hole was to intersect the structure of the so called shovel cut at depth. The shovel cut area is one of greater width of Feldspar Porphyry and also a zone of more Gold, Cobalt and Arsenopyrite occurrences. The first 0 to 5.18 metres were in overburden then into a medium grey Granodiorite. Between 5.18 metres to 44.81 metres there is a 34% core loss. At 19.81 metres to 24.69 metres and 38.41 metres to 46.94 metres the Granodiorite has a darker brownish hue in the ground mass. The diamond drill hole went into a mixed zone of Feldspar Porphyry, Granodiorite and Quartz bands between 60.11 metres to 61.45 metres and then into the main Feldspar Porphyry zone between 63.07 metres to 81.08 metres. In the main Feldspar Porphyry zone there is a faulted area at 72.85 metres to 73.15 metres and at 80.62 meters. No significant amount of mineralization was located in the main Feldspar Porphyry zone. From 81.08 meters to 88.39 meters and from 94.06 meters to 103.45 meters the drill hole intersected a zone of mixed Feldspar Porphyry, Granodiorite and Quartz bands with leaching of the Granodiorite on each side of the intrusions. The diamond drill hole ended at 125.27 meters in a medium



grey Granodiorite.

Diamond drill core stored at D. Groot Logging Ltd., Tatlow Road, Smithers,  
B.C.

  
D.C. Plecash  
GEOLOGIST

## STATEMENT OF QUALIFICATIONS

I, Donald C. Plecash, of 3869 - 12 Avenue, Box 2694, Smithers, B.C. Certify that:

- 1) I attended Queens University, Kingston, Ontario from September 1947 to May 1950.
- 2) I was employed by Yale Lead & Zinc Mines of Ainsworth, B.C. as a Mine Surveyor, Junior Engineer and Junior Geologist from 1950 to 1956.
- 3) I was employed by Canam Copper Mines Ltd. of Hope, B.C. as a Mine Engineer and Mine Geologist from 1956 to 1957.
- 4) I was employed by Reeves MacDonald Mines Ltd. of Remac, B.C. as a Mine Engineer and Mine and Exploration Geologist from 1957 to 1969.
- 5) I was employed by Norex Uranium Ltd. of 605-535 Thurlow Street, Vancouver, B.C. as Exploration Manager and Geologist from June 1969 to October 1969.
- 6) I was employed by Nadina Explorations Ltd. of 1005-789 West Pender Street, Vancouver, B.C. as Mine Engineer and Mine Geologist then Mine Manager from November 1969 to September 1973.
- 7) I was employed from September 1973 to April 1980 in another industry.
- 8) I am employed by D. Groot Logging Ltd. of Box 520, Smithers, B.C. as a Geologist from May 1980 to present time.



ROUCHER DEBOULE

VICTORIA GROUP

COST STATEMENT

1983

Diamond Drilling - J.T. Thomas Invoice

Field Supervision

Logging & Splitting Core

Maps & Report

Assaying & Freight

---

\$ 73,433.62




D.C. Plecash  
GEOLOGIST

COST BREAKDOWN

J.T. Thomas - Invoice

1264.0' @ \$49.00/ft	<u>\$61,936.00</u>	\$61,936.00
<u>Field Supervision</u>		
D.C. Plecash 29 days @ \$210.57/day (includes fringe benefits @ 22.83%)	\$ 6,165.53	
4X4 Use 29 days @ \$ 35.00/day	\$ 1,015.00	
Fuel & Lubes	<u>\$ 472.50</u>	\$ 7,653.03
<u>Logging &amp; Splitting Core</u>		
7 days @ \$210.57/day	<u>\$ 1,473.99</u>	\$ 1,473.99
<u>Maps &amp; Report</u>		
5 days @ \$210.57/day	\$ 1,052.85	
Typing, Blueprinting, Copying Etc.	Est. \$ 250.00	\$ 1,302.85
<u>Assaying &amp; Freight Charges</u>	<u>\$ 1,067.75</u>	<u>\$ 1,067.75</u>
		<u><u>\$73,433.62</u></u>

All work done on the Belle M.C. R.#467

  
D.C. Plecash  
GEOLOGIST



# CHEMEX LABS LTD.

212 BROOKSBANK AVE.  
NORTH VANCOUVER, B.C.  
CANADA V7J 2C1

• ANALYTICAL CHEMISTS

• GEOCHEMISTS

• REGISTERED ASSAYERS

TELEPHONE: (604) 984-0221  
TELEX: 043-52597

## CERTIFICATE OF ASSAY

TO : GROOT D., LOGGING LIMITED  
MINERAL EXPLORATION DIVISION  
ATTN: BUD PLEKASH  
BOX 520  
SMITHERS, B.C. V0J 2N0

CERT. # : A8315176-001-A  
INVOICE # : I8315176  
DATE : 7-CCT-83  
P.O. # : NONE

ATTN: B. PLEKASH

Sample description	Prep code	Co %	Ag FA oz/T	Au FA oz/T			
✓ VB3-1 3355	207	<0.001	0.46	<0.003	--	--	--
✓ 3356	207	<0.001	0.12	<0.003	--	--	--
✓ 3357	207	<0.001	0.04	0.006	--	--	--
✓ VB3-1A 3358	207	<0.001	0.02	<0.003	--	--	--
✓ 3359	207	<0.001	0.02	<0.003	--	--	--
✓ 3360	207	<0.001	0.02	<0.003	--	--	--
✓ 3361	207	<0.001	0.10	<0.003	--	--	--
✓ 3362	207	0.015	0.08	0.010	--	--	--
✓ 3363	207	<0.001	0.04	0.008	--	--	--
✓ 3364	207	<0.001	0.06	<0.003	--	--	--
✓ 3365	207	<0.001	0.20	0.003	--	--	--
✓ 3366	207	<0.001	0.12	<0.003	--	--	--
✓ 3367	207	<0.001	0.12	<0.003	--	--	--
✓ 3368	207	<0.001	0.02	<0.003	--	--	--
✓ 3369	207	<0.001	0.04	<0.003	--	--	--
✓ 3370	207	<0.001	0.12	<0.003	--	--	--
✓ 3371	207	<0.001	0.04	<0.003	--	--	--
✓ 3372	207	<0.001	0.10	<0.003	--	--	--
✓ 3373	207	<0.001	0.02	<0.003	--	--	--
✓ 3374	207	<0.001	0.04	<0.003	--	--	--
✓ 3375	207	<0.001	0.02	<0.003	--	--	--
✓ 3376	207	<0.001	0.04	<0.003	--	--	--
✓ 3377	207	0.001	0.04	<0.003	--	--	--
✓ 3378	207	<0.001	0.08	<0.003	--	--	--
✓ 3379	207	<0.001	0.06	0.003	--	--	--
✓ 3380	207	<0.001	0.04	<0.003	--	--	--
✓ 3381	207	<0.001	0.06	0.003	--	--	--

.....  
Registered Assayer, Province of British Columbia



MEMBER  
CANADIAN TESTING  
ASSOCIATION

✓ B. Plekash  
903592 C



# CHEMEX LABS LTD.

212 BROOKSBANK AVE.  
NORTH VANCOUVER, B.C.  
CANADA V7J 2C1

TELEPHONE: (604) 984-0221  
TELEX: 043-52597

• ANALYTICAL CHEMISTS

• GEOCHEMISTS

• REGISTERED ASSAYERS

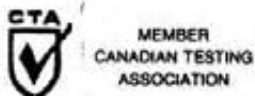
## CERTIFICATE OF ASSAY

TO : GRCCT D., LOGGING LIMITED  
MINERAL EXPLORATION DIVISION  
ATTN: BUD PLEKASH  
BOX 520  
SMITHERS, B.C. V0J 2N0

CERT. # : A8315730-001-A  
INVOICE # : I8315730  
DATE : 26-CCT-83  
P.C. # : NONE

Sample description	Prep code	Ag FA oz/T	Au FA oz/T				
✓ V83-2 3382	207	0.06	<0.003	--	--	--	--
✓ 3383	207	0.10	<0.003	--	--	--	--
✓ 3384	207	0.10	<0.003	--	--	--	--
✓ 3385	207	0.12	0.003	--	--	--	--
✓ 3386	207	0.08	<0.003	--	--	--	--
✓ 3387	207	0.10	0.030	--	--	--	--
✓ 3388	207	0.06	<0.003	--	--	--	--
✓ 3389	207	0.10	<0.003	--	--	--	--
✓ 3390	207	0.08	<0.003	--	--	--	--
✓ 3391	207	0.02	0.004	--	--	--	--
✓ 3392	207	0.08	0.003	--	--	--	--
✓ 3393	207	0.10	<0.003	--	--	--	--
✓ 3394	207	0.12	<0.003	--	--	--	--
✓ 3395	207	0.06	<0.003	--	--	--	--
✓ 3396	207	0.08	<0.003	--	--	--	--
✓ 3397	207	0.12	<0.003	--	--	--	--
✓ 3398	207	0.14	<0.003	--	--	--	--
✓ 3399	207	0.84	<0.003	--	--	--	--
✓ 3400	207	0.10	<0.003	--	--	--	--
✓ 3401	207	0.04	<0.003	--	--	--	--
✓ 3402	207	0.08	<0.003	--	--	--	--
✓ 3403	207	0.18	<0.003	--	--	--	--
✓ 3404	207	0.10	<0.003	--	--	--	--
✓ 3405	207	0.08	<0.003	--	--	--	--
✓ 3406	207	0.08	<0.003	--	--	--	--
✓ 3407	207	0.08	<0.003	--	--	--	--
✓ 3408	207	0.10	<0.003	--	--	--	--
✓ 3409	207	0.06	<0.003	--	--	--	--
✓ 3410	207	0.06	<0.003	--	--	--	--
✓ 3411	207	0.06	0.005	--	--	--	--
✓ 3412	207	0.06	<0.003	--	--	--	--
✓ 3413	207	0.02	0.003	--	--	--	--
✓ 5483-6 3414	207	0.10	<0.003	--	--	--	--

Registered Assayer, Province of British Columbia



C



# CHEMEX LABS LTD.

212 BROOKSBANK AVE.  
NORTH VANCOUVER, B.C.  
CANADA V7J 2C1

TELEPHONE: (604) 984-0221  
TELEX: 043-52597

• ANALYTICAL CHEMISTS

• GEOCHEMISTS

• REGISTERED ASSAYERS

\*\*\* INVOICE \*\*\*

To : GRCOT D., LOGGING LIMITED  
MINERAL EXPLORATION DIVISION  
ATTN: BUD PLEKASH  
BOX 520  
SMITHERS , B.C. V0J 2N0

Invoice # : 18315176  
Date : 7-OCT-83  
P.O. # : NONE  
Project

Invoice for analytical work reported on certificate(s) A8315176-001

Quantity	Analysed for code description	unit price	amount
27	323 - Co %		
	383 - Ag FA oz/T		
	396 - Au FA oz/T	16.50	445.50
Sample preparation and other charges :			
27	207 - Assay - PULVERIZE	3.75	101.25

TOTAL \$ 546.75

Please pay this amount ----> \$ 546.75

=====

TERMS -- NET 30 DAYS

1.5 % per month (18 % per annum) charged on overdue accounts

*O.K. Bud Plekash*  
9035-92



D



# CHEMEX LABS LTD.

212 BROOKSBANK AVE.  
NORTH VANCOUVER, B.C.  
CANADA V7J 2C1

• ANALYTICAL CHEMISTS

• GEOCHEMISTS

• REGISTERED ASSAYERS

TELEPHONE: (604) 984-0221  
TELEX: 043-52597

\*\*\* INVOICE \*\*\*

To : GROOT D., LOGGING LIMITED  
MINERAL EXPLORATION DIVISION  
ATTN: BUD PLEASH  
BCX 520  
SMITHERS, B.C. V0J 2N0

Invoice # : 19315730  
Date : 26-OCT-83  
P.C. # : NCNE  
Project

Invoice for analytical work reported on certificate(s) A8315730-001

Quantity	Analysed for code description	unit price	amount
33	383 - Ag FA oz/T		
	396 - Au FA oz/T	10.50	346.50

Sample preparation and other charges :

33	207 - Assay - PULVERIZE	3.75	123.75
----	-------------------------	------	--------

TOTAL \$ 470.25

Please pay this amount ----> \$ 470.25  
=====

TERMS -- NET 30 DAYS  
1.5 % per month (18 % per annum) charged on overdue accounts



*O.K. [Signature]*  
5055.92  
D





**J. T. THOMAS**  
**DIAMOND DRILLING (1980) LTD.**  
—  
**SMITHERS, B.C.**

PH. 847-3531  
P.O. BOX 394  
VOJ 2N0

To: D. Groot Logging Ltd.,  
Box 520  
Smithers, B.C.

Invoice No: 83-1  
Invoice Date: September 23, 1983  
Property: Hazelton

Groot Drill 38-7

Diamond Drilling	1264 ft @ \$49.00/ft.	\$61,936.00
(see attached page one)		
	TOTAL DUE	<u>\$61,936.00</u>

The above calculations are agreed to by:

Company Representative

J.T. Thomas, Diamond Drilling (1980)Ltd.









## DIAMOND DRILL RECORD

page 1

PROPERTY ROUCHER DEBOULE - VICTORIAHOLE NO. V83-1ALatitude \_\_\_\_\_ Elevation 1926.0 m. Bearing 180° Depth 213.97 m. Started Aug 31/83 Completed Sept 3/83Departure \_\_\_\_\_ Section \_\_\_\_\_ Dip -85° Drilled By J.T. Thomas Logged By D.C. Plecash

NQ SIZE - 0 to 45.72 m.

BQ SIZE - 45.72 to 213.97 m.

Depth metres	Formation	Sample No.	From	To	Width	Assays					
						oz Au	oz Ag	% Co			
0 - 4.57m	Overburden	3358	48.52	49.13	0.61m	40.003	0.02	40.001			
4.57m	Medium Grey Granodiorite	3359	53.74	54.80	1.06m	40.003	0.02	40.001			
	8.38, to 8.53m has lighter Granodiorite	3360	86.81	87.08	0.27m	40.003	0.02	40.001			
	4.57m to 5.18m - 0.21m core loss	3361	91.56	92.48	0.92m	0.010	0.10	40.001			
	5.18m to 8.23m - 1.62m core loss	3362	128.69	129.24	0.55m	0.008	0.08	0.015			
	8.23, to 10.67, - 1.92m core loss	3363	130.46	130.97	0.51m	40.003	0.04	40.001			
11.28m	10.67m to 11.28m - 0.24m core loss	3364	130.97	132.28	1.31m	0.003	0.06	40.001			
11.28m	Medium Grey Felsite Dyke	3365	132.28	133.35	1.07m	40.003	0.20	40.001			
17.07m	11.28m to 17.07m - 4.82m core loss	3366	133.35	134.91	1.56m	40.003	0.12	40.001			
17.07m	Medium Grey Granodiorite	3367	134.91	136.25	1.34m	40.003	0.12	40.001			
	17.07m to 20.42m - 1.07m core loss	3368	136.25	138.53	2.28m	40.003	0.02	40.001			
	At 19.81m there is a 7 mm. band of quartz with core	3369	138.53	139.97	1.44m	40.003	0.04	40.001			
	to beds at 45°	3370	139.97	141.73	1.76m	40.003	0.12	40.001			
	21.34m to 21.79m - ground up core	3371	141.73	142.34	0.61	40.003	0.04	40.001			
	22.56m to 23.17m has oxidized yellowish colour mud.	3372	142.34	144.17	1.83	40.003	0.10	40.001			
		3373	144.17	145.85	1.68	40.003	0.02	40.001			







## DIAMOND DRILL RECORD

page 4

PROPERTY ROUCHER DEBOULE - VICTORIAHOLE NO. V83-1ALatitude \_\_\_\_\_ Elevation 1926.0 m. Bearing 180° Depth 213.97 m. Started Aug 31/83 Completed Sept 3/83Departure \_\_\_\_\_ Section \_\_\_\_\_ Dip -85° Drilled By J.T. Thomas Logged By D.C. Plecash

Depth metres	Formation	Sample No.	From	To	Width	Assays			
49.84m	and Quartz with 0.24m of core loss								
49.84m	Medium Grey Granodiorite								
	At 51.88m has 3 mm. of Horneblende with core to								
	beds at 50°								
	At 51.97m has 3 mm of Hornblende with core to								
	beds at 50°								
	At 52.12m has 15 mm. of Horneblende with core to beds								
52.27m	at 50°								
52.27m	Darker Grey Granodiorite with the ground mass having								
	a brownish coloured hue.								
	53.74m to 54.80m - Feldspar Prophyry mixed with								
	Dark Granodiorite.								
	At 55.87m there is a 3 cm. band of Quartz Monzonite								
57.91m	with core to beds at 50°								
57.91m	Medium to Light Grey Granodiorite								
	at 58.55m there is a 3 mm band of Horneblende with								

core to beds at 40°



















## DIAMOND DRILL RECORD

page 1

PROPERTY ROUCHER DEBOUILLE - VICTORIAHOLE NO. V83-2Latitude \_\_\_\_\_ Elevation 1794.4 m. Bearing 126° Depth 125.27 m. Started SEPT 5, 1983 Completed SEPT 15/83Departure \_\_\_\_\_ Section \_\_\_\_\_ Dip -73° Drilled By J.T. THOMAS Logged By D.C. PLECASHNQ SIZE - 0 to 29.11m  
BQ SIZE - 29.11m to 125.27m

Depth metres	Formation	Sample No.	From	To	Width	Assays					
						oz Au	z Ag	% Co			
0 - 5.18m	Overburden	3382	44.81	45.02	0.21m	0.003	0.16				
5.18m	Medium Grey Granodiorite	3383	49.84	51.05	1.21m	0.003	0.10				
	5.18m to 6.10m - 0.52m core loss	3384	51.05	52.52	1.47m	0.003	0.10				
	6.10m to 8.23m - 0.46m core loss	3385	52.52	53.40	0.80m	0.003	0.12				
	8.23m to 11.28m - 0.40m core loss	3386	60.11	60.32	0.21m	0.003	0.08				
	12.04m to 13.11m - 0.61m core loss	3387	61.02	61.45	0.43m	0.030	0.10				
	13.11m to 13.72m - 0.30m core loss	3388	63.70	65.29	1.59m	0.003	0.06				
	13.72m to 16.46m - 1.16m core loss	3389	65.29	67.06	1.77m	0.003	0.10				
	16.46m to 17.37m - 0.43m core loss	3390	67.06	68.58	1.52m	0.003	0.08				
	17.37m to 17.98m - 0.06m core loss	3391	68.58	70.10	1.52m	0.004	0.02				
	17.98m to 19.51m - 0.91m core loss	3392	70.10	71.63	1.53m	0.003	0.08				
	At 9.30m there is a 3 mm. band of Horneblende	3393	71.63	73.15	1.52m	0.003	0.10				
	with core to beds at 65°	3394	73.15	74.68	1.53m	0.003	0.12				
	At 11.13m there is a 3 mm. band of Quartz with	3395	74.68	76.57	1.89m	0.003	0.06				
	small flakes of Molybdenite appearing in it.	3396	76.57	78.33	1.76m	0.003	0.08				
19.81m	The core is leached for 15 mm. on each side of the Quartz and core to beds is at 65°	3397	78.33	79.01	0.68m	0.003	0.12				

## DIAMOND DRILL RECORD

page 2

PROPERTY ROUCHER DEBOULE - VICTORIAHOLE NO. V83-2Latitude \_\_\_\_\_ Elevation 1794.4 m. Bearing 126° Depth 125.27 m. Started SEPT 5, 1983 Completed SEPT 15/83Departure \_\_\_\_\_ Section \_\_\_\_\_ Dip -73° Drilled By J.T. THOMAS Logged By D.C. PLEGASH

Depth metres	Formation	Sample No.	From	To	Width	Assays					
						oz Au	oz Ag	% Co			
19.81m	The Granodiorite is much darker with a brownish hue	3398	79.01	80.16	1.15m	40.003	0.14				
	in the ground mass	3399	80.16	81.08	0.92m	40.003	0.84				
	22.86m to 23.17m - sand - vug hole	3400	81.08	82.45	1.37m	40.003	0.10				
24.69m	20.42m to 21.95m - 0.46m core loss	3401	82.45	83.09	0.64m	40.003	0.04				
24.69m	Medium Grey Granodiorite	3402	83.09	83.52	0.43m	40.003	0.08				
	23.17m to 25.91m = 0.40m core loss	3403	83.52	85.35	1.83m	40.003	0.18				
	25.91m to 26.82m - 0.61m core loss	3404	85.35	86.87	1.52m	40.003	0.10				
	26.82m to 28.36m - 0.30m core loss	3405	86.87	88.15	1.28m	40.003	0.08				
	26.88m to 27.19m has the Granodiorite much lighter	3406	88.15	88.39	0.24m	40.003	0.08				
	with a few 3 mm. bands of Hornblende that has a	3407	92.45	92.90	0.45m	40.003	0.08				
	core to bed of 30°	3408	94.06	94.43	0.37m	40.003	0.10				
	28.35m to 30.05m has core ground up	3409	99.67	100.16	0.49m	40.003	0.06				
	29.26m to 29.57m has core much lighter in colour	3410	100.16	101.19	1.03m	40.003	0.06				
	At 30.18m there is a 2 mm. band of Quartz with core	3411	101.19	101.50	0.31m	0.003	0.06				
	to beds at 80°	3412	101.50	102.23	0.73m	40.003	0.06				
	32.92m to 35.36m ground up core with sand - 1.83m	3413	102.23	103.45	1.22m	40.003	0.02				

core loss



## DIAMOND DRILL RECORD

page 4

PROPERTY ROUCHER DEBOULE - VICTORIAHOLE NO. V83-2Latitude \_\_\_\_\_ Elevation 1794.4 m. Bearing 126° Depth 125.27 m. Started SEPT 5, 1983 Completed SEPT 15/83Departure \_\_\_\_\_ Section \_\_\_\_\_ Dip -73° Drilled By J.T. THOMAS Logged By D.C. PLECASH

Depth metres	Formation	Sample No.	From	To	Width	Assays							
	49.84m to 51.05m has mixed Quartz Monzonite and Light												
	coloured Granodiorite												
	51.05m to 53.40m has Quartz Monzonite with a few 3 mm												
53.40m	bands of Horneblende												
53.40m	Medium to Dark Grey Grnaodiorite												
	59.44m to 59.74m - ground core 0.15m of core loss												
	60.11m to 60.32m has a mixture if oxidized Feldspar												
	Porphyry and Quartz with core to bed at 50°												
	61.02m to 61.45m has a mixture of oxidized Feldspar												
61.45m	Porphyry and Quartz.												
61.45m	Lighter Grey Coloured Granodiorite - leached out with												
63.70m	large coarse Phenocrysts												
63.70m	Feldspar Porphyry												
	63.70m to 65.29m has a dark greenish grey ground mass												
	with light coloured Phenocrysts.												
	65.29m to 73.15m core has a lighter grey ground mass												

with much more Phenocrysts



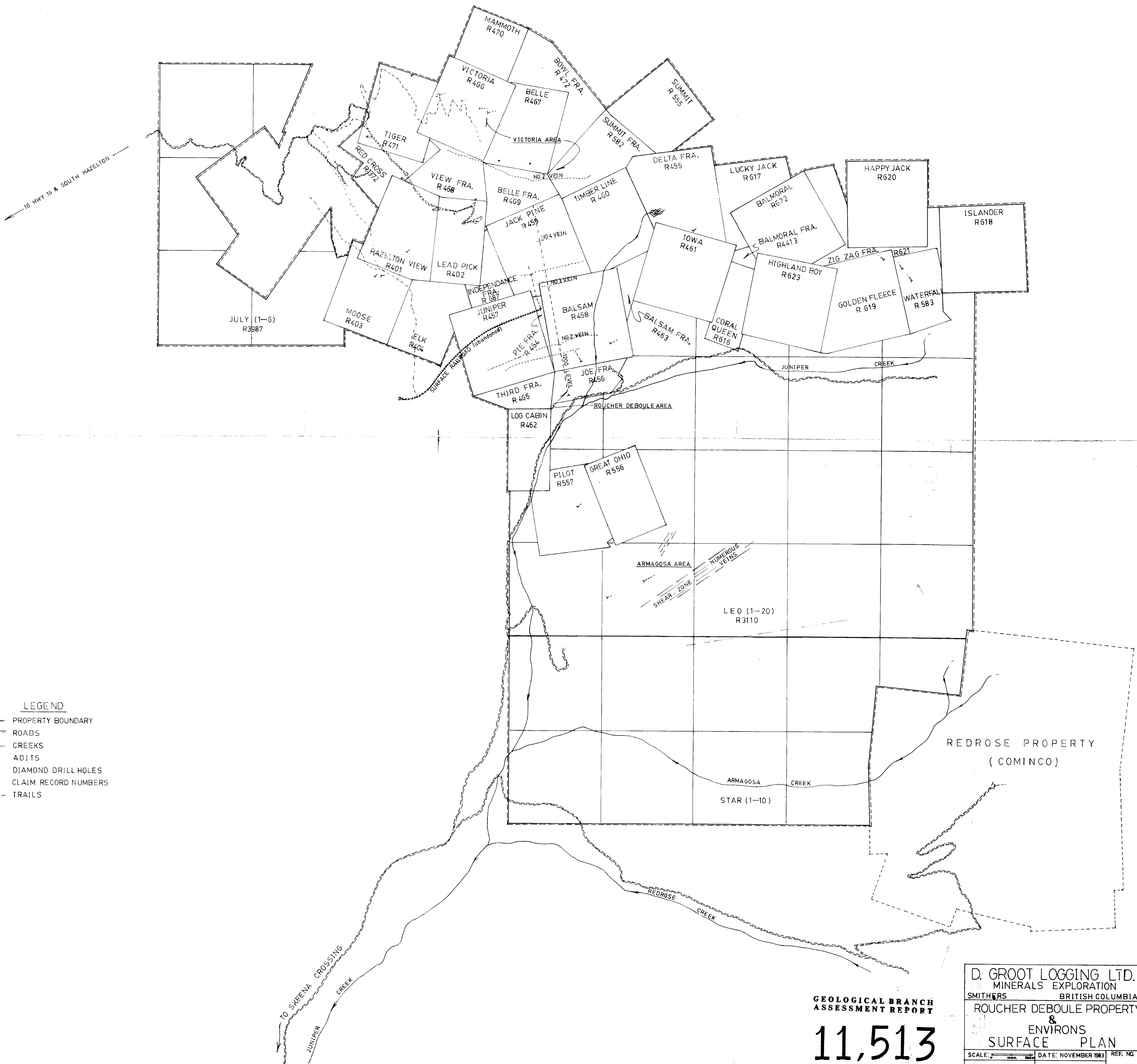










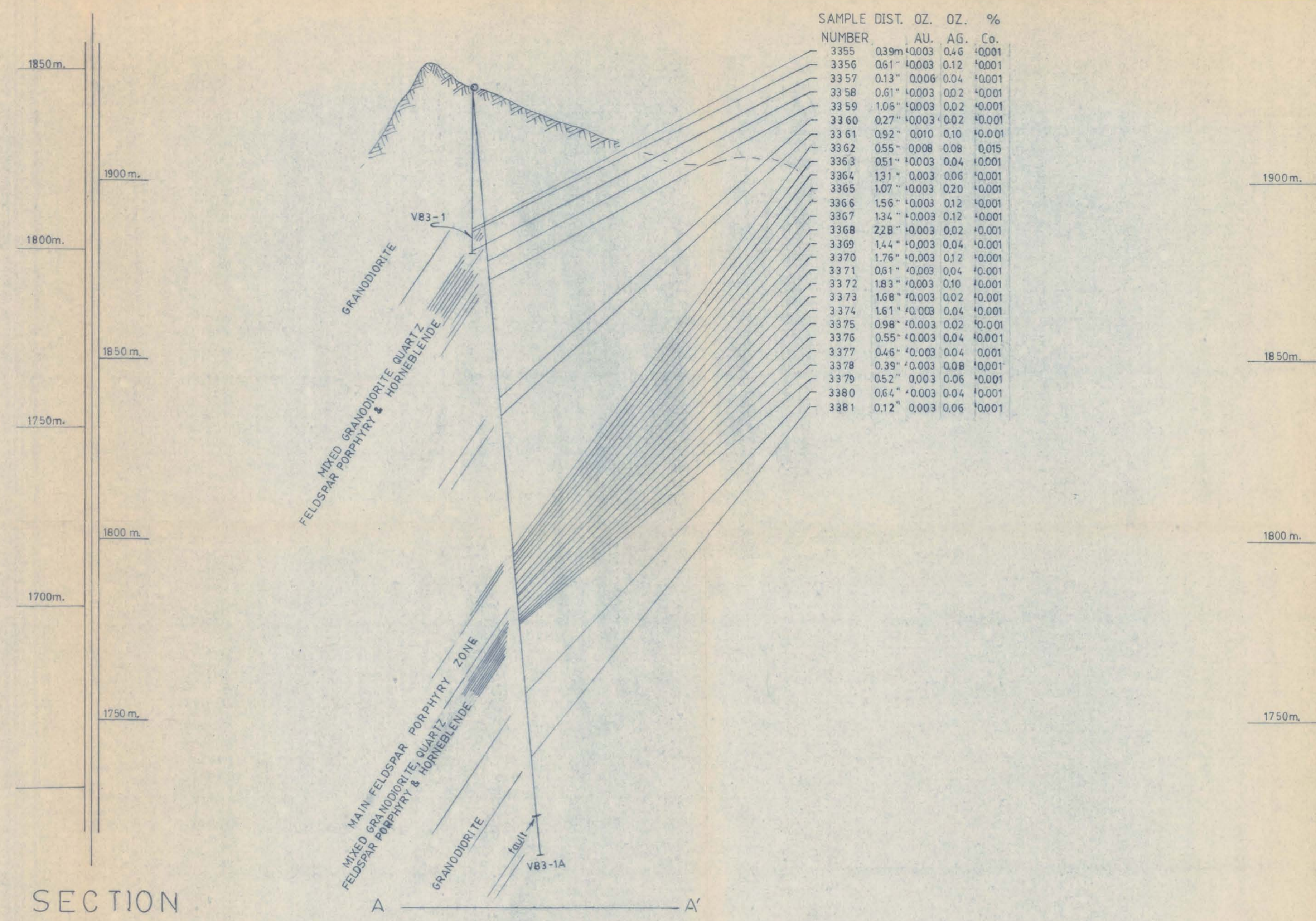
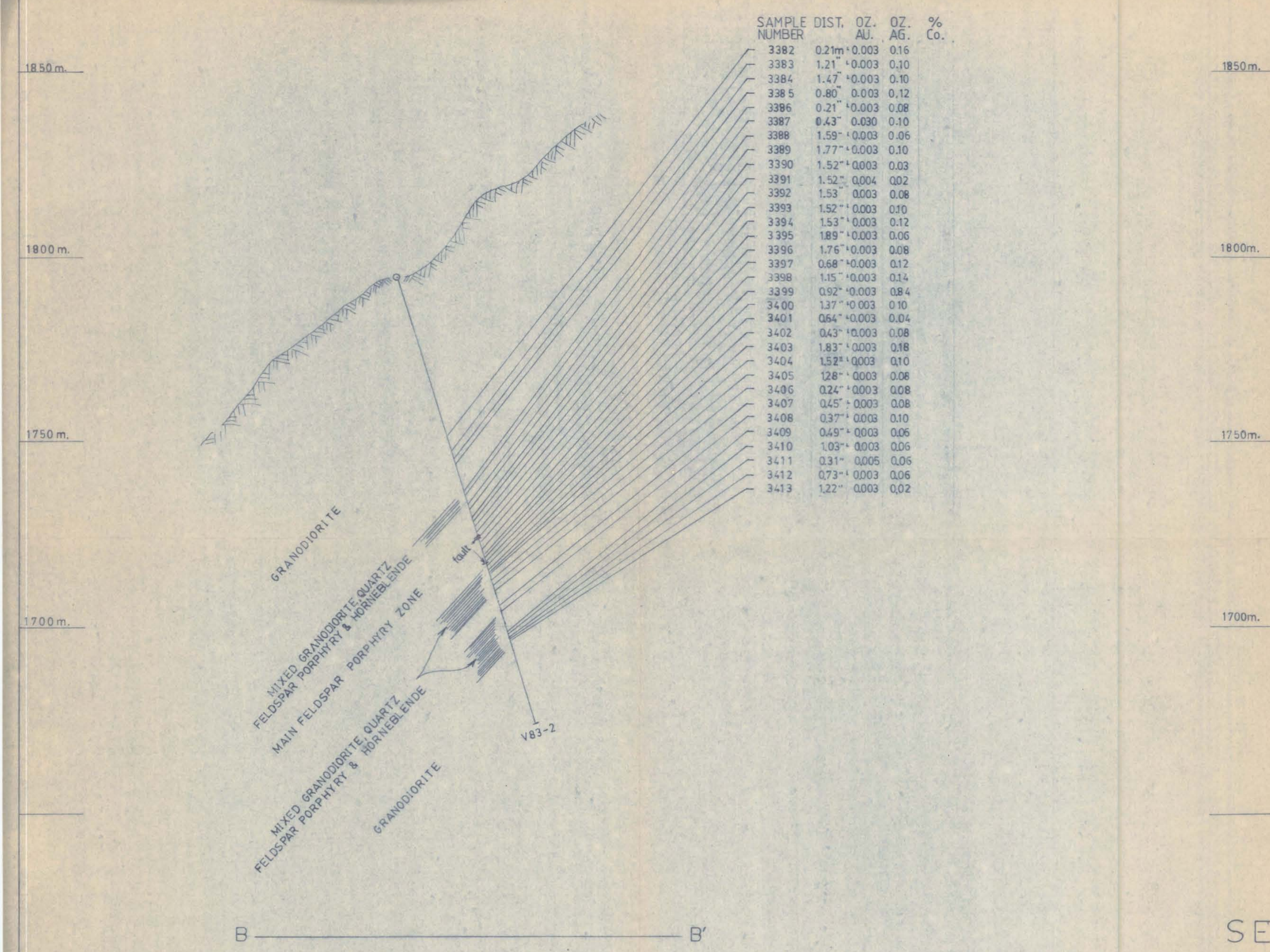


- LEGEND**
- PROPERTY BOUNDARY
  - ROADS
  - CREEKS
  - ADITS
  - DIAMOND DRILL HOLES
  - R 123 CLAIM RECORD NUMBERS
  - TRAILS

**GEOLOGICAL BRANCH  
ASSESSMENT REPORT**

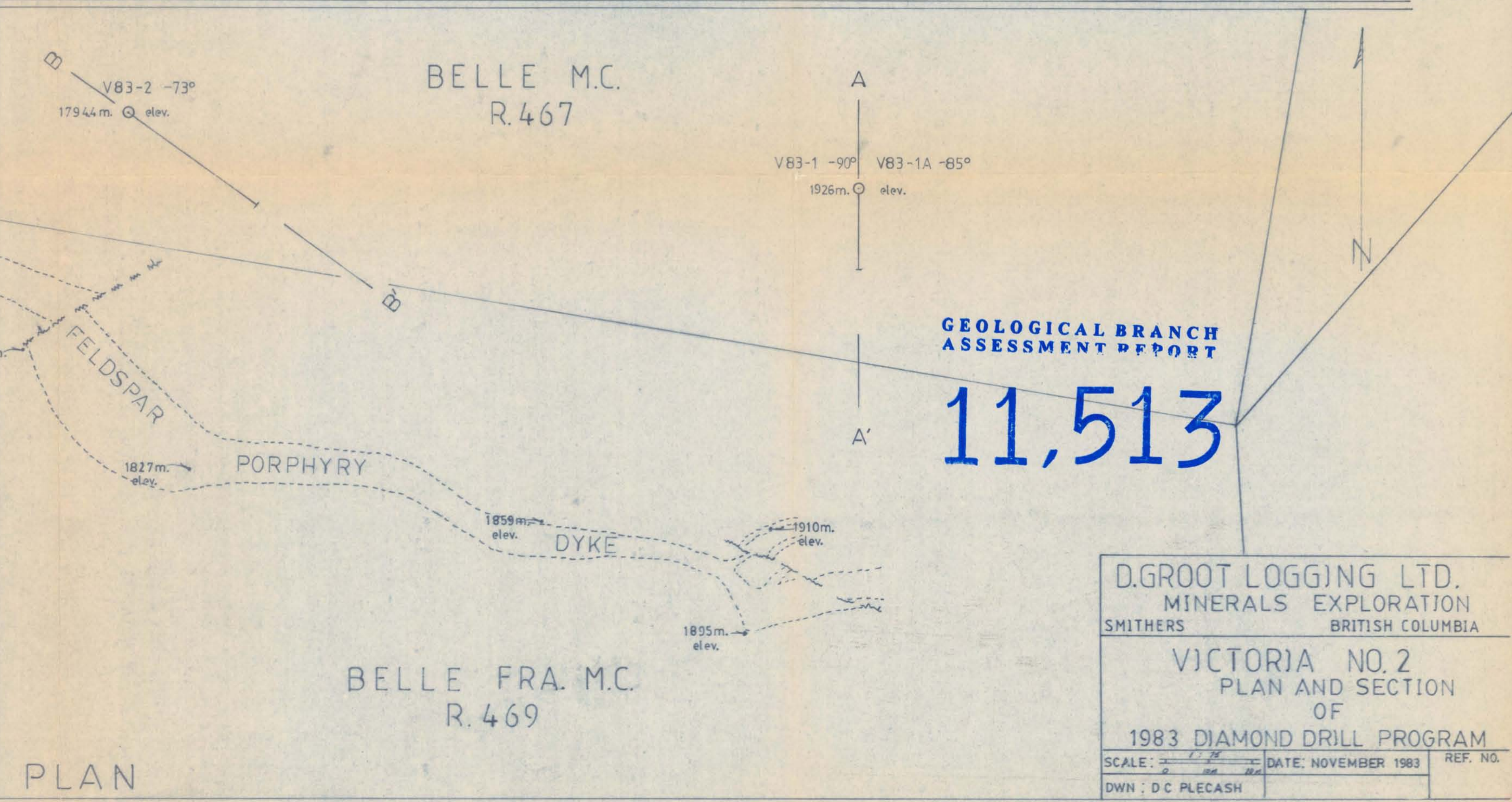
**11,513**

D. GROOT LOGGING LTD. MINERALS EXPLORATION		
SMITHERS	BRITISH COLUMBIA	
ROUCHER DEBOULE PROPERTY & ENVIRONS SURFACE PLAN		
SCALE: 1" = 100'	DATE: NOVEMBER 1983	REF. NO.
DWN: D.C. PLEKASH		



SECTION

VIEW FRA. M.C. R468



PLAN

GEOLOGICAL BRANCH ASSESSMENT REPORT

11,513

D.GROOT LOGGING LTD.  
MINERALS EXPLORATION  
SMITHERS BRITISH COLUMBIA

VICTORIA NO. 2  
PLAN AND SECTION  
OF  
1983 DIAMOND DRILL PROGRAM

SCALE:  $\frac{1}{2500}$  DATE: NOVEMBER 1983 REF. NO.  
DWN: D.C. PLEKASH