

83-#406 -#11578

GEOLOGICAL AND GEOPHYSICAL REPORT
ON THE GR1, GR 2, GR 3, GR 4 MINERAL CLAIMS

LOCATED IN THE REVELSTOKE MINING DIVISION
AT CO ORDINATES
51° 38' N 118° 33' W

BY
T.D. LEWIS, P. ENG.
(KAMLOOPS, B.C.)

NORANDA EXPLORATION COMPANY, LIMITED
(No Personal Liability)

August 1983

N.T.S. 82M/10E

**GEOLOGICAL BRANCH
ASSESSMENT REPORT**

11,578

TABLE OF CONTENTS

<u>INDEX</u>	<u>PAGE</u>
TITLE PAGE	i
TABLE OF CONTENTS	ii
ACKNOWLEDGEMENTS	1
INTRODUCTION	2
CLAIMS	3
GEOLOGY	3
GEOPHYSICS	3
EM SURVEYS	4
MAGNETOMETER SURVEY	4
RECOMMENDATIONS AND CONCLUSION	4

APPENDICES

APPENDIX #1	STATEMENT OF QUALIFICATIONS
APPENDIX #2	STATEMENT OF COST

LIST OF FIGURES AND DRAWINGS

FIGURE #1	LOCATION MAP
DRAWING 1	GEOLOGICAL PLAN
DRAWING 2	HLEM SURVEY FREQUENCY 3037 Hz (High)
DRAWING 3	HLEM SURVEY FREQUENCY 337 Hz (Low)
DRAWING 4	MAGNETOMETER SURVEY

ACKNOWLEDGEMENTS:

The work described in this report was supervised by T. Lewis. However, L. Bradish, of Noranda contributed the section on geophysics and oversaw the field work. In addition, Doug Blanchflower, a geological consultant with Minerex, jointly mapped the geology with the author.

INTRODUCTION

The GR Claim Group is located on the east bank of the Columbia River, about 50 kilometers north of the city of Revelstoke, B.C.. It is bounded on the north by the Goldstream River, and on the south by Goldstream Creek. The Goldstream Mine is about 9 kilometers east of the property.

Access to the property is by a paved highway leading from Revelstoke to Mica Creek Dam. At Goldstream Creek, the Goldstream Mine access road, crosses the property and joins with several logging roads linking the claims.

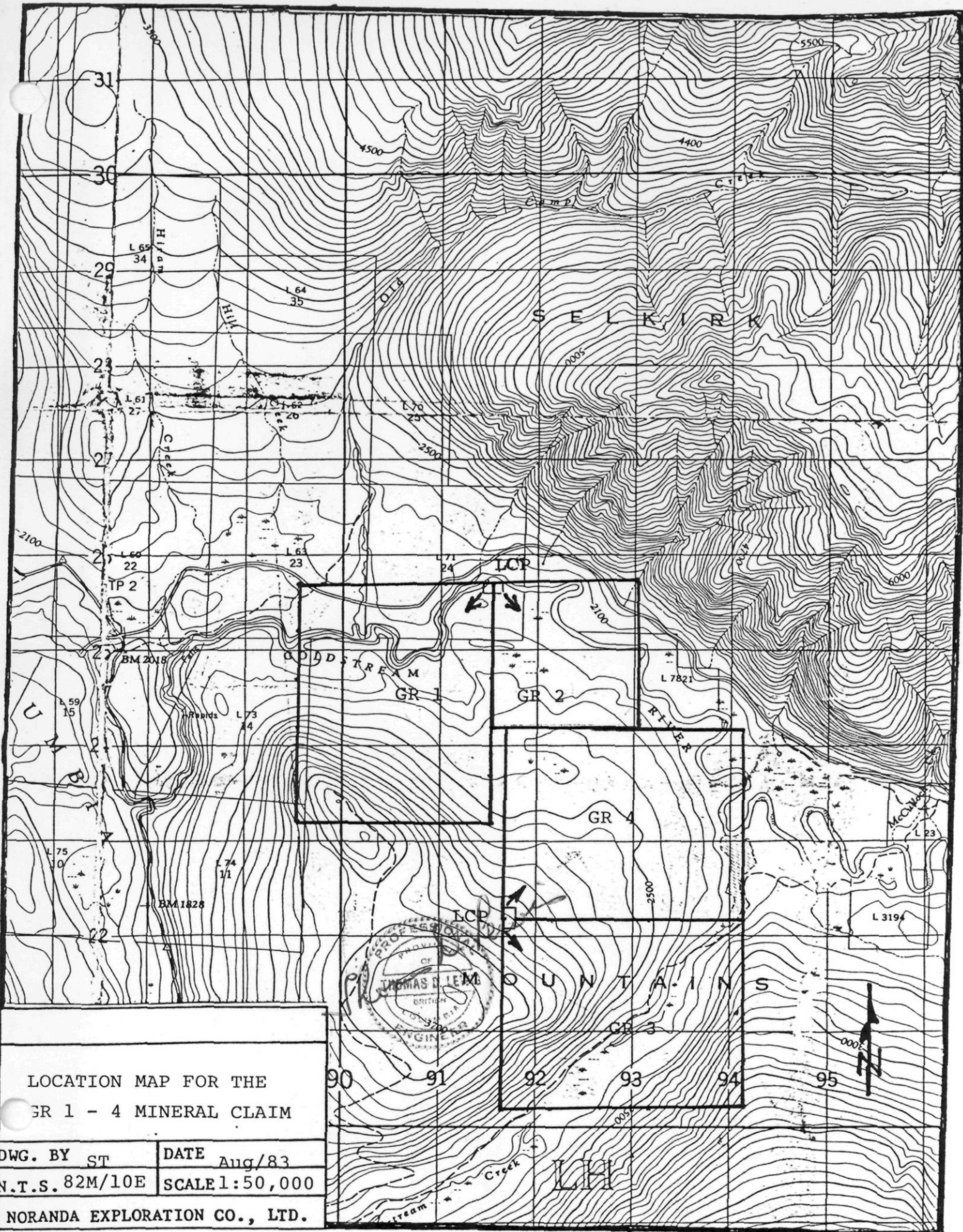
Elevations range from 2100' to 3500' ASL. The topography is moderate, however, the thick undergrowth makes ground progress slow and difficult.

Interest in the property is due to three factors, namely:

- (i) its proximal location relative to the Goldstream Mine,
- (ii) the similarity of rock units between GR and Goldstream, and
- (iii) the existence of several airborne EM anomalies on the property.

Previous work of the property dates back to the mid 1970's. In March 1977, Canex Placer optioned the property from Seaforth Mines Limited. Canex Placer performed a program of line cutting, geophysics, geochemistry, geologically mapping, and drilled a single diamond drill. The results were not encouraging and the property was returned to Seaforth.

In August and November, 1982, Noranda crews staked the GR1-4 mineral claims. In May 1983, a program of linecutting, geophysics and geology was initiated to test several airborne EM conductors. This report describes the results of that survey.



LOCATION MAP FOR THE
GR 1 - 4 MINERAL CLAIM

DWG. BY ST	DATE Aug/83
N.T.S. 82M/10E	SCALE 1:50,000

NORANDA EXPLORATION CO., LTD.

CLAIMS

The GR Group consists of four mineral claims, located within the Revelstoke Mining division. The claims are described below:

<u>Claim name</u>	<u>Number of units</u>	<u>Record Date</u>	<u>Record Number</u>
GR 1	20 units (5S,4W)	August 19	1451
GR 2	9 units (3S,3E)	August 19	1452
GR 3	20 units (4S,5E)	November 8	1525
GR 4	20 units (4N,5E)	November 8	1526

All claims were staked by employees of Noranda Exploration Company Limited. (no personal liability)

GEOLOGY

Three outcrops were located during the survey. These consisted of limestone, micaceous limestone and dolomite. The micaceous limestone indicated the foliation strikes northwesterly, with a moderate dip towards northeast.

Previous workers have determined the area is underlain by rocks of the Lardeau Group of Lower Cambrian age. These rocks consist of metamorphosed sediments and volcanics classified as muscovite, chlorite and graphite schists, with interbedded limestone, quartzite, and dolomite.

GEOPHYSICS

During the period, May 4 to 15, 1983; Noranda crews completed surveys consisting of linecutting, magnetometer and Horizontal Loop EM.

EM SURVEYS

The EM survey employed the GENIE SE-88 manufactured by Scintrex. A 100 meter coil separation was maintained with readings recorded at 25 meter intervals and at two frequency pairs (337 Hz and 3037 Hz, referenced to 112.5 Hz).

The EM survey (maps 2 and 3) did not detect any zones of bed-rock conductivity.

MAGNETOMETER SURVEY

The Mag. survey employed the G.836 Unimag proton magnetometer manufactured by EG&G of Toronto, Ontario. Readings were corrected for diurnal and day to day drift.

The Mag. survey (map 4) defined one circular feature centered at Line 11000E/10200N.

RECOMMENDATIONS AND CONCLUSION

The area tested does not appear to have any economic potential, and no further work is recommended.

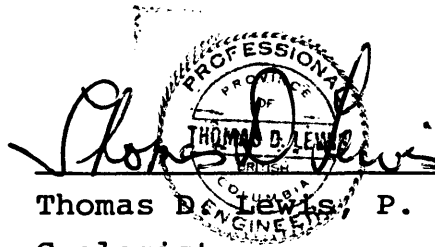
APPENDIX I

STATEMENT OF QUALIFICATIONS

STATEMENT OF QUALIFICATIONS

I, Thomas D. Lewis of the City of Kamloops, Province of British Columbia, do certify that:

1. I have been employed as a geologist by Noranda Exploration Company, Limited since April, 1979.
2. I am a graduate of Queen's University with a Bachelor of Applied Science in Geology (1975)
3. I am a member of the Association of Professional Engineers of the Province of British Columbia.
4. I am a member of the Canadian Institute of Mining and Metallurgy.



The image shows a handwritten signature in cursive that reads "Thomas D. Lewis". Overlaid on the signature is a circular professional seal. The seal contains the text "PROFESSIONAL ENGINEERS OF THE PROVINCE OF BRITISH COLUMBIA" around the perimeter and "THOMAS D. LEWIS" in the center.

Thomas D. Lewis, P. Eng.,
Geologist,
Noranda Exploration Company, Limited
(No Personal Liability)

APPENDIX II
STATEMENT OF COST

NORANDA EXPLORATION COMPANY, LIMITED

STATEMENT OF COST

PROJECT OLD CAMP

DATE AUGUST 1983

TYPE OF REPORT GEOPHYSICAL SURVEY

a) Wages:

No. of Days 69
Rate per Day \$ 86.2145
Dates From: May 2 to May 15, 1983
Total Wages 69 x \$ 86.2145 \$5,948.80

b) Food and Accommodation:

No of days 69
Rate per day \$ 59.46
Dates From:
Total Cost 69 x \$ 59.46 4,102.74

c) Transportation:

No of days 69
Rate per day \$ 28.09
Dates From:
Total Cost 69 x \$ 28.09 1,938.21

d) Instrument Rental:

Type of Instrument HLEM
No of days 10
Rate per day \$ 25.00
Dates From:
Total Cost 10 x \$ 25.00 250.00

Type of Instrument MAG

No of days 3
Rate per day \$ 15.00
Dates From:
Total Cost 3 x \$ 15.00 45.00

f) Analysis
(See attached schedule)

g) Cost of preparation of Report and Supervision

Author L.C. Bradish

200.00

Drafting

Typing

h) Other:

Contractor

Total Cost

\$12,484.75

e) Unit costs for

HLEM

No of days

No of units

15.6 Km

Unit costs

\$352.7243/ Km

Total Cost

15.6 x \$352.7243

\$5,502.50

Unit Cost for Mag

No. of Units

19.5 Km

Unit Cost

\$92.6856/Km

Total Cost:

19.5 x \$92.6856

1,807.37

Unit Cost for Linecutting

No. of Units

19.5 Km

Unit Cost

\$265.3784/Km

Total Cost:

19.5 x \$265.3784

5,174.88

\$12,484.75

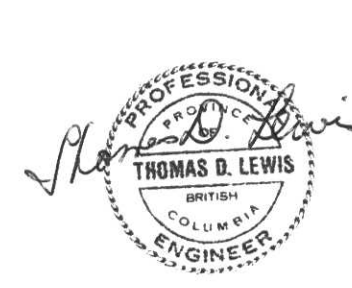


**GEOLOGICAL BRANCH
ASSESSMENT REPORT**

11,578

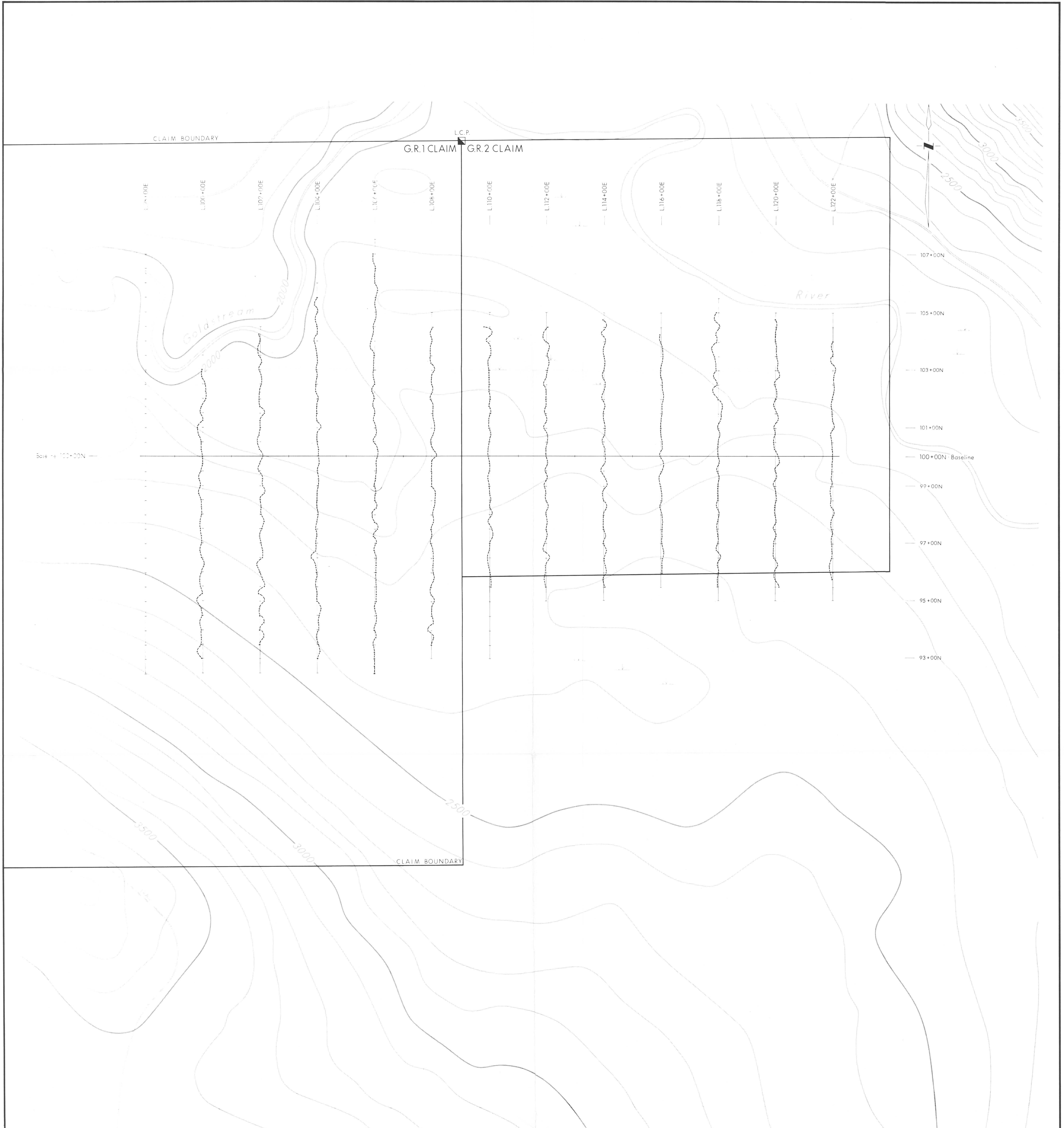
- LEGEND**
- ROCK TYPES**
- 1 DOLOMITE
 - 2 MICAEOUS LIMESTONE 2b LIMESTONE

- SYMBOLS**
- FOLIATION
 - OUTCROP
 - GEOLOGICAL CONTACT



To Accompany:
Geological & Geophysical Assessment Report on the
'GR' Mineral Claims, Revelstoke M.D., B.C. by
T.D. Lewis, P.Eng., August/1983.

REVISED	'GR' CLAIMS	
	GEOLOGICAL PLAN	
PROJ. No. 1062	SURVEY BY: T. Lewis	DATE: April/83
N.T.S. 82 M/10E	DRAWN BY: J. Lewis	SCALE: 1:5000
DWG. No. 1	NORANDA EXPLORATION	
	OFFICE: Kamloops	



**GEOLOGICAL BRANCH
ASSESSMENT REPORT**

11,578

LEGEND

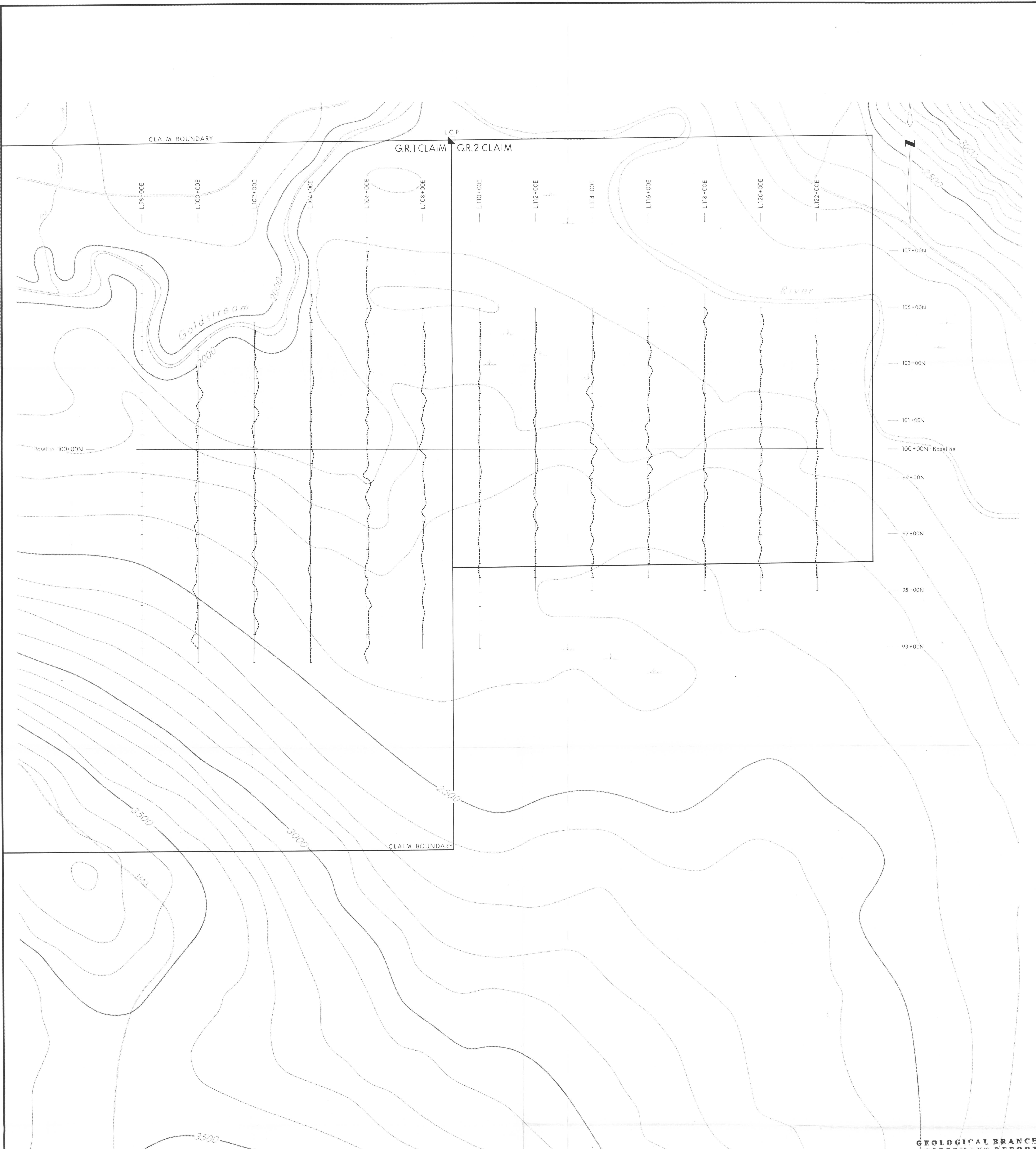
- INSTRUMENT — SE-88
- COIL SPACING — 100m.
- FREQUENCY — 3037Hz (High)
- REF. FREQUENCY — 112 Hz
- INTEGRATION TIME — 8/16 Sec.
- PROFILE SCALE — 1cm = 10%
- SURVEY DATE — May/83
- OPERATORS — L.B., K.L. & J.M.

SCALE



To Accompany:
Geological & Geophysical Assessment Report on the
'GR' Mineral Claims, Revelstoke M.D., B.C. by
T.D. Lewis, P.Eng., August/1983.

REVISED	'GR' CLAIMS	
	HLEM SURVEY	
	FREQUENCY - 3037Hz (High)	
PROJ No. 1062	SURVEY BY: L.B., K.L. & J.M.	DATE: April/83
N.T.S. 82M/10E	DRAWN BY: [Signature]	SCALE: 1:5000
DWG. No. 2	NORANDA EXPLORATION	
	OFFICE: Kamloops	

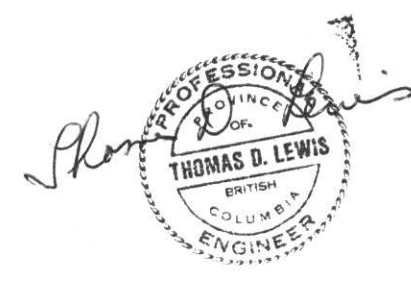
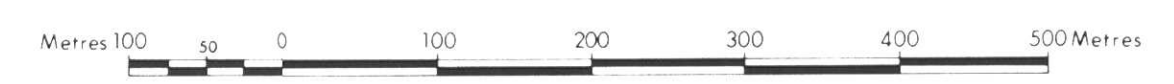


**GEOLOGICAL BRANCH
ASSESSMENT REPORT**

LEGEND 11,578

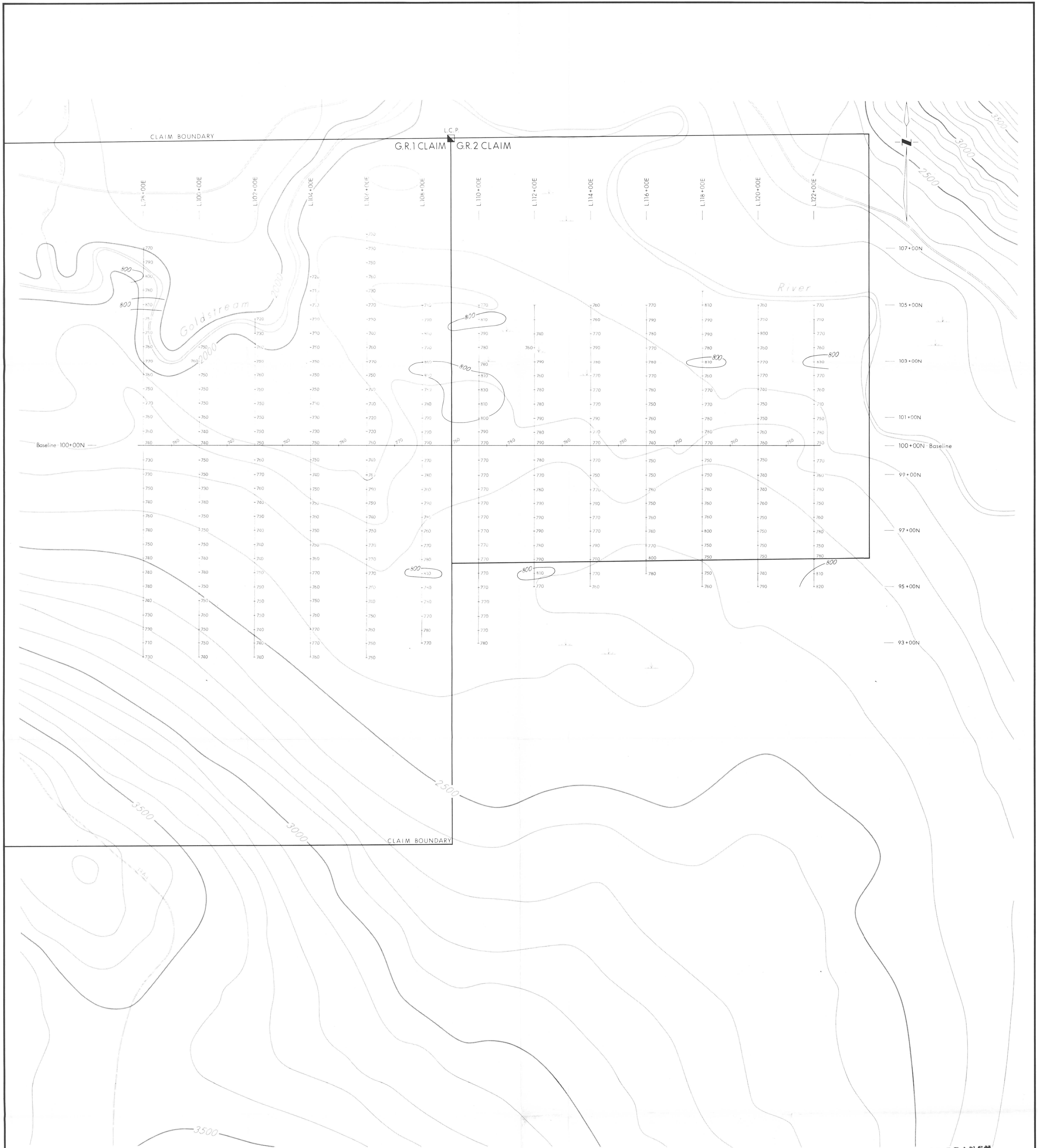
- INSTRUMENT — SE-88
- COIL SPACING — 100m.
- FREQUENCY — 337Hz (Low)
- REF. FREQUENCY — 112 Hz
- INTEGRATION TIME — 8/16Sec.
- PROFILE SCALE — 1cm = 10%
- SURVEY DATE — May/83
- OPERATORS — LB, K.L. & J.M.

SCALE
1:5000



To Accompany:
Geological & Geophysical Assessment Report on the
'GR' Mineral Claims, Revelstoke M.D., B.C. by
T.D. Lewis, P.Eng., August/1983.

REVISED	'GR' CLAIMS	
	HLEM SURVEY	
	FREQUENCY - 337 Hz (Low)	
PROJ. No. 1062	SURVEY BY: L.B., K.L. & J.M.	DATE: April/83
N.T.S. 82 M/10E	DRAWN BY: J.S.V.P.P.	SCALE: 1:5000
DWG. No. 3	NORANDA EXPLORATION	
	OFFICE: Kamloops	

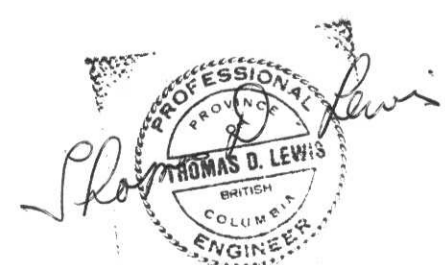


**GEOLOGICAL BRANCH
ASSESSMENT REPORT**

11,578
LEGEND

- INSTRUMENT — Proton Unimag
- FIELD — Total
- DATUM — 57000
- CONTOURS — 800s
- SURVEY DATE — May/1983
- OPERATOR — J. Moore

SCALE



To Accompany:
Geological & Geophysical Assessment Report on the
'GR' Mineral Claims, Revelstoke M.D., B.C. by
T.D. Lewis, P.Eng., August/1983.

REVISED	'GR' CLAIMS	
	MAGNETOMETER SURVEY	
PROJ. No. 1062	SURVEY BY: J. Moore	DATE: April/83
N.T.S. 82M/10E	DRAWN BY: J. Moore	SCALE: 1:5000
DWG. No. 4	NORANDA EXPLORATION	
	OFFICE: Kamloops	