

83-#831 - 7# 11624
12

GOLD COMMISSIONER

DEC 8 1983

KAMLOOPS
BRITISH COLUMBIA

ASSESSMENT REPORT ON THE LUX GROUP OF MINERAL CLAIMS
IN THE KAMLOOPS MINING DIVISION

EXPLORATION AND GEOLOGY REPORT - HIGHLAND VALLEY AREA

LOCATION: 1:50,000 NTS 92I/10
L.C.P. Lux #1 M.C.: 50°33'N, 121°54'E
UTMG COORDINATES: 5601,700mN, 646,300mE

OWNER/OPERATOR: GOLDRICH RESOURCES INC.
812-475 HOWE ST.
VANCOUVER, B.C.
V6B 2B3

CONSULTANT/AUTHOR: R.A. WELLS

DATE: OCTOBER 19, 1983

**GEOLOGICAL BRANCH
ASSESSMENT REPORT**

11,624

TABLE OF CONTENTS

	P A G E
INTRODUCTION.....	1,2
DETAILED TECHNICAL DATA AND INTERPRETATION.....	3-5
GEOCHEMICAL SOIL RESULTS.....	6
DETAILED COST STATEMENT.....	7-8
AUTHORS CERTIFICATE.....	9

MAPS

LOCATION MAP.....	figure 1
INDEX MAP (1:50,000).....	figure 2
CLAIM MAP (1:50,000).....	figure 3
BASE MAP (GEOLOGY 1: 5,000).....	figure 4 (in pocket)

INTRODUCTION

The Lux Group owned and operated by Goldrich Resources Incorporated is located approximately 200 kilometers northeast of Vancouver in the Highland Valley (see figure 1).

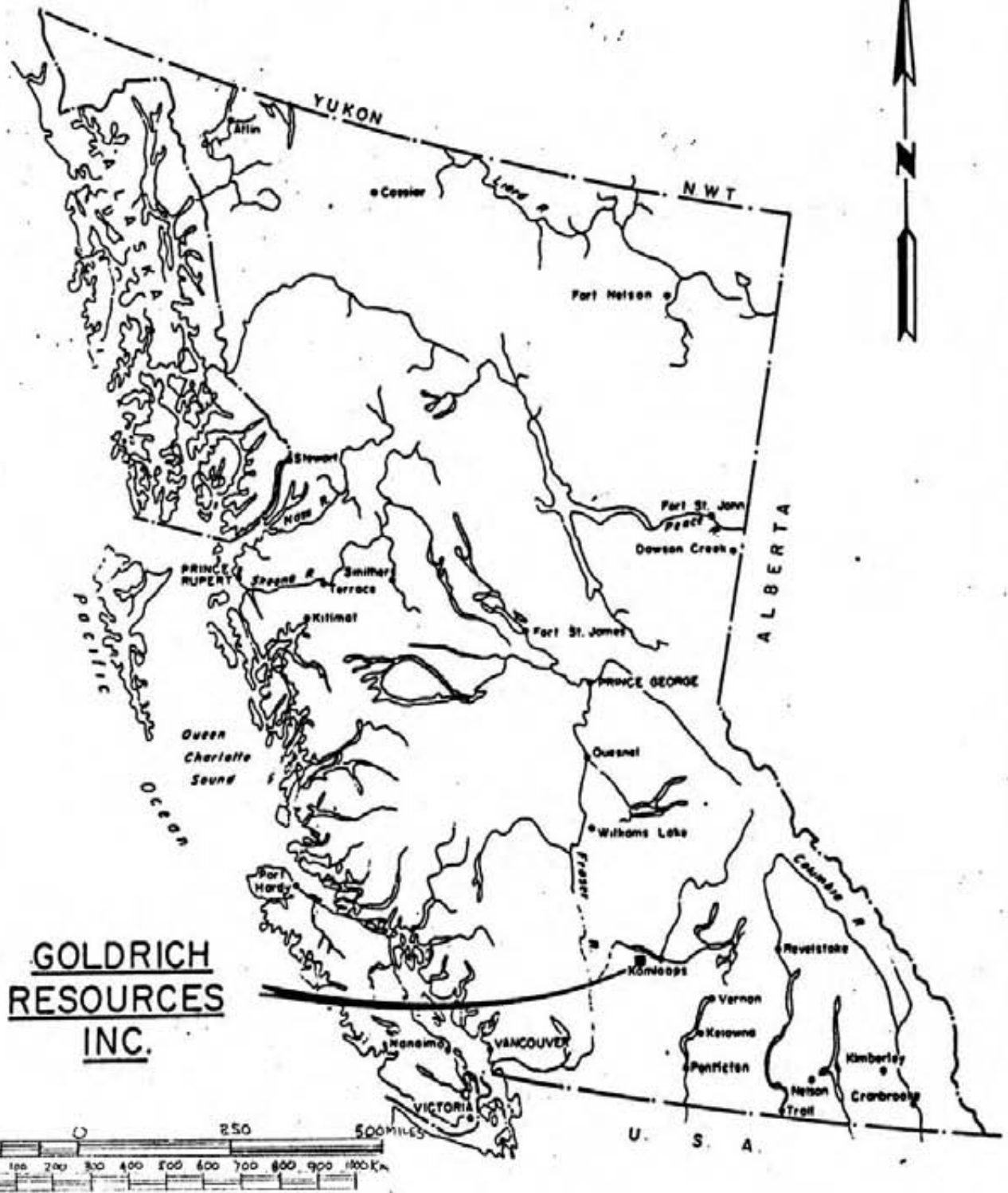
The group lies in the Kamloops Mining Division about 26 kilometers southeast of the town of Ashcroft. The best access is via a gravel road which turns off to the north from the Bethlehem Mine Road (Valley Copper) onto the Bose Lake Road. This road crosses the Krain and Trojan Properties where it enters the west side of the claim group at the 5 mile marker (see figure 2).

The elevation of the property ranges from 4000 to 5600 feet above sea level. The terrain^s is undulating and surrounds Bose Hill; vegetation consists of thick growths of conifers, particularly jackpine.

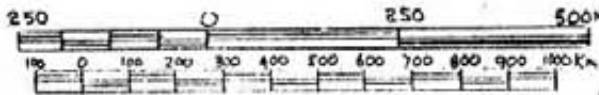
The Lux Group consists of 5 M.G.S. Mineral Claims totalling 78 units (see figure 3).

This prospect had various owners in the late 1950's and early 1960's but no serious exploration programs were conducted until Canzac Mines Ltd. became owner in 1964. By early 1965 Canzac was very active with road building, trenching, geophysics, and diamond drilling. Eight holes were drilled totalling 4200 feet. Much of this work was concentrated in what corresponds to the northwest portion

LOCATION MAP



**GOLDRICH
RESOURCES
INC.**



GOLDRICH RESOURCES INC.		
LUX GROUP	KAMLOOPS M.D.	
1 inch = 250 miles (1 cm. ≈ 160 Km.)		FIGURE 1

INDEX MAP



Tp 18

50°30'

121°00' 44 45 R22 46 47 55' 48 49 50 51

CHERRY CREEK 92I/10

1:50,000

FIGURE 2

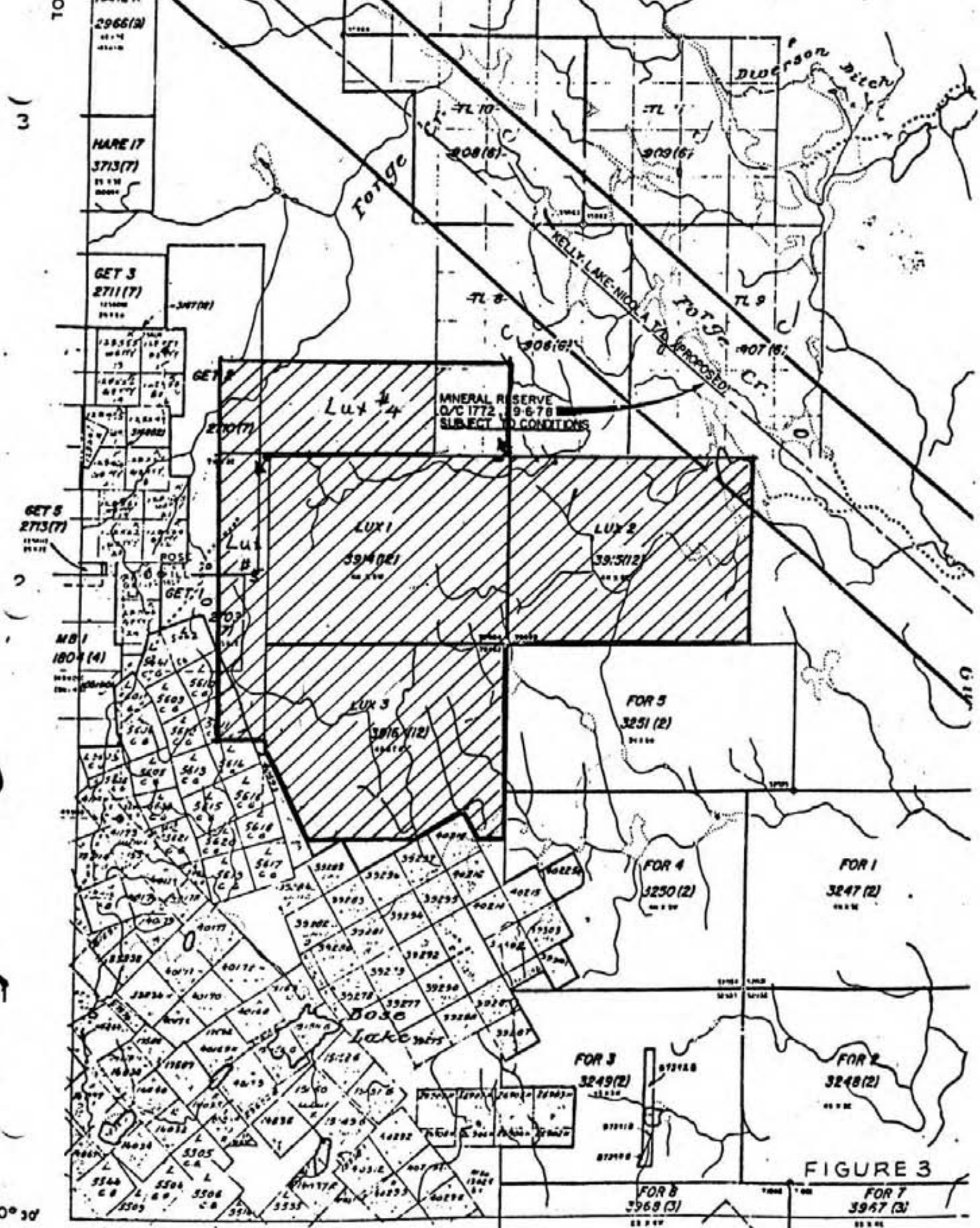


FIGURE 3

TO SOUTH SEE MAP

of the current Lux Group. In 1966, a geological report was made based on photogeology and previous work, by Chew-Walker Associates of Willowdale, Ontario. Some copper occurrences were discovered on the current Lux #1 during the above exploration. In 1982, Goldrich Resources acquired the current claims.

Exploration activities conducted by Goldrich Resources to assess the economic potential of the claims was initiated by 3 important criteria; the presence of the Krain and Trojan copper deposits immediately west of the Lux Claims, the favorable Guichon Intrusive lithology on the property, and the presence of known copper occurrences.

Work completed on the claims in 1983 is summarized as follows: 5.9 kilometers of powersaw cut and picketed lines. 25.5 kilometers of flagged crosslines, the collection of 49 soil samples for copper analysis, and the prospecting and reconnaissance mapping of the gridded area defined above (refer to Base Map, figure 4). Aside from the soil samples collected on Lux #4, all other work was conducted on Lux #1, Lux #3, Lux #4 and Lux #5.

DETAILED TECHNICAL DATA AND INTERPRETATION

The choice of the area of examination was determined by the presence of known porphyry copper deposits within 1.0 kilometers of the western claim boundary, by previously reported copper occurrences within the area, and the Kamloops Volcanic/Guichon Intrusive contact.

To establish control for exploration activities over this relatively thick wooded area, a grid was constructed over approximately a 2.0 kilometer square area with equi-spaced flagged lines every 200 meters. This area was explored by myself serving the role of geologist/pro prospector. While traversing the lines I recorded old Lux claim posts to relate to old data, new claim posts, roads, old diamond drill sites, old trenches, and relevant topographical features. All old trenching encountered was examined for outcrop and copper occurrences, the Kamloops volcanic/intrusive contact was mapped, outcrop was recorded and prospected for copper mineralization, and several linears defined by air photo interpretation were examined. Towards the north end of the grid 49 soil samples were collected and analysed for ppm copper content. The sampling procedure consisted of digging a hole generally 20-30cm in depth with a digging tool, well into the B-horizon and collecting 100-200 grams of soil which in each case was stored in appropriately labelled standard brown paper soil bags.

Results:

Two previously explored copper occurrences examined are of north trending shear/fault zones in Guichon intrusive which is typically altered and contains spotty amounts of chalcopyrite, pyrite, malachite, and occasional bornite (see L4+00N, 11+50W and L10+00N, 9+50W). Neither showing indicates local economic potential, (see Base Map Geology, figure 4).

A soil line run across the north trending mineralized zones did not define any significant copper anomalies. Some of the linears defined by photogeology contain altered rock suggesting possible fault activity but no copper was apparent.

Conclusions and Recommendations:

In view of the abundant outcrop prospected on the existing grid area examined and the lack of copper mineralization evident particularly to the south, I would not recommend further exploration on the grid area at this time.

The remaining two thirds (2/3) - 12 square kilometers of the Lux Group has virtually no known previous exploration. In consideration of proximal ore bodies (the South Seas Trojan Zone, and the North Pacific Krain Zone) and the Guichon Lithology I recommend that the remaining portion of the Lux Group be explored with a Stage I approach similar to that conducted this season. Follow-up of discovered copper occurrences would include detailed mapping, detailed soil

geochemistry, and possibly magnetometer surveys as a next step in development.

DETAILED COST STATEMENT

July 16-30, 1983.Crew Supervisor, Fred Klages.

July 25 1 man day Powersaw baseline
 July 26 1 man day Powersaw baseline
 July 27 1 man day Powersaw baseline
 July 28 1 man day Powersaw baseline
 July 29 1 man day Powersaw baseline

Total time 5 man days @ \$160.00 per \$ 800.00

Linecutters, Vince Emmerick, Pete Johnston, Fred Elsaseer.

July 25 2 man days linecutting
 July 26 2 man days linecutting
 July 27 2 man days linecutting
 July 28 3 man days linecutting
 July 29 3 man days linecutting

Total time 12 man days @ \$135.00 per \$1,620.00

Surveyor, Draftsman, Rick Mitchell.

July 14 1 man day drafting
 July 15 1 man day drafting

Total time 2 man days @ \$140.00 per \$ 280.00

AUGUST 1-25, 1983.Surveyor, Draftsman, Rick Mitchell

Aug. 2 1 man day linecutting
 Aug. 3 1 man day linecutting
 Aug. 4 1 man day linecutting
 Aug. 5 1 man day linecutting

Total time, 4 man days @ \$140.00 per \$ 560.00

August 2-25, 1983.

Aug. 2	3	man days	linecutting
Aug. 3	3	man days	linecutting
Aug. 4	3	man days	linecutting
Aug. 5	1	man day	linecutting
Aug. 16	3	man days	linecutting
Aug. 17	3	man days	linecutting
Aug. 22	1	man day	linecutting
Aug. 23	1	man day	linecutting
Aug. 24	1	man day	soil sampling
Aug. 25	1	man day	soil sampling

Total time 20 man days @ \$135.00 per	\$2,700.00
---------------------------------------	------------

TRUCK DAYS.

18 truck days @ \$52.00 per day fuel inclusive	\$ 936.00
---	-----------

POWERSAW RENTAL.

5 days @ \$25.00 per day fuel inclusive	\$ 125.00
--	-----------

Supplies

Flagging tape, 30 rolls, @ 1.80 ea.	54.00
Chain thread, 50 rolls @ 2.70 ea.	135.00
Kamloops Research & assay Laboratory	<u>114.66</u>
	\$ 303.66

Ray Wells, Geologist.

Aug. 3	$\frac{1}{2}$	day	Prospecting & mapping	
Aug. 11	$\frac{1}{2}$	day	"	"
Aug. 12	1	day	"	"
Aug. 16	1	day	"	"
Aug. 17	1	day	"	"
Aug. 22	1	day	"	"
Aug. 23	1	day	"	"
Aug. 24	1	day	"	"
Aug. 25	1	day	"	"

Total time 8 man days @ \$225.00 per	<u>\$1,800.00</u>
--------------------------------------	-------------------

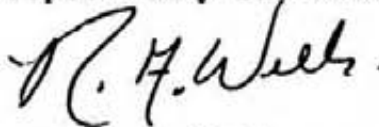
SUM TOTAL AVAILABLE FOR ASSESSMENT	\$9,124.66
------------------------------------	------------

AUTHORS CERTIFICATE

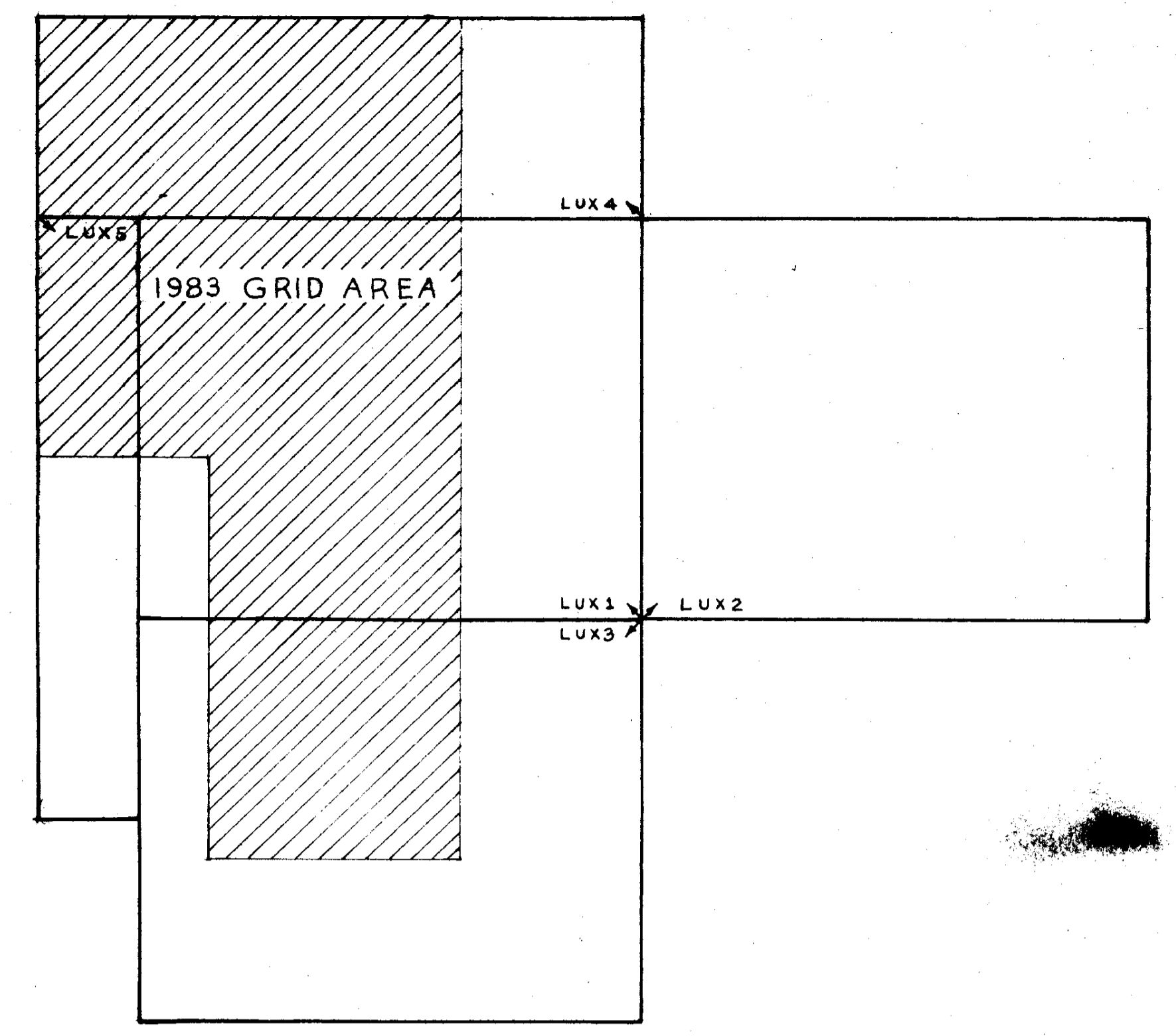
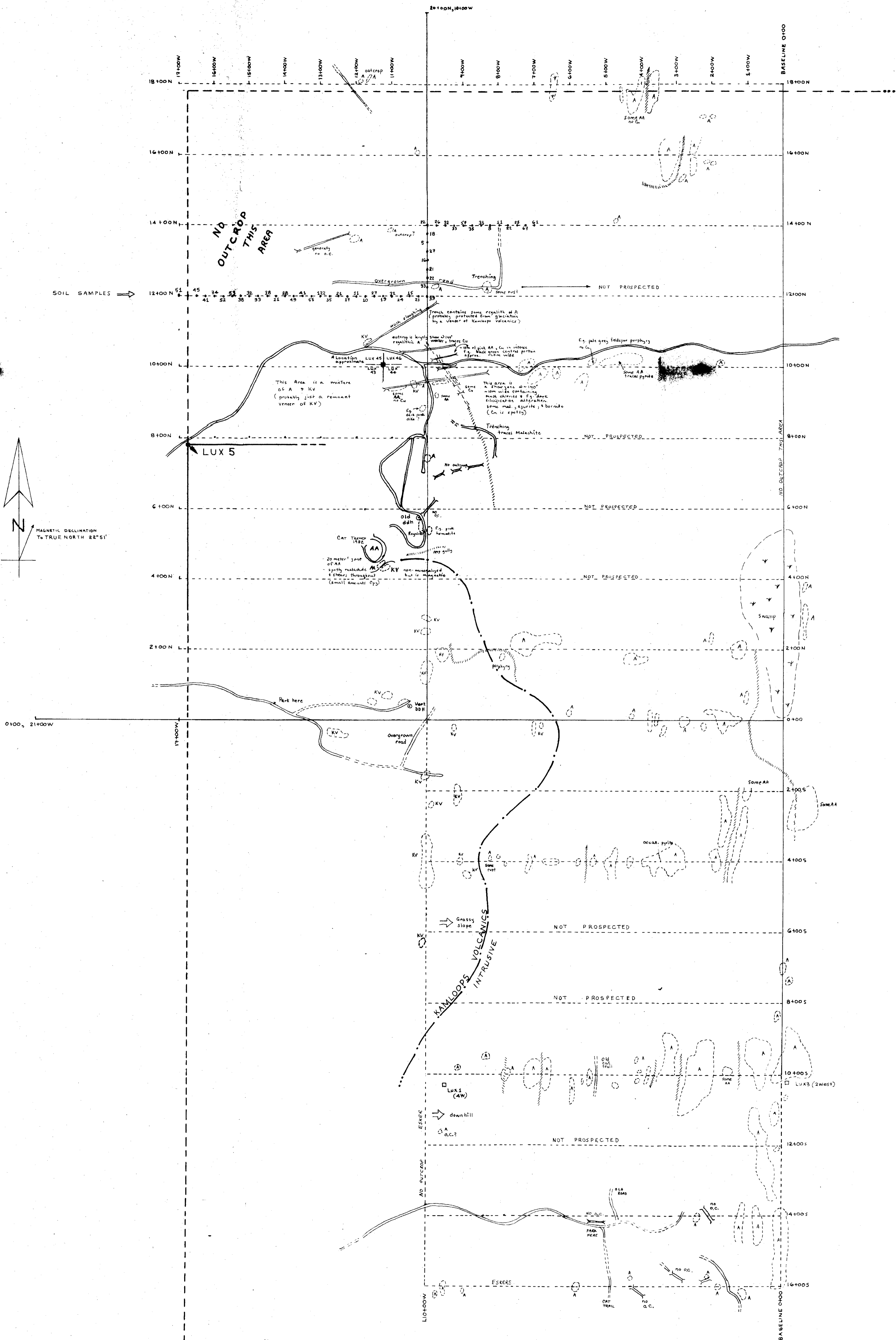
I, Raymond A. Wells, of Merritt, British Columbia, do hereby certify that:

1. I am a geologist employed by Scope Exploration Services Ltd., P.O. Box 1101, Merritt, British Columbia.
2. I am a graduate of the University of British Columbia with a BSc. Degree in Geology (1976).
3. I have practised my profession since graduation. My previous employers include Trigg, Woollett and Associates of Edmonton, Pan Ocean Oil Ltd. of Calgary, and Cordilleran Engineering of Vancouver.
4. Recent clients include London Silver Corporation of Vancouver, Lawrence Mining Corporation, and Goldrich Resources Inc. of Vancouver, B.C.
5. This assessment report is based on research and field work conducted by myself and support crew during July and August 1983.

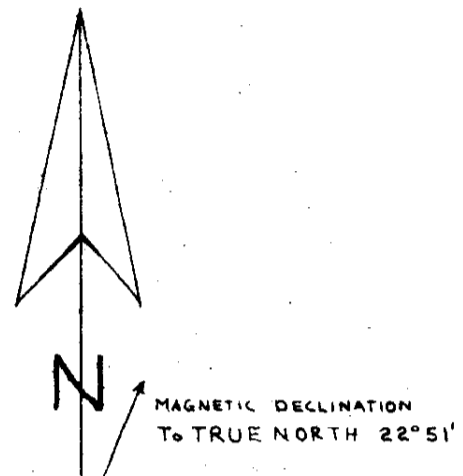
Respectfully submitted,



Raymond A. Wells,
October 20, 1983.



SCALE - 1:20,000



LUX GROUP, EXPLORATION 1983. — GRID GEOLOGY

GEOLOGICAL BRANCH
ASSESSMENT REPORT

11,624

GOLDRICH RESOURCES INC.
LUX CLAIM GROUP GRID GEOLOGY

LEGEND

LITHOLOGY:
 TYPE KV - BARREN KAMLOOPS VOLCANICS
 TYPE A - TYPICALLY QUICHON QUARTZ DIORITE
 ALTERED "A" (COMMONLY SAUS, FELDSPAR, PINKING FROM HEMATITE STAIN AND/OR POTASSIC FELDSPAR DEVELOPMENT, CHLORITIZATION OF MAFICS, SOME EPIDOTE, RARE PYRITE.)
 TYPE AA -

OUTCROP:
 ROAD:
 Gully:
 TRENCH:
 SOIL SAMPLE:
 POWERSAW AND/OR PICKETED LINE:
 FLAGGED LINE:

GEOLOGY - R. WELLS AUGUST 1983 R. J. WELLS

SCALE 1:5000 FIGURE 4