

1983 Geochemical Survey
Assessment Report

TITLE	Troitsa Peak Property (Cummins Creek Grid Area)
GROUP	Orange Group
CLAIMS	Cummins North Cummins South Wind Tunnel Jesse
COMMODITY	Au, Ag
LOCATION	Troitsa Peak, 135 km south of Smithers, west-central British Columbia. Latitude 53°35' N, Longitude 127°05'W Omineca Mining Division NTS 93E/11E
OWNER AND OPERATOR	Canamax Resources Inc.
WORK PERIOD	June 18 - August 9, 1983
BY	N. Cawthorn
FOR	Canamax Resources Inc.
DATE	13 December 1983

**GEOLOGICAL BRANCH
ASSESSMENT REPORT**

11,709

CANAMAX VANCOUVER OFFICE

TABLE OF CONTENTS

SUMMARY-----	1
INTRODUCTION	
General Statement-----	1
Location, Access, Topography-----	1
Claims Data-----	1
Property History-----	2
Local Geology-----	3
GEOCHEMISTRY	
General Statement-----	4
Results and Interpretation-----	4
Discussion-----	7

APPENDICES

Appendix I	-	Itemized Cost Statement
Appendix II	-	Statement of Qualifications
Appendix III	-	Analytical Methods, Results

FIGURES

Figure 1 - Location Map (1:250,000)-----	After Page 1
Figure 2 - Claims Map (1:50,000)-----	After Page 1
Figure 3 - Geochemical Map	
3a- North Sheet - Au, Ag (1:2,000)-----	In Pocket
3b- South Sheet - Au, Ag (1:2,000)-----	In Pocket
Figure 4 - Geochemical Map	
4a- North Sheet - Pb, Zn, Cu (1:2,000)-----	In Pocket
4b- South Sheet - Pb, Zn, Cu (1:2,000)-----	In Pocket

SUMMARY

This assessment report presents the results of a soil geochemical survey on the Troitsa Peak Property (Orange claim group) conducted during the period 18 June to 9 August 1983. The property is located in the Whitesail Range 135 km south of Smithers in central British Columbia.

The area studied is underlain mainly by a sequence of andesitic flows and tuffs of the Jurassic age Hazelton Group. These strata are cut by irregular plugs of diorite and by quartz feldspar porphyry dykes. Quartz veins occur locally in the andesitic flows and tuffs.

Some 1332 soil samples were collected at 25 m intervals on grid lines 100 m apart, and analysed geochemically for Au, Ag, Pb, Zn, Cu and Mo. The data yielded 11 distinct anomalies, two of which are associated with known mineralized quartz veins. Prospecting has located mineralized quartz vein float associated with three other of the anomalies and further prospecting is required to locate the source of this float. Seven additional anomalous zones remain to be investigated to determine their source.

INTRODUCTION

General Statement

This report presents results of a soil geochemical survey on the Cummins North, Cummins South, Wind Tunnel and Jesse claims of the Troitsa Peak Property, conducted over the period 18 June to 9 August, 1983. A total of 1332 soil samples were collected over a 32.3 line km flagged grid (Cummins Creek Grid). Base map control was provided by a 1:2,000 scale topographic base map enlarged from a 1:10,000 scale base map, with a 20 m contour interval, prepared by Pacific Surveys of Vancouver from existing air photographs.

Soil sampling and grid preparation was conducted by five field assistants under the direction of B. Goad and N. Cawthorn.

Location, Access, Topography

The Troitsa Peak property is located in the Whitesail Range, between Whitesail Lake to the south and Tahtsa Reach to the north, in central British Columbia (Fig. 1). The property is some 135 km south of Smithers.

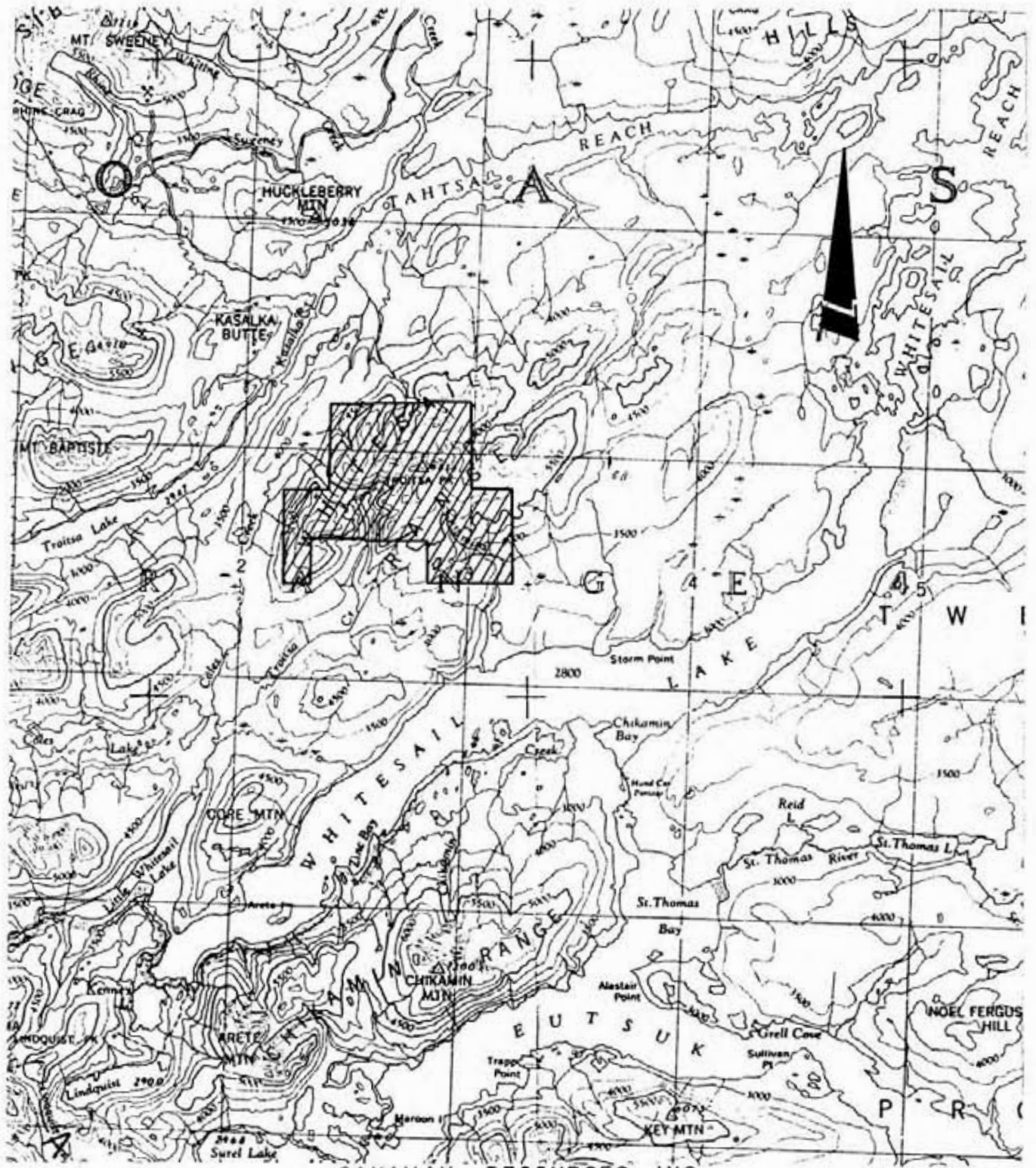
Access is by helicopter from Smithers or Houston, B.C.

The claims are centred around Troitsa Peak (2089 m). Elevations within the area of work described in this report range from 1020 m in the southeast to a maximum of 1620 m in the northwest. Almost all of this area is below tree line.

Claims Data

The Troitsa Peak Property consists of 15 contiguous claims totalling 252 units (Fig. 2). The claims were staked over the period 1981-83 and all are currently held in the name of Canamax Resources Inc. All are located within the Omineca Mining Division.

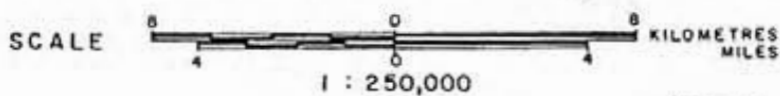
The work described in this report is being applied as two years' assessment in each of the following claims: Cummins North, Cummins South, Wind Tunnel and Jesse. The claims will be grouped as of the assessment filing date into three groups as tabulated below.



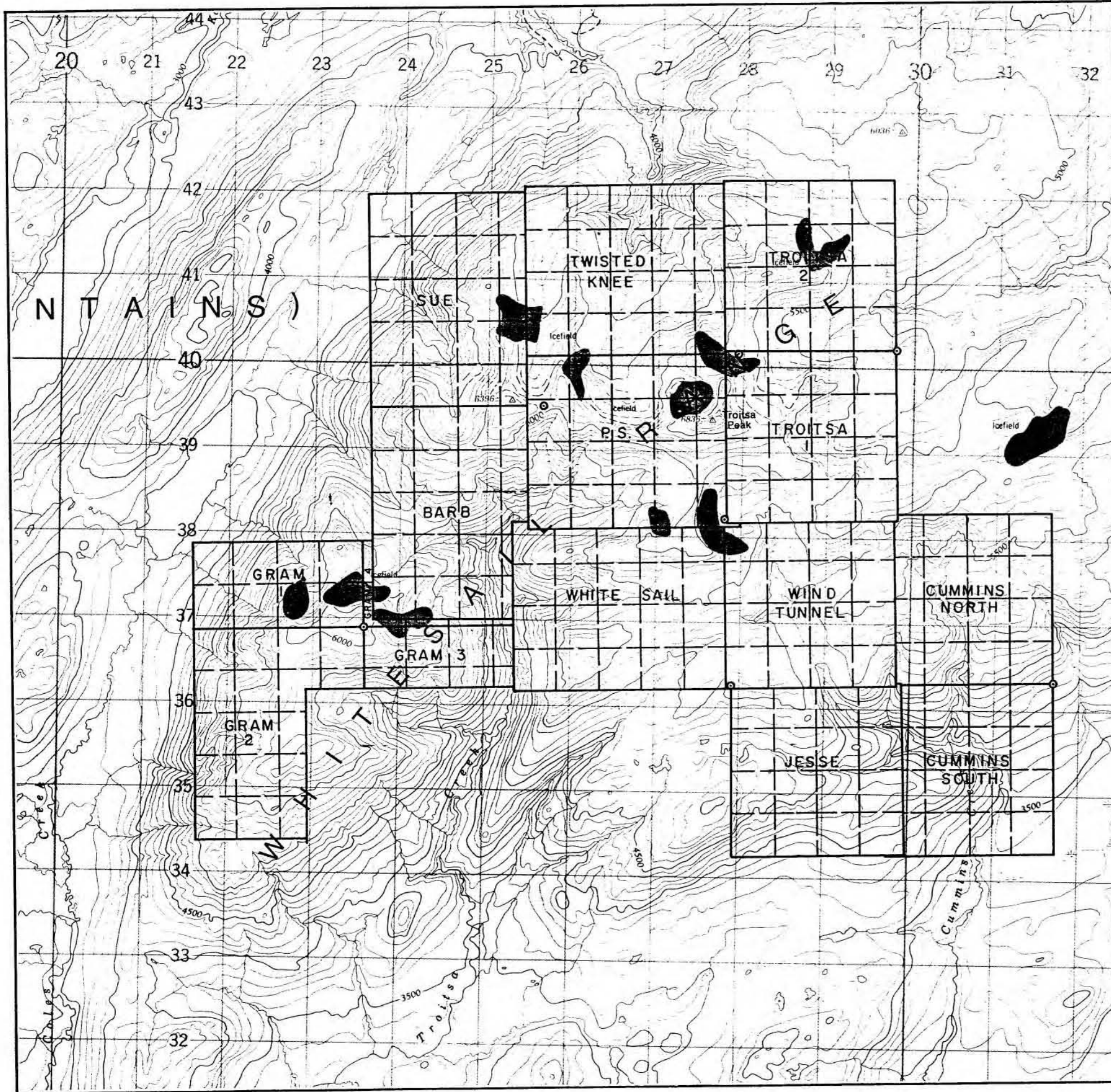
CANAMAX RESOURCES INC.

TROITSA PEAK PROPERTY
 OMINECA MINING DIVISION — BRITISH COLUMBIA

LOCATION MAP



Vancouver —



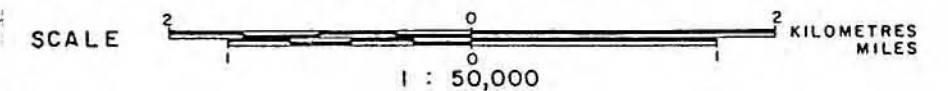
**GEOLOGICAL BRANCH
ASSESSMENT REPORT**

11,709

CANAMAX RESOURCES INC.

TROITSA PEAK PROPERTY
OMINECA MINING DIVISION — BRITISH COLUMBIA

CLAIM MAP



VANCOUVER —

H. P.

N. T. S. Ref. 93 E 11

FIG. 2

	<u>Claim</u>	<u>Units</u>	<u>Record No.</u>	<u>Record Date</u>	<u>Expiry Date</u>
BLUE GROUP					
	Troitsa 1	16	4329	21 Oct. 81	21 Oct. 90
	Troitsa 2	16	4366	13 Nov. 81	13 Nov. 90
	Twisted Knee	20	4363	13 Nov. 81	13 Nov. 90
	P.S.	20	4364	13 Nov. 81	13 Nov. 92
	Sue	20	4769	24 Sep. 82	24 Sep. 84
GREEN GROUP					
	Whitesail	20	4365	13 Nov. 81	13 Nov. 92
	Barb	20	4770	24 Sep. 82	24 Sep. 84
	Gram 1	8	5051	28 Mar. 83	28 Mar. 86
	Gram 2	20	5052	28 Mar. 83	28 Mar. 86
	Gram 3	20	5053	28 Mar. 83	28 Mar. 86
	Gram 4	8	5489	8 July 86	8 July 86
ORANGE GROUP					
	Wind Tunnel	16	4362	13 Nov. 81	13 Nov. 92*
	Cummins South	16	4569	22 Apr. 82	22 Apr. 93*
	Cummins North	16	4570	22 Apr. 82	22 Apr. 93*
	Jesse	16	4571	22 Apr. 82	22 Apr. 93*

*After application of work detailed in this report.

Property History

A group of six claims were staked on behalf of Union Carbide Canada Ltd. in late 1981. Union Carbide subsequently staked an additional five claims during 1982. The title was transferred to Canamax Resources Inc. in early 1983 and Canamax staked a further four claims.

During the 1982 field season Union Carbide carried out mapping at a scale of 1:10,000, and preliminary rock, stream sediment and soil geochemical sampling on nine of the then existing claims. This work is detailed in an assessment report -- "Geological and Geochemical Survey of the Troitsa Peak (North) and Troitsa Peak (South) Claim Groups, Omineca Mining Division, British Columbia" by N.G. Cawthorn, submitted in December, 1982.

There is no record of any previous work on the claims area, although a few old exploration pits were encountered during the course of detailed exploration in the area described in this report.

Local Geology

The Cummins Creek area investigated in this assessment report is underlain predominantly by green andesitic flows and lapilli tuffs of Lower Jurassic age. Locally these are intruded by younger feldspar porphyritic diorite dykes and plugs. In the northern part of the grid area the volcanics are cut by several quartz feldspar porphyry dykes. Quartz veins up to 1.5 m wide and 150 m long, and with variable trends from northwest to northeast, occur within the volcanics.

GEOCHEMISTRY

General Statement

A total of 1332 soil samples were collected at 25 m intervals on 29 parallel southwesterly trending lines 100 m apart. The lines are up to 1.4 km in length for a total of 32.3 line km. Soils were collected using a mattock from a depth of 20 cm and samples were collected from "B" horizon soils.

All the samples were submitted to Rossbacher Laboratory, Burnaby, B.C. and analysed geochemically for Au, Ag, Pb, Zn, Cu and Mo. Analytical procedures and results are detailed in Appendix III. Sample locations with results for Au and Ag are shown in Figures 3a and 3b; and with results for Pb, Zn, Cu and Mo in Figures 4a and 4b.

Results and Interpretation

Rigorous statistical methods have not been used to evaluate the results. However, data from another geochemical grid on the property (the "Moraine" grid) and described in a previous assessment report (see "1983 Geochemical and Geological Surveys, Assessment Report, Troitsa Peak Property" by N.G. Cawthorn, dated 16 November 1983) indicated that the anomalous and highly anomalous thresholds tabulated below are appropriate for the property as a whole (the Peak Values listed are from the "Cummins Creek" Grid).

	<u>Anomalous Threshold</u>	<u>Highly Anomalous</u>	<u>Peak Value</u>
Au	20 ppb	100 +	200
Ag	0.8 ppm	2.0 +	7.4
Pb	100 ppm	500 +	1,420
Zn	200 ppm	500 +	660
Cu	100 ppm	200 +	1,000
Mo	5 ppm	10 +	58

To enable direct comparison between the two grids the same anomalous thresholds have been applied in interpretation of the Cummins Creek Grid. It should be noted however that there are some differences in the geochemical response between soils of the two grids. In particular, lead values are much lower in soils on the Cummins Creek Grid, where only two samples contained more than the anomalous threshold of 100 ppm Pb. For the Cummins

Creek Grid, soil samples containing over 25 ppm Pb can be considered to have elevated lead contents.

Examination of the data reveals that many of the anomalous samples for all elements occur as low-order singleton, or at most two sample, anomalies. These are thought to be of little economic significance and have been disregarded in interpretation of the data unless the analytical values are highly anomalous. Contouring of the data for individual elements is found to be of little assistance in interpretation. Rather, anomalous zones have been defined within which many, if not all, of a group of samples are seen to be anomalous in one, or several, elements. These anomalous zones are identified by letter on the geochemical maps and are described below:

Anomaly A is located close to Cummins Creek between lines 20+00N and 25+00N. Most samples are anomalous in silver (up to 3.0 ppm Ag) and several of the samples are also anomalous in gold, copper, molybdenum and one sample is anomalous in lead. This zone is closely associated with two quartz veins up to 1.5 m wide and 150 m long. Locally the quartz veins contain pyrite, galena, sphalerite, chalcopyrite and argentite giving rise to the anomalous values. The anomalous zone indicates little extension of these veins beyond their exposed extent, although a group of samples on line 20+00N at 3+00 to 3+50W may indicate some south-southeasterly extension of a vein exposed in Cummins Creek at 21+50N.

Anomaly B is a group of samples most of which are highly anomalous in copper - up to 720 ppm Cu - but are not anomalous in any other element. This appears to be related to an area of outcrop of dark green andesite and probably represents a somewhat elevated copper content of the andesite. No copper mineralization has been observed in the locality.

Anomaly C is a group of four samples on line 25+00N at 4+50 to 5+50E which are anomalous in silver (maximum 1.4 ppm Ag) but not in other elements. This is probably related to narrow (5-10 cm wide) quartz veins observed in andesite at this locality.

Anomaly D is a single sample anomaly on line 20+00N at 2+25E. The sample at this locality (WSS252) contained 200 ppb Au - the highest value obtained from this grid - but was not anomalous in other elements. This site was resampled (WNS704) but the anomalous gold content was not confirmed -

the sample contained only 10 ppb Au. The resample, however, was extremely anomalous in lead (1420 ppm Pb) as well as silver (6.0 ppm Ag) and copper (150 ppm Cu). A group of closely spaced (5-10 m) soil samples in the vicinity were not anomalous, and neither was a rock chip from nearby andesite outcrop. A northerly-trending shear zone with associated quartz veinlets is exposed along a creek 150 to 300 m due north of this sample locality, grab samples of which are anomalous in gold and silver. Anomaly D probably represents similar spotty mineralization on an extension of this fault.

Anomaly E is a group of samples on lines 17+00N and 18+00N between 1+25E and 3+50E which are typically anomalous in silver (up to 1.6 ppm Ag) but not in other elements. This locality has not been investigated in detail and the source of the anomaly is not known. A quartz porphyry dyke is exposed in the creek immediately west of here, and a grab sample of the dyke was slightly anomalous in silver. The anomaly may represent an extension of the quartz porphyry dyke.

Anomaly F is a group of samples at the extreme western end of lines 20+00N and 19+00N which are anomalous in silver (up to 3.0 ppm Ag) and locally anomalous in molybdenum. Prospecting in this area located several float blocks, up to 45 cm in size, of vein quartz which are anomalous in silver, lead and molybdenum (but not gold).

Anomaly G is a group of scattered samples in the western parts of lines 17+00N and 16+00N which are anomalous in silver (up to 1.8 ppm Ag) and gold (up to 90 ppb Au). This locality has been partially prospected and several float blocks, up to 50 cm in size, of vein quartz were found which contain patches of pyrite, chalcopyrite, galena, sphalerite and argentite. Selected grab samples of this material are highly anomalous in gold, silver and base metals. A pair of samples on line 17+00N at 3+75 and 4+00W are anomalous in gold (70 ppb and 90 ppb Au). This part of the anomalous zone has not been prospected. As the mineralized quartz float was found 100 to 150 m east and downslope of these samples, the area should be further prospected.

Anomaly H is a group of three samples on line 15+00N at Cummins Creek which are highly anomalous in copper, anomalous in zinc, and contain elevated lead contents. The samples are not anomalous in precious metals.

A float block of quartz containing patchy galena, sphalerite, chalcopyrite, and argentite has been found in Cummins Creek at this locality. Selected grab samples of this float boulder have yielded assays of up to 1.34 oz/ton Au and 293 oz/ton Ag (1982 sample PS129R). In view of the presence of this float the anomalous locality should be further prospected.

Anomaly I is a 500 m long zone extending from the western end of line 14+00N to line 11+00N at 1+50E. The central part of the zone is anomalous in silver (up to 1.8 ppm Ag) associated with a broader area highly anomalous in copper (up to 1,000 ppm Cu) and molybdenum (up to 37 ppm Mo). Several samples on line 14+00N are anomalous in gold (up to 100 ppb Au) and a couple of samples on line 12+00N are anomalous in zinc (up to 660 ppm Zn). Several samples also have elevated lead contents. This extensive multi-element anomaly is closely associated with, and clearly related to, an east-northeasterly trending feldspar quartz porphyry dyke. Disseminated pyrite and minor chalcopyrite occur in the dyke, and trace amounts of sphalerite have been seen in quartz veinlets in the dyke. Up to 3% pyrite is developed in andesite adjacent to the dyke. The gold values appear to be associated with the pyrite. Although the anomaly is extensive (and open to the west) and the dyke can be traced for over a kilometre the associated precious metal mineralization is not believed to have any economic potential.


Anomaly J is a group of samples on lines 8+00N and 7+00N from 2+25E to 3+50E which are anomalous in silver (up to 1.6 ppm Ag) but not in other elements. The area is underlain by andesite but the anomalous locality has not yet been prospected and the source of the anomaly is not known.

Anomaly K is a single sample anomaly on line 3+00N at 1+75E. This singleton anomaly is significant in that it is the highest silver value (7.4 ppm Ag) recorded for this grid. The source of this anomaly is not known and the locality should be prospected and resampled.

Discussion

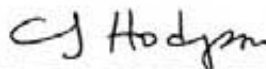
The soil geochemical data have served to delineate a number of areas with anomalous Ag, Au, Pb, Zn, Cu and Mo. Several of the anomalies, in particular anomalies A and I, are associated with known showings. Prospecting has revealed the presence of anomalous quartz float associated with

several of the anomalous zones, in particular anomalies F, G and H, and further prospecting and sampling of these areas should be carried out to locate the source of the float. Several of the lesser anomalies (anomalies E, J and K) have not been investigated and should be resampled and prospected to confirm and determine their source.



N. G. Cawthorn

Endorsed by:



C. J. Hodgson

APPENDIX I

STATEMENT OF COSTS

Statement of Costs

Troitsa Peak Property - Orange Group

Summary of Work - Geochemical Survey, Topographic Mapping

Period of Work - June 13-23, 25-27, 30
July 1-4, 7-9, 17
August 9, 1983

Personnel Employed

B.E. Goad-601-535 Thurlow St. Vancouver, B.C. Staff Geologist; June 19, 20, 23, 26, July 17 5 days @ \$145.46/day	727.30
C.J. Hodgson-601-535 Thurlow St. Vancouver, B.C. Chief Geologist, June 22 1 day @ \$240.00/day	240.00
N.G. Cawthorn-9627 154th St. Surrey, B.C. Contract Geologist, June 20, 23, 25, 26, 30 5 days @ \$124.27/day	621.35
A. Smallwood-1754 Frances St. Vancouver, B.C. Geologic Assistant, June 18-22, 26, 27, 30, July 4, 7, 8 11 days @ \$97.64/day	1074.04
A. Neill-45789 Victoria St. W., Chilliwack, B.C. Assistant, June 27 1 day @ \$72.98/day	72.98
C. Poloni-5502 8B Ave. Delta, B.C. Assistant, June 18-21, 23, 25, 26, 30, July 1-4, 7, 8 14 days @ \$68.04	952.56
G. Halvorson-Box 2844 Smithers, B.C. Soil Sampler, July 7, 9 2 days @ \$57.69/day	115.38
D. Kamiya-965 Plymouth Dr., North Vancouver, B.C. Soil Sampler, July 1-4, 7-9, August 9 8 days @ \$57.69/day	461.52
<u>Board</u> - 46 man days @ \$30/day	1380.00
 <u>Geochemical Analyses</u> - Rossbacher Laboratory Ltd. 2225 S. Springer Ave. Burnaby, B.C.	
Invoice Nos. 3163, 3183, 3197, 3224 1332 soil samples analysed for Au, Ag, Pb, Zn, Cu, Mo @ \$7.90	10,522.80

Page Two
Statement of Costs

Transportation - Canwest Aviation Ltd.
Okotoks, Alberta

Invoice Nos. 3571, 3577, 3576, 3624, 3682

Helicopter Access: 7.5 hrs @ \$375/hr + \$80/hr fuel	3412.50
16.5 hrs @ \$285/h4 + \$30/hr fuel	5197.50

Topographic Map Preparation - Pacific Survey Corp.
Vancouver, B.C.

Scribing of base map	507.94
----------------------	--------

<u>Report Preparation and Drafting</u>	<u>1500.00</u>
--	----------------

TOTAL	<u>\$26,785.87</u>
-------	--------------------

Work To Be Applied:

Two years' assessment is to be applied to the following claims
of the Orange group:

Wind Tunnel
Jesse
Cummins North
Cummins South

APPENDIX II

STATEMENT OF QUALIFICATIONS

STATEMENT OF QUALIFICATIONS

NAME N.G. Cawthorn

ADDRESS 9627 - 154 Street,
Surrey, B.C.
V3R 4J4

EDUCATION M. Sc. Geology, University of British Columbia
M. Sc. Thesis: "Geology and Petrology of the
Troitsa Lake Property, Whitesail Lake Map Area,
B.C.

EXPERIENCE 1968-1970 - University of Aberdeen, Scotland -
(Winters) Teaching Assistant
1969 - Institute of Geological Sciences, U.K. -
(Summer) Field Assistant
1970-1973 - University of British Columbia -
(Winters) Teaching Assistant
1970 - Derry, Michener & Booth - Geological Assistant
(Summer)
1971 - Cerro Mining Co. of Canada Ltd. - Field
(Summer) Geologist
1972 - Canada Tungsten Mining Corp. Ltd.
(Summer)
1973 - Union Carbide Exploration Corporation -
(Summer) Field Geologist
1973-1975 - Canada Tungsten Mining Corp. Ltd. -
Mine Geologist
1975-1978 - Union Carbide Exploration Corp. -
Project Geologist
1980 - Union Carbide Exploration Corp. -
(Summer) Geologist
1981 - 1982 - Union Carbide Exploration Corp.
Project Geologist
1983 - Canamax Resources Inc. - Geologist

STATEMENT OF QUALIFICATIONS

NAME	B.E. Goad
EDUCATION	BSc(Hon) - 1976 - Geology University of Western Ontario, London, Ontario
EXPERIENCE	Geologist - Centre for Precambrian Studies University of Manitoba 1976-1979 Geologist - Dupont of Canada Ltd. - 1979 Geologist - AMAX of Canada Limited 1980 - Present

STATEMENT OF QUALIFICATIONS

NAME	G.P. Halvorson
ADDRESS	Box 2844, Smithers, B.C. VOJ 2N0
EDUCATION	Finished 11th grade will start 12th grade in September, 1983 Bulkley Valley Christian Highschool Smithers, B.C.
EXPERIENCE	1983 summer - Canamax Resources Inc. Field Assistant

STATEMENT OF QUALIFICATIONS

NAME	David H. Kamiya
ADDRESS	965 Plymouth Dr. North Vancouver, B.C. V7H 2H9
EDUCATION	Completed High School - 1981 1981 - 1983 Capilano College - accounting
EXPERIENCE	Summer 1983 - Canamax Resources Inc. - Field Assistant

STATEMENT OF QUALIFICATIONS

NAME Allison Neill

ADDRESS 2636 Turner Street,
Vancouver, B.C.
V5Z 2G2

EDUCATION 1st Year Simon Fraser University - communications
and geography

EXPERIENCE 1981 - Cordilleran Engineering
1982 - AMAX Minerals Exploration
1983 - Canamax Resources Inc.

STATEMENT OF QUALIFICATIONS

NAME	C.R. Poloni
ADDRESS	5502 8B Avenue, Delta, B.C. V4M 1V6
EDUCATION	Grade 12
EXPERIENCE	August 1980 - John R. Poloni & Associates Geological Assistant Summer 1981 - Union Carbide Exploration Ltd. Geological Assistant Summer 1982 - Union Carbide Exploration Ltd. Geological Assistant Nov., Dec., 1982, - John R. Poloni & Associates Geological Assistant Jan., 1983 Summer 1983 - Canamax Resources Inc. Geological Assistant

STATEMENT OF QUALIFICATIONS

NAME	A.C. Smallwood
ADDRESS	1754 Frances Street, Vancouver, B.C. V5L 1Z6
EDUCATION	3rd year standing at Simon Fraser University
EXPERIENCE	1977 Newmont Mining - Field Assistant 1978 AMAX Minerals - Field Assistant 1979 AMAX Minerals - Field Assistant 1980 AMAX of Canada Limited - Field Assistant 1981 AMAX of Canada Limited - Field Assistant 1982 AMAX of Canada Limited - Field Assistant 1983 Canamax Resources Inc. - Field Assistant

APPENDIX III

ANALYTICAL METHODS AND RESULTS

Certificate of Analysis,
Rossbacher Laboratory (attached)

Rossbacher Laboratory

GEOCHEMICAL ANALYSTS & ASSAYERS

2225 S. SPRINGER AVE.,
BURNABY, B. C.
CANADA
TELEPHONE: 299-6910
AREA CODE: 604

Jan. 1982

(1)

GEOCHEMICAL ANALYTICAL METHODS CURRENTLY IN USE AT ROSSBACHER LABORATORY LTD.

A. SAMPLE PREPARATION

1. *Geochem. Soil and Silt:* Samples are dried, and sifted to minus 80 Mesh, through stainless steel, or nylon screens.
2. *Geochem. Rock:* Samples are dried, crushed to minus $\frac{1}{2}$ inch, split, and pulverized to minus 100 mesh.

B. METHODS OF ANALYSIS

1. *Multi element:* (Mo, Cu, Ni, Co, Mn, Fe, Ag, Zn, Pb, Cd):
0.5 Gram sample is digested for four hours with a 15:85 mixture of Nitric-Perchloric acid.
The resulting extract is analyzed by Atomic Absorption spectroscopy, using Background Correction where appropriate.
2. *Antimony:*
0.50 Gram sample is fused with Ammonium Iodide and dissolved.
The resulting solution is extracted into TOPO/MIBK and analyzed by Atomic Absorption spectroscopy.
3. *Arsenic:*
0.25 Gram sample is digested with Nitric-Perchloric acid.
Arsenic from the solution is converted to arsine, which in turn reacts with silver D.D.C. The resulting solution is analyzed by colorimetry.
4. *Barium:*
0.50 Gram sample is repeatedly digested with HClO_4 , HNO_3 , and HF.
The solution is analyzed by Atomic Absorption spectroscopy.
5. *Biogeochemical:*
Samples are dried, and ashed at 550°C . and the resulting ash analyzed as in *1, multielement analysis.
6. *Bismuth:*
0.50 Gram sample is digested with Nitric acid. The solution is analyzed by Atomic Absorption spectroscopy.
7. *Chromium:*
0.25 Gram sample is fused with Sodium Peroxide. The solution is analyzed by Atomic Absorption spectroscopy.

Rossbacher Laboratory

GEOCHEMICAL ANALYSTS & ASSAYERS

2225 S. SPRINGER AVE.,
BURNABY, B. C.
CANADA
TELEPHONE: 299-6910
AREA CODE: 604

(2)

METHOD OF ANALYSIS (CONT.)

8. *Fluorine:* 0.50 Gram sample is fused with a Carbonate Flux, and dissolved.
The resulting solution is analyzed for Fluorine by use of an Ion Selective Electrode.
9. *Gold:* 10.0 Gram sample is roasted at 550°C. and dissolved in Aqua Regia. The resulting solution is subjected to a Methylisobutyl Ketone extraction, which extract is analyzed for Gold using Atomic Absorption spectroscopy.
10. *Mercury:* 1.00 Gram sample is digested with Nitric and Sulfuric acids. The solution is analyzed by Atomic Absorption spectroscopy, using a cold vapor generation technique.
11. *Partial Extraction and Fe/Mn oxides:* 0.50 Gram sample is extracted using one of the following: Hot or cold 0.5 N. HCL, 2.5% E.D.T.A., Ammonium Citrate, or other selected organic acids. The solution is analyzed by use of Atomic Absorption spectroscopy.
12. *pH:* An aqueous suspension of soil, or silt is prepared, and its pH is measured by use of a pH meter.
13. *Rapid Silicate Analysis:* 0.10 Gram sample is fused with Lithium Metaborate, and dissolved in HNO₃.
The solution is analyzed by Atomic Absorption for SiO₂, Al₂O₃, Fe₂O₃, MgO, CaO, Na₂O, K₂O, TiO₂, P₂O₅, and MnO.
14. *Tin:* 0.50 Gram sample is sublimated by fusion with Ammonium Iodide, and dissolved.
The resulting solution is extracted into TOPO/MIBK and analyzed by Atomic Absorption spectroscopy.
15. *Tungsten:* 1.00 Gram sample is sintered with a carbonate flux, and dissolved.
The resulting extract is analyzed colorimetrically, after reduction with Stannous Chloride, by use of Potassium Thiocyanate.

Rossbacher Laboratory Ltd.

GEOCHEMICAL ANALYSTS & ASSAYERS

CERTIFICATE OF ANALYSIS

TO: AMAX MINERALS EXPLORATION
601 - 535 THURLOW ST.
VANCOUVER, B.C.

2225 S. SPRINGER AVE.,
BURNABY, B.C.
CANADA
TELEPHONE: 299-8910

CERTIFICATE NO. 83223-6
INVOICE NO.
DATE ANALYSED 83/07/15
PROJECT 57037

No.	Sample	pH	Mo	Cu	Ag	Zn	Pb	As				No.
01	83WAS 1		2	36	0.2	108	8	10				01
02	2		4	60	0.2	80	16	10				02
03	3		2	50	0.2	126	6	10				03
04	4		2	38	0.2	100	10	10				04
05	5		2	92	0.2	80	8	10				05
06	6		2	32	0.2	80	6	10				06
07	7		2	42	0.2	82	8	10				07
08	8		1	28	0.2	94	6	10				08
09	9		1	24	0.2	106	6	10				09
10	83WAS 10		1	32	0.2	80	8	10				10
11	11		1	26	0.2	98	6	10				11
12	12		1	36	0.2	132	8	10				12
13	13		1	26	0.2	150	10	10				13
14	14		1	46	0.2	66	6	10				14
15	15		1	30	0.2	98	8	10				15
16	16		1	18	0.2	74	8	10				16
17	17		1	20	0.2	132	8	10				17
18	18		1	32	0.2	92	14	10				18
19	83WAS 19		1	28	0.2	90	14	10				19
20	STDA		6	24	0.2	34	18	-				20
21	83WAS 20		1	32	0.2	114	12	10				21
22	21		1	28	0.2	100	10	10				22
23	22		1	24	0.2	94	8	10				23
24	23		1	36	0.2	96	8	10				24
25	24		1	26	0.2	72	6	10				25
26	25		1	36	0.2	120	4	10				26
27	26		1	38	0.2	100	6	10				27
28	27		1	36	0.2	98	6	10				28
29	28		4	40	0.2	98	8	10				29
30	83WAS 29		3	34	0.2	94	10	10				30
31	30		7	44	0.4	122	10	10				31
32	31		8	48	0.2	100	12	10				32
33	32		5	46	0.2	132	8	10				33
34	33		7	66	0.2	102	12	10				34
35	34		7	72	0.2	112	14	10				35
36	35		6	40	0.2	96	8	10				36
37	36		6	56	0.6	78	8	10				37
38	37		6	40	0.6	92	6	10				38
39	83WAS 38		8	36	0.2	100	8	10				39
40	STDA		6	24	0.2	36	18	-				40

VALUES IN PPM UNLESS NOTED OTHERWISE.

Certified by

[Signature]

Rossbacher Laboratory Ltd.

GEOCHEMICAL ANALYSTS & ASSAYERS

CERTIFICATE OF ANALYSIS

TO: AMAX MINERALS EXPLORATION
601 - 535 THURLOW ST.
VANCOUVER, B.C.

2225 S. SPRINGER AVE.,
BURNABY, B.C.
CANADA
TELEPHONE: 299-8910

CERTIFICATE NO. 83223-7
INVOICE NO.
DATE ANALYSED 83/07/15
PROJECT 57037

No.	Sample	pH	Mo	Cu	Ag	Zn	Pb	As				No.
01	83WAS 39		6	32	0.2	94	10	10				01
02	40		1	28	0.2	88	8	10				02
03	41		1	20	0.4	78	8	10				03
04	42		2	20	0.2	108	4	10				04
05	43		2	28	0.2	80	8	10				05
06	44		1	20	0.2	56	8	10				06
07	45		3	34	0.2	102	8	10				07
08	46		1	46	0.2	52	4	10				08
09	47		1	38	0.2	60	6	10				09
10	83WAS 48		1	84	0.2	66	2	10				10
11	49		3	46	0.2	80	8	10				11
12	50		4	43	0.2	74	8	10				12
13	51		4	76	0.4	114	12	10				13
14	52		4	24	0.4	84	4	10				14
15	53		2	26	0.2	80	12	10				15
16	54		2	68	0.2	64	28	10				16
17	55		4	182	0.4	84	14	10				17
18	56		1	26	0.2	84	12	10				18
19	83WAS 57		3	82	0.4	84	22	10				19
20	STDA		16	106	0.8	184	80	10				20
21	83WAS 58		2	30	0.2	116	10	10				21
22	59		3	32	0.2	92	10	10				22
23	60		3	36	0.2	74	10	10				23
24	61		3	36	0.2	122	8	10				24
25	62		4	42	0.2	90	8	10				25
26	63		1	34	0.2	86	6	10				26
27	64		1	32	0.2	100	6	10				27
28	65		1	30	0.4	68	6	10				28
29	66		6	30	0.4	78	12	10				29
30	83WAS 67		3	60	0.2	112	28	10				30
31	68		3	46	0.2	104	16	10				31
32	69		1	30	0.2	138	6	10				32
33	70		1	26	0.2	86	6	10				33
34	71		4	46	0.2	88	4	10				34
35	72		5	68	0.4	116	20	10				35
36	73		3	92	0.2	104	6	10				36
37	74		3	34	0.2	80	8	10				37
38	75		2	30	0.2	76	6	10				38
39	83WAS 76		2	32	0.2	88	10	10				39
40	STDA		17	180	0.8	114	80	10				40

VALUES IN PPM UNLESS NOTED OTHERWISE.

Certified by

[Signature]

Rossbacher Laboratory Ltd.

GEOCHEMICAL ANALYSTS & ASSAYERS

CERTIFICATE OF ANALYSIS

TO: AMAX MINERALS EXPLORATION
601 - 535 THURLOW ST.
VANCOUVER, B.C.

2225 S. SPRINGER AVE.,
BURNABY, B.C.
CANADA
TELEPHONE: 299-8810

CERTIFICATE NO. 83223-8
INVOICE NO.
DATE ANALYSED 83/07/11
PROJECT 57037

No.	Sample	pH	Mo	Cu	Ag	Zn	Pb	As					No.
01	83WAS 77		2	48	0.2	88	8	10					01
02	78		1	20	0.2	104	4	12					02
03	79		2	62	0.2	74	4	12					03
04	80		2	34	0.2	86	4	12					04
05	81		3	48	0.2	68	10	12					05
06	82		4	46	0.2	76	12	12					06
07	83		1	24	0.2	98	10	12					07
08	84		2	26	0.2	96	4	12					08
09	85		1	18	0.2	64	4	12					09
10	83WAS 86		3	8	0.2	38	8	12					10
11	TD E		2	76	0.2	142	14	12					11
12													12
13													13
14													14
15													15
16													16
17													17
18													18
19													19
20													20
21													21
22													22
23													23
24													24
25													25
26													26
27													27
28													28
29													29
30													30
31													31
32													32
33													33
34													34
35													35
36													36
37													37
38													38
39													39
40													40

Certified by *D. Rossbacher*

VALUES IN PPM UNLESS NOTED OTHERWISE.

Rossbacher Laboratory Ltd.

GEOCHEMICAL ANALYSTS & ASSAYERS

CERTIFICATE OF ANALYSIS

TO: CANAMAX RESOURCES INC.
601 - 535 THURLOW ST.
VANCOUVER, B.C. V6E 3L6

2225 S. SPRINGER AVE.,
BURNABY, B.C.
CANADA
TELEPHONE: 299-8810

CERTIFICATE NO. 83255-7
INVOICE NO.
DATE ANALYSED 83/07/16
PROJECT 57037

No.	Sample	pH	Mo	Cu	Ag	Zn	Pb	As					No.
01	83WASS00		3	26	0.2	126	10	12					01
02	5001		1	24	0.2	80	10	12					02
03	5002		3	42	0.4	106	20	12					03
04	5003		2	20	0.4	176	10	12					04
05	5004		4	50	0.8	102	10	12					05
06	5005		4	48	0.6	84	8	12					06
07	5006		4	38	0.8	48	4	12					07
08	5007		1	46	0.8	26	6	12					08
09	5008		2	24	0.2	40	2	12					09
10	83WASS09		2	30	0.2	94	8	12					10
11	5010		2	44	0.2	100	8	12					11
12	5011		1	28	0.2	80	8	12					12
13	5012		1	42	0.2	68	20	12					13
14	5013		2	52	0.2	102	6	12					14
15	5014		2	86	0.2	78	8	12					15
16	5015		1	74	0.2	160	8	12					16
17	5016		1	66	0.2	100	8	12					17
18	5017		1	34	0.2	102	8	12					18
19	83WASS08		1	28	0.2	160	8	12					19
20	TD E		3	74	0.2	144	20	12					20
21	83WASS09		1	40	0.2	160	12	12					21
22	5020		1	28	0.2	160	12	12					22
23	5021		1	80	0.2	96	12	12					23
24	5022		1	42	0.2	104	12	12					24
25	5023		1	46	0.2	128	14	12					25
26	5024		2	76	0.2	142	22	12					26
27	5025		3	52	0.2	154	10	12					27
28	5026		2	34	0.2	106	14	12					28
29	5027		2	32	0.2	112	12	12					29
30	5028		2	34	0.6	98	16	12					30
31	5029		2	30	0.2	72	14	12					31
32	5030		2	26	0.4	106	12	12					32
33	TD E		4	72	0.2	144	16	12					33
34													34
35													35
36													36
37													37
38													38
39													39
40													40

Certified by *D. Rossbacher*

VALUES IN PPM UNLESS NOTED OTHERWISE.

Rossbacher Laboratory Ltd.

GEOCHEMICAL ANALYSTS & ASSAYERS

2725 S. SPRINGER AVE.
BURNABY, B.C.
CANADA
TELEPHONE: 299-0010

CERTIFICATE NO. 83261-3

INVOICE NO.

DATE ANALYSED 8/10/82

PROJECT 57037

CERTIFICATE OF ANALYSIS

TO: CANAMAX RESOURCES INC.
601 - 535 THURLOW ST.
VANCOUVER, B.C. V6E 3L6

No.	Sample	PH	Na	Cu	Ag	Zn	Pb	Au				No.
01	B3 WAS 500	3	22	0.2	62	12	10					01
02	5002	43	20	0.2	70	-8	1					02
03	5003	1	22	0.4	52	10	10					03
04	5004	1	12	0.2	34	8	10					04
05	5005	1	22	0.4	68	8	10					05
06	5006	5	100	0.8	104	8	10					06
07	5007	24	130	1.2	78	6	10					07
08	5008	1	34	0.2	94	10	10					08
09	5009	1	34	0.6	80	12	10					09
10	B3 WAS 5010	1	32	0.4	76	10	10					10
11	5011	1	20	0.2	62	10	10					11
12	5012	1	24	0.2	64	6	10					12
13	5013	1	26	0.4	40	8	10					13
14	5014	2	34	0.2	54	6	10					14
15	5015	1	60	0.2	272	6	10					15
16	5016	1	24	0.2	82	10	12					16
17	5017	1	26	0.2	120	12	10					17
18	5018	1	24	0.2	60	10	10					18
19	B3 WAS 5019	1	20	0.2	54	14	10					19
20	STD B	24	132	0.6	116	96	-					20
21	B3 WAS 5020	2	36	0.2	30	12	10					21
22	5021	1	32	0.2	90	10	10					22
23	5022	1	20	0.2	40	6	10					23
24	5023	1	18	0.2	42	14	10					24
25	5024	1	20	0.2	48	8	10					25
26	5025	2	30	0.2	52	6	10					26
27	5026	1	26	0.2	34	6	10					27
28	5027	7	22	0.2	58	10	10					28
29	5028	4	36	0.2	74	10	10					29
30	B3 WAS 5029	1	22	0.2	68	4	10					30
31	5030	1	24	0.2	108	10	70					31
32	5061	1	14	0.2	52	10	90					32
33	5062	1	18	0.2	62	12	10					33
34	5063											34
35	5064	1	18	0.2	46	10	10					35
36	5065	1	20	0.2	68	8	10					36
37	5066	1	12	0.2	32	8	10					37
38	5067	1	14	0.2	48	8	10					38
39	B3 WAS 5068	3	40	0.2	156	30	10					39
40	STD C	24	134	0.8	120	24	-					40

VALUES IN PPM UNLESS NOTED OTHERWISE

Certified by *R. Rossbacher*

Rossbacher Laboratory Ltd.

GEOCHEMICAL ANALYSTS & ASSAYERS

2725 S. SPRINGER AVE.
BURNABY, B.C.
CANADA
TELEPHONE: 299-0010

CERTIFICATE NO. 83261-4

INVOICE NO.

DATE ANALYSED AUG 1/82

PROJECT 57037

CERTIFICATE OF ANALYSIS

TO: CANAMAX RESOURCES INC.
601 - 535 THURLOW ST.
VANCOUVER, B.C. V6E 3L6

No.	Sample	PH	Na	Cu	Ag	Zn	Pb	Au				No.
01	B3 WAS 5069	3	24	0.2	22	18	10					01
02	5070	2	20	0.2	70	16	10					02
03	5071	2	30	0.2	150	10	10					03
04	5072	3	98	1.0	140	18	10					04
05	5073	4	28	0.2	78	10	10					05
06	5074	2	20	0.2	24	5	10					06
07	5075	2	28	0.2	26	6	10					07
08	5076	2	40	0.2	110	7	10					08
09	5077	3	46	0.8	78	7	10					09
10	B3 WAS 5078	2	20	0.2	34	5	10					10
11	5079	2	40	0.2	108	12	10					11
12	5080	4	32	0.2	124	3	10					12
13	5081	3	36	0.2	130	9	10					13
14	5082	2	46	0.2	108	10	10					14
15	5083	1	30	0.2	178	6	10					15
16	5084	2	26	0.2	100	5	10					16
17	5085	2	32	0.2	126	5	10					17
18	5086	1	30	0.2	170	6	10					18
19	B3 WAS 5087	2	40	0.2	126	8	10					19
20	STD C	24	132	0.6	122	80	-					20
21	B3 WAS 5088	3	66	0.2	124	5	10					21
22	5089	3	32	0.2	126	4	10					22
23	5090	3	26	0.2	156	10	10					23
24	5091	3	34	0.4	130	7	10					24
25	5092	3	44	1.0	116	9	10					25
26	5093	2	40	0.6	82	10	10					26
27	5094	2	60	1.6	126	9	10					27
28	5095	1	36	0.6	102	8	10					28
29	5096	2	36	0.6	98	9	10					29
30	B3 WAS 5097	2	38	0.2	106	4	10					30
31	5098	1	58	0.2	104	14	10					31
32	5099	1	26	0.2	66	8	10					32
33	5100	1	26	0.2	110	8	10					33
34	5101	3	44	0.2	102	7	10					34
35	5102	3	36	1.0	120	8	10					35
36	5103	1	44	0.4	86	8	10					36
37	5104	3	48	0.6	82	18	10					37
38	5105	1	52	0.2	76	7	10					38
39	B3 WAS 5106	1	50	0.2	74	4	10					39
40	STD C	16	158	0.6	162	74	-					40

VALUES IN PPM UNLESS NOTED OTHERWISE

Certified by *R. Rossbacher*

Rossbacher Laboratory Ltd.

GEOCHEMICAL ANALYSTS & ASSAYERS

CERTIFICATE OF ANALYSIS

TO: AMAX MINERALS EXPLORATION
601 - 535 THURLOW ST.
VANCOUVER, B.C.

2725 S. SPRINGER AVE.,
BURNABY, B. C.
CANADA
TELEPHONE: 299-0910

CERTIFICATE NO. 83223-11
INVOICE NO.
DATE ANALYSED 8/10/12
PROJECT 57037

No.	Sample	pH	Mo	Cu	Ag	Zn	Pb	Au					No.
01	83WCS 1		3	320	0.2	116	4	12					01
02	2		1	376	0.4	84	6	12					02
03	3		8	220	0.4	108	2	12					03
04	4		2	210	0.4	98	7	12					04
05	5		2	260	0.4	116	10	12					05
06	6		8	130	0.4	180	6	12					06
07	7		2	76	0.2	92	6	12					07
08	8		2	52	0.4	100	6	12					08
09	9		3	46	0.4	102	6	12					09
10	83WCS 10		6	38	0.4	60	8	12					10
11	11		6	110	0.6	116	28	12					11
12	12		2	236	0.8	70	20	12					12
13	13		3	176	0.6	92	16	12					13
14	14		8	142	0.4	72	10	12					14
15	15		2	42	0.6	100	6	12					15
16	16		2	26	0.6	68	10	12					16
17	17		1	30	0.2	88	12	12					17
18	18		1	36	0.2	116	12	12					18
19	83WCS 19		2	36	0.4	86	14	12					19
20	STD F		3	76	0.2	146	16	-					20
21	83WCS 20		2	30	0.2	100	14	12					21
22	21		1	28	0.8	70	8	12					22
23	22		16	66	1.8	78	50	12					23
24	23		8	30	0.4	88	52	12					24
25	24		2	20	0.2	60	12	12					25
26	25		2	28	0.2	70	50	12					26
27	26		3	18	0.2	76	32	12					27
28	27		2	8	0.2	68	12	12					28
29	28		2	28	0.2	112	12	12					29
30	83WCS 29		3	30	0.2	80	14	12					30
31	30		3	52	0.2	100	14	12					31

Rossbacher Laboratory Ltd.

GEOCHEMICAL ANALYSTS & ASSAYERS

CANAMAX RESOURCES CERTIFICATE OF ANALYSIS

TO: 601 - 535 THURLOW ST.
VANCOUVER, B.C. V6E 3L6
-40 WEST

2725 S. SPRINGER AVE.,
BURNABY, B. C.
CANADA
TELEPHONE: 299-0910

CERTIFICATE NO. 83255-9
INVOICE NO.
DATE ANALYSED 8/10/12
PROJECT 57037

No.	Sample	pH	Mo	Cu	Ag	Zn	Pb	Au					No.
01													01
02	5140		2	62	0.4	118	18	12					02
03	141		1	80	0.2	116	12	12					03
04	147		1	44	0.2	124	8	12					04
05	143		1	280	1.2	120	8	12					05
06	144		1	22	0.2	116	10	12					06
07	145		1	86	0.4	120	8	12					07
08	146		1	92	0.6	102	6	12					08
09	147		2	124	0.2	100	10	12					09
10	83WCS 148												10
11	149		57	144	0.8	128	14	12					11

Rossbacher Laboratory Ltd.

GEOCHEMICAL ANALYSTS & ASSAYERS

CERTIFICATE OF ANALYSIS

TO: AMAX MINERALS EXPLORATION
601 - 535 THURFLOW ST.
VANCOUVER, B.C.

2225 S. SPRINGER AVE.,
BURNABY, B. C.
CANADA
TELEPHONE: 299-0010

CERTIFICATE NO. 83223-1
INVOICE NO.
DATE ANALYSED 83/07/15
PROJECT 57037

No.	Sample	pH	Mo	Cu	Ni	Co	Mn	Fe	Al	Zn	Pb	As	No.
01													01
02	S148		1	228	-	-	-	0.4	78	10	10		02
03	150		1	30	-	-	-	0.6	84	8	10		03
04	51		1	18	-	-	-	0.6	72	8	10		04
05	52		1	34	-	-	-	0.2	100	10	10		05
06	53		1	32	-	-	-	0.2	100	10	10		06
07	54		1	58	-	-	-	0.2	92	12	10		07
08	55		1	36	-	-	-	0.2	88	12	10		08
09	56		1	38	-	-	-	0.2	102	12	10		09
10	83WGS 157		1	26	-	-	-	0.4	58	10	10		10
11	58		7	28	-	-	-	0.4	88	10	10		11
12	59		4	30	-	-	-	0.2	70	8	10		12
13	60		5	22	-	-	-	0.4	122	12	10		13
14	61		2	30	-	-	-	0.4	88	8	10		14
15	62		2	28	-	-	-	0.2	74	6	10		15
16	63		2	46	-	-	-	0.2	112	14	10		16
17	64		2	26	-	-	-	0.2	160	10	10		17
18	65		1	20	-	-	-	0.2	88	8	10		18
19	83WGS 166		1	22	-	-	-	0.2	88	6	10		19
20	STD D		2	118	4	2	70	0.8	3.8	490	98	-	20
21	83WGS 167		2	20	-	-	-	0.2	70	8	10		21
22	68		2	18	-	-	-	0.2	126	6	10		22
23	69		2	36	-	-	-	0.2	82	8	10		23
24	70		1	26	-	-	-	0.2	80	8	10		24
25	71		2	16	-	-	-	0.2	114	6	10		25
26	72		1	12	-	-	-	0.2	98	8	10		26
27	73		1	14	-	-	-	0.2	94	8	10		27
28	74		1	14	-	-	-	0.2	106	6	10		28
29	75		1	16	-	-	-	0.2	116	8	10		29
30	83WGS 176		1	14	-	-	-	0.2	110	6	10		30
31	77		1	42	-	-	-	0.6	88	10	10		31
32	78		1	30	-	-	-	0.2	70	8	10		32
33	79		1	28	-	-	-	0.2	58	6	10		33
34	80		1	30	-	-	-	0.2	74	8	10		34
35	81		1	26	-	-	-	0.2	58	10	10		35
36	T 82		1	50	-	-	-	0.2	68	8	10		36
37	83		1	30	-	-	-	0.2	84	6	10		37
38	84		1	14	-	-	-	0.2	64	8	10		38
39	83WGS 185		1	12	-	-	-	0.2	98	6	10		39
40	STD D		2	124	4	2	70	0.8	4.0	530	102	-	40

VALUES IN PPM UNLESS NOTED OTHERWISE.

Certified by *J. Rossbacher*

Rossbacher Laboratory Ltd.

GEOCHEMICAL ANALYSTS & ASSAYERS

CERTIFICATE OF ANALYSIS

TO: AMAX MINERALS EXPLORATION
601 - 535 THURFLOW ST.
VANCOUVER, B.C.

2225 S. SPRINGER AVE.,
BURNABY, B. C.
CANADA
TELEPHONE: 299-0010

CERTIFICATE NO. 83223-2
INVOICE NO.
DATE ANALYSED 83/07/15
PROJECT 57037

No.	Sample	pH	Mo	Cu	Ag	Zn	Pb	As	No.
01									01
02	83WGS 186		1	18	0.2	150	8	10	02
03	87		1	14	0.2	110	6	10	03
04	88		1	10	0.2	78	4	10	04
05	89		1	14	0.2	62	6	10	05
06	90		1	16	0.2	90	8	10	06
07	91		2	24	0.2	104	10	10	07
08	92		1	16	0.2	72	8	10	08
09	93		1	24	0.2	88	14	10	09
10	94		1	20	0.2	106	10	10	10
11	83WGS 195		1	16	0.2	100	6	10	11
12	96		1	26	0.1	194	12	10	12
13	97		1	24	0.2	116	8	10	13
14	98		1	16	0.2	94	6	10	14
15	99		1	14	0.2	92	6	10	15
16	200		1	10	0.2	60	8	10	16
17	01		1	22	0.2	80	12	10	17
18	02		1	18	0.2	132	8	10	18
19	03		1	18	0.2	120	8	10	19
20	83WGS 204		2	22	0.2	132	10	10	20
21	STD D		2	118	3.6	530	100	-	21
22	83WGS 205		1	14	0.2	130	8	10	22
23	83WGS 206		1	18	0.2	118	8	10	23
24									24
25									25
26									26
27									27
28									28
29									29
30									30
31									31
32									32
33									33
34									34
35									35
36									36
37									37
38									38
39									39
40									40

VALUES IN PPM UNLESS NOTED OTHERWISE.

Certified by *J. Rossbacher*

Rossbacher Laboratory Ltd.

GEOCHEMICAL ANALYSTS & ASSAYERS

2726 E. SPRINGER AVE.
BURNABY, B.C.
CANADA
TELEPHONE: 299-0810

CERTIFICATE OF ANALYSIS

TO: CANAMAX RESOURCES INC.
601 - 535 THURLOW ST.
VANCOUVER, B.C. V6E 3L6

CERTIFICATE NO. 83277-5
INVOICE NO.
DATE ANALYSED 8/3/08/02
PROJECT 57057

No.	Sample	pH	Mo	Co	Ag	Zn	Pb	199 Au	No.
01	23 WGS 255		1	108	0.6	100	8	10	01
02	256		1	38	0.6	92	10	10	02
03	257		1	56	0.2	104	10	10	03
04	258		1	38	0.4	88	8	10	04
05	259		1	46	0.8	66	6	10	05
06	260		1	64	0.6	100	4	10	06
07	261		1	72	0.2	94	6	10	07
08	262		1	50	0.2	104	8	10	08
09	263		1	88	0.4	68	8	10	09
10	23 WGS 264		1	60	0.2	86	8	10	10
11	265		1	58	0.2	90	8	10	11
12	266		2	70	0.2	92	6	10	12
13	267		3	46	0.2	90	14	10	13
14	268		4	38	0.2	100	18	10	14
15	269		1	38	0.4	108	8	10	15
16	270		2	46	0.6	116	10	10	16
17	271		2	38	1.2	98	8	10	17
18	272		2	60	0.2	148	12	10	18
19	23 WGS 273		2	98	0.8	146	38	10	19
20	STD 2		2	74	0.2	150	18	-	20
21	23 WGS 274		1	32	0.4	86	14	10	21
22	275		4	50	0.4	142	76	10	22
23	276		1	46	0.8	82	16	10	23
24	277		1	50	0.8	116	12	10	24
25	278		1	46	0.6	70	6	10	25
26	279		2	40	0.2	100	6	10	26
27	280		2	54	0.4	118	6	10	27
28	281		3	34	0.4	112	10	10	28
29	282		2	38	0.8	78	12	10	29
30	23 WGS 283		4	74	2.4	96	12	10	30
31	284		1	44	0.6	92	10	10	31
32	285		2	30	0.6	72	12	10	32
33	286		1	36	0.8	104	12	10	33
34	287		5	56	0.6	88	10	10	34
35	288		2	28	0.8	76	14	10	35
36	289		3	26	0.2	82	10	10	36
37	STD 2		2	78	0.2	156	18	-	37
38									38
39									39
40									40

Certified by *J. Rossbacher*

VALUES IN PPM UNLESS NOTED OTHERWISE.

Rossbacher Laboratory Ltd.

GEOCHEMICAL ANALYSTS & ASSAYERS

CERTIFICATE OF ANALYSIS

TO: CANAMAX RESOURCES INC.
601 - 535 THURLOW STREET
VANCOUVER, B.C.

220 S. SPRINGER AVE.,
BURNABY, B.C.
CANADA
TELEPHONE: 299-8910

CERTIFICATE NO. 83345-14

INVOICE NO.

DATE ANALYSED Aug, 1983

PROJECT 037

No.	Sample	pH	Mo	Cu	Ag	Zn	Pb	As						No.
								ppb						

Rossbacher Laboratory Ltd.

GEOCHEMICAL ANALYSTS & ASSAYERS

CERTIFICATE OF ANALYSIS

TO: CANAMAX RESOURCES INC.
601 - 535 THURLOW STREET
VANCOUVER, B.C.

220 S. SPRINGER AVE.,
BURNABY, B.C.
CANADA
TELEPHONE: 299-8910

CERTIFICATE NO. 83421-1

INVOICE NO.

DATE ANALYSED SEPT 30/83

PROJECT 57037

No.	Sample	pH	Mo	Cu	Ag	Zn	Pb	As						No.
								ppb						

09	5408		10	490	2.0	142	12							09
10	83421-1 5405		6	180	1.4	114	12							10
11	410		2	04	0.4	116	20							11
12	411		4	170	0.6	124	4							12
13	412		30	196	1.0	108	27							13
14	413		18	284	1.0	106	20							14
15	414		4	102	1.2	107	10							15

31	w/b 406		57	8	0.2	42	4	10						31
32														32
33														33
34														34
35														35
36														36
37														37
38														38
39														39
40														40

VALUES IN PPM, UNLESS NOTED OTHERWISE.

Certified by

P. Rossbacher

31															31
32															32
33															33
34															34
35															35
36															36
37															37
38															38
39															39
40															40

VALUES IN PPM, UNLESS NOTED OTHERWISE.

Certified by

P. Rossbacher

Rossbacher Laboratory Ltd.

GEOCHEMICAL ANALYSTS & ASSAYERS

CERTIFICATE OF ANALYSIS

TO: CANAMAX RESOURCES INC.
601 - 535 THURLOW ST.
VANCOUVER, B.C. V6E 3L6

2225 S. SPRINGER AVE.
BURNABY, B.C.
CANADA
TELEPHONE: 799-0910

CERTIFICATE NO. 93261-6
INVOICE NO.
DATE ANALYSED AUG, 1983
PROJECT 57037

No.	Sample	pH	Mo	Cu	Ag	Zn	Pb	Au			No.
01	83W65 5000		1	32	0.4	74	8	10			01
02	5001		1	22	0.4	70	6	10			02
03	5002		1	10	0.2	42	8	10			03
04	5003		1	12	0.2	50	10	10			04
05	5004		1	42	0.2	84	8	10			05
06	5005		1	20	0.2	76	6	12			06
07	5006		3	36	0.2	74	8	10			07
08	5007		3	38	0.2	78	8	10			08
09	5008		3	38	0.2	76	4	10			09
10	53W65 5009		3	36	0.4	60	4	10			10
11	5010		1	22	0.2	40	6	10			11
12	5011		2	36	0.2	74	8	10			12
13	5012		1	16	0.2	38	8	10			13
14	5013		2	26	0.2	52	8	10			14
15	5014		2	32	0.2	66	6	10			15
16	5015		6	30	0.2	84	8	10			16
17	5016		6	36	0.2	86	8	10			17
18	5017		5	34	0.2	96	8	10			18
19	5018		1	24	0.2	78	6	10			19
20	517 D		1	128	0.8	480	96	-			20
21	83W65 5019		1	30	0.2	94	10	10			21
22	5020		2	50	0.4	104	16	10			22
23	5021		3	34	0.2	116	26	10			23
24	5022		2	42	0.2	100	16	10			24
25	5023		3	24	0.2	78	6	10			25
26	5024		7	26	0.2	112	10	10			26
27	5025		1	18	0.2	110	6	10			27
28	5026		1	20	0.2	50	8	10			28
29	5027		5	22	0.4	74	8	10			29
30	83W65 5028		1	10	0.2	58	4	10			30
31	5029		2	22	0.2	76	10	10			31
32	5030		1	24	0.2	90	12	10			32
33	5031		20	34	0.2	90	18	10			33
34	5032		1	28	0.2	88	12	10			34
35	5033		1	40	0.2	92	14	10			35
36	5034		1	40	0.1	92	32	10			36
37	5035		2	46	0.2	104	16	10			37
38	5036		1	28	0.2	70	10	10			38
39	83W65 5037		1	38	0.2	50	4	10			39
40	517 D		1	128	11.0	480	102	-			40

VALUES IN PPM UNLESS NOTED OTHERWISE

Certified by

P. Rossbacher

Rossbacher Laboratory Ltd.

GEOCHEMICAL ANALYSTS & ASSAYERS

CERTIFICATE OF ANALYSIS

TO: CANAMAX RESOURCES INC.
601 - 535 THURLOW ST.
VANCOUVER, B.C. V6E 3L6

2225 S. SPRINGER AVE.
BURNABY, B.C.
CANADA
TELEPHONE: 799-0910

CERTIFICATE NO. 93261-7
INVOICE NO.
DATE ANALYSED AUG, 1983
PROJECT 57037

No.	Sample	pH	Mo	Cu	Ag	Zn	Pb	Au			No.
01	83W65 5038			32	0.4	118	10	10			01
02	83W65 5039			36	0.6	94	12	10			02
03											03
04											04
05											05
06											06
07											07
08											08
09											09
10											10
11											11
12											12
13											13
14											14
15											15
16											16
17											17
18											18
19											19
20											20
21											21
22											22
23											23
24											24
25											25
26											26
27											27
28											28
29											29
30											30
31											31
32											32
33											33
34											34
35											35
36											36
37											37
38											38
39											39
40											40

VALUES IN PPM UNLESS NOTED OTHERWISE

Certified by

P. Rossbacher

Rossbacher Laboratory Ltd.

GEOCHEMICAL ANALYSTS & ASSAYERS

CERTIFICATE OF ANALYSIS

TO: ANAX MINERALS EXPLORATION
801 - 535 THURLOW ST.
VANCOUVER, B.C.

2225 S. SPRINGER AVE.
BURNABY, B.C.
CANADA
TELEPHONE: 799-8810

CERTIFICATE NO. 83223-12
INVOICE NO.
DATE ANALYSED 8/10/11
PROJECT 57037

No.	Sample	pH	Mo	Cu	Ag	Zn	Pb	Au			No.
01	83WLS 19		2	14	0.4	64	10	12			01
02	19		2	18	0.4	82	8	12			02
03	20		2	18	0.2	80	8	12			03
04	21		1	14	0.2	70	8	12			04
05	22		2	24	0.2	64	6	12			05
06	23		2	14	0.8	80	8	12			06
07	24		1	16	0.2	66	8	12			07
08	25		1	14	0.2	56	4	12			08
09	26		1	26	0.4	70	12	12			09
10	83WLS 27		2	16	0.2	74	10	12			10
11	28		2	16	0.2	82	8	12			11
12	29		1	12	0.2	46	8	12			12
13	30		2	26	0.2	72	8	12			13
14	31		1	12	0.2	60	6	12			14
15	32		1	12	0.2	8	4	12			15
16	33		2	14	0.2	74	6	12			16
17	34		2	16	0.2	80	6	12			17
18	35		1	20	0.4	74	8	12			18
19	83WLS 36		3	24	0.4	88	10	12			19
20	STD E		4	24	0.2	150	18	-			20
21	83WLS 37		1	26	0.4	80	16	12			21
22	38		1	28	0.4	72	8	12			22
23	39		1	16	0.2	84	6	12			23
24	40		1	12	0.2	82	6	12			24
25	41		1	28	0.2	60	8	12			25
26	42		1	16	0.2	62	8	12			26
27	43		1	38	0.2	160	12	12			27
28	44		1	28	0.2	114	20	12			28
29	45		1	22	0.2	82	12	12			29
30	83WLS 46		1	16	0.2	88	8	12			30
31	47		1	26	0.2	180	16	12			31
32	48		1	28	0.2	110	14	12			32
33	49		1	42	0.2	108	14	12			33
34	50		1	34	0.2	120	10	12			34
35	51		2	40	0.2	134	10	12			35
36	52		1	40	0.2	114	6	12			36
37	53		1	34	0.2	116	8	12			37
38	54		1	20	0.2	82	8	12			38
39	83WLS 55		1	32	0.2	80	10	12			39
40	STD E		3	24	0.2	150	18	-			40

VALUES IN PPM UNLESS NOTED OTHERWISE

Certified by

P. Rossbacher

Rossbacher Laboratory Ltd.

GEOCHEMICAL ANALYSTS & ASSAYERS

CERTIFICATE OF ANALYSIS

TO: ANAX MINERALS EXPLORATION
801 - 535 THURLOW ST.
VANCOUVER, B.C.

2225 S. SPRINGER AVE.
BURNABY, B.C.
CANADA
TELEPHONE: 799-8810

CERTIFICATE NO. 83223-9
INVOICE NO.
DATE ANALYSED 8/10/11
PROJECT 57037

No.	Sample	pH	Mo	Cu	Ag	Zn	Pb	Au			No.
01	83WLS 56		2	30	0.2	72	10	12			01
02	57		2	34	0.2	74	8	12			02
03	58		4	28	0.4	70	6	12			03
04	59		3	50	0.4	84	12	12			04
05	60		2	48	0.6	72	12	12			05
06	61		3	60	0.2	102	10	12			06
07	62		2	18	0.2	82	2	12			07
08	63		1	18	0.2	108	4	12			08
09	64		3	26	0.4	164	6	12			09
10	83WLS 65		3	22	0.2	36	12	12			10
11	66		3	26	0.2	70	4	12			11
12	67		3	24	0.2	88	4	12			12
13	68		2	24	0.2	104	4	12			13
14	69		2	22	0.2	106	6	12			14
15	70		1	26	0.2	72	6	12			15
16	71		2	24	0.4	68	4	12			16
17	72		2	22	0.2	96	4	12			17
18	73		4	22	0.4	110	6	12			18
19	83WLS 74		1	24	0.2	140	4	12			19
20	STD A		6	26	0.2	30	14	-			20
21	83WLS 75		2	30	0.4	110	10	12			21
22	76		2	36	0.4	134	6	12			22
23	77		1	64	1.4	32	6	12			23
24	78		4	34	0.4	100	10	12			24
25	79		3	30	0.6	72	6	12			25
26	80		4	32	0.6	80	6	12			26
27	81		3	32	0.4	120	4	12			27
28	82		2	20	0.4	42	6	12			28
29	83		3	18	0.2	62	8	12			29
30	83WLS 84		3	20	0.2	38	10	12			30
31	85		4	28	0.4	68	8	12			31
32	86		4	22	0.4	80	6	12			32
33	87		4	22	0.4	114	6	12			33
34	88		3	34	0.2	86	8	12			34
35	89		3	24	0.2	96	4	12			35
36	90		4	20	0.4	76	6	12			36
37	91		3	14	0.4	82	4	12			37
38	92		4	16	0.4	100	4	12			38
39	83WLS 93		3	20	0.2	80	4	12			39
40	STD A		5	22	0.2	32	18	-			40

VALUES IN PPM UNLESS NOTED OTHERWISE

Certified by

P. Rossbacher

Rossbacher Laboratory Ltd.

GEOCHEMICAL ANALYSTS & ASSAYERS

CERTIFICATE OF ANALYSIS

TO: ANAX MINERALS EXPLORATION
601 - 535 THURLOW ST.
VANCOUVER, B.C.

2726 S. SPRINGER AVE.,
BURNABY, B.C.
CANADA
TELEPHONE: 299-0910

CERTIFICATE NO. 83223-10

INVOICE NO.

DATE ANALYSED 83/07/18

PROJECT: 57037

No.	Sample	pH	No.	Cu	Ag	Zn	Pb	µg/g Au				No.
01	83WLS 94		2	20	0.2	116	8	12				01
02	95		1	22	0.2	110	6	12				02
03	96		1	20	0.2	123	10	12				03
04	97		2	30	0.2	106	10	12				04
05	98		1	20	0.2	53	4	12				05
06	99		2	30	0.2	96	6	12				06
07	100		2	22	0.2	58	6	12				07
08	01		1	60	0.2	162	8	12				08
09	83WLS 102		2	30	0.2	58	6	12				09
10	03		1	22	0.2	106	6	12				10
11	04		1	34	0.2	108	10	12				11
12	05		1	30	0.2	110	10	12				12
13	06		1	22	0.2	106	10	12				13
14	07		1	18	0.2	86	8	12				14
15	08		2	22	0.2	70	8	12				15
16	09		2	30	0.2	86	8	12				16
17	10		2	22	0.2	60	8	12				17
18	11		3	82	1.2	86	10	12				18
19	83WLS 112		2	32	0.4	82	8	12				19
20	STD C		17	192	0.6	180	86	-				20
21	83WLS A3		4	36	0.6	100	6	12				21
22	14		4	42	0.4	44	6	12				22
23	15		2	72	0.8	66	8	12				23
24	16		4	60	1.0	62	6	12				24
25	17		5	68	0.6	84	6	12				25
26	18		18	28	0.4	54	4	12				26
27	19		4	52	0.4	66	4	12				27
28	20		4	42	0.6	80	4	12				28
29	21		6	42	0.4	100	8	12				29
30	83WLS 122		4	22	0.2	110	10	12				30
31	23		3	38	0.4	58	6	12				31
32	24		2	42	0.2	54	8	12				32
33	25		1	16	0.2	30	3	12				33
34	26		2	64	0.6	46	4	12				34
35	27		1	32	0.4	66	8	12				35
36	28		2	34	0.4	72	8	12				36
37	29		6	62	0.6	104	10	12				37
38	30		1	34	0.2	60	6	12				38
39	83WLS 131		1	24	0.2	146	8	12				39
40	12C		16	182	1.6	116	84	-				40

VALUES IN PPM UNLESS NOTED OTHERWISE

Certified by

J. Rossbacher

Rossbacher Laboratory Ltd.

GEOCHEMICAL ANALYSTS & ASSAYERS

CERTIFICATE OF ANALYSIS

TO: ANAX MINERALS EXPLORATION
601 - 535 THURLOW ST.
VANCOUVER, B.C.

2726 S. SPRINGER AVE.,
BURNABY, B.C.
CANADA
TELEPHONE: 299-0910

CERTIFICATE NO. 83223-13

INVOICE NO.

DATE ANALYSED 83/07/18

PROJECT: 57037

No.	Sample	pH	No.	Cu	Ag	Zn	Pb	µg/g Au				No.
01	83WLS 132		1	24	0.2	80	4	12				01
02	33		2	38	0.4	94	14	12				02
03	34		2	42	0.2	88	18	12				03
04	35		1	38	0.2	78	10	12				04
05	36		2	26	0.4	72	8	12				05
06	37		3	48	0.2	100	16	12				06
07	38		2	42	0.2	96	8	12				07
08	39		2	32	0.2	90	14	12				08
09	40		1	32	0.2	72	10	12				09
10	83WLS 141		1	26	0.2	64	8	12				10
11	42		4	34	0.2	80	8	12				11
12	43		1	46	0.2	116	14	12				12
13	44		1	14	0.2	60	8	12				13
14	45		2	26	0.2	62	4	12				14
15	46		1	16	0.2	54	10	12				15
16	47		1	18	0.4	64	4	12				16
17	48		2	18	0.4	110	8	12				17
18	49		2	20	0.4	80	4	12				18
19	83WLS 150		2	32	0.4	84	8	12				19
20	STD D		2	122	3.8	500	98	-				20
21	83WLS 151		6	24	0.2	130	22	12				21
22	52		3	22	0.2	116	10	12				22
23	53		5	16	0.2	114	8	12				23
24	54		3	32	0.2	130	12	12				24
25	55		5	30	0.4	122	10	12				25
26	56		1	14	0.4	98	8	12				26
27	57		1	22	0.2	78	8	12				27
28	58		1	16	0.4	84	6	12				28
29	59		1	24	0.2	108	8	12				29
30	83WLS 160		2	24	0.2	82	8	12				30
31	61		1	16	0.2	76	6	12				31
32	62		2	68	1.0	126	8	12				32
33	63		2	26	0.6	160	10	12				33
34	64		1	24	0.2	84	10	12				34
35	65		2	16	0.2	60	6	12				35
36	66		2	24	0.4	82	8	12				36
37	67		2	14	0.2	60	14	12				37
38	68		2	16	0.4	94	12	12				38
39	83WLS 169		2	14	1.4	52	8	12				39
40	STD D		2	116	4.0	490	8	-				40

VALUES IN PPM UNLESS NOTED OTHERWISE

Certified by

J. Rossbacher

Rossbacher Laboratory Ltd.

GEOCHEMICAL ANALYSTS & ASSAYERS

CERTIFICATE OF ANALYSIS

TO: AMAX MINERALS EXPLORATION
601 - 535 THURLOW ST.
VANCOUVER, B.C.

2225 S. SPRINGER AVE.,
BURNABY, B. C.
CANADA
TELEPHONE: 299-8910

CERTIFICATE NO. 83223-14
INVOICE NO.
DATE ANALYSED 8/10/15
PROJECT 57037

No.	Sample	pH	No	Cu	Ag	Zn	Pb	Sn				No.
01	83WLS170		1	16	0.2	72	8	12				01
02	71		1	16	0.2	76	6	12				02
03	72		1	28	0.4	74	8	12				03
04	73		1	16	0.2	62	6	12				04
05	74		1	18	0.2	70	4	12				05
06	75		1	18	0.2	64	4	12				06
07	76		1	20	0.2	118	8	12				07
08	77		1	12	0.2	50	4	12				08
09	78		1	26	0.2	66	6	12				09
10	83WLS179		1	22	0.2	106	8	12				10
11	80		1	18	0.2	96	8	12				11
12	81		1	16	0.2	70	4	12				12
13	82		1	10	0.2	58	4	12				13
14	83		1	8	0.2	42	6	12				14
15	84		1	14	0.2	68	8	12				15
16	85		4	28	0.2	110	8	12				16
17	86		1	14	0.2	92	6	12				17
18	87		1	16	0.2	60	6	12				18
19	83WLS188		1	20	0.2	72	8	12				19
20	STDC		18	172	0.8	116	78	-				20
21	83WLS189		5	32	0.2	82	8	12				21
22	90		1	12	0.2	58	6	12				22
23	91		1	18	0.2	82	4	12				23
24	92		1	14	0.2	62	4	12				24
25	93		1	28	0.2	90	8	12				25
26	94		1	42	0.2	136	4	12				26
27	95		1	12	0.2	48	4	12				27
28	96		1	16	0.4	76	8	12				28
29	97		1	16	0.2	62	6	12				29
30	83WLS198		3	14	0.2	72	6	12				30
31	99		1	12	0.2	60	6	12				31
32	200		2	26	0.4	78	6	12				32
33	01		7	14	0.2	70	6	12				33
34	02		3	16	0.2	82	4	12				34
35	03		4	14	0.2	60	10	12				35
36	04		7	42	0.2	110	6	12				36
37	05		2	16	0.2	62	4	12				37
38	06		6	18	0.2	72	6	12				38
39	83WLS207		10	22	0.2	126	6	12				39
40	STDC		14	174	0.8	118	78	-				40

VALUES IN PPM UNLESS NOTED OTHERWISE

Certified by

J. Rossbacher

Rossbacher Laboratory Ltd.

GEOCHEMICAL ANALYSTS & ASSAYERS

CERTIFICATE OF ANALYSIS

TO: AMAX MINERALS EXPLORATION
601 - 535 THURLOW ST.
VANCOUVER, B.C.

2225 S. SPRINGER AVE.,
BURNABY, B. C.
CANADA
TELEPHONE: 299-8910

CERTIFICATE NO. 83223-15
INVOICE NO.
DATE ANALYSED 8/10/18
PROJECT 57037

No.	Sample	pH	No	Cu	Ag	Pb	Zn	Sn				No.
01	83WLS208		2	22	0.8	8	84	12				01
02	09		1	20	1.2	6	64	12				02
03	10		2	24	0.6	24	180	12				03
04	11		5	24	0.6	10	96	12				04
05	12		1	14	0.4	10	42	12				05
06	13		1	16	0.4	8	72	12				06
07	14		1	16	0.4	8	52	12				07
08	15		1	14	0.4	8	58	12			✓	08
09	16		1	12	0.4	8	72	12			✓	09
10	83WLS217		1	28	0.2	6	78	12				10
11	18		1	14	0.4	6	60	12				11
12	19		1	12	0.2	4	38	12				12
13	20		1	16	0.6	4	56	12				13
14	21		1	34	0.8	20	94	12				14
15	22		1	106	0.8	26	108	12				15
16	23		2	52	0.6	8	94	12			✓	16
17	24		8	38	1.6	6	98	12				17
18	25		1	28	0.4	6	80	12				18
19	26		1	22	0.4	10	110	12			✓	19
20	83WLS227		1	40	0.4	12	110	12			✓	20
21	STDC		2	126	0.0	102	520	-				21
22												22
23												23
24												24
25												25
26												26
27												27
28												28
29												29
30												30
31												31
32												32
33												33
34												34
35												35
36												36
37												37
38												38
39												39
40												40

VALUES IN PPM UNLESS NOTED OTHERWISE

Certified by

J. Rossbacher

Rossbacher Laboratory Ltd.

GEOCHEMICAL ANALYSTS & ASSAYERS

CERTIFICATE OF ANALYSIS

CANAMAX RESOURCES INC.

TO: 601 - 535 THURLOW ST.
VANCOUVER, B.C. V6E 3L6

2225 S. SPRINGER AVE.,
BURNABY, B.C.
CANADA
TELEPHONE: 299-6910

CERTIFICATE NO. 83255-9

INVOICE NO.

DATE ANALYSED 8/3/08/03

PROJECT 57037

No.	Sample	pH	Mo	Cu	Ag	Zn	Pb	Pu			No.
01	83 WLS 228		1	56	0.2	92	2	10			01
02	229		1	54	0.2	76	2	10			02
03	230		1	186	0.2	86	2	10			03
04	231		1	148	0.2	102	2	10			04
05	232		1	54	0.2	100	2	10			05
06	233		1	42	0.2	142	2	10			06
07	234		1	140	0.2	84	2	10			07
08	235		2	72	0.2	112	6	10			08
09	236		2	54	0.2	110	12	10			09
10	83 WLS 237		1	42	0.2	96	4	10			10
11	238		1	44	"	116	4	10			11
12	239		2	24	"	96	6	10			12
13	240		1	50	0.2	98	2	10			13
14	241		1	38	0.2	96	2	10			14
15	242		2	36	0.2	96	2	10			15
16	243		2	42	0.2	94	74	10			16
17	244		1	28	0.2	100	4	10			17
18	245		1	54	0.2	92	8	10			18
19	83 WLS 246		1	40	0.2	96	6	10			19
20	ST7 C		14	172	0.6	110	82	-			20
21	83 WLS 247		1	44	0.2	120	2	10			21
22	248		1	48	0.2	124	2	10			22
23	249		1	48	0.2	128	4	10			23
24	250		1	40	0.2	118	6	10			24
25	251		1	42	0.2	110	6	10			25
26	252		1	32	0.2	98	6	10			26
27	253		1	40	0.2	92	2	10			27
28	254		1	36	0.2	94	4	10			28
29	255		1	46	0.2	94	4	10			29

32	83 WLS 257		32	24	0.2	24	2	10			32
33	258		2	44	0.2	102	2	10			33
34	259										34
35	260		2	42	0.2	112	8	10			35
36	261		2	38	0.6	74	2	10			36
37	262		1	44	"	88	2	10			37
38	263		2	98	"	84	2	10			38
39	83 WLS 264		3	86	0.2	104	2	10			39
40	ST7 C		14	176	0.6	108	82	-			40

VALUES IN PPM UNLESS NOTED OTHERWISE.

Certified by *J. Rossbacher*

Rossbacher Laboratory Ltd.

GEOCHEMICAL ANALYSTS & ASSAYERS

CERTIFICATE OF ANALYSIS

TO: CANAMAX RESOURCES INC.

601 - 535 THURLOW ST.
VANCOUVER, B.C. V6E 3L6

2225 S. SPRINGER AVE.,
BURNABY, B.C.
CANADA
TELEPHONE: 299-6910

CERTIFICATE NO. 83255 10

INVOICE NO.

DATE ANALYSED 8/3/08/09

PROJECT 57037

No.	Sample	pH	Mo	Cu	Ag	Zn	Pb	Pu			No.
01	83 WLS 265		3	158	1.0	96	2	10			01
02	266		4	60	0.4	94	2	10			02
03	267		1	60	0.2	102	2	10			03
04	268		1	68	0.2	114	2	10			04
05	269		2	162	0.4	104	2	10			05
06	83 WLS 270		1	178	0.2	78	4	10			06

09	273		1	50	0.4	54	10	10			09
10	83 WLS 274		1	254	0.6	64	2	10			10
11	275		1	98	0.4	90	2	10			11
12	276		1	118	0.2	96	6	10			12
13	277		"	62	0.4	84	2	10			13
14	278		1	28	0.4	56	4	10			14
15	279		2	40	0.6	46	2	10			15
16	280		2	26	0.2	40	4	10			16
17	281		8	570	0.2	110	24	10			17
18	282		4	364	0.4	660	22	10			18
19	83 WLS 283		1	150	1.4	200	14	10			19
20	ST7 D		1	178	3.8	490	94	-			20
21	83 WLS 284		4	96	0.2	108	8	10			21

23	285		4	38	0.2	82	2	10			23
24	286		4	14	0.2	88	2	10			24
25	288		8	16	0.2	108	2	10			25
26	289		4	18	0.2	126	2	10			26
27	290		3	32	0.2	80	2	10			27
28	291		2	24	0.2	80	4	10			28
29	292		2	34	0.2	84	2	10			29
30	83 WLS 293		3	30	0.2	108	2	10			30
31	294		2	22	0.2	126	2	10			31
32	295		2	28	0.2	112	2	10			32
33	296		1	24	0.2	50	2	10			33
34	297		2	28	0.2	104	2	10			34
35	298		3	32	0.2	70	2	10			35
36	299		1	42	0.2	70	2	10			36
37	300		2	32	0.2	96	6	10			37
38	301		1	36	0.2	94	4	10			38
39	83 WLS 302		2	36	0.2	98	6	10			39
40	ST7 D		2	178	3.8	490	94	-			40

VALUES IN PPM UNLESS NOTED OTHERWISE.

Certified by *J. Rossbacher*

Rossbacher Laboratory Ltd.

GEOCHEMICAL ANALYSTS & ASSAYERS

2225 E. SPRINGER AVE.,
BURNABY, B.C.
CANADA
TELEPHONE: 299-8810

CERTIFICATE NO. 83255-11
INVOICE NO.
DATE ANALYSED 83/08/02
PROJECT 57037

CERTIFICATE OF ANALYSIS

TO: CANAMAX RESOURCES INC.
601 - 535 THURLOW ST.
VANCOUVER, B.C. V6E 3L6

No.	Sample	pH	Mo	Cu	Ag	Zn	Pb	Au	No.
01	83 WLS 303		1	34	0.2	100	12	1.0	01
02	304		1	56	0.6	90	6	1.0	02
03	305		1	40	0.4	100	2	1.0	03
04	306		1	40	0.4	112	4	1.0	04
05	307		1	20	0.4	144	14	1.0	05
06	308		1	30	0.8	125	2	1.0	06
07	309		1	56	1.6	38	2	1.0	07
08	310		1	28	0.6	102	2	1.0	08
09	311		2	32	1.2	120	2	1.0	09
10	83 WLS 312		1	26	0.2	108	2	1.0	10
11	313		1	32	0.8	108	4	1.0	11
12	314		1	30	0.4	122	4	1.0	12
13	315		1	32	0.4	108	2	1.0	13
14	316		1	64	0.8	76	4	1.0	14
15	317		1	28	0.2	96	6	1.0	15
16	318		1	36	0.6	74	2	1.0	16
17	319		1	52	0.6	72	8	1.0	17
18	320		1	30	0.6	114	6	1.0	18
19	83 WLS 321		1	20	0.2	100	6	1.0	19
20	STD P		1	132	0.4	490	90	-	20
21	83 WLS 322		1	26	0.6	90	10	1.0	21
22	323		2	22	0.2	78	18	1.0	22
23	324		1	36	0.6	96	14	1.0	23
24	325		1	20	0.6	120	20	1.0	24
25	326		1	26	0.4	98	14	1.0	25
26	327		1	158	0.6	146	8	1.0	26
27	328		4	188	0.8	118	10	1.0	27
28	329		1	70	0.4	98	8	1.0	28
29	330		7	168	1.2	114	10	1.0	29
30	83 WLS 331		15	1000	0.8	84	10	1.0	30
31	332		37	276	0.8	62	28	1.0	31
32	333		25	272	0.6	60	12	1.0	32
33	334		18	180	0.2	34	6	1.0	33
34	335		8	184	0.4	70	24	1.0	34
35	336		13	56	0.2	90	14	1.0	35
36	337		3	74	0.4	210	20	1.0	36
37	338		1	20	0.2	80	10	1.0	37
38	339		1	30	0.2	72	8	1.0	38
39	83 WLS 340		1	18	0.2	58	8	1.0	39
40	STD P		2	4.0	470	92	-	-	40

VALUES IN PPM UNLESS NOTED OTHERWISE.

Certified by

P. Rossbacher

Rossbacher Laboratory Ltd.

GEOCHEMICAL ANALYSTS & ASSAYERS

2225 E. SPRINGER AVE.,
BURNABY, B.C.
CANADA
TELEPHONE: 299-8810

CERTIFICATE NO. 83255-11
INVOICE NO.
DATE ANALYSED 83/08/03
PROJECT 57037

TO: CANAMAX RESOURCES INC.
601 - 535 THURLOW ST.
VANCOUVER, B.C. V6E 3L6

No.	Sample	pH	Mo	Cu	Ag	Zn	Pb	Au	No.
01	83 WLS 341		1	8	0.2	34	6	1.0	01
02	342		1	16	0.8	62	8	1.0	02
03	343		1	22	0.2	74	8	1.0	03
04	344		2	26	0.2	88	14	1.0	04
05	345		1	10	0.2	34	6	1.0	05
06	346		1	16	0.4	62	12	1.0	06
07	347		3	16	0.4	56	8	1.0	07
08	348		8	66	1.0	112	16	1.0	08
09	349		2	20	0.2	68	10	1.0	09
10	83 WLS 350		4	40	1.0	70	12	1.0	10
11	351		3	24	0.2	50	6	1.0	11
12	352		2	16	0.2	44	10	1.0	12
13	353		10	26	0.6	90	10	1.0	13
14	354		4	36	1.0	38	4	1.0	14
15	355		4	48	0.2	82	8	1.0	15
16	356		2	50	0.4	90	6	1.0	16
17	357		2	26	0.2	74	2	1.0	17
18	358		3	62	0.4	100	2	1.0	18
19	83 WLS 359		4	50	0.2	74	6	1.0	19
20	STD P		2	128	4.0	480	102	-	20
21	83 WLS 360		1	32	0.2	114	4	1.0	21
22	361		2	62	0.4	90	6	1.0	22
23	362		2	64	0.4	102	10	1.0	23
24	363		2	62	0.2	126	6	1.0	24
25	364		1	46	0.2	84	4	1.0	25
26	365		4	78	0.4	92	6	1.0	26
27	366		5	84	0.2	96	12	1.0	27
28	367		4	58	0.2	102	10	1.0	28
29	368		5	24	0.2	134	38	1.0	29
30	369		4	38	0.2	102	6	1.0	30
31	370		3	56	0.2	116	6	1.0	31
32	371		3	28	0.2	80	6	1.0	32
33	372		4	54	0.2	106	6	1.0	33
34	373		3	58	0.2	98	6	1.0	34
35	374		2	48	0.2	72	6	1.0	35
36	375		2	46	0.2	88	8	1.0	36
37	376		2	12	0.2	100	10	1.0	37
38	377		3	20	0.2	86	8	1.0	38
39	83 WLS 378		4	12	0.2	86	8	1.0	39
40	STD P		2	128	4.0	480	102	-	40

VALUES IN PPM UNLESS NOTED OTHERWISE.

Certified by

P. Rossbacher

Rossbacher Laboratory Ltd.

GEOCHEMICAL ANALYSTS & ASSAYERS

CERTIFICATE OF ANALYSIS

TO: CANAMAX RESOURCES INC.

601 - 535 THURLOW ST.

VANCOUVER, B.C. V6E 3L6

2225 S. SPRINGER AVE.
BURNABY, B.C.
CANADA
TELEPHONE: 299-8810

CERTIFICATE NO. 83255-13

INVOICE NO.

DATE ANALYSED 83/08/03

PROJECT 57037

No.	Sample	PH	Mo	Cu	Ag	Zn	Pb	Au				No.
01	83WLS 379		2	48	0.2	118	12	10				01
02	380		3	34	1.4	142	14	10				02
03	381		2	38	0.4	106	10	10				03
04	387		12	28	0.2	126	10	10				04
05	383		2	30	0.2	120	8	10				05
06	384		2	30	0.2	112	10	10				06
07	385		3	36	0.2	150	10	10				07
08	386		2	26	0.2	90	8	12				08
09	387		3	32	0.2	162	12	10				09
10	83WLS 388		2	20	0.2	96	10	10				10
11	389		6	38	0.2	188	12	10				11
12	390		2	28	0.2	108	12	10				12
13	391		3	28	0.2	160	4	12				13
14	392		2	28	0.2	120	8	10				14
15	393		2	76	0.2	74	8	10				15
16	394		2	44	0.4	74	8	10				16
17	395		3	50	0.4	116	10	10				17
18	396		3	42	0.8	102	12	10				18
19	83WLS 397		2	44	0.6	116	10	10				19
20	STD E		4	80	0.2	156	10	-				20
21	83WLS 398		3	60	0.6	92	8	10				21
22	399		2	60	0.6	88	8	10				22
23	400		2	48	0.6	88	6	10				23
24	401		3	76	0.6	78	8	10				24
25	402		4	74	0.8	88	10	10				25
26	403		5	86	0.4	94	8	10				26
27	404		5	72	0.2	98	8	10				27
28	405		3	64	0.4	104	8	10				28
29	406		4	46	0.2	98	8	10				29
30	407		3	68	0.4	104	8	10				30
31	408		3	78	0.4	120	4	10				31
32	409		4	74	0.2	122	6	10				32
33	410		11	52	0.2	128	8	10				33
34	411		3	66	1.4	88	10	10				34
35	412		2	38	0.2	84	10	10				35
36	413		3	28	0.2	110	8	10				36
37	414		3	54	0.2	102	8	10				37
38	415		3	72	0.2	160	10	10				38
39	83WLS 416		3	52	0.2	104	8	10				39
40	STD E		4	80	0.2	156	10	-				40

VALUES IN PPM UNLESS NOTED OTHERWISE.

Certified by *J. Rossbacher*

Rossbacher Laboratory Ltd.

GEOCHEMICAL ANALYSTS & ASSAYERS

CERTIFICATE OF ANALYSIS

TO: CANAMAX RESOURCES INC.

601 - 535 THURLOW ST.

VANCOUVER, B.C. V6E 3L6

2225 S. SPRINGER AVE.
BURNABY, B.C.
CANADA
TELEPHONE: 299-8810

CERTIFICATE NO. 83255-14

INVOICE NO.

DATE ANALYSED 83/08/03

PROJECT 57037

No.	Sample	PH	Mo	Cu	Ag	Zn	Pb	Au				No.
01	83WLS 417		1	46	0.2	126	6	10				01
02	418		1	38	0.2	102	8	10				02
03	419		1	46	0.4	106	8	10				03
04	420		1	44	0.6	100	10	10				04
05	421		20	68	0.4	126	20	10				05
06	422		4	70	0.2	100	14	10				06
07	423		1	22	0.2	54	10	10				07
08	424		5	30	0.8	54	8	10				08
09	425		4	42	1.4	78	12	10				09
10	83WLS 426		1	42	0.2	108	12	10				10
11	427		1	30	0.2	90	12	10				11
12	428		1	24	0.2	88	14	10				12
13	429		1	30	1.0	62	8	10				13
14	430		1	20	0.8	72	10	10				14
15	431		1	22	0.2	74	10	10				15
16	432		1	34	0.2	66	12	10				16
17	433		4	42	0.2	72	14	10				17
18	434		4	32	0.2	106	18	10				18
19	83WLS 435		2	18	0.6	68	10	10				19
20	STD E		2	76	0.2	144	18	-				20
21	83WLS 436		1	22	0.2	78	10	10				21
22	437		1	30	0.2	84	12	10				22
23	438		1	80	0.6	84	14	10				23
24	439		2	42	0.2	132	10	10				24
25	440		3	104	1.2	102	12	10				25
26	441		5	128	0.2	180	10	10				26
27	442		3	130	0.2	140	10	10				27
28	443		1	78	0.2	128	10	10				28
29	444		1	30	0.2	86	16	10				29
30	445		1	30	0.2	78	14	10				30
31	446		1	20	0.2	90	18	10				31
32	447		1	26	0.4	84	8	10				32
33	448		1	30	0.2	96	8	10				33
34	449		1	22	0.2	80	8	10				34
35	450		1	26	0.2	80	6	10				35
36	451		1	28	0.2	100	6	10				36
37	452		1	30	0.2	110	6	10				37
38	453		1	30	0.4	86	8	10				38
39	83WLS 454		2	66	0.8	120	12	10				39
40	STD E		2	76	0.2	148	18	-				40

VALUES IN PPM UNLESS NOTED OTHERWISE.

Certified by *J. Rossbacher*

Rossbacher Laboratory Ltd.

GEOCHEMICAL ANALYSTS & ASSAYERS

CERTIFICATE OF ANALYSIS

TO: CANAMAX RESOURCES INC.
601 - 535 THURLOW ST.
VANCOUVER, B.C. V6E 3L6

2725 S. SPRINGER AVE.,
BURNABY, B.C.
CANADA
TELEPHONE: 799 8810

CERTIFICATE NO. 83255-15
INVOICE NO.
DATE ANALYSED 5/3/03
PROJECT 57037

No.	Sample	pH	Mo	Cu	Ag	Zn	Pb	Au	No.
01	83WLS 4153		1	54	0.6	104	12	10	01
02	4154		1	74	0.6	118	6	10	02
03	4157		1	46	0.4	112	8	10	03
04	4158		1	60	0.2	78	10	10	04
05	4159		1	42	0.4	84	6	10	05
06	4160		1	30	0.2	70	6	10	06
07	4161		1	58	0.2	74	2	10	07
08	4162		1	36	0.4	108	2	10	08
09	4163		1	34	0.2	84	6	10	09
10	83WLS 4164		1	32	0.8	116	6	10	10
11	4165		1	22	0.2	84	10	10	11
12	4166		1	36	0.2	80	6	10	12
13	4167		1	32	0.2	84	8	10	13
14	4168		1	114	0.2	102	14	10	14
15	4169		1	150	0.6	108	20	10	15
16	4170		1	116	0.2	184	64	10	16
17	4171		3	212	0.4	118	12	100	17
18	83WLS 4172		3	254	0.8	140	60	30	18
19	85WLS 369A		1	92	0.2	66	2	10	19
20									20
21									21
22									22
23									23
24									24
25									25
26									26
27									27
28									28
29									29
30									30
31									31
32									32
33									33
34									34
35									35
36									36
37									37
38									38
39									39
40									40

VALUES IN PPM UNLESS NOTED OTHERWISE

Certified by *J. Rossbacher*

Rossbacher Laboratory Ltd.

GEOCHEMICAL ANALYSTS & ASSAYERS

CERTIFICATE OF ANALYSIS

TO: CANAMAX RESOURCES INC.
601 - 535 THURLOW ST.
VANCOUVER, B.C. V6E 3L6

2725 S. SPRINGER AVE.,
BURNABY, B.C.
CANADA
TELEPHONE: 799 8810

CERTIFICATE NO. 83261-10
INVOICE NO.
DATE ANALYSED AUG, 1973
PROJECT 57037

No.	Sample	pH	Mo	Cu	Ag	Zn	Pb	Au	No.
01	83WLS 473		2	48	0.6	140	10	10	01
02	474		1	30	0.2	54	8	10	02
03	475		1	30	0.2	148	8	10	03
04	476		1	22	0.2	160	8	10	04
05	477		1	22	0.4	72	12	10	05
06	478		2	26	0.2	118	10	10	06
07	479		1	22	0.2	108	12	10	07
08	480		1	16	0.2	72	12	10	08
09	481		1	20	0.2	110	10	10	09
10	83WLS 482		2	76	0.8	180	12	10	10
11	483		2	46	0.2	80	12	10	11
12	484		2	40	0.2	72	10	10	12
13	485		1	38	0.2	118	10	10	13
14	486		1	40	0.2	88	12	10	14
15	487		2	40	0.2	72	10	10	15
16	488		1	26	0.2	56	12	10	16
17	489		1	22	0.2	56	12	10	17
18	490		1	30	0.2	128	14	10	18
19	82WLS 491		2	22	0.2	118	10	10	19
20	STD B		26	134	0.0	126	82	-	20
21	83WLS 492		2	52	0.4	128	12	10	21
22	493		2	30	0.2	110	12	10	22
23	494		2	18	0.4	102	12	10	23
24	495		2	20	0.2	80	14	10	24
25	496		3	28	0.2	96	14	10	25
26	497		3	54	0.2	106	14	10	26
27	498		8	86	0.2	96	10	10	27
28	499		4	50	0.2	102	14	10	28
29	500		1	22	0.2	42	6	10	29
30	83WLS 501		2	30	0.4	90	16	10	30
31	502		1	20	0.2	72	10	10	31
32	503		2	34	0.2	100	16	10	32
33	504		1	16	0.2	54	10	10	33
34	505		1	16	0.2	76	12	10	34
35	506		3	52	0.2	54	18	10	35
36	507		2	28	0.6	80	16	10	36
37	508		2	14	0.2	60	12	10	37
38	509		5	34	0.2	72	26	10	38
39	83WLS 510		2	30	0.8	58	10	10	39
40	STD B		29	132	0.0	132	94	-	40

VALUES IN PPM UNLESS NOTED OTHERWISE

Certified by *J. Rossbacher*

Rossbacher Laboratory Ltd.

GEOCHEMICAL ANALYSTS & ASSAYERS

CERTIFICATE OF ANALYSIS

TO: CANAMAX RESOURCES INC.
601 - 535 THURLOW ST.

2225 S. SPRINGER AVE.,
BURNABY, B.C.
CANADA
TELEPHONE: 799-8810

CERTIFICATE NO. 83761-11

INVOICE NO.

DATE ANALYSED *Fri. 15/83*

PROJECT *57037*

No.	Sample	pH	Mo	Co	Ni	Co	Mn	Fe	Ag	Zn	Pb	Au	No.
01	<i>3wts Sil</i>		<i>1</i>	<i>12</i>	-	-	-	-	<i>0.2</i>	<i>100</i>	<i>8</i>	<i>1</i>	01
02	<i>-12</i>		<i>1</i>	<i>12</i>	-	-	-	-	<i>0.2</i>	<i>90</i>	<i>6</i>	<i>10</i>	02
03	<i>51%</i>		<i>1</i>	<i>12</i>	-	-	-	-	<i>0.2</i>	<i>72</i>	<i>6</i>	<i>20</i>	03

34													34
35													35
36													36
37													37
38													38
39													39
40													40

VALUES IN PPM UNLESS NOTED OTHERWISE

Certified by *[Signature]*

NIGEL

Rossbacher Laboratory Ltd.

GEOCHEMICAL ANALYSTS & ASSAYERS

2225 S. SPRINGER AVE.,
BURNABY, B.C.
CANADA
TELEPHONE: 799-8810
AREA CODE: 604

ASSAY WORKSHEET

CLIENT AMAX MINERALS EXPLORATION
601 - 535 THURLOW ST.
VANCOUVER, B.C. V6E 3L6

CERTIFICATE: *83195 A*

INVOICE NO.:

DATE RECEIVED:

DATE ANALYZED: *JULY 15, 1983*

PROJECT: *WHITESAIL PROJECT, SAMPLING TEST.*

No.	Sample		<i>*</i> +10	-10	-20	-40	-80	<i>**</i> -80	No.
			+20	+40	+90				

13	<i>83WNS 56</i>		<i>10</i>	<i>10</i>	<i>10</i>	<i>10</i>	<i>20</i>		<i>20</i>	13	
14	<i>83WNS 57</i>		<i>10</i>	<i>10</i>	<i>10</i>	<i>10</i>	<i>10</i>		<i>10</i>	14	
15	<i>83WNS 58</i>		<i>10</i>	<i>10</i>	<i>10</i>	<i>10</i>	<i>10</i>		<i>10</i>	15	
16	<i>83WNS 59</i>		<i>10</i>	<i>10</i>	<i>10</i>	<i>10</i>	<i>40</i>		<i>10</i>	16	
17	<i>83WNS 60</i>		<i>10</i>	<i>10</i>	<i>10</i>	<i>10</i>	<i>10</i>		<i>10</i>	17	
18	<i>83WNS 61</i>		<i>10</i>	<i>10</i>	<i>10</i>	<i>10</i>	<i>10</i>		<i>10</i>	18	
19	<i>83WNS 62</i>		<i>10</i>	<i>10</i>	<i>10</i>	<i>10</i>	<i>30</i>		<i>10</i>	19	
20	<i>83WNS 63</i>		<i>10</i>	<i>10</i>	<i>10</i>	<i>10</i>	<i>10</i>		<i>10</i>	20	
21	<i>83WNS 64</i>		<i>10</i>	<i>10</i>	<i>10</i>	<i>10</i>	<i>10</i>		<i>10</i>	21	
22	<i>83WNS 65</i>		<i>10</i>	<i>10</i>	<i>10</i>	<i>10</i>	<i>10</i>		<i>10</i>	22	
23										23	
24										24	
25	<i>*</i>	<i>INDICATES MESH SIZE (TYLER SCREENS).</i>									25
26		<i>EACH FRACTION PULVERIZED TO -100 MESH.</i>									26
27											27
28	<i>**</i>	<i>MINUS 80 MESH FRACTION, NOT PULVERIZED</i>									28
29											29
30											30
31		<i>VALUES ARE EXPRESSED IN P.P.B. GOLD</i>									31
32											32
33											33
34											34
35											35
36											36
37											37
38											38
39											39
40											40

Rossbacher Laboratory Ltd.

GEOCHEMICAL ANALYSTS & ASSAYERS

2225 S. SPRINGER AVE.,
BURNABY, B.C.
CANADA
TELEPHONE: 299-8910

CERTIFICATE NO. *83255-1*
INVOICE NO.
DATE ANALYSED *8/10/87*
PROJECT *57027*

CERTIFICATE OF ANALYSIS

TO: CANAMAX RESOURCES INC.
601 - 535 THURLOW ST.
VANCOUVER, B.C. V6E 3L6

No.	Sample	pH	Mo	Cu	Ag	Zn	Pb	Au				No.
03	<i>S 7</i>		2	50	0.4	630	8	1.0				03
04	<i>70</i>		2	144	0.2	140	10	1.0				04
05	<i>71</i>		2	50	0.2	626	11	1.0				05
06	<i>72</i>		2	114	0.2	120	16	1.0				06
07	<i>73</i>		2	26	0.2	40	4	1.0				07
08	<i>74</i>		5	6.0	0.2	138	6	1.0				08
09	<i>75</i>		5	50	0.2	142	4	1.0				09
10	<i>83 WNS 76</i>		4	42	0.2	180	11	1.0				10
11	<i>77</i>		4	34	0.4	150	8	1.0				11
12	<i>78</i>		3	118	0.2	122	5	1.0				12
13	<i>79</i>		5	190	0.8	83	6	1.0				13
14	<i>80</i>		15	328	1.6	110	8	1.0				14

Rossbacher Laboratory Ltd.

GEOCHEMICAL ANALYSTS & ASSAYERS

2225 S. SPRINGER AVE.,
BURNABY, B.C.
CANADA
TELEPHONE: 299-8910

CERTIFICATE NO. *83223-16*
INVOICE NO.
DATE ANALYSED *82/07/87*
PROJECT *57037*

CERTIFICATE OF ANALYSIS

TO: AMAX MINERALS EXPLORATION
601 - 535 THURLOW ST.
VANCOUVER, B.C.

No.	Sample	pH	Mo	Cu	Ag	Zn	Pb	Au				No.
01	<i>83WNS 81</i>		8	38	0.4	54	8	1.0				01
02	<i>82</i>		7	144	0.4	80	18	1.0				02
03	<i>83</i>		6	16	0.4	52	8	1.0				03
04	<i>84</i>		4	20	0.6	76	8	1.0				04
05	<i>85</i>		4	26	0.4	108	12	1.0				05
06	<i>86</i>		4	28	0.2	86	10	1.0				06
07	<i>87</i>		2	24	0.4	88	12	1.0				07
08	<i>88</i>		6	28	0.4	92	18	1.0				08
09	<i>89</i>		8	34	0.4	94	14	1.0				09
10	<i>83WNS 90</i>		6	28	0.2	66	18	1.0				10
11	<i>91</i>		10	28	0.2	64	12	1.0				11
12	<i>92</i>		6	24	0.2	78	10	1.0				12
13	<i>93</i>		10	24	0.2	114	6	1.0				13
14	<i>94</i>		8	26	0.4	138	14	1.0				14
15	<i>95</i>		7	50	0.2	46	10	1.0				15
16	<i>96</i>		6	62	0.2	86	12	1.0				16
17	<i>97</i>		6	34	0.2	58	4	1.0				17
18	<i>98</i>		4	38	0.6	82	2	1.0				18
19	<i>83WNS 99</i>		1	14	0.2	62	2	1.0				19
20	<i>STD B</i>		26	136	0.8	124	92	-				20
21	<i>83WNS 100</i>		4	20	0.2	68	4	1.0				21
22	<i>01</i>		3	18	0.2	124	6	1.0				22
23	<i>02</i>		7	22	0.2	84	6	1.0				23
24	<i>03</i>		4	28	0.4	36	6	1.0				24
25	<i>04</i>		6	110	1.2	100	8	1.0				25
26	<i>05</i>		6	70	1.0	74	4	1.0				26
27	<i>06</i>		8	38	0.4	50	8	1.0				27
28	<i>07</i>		6	32	0.6	42	6	1.0				28
29	<i>08</i>		6	38	0.6	46	2	1.0				29
30	<i>83WNS 109</i>		6	28	0.4	58	6	1.0				30
31	<i>10</i>		4	30	0.2	84	6	1.0				31
32	<i>11</i>		6	10	0.2	58	8	1.0				32
33	<i>12</i>		6	28	0.2	72	6	1.0				33
34	<i>13</i>		8	24	0.2	108	6	1.0				34
35	<i>14</i>		6	18	0.4	100	6	1.0				35
36	<i>15</i>		3	32	0.2	24	4	1.0				36
37	<i>16</i>		3	38	0.4	48	4	1.0				37
38	<i>17</i>		4	38	0.2	132	8	1.0				38
39	<i>83WNS 118</i>		4	48	0.6	38	4	1.0				39
40	<i>STD B</i>		50	134	0.8	120	92	-				40

VALUES IN PPM UNLESS NOTED OTHERWISE.

Certified by

J. Rossbacher

Rossbacher Laboratory Ltd.

GEOCHEMICAL ANALYSTS & ASSAYERS

CERTIFICATE OF ANALYSIS

TO: AMAX MINERALS EXPLORATION
601 - 535 THURLLOW ST.
VANCOUVER, B.C.

2225 S. SPRINGER AVE.,
BURNABY, B.C.
CANADA
TELEPHONE: 299-0010

CERTIFICATE NO. 83223-17
INVOICE NO.
DATE ANALYSED 83/07/27
PROJECT S7037

No.	Sample	pH	Mo	Cu	Ag	Zn	Pb	^{ppb} Au				No.
01	83WNS19		14	34	0.4	62	6	10				01
02	20		2	20	0.2	116	10	10				02
03	21		2	16	0.2	70	8	10				03
04	22		2	14	0.2	48	8	10				04
05	23		2	36	0.2	88	8	10				05
06	24		2	28	0.2	96	10	10				06
07	25		2	20	0.2	68	8	10				07
08	26		2	32	0.2	78	10	10				08
09	27		2	34	0.2	62	4	10				09
10	83WNS128		2	36	0.2	86	6	10				10
11	29		2	18	0.2	72	8	10				11
12	30		2	18	0.2	70	6	10				12
13	31		2	22	0.2	70	6	10				13
14	32		2	22	0.2	90	10	10				14
15	33		2	34	0.2	88	8	10				15
16	34		3	14	0.4	68	8	10				16
17	35		2	16	0.2	74	8	10				17
18	36		1	20	0.2	100	8	10				18
19	83WNS137		4	10	0.2	64	8	10				19
20	STD C		18	180	0.6	110	84	-				20
21	85WNSB8		2	12	0.2	64	8	10				21
22	39		2	12	0.2	56	8	10				22
23	40		3	16	0.2	64	8	10				23
24	41		2	10	0.2	56	10	10				24
25	42		1	14	0.2	62	10	10				25
26	43		6	20	0.2	92	10	10				26
27	44		5	32	0.2	72	10	10				27
28	45		5	18	0.2	80	8	10				28
29	46		4	18	0.2	70	6	10				29
30	83WNS147		4	18	0.2	68	10	10				30
31	48		4	12	0.2	56	8	10				31
32	49		6	20	0.2	84	8	10				32
33	50		5	18	0.2	72	6	10				33
34	51		6	14	0.2	68	10	10				34
35	52		6	16	0.4	88	10	10				35
36	53		5	14	0.2	62	10	10				36
37	54		6	12	0.2	54	8	10				37
38	55		4	10	0.4	42	8	10				38
39	83WNS156		15	114	0.4	80	10	10				39
40	STD C		18	186	0.6	112	84	-				40

VALUES IN PPM UNLESS NOTED OTHERWISE.

Certified by *P. Rossbach*

Rossbacher Laboratory Ltd.

GEOCHEMICAL ANALYSTS & ASSAYERS

CERTIFICATE OF ANALYSIS

TO: AMAX MINERALS EXPLORATION
601 - 535 THURLLOW ST.
VANCOUVER, B.C.

2225 S. SPRINGER AVE.,
BURNABY, B.C.
CANADA
TELEPHONE: 299-0010

CERTIFICATE NO. 83223-18
INVOICE NO.
DATE ANALYSED 83/07/27
PROJECT S7037

No.	Sample	pH	Mo	Cu	Ni	Co	Mn	Fe	Ag	Zn	Pb	^{ppb} Au	No.
01	83WNS157		4	24	-	-	-	-	0.6	76	12	10	01
02	58		3	16	-	-	-	-	0.4	56	12	10	02
03	59		3	24	-	-	-	-	0.4	92	12	10	03
04	60		3	16	-	-	-	-	0.4	76	10	10	04
05	61		2	22	-	-	-	-	0.2	80	10	10	05
06	62		2	18	-	-	-	-	0.4	70	12	10	06
07	63		1	26	-	-	-	-	0.2	90	12	10	07
08	64		1	24	-	-	-	-	0.4	88	12	10	08
09	65		1	20	-	-	-	-	0.4	82	12	10	09
10	83WNS166		1	18	-	-	-	-	0.2	70	12	10	10

13	S169		2	24	-	-	-	-	0.4	82	10	10	13
14	70		1	20	-	-	-	-	0.2	62	12	10	14
15	71		1	24	-	-	-	-	0.6	82	12	10	15
16	72		4	20	-	-	-	-	0.2	68	10	10	16
17	73		3	28	-	-	-	-	0.6	96	16	10	17
18	74		3	28	-	-	-	-	0.6	116	14	10	18
19	83WNS175		1	14	-	-	-	-	0.2	54	16	10	19
20	E		2	72	36	10	250	24	0.2	156	20	-	20
21	83WNS176		3	24	-	-	-	-	0.2	60	12	10	21
22	77		3	30	-	-	-	-	1.0	96	12	10	22
23	78		6	84	-	-	-	-	0.8	122	16	10	23
24	79		2	26	-	-	-	-	0.4	62	12	10	24
25	80		4	34	-	-	-	-	0.2	90	14	10	25
26	81		5	22	-	-	-	-	0.4	70	14	10	26
27	82		2	12	-	-	-	-	0.6	58	12	10	27
28	83		3	18	-	-	-	-	0.4	70	10	10	28
29	84		1	18	-	-	-	-	0.2	74	12	10	29
30	83WNS185		1	26	-	-	-	-	0.4	74	12	10	30
31	86		2	16	-	-	-	-	0.8	54	14	10	31
32	87		1	16	-	-	-	-	0.4	68	14	10	32
33	88		1	24	-	-	-	-	0.4	76	14	10	33
34	89		1	8	-	-	-	-	0.4	32	10	10	34
35	90		1	16	-	-	-	-	0.2	62	10	10	35
36	91		1	18	-	-	-	-	0.4	66	12	10	36
37	92		1	18	-	-	-	-	0.4	62	12	10	37
38	93		1	26	-	-	-	-	0.2	90	24	10	38
39	83WNS194		4	68	-	-	-	-	0.6	106	18	10	39
40	E		5	74	38	10	260	24	0.2	156	20	-	40

VALUES IN PPM UNLESS NOTED OTHERWISE.

Certified by *P. Rossbach*

Rossbacher Laboratory Ltd.

GEOCHEMICAL ANALYSTS & ASSAYERS

CERTIFICATE OF ANALYSIS

2225 S. SPRINGER AVE.,
BURNABY, B.C.
CANADA
TELEPHONE: 299-0910

CERTIFICATE NO. 83223-19
INVOICE NO.
DATE ANALYSED 8/10/70
PROJECT 57037

TO: ANAX MINERALS EXPLORATION
601 - 535 THURLOW ST.
VANCOUVER, B.C.

No.	Sample	pH	Mo	Cu	Ag	Zn	Pb	Au				No.
01	83WNS195		8	216	0.2	112	6	10				01
02	96		3	28	0.6	62	12	10				02
03	97		3	24	1.0	80	10	10				03
04	98		4	34	1.2	98	12	10				04
05	99		6	236	0.2	114	18	10				05
06	200		3	44	0.6	62	12	10				06
07	01		4	74	0.2	72	4	10				07
08	02		3	22	0.2	54	6	10				08
09	03		4	28	0.2	84	10	10				09
10	83WNS204		3	24	0.2	100	12	10				10
11	05		3	28	0.2	90	12	10				11
12	06		2	20	0.2	58	10	10				12
13	07		2	16	0.6	52	10	10				13
14	08		4	26	0.4	72	10	10				14
15	09		6	32	0.4	82	18	10				15
16	10		7	28	0.2	56	12	10				16
17	11		3	20	0.2	72	12	10				17
18	12		4	22	0.2	58	12	10				18
19	83WNS213		4	22	0.2	78	10	10				19
20	STD E		4	76	0.2	160	20	-				20
21	83WNS214		5	30	0.2	104	18	10				21
22	15		2	36	0.4	92	12	10				22
23	16		1	20	0.2	72	12	10				23
24	83WNS217		1	14	0.6	46	12	10				24
25												25
26												26
27												27
28												28
29												29
30												30
31												31
32												32
33												33
34												34
35												35
36												36
37												37
38												38
39												39
40												40

VALUES IN PPM UNLESS NOTED OTHERWISE

Certified by: *L. Rossbacher*

Rossbacher Laboratory Ltd.

GEOCHEMICAL ANALYSTS & ASSAYERS

CERTIFICATE OF ANALYSIS

TO: CANAMAX RESOURCES INC.
601 - 535 THURLOW ST.
VANCOUVER, B.C. V6E 3L6

2225 S. SPRINGER AVE.,
BURNABY, B.C.
CANADA
TELEPHONE: 299-0910

CERTIFICATE NO. 83255-1
INVOICE NO.
DATE ANALYSED 8/10/70
PROJECT 57037

No.	Sample	pH	Mo	Cu	Ag	Zn	Pb	Au				No.
25	5 228		9	180	1.0	98	22	10				25
26	229		25	190	1.0	112	40	10				26
27												27
28	5 231		2	32	0.2	84	16	10				28
29	232		3	50	0.6	66	10	10				29
30	83WNS 223		3	36	0.2	88	14	10				30
31	234		2	24	0.2	80	8	10				31
32	235		9	168	1.4	88	12	10				32
33	236		5	340	3.0	92	106	20				33
34	237		5	74	0.4	76	10	10				34
35	238		3	36	1.0	58	8	10				35

VALUES IN PPM UNLESS NOTED OTHERWISE

Certified by: *L. Rossbacher*

Kossbacher Laboratory Ltd.

GEOCHEMICAL ANALYSTS & ASSAYERS

CERTIFICATE OF ANALYSIS

CANAMAX RESOURCES INC.

TO: 601 - 535 THURLOW ST.
VANCOUVER, B.C. V6E 3Z5

BURNABY, B.C.
CANADA
TELEPHONE: 299-6910

CERTIFICATE NO. 83255-2

INVOICE NO.

DATE ANALYSED 83/05/13

PROJECT 57037

No.	Sample	pH	Mo	Cu	Ag	Zn	Pb	As	Au	No.
-----	--------	----	----	----	----	----	----	----	----	-----

07	S 253		2	72	0.4	76	2	-	1	07
08	S 254		3	202	0.6	84	2	-	1	08

10	83WNS 256		1	168	1.0	88	2	-	1	10
11	S 269		1	35	0.2	112	2	-	1	11
12	S 260		1	42	0.2	150	2	-	1	12
13										13
14	S 267		10	30	0.6	94	2	-	1	14
15	263		4	6	0.6	60	2	-	1	15
16	S 264		6	34	0.6	68	2	-	1	16

18	S 266		11	280	1.2	96	4	-	1	18
19	83WNS 267		13	124	1.2	118	4	-	1	19
20	STD C		18	176	0.6	110	18	-	1	20
21	83WNS 268		14	184	1.0	96	4	-	1	21
22	269		19	122	1.0	112	10	-	1	22
23	270		4	42	0.4	98	4	-	1	23
24	271		3	44	0.2	84	2	-	1	24
25	273		1	68	0.2	80	2	-	1	25

28	83WNS 272		3	58	0.2	112	4	-	10	28
29										29
30										30
31										31
32										32
33										33
34										34
35										35
36										36
37										37
38										38
39										39
40										40

VALUES IN PPM UNLESS NOTED OTHERWISE.

Certified by *J. Kossbacher*

Kossbacher Laboratory Ltd.

GEOCHEMICAL ANALYSTS & ASSAYERS

CERTIFICATE OF ANALYSIS

TO: CANAMAX RESOURCES INC.
601 - 535 THURLOW STREET
VANCOUVER, B.C.

BURNABY, B.C.
CANADA
TELEPHONE: 299-6910

CERTIFICATE NO. 83460-3

INVOICE NO.

DATE ANALYSED 83/10/10

PROJECT 037

No.	Sample	pH	Mo	Cu	Ag	Zn	Pb	As	Au	No.
-----	--------	----	----	----	----	----	----	----	----	-----

02	S 704		1	150	0.0	130	1420	10		01
03	705		1	36	0.4	94	20	10		02
04	706		1	56	0.2	106	22	10		03
05	707		1	46	0.2	136	11	10		04
06	708		1	54	0.2	144	12	10		05

09	S 711		1	40	0.8	124	10	10		06
----	-------	--	---	----	-----	-----	----	----	--	----

11	S 713		1	46	0.8	98	14	10		07
12	714		2	62	1.2	90	10	10		08
13	715		3	82	0.0	110	38	10		09

15	S 717		19	22	1.6	100	22	10		10
16	718		4	38	1.4	82	26	10		11
17	719		2	30	0.6	62	10	10		12

19	83WNS 721		2	38	1.0	96	12	10		13
20	STD C		14	186	0.6	114	80	-		14

22	S 723		1	28	0.4	104	54	10		15
23	724		1	34	0.6	84	14	10		16
24	725		2	30	0.6	102	12	10		17

27	S 729		1	84	3.0	126	64	10		18
28	730		1	28	1.0	84	18	10		19
29	731		7	48	2.4	80	24	10		20
30	83WNS 732		5	28	1.0	82	12	10		21
31	733		6	30	1.6	78	30	10		22
32	734		3	16	1.2	94	16	10		23
33	735		4	26	0.8	78	12	10		24

37	S 739		2	102	1.0	114	16	10		25
38	740		9	18	1.2	76	16	10		26
39	83WNS 741		43	18	1.0	84	14	10		27
40	STD C		16	186	0.8	114	80	-		28

VALUES IN PPM UNLESS NOTED OTHERWISE.

Certified by *J. Kossbacher*

Kossbacher Laboratory Ltd.

GEOCHEMICAL ANALYSTS & ASSAYERS

CERTIFICATE OF ANALYSIS

TO: CANAMAX RESOURCES INC
601 - 535 THURLOW STREET
VANCOUVER, B.C.

BURNABY, B.C.
CANADA
TELEPHONE: 299-8910

CERTIFICATE NO. 83480-1
INVOICE NO.
DATE ANALYSED 83/10/19
PROJECT # 037

No.	Sample	pH	Mo	Cu	Ag	Zn	Pb	Au	No.
04	S 757		1	50	0.4	74	14	12	04
05	758		1	120	0.4	84	6	12	05
06	759		5	40	0.4	68	10	12	06
07	760		1	48	0.6	84	8	12	07
08	761		1	30	0.6	92	10	12	08
09	762		1	26	0.4	82	14	10	09
10	B3WNS 763		2	26	0.6	70	10	10	10
11	764		1	28	0.8	76	12	10	11
12	765		1	12	0.4	72	18	30	12
14	S 767		1	76	0.4	78	14	10	14
15	768		3	18	1.0	66	12	10	15
16	769		1	16	0.7	58	12	10	16
18	S 771		1	18	0.2	66	14	10	18
20	B3WNS 773		2	30	1.4	84	20	12	20
21	774		2	30	1.8	72	12	10	21
23	S 776		4	220	0.6	130	60	20	23
24	777		5	250	0.8	160	70	12	24
25	778		2	240	0.8	152	62	20	25
26	779		3	280	0.6	158	54	10	26
27	780		4	230	0.6	156	56	10	27
28	781		9	338	1.0	172	72	30	28
29	782		1	212	0.6	124	48	10	29
30	B3WNS 783		1	130	0.6	108	22	10	30
31	784		6	102	0.6	104	28	10	31
32	785		10	128	1.4	184	44	20	32
33	786		10	106	0.8	122	44	10	33
34	787		11	660	1.8	400	70	30	34
38									38
39									39
40									40

VALUES IN PPM, UNLESS NOTED OTHERWISE.

Certified by *L. Kossbacher*

Rossbacher Laboratory Ltd.

GEOCHEMICAL ANALYSTS & ASSAYERS

CERTIFICATE OF ANALYSIS

TO: AMAX MINERALS EXPLORATION
601 - 535 THURLOW ST.
VANCOUVER, B.C.

2225 S. SPRINGER AVE.,
BURNABY, B.C.
CANADA
TELEPHONE: 299-8910

CERTIFICATE NO. 83223-3
INVOICE NO.
DATE ANALYSED 83/07/26
PROJECT 57037

No.	Sample	pH	Mo	Cu	Ag	Zn	Pb	Au	No.
01	83WSS 12		2	14	0.4	76	8	10	01
02	13		1	10	0.4	86	10	10	02
03	14		1	20	0.2	102	8	10	03
04	15		1	10	0.2	46	10	10	04
05	16		1	16	0.8	54	10	10	05
06	17		2	18	0.4	70	10	10	06
07	18		1	24	1.2	86	2	10	07
08	19		1	14	0.2	66	4	10	08
09	20		1	26	0.2	96	6	10	09
10	83WSS 21		1	22	0.2	138	6	10	10
11	22		4	54	0.6	116	12	12	11
12	23		1	18	0.2	54	8	10	12
13	WS 550		1	258	0.2	86	4	10	13
14	51		1	98	0.2	94	8	12	14
15	52		1	146	0.2	114	10	10	15
16	53		5	92	0.2	104	2	10	16
17	54		5	106	0.2	106	4	10	17
18	55		5	78	0.2	86	6	10	18
19	83WSS 56		5	66	0.2	96	6	10	19
20	57 B		30	180	0.8	128	76	-	20
21	83WSS 57		2	38	0.2	102	6	10	21
22	58		2	38	0.2	94	4	10	22
23	59		4	36	0.2	88	10	10	23
24	60		3	96	0.2	110	20	10	24
25	61		5	144	0.2	112	20	10	25
26	62		2	38	0.2	118	4	10	26
27	63		2	28	0.2	144	6	10	27
28	64		2	42	0.6	118	10	10	28
29	65		1	28	0.2	160	4	10	29
30	83WSS 66		2	26	0.2	112	8	10	30
31	67		1	32	0.2	82	6	10	31
32	68		1	38	0.2	60	8	10	32
33	69		1	46	0.2	86	10	10	33
34	70		2	50	0.4	180	8	10	34
35	71		2	34	0.2	112	6	10	35
36	72		1	26	0.2	120	6	10	36
37	73		2	24	0.2	106	4	10	37
38	74		1	20	0.2	106	2	10	38
39	83WSS 75		2	28	0.2	76	12	10	39
40	512 B		30	148	0.8	130	78	-	40

VALUES IN PPM, UNLESS NOTED OTHERWISE.

Certified by *L. Kossbacher*

Rossbacher Laboratory Ltd.

GEOCHEMICAL ANALYSTS & ASSAYERS

CERTIFICATE OF ANALYSIS

TO: AMAX MINERALS EXPLORATION
601 - 535 THURLOW ST.
VANCOUVER, B.C.

2225 S. SPRINGER AVE.,
BURNABY, B. C.
CANADA
TELEPHONE: 299-0910

CERTIFICATE NO. 83223-4

INVOICE NO.

DATE ANALYSED 3/16/12

PROJECT 57037

No.	Sample	pH	Mo	Cu	Ag	Zn	Pb	Fe				No.
01	83WSS 76		3	70	0.0	116	18	10				01
02	77		1	35	0.2	112	14	10				02
03	78		1	25	0.6	90	10	10				03
04	79		1	26	0.2	86	12	10				04
05	80		1	16	0.2	102	12	10				05
06	81		3	20	0.2	84	12	10				06
07	82		2	20	0.2	120	8	10				07
08	83		2	24	0.8	74	10	10				08
09	84		3	20	0.4	74	10	10				09
10	83WSS 85		3	50	0.6	102	12	10				10
11	86		2	18	0.2	108	8	10				11
12	87		1	17	0.2	120	8	10				12
13	88		1	16	0.2	116	10	10				13
14	89		2	20	0.2	150	14	10				14
15	90		2	16	0.2	186	22	10				15
16	91		2	24	0.2	106	12	10				16
17	92		2	27	0.2	100	12	10				17
18	93		3	30	0.2	132	10	10				18
19	83WSS 94		2	20	0.2	78	10	10				19
20	572 B		10	140	1.0	138	26	-				20
21	83WSS 95		2	46	0.2	124	10	10				21
22	96		2	18	0.2	88	10	10				22
23	97		2	210	0.2	84	10	10				23
24	98		2	38	0.2	160	8	10				24
25	99		1	18	0.2	82	8	10				25
26	100		2	24	0.4	94	10	10				26
27	101		2	18	0.4	112	8	10				27
28	102		3	29	0.2	80	10	10				28
29	103		2	32	0.2	162	10	10				29
30	83WSS 104		4	40	0.2	204	26	10				30
31	105		1	10	0.4	48	8	10				31
32	106		2	20	0.2	196	24	10				32
33	107		3	40	0.2	150	24	10				33
34	108		3	14	0.2	154	24	10				34
35	109		2	28	0.2	102	8	10				35
36	110		3	28	0.2	86	10	10				36
37	111		1	26	0.2	82	8	10				37
38	112		1	16	0.2	74	8	10				38
39	83WSS 113		1	20	0.2	88	10	10				39
40	572 B		2A	136	1.0	132	28	-				40

VALUES IN PPM UNLESS NOTED OTHERWISE.

Certified by

P. Rossbach

Rossbacher Laboratory Ltd.

GEOCHEMICAL ANALYSTS & ASSAYERS

CERTIFICATE OF ANALYSIS

TO: AMAX MINERALS EXPLORATION
601 - 535 THURLOW ST.
VANCOUVER, B.C.

2225 S. SPRINGER AVE.,
BURNABY, B. C.
CANADA
TELEPHONE: 299-0910

CERTIFICATE NO. 83223-5

INVOICE NO.

DATE ANALYSED 8/20/12

PROJECT 57037

No.	Sample	pH	Mo	Cu	Ag	Zn	Pb	Fe				No.
01	83WSS 114		1	26	0.2	90	8	10				01
02	115		1	22	0.2	82	8	10				02
03	116		2	26	0.0	92	8	10				03
04	117		1	28	0.4	140	8	10				04
05	118		1	38	0.8	90	8	10				05
06	119		2	22	0.6	82	8	10				06
07	120		1	22	0.4	94	6	10				07
08	121		2	18	0.4	96	6	10				08
09	122		4	22	0.2	134	12	10				09
10	83WSS 123		2	16	0.2	88	8	10				10
11	124		1	10	0.2	76	6	10				11
12	125		1	16	0.2	64	6	10				12
13	126		1	18	0.2	78	4	10				13
14	127		1	14	0.2	54	2	10				14
15	128		1	28	0.2	126	8	10				15
16	129		1	16	0.2	80	10	10				16
17	130		1	18	0.2	86	8	10				17
18	131		1	16	0.2	70	8	10				18
19	83WSS 132		1	16	0.2	74	8	10				19
20	STDE		3	76	0.2	152	18	-				20
21	83WSS 133		1	22	0.2	78	10	10				21
22	134		2	28	0.4	116	6	10				22
23	135		2	24	0.4	132	6	10				23
24	136		1	18	0.4	94	8	10				24
25	137		1	16	0.2	96	8	10				25
26	138		1	16	0.2	80	6	10				26
27	139		1	12	0.2	60	6	10				27
28	140		1	14	0.2	84	8	10				28
29	141		2	24	0.2	80	8	10				29
30	83WSS 142		1	24	0.2	112	10	10				30
31	43		2	40	0.2	106	12	10				31
32												32
33												33
34												34
35												35
36												36
37												37
38												38
39												39
40												40

VALUES IN PPM UNLESS NOTED OTHERWISE.

Certified by

P. Rossbach

Rossbacher Laboratory Ltd.

GEOCHEMICAL ANALYSTS & ASSAYERS

2225 S. SPRINGER AVE.,
BURNABY, B.C.
CANADA
TELEPHONE: 299-8910

CERTIFICATE NO. 83255-3

INVOICE NO.

DATE ANALYSED 8/17/76

PROJECT 57037

CANAMAX RESOURCES INC. CERTIFICATE OF ANALYSIS

TO: 601 - 535 THURLOW ST.
VANCOUVER, B.C. V6E 3L6

No.	Sample	pH	Mo	Cu	Ni	Co	Mn	Fe	Ag	Zn	Pb	Au	No.
01	83 WSS 145		1	44	-	-	-	-	1.0	12	8	10	01
02	146		4	20	-	-	-	-	0.4	84	14	10	02
03	147		4	30	-	-	-	-	0.4	68	10	10	03
04	148		2	18	-	-	-	-	0.2	76	8	10	04
05	149		2	16	-	-	-	-	0.2	88	12	10	05
06	150		2	22	-	-	-	-	0.2	118	10	10	06
07	151		2	24	-	-	-	-	0.2	88	12	10	07
08	152		2	24	-	-	-	-	0.2	90	12	10	08
09	153		1	22	-	-	-	-	0.2	132	14	10	09
10	83 WSS 154		3	34	-	-	-	-	0.2	126	20	10	10
11	155		6	28	-	-	-	-	0.2	80	8	10	11
12	156		3	48	-	-	-	-	0.2	104	16	10	12
13	157		2	40	-	-	-	-	0.2	140	12	10	13
14	158		1	28	-	-	-	-	0.2	104	10	10	14

17	83 WSS 161		2	32	-	-	-	-	0.2	108	30	10	17
18	162		2	20	-	-	-	-	0.2	84	16	10	18
19	83 WSS 163		1	34	-	-	-	-	0.2	80	16	10	19
20	STD B		26	24	-	-	-	-	0.2	140	98	-	20
21	83 WSS 164		2	24	-	-	-	-	0.2	92	12	10	21
22	165		2	28	-	-	-	-	0.2	68	10	10	22

23	83 WSS 166		3	16	-	-	-	-	0.2	64	10	10	23
24	167		2	20	-	-	-	-	0.2	84	16	10	24
25	168		2	18	-	-	-	-	0.2	82	20	10	25
26	169		2	40	-	-	-	-	1.0	50	12	10	26
27	170		3	20	-	-	-	-	1.4	64	12	10	27
28	171		2	26	-	-	-	-	1.0	62	8	10	28
29	172		1	24	-	-	-	-	0.4	90	10	10	29
30	83 WSS 173		1	28	-	-	-	-	0.4	90	6	10	30
31	174		2	76	-	-	-	-	0.2	112	6	10	31
32	175		1	56	-	-	-	-	0.2	74	6	10	32
33	176		1	46	-	-	-	-	0.2	100	8	10	33
34	177		1	38	-	-	-	-	0.2	88	8	10	34
35	178		1	32	-	-	-	-	0.2	100	10	10	35
36	179		2	52	-	-	-	-	2.2	86	10	10	36
37	180		1	34	-	-	-	-	0.2	72	12	10	37
38	181		2	38	-	-	-	-	0.2	66	8	10	38
39	83 WSS 182		1	72	-	-	-	-	0.2	96	6	10	39
40	STD B		28	130	12	4	140	0.8	0.8	134	100	-	40

VALUES IN PPM UNLESS NOTED OTHERWISE.

Certified by *L. Rossbacher*

Rossbacher Laboratory Ltd.

GEOCHEMICAL ANALYSTS & ASSAYERS

2225 S. SPRINGER AVE.,
BURNABY, B.C.
CANADA
TELEPHONE: 299-8910

CERTIFICATE NO. 83255-4

INVOICE NO.

DATE ANALYSED July 26/76

PROJECT 57037

CANAMAX RESOURCES INC. CERTIFICATE OF ANALYSIS

TO: 601 - 535 THURLOW ST.
VANCOUVER, B.C. V6E 3L6

No.	Sample	pH	Mo	Cu	Ni	Co	Mn	Fe	Ag	Zn	Pb	Au	No.
01	83 WSS 183		2	174	-	-	-	-	0.2	116	14	10	01
02	184		1	156	-	-	-	-	0.2	100	6	10	02
03	185		1	366	-	-	-	-	0.2	68	8	10	03
04	186		6	166	-	-	-	-	0.2	70	10	10	04
05	187		4	270	-	-	-	-	0.2	78	8	10	05
06	188		4	134	-	-	-	-	0.2	90	10	10	06
07	189		4	106	-	-	-	-	0.2	102	10	10	07
08	190		4	324	-	-	-	-	0.2	92	12	10	08
09	191		6	136	-	-	-	-	0.2	90	12	10	09
10	83 WSS 192		3	118	-	-	-	-	0.2	82	54	10	10
11	193		2	120	-	-	-	-	0.2	78	10	10	11
12	194		3	84	-	-	-	-	0.2	100	14	10	12
13	195		3	88	-	-	-	-	0.2	104	10	10	13
14	196		3	64	-	-	-	-	0.2	102	12	10	14
15	197		4	196	-	-	-	-	0.2	80	12	10	15
16	198		3	56	-	-	-	-	0.1	82	8	10	16
17	199		2	80	-	-	-	-	0.2	86	8	10	17
18	200		1	42	-	-	-	-	0.2	94	8	10	18
19	83 WSS 201		2	66	-	-	-	-	0.2	100	8	10	19

32	83 WSS 213		3	44	-	-	-	-	0.2	110	18	10	32
33	214		2	56	-	-	-	-	0.2	78	18	10	33
34	215		11	44	-	-	-	-	0.6	126	14	10	34
35	216		7	36	-	-	-	-	0.2	80	20	10	35
36	217		4	28	-	-	-	-	0.2	118	16	10	36
37	218		3	44	-	-	-	-	0.2	106	24	10	37
38	219		3	40	-	-	-	-	0.2	84	18	10	38
39	83 WSS 220		3	36	-	-	-	-	0.2	90	20	10	39
40	STD B		26	136	-	-	-	-	0.8	156	110	-	40

VALUES IN PPM UNLESS NOTED OTHERWISE.

Certified by *L. Rossbacher*

Rossbacher Laboratory Ltd.

GEOCHEMICAL ANALYSTS & ASSAYERS

2225 S. SPRINGER AVE.,
BURNABY, B. C.
CANADA
TELEPHONE: 299-6910

CERTIFICATE NO. 83255-5

INVOICE NO.

DATE ANALYSED

PROJECT 57037

CERTIFICATE OF ANALYSIS

TO: CANAMAX RESOURCES INC.
601 - 535 THURLOW ST.
VANCOUVER, B.C. V6E 3L6

No.	Sample	pH	Mo	Cu	Wt	Co	Mn	Fe	Ag	Zn	Pb	Au	No.
01	83WSS 221		1	36					0.2	74	16	10	01
02	222		1	38					0.6	76	12	10	02
03	213		1	26					0.4	100	10	10	03
04	220		1	28					0.3	100	12	10	04
05	225		1	24					0.2	68	8	10	05
06	226		1	26					0.4	72	10	10	06
07	227		1	26					0.4	64	8	10	07
08	228		2	70					0.2	28	12	10	08
09	5229		2	88					0.2	90	16	10	09
10	83WSS 230			16					3.0	40	22	10	10

11	224		2	28					0.2	82	8	10	11
12	233		1	28					0.2	90	8	10	12
13	234		1	24					0.2	82	8	10	13
14	235		1	22					0.2	74	6	10	14
15	236		4	26					0.2	84	6	10	15
16	237		1	34					0.2	134	2	10	16
17	238		1	38					0.2	136	4	10	17
18	83WSS 239		1	24					0.2	96	2	10	18
19	527		26	136					2.8	128	96	-	19
20	83WSS 240		1	38					0.2	120	8	10	20
21	241		1	36					0.2	140	6	10	21
22	242		1	38					0.2	110	6	10	22
23	243		1	74					0.2	102	8	10	23
24	244		1	82					0.2	68	4	10	24
25	245		1	66					0.2	86	6	10	25
26	246		1	58					0.2	102	4	10	26
27	247		1	38					0.2	74	6	10	27
28	248		1	36					0.2	78	2	10	28
29	249		1	34					0.2	100	6	10	29
30	83WSS 250		1	88					0.2	98	4	10	30

31	83WSS 251		2	52					0.2	86	8	200	31
32	252		2	66					0.2	136	6	10	32
33	253		3	56					0.2	80	6	10	33
34	254		1	34					0.2	130	12	10	34
35	255		1	34					0.2	88	12	10	35
36	256		2	44					0.2	98	12	10	36
37	83WSS 257		2	40					0.2	62	6	10	37
38	527		26	136					0.8	134	94	-	38

VALUES IN PPM UNLESS NOTED OTHERWISE

Certified by *J. Rossbacher*

Rossbacher Laboratory Ltd.

GEOCHEMICAL ANALYSTS & ASSAYERS

2225 S. SPRINGER AVE.,
BURNABY, B. C.
CANADA
TELEPHONE: 299-6910

CERTIFICATE NO. 83255-6

INVOICE NO.

DATE ANALYSED 8/10/76

PROJECT 57037

CERTIFICATE OF ANALYSIS

TO: CANAMAX RESOURCES INC.
601 - 535 THURLOW ST.
VANCOUVER, B.C. V6E 3L6

No.	Sample	pH	Mo	Cu	Ag	Zn	Pb	Au					No.
01	83WSS 254		3	52	0.2	76	12	10					01
02	260		1	38	0.2	84	16	10					02
03	261		1	38	0.2	84	12	10					03
04	262		1	20	0.2	114	10	10					04
05	263		1	38	0.4	90	10	10					05
06	264		1	32	0.4	106	10	10					06
07	265		1	40	0.6	110	10	10					07
08	266		1	34	0.6	110	10	10					08
09	267		3	52	0.4	94	8	10					09
10	83WSS 268		2	30	0.4	100	12	10					10
11	269		3	58	1.0	74	10	10					11
12	270		5	56	0.4	92	20	10					12
13	271		24	52	1.6	80	14	10					13
14	272		5	30	1.2	58	18	10					14
15	273		4	36	0.8	92	6	10					15
16	274		1	18	0.4	62	4	10					16
17	275		1	26	0.2	82	8	10					17
18	276		1	14	0.4	40	6	10					18
19	83WSS 277		1	26	0.5	62	12	10					19
20	527		20	130	1.0	130	88	10					20
21	83WSS 278		1	18	0.4	50	12	10					21
22	83WSS 279		2	20	0.4	60	16	10					22
23	280		13	50	2.6	72	16	10					23
24													24
25													25
26													26
27													27
28													28
29													29
30													30
31													31
32													32
33													33
34													34
35													35
36													36
37													37
38													38
39													39
40													40

VALUES IN PPM UNLESS NOTED OTHERWISE

Certified by *J. Rossbacher*

Rossbacher Laboratory Ltd.

GEOCHEMICAL ANALYSTS & ASSAYERS

CERTIFICATE OF ANALYSIS

TO: CANAMAX RESOURCES INC.
601 - 535 THURLOW ST.
VANCOUVER, B.C. V6E 3L6

2225 S. SPRINGER AVE.,
BURNABY, B.C.
CANADA
TELEPHONE: 299-8910

CERTIFICATE NO. 83256-1
INVOICE NO.
DATE ANALYSED *Aug 1983*
PROJECT 57037

No.	Sample	pH	Mo	Cu	Ag	Zn	Pb	Au				No.
01	83 WSS 281		1	30	0.2	140	16	10				01
02	282		2	64	0.4	112	14	10				02
03	283		1	50	0.4	132	12	10				03
04	284		2	40	0.2	94	12	10				04
05	285		1	40	0.6	132	12	10				05
06	286		2	38	0.2	72	10	10				06
07	287		2	38	0.2	92	8	10				07
08	288		1	30	0.2	152	8	10				08
09	289		12	40	0.4	110	6	10				09
10	83 WSS 290		2	22	0.2	100	10	10				10
11	291		2	34	0.2	76	12	10				11
12	292		2	6	0.6	72	10	10				12
13	293		3	88	0.8	64	10	10				13
14	294		2	42	0.4	134	12	10				14
15	295		2	64	0.4	138	14	10				15
16	296		2	40	0.4	104	16	10				16
17	297		1	30	0.4	106	16	10				17
18	298		2	26	0.2	102	10	10				18
19	83 WSS 299		2	42	0.2	126	14	10				19
20	STD C		16	172	0.6	110	72	-				20
21	83 WSS 300		2	42	0.2	98	14	10				21
22	301		2	34	0.2	76	12	10				22
23	302		2	32	0.2	112	20	10				23
24	303		3	64	0.6	164	32	10				24
25	304		6	200	0.6	252	36	10				25
26	305		6	270	0.6	278	20	10				26
27	306		6	252	0.6	140	24	20				27
28												28
29	83 WSS 307		3	64	0.6	76	12	10				29
30	83 WSS 308		3	38	0.4	78	14	10				30
31	310		2	32	0.2	58	6	10				31
32	311		2	22	0.4	52	6	10				32
33	312		2	28	0.2	78	10	10				33
34	313		3	30	0.4	82	8	10				34
35	314		3	34	0.4	62	18	10				35
36	315		2	46	0.6	74	12	10				36
37	316		4	28	0.2	74	12	10				37
38	317		2	42	0.2	50	10	10				38
39	83 WSS 318		3	38	0.2	56	12	10				39
40	STD C		16	172	0.8	110	72	-				40

VALUES IN PPM UNLESS NOTED OTHERWISE

Certified by *J. Rossbacher*

Rossbacher Laboratory Ltd.

GEOCHEMICAL ANALYSTS & ASSAYERS

CERTIFICATE OF ANALYSIS

TO: CANAMAX RESOURCES INC.
601 - 535 THURLOW ST.
VANCOUVER, B.C. V6E 3L6

2225 S. SPRINGER AVE.,
BURNABY, B.C.
CANADA
TELEPHONE: 299-8910

CERTIFICATE NO. 83256-2
INVOICE NO.
DATE ANALYSED *Aug. 1983*
PROJECT 67037

No.	Sample	pH	Mo	Cu	Ag	Zn	Pb	Au	AS			No.
01	83 WSS 319		3	52	0.2	80	16	10				01
02	320		5	32	0.2	80	14	10				02
03	321		11	20	0.2	82	14	10				03
04	322		5	22	0.2	42	12	10				04
05	323		4	22	0.2	56	10	10				05
06	324		2	26	0.2	82	12	10				06
07	325		4	24	0.4	60	10	10				07
08	326		2	26	0.4	206	14	10				08
09	327		4	30	0.2	138	10	10				09
10	83 WSS 328		4	104	0.0	132	12	10				10
11	329		2	16	0.2	102	10	10				11
12	330		2	16	0.2	82	8	10				12
13	331		2	22	0.2	102	10	10				13
14	83 WSS 332		5	14	1.0	66	14	10				14
15	83 WSS 333		2	31	0.4	136	14	10				15
16	STD B		29	140	0.8	134	94	-				16
17												17
18												18
19												19
20												20
21												21
22												22
23												23
24												24
25												25
26												26
27												27
28												28
29												29
30												30
31												31
32												32
33												33
34												34
35												35
36												36
37												37
38												38
39												39
40												40

VALUES IN PPM UNLESS NOTED OTHERWISE

Certified by *J. Rossbacher*

Rossbacher Laboratory Ltd.

GEOCHEMICAL ANALYSTS & ASSAYERS

2726 E. SPRINGER AVE.
BURNABY, B. C.
CANADA
TELEPHONE: 299-8810

CERTIFICATE OF ANALYSIS

CERTIFICATE NO. 53761-9

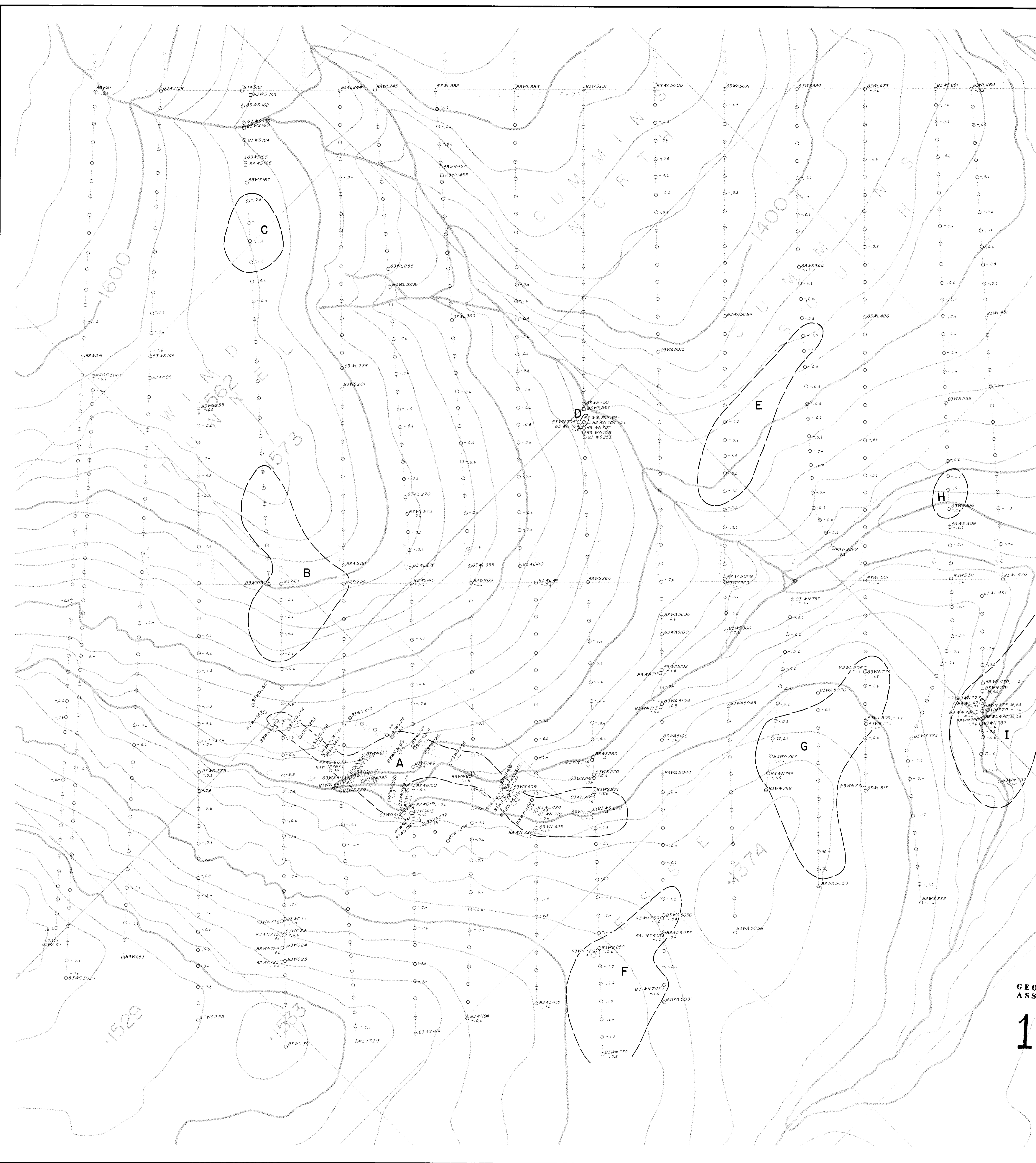
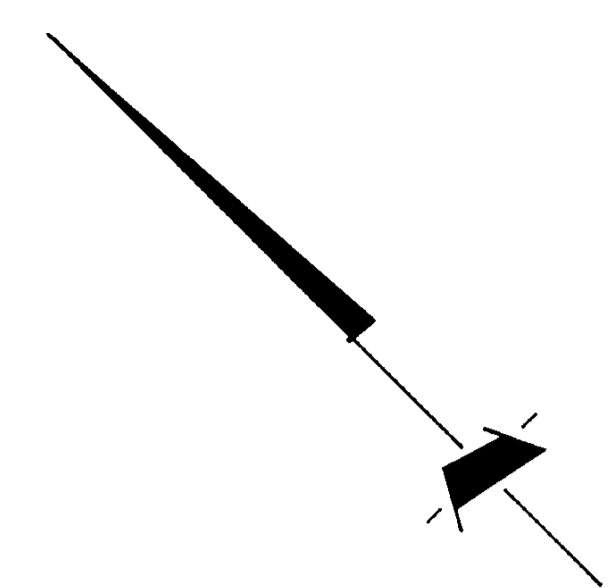
INVOICE NO.

DATE ANALYSED 4/10/03

PROJECT 57037

TO: CANAMAX RESOURCES INC.
601 - 535 THURLOW ST.
VANCOUVER, B.C. V6E 3L6

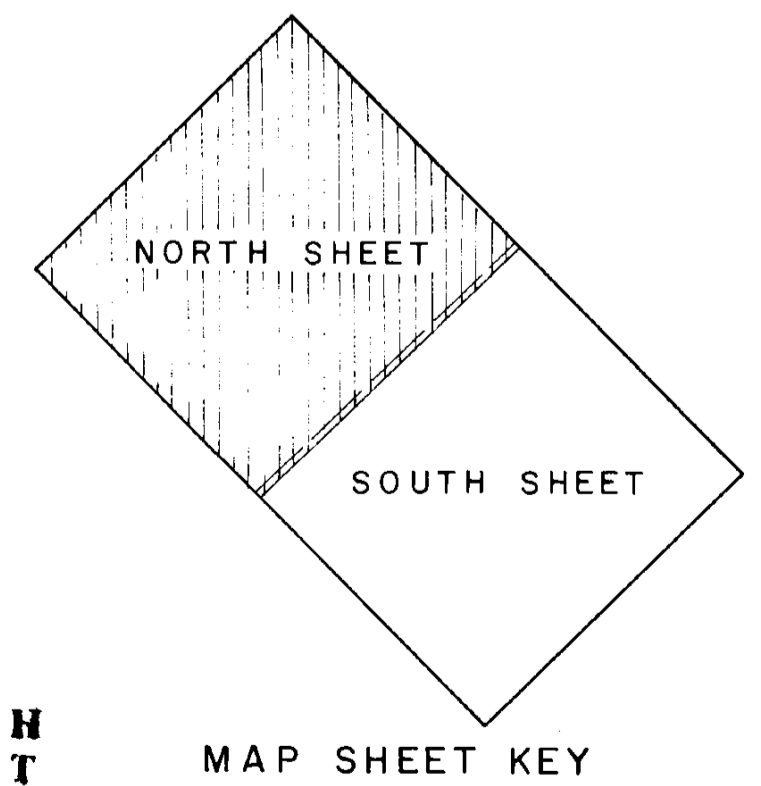
No.	Sample	pH	Mo	Cu	Ni	Co	Mn	Fe	Ag	Zn	Pb	Au	As	No.
01	83 WSS 334		1	40	-	-	-	-	0.3	148	12	10		01
02	335		1	46	-	-	-	-	0.2	150	8	10		02
03	336		1	48	-	-	-	-	0.3	94	6	10		03
04	337		1	18	-	-	-	-	0.2	118	11	10		04
05	338		1	44	-	-	-	-	0.2	156	8	10		05
06	339		1	34	-	-	-	-	0.4	102	11	10		06
07	340		1	41	-	-	-	-	0.4	114	11	10		07
08	341		1	36	-	-	-	-	0.4	94	8	10		08
09	342		1	50	-	-	-	-	0.2	102	8	10		09
10	53 WSS 343		1	42	-	-	-	-	0.2	120	8	10		10
11	344		1	92	-	-	-	-	1.6	106	8	10		11
12	345		1	50	-	-	-	-	0.6	114	8	10		12
13	346		1	56	-	-	-	-	1.4	108	10	10		13
14	347		1	48	-	-	-	-	0.6	90	10	10		14
15	348		1	34	-	-	-	-	1.0	100	12	10		15
16	349		1	20	-	-	-	-	1.2	80	8	10		16
17	350		1	38	-	-	-	-	0.4	74	12	10		17
18	351		1	44	-	-	-	-	0.6	130	10	10		18
19	53 WSS 352		1	36	-	-	-	-	0.6	104	10	10		19
20	353		2	120	-	-	-	-	11	470	10	10		20
21	53 WSS 354		1	34	-	-	-	-	0.4	120	10	10		21
22	355		1	36	-	-	-	-	0.4	88	10	10		22
23	356		1	44	-	-	-	-	0.4	94	10	10		23
24	357		1	38	-	-	-	-	0.4	94	12	10		24
25	358		1	34	-	-	-	-	0.2	104	16	10		25
26	359		1	38	-	-	-	-	0.4	110	20	10		26
27	360		1	34	-	-	-	-	0.4	84	10	10		27
28	361		1	32	-	-	-	-	0.4	110	14	10		28
29	362		1	64	-	-	-	-	0.4	90	8	10		29
30	53 WSS 363		4	78	-	-	-	-	0.6	76	14	10		30
31	364		1	38	-	-	-	-	0.4	72	6	10		31
32	365		1	30	-	-	-	-	0.4	120	28	10		32
33	366		1	38	-	-	-	-	1.6	84	22	10		33
34	53 WSS 367		1	38	-	-	-	-	0.4	74	10	10		34



NOTE -
Labeled anomalous zones referred to in the text

SYMBOLS

- Soil Sample site, sample number; >10ppb Au, >0.2 ppm Ag
- Soil
- Geochanical anomalous zone boundary (values >20ppb Au and/or >0.8 ppm Ag, >100 ppm Pb, >200 ppm Zn, >200 ppm Cu > 10 ppm Mo)
- Trench.
- Grid line.
- Claim boundary.
- Claim unit boundary.
- Stream.
- Topographic contour (contour interval 20 metres).



GEOLOGICAL BRANCH
ASSESSMENT REPORT

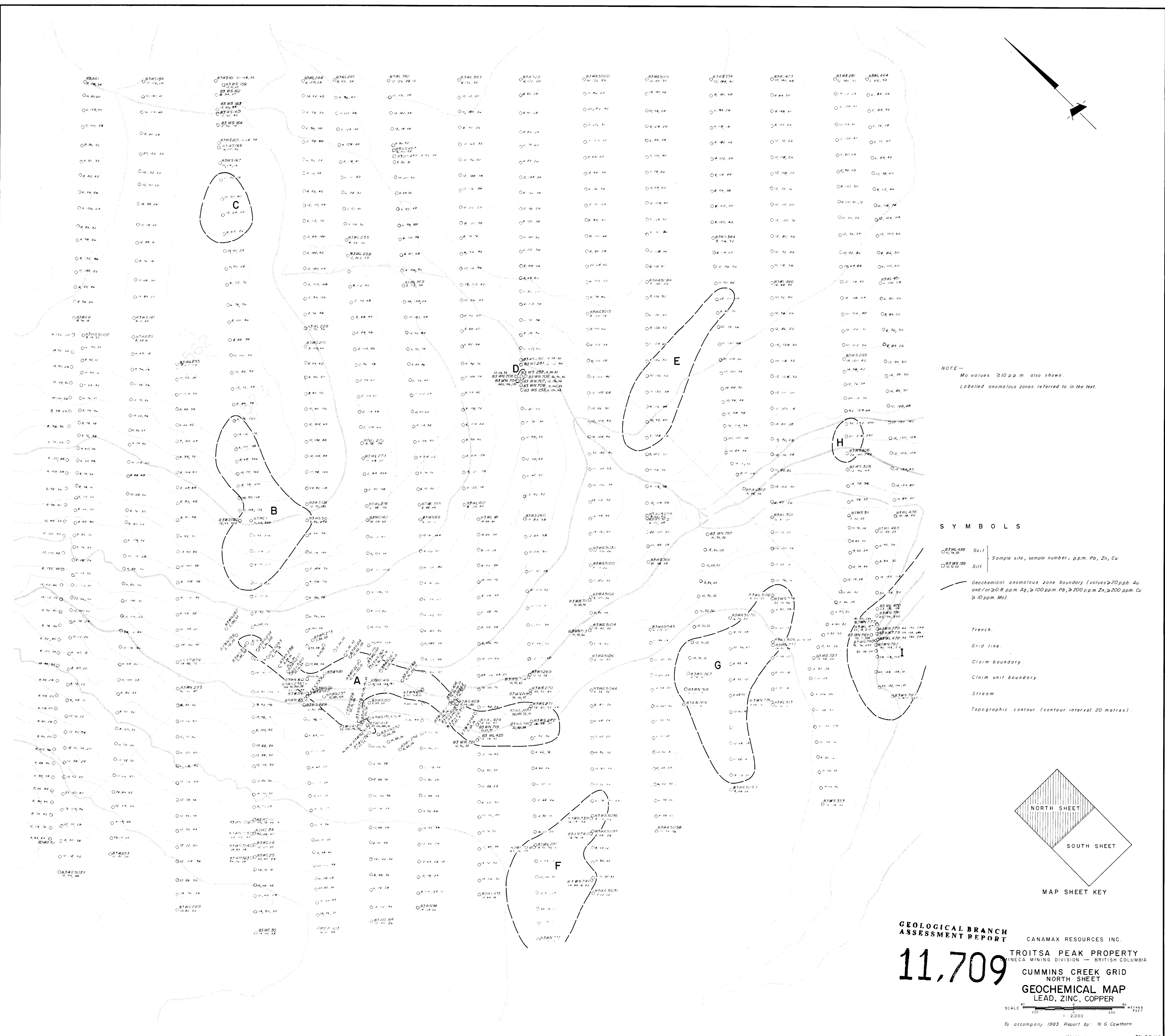
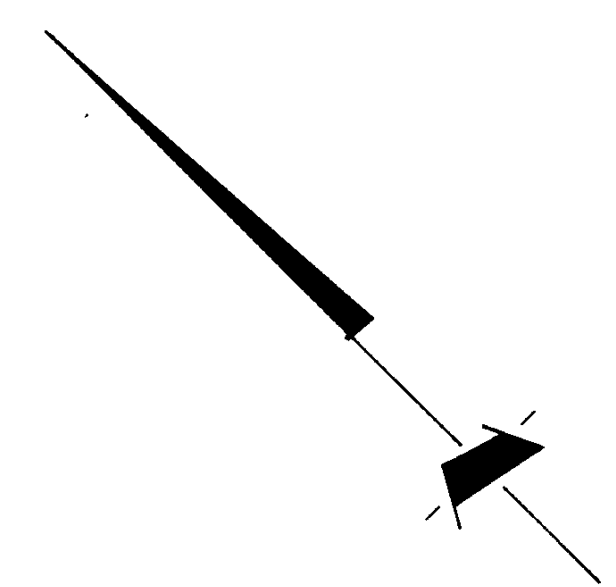
11,709

CANAMAX RESOURCES INC.
TROITSA PEAK PROPERTY
OMINECA MINING DIVISION — BRITISH COLUMBIA
CUMMINS CREEK GRID
NORTH SHEET
GEOCHEMICAL MAP
GOLD, SILVER

SCALE 1:2000 METRES FEET

To accompany 1983 Report by N. G. Cowthorn

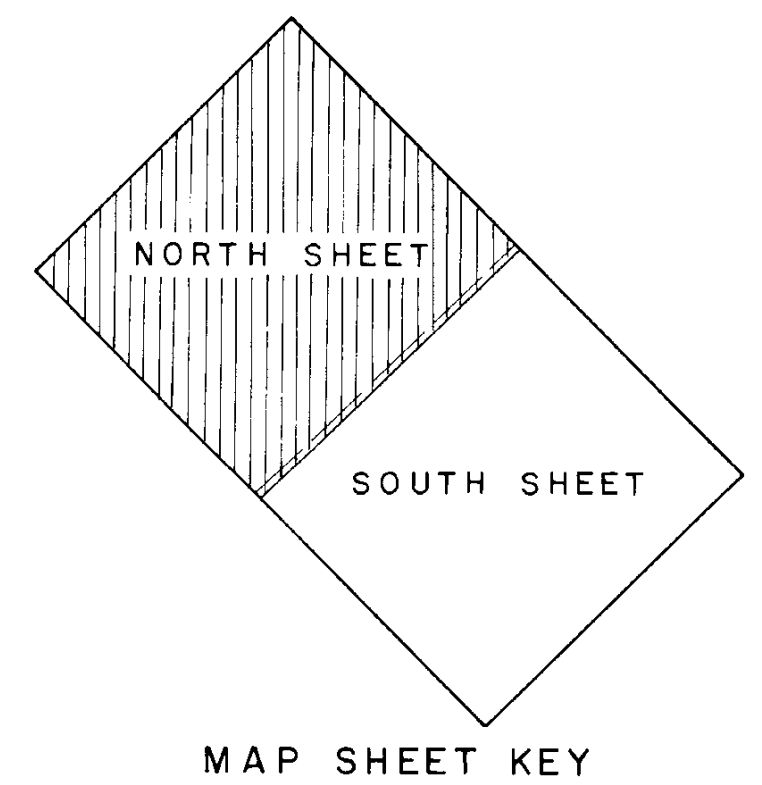
Prepared by *[Signature]* T.N. CK. W.P.
Endorsed by *[Signature]* N.T.S. Ref. 83-2-11
FIG. 3a



NOTE—
 Mo values ≥ 10 ppm also shown.
 Labeled anomalous zones referred to in the text.

SYMBOLS

- Soil | Sample site, sample number; p.p.m. Pb, Zn, Cu.
- Silt
- Geochemical anomalous zone boundary (values ≥ 20 ppb Au and/or ≥ 0.8 ppm Ag, ≥ 100 ppm Pb, ≥ 200 ppm Zn, ≥ 200 ppm Mo).
- Trench.
- Grid line.
- Claim boundary.
- Claim unit boundary.
- Stream.
- Topographic contour (contour interval 20 metres).

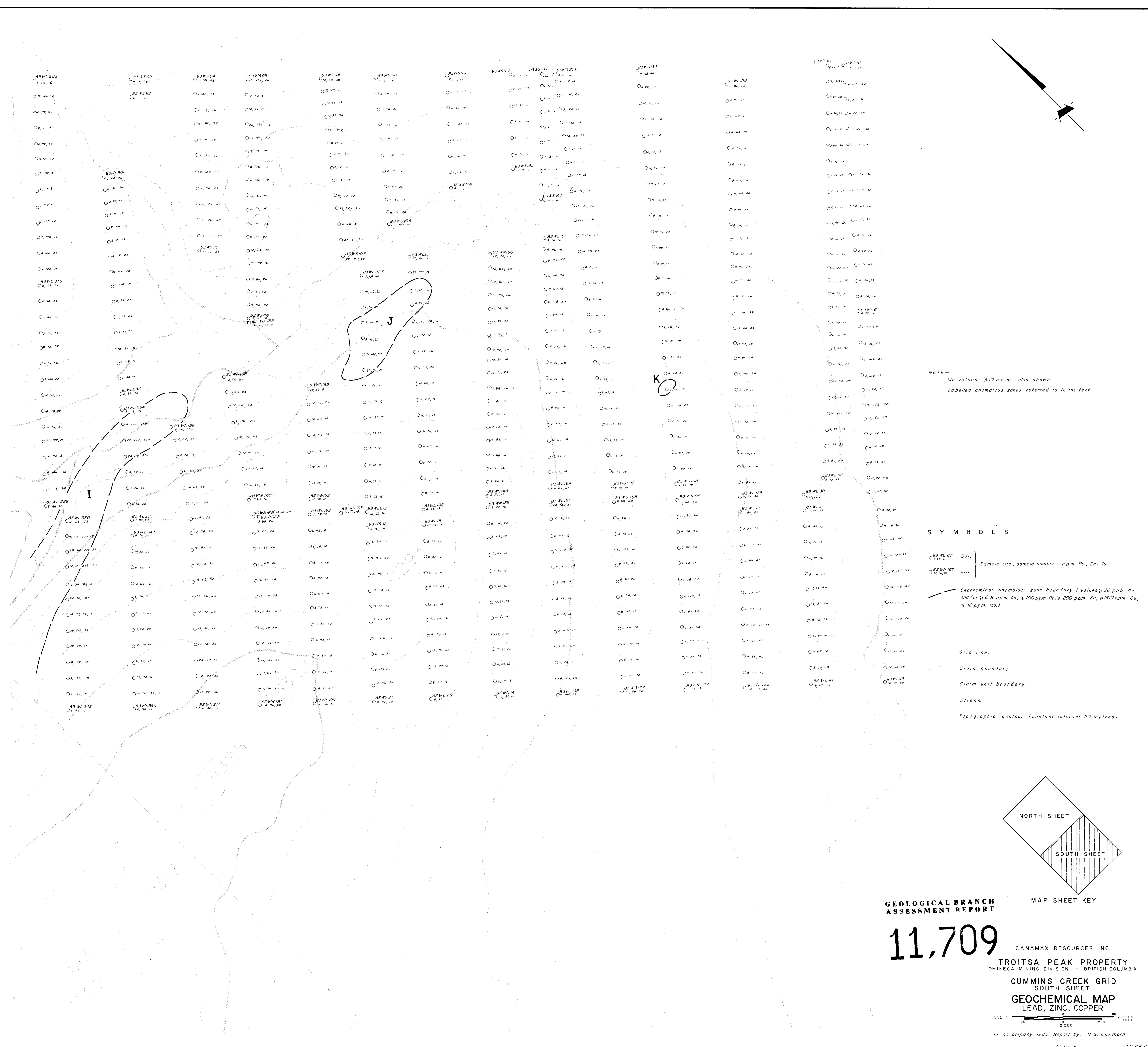
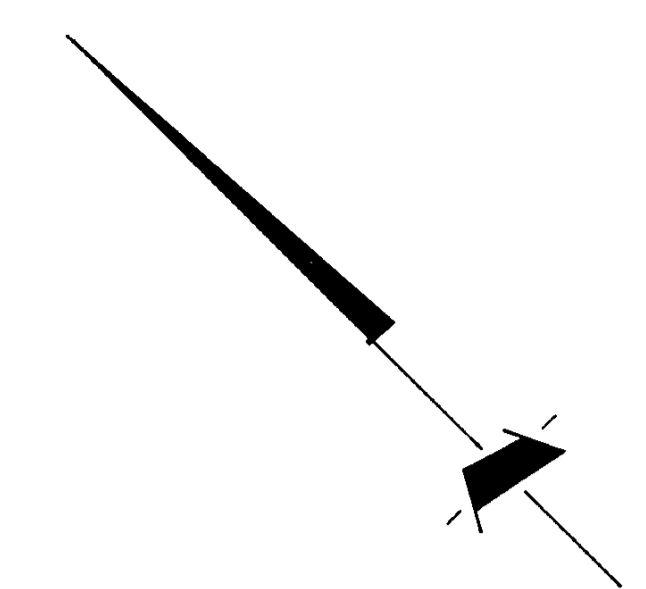


**GEOLOGICAL BRANCH
 ASSESSMENT REPORT**

11,709

CANAMAX RESOURCES INC.
 TROITSA PEAK PROPERTY
 MINERAL DIVISION — BRITISH COLUMBIA
 CUMMINS CREEK GRID
 NORTH SHEET
GEOCHEMICAL MAP
 LEAD, ZINC, COPPER

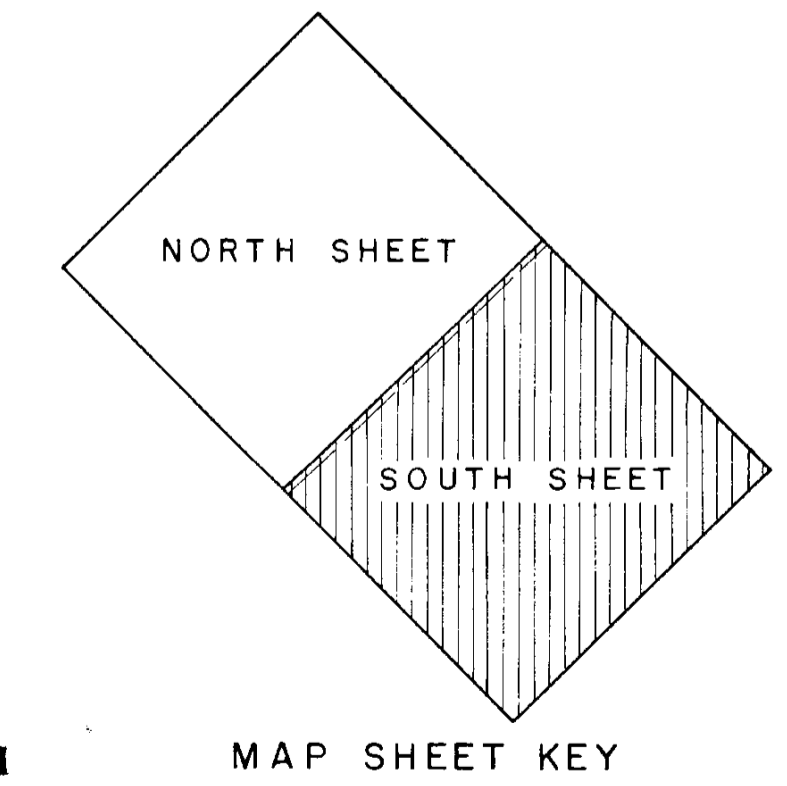
SCALE 1:2000
 Report by: N.G. Cawthron



NOTE—
No values ≥ 10 ppm also shown.
Labelled anomalous zones referred to in the text.

SYMBOLS

- 83WL 67 Soil } Sample site, sample number; ppm Pb, Zn, Cu.
- 83WN 167 Silt }
- Geochemical anomalous zone boundary (values ≥ 20 ppm Au and/or ≥ 0.8 ppm Ag, ≥ 100 ppm Pb, ≥ 200 ppm Zn, ≥ 200 ppm Cu, ≥ 10 ppm Mo)
- Grid line.
- Claim boundary.
- Claim unit boundary.
- Stream.
- Topographic contour (contour interval 20 metres).



**GEOLOGICAL BRANCH
ASSESSMENT REPORT**

11,709

CANAMAX RESOURCES INC.
TROITSA PEAK PROPERTY
OMINECA MINING DIVISION — BRITISH COLUMBIA
CUMMINS CREEK GRID
SOUTH SHEET
GEOCHEMICAL MAP
LEAD, ZINC, COPPER
SCALE 1:2,000
To accompany 1983 Report by: N.G. Cawthorn