

COMINCO LTD.

EXPLORATION

WESTERN DISTRICT

REPORT ON SOIL GEOCHEMISTRY

VINE 3

Fort Steele Mining Division

Cranbrook Area

N.T.S. 82G/5

Lat: 49° 21'

Long: 115° 52'

OWNER

COMINCO LTD.

Kootenay Exploration
1051 Industrial Road No. 2
Cranbrook, B.C.
V1C 4K7

Work Performed during June, 1983

Report by:

M. Waskett-Myers
Technician

Under the Supervision of:

D. Anderson
Project Geologist

11,771

GEOLOGICAL
BRANCH
ASSESSMENT
REPORT

TABLE OF CONTENTS

	Page
1.00 SUMMARY	1
2.00 INTRODUCTION.	1
2.10 Property Definition	1
2.20 Location and Access	1
2.30 Topography and Vegetation	1
2.40 Objectives.	1
3.00 GEOCHEMISTRY.	1
3.10 Sampling Procedure.	1
3.20 Analytical Procedure.	2
3.30 Conclusions	2
STATEMENT OF EXPENDITURES	3
AFFIDAVIT	4
STATEMENT OF QUALIFICATIONS	5
PLATE 1 Location Map.	Attached
PLATE 2 Geochemistry Lead Values (ppm).	"
PLATE 3 Geochemistry Zinc Values (ppm).	"

REPORT ON SOIL GEOCHEMISTRY

VINE 3 CLAIM

FORT STEELE MINING DIVISION

1.00 SUMMARY

The Vine 3 geochemical program consisted of two contour lines and an extension of the geochemical grid done in 1966. A total of 117 samples were collected and analyzed for Pb and Zn at Cominco's lab in Vancouver. Expenditures on this survey were \$1,535.95.

2.00 INTRODUCTION

2.10 Property Definition

The Vine 3 is 100% Cominco owned. The work was performed by Kootenay Exploration (Cominco Ltd.).

2.20 Location and Access

The Vine 3 grid is located approximately 17 km SW of Cranbrook. Access is via number 3 highway to Green Bay then by 4 wheel drive road to the property.

2.30 Topography and Vegetation

The survey grid is situated in an area of moderate relief at elevations of 1200 metres to 1450 metres above sea level.

The area is covered with Lodgepole Pine, Fir and Larch with scrub brush in some areas.

2.40 Objectives

The geochemical survey and trenching was undertaken to explore for Pb/Zn deposits in Precambrian rocks of the Aldridge formation.

3.00 GEOCHEMISTRY

3.10 Sampling Procedure

The property road was used as a base line and lines were run at 293° and 113°. The lines were 130 metres apart and were sampled every 30 metres.

The contour lines were at 1200 metres and 1300 metres these were sampled every 50 metres.

The samples were collected from the 'B' horizon at depths of 10 to 20 centimeters, using a shovel.

3.20 Analytical Procedure

One half gram of -80 mesh soil is weighed into a test tube, 5 mls of 20% HNO₃ is added. The samples are digested for 90 minutes in a water bath at 95° C (samples are shaken every 15 minutes). After digestion the sample is made up to 10 mls with deionised water shaken and run on the A.A. for Pb, Zn. Background correction is used for Pb determinations.

3.30 Conclusions

The geochemistry program delineated a previously found anomaly, this anomaly was trenched in 1983. Threshold selected was 40 ppm for lead and 200 ppm for zinc.

Report by: *M. D. Waskett-Myers*
M.D. WASKETT-MYERS
Technician

Endorsed by: *D. Anderson*
D. ANDERSON, P.Eng.
Project Geologist

Approved by: *John Hamilton*
J.M. HAMILTON, P.Eng.
Chief Geologist
Kimberley

Copies to:

Mining Recorder (2 copies) ✓
Western District, Exploration
Kootenay Exploration

Approved for
Release by: *G. Harden*
G. HARDEN, Manager
Exploration, Western
District
Vancouver

EXHIBIT "A"
STATEMENT OF EXPENDITURES
SOIL GEOCHEMISTRY
VINE 3 CLAIM
FORT STEELE MINING DIVISION

Salaries

G.R. Haryett	2 days @ \$81/day	\$ 162.00
R.E. Anselmo	2 days @ \$81/day	162.00
D.W. Osterhold	1 day @ \$70/day	70.00
M.D. Waskett-Myers	Supervision - Field - 2 days @ \$145/day	290.00
	Office - Report & Map Preparation - 2 days @ \$145/day	290.00

Materials

Flagging, Sample Bags, Cotton 50.00

Geochem Assays

117 samples @ \$3.35 each 391.95

Transportation

4x4 Truck - 3 days @ \$40/day 120.00

\$1,535.95

M. Waskett-Myers
M.D. WASKETT-MYERS
Technician

IN THE MATTER OF THE

B.C. MINERAL ACT

AND

IN THE MATTER OF A SOIL GEOCHEMISTRY PROGRAM

CARRIED OUT ON THE VINE 3 MINERAL CLAIM

in the Fort Steele Mining Division of the
Province of British Columbia

A F F I D A V I T

I, M. Waskett-Myers, of the City of Cranbrook in the Province of British Columbia, make Oath and say:

1. That I am employed as a Technician with Cominco Ltd. and as such, have a personal knowledge of the facts to which I hereinafter depose;
2. That annexed hereto and marked as Exhibit "A" to this my Affidavit is true copy of expenditures incurred on a Soil Geochemistry program, on the Vine 3 mineral claim.
3. That the said expenditures were incurred between the 2nd day of June, 1983 and the 30th day of June, 1983, for the purpose of mineral exploration on the above noted claim.

M. Waskett-Myers
M.D. WASKETT-MYERS
Technician

COMINCO LTD.


EXPLORATION

WESTERN DISTRICT

STATEMENT OF QUALIFICATIONS

M.D. WASKETT-MYERS has worked in Mineral Exploration for the past thirteen years. He spent the last five years working for Cominco Ltd., principally in the field of geochemistry.

I consider him qualified to prepare this report.

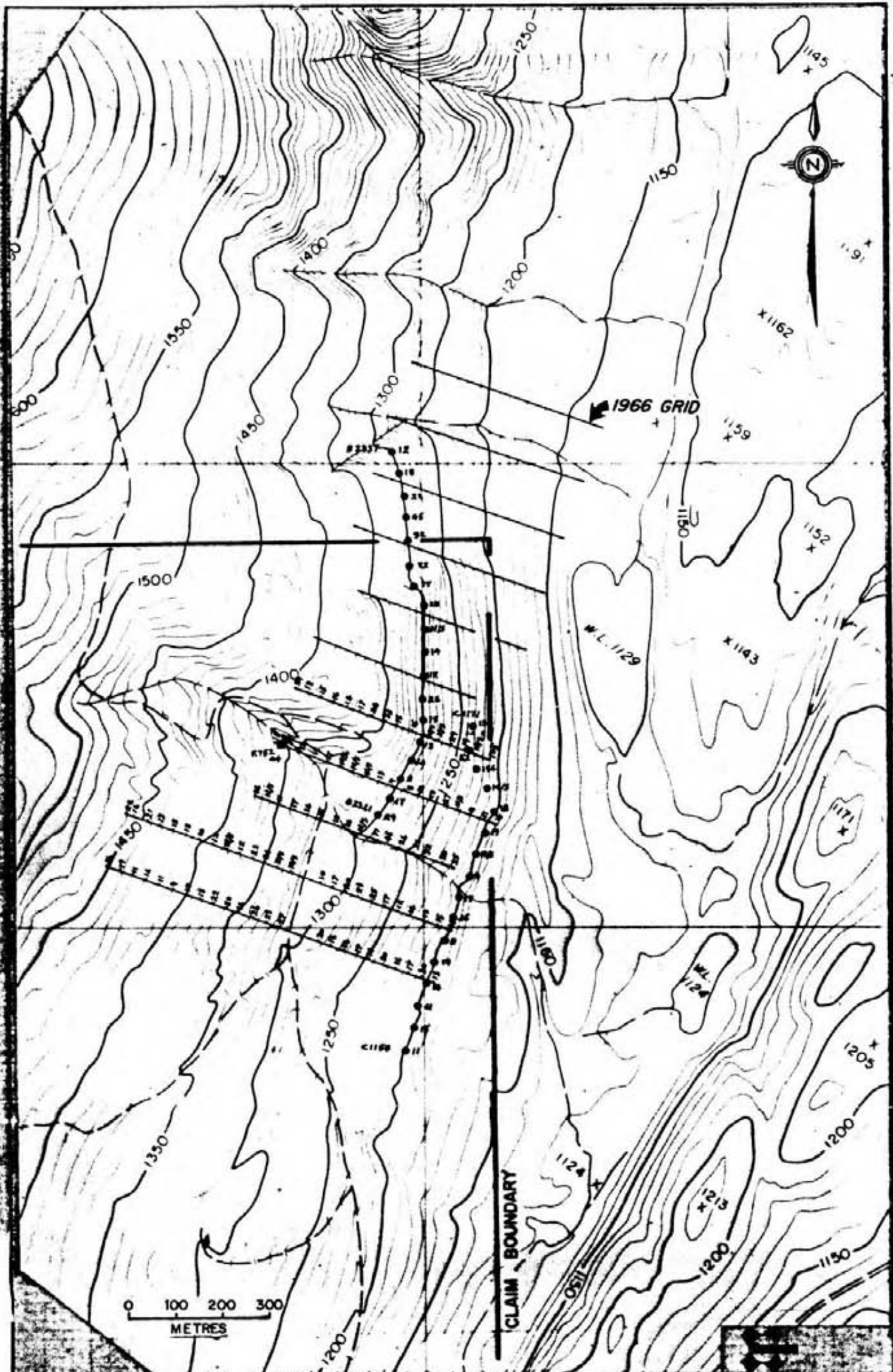

DOUGLAS ANDERSON, P. Eng.
Project Geologist



Drawn by:		Traced by:	
Drawn by	Date	Revised by	Date

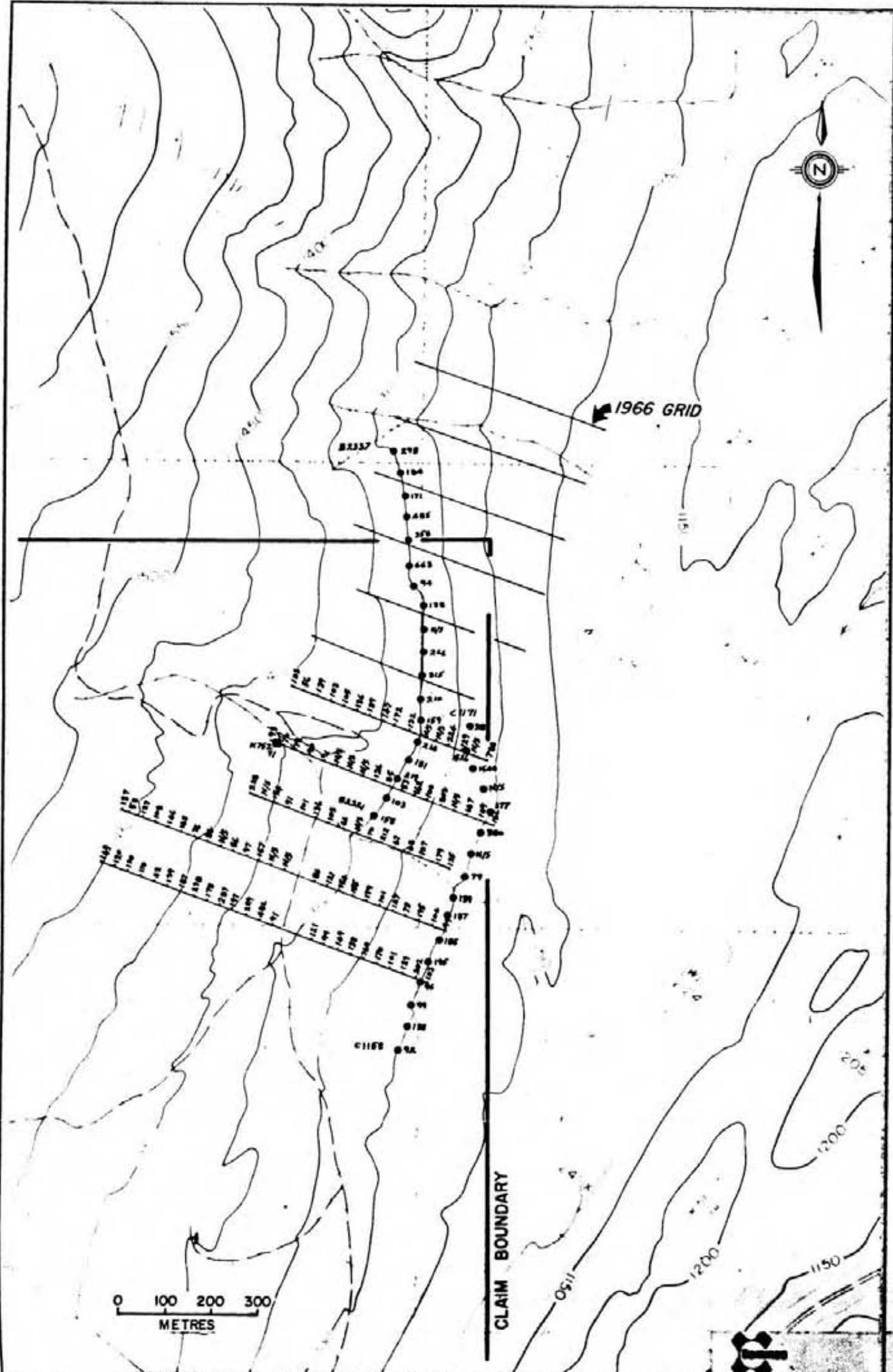
LOCATION MAP

Scale: 1: 500,000 Date: NOV. 1983 Plate: 1



Drawn by: M.W.-M		Traced by:	
Revised by	Date	Revised by	Date

VINE 3 (FORS) GEOCHEMISTRY
LEAD VALUES (ppm)



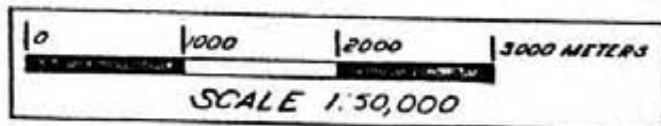
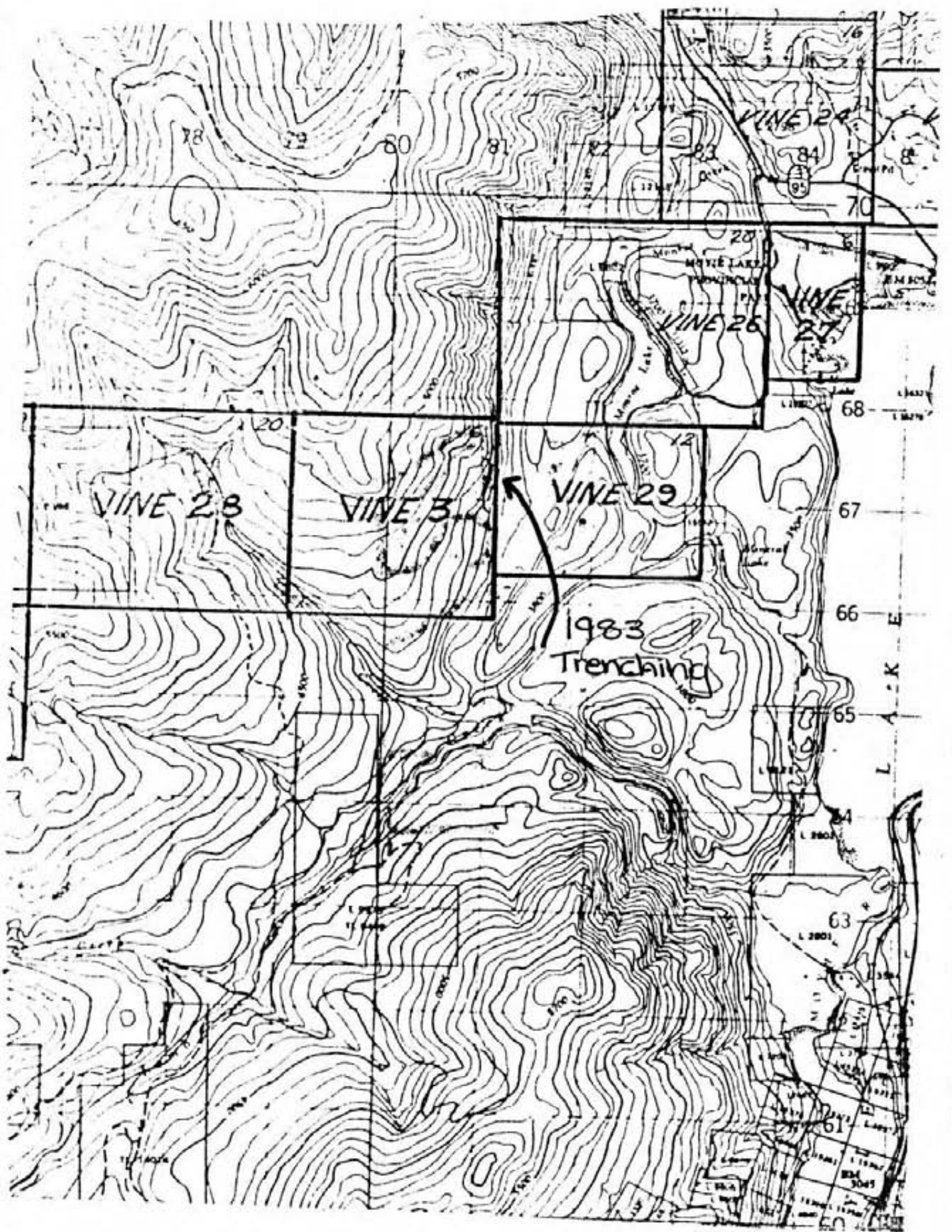
Drawn by: MW-M		Traced by:	
Revised by	Date	Revised by	Date

VINE 3 (FORS) GEOCHEMISTRY
ZINC VALUES (ppm)

Scale: 1:10,000

Date: NOV. 1983

Plate: 3



Drawn by:		Traced by:	
Revised by	Date	Revised by	Date

VINE 3 TRENCH

Scale:

Date: Oct. 1983

Plate: