

PROSPECTING REPORT ON THE
EMMA 1 AND 2 CLAIMS - BIGFOOT PROPERTY

NTS: 92H/5W

NEW WESTMINSTER MINING DIVISION

LATITUDE: 49 26'N
LONGITUDE: 121 51'W

OWNER: LORNEX MINING CORPORATION LTD
P O Box 10335
1650, 609 Granville Street
Vancouver, B C
V7Y 1G5

GEOLOGICAL BRANCH
ASSESSMENT REPORT

11,740

M L Serack
December 1 1983

TABLE OF CONTENTS

	Page No:
Introduction	1
Location and Access	1
Claims	1
Prospecting	1
Conclusions	9
Cost Statement	9
Appendix I	

INTRODUCTION

May 12-13 and May 16-19 were spent prospecting the Emma 1 and 2 claims. Five short soil lines were run to extend the grid. Few new outcrop exposures were discovered.

LOCATION AND ACCESS (Figure 1)

The Emma claims are located on the west side of Harrison Lake, approximately 10 miles north of Harrison Hot Springs and just south of Simms Creek. The area is covered with dense cedar, hemlock and associated undergrowth.

Access can be gained by following the Lougheed Highway to the Sasquatch Inn - Hemlock Valley Road. From this point travel is northerly past the Weaver Creek spawning grounds on the West Harrison Lake logging road for about 15 km.

CLAIMS (Figure 2)

The Emma 1 and 2 claims were staked on March 8 1983 to cover a fraction existing between the Woolybooger and Bigfoot 5 claims. These claims are owned by Lornex Mining Corporation Ltd.

PROSPECTING

The Bigfoot property has had numerous owners since the early 1960's. Geology was done over the entire area in 1982 by Lornex Mining Corporation Ltd and geochemical and geophysical surveys were run. This programme was undertaken to fill in the gaps left by that programme and delineate further outcrops. In all, very few additional outcrops were found. These were added to the map (Figure 3). In addition, soil lines were run on the eastern part of the grid. Samples were analysed for Ag, As, Bi, Cd, Co, Cu, Mn, Pb, Sb and Zn by ICP analysis and Au by standard geochemical techniques. Results of this work are plotted on figures 4, 5 and 6.

A complete gradation from Rhyolite to Andesite exists across the property. It is further complicated by alteration overprinting and bleaching. The following is a brief description of the rock types observed during the course of prospecting.

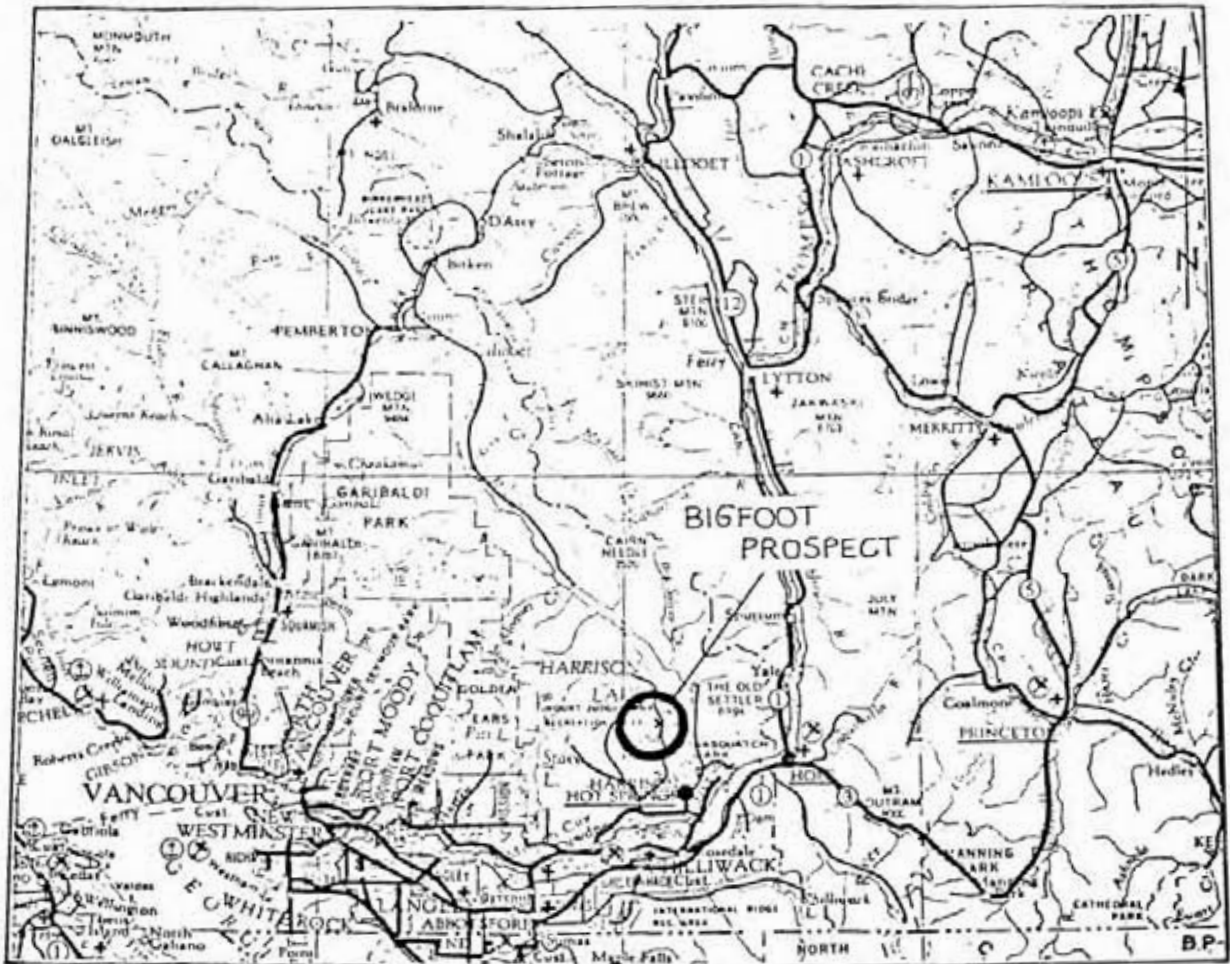
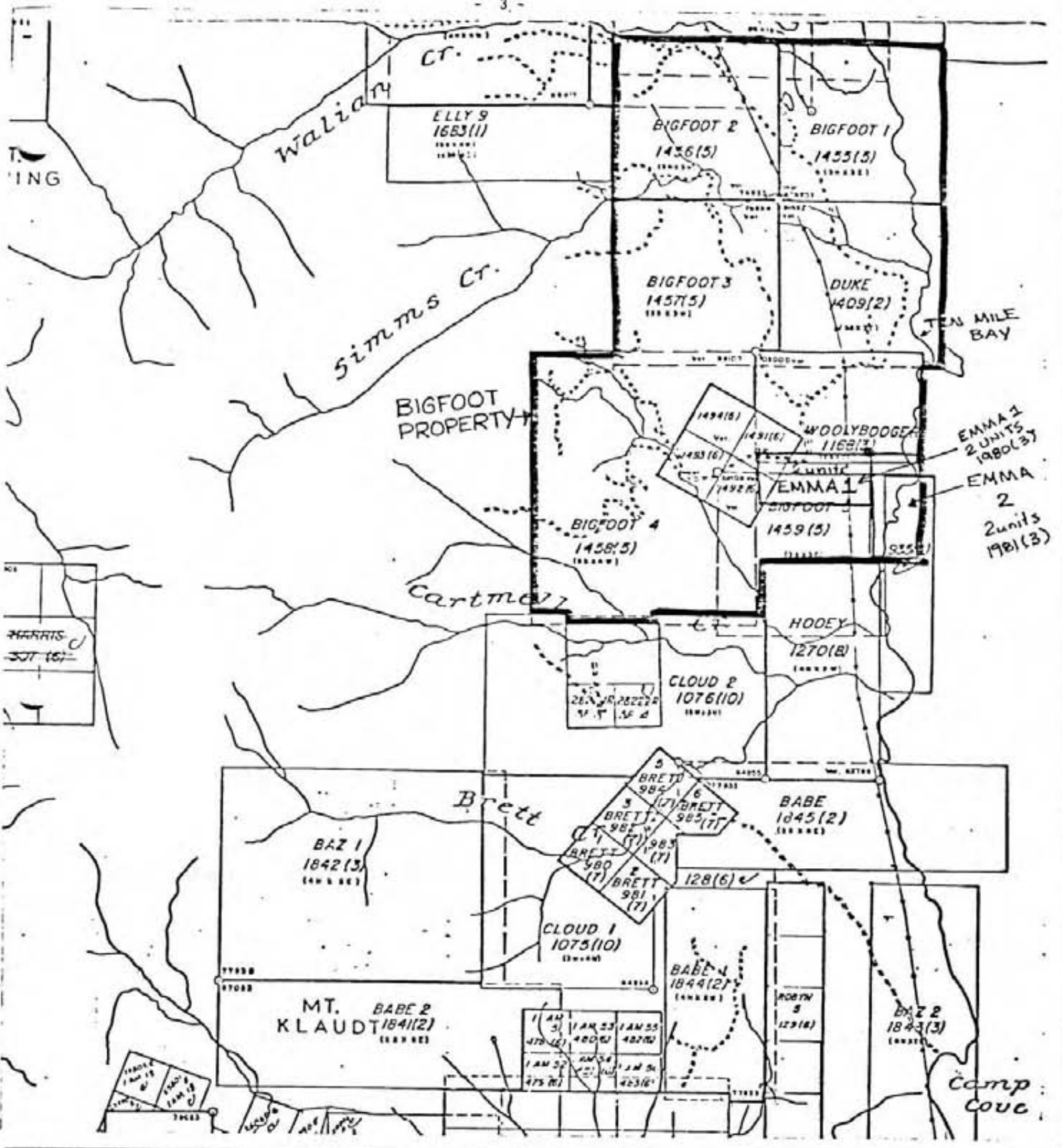


FIG.1. Location map for Vancouver - Hope - Princeton areas.



Black



LORNEX MINING CORPORATION LTD.

Handwritten signature

CLAIM MAP

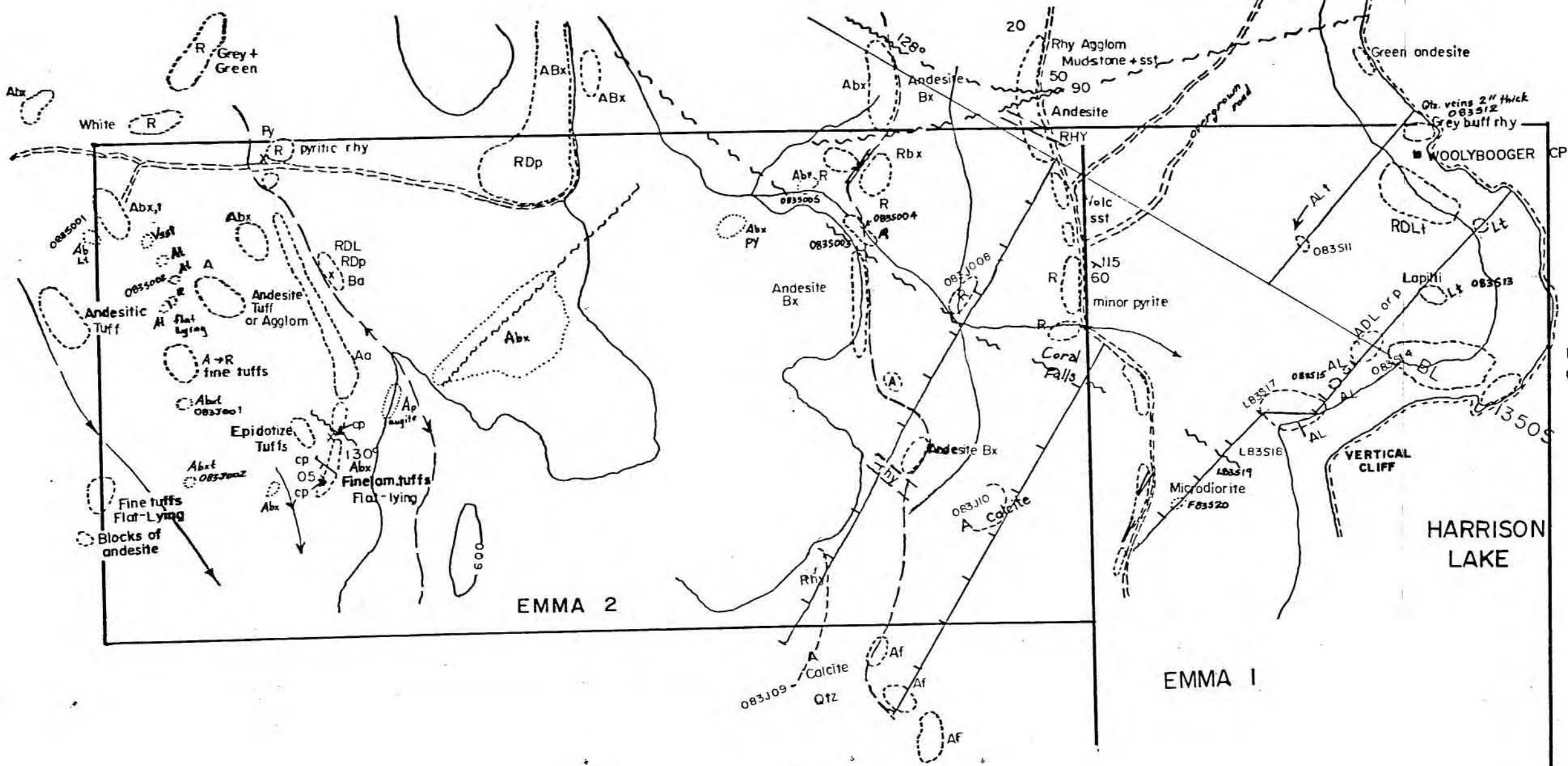
NTS: 92H/5W

Figure - 83 - 2

Scale: 1:50,000

- LAPILLI TUFF - light beige colour with white lapilli; 1mm diameter matrix grains; 2-5% lapilli; 1% disseminated pyrite; some epidote alteration; fragments are angular and >2cm in size.
- VOLCANIC SANDSTONE - White to beige weathering white brown; highly altered; grains 1-2mm in size; some dark grey less altered bands. Occasional interbeds of black mudstone with belamnites and iron rich bands. Mn staining evident in places.
- ANDESITIC TUFF - 1% disseminated pyrite with alteration halos; brecciated, calcite veins and vugs; grades into Rhyolite tuff; dark grey green.
- BANDED RHYOLITE-TUFF - fine grained quartz eyes in light grey white tuff; appears sheeted in places; cherty fragments; weathers rusty brown.
- ANDESITE FRAGMENTAL (BRECCIA) GRADING TO DACITE - coarse green "tuff" with larger fragments; contains pyrite blebs up to 1 cm across, clasts up to 2cm in size; weathers rusty to buff; quartz-calcite veining; matrix grains up to 3mm in size.
- AUGITE ANDESITE-FLOW AND FRAGMENTAL - as above but a finer grained matrix with phenocrysts of augite and feldspar in the ground mass.
- RHYOLITE AND ANDESITE FLYSCH/FRAGMENTAL - abundant rhyolite and andesite clasts 2-40cm in diameter both angular and rounded. Some limestone clasts containing crinoid stems; crude bedding; calcareous tuff matrix.
- MICRODIORITE/GABBRO - dark grey black rock weathering rusty black contains about 35% fine grained mafic minerals 60-70% dark feldspars; does not appear to have a high specific gravity.

Soil samples were taken in good red brown oxidized soil beneath a volcanic ash layer. The sampled horizon was between 20-30cm deep. Samples were placed in Kraft paper bags and shipped to Min En Laboratories for analysis. Appendix I contains analytical procedure and analytical data.



Med fine gr. RD Lapilli Green

GEOLOGICAL BRANCH ASSESSMENT REPORT

11,740

LEGEND

ROCKTYPE	TEXTURE	SYMBOL
<input type="checkbox"/> R Rhyolite	p porphyritic	strike and dip
<input type="checkbox"/> RD Rhyodacite	bx breccia	fault
<input type="checkbox"/> D Dacite	a agglom	outcrop
<input type="checkbox"/> A Andesite	t tuffs	dyke
<input type="checkbox"/> B Basalt	L lapilli	contact
<input type="checkbox"/> Va Volc sandstone	f flows	contour
<input type="checkbox"/> T Tuffs undivided generally v. fine silicic	X mineralization	stream
<input type="checkbox"/> Di Diorite	cp chalcopyrite	road
<input type="checkbox"/> MD Microdiorite	sph sphalerite	soil line and sample location
<input type="checkbox"/> S Sediments generally dark shales / mudstones	gn galena	rock sample
	Ba barite	
	py pyrite	
	am amygdaloidal	
	ssf sandstone	

MODIFIED AFTER PRICE, 1982

LORNEX MINING CORPORATION LIMITED

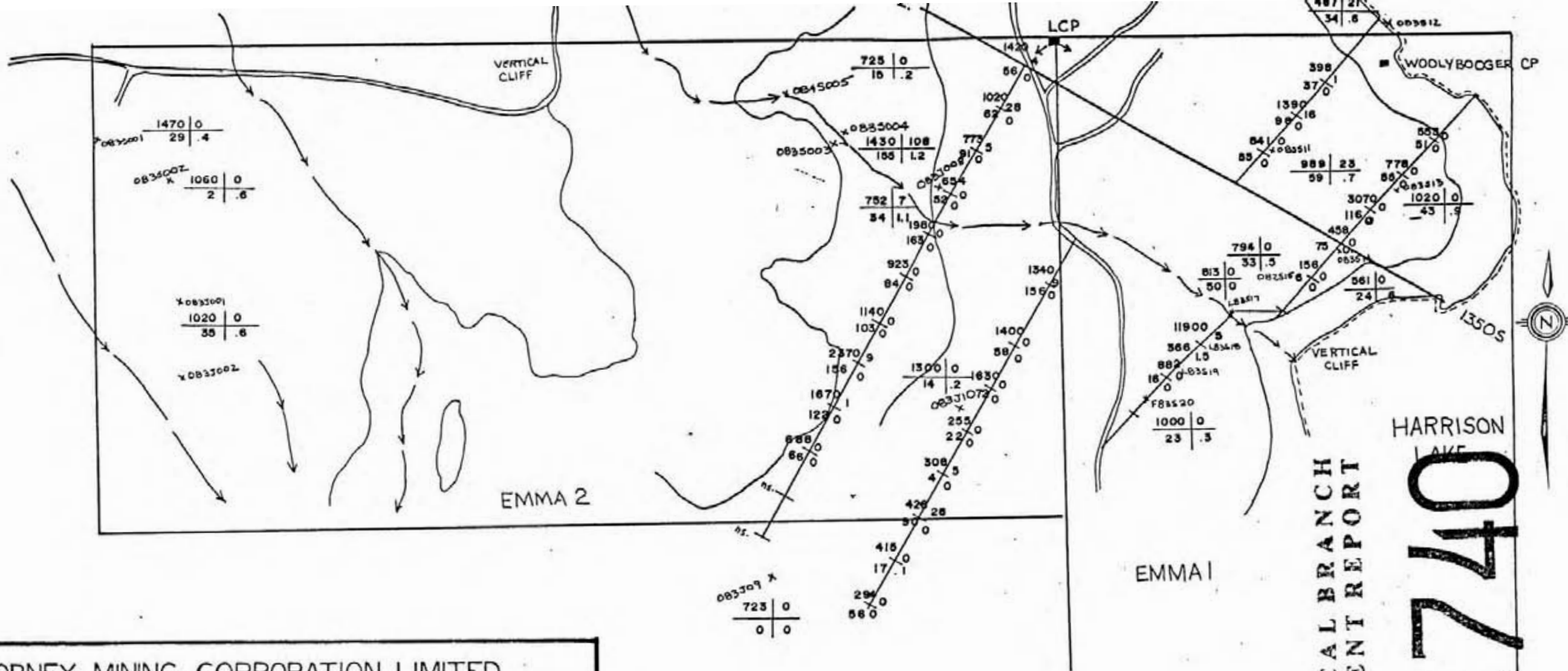
EMMA 1 & 2 PROSPECTING MAP

BIGFOOT PROPERTY 92 H/5W

SCALE: 1,5000

DECEMBER 1 1983 FIGURE: 83 - 3

M. Kerack



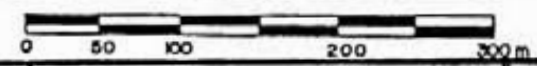
GEOLOGICAL BRANCH
 ASSESSMENT REPORT
11,740
 HARRISON LAKE

LORNEX MINING CORPORATION LIMITED

EMMA 1 & 2 PROSPECTING MAP
 GEOCHEMISTRY - Mn, Pb, Zn, Ag

BIGFOOT-PROPERTY 92 H/ 5W -

SCALE: 1,5000

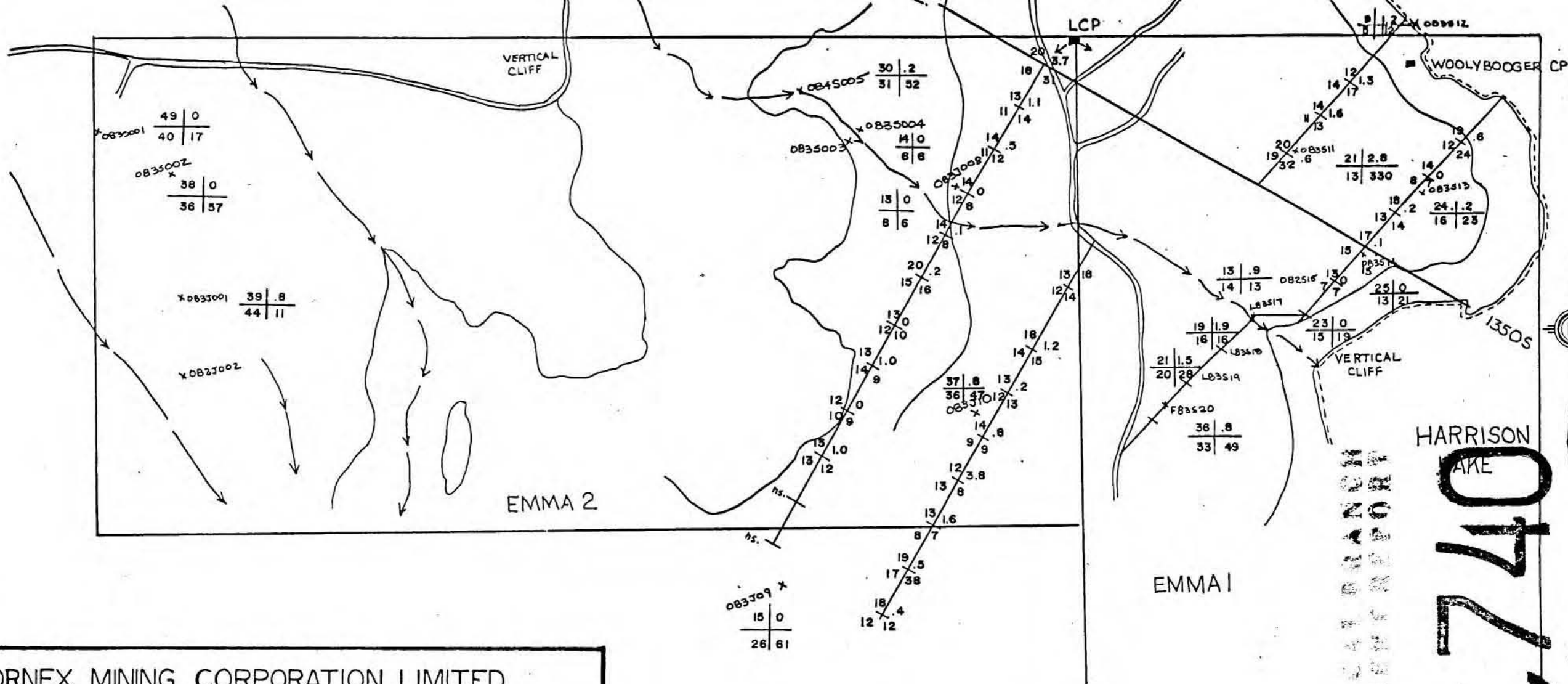


DECEMBER 1 1983

FIGURE 83-4 *M. J. ...*

Mn ppm	Pb ppm
Zn ppm	Ag ppm

- contour
- stream
- road
- soil line and sample location
- rock sample

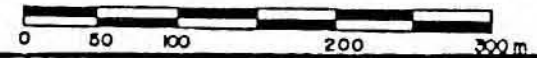


LORNEX MINING CORPORATION LIMITED

EMMA 1 & 2 PROSPECTING MAP
GEOCHEMISTRY - Bi, Cd, Co, Cu

BIGFOOT-PROPERTY 92 H/ 5W

SCALE: 1,5000



DECEMBER 1 1983

FIGURE: 83-5 *W. H. Mack*

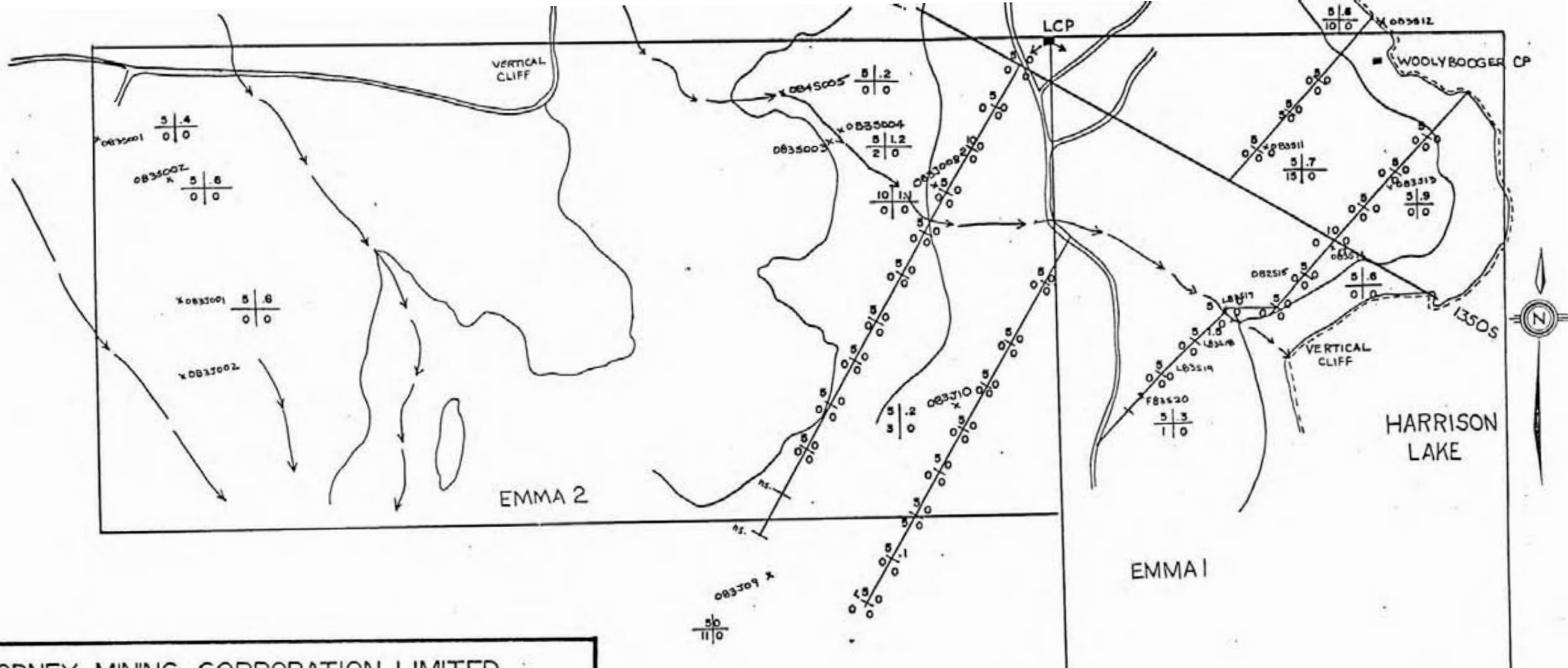
Bi ppm	Cd ppm
Co ppm	Cu ppm

- contour
- stream
- road
- soil line and sample location
- rock sample

GEOLOGICAL REPORT
ASSEMBLY REPORT

HARRISON LAKE

11740



LORNEX MINING CORPORATION LIMITED

EMMA 1 & 2 PROSPECTING MAP
GEOCHEMISTRY - Au, Ag, Sb, As

BIGFOOT-PROPERTY 92 H/ 5W -

SCALE: 1,5000

DECEMBER 1, 1983 FIGURE: 83-6 *M. L. Lorne*

Au ppb	Ag ppm
Sb ppm	As ppm

- contour
- stream
- road
- soil line and sample location
- 083JII rock sample

CONCLUSIONS

Weak Zn "highs" greater than 100 ppm can be detected in six of the samples but no anomalous "zone" can be determined from the limited sampling. Precious metal values were non-existent. All other values were at background levels.

COST STATEMENT

Labour Costs

M L Serack - 4 days x \$125/day	\$500.00	
B Jefferson - 4 days x \$ 75/day	300.00	
	<u>\$800.00</u>	\$ 800.00

Camp costs

8 man days x \$20/day	\$160.00	\$ 160.00
-----------------------	----------	-----------

Transportation

1 3/4 suburban 4 x 4 - 4 days x \$1,010/mth	\$135.00	\$ 135.00
---	----------	-----------

<u>Field Supplies</u> : bags, flagging, etc	\$ 50.00	\$ 50.00
---	----------	----------

<u>Report Preparation</u>	\$100.00	\$ 100.00
---------------------------	----------	-----------

Analyses

15 rock:10 element ICP:Au geochem x \$13.25	\$198.75	
29 soil:10 element ICP:Au geochem x \$11.10	321.90	
	<u>\$520.65</u>	\$ 520.65

TOTAL

\$1,765.65

STATEMENT OF QUALIFICATIONS

I, Marjorie L Serack, with business address at Suite 1650, 609 Granville Street, Vancouver, British Columbia V7Y 1G5 do hereby state:

- 1) I hold a B Sc (Honours) Degree in Geology from the University of Saskatchewan (1979).
- 2) I have been practicing my profession for five years, being employed by such firms as Saskatchewan Mining Development and Cominco Limited.
- 3) That I am presently employed by Lornex Mining Corporation Ltd.



M L Serack
Field Geologist

December 1 1983

CERTIFICATION

I, DAVID R BUDINSKI of the City of North Vancouver in the Province of British Columbia hereby certify as follows:

- 1) That I am a registered Professional Geologist in the Province of Alberta and a Fellow of the Geological Association of Canada.
- 2) That I am presently employed by Lornex Mining Corporation Ltd of Vancouver, British Columbia as Manager of Exploration.
- 3) That I have practiced my profession for the past 28 years since graduation from the University of Alberta in 1955 with a B Sc Degree in Geology.
- 4) That I directed the exploration programme on the Bigfoot property conducted by Ms M L Serack in May 1983.

Dated at Vancouver, British Columbia this 1st day of December 1983.

D R Budinski

D Budinski

APPENDIX I

COMPAN. (Lornex Mining)

GEOCHEMICAL ANALYSIS DATA SHEET

FILE No. 3-286

PROJECT No.: Emma

MIN - EN Laboratories Ltd.

DATE: May 27,

ATTENTION: D. Budinski, M. Serack

705 WEST 15th ST., NORTH VANCOUVER, B.C. V7M 1T2
PHONE (604) 980-5814

1983.

Sample. Number	6 81	10 86	15 90	20 95	25 100	30 105	35 110	40 115	45 120	50 125	55 130	60 135	65 140	70 145	75 150	80 155	80 160
			Cu ppm	Pb ppm	Zn ppm	Ni ppm	Co ppm	Ag ppm	Fe ppm	Hg ppb	As ppm	Mn ppm	Au ppb				
1675E1																	5
																	5
1675E1																	5
1750E1																	5
																	5
																	5
																	5
																	5
																	10
1750E1																	5
L83S17																	5
																	5
L83S19																	5
L1500E																	5
																	5
																	5
																	5
																	5
																	5
																	5
																	5
L1500E																	5
L1375E																	5
																	5
																	5
																	10
																	5
																	5
																	5
																	5
																	5
																	5
																	5
																	5
																	5
L1375E																	5

no sample

[Handwritten signature]

COMPAN (Lornex Mining)

PROJECT No.: Emma

ATTENTION: D. Budinski, M. Serack

GEOCHEMICAL ANALYSIS DATA SHEET

MIN - EN Laboratories Ltd.

705 WEST 15th ST., NORTH VANCOUVER, B.C. V7M 1T2
PHONE (604) 980-5814

FI .No. 3-286

DATE: May 27

1983.

6	10	15	20	25	30	35	40	45	50	55	60	65	70	75	80
Sample. No.	Cu ppm	Pb ppm	Zn ppm	Ni ppm	Co ppm	Ag ppm	Fe ppm	Hg ppb	As ppm	Mn ppm	Au ppb				
81	86	90	95	100	105	110	115	120	125	130	135	140	145	150	160
083S11							•					5			
12							•					5			
13							•					5			
14							•					5			
083S15							•					5			
F83S20							•					5			
083S002							•					5			
004							•					5			
083S005							•					5			
083J004							•					5			
083J001							•					5			
083S001							•					5			
083J008							•					5			
083J009							•					5			
083J010							•					5			
							•								
							•								
							•								
							•								
							•								
							•								
							•								
							•								
							•								
							•								
							•								
							•								
							•								
							•								
							•								

[Handwritten signature]

MINEN LABS ICP REPORT

PAGE 1 OF 1

FILE NAME: 3-286/R/P1
 ACT NAME: GE03

DATE: MAY 26, 1983
 COMPANY: LORNEX
 PROJECT: EMMA

----- CONCENTRATION IN PPM -----

	AG	AS	BI	CD	CO	CU	MN	PB	SB	ZN	
083S11	.7	0	21	2.8	13	330	989	23	15	59	Andesitic Lapilli Tuff
083S12	.6	0	9	1.2	5	112	487	21	10	34	Rhyolite with Quartz Veins
083S13	.9	0	24	.2	16	23	1020	0	0	43	Lapilli Tuff
083S14	.6	0	25	0	13	21	561	0	0	24	Andesite/Dacite Fragmental
083S15	.5	0	23	0	15	19	794	0	0	33	Andesite Fragmental
F83S20	.3	0	36	.8	33	49	1000	0	1	23	Microdiorite/Gabbro
083S002	.6	0	38	0	36	57	1060	0	0	2	Andesite Tuff
083S004	1.2	0	14	0	6	6	169	22	2	6	Rhyolite
083S005	.2	0	30	.2	31	52	725	0	0	15	Andesite Fragmental
083J004	.7	0	14	3.3	9	9	1430	108	19	155	Rhyodacite Tuff
083J001	.6	0	39	.8	44	11	1020	0	0	35	Andesite Fragmental
083S001	.4	0	49	0	40	17	1470	0	0	29	Dacite Lapilli Tuff
083J008	1.1	0	13	0	8	6	752	7	0	34	Rhyolite
083J009	0	0	15	0	26	61	723	0	11	0	Rhyolite + Andesite
083J010	.2	0	37	.8	36	47	1300	0	3	14	Andesite with Calcite

M. Black

NINEN LABS ICP REPORT

PAGE 1 OF 1

FILE NAME: 3-286/SP3
 ACT NAME: GED3

DATE: MAY 27, 1983
 COMPANY: LORNEX
 PROJECT: EMMA

---- CONCENTRATION IN PPM ----

	AG	AS	BI	CD	CO	CU	MN	PB	SB	ZN
16751300	0	0	20	.6	19	32	841	0	0	55
16751250	0	0	14	1.6	11	13	1390	16	5	98
16751200	0	0	12	1.3	14	17	398	1	0	37
17501200	0	0	19	.6	12	24	553	0	0	51
17501250	0	0	14	0	8	7	778	0	0	55
17501300	0	0	18	.2	13	14	3070	0	0	116
17501350	0	0	17	.1	15	15	458	0	0	75
17501400	0	0	13	0	7	7	156	0	0	6
83-S-017	0	0	13	.9	14	13	813	0	0	50
83-S-018	1.5	0	19	1.9	16	16	11900	5	0	366
83-S-019	0	0	21	1.5	20	28	882	0	0	16
15001550	0	0	13	1.8	12	14	1340	9	0	156
15001600	0	0	18	1.2	14	15	1400	0	0	58
15001650	0	0	13	.2	12	13	1630	0	0	72
15001700	0	0	14	.8	9	9	255	0	0	22
15001750	0	0	12	3.8	13	8	308	5	0	4
15001800	0	0	13	1.6	8	7	426	28	5	90
15001850	.1	0	19	.5	17	38	415	0	0	17
15001900	0	0	18	.4	12	12	294	0	0	56
13751350	0	0	20	3.7	18	31	1420	4	0	56
13751400	0	0	13	1.1	11	14	1020	28	2	62
13751450	0	0	14	.5	11	12	773	5	0	91
13751500	0	0	14	0	12	8	654	0	0	52
13751550	0	0	14	.1	12	8	1980	0	0	163
13751600	0	0	20	.2	15	16	923	0	0	84
13751650	0	0	13	0	12	10	1140	0	0	103
13751700	0	0	13	1.0	14	9	2370	9	0	156
13751750	0	0	12	0	10	9	1670	1	0	122
13751800	0	0	13	1.0	13	12	658	0	0	66

FORWARDED BY: [illegible]
 DATE: MAY 27 1983