

83-#781 = 11892

12/84

A Geological Survey on the
Snafu, Carryon, Carryon Two, and
Midnight Nails One and Two claim groups

Vernon Mining Division

NTS 82 L/2

50 10' 118 33'

Owner and Operator : Ted Archibald

Consultant and Author : Robert Simpson

Date Submitted : December 15, 1983

**GEOLOGICAL BRANCH
ASSESSMENT REPORT**

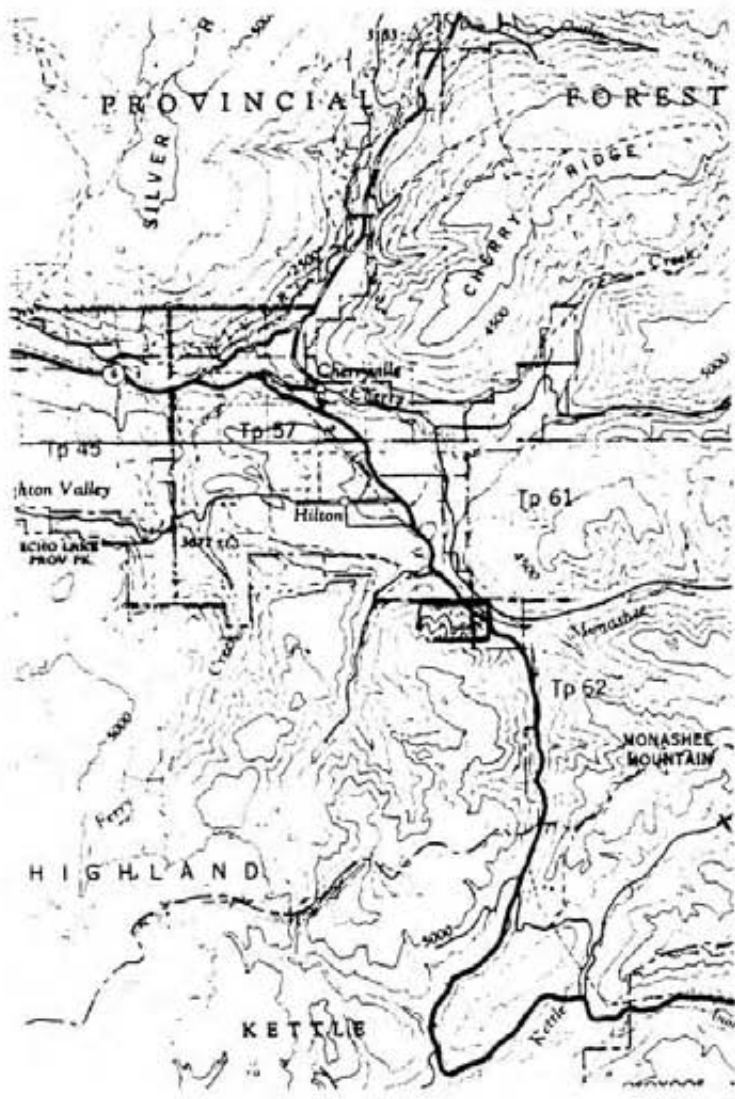
11,892

Table of contents

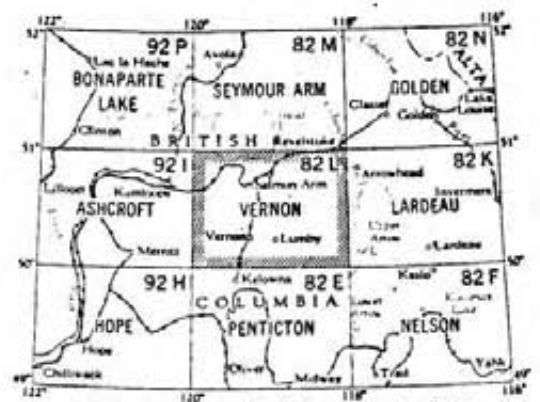
	Page
Location Map	1
Regional geology map	2
Claim map	3
Introduction	4
Geology	4
Detailed geology map	6
Results and recommendations	7
Geochemistry results	8
Program expenses	9
Qualifications	10

Appendix I	Previous assays from the property
II	Diagrammatic Section sketch of bulldozer trench

Location Map

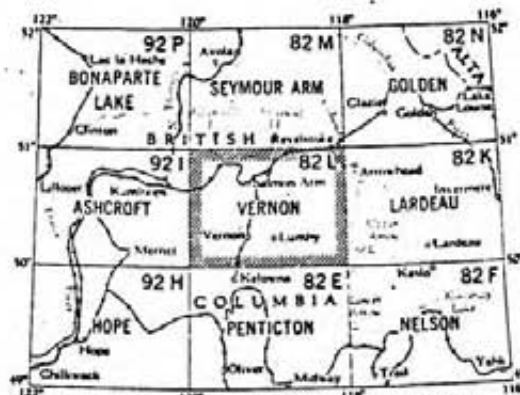
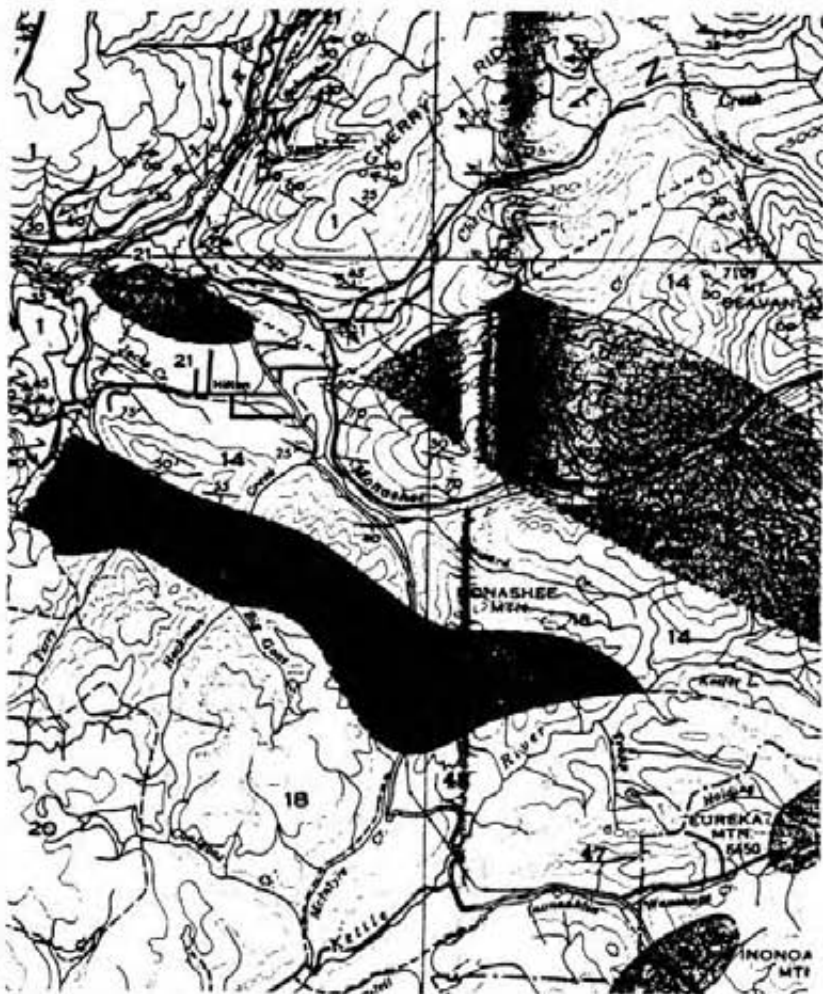


Scale 1:50,000



Index to adjoining maps of the National Topographic System
Tableau d'assemblage du Système National de Référence Cartographique

**VERNON
82 L**



Index to adjoining maps of the National Topographic System
 Tableau d'assemblage du Systeme National de Reference Cartographique

**VERNON
 82 L**

Regional Geology

Scale 1:50,000

**JURASSIC AND/OR CRETACEOUS
 COAST INTRUSIONS**

18 Granite, granodiorite and allied rocks

**CARBONIFEROUS (?) AND PERMIAN
 CACHE CREEK GROUP (13-15)**

PALAEOZOIC

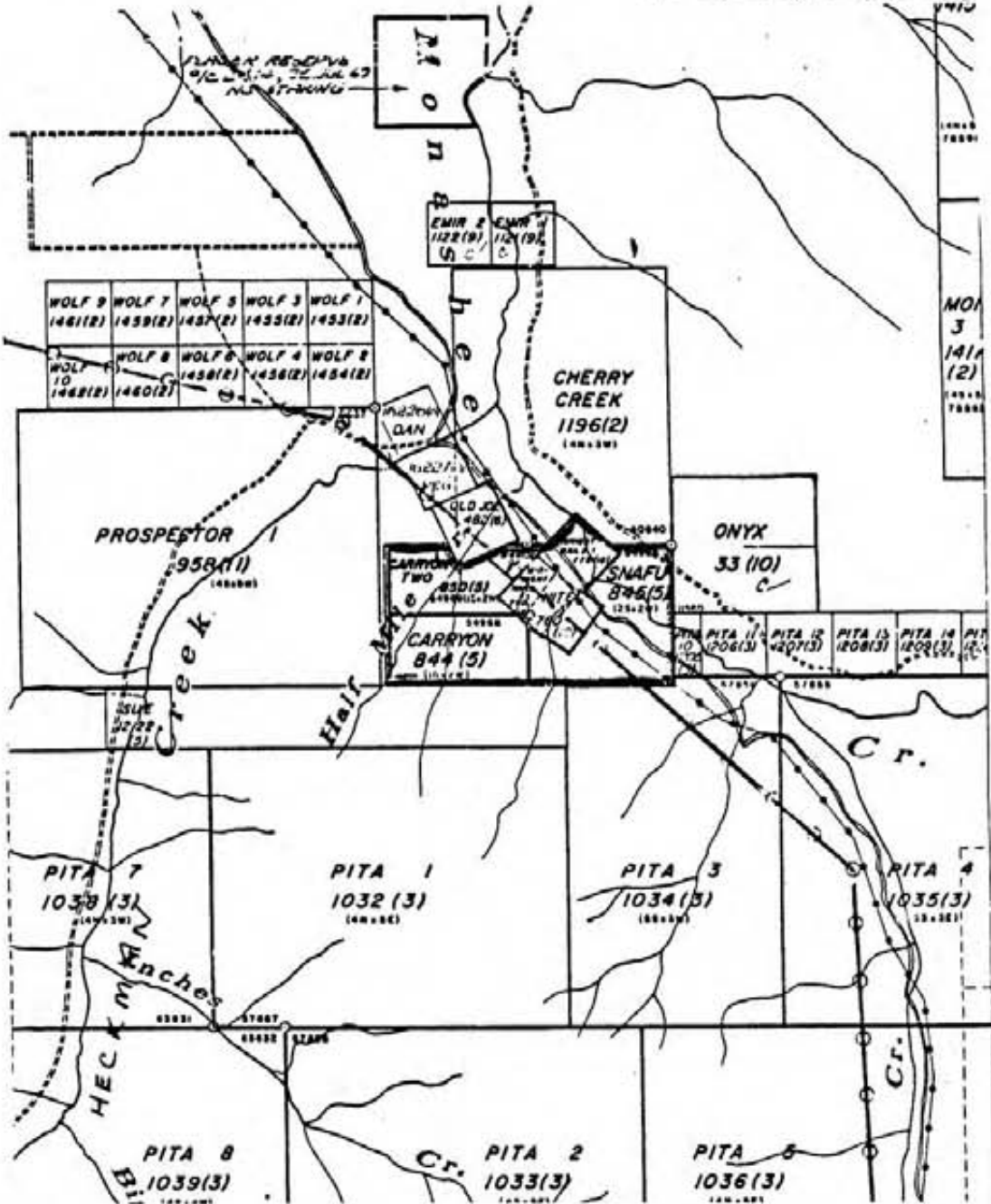
DIVISION C: mainly limestone; minor argillite, quartzite, and andesite lava, breccia, and tuff

14 **DIVISION B:** mainly andesite lava and tuff; minor argillite, quartzite and limestone

DIVISION A: mainly argillite

Claim Map

M82L/2E



Scale
1:50,000

Introduction

The Carryon claim group consists of three claims, the Snafu claim of four units, and the Carryon and Carryon Two claims, of two units each, for a total of eight units. This also encompasses the Midnight Nails One and Two claims, owned by Mr. Archibald. The claims lie on both sides and over Highway 6, approximately 9.5 kilometers east of Cherryville.

A geological survey was done of the property at a scale of 1:10,000 (1 cm. = 100 m.) in an attempt to trace extensions of or a possible source for the mineralization uncovered in the bulldozer trench. Traverses were run over the eight unit claim area by the author and an assistant on November 10 and 11, 1983 (Fig. 1). A diagrammatic section of the mineralized bulldozer trench was completed by I.M. Watson & Associates Ltd. in July, 1983 and is included (Apd. II) with further sampling that was done in the trench.

Geology

The geology of the claim groups consist of Paleozoic Cache Creek andesite lava and tuffs with minor argillite, greywacke, quartzite and limestone interbeds.

The mineralized bulldozer trench cut an argillite-greywacke assemblage which has been intruded by a lamprophyre dyke and sill. Pods or possibly a faulted off quartz vein occur along a shear striking east-west (approx.) with a 40° dip to the south. These pods assay upto 4.60 ounces per tonne gold and 36.5 ounces per tonne silver. The proximaty of the pods to the lamprophyre dyke and sill suggests a possible relationship between the

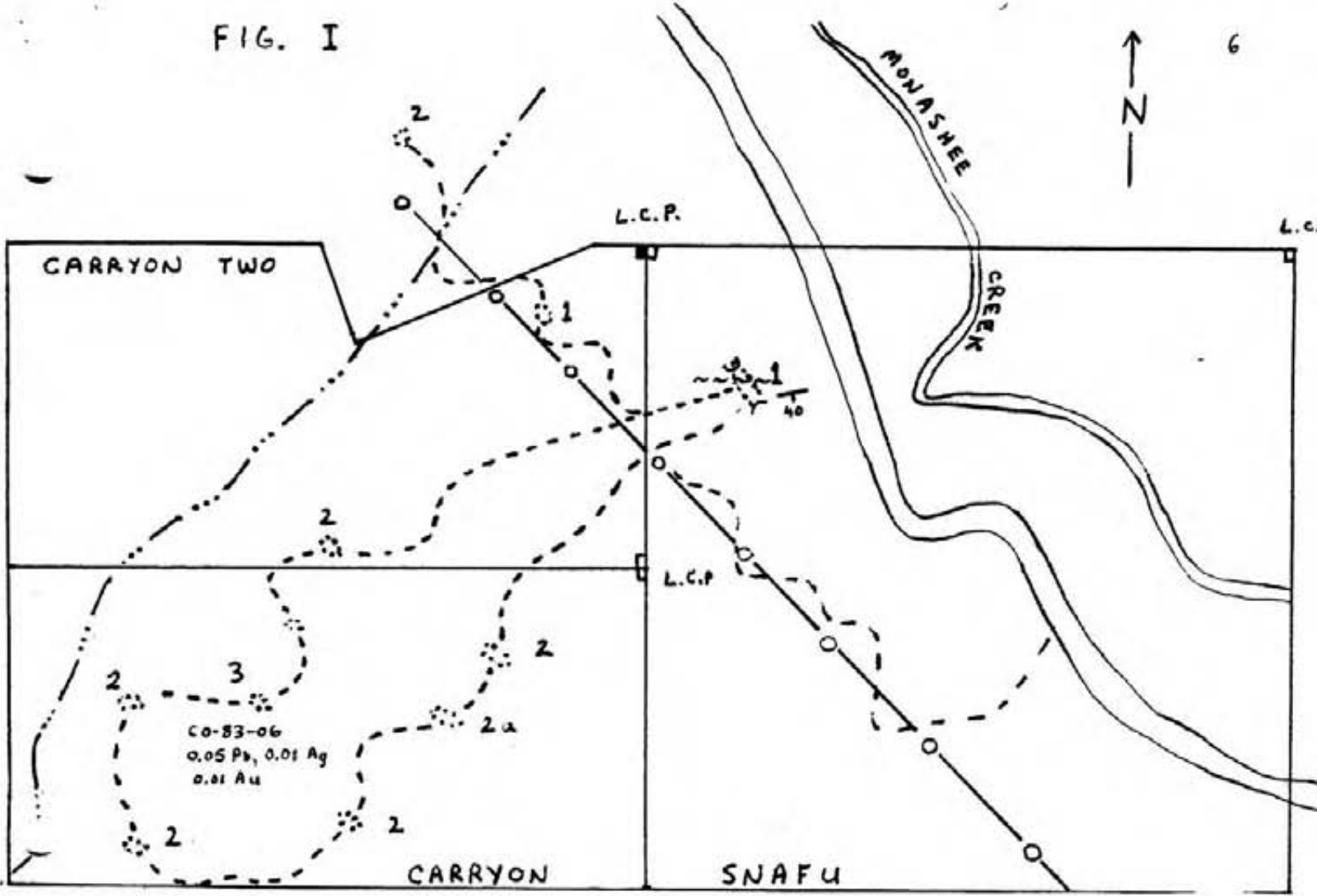
two.

The geology of the Carryon and Carryon Two claims consists of andesite lava flows and tuffs with minor limestone interbeds. Approximately two thirds of the claims are covered with coniferous trees and overburden, making outcrop mapping difficult. Hand trenching was done in several places to expose bedrock.

The sediments exposed in the trench consist of argillite, shale and greywacke with chert bands averaging one centimeter thick. Weathered pyrite is disseminated within the argillite-greywackes adjacent to the shear. The lamprophyre dyke and sill exposed in the bulldozer trench are highly altered, iron rich and contain 2-5 % biotite. There is evidence of deformation in the greywacke-argillites along the contacts suggesting that the lamprophyres intruded along points of weakness.

Traverses to the southwest encountered heavy timber but persistent prospecting and some hand trenching uncovered outcrops in the claim area. A felsite dyke ? or horizon within the volcanics containing 2 - 3 % pyrrhotite and minor to trace pyrite was found. The andesite tuffs and lavas were primarily pale green, containing angular fragments and feldspar porphyry 0.1 - 0.3 centimeters in length. A horizon of andesite lava and limestone interbeds (Unit 2a) occurs in the southwest section of the claims. The limestone interbeds are one to six centimeters thick and pinch out in places - possibly being cut by the tuffs.

FIG. I



LEGEND

- 1 Argillite & greywacke with lamprophyre dyke & sill
- 2 Volcanics - Andesite lava & tuff
- a) - Andesite & limestone interbeds
- 3 Felsite dykes ? (horizon)

- ~ ~ Fault
- Dip & strike of bedding
- Outcrop
- Trench
- Traverse
- Hydro line
- Road
- Creek

Results and recommendations

The results of the geochemical sampling confirm anomalous concentrations of gold, silver and lead in the shear related quartz pods or vein of the bulldozer trench. Anomalous gold values range from 0.340 to 1.424 ounces per tonne, values for silver of 1.93 to 11.66 ounces per tonne and lead values ranging from 1.37 to 5.25 percent.

In order to trace the extension of this mineralized shear zone to the west on the claim group, a geochemical and geophysical survey (VLF-EM) should be completed. A soil geochem grid should delineate the extent of the mineralization and the VLF-EM survey should locate the position of the shear and possibly the depth of the mineralization.

The results of these two surveys should make it relatively easy to establish drill targets for the next phase of exploration..

Geochemistry Carryon Property

	<u>Pb (%)</u>	<u>Ag (oz/tonne)</u>	<u>Au (oz/tonne)</u>	<u>Remarks</u>
CO-83-01	0.01	0.06	0.003	Chip sample of vein
CO-83-02	5.25	11.66	1.424	Chip sample, rusty vein material, traces of galena present
CO-83-03	0.08	0.32	0.028	Chip sample of rusty quartz vein
CO-83-04	1.37	1.93	0.494	Grab sample of vein from scree
CO-83-05	2.17	2.06	0.340	" "
CO-83-06	0.05	0.09	0.010	Pyrrhotite rich, felsite dyke

Program Expenses November 10-13, 1983

Geologist	5 days * \$125.00/ day (2 days transport, 2 days property, 1 day report)	\$625.00
Assistant	4 days * \$100.00/ day	\$400.00
Vehicle	4 days * \$50.00/ day	\$200.00
Gas		\$100.00
Room & Board	4 days * \$45.00/ day * 2	\$360.00
Assay Costs	6 samples	\$115.00
		<hr/>
	Total	\$1800.00

Qualifications

I have a B.Sc. Honors Geology degree from the University of Ottawa and have worked as a professional geologist for four years in Canada, United States and Australia.

Robert Simpson

Appendix I

Previous assays from the property

	Pb %	Zn %	Au(oz/t)	Ag(oz/t)	Cr %
3524 c	4.20	1.86	1.23	6.20	---
3525 c	0.03	0.02	Tr	Tr	0.01
3526 c	0.02	0.01	"	"	---
3527 c	---	---	"	"	---
3521 c	0.015	---	"	"	---
3522 c	---	0.03	"	"	---
3523 c	---	---	"	"	---

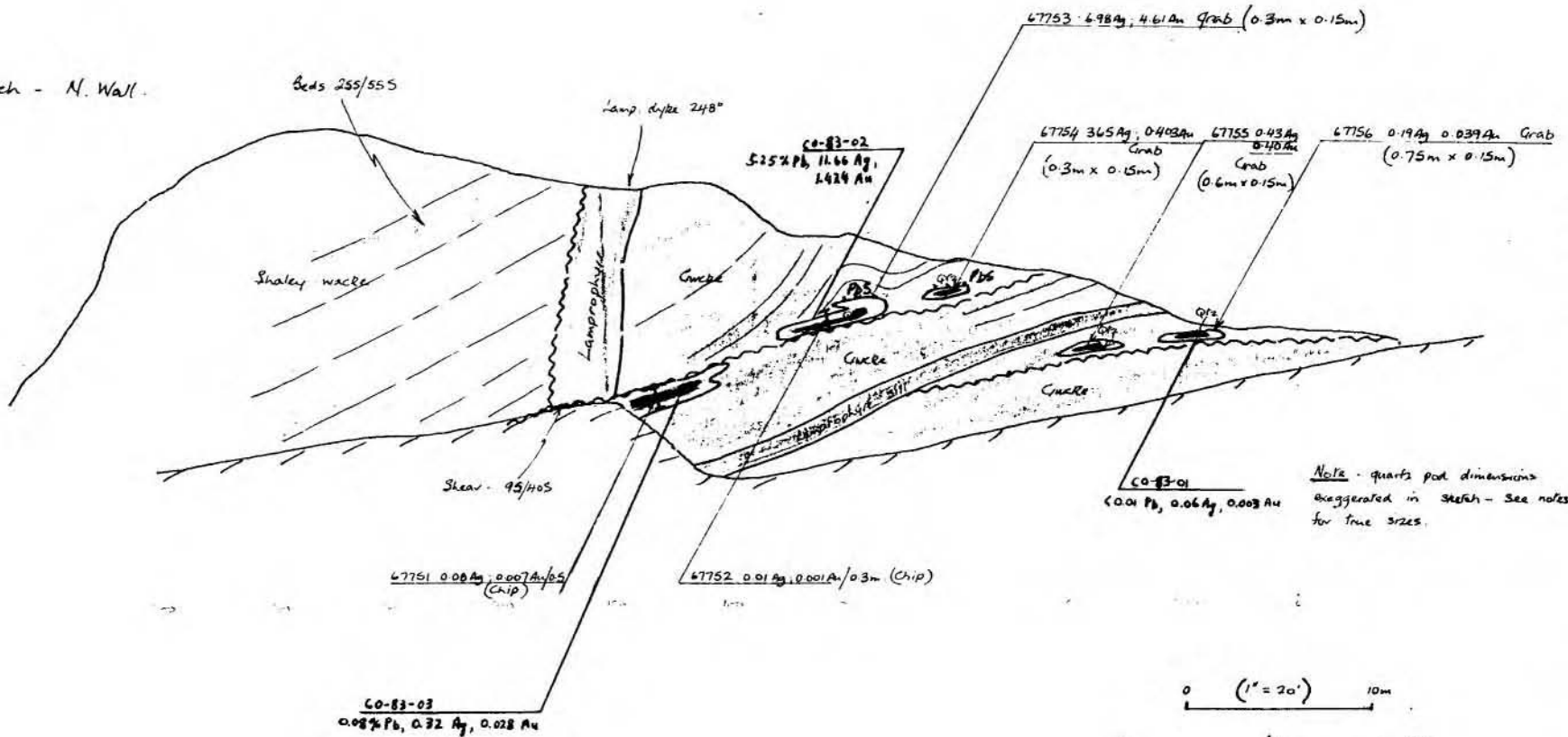
67751*			0.007	0.08	
67752			0.001	0.01	
67753			4.610	6.98	
67754			0.403	36.50	
67755			0.040	0.43	
67756			0.039	0.19	

* I.M. Watson & Associates assays

S

N

Bulldozer Trench - N. Wall.



Note - quartz pebbles dimensions exaggerated in sketch - see notes for true sizes.

ARCHIBALD 'CARRY ON' PROPERTY
 CHERRYVILLE AREA
 KAMLOOPS M.D. B.C.
 NTS 82L/2
 DIAGRAMMATIC SECTION - SKETCH
 (VIEW - WEST)
 I. M. WATSON & ASSOCIATES LTD. July '03.

APPENDIX I