

83-#196 - 11907

3/85

1983 Drilling Assessment Report

TITLE	Tootsee River Property
AUTHOR	A. C. Hitchins
DATE	13 March 1984
COMMODITY	W
LOCATION	29 kilometres southeast of Rancheria, Y.T.
-Area	Liard
-Mining Division	Latitude 59°59'N
-Co-ordinates	Longitude 130°06'W
-NTS	104 0/16E
-Claims	Heap 1
OWNER	Canamax Resources Inc.
OPERATOR	Canamax Resources Inc.

CANAMAX VANCOUVER OFFICE

**GEOLOGICAL BRANCH
ASSESSMENT REPORT**

11,907

TABLE OF CONTENTS

INTRODUCTION

General Statement-----	1 /
Location and Access-----	1 /
Previous Work-----	1 /

RESULTS-----	2 /
--------------	-----

APPENDICES

Appendix I - Drill Logs	
Appendix II - Statement of Qualifications	
Appendix III - Statement of Costs	

FIGURES

Figure 1 - Location Map-----	After Page 1 /
Figure 2 - Claim Map (1:50,000)-----	After Page 1 /
Figure 3 - Drill Hole Location Map (1:5,000)-----	In Pocket /
Figure 4 - Drill Section-----	After Page 2 /

INTRODUCTION

General Statement

The report summarizes the results of a single 211 m NQ diamond drill hole designed to test an iron-stained breccia zone. The hole was collared at an elevation of 1480 m near the centre of the Heap 1 claim and was drilled at -70° on a bearing of N 30° W.

The drilling contractor was Arctic Diamond Drilling of Whitehorse with helicopter support provided mainly by a Hughes 500D owned by Canwest Helicopters of Okotoks, Alberta. During drill moves a T.N.T.A. Bell 204B (Whitehorse) and a Frontier Bell 205 (Watson Lake) were utilized.

Tony Hitchins, Geoff Booth and Tom Robinson of Canamax logged and split the drill core.

The core is presently stored at Twilight Services in Watson Lake, Y.T.

Location and Access

The Heap 1 and 2 claims of the Tootsee River property are located adjacent to the B.C. - Yukon border 29 km southeast of the village of Rancheria on the Alaska Highway.

Access is by helicopter from Watson Lake 75 km to the east or from Rancheria during the field season.

Previous Work

The claims were staked in 1979 to cover the apparent source of a tungsten silt anomaly. Work in 1979 and 1980 concentrated on geological mapping and prospecting. In 1983 a topofil and compass grid provided control for soil geochemical and magnetic surveys in the central portion of the Heap 1 claims.

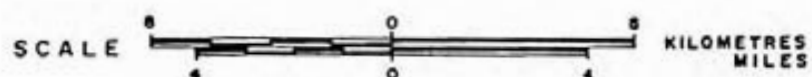


CANAMAX RESOURCES INC.

TOOTSEE RIVER PROPERTY

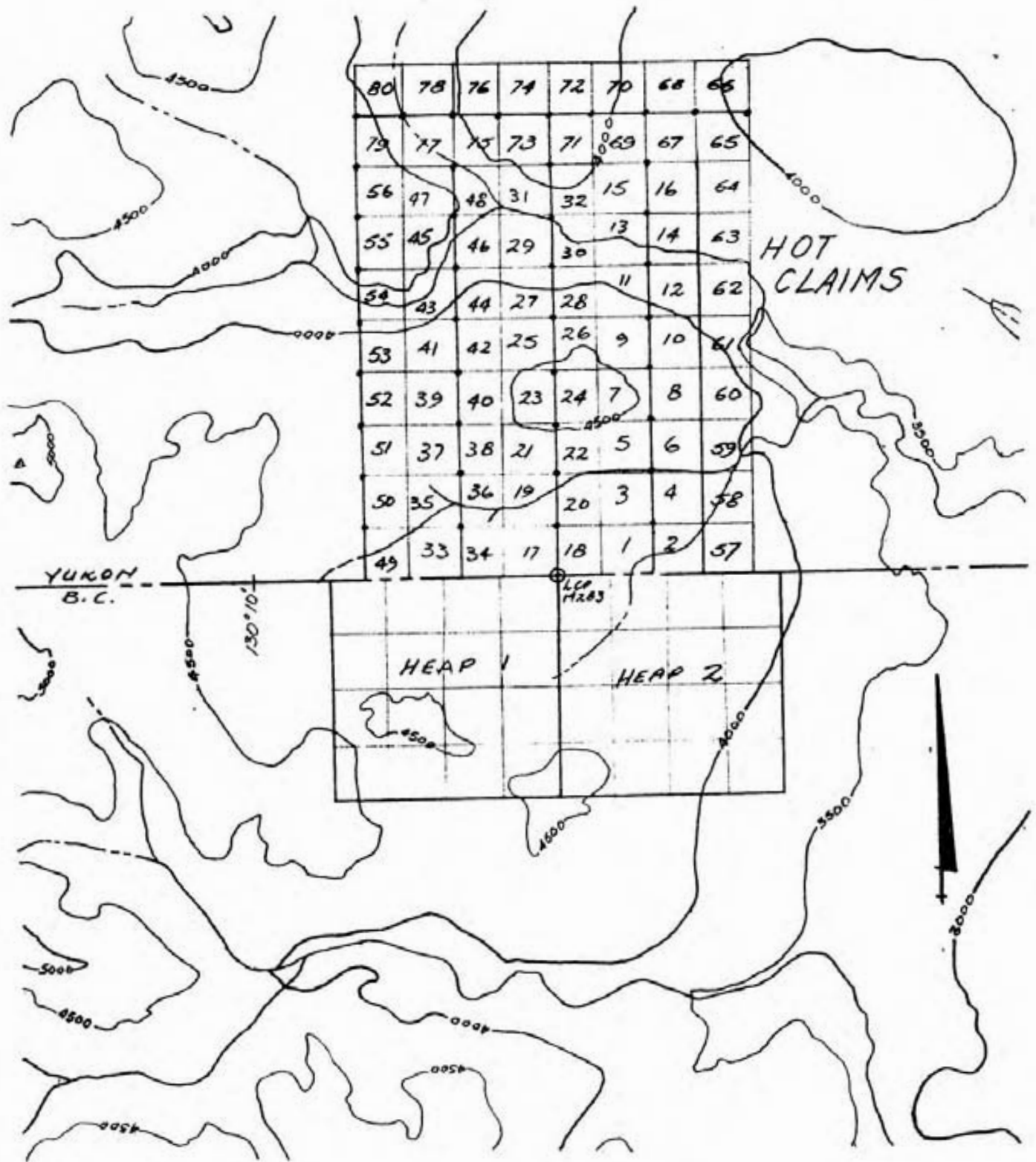
WATSON LAKE M.D. — YUKON
 ATLIN M.D. — B.C.

LOCATION MAP



1:250,000

N.T.S. Ref. 104016, 105 B /
 Fig. 1



CANAMAX RESOURCES INC.
 TOOTSEE RIVER PROPERTY
 WATSON LAKE M.D. - YUKON
 ATLIN M.D. - B.C.
 CLAIM MAP

1:50,000

FIG 2
 NTS Ref. 104 014, 105 B1

TOOTSEK RIVER ASSAY SAMPLES

DDH 83-1

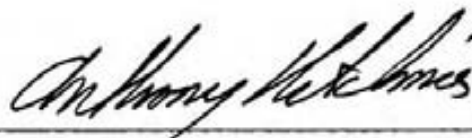
Depth (m)			Sample #	Analytical Results in ppm											(ppb)	
From	To	Interval		Mo	Cu	Ni	Co	Mn	Fe	Ag	Zn	Pb	W	Au		
9.53	10.91	1.38	83EXT1	1	10	22	4	640	0.8	1.0	82	208	2	10		
14.7	16.15	1.45	T2	7	6	28	2	600	0.8	0.2	68	32	1	10		
20.65	22.00	1.35	T3	1	6	60	2	700	0.8	0.4	52	12	2	10		
26.25	27.50	1.25	T4	1	4	16	2	480	0.6	0.4	56	12	1	10		
31.76	33.17	1.41	T5	1	6	12	2	600	0.6	0.2	154	42	1	10		
37.38	38.41	1.03	T6	2	4	8	4	600	0.6	0.2	88	28	1	10		
42.44	43.8	1.36	T7	15	2	16	4	700	0.8	0.4	72	32	1	10		
47.55	48.95	1.40	T8	18	12	58	6	180	1.0	0.4	500	22	5	10		
52.95	54.24	1.29	T9	17	18	82	6	180	1.0	0.4	500	30	2	10		
58.04	59.54	1.50	T10	20	18	44	6	160	0.7	0.4	270	22	1	10		
64.36	65.78	1.42	T11	4	12	94	4	480	0.5	0.2	80	8	1	10		
69.73	71.24	1.51	T12	2	6	10	2	380	0.3	0.2	50	8	1	10		
75.32	76.84	1.52	T13	2	8	18	4	300	0.8	0.2	42	20	5	10		
81.40	82.85	1.45	T14	2	6	8	4	300	0.5	0.2	24	8	1	10		
87.39	88.50	1.11	T15	2	4	4	4	2400	0.6	0.4	126	16	2	10		
92.95	94.44	1.49	T16	2	16	20	4	480	1.0	0.2	62	26	1	10		
98.50	99.93	1.43	T17	11	14	44	2	840	0.7	0.2	56	20	5	10		
102.05	102.65	0.60	A18							0.74 oz/T	2.26 %	0.44 %	10			
103.85	105.38	1.53	T19	20	22	68	6	1220	0.8	0.2	224	48	1	10		
108.88	110.30	1.42	A20							0.04 oz/T	0.06 %	0.04 %	1			
114.8	116.16	1.36	T21	30	40	120	16	160	2.0	0.2	136	12	2	10		
117.18	118.40	1.22	A22							0.02 oz/T	0.02 %	0.02 %	2			
119.92	120.43	0.51	83EXT23	10	18	62	6	220	1.0	0.2	204	10	2	20		
120.43	121.43	1.00	T24	12	30	66	6	360	1.0	0.2	52	6	1	10		
125.70	127.18	1.48	T25	22	32	66	6	300	1.0	0.2	62	6	2	10		
132.62	133.09	0.47	T26	3	2	10	2	540	0.6	0.2	40	8	2	10		
135.82	137.33	1.51	T27	10	4	12	2	420	0.6	0.2	58	16	2	10		
143.10	144.60	1.50	T28	10	4	18	2	580	0.6	0.2	94	76	1	10		
147.48	148.91	1.43	T29	10	4	18	2	620	0.8	0.2	60	18	1	10		
153.27	154.69	1.42	T30	22	14	60	6	340	0.9	0.2	70	6	1	10		
156.57	158.00	1.43	A31							0.02 oz/T	0.02 %	0.02 %	1			
160.35	161.82	1.47	T32	7	16	38	4	180	0.4	0.2	34	34	2	10		
163.95	166.12	2.17	A38							0.02 oz/T	0.02 %	0.02 %	5			
166.12	167.50	1.38	T39	16	32	56	4	80	1.0	0.2	22	12	1	10		
171.51	172.92	1.41	T40	23	36	78	6	480	1.4	0.2	72	14	1	10		
177.32	178.69	1.37	T41	2	26	32	10	160	1.6	0.2	32	8	1	10		
180.00	181.50	1.5	A42							0.02 oz/T	0.02 %	0.02 %	1			
181.80	182.3	0.5	A43							1.18 oz/T	1.76 %	0.5 %	1			
182.65	183.96	1.31	T44	3	26	38	16	760	2.0	0.6	238	60	1	10		
187.73	189.24	1.51	T45	2	26	42	16	260	2.2	0.4	104	20	1	10		
192.90	194.40	1.5	T46	2	30	34	12	140	1.8	0.2	46	8	1	10		
198.17	199.55	1.38	T47	2	34	24	10	120	1.4	0.2	40	10	1	10		
201.68	202.94	1.26	A48							0.02 oz/T	0.02 %	0.04 %	10			
203.92	205.30	1.38	T49	1	18	14	4	280	1.3	1.0	68	20	1	10		
210.0	210.54	0.54	A50							0.04 oz/T	0.02 %	0.04 %	1			

RESULTS

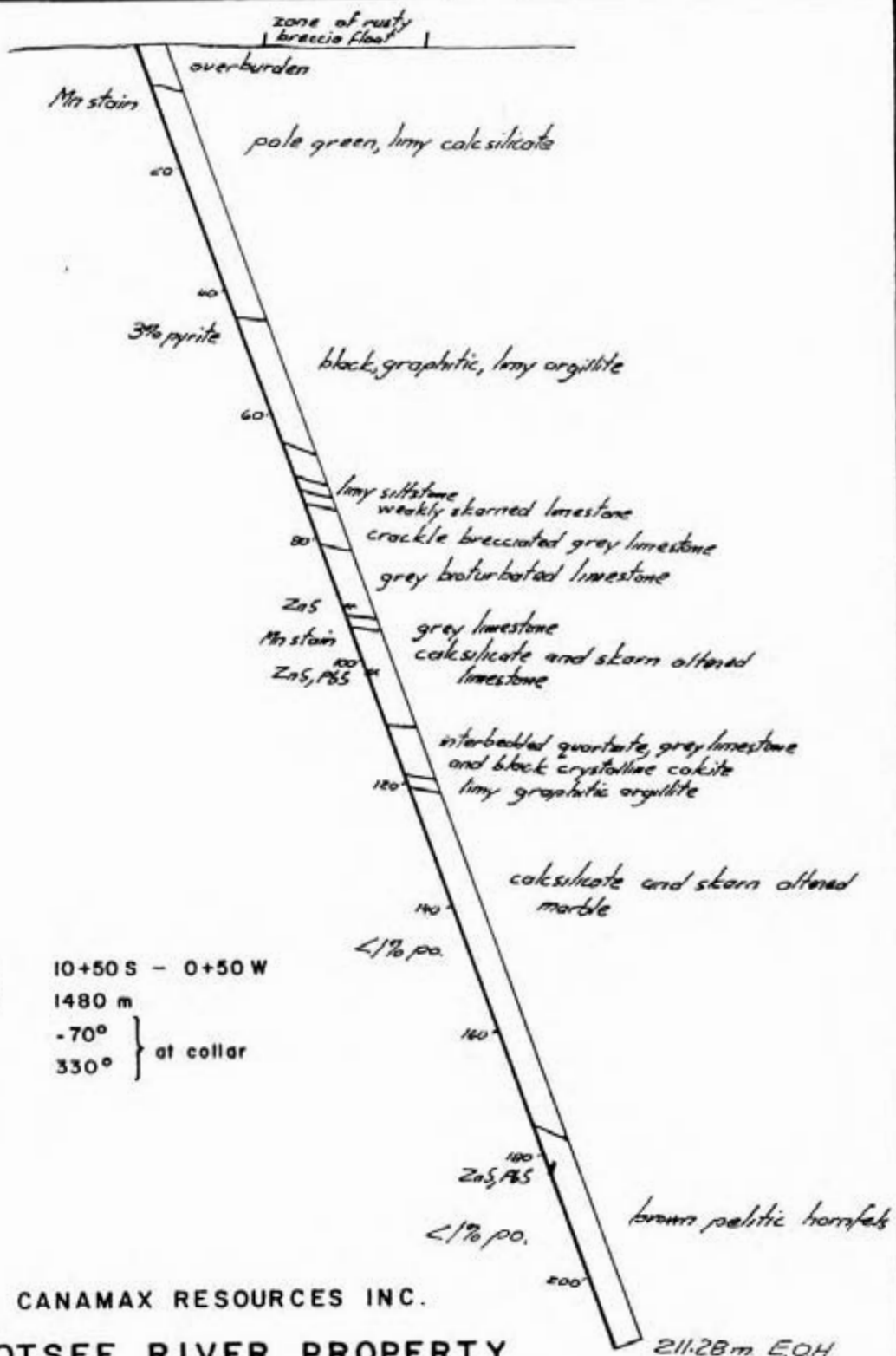
The hole intersected 175 m of weakly calcsilicate and skarn altered calcareous flat lying strata before entering brown and green slightly fractured pelitic hornfels. Silicified brecciated limestone and crackle brecciated limestone between depths of 74 and 81 m may be the downward extension of the strongly iron stained breccia float exposed immediately north of the drill collar.

Minor clusters of reddish sphalerite and galena were noted in altered carbonate rocks at 102 m and in narrow veins in pelitic hornfels at 182 m.

Geochemical and assay values for all core samples are summarized in Table 1.



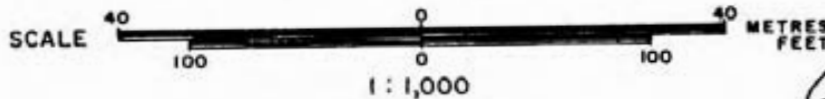
A. C. Hitchens



Location 10+50 S - 0+50 W
 Elevation 1480 m
 Dip -70°
 Azimuth 330° } at collar

CANAMAX RESOURCES INC.
 TOOTSEE RIVER PROPERTY
 HEAP CLAIMS
 ATLIN MINING DIVISION — BRITISH COLUMBIA

SECTION ALONG D. D. H. TR-83-1
 LOOKING SOUTHWEST



John Henry Ketchum

Vancouver —

APPENDIX I

DRILL LOGS

DIAMOND DRILL RECORD

Property Tootsee River

Project No. 57043

Hole Number 83.1

Coordinates _____

Collar Elevation 1480 m

Bearing at Collar 330

Dip at Collar -70

Core Size/Method NQ wireline

Drilling Contractor Arctic Diamond Drilling, Whitehorse

Commenced Drilling Sept. 17, 1983

Completed Drilling Sept. 22, 1983

Total Depth 211.28 m

Logged By Tony Hitchins

<u>Survey Summary</u>				<u>Pertinent Assay Data</u>		<u>Pertinent Geology</u>	
Depth	Dip	Bearing	Method	Interval	%	Interval	Rock Type

DEPTH METRES	GRAPHIC LOG				% REC.	ASSAY INTERCEPTS	ASSAY DATA					SIZE WO ₃		NOTES
	LITH.	BEDDING	FAULTS	NUMBER OF PIECES			SAMPLE NO. AND INTERVAL	% WO ₃	% MoS ₂	VIS. EST. WO ₃				
0 to 6.76														Overburden
6.76 to 28.65		50°												Light green to greyish well foliated calcsilicate and light coloured skarn with scattered talc and Mn stained patches and fractures, core is softer than most calcsilicate (probably surface weathering)
														6.76-7.93 leached, friable
														19.7 - 21.0 weakly brecciated, fractures open
														27.7-28.65 talc filled fractures at 10°-50° to C.A.
28.65 to 28.85		60°												Medium grey limestone with small greyish needles (amphibole?) cut by 5 mm calcite veins at 45° to C.A.
28.85 to 44.15		70°												As for 6.76-28.65 scattered talc and Mn stained fractures parallel to C.A., rapid transition into underlying unit
														35.87-36.8 Limy grey calcsilicate with calcite-muscovite veins up to 1 cm wide 45° to C.A.
44.15 to 64.5		70° 50°												Black graphitic, limy argillite; well banded with 3% disseminated pyrite; carbonate-quartz-pyrite ± talc veins up to 1 cm sometimes with brecciated margins, 34 veins in 4.2 m
														45.31 drusy calcite in narrow slip zone
														50.2-54.8 20 pyrite-calcite threads to narrow veins
														Section is quite competent with core up to 30 cm long rarely <1 cm, calcite-pyrite concretions to 20 cm length
														55.5-56.23 broken core, 1 cm wide brecciated veins with quartz-calcite (minor pyrite) matrix, graphitic slips
														57.7 1.5 cm pyrite band parallel to foliation (50°)

DEPTH METRES	GRAPHIC LOG				% REC.	ASSAY INTERCEPTS	ASSAY DATA					SIZE WO ₃ I Fine 5 Coarse			NOTES
	LITH.	BEDDING	FAULTS	NUMBER OF PIECES			SAMPLE NO AND INTERVAL	% WO ₃	% MO S ₂	VIS. EST. WO ₃					
64.5 to 69.3															62.5 harder more siliceous towards base, increase in qtz-cbt veins to 5% of core
															Medium grey very weakly skarned limestone, locally well foliated
															64.63 10 cm of broken core with Mn stain
															69.1 20 cm of slips and gouge at 30°-60° to C.A. Talc and a rusty weathering pale green fibrous mineral on slips
69.3 to 71.86		60°													Dark well banded slightly limy siltstone, locally graphitic, gradational lower contact, irregular qtz-cbt veins to 1 cm
71.86 to 74.7															Medium grey weakly skarned limestone 71.8 leached rusty bands parallel to foliation
															73.5-74 rusty, soft broken zone, drab green 3 mm qtz-cbt vein extends along core axis from a slip in this zone
															73.9-74.4 breccia, lower contact is sharp - about 30° to C.A. Upper contact is diffuse or fragments become larger, fragments are angular and silicified in a light grey siliceous matrix, second stage brecciation has incorporated earlier silicified fragments in a yellowish grey matrix. Breccia ends in a 4 cm fine grained light grey silica vein or bed ? with a lower irregular contact at 90° to C.A.
74.7 to 81.4															Dark grey weakly crackle brecciated massive to bedded limestone becoming dolomitic towards base. Trace skarn and disseminated pyrite, irregular fractures partially filled with drusy calcite, narrow bleached zones along some hairline fractures

DEPTH METRES	GRAPHIC LOG				% REC.	ASSAY INTERCEPTS	ASSAY DATA					SIZE WO ₃		NOTES
	LITH.	BEDDING	FAULTS	NUMBER OF PIECES			SAMPLE NO. AND INTERVAL	% WO ₃	% MoS ₂	VIS. EST. WO ₃				
														107.5-110.7 rusty broken core, pyrite on most fracture surfaces, purple fluorite with pyrite in some 2-3 mm veins
10.7 to 18.54														Mixture of medium to dark grey quartzite (50%), dark grey foliated limestone and black coarsely crystalline calcite; pyrite filled fractures in quartzite and dark grey limestone
														112-113.11 broken core, poor recovery
														117.2-117.3 brecciated grey quartzite with pyrite and chlorite on fractures
														118.15-118.54 as above
18.54 to 20.5		60°												Dark grey, well banded, very limy graphitic argillite; scattered white calcite veins to 1 cm, minor pyrite on fractures; sharp lower contact.
20.5 to 74.7														Light grey, well banded calcsilicate and locally skarn altered marble, generally soft, irregular calcite veins about 10/1 m.
														128 first appearance of pyrrhotite
														129-139.5 veins rare, no sulphides
														146.8-150 felted hornblende (?) needles gives an almost diabasic texture to core
														156.55-158 coarsely crystalline veins and squiggles of pale green tremolite and calcite; slips coated with dull emerald green fuchsite. <1% pyrrhotite
														163.9-166.15 badly broken core, abundant calcite veins <1% pyrite in quartz-carbonate veins, numerous greasy slips, possible fault zone

DEPTH METRES	GRAPHIC LOG				% REC.	ASSAY INTERCEPTS	ASSAY DATA					SIZE WO ₃ 5 Courses	NOTES
	LITH.	BEDDING	FAULTS	NUMBER OF PIECES			SAMPLE NO. AND INTERVAL	% WO ₃	% MoS ₂	VIS. EST. WO ₃			
174.7 to 211.28		45°											168.5-172.8 abundant calcite-quartz veins 170.5-171.5 } light grey quartz with clusters of pale green 171.5-172.8 } tremolite
													Greenish brown, fine grained, well banded pelitic hornfels; fracturing, bleaching along fractures and pyroxene development along fractures increases with depth; light pink to lilac coloured alteration of brownish hornfels increases towards bottom of hole, <1% pyrrhotite in this section but po >> py
													180.2-181.3 broken core, abundant narrow quartz-carbonate veins, bleaching
													182.0-182.3 greenish hornfels after brown hornfels cut by 1-2 cm quartz-carbonate-sphalerite-pyrite-galena vein 5°-10° to C.A., vein has brecciated margins, sphalerite extends along foliation planes away from veins
													184.0-189.3 dark grey to black hornfels cut by scattered, bleached and pyroxene coated fractures, approx. 14 fractures/1 m., only trace pyrrhotite and pyrite on fractures
													189.3-195.8 interbanded brown, light grey, green and pinkish hornfels, hornfelsing appears to be bedding controlled.
													1 cm bands of calcisilicate with 5-10% pyrrhotite occur about every 40 cm
													192.0-192.7 broken core, quartz-calcite veins at 0°-40° to C.A., no sulphides
													195.8-200.3 fracture control to bleaching and development of pinkish hornfels is more prominent

APPENDIX II

STATEMENT OF QUALIFICATIONS

STATEMENT OF QUALIFICATIONS

NAME: A.C. Hitchins

ADDRESS: 601-535 Thurlow Street,
Vancouver, B.C. V6E 3L6

EDUCATION: University of Toronto - B.A. Sc. 1970

University of Toronto - M.Sc. 1973

EXPERIENCE: AMAX of Canada Limited - Staff Geologist - 1974 to present

G.W. Booth

#509 - 30 Charles Street West, Toronto, Ontario M4Y 1R5

Education - Secondary - University of Toronto Schools 1969-1973
Tertiary - Western Australian Institute of Technology,
1973-1974 University of Toronto, 1974-1980;
B.Sc. Geology 1978, M.Sc. Geology 1981.
Scholarships - Rotary International Student Exchange
Scholarship to Perth, Western Australia,
to attend the Western Institute of Technology
M.Sc. Thesis Topic - The Pamitug Lake Batholith; a large
(700 sq.km.) hypabyssal porphyritic acidic
intrusion of Paleohelikan age located in the
Baker Lake Basin of the N.W.T. A petrological,
geochemical and geophysical evaluation of the
body has been undertaken as part of a 1:250,000
scale regional mapping project of the Basin
itself, initiated by the Geological survey
of Canada in 1976.

Experience -1973 - Underground and surface labourer, Agnico Eagle
Gold Mines Ltd.
1975 - Junior Geologist, Camflo Gold Mines Ltd.
1976 - Junior Geologist, Hollinger Mines Ltd. Labrador
Mining Ltd.
1977 - Junior Geologist, United Siscoe Mines Ltd.
1978 - Senior Geologist, Geological Survey of Canada,
Precambrian Division
1979 - Senior Geologist, Geological Survey of Canada,
Precambrian Division
1980 - Senior Geologist - AMAX of Canada Limited - 1980
Field Season
1983 - Senior Geologist - Canamax Resources Inc.

B.E. Booth

#509 - 30 Charles Street West, Toronto, Ontario M4Y 1R5

Education - University of Toronto B.Sc. 1981 or 1982
Gemological Institute of America G.G. 1981
W.A. Porter Collegiate Grade 13 1974

Experience- AMAX of Canada Limited - 1980 field season -
junior assistant

STATEMENT OF QUALIFICATIONS

NAME E.T. Robinson

ADDRESS Old Ferry Road,
General Delivery,
Monte Creek, B.C.
VOE 2M0

EDUCATION 1980-1982 - Cariboo College
Geology
Correspondence Mineralogy Course
- from Ministry of Education Victoria, B.C.

EXPERIENCE Summer 1981 - Sulpetro Minerals Ltd.
Junior Field Assistant
Sept. 1981- - Cariboo College
Dec. 1981 Geology Lab. Assistant
Summer 1982 - AMAX Minerals Exploration
Geological Assistant
Summer 1983 - Canamax Resources Inc.
Geological Assistant

APPENDIX III

STATEMENT OF COSTS

APPENDIX III
STATEMENT OF COSTS

Period of Work - September 11 - 24, 1983

Salaries

Tony Hitchins - 2476 W. 13th Ave. Vancouver, B.C. Staff Geologist, Sept. 11 - 24 14 days @ \$177.60/day	2,486.40
Geoff Booth - 107-50 Walmer Rd. Toronto, Ontario Temporary Geologist, Sept. 11 - 18 8 days @ \$102.08/day	816.64
Tom Robinson - Old Ferry Rd. Monte Creek, B.C. Core Splitter, Sept. 20 - 24 5 days @ \$63.25/day	316.25

Accommodation - Rancheria, Y.T.
Sept. 11 - 14, 1983

Rooms and Meals - 4 men for 4 days 2 men for 2 days	1,028.00
--	----------

Drill Camp - 42 man days @ \$30/man day (includes pilot and engineer)	1,260.00
--	----------

<u>Helicopter</u> - TNTA 204B 3.7 hrs @ \$800/hr + fuel	3,349.55
Canwest 500D Flight Reports 13140, 14153-14157	13,546.64
Frontier 205 $\frac{1}{2}$ (1.6 hr. @ \$1,175/hr + \$380.48 fuel)	1,130.24

Drilling - Arctic Diamond Drilling
184 Industrial Rd.
Whitehorse, Y.T.

Invoice # 2290, 2293	
Mobilization $\frac{1}{2}$ (\$2,800)	950.00
Setup	2,784.00
Hourly charges	1,276.00
Casing	400.00
Coring	14,553.00
Water supply	696.00
Move off hole $\frac{1}{2}$ (\$2,304)	1,152.00
Core boxes 50 @ \$9.50 each	475.00
Propane 6-10016 tanks @ \$40.00 each	240.00

<u>Drill Site Preparation</u> - 1 day, 2 men from McCrory Holdings	550.00
---	--------

Appendix III
Statement of Costs
Page Two

<u>Truck Rental</u> - 1/3 of Norcan invoice for \$3,059.60	1,020.00
gas, Rancheria Hotel \$68.00 + \$236.00 + \$116.00	420.00

Assay Charges

36 samples for 9 elements @ \$5.70	205.00
45 samples for W @ \$3.00	135.00
36 samples for Au @ \$3.50	126.00
9 assays for Ag, Pb, Zn @ \$19.00	171.00
45 rock prep. @ \$2.00	<u>90.00</u>

\$49,176.72

We are applying 7 years' assessment work to both the Heap 1 and Heap 2 claims.

Rancheria Hotel Ltd.
 Mile Post 70, Alaska Highway,
 Yukon Territory
 Y0A 1A0 Telephone: 851-6456

CANAMAX RESOURCES:
 601-535 TITURLOWE ST
 VANCOUVER, B.C. V6E-3L6

Date... SEPT 17 1983

AS PER ATTACHED			
CAFE	INVOICES	157.40	602.30
(BY BOOTHMAN HITTING) RICHARD ROY DAN MACKLE BUZ BOSE - Y. GORDON (MARK) GARAGE 49.00 ✓			
	19.00 ✓	68.00 ✓	
ROOMS	SEPT 9 - 14	160.540	940.00
			1610.30
			16
CANAMAX			
SEP 26 1983 VANCOUVER OFFICE			
OK for	11/24/83		
John	11/24/83		
to call	11/24/83		
	3105/3 8151		1561.30
	3105/3 8226		49.00
CK 25491 U/L	3105/3		1610.30

*1028.00 is applicable to DDH 83.1



CANWEST AVIATION LTD.
 675 AVIATION BOULEVARD N.E.
 CALGARY INTERNATIONAL AIRPORT
 CALGARY, ALBERTA, CANADA T2E 7G1
 TELEPHONE: (403) 275-5850 TELEX: 03-821913

INVOICE # 3781
 Oct 15, 1983

316 CANAMAX RESOURCES INC.
 #601 - 535 THURLOW ST
 VANCOUVER, BC

V6E 3L6

REGISTRATION : C-GOPC

DATE	FLIGHT REPORT	HOURS FLOWN	RATE	EXTENSION
83/09/01	13129	1.3✓	\$375.00	\$487.50
83/09/02	13130	1.3✓	\$375.00	\$487.50
83/09/03	13132	1.3✓	\$375.00	\$487.50
83/09/04	13133	3.6✓	\$375.00	\$1,350.00
83/09/05	13134	0.2✓	\$375.00	\$75.00
83/09/06	13135	2.4✓	\$375.00	\$900.00
83/09/07	13136	0.0✓	\$375.00	\$0.00
83/09/08	13137	0.0✓	\$375.00	\$0.00
83/09/09	13138	0.5✓	\$375.00	\$187.50
83/09/10	13140	0.7✓	\$375.00	\$262.50
83/09/11	13141	5.2✓	\$375.00	\$1,950.00
83/09/12	13142	1.0✓	\$375.00	\$375.00
83/09/13	13143	1.1✓	\$375.00	\$412.50
83/09/14	13144	5.9✓	\$375.00	\$2,212.50
83/09/15	13145	5.6✓	\$375.00	\$2,100.00
83/09/16	13146	2.9✓	\$375.00	\$1,087.50
83/09/17	13148	3.7✓	\$375.00	\$1,387.50
83/09/18	13150	0.8✓	\$375.00	\$300.00
83/09/19	14153	1.7✓	\$375.00	\$637.50
83/09/20	14154	1.6✓	\$375.00	\$600.00
83/09/21	14156	2.0✓	\$375.00	\$750.00
83/09/22	14157	5.4✓	\$375.00	\$2,025.00
83/09/23	14158	4.0✓	\$375.00	\$1,500.00
83/09/24	14159	2.4✓	\$375.00	\$900.00
83/09/25	14160	2.1✓	\$375.00	\$787.50
83/09/26	14161	2.3✓	\$375.00	\$862.50
83/09/27	14162	2.4✓	\$375.00	\$900.00

10.1

57028

57043

- 0642 - 0507

57043 - 12150

CK 1104 OCT 27 1983

CONTINUED...



CANWEST AVIATION LTD.
 699 AVIATION BOULEVARD N.E.
 CALGARY INTERNATIONAL AIRPORT
 CALGARY, ALBERTA, CANADA T2E 7G1
 TEL: 938-5111

CANWEST AVIATION LTD.
 BOX 670 CALGARY AIR PARK
 OKOTOKS, ALBERTA T0L 1T0
 TEL: 933-5111

RECEIVED
 OCT 18 1983

INVOICE # 3782
 Oct 15, 1983

316 VANCOUVER OFFICE INC.
 #601 - 535 THURLOW ST
 VANCOUVER, BC

V6E 3L6

REGISTRATION : C-GGPC
 RE INVOICE : RE INVOICE 3781

DATE	FLIGHT REPORT	HOURS FLOWN	RATE	FLY	EXTENSION
83/09/06	13135	1.0 -	\$81.20	\$81.20 57028	\$81.20
83/09/09	13138	0.5 -	\$81.20	\$40.60 57043	\$40.60
83/09/10	13140	57043 0.7 -	\$81.20	\$56.84	\$56.84
83/09/11	13141	2.5 -	\$81.20	\$202.90 - 0642-0507	\$202.90
83/09/12	13142	57043 1.0 -	\$81.20	\$81.20	\$81.20
83/09/13	13143	1.1 -	\$81.20	\$89.32	\$89.32
83/09/14	13144	5.9 -	\$81.20	\$479.08	\$479.08
83/09/15	13145	5.6 -	\$81.20	\$454.72	\$454.72
83/09/16	13146	2.9 -	\$81.20	\$235.48	\$235.48

21.2

TOTAL PAYABLE

57043 - 1396.64

\$1,721.34

ADD & REV CORRECT			
PROJECT	200207	508	20290
	57028	8207	81.20
	57043	8207	13724
			1721.34

CX 110 OCT 27 1983

FLIGHT TICKET INVOICE

ARTERER

Canamax Resources 67

ADDRESS 601-535 Thurlow St

Vancouver B.C. POSTAL CODE V6E 3L6

DATE 23 SEPT 83
A/C FHM
TYPE 205
BASE WATSON

WATSON LAKE (403) 536-7766

PILOTS NAME
PRINT
SIGNATURE

REMARKS	PASS	CARGO	TIME
WATSON MILE 701			.6
DRILL MOVE			.5
701 - WATSON			.5
TERMS NET 10 DAYS	TOTALS		1.6

CK. 1046 OCT 14 1983

FUEL SUPPLIED BY CUST. FRONTIER FRONTIER FUEL

6.5 GALS. FROM WATSON AT 1.58 PER GAL.
 GALS. FROM _____ AT _____ PER GAL.
 GALS. FROM _____ AT _____ PER GAL.

FUEL COST \$ 380.48
 FLYING 1.6 HRS. AT \$ 1175 \$ 1,880.00
 EXPENSES \$

AUTHORIZED BY
 PRINT Tony Whitehins
 SIGNATURE
 57043
 8207

TICKET No 22927
 CHEQUE CASH CHARGE
 P.O.
 TOTAL \$ 2260.48

By signing of this flight report I acknowledge that the terms and conditions thereof as set forth in the tariff with the A.T.B. are available for examination at Frontier Helicopters Ltd.

A 1HX
Vanouver B.C.
V6E-3L6

NORCAN LEASING LTD
VANCOUVER OFFICE

10. KILOMETERS IN	4	4	7	1	3
-------------------	---	---	---	---	---

11. KILOMETERS OUT	4	0	6	4	7
--------------------	---	---	---	---	---

12. MIN. KILOMETERS					
13. KILOMETERS DRIVEN			4	0	6

14. DATE & TIME IN	Oct 17/83	15. DATE & TIME OUT	Sept 9/83 17:00
--------------------	-----------	---------------------	-----------------

2. TYPE OF PAYMENT:	ADD & EXT. CORRECT
<input checked="" type="checkbox"/> C.C.	<input type="checkbox"/> CASH
C/C NAME	AMOUNT
AUTHD BY	

16. DAYS UTILIZED	13	82	44
17. TOTAL TIME & F.M.	3	0	0

1. VEHICLE NO.	610216	MAKE	GMC	CR. T ¹ 218	NOV 15 1983
LICENSE NO.	RBA-5	PROVINCE	Y.T.	4x4 Cab	
WT. LIMIT GVW/GCW		WILL BE USED IN PROVINCE(S) OR STATE(S) OF			

18. TIME	3	19. RATE	\$12.50	
	5		\$300.00	

RENTER IS RESPONSIBLE FOR ALL OVERHEAD AND CARGO DAMAGES WHETHER OR NOT THE COLLISION DAMAGE WAIVER IS ACCEPTED

20. SUB TOTAL	3032	44
21. LESS	10%	
22. TOTAL TIME & F.M.	2729	20

3. OPTIONAL EQUIPMENT/MISC.	jackall + 4 way wrs	715	00
VEHICLE WILL BE RETURNED	10/83	TO	
TERCITY CHARGE			
EXCESS IN DAMAGES			

25. COLLISION DAMAGE WAIVER	SEE PARA 7
DAYS	<input type="checkbox"/>
WKS	<input type="checkbox"/>
MTHS	<input type="checkbox"/>
26. AMOUNT DEDUCTIBLE	\$1500.00

23. ADD'L CHARGES	304	00
24. SUB TOTAL	3033	20
27. SUB TOTAL	3033	20

ADDITIONAL TERMS AND CONDITIONS:
 \$3.00 per day w/mch.

28. TAX:	% OF SUB TOTAL
----------	----------------

THIS IS YOUR INVOICE PAYABLE ON RECEIPT TO:
NORCAN LEASING LTD
 917 - 4 ALASKA HIGHWAY, WHITEHORSE, YUKON, Y1A 1A1

29. FUEL	10 GAL @ 2.64	FUEL	26	40
TICKET NO		30. TOTAL CHANGE	3059	60

6. I HAVE READ THE TERMS AND CONDITIONS ON BOTH SIDES OF THIS RENTAL AGREEMENT AND ACCEPT THEM TO.
 Signature: *T. Hitchens*
 CUSTOMER IS LIABLE FOR ALL PARKING AND TRAFFIC VIOLATIONS

31. ROAD EXPENSES	1			
32. NET CHARGES	2			
TOTAL DEPOSIT				

7. DRIVER NAME	Tommy Hitchens	AGE	
ADDRESS	c/o 601/535 Thurlow		
LICENSE	3414236	PROV	Vanouver B.C

34. TOTAL AMOUNT DUE	3059	60
35. CASH REFUND REC'D BY		
36. IN BY SIGNATURE		

8. OUT BY SIGNATURE
 V6E-3L6

02381

WHI ON THE ROAD:
 - OBTAIN RECEIPTS FOR ALL REIMBURSABLE EXPENSES AND PRESENT THEM WITH THIS COPY AT CHECK IN.
 - REPORT ACCIDENTS IMMEDIATELY TO LOCAL POLICE AND CALL NORCAN COLLECT.
 - IF DELAYED IN RETURNING VEHICLE PLEASE CALL NORCAN COLLECT.



GAS NOT INCLUDED IN RATES \$ 1218 NOV 15 1983

WHITE - ORIGINAL • YELLOW - CUSTOMER COPY • PINK - INVOICE COPY • GREEN - ACCTS. RECEIVABLE • BUFF - VEHICLE FILE

#601-535 THURLOW ST.
 BILLING ADDRESS
 VANCOUVER B.C. V6E 3L6
 OIL-FUEL USED 2.5 XY FULL
 TMTA CUST. FROM

4161517-4X16 ALTA
 A/C TYPE 2043 AIRCRAFT REGISTRATION G
 6740
 FLIGHT DATE 15 09 83
 PURCHASE ORDER NO.

FROM	MILES	HOURS	ZONE	REMARKS - NO. OF PASS. - FREIGHT LBS.
XY				
TO				T. RIVER DRILLING
XY		3.7		

AP 3
 H-3011-2
 ADD & GET CORRECT
 57043 8207 3349.55
 POSTED H.S. VANCOUVER OFFICE
 9129 CK 1055 OCT 17 1983

CANAMAX
 RECEIVED
 SEP 26 1983
 VANCOUVER OFFICE
 OCT 17 1983

TERMS NET 30 DAYS
 2% INTEREST PER MONTH (24% PER ANNUM) WILL
 BE CHARGED ON ALL OUTSTANDING AMOUNTS
 OVER 30 DAYS
 X *[Signature]*
 CAPT *[Signature]*
 CO-PILOT'S NAME
 ENGINEER'S NAME
 CHArlie HAKER
 FLIGHT ATTENDANT

WAITING TIME	0	/HR.
FUEL:	795.0	149 GAL 389.55
FUEL:	0	/GAL.
MEALS & LODGING		
OTHER		
OTHER		

RA TOTAL \$3349.55
 FLIGHT REPORT INVOICE

Ad
Ad

ARCTIC DIAMOND DRILLING LTD.

SEP 26 1983

OCT 11 1983

184 Industrial Road, Whitehorse, Yukon Y1A 2V1

VANCOUVER OFFICE

VANCOUVER OFFICE

September 20, 1983

Invoice # 2290

Canamax Resources Inc.
601 - 535 Thurlow Street
Vancouver, B.C.
V6E 3L6

Tootsee River Drilling Project

Drilling charges September 13 - 15, 1983

Mobilization

Re clause 5 (a) of contract 1/2 of 2800.00 1400.00

Moving to first hole and setting up camp
96 Man hours @ \$29.00 per hour 2784.00

4184.00 ✓

Handwritten notes:
HUBBARD - 102

ACC. NO.	57043	8089	4184.00
Date		09/18/83	

CK. 1079 OCT 18 1983

30 DAYS
RECEIPT
OCT 26 1983

Handwritten signature:
Dony Williams
57043

Ad
Ad

ARCTIC DIAMOND DRILLING LTD.

184 Industrial Road, Whitehorse, Yukon Y1A 2V1 (403) 667-6434

OCT 25 1983

VANCOUVER, B.C.

October 17, 1983

Invoice # 2293

Canamax Resources Inc.
601 - 535 Thurlow Street
Vancouver, B. C.
V6E 3L6

Tootse River Project.

Drilling charges for the period September 16 - 30, 1983

Hole # 83 - A1 - 70° x NQ

44,60 Man hours @ 29.00 per hour

1740.00 1276.00 ✓

Core Drilling

0 - 693' = 693' @ 21.00 per foot

14553.00 ✓

Casing

0 - 20' = 20' @ 20.00 per foot

400.00 ✓

Water supply

24 Man hours @ 29.00 per hour

696.00 ✓

17389.00
16925.00

Hole # 83 - Az - 55° x NQ

Moving

72 Man hours @ 29.00 per hour

2088.00 ✓

18 Machine hours @ 12.00 per hour

216.00 ✓

Core Drilling

0' 750' = 750' @ 21.00 per foot

15750.00 ✓

750' - 1067' = 317' @ 22.00 per foot

6974.00 ✓

Casing

0 - 80' = 80' @ 20.00 per foot

1600.00 ✓

26628.00 ✓

ADD & EXT CORRECT	H.S.
APPROVED	DATE 10/26/83
57043-8089	45928.00

C/Fwd.....44017.00

AP # 3

43,553.00

CK 1219 NOV 15 1983 #3011-2

POSTED
10/28 H.S.



McCrory Holdings (Yukon) Ltd.

307 Jarvis Street, Whitehorse, Yukon Y1A 4K1

Office: 668-7106

Bill Preston
Res: (403) 667-7175
Terry McCrory
Res: (403) 633-5424

SEP 28 1983
Vancouver Office
Sept. 20, 1983

Canamex
601-535 Thurlow St.
Vancouver, B.C.
V6E 3I6

Attn: Tony Hitchins

Re: Drill pads and waterline cutting.
Tootsie River Area

Sept. 12-2men @ \$275.00 per man per day	=	\$ 550.00
13-2 " " " "	=	550.00
14-2 " " " "	=	550.00
15-2 " " " "	=	550.00
16-2 " " " "	=	550.00
Misc. explosives	=	50.00
Demob.	=	200.00
		<u>\$3000.00</u>

reduced to 2000

Total due = ~~\$3000.00~~

2450.00

*Payment made
to Terry McCrory*

Thank you

J. J. J. Clary

per McCrory Holdings (Yukon) Ltd.

ADD & EXT CORRECT			
PROJECT	ACCOUNT	SUB	AMOUNT
57043	8082		2400.00 ✓
57043	8199		50.00
			<u>2450.00</u>

*Tony Hitchins
57043*

*Pay
due 15/83*

*POSTED
TO LEDGER
10/03 H.S.*

CK. 1078 OCT 18 1983

CK. 1078 OCT 18 1983

Rancheria Hotel Ltd

Mile Post 70, Alaska Highway.

Yukon Territory

Y0A 1A0 Telephone: 851-6456

Canamay
601-535 Thurlow St
Whitehorse, Yb.

Date: Sept 30 1983

	Dr =	45733 ✓	73.00	GAS
	✓	45724	44.00	GAS
	✓	45728	64.00	GAS
	✓	45737	15.50	PROPANE
	✓	45749 ✓	55.00	GAS
	Room	✓	9.00	✓
	✓	✓	45.00	✓
	meat.	✓	86.50	
			<u>773.00 p.</u>	
	ADD & CORRECT	5	9518/13	
	PROJECT	57013 8154	237.00	
		57013 8226	1236.00	
			<u>473.00</u>	
			1071	OCT 18 1983

Rancheria Hotel Ltd.

Mile Post 710, Alaska Highway,

Yukon Territory

Y0A 1A0 Telephone: 861-6496

Baronix

Suite 601

*535 Huron St
Vancouver, B.C.*

OCT 25 1983
VANCOUVER OFFICE

Date *Oct 18* 19*83*

	<i>Meals</i>		<i>347.60</i>	
	<i>T. 15-16 Barman</i>		<i>450.00</i>	<i>✓</i>
	<i>Gas</i>			
	<i>3rd # 45510</i>		<i>71.00</i>	<i>✓</i>
	<i>v 45523</i>		<i>45.50</i>	<i>✓</i>
100% CORRECT		<i>✓</i>		
	<i>Which</i>	<i>20851/83</i>		
PR. NO.		AMOUNT		
<i>57031 8154</i>		<i>788.60</i>		
<i>57031 8226</i>		<i>45.50</i>		
<i>57043 8154</i>		<i>9.00</i>		
<i>57043 8226</i>		<i>71.00</i>		
	<i>914.10</i>	<i>CK. 1142</i>	<i>NOV 1 1983</i>	
	<i>Don [Signature]</i>			

Rossbacher Laboratory Ltd.

GEOCHEMICAL ANALYSTS & ASSAYERS

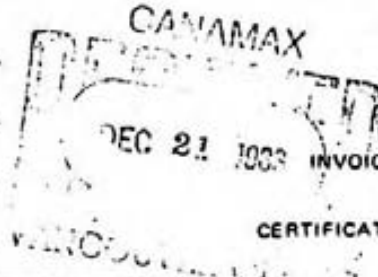
2225 S. SPRINGER AVE.,
BURNABY, B.C.
CANADA
TELEPHONE: 299-6910
AREA CODE: 604

CANAMAX RESOURCES INC.

601-535 Thurlow St.

Vancouver, B.C.

57043



DATE Nov 30, 1983

INVOICE NO. 4013

CERTIFICATE NO. as marked

ITEM	DESCRIPTION	SUB-TOTAL	TOTAL
174	Geochem analysis for 9 elements @ \$ 5.70	\$ 991.80	
14	8	72.80	
9	7	4.80	43.50
24	3	2.90	69.20
1	2	2.40	2.40
200 201	W	3.00	603.00
167	Sn	3.00	501.00
166	Au	3.50	581.00
44	F	3.50	154.00
61	Soil prep	0.50	30.50
79 180	Rock prep	2.00	360.00
5	Assays for Au	6.00	30.00
21	Au/Ag	9.50	199.50
9	Cu, Pb, Zn	16.50	148.50
11	Mo	6.00	66.00
26	WO ₃	8.00	208.00
			1 MB
			4056.30
			\$ 4,061.30

CK 1359

DEC 21 1983

TERMS - NET 30 DAYS

LCR1	1.11	17.11.11	1.11	1.11	1.11	1.11	1.11
83506	5	21	9	9	9	11	26
506 A	5	21	9	9	9	11	26

YUKON TERRITORY
BRITISH COLUMBIA

HEAR

HEAR 2

L E G E N D

- 6a Foliated light gray quartzite, arenite.
- 6b Yellowish rubby weathering dolomitic quartzite, arenite.
- 6c Dolomitic quartzite with variable calcisilicate mineral development.
- 6d Light green tremolite skarn.
- 6e Foliated variable hornfelsed and calcisilicate altered amphibolite.
- 4c Interbedded pale green calcisilicate and brown hornfels.

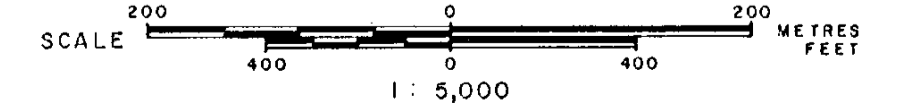
S Y M B O L S

- Grid line.
 - Legal corner post, claim boundary.
 - Claim unit boundary.
 - Stream.
 - Topographic contour (contour interval 10 metres).
 - Area of outcrop or felsenmeer, float, mineralized float.
 - Geological contact.
 - Jointing (inclined, vertical).
 - Bedding (inclined, horizontal).
 - Foliation.
 - Fold axis.
 - Fault (thrust fault, normal fault), showing downthrow.
 - Limit of fracture and breccia zone cemented by iron oxides.
 - Gossan or iron stain.
- | | | |
|--------------------------------|--------------------|-----------------|
| act. Actinolite | Mn Manganese stain | wo Wallastonite |
| Fe Iron oxide cemented breccia | py Pyrrhotite | v vein |
| hem. Botryoidal hematite | qtz quartz | |

CANAMAX RESOURCES INC.

TOOTSEE RIVER PROPERTY
HEAP CLAIMS
ATLIN MINING DIVISION - BRITISH COLUMBIA

GEOLOGICAL MAP
DIAMOND DRILL HOLE LOCATION



To accompany 1983 Report by: A. C. Hitchins.