

84-#41-11951

3125

ASSESSMENT REPORT
SUMMARY OF GEOLOGICAL
AND
GEOCHEMICAL SURVEYS
ON THE
PHIL 1 CLAIM GROUP
OMINECA MINING DIVISION

NTS: 93N/1

55°05'N - 124°08'W

**GEOLOGICAL BRANCH
ASSESSMENT REPORT**

11,951

R. Farmer
C.M. Rebagliati
Vancouver, B.C.

TABLE OF CONTENTS

PAGE NO.

SUMMARY OF CONCLUSIONS AND RECOMMENDATIONS	1
INTRODUCTION	2
CLAIMS	2
GEOLOGY	3
GEOCHEMICAL SURVEY	4
RESULTS	5
CONCLUSIONS AND RECOMMENDATIONS	5
COST STATEMENT	6
CERTIFICATE OF AUTHOR	7

APPENDIX

- a) Certificate of Analysis
- b) Geological & Geochemical Maps

LIST OF FIGURES

Figure 1:	Location of the Phil 1 Property	1:250 000
Figure 2:	Location of the Phil 1 Claim Group	1:50 000

SUMMARY OF CONCLUSIONS AND RECOMMENDATIONS

Soil geochemistry on the Phil 1 claim located only small, sporadic, low-contrast anomalies. Rocks are not significantly altered or mineralized.

Further work on the Phil 1 claim is not recommended.



INTRODUCTION

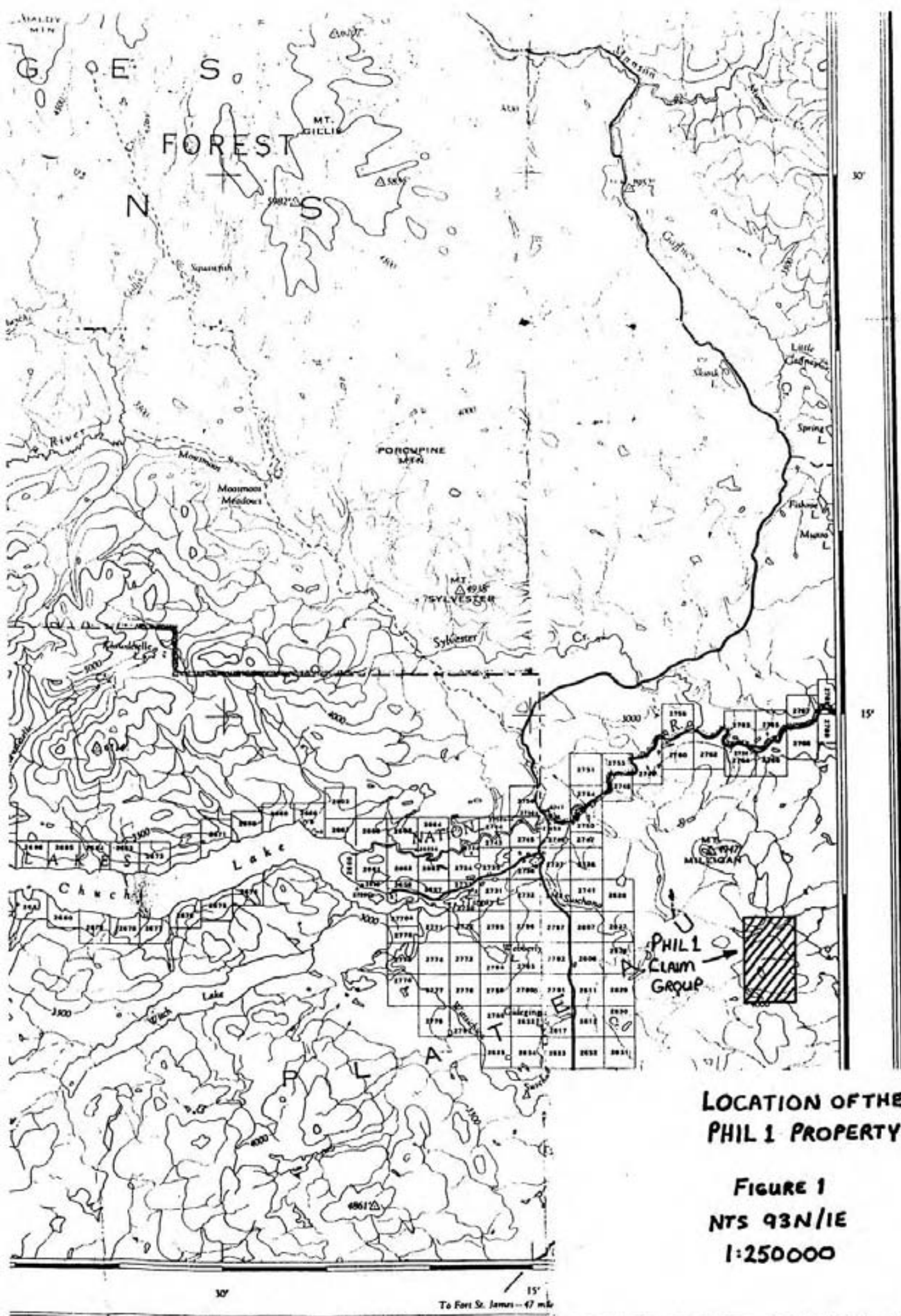
The Phil 1 claim group, located approximately 100 km north of Fort St. James, consists of six claims totalling 84 units (Fig.1). The group is located at 55°05'N latitude and 124°08'W longitude on NTS map sheet 93N/1 (Fig.2). A program consisting of grid controlled soil geochemical sampling, geological mapping and rock chip sampling was carried out on the Phil 1 claim between July and October 1983.

The property is underlain by alkaline volcanic rocks of the Takla Group, and by dioritic to monzonitic intrusives. The property lies adjacent to and within a pronounced aeromagnetic high.

Access to the area is via helicopter or float plane. The property is located along a north trending ridge marked by deep east-west trending valleys. Elevations vary between 1050 and 1250 metres above sea level. Vegetation consists of thick stands of spruce, jackpine and fir at lower elevations, and poplar and willow at higher elevations.

CLAIMS

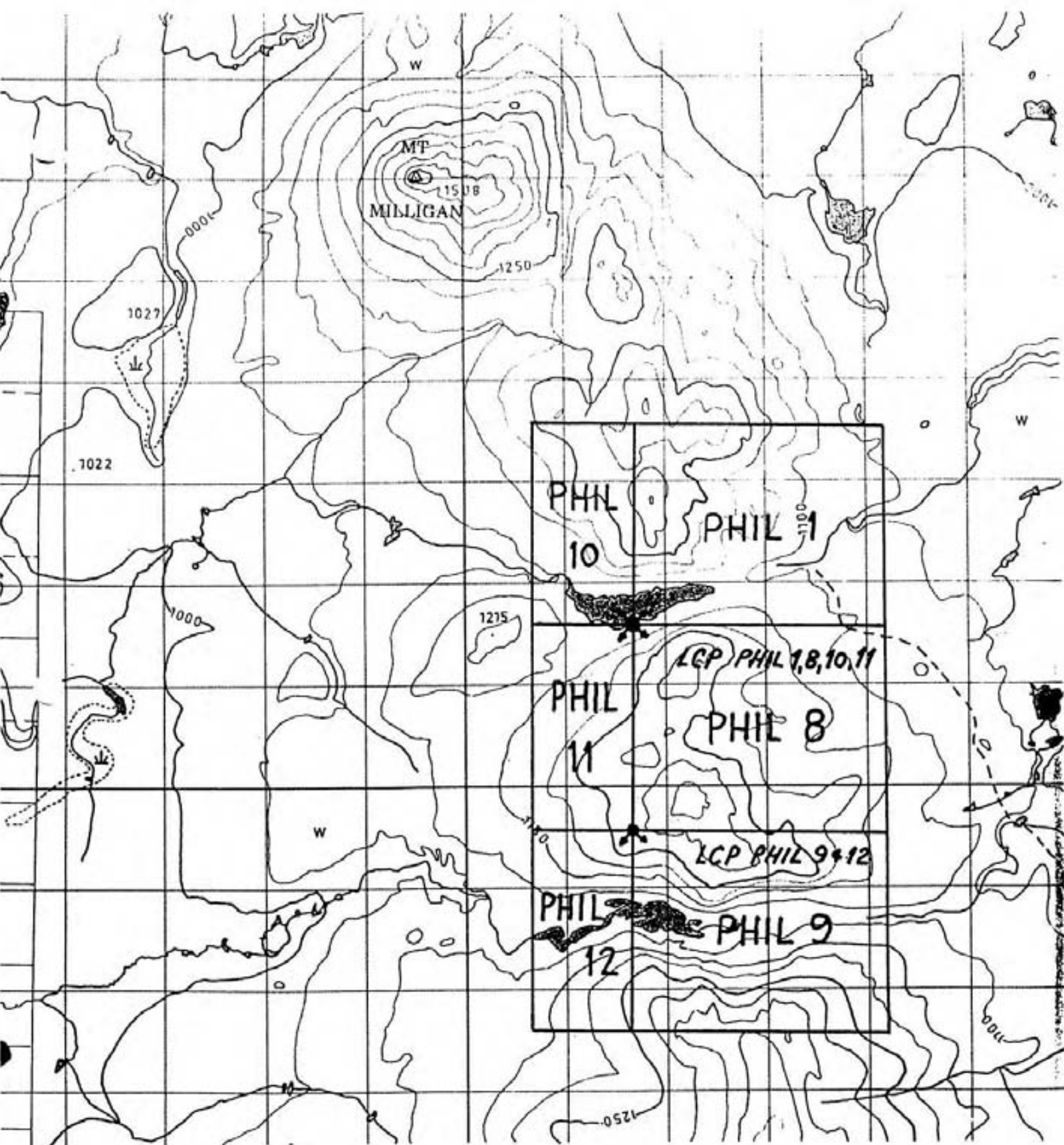
The claims are located in the Omineca Mining Division. The names and record numbers are as follows:



**LOCATION OF THE
PHIL 1 PROPERTY**

**FIGURE 1
NTS 93N/1E
1:250000**

To Fort St. James - 47 miles



LOCATION OF THE
PHIL 1 CLAIM GROUP
FIGURE 2

NTS 93N/IE
1:50000

<u>Claim Name</u>	<u>Units</u>	<u>Record No.</u>	<u>Record Date</u>
Phil 1	20	5013	28.02.83
Phil 8	20	6030	29.12.83
Phil 9	20	6031	29.12.83
Phil 10	8	6032	29.12.83
Phil 11	8	6033	29.12.83
Phil 12	8	6034	29.12.83
	<u>84</u>		
	Total	84	Units

A portion of the area had been staked previously. For information on this earlier work, the reader is referred to Assessment Report Nos. 4274, 4742, 5175 and 5371.

GEOLOGY

All work summarized in this report was carried out on the Phil 1 claim only.

The property is underlain by alkaline Takla Group volcanic rocks intruded by comagmatic dykes and plugs equivalent to the alkaline phase of the Hogem Batholith. The volcanics consist of green augite and amphibole porphyritic tuffs, breccias and minor flows. The northeastern 1/3 of the claim block is underlain by hornblende diorite to monzonite. Regional strike is north-south with a moderate westward dip.

The volcanic rocks show a weak alteration consisting of; chlorite,

epidote and carbonate. Alteration is more intense within a 10 m wide contact aureole adjacent to the intrusion in the central portion of the claim block. There, epidote is more pervasive and weak silicification and K-spar veining is present. Intrusive rocks show no evidence of alteration.

Minor disseminated pyrite is present, but no significant mineralization was observed anywhere on the property.

GEOCHEMICAL SURVEY

Amex Exploration Services Ltd. of Kamloops was contracted to establish a grid and collect soil samples over the 20-unit Phil 1 claim. The grid consists of an east-west baseline 2400 metres in length. Crosslines were established at 200 metre intervals running north from the baseline for a distance of 200 metres, for a total of 28.4 line km surveyed. All lines were flagged utilizing chain and compass for control, the south claim line was used as the baseline.

A total of 295 soil samples were collected at 100 metre intervals on the grid lines and baseline. All were analysed for copper, gold, silver, mercury and arsenic by Chemex Labs Ltd. of Vancouver.

Twenty-two rock chip samples were collected from outcrops during geological mapping, and were also analysed for copper, gold, silver, mercury, arsenic and zinc.

RESULTS

Neither soil nor rock chip samples generated significant results. A number of low contrast gold anomalies are present (60 ppb or less), however, they occur as isolated anomalies consisting of from one to three samples, and have little or no coincidence with other elements. The random distribution of these small anomalies suggests that they do not reflect a significant bedrock source.

CONCLUSIONS AND RECOMMENDATIONS

Both soil and rock geochemical results were disappointing, as no significant anomalies were located. The geological survey was likewise disappointing, in failing to discover areas of strong alteration or mineralization.

No further work should be contemplated for the Phil 1 claim until the entire claim block has been assessed.

COST STATEMENT

1.	Grid Preparation, geochemical soil survey Amex Exploration Services Ltd. - July 1983 28.6 km at \$219.22/km	\$ 6,269.69
2.	Geological Survey 10 Man days at \$70.00/day 5 Man days at \$65.00/day	700.00 325.00
3.	Food 15 Man days at \$17.50/day	262.50
4.	Transportation - Float Plane July 24, 1983 August 3, 1983 October 12, 1983 October 17, 1983	225.50 225.50 205.00 246.00
5.	Radio Rental- Helicom Avionics	50.00
6.	Geochemical Analysis - Chemex Labs Ltd. 296 Soil samples at \$13.80/sample analysed for Cu, Zn, Ag, As, Au 22 Rock chip samples at \$14.70/sample analysed for Cu, Zn, Ag, As, Au	4,084.80 323.40
7.	Drafting 5 Man days at \$160.00/day	800.00
8.	Report writing and typing 5 Man days at \$160.00/day	800.00
	TOTAL	<u>\$14,517.39</u>

CERTIFICATE

I, Randy Farmer, of #409-615 St. Georges Avenue, North Vancouver B.C. hereby certify that:

1. I am a geologist residing at the above address.
2. I am a graduate of Lakehead University, Thunder Bay, Ontario, with an Honours B.Sc. Degree in Geology (1980).
3. I have practised my profession for more than three years.
4. I supervised the geological and geochemical surveys and interpreted the results described herein.
5. I hold no interest, direct or indirect in the Phil 1 Group of Claims, which are the subject of this report.

Respectfully submitted,



R. Farmer
Project Geologist

Vancouver, B.C.
January 23, 1984

CERTIFICATE

I, C. M. Rebagliati, of Vancouver, in the Province of British Columbia, hereby certify the following:

1. That I am a registered Professional Engineer in the Province of British Columbia.
2. That I have practised my profession since graduation from the Haileybury School of Mines of Ontario in 1966 and from the Michigan Technological University in 1969 with a B.Sc. degree in Geological Engineering.
3. That I am presently employed by Selco - A Division of BP Exploration Canada Ltd. in Vancouver as Senior Geologist.
4. That I personally examined the Phil 1 property on October 14, 1983 to confirm and evaluate the exploration program conducted by R. Farmer and Amex Exploration Services Ltd. in June-October, 1983.

Vancouver, B.C.
January 31, 1984



APPENDIX

- a) Certificate of Analysis
- b) Geological & Geochemistry maps.



CHEMEX LABS LTD.

212 BROOKSBANK AVE.
NORTH VANCOUVER, B.C.
CANADA V7J 2C1

• ANALYTICAL CHEMISTS

• GEOCHEMISTS

• REGISTERED ASSAYERS

TELEPHONE: (604) 984-0221

TELEX: 043-52597

CERTIFICATE OF ANALYSIS

TO : SELCO MINING CORPORATION LTD

402 - 535 THURLOW ST.
VANCOUVER, B.C.
V6E 3L2

DEC 20 1983

CERT. # : A8316795-001-A

INVOICE # : 18316795

DATE : 19-DEC-83

P.O. # : NONE

10215

ATTN: MARK REBAGLIATI

PHIL 1

ROCK CHIP

Sample description	Prep code	Cu ppm	Zn ppm	Ag ppm	AS ppm	Au ppb FA+AA	
23215	205	71	50	0.1	2	5	--
23216	205	31	60	0.1	2	10	--
23217	205	44	47	0.1	4	<5	--
23218	205	17	30	0.1	5	<5	--
23219	205	54	65	0.1	3	10	--
23220	205	7	80	0.1	3	40	--
23221	205	85	65	0.1	4	<5	--
23222	205	88	53	0.1	4	5	--
23223	205	93	89	0.1	71	10	--
23224	205	26	50	0.1	2	10	--
23225	205	8	1	0.1	3	<5	--
23226	205	34	42	0.1	2	<5	--
23227	205	23	38	0.4	2	<5	--
23228	205	103	80	0.1	2	<5	--
23229	205	50	65	0.1	7	<5	--
23230	205	118	80	0.1	39	<5	--
23231	205	68	60	0.1	3	65	--
23232	205	86	69	0.1	27	5	--
23233	205	74	97	0.1	30	<5	--
23234	205	69	52	0.1	3	<5	--
23259	205	63	89	0.1	4	<5	--
23260	205	100	70	0.1	7	<5	--



MEMBER
CANADIAN TESTING
ASSOCIATION

Certified by ... *Hart Bichler* ...



CHEMEX LABS LTD.

212 BROOKSBANK AVE.
NORTH VANCOUVER, B.C.
CANADA V7J 2C1

• ANALYTICAL CHEMISTS

• GEOCHEMISTS

• REGISTERED ASSAYERS

TELEPHONE: (604) 984-0221

TELEX: 043-52597

CERTIFICATE OF ANALYSIS

TO : SELCO MINING CORPORATION LTD

402 - 535 THURLOW ST.
VANCOUVER, B.C.
V6E 3L2

CERT. # : A8316794-001-A

INVOICE # : I8316794

DATE : 28-DEC-83

P.O. # : NONE

PHIL 1 10215

JAN - 4³ 1984

SOILS

ATTN: MARK REBAGLIATI

Sample description	Prep code	Cu ppm	Zn ppm	Ag ppm	AS ppm	Au ppb FA+AA	
L6E 9+00N	201	20	80	0.1	4	<5	--
L6E 10+00N	201	21	50	0.1	11	10	--
L6E 13+00N	201	21	72	0.1	5	10	--
L6E 14+00N	201	29	60	0.1	16	<5	--
L6E 15+00N	201	19	40	0.1	9	10	--
L6E 16+00N	201	56	115	0.1	4	15	--
L6E 17+00N	201	20	45	0.1	5	25	--
L6E 18+00N	201	89	47	0.9	3	<5	--
L6E 19+00N	201	62	50	0.1	2	<5	--
L6E 20+00N	201	63	55	0.1	6	5	--
L6E 21+00N	201	72	52	0.1	1	<5	--
L6E 22+00N	201	78	46	1.0	4	5	--
L6E 23+00N	201	57	100	0.1	2	5	--
L6E 24+00N	201	44	84	0.1	4	<5	--
L6E 25+00N	201	40	42	0.2	3	5	--
L6E 26+00N	201	26	46	0.1	6	10	--
L6E 27+00N	201	19	88	0.1	6	5	--
L6E 28+00N	201	99	65	0.5	9	5	--
L6E 29+00N	201	20	93	0.3	5	5	--
L6E 30+00N	201	52	50	0.1	5	<5	--
L8E 9+00N	201	23	78	0.1	14	<5	--
L8E 13+00N	201	24	66	0.1	9	<5	--
L8E 14+00N	201	35	57	0.2	7	<5	--
L8E 15+00N	201	13	52	0.1	4	5	--
L8E 16+00N	201	14	49	0.1	4	<5	--
L8E 17+00N	201	20	32	0.1	5	15	--
L8E 18+00N	201	39	40	0.3	5	<5	--
L8E 19+00N	201	24	32	0.2	3	<5	--
L8E 20+00N	201	47	57	0.1	4	<5	--
L8E 21+00N	201	34	54	0.1	4	<5	--
L8E 22+00N	201	63	64	0.1	3	<5	--
L8E 23+00N	201	23	53	0.1	5	<5	--
L8E 24+00N	201	36	41	0.1	9	10	--
L8E 25+00N	201	65	45	0.1	3	<5	--
L8E 26+00N	201	48	43	0.1	5	10	--
L8E 27+00N	201	40	50	0.1	6	<5	--
L8E 28+00N	201	37	45	0.2	11	10	--
L8E 29+00N	201	89	68	0.2	9	10	--
L10E 9N	201	45	50	0.1	9	5	--
L11E 9N	201	22	83	0.1	7	<5	--

Hart Bichler

Certified by



MEMBER
CANADIAN TESTING
ASSOCIATION



CHEMEX LABS LTD.

212 BROOKSBANK AVE.
NORTH VANCOUVER, B.C.
CANADA V7J 2C1

TELEPHONE: (604) 984-0221
TELEX: 043-52597

• ANALYTICAL CHEMISTS

• GEOCHEMISTS

• REGISTERED ASSAYERS

CERTIFICATE OF ANALYSIS

TO : SELCO MINING CORPORATION LTD

402 - 535 THURLOW ST.
VANCOUVER, B.C.
V6E 3L2

CERT. # : A8316794-002-A

INVOICE # : 18316794

DATE : 28-DEC-83

P.O. # : NONE

PHIL 1 10215

³
JAN - ~~A~~ 1984

ATTN: MARK REBAGLIATI

Sample description	Prep code	Cu ppm	Zn ppm	Ag ppm	AS ppm	Au ppb FA+AA	
L12E 9N	201	36	75	0.1	6	10	--
L14E 9N	201	44	88	0.1	12	5	--
L15E 10N	201	239	110	0.1	75	10	--
L20E 9N	201	20	60	0.1	9	<5	--
L22E 8N	201	75	95	0.1	5	<5	--
L22E 9N	201	24	50	0.2	3	<5	--



MEMBER
CANADIAN TESTING
ASSOCIATION

Certified by *Hart Bickler*



CHEMEX LABS LTD.

212 BROOKSBANK AVE.
NORTH VANCOUVER, B.C.
CANADA V7J 2C1

TELEPHONE: (604) 984-0221
TELEX: 043-52597

• ANALYTICAL CHEMISTS

• GEOCHEMISTS

• REGISTERED ASSAYERS

CERTIFICATE OF ANALYSIS

TO : SELCO MINING CORPORATION LTD.,

STE. 402-535 THURLGW STREET
VANCOUVER, B.C.
V6E 3L2

AUG 22 1983

CERT. # : A8313472-001-A
INVOICE # : 18313472
DATE : 21-AUG-83
P.C. # : NONE
PHIL I

ATTN: MARK REBAGLIATI

Sample description	Prep code	Cu ppr	Ag ppm	AS ppm	Au ppb FA+AA		
L10+00E 13+00N	201	22	0.1	7	5	--	--
L10+00E 14+00N	201	14	0.1	3	10	--	--
L10+00E 15+00N	201	50	0.1	19	15	--	--
L10+00E 16+00N	201	60	0.1	5	5	--	--
L10+00E 17+00N	201	41	0.1	5	<5	--	--
L10+00E 18+00N	201	58	0.1	3	<5	--	--
L10+00E 19+00N	201	49	0.1	43	5	--	--
L10+00E 20+00N	201	114	0.1	6	<5	--	--
L10+00E 21+00N	201	30	0.1	6	<5	--	--
L10+00E 22+00N	201	44	0.1	5	<5	--	--
L10+00E 24+00N	201	47	0.1	4	<5	--	--
L10+00E 25+00N	201	50	0.1	6	<5	--	--
L10+00E 26+00N	201	74	0.1	10	5	--	--
L10+00E 27+00N	201	16	0.1	4	5	--	--
L10+00E 28+00N	201	45	0.1	15	5	--	--
L10+00E 29+00N	201	55	0.1	2	5	--	--
L10+00E 30+00N	201	23	0.1	14	5	--	--
BL10+00N 11+00E	201	110	0.1	6	<10	--	--
BL10+00N 12+00E	201	110	0.1	6	10	--	--
BL10+00N 13+00E	201	210	0.2	9	5	--	--
BL10+00N 14+00E	201	190	0.1	20	5	--	--
BL10+00N 17+00E	201	35	0.2	110	5	--	--
BL10+00N 18+00E	201	101	0.1	16	10	--	--
BL10+00N 19+00E	201	27	0.1	17	10	--	--
BL10+00N 20+00E	201	70	0.1	11	5	--	--
BL10+00N 21+00E	201	46	0.1	6	5	--	--
BL10+00N 22+00E	201	50	0.2	14	15	--	--
BL10+00N 23+00E	201	40	0.1	12	<10	--	--
BL10+00N 25+00E	201	25	0.1	2	5	--	--
BL10+00N 26+00E	201	25	0.1	6	<5	--	--
BL10+00N 27+00E	201	34	0.1	3	10	--	--
BL10+00N 28+00E	201	17	0.3	3	10	--	--
BL10+00N 30+00E	201	22	0.1	9	5	--	--
BL10+00N 31+00E	201	25	0.1	9	15	--	--
BL10+00N 32+00E	201	27	0.3	7	5	--	--
BL10+00N 33+00E	201	25	0.1	9	5	--	--
BL10+00N 34+00E	201	20	0.1	4	10	--	--
L12+00E 13+00N	201	17	0.2	5	10	--	--
L12+00E 14+00N	201	17	0.1	9	<5	--	--
L12+00E 15+00E	201	23	0.1	4	30	--	--

Certified by *Hart Bichler*





CHEMEX LABS LTD.

212 BROOKSBANK AVE.
NORTH VANCOUVER, B.C.
CANADA V7J 2C1

TELEPHONE: (604) 984-0221
TELEX: 043-52597

- ANALYTICAL CHEMISTS

- GEOCHEMISTS

- REGISTERED ASSAYERS

CERTIFICATE OF ANALYSIS

TO : SELCO MINING CORPORATION LTD.,

STE. 402-535 THURLOW STREET
VANCOUVER, B.C.
V6E 3L2

AUG 22 1983

CERT. # : AB313472-002-A
INVOICE # : 18313472
DATE : 21-AUG-83
P.C. # : NONE
PHIL 1

ATTN: MARK REBAGLIATI

Sample description	Prep code	Cu ppm	Ag ppm	AS ppm	AU ppm FA+AA		
L12+00E 16+00N	201	29	0.1	5	<5	--	--
L12+00E 18+00N	201	37	0.1	5	10	--	--
L12+00E 19+00N	201	31	0.1	5	15	--	--
L12+00E 20+00N	201	23	0.1	5	10	--	--
L12+00E 21+00N	201	29	0.1	3	<5	--	--
L12+00E 22+00N	201	15	0.1	4	<5	--	--
L12+00E 23+00N	201	35	0.1	5	20	--	--
L12+00E 24+00N	201	38	0.1	5	5	--	--
L12+00E 25+00N	201	25	0.1	6	<5	--	--
L12+00E 26+00N	201	22	0.1	4	<5	--	--
L12+00E 27+00N	201	43	0.1	5	<5	--	--
L12+00E 28+00N	201	14	0.1	3	5	--	--
L12+00E 30+00N	201	190	0.1	3	<5	--	--
L14+00E 11+00N	201	36	0.1	25	<5	--	--
L14+00E 14+00N	201	55	0.1	6	10	--	--
L14+00E 17+00N	201	45	0.2	5	<5	--	--
L14+00E 18+00N	201	16	0.1	17	<5	--	--
L14+00E 19+00N	203	60	0.1	16	<5	--	--
L14+00E 20+00N	201	30	0.1	12	5	--	--
L14+00E 21+00N	201	17	0.1	5	<5	--	--
L14+00E 22+00N	201	18	0.1	7	<5	--	--
L14+00E 23+00N	201	32	0.1	9	<5	--	--
L14+00E 24+00N	201	16	0.1	4	10	--	--
L14+00E 25+00N	201	25	0.1	7	5	--	--
L14+00E 26+00N	201	34	0.1	5	<5	--	--
L14+00E 27+00N	201	23	0.1	6	10	--	--
L14+00E 28+00N	201	13	0.1	3	<5	--	--
L14+00E 29+00N	201	32	0.1	5	5	--	--
L14+00E 30+00N	201	29	0.1	4	10	--	--
T/L 11+00	203	48	0.1	27	20	--	--
T/L15+00N 13+00E	201	25	0.1	4	10	--	--
T/L15+00N 14+00E	201	15	0.1	4	5	--	--
T/L15+00N 15+00E	201	41	0.1	5	5	--	--
T/L15+00N 16+00E	201	27	0.1	3	<5	--	--
T/L15+00N 17+00E	201	26	0.1	3	5	--	--
T/L15+00N 18+00E	201	43	0.1	9	5	--	--
T/L15+00N 19+00E	201	30	0.1	6	<5	--	--
L16+00E 11+00N	201	26	0.1	12	5	--	--
L16+00E 12+00N	201	55	0.1	9	>	--	--
L16+00E 14+00N	201	55	0.1	4	<5	--	--



Certified by *Hart Bichler*



CHEMEX LABS LTD.

212 BROOKSBANK AVE.
NORTH VANCOUVER, B.C.
CANADA V7J 2C1

• ANALYTICAL CHEMISTS

• GEOCHEMISTS

• REGISTERED ASSAYERS

TELEPHONE: (604) 984-0221

TELEX: 043-52597

CERTIFICATE OF ANALYSIS

TO : SELCO MINING CORPORATION LTD.,

STE. 402-535 THURLOW STREET
VANCOUVER, B.C.
V6E 3L2

CERT. # : A8313472-C03-A

INVOICE # : 18313472

DATE : 21-AUG-83

P.C. # : NONE

PHIL 1

AUG 27 1983

ATTN: MARK REBAGLIATI

Sample description	Prep code	Cu ppm	Ag ppm	AS ppm	Au ppb FA+AA		
L16+00E 16+00N	201	14	0.1	5	10	--	--
L16+00E 17+00N	201	27	0.1	7	<5	--	--
L16+00E 18+00N	201	33	0.2	9	<5	--	--
L16+00E 19+00N	201	35	0.1	6	5	--	--
L16+00E 20+00N	201	23	0.1	10	<5	--	--
L16+00E 21+00N	201	60	0.2	14	<5	--	--
L16+00E 22+00N	201	15	0.1	4	<5	--	--
L16+00E 23+00N	201	14	0.1	4	<5	--	--
L16+00E 24+00N	201	28	0.1	6	<5	--	--
L16+00E 25+00N	201	28	0.1	5	<5	--	--
L16+00E 27+00N	201	86	0.2	6	<5	--	--
L16+00E 28+00N	201	140	0.6	5	10	--	--
L16+00E 29+00N	201	190	0.4	6	5	--	--
L16+00E 30+00N	201	28	0.1	5	5	--	--
L18+00E 11+00N	201	68	0.1	17	<5	--	--
L18+00E 12+00N	201	450	0.8	15	<5	--	--
L18+00E 13+00N	217	45	0.2	3	5	--	--
L18+00E 14+00N	201	18	0.3	3	5	--	--
L18+00E 16+00N	201	23	0.1	5	<5	--	--
L18+00E 17+00N	201	21	0.1	4	5	--	--
L18+00E 18+00N	201	81	0.1	6	<5	--	--
L18+00E 19+00N	201	50	0.1	19	5	--	--
L18+00E 20+00N	201	34	0.1	11	5	--	--
L18+00E 21+00N	201	45	0.1	10	<5	--	--
L18+00E 22+00N	201	22	0.1	38	<5	--	--
L18+00E 23+00N	201	25	0.1	7	5	--	--
L18+00E 24+00N	201	13	0.1	6	5	--	--
L18+00E 25+00N	201	50	0.1	7	<5	--	--
L18+00E 26+00N	201	27	0.1	4	10	--	--
L18+00E 27+00N	201	18	0.1	4	20	--	--
L18+00E 28+00N	201	33	0.1	6	5	--	--
L18+00E 29+00N	201	13	0.1	4	5	--	--
L18+00E 30+00N	201	20	0.1	4	<5	--	--
L20+00E 11+00N	201	30	0.1	6	<5	--	--
L20+00E 14+00N	201	16	0.1	4	<5	--	--
L20+00E 15+00N	201	120	0.1	5	<5	--	--
L20+00E 16+00N	201	42	0.1	9	<5	--	--
L20+00E 17+00N	201	21	0.2	5	<5	--	--
L20+00E 19+00N	201	15	0.1	5	<5	--	--
L20+00E 20+00N	201	23	0.1	7	15	--	--



Certified by Hart Bichler



CHEMEX LABS LTD.

212 BROOKSBANK AVE.
NORTH VANCOUVER, B.C.
CANADA V7J 2C1

• ANALYTICAL CHEMISTS

• GEOCHEMISTS

• REGISTERED ASSAYERS

TELEPHONE: (604) 984-0221

TELEX: 043-52597

CERTIFICATE OF ANALYSIS

TO : SELCC MINING CORPORATION LTD.,

STE. 402-535 THURLCOW STREET
VANCOUVER, B.C.
V6E 3L2

AUG 22 1983

CERT. # : A8313472-004-A

INVOICE # : 18313472

DATE : 21-AUG-83

P.C. # : NONE

PHIL 1

ATTN: MARK REBAGLIATI

Sample description	Prep code	Cu ppm	Ag ppm	AS ppm	Au ppb FA+AA		
L20+00E 21+00N	201	17	0.1	5	<5	--	--
L20+00E 22+00N	201	25	0.1	7	<5	--	--
L20+00E 23+00N	201	25	0.1	10	<5	--	--
L20+00E 24+00N	201	35	0.1	9	30	--	--
L20+00E 25+00N	201	53	0.1	5	5	--	--
L20+00E 26+00N	201	70	0.1	6	<5	--	--
L20+00E 27+00N	201	39	0.1	6	30	--	--
L20+00E 28+00N	201	21	0.1	6	<5	--	--
L20+00E 29+00N	203	71	0.8	4	<5	--	--
L20+00E 30+00N	201	28	0.1	4	<5	--	--



MEMBER
CANADIAN TESTING
ASSOCIATION

Certified by *Hart Buchler*



CHEMEX LABS LTD.

212 BROOKSBANK AVE.
NORTH VANCOUVER, B.C.
CANADA V7J 2C1

• ANALYTICAL CHEMISTS

• GEOCHEMISTS

• REGISTERED ASSAYERS

TELEPHONE: (604) 984-0221

TELEX: 043-52597

CERTIFICATE OF ANALYSIS

TO : SELCO MINING CORPORATION LTD.,

STE. 402-535 THURLOW STREET
VANCOUVER, B.C.
V6E 3L2

AUG 22 1983

CERT. # : A8313473-001-A

INVOICE # : 18313473

DATE : 21-AUG-83

P.O. # : NONE

PHIL 1

ATTN: MARK REBAGLIATI

Sample description	Prep code	Cu ppm	Ag ppm	AS ppm	Au ppp FA+AA		
L22+00E 11+00N	201	50	0.1	10	5	--	--
L22+00E 12+00N	201	33	0.1	9	5	--	--
L22+00E 13+00N	201	40	0.1	6	5	--	--
L22+00E 14+00N	201	25	0.1	7	10	--	--
L22+00E 16+00N	201	41	0.1	10	5	--	--
L22+00E 17+00N	201	31	0.1	6	<5	--	--
L22+00E 18+00N	201	25	0.1	5	<5	--	--
L22+00E 19+00N	201	17	0.2	5	5	--	--
L22+00E 20+00N	201	34	0.2	7	5	--	--
L22+00E 21+00N	201	31	0.1	6	5	--	--
L22+00E 22+00N	201	25	0.1	10	<5	--	--
L22+00E 23+00N	201	49	0.1	9	<5	--	--
L22+00E 24+00N	201	30	0.1	7	<5	--	--
L22+00E 25+00N	201	29	0.1	9	<5	--	--
L22+00E 26+00N	201	51	0.1	7	20	--	--
L22+00E 27+00N	201	25	0.1	5	<5	--	--
L22+00E 29+00N	201	35	0.1	7	<5	--	--
L22+00E 30+00N	201	40	0.1	6	<5	--	--
L24+00E 14+00N	201	81	0.1	11	<5	--	--
L24+00E 17+00N	201	28	0.1	5	<5	--	--
L24+00E 18+00N	201	22	0.1	5	<5	--	--
L24+00E 19+00N	201	36	0.1	4	5	--	--
L24+00E 20+00N	201	45	0.1	6	<5	--	--
L24+00E 21+00N	201	33	0.1	10	<5	--	--
L24+00E 22+00N	201	36	0.3	6	<5	--	--
L24+00E 23+00N	201	43	0.1	11	<5	--	--
L24+00E 24+00N	201	24	0.8	3	20	--	--
L24+00E 25+00N	201	16	0.1	4	<5	--	--
L24+00E 26+00N	201	14	0.1	5	5	--	--
L24+00E 27+00N	201	26	0.1	7	<5	--	--
L24+00E 28+00N	201	140	0.2	10	<5	--	--
L24+00E 29+00N	201	20	0.1	5	<5	--	--
L24+00E 30+00N	201	21	0.1	5	<5	--	--
L26+00E 11+00N	201	28	0.1	14	<5	--	--
L26+00E 12+00N	201	16	0.1	6	<5	--	--
L26+00E 14+00N	201	22	0.9	3	20	--	--
L26+00E 15+00N	201	15	0.1	7	5	--	--
L26+00E 16+00N	201	29	0.1	7	<5	--	--
L26+00E 17+00N	201	28	0.1	9	<5	--	--
L26+00E 18+00N	201	35	0.2	11	<5	--	--



MEMBER
CANADIAN TESTING
ASSOCIATION

Certified by *Hart Bichler*



CHEMEX LABS LTD.

212 BROOKSBANK AVE.
NORTH VANCOUVER, B.C.
CANADA V7J 2C1

• ANALYTICAL CHEMISTS

• GEOCHEMISTS

• REGISTERED ASSAYERS

TELEPHONE: (604) 984-0221

TELEX: 043-52597

CERTIFICATE OF ANALYSIS

TO : SELCO MINING CORPORATION LTD.,

STE. 402-535 THURLOW STREET
VANCOUVER, B.C.
V6E 3L2

AUG 22 1983

CERT. # : A8313473-002-A

INVOICE # : 18313473

DATE : 21-AUG-83

P.O. # : NONE

PHIL 1

ATTN: MARK REBAGLIATI

Sample description	Prep code	Cu ppm	Ag ppm	AS ppm	Au ppb FA+AA		
L26+00E 19+00N	203	30	0.3	5	<5	--	--
L26+00E 20+00N	201	37	0.3	4	<5	--	--
L26+00E 21+00N	201	39	0.2	10	<5	--	--
L26+00E 22+00N	201	27	0.2	4	<5	--	--
L26+00E 23+00N	203	30	0.1	6	<5	--	--
L26+00E 24+00N	201	37	0.1	10	<5	--	--
L26+00E 25+00N	201	30	0.1	6	<5	--	--
L26+00E 26+00N	201	18	0.1	4	<5	--	--
L26+00E 27+00N	201	50	0.1	4	<5	--	--
L26+00E 28+00N	201	43	0.1	4	<5	--	--
L26+00E 29+00N	201	33	0.1	7	<5	--	--
L26+00E 30+00N	201	38	0.1	10	<5	--	--
L28+00E 11+00N	201	37	0.2	12	<5	--	--
L28+00E 12+00N	201	18	0.1	5	<5	--	--
L28+00E 13+00N	201	27	0.1	3	40	--	--
L28+00E 14+00N	217	44	0.7	1	<5	--	--
L28+00E 15+00N	201	15	0.1	6	5	--	--
L28+00E 16+00N	201	14	0.2	3	<5	--	--
L28+00E 17+00N	201	20	0.3	4	<5	--	--
L28+00E 18+00N	201	14	0.1	2	<5	--	--
L28+00E 19+00N	201	23	0.1	6	<5	--	--
L28+00E 20+00N	201	31	0.1	3	<5	--	--
L28+00E 21+00N	201	30	0.1	7	<5	--	--
L28+00E 22+00N	201	16	0.1	4	<5	--	--
L28+00E 23+00N	217	110	0.1	5	5	--	--
L23+00E 24+00N	201	14	0.1	4	5	--	--
L28+00E 25+00N	201	15	0.1	3	35	--	--
L28+00E 26+00N	201	15	0.1	4	5	--	--
L28+00E 27+00N	201	14	0.1	4	5	--	--
L28+00E 28+00N	217	14	0.1	2	20	--	--
L28+00E 29+00N	201	18	0.1	5	5	--	--
L28+00E 30+00N	201	34	0.1	6	<5	--	--
L30+00E 11+00N	201	24	0.1	7	5	--	--
L30+00E 12+00N	201	24	0.1	6	5	--	--
L30+00E 13+00N	201	32	0.1	6	5	--	--
L30+00E 15+00N	201	13	0.1	4	5	--	--
L30+00E 16+00N	201	24	0.1	5	15	--	--
L30+00E 17+00N	201	14	0.1	2	45	--	--
L30+00E 18+00N	201	33	0.1	3	10	--	--
L30+00E 19+00N	201	25	0.1	6	5	--	--

Certified by *Hart Buchler*



MEMBER
CANADIAN TESTING
ASSOCIATION



CHEMEX LABS LTD.

212 BROOKSBANK AVE.
NORTH VANCOUVER, B.C.
CANADA V7J 2C1

• ANALYTICAL CHEMISTS

• GEOCHEMISTS

• REGISTERED ASSAYERS

TELEPHONE: (604) 984-0221
TELEX: 043-52597

CERTIFICATE OF ANALYSIS

TO : SELCO MINING CORPORATION LTD.,

STE. 402-535 THURLOW STREET
VANCOUVER, B.C.
V6E 3L2

AUG 22 1983

CERT. # : A8313473-003-A
INVOICE # : 18313473
DATE : 21-AUG-83
P.O. # : NUNE
PHIL 1

ATTN: MARK REBAGLIATI

Sample description	Prep code	Cu ppm	Ag ppm	AS ppm	Au ppb FA+AA		
L30+00E 22+00N	201	22	0.1	5	5	--	--
L30+00E 25+00N	201	30	0.1	5	<5	--	--
L30+00E 26+00N	201	38	0.1	6	<5	--	--
L30+00E 27+00N	203	38	0.1	5	<5	--	--
L30+00E 28+00N	203	34	0.1	6	<5	--	--
L30+00E 29+00N	201	23	0.1	5	5	--	--
L30+00E 30+00N	201	21	0.1	7	5	--	--
L32+00E 11+00N	201	26	0.1	9	10	--	--
L32+00E 12+00N	201	20	0.1	9	<5	--	--
L32+00E 14+00N	217	8	0.1	4	N.S.S.	--	--
L32+00E 15+00N	217	8	0.1	3	<10	--	--
L32+00E 16+00N	201	26	0.1	6	<5	--	--
L32+00E 17+00N	203	35	0.1	7	<5	--	--
L32+00E 18+00N	203	29	0.1	5	<5	--	--
L32+00E 19+00N	201	36	0.1	4	5	--	--
L32+00E 20+00N	217	80	0.1	7	<5	--	--
L32+00E 21+00N	201	19	0.1	3	5	--	--
L32+00E 22+00N	203	26	0.1	6	5	--	--
L32+00E 23+00N	201	21	0.1	7	5	--	--
L32+00E 24+00N	201	19	0.1	1	5	--	--
L32+00E 25+00N	203	18	0.1	4	5	--	--
L32+00E 26+00N	201	20	0.1	7	<5	--	--
L32+00E 27+00N	201	18	0.1	4	<5	--	--
L32+00E 28+00N	201	14	0.3	6	10	--	--
L32+00E 29+00N	201	29	0.1	5	5	--	--
L32+00E 30+00N	203	18	0.1	5	5	--	--
L34+00E 11+00N	203	25	0.2	6	5	--	--
L34+00E 12+00N	201	24	0.1	7	<5	--	--
L34+00E 13+00N	201	49	0.1	7	5	--	--
L34+00E 14+00N	201	14	0.1	3	<5	--	--
L34+00E 15+00N	203	29	0.1	5	<5	--	--
L34+00E 16+00N	201	16	0.1	5	20	--	--
L34+00E 19+00N	201	18	0.1	4	<5	--	--
L34+00E 20+00N	201	40	0.1	5	<5	--	--
L34+00E 21+00N	201	20	0.1	5	<5	--	--
L34+00E 22+00N	203	39	0.1	6	5	--	--
L34+00E 23+00N	203	26	0.1	5	5	--	--
L34+00E 25+00N	201	13	0.1	2	<5	--	--
L34+00E 27+00N	203	21	0.1	6	5	--	--
L34+00E 28+00N	203	31	0.1	7	<5	--	--

Certified by Hart Bichler





CHEMEX LABS LTD.

212 BROOKSBANK AVE.
 NORTH VANCOUVER, B.C.
 CANADA V7J 2C1
 TELEPHONE: (604) 984-0221
 TELEX: 043-52597

• ANALYTICAL CHEMISTS • GEOCHEMISTS • REGISTERED ASSAYERS

CERTIFICATE OF ANALYSIS

TO : SELCO MINING CORPORATION LTD.,

STE. 402-535 THURLOW STREET
 VANCOUVER, B.C.
 V6E 3L2

CERT. # : A8313850-001-A
 INV. # : 18313850
 DATE : 18-AUG-83
 P.O. # : NONE
 PHIL 1

AUG 18 1983

ATTN: MARK REBAGLIATI

Sample description	Prep code	Zn ppm						
L10+00E 13+00N	214	56	--	--	--	--	--	--
L10+00E 14+00N	214	40	--	--	--	--	--	--
L10+00E 15+00N	214	112	--	--	--	--	--	--
L10+00E 16+00N	214	73	--	--	--	--	--	--
L10+00E 17+00N	214	58	--	--	--	--	--	--
L10+00E 18+00N	214	64	--	--	--	--	--	--
L10+00E 19+00N	214	53	--	--	--	--	--	--
L10+00E 20+00N	214	38	--	--	--	--	--	--
L10+00E 21+00N	214	41	--	--	--	--	--	--
L10+00E 22+00N	214	37	--	--	--	--	--	--
L10+00E 24+00N	214	59	--	--	--	--	--	--
L10+00E 25+00N	214	47	--	--	--	--	--	--
L10+00E 26+00N	214	63	--	--	--	--	--	--
L10+00E 27+00N	214	45	--	--	--	--	--	--
L10+00E 28+00N	214	60	--	--	--	--	--	--
L10+00E 29+00N	214	73	--	--	--	--	--	--
L10+00E 30+00N	214	45	--	--	--	--	--	--
BL10+00N 11+00E	214	58	--	--	--	--	--	--
BL10+00N 12+00E	214	74	--	--	--	--	--	--
BL10+00N 13+00E	214	86	--	--	--	--	--	--
BL10+00N 14+00E	214	121	--	--	--	--	--	--
BL10+00N 17+00E	214	70	--	--	--	--	--	--
BL10+00N 18+00E	214	59	--	--	--	--	--	--
BL10+00N 19+00E	214	72	--	--	--	--	--	--
BL10+00N 20+00E	214	91	--	--	--	--	--	--
BL10+00N 21+00E	214	38	--	--	--	--	--	--
BL10+00N 22+00E	214	64	--	--	--	--	--	--
BL10+00N 23+00E	214	79	--	--	--	--	--	--
BL10+00N 25+00E	214	30	--	--	--	--	--	--
BL10+00N 26+00E	214	53	--	--	--	--	--	--
BL10+00N 27+00E	214	70	--	--	--	--	--	--
BL10+00N 28+00E	214	22	--	--	--	--	--	--
BL10+00N 30+00E	214	62	--	--	--	--	--	--
BL10+00N 31+00E	214	72	--	--	--	--	--	--
BL10+00N 32+00E	214	61	--	--	--	--	--	--
BL10+00N 33+00E	214	37	--	--	--	--	--	--
BL10+00N 34+00E	214	70	--	--	--	--	--	--
L12+00E 13+00N	214	52	--	--	--	--	--	--
L12+00E 14+00N	214	72	--	--	--	--	--	--
L12+00E 15+00E	214	66	--	--	--	--	--	--

Certified by *Hart Buchler*





CHEMEX LABS LTD.

212 BROOKSBANK AVE.
NORTH VANCOUVER, B.C.
CANADA V7J 2C1

• ANALYTICAL CHEMISTS

• GEOCHEMISTS

• REGISTERED ASSAYERS

TELEPHONE: (604) 984-0221

TELEX: 043-52597

CERTIFICATE OF ANALYSIS

TO : SELCO MINING CORPORATION LTD.,

STE. 402-535 THURLOW STREET
VANCOUVER, B.C.
V6E 3L2

CERT. # : A8313850-002-A
INVOICE # : I8313850
DATE : 18-AUG-83
P.O. # : NONE
PHIL 1

AUG 18 1983

ATTN: MARK REBAGLIATI

Sample description	Prep code	Zn ppm					
L12+00E 16+00N	214	48	--	--	--	--	--
L12+00E 18+00N	214	45	--	--	--	--	--
L12+00E 19+00N	214	34	--	--	--	--	--
L12+00E 20+00N	214	54	--	--	--	--	--
L12+00E 21+00N	214	54	--	--	--	--	--
L12+00E 22+00N	214	41	--	--	--	--	--
L12+00E 23+00N	214	46	--	--	--	--	--
L12+00E 24+00N	214	67	--	--	--	--	--
L12+00E 25+00N	214	35	--	--	--	--	--
L12+00E 26+00N	214	38	--	--	--	--	--
L12+00E 27+00N	214	44	--	--	--	--	--
L12+00E 28+00N	214	40	--	--	--	--	--
L12+00E 30+00N	214	116	--	--	--	--	--
L14+00E 11+00N	214	65	--	--	--	--	--
L14+00E 14+00N	214	62	--	--	--	--	--
L14+00E 17+00N	214	65	--	--	--	--	--
L14+00E 18+00N	214	38	--	--	--	--	--
L14+00E 19+00N	214	76	--	--	--	--	--
L14+00E 20+00N	214	64	--	--	--	--	--
L14+00E 21+00N	214	44	--	--	--	--	--
L14+00E 22+00N	214	43	--	--	--	--	--
L14+00E 23+00N	214	46	--	--	--	--	--
L14+00E 24+00N	214	41	--	--	--	--	--
L14+00E 25+00N	214	49	--	--	--	--	--
L14+00E 26+00N	214	57	--	--	--	--	--
L14+00E 27+00N	214	38	--	--	--	--	--
L14+00E 28+00N	214	27	--	--	--	--	--
L14+00E 29+00N	214	55	--	--	--	--	--
L14+00E 30+00N	214	62	--	--	--	--	--
T/L 11+00	214	80	--	--	--	--	--
T/L15+00N 13+00E	214	74	--	--	--	--	--
T/L15+00N 14+00E	214	44	--	--	--	--	--
T/L15+00N 15+00E	214	54	--	--	--	--	--
T/L15+00N 16+00E	214	52	--	--	--	--	--
T/L15+00N 17+00E	214	48	--	--	--	--	--
T/L15+00N 18+00E	214	50	--	--	--	--	--
T/L15+00N 19+00E	214	68	--	--	--	--	--
L16+00E 11+00N	214	73	--	--	--	--	--
L16+00E 12+00N	214	41	--	--	--	--	--
L16+00E 14+00N	214	53	--	--	--	--	--



Certified by *Hart/Sichler*



CHEMEX LABS LTD.

212 BROOKSBANK AVE.
NORTH VANCOUVER, B.C.
CANADA V7J 2C1
TELEPHONE: (604) 984-0221
TELEX: 043-52597

• ANALYTICAL CHEMISTS • GEOCHEMISTS • REGISTERED ASSAYERS

CERTIFICATE OF ANALYSIS

TO : SELCO MINING CORPORATION LTD.,

STE. 402-535 THURLOW STREET
VANCOUVER, B.C.
V6E 3L2

CERT. # : A8313850-003-A
INVOICE # : I8313850
DATE : 18-AUG-83
P.O. # : NONE
PHIL 1

AUG 18 1983

ATTN: MARK REBAGLIATI

Sample description	Prep code	Zn ppm						
L16+00E 16+00N	214	41	--	--	--	--	--	--
L16+00E 17+00N	214	44	--	--	--	--	--	--
L16+00E 18+00N	214	46	--	--	--	--	--	--
L16+00E 19+00N	214	29	--	--	--	--	--	--
L16+00E 20+00N	214	45	--	--	--	--	--	--
L16+00E 21+00N	214	64	--	--	--	--	--	--
L16+00E 22+00N	214	41	--	--	--	--	--	--
L16+00E 23+00N	214	54	--	--	--	--	--	--
L16+00E 24+00N	214	45	--	--	--	--	--	--
L16+00E 25+00N	214	61	--	--	--	--	--	--
L16+00E 27+00N	214	55	--	--	--	--	--	--
L16+00E 28+00N	214	46	--	--	--	--	--	--
L16+00E 29+00N	214	50	--	--	--	--	--	--
L16+00E 30+00N	214	57	--	--	--	--	--	--
L18+00E 11+00N	214	75	--	--	--	--	--	--
L18+00E 12+00N	214	110	--	--	--	--	--	--
L18+00E 13+00N	214	40	--	--	--	--	--	--
L18+00E 14+00N	214	67	--	--	--	--	--	--
L18+00E 16+00N	214	80	--	--	--	--	--	--
L18+00E 17+00N	214	39	--	--	--	--	--	--
L18+00E 18+00N	214	48	--	--	--	--	--	--
L18+00E 19+00N	214	43	--	--	--	--	--	--
L18+00E 20+00N	214	55	--	--	--	--	--	--
L18+00E 21+00N	214	68	--	--	--	--	--	--
L18+00E 22+00N	214	35	--	--	--	--	--	--
L18+00E 23+00N	214	44	--	--	--	--	--	--
L18+00E 24+00N	214	57	--	--	--	--	--	--
L18+00E 25+00N	214	52	--	--	--	--	--	--
L18+00E 26+00N	214	48	--	--	--	--	--	--
L18+00E 27+00N	214	35	--	--	--	--	--	--
L18+00E 28+00N	214	56	--	--	--	--	--	--
L18+00E 29+00N	214	34	--	--	--	--	--	--
L18+00E 30+00N	214	39	--	--	--	--	--	--
L20+00E 11+00N	214	10	--	--	--	--	--	--
L20+00E 14+00N	214	46	--	--	--	--	--	--
L20+00E 15+00N	214	78	--	--	--	--	--	--
L20+00E 16+00N	214	76	--	--	--	--	--	--
L20+00E 17+00N	214	35	--	--	--	--	--	--
L20+00E 19+00N	214	42	--	--	--	--	--	--
L20+00E 20+00N	214	39	--	--	--	--	--	--



Certified by *Haut Bichler*



CHEMEX LABS LTD.

212 BROOKSBANK AVE.
NORTH VANCOUVER, B.C.
CANADA V7J 2C1

TELEPHONE: (604) 984-0221
TELEX: 043-52597

• ANALYTICAL CHEMISTS

• GEOCHEMISTS

• REGISTERED ASSAYERS

CERTIFICATE OF ANALYSIS

TO : SELCO MINING CORPORATION LTD.,

STE. 402-535 THURLOW STREET
VANCOUVER, B.C.
V6E 3L2

CERT. # : A8313850-004-A
INVOICE # : 18313850
DATE : 18-AUG-83
P.O. # : NONE
PHIL 1

AUG 18 1983

ATTN: MARK REBAGLIATI

Sample description	Prep code	Zn ppm						
L20+00E 21+00N	214	53	--	--	--	--	--	--
L20+00E 22+00N	214	57	--	--	--	--	--	--
L20+00E 23+00N	214	52	--	--	--	--	--	--
L20+00E 24+00N	214	31	--	--	--	--	--	--
L20+00E 25+00N	214	42	--	--	--	--	--	--
L20+00E 26+00N	214	60	--	--	--	--	--	--
L20+00E 27+00N	214	51	--	--	--	--	--	--
L20+00E 28+00N	214	51	--	--	--	--	--	--
L20+00E 29+00N	214	62	--	--	--	--	--	--
L20+00E 30+00N	214	50	--	--	--	--	--	--
L22+00E 11+00N	214	64	--	--	--	--	--	--
L22+00E 12+00N	214	48	--	--	--	--	--	--
L22+00E 13+00N	214	58	--	--	--	--	--	--
L22+00E 14+00N	214	44	--	--	--	--	--	--
L22+00E 16+00N	214	61	--	--	--	--	--	--
L22+00E 17+00N	214	87	--	--	--	--	--	--
L22+00E 18+00N	214	53	--	--	--	--	--	--
L22+00E 19+00N	214	65	--	--	--	--	--	--
L22+00E 20+00N	214	50	--	--	--	--	--	--
L22+00E 21+00N	214	65	--	--	--	--	--	--
L22+00E 22+00N	214	48	--	--	--	--	--	--
L22+00E 23+00N	214	75	--	--	--	--	--	--
L22+00E 24+00N	214	50	--	--	--	--	--	--
L22+00E 25+00N	214	67	--	--	--	--	--	--
L22+00E 26+00N	214	60	--	--	--	--	--	--
L22+00E 27+00N	214	49	--	--	--	--	--	--
L22+00E 29+00N	214	52	--	--	--	--	--	--
L22+00E 30+00N	214	40	--	--	--	--	--	--
L24+00E 14+00N	214	57	--	--	--	--	--	--
L24+00E 17+00N	214	62	--	--	--	--	--	--
L24+00E 18+00N	214	83	--	--	--	--	--	--
L24+00E 19+00N	214	81	--	--	--	--	--	--
L24+00E 20+00N	214	39	--	--	--	--	--	--
L24+00E 21+00N	214	48	--	--	--	--	--	--
L24+00E 22+00N	214	62	--	--	--	--	--	--
L24+00E 23+00N	214	50	--	--	--	--	--	--
L24+00E 24+00N	214	28	--	--	--	--	--	--
L24+00E 25+00N	214	55	--	--	--	--	--	--
L24+00E 26+00N	214	49	--	--	--	--	--	--
L24+00E 27+00N	214	54	--	--	--	--	--	--

Certified by *Hart Bichler*





CHEMEX LABS LTD.

212 BROOKSBANK AVE.
NORTH VANCOUVER, B.C.
CANADA V7J 2C1

TELEPHONE: (604) 984-0221
TELEX: 043-52597

• ANALYTICAL CHEMISTS • GEOCHEMISTS • REGISTERED ASSAYERS

CERTIFICATE OF ANALYSIS

TO : SELCO MINING CORPORATION LTD.,

STE. 402-535 THURLOW STREET
VANCOUVER, B.C.
V6E 3L2

CERT. # : A8313850-005-A
INVOICE # : 18313850
DATE : 18-AUG-83
P.O. # : NONE
PHIL 1

ATTN: MARK REBAGLIATI

AUG 18 1983

Sample description	Prep code	Zn ppm					
L24+00E 28+00N	214	62	--	--	--	--	--
L24+00E 29+00N	214	68	--	--	--	--	--
L24+00E 30+00N	214	48	--	--	--	--	--
L26+00E 11+00N	214	65	--	--	--	--	--
L26+00E 12+00N	214	80	--	--	--	--	--
L26+00E 14+00N	214	40	--	--	--	--	--
L26+00E 15+00N	214	39	--	--	--	--	--
L26+00E 16+00N	214	68	--	--	--	--	--
L26+00E 17+00N	214	74	--	--	--	--	--
L26+00E 18+00N	214	65	--	--	--	--	--
L26+00E 19+00N	214	92	--	--	--	--	--
L26+00E 20+00N	214	48	--	--	--	--	--
L26+00E 21+00N	214	45	--	--	--	--	--
L26+00E 22+00N	214	62	--	--	--	--	--
L26+00E 23+00N	214	69	--	--	--	--	--
L26+00E 24+00N	214	56	--	--	--	--	--
L26+00E 25+00N	214	57	--	--	--	--	--
L26+00E 26+00N	214	29	--	--	--	--	--
L26+00E 27+00N	214	62	--	--	--	--	--
L26+00E 28+00N	214	66	--	--	--	--	--
L26+00E 29+00N	214	48	--	--	--	--	--
L26+00E 30+00N	214	52	--	--	--	--	--
L28+00E 11+00N	214	31	--	--	--	--	--
L28+00E 12+00N	214	66	--	--	--	--	--
L28+00E 13+00N	214	67	--	--	--	--	--
L28+00E 14+00N	214	27	--	--	--	--	--
L28+00E 15+00N	214	50	--	--	--	--	--
L28+00E 16+00N	214	52	--	--	--	--	--
L28+00E 17+00N	214	50	--	--	--	--	--
L28+00E 18+00N	214	50	--	--	--	--	--
L28+00E 19+00N	214	95	--	--	--	--	--
L28+00E 20+00N	214	92	--	--	--	--	--
L28+00E 21+00N	214	60	--	--	--	--	--
L28+00E 22+00N	214	51	--	--	--	--	--
L28+00E 23+00N	214	42	--	--	--	--	--
L28+00E 24+00N	214	36	--	--	--	--	--
L28+00E 25+00N	214	35	--	--	--	--	--
L28+00E 26+00N	214	40	--	--	--	--	--
L28+00E 27+00N	214	39	--	--	--	--	--
L28+00E 28+00N	214	17	--	--	--	--	--



Certified by *Stuart Boshler*



CHEMEX LABS LTD.

212 BROOKSBANK AVE.
NORTH VANCOUVER, B.C.
CANADA V7J 2C1

TELEPHONE: (604) 984-0221
TELEX: 043-52597

• ANALYTICAL CHEMISTS • GEOCHEMISTS • REGISTERED ASSAYERS

CERTIFICATE OF ANALYSIS

TO : SELCO MINING CORPORATION LTD.,

STE. 402-535 THURLCOW STREET
VANCOUVER, B.C.
V6E 3L2

CERT. # : A8313850-006-A
INVOICE # : 18313850
DATE : 18-AUG-83
P.C. # : NONE
PHIL 1

AUG 18 1983

ATTN: MARK REBAGLIATI

Sample description	Prep code	Zn ppm					
L28+00E 29+00N	214	47	--	--	--	--	--
L28+00E 30+00N	214	45	--	--	--	--	--
L30+00E 11+00N	214	65	--	--	--	--	--
L30+00E 12+00N	214	74	--	--	--	--	--
L30+00E 13+00N	214	73	--	--	--	--	--
L30+00E 15+00N	214	47	--	--	--	--	--
L30+00E 16+00N	214	70	--	--	--	--	--
L30+00E 17+00N	214	34	--	--	--	--	--
L30+00E 18+00N	214	61	--	--	--	--	--
L30+00E 19+00N	214	81	--	--	--	--	--
L30+00E 22+00N	214	37	--	--	--	--	--
L30+00E 25+00N	214	166	--	--	--	--	--
L30+00E 26+00N	214	78	--	--	--	--	--
L30+00E 27+00N	214	55	--	--	--	--	--
L30+00E 28+00N	214	51	--	--	--	--	--
L30+00E 29+00N	214	41	--	--	--	--	--
L30+00E 30+00N	214	42	--	--	--	--	--
L32+00E 11+00N	214	37	--	--	--	--	--
L32+00E 12+00N	214	75	--	--	--	--	--
L32+00E 14+00N	214	30	--	--	--	--	--
L32+00E 15+00N	214	17	--	--	--	--	--
L32+00E 16+00N	214	66	--	--	--	--	--
L32+00E 17+00N	214	60	--	--	--	--	--
L32+00E 18+00N	214	56	--	--	--	--	--
L32+00E 19+00N	214	35	--	--	--	--	--
L32+00E 20+00N	214	44	--	--	--	--	--
L32+00E 21+00N	214	58	--	--	--	--	--
L32+00E 22+00N	214	55	--	--	--	--	--
L32+00E 23+00N	214	38	--	--	--	--	--
L32+00E 24+00N	214	32	--	--	--	--	--
L32+00E 25+00N	214	73	--	--	--	--	--
L32+00E 26+00N	214	49	--	--	--	--	--
L32+00E 27+00N	214	87	--	--	--	--	--
L32+00E 28+00N	214	46	--	--	--	--	--
L32+00E 29+00N	214	59	--	--	--	--	--
L32+00E 30+00N	214	44	--	--	--	--	--
L34+00E 11+00N	214	49	--	--	--	--	--
L34+00E 12+00N	214	51	--	--	--	--	--
L34+00E 13+00N	214	46	--	--	--	--	--
L34+00E 14+00N	214	39	--	--	--	--	--



Certified by *Hart Buchler*



CHEMEX LABS LTD.

212 BROOKSBANK AVE.
NORTH VANCOUVER, B.C.
CANADA V7J 2C1
TELEPHONE: (604) 984-0221
TELEX: 043-52597

• ANALYTICAL CHEMISTS • GEOCHEMISTS • REGISTERED ASSAYERS

CERTIFICATE OF ANALYSTS

TO : SELCO MINING CORPORATION LTD.,

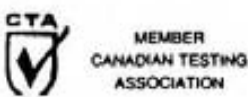
STE. 402-535 THURLOW STREET
VANCOUVER, B.C.
V6E 3L2

CERT. # : A8313850-007-A
INVOICE # : I8313850
DATE : 18-AUG-83
P.C. # : NONE
PHIL 1

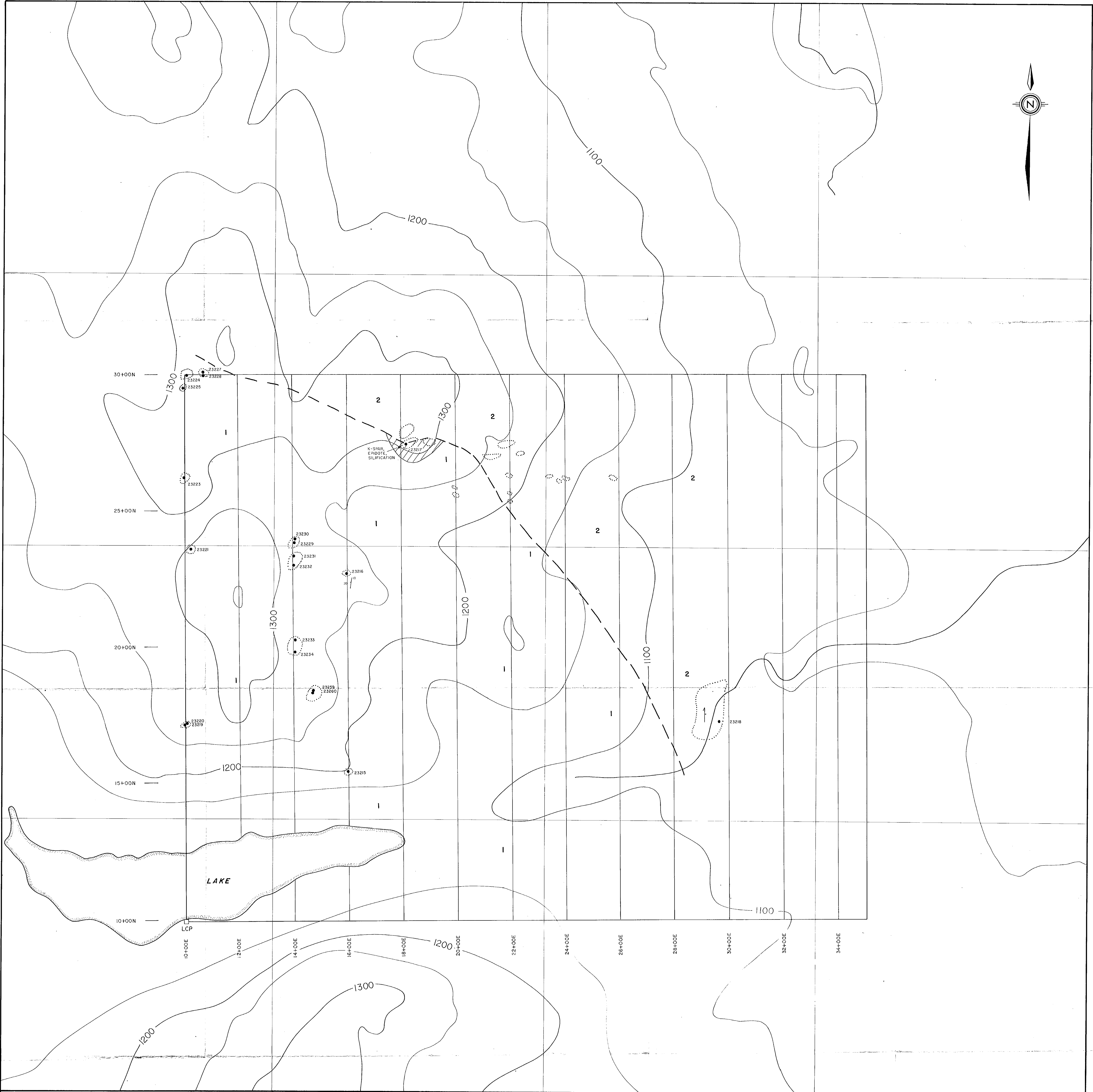
AUG 18 1983

ATTN: MARK REBAGLIATI

Sample description	Prep code	Zn ppm						
L34+00E 15+00N	214	47	--	--	--	--	--	--
L34+00E 16+00N	214	32	--	--	--	--	--	--
L34+00E 19+00N	214	58	--	--	--	--	--	--
L34+00E 20+00N	214	36	--	--	--	--	--	--
L34+00E 21+00N	214	54	--	--	--	--	--	--
L34+00E 22+00N	214	55	--	--	--	--	--	--
L34+00E 23+00N	214	50	--	--	--	--	--	--
L34+00E 25+00N	214	40	--	--	--	--	--	--
L34+00E 27+00N	214	46	--	--	--	--	--	--
L34+00E 28+00N	214	69	--	--	--	--	--	--



Certified by *Hart Bichler*



LEGEND

- 2 HORNBLENDE DIORITE
 - HORNBLLENDE MONZONITE
 - TAKLA GROUP
 - 1 AUGITE PORPHYRY ANDESITE
- KEY**
- GEOLOGICAL CONTACT
 - - - BEDDING, INCLINED
 - - - FOLIATION, INCLINED
 - OUTCROP
 - ROCK CHIP SAMPLE
 - ▨ ALTERATION
K-SPAR, EPIDOTE,
SILIFICATION

**GEOLOGICAL BRANCH
ASSESSMENT REPORT**

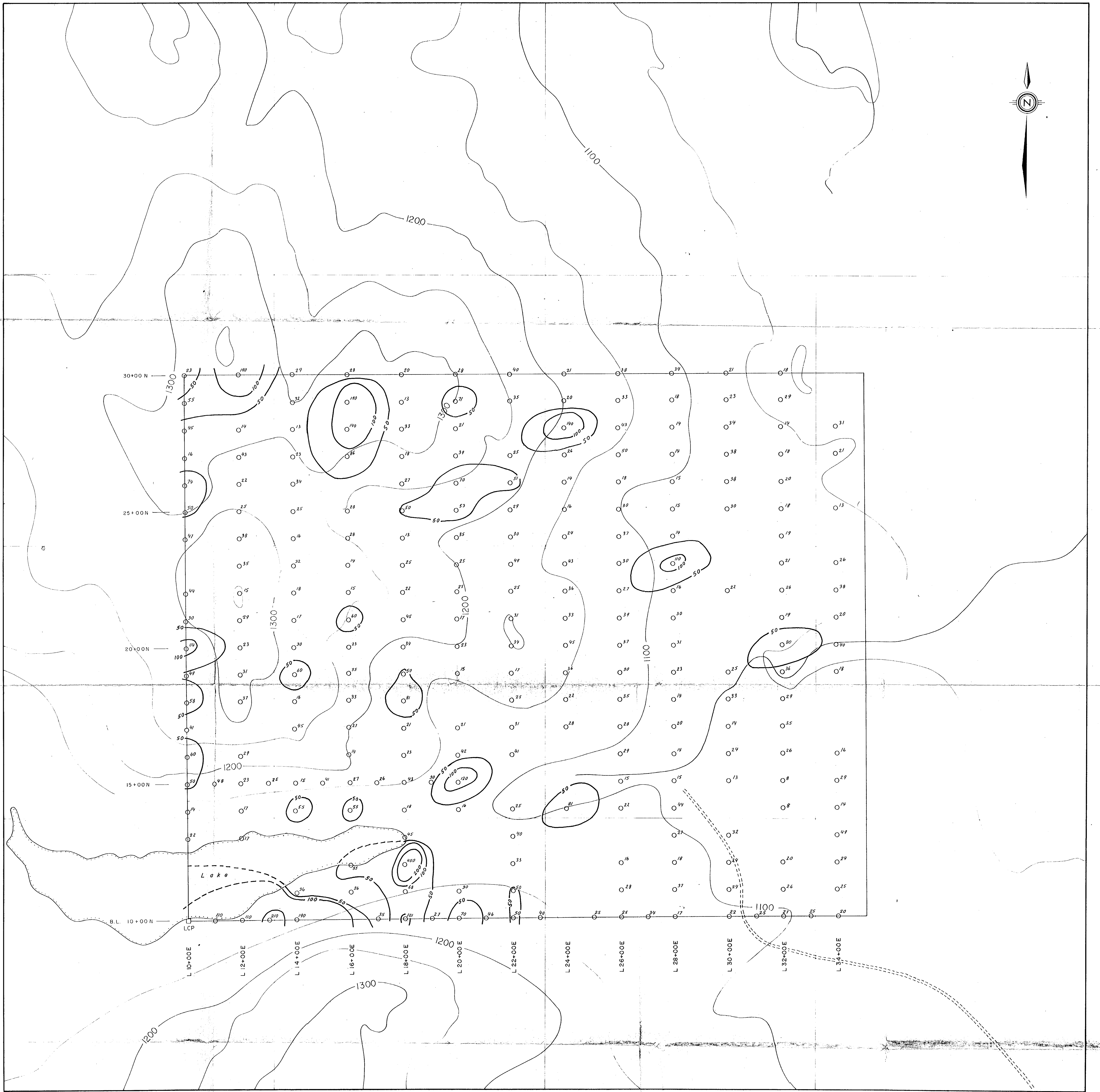
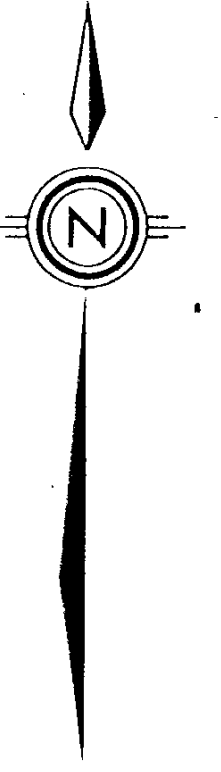
11,951

SELCO INC. EXPLORATION
WESTERN CANADA

**PHIL I CLAIM
TAKLA PROJECT
GEOLOGY**

DRAWN BY	DATE	N.T.S.	PLAN
TRACED BY	DATE	93 N/I	
MLR	APRIL / 1983		

Scale 1:5000



GEOLOGICAL BRANCH
ASSESSMENT REPORT

11,951

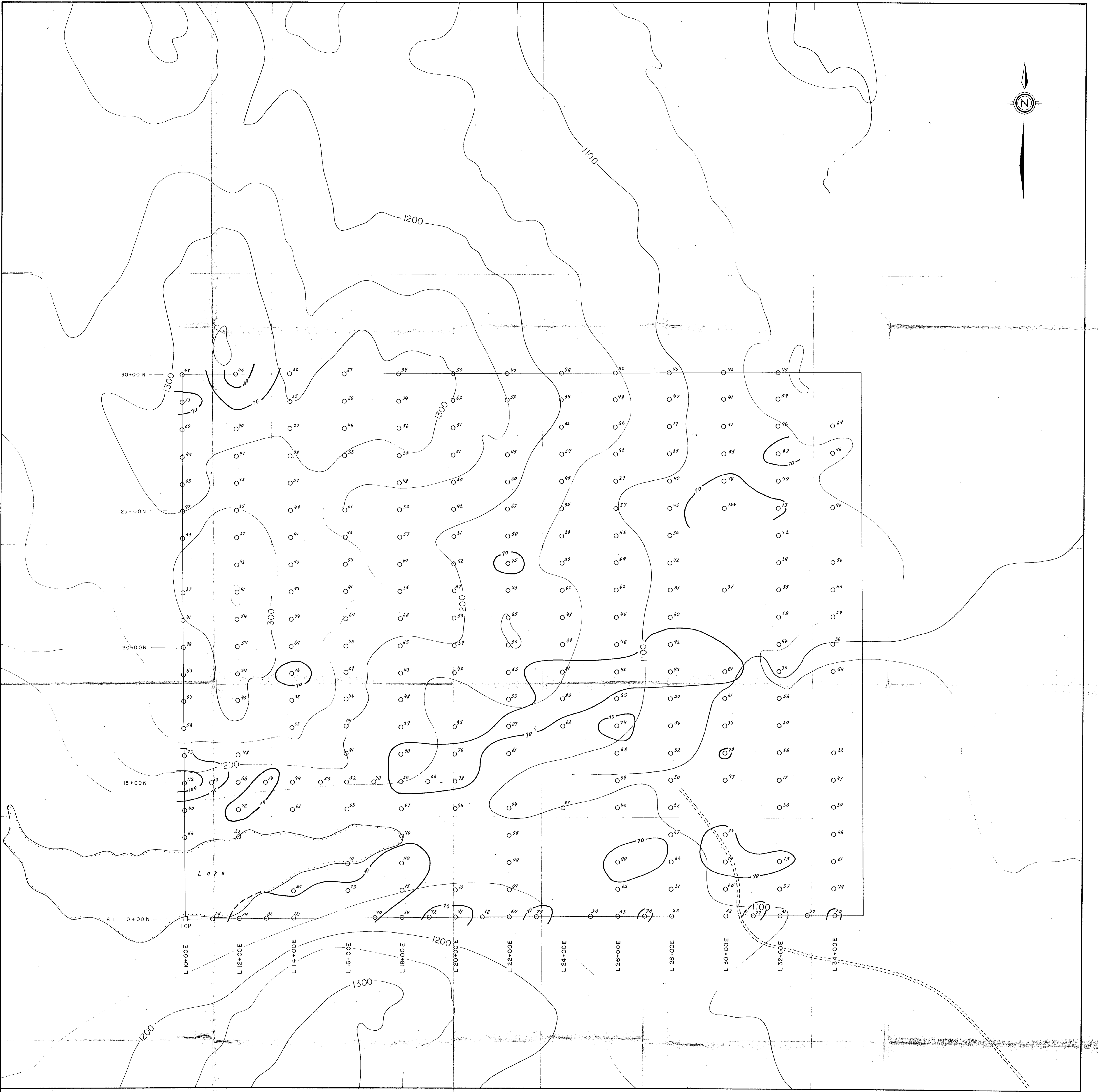
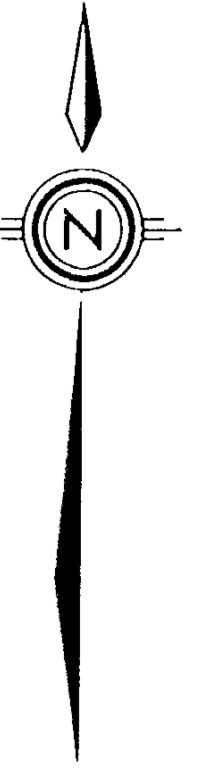
SELCO INC. EXPLORATION
WESTERN CANADA

TAKLA PROJECT
PHIL I CLAIM

SOIL GEOCHEMISTRY
COPPER PPM

Scale 1:5000
0 100 200 300 400 500 metres

DRAWN BY	DATE	N.T.S.	PLAN
TESTED BY	DATE	93N	
MLR, J.S.	1983		22



GEOLOGICAL BRANCH
ASSESSMENT REPORT

11,951

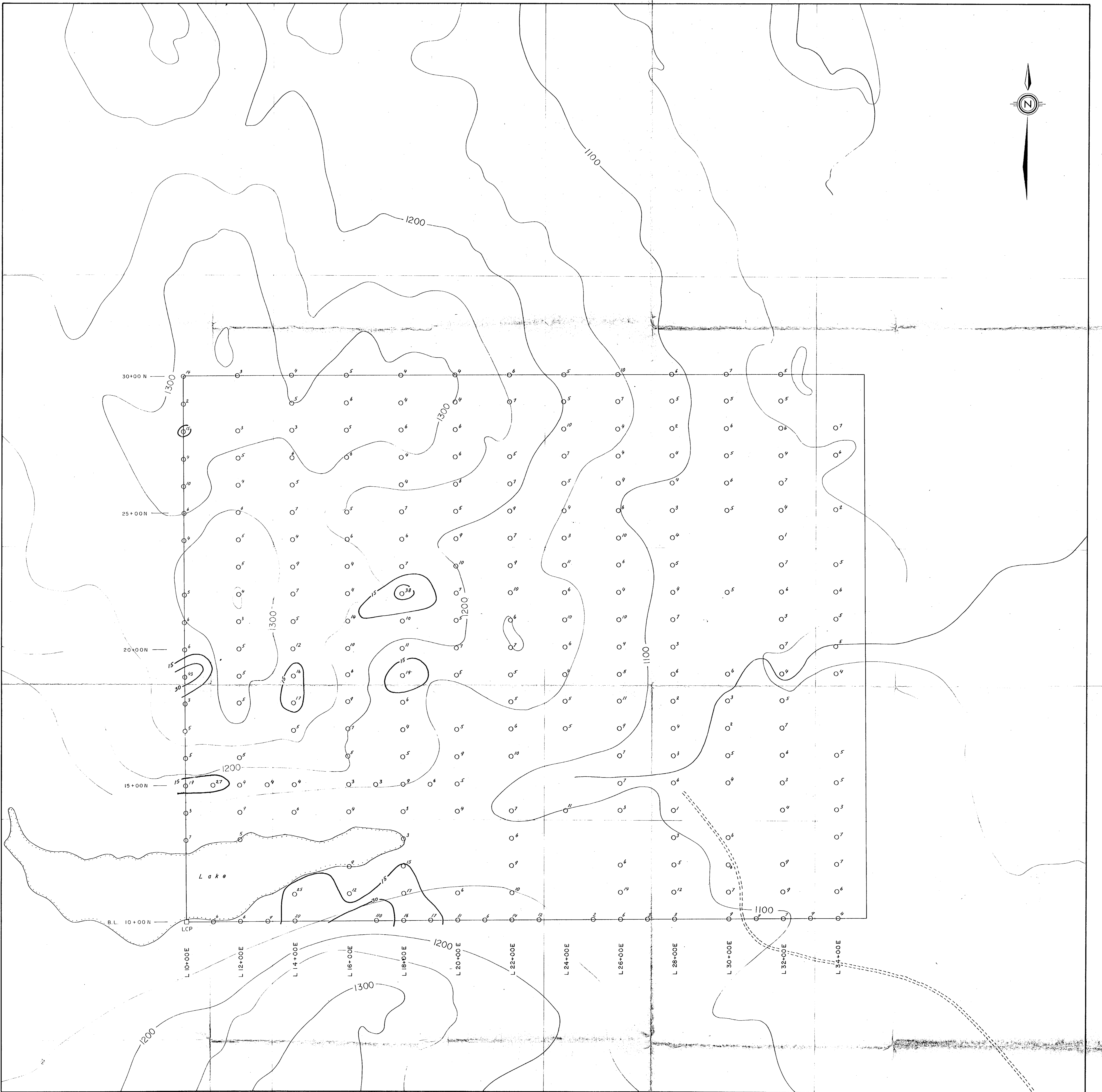
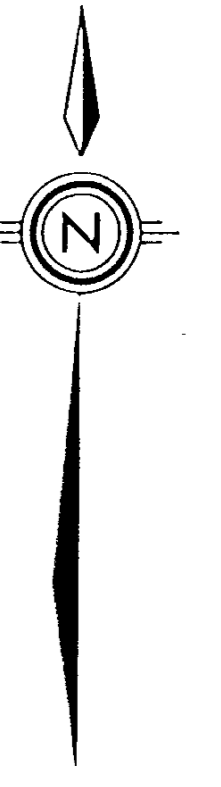
SELCO INC. EXPLORATION
WESTERN CANADA

TAKLA PROJECT
PHIL I CLAIM

SOIL GEOCHEMISTRY
ZINC PPM


0 100 200 300 400 500 meters
Scale 1:5000

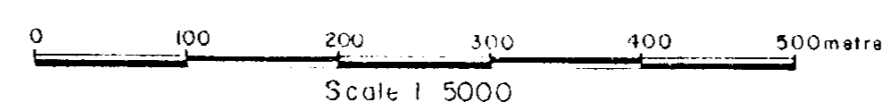
DRAWN BY	DATE	N.T.S.	PLAN
MLR, J.S.	1983	93 N	23

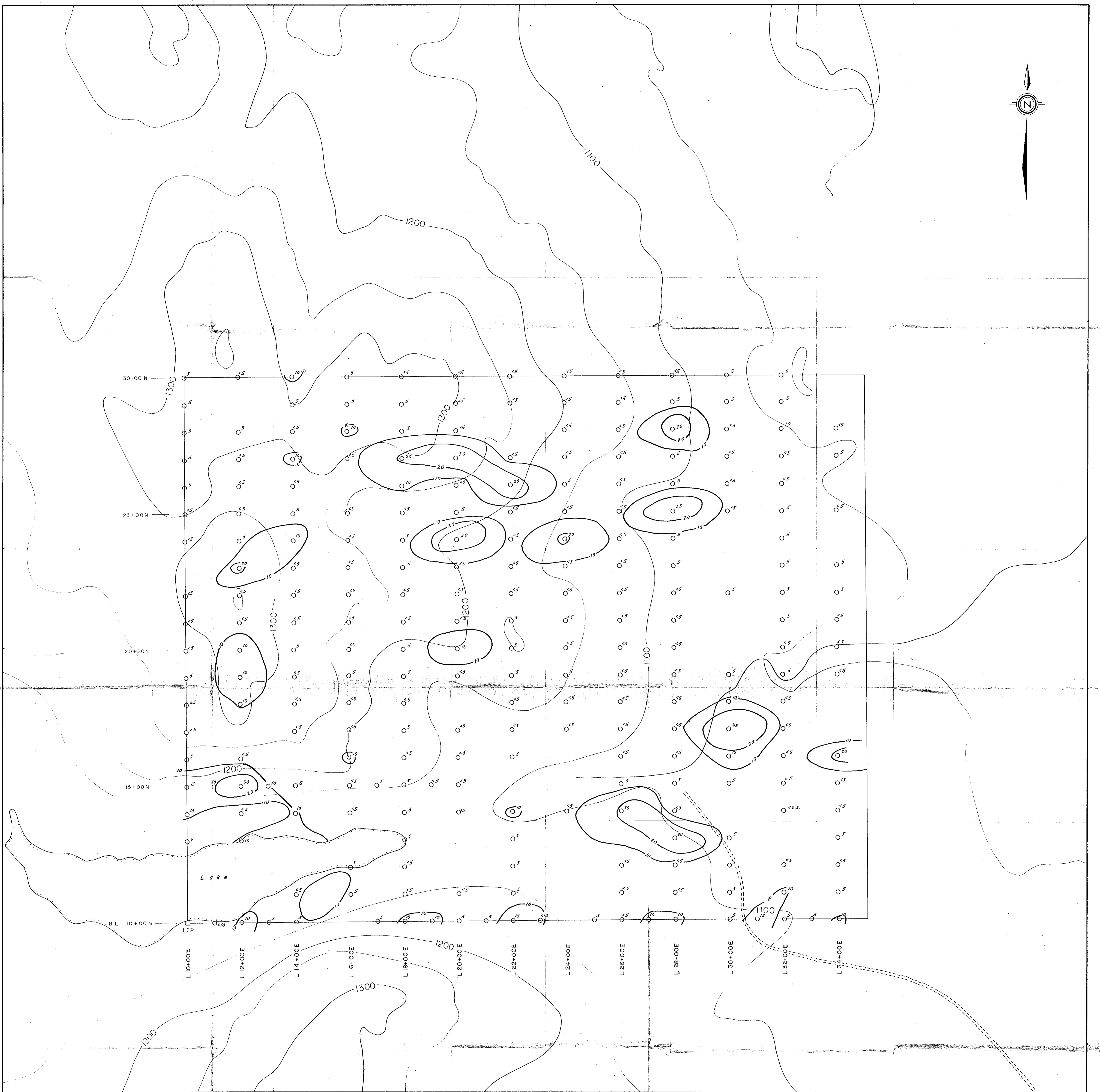


GEOLOGICAL BRANCH
ASSESSMENT REPORT

11,951

 SELCO INC.		EXPLORATION WESTERN CANADA	
TAKLA PROJECT PHIL I CLAIM SOIL GEOCHEMISTRY ARSENIC PPM			
DRAWN BY	DATE	N.F.S.	PLAN
MLR, J.S.	1983	93 N	24





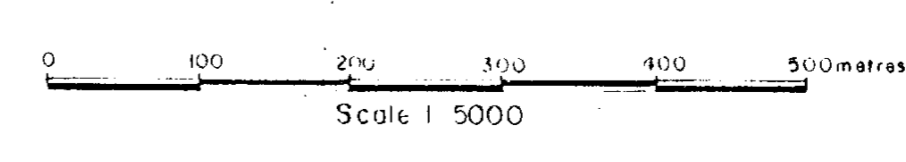
GEOLOGICAL BRANCH
ASSESSMENT REPORT

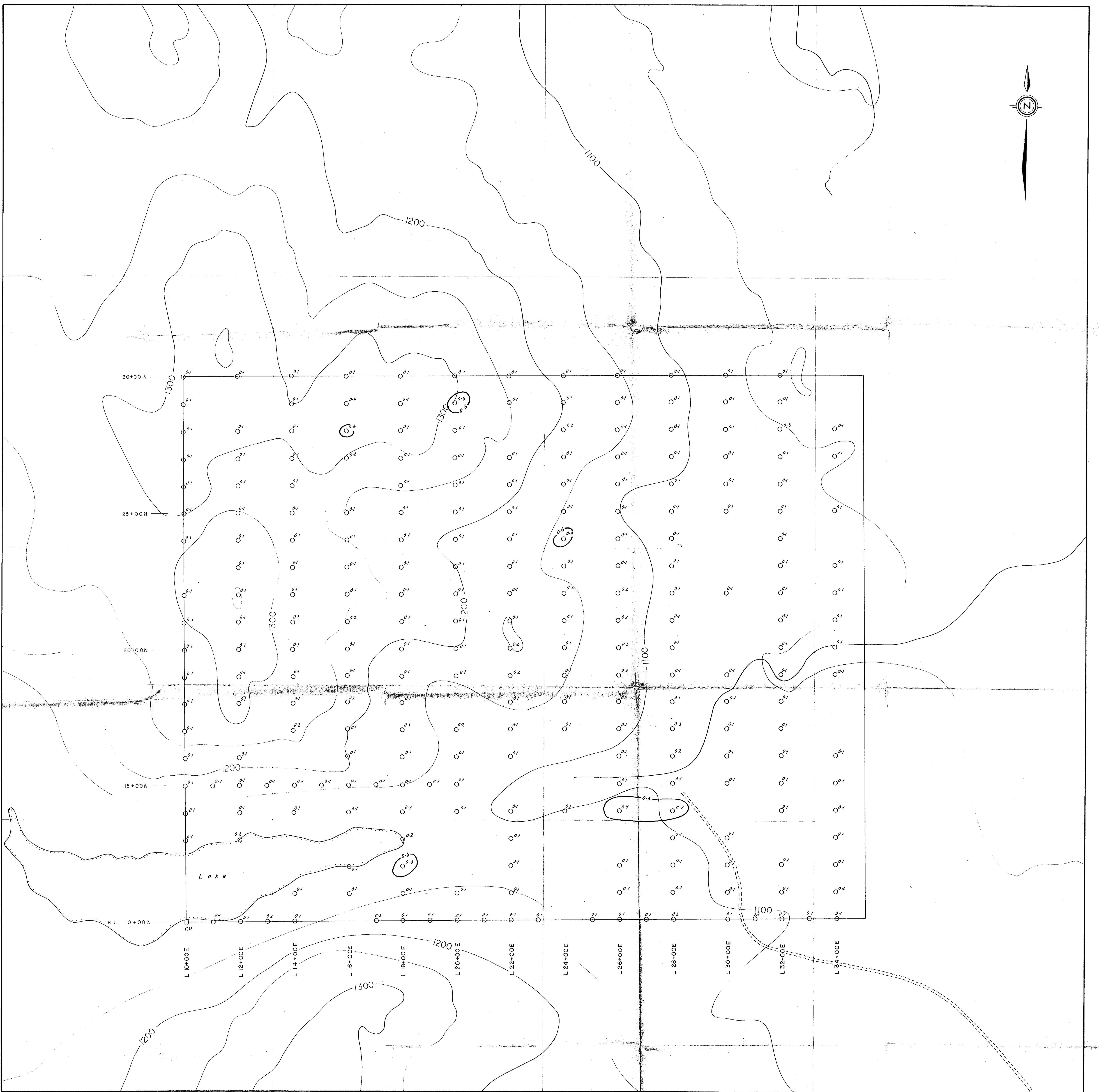
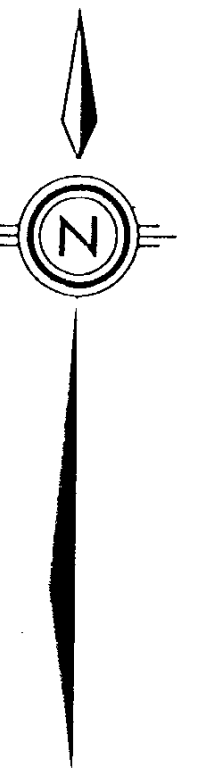
11,951

SELCO INC. EXPLORATION
WESTERN CANADA

TAKLA PROJECT
PHIL I CLAIM
SOIL GEOCHEMISTRY
GOLD PPB

DRAWN BY	DATE	N.T.S.	PLAN
MLR, J.S.	1983	93N	25





GEOLOGICAL BRANCH
ASSESSMENT REPORT

11,951

SELCO INC. EXPLORATION
WESTERN CANADA

TAKLA PROJECT
PHIL I CLAIM

SOIL GEOCHEMISTRY
SILVER PPM

DRAWN BY	DATE	N.T.S.	PLAN
MLR, J.S.	1983	93N	26