

**Noramex Minerals Inc./Waybo Resources Inc. Joint Venture**

**Geochemical and Geophysical Report  
on the Connor Gold Property**

**Nelson Mining Division, B.C.**

<b>Hungary Man</b>	<b>L4083</b>
<b>Connor</b>	<b>1100(6)</b>
<b>Jo-Anne 1</b>	<b>3283(7)</b>
<b>Sheila</b>	<b>3527(9)</b>
<b>Katy-1</b>	<b>3525(9)</b>
<b>Katy-2</b>	<b>3526(9)</b>

<b>NTS Reference</b>	<b>82F/6W and 82F/5E</b>
<b>Longitude</b>	<b>117° 17'W</b>
<b>Latitude</b>	<b>49° 24'N</b>

**Operator: Noramex Minerals Inc.**

**Consultant: Nevin Sadlier-Brown Goodbrand Ltd.**

**Prepared by: John F. Reader, P.Eng.  
Dwayne L. Melrose, Geologist**

**Dates of Work: August 17 - September 25, 1983**

**Date of Report: February 29, 1984**

**GEOLOGICAL BRANCH  
ASSESSMENT REPORT**

**12,082**

**GEOLOGISTS AND ENGINEERS**

TABLE OF CONTENTS

	<u>Page</u>
1. INTRODUCTION	1
1.1 Terms of Reference	1
1.2 Claims and Ownership	1
1.3 Location and Access	2
1.4 Physiography and Vegetation	2
1.5 Previous Work	2
1.6 Summary of Work	2
2. GEOLOGY	3
2.1 Regional Geology	3
2.2 Property Geology	4
3. SOIL GEOCHEMISTRY	6
3.1 Sampling and Analytical Method	6
3.2 Discussion of Results	6
3.2.1 Gold Geochemistry	6
3.2.2 Arsenic Geochemistry	7
4. MAGNETOMETER SURVEY	7
4.1 Method	7
4.2 Discussion of Results	7
5. BIBLIOGRAPHY	9
FIGURES	Following Text
Figure 1 - General Location Map	
Figure 2 - Claim Map	
Figure 3 - Regional Geology Map	
Figure 4 - Property Geology & Grid Map	In Pocket
Figure 5 - Gold Geochemistry	In Pocket
Figure 6 - Arsenic Geochemistry	In Pocket
Figure 7 - Magnetometer Map	In Pocket

TABLE OF CONTENTS (cont'd)

	<u>Page</u>
<b>TABLES</b>	Following Text
Table 1 - Connor Gold Property Assay Results	
<b>APPENDIX</b>	Following Text
Appendix A - Statement of Qualifications	
Appendix B - Certificates of Analyses	
Appendix C - Itemized Cost Statement	
Appendix D - Magnetometer Specifications	

---

---

---

## 1. INTRODUCTION

### 1.1 Terms of Reference

Nevin Sadlier-Brown Goodbrand Ltd. was retained by Noramex Minerals Inc. as its technical consultants to carry out soil geochemical sampling and a ground magnetometer survey on the Connor Gold Property (Figure 1). Noramex Minerals Inc. is the operator of the Noramex/Waybo Joint Venture. The work was done in accordance with recommendations contained in a report by P.J. Santos, P.Eng., dated August, 1983.

The field work was performed between August 17 and September 25, 1983 by John F. Reader, P.Eng., Robert E. Swintz, Geologist, and John Contini, Grant Greer, Geoff Robertson and Ken Syrja, all field technicians.

### 1.2 Claims and Ownership (Figure 2)

The exploration and development of the Connor Gold property is being undertaken in a joint venture between Noramex Minerals Inc. and Waybo Resources Inc., each to 50% of the commitment. Noramex Minerals Inc. is the operator of the joint venture. Both companies have their offices in Vancouver, B.C.

The property consists of five modified grid claims, the Connor (6 units), Jo-Anne 1 (20 units), Sheila (18 units), Katy-1, Katy-2 (both 8 units) and the Hungary Man Reverted Crown Grant. The Connor claim and the Hungary Man Reverted Crown Grant are owned by Annie C. Metcalfe of Gibsons Landing, B.C. and are optioned to Waybo Resources Inc. The other modified grid claims are owned by Noramex Minerals Inc.

<u>Name</u>	<u>Record No.</u>	<u>Units</u>	<u>Date Recorded</u>	<u>Owner</u>
Hungary Man	L4083	11.82 hec.	?	A.C. Metcalfe
Connor	1100(6)	6	June 14, 1979	A.C. Metcalfe
Jo-Anne 1	3283(7)	18	July 4, 1983	Noramex
Katy-1	3525(9)	8	Sept 16, 1983	Noramex
Katy-2	3526(9)	8	Sept 16, 1983	Noramex
Sheila	3527(9)	18	Sept 16, 1983	Noramex

### 1.3 Location and Access

The Connor Gold Joint Venture property is located about 15 kilometres west-southwest of the city of Nelson in the Nelson Mining Division (Figure 1). The property straddles Connor Creek from near its headwaters to its confluence with Rover Creek. Staking in 1983 extended the property to include ground west to the Kootenay River and north to the mouth of Rover Creek.

Access to the Hungary Man Crown Grant is via a four-wheel drive road which leaves the Rover Creek forestry road and provides access to the main workings. Other points on the property are reached by foot.

### 1.4 Physiography and Vegetation

The Connor Gold property ranges in elevation from 450m to 1460m ASL in a steep-sided, valley and ridge fashion. The area is heavily wooded with mature evergreen and deciduous trees except in the catchment of Connor Creek where a forest fire has left a dense, mixed undergrowth.

### 1.5 Previous Work

A detailed history is available in Santos' 1983 report on this property. The primary recent work was performed by Cominco in 1979 and 1980 and consisted of a program of magnetic and electromagnetic geophysics over a limited grid straddling Connor Creek near the old Hungary Man workings. This information was used as the basis for a 7 drill hole program which met with little success. The work performed this year re-established and extended the Cominco grid to provide much greater coverage. Several new areas containing workings and soil and geophysical anomalies have been discovered.

### 1.6 Summary of Work

This report describes work performed between August 17 and September 25, 1983 on the Connor Gold property. A control grid totalling approximately 15 kilometres was installed using discarded thread and compass (Baseline BRG 350°) with 3.75 kilometres surveyed in on the Jo-Anne-1 claim and the remainder on the Hungary Man and Connor claims. Stations were established at slope corrected, 25m intervals.

This grid was the basis for a program of exploration which included soil sampling, rock sampling, a total field magnetometer survey and limited reconnaissance geological mapping. The grid is reasonably well located on government topographic maps and overlaps an older grid established by Cominco in 1979 (Cominco Assessment Report #7901).

## 2. GEOLOGY

### 2.1 Regional Geology (Figure 3)

The regional geology of the property area has been summarized by Santos (1983).

"The area between Nelson and Castlegar is underlain by a volcano-sedimentary sequence on the eastern flank of the eugeosyncline bordering The Kootenay Arc.

This rock sequence consists of early Mesozoic to late Jurassic rock units comprising The Elise (Rossland) Formation, The Hall Formation, The Ymir Formation, and The Nelson Plutonic Rocks (Mulligan, 1979; Little, 1960).

The Elise (Rossland) Formation consists of greenstones made up of serpentized andesitic flows underlying sediments of The Hall Formation. This information also consists of andesite and basalt porphyry, breccias, agglomerate, and minor tuff (Mulligan). A series of dark green porphyry flows, breccia, agglomerate, and pyroclastics originally called Beaver Mountain are now considered part of the Rossland (Elise) Formation (Little).

Overlying The Elise (Rossland) Formation is a sequence of siltstone, argillite, slates, phyllite, greywacke and conglomerate (Mulligan) called the Hall Formation. Some thin-bedded limestone, usually dolomitized or skarned occur within this formation. H.W. Little (GSC Memoir 308) calls this sequence Unit B.

Various phases of The Nelson Plutonic Rocks intrude all of the above rock formations. The

composition of The Nelson Intrusive is variable ranging from granite, syenite, granodiorite and diorite. In the proximity of the intruded rocks, the chilled borders of the intrusive grade into porphyritic andesite within a limited area. Included in The Nelson Formation are lamprophyre dikes and sills cutting all the rock units in the area. These sills often grade into a feldspar porphyry.

At the intrusive contacts breccias are formed with fragments of the intruded rock included as xenoliths and often the matrix have associated sulfides."

## 2.2 Property Geology (Figure 4)

The property geology is taken from Santos (1983).

"The property (Jo-Anne 1, Connor and Hungary Man) is underlain principally by rock units of The Hall Formation, Nelson Formation and greenstones possibly of The Rossland (Elise) Formation.

The Hall Formation consists of thin-bedded gray-green silicified meta-sediments with occasional black siliceous interbeds. This unit is well exposed on the Rover Creek road near the confluence of Connor and Rover Creeks and on the road to the Root Property.

Specimens from drill core show graded bedding. Quartz veins with pyrite often cut this unit. In proximity to intrusives this unit is highly sheared, chloritized, schistose, and foliated.

The bedding (and foliation) trend northwest and dip moderately to the southwest.

A dioritic phase (hornblende diorite) of the Nelson Formation intrudes The Hall Formation. This diorite is equigranular but grades to andesite at contacts with older formations. This chilled zone of andesite is quite often altered (serpentinized, chloritized, pyritized) to a foliated greenstone with the ferromagnesian minerals defining the

- 5 -

foliation. This greenstone is difficult to differentiate from The Rossland greenstones in the absence of field observation.

The Nelson Formation forms a batholith to the south of the property and a series of stocks intruding The Hall Formation on a northwest trend."

Rocks were sampled in most areas of known mineralization. Samples of the best sulphide exposures and commonly their hanging and footwalls were assayed for gold by Chemex Labs Ltd., North Vancouver, B.C.

During the course of geophysical surveying a general inventory of units was made. This was intended to establish primarily the approximate location of contact between intrusive rocks and meta-sediments where the focus of mineralization was expected. The results are shown in Figure 2.

Mineralization on the Hungary Man Claim consists of subvertical lenses up to 7 metres across and varying in length from a few metres to over 30 metres. These zones trend north-south appearing to roughly parallel the local structure of the Hall Formation. Gold values ranging up to 0.42 oz/ton occur in these zones of disseminated pyrite and semi-massive pyrite and pyrrhotite. Higher values in excess of 1.0 oz/ton are reported by others (see Santos, 1983).

Numerous old prospect pits and trenches have been located on the Connor Property. A single adit, 20 metres long, cross cuts a 6 metre thick zone at 0+00N 3+40W. Roughly 300 metres north of the main Hungary Man showing, in Connors Creek, are mineralized zones exposed by previous prospectors that may be an extension of the main showing.

The results of gold assays performed on samples from the Connor Gold property are summarized in Table 1. Most of the samples show significant gold mineralization although the values are sub-economic. In general, gold seems to be associated with massive, rather than disseminated sulphides.



### 3. SOIL GEOCHEMISTRY

#### 3.1 Sampling and Analytical Method

Soils were sampled from the B Horizon at 25m intervals throughout the grid. Approximately 550 samples were taken. B Horizon soil is generally well defined everywhere on the property at a depth of 6-12 inches (15-30cm) and the total depth of soil is not more than 2 feet (60cm) on the majority of the grid. The exception to this is in the valley bottom along Connor Creek where a significant thickness of glacial till is visible in road cuts and recorded in drill logs by Cominco (Cominco Assessment Report #8881). Where the conditions of thin overburden exist the use of soil geochemistry is considered to be a reasonable indicator of metal values in the subcrop.

Samples were collected in Kraft paper bags and analyzed for gold and arsenic by Chemex Labs Ltd. in North Vancouver, B.C. Results are shown in Figures 5 and 6.

#### 3.2 Discussion of Results

##### 3.2.1 Gold Geochemistry (Figure 5)

Anomalous gold values in soil occur in a number of locations on the Connor property grid. High values occur near all known locations of old workings at the following locations; 0N 0E (Hungary Man shaft), 0N 2+75W, 3N 0+50W and 6S 2+50W.

An overall concentration of marginally anomalous values lies near the baseline which trends approximately along Connor Creek. To a large extent these values are attributed to gravity concentration in the valley bottom sediments.

An extensively anomalous area spanning Lines 4S, 5S and 6S on the west portion of the grid coincides with two old pits which expose massive pyrite and pyrrhotite mineralization. Rock assays indicate anomalous gold mineralization as well. The nature of soil anomaly suggests a considerable extent to this zone.

To the east of the baseline, on Lines 4N and 5N, two anomalous values of 120 and 240 ppb are unexplained at this time.

### 3.2.2 Arsenic Geochemistry (Figure 6)

Two areas of distinct arsenic anomalies are identified. On the east half of the grid, trending roughly along the regional strike (340°) of bedding, a zone of high arsenic spans at least 800 metres remaining open to the north. A zone of particularly high values on Line 4N coincides with an anomalously high gold value in the same area.

Near 4+00 - 5+00W throughout the grid high arsenic values seem to characterize the approximate zone of contact between the Hall Formation and granodiorite along the ridgetop. This area is closely matched by magnetic anomalies and hosts a number of old adits, trenches and pits which intersect disseminated and massive sulphides.

The area of the Hungary Man workings (0N, 0E) is characterized by a lack of anomalous arsenic suggesting a highly restricted mineralized zone or a lack of arsenic associated with the sulphide mineralization or problems associated with sampling in deep valley overburden.

## 4. MAGNETOMETER SURVEY (Figure 7)

### 4.1 Method

A magnetics survey was performed with a McPhar GP-81 staff-mounted, proton precession magnetometer. This instrument measures the total magnetic field to a nominal precision of 1 gamma. Readings were taken every 25 metres with half stations estimated in the areas of interest. The standard looping method was invoked with all secondary base stations tied to a primary station in a noise-free area. Diurnal drift was observed to be average and no magnetic storm activity was detected.

All readings have been corrected for drift and tied to the primary base station at 0N+25W (defined as 57681 gammas). Results are plotted in Figure 7 with all values referenced to 57,000 gammas.

### 4.2 Discussion of Resultsf (Figure 5)

The detection of a magnetic response over sulphides on the adjacent Root property, as well as prior magnetic work

- 8 -


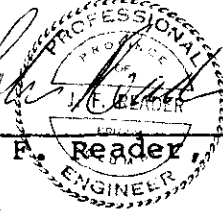
performed by Cominco in 1979 on the Hungary Man property, led to the performance of this survey. The survey over the old Cominco grid confirmed and extended the known anomalies.

In addition, several more significant anomalies were located. On the east half of the grid a linear anomaly which coincides with high arsenic values suggests a stratabound magnetic feature crossing 1S, 0N, 1N, 2N and 3N. Two distinct peaks on Lines 2S and 3S to the east are intriguing and as yet unexplained.

Numerous anomalies occur along the western fringe of the grid. On Lines 0N and 6S the major anomalies coincide with old workings penetrating sulphide mineralization with gold values. This indicates that the local magnetic highs are associated with mineralized zones. In addition, three zones appear along or near the contact between the plutonic rocks and the Hall Formation. The area of contact can be roughly identified by a change in background (Hall Formation 400-600 gammas, granodiorite 700-800 gammas). Zones in excess of 600 gammas may indicate granodiorite outcrop or near surface subcrop, a fact roughly confirmed by surface mapping in many areas.

No readily identifiable anomaly associated with the Hungary Man shaft or workings at 2+50N on the baseline is apparent. This suggests either that mineralization in these areas is not extensive or that the local depositional process has resulted in a lack of magnetic minerals.

Respectfully submitted,

  
John F. Reader, P.Eng.  


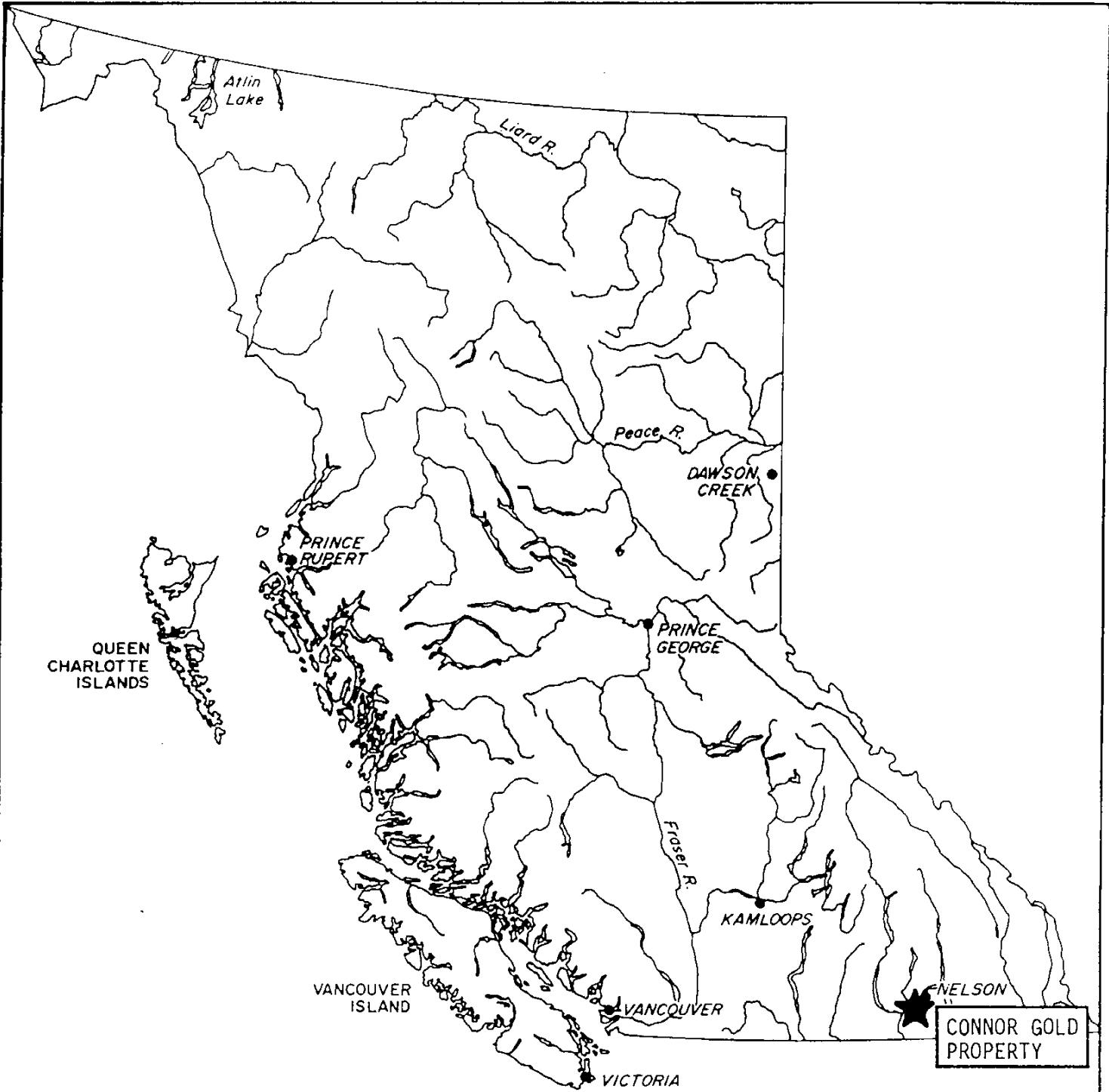
  
Dwayne L. Melrose, Geologist

February 29, 1984

5. BIBLIOGRAPHY

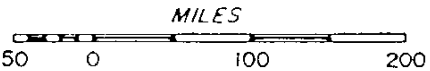
- Barasko, J.J., 1975: Snowwater Gold Prospect NTS 82F/6, Nelson Area, B.C., Geochemical Orientatin Survey.
- B.C. Ministry of Mines Report, 1900, p. 984; 1956, p. 79.
- Buchanan, L.J., 1981: Precious Metal Deposits Associated with Volcanic Environments in the Southwest, 22pp.
- Dunn, H.W., 1957: Report on the Star Group, Nelson, M.D., 7pp.
- Hutchinson, R.W., Burlington, J.L., 1983: Abstract and Conclusion from Some Broad Characteristics of Greenstone Belt Gold Lodes, 8pp.
- Jackish, Ingo, 1981: Geophysical Surveys on the Connor Group, Hungary Man Property South Slocan Area, Nelson, M.D., B.C., Cominco Assessment Report No. 9031, 6pp.
- Little, H.W., 1960: Nelson Map-Area West Half, British Columbia, GSC Paper 51-4, 58pp.
- Mulligan, R., 1952: Bonnington Map Area, B.C., GSC Paper 52-13, 37pp.
- Rayner, G.H., 1980: Property Examination Report, True Fissure Property 82F/6W, Esperanza Exploration Ltd., 4pp.
- Rockel, E.R., 1983: Discussion of Results from a VLF Electromagnetic and Total Field Magnetic Test Survey on the Root Property, 4pp.
- Santos, P.J., 1980: Description of Samples Submitted by Steve Paszty and Alex Terekoff, Castlegar Salmo Area, Cominco Ltd., File Note, 4pp.
- Santos, P.J., 1980: Report on the Property Investigation of the Millie Mack Property, Cominco Ltd., 30pp.
- Santos, P.J., 1983: Report on the Keystone Gold-Silver Project Delaware Resources Corp., 49pp.
- 
- 
-

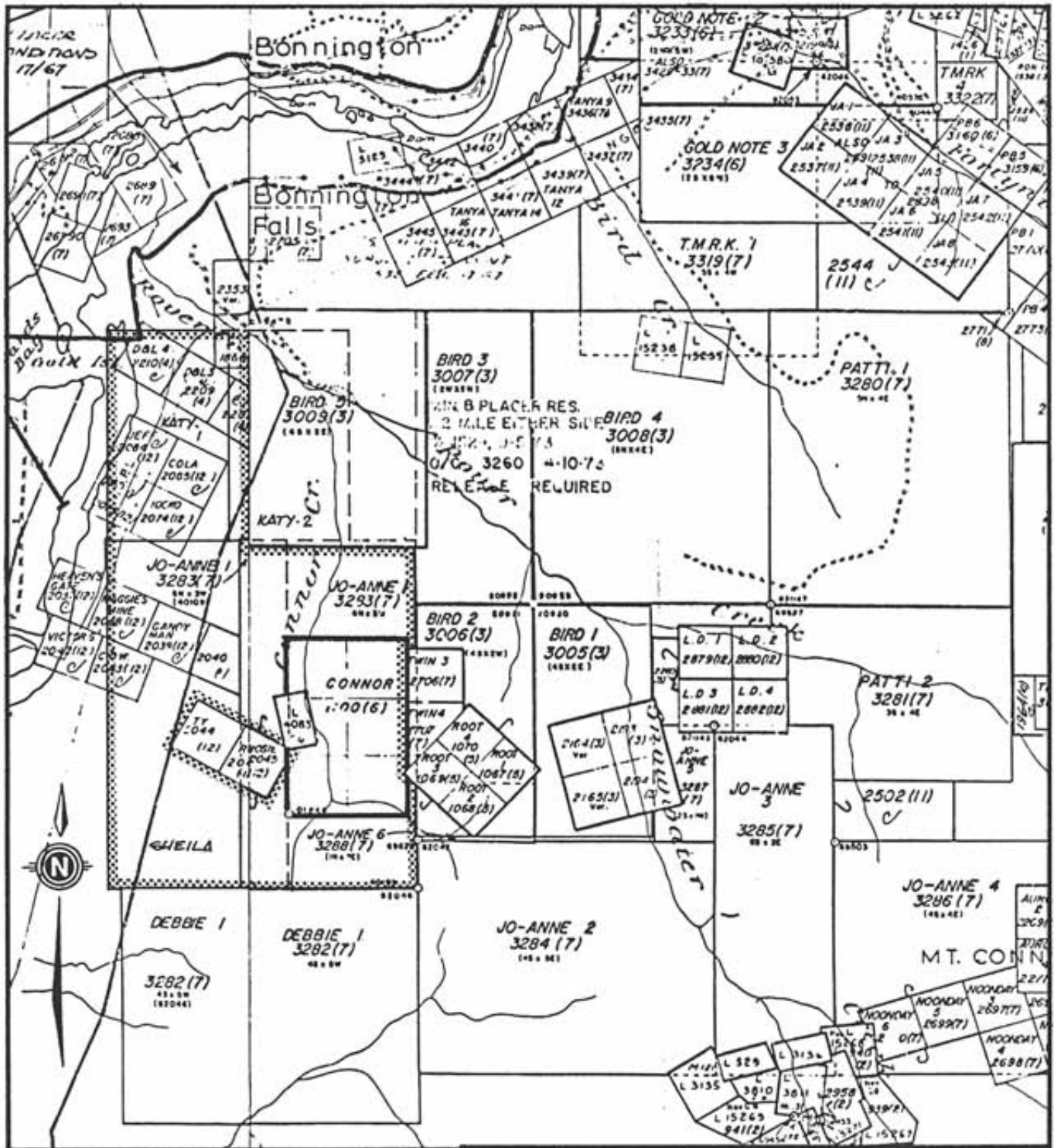
- Santos, P.J., 1983: Report on the Property of Patrick Resources Corporation, Rozan Gold Project, Red Mountain Area, Nelson M.D., B.C., NTS 82F/6, 37pp.
- Santos, P.J., 1983: Report on the Property of Noramex Minerals Inc./Waybo Resources Inc., Connor Gold Joint Venture, Connor Creek Area, Nelson M.D. NTS 82F/6, B.C.
- Santos, P.J., 1983: Report on the Property of Noramex Minerals Inc., Root Gold Project, Connors Creek Area, Nelson M.D., B.C. 46pp.
- Scott, Allen R., 1979: Geophysical Surveys on the Connor Property, Cominco Assessment Report No. 7901, 10pp.
- Serack, M.L., 1980: Diamond Drill Assessment Report on the Hungary Man Property, Nelson M.D., B.C., Cominco Ltd. Assessment Report No. 8881, 21pp.
- Siems, P.G.; Bush, J.H.; Bonichsen, W., 1982: Hydrothermal Alteration for Mineral Exploration Workshop, University of Idaho, 493pp.
- Sirola, W.M., 1983: Report on the Property of Delaware Resources Corp., Keystone Gold-Silver Project, Salmo Area-Nelson M.D., B.C. NTS 82F/3W, 5pp.
- Visagie, D., 1980: Report on the Root Property, Amoco-Canada Petroleum Company Ltd., 5pp.
- Weissenborn, A.E., (Editor), 1970: Lead-Zinc Deposit in the Kootenay Arc, N.E. Washington and Adjacent British Columbia, Bull. No. 61, Washington State Dept. of Natural Resources, 123pp.
- 
- 
-



★ NELSON  
**CONNOR GOLD  
 PROPERTY**

NORAMEX MINERALS INC. / WAYBO RESOURCES INC.	
<u>CONNOR GOLD PROPERTY</u>	
<b>LOCATION MAP</b>	
NELSON M.D., B.C.	NTS MAP 82F/6
FIGURE 1	SCALE: As Shown
NEVIN SADLIER-BROWN GOODBRAND LTD. FEBRUARY 1984	





NORAMEX MINERALS INC./WAYBO RESOURCES INC.

CONNOR GOLD PROPERTY

## CLAIM MAP

NELSON M.D., B.C.

NTS MAP 82F/6

FIGURE 2

SCALE 1:50,000

NEVIN SADLIER-BROWN GOODBRAND LTD.

FEBRUARY 1984

## LEGEND

### CENOZOIC

#### LOWER CRETACEOUS(?)

- 20** Valhalla Plutonic Rocks: granite, minor pegmatite
- 19** Nelson Plutonic Rocks: 19b - non-porphyrific granite to granodiorite; 19c - granodiorite; 19d - quartz diorite; 19e - syenite; 19f - mainly fine grained, porphyritic syenite to quartz diorite; 19h - pseudodiorite & pyroxene-hornblende-biotite rock; 19k - diorite

### MESOZOIC

#### JURASSIC MIDDLE & (?)UPPER JURASSIC

- 17** Hall Formation: Argillite, sandstone & conglomerate

#### LOWER JURASSIC

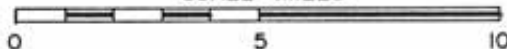
- 16** Rossland Formation: Andesite, latite, basalt, flow breccia, augite porphyry, agglomerate, tuff; minor shale
- 15** Simurian Beds: argillite, argillaceous quartzite, slate; minor flows & pyroclastic rocks. May be equivalent to upper parts of 13 & 14

#### PERMIAN(?), TRIASSIC(?) & LOWER JURASSIC(?)

- 14** YMIR GROUP  
Argillite, slate, argillaceous quartzite; minor limestone
- B** Argillite, argillaceous quartzite, greywacke; locally conglomerate; minor flows & pyroclastic rocks. Probably not older than Carboniferous, but in part may be Jurassic
- A** Augen gneiss, hornblende-biotite-feldspar gneiss; minor crystalline limestone & skarn. Probably Early Mesozoic



SCALE - MILES



NORAMEX MINERALS INC./WAYBO RESOURCES INC.

CONNOR GOLD PROPERTY

## REGIONAL GEOLOGY MAP

NELSON M.D., B.C.

GSC MAP 1090A  
NTS MAP 82F/6

FIGURE 3

SCALE 1:253,440

NEVIN SADLIER-BROWN GOODBRAND LTD.  
FEBRUARY 1984



TABLE 1: CONNOR GOLD PROPERTY ASSAY RESULTS

<u>SAMPLE</u>	<u>Au</u> <u>oz/ton</u>	<u>DESCRIPTION</u>
RES 133A	0.042	Channel sample redo of PJS #133
RES 133B	0.016	Massive sulphide grab of Hungary Man showing
2+70N 0+15E A	0.020	Downstream of Hungary Man showing
0+00N 4+00W	<0.003	Prospect pit uphill of Hungary Man showing
2+50N 0+10E A	0.003	Downstream of Hungary Man showing
2+70N 0+15E B	0.008	Downstream of Hungary Man showing, chip sample
0+00N 4+25W	<0.003	Prospect trench uphill of Hungary Man showing
0+00N 3+40W B	<0.003	Adit uphill of Hungary Man showing
0+00N 3+40C	0.018	Adit uphill of Hungary Man showing
0+20S 3+60W	0.022	Adit uphill of Hungary Man showing
0+00N 3+40W A	<0.003	Adit uphill of Hungary Man showing
3+00N 0+25E A	<0.003	Downstream of Hungary Man showing, above portal
2+50N 0+10E B	0.003	Downstream of Hungary Man showing, sulphide zone
3+00N 0+25E B	0.006	Adit downstream of Hungary Man showing
6S 3W Pit	0.018	Pyrite massive
6S 3W Pit	0.003	Footwall
6S 3W Pit	0.010	Hanging wall
0+00N 4+20W	0.003	Uphill trench from Hungary Man showing
32086	0.642	Hungary Man shaft dump
32087	0.340	Hungary Man adit dump
32088	0.022	Hungary Man road above showing
32089	0.005	Hungary Man road float
32090	0.080	Hungary Man showing
32091	0.007	Hungary Man core
32092	0.003	Hungary Man core

**Appendix A**  
**Statement of Qualifications**

---

---

---

Statement of Qualifications

I, John F. Reader, hereby certify that:

1. My residence address is 4410-47A Street, Delta, B.C. V4K 2N7
2. I am a consulting geological engineer with the firm of Nevin Sadlier-Brown Goodbrand Ltd., 401-134 Abbott Street, Vancouver, B.C. V6B 2K4
3. I hold a B.A.Sc. in Geological Engineering (Geophysics option) from the University of British Columbia. I have been practicing my profession since 1979, and am a registered member of the Association of Professional Engineers of the Province of British Columbia (Geological).
4. I am an Associate member of the Geological Association of Canada.
5. I have reviewed the literature and records regarding the Connor Gold property and surrounds personally.
6. I supervised and conducted the work described in this report and co-authored this report.

  
John F. Reader, P.Eng.

February 29, 1984

---

---

---

Statement of Qualifications

I, Dwayne L. Melrose hereby certify that:

1. My residence address is 323 Seymour River Place, North Vancouver, B.C. V7H 1S6
2. I am a consulting geologist with the firm of Nevin Sadlier-Brown Goodbrand Ltd., #401-134 Abbott' Street, Vancouver, B.C. V6B 2K4
3. I hold a B.Sc. in Honours Earth Science from the University of Waterloo, Waterloo, Ontario. I have been practicing my profession since 1981.
4. I am an Associate member of the Geological Association of Canada.
5. I have reviewed the data and literature concerning the Connor Gold Property and have co-authored this report.

  
Dwayne L. Melrose, Geologist

February 29, 1984

---

---

---

**Appendix B**  
**Certificate of Analyses**

---

---

---



# CHEMEX LABS LTD.

212 BROOKSBANK AVE.  
 NORTH VANCOUVER, B.C.  
 CANADA V7J 2C1  
 TELEPHONE: (604) 984-0221  
 TELEX: 043-52597

• ANALYTICAL CHEMISTS

• GEOCHEMISTS

• REGISTERED ASSAYERS

## CERTIFICATE OF ASSAY

TO : NEVIN SADLIER-BROWN GOODBRAND LTD.,

401 - 134 ABBOTT ST.  
 VANCOUVER, B.C.  
 V6B 2K4

CERT. # : A8315232-001-A  
 INVOICE # : I8315232  
 DATE : 11-OCT-83  
 P.C. # : NONE  
 CGNCRS JV

ATTN: BRIAN FAIRBANK

Sample description	Prep code	Pb %	Ag FA oz/T	Au FA oz/T			
1951	207	--	--	0.042	--	--	--
1952	207	--	--	0.016	--	--	--
1953	207	--	--	0.020	--	--	--
1954	207	--	--	<0.003	--	--	--
1955	207	--	--	0.003	--	--	--
1956	207	--	--	<0.003	--	--	--
1957	207	--	--	0.006	--	--	--
1958	207	--	--	0.008	--	--	--
1959	207	--	--	<0.003	--	--	--
1960	207	--	--	<0.003	--	--	--
1961	207	--	--	0.018	--	--	--
1962	207	--	--	0.022	--	--	--
1963	207	--	--	<0.003	--	--	--
1964	207	0.81	0.06	0.003	--	--	--
1965	207	--	--	<0.003	--	--	--
1966	207	--	--	0.003	--	--	--
1967	207	--	--	<0.003	--	--	--
1968	207	--	--	0.006	--	--	--
1969	207	--	--	0.018	--	--	--
1970	207	--	--	0.003	--	--	--
1971	207	--	--	0.010	--	--	--
1972	207	--	--	0.003	--	--	--

.....  
 Registered Assayer, Province of British Columbia





# CHEMEX LABS LTD.

212 BROOKSBANK AVE.  
NORTH VANCOUVER, B.C.  
CANADA V7J 2C1

TELEPHONE: (604) 984-0221  
TELEX: 043-52597

• ANALYTICAL CHEMISTS

• GEOCHEMISTS

• REGISTERED ASSAYERS

## CERTIFICATE OF ANALYSIS

TO : NEVIN SADLIER-BROWN GOODBRAND LTD.,

401 - 134 ABBOTT ST.  
VANCOUVER, B.C.  
V6B 2K4

CERT. # : A8315230-001-1  
INV. # : I831523C  
DATE : 6-CCT-83  
P.C. # : NONE  
HUNGARY MAN

ATTN: BRIAN FAIRBANK

Sample description	Prep code	AS ppm	AU-AA ppb				
HUNGARY MAN 1-3	201	17	20	--	--	--	--
HUNGARY MAN 1-5	201	10	60	--	--	--	--
HUNGARY MAN 1-6	201	130	20	--	--	--	--
HUNGARY MAN 2-6	201	10	10	--	--	--	--
HUNGARY MAN 2-7	201	22	20	--	--	--	--
HUNGARY MAN 2-8	201	9	10	--	--	--	--
HUNGARY MAN 2-9	201	7	20	--	--	--	--
HUNGARY MAN 2-10	201	10	10	--	--	--	--



MEMBER  
CANADIAN TESTING  
ASSOCIATION

Certified by *Hart Bichler*



# CHEMEX LABS LTD.

212 BROOKSBANK AVE.  
NORTH VANCOUVER, B.C.  
CANADA V7J 2C1

TELEPHONE: (604) 984-0221  
TELEX: 043-52597

• ANALYTICAL CHEMISTS

• GEOCHEMISTS

• REGISTERED ASSAYERS

## CERTIFICATE OF ASSAY

TO : NEVIN SADLIER-BROWN GOODBRAND LTD.,

401-134 ABBOTT ST.,  
VANCOUVER, B.C.  
V6B 2K4

CERT. # : A8314547-001-A  
INVOICE # : I8314547  
DATE : 16-SEP-83  
P.O. # : NONE  
HUNGRY MAN CONNER CR

ATTN: B. FARIBANK

Sample description	Prep code	Cu %	Pb %	Zn %	Ag FA oz/T	Au FA oz/T	
32086	207	0.27	0.03	0.01	0.06	0.642	Sheff dump main
32087	207	--	--	--	0.04	0.340	Sheff dump main
32088	207	--	--	--	0.04	0.022	north road at shydite
32089	207	--	--	--	0.01	0.005	" " -- tail
32090	207	--	--	--	0.06	0.080	heavy py 1 - ste main
32091	207	0.06	0.03	7.68	0.01	0.007	core split - subpy 20
32092	207	--	--	--	--	0.003	core py in shydite and in fractures w/ f.g. diorite.



MEMBER  
CANADIAN TESTING  
ASSOCIATION

*Nevin Sadlier-Brown*  
Registered Assayer, Province of British Columbia





# CHEMEX LABS LTD.

212 BROOKSBANK AVE.  
NORTH VANCOUVER, B.C.  
CANADA V7J 2C1

TELEPHONE: (604) 984-0221  
TELEX: 043-52597

• ANALYTICAL CHEMISTS

• GEOCHEMISTS

• REGISTERED ASSAYERS

## CERTIFICATE OF ANALYSIS

TO : NEVIN SADLIER-BROWN GOODBRAND LTD.,

401 - 134 ABBOTT ST.  
VANCOUVER, B.C.  
V6B 2K4

CERT. # : A8314999-001-A  
INVOICE # : I8314999  
DATE : 3-OCT-83  
P.O. # : NONE  
HUNGARY MAN

Sample description	Prep code	AS ppm	AU-AA ppb				
#1-1	201	14	<10	--	--	--	--
#1-2	201	6	<10	--	--	--	--
#1-4	201	14	10	--	--	--	--
#1-5	201	7	<10	--	--	--	--
#2-1	201	15	<10	--	--	--	--
#2-2	201	14	<10	--	--	--	--
#2-3	201	9	<10	--	--	--	--
#2-4	201	36	<10	--	--	--	--
#2-5	201	10	10	--	--	--	--



MEMBER  
CANADIAN TESTING  
ASSOCIATION

Certified by *Hart Bichler*



# CHEMEX LABS LTD.

212 BROOKSBANK AVE.  
NORTH VANCOUVER, B.C.  
CANADA V7J 2C1

TELEPHONE: (604) 984-0221  
TELEX: 043-52597

• ANALYTICAL CHEMISTS

• GEOCHEMISTS

• REGISTERED ASSAYERS

## CERTIFICATE OF ANALYSIS

TO : NEVIN SADLIER-BROWN GOODBRAND LTD.,

401 - 134 ABBOTT ST.  
VANCOUVER, B.C.  
V6B 2K4

CERT. # : A8315002-001-A  
INVOICE # : I8315002  
DATE : 3-OCT-83  
P.O. # : NONE  
CONNORS JV

Sample description	Prep code	AS ppm	AU-AA ppb				
0+00N 0+00E	201	12	620	--	--	--	--
0+00N 0+25E	201	17	10	--	--	--	--
0+00N 0+50E	201	11	<10	--	--	--	--
0+00N 0+75E	201	15	<10	--	--	--	--
0+00N 1+00E	201	15	<10	--	--	--	--
0+00N 1+25E	201	30	<10	--	--	--	--
0+00N 1+50E	201	24	<10	--	--	--	--
0+00N 1+75E	201	17	<10	--	--	--	--
0+00N 2+00E	201	14	<10	--	--	--	--
0+00N 2+25E	201	19	<10	--	--	--	--
0+00N 2+50E	201	30	<10	--	--	--	--
0+00N 2+75E	201	41	<10	--	--	--	--
0+00N 3+00E	201	41	<10	--	--	--	--
0+00N 3+25E	201	57	<10	--	--	--	--
0+00N 3+50E	201	50	<10	--	--	--	--
0+00N 4+00E	201	43	<10	--	--	--	--
0+00N 4+25E	201	50	<10	--	--	--	--
0+00N 4+50E	201	43	<10	--	--	--	--
0+00N 4+75E	201	16	<10	--	--	--	--
0+00N 5+00E	201	27	<10	--	--	--	--
0+00N 5+25E	201	11	10	--	--	--	--
0+00N 5+50E	201	19	40	--	--	--	--
0+00N 5+75E	201	48	<10	--	--	--	--
0+00N 6+00E	201	24	<10	--	--	--	--
0+00N 0+25W	201	10	<10	--	--	--	--
0+00N 0+50W	201	14	<10	--	--	--	--
0+00N 0+75W	201	15	<10	--	--	--	--
0+00N 1+00W	201	10	<10	--	--	--	--
0+00N 1+25W	201	6	<10	--	--	--	--
0+00N 1+50W	201	7	<10	--	--	--	--
0+00N 1+75W	201	6	<10	--	--	--	--
0+00N 2+00W	201	16	<10	--	--	--	--
0+00N 2+25W	201	10	<10	--	--	--	--
0+00N 2+50W	201	6	<10	--	--	--	--
0+00N 2+75W	201	6	260	--	--	--	--
0+00N 3+00W	201	9	<10	--	--	--	--
0+00N 3+25W	201	10	<10	--	--	--	--
0+00N 3A+50W	201	15	<10	--	--	--	--
0+00N 3B+50W	201	23	<10	--	--	--	--
0+00N 3+75W	201	19	<10	--	--	--	--



Certified by *Stuart Bickler*



# CHEMEX LABS LTD.

212 BROOKSBANK AVE.  
NORTH VANCOUVER, B.C.  
CANADA V7J 2C1

TELEPHONE: (604) 984-0221  
TELEX: 043-52597

• ANALYTICAL CHEMISTS

• GEOCHEMISTS

• REGISTERED ASSAYERS

## CERTIFICATE OF ANALYSIS

TO : NEVIN SADLIER-BROWN GOODBRAND LTD.,

401 - 134 ABBOTT ST.  
VANCOUVER, B.C.  
V6B 2K4

CERT. # : A8315002-002-A  
INVOICE # : I8315002  
DATE : 3-OCT-83  
P.O. # : NONE  
CONNORS JV

Sample description	Prep code	AS ppm	AU-AA ppb				
0+00N 4+00W	201	16	<10	--	--	--	--
0+00N 4+25W	201	10	<10	--	--	--	--
0+00N 4+50W	201	33	<10	--	--	--	--
0+00N 4+75W	201	15	<10	--	--	--	--
0+00N 5+00W	201	9	<10	--	--	--	--
1+00N 0+25E	201	7	<10	--	--	--	--
1+00N 0+50E	201	7	<10	--	--	--	--
1+00N 0+75E	201	10	<10	--	--	--	--
1+00N 1+00E	201	14	<10	--	--	--	--
1+00N 1+25E	201	9	<10	--	--	--	--
1+00N 1+50E	201	16	<10	--	--	--	--
1+00N 1+75E	201	15	<10	--	--	--	--
1+00N 2+00E	201	14	<10	--	--	--	--
1+00N 2+25E	201	9	<10	--	--	--	--
1+00N 2+50E	201	14	<10	--	--	--	--
1+00N 2+75E	201	22	<10	--	--	--	--
1+00N 3+00E	201	15	<10	--	--	--	--
1+00N 4+25E	201	23	<10	--	--	--	--
1+00N 4+50E	201	7	<10	--	--	--	--
1+00N 4+75E	201	17	<10	--	--	--	--
1+00N 5+00E	201	19	<10	--	--	--	--
1+00N 5+25E	201	22	<10	--	--	--	--
1+00N 5+50E	201	25	<10	--	--	--	--
1+00N 5+75E	201	60	<10	--	--	--	--
1+00N 6+00E	201	10	<10	--	--	--	--
1+00N 6+25E	201	12	<10	--	--	--	--
1+00N 6+50E	201	12	<10	--	--	--	--
1+00N 6+75E	201	9	<10	--	--	--	--
1+00N 0+00W	201	7	<10	--	--	--	--
1+00N 0+25W	201	11	<10	--	--	--	--
1+00N 0+50W	201	10	<10	--	--	--	--
1+00N 0+75W	201	7	<10	--	--	--	--
1+00N 1+00W	201	16	<10	--	--	--	--
1+00N 1+25W	201	7	<10	--	--	--	--
1+00N 1+50W	201	5	<10	--	--	--	--
1+00N 1+75W	201	10	<10	--	--	--	--
1+00N 2+25W	201	7	<10	--	--	--	--
1+00N 2+50W	201	9	<10	--	--	--	--
1+00N 2+75W	201	19	<10	--	--	--	--
1+00N 3+00W	201	16	<10	--	--	--	--



Certified by *Hart Bickler*



# CHEMEX LABS LTD.

212 BROOKSBANK AVE.  
 NORTH VANCOUVER, B.C.  
 CANADA V7J 2C1  
 TELEPHONE: (604) 984-0221  
 TELEX: 043-52597

• ANALYTICAL CHEMISTS

• GEOCHEMISTS

• REGISTERED ASSAYERS

## CERTIFICATE OF ANALYSIS

TO : NEVIN SADLIER-BROWN GOODBRAND LTD.,

401 - 134 ABBOTT ST.  
 VANCOUVER, B.C.  
 V6B 2K4

CERT. # : A8315002-003-A  
 INVOICE # : I8315002  
 DATE : 3-OCT-83  
 P.O. # : NONE  
 CONNORS JV

Sample description	Prep code	AS ppm	AU-AA ppb				
1+00N 3+25W	201	6	<10	--	--	--	--
1+00N 3+50W	201	9	<10	--	--	--	--
1+00N 3+75W	201	16	<10	--	--	--	--
1+00N 4+00W	201	9	<10	--	--	--	--
1+00N 4+25W	201	33	<10	--	--	--	--
1+00N 4+50W	201	11	<10	--	--	--	--
1+00N 4+75W	201	11	<10	--	--	--	--
1+00N 5+00W	201	12	<10	--	--	--	--
1+00S SILT	201	12	<10	--	--	--	--
1+00S 0+25E	201	9	20	--	--	--	--
1+00S 0+50E	201	11	20	--	--	--	--
1+00S 0+75E	201	12	10	--	--	--	--
1+00S 1+00E	201	15	<10	--	--	--	--
1+00S 1+25E	201	11	<10	--	--	--	--
1+00S 1+50E	201	11	<10	--	--	--	--
1+00S 1+75E	201	15	<10	--	--	--	--
1+00S 2+00E	201	11	<10	--	--	--	--
1+00S 2+25E	201	11	<10	--	--	--	--
1+00S 2+50E	201	14	<10	--	--	--	--
1+00S 2+75E	201	25	<10	--	--	--	--
1+00S 3+00E	201	35	<10	--	--	--	--
1+00S 3+25E	201	25	<10	--	--	--	--
1+00S 3+50E	201	33	<10	--	--	--	--
1+00S 3+75E	201	32	<10	--	--	--	--
1+00S 4+00E	201	23	<10	--	--	--	--
1+00S 4+25E	201	15	<10	--	--	--	--
1+00S 4+50E	201	22	<10	--	--	--	--
1+00S 4+75E	201	10	<10	--	--	--	--
1+00S 5+00E	201	11	<10	--	--	--	--
1+00S 5+25E	201	11	<10	--	--	--	--
1+00S 5+50E	201	10	<10	--	--	--	--
1+00S 5+75E	201	10	<10	--	--	--	--
1+00S 6+00E	201	10	<10	--	--	--	--
1+00S 0+00W	201	14	<10	--	--	--	--
1+00S 0+25W	201	14	30	--	--	--	--
1+00S 0+50W	201	15	<10	--	--	--	--
1+00S 0+75W	201	10	<10	--	--	--	--
1+00S 1+00W	201	9	<10	--	--	--	--
1+00S 1+25W	201	15	<10	--	--	--	--
1+00S 1+50W	201	7	<10	--	--	--	--



Certified by *Hart Bickler*



# CHEMEX LABS LTD.

212 BROOKSBANK AVE.  
NORTH VANCOUVER, B.C.  
CANADA V7J 2C1

TELEPHONE: (604) 984-0221  
TELEX: 043-52597

• ANALYTICAL CHEMISTS

• GEOCHEMISTS

• REGISTERED ASSAYERS

## CERTIFICATE OF ANALYSIS

TO : NEVIN SADLIER-BROWN GOODBRAND LTD.,

401 - 134 ABBOTT ST.  
VANCOUVER, B.C.  
V6B 2K4

CERT. # : A8315002-004-A  
INVOICE # : I8315002  
DATE : 3-OCT-83  
P.O. # : NONE  
CONNORS JV

Sample description	Prep code	AS ppm	AU-AA ppb				
1+00S 1+75W	201	6	<10	--	--	--	--
1+00S 2+00W	201	7	<10	--	--	--	--
1+00S 2+25W	201	19	<10	--	--	--	--
1+00S 2+50W	201	9	<10	--	--	--	--
1+00S 2+75W	201	23	<10	--	--	--	--
1+00S 3+00W	201	9	<10	--	--	--	--
1+00S 3+25W	201	15	<10	--	--	--	--
1+00S 3+50W	201	15	<10	--	--	--	--
1+00S 3+75W	201	23	<10	--	--	--	--
1+00S 4+00W	201	33	<10	--	--	--	--
1+00S 4+25W	201	63	<10	--	--	--	--
1+00S 4+50W	201	25	<10	--	--	--	--
1+00S 4+75W	201	11	<10	--	--	--	--
1+00S 5+00W	201	11	<10	--	--	--	--
2+00N 0+00E	201	16	<10	--	--	--	--
2+00N 0+75E	201	6	<10	--	--	--	--
2+00N 1+00E	201	9	<10	--	--	--	--
2+00N 1+25E	201	15	<10	--	--	--	--
2+00N 1+50E	201	9	<10	--	--	--	--
2+00N 1+75E	201	12	<10	--	--	--	--
2+00N 2+00E	201	11	<10	--	--	--	--
2+00N 2+25E	201	16	<10	--	--	--	--
2+00N 2+50E	201	20	<10	--	--	--	--
2+00N 2+75E	201	19	<10	--	--	--	--
2+00N 3+00E	201	36	<10	--	--	--	--
2+00N 3+25E	201	24	<10	--	--	--	--
2+00N 3+50E	201	14	<10	--	--	--	--
2+00N 3+75E	201	9	<10	--	--	--	--
2+00N 4+00E	201	12	<10	--	--	--	--
2+00N 4+50E	201	11	<10	--	--	--	--
2+00N 4+75E	201	12	<10	--	--	--	--
2+00N 5+00E	201	10	<10	--	--	--	--
2+00N 5+25E	201	16	<10	--	--	--	--
2+00N 5+50E	201	6	<10	--	--	--	--
2+00N 5+75E	201	12	<10	--	--	--	--
2+00N 6+00E	201	9	<10	--	--	--	--
2+00N 6+25E	201	7	<10	--	--	--	--
2+00N 6+50E	201	5	<10	--	--	--	--
2+00N 6+75E	201	11	<10	--	--	--	--
2+00N 7+00E	201	10	<10	--	--	--	--



Certified by *Hart Bichler*....



# CHEMEX LABS LTD.

212 BROOKSBANK AVE.  
 NORTH VANCOUVER, B.C.  
 CANADA V7J 2C1  
 TELEPHONE: (604) 984-0221  
 TELEX: 043-52597

• ANALYTICAL CHEMISTS • GEOCHEMISTS • REGISTERED ASSAYERS

## CERTIFICATE OF ANALYSIS

TO : NEVIN SADLIER-BROWN GOODBRAND LTD.,

401 - 134 ABBOTT ST.  
 VANCOUVER, B.C.  
 V6B 2K4

CERT. # : A8315002-005-A  
 INVOICE # : 18315002  
 DATE : 3-OCT-83  
 P.O. # : NONE  
 CONNORS JV

Sample description	Prep code	AS ppm	AU-AA ppb				
2+00N 7+25E	201	11	<10	--	--	--	--
2+00N 7+50E	201	7	<10	--	--	--	--
2+00N 0+00W	201	14	<10	--	--	--	--
2+00N 0+25W	201	7	<10	--	--	--	--
2+00N 0+50W	201	7	<10	--	--	--	--
2+00N 0+75W	201	9	<10	--	--	--	--
2+00N 1+00W	201	11	10	--	--	--	--
2+00N 1+25W	201	12	<10	--	--	--	--
2+00N 1+50W	201	11	<10	--	--	--	--
2+00N 1+75W	201	11	<10	--	--	--	--
2+00N 2+00W	201	16	<10	--	--	--	--
2+00N 2+25W	201	9	<10	--	--	--	--
2+00N 2+50W	201	10	<10	--	--	--	--
2+00N 2+75W	201	12	<10	--	--	--	--
2+00N 3+00W	201	14	<10	--	--	--	--
2+00N 3+25W	201	7	<10	--	--	--	--
2+00N 3+50W	201	7	<10	--	--	--	--
2+00N 3+75W	201	15	<10	--	--	--	--
2+00N 4+00W	201	14	<10	--	--	--	--
2+00N 4+25W	201	11	<10	--	--	--	--
2+00N 4+50W	201	24	<10	--	--	--	--
2+00N 4+75W	201	9	<10	--	--	--	--
2+00N 5+00W	201	15	<10	--	--	--	--
2+00S 0+00E	201	16	<10	--	--	--	--
2+00S 0+25E	201	16	<10	--	--	--	--
2+00S 0+50E	201	14	<10	--	--	--	--
2+00S 0+75E	201	22	<10	--	--	--	--
2+00S 1+00E	201	14	40	--	--	--	--
2+00S 1+25E	201	16	<10	--	--	--	--
2+00S 1+50E	201	27	<10	--	--	--	--
2+00S 1+75E	201	16	<10	--	--	--	--
2+00S 2+00E	201	17	<10	--	--	--	--
2+00S 2+25E	201	24	<10	--	--	--	--
2+00S 2+50E	201	14	<10	--	--	--	--
2+00S 2+75E	201	11	<10	--	--	--	--
2+00S 3+00E	201	11	<10	--	--	--	--
2+00S 3+25E	201	12	<10	--	--	--	--
2+00S 3+50E	201	12	<10	--	--	--	--
2+00S 3+75E	201	40	<10	--	--	--	--
2+00S 4+00E	201	38	<10	--	--	--	--



Certified by *Hart Bichler*



# CHEMEX LABS LTD.

212 BROOKSBANK AVE.  
NORTH VANCOUVER, B.C.  
CANADA V7J 2C1

TELEPHONE: (604) 984-0221  
TELEX: 043-52597

• ANALYTICAL CHEMISTS

• GEOCHEMISTS

• REGISTERED ASSAYERS

## CERTIFICATE OF ANALYSIS

TO : NEVIN SADLIER-BROWN GOODBRAND LTD.,

401 - 134 ABBOTT ST.  
VANCOUVER, B.C.  
V6B 2K4

CERT. # : A8315002-006-1  
INVOICE # : 18315002  
DATE : 3-OCT-83  
P.C. # : NONE  
CONNORS JV

Sample description	Prep code	AS ppm	AU-AA ppb				
2+00S 4+25E	201	46	<10	--	--	--	--
2+00S 4+50E	201	22	<10	--	--	--	--
2+00S 4+75E	201	17	<10	--	--	--	--
2+00S 5+00E	201	9	<10	--	--	--	--
2+00S 5+25E	201	10	<10	--	--	--	--
2+00S 5+50E	201	9	<10	--	--	--	--
2+00S 5+75E	201	9	<10	--	--	--	--
2+00S 6+00E	201	10	<10	--	--	--	--
2+00S 6+25E	201	7	<10	--	--	--	--
2+00S 0+00W	201	17	<10	--	--	--	--
2+00S 0+25W	201	10	<10	--	--	--	--
2+00S 0+50W	201	7	<10	--	--	--	--
2+00S 0+75W	201	11	<10	--	--	--	--
2+00S 1+00W	201	16	<10	--	--	--	--
2+00S 1+25W	201	15	<10	--	--	--	--
2+00S 1+50W	201	7	<10	--	--	--	--
2+00S 1+75W	201	10	<10	--	--	--	--
2+00S 2+00W	201	9	<10	--	--	--	--
2+00S 2+25W	201	10	<10	--	--	--	--
2+00S 2+50W	201	14	<10	--	--	--	--
2+00S 2+75W	201	12	<10	--	--	--	--
2+00S 3+00W	201	10	<10	--	--	--	--
2+00S 3+25W	201	10	<10	--	--	--	--
2+00S 3+50W	201	17	20	--	--	--	--
2+00S 3+75W	201	10	<10	--	--	--	--
2+00S 4+00W	201	16	<10	--	--	--	--
2+00S 4+25W	201	10	<10	--	--	--	--
2+00S 4+50W	201	10	<10	--	--	--	--
2+00S 4+75W	201	11	<10	--	--	--	--
2+00S 5+00W	201	40	<10	--	--	--	--



MEMBER  
CANADIAN TESTING  
ASSOCIATION

Certified by *Hart Bickler*.....



# CHEMEX LABS LTD.

212 BROOKSBANK AVE.  
NORTH VANCOUVER, B.C.  
CANADA V7J 2C1

TELEPHONE: (604) 984-0221  
TELEX: 043-52597

• ANALYTICAL CHEMISTS

• GEOCHEMISTS

• REGISTERED ASSAYERS

## CERTIFICATE OF ANALYSIS

TO : NEVIN SADLIER-BROWN GOODBRAND LTD.,

401 - 134 ABBOTT ST.  
VANCOUVER, B.C.  
V6B 2K4

CERT. # : A8315003-001-1  
INVOICE # : I8315003  
DATE : 5-OCT-83  
P.O. # : NONE  
CONNORS JV

Sample description	Prep code	AS ppm	AU-AA ppb				
3+00N 0+00W	201	12	<10	--	--	--	--
3+00N 0+25W	201	10	<10	--	--	--	--
3+00N 0+50W	201	11	320	--	--	--	--
3+00N 0+75W	201	11	<10	--	--	--	--
3+00N 1+00W	201	7	<10	--	--	--	--
3+00N 1+25W	201	7	<10	--	--	--	--
3+00N 1+50W	201	7	40	--	--	--	--
3+00N 1+75W	201	9	<10	--	--	--	--
3+00N 2+00W	201	7	<10	--	--	--	--
3+00N 2+25W	201	29	<10	--	--	--	--
3+00N 2+50W	201	7	<10	--	--	--	--
3+00N 2+75W	201	6	<10	--	--	--	--
3+00N 3+00W	201	6	<10	--	--	--	--
3+00N 3+25W	201	10	<10	--	--	--	--
3+00N 3+50W	201	9	<10	--	--	--	--
3+00N 3+75W	201	11	<10	--	--	--	--
3+00N 4+00W	201	17	<10	--	--	--	--
3+00N 4+25W	201	22	<10	--	--	--	--
3+00N 4+50W	201	16	<10	--	--	--	--
3+00N 4+75W	201	29	<10	--	--	--	--
3+00S SILT	201	12	10	--	--	--	--
3+00S 0+00E	201	9	<10	--	--	--	--
3+00S 0+25E	201	12	<10	--	--	--	--
3+00S 0+50E	201	9	80	--	--	--	--
3+00S 0+75E	201	7	10	--	--	--	--
3+00S 1+00E	201	16	100	--	--	--	--
3+00S 1+25E	201	16	<10	--	--	--	--
3+00S 1+50E	201	7	<10	--	--	--	--
3+00S 1+75E	201	10	<10	--	--	--	--
3+00S 2+00E	201	10	<10	--	--	--	--
3+00S 2+25E	201	9	10	--	--	--	--
3+00S 2+50E	201	14	<10	--	--	--	--
3+00S 2+75E	201	9	<10	--	--	--	--
3+00S 3+00E	201	16	<10	--	--	--	--
3+00S 3+25E	201	17	<10	--	--	--	--
3+00S 3+50E	201	43	10	--	--	--	--
3+00S 3+75E	201	24	10	--	--	--	--
3+00S 4+00E	201	29	<10	--	--	--	--
3+00S 4+25E	201	22	<10	--	--	--	--
3+00S 4+50E	201	10	<10	--	--	--	--

Certified by *Hart Buchler*







# CHEMEX LABS LTD.

212 BROOKSBANK AVE.  
NORTH VANCOUVER, B.C.  
CANADA V7J 2C1

TELEPHONE: (604) 984-0221  
TELEX: 043-52597

• ANALYTICAL CHEMISTS

• GEOCHEMISTS

• REGISTERED ASSAYERS

## CERTIFICATE OF ANALYSIS

TO : NEVIN SADLIER-BROWN GOODBRAND LTD.,

401 - 134 ABBOTT ST.  
VANCOUVER, B.C.  
V6B 2K4

CERT. # : A8315003-002-A  
INVOICE # : I8315003  
DATE : 5-OCT-83  
P.O. # : NONE  
CCNNORS JV

Sample description	Prep code	AS ppm	AU-AA ppb				
3+00S 4+75E	201	10	60	--	--	--	--
3+00S 5+00E	201	10	<10	--	--	--	--
3+00S 5+25E	201	12	<10	--	--	--	--
3+00S 5+50E	201	7	<10	--	--	--	--
3+00S 5+75E	201	7	<10	--	--	--	--
3+00S 6+00E	201	10	<10	--	--	--	--
3+00S 6+25E	201	12	<10	--	--	--	--
3+00S 0+00W	201	20	<10	--	--	--	--
3+00S 0+25W	201	10	<10	--	--	--	--
3+00S 0+75W	201	14	<10	--	--	--	--
3+00S 1+00W	201	12	<10	--	--	--	--
3+00S 1+25W	201	14	<10	--	--	--	--
3+00S 1+75W	201	29	<10	--	--	--	--
3+00S 2+00W	201	9	50	--	--	--	--
3+00S 2+25W	201	23	60	--	--	--	--
3+00S 2+50W	201	11	<10	--	--	--	--
3+00S 2+75W	201	16	<10	--	--	--	--
3+00S 3+00W	201	22	<10	--	--	--	--
3+00S 3+25W	201	23	<10	--	--	--	--
3+00S 3+50W	201	69	<10	--	--	--	--
3+00S 3+75W	201	17	<10	--	--	--	--
3+00S 4+00W	201	15	<10	--	--	--	--
3+00S 4+25W	201	9	<10	--	--	--	--
3+00S 4+50W	201	14	<10	--	--	--	--
3+00S 4+75W	201	17	<10	--	--	--	--
3+00S 5+00W	201	10	<10	--	--	--	--
4+00N 0+00W	201	10	<10	--	--	--	--
4+00N 0+25W	201	11	10	--	--	--	--
4+00N 0+50W	201	11	<10	--	--	--	--
4+00N 0+75W	201	9	<10	--	--	--	--
4+00N 1+00W	201	12	<10	--	--	--	--
4+00N 1+25W	201	12	<10	--	--	--	--
4+00N 1+50W	201	10	<10	--	--	--	--
4+00N 1+75W	201	11	<10	--	--	--	--
4+00N 2+00W	201	10	<10	--	--	--	--
4+00N 2+25W	201	27	<10	--	--	--	--
4+00N 2+50W	201	39	<10	--	--	--	--
4+00N 2+75W	201	48	<10	--	--	--	--
4+00N 3+00W	201	20	<10	--	--	--	--
4+00N 3+25W	201	25	<10	--	--	--	--



Certified by *Hart Buchler*



# CHEMEX LABS LTD.

212 BROOKSBANK AVE.  
NORTH VANCOUVER, B.C.  
CANADA V7J 2C1

TELEPHONE: (604) 984-0221  
TELEX: 043-52597

• ANALYTICAL CHEMISTS

• GEOCHEMISTS

• REGISTERED ASSAYERS

## CERTIFICATE OF ANALYSIS

TO : NEVIN SADLIER-BROWN GOODBRAND LTD.,

401 - 134 ABBOTT ST.  
VANCOUVER, B.C.  
V6B 2K4

CERT. # : A8315003-003-1  
INVOICE # : 18315003  
DATE : 5-OCT-83  
P.O. # : NONE  
CONNORS JV

Sample description	Prep code	AS ppm	AU-AA ppb				
4+00N 3+50W	201	33	<10	--	--	--	--
4+00N 3+75W	201	30	<10	--	--	--	--
4+00N 4+00W	201	22	<10	--	--	--	--
4+00N 4+50W	201	65	<10	--	--	--	--
4+00N 4+75W	201	79	<10	--	--	--	--
4+00S SILT A	201	11	60	--	--	--	--
4+00S SILT B	201	17	<10	--	--	--	--
4+00S 0+00E	201	14	<10	--	--	--	--
4+00S 0+25E	201	10	<10	--	--	--	--
4+00S 0+50E	201	9	<10	--	--	--	--
4+00S 0+75E	201	22	<10	--	--	--	--
4+00S 1+00E	201	10	<10	--	--	--	--
4+00S 1+25E	201	10	<10	--	--	--	--
4+00S 1+50E	201	7	<10	--	--	--	--
4+00S 1+75E	201	10	<10	--	--	--	--
4+00S 2+00E	201	9	<10	--	--	--	--
4+00S 2+25E	201	9	<10	--	--	--	--
4+00S 2+50E	201	6	<10	--	--	--	--
4+00S 2+75E	201	7	<10	--	--	--	--
4+00S 3+00E	201	6	<10	--	--	--	--
4+00S 3+25E	201	12	<10	--	--	--	--
4+00S 3+50E	201	11	<10	--	--	--	--
4+00S 3+75E	201	11	<10	--	--	--	--
4+00S 4+00E	201	9	<10	--	--	--	--
4+00S 4+25E	201	10	<10	--	--	--	--
4+00S 4+50E	201	9	<10	--	--	--	--
4+00S 4+75E	201	14	<10	--	--	--	--
4+00S 5+00E	201	10	<10	--	--	--	--
4+00S 5+25E	201	12	<10	--	--	--	--
4+00S 5+50E	201	10	<10	--	--	--	--
4+00S 5+75E	201	12	<10	--	--	--	--
4+00S 6+00E	201	16	<10	--	--	--	--
4+00S 6+25E	201	11	<10	--	--	--	--
5+00N 0+00W	201	5	<10	--	--	--	--
5+00N 0+25W	201	9	<10	--	--	--	--
5+00N 0+50W	201	6	50	--	--	--	--
5+00N 0+75W	201	5	10	--	--	--	--
5+00N 1+00W	201	3	<10	--	--	--	--
5+00N 1+25W	201	7	<10	--	--	--	--
5+00N 1+50W	201	7	<10	--	--	--	--

Certified by *Hart Bickler*





# CHEMEX LABS LTD.

212 BROOKSBANK AVE.  
NORTH VANCOUVER, B.C.  
CANADA V7J 2C1

TELEPHONE: (604) 984-0221  
TELEX: 043-52597

• ANALYTICAL CHEMISTS

• GEOCHEMISTS

• REGISTERED ASSAYERS

## CERTIFICATE OF ANALYSIS

TO : NEVIN SADLIER-BROWN GOODBRAND LTD.,

401 - 134 ABBOTT ST.  
VANCOUVER, B.C.  
V6B 2K4

CERT. # : A8315003-004-A  
INVOICE # : I8315003  
DATE : 5-OCT-83  
P.O. # : NONE  
CONNORS JV

Sample description	Prep code	AS ppm	AU-AA ppb				
5+00N 1+75W	201	6	10	--	--	--	--
5+00N 2+00W	201	15	<10	--	--	--	--
5+00N 2+25W	201	65	<10	--	--	--	--
5+00N 2+50W	201	59	10	--	--	--	--
5+00N 2+75W	201	36	<10	--	--	--	--
5+00N 3+00W	201	32	<10	--	--	--	--
5+00N 3+25W	201	33	<10	--	--	--	--
5+00N 3+50W	201	22	<10	--	--	--	--
5+00N 4+25W	201	33	10	--	--	--	--
5+00N 4+50W	201	35	<10	--	--	--	--
5+00N 4+75W	201	19	<10	--	--	--	--



Certified by *Hart Bichler*



# CHEMEX LABS LTD.

212 BROOKSBANK AVE.  
NORTH VANCOUVER, B.C.  
CANADA V7J 2C1

TELEPHONE: (604) 984-0221  
TELEX: 043-52597

• ANALYTICAL CHEMISTS

• GEOCHEMISTS

• REGISTERED ASSAYERS

## CERTIFICATE OF ANALYSIS

TO : NEVIN SADLIER-BROWN GOODBRAND LTD.,

401 - 134 ABBOTT ST.  
VANCOUVER, B.C.  
V6B 2K4

CERT. # : A8315229-001-A  
INVOICE # : I8315229  
DATE : 6-OCT-83  
P.C. # : NONE  
CCNNGRS JV

ATTN: BRIAN FAIRBANK

Sample description	Prep code	AS ppm	AU-AA ppb				
3+00N 0+25E	201	490	60	--	--	--	--
3+00N 0+75E	201	17	<10	--	--	--	--
3+00N 1+00E	201	11	10	--	--	--	--
3+00N 1+25E	201	10	<10	--	--	--	--
3+00N 1+50E	201	11	<10	--	--	--	--
3+00N 1+75E	201	19	<10	--	--	--	--
3+00N 2+00E	201	35	20	--	--	--	--
3+00N 2+25E	201	35	<10	--	--	--	--
3+00N 2+50E	201	27	<10	--	--	--	--
3+00N 2+75E	201	30	<10	--	--	--	--
3+00N 3+00E	201	14	<10	--	--	--	--
3+00N 3+25E	201	11	<10	--	--	--	--
3+00N 3+50E	201	6	<10	--	--	--	--
3+00N 3+75E	201	7	<10	--	--	--	--
3+00N 4+00E	201	11	10	--	--	--	--
3+00N 4+25E	201	15	<10	--	--	--	--
3+00N 4+50E	201	20	50	--	--	--	--
3+00N 4+75E	201	12	30	--	--	--	--
3+00N 5+00E	201	22	<10	--	--	--	--
3+00N 5+25E	201	10	<10	--	--	--	--
3+00N 5+50E	201	9	<10	--	--	--	--
3+00N 5+75E	201	10	<10	--	--	--	--
3+00N 6+00E	201	15	<10	--	--	--	--
3+00N 6+25E	201	14	<10	--	--	--	--
3+00N 6+50E	201	29	<10	--	--	--	--
3+00N 6+75E	201	135	<10	--	--	--	--
3+00N 7+00E	201	9	<10	--	--	--	--
4+00N 0+25E	201	9	10	--	--	--	--
4+00N 0+50E	201	20	<10	--	--	--	--
4+00N 0+75E	201	10	<10	--	--	--	--
4+00N 1+00E	201	10	<10	--	--	--	--
4+00N 1+25E	201	10	<10	--	--	--	--
4+00N 1+50E	201	600	240	--	--	--	--
4+00N 1+75E	201	46	<10	--	--	--	--
4+00N 2+00E	201	43	<10	--	--	--	--
4+00N 2+25E	201	46	<10	--	--	--	--
4+00N 2+50E	201	55	<10	--	--	--	--
4+00N 2+75E	201	16	<10	--	--	--	--
4+00N 3+00E	201	15	<10	--	--	--	--
4+00N 3+25E	201	25	<10	--	--	--	--



Certified by *Hart Bichler*



# CHEMEX LABS LTD.

212 BROOKSBANK AVE.  
NORTH VANCOUVER, B.C.  
CANADA V7J 2C1

TELEPHONE: (604) 984-0221  
TELEX: 043-52597

• ANALYTICAL CHEMISTS

• GEOCHEMISTS

• REGISTERED ASSAYERS

## CERTIFICATE OF ANALYSIS

TO : NEVIN SADLIER-BROWN GOODBRAND LTD.,

401 - 134 ABBOTT ST.  
VANCOUVER, B.C.  
V6B 2K4

CERT. # : A8315229-002-A  
INVOICE # : I8315229  
DATE : 6-OCT-83  
P.O. # : NONE  
CCNCRS JV

ATTN: BRIAN FAIRBANK

Sample description	Prep code	AS ppm	AU-AA ppb				
4+00N 3+50E	201	10	<10	--	--	--	--
4+00N 3+75E	201	9	<10	--	--	--	--
4+00N 4+00E	201	11	<10	--	--	--	--
4+00N 4+25E	201	27	<10	--	--	--	--
4+00N 4+50E	201	11	<10	--	--	--	--
4+00N 4+75E	201	7	<10	--	--	--	--
4+00N 5+00E	201	5	10	--	--	--	--
4+00N 5+25E	201	5	<10	--	--	--	--
4+00N 5+50E	201	5	<10	--	--	--	--
4+00N 5+75E	201	7	<10	--	--	--	--
4+00N 6+00E	201	6	<10	--	--	--	--
4+00N 6+25E	201	6	<10	--	--	--	--
4+00N 6+50E	201	6	<10	--	--	--	--
4+00N 6+75E	201	4	<10	--	--	--	--
4+00N 7+00E	201	6	<10	--	--	--	--
4+00S 0+00W	201	10	10	--	--	--	--
4+00S 0+25W	201	11	30	--	--	--	--
4+00S 0+50W	201	7	<10	--	--	--	--
4+00S 0+75W	201	10	<10	--	--	--	--
4+00S 1+00W	201	9	<10	--	--	--	--
4+00S 1+25W	201	2	<10	--	--	--	--
4+00S 1+50W	201	5	<10	--	--	--	--
4+00S 1+75W	201	3	<10	--	--	--	--
4+00S 2+25W	201	7	<10	--	--	--	--
4+00S 2+50W	201	7	<10	--	--	--	--
4+00S 2+75W	201	11	<10	--	--	--	--
4+00S 3+00W	201	12	<10	--	--	--	--
4+00S 3+25W	201	500	960	--	--	--	--
4+00S 3+50W	201	15	<10	--	--	--	--
4+00S 3+75W	201	36	30	--	--	--	--
4+00S 4+00W	201	11	<10	--	--	--	--
4+00S 4+25W	201	15	<10	--	--	--	--
4+00S 4+50W	201	27	<10	--	--	--	--
4+00S 4+75W	201	12	10	--	--	--	--
4+00S 5+00W	201	29	<10	--	--	--	--
5+00N 0+25E	201	4	<10	--	--	--	--
5+00N 0+50E	201	10	<10	--	--	--	--
5+00N 0+75E SILT	203	19	120	--	--	--	--
5+00N 1+00E	201	12	<10	--	--	--	--
5+00N 1+25E	201	23	<10	--	--	--	--

Certified by *Hart Bichler*





# CHEMEX LABS LTD.

212 BROOKSBANK AVE.  
NORTH VANCOUVER, B.C.  
CANADA V7J 2C1

• ANALYTICAL CHEMISTS

• GEOCHEMISTS

• REGISTERED ASSAYERS

TELEPHONE: (604) 984-0221  
TELEX: 043-52597

## CERTIFICATE OF ANALYSIS

TO : NEVIN SADLIER-BRCWN GOODBRAND LTD.,

401 - 134 ABBOTT ST.  
VANCOUVER, B.C.  
V6B 2K4

CERT. # : A8315229-003-A  
INVOICE # : I8315229  
DATE : 6-OCT-83  
P.C. # : NONE  
CONNCRS JV

ATTN: BRIAN FAIRBANK

Sample description	Prep code	AS ppm	AU-AA ppb				
5+00N 1+50E	201	36	<10	--	--	--	--
5+00N 1+75E	201	38	<10	--	--	--	--
5+00N 2+00E	201	57	<10	--	--	--	--
5+00N 2+50E	201	30	<10	--	--	--	--
5+00N 2+75E	201	12	<10	--	--	--	--
5+00N 3+00E	201	15	<10	--	--	--	--
5+00N 3+25E	201	7	<10	--	--	--	--
5+00N 3+50E	201	7	<10	--	--	--	--
5+00N 3+75E	201	5	<10	--	--	--	--
5+00N 4+00E	201	7	<10	--	--	--	--
5+00N 4+25E	201	11	<10	--	--	--	--
5+00N 4+50E	201	46	<10	--	--	--	--
5+00N 4+75E	201	9	<10	--	--	--	--
5+00N 5+00E	201	11	<10	--	--	--	--
5+00N 5+25E	201	11	<10	--	--	--	--
5+00N 5+50E	201	15	<10	--	--	--	--
5+00N 5+75E	201	16	<10	--	--	--	--
5+00N 6+00E	201	6	<10	--	--	--	--
5+00N 6+25E	201	7	<10	--	--	--	--
5+00N 6+50E	201	6	<10	--	--	--	--
5+00N 6+75E	201	9	<10	--	--	--	--
5+00N 7+00E	201	6	<10	--	--	--	--
5+00N SILTSAMPLE	201	19	30	--	--	--	--
5+00S 0+25E	201	12	80	--	--	--	--
5+00S 0+50E	201	10	<10	--	--	--	--
5+00S 0+75E	201	10	<10	--	--	--	--
5+00S 1+00E A	201	11	<10	--	--	--	--
5+00S 1+00E B	201	10	<10	--	--	--	--
5+00S 1+25E	201	9	30	--	--	--	--
5+00S 1+50E	201	20	<10	--	--	--	--
5+00S 1+75E	201	19	<10	--	--	--	--
5+00S 2+00E	201	15	<10	--	--	--	--
5+00S 2+25E	201	12	<10	--	--	--	--
5+00S 2+50E	201	11	40	--	--	--	--
5+00S 2+75E	201	10	<10	--	--	--	--
5+00S 3+00E	201	10	<10	--	--	--	--
5+00S 3+25E	201	7	<10	--	--	--	--
5+00S 3+50E	201	19	<10	--	--	--	--
5+00S 3+75E	201	16	<10	--	--	--	--
5+00S 4+00E	201	14	<10	--	--	--	--



MEMBER  
CANADIAN TESTING  
ASSOCIATION

Certified by *Hart Bichler*.....



# CHEMEX LABS LTD.

212 BROOKSBANK AVE.  
NORTH VANCOUVER, B.C.  
CANADA V7J 2C1

• ANALYTICAL CHEMISTS

• GEOCHEMISTS

• REGISTERED ASSAYERS

TELEPHONE: (604) 984-0221

TELEX: 043-52597

## CERTIFICATE OF ANALYSIS

TO : NEVIN SACLIER-BROWN GOODBRAND LTD.,

401 - 134 ABBOTT ST.  
VANCOUVER, B.C.  
V6B 2K4

CERT. # : A8315229-004-A  
INVOICE # : I8315229  
DATE : 6-OCT-83  
P.C. # : NONE  
CONNORS JV

ATTN: BRIAN FAIRBANK

Sample description	Prep code	AS ppm	AU-AA ppb				
5+00S 4+25E	201	9	10	--	--	--	--
5+00S 4+50E	201	9	<10	--	--	--	--
5+00S 4+75E	201	12	<10	--	--	--	--
5+00S 5+00E	201	15	<10	--	--	--	--
5+00S 5+25E	201	11	<10	--	--	--	--
5+00S 0+00W	201	11	<10	--	--	--	--
5+00S 0+25W	201	19	60	--	--	--	--
5+00S 0+50W	201	11	20	--	--	--	--
5+00S 0+75W	201	20	30	--	--	--	--
5+00S 1+00W	201	14	<10	--	--	--	--
5+00S 1+25W	201	7	60	--	--	--	--
5+00S 1+50W	201	14	20	--	--	--	--
5+00S 1+75W	201	12	130	--	--	--	--
5+00S 2+00W	201	12	10	--	--	--	--
5+00S 2+25W	201	14	<10	--	--	--	--
5+00S 2+50W	201	23	20	--	--	--	--
5+00S 2+75W	201	33	20	--	--	--	--
5+00S 3+00W	201	25	<10	--	--	--	--
5+00S 3+25W	201	38	<10	--	--	--	--
5+00S 3+50W	201	17	<10	--	--	--	--
5+00S 3+75W	201	14	10	--	--	--	--
5+00S 4+00W	201	17	10	--	--	--	--
5+00S 4+25W	201	9	10	--	--	--	--
5+00S 4+50W	201	7	<10	--	--	--	--
5+00S 4+75W	201	16	<10	--	--	--	--
5+00S 5+00W	201	6	<10	--	--	--	--
6+00S 0+25E	201	6	20	--	--	--	--
6+00S 0+50E	201	9	<10	--	--	--	--
6+00S 0+75E	201	7	<10	--	--	--	--
6+00S 1+00E	201	7	10	--	--	--	--
6+00S 1+25E	201	10	<10	--	--	--	--
6+00S 1+50E	201	7	<10	--	--	--	--
6+00S 1+75E	201	6	<10	--	--	--	--
6+00S 2+00E	201	27	<10	--	--	--	--
6+00S 2+25E	201	14	<10	--	--	--	--
6+00S 2+50E	201	19	<10	--	--	--	--
6+00S 2+75E	201	19	10	--	--	--	--
6+00S 3+00E	201	11	<10	--	--	--	--
6+00S 0+00W	201	7	<10	--	--	--	--
6+00S 0+25W	201	7	10	--	--	--	--

*Hart Buchler*

Certified by .....





# CHEMEX LABS LTD.

212 BROOKSBANK AVE.  
NORTH VANCOUVER, B.C.  
CANADA V7J 2C1  
TELEPHONE: (604) 984-0221  
TELEX: 043-52597

• ANALYTICAL CHEMISTS • GEOCHEMISTS • REGISTERED ASSAYERS

## CERTIFICATE OF ANALYSIS

TO : NEVIN SADLIER-BRCWN GOODBRAND LTD.,

401 - 134 ABBOTT ST.  
VANCOUVER, B.C.  
V6B 2K4

CERT. # : A8315229-005-1  
INVOICE # : I8315229  
DATE : 6-OCT-83  
P.O. # : NONE  
CCNNCRS JV

ATTN: BRIAN FAIRBANK

Sample description	Prep code	AS ppm	AU-AA ppb				
6+00S 0+50W	201	12	10	--	--	--	--
6+00S 0+75W	201	9	<10	--	--	--	--
6+00S 1+00W	201	19	20	--	--	--	--
6+00S 1+25W	201	12	40	--	--	--	--
6+00S 1+50W	201	14	10	--	--	--	--
6+00S 1+75W	201	6	20	--	--	--	--
6+00S 2+00W	201	19	<10	--	--	--	--
6+00S 2+25W	201	14	30	--	--	--	--
6+00S 2+50W	201	29	200	--	--	--	--
6+00S 2+75W	201	59	160	--	--	--	--
6+00S 3+00W	201	22	20	--	--	--	--
6+00S 3+25W	201	16	<10	--	--	--	--
6+00S 3+50W	201	12	10	--	--	--	--
6+00S 3+75W	201	9	<10	--	--	--	--
6+00S 4+00W	201	15	<10	--	--	--	--
6+00S 4+25W	201	11	10	--	--	--	--
6+00S 4+50W	201	23	<10	--	--	--	--
6+00S 4+75W	201	6	<10	--	--	--	--
6+00S 5+00W	201	11	<10	--	--	--	--
SILT SAMPLE	201	20	90	--	--	--	--



Certified by *Hart Bickler*



**Appendix C**  
**Itemized Cost Statement**

---

---

---

Itemized Cost StatementLabour

J. Reader, 20.5 days @ \$256.76/day	\$ 5,263.58
B. Swintz, 13 days @ \$232.69/day	3,024.97
K. Syrja, 11 days @ \$141.27/day	1,553.97
G. Greer, 10 days @ \$126.00/day	1,260.00
J. Contini, 10 days @ \$126.00/day	1,260.00
G. Robertson, 9 days @ \$126.00/day	1,134.00
B. Fairbank, 24.5 hours @ \$45.00/hr	1,102.50
D. Goodbrand, 1 days @ \$416.00/day	416.00
T. Sadlier-Brown, 1.5 hours @ \$52.00/hr	78.00
Anginel Resources Ltd. (P. Santos) 2.3 days @ \$200/day	<u>460.00</u>
Sub Total	<u>\$15,553.02</u>

Disbursements

Qualifying Report by Anginel Resources Ltd.	\$ 4,753.76
Vehicle Rental 19 days @ \$62.55/day	1,188.45
Travel, meals, accommodation 80.5 MD @ \$25.95/man-day	2,088.97
Equipment Rental (VLF, magnetometer, chainsaw, etc.)	1,353.91
Field Supplies	442.05
Assaying Costs	5,378.95
Drafting and Reporting	<u>2,921.17</u>
Sub Total	<u>18,127.26</u>
GRAND TOTAL	<u>\$33,680.28</u>

**Appendix D**  
**Magnetometer Specifications**

---

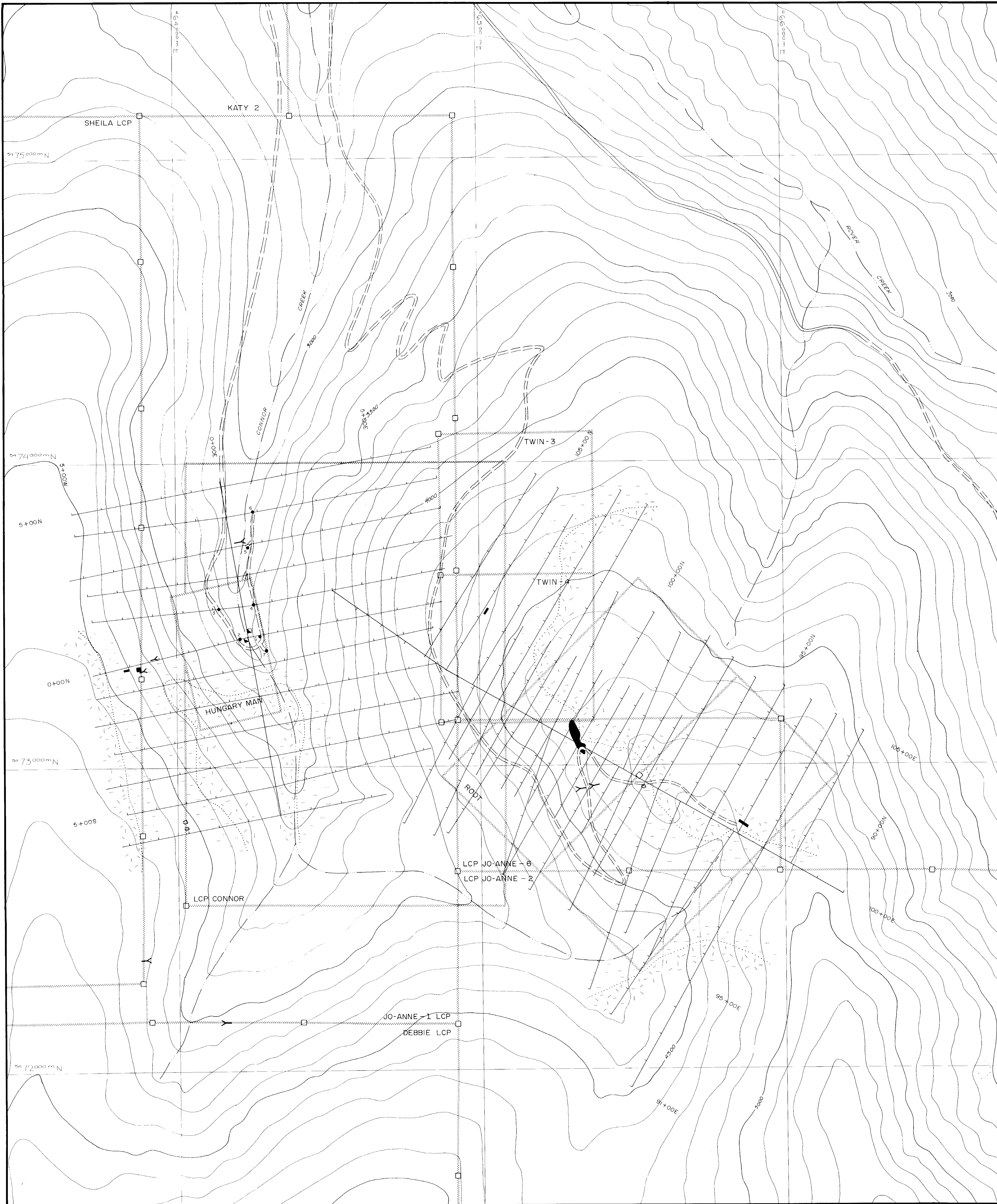
---

---

McPhar GP-81 Proton Magnetometer

SPECIFICATIONS

<u>Sensitivity</u>	:	1 gamma
<u>Range</u>	:	20,000 to 100,000 gammas
<u>Operating Temperature</u>	:	-30°C to +55°C
<u>Absolute Accuracy</u>	:	±1 gamma over temperature range
<u>Sensor</u>	:	Omni-directional, noise cancelling toroidal coil electrostatically balanced for minimum noise pick-up.
<u>Readout</u>	:	3.5 seconds total - by one push of button, continuous if button held depressed.
<u>Display</u>	:	LCD 5 digit, 2 status indicator lights for polarization and precession signal.
<u>Dimensions</u>	:	Console : 7 x 13.7 x 19 cm Sensor : 10.5 x 12.7 cm, cylinder Staff : 1.5 M extended
<u>Weight</u>	:	Console : 1.4 kg (including batteries) Sensor & Cable : 2.0 kg Aluminum Staff : 0.45 kg
<u>Power Supply</u>	:	Standard : 12 internally mounted alkaline "C" cells providing over 10,000 readings @ 25°C.
<u>Battery Indicator</u>	:	A miniature meter monitors battery for checking performance.



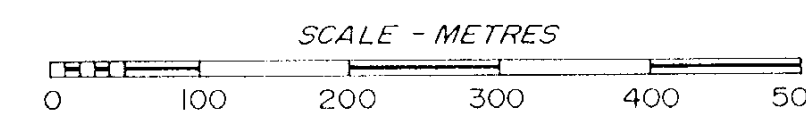
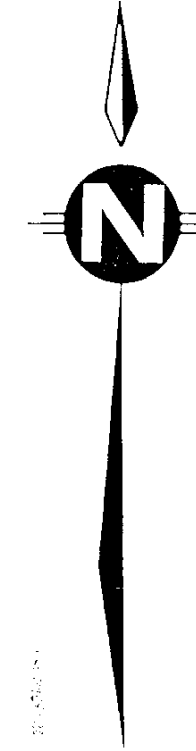
LEGEND

LITHOLOGIES

- NELSON FORMATION
- HALL FORMATION (SELISE FORMATION)

STRUCTURES

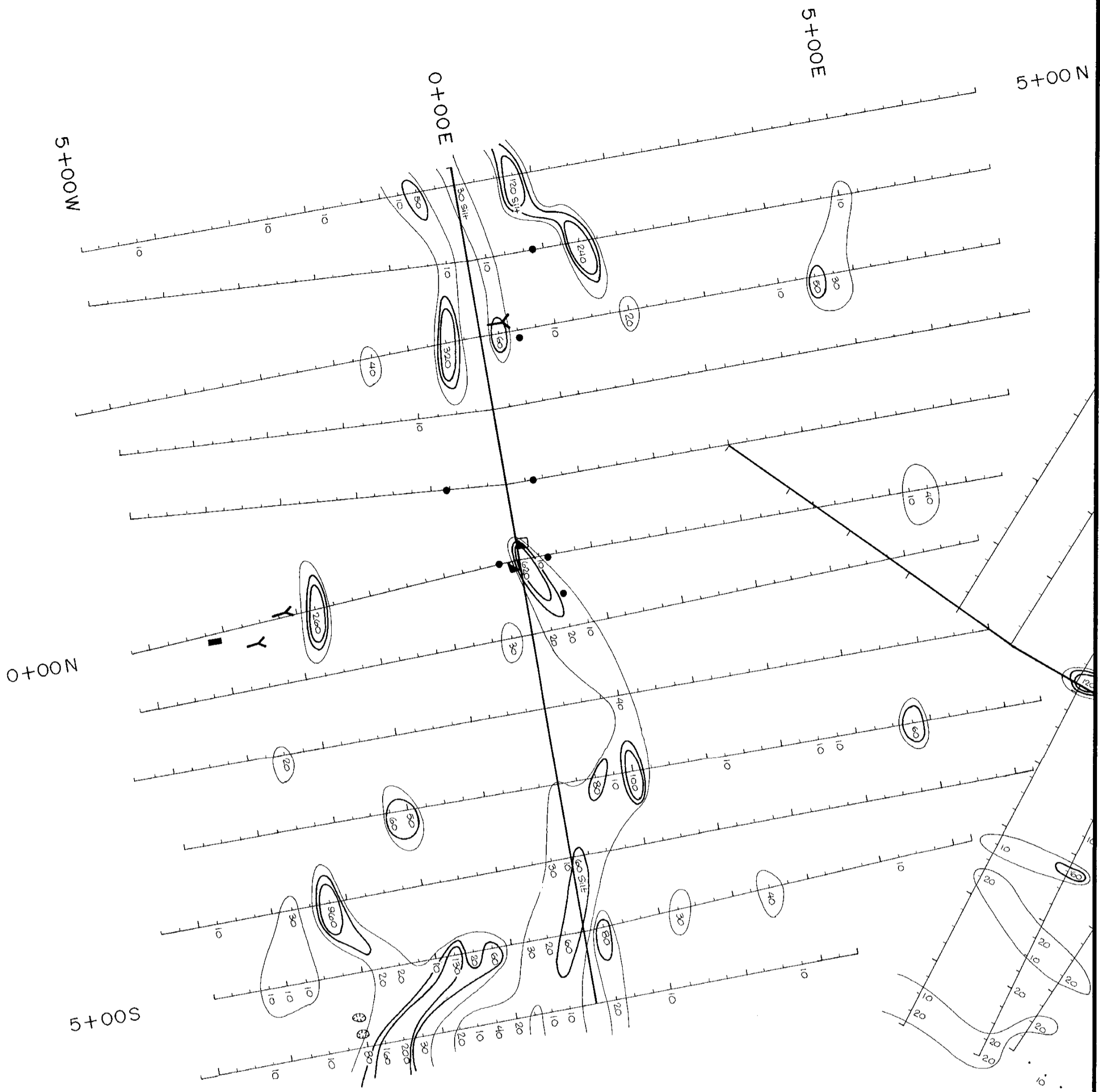
- Assumed geologic contact
- 100' contour interval
- Creek
- Roads
- Trench
- Pit
- Shaft
- Adit
- Diamond drill hole (Cominco, 1980)
- Cabin
- Legal corner post
- Claim boundaries
- Survey grid



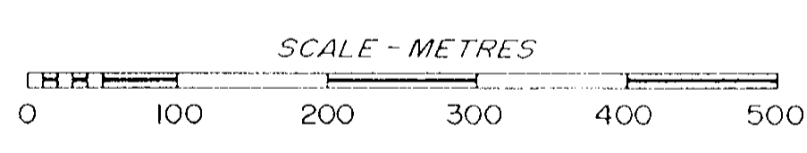
GEOLOGICAL BRANCH ASSESSMENT REPORT

**12,082**

NORAMEX MINERALS INC. / WAYBO RESOURCES INC.  
 CONNOR GOLD PROPERTY  
 PROPERTY GEOLOGY AND  
 GRID MAP  
 NELSON M.D., B.C. NTS MAP 82F/6  
 FIGURE 4 SCALE 1:5000  
 NEVIN SADLER-BROWN GOODBRAND LTD.  
 FEBRUARY 1984



**J. F. Reader**  
 Professional Engineer  
 License No. 12082  
*Wayne L. Melrose*  
 Assistant Geologist

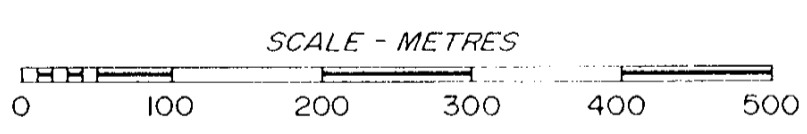
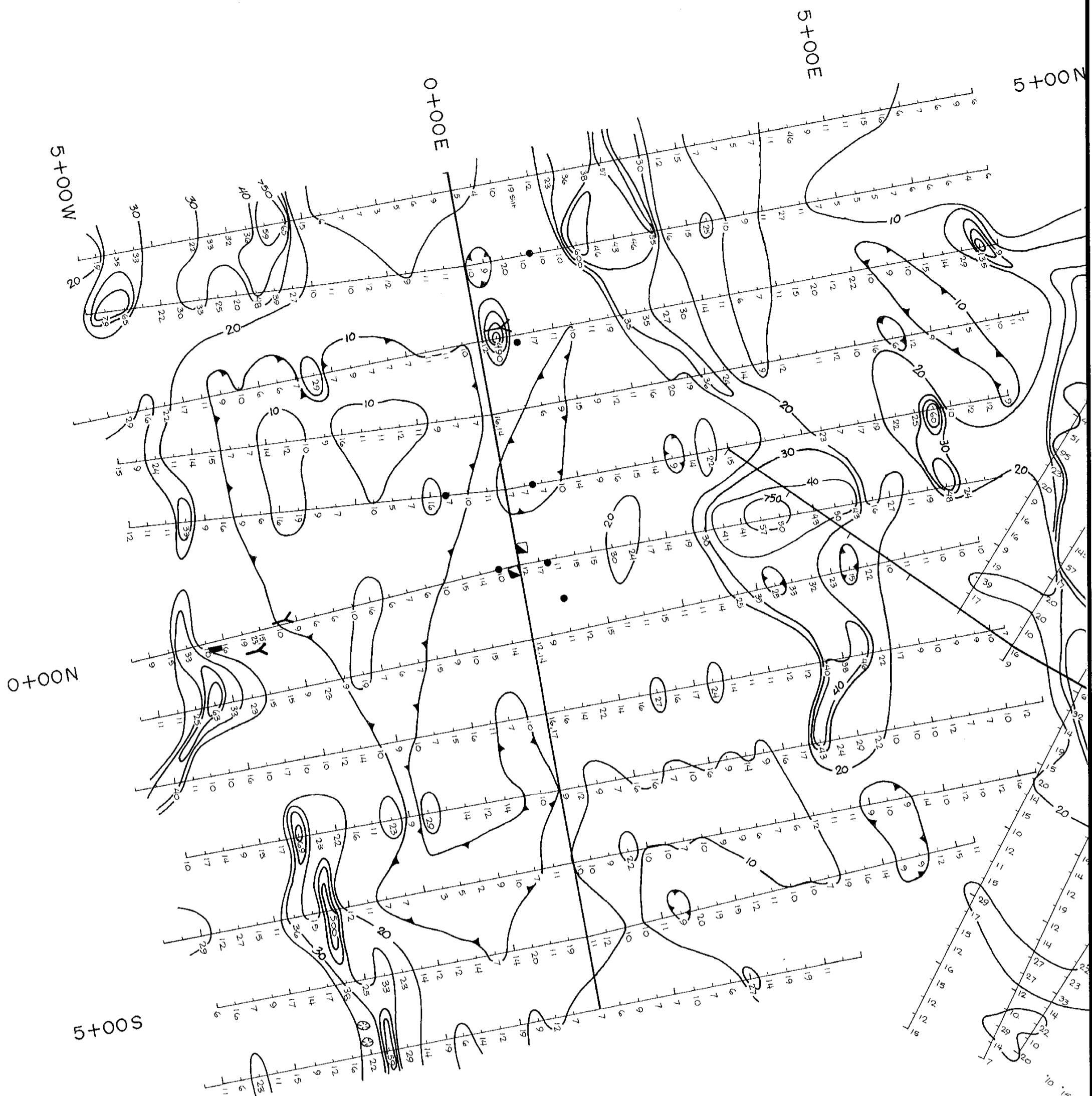


**GEOLOGICAL BRANCH  
ASSESSMENT REPORT**

**12,082**

- |                                      |                         |
|--------------------------------------|-------------------------|
| <b>LEGEND</b>                        | <b>GOLD</b>             |
| — Trench                             | 100 ppb                 |
| ⊙ Pit                                | 50 ppb                  |
| ■ Shaft                              | Detection limit <10 ppb |
| ↘ Adit                               |                         |
| ● Diamond drill hole (Cominco, 1980) |                         |

NORAMEX MINERALS INC./WAYBO RESOURCES INC.	
CONNOR GOLD PROPERTY	
GOLD (ppb) SOIL GEOCHEMISTRY	
NELSON M.D., B.C.	NTS MAP 82F/6
FIGURE 5	SCALE 1:5000
NEVIN SADLER-BROWN GOODBRAND LTD. FEBRUARY 1984	



This is to accompany a report entitled:  
 "GEOCHEMICAL AND GEOPHYSICAL REPORT ON  
 THE ROYAL COLUMBIAN PROPERTY"  
 dated 1984 prepared by:

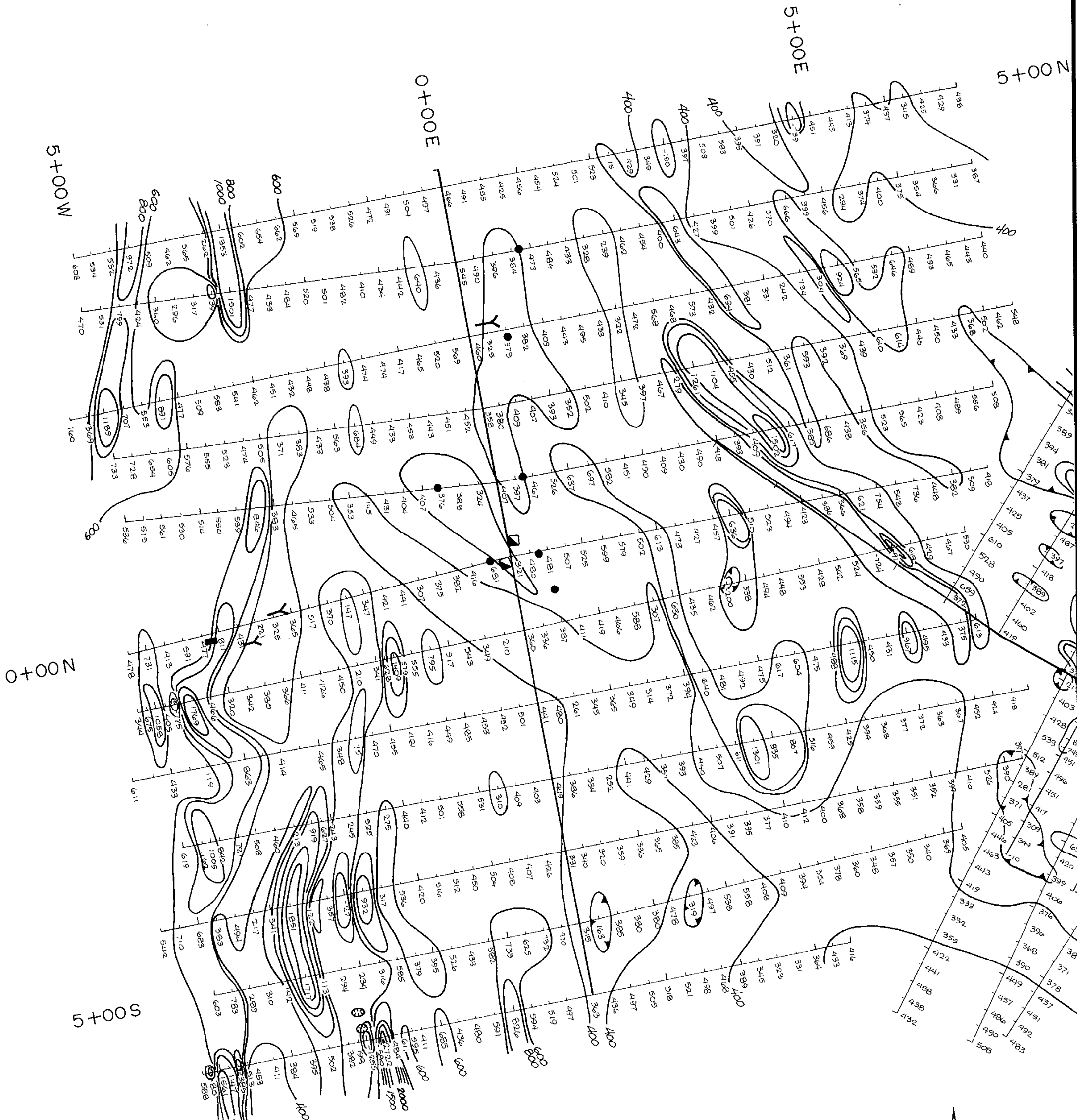
*John F. Reader*  
 Professional Engineer  
 Registered Professional Engineer  
 British Columbia  
 No. 12345  
*Dwight L. McPherson*  
 Geologist

**GEOLOGICAL BRANCH  
 ASSESSMENT REPORT**

**12,082**

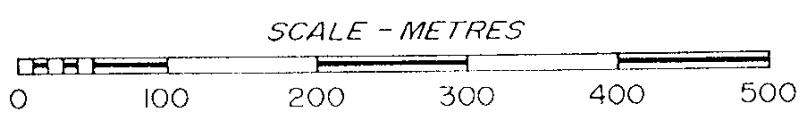
LEGEND	ARSENIC
Trench	>50 ppm
Pit	40 ppm
Shaft	30 ppm
Adit	20 ppm
Diamond drill hole (Cominco, 1980)	10 ppm

NORAMEX MINERALS INC./WAYBO RESOURCES INC.	
CONNOR GOLD PROPERTY	
ARSENIC (ppm) SOIL GEOCHEMISTRY	
NELSON M.D., B.C.	NTS MAP 82F/6
FIGURE 6	SCALE 1:5000
NEVIN SADLIER-BROWN GOODBRAND LTD. FEBRUARY 1984	



This is to accompany a report entitled:  
 "GEOLOGICAL AND GEOPHYSICAL REPORT ON  
 THE WAYBO PROPERTY,  
 DISTRICT OF COLUMBIA, D.C."

*J. F. Reader*  
 ENGINEER  
*Wayne L. McRose*  
 Geologist



**GEOLOGICAL BRANCH  
 ASSESSMENT REPORT**

**12,082**

**LEGEND**

- Trenches
- Pit
- ▣ Shaft
- Y Adit
- Diamond drill hole (Cominco, 1980)

**MAGNETOMETER SURVEY**

- 2000 gammas
  - 1500 gammas
  - 1000 gammas
  - 800 gammas
  - 600 gammas
  - 400 gammas
  - 200 gammas
  - <0 gammas (0 = 57000 gammas)
- Instrument: McPhar GP-81 Proton  
 Precession Magnetometer

NORAMEX MINERALS INC./WAYBO RESOURCES INC.	
CONNOR GOLD PROPERTY	
<b>MAGNETOMETER SURVEY</b>	
NELSON M.D., B.C.	NTS MAP 82F/6
FIGURE 7	SCALE 1:5000
NEVIN SADLIER-BROWN GOODBRAND LTD. FEBRUARY 1984	