

84-#63-12100
2 of 2

GOVERNMENT

ASSESSMENT REPORT
ON
THE SILICA PROJECT
KAMLOOPS MINING DIVISION
NTS: 92I/11W
50°40'N, 121°21W

(2 of 2)



GEOLOGICAL BRANCH
ASSESSMENT REPORT

12,100
PART 2 OF 2

McElhenny Surveying & Engineering Ltd.
1166 Alberni Street, Vancouver B.C. Canada

PRELIMINARY RECONNAISSANCE TYPE MAPPING
Scale and elevation datum based on limited ground control resulting in good relative but uncertain absolute map accuracy.
Compiled from aerial photography from in 1982 at an approx. scale of 1:54,000.

Scale - 1:10,000
Contour Interval - 20 metres
Date - October, 1983
Job No. - 40084-0
Sheet No. - A

SELCO INC. EXPLORATION WESTERN CANADA

SILICA 10111
LITHO GEOCHEMICAL SAMPLE LOCATION MAP

DRAWN BY DG	DATE FEB. 1984	N.T.S.	PLAN
TRACED BY Z.J.W.	DATE FEB. 1984	92.1/1/W	MAP GC-1

2+00N
4+00N
6+00N



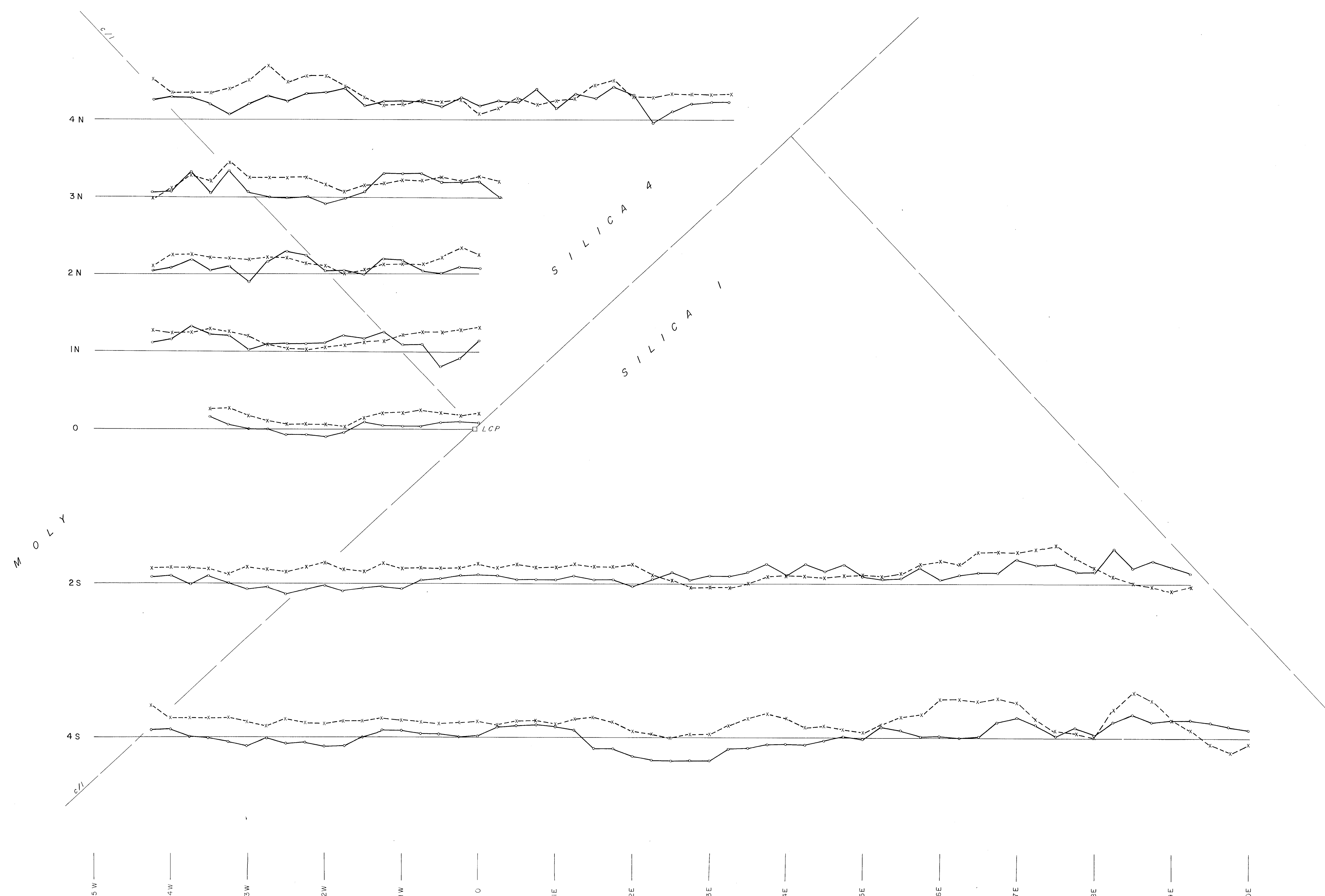
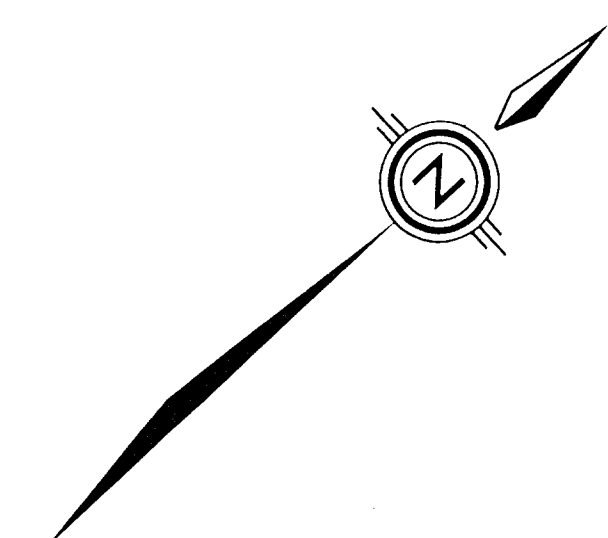
GEOLOGICAL BRANCH
ASSESSMENT REPORT

12,100

PART 2 OF 2

McElmhay Surveying & Engineering Ltd. 1166 Alberni Street, Vancouver, B.C. Canada		SELCO INC. EXPLORATION WESTERN CANADA	
PRELIMINARY RECONNAISSANCE TYPE MAPPING Scale and elevation datum based on limited ground control resulting in good relative but uncertain absolute map accuracy. Compiled from aerial photography flown in 1982 at an approx. scale of 1:54,000.			
Scale - 1:10,000	A	DRAWN BY	
Contour Interval - 20 metres	B	DATE	
Date - October, 1983	C	N.T.S.	
Job No. - 40084-0		PLAN	
Sheet No. - 8	SHEET INDEX	TRACED BY	MAP GC-2

65°



GEOLOGICAL BRANCH ASSESSMENT REPORT

12,100

PART 2 OF 2

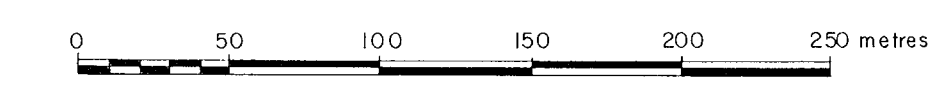
ELECTROMAGNETIC INSTRUMENT	
TYPE: MAX. MIN. II	
HORIZONTAL LOOP (Percent of Primary Field)	
Frequency: 444 HZ	
Cable Length: 150 METRES	
In Phase: ●—●—	Out of Phase: —●—●—
Conductor Width:	
Profile Scale: 1cm = 10%	

SELCO INC. EXPLORATION
WESTERN CANADA

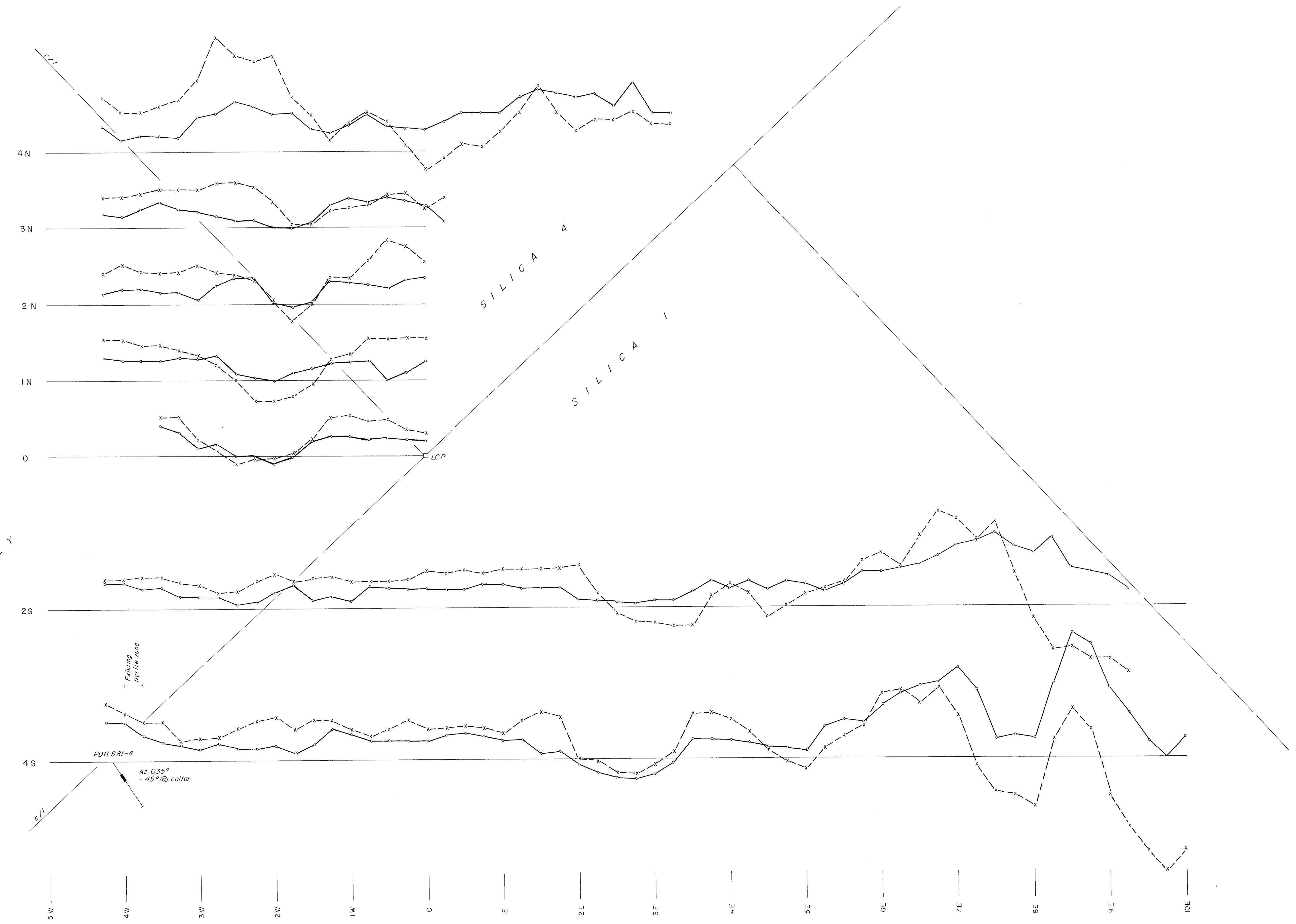
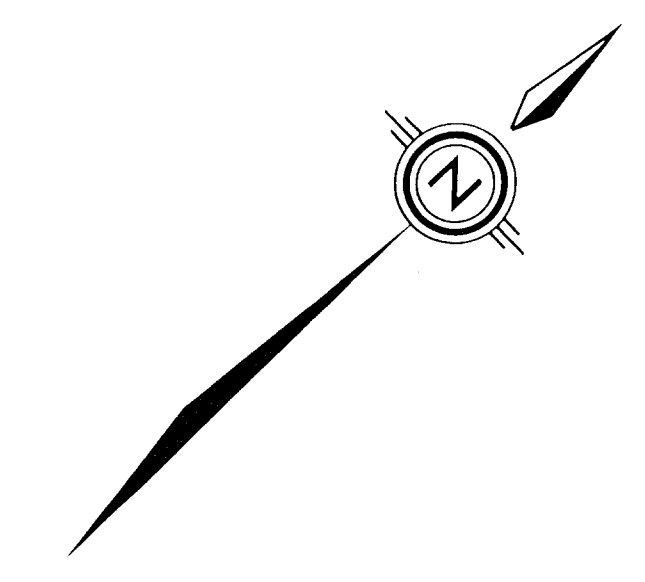
SILICA GROUP NORTH GRID HORIZONTAL LOOP

Scale 1: 2500

DRAWN BY A. WYNNE	DATE MAR. 1983.	N.T.S.	PLAN
TRACED BY J. S.	DATE APR. 1983.	.92 / I	GP-1



65°



GEOLOGICAL BRANCH
ASSESSMENT REPORT

12,100
PART 2 OF 2

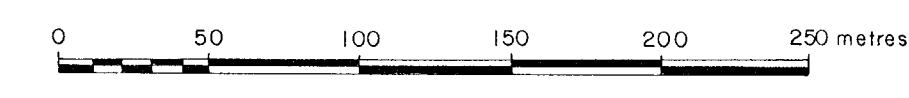
ELECTROMAGNETIC INSTRUMENT	
TYPE: MAX. MIN. II	
HORIZONTAL LOOP (Percent of Primary Field)	
Frequency: 1777 HZ	
Cable Length: 150 METRES	
In Phase: ●—●—●—	Out of Phase Quadrature: —●—●—●—
Conductor Width: <i>Wavy line symbol</i>	
Profile Scale: 1cm = 10% $\begin{matrix} +10 \\ 0 \\ -10 \end{matrix}$	

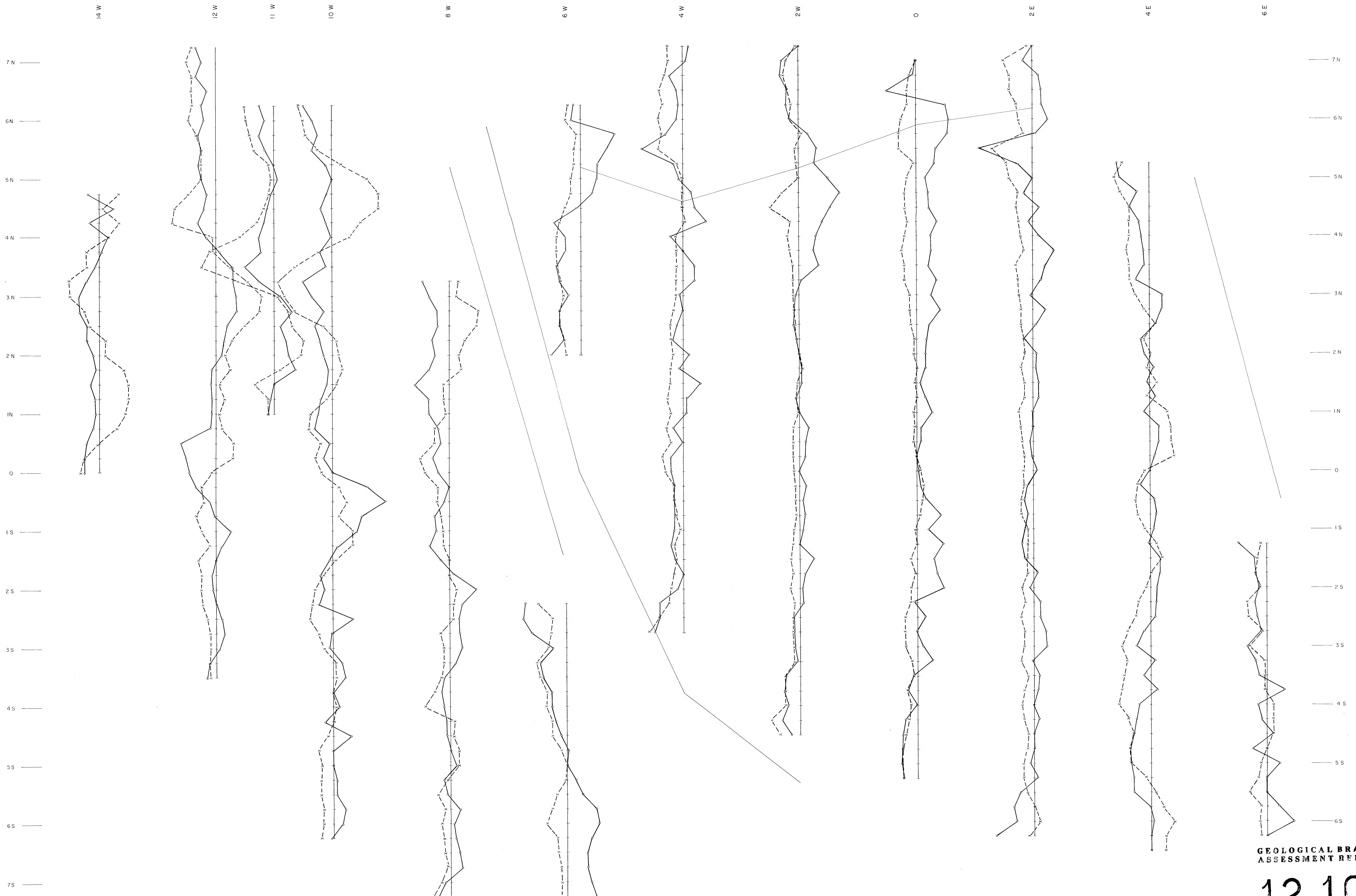
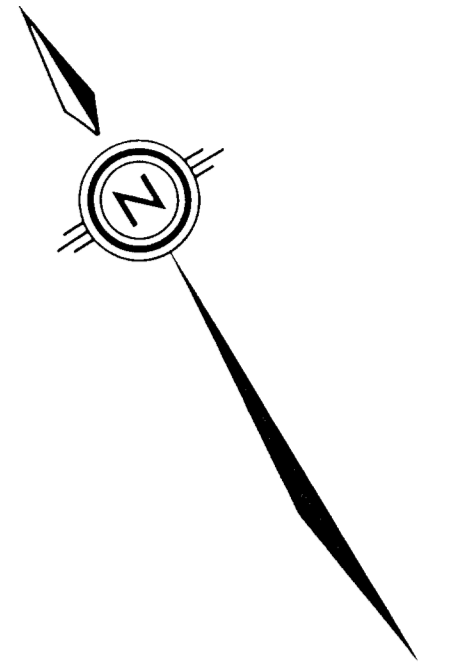
SELCO INC. EXPLORATION
WESTERN CANADA

SILICA GROUP
NORTH GRID
HORIZONTAL LOOP

Scale: 2500

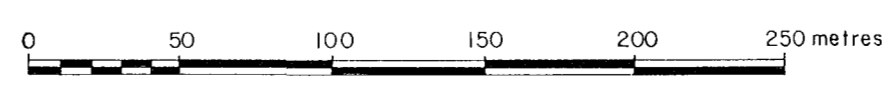
DRAWN BY A. WYNNE	DATE MAR. 1983.	N.T.S. 92/1	PLAN GP-2
TRACED BY J. S.	DATE APR. 1983.		





GEOLOGICAL BRANCH
ASSESSMENT REPORT
12,100 PART
2 OF 2

ELECTROMAGNETIC INSTRUMENT
 TYPE: MAX. MIN. II
HORIZONTAL LOOP (Percent of Primary Field)
 Frequency: 444 HZ
 Cable Length: 150 METRES
 In Phase: ●●●●●●●● Out of Phase: - - - - -
 Conductor Width: 222:.....
 Profile Scale: 1 cm = 10 %

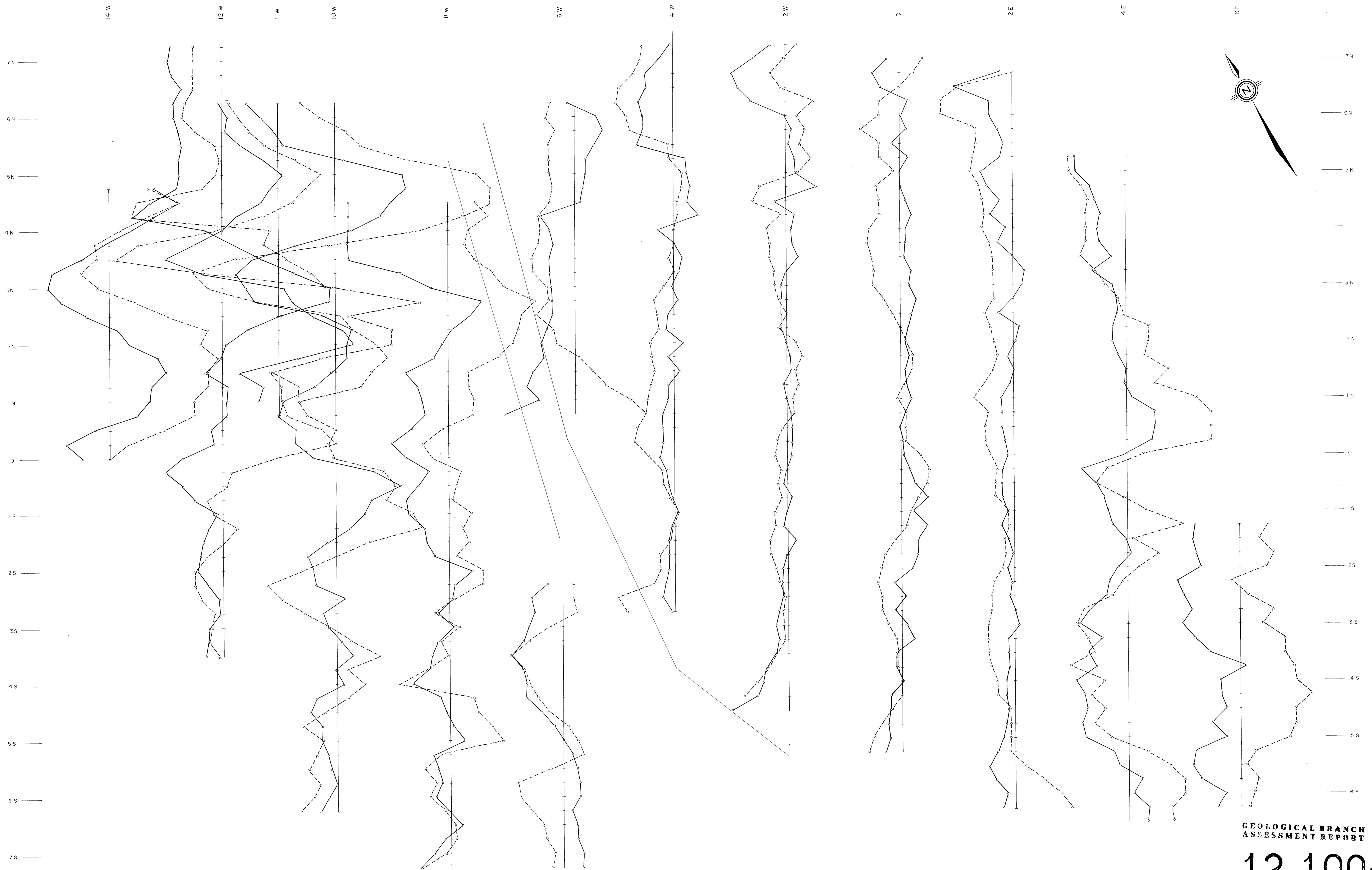


SELCO INC. EXPLORATION WESTERN CANADA

SILICA GROUP
SOUTH GRID
HORIZONTAL LOOP

Scale 1: 2 500

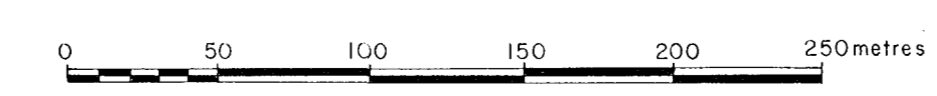
DRAWN BY A. WYNNIE	DATE MAR. 1983.	N.T.S.	PLAN
TRACED BY J.S.	DATE APR. 1983.	92/1	GP-3



GEOLOGICAL BRANCH
ASSESSMENT REPORT

12,100 PART 2 OF 2

ELECTROMAGNETIC INSTRUMENT
 TYPE: MAX. MIN. II
 HORIZONTAL LOOP (Percent of Primary Field)
 Frequency: 1777 HZ
 Cable Length: 150 METRES
 In Phase: —●— Out of Phase: - - - ● - - -
 Conductor Width: 22mm
 Profile Scale: 1cm = 10% $\frac{+10}{-10}$



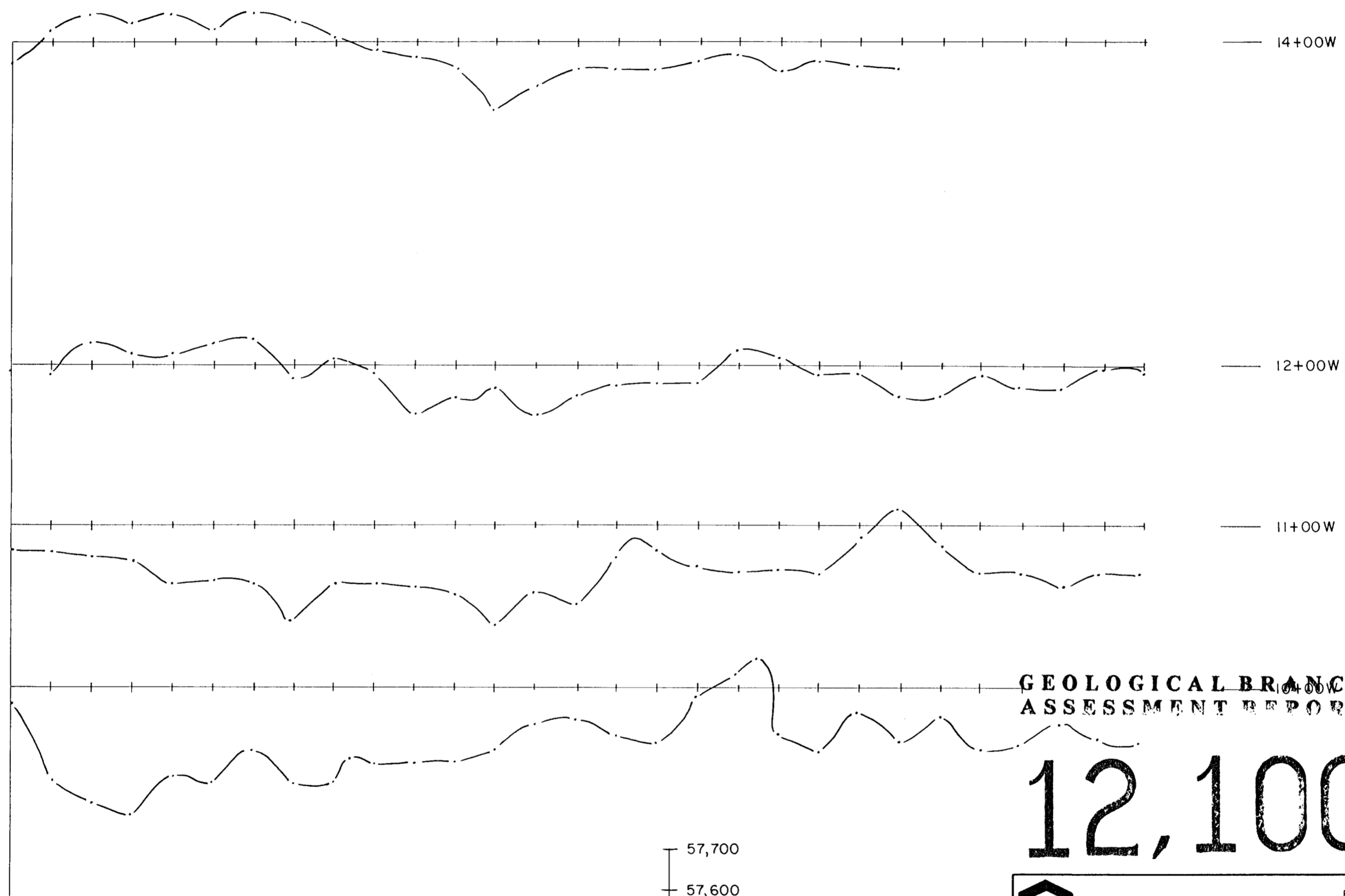
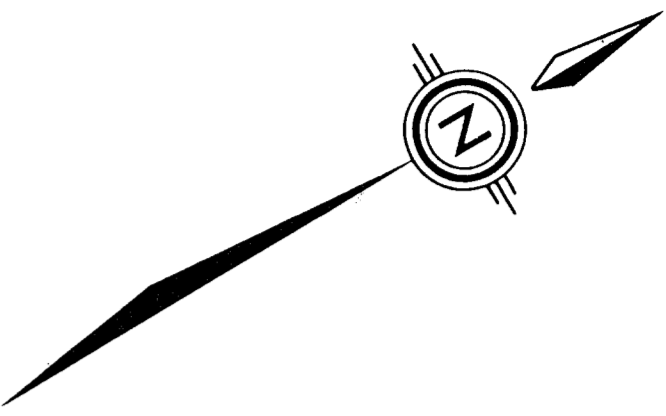
SELCO INC. EXPLORATION WESTERN CANADA

SILICA GROUP
SOUTH GRID
HORIZONTAL LOOP

Scale 1: 2500

DRAWN BY A. WYNNE	DATE MAR. 1983	N.T.S. 92/11	PI AM
TRACED BY J. S.	DATE APR. 1983		GP-4

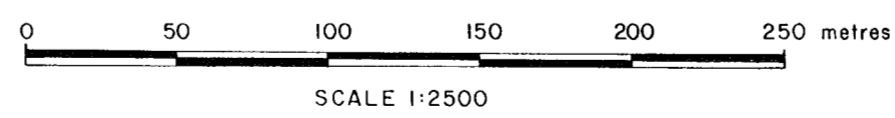
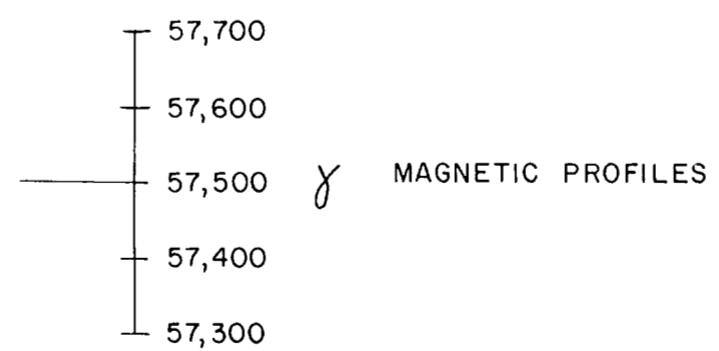
BL 0+00 1+00N 2+00N 3+00N 4+00N 5+00N 6+00N 7+00N



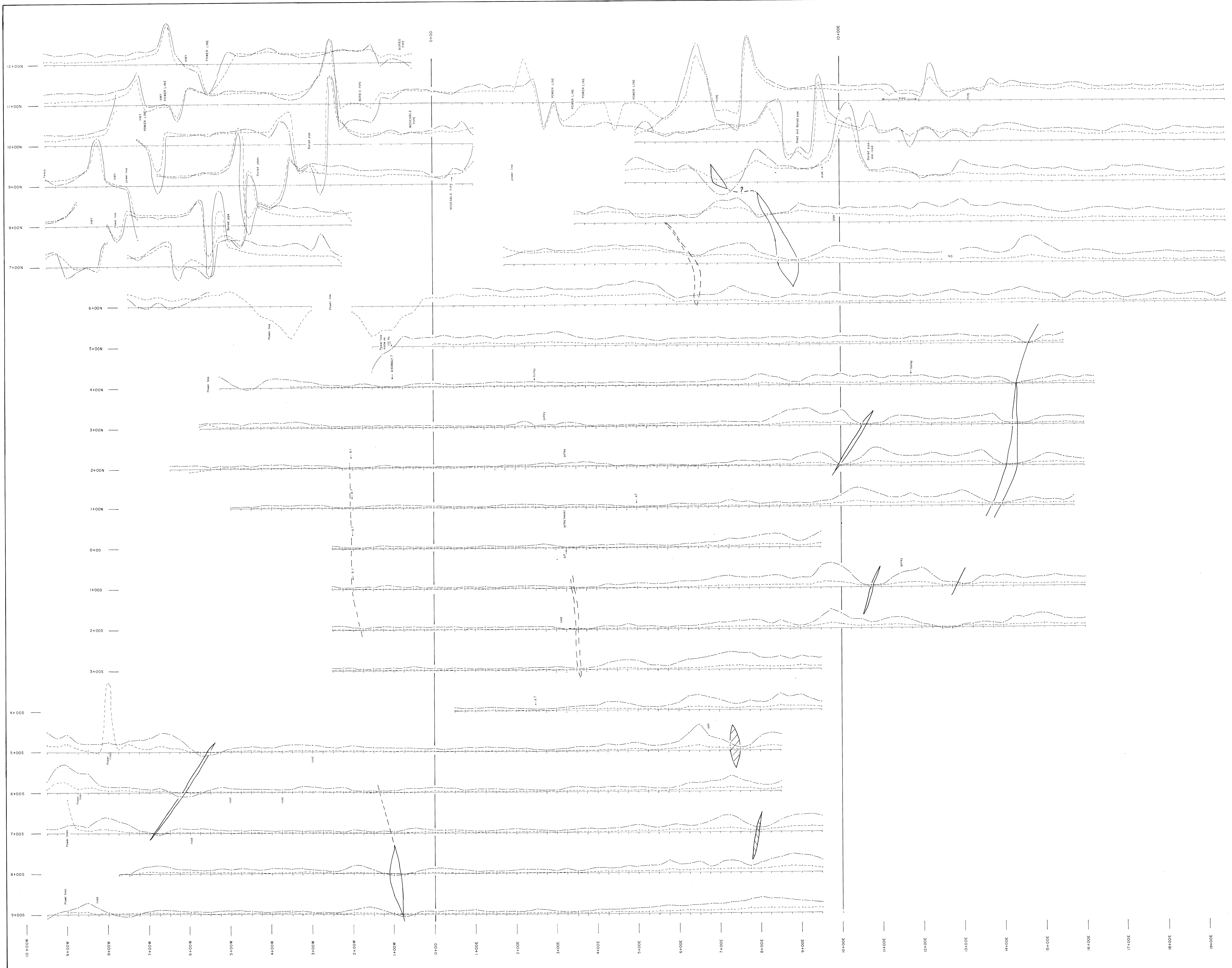
GEOLOGICAL BRANCH
ASSESSMENT REPORT

12,100

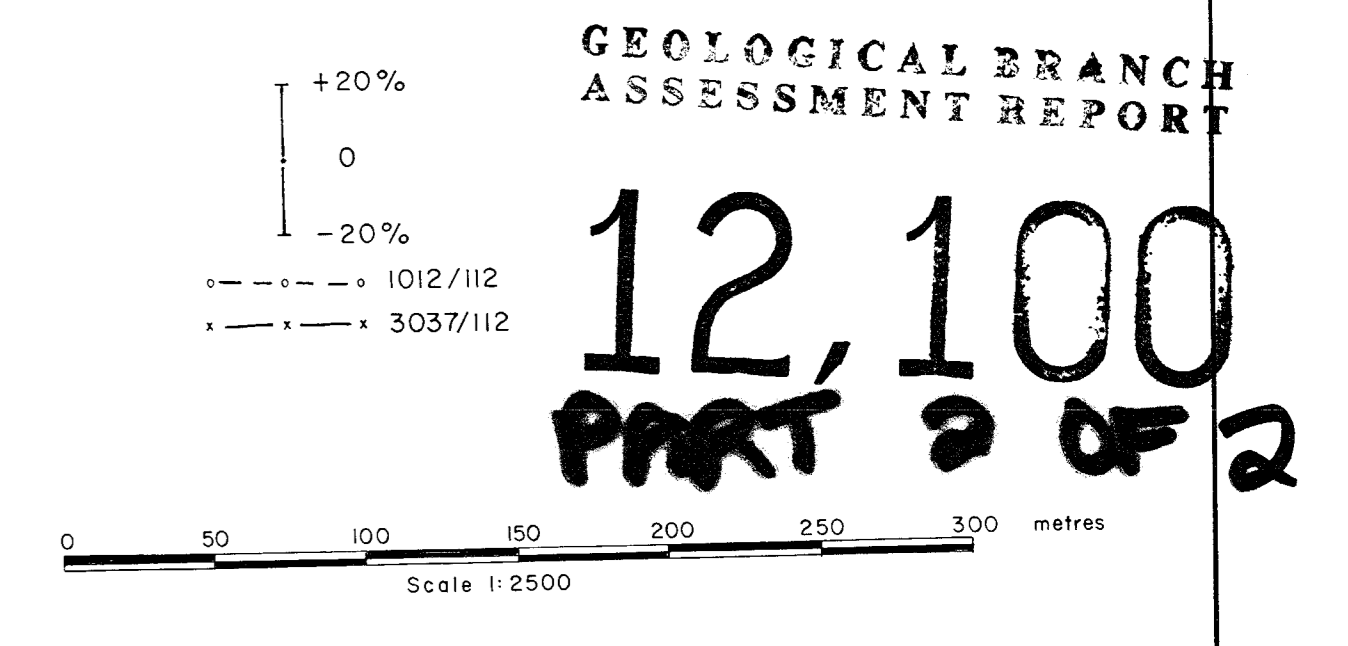
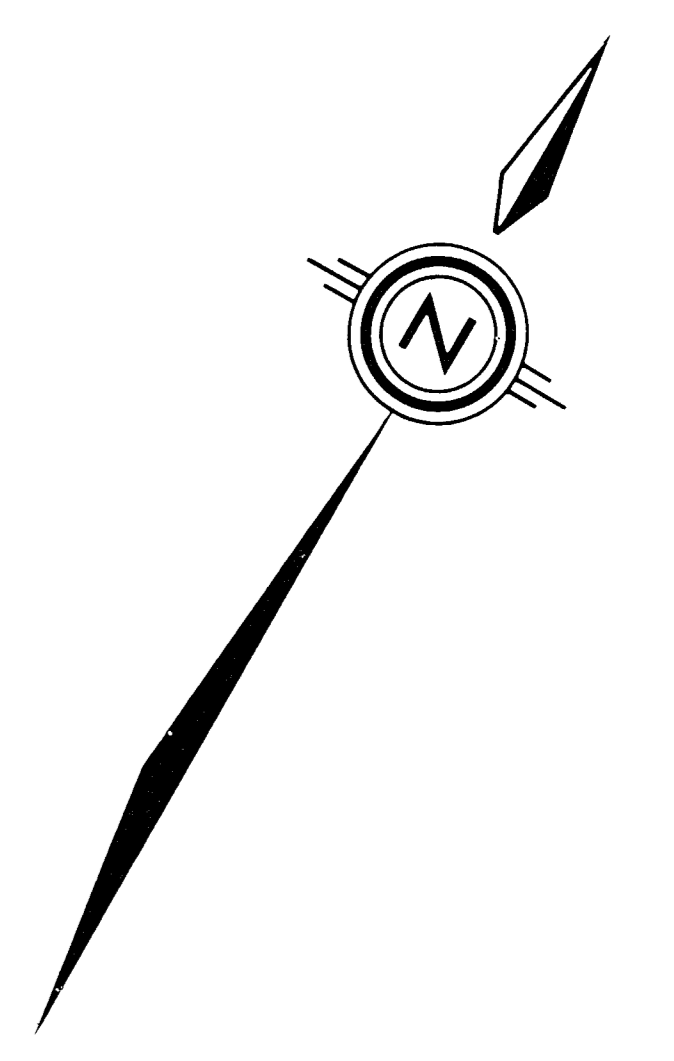
PART
2 OF 2



		EXPLORATION WESTERN CANADA	
<p>SILICA GROUP SOUTH GRID MAGNETIC PROFILES</p>			
DRAWN BY D. G.	DATE MAR., 1983	N.T.S.	PLAN
TRACED BY ZJW	DATE FEB., 1983	921/11W	GP-4a



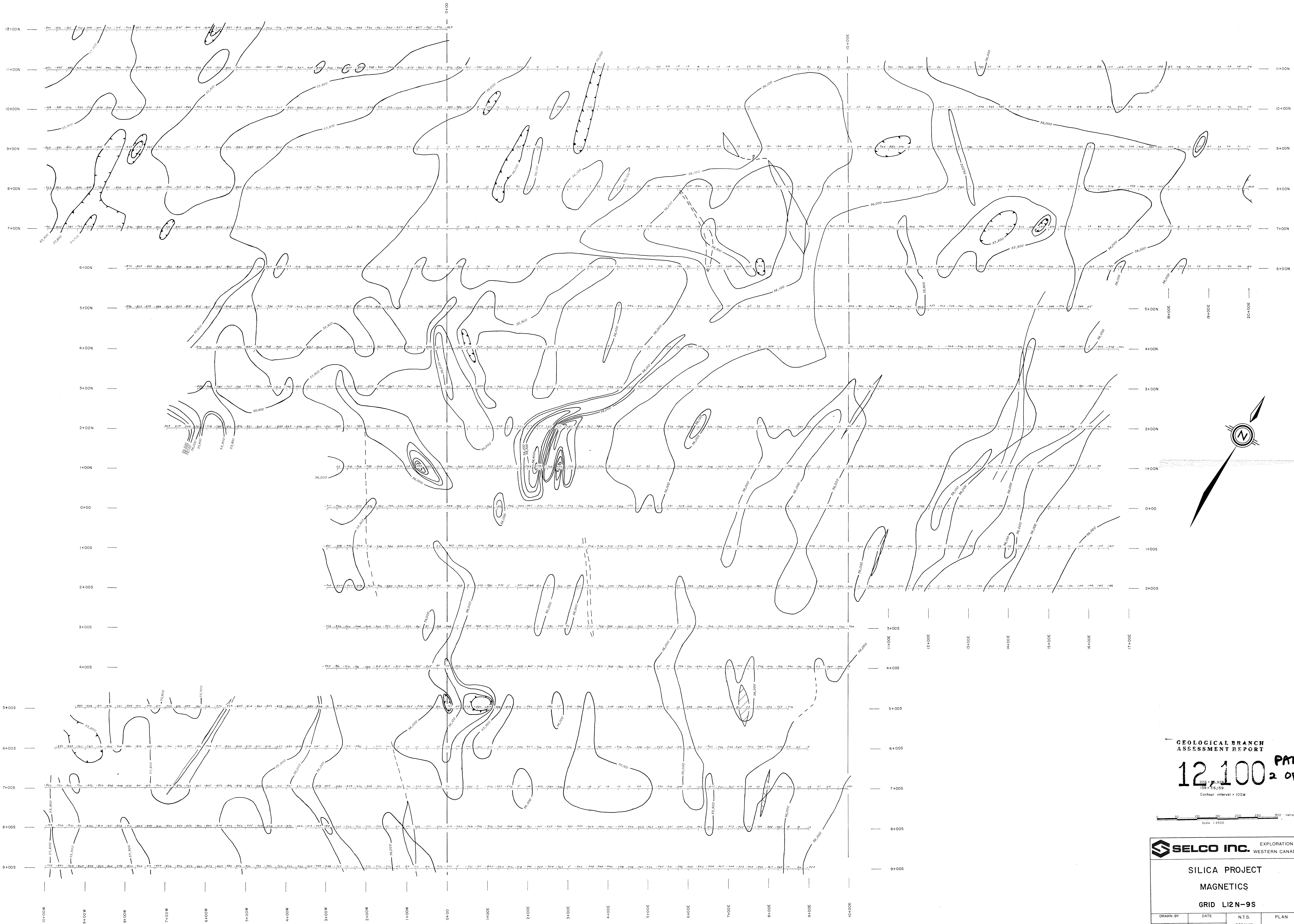
12+00N
11+00N
10+00N
9+00N
8+00N
7+00N
6+00N
5+00N
4+00N
3+00N
2+00N
1+00N
0+00
1+00S
2+00S
3+00S
4+00S
5+00S
6+00S
7+00S
8+00S
9+00S
10+00E
11+00E
12+00E
13+00E
14+00E
15+00E
16+00E
17+00E
18+00E
19+00E
20+00E



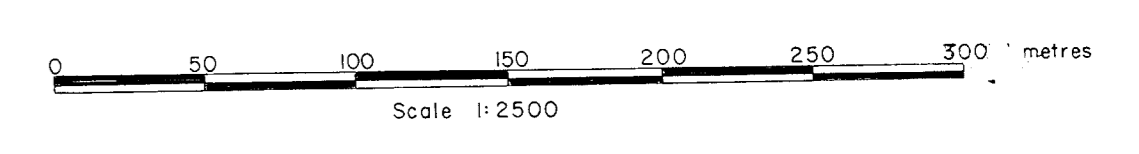
SELCO INC. EXPLORATION
WESTERN CANADA

SILICA PROJECT
ELECTROMAGNETICS
(Genie)
GRID L12N-9S

DRAWN BY	DATE	N.T.S.	PLAN
TRACED BY	DATE	92/1/11W	07-9
Z/W	JAN 1984		

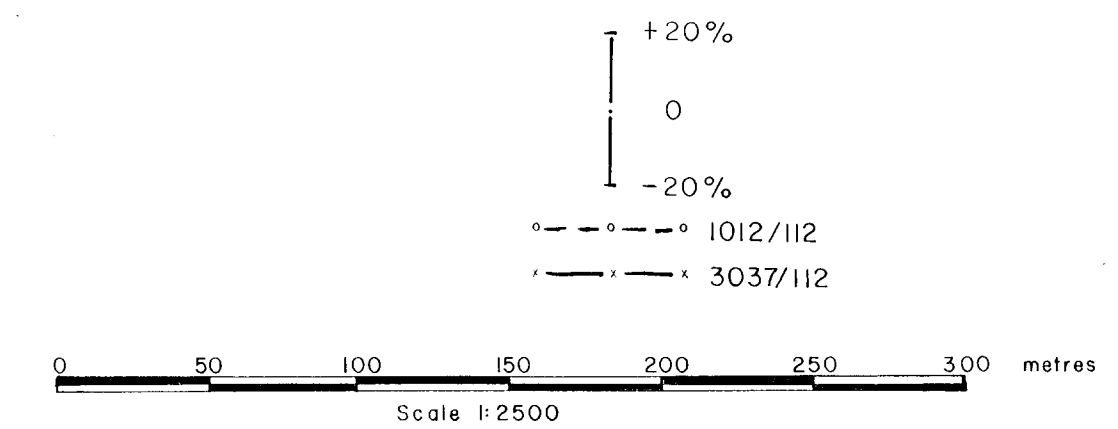
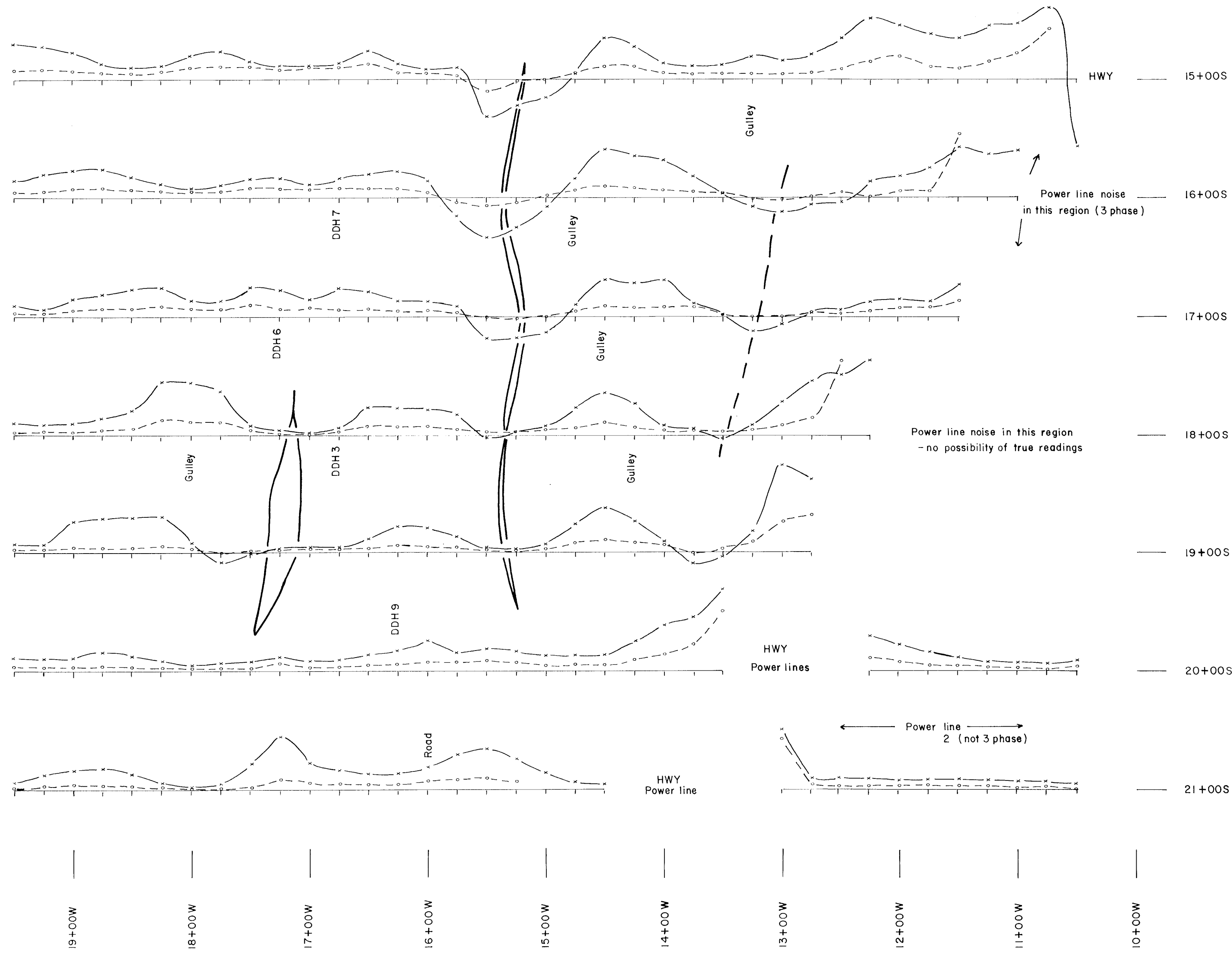
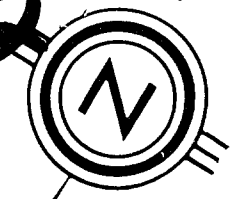


GEOLOGICAL BRANCH
ASSESSMENT REPORT
12,100 PART
2 OF 2
Contour interval = 100m



SELCO INC.		EXPLORATION WESTERN CANADA	
SILICA PROJECT			
MAGNETICS			
GRID L12N-9S			
DRAWN BY	DATE	N.T.S.	PLAN
TRACED BY ZJW	DATE JAN. 1984	921/11W	GP-10

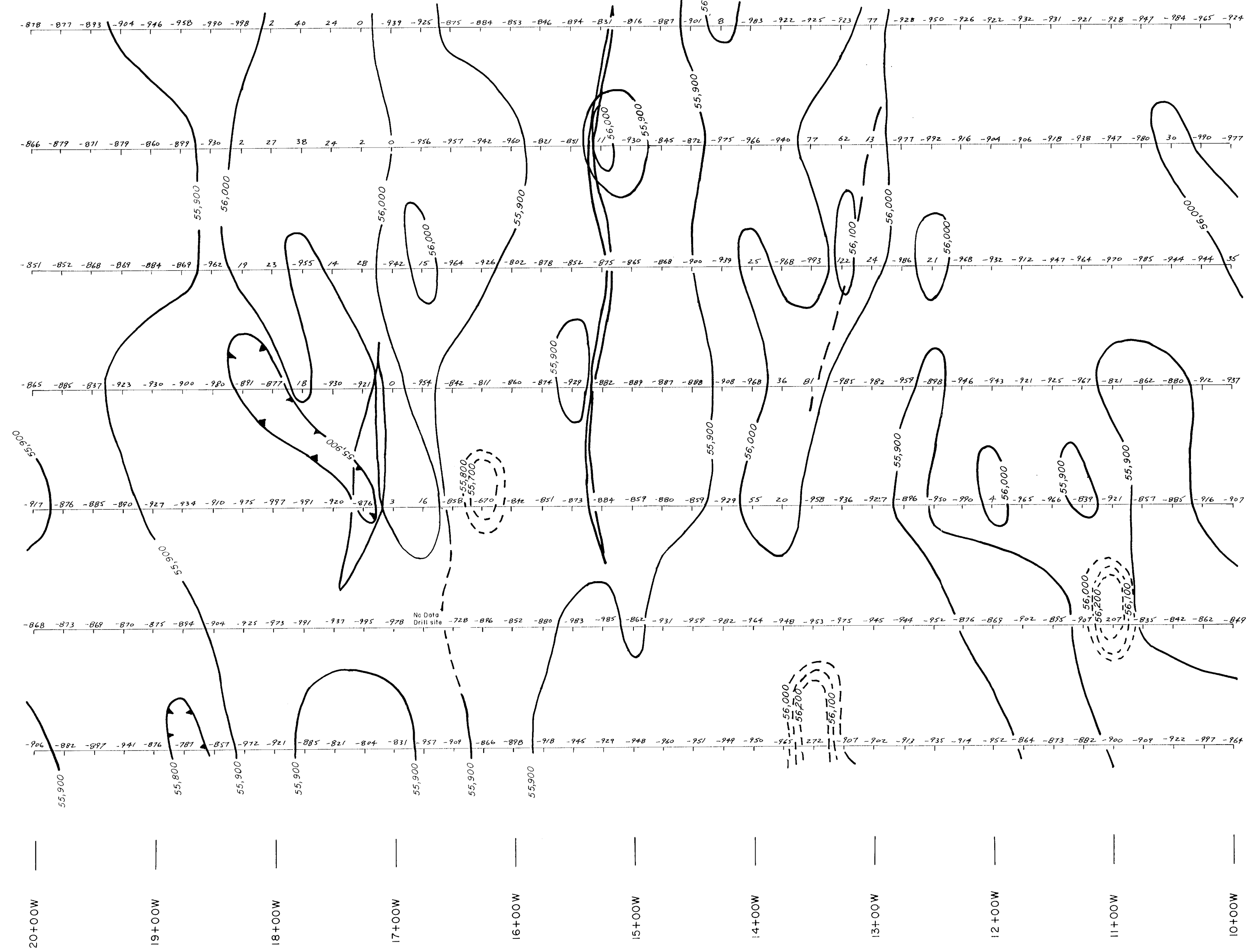
12,100
PART 2 OF 2



SELCO INC. EXPLORATION
WESTERN CANADA

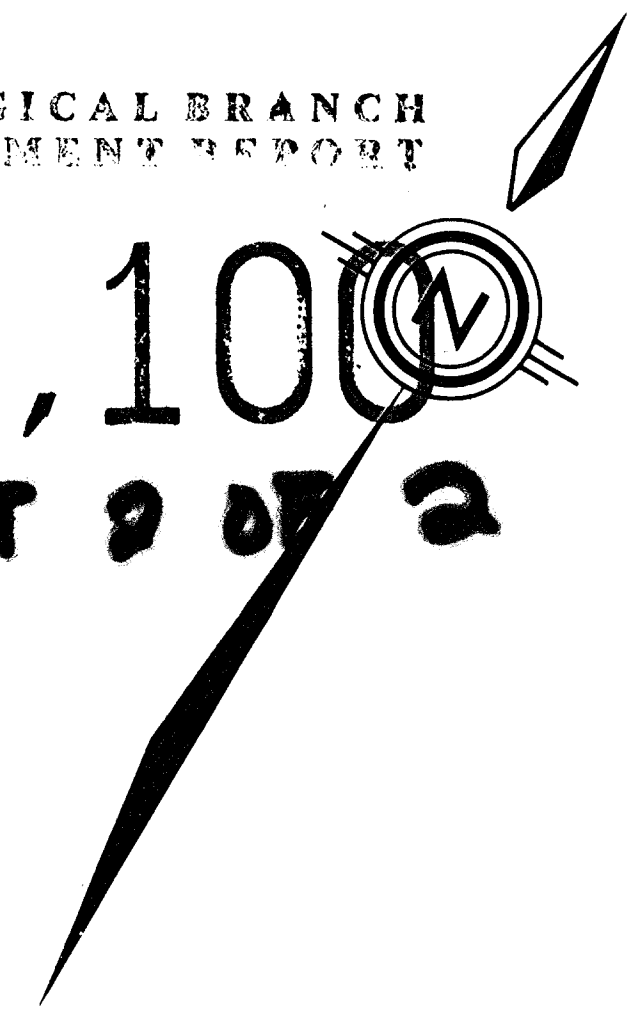
SILICA PROJECT
ELECTROMAGNETICS
(Genie)
GRID LI5S-2IS

DRAWN BY	DATE	N.T.S.	PLAN
TRACED BY Z.J.W.	DATE JAN. 1984	921/IIW	GP-11

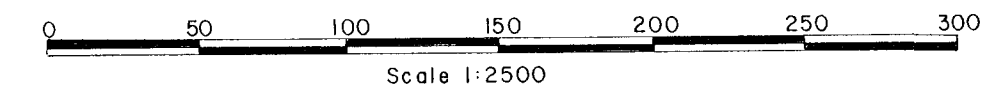



GEOLOGICAL BRANCH
ASSESSMENT REPORT

12,100
PART 2 OF 2



- 926 = 55,926
159 = 56,159
Contour interval = 1008



		EXPLORATION WESTERN CANADA	
<h2>SILICA PROJECT</h2> <h3>MAGNETICS</h3>			
<h4>GRID LI5S-2IS</h4>			
DRAWN BY	DATE	N.T.S.	PLAN
TRACED BY Z-J-W	DATE JAN. 1984	921/IIW	GP-12



**GEOLOGICAL BRANCH
ASSESSMENT REPORT**

12,100
PART
2 OF 2

Mc Elhoney Surveying & Engineering Ltd.
1166 Alberni Street, Vancouver B.C. Canada

PRELIMINARY RECONNAISSANCE TYPE MAPPING
Scale and elevation datum based on limited ground control resulting in good relative but uncertain absolute map accuracy.
Compiled from aerial photography flown in 1982 at an approx. scale of 1:54,000.

Scale - 1:10,000
Contour Interval - 20 metres
Date - October, 1985
Job No. - 40084-0
Sheet No. - A

SELCO INC. EXPLORATION
WESTERN CANADA

SILICA 10111

DRAWN BY	DATE	N.T.S.	PLAN
TRACED BY	DATE		MAP 6-1

SHEET INDEX



**GEOLOGICAL BRANCH
ASSESSMENT REPORT**

12,100
PART 2 OF 2

Mc Elhenny Surveying & Engineering Ltd
1166 Alberni Street, Vancouver B.C. Canada

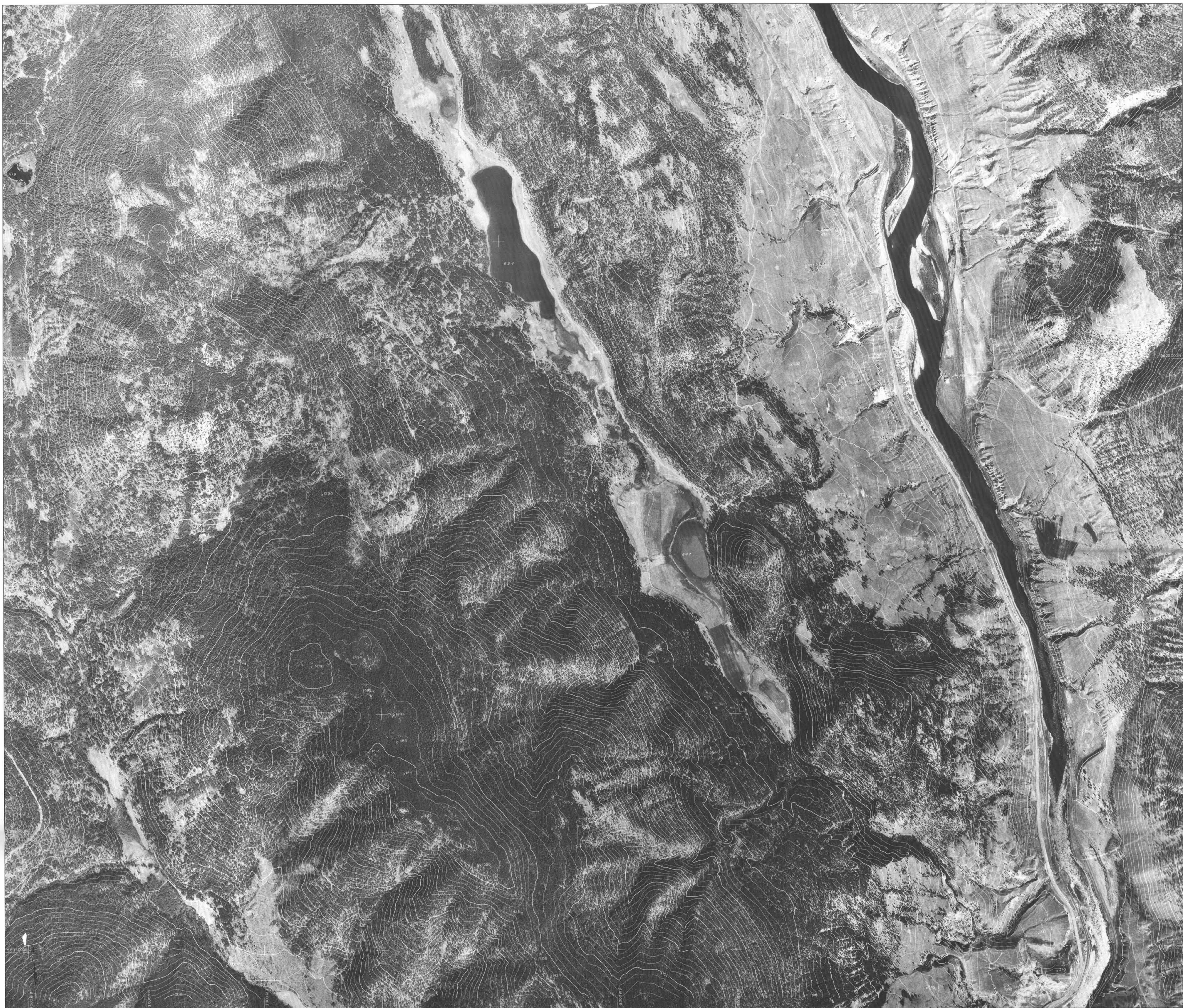
PRELIMINARY RECONNAISSANCE TYPE MAPPING
Scale and elevation datum based on limited ground control resulting in good relative but uncertain absolute map accuracy.
Compiled from aerial photography flown in 1982 at an approx. scale of 1:54,000.

Scale - 1:10,000	A
Contour Interval - 20 metres	B
Date - October, 1983	C
Job No. - 40084-0	
Sheet No. - B	

SELCO INC. EXPLORATION
WESTERN CANADA

SILICA 10111

DRAWN BY	DATE	N.T.S.	PLAN
TRACED BY	DATE		MAP S-2



GEOLOGICAL BRANCH
ASSESSMENT REPORT

12,100
PART 2 OF 2

	McElroy Surveying & Engineering Ltd 1166 Alberni Street, Vancouver, B.C. Canada		EXPLORATION WESTERN CANADA												
	PRELIMINARY RECONNAISSANCE TYPE MAPPING Scale and elevation datum based on limited ground control resulting in good relative but uncertain absolute map accuracy. Compiled from aerial photography flown in 1982 at an approx. scale of 1:50,000.		SILICA 10111												
Scale - 1:10,000 Contour Interval - 20 metres Date - October, 1983 Job No. - 40084-0 Sheet No. - C	<table border="1"> <tr><td>A</td></tr> <tr><td>B</td></tr> <tr><td>C</td></tr> </table>	A	B	C	<table border="1"> <tr> <td>DRAWN BY</td> <td>DATE</td> <td>N.T.S.</td> <td>PLAN</td> </tr> <tr> <td>TRACED BY</td> <td>DATE</td> <td></td> <td>MAP 5-3</td> </tr> </table>	DRAWN BY	DATE	N.T.S.	PLAN	TRACED BY	DATE		MAP 5-3	SHEET INDEX	
A															
B															
C															
DRAWN BY	DATE	N.T.S.	PLAN												
TRACED BY	DATE		MAP 5-3												