

84-#335 - 12240  
5

GEOCHEMICAL SURVEY

on the

CANADIAN QUEEN GROUP  
(Canadian Queen, Canadian Queen Fr.)

Omineca Mining Division  
95 M/5E

55° 19' N      127° 37' W

OWNER & OPERATOR:      TRI-CON MINING LTD.

WRITER:                      A.M. Homenuke, P.Eng. (Geol.)

SUBMITTED:                  May 25, 1984

**GEOLOGICAL BRANCH  
ASSESSMENT REPORT**

**12,240**

## CONTENTS

I.	INTRODUCTORY NOTES	
	Location and Access	1
	Physical Features	1
	Property Description	1
	History	1
	Economic Assessment	4
	Present Work and Distribution	4
II.	GEOCHEMICAL SURVEY	
	Purpose	4
	Procedure	10
	Discussion of Results	10
III.	CONCLUSIONS AND RECOMMENDATIONS	11
	AUTHOR'S QUALIFICATIONS	13
	REFERENCES	14
	COST STATEMENT	12

## ILLUSTRATIONS

Fig. 1	Location Map	2
Fig. 2	Claim Map	3
Fig. 3	Geochemical Survey - Arsenic	5
Fig. 4	Geochemical Survey - Copper	6
Fig. 5	Geochemical Survey - Lead	7
Fig. 6	Geochemical Survey - Silver	8
Fig. 7	Geochemical Survey - Zinc	9

## I. INTRODUCTORY NOTES

Location and Access (Fig. 1)

The Canadian Queen Claim Group is located on the northeast slope of Mount Glen, and adjoins the Silver Standard Mine property. The Silver Standard Mine Road provides access from Two Mile, 5 km. south of the mine, and a fair quality mine road switchbacks up, on a gentle grade, to the claims.

Physical Features

The property is located on a general easterly slope, starting at a height of land along the west boundary sloping gently to the center of the claims, then steeply to the east boundary, which is along a north-south ridge. A creek flows along the west side of this ridge.

Vegetation consists almost entirely of spruce and cedar, with little undergrowth. Some selective logging for cedar poles has been done in the past.

Property Description (Fig. 2)

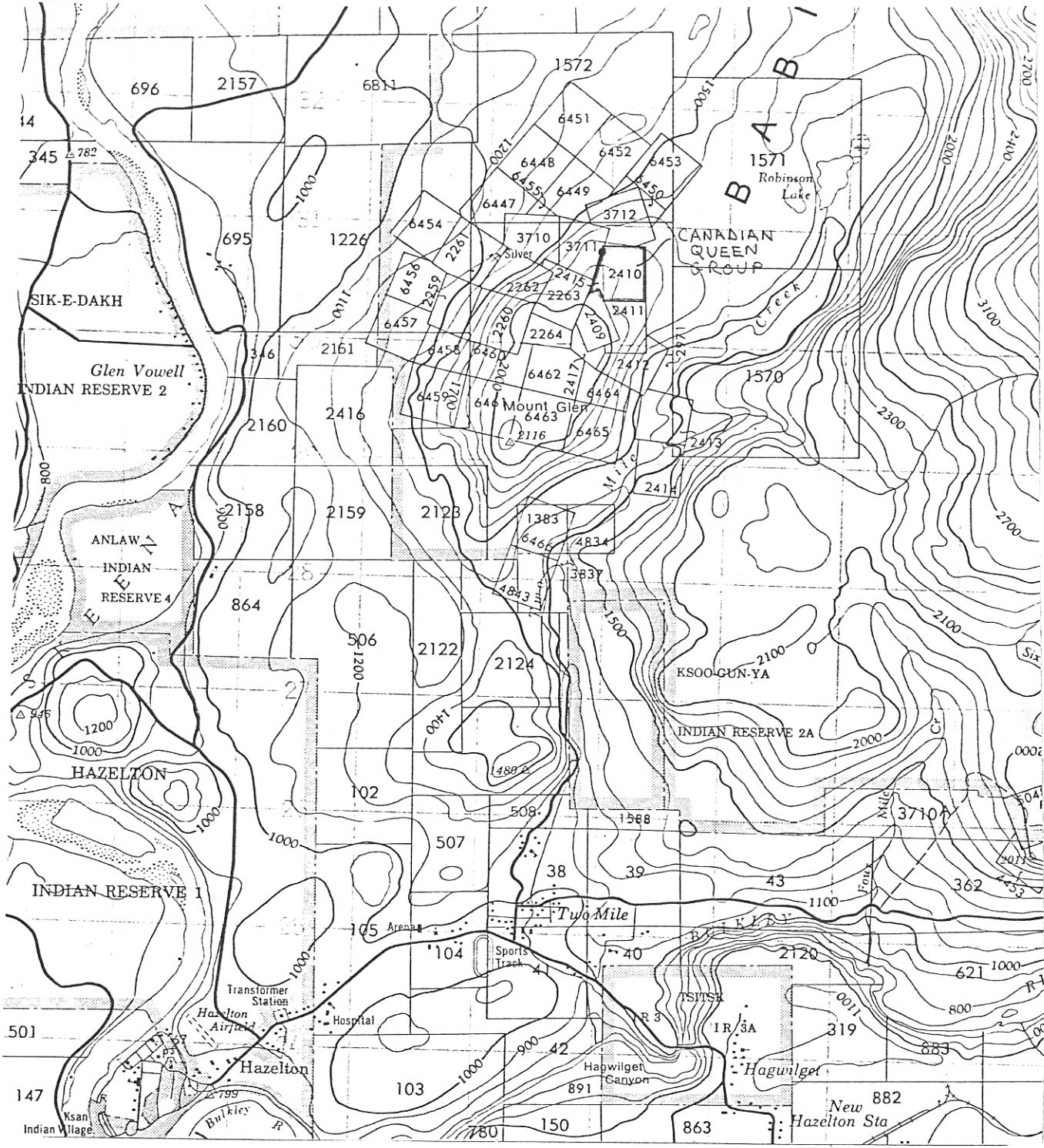
The Canadian Queen Group consists of two reverted Crown grants, formerly part of the Silver Standard Mine property.

<u>NAME</u>	<u>LOT #</u>	<u>RECORD #</u>	<u>YEAR ACQUIRED</u>	<u>RECORD DATE</u>
Canadian Queen	2410	303	1976	June 3
Canadian Queen Fr.	2415	304	1976	June 3

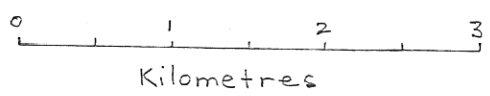
Owner and Operator is Tri-Con Mining Ltd.

History

The adjoining Silver Standard Mine produced almost 200,000 tons, yielding 7 million ounces of silver, plus gold, base metals and cadmium.

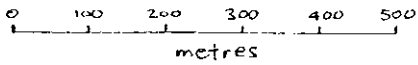
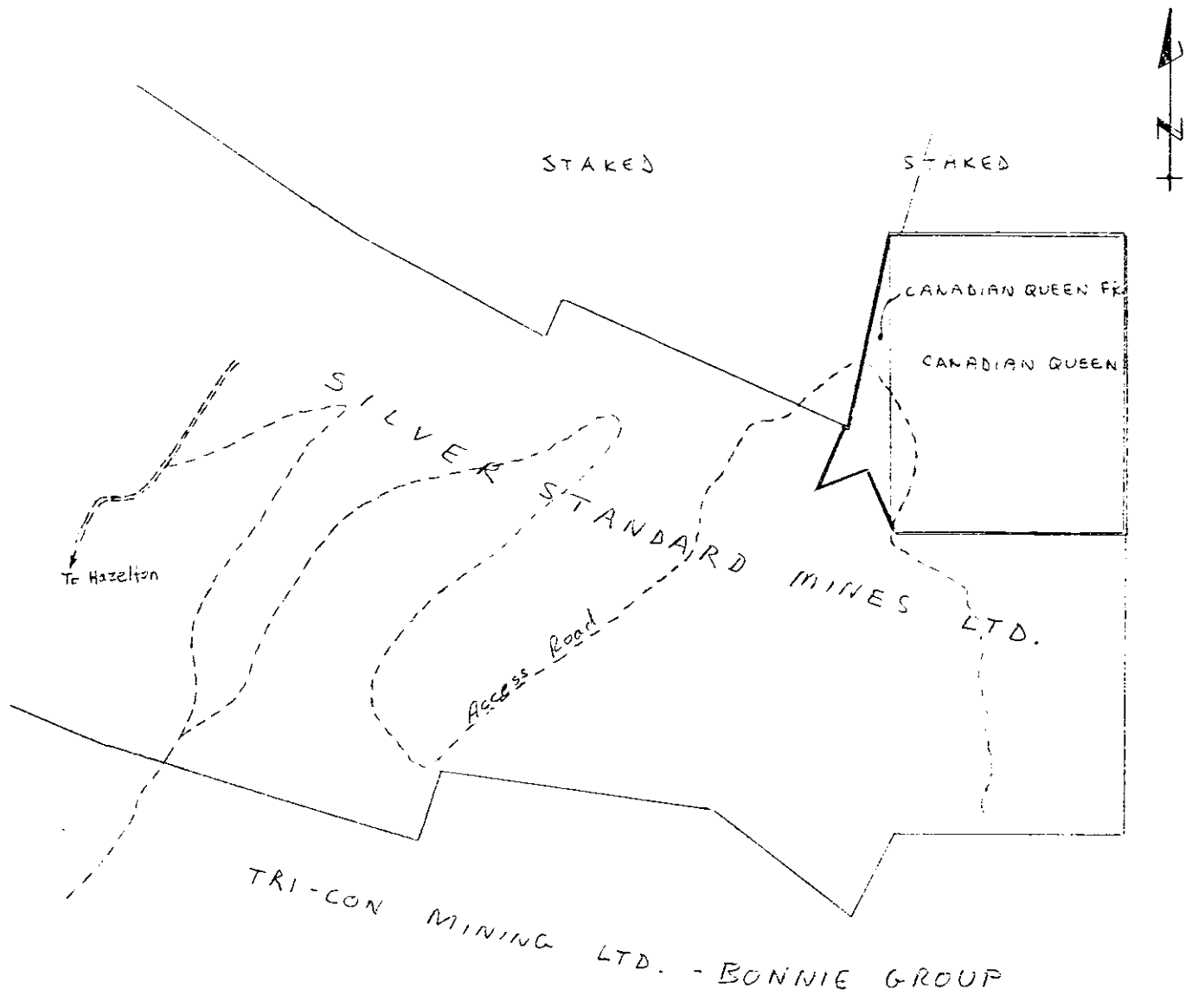


Part of 93M/5E



CANADIAN QUEEN PROPERTY  
LOCATION MAP

FIG. 1



CANADIAN QUEEN GROUP  
CLAIM MAP

FIG. 2

Several cut lines indicate that some work has been done in the past, however, no record is available. Tri-Con has been actively exploring the property since 1977. Exploration has consisted of geochemical sampling (Homenuke 1978, this report), electromagnetic surveying (unpublished), trenching, and diamond drilling (Homenuke, 1982).

The claims were first located in 1910 and were Crown granted in 1912. The only evidence known of physical work is an adit on the southwest corner of the claim. This is to the Black Prince vein on the adjoining Silver Standard Mine property. Recorded production from this vein is 2870 tons. (B.C.M.M. AR-1955).

#### Economic Assessment

The property immediately adjoins and was once part of the Silver Standard Mine. The claims were acquired on the possibility that further high-grade, silver-base metal veins might exist. Three veins have been discovered to date and soil sampling indicates the presence of at least one more vein. None of these have been developed.

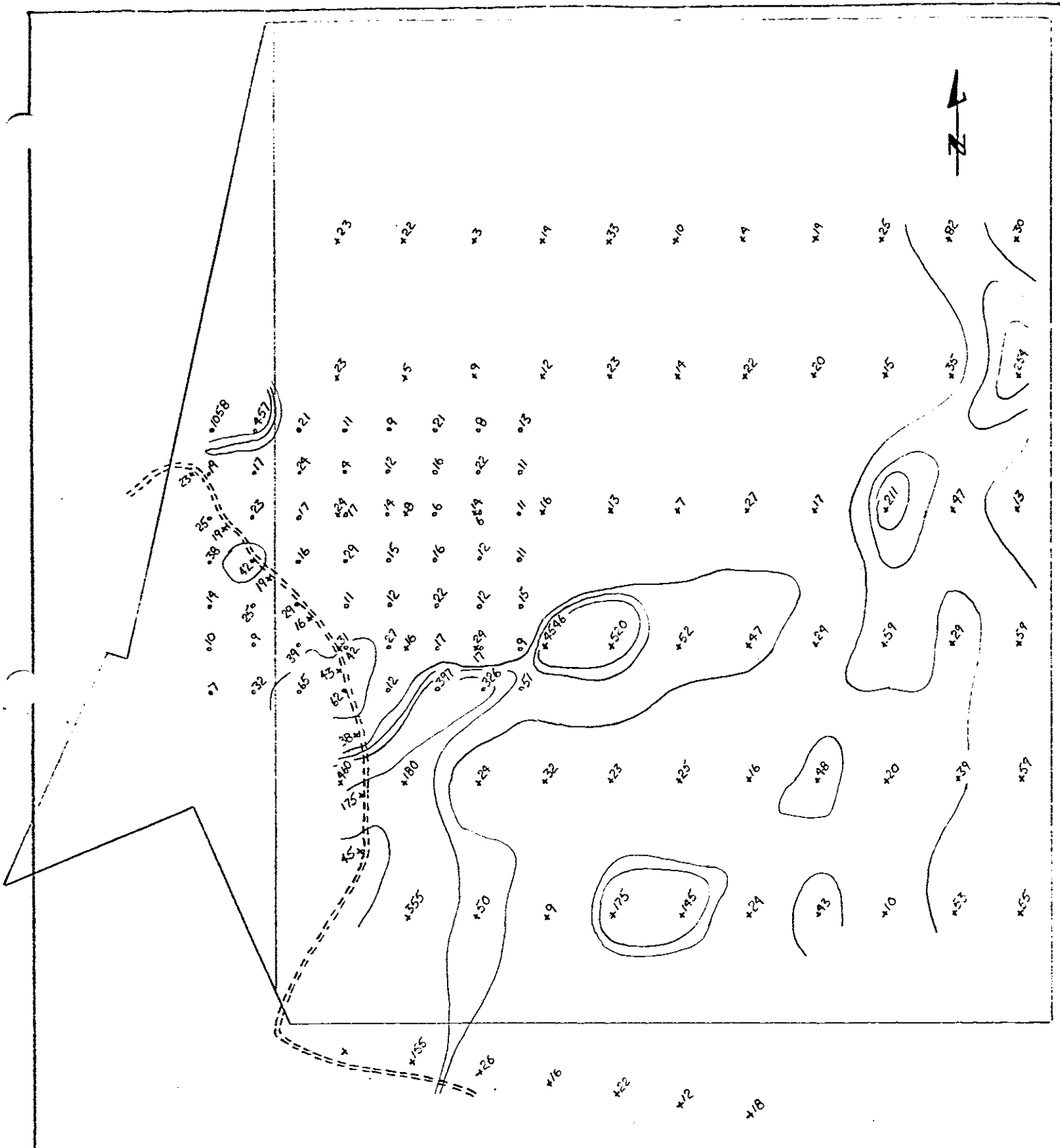
#### Present Work and Distribution

56 soil samples were taken on a 20 x 20 m grid over a portion of the property as part of an ongoing program to sample the total area in detail. Samples were taken from both claims.

## II. GEOCHEMICAL SURVEY

#### Purpose

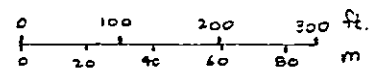
The soil samples were taken to further define areas of interest indicated by reconnaissance sampling.



- 12 x Soil sample location & value - ppm
- x Previously Sampled
- o 1983 Survey

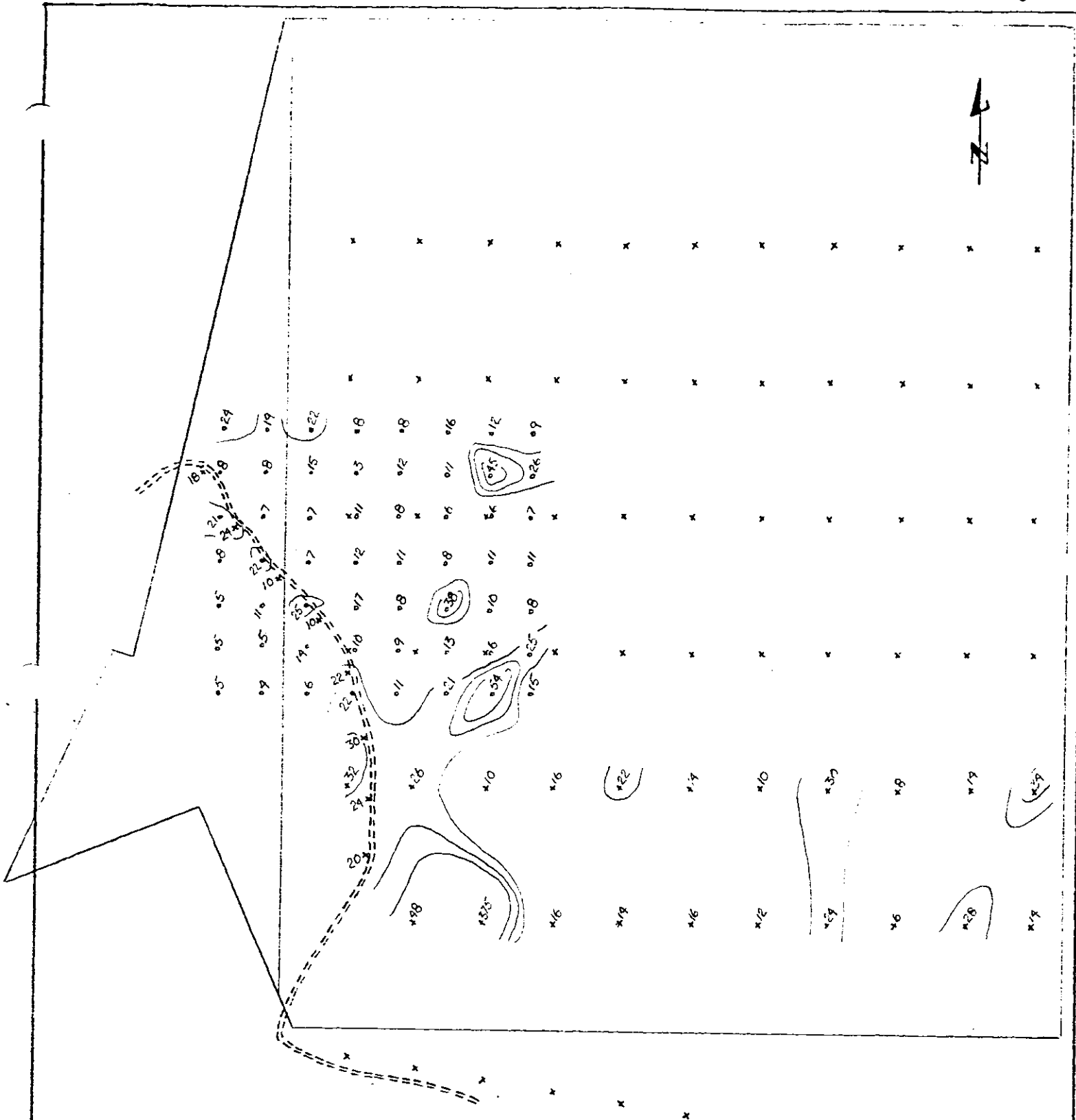
contour interval  
PPM

- 200
- 100
- 40

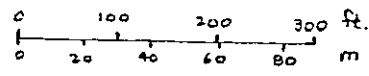


TRI-CON MINING LTD.  
CANADIAN QUEEN PROPERTY  
GEOCHEMICAL SURVEY  
ARSENIC

Prepared by: A.M. Homenuke, P.Eng.  
April, 1984 FIG. 3



- 12 x Soil sample location & value - ppm
  - x Previously Sampled
  - o 1983 Survey
- Contour interval  
ppm
- 40
  - 30
  - 20



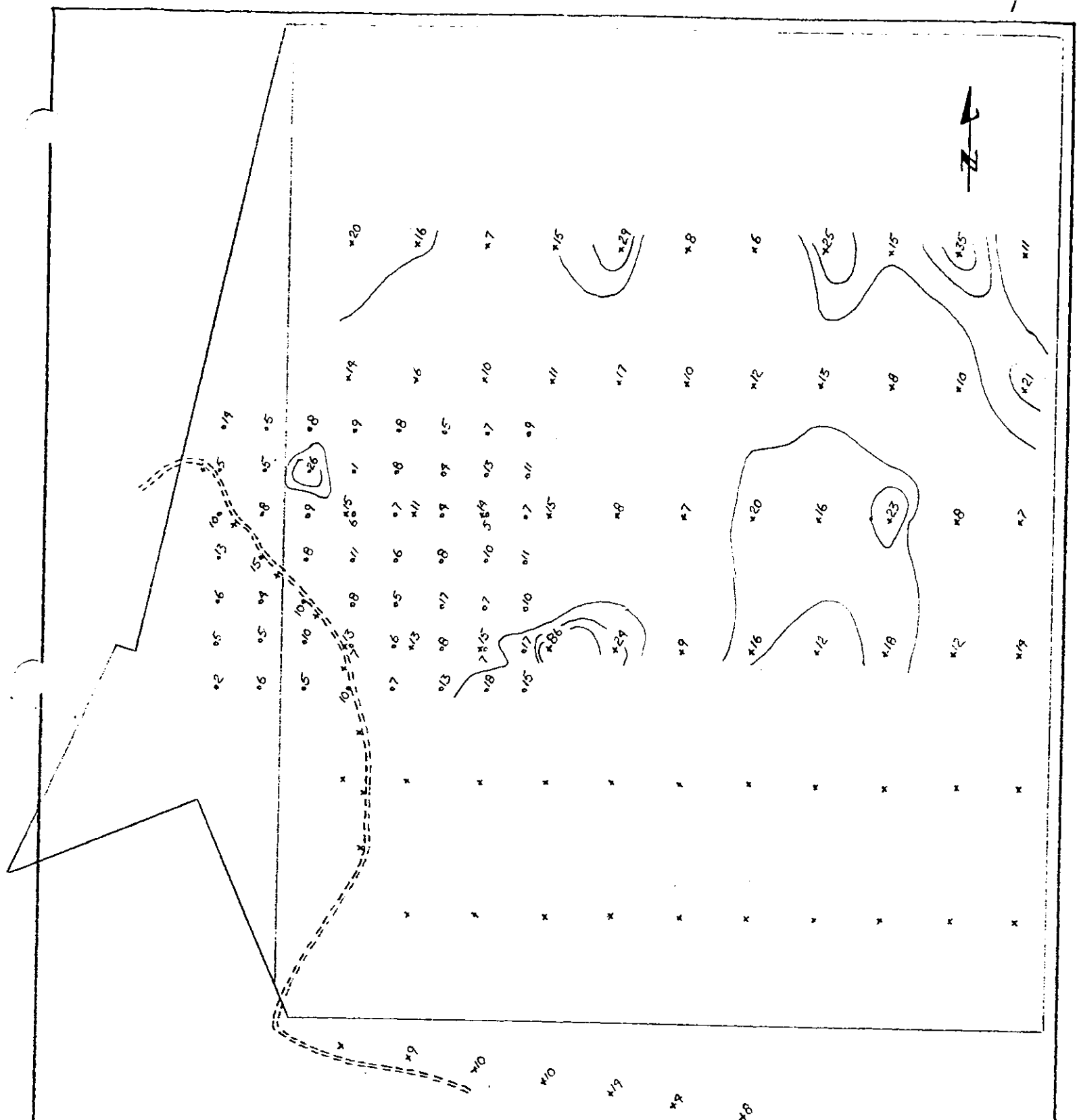
TRI-CON MINING LTD.  
CANADIAN QUEEN PROPERTY  
GEOCHEMICAL SURVEY

COPPER

Prepared by: A.M. Homenuke, P. Eng  
April, 1984

FIG. 4

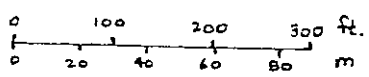




- 12 x Soil sample location & value - ppm
- x previously sampled
- o 1983 Survey

contour interval  
ppm

- 30
- 20
- 15

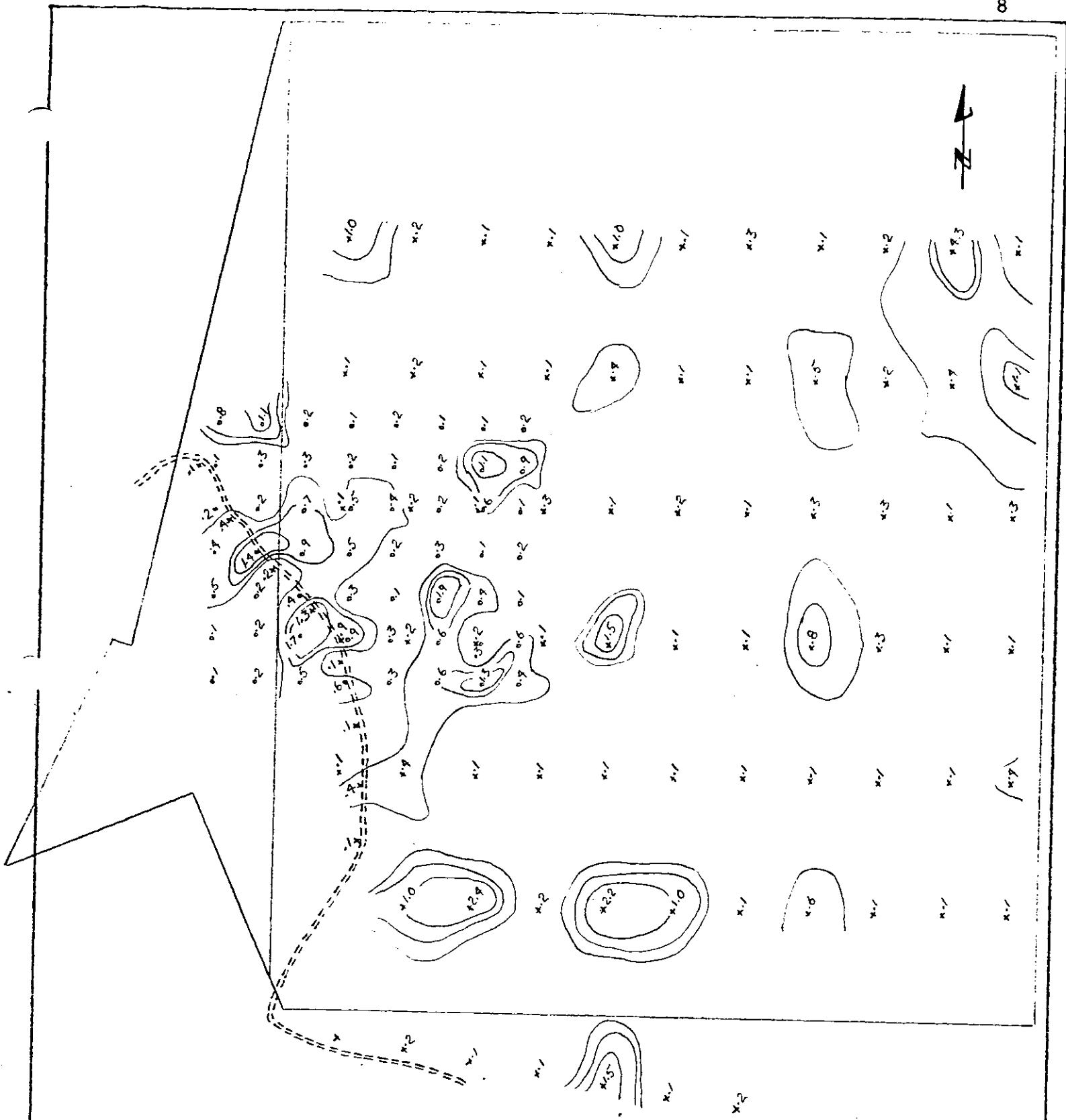


TRI-CON MINING LTD.  
CANADIAN QUEEN PROPERTY  
GEOCHEMICAL SURVEY

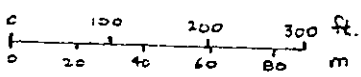
LEAD

Prepared by: A.M. Homenuke, P.Eng  
April, 1984

FIG. 5



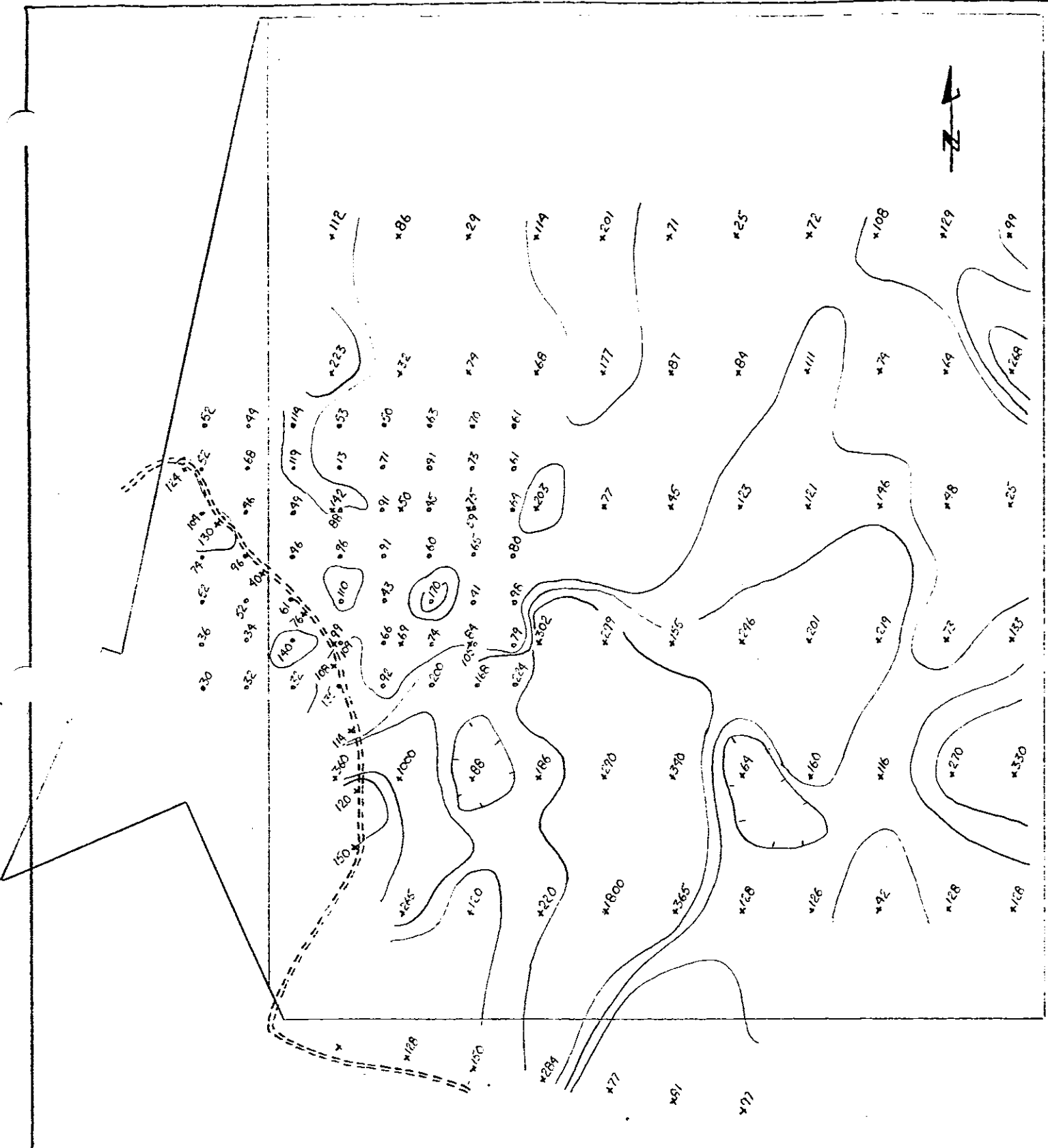
- 12 x Soil sample location & value - ppm
  - x previously sampled
  - c 1983 Survey
- Contour interval  
ppm
- 1.00
  - 0.60
  - 0.35



TRI-CON MINING LTD.  
CANADIAN QUEEN PROPERTY  
GEOCHEMICAL SURVEY  
SILVER

Prepared by: A.M. Homenuke, P.Eng  
April, 1984

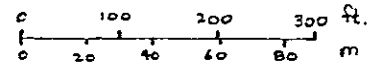
FIG. 6



- 12 x Soil sample location & value - ppm
- x previously sampled
- c 1983 Survey

Contour interval  
ppm

- 250
- 150
- 100



TRI-CON MINING LTD.  
CANADIAN QUEEN PROPERTY  
GEOCHEMICAL SURVEY  
ZINC

Prepared by: A.M. Homenuke, P.Eng.  
April, 1984 FIG. 7

### Procedure

56 soil samples were taken from the "B" soil horizon, on a 20 x 20 metre grid. The samples were placed in kraft envelopes and delivered to Acme Labs in Vancouver, B.C. They were dried at 60°C and sieved to -80 mesh; 0.5 gm. of sample was digested with hot aqua regia for one hour, then diluted to 10 ml. with water. The solution was analyzed for lead, zinc, silver, arsenic and copper by inductively-coupled argon plasma (ICP). This is a computer assisted, multi-element spectral analysis.

The results of the survey are shown on Figures 3 - 7. The results were contoured at levels selected by the writer to show possible mineralized trends.

### Discussion of Results

Most of the property was previously sampled on a 100' x 200' grid. Several anomalous samples were indicated. The current sampling on a 20 x 20 metre pattern is part of an ongoing program to better define targets for follow-up work. A major multi-element trend appears to be developing in an east-northeasterly direction across the centre of the property. This parallels the Black Prince Vein trend which runs across the southern part of the claims. Scattered high values along the western part of the property and a fairly strong trend along the eastern margin are probably related to quartz-filled regional structures which strike northerly. Whether these are of economic interest is not known. Two lesser cross-veins are present on the southwest corner of the claims (see Homenuke, 1982) and account for some of the high values in this area.

### III. CONCLUSIONS AND RECOMMENDATIONS

A multi-element geochemical trend indicating a probably mineralized structure runs east-northeasterly across the central part of the claims. This is considered to be the "best bet" exploration target and the detailed soil sampling should be continued to locate the highest zones for follow-up work.

Respectfully submitted,  
Tri-Con Mining Ltd.

A handwritten signature in black ink, appearing to read "A.M. Homenuke". The signature is written in a cursive, somewhat stylized font.

A.M. Homenuke, P.Eng.

COST STATEMENT

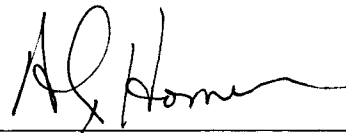
Sampler	Aug. 14, Aug. 20, 1983	2 days @ \$175/day	\$350
Analysis	56 samples ICP for As, Cu, Pb, Ag, Zn @ \$4.50/sample		252
Room & Board	2 man-days @ \$35		70
Truck	2 days @ \$50		100
Miscellaneous field supplies, secretarial, copying			25
Maps, Interpretation and report A. Homenuke, P. Eng.	1 day @ \$400		400
			<hr/>
		TOTAL	\$1,197

CERTIFICATE OF QUALIFICATION

I, ALEXANDER M. HOMENUKE, do hereby certify:

1. THAT I am a member in good standing of the Association of Professional Engineers of British Columbia.
2. THAT I received the Degree of Bachelor of Science in Geological Engineering from the Colorado School of Mines in 1974.
3. THAT I received a Diploma of Technology in Mining from the B.C. Institute of Technology in 1969.
4. THAT I have been employed in various aspects of mining exploration for 15 years and am presently employed by Tri-Con Mining Ltd., of Suite 2580 - 1066 West Hastings Street, Vancouver, British Columbia.
5. THAT I presently reside at 29825 Harris Road, Mt. Lehman, British Columbia.
6. THAT this Report is based on work supervised or conducted by myself.

DATED at Vancouver, British Columbia, this 25th day of May, 1984.



---

A.M. Homenuke, P.Eng.

REFERENCES

Kindle, E.D., 1954, Mineral Resources, Hazelton and Smithers Areas, Geol. Surv. of Ca., Memoir 223.

Smith, Alexander, 1957, Silver Standard Mine, in Structural Geology of Canadian Ore Deposits, Congress Volume, C.I.M. Special Publication.

B.C. Minister of Mines, various Annual Report.

Homenuke, A.M., 1978, EM-16 and Prospecting Report on the Canadian Queen and Bonnie Groups (assessment report).

1981, Geochemical Survey on the Canadian Queen Group (assessment report).

1982, 1981 Diamond Drill Program on the Canadian Queen Group (assessment report).