

84-#497 - #12399  
07/85

Prospecting

GEOLOGICAL OUTCROP REPORT

Mayou #: 1, 2, 3, 4, Sandy, Dot, Dash Claims

Northwestern British Columbia

Skeena Mining Division

NTS 104A/<sup>A/4W</sup>4W

Lat. 56 03' N  
Long. 129 48' W

FOR

NOR-CON EXPLORATION LTD.

Owners & Operator - Nor-Con Exploration Ltd.  
Author - Erik Lyngberg, Geologist

September 28, 1983

GEOLOGICAL BRANCH  
ASSESSMENT REPORT

12,399

E. Lyngberg Consulting Geologist

## TABLE OF CONTENTS

<u>PART A</u>	<u>PAGE #</u>
Summary	2 /
Introduction	3 /
Location and Access	3 /
Topography and Physiography	3 /
Property Ownership	3-6 /
Previous Work	6 /
Regional Geology	6-7 /
Property Geology	7-8 /
Mineralization	8 /
References	9 /
Certificate of Qualifications	10 /
Conclusions and Recommendations	11 /
<u>PART B</u>	
Summary	12 /
Introduction to Cost Statement	13 /
Detailed Itemized Cost Statement	14 /
<u>FIGURES</u>	
Figure 1 Location Map 1:50 000	4 /
Figure 2 Government Claim Map	5 /
Figure 3 Geology Map	In Back Pocket ✓

SUMMARY

The Mayou Group of claims of Nor-Con Exploration Ltd. were investigated during the summer of 1983, to locate and examine any mineralization on the property, and to prospect and map the claims. The mineralization, exposed in several trenches, indicates that chalcopyrite forms the primary mineralization, occurring in narrow lenses of limited extent in a brecciated quartz vein. Mapping indicated that the geology consists of argillites intruded by granitic dykes. Prospecting failed to locate further mineralization. Geochemical sampling is recommended to help locate other mineralization.

## INTRODUCTION

On July 16, 1983, and during the period August 6 to August 17, 1983, the mineral potential of the Mayou No. 1, 2, 3, 4, Sandy, Dot, and Dash Crown Granted 2 Post Claims were evaluated by one of Nor-Con Exploration's two prospecting crews. The crew consisted of a geologist and an assistant. A fly camp was established at the 1 750 m. level on the peak 2 km. northeast of Ore Mountain near Stewart, B.C. Supplies were delivered by helicopter based in Stewart.

## LOCATION AND ACCESS

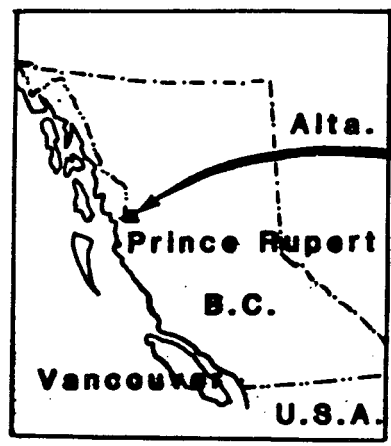
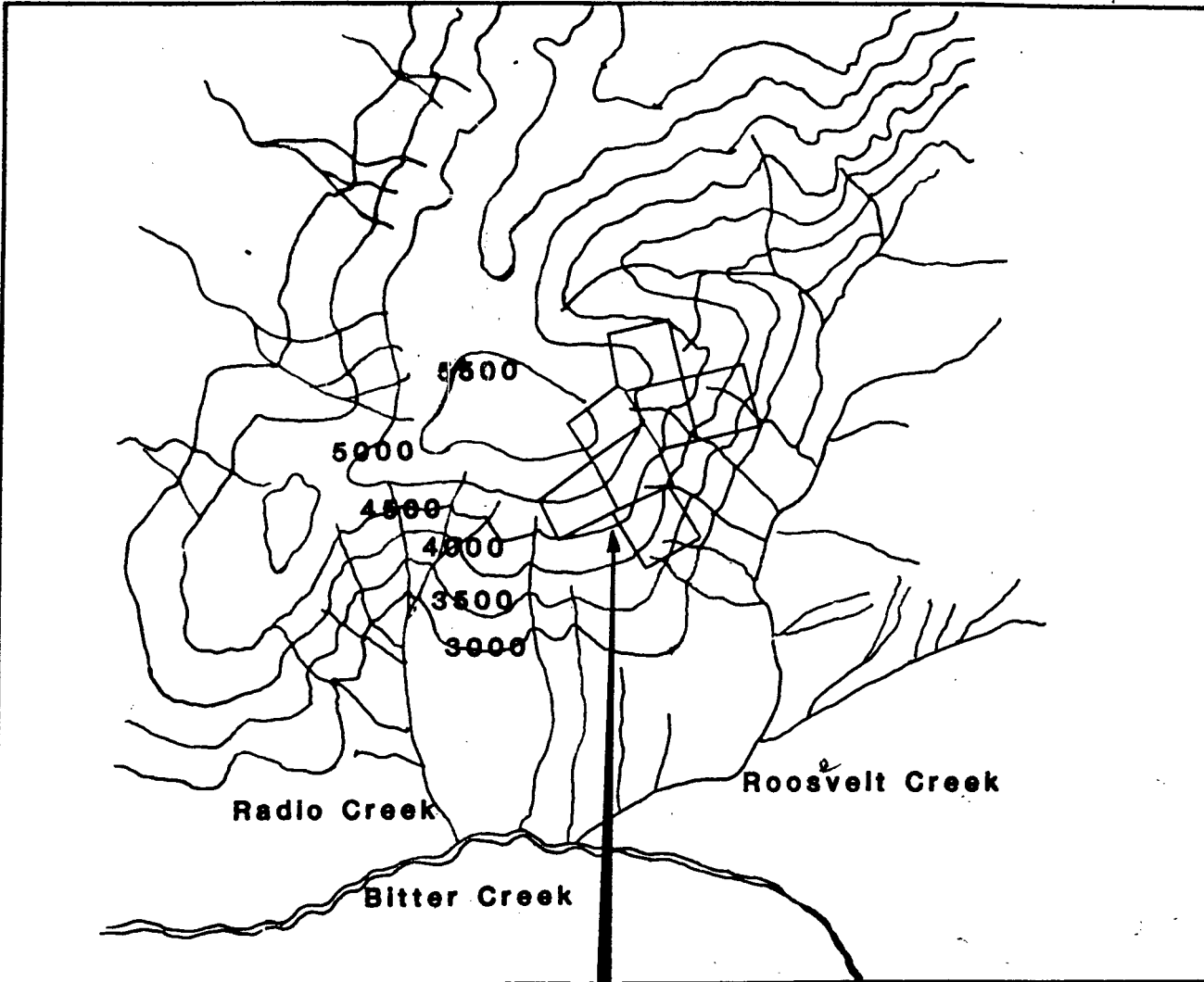
The claims are located at Lat. 56 03' N., Long. 129 48' W., approximately 16 km. northeast of Stewart, B.C. on the eastern flank of the peak immediately west of Roosevelt Creek. Fig. 1. Access is by Vancouver Island Helicopters Ltd., Bell 206 Long Ranger Helicopter, based in Stewart, B.C.

## TOPOGRAPHY AND PHYSIOGRAPHY

The claims lie on a moderately steep open slope, on the west side above Roosevelt Creek between 1 700 m. and 900 m. elevation. Above 1 460 m. there is good outcrop exposure, typically, small rocky knolls surrounded by talus, with little or no vegetation. Alpine meadows dominate the steep slope between 1 460 m. to 1 065 m. Below 1 065 m., Alder, Willow and Alpine firs are dominant. Seasonal creeks draining the property flow into Bitter Creek or Roosevelt Creek.

## PROPERTY OWNERSHIP (Fig. 2)

The property consists of seven (7) reverted crown granted 2 post claims all 100% owned by Nor-Con Exploration Ltd.

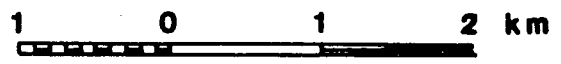


# MAYOU GROUP

Fig. 1

NORCON EXPLORATION LTD.

Scale 1:50000



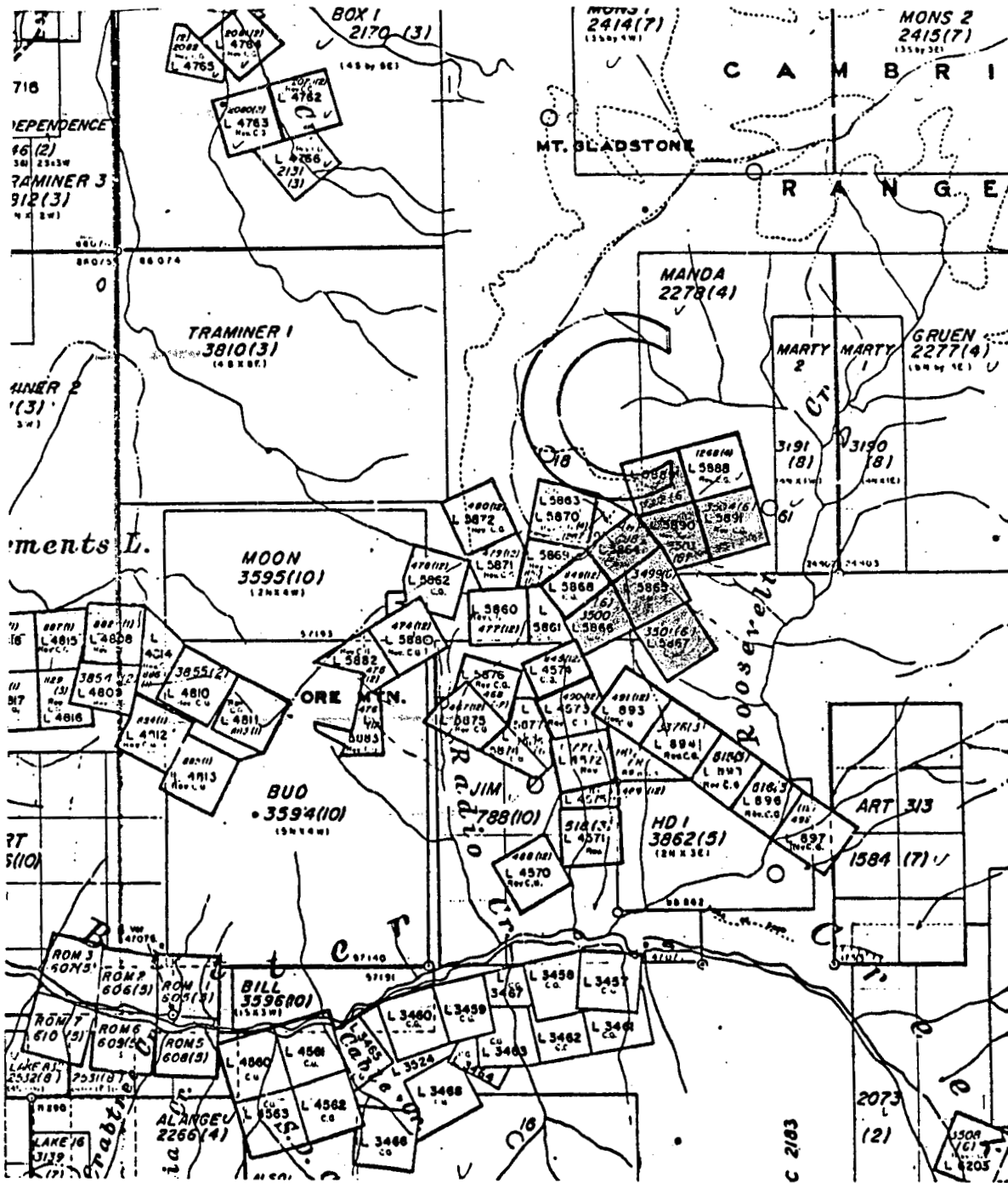


Fig. 2 GOVERNMENT CLAIM MAP

( 1:50000 )

The claims are:

Mayou No. 1	L 5864
Mayou No. 2	L 5865
Mayou No. 3	L 5866
Mayou No. 4	L 5867
Sandy	L 5889
Dot	L 5890
Dash	L 5891

Recorded on June 4, 1982.

### PREVIOUS WORK

The record of work specifically completed on the Mayou property is as follows:

1928: Mayou Gold Co. Ltd.: four trenches completed between 1645 m and 1737 m., on a zone of altered argillites with quartz veining. Mineralization included chalcopyrite, iron oxides, and malachite. Drifting was initiated on the No. 1 vein with high grade ore sacked for shipment. ✓

1929: Mayou Gold Co. Ltd.: Work was mainly driving three tunnels, No. 1 at 1 640 m - small stringers of galena  
No. 2 at 1 609 m - small stringer of ore  
No. 3 at 1 402 m - galena at contact between a dyke and argillites. } Morgan's slaving!

1930: Mayou Gold Co. Ltd.: Work continued on the adits with a trial shipment of 2 1/2 tons of unsorted ore to the Trail smelter.

1970: Ardo Mines Ltd., Crest Ventures Ltd., Geological mapping.

1972: Ardo Mines Ltd., Crest Ventures Ltd., Further geological reconnaissance.

1979: Beaver Gold Resources Inc.: Beaver Gold acquired some claims surrounding the Mayou property. Work done, if any, was not specified.

### REGIONAL GEOLOGY

Thin bedded black argillites of the Jurassic Hazelton Group form the bedrock over much of the Bitter Creek drainage. The regional strike is to the northwest with a westerly dip.

Rhyolites and dacite, also part of the Hazelton Group dominate the Cambria range, east of Bitter Creek. Cutting across the lower part of Bitter Creek is the Bitter Creek pluton, a coarse grained pinkish grey granite. Cross cutting and intruded into the argillites are granitic dykes of the Portland Canal dyke swarm. Structurally, the argillites in the Bitter Creek area are part of a broad anticline that extends from the Alice Arm district, north, to beyond American Creek.

#### PROPERTY GEOLOGY

The claims L 5864, L 5865, L 5866 and part of L 5867 were gridded at a 50 m. interval on lines spaced 50 to 100 m. apart. Claims L 5890, L 5889, were prospected on a regional traverse. The geology is plotted on Fig. 3.

The property is underlain by thin bedded, black argillite containing laminae of fine grained grey sandstone. Graded bedding is common. Numerous dykes intrude and cross cut the argillite. The most obvious dyke is a probable late stage, buff weathering, medium grained, block jointed, 5 m. to 10 m. wide, quartz diorite dyke: D<sub>2</sub>, D<sub>23</sub>, D<sub>24</sub>. The quartz diorite dyke trends north across L 5864 and L 5865 at about 100 E. Numerous smaller dykes 1 m. or less in width trend across L 5864 between 0 S to 200 S. These dykes tend to be more mafic in compositions, usually brown weathering diorites to gabbros. Several possible lamprophyre dykes (D<sub>6,7</sub>, D<sub>12</sub>) characterized by books of biotite or muscovite also outcrop. Between 250 S to 310 S a dark grey weathering, medium grained gabbro dykes, D<sub>13</sub>, 14, 15, 16, 17, with small plagioclase laths, occasionally porphritic, outcrops as a series of low hills that trend east-



west across the claim. Three parallel dykes, D20 diorite, D21 silicified gabbros, D22 gabbro, cross L 5865 at about 150 E. Claim L 5866 consists of talus and alpine meadows, while L 5867 is mainly meadows and forests. L 5889, L 5890, L 5891 are also underlain by dyke intruded argillites seen in a cirque on the western part of L 5889 and L 5890, below a glacier.

#### MINERALIZATION

Nine trenches and two adits T-9, T-10, were located on the property. Fig. 3. The trenches trace a 30 cm. to 1 m. wide quartz vein that strikes N 52 W, with a steep westerly dip. Most of the trenches expose iron stained zones in the quartz. Where the quartz vein is well exposed the argillite tends to be brecciated for about 1 m. on either side of the vein. Mineralization is spotty and in small lenses. In trench 5, a 10 cm. wide pyrite vein occurs in quartz, but the length is not more than a few metres. Disseminated chalcopyrite less than 5%, minor galena, bornite, and sphalerite are the common minerals, found in small lenses in some of the other trenches.

REFERENCES

B.C. Minister of Mines Annual Reports for years:

1928 p. 102  
1929 p. 49, 92  
1930 p. 106  
1970 p. 74

Geological Survey of Canada Map 307A - Portland Canal Area.

Grove, E.W. Geology and Mineral Resources of the Stewart Area.  
Bull No. 58 B.C. Department of Mines and Mineral Resources  
1971.

Hansen, G. Portland Canal Area, British Columbia, GSC  
Memoir 175, 1935.

CERTIFICATE OF QUALIFICATIONS

I, Erik Lyngberg, of the Municipality of West Vancouver, in the Province of British Columbia, do hereby certify that:

1. I am currently completing a Masters of Science in Geology at the University of British Columbia, Vancouver, B.C.
2. I have been practising my profession as a geologist since 1979.
3. I was employed by Nor-Con Exploration Ltd., P.O. Box 808, Prince Rupert, B.C., at the time the work was completed.
4. The information for this report was obtained from pertinent material as cited under references, and from a prospecting program carried out under my direct supervision on July 16, 1983 and between August 6, 1983 to August 17, 1983.

*Erik Lyngberg*  
Erik Lyngberg, BSc.  
Geologist

West Vancouver, B.C.  
September 28, 1983

## CONCLUSIONS

1. Property geology consists of Argillites intruded and cross cut by dykes of varying compositions.
2. Mineralization occurs within a quartz, brecciated vein that contains lenses of mineralization of limited extent.
3. The common ore minerals are:
  - chalcopyrite
  - minor galena
  - minor sphalerite
  - minor malachite

## RECOMMENDATIONS

1. A detailed prospecting and geochemical sampling program; soil, talus fines, chip sampling of dykes, should be initiated on a close spaced grid (10 m.) to locate further hidden mineralized zones.

PART BItemized Cost Statement for Mayou Property of  
Nor-Con Exploration Ltd.SUMMARY

Total: 23 Field days

Duration of total exploration program August 6, 1983 - August 17,  
1983.

a) Total salary	\$2 137.00
b) Total Food and Accomodation	690.00
c) Total Transportation	2 938.50
d) Total Equipment Costs	973.20
e) Office Expenses and Miscellaneous	750.00
f) Total Preparation of Report	<u>750.00</u>
g) Total Cost of Exploration Program	<u><u>\$8 238.70</u></u>

INTRODUCTION TO COST STATEMENT

On July 16, 1983 and from August 6, 1983 to August 17, 1983, Nor-Con Exploration Ltd. conducted an exploration program on the company's Mayou prospect. The personnel present were:

E. Lyngberg	Geologist	July 16, 1983 and August 6 - August 17, 1983
P. Guyan	Assistant	August 6 - August 17, 1983
S. Fegen	Prospector	July 16, 1983

Personnel and equipment transported to the claim group from another property by Vancouver Island Helicopters, based in Stewart, B.C.

DETAILED ITEMIZED COST STATEMENTa) Salary

	# of Days Aug. 6 - Aug. 17, '83	Rate/Day	Totals
Geologist	12	\$ 100.00	\$1 200.00
Geological Assistant	11	67.00	737.00
Prospector	1	200.00	<u>200.00</u>
		Total	\$2 137.00

b) Food and Accommodation

3 Persons	24 Man Days	28.75	<u>\$ 690.00</u>
		Total	\$ 690.00

c) Transportation - Vancouver Island Helicopters

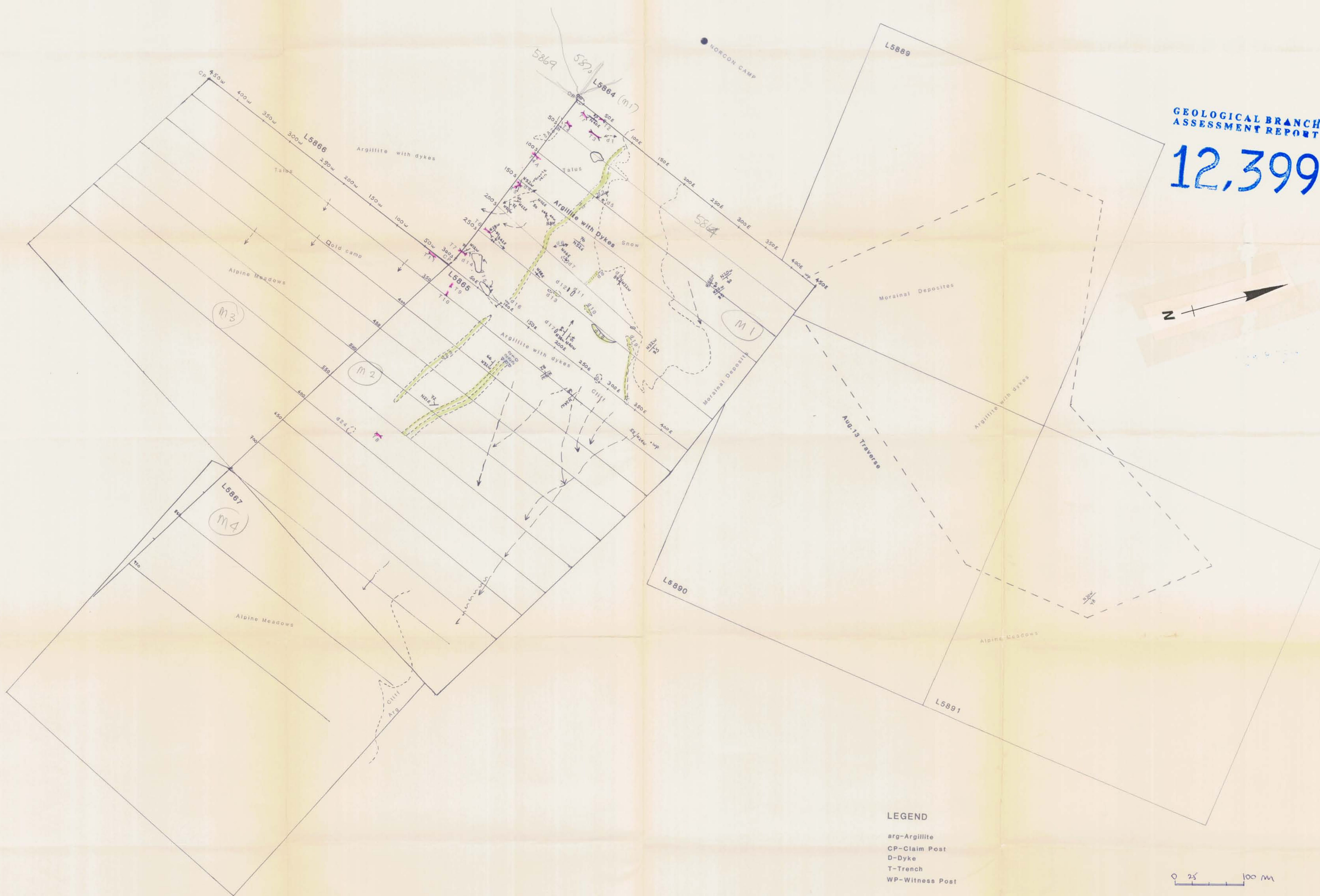
Date	Description	Ttl. Hrs.	Rate/Hr.	
July 16	Stewart - Mayou - drop off pick-up	0.8	\$ 653.00	522.40
Aug. 6	Other camp to Mayou 50% of	4.0		1 306.00
Aug. 9	Stewart - Mayou with propane	0.4		261.20
Aug. 11	Stewart - Mayou with groceries	0.4		261.20
Aug. 16	Stewart - Mayou, attempt with groceries	0.4		261.20
Aug. 17	Mayou - other camp - 50% of	1.0		<u>326.50</u>
		Total		\$2 938.50

d) Equipment Costs: Rate/day based on 33% of total equipment cost for field program averaged between 2 crews.

Man Days	Rate/Day	
24	\$ 40.55	<u>\$ 973.20</u>
	Total	\$ 973.20

e) Office Expenses and Miscellaneous \$ 750.00f) Cost of Report Preparation \$ 750.00

Total Cost of Exploration Program	<u>\$ 8 238.70</u>
--------------------------------------	--------------------



**LEGEND**  
 arg-Argillite  
 CP-Claim Post  
 D-Dyke  
 T-Trench  
 WP-Witness Post

SEE TEXT FOR EXPLANATION

NORCON EXPLORATION LTD.	
Fig 3	
<b>MAYOU GROUP</b>	
To Accompany Report By: E. LYNGBERG	
DWN. By S.B.	Date: Nov. 30, 1983
Scale: 1:2500	N.T.S. 104 A/4