

84-#499 - #12400
7/85

PROSPECTING REPORT

BON ACCORD, BON ACCORD NO. 9, BON ACCORD NO. 10

NORTHWESTERN BRITISH COLUMBIA

SKEENA MINING DIVISION

**GEOLOGICAL BRANCH
ASSESSMENT REPORT**

NTS 104B/8W

Lat. 56° 00' N
Long. 129° 46' W

12,400

FOR

NOR-CON EXPLORATION LTD.

Owner & Operator: Nor-Con Exploration Ltd.
Author: Erik Lyngberg
Geologist

October, 1983

TABLE OF CONTENTS

<u>PART A</u>	<u>Page #</u>
Summary	2
Introduction	3
Location and Access	3
Topography and Physiography	3
Property Ownership	3-6
Previous Work	6
Regional Geology	6-7
Property Geology	7
Mineralization	7
Conclusions and Recommendations	8
References	9
Certificate of Qualifications	10
 <u>PART B</u>	
Prospecting Program Summary of Costs	11
Introduction to Cost Statement	11
Detailed Itemized Cost Statement	12
 <u>FIGURES</u>	
Fig. 1 Location Map 1:50 000	4
Fig. 2 Government Claim Map	5
Fig. 3 Traverse Map	In Back Pocket.
Appendix 1 -- Photographs of the Property	13

SUMMARY

The Bon Accord claims of Nor-Con Exploration were visited during the summer of 1983 to locate any mineralization. The claims were found to be covered by glacial drift or braided stream deposits. Bedrock exposed in Hartley Creek was chloritized augite diorite. Mineralization was not located. Geochemical sampling and prospecting is recommended to locate any mineralization present in the property.

INTRODUCTION

On July 18, 1983, the mineral potential of the Bon Accord, Bon Accord No. 9, and Bon Accord No. 10 Reverted Crown Granted 2 Post Claims were evaluated by one of Nor-Con Exploration's two prospecting crews. The crew, consisting of a geologist, an assistant, were transported to the claims by helicopter. The program was part of a larger exploration program conducted in the Bitter Creek area.

LOCATION AND ACCESS (Fig. 1)

The claims are located at Lat 56° 00' 30" N. Long. 129° 46' W, on the western slope of Otter Mountain; immediately north of Hartley Creek, approximately 15 km. northeast of Stewart, B.C. Access is by Vancouver Islands Helicopters, Bell 206 Long Ranger Helicopter based in Stewart, B.C.

TOPOGRAPHY AND PHYSIOGRAPHY

The claims occupy the moderately steep slope above the Hartley Creek gully between the 310 m. level to the 790 m. level. Outcrop exposure is generally poor, except above 580 m. in Hartley Creek. Alpine fir and Alder dominate the upper forest story with devils club and various shrubs in the lower forest story. Alpine meadows are common at higher elevations. Hartley Creek, flowing into Bitter Creek, drains the property with several smaller seasonal streams flowing into Hartley Creek or Bitter Creek.

PROPERTY OWNERSHIP (Fig. 2)

The property consists of 3 Reverted Crown Granted 2 Post Claims all 100% owned by Nor-Con Exploration Ltd. The claims

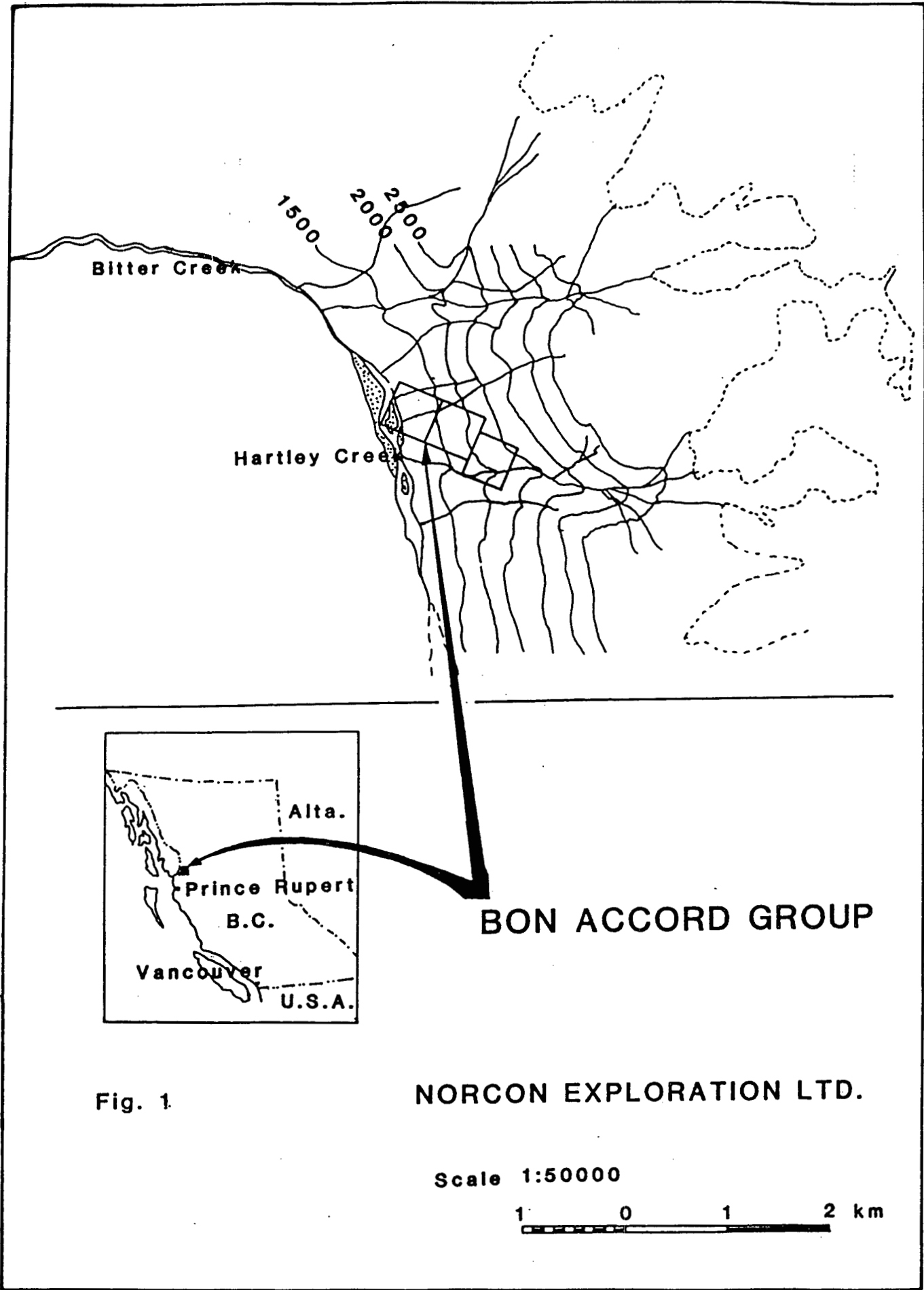
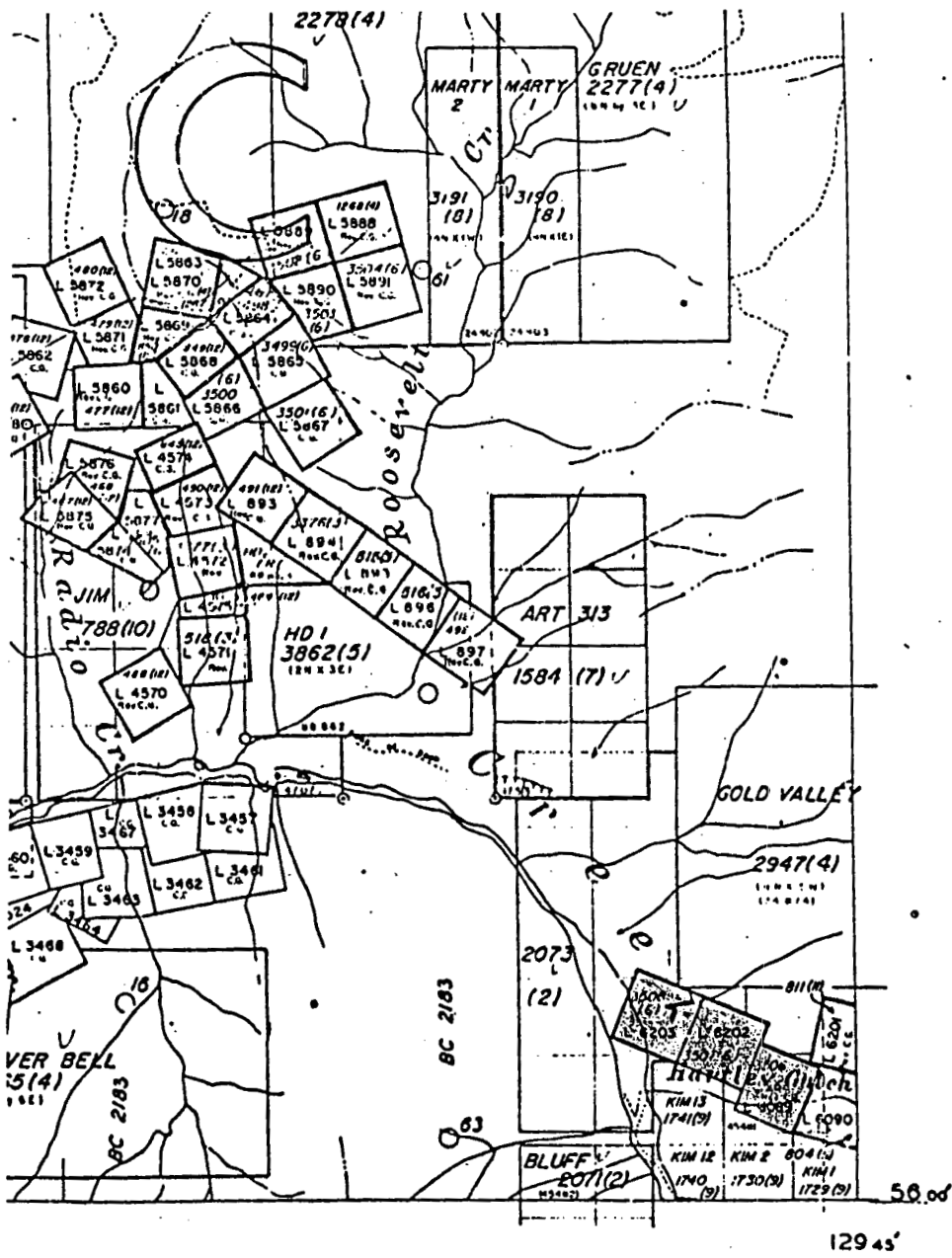


Fig. 1.

NORCON EXPLORATION LTD.

Scale 1:50000

1 0 1 2 km



2 Miles
 2000 3000 Metres
 3 Kilometres

UNLESS VERIFIED OR SURVEYED, THE MAP POSITION OF A LEGAL CORNER POST IS BASED ON THE LOCATOR'S SKETCH. FOR FURTHER INFORMATION, APPLY TO THE OFFICE OF THE MINING DIVISION CONCERNED.

DATE OF MICROFILM: 83/012/108

SOURCES

This map is prepared only as a guide to the location

Fig. 2 GOVERNMENT CLAIM MAP
 (1:50000)

are:

Bon Accord	L 6089
Bon Accord No. 9	L 6202
Bon Accord No. 10	L 6203

Record on June 4, 1982.

PREVIOUS WORK

The only record of the Bon Accord group is in the B.C. Department of Mines Report for 1946 which mentions that the Bon Accord group is the former LL and H Group.

Most of the work on the LL and H Group however, was between the elevations 1035 m. to 1220 m.

On the LL and H Group, there are three fissure zones up to 12 feet wide, mineralized with quartz, arsenopyrite, galena, pyrite, chalcopyrite, and sphalerite. Development work consisted of trenching and cross cut adits.

REGIONAL GEOLOGY

Thin bedded black argillites of the Jurassic Hazelton Group form the bedrock over much of the Bitter Creek drainage. The regional strike is to the northwest with a westerly dip. Rhyolites and dacite, also part of the Hazelton Group dominate the Cambria Range, east of Bitter Creek. Cutting across the lower part of Bitter Creek, is the Bitter Creek pluton, a coarse grained pinkish grey granite. Cross cutting and intruded into the argillites are granitic dykes of the Portland Canal dyke swarm. In Hartley Creek, above the glacial drift, an elongate augite diorite body intruded the argillites.

Structurally, the argillites in the Bitter Creek area

are part of a broad anticline that extends from the Alice Arm district, north, to beyond American Creek.

PROPERTY GEOLOGY (Fig. 3)

Bon Accord No. 10 (L6203) No outcrops were seen. The eastern corner of the claim is on a braided stream section of Bitter Creek. The rest of the claim is covered by glacial drift.

Bon Accord No. 9 (L6202): Over most of the claim the bedrock is poorly exposed. There are a few outcrops of augite diorite on the southern side of the claim. The augite diorite has a fine grained dark green chloritized matrix with small black augite phenocrysts, less than 5 mm. square in size. The augite comprises up to 5% of the rock.

Bon Accord (L6089): The best exposure of bedrock on the claim is in Hartley Creek. The rock is the same as in Bon Accord No. 9, massive augite diorite, with an irregularly developed joint pattern.

MINERALIZATION

A few thin lense like quartz veins, 12 cm. or less, thick, were examined on the Bon Accord claim. Mineralization consisted of isolated pyrite cubes, and wisps of possible sulfide mineralization. The augite diorite was devoid of mineralization.

CONCLUSIONS

1. Bedrock geology consists of augite diorite, where exposed. Most of the claims are covered by glacial drift or braided stream deposits.
2. Mineralization is minor disseminated pyrite in a few small quartz stringers.

RECOMMENDATIONS

1. A detailed geochemical sampling program, should be initiated, to locate any hidden mineralized zones.
2. Detailed geological mapping, and prospecting, should be undertaken to locate further mineralized zones.

REFERENCES

B.C. Minister of Mines, Annual Reports for the years:

1910 p. 77
1911 p. 75
1912 p. 109
1920 p. 57
1921 p. 66
1928 p. 103
1929 p. 97
1931 p. 43
1932 p. 59
1934 p. 132
1941 p. 54
1946 p. 81

Geological Survey of Canada Map 307A - Portland Canal Area.

Grove, E.W. Geology and Mineral Resources of the Stewart area. Bull. No. 58. B.C. Department of Mines and Mineral Resources, 1971.

Hansen, G. Portland Canal Area, B.C. GSC Memoir 175, 1935

CERTIFICATE OF QUALIFICATIONS

I, Erik Lyngberg, of the Municipality of West Vancouver, in the Province of British Columbia, do hereby certify that:

1. I am currently completing a Masters of Science degree in Geology at the University of British Columbia, Vancouver, B.C.
2. I have been practising my profession as a geologist since 1979.
3. I was employed by Nor-Con Exploration Ltd, P.O.Box 808, Prince Rupert, B.C. at the time the work was completed.
4. The information for this report was obtained from pertinent material as cited under references and from a prospecting program carried out under my direct supervision on July 18, 1983.

ERIK Lyngberg

Erik Lyngberg, B.Sc.
Geologist

West Vancouver, B.C.
October 16, 1983

PART B

ITEMIZED COST STATEMENT FOR
THE HARTLEY CREEK PROPERTY OF
NOR-CON EXPLORATION LTD.

Summary

Total: 1 Field Day

Duration of Total Exploration Program July 18, 1983

a) Total Salary	\$ 300.00
b) Total Food and Accommodation	57.50
c) Total Transportation	587.70
d) Total Equipment Costs	81.10
e) Office Expenses and Miscellaneous	200.00
f) Total Preparation of Report	<u>750.00</u>
g) Total Cost of Exploration Program	\$1 973.30

INTRODUCTION TO COST STATEMENT

On July 18, 1983, Nor-Con Exploration conducted a one day prospecting program of the company's Hartley Creek prospect. The persennel present were:

E. Lyngberg	Geologist	July 18, 1983
S. Fegen	Prospector	July 18, 1983

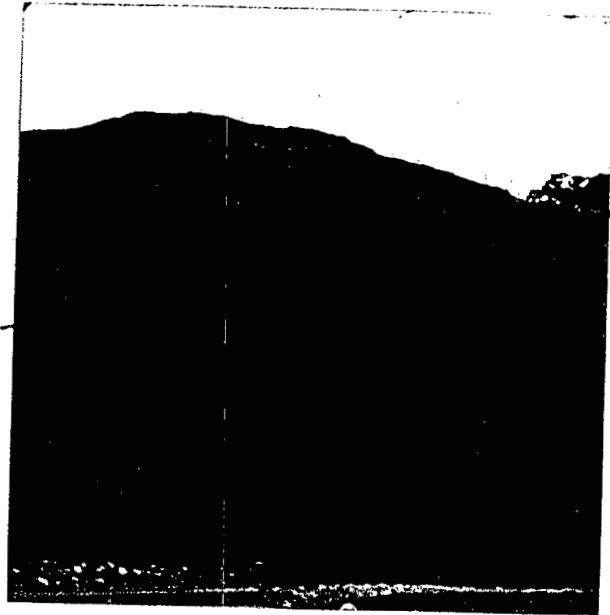
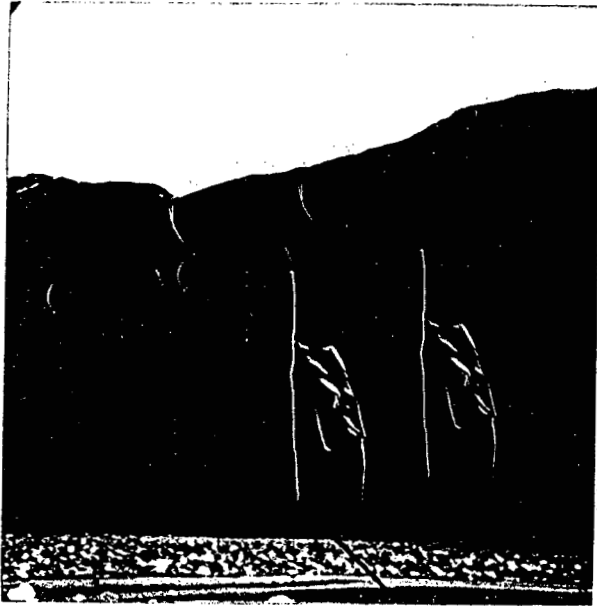
Personnel and equipment were transported to the claim group from Stewart by Vancouver Island Helcopter Ltd. based in Stewart, B.C.

DETAILED ITEMIZED COST STATEMENT

a) <u>Salary</u>	# of Days <u>July 18, 1983</u>	<u>Rate/Day</u>	<u>Totals</u>
Geologist	1	\$ 100.00	\$ 100.00
Prospector	1	200.00	200.00
		TOTALS:	\$ 300.00
b) <u>Food and Accommodation</u>			
	2 Man days	\$ 28.75	\$ 57.50
		TOTAL:	\$ 57.50
c) <u>Transportation</u> - Vancouver Island Helicopters Ltd.		<u>Rate/Hr.</u>	
July 18, 1983	Stewart-Hartley Creek-Stewart 0.9	\$ 653.00	\$ 587.70
		TOTAL:	\$ 587.70
d) <u>Equipment Costs:</u>	Rate/Day based upon 33% of total equipment costs for field program averaged between 2 crews.		
2 persons	2 Man days	\$ 40.55	\$ 81.10
		TOTAL:	\$ 81.10
e) Office Expenses and Miscellaneous			\$ 200.00
f) Cost of Report Preparation			\$ 750.00
	Total Cost of Exploration Program		\$1 976.30

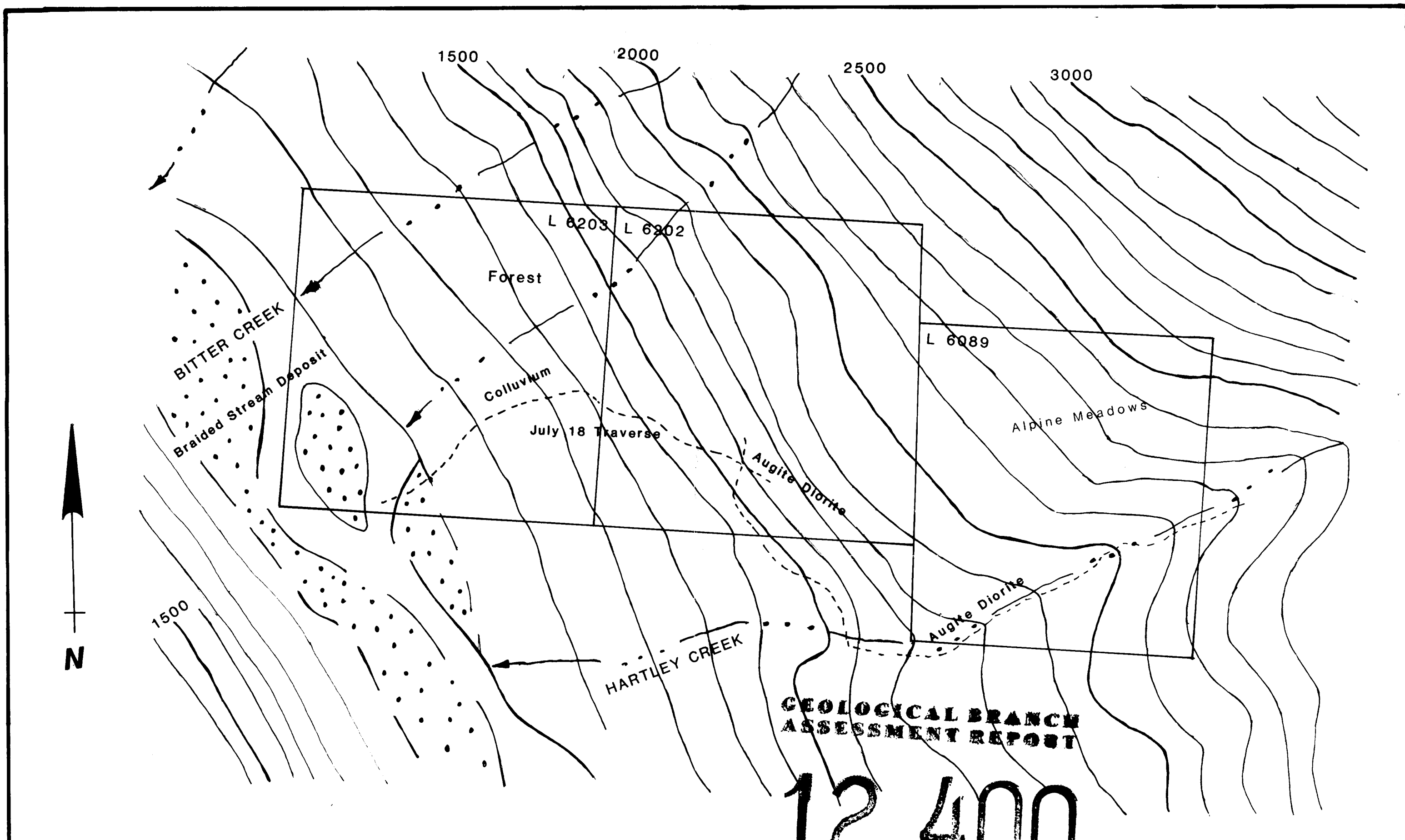
APPENDIX I

PHOTOGRAPHS OF
THE PROPERTY



Area of
Claims

Bon Accord Claim
(Lower Part)



**GEOLOGICAL BRANCH
ASSESSMENT REPORT**

12,400

NORCON EXPLORATION LTD.

Fig.3
BON ACCORD GROUP

To Accompany Report By E. LYNGBERG

DWN. By P.G.

Date Nov.30 1983

Scale: 1:5000

N.T.S. 104 A/4