



**exploration ltd.** GEOLOGY • GEOPHYSICS  
MINING ENGINEERING

'84-\*492(b) 7/85  
# 12411

Suite 214-850 WEST HASTINGS STREET, VANCOUVER, B.C.  
TELEPHONE (604) 681-0191 V6C 1E1

ASSESSMENT REPORT

on the

FALLS CLAIMS

New Westminster Mining Division - British Columbia

Lat 49° 34'N.

Long. 121° 05'W.

N.T.S. 92H/11E

for

SUECON DEVELOPMENT CORPORATION

**GEOLOGICAL BRANCH  
ASSESSMENT REPORT**

**12,411**

by

Donald G. Allen, P. Eng. (B. C.)

July 9, 1984

Vancouver, B. C.

TABLE OF CONTENTS

SUMMARY	1
CONCLUSION	2
CERTIFICATE	

TABLE

Table 1 Sample Descriptions and Analytical Results

ILLUSTRATIONS

Figure 1 Claim Map  
Figure 2 Geological Map

APPENDICES

Appendix I Certificate of Analyses  
Appendix II Affidavit of Expenses

SUMMARY

SUECON DEVELOPMENT CORPORATION holds two claims, FALLS 1 and 2 (Record Numbers 1230, 1231) in the Hidden Creek area of southwestern British Columbia. Expiry date is July 6, 1985 (assuming acceptance of this assessment report). The FALLS claims were examined by the writer with Eric Ascroft on July 20, 1983. The property is situated 32 kilometres northeast of Hope and is accessible by the Coquihalla Valley road to a bridge across Hidden Creek and thence by foot a short distance up the creek. The initial posts lie in Hidden Creek at about 3,000 feet elevation. The claims are underlain by muscovite granite, possibly a phase of the Eagle granodiorite or Needle Peak pluton (see map).

A quartz vein containing galena and chalcopyrite outcrops on the northwest side of the creek a short distance upstream from the initial claim posts. The vein trends northwesterly and dips gently to the northeast. It ranges in width from 10 to 40 centimetres and can be traced for a distance of 100 metres. Feldspars in the wall rock adjacent to the vein have been partly altered to sericite.

Rock descriptions and analytical results are summarized in the accompanying table. Analyses of the best mineralized parts of the vein indicate low gold and silver values.

CONCLUSION

Although analytical results are essentially negative, the property has some merit for the following reasons.

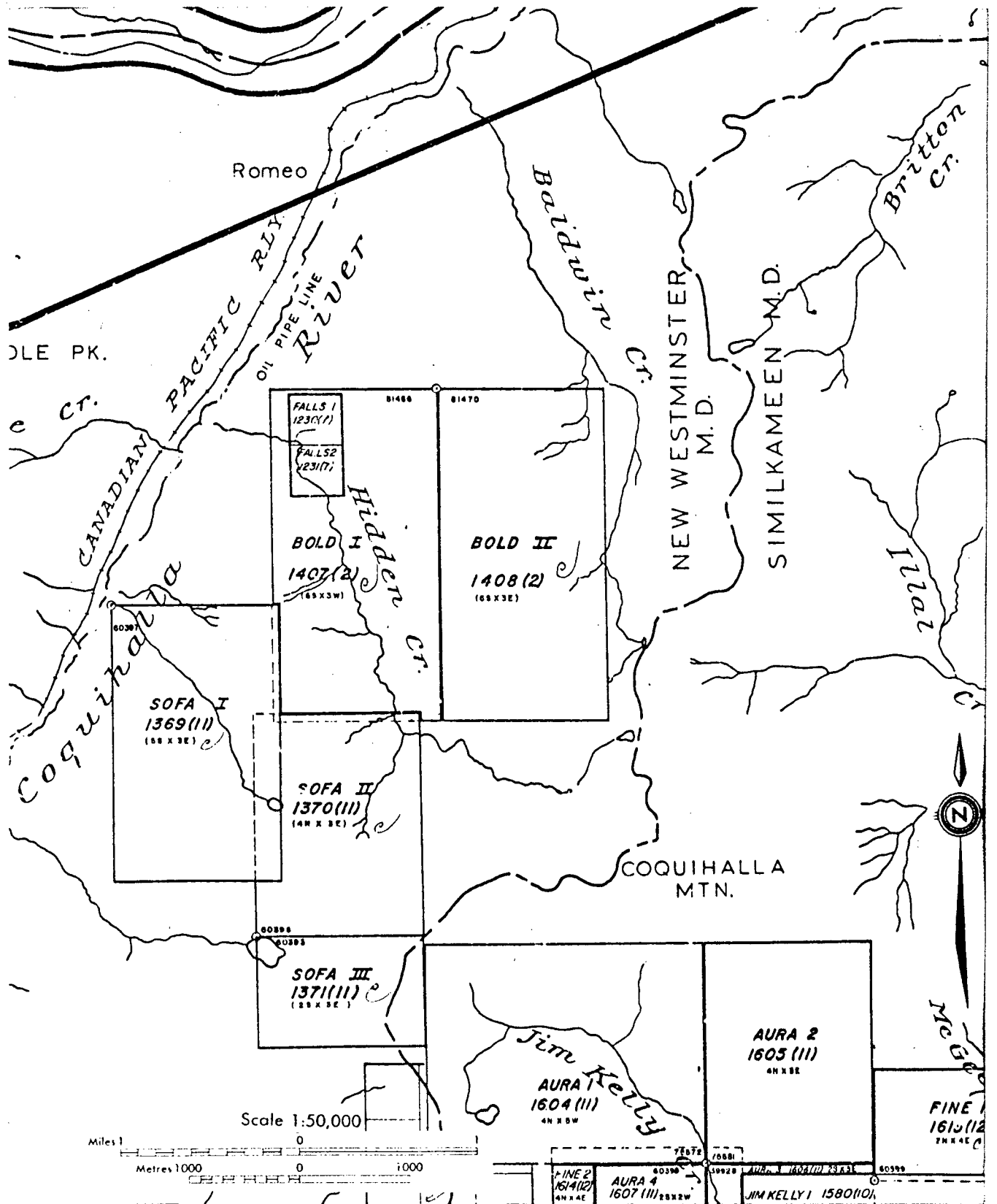
1. The quartz vein exposed in Hidden Creek lies adjacent to a large volcanic complex of Tertiary age (see Berman and Armstrong, Canadian Journal of Earth Sciences; vol. 17, pp. 985-995). Many significant precious metal districts in the southwestern United States are associated with similar complexes. Prospecting on and around the claim area is warranted to locate areas of alteration and/or vein development.
2. The quartz vein dips gently into the hill, hence it may be relatively easy to test by drilling for any high grade shoots.

Donald P. Allen

Table 1 Sample Descriptions and Analytical Results

<u>Sample No.</u>	<u>Description</u>	Analyses*				
		<u>Cu%</u>	<u>Zn%</u>	<u>Pb%</u>	<u>Ag oz/ton</u>	<u>Au oz/ton</u>
960	20 to 40 cm wide quartz vein containing scattered streaks & blebs galena & chalcopyrite ± sphalerite	0.07	0.24	0.1	1.6	0.04
961	Barren quartz from talus about 100m upstream from 962					
962	2-20cm splay from main vein near sample site 960					
963	20cm quartz vein with scattered blebs chalcopyrite, galena & Tr. pyrite.	0.05			0.5	0.009
964	Barren quartz from main vein 20m north of 960.					
S224	Silt sample from Hidden Creek above showing.					

\* In part converted from geochemical analyses in parts per million



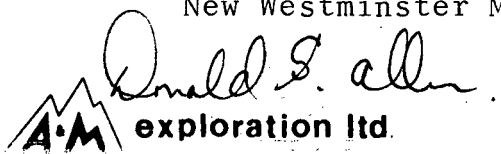
N.T.S. 92H/11E

SUECON DEVELOPMENT CORPORATION

### CLAIM MAP

FALLS CLAIMS

New Westminster Mining Division - British Columbia



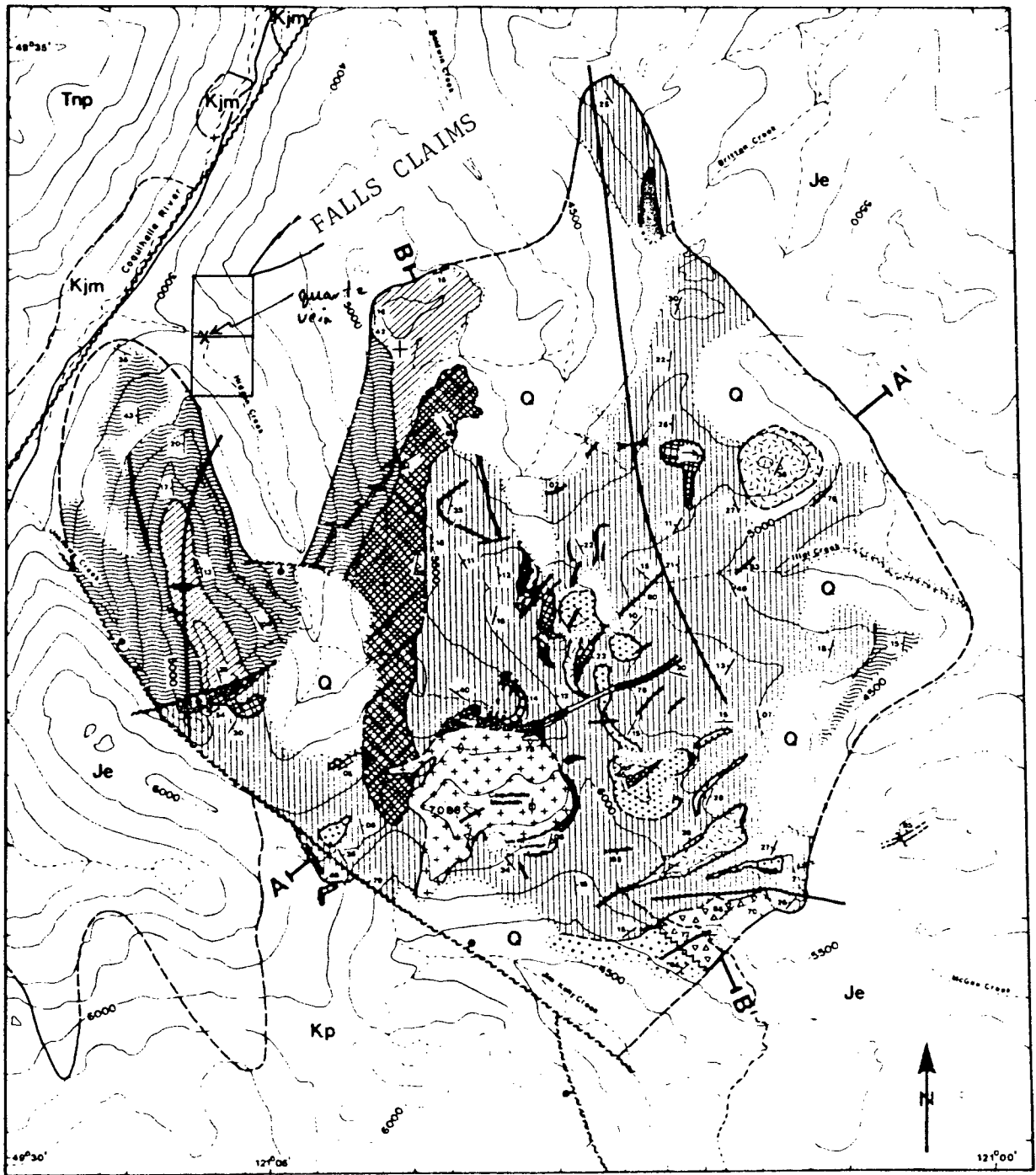
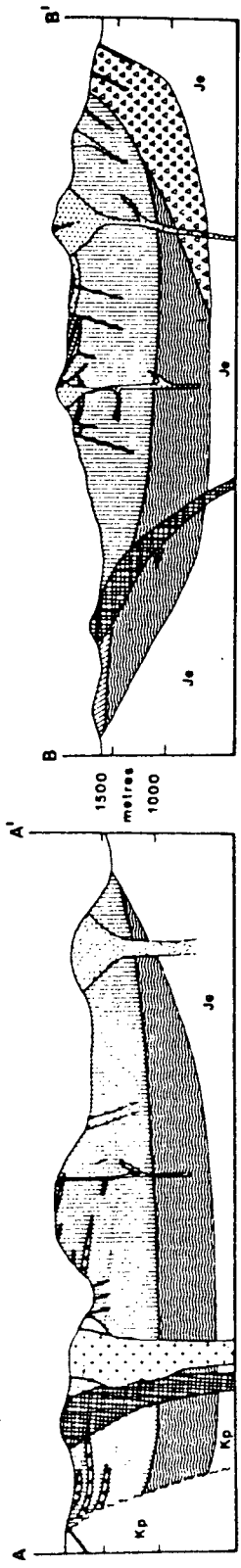


Figure 2 Geological map of the Coquihalla Volcanic Complex showing location of Falls Claims (after Berman and Armstrong, 1980).

*Donald G. All*



# LEGEND

## QUATERNARY

**Q** SURFICIAL DEPOSITS  
colluvium, alluvium

## TERTIARY

### EARLY MIOCENE

### IGNEOUS ROCKS

- COQUIHALLA MOUNTAIN STOCK  
pyroxene diorite, biotite-pyroxene quartz diorite
- APLITE  
dykes
- PYROXENE ANDESITE  
porphyritic plagioclase-pyroxene domes  
dykes and sills
- HORNBLENDE ANDESITE  
porphyritic plagioclase-hornblende-pyroxene domes  
dykes and sills
- HORNBLENDE DACITE  
porphyritic plagioclase-hornblende domes  
dykes
- RHYOLITE  
quartz-biotite-orthoclase domes  
and vitrophyric intrusive
- CRYSTAL-LITHIC LAPILLI TUFF  
non- to moderately-welded
- VOLCANIC-MATRIX BRECCIA  
Eagle Granodiorite clasts in pyroclastic matrix
- VITRIC TUFF  
non- to moderately-welded, crystal- and lithic-poor  
tuff with interbedded rhyolite flows
- LITHIC-CRYSTAL LAPILLI TUFF  
moderately- to densely-welded  
pneumatolytic alteration zone

## SEDIMENTARY ROCKS

AVALANCHE BRECCIA  
predominantly Eagle Granodiorite clasts  
Pasayten Group clasts

## OLIGOCENE

**Tnp** NEEDLE PEAK PLUTON  
granite and granodiorite

## EARLY CRETACEOUS

**Kp** PASAYTEN GROUP  
clastic sediments

**Kjm** JACKASS MOUNTAIN GROUP  
sandstone, minor conglomerate

## JURASSIC AND/OR EARLY CRETACEOUS

**Je** EAGLE GRANODIORITE  
foliated granodiorite

## SYMBOLS

- Geological boundary (defined, approximate, lateral gradation)
- Limit of Quaternary cover
- Bedding (inclined, horizontal)
- Flow banding (inclined, vertical)
- Columnar jointing (arrow indicates plunge)
- Fracture (inclined, vertical)
- Approximate position of anticlinal and synclinal axes
- Fault (defined, inferred, buried; circle indicates downthrown side)
- Bedding trace
- Contour
- Watercourse
- Road
- Trail

Legend for Figure 2



CERTIFICATE

I, Donald G. Allen, certify that:

1. I am a Consulting Geological Engineer, resident at 4570 Hoskins Road, North Vancouver, British Columbia.
2. I am a graduate of the University of British Columbia with degrees in Geological Engineering (B.A.Sc., 1964; M.A.Sc., 1966).
3. I have been practising my profession since 1964.
4. I am a member in good standing of the Association of Professional Engineers of British Columbia.
5. This report is based upon a property examination carried out personally on July 20, 1983.
6. I hold no interest, nor do I expect to receive any, in the FALLS claims or in Suecon Development Corporation.
7. I consent to the use of this report in a Statement of Material Facts or in a Prospectus in connection with the raising of funds for the project covered by this report.

July 9, 1984  
Vancouver, B.C.



Donald G. Allen,  
P. Eng. (B.C.)

APPENDIX I  
Certificate of Analyses

# Rossbacher Laboratory Ltd.

GEOCHEMICAL ANALYSTS & ASSAYERS

2225 S. SPRINGER AVE.,  
BURNABY, B. C.  
CANADA  
TELEPHONE: 299-6910

## CERTIFICATE OF ANALYSIS

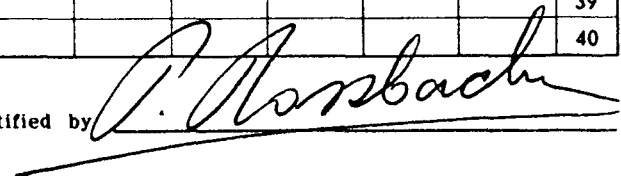
TO: **A & M EXPLORATION LTD.**  
4570 HOSKINS ROAD  
NORTH VANCOUVER, B.C. V7K 2R1

CERTIFICATE NO. **83275-4**  
INVOICE NO. **3213**  
DATE ANALYSED **83/08/03**  
PROJECT **FALL CLAIMS**

No.	Sample	pH	Mo	Cu	Ag	Zn	Pb	PPB Au				No.
01	83-1-960			730	39.0	1,920	58	1,360				01
02	83-1-961			8	0.2	4	12	10				02
03	83-1-962			6	1.4	22	20	10				03
04	83-1-963			476	15.8	52	58	320				04
05	83-1-964			42	2.2	24	24	40				05
06	83.FAS 224			24	0.2	3.6	.6	10				06
07												07
08												08
09												09
10												10
11												11
12												12
13												13
14												14
15												15
16												16
17												17
18												18
19												19
20												20
21												21
22												22
23												23
24												24
25												25
26												26
27												27
28												28
29												29
30												30
31												31
32												32
33												33
34												34
35												35
36												36
37												37
38												38
39												39
40												40

VALUES IN PPM UNLESS NOTED OTHERWISE.

Certified by



# Rossbacher Laboratory Ltd.

GEOCHEMICAL ANALYSTS & ASSAYERS

2225 S. SPRINGER AVE.,  
BURNABY, B. C.  
CANADA  
TELEPHONE: 299-8910  
AREA CODE: 604

## CERTIFICATE OF ANALYSIS

TO: A & M EXPLORATION LTD.  
4570 Hoskins Road  
North Vancouver, B.C.

CERTIFICATE NO. 83275-5

INVOICE NO. 3213

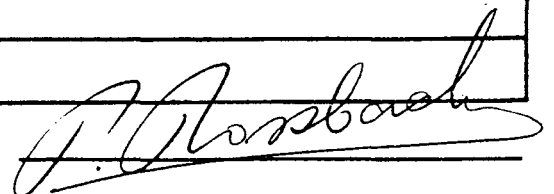
DATE RECEIVED

DATE ANALYSED July 28, 1983

ATTN: Fall Claims

SAMPLE NO.:	% Pb	% Zn	oz/T Ag
83-1-960	0.10	0.24	1.60

Certified by



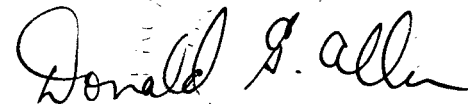
APPENDIX II  
Affidavit of Expenses

AFFIDAVIT OF EXPENSES

This will certify that geological mapping and geochemical sampling was carried out on July 20, 1983 on the FALLS 1 and 2 claims, Hidden Creek area, New Westminster Mining Division, British Columbia, to the value of the following:

Salaries

D. G. Allen and E. Ascroft	\$700.00
Assays	83.55
Room and board	23.92
Vehicle Expense and gas	56.67
Report typing, draughting, compilation 3 hours @ \$15/hour	45.00
Maps, photocopying	6.00
	<hr/>
	\$915.14



Donald G. Allen  
P. Eng. (B. C.)