

84-#617 - #12444



SAWYER CONSULTANTS INC.

7/85

GEOCHEMICAL, GEOLOGICAL and GEOPHYSICAL
ASSESSMENT REPORT

on the
RAFT 1 and RAFT 2 Claims
Nitinat River Area
Victoria Mining Division, B.C.

NTS 92 F/2
Latitude 49° 03' N
Longitude 124° 35' W

of

LODE RESOURCE CORPORATION
(Owner and Operator)

by

Gordon D. House, M.S., F.G.A.C.

of

SAWYER CONSULTANTS INC.

August 3rd, 1984

**GEOLOGICAL BRANCH
ASSESSMENT REPORT**

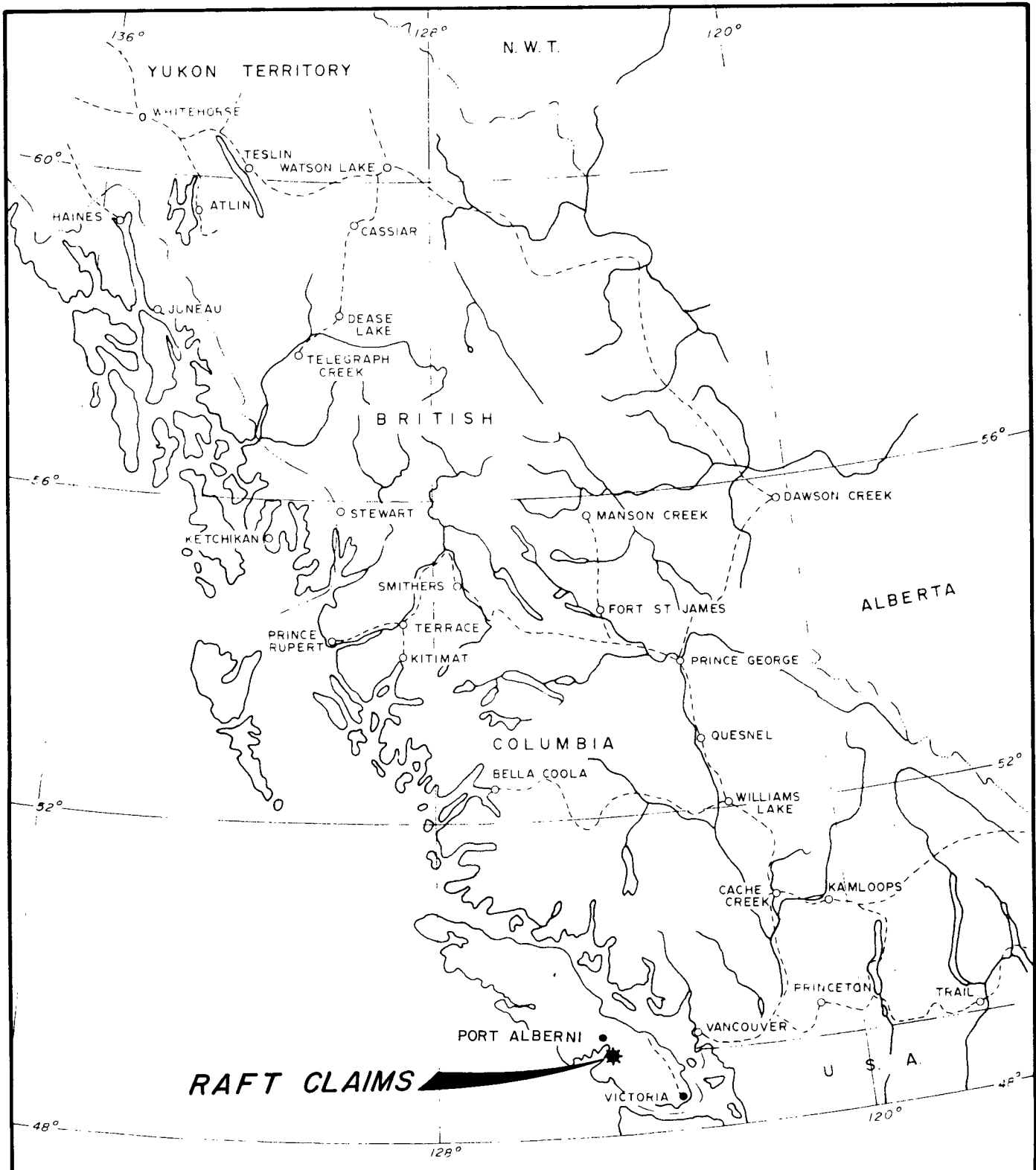
12,444

TABLE OF CONTENTS

	Page
INTRODUCTION	2 /
PROPERTY AND OWNERSHIP	4 /
LOCATION AND ACCESS	4 /
PHYSIOGRAPHY	4 /
HISTORY AND PREVIOUS WORK	5 /
REGIONAL GEOLOGY	6 /
GEOCHEMICAL SURVEY - 1983	7 /
GEOPHYSICAL SURVEY - 1983	8
GEOLOGICAL MAPPING - 1983	8
DISCUSSION OF RESULTS	8
Geochemical Sampling	9
Geophysical Survey	9
Geological Mapping	10
CONCLUSIONS AND RECOMMENDATIONS	10
CERTIFICATE OF QUALIFICATION	12
BIBLIOGRAPHY	13
APPENDIX A - Copy of Geochemical Analyses Report	
APPENDIX B - Statement of Expenditure and List of Personnel for Assessment Purposes	
APPENDIX C - Geophysical Survey; Instrument and Survey Specifications	

List of Illustrations

Figure 1	General Location Sketch; Scale 1 inch = 125 miles	1 /
Figure 2	Claim Sketch; Scale 1:50,000	3 /
Map 1	Gold in Soils and Stream Sediments; Scale 1:10,000	in pocket
Map 2	Silver in Soil and Stream Sediments; Scale 1:10,000	in pocket
Map 3	Copper in Soil and Stream Sediments; Scale 1:10,000	in pocket
Map 4	Lead in Soil and Stream Sediments; Scale 1:10,000	in pocket
Map 5	Zinc in Soil and Stream Sediments; Scale 1:10,000	in pocket
Map 6	Magnetometer Survey and VLF-Electromagnetometer Survey by Glen E. White Geophysical Consulting & Services Ltd.; Scale 1:1,000	in pocket
Map 7	Geological Sketch Map; Scale 1:10,000	in pocket



RAFT CLAIMS

LODE RESOURCE CORPORATION

RAFT 1 AND 2 CLAIMS

VICTORIA MINING DIVISION, B.C.

GENERAL LOCATION SKETCH

SCALE 1" = 125 MILES

FIGURE 1

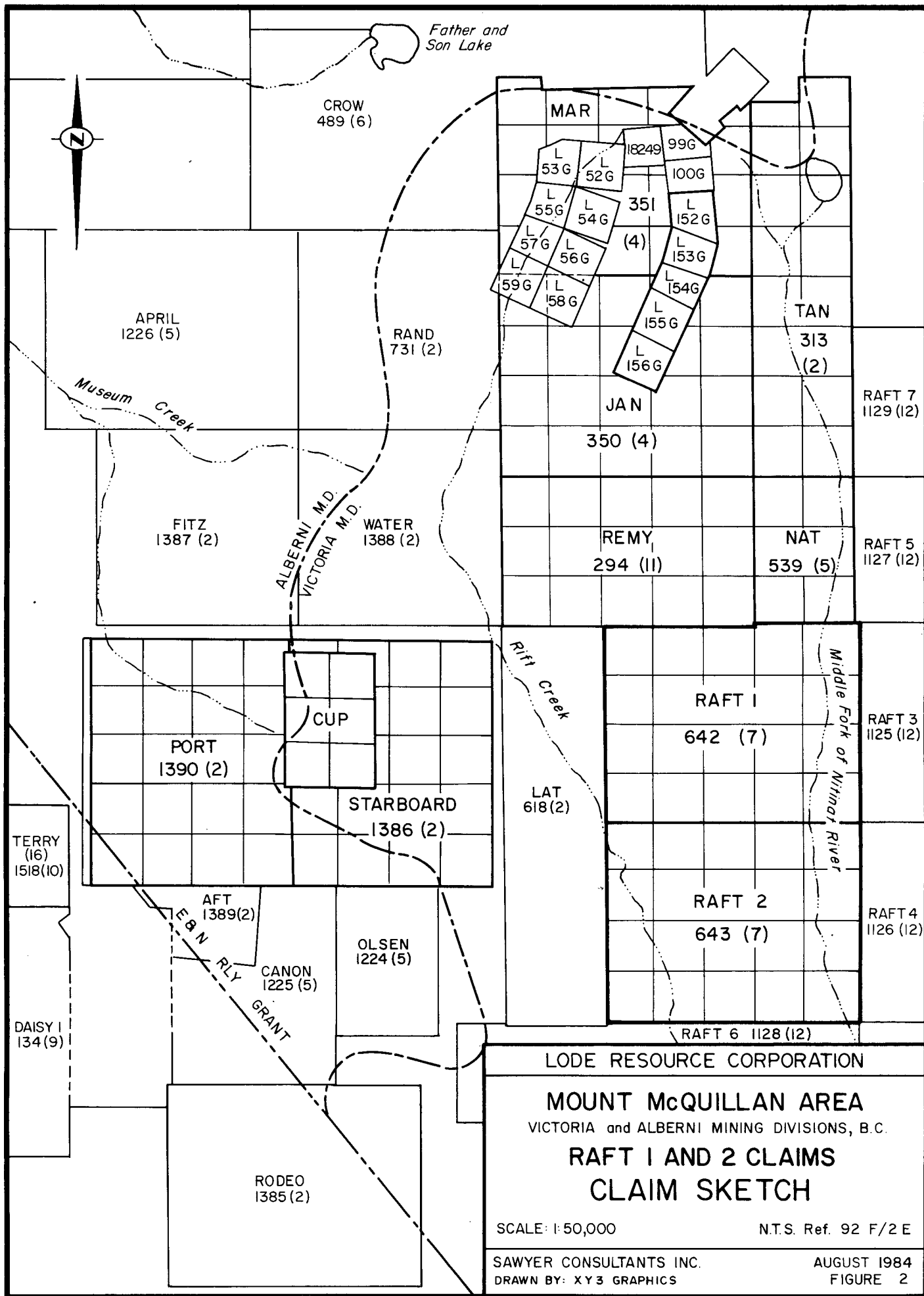
INTRODUCTION

The Raft 1 and Raft 2 claims were staked in July 1982 to cover apparently anomalous geochemical values in streams, detailed by Gunnex Ltd. in the 1960's during regional exploration programs. The Raft 1 and Raft 2 claims were acquired by the predecessor company of Lode Resource Corporation in 1983 in order to consolidate their land holdings in the Mount McQuillan - Nitinat River area of Vancouver Island.

A program of geochemical silt and soil sampling carried out over the Raft claims in July 1983 outlined several geochemically anomalous areas. During the period 23rd September to 16th October, 1983 a limited program of follow-up geochemical soil sampling was carried out over one of these anomalous areas while geochemical silt sampling was carried out on tributary creeks to Rift Creek, west of the claims. Preliminary geological mapping was also carried out and a geophysical traverse was run from a massive pyrite showing across several geochemically anomalous areas on the Raft 1 claim to test the geophysical response.

These limited surveys were carried out when time permitted while a major diamond drilling program was underway on the Mar claim of Lode Resource Corporation, and were helicopter supported from the drill camp.

This report summarizes the work carried out and the results obtained. Costs of this work were paid for by Lode Resource Corporation of 1020 - 475 Howe Street, Vancouver, B.C., V6C 2B3.



PROPERTY AND OWNERSHIP

The property consists of two claims, the Raft 1 and Raft 2, of 20 units each, and Record Nos. 642 and 643 respectively, located in the Victoria Mining Division.

The claims were staked by Brent Schorn in July 1982 and were acquired by the predecessor company of Lode Resource Corporation in 1983. The registered owner of the claims is Lode Resource Corporation.

LOCATION AND ACCESS

The Raft 1 and Raft 2 claims are located about 25 kilometres southeast of Port Alberni on the West Coast of Vancouver Island, and cover the steep ridge running south from the peak of Mount McQuillan, between the Middle Fork of the Nitinat River and Rift Creek.

The claims are accessible by logging roads constructed by the MacMillan Bloedel Company on whose timber rights the claims lie. The area has been logged over and the logging roads on the claims have been abandoned and have deteriorated.

The west side of the Raft 1 and Raft 2 claims is accessible by the Museum Creek Road which passes up the west side of Rift Creek after following the north bank of Museum Creek from its confluence with Franklin River. The east side of the claims and the ridge is accessible by the Nitinat River road from Cowichan Lake which follows the Middle Fork of the Nitinat River to a point a short distance up river from the northern boundary of the Raft 1 claim.

The ridge on the claims is covered with abandoned criss-crossing logging roads which are usable on foot only.

PHYSIOGRAPHY

The Raft 1 and Raft 2 claims lie within the western coastal forest region characterized by fairly abundant rainfall and heavy growth of larger timber. Elevations on the claims ranges from about 200 metres on the Middle Fork of the Nitinat River to over 1000 metres on the north boundary of the claims on the ridge top. Topography is quite steep with local relief precipitous. Streams are confined in fairly narrow steep sided valleys with smaller tributaries occupying V-shaped gullies with abundant waterfalls.

Logging over the area covered by the Raft 1 and Raft 2 claims in the past decade has left criss-crossing logging trails on the steep sided ridge and logging slash and debris from road building have blocked and changed the courses of many of the smaller tributary creeks. Logging slash on the hillsides and erosion of the clear cut areas have made travel extremely difficult off the logging trails.

SAWYER CONSULTANTS INC.

HISTORY AND PREVIOUS WORK

The Raft claims lie within the original Esquimalt and Nanaimo Railway Land Grant, much of which has been relinquished. The boundaries of portions retained are not known but one such portion is believed to cover an area north of Mount McQuillan, northwest of the Raft claims.

Mineral prospecting has been carried out in the area of China Creek and Franklin Creek since placer gold was mined in the 1860's. Development of lode gold prospects followed and up to eight properties had gone into production by 1940. The artificially low gold price and low tonnage potential of the vein gold deposits hindered further development.

In the 1960's Gunnex Ltd. acquired prospecting rights on certain parts of the E&N Land Grants under terms of a joint venture or farm-out agreement with Canadian Pacific. Work done by Gunnex Ltd. up to 1965 included a helicopter-borne low level aeromagnetic survey, a regional geochemical soil and silt sampling program and geological mapping combined with prospect and mineral showing examinations. Reports and maps covering these activities were made available to Lode's predecessor company, Jan Resources Ltd., and formed the basis of selecting areas for examination and further work.

The Gunnex Ltd. geochemical survey covered most of the main creeks and drainages, and included both stream sediment and soil samples collected along the main drainages and creeks. Results from the survey showed most of the creeks draining the ridge trending south from Mount McQuillan, covered partly by the Raft claims, contained anomalous Total Heavy Metal values. There was no follow-up on these anomalous geochemical values and no further work was carried out.

The 1962 aeromagnetic survey was flown by helicopter on quarter mile line spacing and mean terrain clearance of 500 feet. Results were plotted at 20 gamma contour intervals. A prominent north-south magnetic high is roughly coincident with the peak and high points of the ridge of Mount McQuillan lying north of the Raft claims. Several old properties and prospects are associated with the edges of the magnetic high zone.

Exploration work has been carried out on the Jan, Mar, and Remy claims, adjoining the Raft claims to the north, since 1979 by the predecessor company of Lode Resource Corporation. The exploration has included prospecting and geochemical sampling programs over areas of former showings and prospects, with detailed sampling of veins over those old prospects. Results from the programs in 1980 were sufficiently encouraging that diamond drill testing of these vein systems was carried out in late 1980 - early 1981. Subsequent exploration included further geochemical sampling programs and a drill program on one vein system in late 1983.

The Raft 1 and Raft 2 claims adjoin the Mar and Jan claims on the south, covering the southerly extension of Mount McQuillan ridge. Previous to the work carried out by Lode Resource Corporation there was no systematic follow-up work reported on the Total Heavy Metal anomalies outlined in the creeks draining Mount McQuillan ridge by exploration programs during the 1960's by another company.

REGIONAL GEOLOGY

The Mount McQuillan area of Vancouver Island is underlain predominantly by volcanic rocks which have been mapped and grouped as part of the Sicker Series by Muller (1968). A recent publication by Muller (1980) has refined the geological work and re-defined some of the sub-divisions of the Sicker Group.

The Sicker Group rocks are of Palaeozoic age and as recently re-defined the Group has been sub-divided into four units as follows:

Buttle Lake Formation: limestone, calcarenitic, crinoidal, commonly recrystallized; interbedded with subordinate or equal thicknesses of calcareous siltstone and chert; some diabase sills;

Sediment-Sill Unit: thinly bedded to massive argillite, siltstone and chert with interlayered sills of diabase;

Myra Formation: basic to rhyodacitic banded tuff, breccia and (?) lava; thinly bedded to massive argillite, siltstone, chert;

Nitinat Formation: metabasaltic lavas, pillowed or agglomeratic, commonly with large conspicuous unaltered pyroxene phenocrysts and amygdules of quartz and dark green minerals; minor massive to banded tuff.

The lowest of these four units is comprised almost entirely of intermediate to basic volcanics and Muller has proposed that the name Nitinat Formation, formerly used in a different context, be applied to rocks of this unit. Overlying the Nitinat volcanics are a thick succession of bedded volcanic and sedimentary rocks which include volcanic (rhyolitic to dacitic) breccias, tuff and flows as well as argillite, siltstone, greywacke and minor conglomerate. The name Myra Formation has been proposed by Muller for this succession which probably is unconformable on the Nitinat Formation. It is of interest that the Myra Formation are the host rocks to the Westmin Resources massive sulphide deposits in the Buttle Lake area.

The geology of the Raft claims area is of considerable interest; there was no detailed geological mapping in the area until the 1983 program on the Mar claim of Lode Resource Corporation. The earlier 1983 geochemical sampling program was the only follow-up on the geochemically anomalous creeks outlined by the Gunnex Ltd. program in the 1960's.

Earlier geological mapping carried out by Gunnex Ltd. in the 1960's indicated that rock units similar to the units hosting the Westmin Resources deposit at Buttle Lake occurred on Mount McQuillan ridge. These units were formalized as the Myra Formation of the Sicker Group by J.E. Muller of the Geological Survey of Canada in 1979 (Muller, 1980).

GEOCHEMICAL SURVEY - 1983

A geochemical soil and silt sampling program was carried out on the Raft 1 and Raft 2 claims during the period 19th July to 24th July, 1983. Results of the survey outlined several geochemically anomalous areas which were roughly coincident with the earlier Total Heavy Metal anomalies outlined by Gunnex Ltd. in the 1960's.

During the period 24th September to 30th September, 1983 a follow-up program of geochemical soil and silt sampling was carried out over several of these anomalous areas. This follow-up program was carried out while a major diamond drilling program was being carried out by Lode Resource Corporation on the Mar claim to the north of the adjoining Remy and Jan claims. The sampling program was helicopter-supported from the drill camp, but bad flying weather cut short the program.

Several lines of geochemical soil samples were run across the western side of Mount McQuillan ridge on the Raft 1 claim to test anomalous zones outlined during the earlier survey. The soil samples were taken from the "B" horizon in an undisturbed area where soil profiles could be distinguished. Samples were collected in waterproof Kraft paper envelopes marked with the sample numbers, and the locations plotted on field maps.

Silt samples were collected from creeks flowing west off Mount McQuillan ridge and tributary to Rift Creek. The locations are off the Raft claims but drain areas of the ridge which lie within the Raft claims. The silt samples were collected from active stream sediments and put into waterproof Kraft paper envelopes marked with the sample numbers, and the locations were carefully plotted on field maps.

The samples were delivered to Bondar-Clegg and Company Ltd. of North Vancouver, B.C. and submitted for geochemical analyses for copper, lead, zinc, silver, and gold. The samples were dried and sieved, with the -80 mesh fraction used for the analysis. Metal extraction for copper, lead, zinc, and silver were made using HNO_3 -HCl Hot Extraction. Concentrations were determined in parts per million by atomic absorption techniques. Metal extraction for gold was made using Aqua Regia with concentrations determined in parts per billion by Fire Assay and atomic absorption techniques. A copy of the Geochemical Analyses report is included as Appendix A.

The results were plotted on 1:10,000 maps made from enlargements of the area of interest on the Department of Energy, Mines and

Resources Canada map, NTS 92F/2 - Alberni Inlet, Edition 4. The results from the two surveys are combined on the Geochemical Maps, Maps 1 to 5, Gold, Silver, Copper, Lead, and Zinc for soil and stream sediment samples, with the samples taken during late September 1983 distinguished from the samples taken earlier in July, 1983. The results have been contoured at values indicated in the legend for each map which represent statistical values arrived at by H. Laanela in his February 1984 report.

GEOPHYSICAL SURVEY - 1983

During October 1983 a geophysical survey was carried out on the Mar claim of Lode Resource Corporation, concurrent with the diamond drilling program. A geophysical traverse was made on the Raft 1 claim from the area of the massive pyrite outcrop, Brent's showing, to the northwest across several geochemically anomalous areas.

The magnetometer and VLF-EM surveys were carried out by Glen E. White Geophysical Consulting and Services Ltd. of Richmond, B.C. The traverse line was put in using compass and topofil chain for control. The instrument and survey specifications are outlined in Appendix C of this report and the results are plotted on Map 6 at a scale of 1:1,000.

GEOLOGICAL MAPPING - 1983

In September and October 1983 a limited geological mapping and prospecting program was carried out on the Raft 1 and Raft 2 claims by the geologist in charge of the diamond drilling program on the Mar claim of Lode Resource Corporation. The geological mapping was helicopter-supported and was based at the drill camp. Bad flying weather cut short the program but the results of mapping are plotted on Map 7, a preliminary Geological Sketch Map, at a scale of 1:10,000.

The main emphasis of the geological mapping was to check areas of geochemically anomalous values to determine the causative reasons and to check if the favourable Myra Formation volcanics underlay the southern extension of Mount McQuillan ridge on the Raft 1 and Raft 2 claims.

DISCUSSION OF RESULTS

The exploration programs carried out on the Raft 1 and Raft 2 claims during late September - October 1983 have provided encouraging information, which will be discussed separately below.

1. Geochemical Sampling

The follow-up geochemical soil and silt sampling programs carried out during late September 1983 confirmed the geochemically anomalous values obtained in the July 1983 surveys. The soil surveys, taken on the west side of the ridge on the Raft 1 claim, were intended to test the geochemical stream sediment anomalies previously outlined.

The results indicate that there is a zone of geochemically anomalous values in lead, zinc, and silver in this area with an indication that there may be anomalous values in gold associated with one of the tributary creeks.

The silt samples taken on tributary creeks of Rift Creek, draining the Raft claims, also confirm the geochemically anomalous zones outlined in July 1983 with values anomalous in gold, silver, copper, and lead. It should be noted that one tributary creek has geochemically anomalous gold values in the September 1983 sample taken near the headwaters.

The results from the follow-up geochemical soil and stream sediment sampling survey have successfully confirmed the earlier July 1983 survey and indicate that further exploration is warranted.

2. Geophysical Survey

The geophysical traverse consisted of a magnetometer survey and a VLF-EM survey run on one line on the Raft 1 claim and running from the ridge top to the area of the massive pyrite outcrop, Brent's showing, and crossing several geochemically anomalous areas.

The results of the survey, shown on Map 6, cannot indicate any trend directions but it has shown that there are at least three EM conductors and several magnetically anomalous areas.

The EM conductors at around 1+00E and 3+00E on the line occur in a geochemically anomalous zone and may be related to shear zones within dacitic volcanics. The magnetic highs around 1+00E and 2+00E may be related to more basic dykes within the volcanics while the magnetic "cross over" occurring around 6+00E is related to a geological contact mapped in a road cut where acidic volcanics and cherty tuffs are in contact with massive andesites. Other magnetic highs to the end of the traverse at Brent's showing are apparently caused by basic dykes which have been mapped in the area.

This limited geophysical survey indicates that a more sophisticated electromagnetic survey such as the Crone shoot-back system may prove useful in detecting shear and fault zones on the overburden covered hillsides. Such shear zones may be associated with mineralized quartz veins or lenses of massive sulphides.

3. Geological Mapping

The reconnaissance geological mapping carried out over geochemically anomalous zones on the Raft 1 and Raft 2 claims during late September 1983 has been combined with information from the limited mapping carried out in July 1983 to produce the Geological Sketch Map, Map 7.

The mapping shows that there is strong structural control over the property, with the northwest trending shear/fault zones forming the boundaries of Mount McQuillan ridge and the major river valleys. These faults also control the lithologies to a large extent, with felsic volcanics and tuffs mapped on the west side of the claims which are thought to represent tectonic slices of Myra Formation rocks. On the east side of the claims there are outcrops of Sicker Group Volcanics and sediments bounded by strongly sheared chloritic schist zones, also representative of Myra Formation rocks but including underlying andesite volcanics of Nitinat Formation.

Outcrops of andesitic? pillow lavas to the west are believed to be part of the stratigraphically higher Vancouver Volcanics while limestones mapped in Rift Creek valley are known to extend south onto Lode Resource Corporation's Port and Starboard claims and is part of the Buttle Lake Formation, the Buttle Lake Limestone.

Sufficient mapping has not been carried out to date to interpret the complex structural picture on the Raft 1 and Raft 2 claims other than the indication that Mount McQuillan ridge appears to represent an antiformal arch bounded by faulting that exposes a more complete, and complex stratigraphic column than that seen elsewhere in the area.

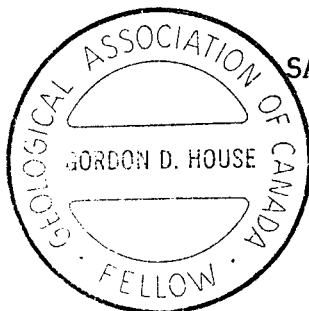
CONCLUSIONS AND RECOMMENDATIONS

The geochemical, geophysical, and geological surveys carried out over the Raft 1 and Raft 2 claims in late September - early October 1983 have served to confirm the geochemically anomalous zones while the limited geophysical traverse indicates another method of mapping the complex structure on the overburden covered side hills and slopes. Geological mapping indicates the complexity of the structure but does show that the complexity may be due to tectonic slices of different stratigraphic horizons juxtaposed in random orientation. Once this fact is accepted it should be possible with more detailed grid controlled mapping to sort out the apparently complex stratigraphy.

The Raft 1 and Raft 2 claims are believed to contain precious metal mineralization of several types, the most important being the quartz-carbonate vein systems associated with the major shear/fault zones while the massive sulphide type deposits of volcanogenic origin with associated high precious metal values are almost as important.

A program of grid line cutting followed by detailed geo-chemical soil sampling and detailed geological mapping is recommended for the Raft 1 and Raft 2 claims, with geophysical surveying utilizing a Crone shoot back electromagnetic survey, or CEM survey, run over areas of interest.

Respectfully submitted,



SAWYER CONSULTANTS INC.

A handwritten signature in cursive script, appearing to read "Gordon D. House", with a horizontal line underneath.

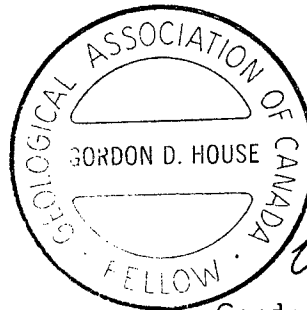
Gordon D. House, M.S., F.G.A.C.

SAWYER CONSULTANTS INC.

CERTIFICATE OF QUALIFICATION

I, Gordon D. House, of North Vancouver, British Columbia,
DO HEREBY CERTIFY:

1. That I am a Consulting Geologist, a graduate of Trinity College, Dublin, in 1961 with a B.A. in Honors Natural Science - Geology. I received a M.S. degree in Geology from the University of Alaska, Fairbanks, in 1980.
2. That I am a Member of The Institution of Mining and Metallurgy, London, since 1964, and a Registered Chartered Engineer with the Council of Engineering Institutions, London. I am a Fellow of the Geological Society, London; a Member of the Society of Mining Engineers of the American Institute of Mining, Metallurgical and Petroleum Engineers; a Member of the Canadian Institute of Mining and Metallurgy; and a Fellow of the Geological Association of Canada.
3. That I have practised my profession as a Geologist since 1962 in Ireland and West Africa; since 1965 in British Columbia, Yukon, Northwest Territories, Saskatchewan, Manitoba, Ontario, Alaska, Arizona, California, Nevada and Idaho. I have undertaken professional visits to Germany, Australia, New Zealand, Fiji, and South Africa.
4. That the information, opinions and recommendations in this report are based on field work carried out by others in September and October 1983, on work previously carried out in the area by Sawyer Consultants Inc. in 1979, 1980, 1981, 1982, and 1983, and on work carried out by me in the Mount McQuillan area in 1983 and 1984.
5. That I have no direct or indirect interest in any of the subject properties of this report, nor in the shares or securities of Lode Resource Corporation, or associated companies, nor do I expect to receive any such interest.



Gordon D. House

Gordon D. House, M.S., F.G.A.C.

Dated at Vancouver, British Columbia, this 3rd day of August, 1984.

SAWYER CONSULTANTS INC.

SELECTED BIBLIOGRAPHY

- Carson, D.J.T., 1972: The Plutonic rocks of Vancouver Island; Geol. Surv. Can., Paper 72-44.
- House, G.D., 1983: Geochemical Assessment Report on the Raft 1 and Raft 2 Claims, Nitinat River Area, Victoria Mining Division, B.C.; report by Sawyer Consultants Inc. for Jan Resources Ltd., Aug. 18, 1983.
- Laanela, H., 1984: Summary Report on 1983 Property Exploration Programs in the Mount McQuillan Area, Victoria and Alberni Mining Divisions, Vancouver Island, B.C.; report for Lode Resource Corporation, Feb. 12, 1984.
- , 1965: Property examination reports on a number of prospects in the Mount McQuillan area; internal company report to Gunnex Limited.
- Muller, J.E., 1980: The Palaeozoic Sicker Group of Vancouver Island, British Columbia; Geol. Surv. Can. Paper 79-30.
- , 1969: Geology and mineral deposits of the Alberni area, British Columbia; Geol. Surv. Can. Paper 68-50.
- Sawyer, J.B.P., and House, G.D., 1984: Report on Property Exploration Programs in the Mount McQuillan - Mount Spencer Area, Victoria and Alberni Mining Divisions, Vancouver Island, B.C.; report by Sawyer Consultants Inc. for Lode Resource Corporation, May 31, 1984.
- , 1983: Report on Property Exploration Programs in the Mount McQuillan - Mount Spencer Area, Victoria and Alberni Mining Divisions, Vancouver Island, B.C.; report by Sawyer Consultants Inc. for Jan Resources Ltd., Apr. 25, 1983.

- Seraphim, R.H., 1980: Western Mines - Myra, Lynx and Price deposits; Can. Inst. of Min. & Met., Vol. 73, No. 824, pp. 71-86.
- Stevenson, J.S., 1945: Geology and ore deposits of the China Creek area, Vancouver Island, British Columbia; Annual Report, 1944, Minister of Mines, British Columbia.

APPENDIX A

Copy of Geochemical Analyses Report

SAWYER CONSULTANTS INC.

APPENDIX B

Statement of Expenditure

and

List of Personnel

for

Assessment Purposes

SAWYER CONSULTANTS INC.

Statement of Expenditure

The expenditures itemized below were incurred by Lode Resource Corporation in connection with a follow-up geochemical soil and silt sampling program, a limited geophysical survey and reconnaissance geological mapping carried out on the Raft 1 and Raft 2 claims in the period Sept. 23, 1983 to Jan. 20, 1984.

Geochemical Sampling - (Sept. 28-30, 1983, and Oct. 10, 1983)

Geologist - 2 days @ \$350.00/day	\$ 700.00	
Assistant - 1 day @ \$150.00/day	150.00	
Crew Expenses:		
Room and board - 3 man days @ \$50.00/man/day	150.00	
Transport - helicopter pro-rated to ½ hour @ \$450.00/hour	225.00	
Geochemical Analyses:		
25 samples @ \$11.75 per sample (Cu,Pb,Zn,Ag,Au)	293.75	
	<u>1,518.75</u>	\$1,518.75

Geophysical Surveying - (Oct. 16, 1983)

Geophysicist - 1 day @ \$375.00/day (includes mob/demob)	\$375.00	
Assistant - 1 day @ \$150.00/day	150.00	
Room and board - 2 man days @ \$50.00/man day	100.00	
Transport - helicopter, pro-rated to 15 minutes @ \$450.00/hour	112.50	
	<u>\$737.50</u>	737.50

Geological Mapping - (Sept. 24 to Oct. 16, 1983,
Jan. 16-17, 1984)

Geologist - 3½ days @ \$300.00 per day	\$1,050.00	
Room and board - 3 days @ \$50.00 per day	150.00	
Travel - helicopter, pro-rated to 45 minutes @ \$450.00/hour	337.50	
	<u>\$1,537.50</u>	1,537.50
		\$3,793.75

Office Compilation - (July 24, 1984)

Geologist - 1 day @ \$350.00/day	\$350.00	
Secretarial	250.00	
Report preparation - drafting, map printing, photocopying, etc.	200.00	
	<u>\$800.00</u>	800.00

Total

\$4,593.75

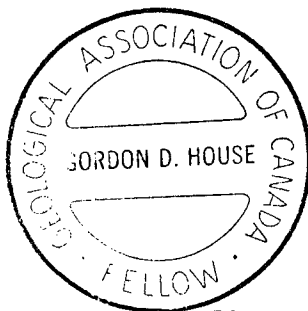


Gordon D. House
Gordon D. House, M.S., F.G.A.C.
Agent for Lode Resource Corporation

SAWYER CONSULTANTS INC.

List of Personnel

H. Laanela, Geologist (Sept. 24, 28-29, Oct. 10, 1983) Sampling, mapping, compilation 3½ days @ \$300.00 per day	\$1,050.00
K. Jones, Geophysicist (Oct. 16, 1983) Magnetometer and E.M. survey 1 day @ \$375.00 per day (includes mob/demob)	375.00
Ramon Garcia, Assistant (Sept. 29, 30, Oct. 16, 1983) Sampling, geophysical survey 3 days @ \$150.00 per day	450.00
Gordon D. House, Consulting Geologist (July 24, 1984) Consulting, report preparation 1 day @ \$350.00 per day	<u>350.00</u>
Total	<u>\$2,225.00</u>



Gordon D. House

 Gordon D. House, M.S., F.G.A.C.
 Agent for Lode Resource Corporation

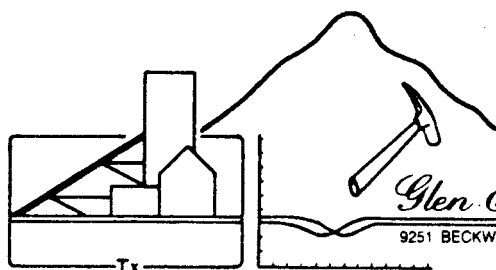
APPENDIX C

Geophysical Survey

Instrument and Survey Specifications

SAWYER CONSULTANTS INC.

RECEIVED JUL 24 1984



Glen E. White
GEOPHYSICAL CONSULTING & SERVICES LTD
9251 BECKWITH ROAD, RICHMOND, BRITISH COLUMBIA V6X 1V7

(604) 273-1636

RAFT CLAIM

MAGNETOMETER - SCINTREX MF-2 Vertical Field Intensity
Fluxgate Magnetometer

- Station Interval 12.5 m
- Survey Date- Oct. 16, 1983
- Model #753011
- Serial #812201

VLF-EM

- Geonex - EM-16
- Serial #15830
- Station Interval 0-300 (12.5 metres)
300-1100 (25 Metres)
- Transmission Station - Annapolis, Maryland
 - NSS
 - 21.4 Kh_z
- Reading Taken Facing South

A P P E N D I X

Instrument Specifications

MAGNETOMETER

A. Instrument

- (a) Type - Fluxgate
- (b) Make - Scintrex MF-2

B. Specifications

- (a) Measurement - Vertical Magnetic Field
- (b) Range - \pm 100 K gammas in 5 ranges
- (c) Sensitivity - Maximum 20 gammas per scale division
- (d) Accuracy - \pm 10 gammas

C. Survey Procedures

- (a) Method - One and one half hour loops
- (b) Corrections - (i) Base
(ii) Diurnal
- (c) Station relationship - each station read for
intensity of vertical magnetic field.

SURVEY SPECIFICATIONS

The Magnetometer Survey

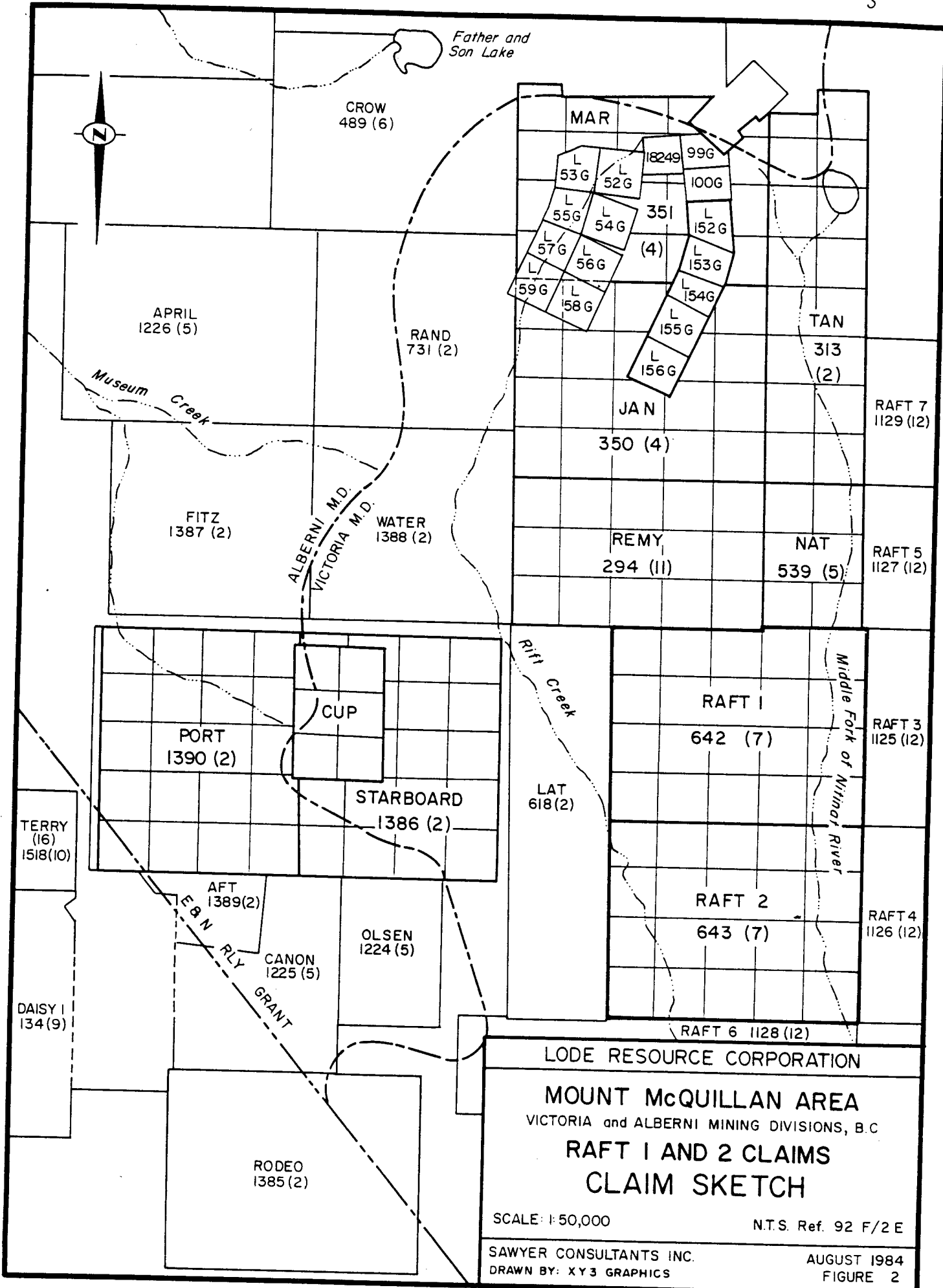
The magnetometer survey was conducted using a scintrex MF-2 Fluxgate magnetometer. This instrument measures the vertical component of the earth's magnetic field to an accuracy of 10 gammas. Corrections for diurnal variation were made by tying into previously established base stations at intervals not exceeding one and one half hours. Readings were taken at 30 m intervals along the traverse lines.

V.L.F. Electromagnetometer Survey

This survey was conducted using a Geonics EM-16 V.L.F. Electromagnetometer. This instrument acts as a receiver only. It utilizes the primary electromagnetic fields generated by VLF marine communication stations. These stations operate at a frequency between 15-25 KHZ, and have a vertical antenna-current resulting in a horizontal primary field. Thus, this VLF - EM measures the dip-angle of the secondary field induced in a conductor.

For maximum coupling, a transmitter station located in the same direction as the geological strike should be selected, since the direction of the horizontal electromagnetic field is perpendicular to the direction of the transmitting station.

Readings were taken at 30 m intervals and the data filtered in the field by the operator as described by D.C. Fraser, Geophysics Vol. 34, No. 6 (December 1969). The advantage of this method is that it removes the dc and attenuates long spatical wave lengths to increase resolution of local anomalies, and phase shifts the dip-angle data by 90 degrees so that cross-overs and inflections will be transformed into peaks to yield contourable quantities.



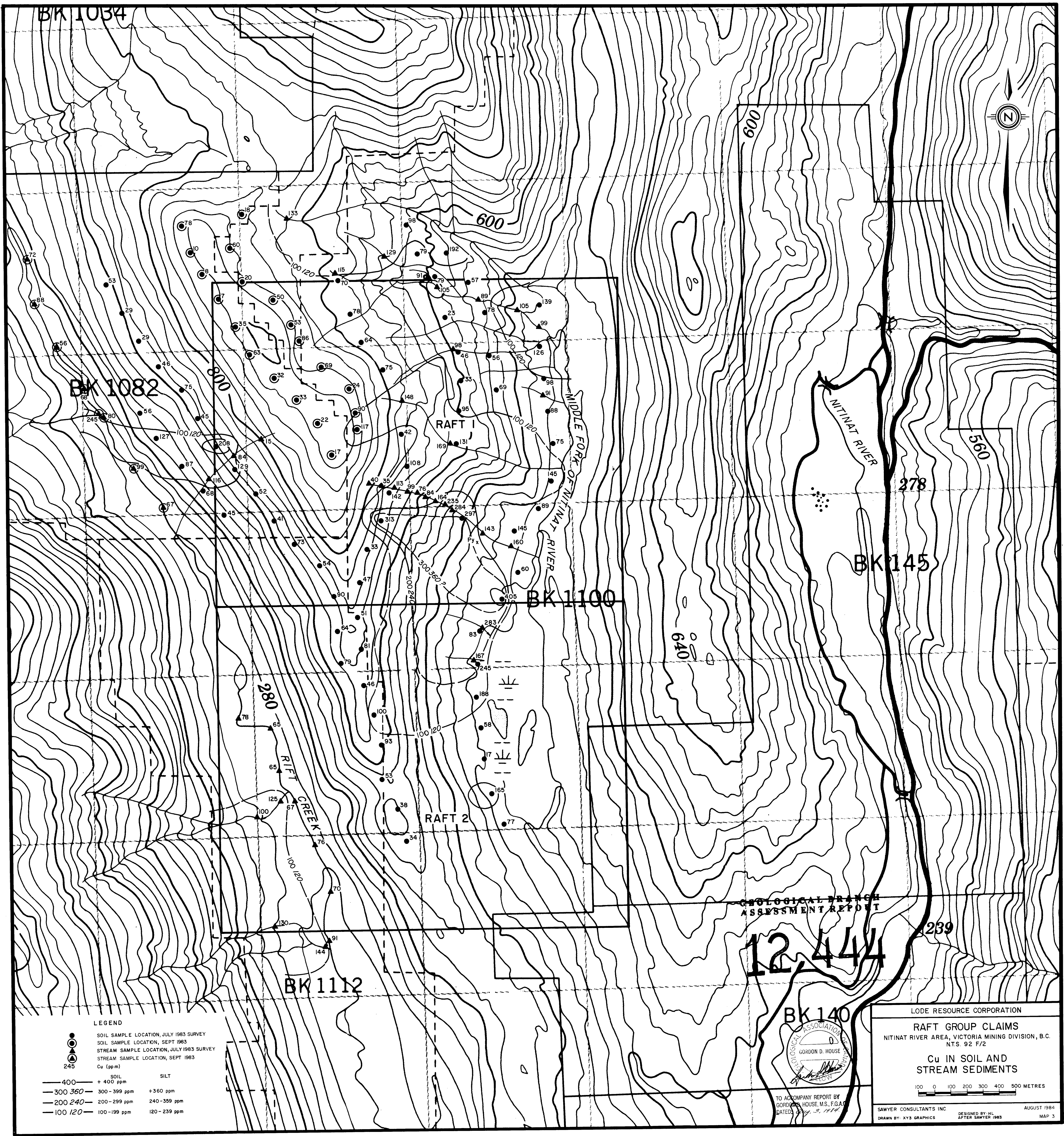
LODE RESOURCE CORPORATION

MOUNT McQUILLAN AREA
 VICTORIA and ALBERNI MINING DIVISIONS, B.C.

RAFT 1 AND 2 CLAIMS
CLAIM SKETCH

SCALE: 1:50,000 N.T.S. Ref. 92 F/2 E

SAWYER CONSULTANTS INC. AUGUST 1984
 DRAWN BY: XY3 GRAPHICS FIGURE 2



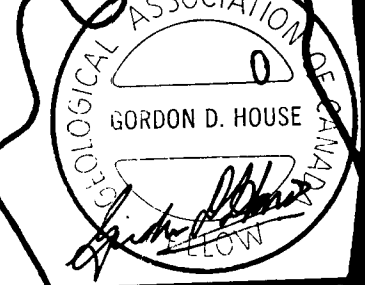
LEGEND

- SOIL SAMPLE LOCATION, JULY 1983 SURVEY
 - SOIL SAMPLE LOCATION, SEPT 1983
 - ▲ STREAM SAMPLE LOCATION, JULY 1983 SURVEY
 - △ STREAM SAMPLE LOCATION, SEPT 1983
 - 245 Cu (ppm)
- | SOIL | | SILT | |
|-------------|---------------|-------------|---------------|
| — 400 — | + 400 ppm | — 360 — | + 360 ppm |
| — 300 360 — | 300 - 399 ppm | — 240 — | 240 - 359 ppm |
| — 200 240 — | 200 - 299 ppm | — 100 120 — | 100 - 199 ppm |
| — 100 120 — | 100 - 199 ppm | | 120 - 239 ppm |

GEOLOGICAL BRANCH
ASSESSMENT REPORT

12,444

BK 140



TO ACCOMPANY REPORT BY
GORDON D. HOUSE, M.S., F.G.A.
DATED Aug. 25, 1984

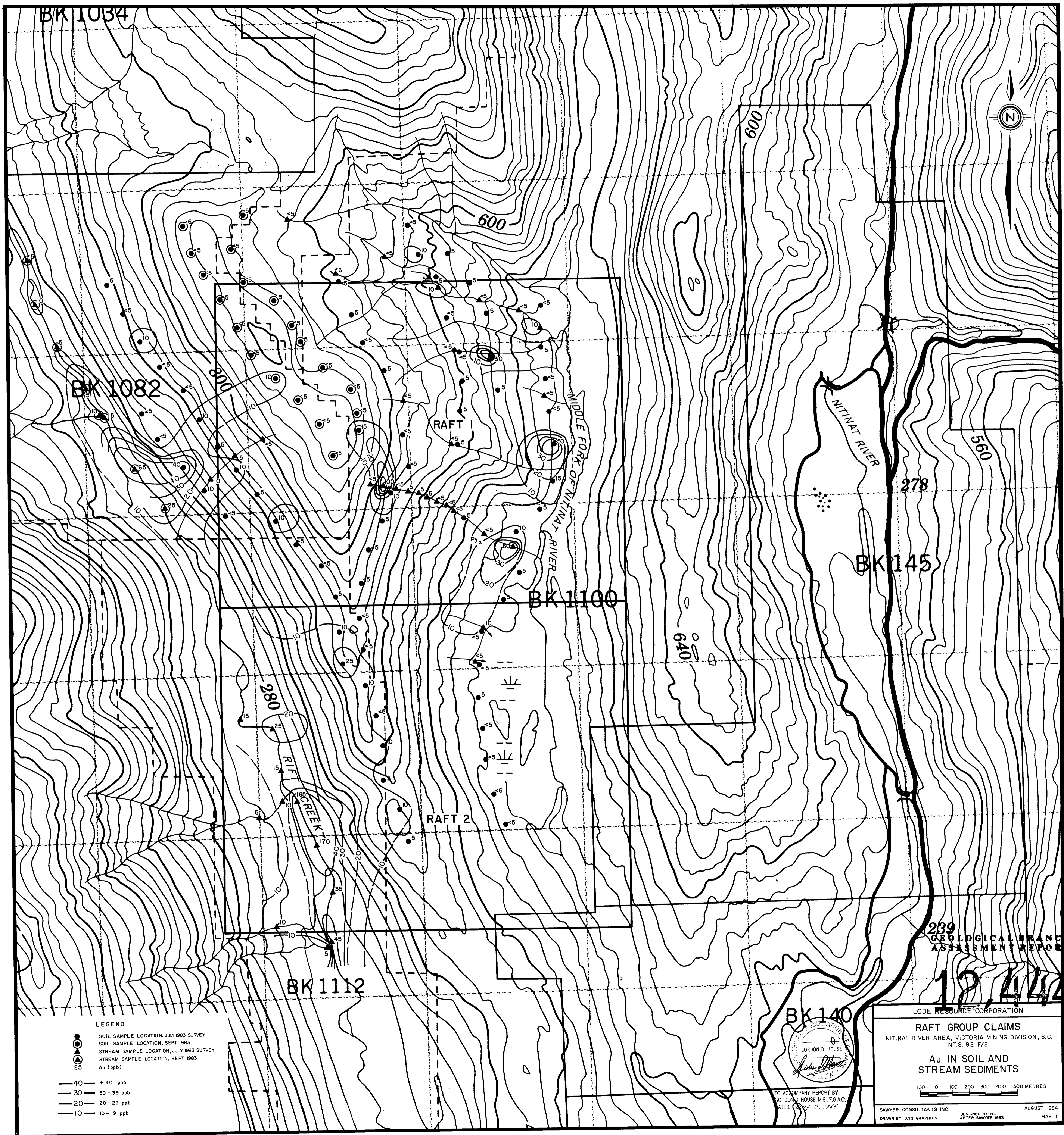
LODE RESOURCE CORPORATION

RAFT GROUP CLAIMS
NITINAT RIVER AREA, VICTORIA MINING DIVISION, B.C.
NTS. 92 F/2

**Cu IN SOIL AND
STREAM SEDIMENTS**

100 0 100 200 300 400 500 METRES

SAWYER CONSULTANTS INC. AUGUST 1984
DRAWN BY: XYS GRAPHICS DESIGNED BY: HL AFTER SAWYER 1983 MAP 3



- LEGEND**
- SOIL SAMPLE LOCATION, JULY 1983 SURVEY
 - SOIL SAMPLE LOCATION, SEPT 1983
 - STREAM SAMPLE LOCATION, JULY 1983 SURVEY
 - STREAM SAMPLE LOCATION, SEPT 1983
 - Au (ppb)
 - 40— + 40 ppb
 - 30— 30 - 39 ppb
 - 20— 20 - 29 ppb
 - 10— 10 - 19 ppb

239
GEOLOGICAL BRANCH
ASSESSMENT REPORT

12,444



TO ACCOMPANY REPORT BY
GORDON D. HOUSE, M.S., F.G.A.C.
DATED: 1984, 3, 1984

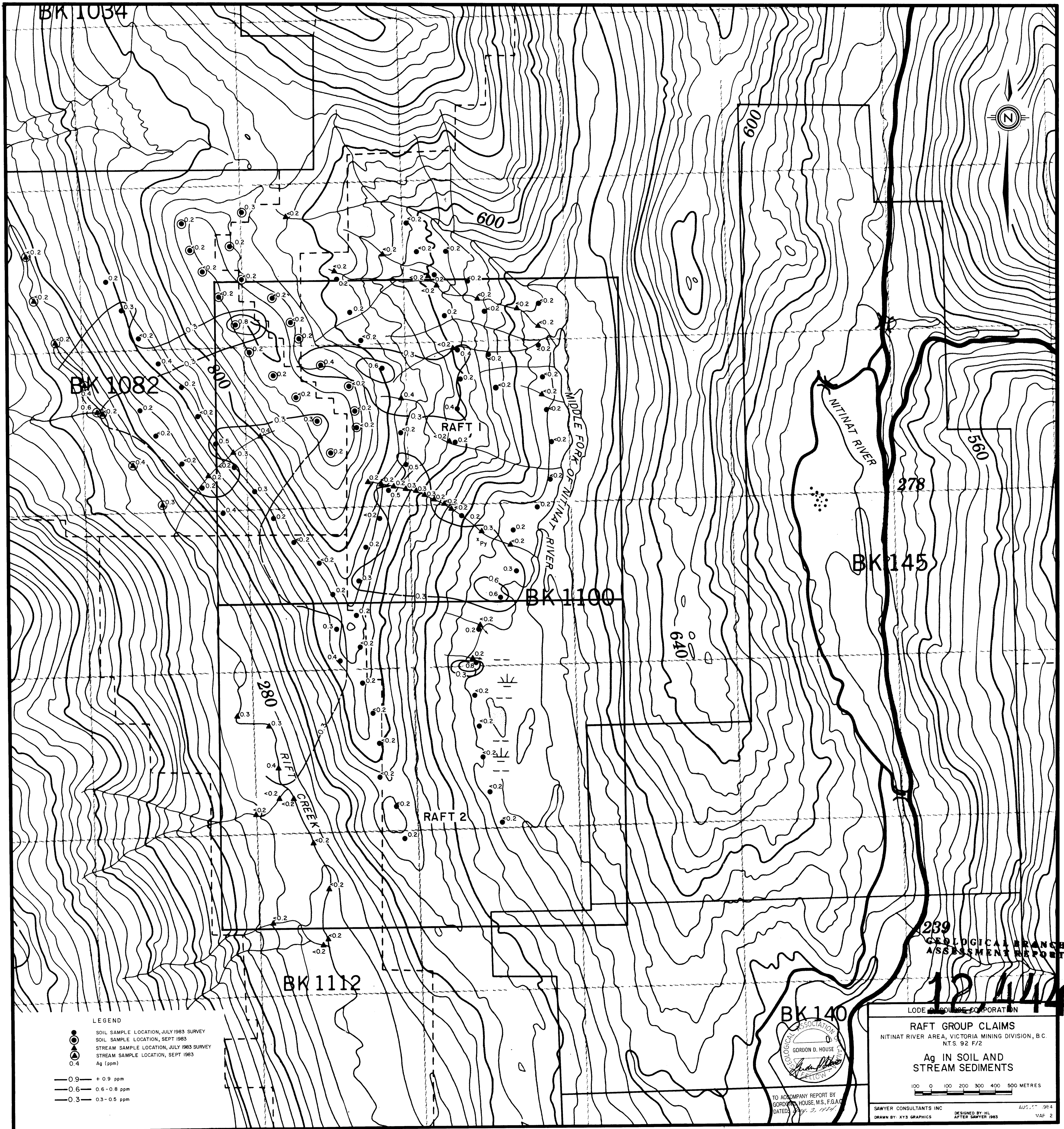
LODE RESOURCE CORPORATION

RAFT GROUP CLAIMS
NITINAT RIVER AREA, VICTORIA MINING DIVISION, B.C.
N.T.S. 92 F/2

**Au IN SOIL AND
STREAM SEDIMENTS**

100 0 100 200 300 400 500 METRES

SAWYER CONSULTANTS INC. AUGUST 1984
DRAWN BY: XYS GRAPHICS DESIGNED BY: HL AFTER SAWYER 1983 MAP 1



LEGEND

- SOIL SAMPLE LOCATION, JULY 1983 SURVEY
- SOIL SAMPLE LOCATION, SEPT 1983
- STREAM SAMPLE LOCATION, JULY 1983 SURVEY
- STREAM SAMPLE LOCATION, SEPT 1983
- Ag (ppm)
- + 0.9 ppm
- 0.6 - 0.8 ppm
- 0.3 - 0.5 ppm

239
GEOLOGICAL BRANCH
ASSESSMENT REPORT

12 444
LODE DEVELOPMENT CORPORATION

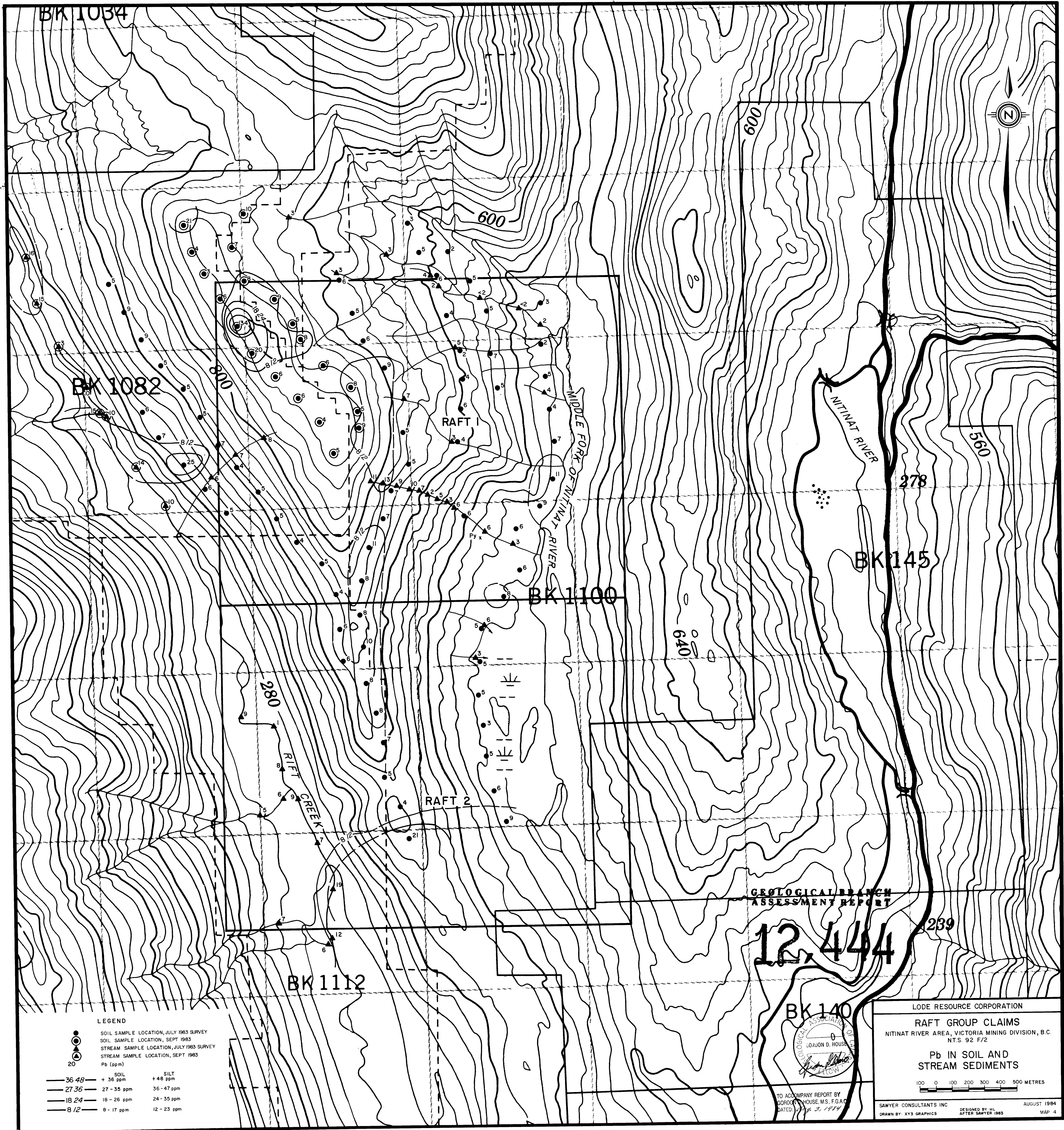
RAFT GROUP CLAIMS
NITINAT RIVER AREA, VICTORIA MINING DIVISION, B.C.
N.T.S. 92 F/2
**Ag IN SOIL AND
STREAM SEDIMENTS**

100 0 100 200 300 400 500 METRES

SAWYER CONSULTANTS INC. DESIGNED BY HL AUG. 17 1984
DRAWN BY: XYS GRAPHICS AFTER SAWYER 1983 VAF 2



TO ACCOMPANY REPORT BY
GORDON D. HOUSE, M.S., F.G.A.C.
DATED: July 3, 1984



BK 1082

RAFT 1

BK 1100

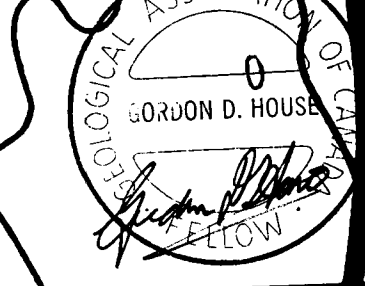
BK 145

BK 1112

GEOLOGICAL BRANCH
ASSESSMENT REPORT

12,444

BK 140



TO ACCOMPANY REPORT BY
GORDON D. HOUSE, M.S., F.G.A.C.
DATED: 1983

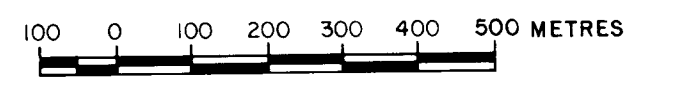
LEGEND

- SOIL SAMPLE LOCATION, JULY 1983 SURVEY
 - SOIL SAMPLE LOCATION, SEPT 1983
 - ▲ STREAM SAMPLE LOCATION, JULY 1983 SURVEY
 - △ STREAM SAMPLE LOCATION, SEPT 1983
- | Pb (ppm) | |
|----------|-------------|
| 36-48 | + 36 ppm |
| 27-36 | 27 - 35 ppm |
| 18-24 | 18 - 26 ppm |
| 8-12 | 8 - 17 ppm |
| 48-54 | + 48 ppm |
| 36-47 | 36 - 47 ppm |
| 24-35 | 24 - 35 ppm |
| 12-23 | 12 - 23 ppm |

LODE RESOURCE CORPORATION

RAFT GROUP CLAIMS
NITINAT RIVER AREA, VICTORIA MINING DIVISION, B.C.
N.T.S. 92 F/2

Pb IN SOIL AND
STREAM SEDIMENTS



SAWYER CONSULTANTS INC. AUGUST 1984
DRAWN BY: XYS GRAPHICS DESIGNED BY: HL AFTER SAWYER 1983 MAP 4

BK 1034

BK 1082

BK 1100

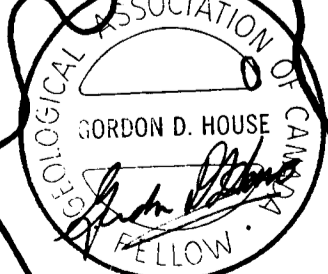
BK 1112

BK 145

GEOLOGICAL BRANCH
ASSESSMENT REPORT

12,444

BK 140



TO ACCOMPANY REPORT BY
GORDON D. HOUSE, M.S., F.G.A.C.
DATED: 29.3.1984

LODE RESOURCE CORPORATION

RAFT GROUP CLAIMS
NITINAT RIVER AREA, VICTORIA MINING DIVISION, B.C.
N.T.S. 92 F/2

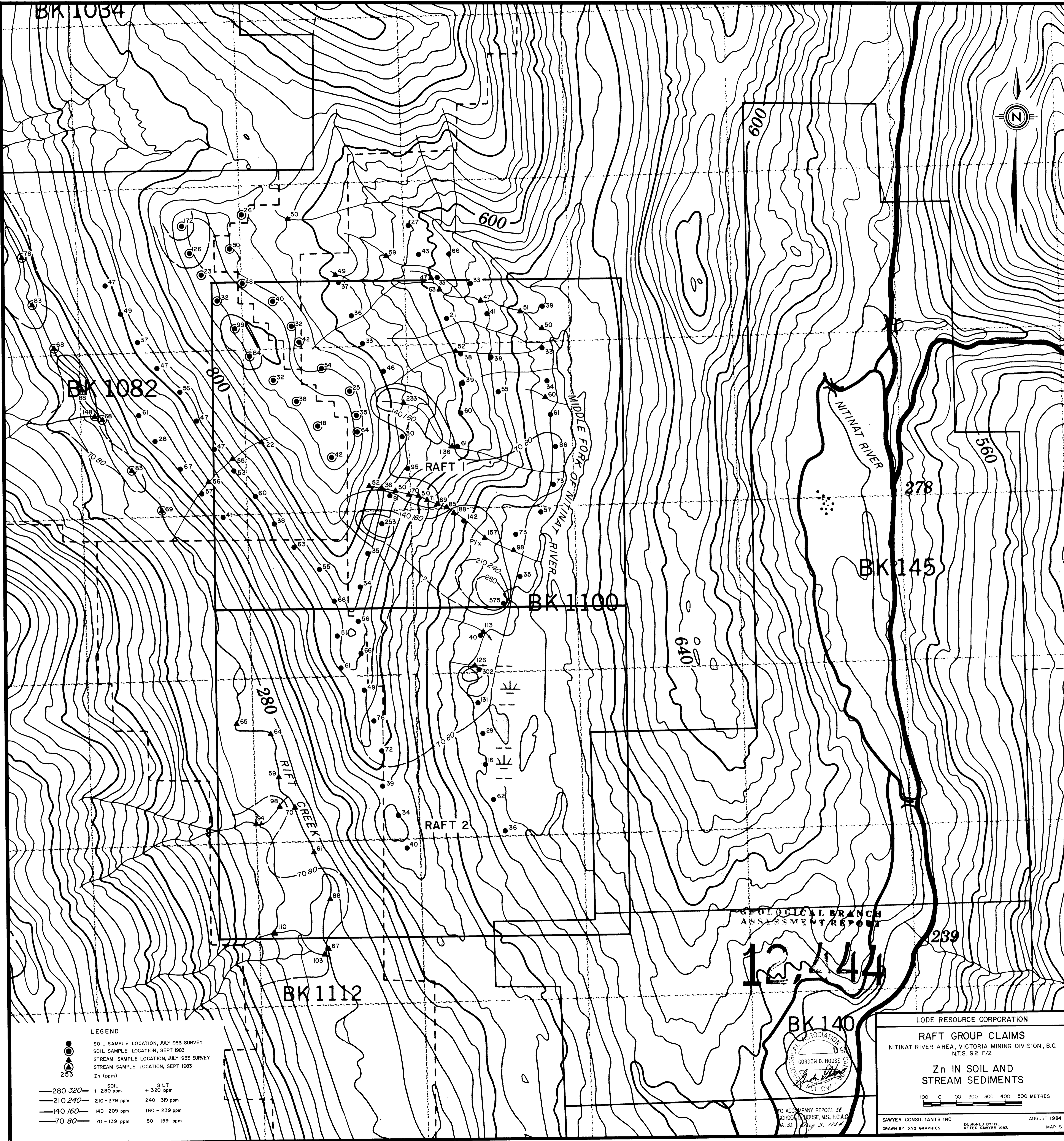
Zn IN SOIL AND
STREAM SEDIMENTS

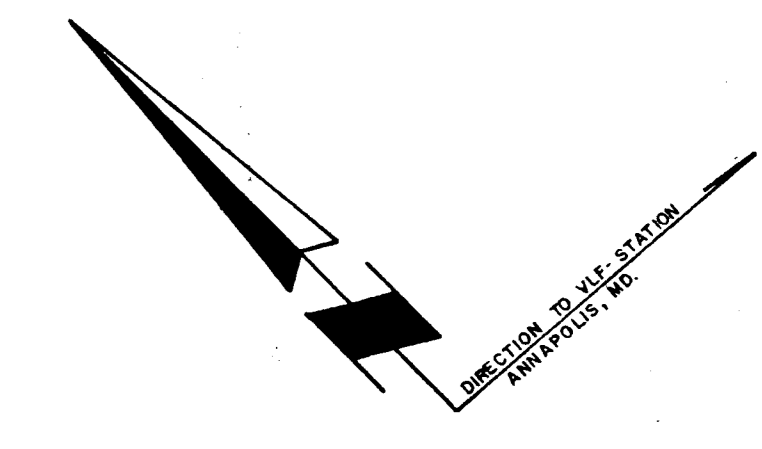
100 0 100 200 300 400 500 METRES

SAWYER CONSULTANTS INC. AUGUST 1984
DRAWN BY: XYS GRAPHICS DESIGNED BY: HL AFTER SAWYER 1983 MAP 5

LEGEND

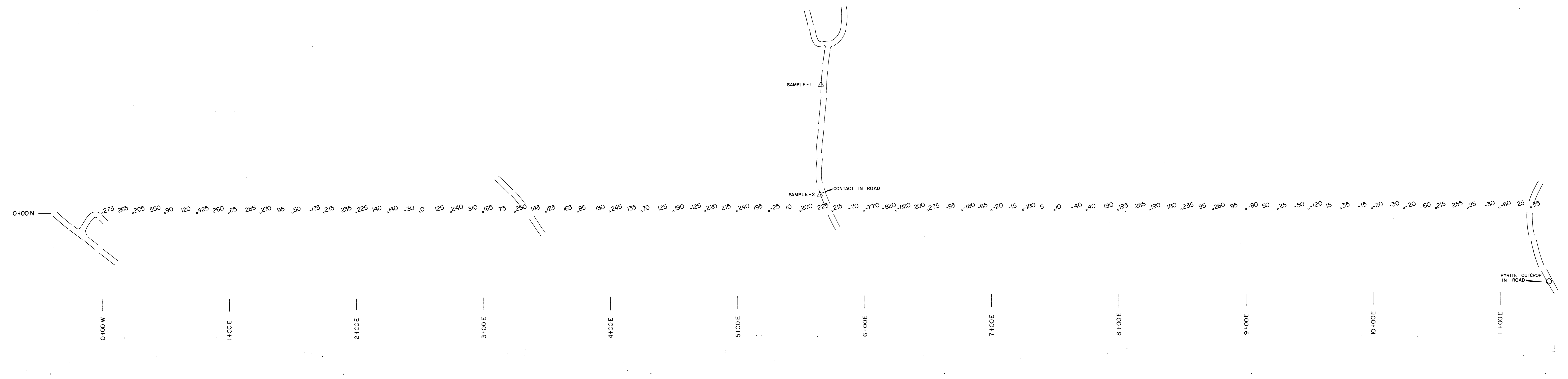
- SOIL SAMPLE LOCATION, JULY 1983 SURVEY
 - SOIL SAMPLE LOCATION, SEPT 1983
 - STREAM SAMPLE LOCATION, JULY 1983 SURVEY
 - STREAM SAMPLE LOCATION, SEPT 1983
- | | | | |
|-----------|----------------|---------------|------|
| 255 | Zn (ppm) | | |
| —280 320— | SOIL + 280 ppm | + 320 ppm | SILT |
| —210 240— | 210 - 279 ppm | 240 - 319 ppm | |
| —140 160— | 140 - 209 ppm | 160 - 239 ppm | |
| —70 80— | 70 - 139 ppm | 80 - 159 ppm | |





GEOLOGICAL BRANCH
ASSESSMENT REPORT

12,444



MAGNETOMETER DATA — VERTICAL MAGNETIC INTENSITY

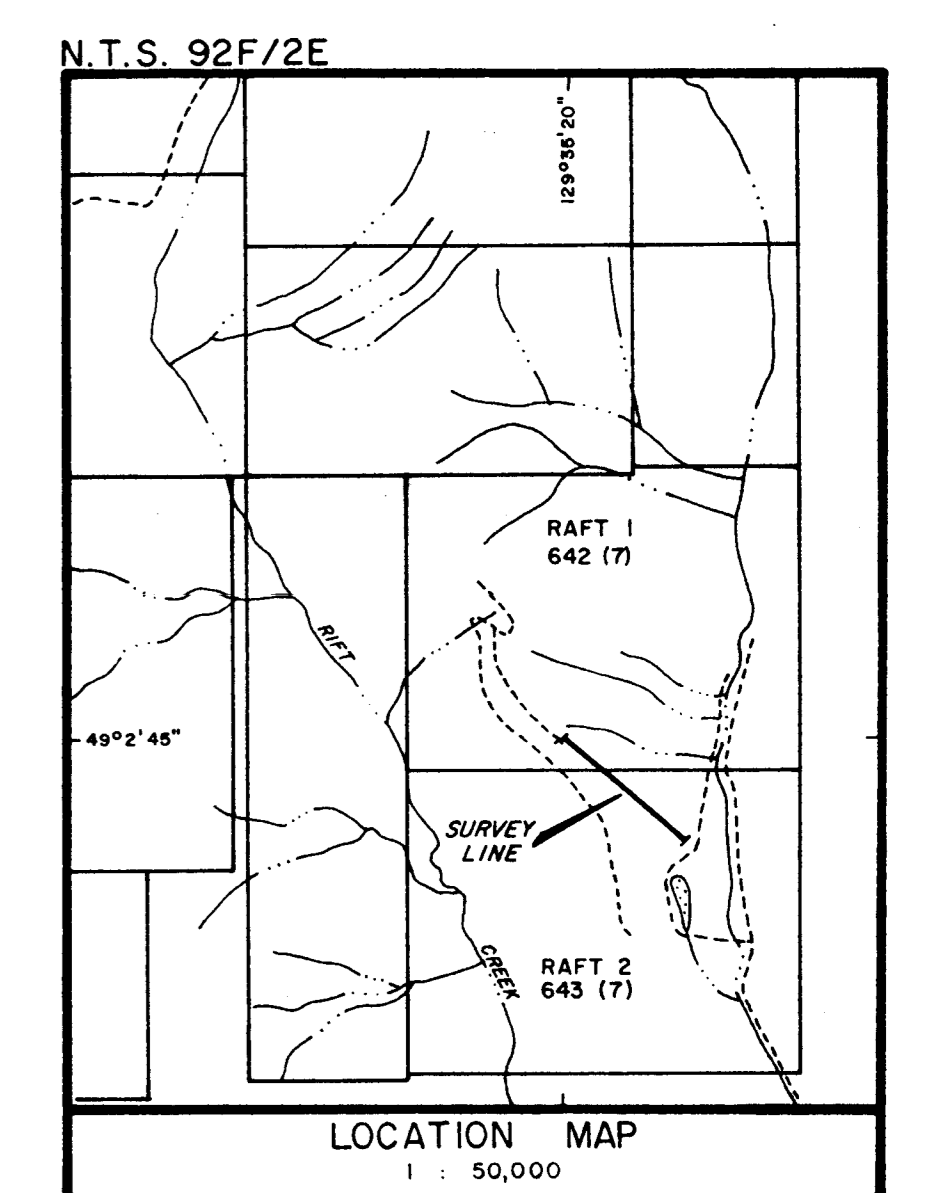
INSTRUMENT: SCINTREY MF-2 MAGNETOMETER



VLF - ELECTROMAGNETIC DATA

INSTRUMENT: GEONICS EM-16

To Accompany Geophysical Report
Map 6
Date: OCT. / 83
By GLEN E. WHITE - B.S.C. GEOPHYSICIST



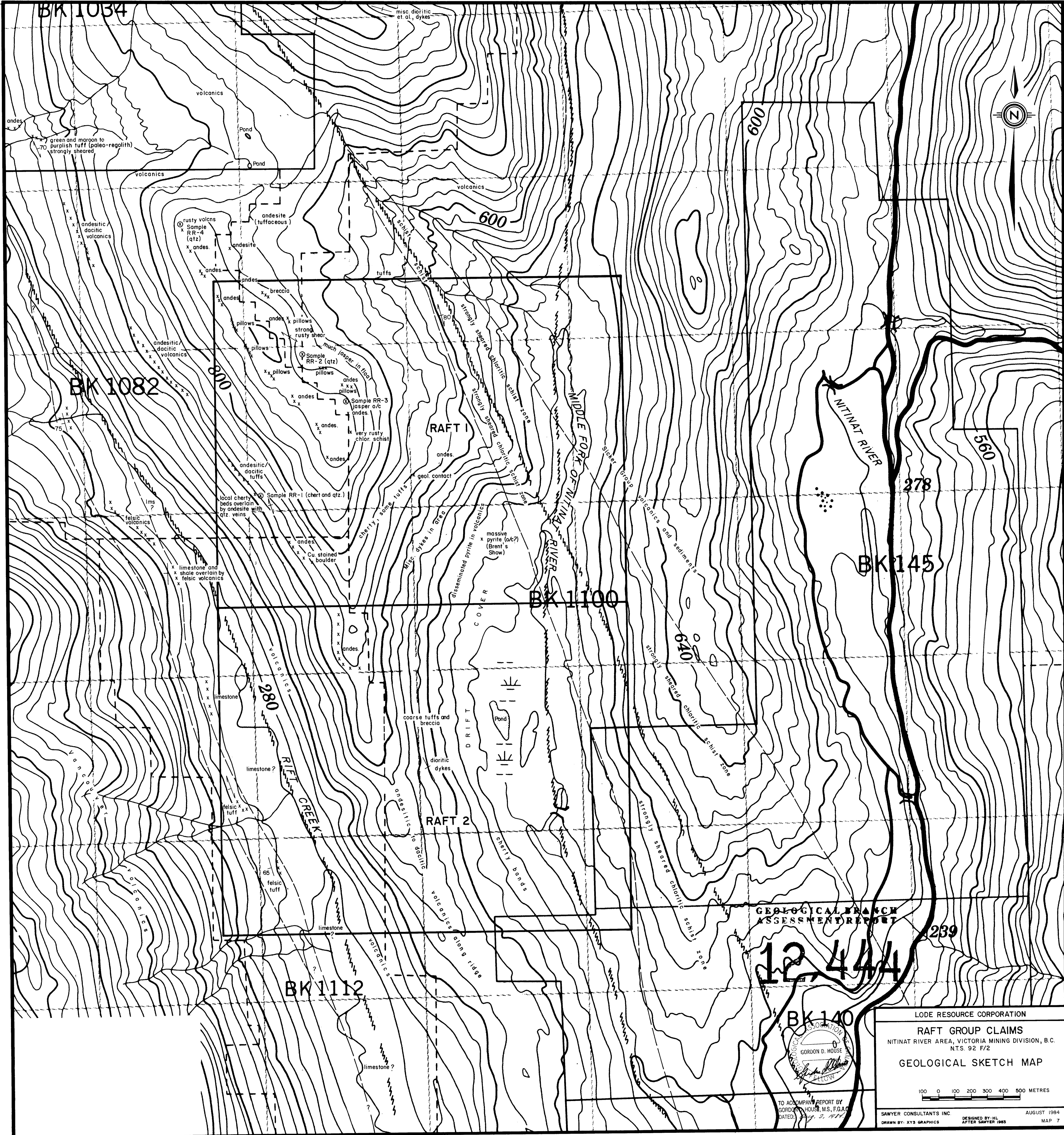
LODE RESOURCES LTD.
RAFT CLAIM
VICTORIA MINING DIVISION — BRITISH COLUMBIA

MAGNETOMETER SURVEY
8
VLF - ELECTROMAGNETOMETER SURVEY

Prepared By: G.E.W.
Drawn By: FINELINE DRAFTING
Checked By: G.E.W.
Date: OCT. / 83
Map 6

Glen E. White
geophysical consulting
&
services Ltd.

TO ACCOMPANY REPORT BY
GORDON D. HOWE, B.S., F.G.A.C.
DATED: 229. 3. 1984



GEOLOGICAL FRANCH ASSESSMENT REPORT

12,444

BK 140



TO ACCOMPANY REPORT BY GORDON D. HOUSE, M.S., F.G.A.C. DATED: 22. 5. 1984

LODE RESOURCE CORPORATION

RAFT GROUP CLAIMS
 NITINAT RIVER AREA, VICTORIA MINING DIVISION, B.C.
 N.T.S. 92 F/2

GEOLOGICAL SKETCH MAP

100 0 100 200 300 400 500 METRES

SAWYER CONSULTANTS INC. AUGUST 1984
 DESIGNED BY: H.L. AFTER SAWYER 1983 MAP 7

BK 1034

BK 1082

BK 1100

BK 1112

640

LEGEND

- SOIL SAMPLE LOCATION, JULY 1983 SURVEY
- SOIL SAMPLE LOCATION, SEPT 1983
- ▲ STREAM SAMPLE LOCATION, JULY 1983 SURVEY
- △ STREAM SAMPLE LOCATION, SEPT 1983
- 25 Au (ppb)

- 40 — + 40 ppb
- 30 — 30 - 39 ppb
- 20 — 20 - 29 ppb
- 10 — 10 - 19 ppb

