

84-#431A - 12451
03/85

GEOCHEMICAL SOIL SURVEY
ON THE
BACON CLAIM GROUP

LOWER JERVIS INLET AREA
VANCOUVER MINING DIVISION

N.T.S. 92F/16E, 92G/13W
LAT 49⁰ 45' LONG 123⁰ 59'

FOR
CHALICE MINING INC.
BY

CONSULTANTS:

EDWARD W. GROVE, Ph.D, P. Eng.

COMPILED BY:

STEVEN HODGSON
DIRECTOR/V.P., EXPLORATION

MARCH, 1984

GEOLOGICAL BRANCH
ASSESSMENT REPORT

12,451

TABLE OF CONTENTS

	PAGE
Introduction	
i location and access	1
ii history	1
iii property	2
iv summary of work performed	3
Property Location	
Figure 1: 1:125,000 topographical map	4
Figure 2: 1:50,000 claim map	5
Detailed Technical Data & Interpretation	6-7
Figure 3: work location map	8
Itemized Cost Statement	9
Author's Qualification	10-11
Survey Plan Maps & Results (in pocket) of Gold Soil Geochemistry Survey	
APPENDIX	
Assay results	
Rock sample description	

INTRODUCTION

LOCATION AND ACCESS

The Bacon Group of mineral claims are located some 50 air miles northwest of Vancouver on the Sechelt Peninsula near Earl's Cove, B.C. Coordinates are 49 deg. 45.5 min. North and 123 deg. 59 min. West. NTS grid is 92-H-13W.

Access is via vehicle and the Langdale ferry from Horseshoe Bay to Earl's Cove, then by foot over old, densely brushed logging roads.

Topography is typical of coastal mountain formation and rises from sea level to 4,000 feet across the breadth of the claim group.

HISTORY

Reconnaissance soil sampling grids were undertaken on the central and north-eastern sections of the Bacon I claim in 1972-1974 (A.R. 3757/5007). There is rumored to be an adit driven on massive chalcopryrite-sphalerite mineralization but Chalice exploration teams have, as yet, been unsuccessful in locating it.

Extensive exploration for gold and silver in high grade quartz-marcasite veins has been performed by Chalice Mining

on the Chalice claim group to the north, where drill targets have been delineated. Cu-Mo-Ag and Cu-Ag-Zn skarns are found 4-7 km. south of the Bacon Group (King Midas and Cambrian Chieftan, M.M.A.R. 1937/1950, B.C.D.M. Bull. 39).

PROPERTY

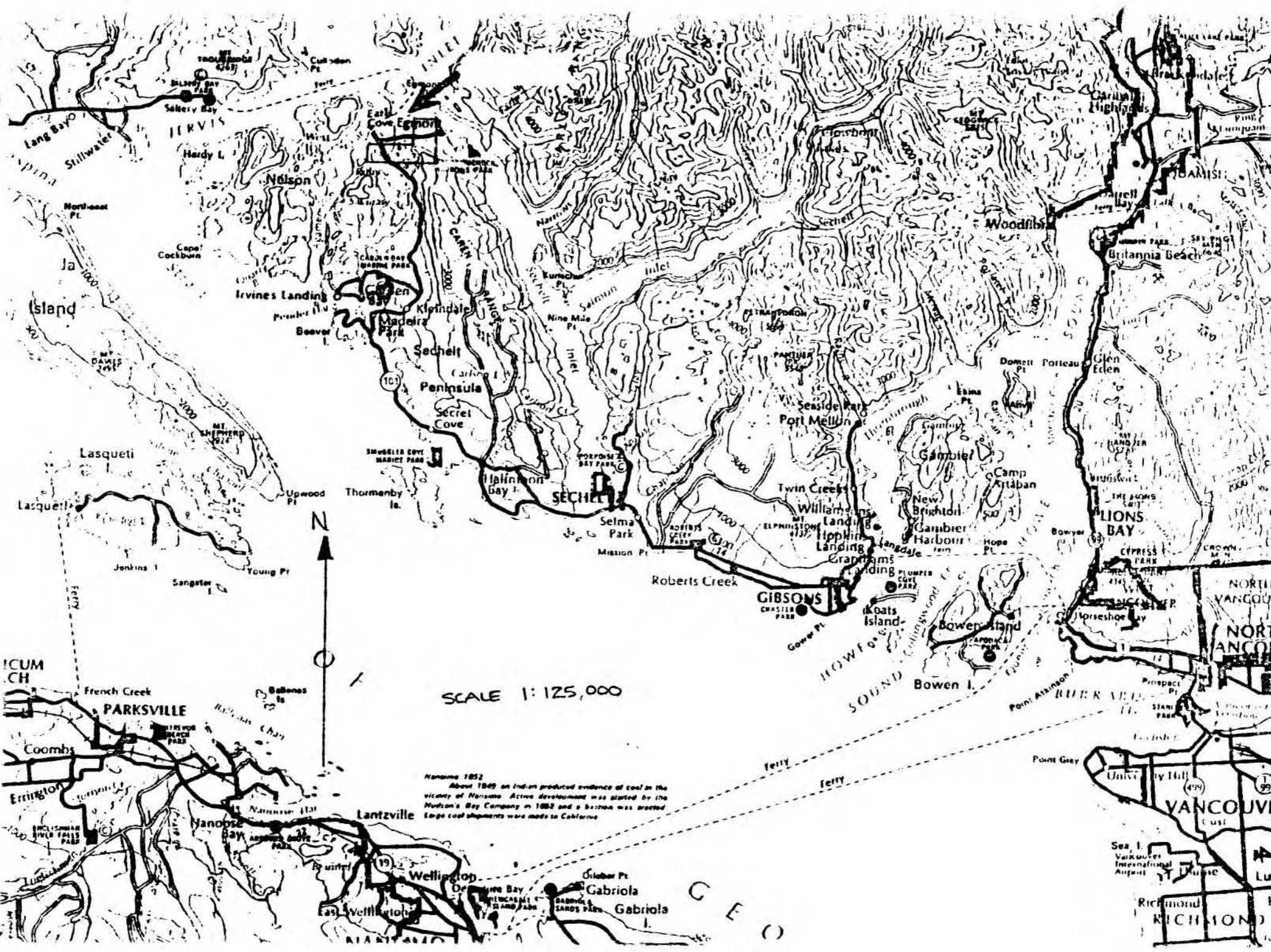
The claims comprising the Bacon Group are wholly owned by Chalice Mining Inc. Particulars are as follows:

<u>Claim Name</u>	<u>Units</u>	<u>Record#</u>	<u>Expiry Date</u>
Bacon I	20	1166	March 23, 1984
Bacon II	20	1167	March 23, 1984
Bacon III	20	1168	March 23, 1984
Wally III	18	1163	March 11, 1984

Following recommendations by David Fleming, B.Sc., and consulting geologist E.W. Grove, a program of geochemical soil sampling and selected rock geochem was carried out by Chalice personnel in January and February, 1984

SUMMARY OF WORK DONE

- A. **Geochemical Survey:** A total of 245 soil samples were collected between January 11 and February 23, 1984. The samples were air dried and taken to Chemex Labs in North Vancouver, B.C. for analysis of Ag and Au. The "B" horizon was sampled whenever possible. All work on the Bacon Group was confined to the Wally III claim. Six rock samples were submitted and analyzed for Cu, Pb, Zn, Ag, and Au.
- B. **Physical Work:** A total of 5.750 Km. of line was established on Baseline 1 and Baseline 2 using chain and compass and machette. All stations were marked with flagging and coordinate numbers.



SCALE 1:125,000

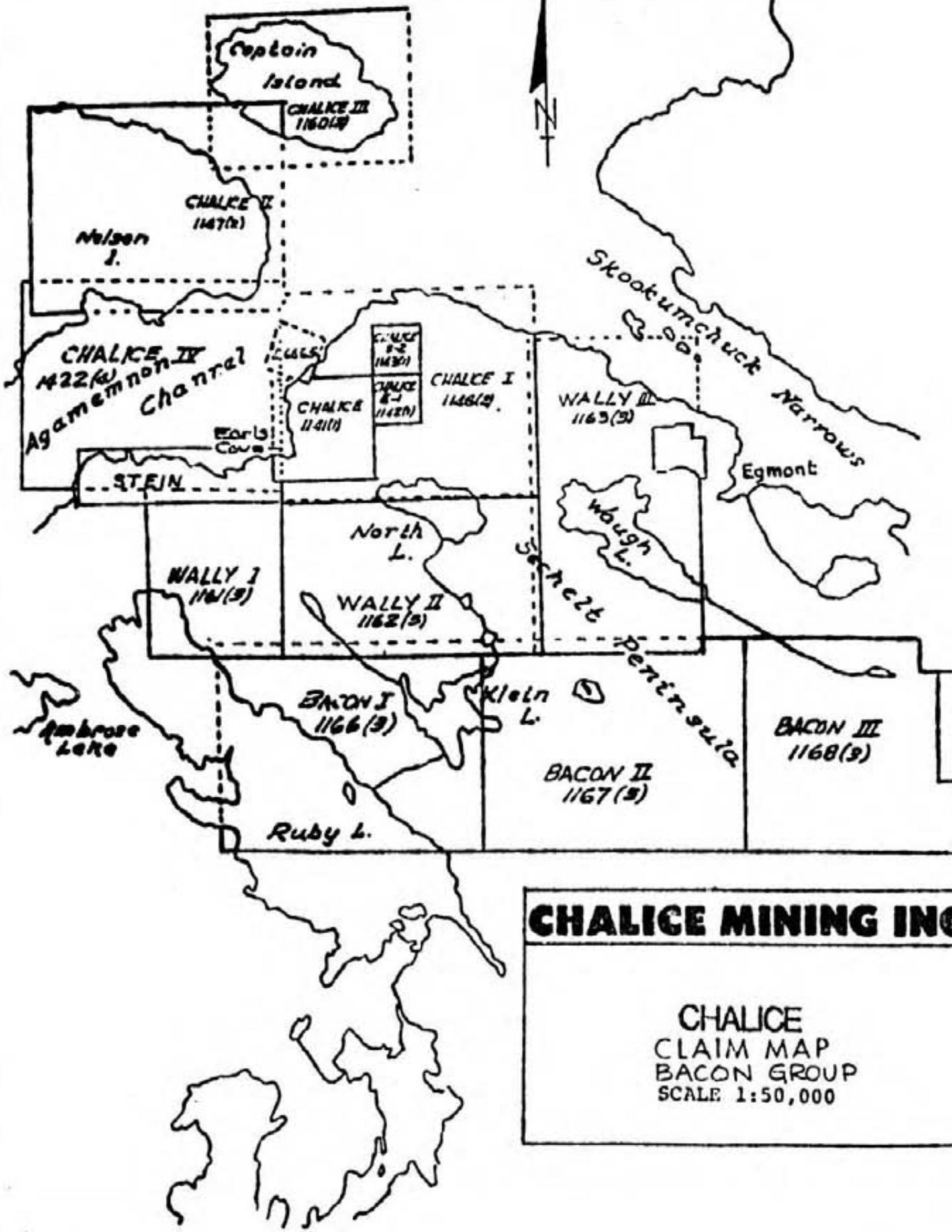
Nanaimo 1852
 About 1849 an Indian produced evidence of coal in the vicinity of Nanaimo. Active development was started by the Hudson's Bay Company in 1852 and a station was erected. Large coal shipments were made to California.

Sea Level
 Vancouver International Airport

RICHMOND

Servis

Inlet



CHALICE MINING INC

CHALICE
 CLAIM MAP
 BACON GROUP
 SCALE 1:50,000

DETAILED TECHNICAL DATA AND INTERPRETATION

Geochemical Survey: All samples were taken from the "BF" horizon whenever possible, at stations indicated on the geochemistry map. The samples were placed in Kraft soil sample bags, air dried, and taken to the Chemex Labs in North Vancouver, B. C., where they were analyzed for silver and gold. The silver was subjected to perchloric - nitric acid digestion and the gold was analyzed by atomic absorption. Six rock samples were analyzed for copper, lead, zinc, silver and gold.

The purpose of the survey was to examine the contact area between the volcanics which are a North-Westerly trending structure of lite green rhyolites and rhyo-dacites and a highly altered, (epidote, potassium feldspar, chlorite and pyrite) biotite, hornblende granodiorite. The exposure of rhyolites is approximately 20 meters wide on baseline No. 1 at 200N / 50W and is trending 310° / V.

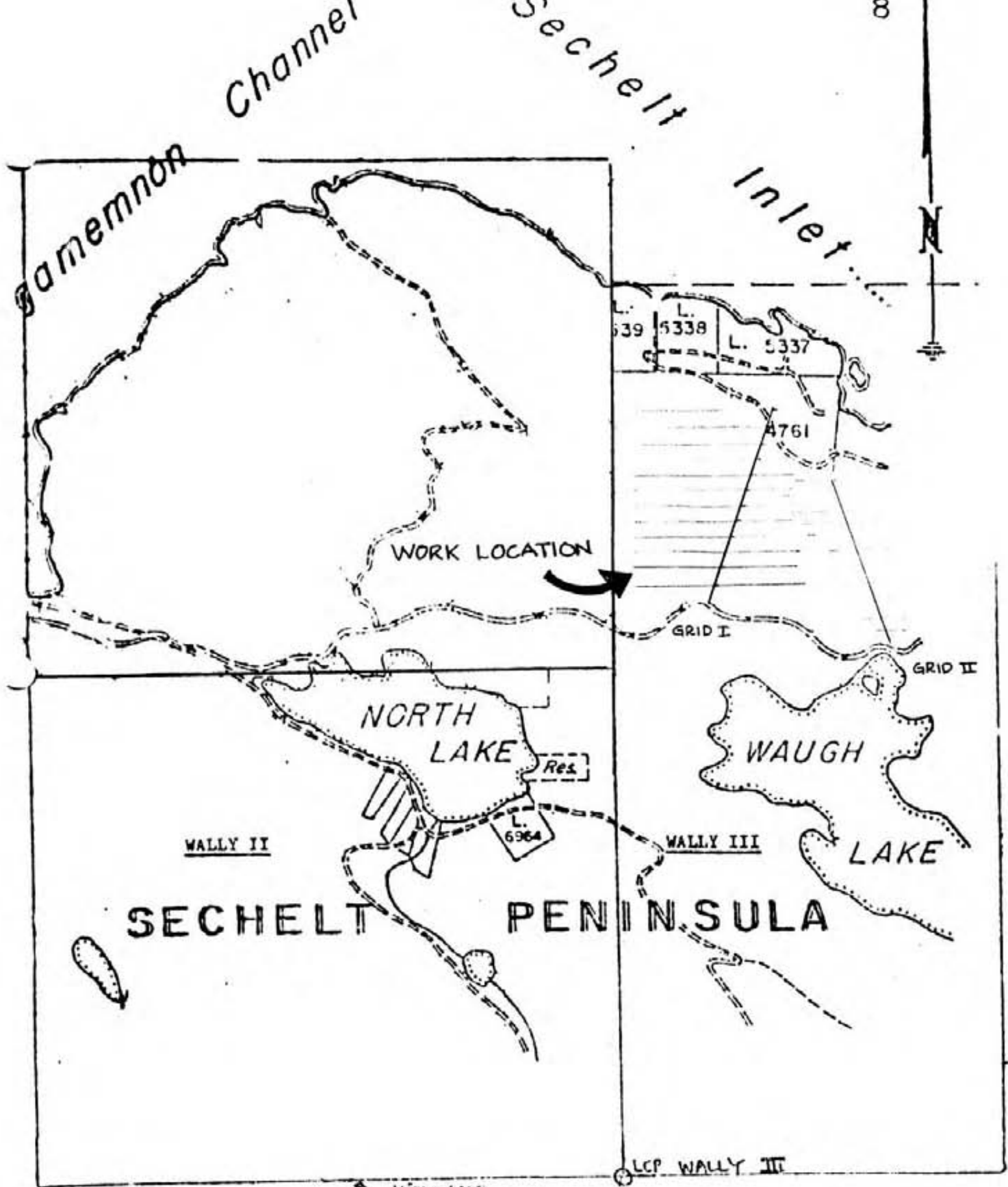
A reading of 3500 ppm gold was obtained from station 200N 100E and was immediately investigated to find a one meter quartz vein carrying marcasite, pyrite and galena. Several other anomalous soils are yet to be investigated. Further interpretation is beyond the scope of this report at this time.

LAB PREPARATION OF GEOLOGICAL, GEOCHEMICAL AND BIOLOGICAL MATERIALS

Sample handling and preparation procedures are as important as field sampling techniques. A poorly prepared sample is neither representative of the material obtained in the field nor can it be analysed with any degree of confidence. For this reason we spend considerable time studying handling and preparation procedures for each project.

Prep. Code*	Sample Type	Description Prep. Procedure	Price/Sample
GEOCHEM			
201	Soil or Sediment	Dry, sieve through – 80 mesh screen	\$ 0.60
202	Soil or Sediment	Dry, sieve through – 80 mesh screen save + 80 mesh fraction	1.00
203	Soil or Sediment	Dry, sieve through – 35 mesh screen then ring grind to approx. – 100 mesh	2.00
217	Soil or Sediment	Ring grind to approx. – 100 mesh	2.00
205	Rock or Core	Crush, subsample and ring grind to approx. – 100 mesh. Over 2 lbs. see code 251	2.50
235	Pan Concentrate	Ring Grind to approx. – 100 mesh	2.00
210	Vegetation	Milled to – 20 mesh	4.00
213	Stream Sediments Pan Concentrates	Separation of Heavy Minerals having a specific gravity greater than 2.96. Ring grind to – 100 mesh	14.00
214	Pulp	No sample preparation required	N/C
ASSAY			
207	Rock or Core (Precious metals)	Primary and secondary jaw crushing, tertiary cone crushing, rotary pulverize and screen to – 100 mesh. Screen is examined for 'metallics'	3.75
208	Rock or Core	Primary and secondary jaw crushing, tertiary cone crushing. Ring grind to approx. – 100 mesh	3.25
209	Concentrate	Ring grind and screen to – 100 mesh	3.75
225	Assay Material	No sample preparation required	N/C
MISCELLANEOUS			
221	Water	Water sample	N/C
227	Pulp	Rolling charge (Homogenizing pulp)	1.00
261	Pulp	Compositing charge (Combining pulps)	1.00 per included sample
231		1 - Assay ton fire assay – surcharge	1.00
216		Screen to – 140 mesh – surcharge	1.00
230		Screen to – 200 mesh – surcharge	2.00
219		Samples requiring additional drying	2.00
251		Overweight charge on assay samples > 15 lbs. and geochem samples > 2 lbs.	0.25/lb.

*Occurs in the first column of each certificate.
Prices in Canadian dollars or U.S. equivalent.



0 200 400 600 800 1000 1200 1400 1600 1800 2000

SCALE 1:20,000 1 CM = 200 METERS

LCP, CLAIM BOUNDARIES & GRID ESTABLISHED BY CHAIN & COMPASS

ITEMIZED COST STATEMENT

<u>Date</u>	<u>Job Performed</u>
January 11-12, '84	Establish baseline
February 15-17, '84	Geochemical survey
February 20-23, '84	Geochemical survey

WAGES

T. Hume	3 da. @ \$100 da.	\$300.00
S. Hodgson	6½ da. @ \$125 da.	\$812.50
D. Schindelbauer	4 da. @ \$125 da.	\$500.00

<u>TOTAL</u>	<u>\$1,612.50</u>
--------------	-------------------

Total wages	\$1,612.50
Cost of Assessment Report	200.00
Mobilization	272.00
Camp Cost	270.00
Field supplies	104.00
Soil assay - 260 samples @ \$10.20/sample	2,652.00
Rock assay - 13 samples @ \$14.24/sample	185.25
Sample preparation	92.00
Geological consultant	475.45

<u>TOTAL</u>	<u>\$5,863.20</u>
--------------	-------------------

AUTHOR'S
QUALIFICATIONS

I certify that:

1. I am a graduate of the Mineral Exploration for Prospectors Course (1979) Selkirk College, Castlegar, B.C.
2. I have been a prospector in British Columbia for 7 years.
3. The information for the accompanying report was based on work done personally and from Mineral Inventory Assessment Report and Government Publications
4. I am a Director of Chalice Mining Inc. -

Steven Hodgson
Steven Hodgson

SELKIRK



COLLEGE

CASTLEGAR, B. C., CANADA

COMMUNITY EDUCATION SERVICES

THIS IS TO CERTIFY THAT

STEVEN HODGSON

HAS PARTICIPATED IN

"MINERAL EXPLORATION FOR PROSPECTORS"

144 HOUR COURSE

Co-sponsored by the Ministry of Energy, Mines and Petroleum Resources,
the Ministry of Education,
and Continuing Education, Selkirk College



C. J. A.
LIST

W. S. Shepherd
PROGRAM COORDINATOR

C. P. Adams
COMMUNITY EDUCATION



CHEMEX LABS LTD.

212 BROOKSBANK AVE.
NORTH VANCOUVER, B.C.
CANADA V7J 2C1

TELEPHONE: (604) 984-0221
TELEX: 043-52597

• ANALYTICAL CHEMISTS

• GEOCHEMISTS

• REGISTERED ASSAYERS

CERTIFICATE OF ANALYSIS

TO : CHALICE MINING INC.

P.O. BOX 2376
SECHLT, B.C.
V0N 3A0

CERT. # : A8411106-001-A
INVOICE # : 19411106
DATE : 4-APR-84
P.O. # : NONE

ATTN: STEVE HODGES

Sample description	Prep code	Ag ppm	AU-44 ppm				
BL 00	201	0.1	<10	--	--	--	--
BL +25N	201	0.1	<10	--	--	--	--
BL 0+50N	201	0.1	<10	--	--	--	--
BL +50N	201	0.1	<10	--	--	--	--
BL +75N	201	0.1	20	--	--	--	--
BL 0+85N	201	0.1	<10	--	--	--	--
BL +100N	201	0.1	<10	--	--	--	--
BL +125N	201	0.1	<10	--	--	--	--
BL +150N	201	0.1	<10	--	--	--	--
BL +175N	201	0.2	<10	--	--	--	--
BL +200N	201	0.2	10	--	--	--	--
BL +225N	201	0.1	<10	--	--	--	--
BL +250N	201	0.1	10	--	--	--	--
BL +275N	201	0.1	20	--	--	--	--
BL +300N	201	0.3	<10	--	--	--	--
BL +325N	201	0.1	<10	--	--	--	--
BL +350N	201	0.2	<10	--	--	--	--
BL +375N	201	0.1	340	--	--	--	--
BL +400N	201	0.2	<10	--	--	--	--
BL +425N	201	0.1	<10	--	--	--	--
BL +450N	201	0.1	<10	--	--	--	--
BL +475N	201	0.2	<10	--	--	--	--
BL +500N	201	0.4	120	--	--	--	--
BL +525N	201	0.2	<10	--	--	--	--
BL +550N	201	0.3	100	--	--	--	--
BL +575N	201	0.2	<10	--	--	--	--
BL +600N	201	0.2	30	--	--	--	--
BL +625N	201	0.7	<10	--	--	--	--
BL +650N	201	0.1	<10	--	--	--	--
BL +675N	201	0.2	<10	--	--	--	--
BL +700N	201	0.3	10	--	--	--	--
BL 100N 25E	201	0.1	<10	--	--	--	--
BL 100N 50E	201	0.1	<10	--	--	--	--
BL 100N 75E	201	0.1	<10	--	--	--	--
BL 100N 100E	201	0.1	<10	--	--	--	--
BL 100N 125E	201	0.4	<10	--	--	--	--
BL 100N 150E	201	0.1	<10	--	--	--	--
BL 100N 175E	201	0.2	<10	--	--	--	--
BL 100N 200E	201	0.2	<10	--	--	--	--
BL 100N 225E	201	0.2	<10	--	--	--	--

Certified by *Hart Bickler*





CHEMEX LABS LTD.

212 BROOKSBANK AVE.
NORTH VANCOUVER, B.C.
CANADA V7J 2C1

TELEPHONE: (604) 984-0221
TELEX: 043-52597

• ANALYTICAL CHEMISTS

• GEOCHEMISTS

• REGISTERED ASSAYERS

CERTIFICATE OF ANALYSIS

TO : CHALICE MINING INC.

P.O. BOX 2376
SECHLT, B.C.
VGN 3A0

CERT. # : A8411106-002-A
INVOICE # : 18411106
DATE : 4-APR-84
P.O. # : NONE

ATTN: STEVE HODGES

Sample description	Prep code	Ag ppm	AU-AA ppb						
3L 100N 250E	201	0.1	<10	--	--	--	--	--	--
3L 100N 275E	201	0.1	<10	--	--	--	--	--	--
3L 100N 300E	201	0.1	100	--	--	--	--	--	--
3L 100N 325E	201	0.1	<10	--	--	--	--	--	--
3L 100N 350E	201	0.1	<10	--	--	--	--	--	--
3L 100N 375E	201	0.1	40	--	--	--	--	--	--
3L 100N 0+75E	201	0.1	<10	--	--	--	--	--	--
3L 100N 0+75E CK	201	0.2	<10	--	--	--	--	--	--
3L 100N 0+100E	201	0.1	<10	--	--	--	--	--	--
3L 100N 0+200E	201	0.1	10	--	--	--	--	--	--
3L 100N 25W	201	0.1	40	--	--	--	--	--	--
3L 100N 50W	201	0.1	10	--	--	--	--	--	--
3L 100N 75W	201	0.1	60	--	--	--	--	--	--
3L 100N 100W	201	0.1	<10	--	--	--	--	--	--
3L 100N 125W	201	0.1	<10	--	--	--	--	--	--
3L 100N 150W	201	0.1	<10	--	--	--	--	--	--
3L 100N 175W	201	0.1	<10	--	--	--	--	--	--
3L 200N 25E	201	0.1	10	--	--	--	--	--	--
3L 200N 50E	201	0.1	30	--	--	--	--	--	--
3L 200N 75E	201	0.1	<10	--	--	--	--	--	--
3L 200N 100E	201	0.1	3500	--	--	--	--	--	--
3L 200N 125E	201	0.1	<10	--	--	--	--	--	--
3L 200N 150E	201	0.1	<10	--	--	--	--	--	--
3L 200N 175E	201	0.1	<10	--	--	--	--	--	--
3L 200N 200E	201	0.1	<10	--	--	--	--	--	--
3L 200N 225E	201	0.1	40	--	--	--	--	--	--
3L 200N 250E	201	0.1	<10	--	--	--	--	--	--
3L 200N 275E	201	0.1	70	--	--	--	--	--	--
3L 200N 300E	201	0.1	<10	--	--	--	--	--	--
3L 200N 325E	201	0.1	<10	--	--	--	--	--	--
3L 200N 350E	201	0.1	<10	--	--	--	--	--	--
3L 200N 25W	201	0.1	<10	--	--	--	--	--	--
3L 200N 50W	201	0.1	20	--	--	--	--	--	--
3L 200N 75W	201	0.1	<10	--	--	--	--	--	--
3L 200N 125W	201	0.1	<10	--	--	--	--	--	--
3L 200N 150W	201	0.1	<10	--	--	--	--	--	--
3L 200N 175W	201	0.1	<10	--	--	--	--	--	--
3L 200N 200W	201	0.1	<10	--	--	--	--	--	--
3L 300N 25E	201	0.1	<10	--	--	--	--	--	--
3L 300N 50E	201	0.1	<10	--	--	--	--	--	--

Certified by *Hart Bichler*





CHEMEX LABS LTD.

212 BROOKSBANK AVE.
NORTH VANCOUVER, B.C.
CANADA V7J 2C1

TELEPHONE: (604) 984-0221
TELEX: 043-52597

• ANALYTICAL CHEMISTS

• GEOCHEMISTS

• REGISTERED ASSAYERS

CERTIFICATE OF ANALYSIS

TO : CHALICE MINING INC.

P.O. BOX 2376
SECHelt, B.C.
V0N 3A0

CERT. # : A8411106-003-A
INVOICE # : I8411106
DATE : 4-APR-84
P.O. # : NONE

ATTN: STEVE HODGES

Sample description	Prep code	Ag ppm	AU-AA ppb				
3L 300N 75E	201	0.1	<10	--	--	--	--
3L 300N 100E	201	0.1	<10	--	--	--	--
3L 300N 125E	201	0.1	<10	--	--	--	--
3L 300N 150E	201	0.1	<10	--	--	--	--
3L 300N 175E	201	0.1	<10	--	--	--	--
3L 300N 200E	201	0.1	<10	--	--	--	--
3L 300N 225E	201	0.1	<10	--	--	--	--
3L 300N 250E	201	0.1	<10	--	--	--	--
3L 300N 275E	201	0.1	<10	--	--	--	--
3L 300N 300E	201	0.1	<10	--	--	--	--
3L 300N 325E	201	0.1	<10	--	--	--	--
3L 300N 350E	201	0.1	<10	--	--	--	--
3L 300N 25W	201	0.1	<10	--	--	--	--
3L 300N 50W	201	0.1	<10	--	--	--	--
3L 300N 75W	201	0.1	<10	--	--	--	--
3L 300N 100W	201	0.1	<10	--	--	--	--
3L 300N 125W	201	0.1	<10	--	--	--	--
3L 300N 150W	201	0.1	<10	--	--	--	--
3L 300N 175W	201	0.1	<10	--	--	--	--
3L 300N 200W	201	0.1	<10	--	--	--	--
3L 300N 225W	201	0.1	<10	--	--	--	--
3L 400N 25E	201	0.1	<10	--	--	--	--
3L 400N 50E	201	0.1	<10	--	--	--	--
3L 400N 75E	201	0.1	<10	--	--	--	--
3L 400N 100E	201	0.1	<10	--	--	--	--
3L 400N 125E	201	0.1	<10	--	--	--	--
3L 400N 150E	201	0.1	<10	--	--	--	--
3L 400N 175E	201	0.1	<10	--	--	--	--
3L 400N 200E	201	0.1	<10	--	--	--	--
3L 400N 225E	201	0.1	<10	--	--	--	--
3L 400N 250E	201	0.1	<10	--	--	--	--
3L 400N 275E	201	0.1	<10	--	--	--	--
3L 400N 300E	201	0.1	<10	--	--	--	--
3L 400N 25W	201	0.2	<10	--	--	--	--
3L 400N 50W	201	0.1	<10	--	--	--	--
3L 400N 75W	201	0.1	<10	--	--	--	--
3L 400N 100W	201	0.1	<10	--	--	--	--
3L 400N 125W	201	0.1	<10	--	--	--	--
3L 400N 150W	201	0.1	<10	--	--	--	--
3L 400N 175W	201	0.2	<10	--	--	--	--



Certified by *Hart Bichler*



CHEMEX LABS LTD.

212 BROOKSBANK AVE.
NORTH VANCOUVER, B.C.
CANADA V7J 2C1

• ANALYTICAL CHEMISTS

• GEOCHEMISTS

• REGISTERED ASSAYERS

TELEPHONE: (604) 984-0221

TELEX: 043-52597

CERTIFICATE OF ANALYSIS

TO : CHALICE MINING INC.

P.O. BOX 2376
SECHLT, B.C.
V0N 3A0

CERT. # : A8411106-004-A

INVOICE # : 18411106

DATE : 4-APR-84

P.O. # : NONE

ATTN: STEVE HODGES

Sample description	Prep code	Ag ppm	AU-AA ppb				
3L 400N 200W	201	0.1	<10	--	--	--	--
BL 400N 225W	201	0.1	<10	--	--	--	--
BL 400N 250W	201	0.2	<10	--	--	--	--
3L 500N 25E	201	0.1	<10	--	--	--	--
3L 500N 50E	201	0.1	120	--	--	--	--
3L 500N 75E	201	0.1	<10	--	--	--	--
BL 500N 100E	201	0.3	<10	--	--	--	--
BL 500N 125E	201	0.2	<10	--	--	--	--
BL 500N 150E	201	1.3	<10	--	--	--	--
BL 500N 175E	201	0.1	20	--	--	--	--
BL 500N 200E	201	0.1	<10	--	--	--	--
3L 500N 225E	201	0.1	<10	--	--	--	--
BL 500N 250E	201	0.1	<10	--	--	--	--
BL 500N 75W	201	0.1	<10	--	--	--	--
3L 500N 100W	201	0.1	<10	--	--	--	--
BL 500N 125W	201	0.1	<10	--	--	--	--
3L 500N 150W	201	0.1	<10	--	--	--	--
BL 500N 175W	201	0.1	<10	--	--	--	--
BL 500N 200W	201	0.1	<10	--	--	--	--
BL 500N 225W	201	0.1	<10	--	--	--	--
BL 500N 250W	201	0.1	<10	--	--	--	--
BL 500N 275W	201	0.1	<10	--	--	--	--
3L 500N 300W	201	0.1	<10	--	--	--	--
3L 600N 25E	201	0.3	<10	--	--	--	--
BL 600N 50E	201	0.1	<10	--	--	--	--
BL 600N 75E	201	0.1	<10	--	--	--	--
BL 600N 100E	201	0.1	<10	--	--	--	--
BL 600N 115E	201	0.1	<10	--	--	--	--
3L 600N 25W	201	0.1	<10	--	--	--	--
3L 600N 50W	201	0.2	<10	--	--	--	--
BL 600N 75W	201	0.1	<10	--	--	--	--
3L 600N 100W	201	0.1	<10	--	--	--	--
BL 600N 125W	201	0.1	<10	--	--	--	--
3L 600N 150W	201	0.1	<10	--	--	--	--
3L 600N 175W	201	0.1	<10	--	--	--	--
BL 600N 200W	201	0.1	<10	--	--	--	--
BL 600N 225W	201	0.1	<10	--	--	--	--
3L 600N 250W	201	0.1	<10	--	--	--	--
3L 600N 275W	201	0.1	<10	--	--	--	--
5L 600N 300W	201	0.1	<10	--	--	--	--

Certified by *Hart Bickler*





CHEMEX LABS LTD.

212 BROOKSBANK AVE.
NORTH VANCOUVER, B.C.
CANADA V7J 2C1

TELEPHONE: (604) 984-0221
TELEX: 043-52597

• ANALYTICAL CHEMISTS

• GEOCHEMISTS

• REGISTERED ASSAYERS

CERTIFICATE OF ANALYSIS

TO : CHALICE MINING INC.

P.O. BOX 2376
SECHLT, B.C.
V0N 3A0

CERT. # : A8411106-005-A
INVOICE # : I8411106
DATE : 4-APR-84
P.O. # : NONE

ATTN: STEVE HODGES

Sample description	Prep code	Ag ppm	AU-AA ppb				
9L 600N 325W	201	0.3	<10	--	--	--	--
8L 600N 350W	201	0.1	<10	--	--	--	--
8L 700N 25W	201	0.1	<10	--	--	--	--
8L 700N 50W	201	0.1	<10	--	--	--	--
8L 700N 75W	201	0.1	<10	--	--	--	--
8L 700N 100W	201	0.8	<10	--	--	--	--
8L 700N 125W	201	0.1	<10	--	--	--	--
8L 700N 150W	201	0.1	20	--	--	--	--
8L 700N 175W	201	0.1	<10	--	--	--	--
8L 700N 200W	201	0.1	<10	--	--	--	--
9L 700N 225W	201	0.1	<10	--	--	--	--
8L 700N 250W	201	0.1	<10	--	--	--	--
8L 700N 275W	201	0.3	<10	--	--	--	--
8L 700N 300W	201	0.1	<10	--	--	--	--
8L 700N 315W	201	0.1	30	--	--	--	--
8L 100 200E 20N	201	0.1	<10	--	--	--	--
8L 100 200E 20N	201	0.1	<10	--	--	--	--
NBLN 0+200	201	0.1	<10	--	--	--	--
N 00 BLS 300W	201	0.1	10	--	--	--	--
N 00 BLS 0+350W	201	0.1	10	--	--	--	--
NBL 520S 0+410W	201	0.1	<10	--	--	--	--
N 00 3L 0+450W	201	0.1	<10	--	--	--	--
NBL 200N 150E	201	0.1	<10	--	--	--	--
NBL 200N 0+300W	201	0.2	<10	--	--	--	--
NBL 500S 0+482W	201	0.1	<10	--	--	--	--
8L 100N 0+25E	201	0.1	<10	--	--	--	--
8L 2 100N 0+50E	201	0.1	<10	--	--	--	--
8L 2 100N 0+75E	201	0.2	30	--	--	--	--
8L 2 L100 25W	201	0.1	<10	--	--	--	--
8L 2 L100 50W	201	0.1	<10	--	--	--	--
8L 2 L100 75W	201	0.1	<10	--	--	--	--
8L 2 L125 25W	201	0.1	<10	--	--	--	--
8L 2 L125 50W	201	0.2	<10	--	--	--	--
8L 2 200N 0+25E	201	0.3	<10	--	--	--	--
8L 2 200N 0+50E	201	0.2	<10	--	--	--	--
8L 2 200N 0+75E	201	0.1	<10	--	--	--	--
8L 2 200N 0+100E	201	0.1	<10	--	--	--	--
8L 2 200N 0+125E	201	0.1	<10	--	--	--	--
8L 2 200N 0+150E	201	0.1	<10	--	--	--	--
8L 2 L200 25W	201	0.1	<10	--	--	--	--

Certified by *Hart Buchler*





CHEMEX LABS LTD.

212 BROOKSBANK AVE.
NORTH VANCOUVER, B.C.
CANADA V7J 2C1

TELEPHONE: (604) 984-0221
TELEX: 043-52597

• ANALYTICAL CHEMISTS

• GEOCHEMISTS

• REGISTERED ASSAYERS

CERTIFICATE OF ANALYSIS

TO : CHALICE MINING INC.

P.O. BOX 2376
SECHLT, B.C.
V0N 3A0

CERT. # : A8411105-006-A
INVOICE # : 18411106
DATE : 4-APR-84
P.O. # : NONE

ATTN: STEVE HODGES

Sample description	Prep code	Ag ppm	AU-AA ppb				
3L 2 L250 25W	201	0.2	<10	--	--	--	--
3L 2 300N 0+25E	201	0.1	<10	--	--	--	--
3L 2 300N 0+50E	201	0.1	<10	--	--	--	--
3L 2 300N 0+75E	201	0.1	<10	--	--	--	--
3L 2 300N 25W	201	0.1	<10	--	--	--	--
3L 2 300N 50W	201	0.1	<10	--	--	--	--
3L 2 300N 75W	201	0.1	20	--	--	--	--
3L 2 400N 0+25E	201	0.1	<10	--	--	--	--
3L 400N 0+50E	201	0.1	<10	--	--	--	--
3L 400N 0+75E	201	0.1	<10	--	--	--	--
3L 2 400N 0+100E	201	0.1	<10	--	--	--	--
3L 2 L400 25W	201	0.2	<10	--	--	--	--
3L 2 L400 50W	201	0.2	<10	--	--	--	--
3L 2 500N 0+25E	201	0.1	<10	--	--	--	--
3L 2 500N 0+50E	201	0.2	<10	--	--	--	--
3L 2 500N 0+75E	201	0.4	<10	--	--	--	--
3L 2 0+00	201	0.2	<10	--	--	--	--
3L 2 0+25	201	0.3	<10	--	--	--	--
3L 2 0+50	201	0.2	<10	--	--	--	--
3L 2 0+75	201	0.3	<10	--	--	--	--
3L 2 100	201	0.2	<10	--	--	--	--
3L 2 125	201	0.2	<10	--	--	--	--
3L 2 150	201	0.1	<10	--	--	--	--
3L 2 175	201	0.1	<10	--	--	--	--
3L 2 200	201	0.2	<10	--	--	--	--
3L 2 225	201	0.1	<10	--	--	--	--
3L 2 250	201	0.3	<10	--	--	--	--
3L 2 275	201	0.1	<10	--	--	--	--
3L 2 300	201	0.1	<10	--	--	--	--
3L 2 325	201	0.1	<10	--	--	--	--
3L 2 350	201	0.2	<10	--	--	--	--
3L 2 375	201	0.2	<10	--	--	--	--
3L 2 400	201	0.1	<10	--	--	--	--
3L 2 425	201	0.1	<10	--	--	--	--
3L 2 450	201	0.1	<10	--	--	--	--
3L 2 475	201	0.1	<10	--	--	--	--
3L 2 500	201	0.1	<10	--	--	--	--
3L 2 525	201	0.1	<10	--	--	--	--
3L 2 550	201	0.1	240	--	--	--	--
3L 2 575	201	0.1	<10	--	--	--	--

Certified by *Hart Bichler*



MEMBER
CANADIAN TESTING
ASSOCIATION



CHEMEX LABS LTD.

212 BROOKSBANK AVE.
NORTH VANCOUVER, B.C.
CANADA V7J 2C1

TELEPHONE: (604) 984-0221
TELEX: 043-52597

• ANALYTICAL CHEMISTS

• GEOCHEMISTS

• REGISTERED ASSAYERS

CERTIFICATE OF ANALYSIS

TO : CHALICE MINING INC.

P.O. BOX 2376
SECHelt, B.C.
V2N 3A0

CERT. # : A8411106-007-A
INVOICE # : 18411106
DATE : 4-APR-84
P.O. # : NONE

ATTN: STEVE HODGES

Sample Description	Prep code	Ag ppm	AU-AA ppb				
3L 2 600	201	0.1	<10	--	--	--	--
3L 2 625	201	0.1	<10	--	--	--	--
3L 2 650	201	0.1	<10	--	--	--	--
3L 2 675	201	0.1	<10	--	--	--	--
3L 2 700	201	0.1	<10	--	--	--	--



MEMBER
CANADIAN TESTING
ASSOCIATION

Certified by *Hart Bickler*



CHEMEX LABS LTD.

212 BROOKSBANK AVE.
NORTH VANCOUVER, B.C.
CANADA V7J 2C1

TELEPHONE: (604) 984-0221
TELEX 043-52597

• ANALYTICAL CHEMISTS

• GEOCHEMISTS

• REGISTERED ASSAYERS

CERTIFICATE OF ANALYSIS

TO : CHALICE MINING INC.

P.O. BOX 2376
SECHELT, B.C.
V6N 3A0

CERT. # : A8411107-001-A
INVOICE # : 18411107
DATE : 3-APR-84
P.O. # : NONE

ATTN: STEVE HODGES

Sample description	Prep code	Cu ppm	Pb ppm	Zn ppm	Ag ppm	AJ-AA ppb	
3L 0+85N 5MW	205	13	1	37	0.1	<10	--
N3L 200N 220E	205	32	11	15	0.1	<10	--
N3L 220N 0+200E	205	42	2	60	0.1	<10	--
3L 2 L500 25W	205	1000	3	39	4.2	300	--
WL	205	300	20	14	2.7	120	--



MEMBER
CANADIAN TESTING
ASSOCIATION

Certified by *Hart Bichler*



CHEMEX LABS LTD.

212 BROOKSBANK AVE.
NORTH VANCOUVER, B.C.
CANADA V7J 2C1

TELEPHONE: (604) 984-0221
TELEX: 043-52597

• ANALYTICAL CHEMISTS

• GEOCHEMISTS

• REGISTERED ASSAYERS

CERTIFICATE OF ANALYSIS

TO : CHALICE MINING INC.

P.O. BOX 2376
SECHLT, B.C.
V0N 3A0

CERT. # : A8411108-001-A
INVOICE # : 18411108
DATE : 3-APR-84
P.O. # : NONE

ATTN: STEVE HODGES

Sample description	Prep code	Cu ppm	Pb ppm	Zn ppm	Aj ppm	AJ-AA ppb	
3L 2 100N 0+80E	202	15	3	48	0.1	<10	--
3L 2 200N 0+60E	202	20	4	30	0.1	<10	--



MEMBER
CANADIAN TESTING
ASSOCIATION

Certified by *Hart Bickler*

CHALICE MINING INC.

September 10, 1984

ROCK SAMPLE DESCRIPTION

- B1 0 + 85N 5MW
- NBL 200N 220E
- NBL 220N 0 + 200E

The above three samples are an altered biotite granodiorite with epidote and chlorite.

- BL 2 L500 25W

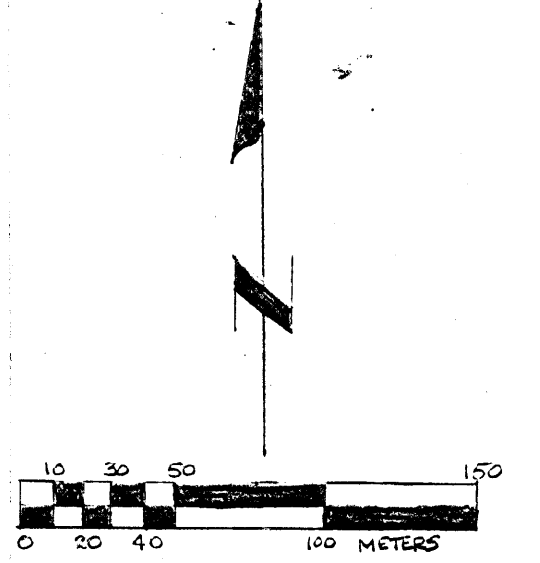
This sample was taken from a 0.5 meter quartz vein at 310 /V. Visible minerals included, pyrite, chalcopryite and galena.

- WL

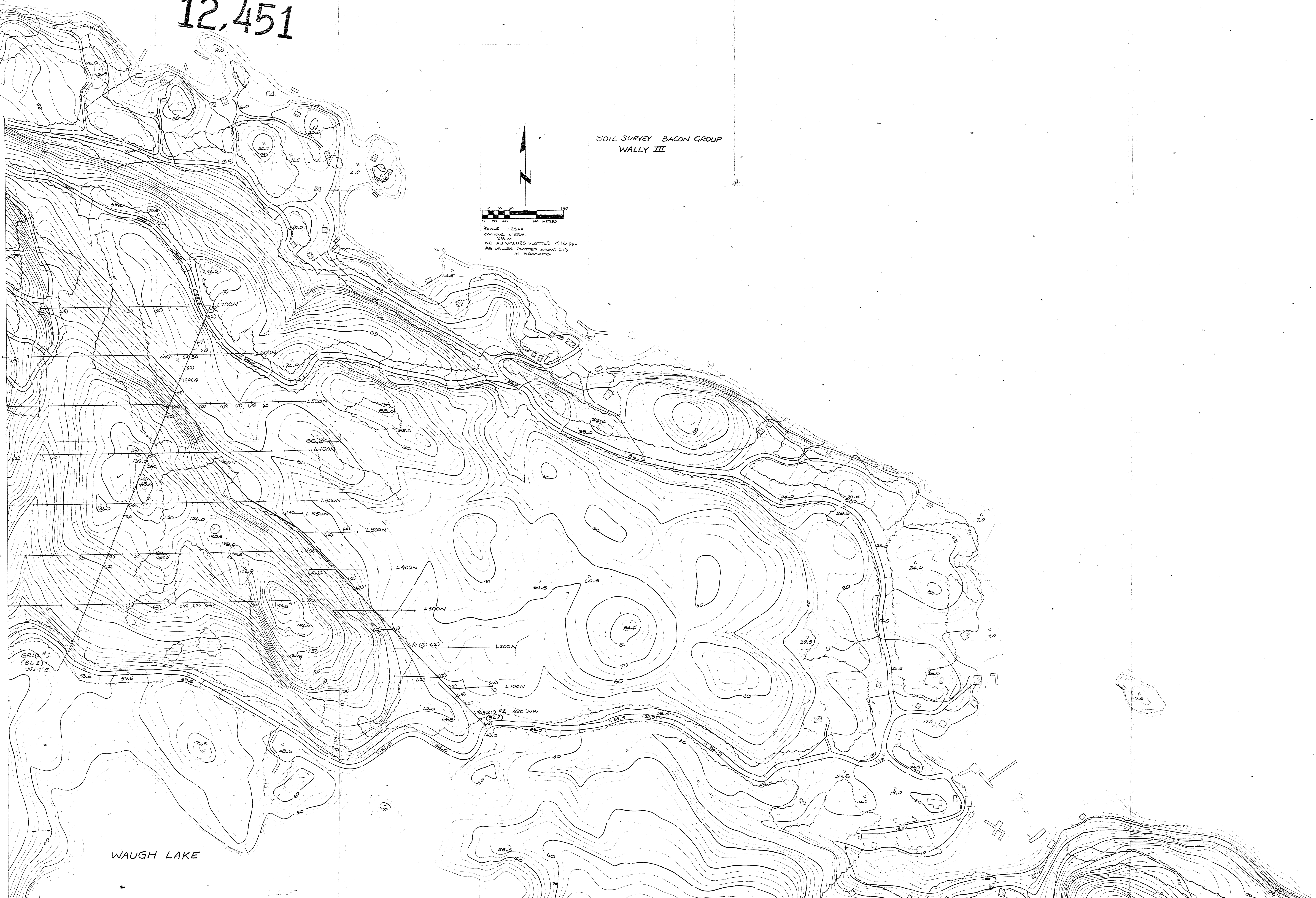
10 mm quartz shears in diorite. Mineralization consisted of chalcopryite and pyrite.

GEOLOGICAL BRANCH
ASSESSMENT REPORT
12,451

SOIL SURVEY BACON GROUP
WALLY III



SCALE 1:2500
CONTOUR INTERVAL
2.5 M
NO. VALUES PLOTTED < 10 196
ALL VALUES PLOTTED ABOVE (1)
IN BRACKETS (1)



WAUGH LAKE

GRID #1
(841)
N 24° E



CHALICE MINING INC.	
CHALICE I CLAIMS EXTENSION	
PRELIMINARY RECONNAISSANCE TYPE MAPPING	
	McElvanney Surveying & Engineering Ltd. 1160 Alberni Street, Vancouver, B.C., Canada
Compiled from aerial photography taken in July 1964 at a scale of 1:40,000	DATE INTERVAL SHEET
SCALE 1:2500	DATE INTERVAL SHEET
DATE COMPILED MAY 1983	SHEET NUMBER 3

REF. No. 40022-2