

84-#607 - 12581

8

DIAMOND DRILL REPORT

on the

**GOLD 1, 2 & 3 MINERAL CLAIMS
Cariboo Mining Division
N.T.S. 93A/15
52°19'N 121°30'W**

For

**PACIFIC RIDGE RESOURCES CORP.
810 - 675 West Hastings Street
Vancouver, B.C. V6B 1N2**

Work Done: May 10-15, 1984

by

**PHIL'S DIAMOND DRILLING LTD.
R.R. #1, 100 Mile House, B.C. V0K 2E0**

Report by

**D.L. Cooke, Ph.D., P.Eng.
D.L. COOKE AND ASSOCIATES LTD.
810 - 675 West Hastings Street
Vancouver, B.C. V6B 1N2**

August 7, 1984 **GEOLOGICAL BRANCH
ASSESSMENT REPORT**

12,581

TABLE OF CONTENTS

	Page
SUMMARY AND CONCLUSIONS	1
INTRODUCTION	2
LOCATION AND ACCESS	2
GEOLOGY	3
DIAMOND DRILL RESULTS	3
RECOMMENDATIONS	4

ILLUSTRATIONS

Figure 1	Location Map - Gold 1-3 Claims
Figure 2	Drill Hole Locations Gold 1, 2, 3 1:50,000

APPENDICES

Appendix I	Statement of Qualifications
Appendix II	Statement of Expenditures
Appendix III	Drill Hole Record DDH 894-1 and 84-2
Appendix IV	Geochemical Assay Certificate Acme Analytical Laboratories Ltd.

SUMMARY AND CONCLUSIONS

The Gold claims cover Miocene basalts, which in places overlie Eocene gravels and/or Triassic volcanic and sedimentary rocks. The property is located 9 km west of Horsefly, B.C. and straddles the highway to Williams Lake.

Two NQ diamond drill holes were bored to test the basalts and probable underlying gravels for copper and gold. The total footage drilled was 520 feet (158.5 metres). Native copper was encountered in both holes, which ended in the basalts without penetrating through to the underlying rocks.

It is concluded that there is still a good possibility of intersecting auriferous gravels below the basalts on the Gold claims. This hypothesis may be tested by deepening either of the two holes which were drilled or boring a third hole elsewhere on the property where the basalt cap is thinner than in these holes.

INTRODUCTION

The Gold claims were staked in 1981 by Frank Onucki, a local prospector. They are presently under option from Mr. Onucki to Pacific Ridge Resources Corp. and Ark Energy Ltd. Pacific Ridge Resources Corp. is the operator.

Claim data are as follows:

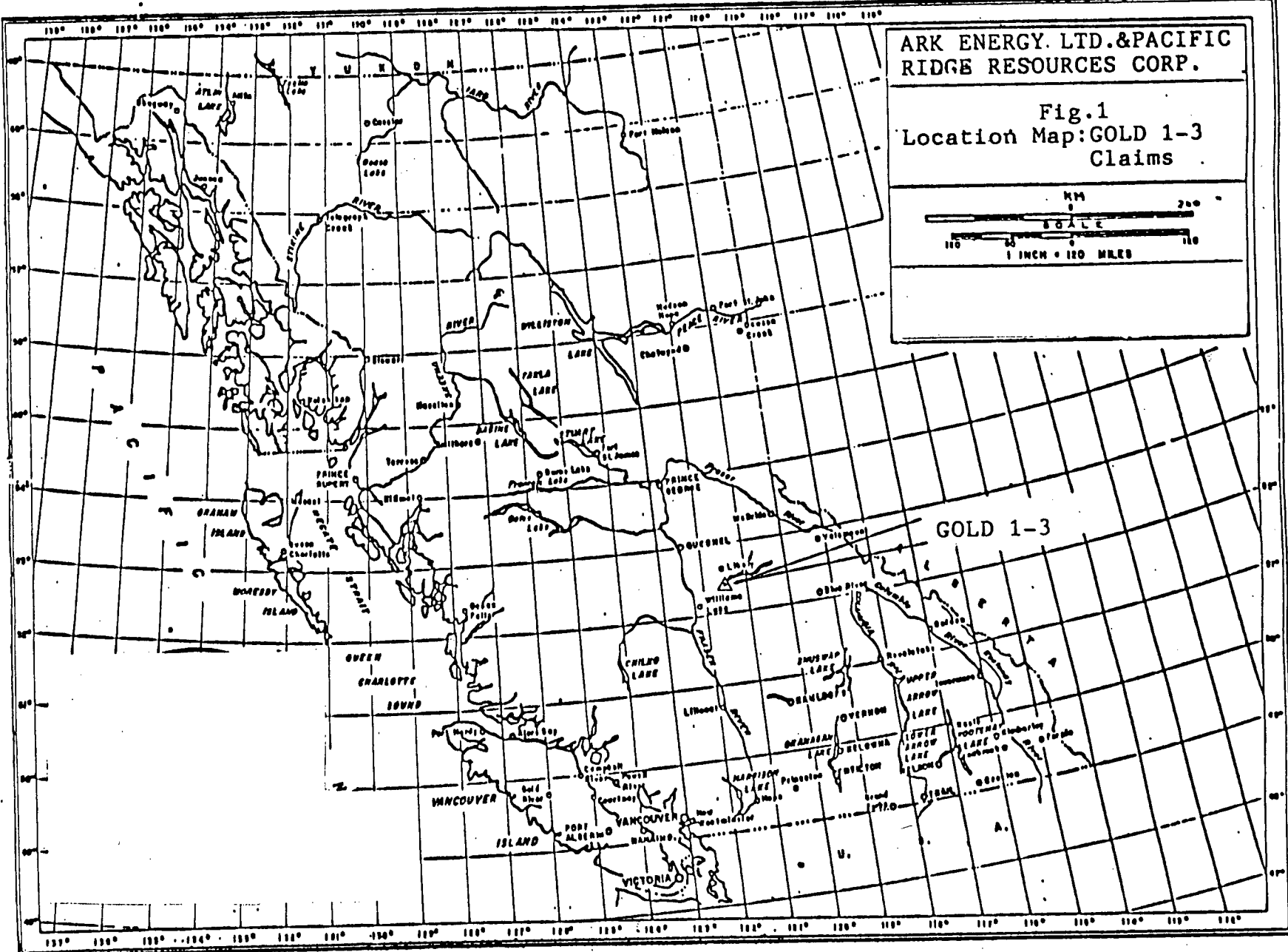
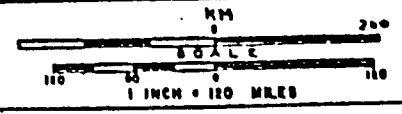
Claim	Units	Record Nos.	Expiry Date
Gold 1	1	3931	27 August 1984
Gold 2	1	3932	27 August 1984
Gold 3	9	3933	27 August 1984

LOCATION AND ACCESS (Figure 1)

The claims are situated 9 km west of Horsefly, B.C. on the highway to Williams Lake. The claims are accessible by road. The area is generally flat to gently rolling timber and farm land, lying at elevations between 820 and 930 metres.

ARK ENERGY, LTD. & PACIFIC
RIDGE RESOURCES CORP.

Fig. 1
Location Map: GOLD 1-3
Claims



GEOLOGY

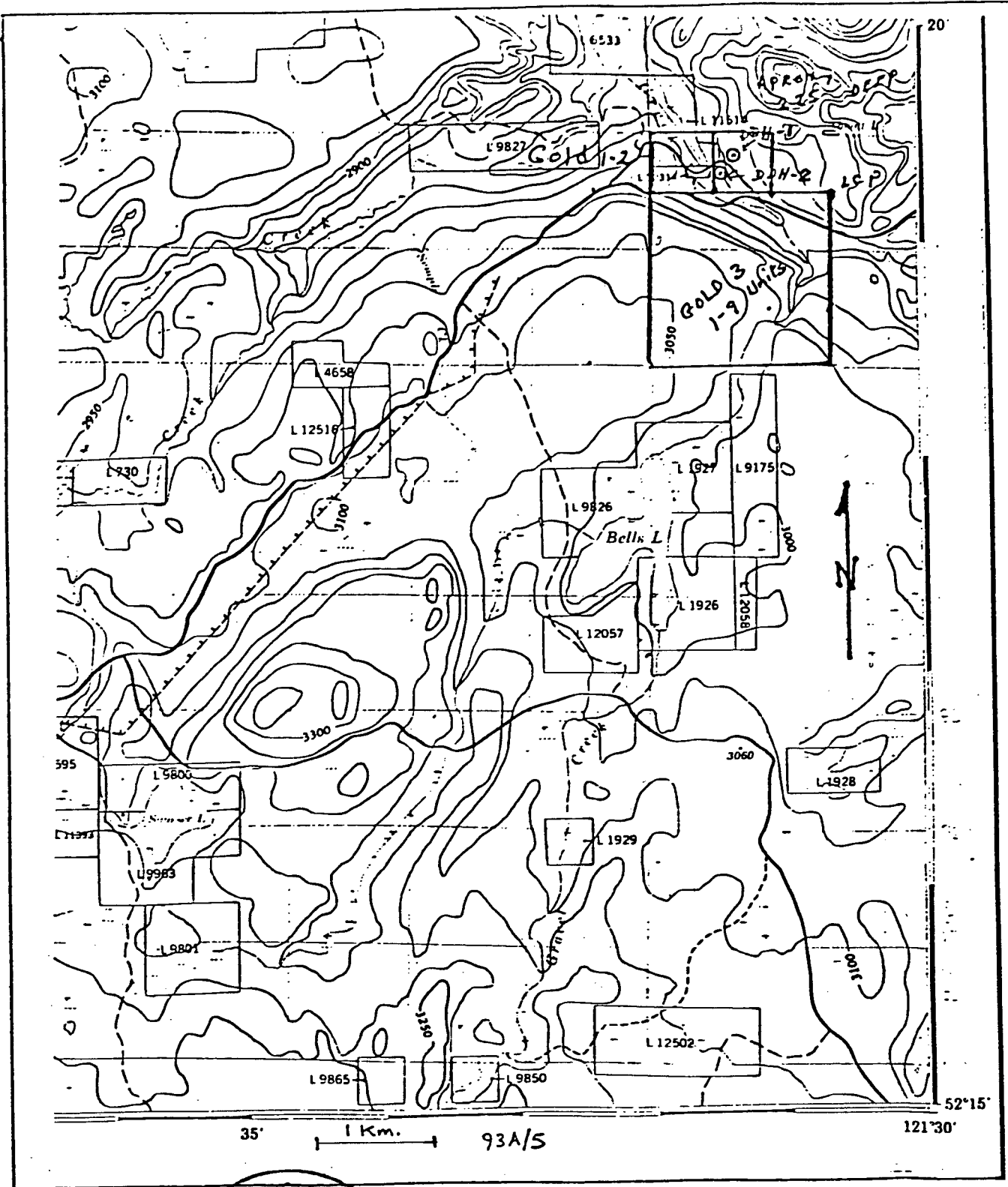
Regionally, the area lies within the Quesnel Trough which consists of Upper Triassic volcanic and sedimentary rocks, pierced by Jurassic to Cretaceous granitic and alkalic intrusions. The Gold claims lie on the northern margin of a large area of Tertiary (Miocene) basalts which in places overlie the older Triassic to Cretaceous rocks.

In the Horsefly area interest in placer gold exploration has been centred on the recent gravels of the Horsefly River. Some attention has also been directed to the gravels beneath the Tertiary basalt flows, which may in part be the source of gold concentrated in younger river channel gravels. Along Moffatt Creek, a few kilometres to the east of the Gold claims, auriferous gravels below the basalts have been referred to as "white channel gravels". Native copper has been reported from the basalts.

DIAMOND DRILL RESULTS (Figure 2)

A total of 158.5 metres of NQ diamond drilling was done in two holes to test for copper in the Tertiary basalts, and for gold in any underlying gravels. The two holes are located on the Gold #2 claim, and are shown in Figure 2. Both holes were terminated in basalts.

The drill core is stored at 16331 Bell Road, Surrey, B.C. The cost of the drill program is \$9227. A cost breakdown is given in Appendix II. Details of the drill logs are given in Appendix III, and the assay results in Appendix IV.



GOLD 1, 2, 3

CARIBOO M.D. NTS 93A/15

1:50,000

ARK ENERGY LTD.
PACIFIC RIDGE RESOURCES CORP.

Topography and diamond drill hole locations.

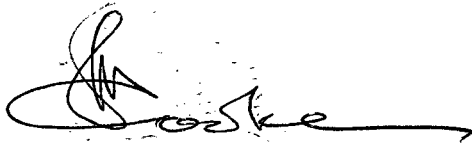
Fig. 2

RECOMMENDATIONS

It is recommended that consideration be given to further testing for the presence of auriferous Eocene gravels or Triassic sedimentary rocks below the Miocene basalts on the Gold claims. This may be accomplished by either deepening the two holes already drilled or by drilling another hole where the basalt cover is thinner.

Report by:

D.L. COOKE AND ASSOCIATES LTD.

A handwritten signature in black ink, appearing to read 'D.L. Cooke', with a long horizontal flourish extending to the right.

D.L. Cooke, Ph.D., P.Eng.

Appendix I

STATEMENT OF QUALIFICATIONS

I, DAVID LAWRENCE COOKE, of the Municipality of Surrey, in the Province of British Columbia, hereby certify:

1. That I am a Consulting Geologist residing at 16331 Bell Road, Surrey B.C. V3S 1J9, with a business office at 810 - 675 West Hastings Street, Vancouver, B.C. V6B 1N2.
2. That I graduated with a B.Sc. degree in Geology from the University of New Brunswick in 1959, and with an M.A. degree and Ph.D. degree in Geology from the University of Toronto in 1961 and 1966 respectively.
3. That I have practiced my profession as an exploration geologist from 1959 to the present time in Canada, the U.S.A., Mexico, the Caribbean and South America.
4. That I am a Registered Member of the Association of Professional Engineers of the Province of British Columbia.
5. That I have conducted regional and property exploration work in the Horsefly area and am familiar with the geology of the area.
6. That I am the author of this diamond drill report on the Gold 1, 2 and 3 mineral claims, dated August 7, 1984.



D.L. COOKE, Ph.D., P.Eng.

Appendix II

STATEMENT OF EXPENDITURES

DIAMOND DRILLING

<u>Direct</u>	500 feet of NQ drilling at \$17/foot		\$ 8,500
<u>Indirect</u>			
	Shipping of Core	\$ 100	
	Assays	127	227

SUPERVISION

	May 10, 1984 - H.L. Williams 1 day at \$250/day		250
--	--	--	-----

REPORT AND DRAFTING

	Report - D.L. Cooke, August 7, 1984 1 day at \$250/day		250
--	---	--	-----

TOTAL COSTS \$ 9,227

NOTE: Apply for work credits as follows:

Claim	Units	No. of Years Each	Total Amount
Gold #1	1	4	\$ 700
Gold #2	1	4	700
Gold #3	9	4	6,300
TOTAL APPLIED			7,700

Portable assessment credits to be credited to operator - Pacific Ridge Resources Corp.	1,527
--	-------

TOTAL WORK DONE \$ 9,227

Appendix III

DRILL HOLE RECORD

DDH 84-1 AND 84-2

DRILL HOLE RECORD

Hole Location: Gold#2
 Azimuth :
 Dip : 90°
 Size: NQ

PROPERTY: Gold 1,2,& 3
 N. T. S. 93 A/15
 LOGGED BY: D. L. Cooke,
 D. L. COOKE & ASSOCIATES LTD.

Date: May 17/84
HOLE # DDH 84-1

DEPTH		DESCRIPTION	FOOTAGE			ASSAYS(%)		
From	To		From	To	Rec	Cu	Ag	Au
						ppm	ppm	ppb
5	77	Brown - weathering olivine basalt breccia. Abundant carbonate and zeolite in matrix and veinlets. Carbonate vein at 65-66'	60	70		92	.3	5
77'	124'	Brown - weathering, vesicular olivine basalt breccia. Vesicles are filled by white and pale green zeolites and carbonate. Trace magnetite throughout. Trace native copper, as disseminations in light brown patches and on margins of carbonate veins.						
124'	134'	Bedded, brown-weathering basaltic tuff. Bedding at 75-80° to core axis.						
134'	152'	Olivine basalt breccia. Tuff matrix: 134-140; Carbonate and zeolite matrix; 140-152: Minor disseminated magnetite.						
152'	268'	Brown to green olivine basalt. Some vesicles and patches of carbonate and zeolites. Olivine constitutes 30% to 50% of rock.	220	230		120	.4	5
		224 - Native copper associated with lighter green, vuggy epidote seam.	230	240		156	.4	5
		242 - Native copper in carbonate patch.	240	250		80	.3	5
		262 - 268 - Broken, weathered, brown, vuggy.	250	264		72	.4	5
		264 - Native copper in vesicles and light brown, limonite patches. END OF HOLE: 268'						

DRILL HOLE RECORD

Hole Location: Gold #2
Azimuth :
Dip : 90°

PROPERTY: Gold 1,2,& 3
N.T.S.: 93 A/15
LOGGED BY: D. L. Cooke
 D. L. Cooke & Associates Ltd.

HOLE# DDH 84-2
Date: May 17/84

Size: NQ

DEPTH		DESCRIPTION	FOOTAGE			ASSAYS(%)		
From	To		From	To	% Rec	Cu	Ag	Au
0	9'	Overburden				ppm	ppm	ppb
9	15'	Rubble weathered basalt						
15	24'	Vuggy, vesicular, olivine basalt. Zeolite fillings. Trace magnetite, chalcedony. Brown jasperoid pseudomorphs & seams. The odd pyrite fracture.	15	20		24	.3	10
			20	30		37	.5	5
24	46'	Olivine basalt. Jasperoid pseudomorphs and seams are abundant plus carbonate veinlets.	30	40		102	.4	5
46	50'	Brown-weathering basalt breccia. Carbonate and zeolites occur in matrix and vesicles.						
50	64'	Brown to green olivine basalt flow and fragmental. Some massive, some vesicular sections.						
64	83'	Brown to green olivine basalt, as above. Red jasperoid limonite after olivine. Trace native copper in limonite pseudomorphs and serpentine veinlets at 79' and 82'.	70	80		96	.4	5
			80	90		32	.4	5
83	144'	Brown to green, vesicular massive olivine basalt. Trace native copper at vesicle margins at 107'; 134', in epidote-rich 1' patch, 139.5' in carbonate patch. 132-144' - Coarsely amygdaloidal. Trace native copper at margins of vesicles.	130	140		54	.3	5
144	154'	Massive green olivine basalt - Lesser number of	140	145		520	.5	5

DRILL HOLE RECORD

Hole Location: Gold #2
 Azimuth :
 Dip : 90°

PROPERTY:
 N.T.S.:
 LOGGED BY: D. L. Cooke
 D. L. Cooke & Associates Ltd.

HOLE# DDH 84-2
 Date:

DEPTH		DESCRIPTION	FOOTAGE			ASSAYS(%)		
From	To		From	To	% Rec	Cu ppm	Ag ppm	Ag ppb
		(cont'd)						
		vesicles noted between 144' & 150'; increasing between 150' and 154'. 142-144': Moderate amounts of native copper in carbonate vesicles and disseminations. Trace magnetite or chalcocite in vesicles. 144-154: Abundant native copper in fractures and as disseminations.	145	150		615	.5	15
			150	155		138	.4	5
			155	160		55	.5	5
154	171'	Vesicular olivine basalt. Epidote, chlorite amphibole alteration. Trace native copper. Brown in colour.	160	170		33	.2	5
171	239'	Less vesicular olivine basalt. Green in colour. Note same brown strongly vesicular sections. Unmineralized.						
239	242'	Vesicular olivine basalt breccia						
242	252'	Massive, green olivine basalt. Disseminated native copper at 247', 251'. Massive, unaltered to end. END OF HOLE 252'.	230	240		35	.3	5
			240	252		112	.3	5

Appendix IV

GEOCHEMICAL ASSAY CERTIFICATE

ACME ANALYTICAL LABORATORIES LTD.

ANALYTICAL LABORATORIES LTD.

DATE RECEIVED MAY-23-84

852 E. HASTINGS, VANCOUVER B.C.

PH: (604)253-3158 COMPUTER LINE:251-1011

DATE REPORTS MAILED

May 24/84

GEOCHEMICAL ASSAY CERTIFICATE

A .50 GM SAMPLE IS DIGESTED WITH 3 ML OF 3:1:3 HCL:HNO3:H2O AT 90 DEG. C. FOR 1 HOUR.

THE SAMPLE IS DILUTED TO 10 MLS WITH WATER. ELEMENTS ANALYSED BY AA : CU AG AU*

SAMPLE TYPE : COKE - CRUSHED AND PULVERIZED TO -100 MESH.

AU* - 10 GM, IGNITED, HOT AQUA REGIA LEACHED, MIBK EXTRACTION, AA ANALYSIS.

ASSAYER *D. Toye* DEAN TOYE, CERTIFIED B.C. ASSAYER

PACIFIC RIDGE RES FILE# 84-0833

PAGE# 1

SAMPLE	CU PPM	AG PPM	AU* PPB	DDH 84-1
92001	92	.3	5	60' - 70'
92002	120	.4	5	220 - 230
92003	156	.4	5	230 - 240
92004	80	.3	5	240 - 250
92005	72	.4	5	250 - 264
				<u>DDH 84-2</u>
92006	24	.3	10	15' - 20'
92007	37	.5	5	20 - 30
92008	102	.4	5	30 - 40
92009	96	.4	5	70 - 80
92010	32	.4	5	80 - 90
92011	54	.3	5	130 - 140
92012	520	.5	5	140 - 145
92013	615	.5	15	145 - 150
92014	138	.4	5	150 - 155
92015	55	.5	5	155 - 160
92016	33	.2	5	160 - 170
92017	35	.3	5	230 - 240
92018	112	.3	5	240 - 252