

84-#602 - 12585.  
7

Geochemical Report

- on the -

Lucky Mineral Claim

Cariboo Mining Division, British Columbia  
N.T.S. 93A/7E

- for -

Nieles Kriberg

P.O. Box 228

Lac la Hache, B. C.

Prepared by:

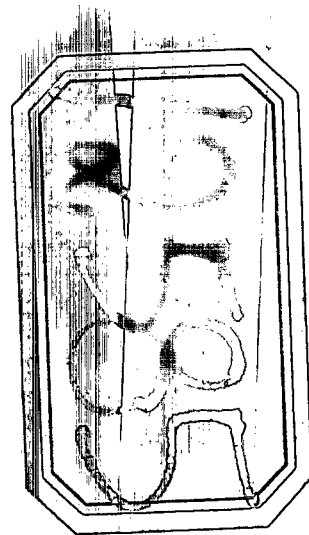
G. Belik and Associates Ltd.

664 Sunvalley Drive

Kamloops, B. C.

G. D. Belik, M. Sc.

August 10, 1984



Geochemical Report

- on the -

Lucky Mineral Claim

Cariboo Mining Division, British Columbia  
N.T.S. 93A/7E

52°17', 120°40'

- for -

Nieles Kriberg

P.O. Box 228

**GEOLOGICAL BRANCH** and Cache, B. C.  
**ASSESSMENT REPORT**

12,585

Prepared by:

G. Belik and Associates Ltd.

664 Sunvalley Drive

Kamloops, B. C.

G. D. Belik, M. Sc.

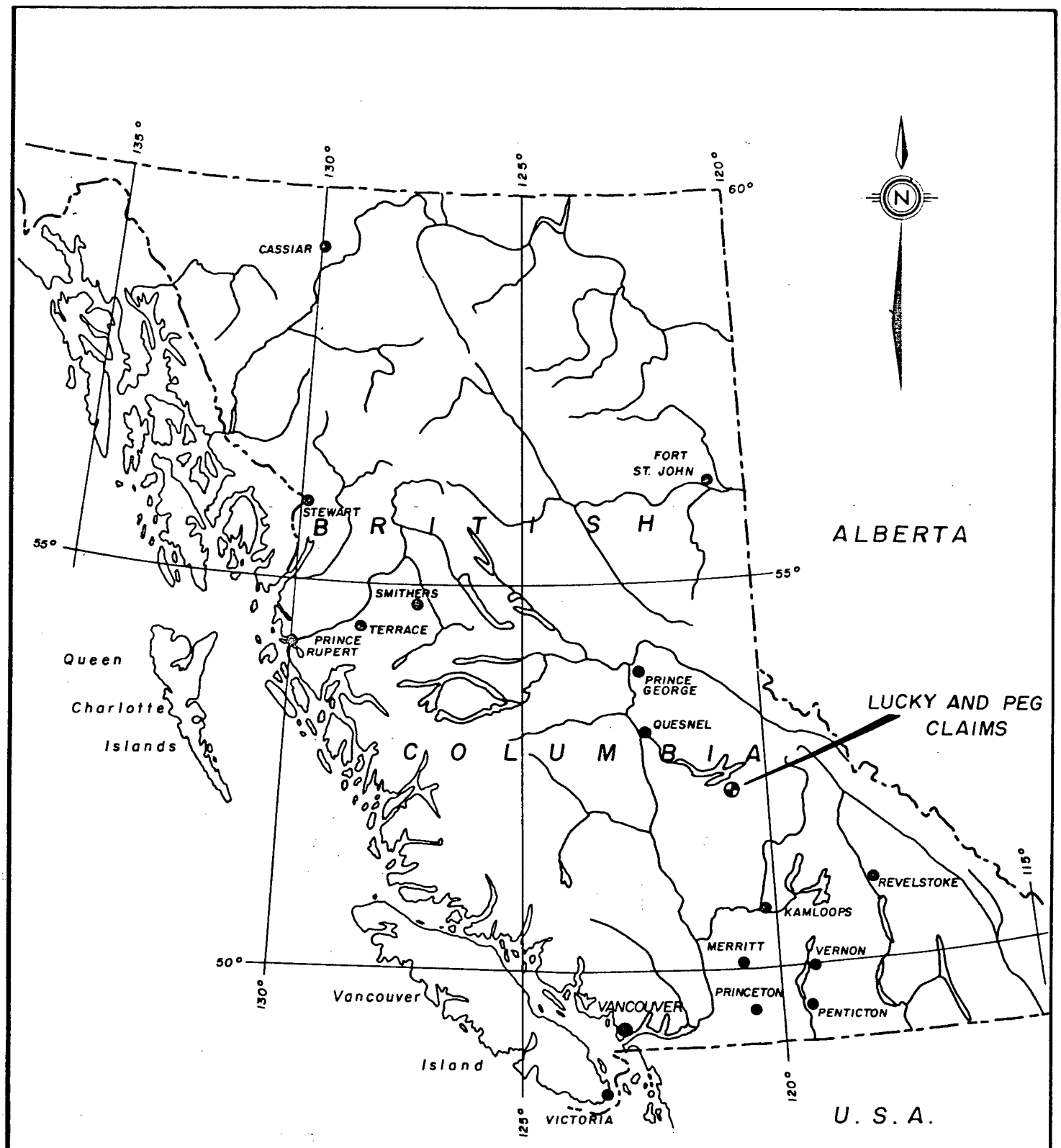
August 10, 1984

Table of Contents

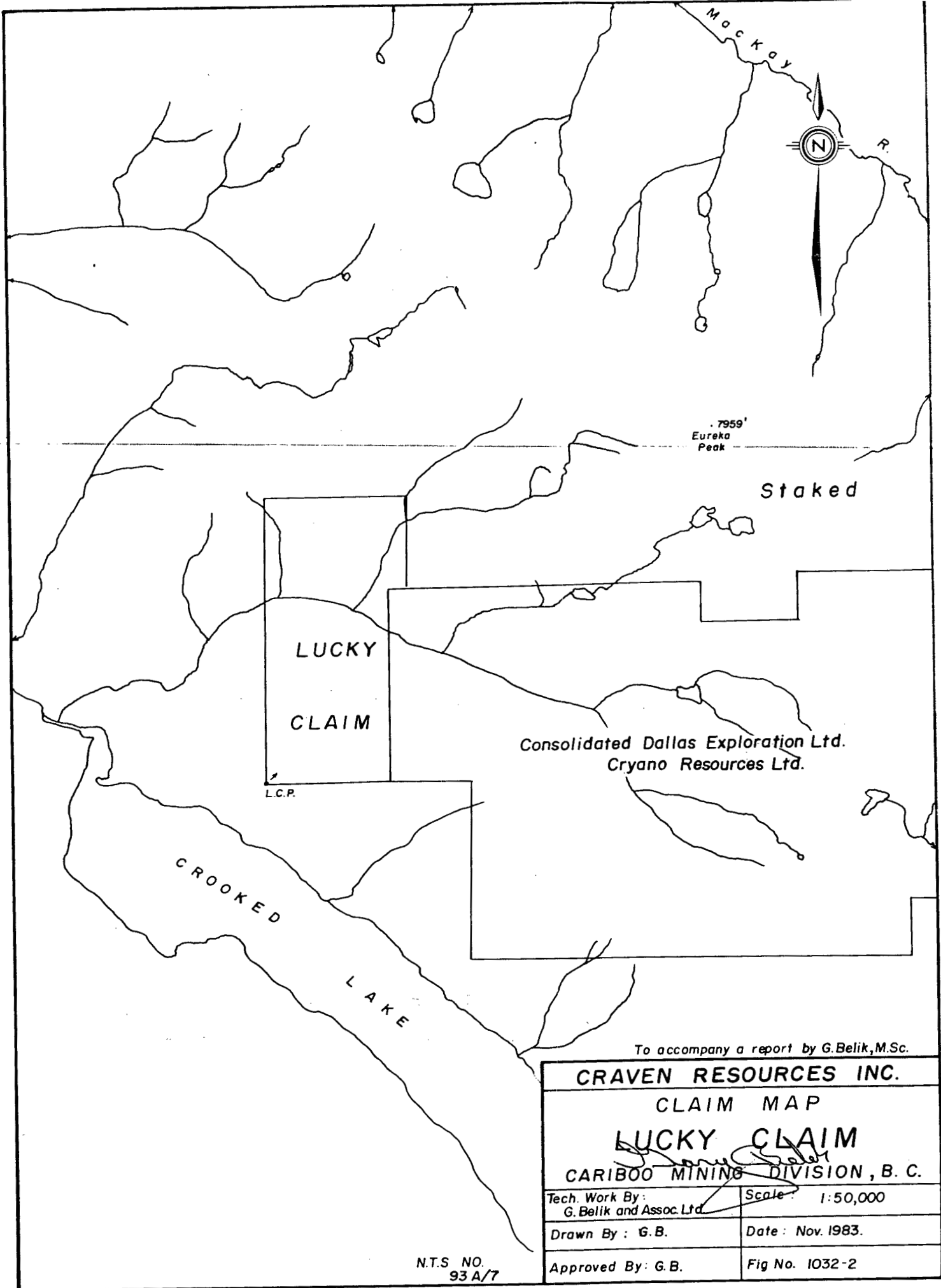
	<u>Page No.</u>
INTRODUCTION . . . . .	1
LOCATION AND ACCESSIBILITY . . . . .	4
PHYSIOGRAPHY AND VEGETATION . . . . .	4
PROPERTY . . . . .	5
GENERAL GEOLOGICAL SETTING . . . . .	5
SOIL GEOCHEMISTRY . . . . .	7
Grid Preparation . . . . .	8
Sampling Method . . . . .	8
Laboratory Determination Method . . . . .	9
Presentation of Results . . . . .	9
Discussion of Results . . . . .	9
 FIGURES:	
1032-1 : Location Map . . . . .	2
1032-2 : Claim Map . . . . .	3
1032-3 : General Geological Setting . . . . .	6
 APPENDIX:	
I : Geochemical Analyses . . . . .	
II : Statement of Expenditures . . . . .	
III : Statement of Qualifications G. D. Belik . . . . .	

## Introduction

This report presents the results of a soil sampling program carried out during October 31 to November 1, 1983, on the Lucky mineral claim situated near Crooked Lake in the Cariboo Mining Division, British Columbia. Field work was supervised by G. Belik of G. Belik and Associates Ltd., 664 Sunvalley Drive, Kamloops, B. C.



CRAVEN RESOURCES INC.	
LOCATION MAP	
LUCKY AND PEG CLAIMS	
<i>G. Belik</i> CARIBOO MINING DIVISION, B.C.	
Technical Work by: G. Belik and Assoc. Ltd.	Date : Nov. 1983.
Scale : 1cm. = 87 km.	Dwg No. 1032-1



To accompany a report by G. Belik, M.Sc.

<b>CRAVEN RESOURCES INC.</b>	
CLAIM MAP	
<b>LUCKY CLAIM</b>	
CARIBOO MINING DIVISION, B. C.	
Tech. Work By: G. Belik and Assoc. Ltd.	Scale: 1:50,000
Drawn By: G.B.	Date: Nov. 1983.
Approved By: G.B.	Fig No. 1032-2

N.T.S. NO.  
93 A/7

### Location and Accessibility

The Lucky claim is centered about 100 km east-north east of Williams Lake at geographic co-ordinates  $52^{\circ} 17'$  North Latitude and  $120^{\circ} 41'$  West Longitude.

The northern part of the claim is accessible on foot via about 3.0 km of overgrown logging road which extends northeast from the west end of Crooked Lake. Crooked Lake is accessible by well-travelled, public access roads from Horsefly or 100 Mile House.

### Physiography and Vegetation

The Lucky claim is situated on the southwest flank of a northwest-trending series of rugged ridges and peaks which extend between and parallel to the MacKay River and McKusky Creek/Crooked Lake Valleys. Eureka Peak, the highest point in the chain, attains an elevation of 2,428 meters.

The claim area is traversed by creeks and numerous small streams which form part of the McKusky Creek/Crooked Lake drainage basin. The region of the claims is characterized by a late Spring and early Fall with

moist, cool Summers and cold Winters.

Elevation ranges from about 1,050 meters a.s.l. to about 1,800 meters a.s.l. with moderate to steep relief. Large segments of the claim area are covered by an old burn with thick second-growth at lower elevations. Small stands of mature cedar, spruce, balsam and fir locally are preserved.

#### Property

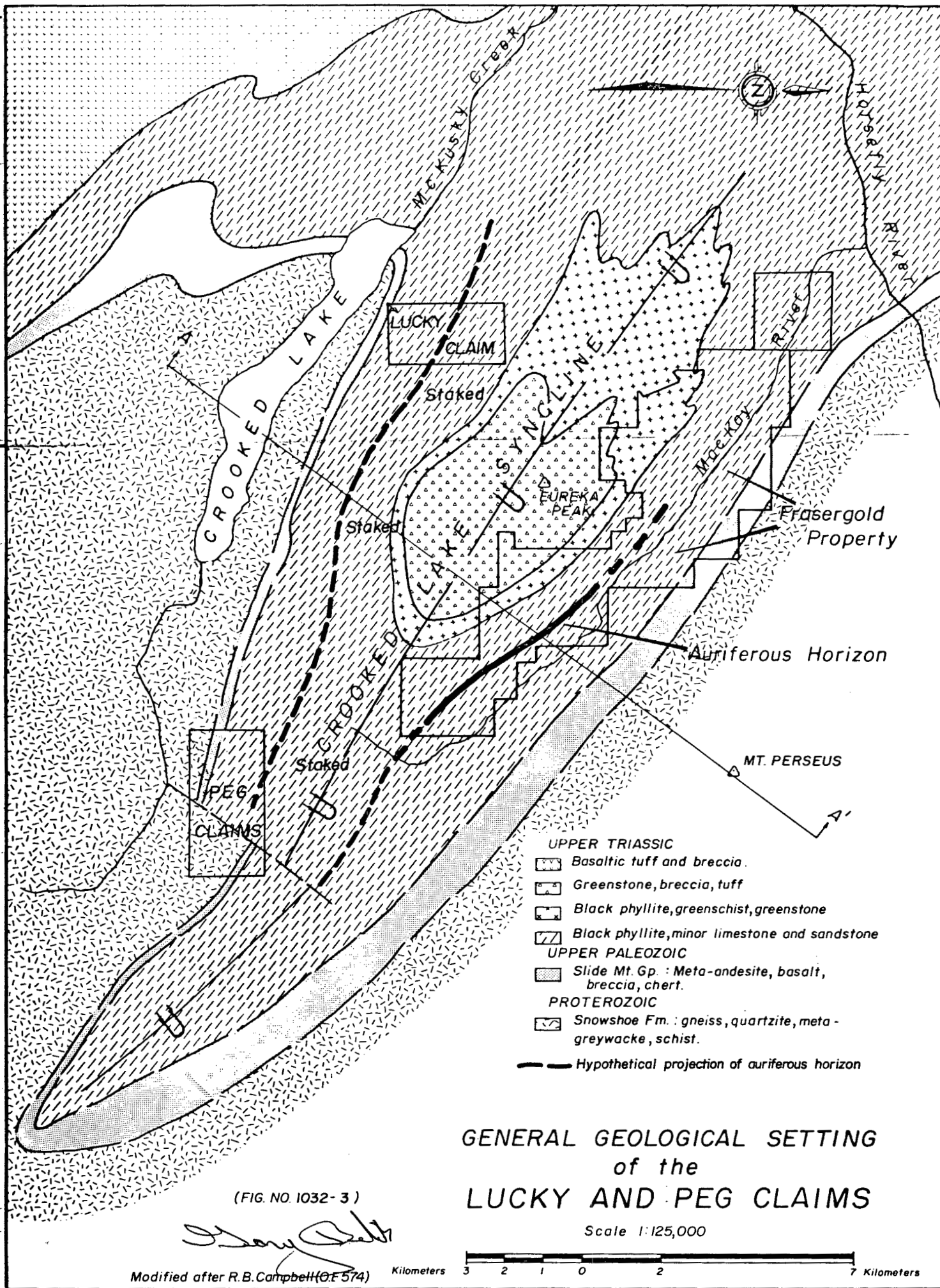
The Lucky claim (record #4970) consists of 18 units. The registered owner of the claim is Mr. Nieves Kriberg of P.O. Box 228, Lac la Hache, B. C.

#### General Geological Setting

The general geological setting within the region of the Lucky claim is summarized in Figure No. 1032-3.

The oldest rocks exposed in the area are paragneiss, leucocratic feldspar-augen gneiss, schist and mylonite of the Proterozoic Snowshoe Formation. Overlying the Snowshoe Formation with apparent major structural dis-





continuity is a 100 meter to 500 meter thick section of andesitic to basaltic metavolcanics. This unit has been mapped as part of the Slide Mt. Group by R. B. Campbell (1978).

Overlying the Slide Mt. Group is a thick section of Triassic metasedimentary and metavolcanic rocks. A thick basal black phyllite sequence, which appears to conformably overlie the Slide Mt. Group, grades upward into alkaline, augite-porphyry flows, tuffs and breccia.

All units have been regionally metamorphosed, tightly folded and display a penetrative crenulation foliation which transposes bedding.

To date no significant mineralization has been identified within the area of the Lucky claim. About 8 km to the northeast, on Eureka Resources' Frasersgold Property, significant gold mineralization has been identified within the Upper Triassic, basal black phyllite sequence. The gold mineralization, which appears to be stratigraphically controlled, occurs both within phyllite and within syntectonic quartz/carbonate veins and lenses.

#### Soil Geochemistry

In total 122 soil samples were collected during the

1983 program. All samples were analysed for gold by Acme Analytical Laboratories Ltd., located at 852 East Hastings Street, Vancouver, B. C.

#### Grid Preparation

In order to carry out the geochemical survey a grid was constructed consisting of 6 lines totalling 6.0 km. Grid lines were marked with orange flagging with sample sites identified by yellow and orange flagging marked with the line number and station location.

Where possible soil samples were taken at 50-meter intervals along all grid lines. Sites not sampled were either due to poor soil development or the presence of bog or swamp.

#### Sampling Method

Samples were obtained by digging holes with a maddock to a depth of 15 cms. to 50 cms. The "B" horizon was sampled or in some cases the "B-C" horizon depending on soil development at each sample location. The samples were placed in waterproof kraft envelopes and the grid station was marked on the envelopes with indelible felt pens.

Laboratory Determination Method

All samples were first dried and then sieved to obtain a -80 mesh fraction. A 10 gm sample was ignited to 600°C and then digested in hot aquia regia (MIBK extraction). Gold values were then determined by Atomic Absorption.

Results for gold are reported from Acme Labs, in parts per billion.

Presentation of Results

Results of the gold analyses for soils are listed in Appendix I and shown on Plan map 1032-4 at a scale of 1:5000.

Discussion of Results

No anomalous gold values were identified within the area surveyed. All samples returned values of 5 parts per billion which is the lowest level of detection reported by Acme Labs.

Respectfully Submitted,

  
G. D. Belik

Appendix I

Geochemical Analyses

ACME ANALYTICAL LABORATORIES LTD.  
852 E. HASTINGS, VANCOUVER B.C.  
PH: 253-3158 TELEX: 04-53124

DATE RECEIVED NOV 4 1983

DATE REPORTS MAILED Nov 10/83

### GEOCHEMICAL ASSAY CERTIFICATE

SAMPLE TYPE : SOIL - DRIED AT 60 DEG C., -80 MESH, PULVERIZED.  
AU\* - 10 GM, IGNITED, HOT AQUA REGIA LEACH MIBK EXTRACTION, AA ANALYSIS.

ASSAYER G. Belik DEAN TOYE, CERTIFIED B.C. ASSAYER

G. BELIK PROJECT # PEGASUS FILE # 83-2839 PAGE# 1

SAMPLE	AU* PFB
10N 25W	5
9+50N 25W	5
9N 25W	5
8+50N 25W	5
8N 25W	5
7+50N 25W	5
7N 25W	5
6+50N 25W	5
6N 25W	5
5+50N 25W	5
5N 25W	5
4+50N 25W	5
4N 25W	5
3+50N 25W	5
3N 25W	5
2+50N 25W	5
2N 25W	5
1+50N 25W	5
1N 25W	5
0+50N 25W	5
0N 25W	5
10N 24W	5
9+50N 24W	5
9N 24W	5
8+50N 24W	5
8N 24W	5
7+50N 24W	5
7N 24W	5
6+50N 24W	5
6N 24W	5
5+50N 24W	5
5N 24W	5
4+50N 24W	5
4N 24W	5
3+50N 24W	5
3N 24W	5
2+50N 24W	5

SAMPLE	AU* PPB
2N 24W	5
1+50N 24W	5
1N 24W	5
0+50N 24W	5
0N 24W	5
10N 23W	5
9+50N 23W	5
9N 23W	5
8+50N 23W	5
8N 23W	5
7+50N 23W	5
7N 23W	5
6+50N 23W	5
6N 23W	5
5+50N 23W	5
4N 23W	5
3+50N 23W	5
3N 23W	5
2+50N 23W	5
2N 23W	5
1+50N 23W	5
1N 23W	5
0+50N 23W	5
0N 23W	5
12N 22W	5
11+50N 22W	5
11N 22W	5
10+50N 22W	5
10N 22W	5
9+50N 22W	5
9N 22W	5
8+50N 22W	5
8N 22W	5
7+50N 22W	5
7N 22W	5
6+50N 22W	5

SAMPLE	AU* PPB
6N 22W	5
5+50N 22W	5
5N 22W	5
4+50N 22W	5
4N 22W	5
3+50N 22W	5
3N 22W	5
2+50N 22W	5
2N 22W	5
1+50N 22W	5
1N 22W	5
0+50N 22W	5
0N 22W	5
0+50SE 22NW	5
1+50SE 22NW	5
2SE 22NW	5
2+50SE 22NW	5
3SE 22NW	5
3+50SE 22NW	5
4SE 22NW	5
4+50SE 22NW	5
5SE 22NW	5
5+50SE 22NW	5
6SE 22NW	5
12N 21W	5
11+50N 21W	5
11N 21W	5
10+50N 21W	5
10N 21W	5
9+50N 21W	5
9N 21W	5
8+50N 21W	5
8N 21W	5
7+50N 21W	5
7N 21W	5



SAMPLE	AU* PFB
6+50N 21W	5
6N 21W	5
5+50N 21W	5
5N 21W	5
4+50N 21W	5
4N 21W	5
3+50N 21W	5
3N 21W	5
2+50N 21W	5
2N 21W	5
1+50N 21W	5
1N 21W	5
0+50N 21W	5
0N 21W	5
11+50N 20W	5
11N 20W	5
10+50N 20W	5
10N 20W	5
9+50N 20W	5
9N 20W	5
8+50N 20W	5
8N 20W	5
7+50N 20W	5
7N 20W	5
6+50N 20W	5
6N 20W	5
5+50N 20W	5
5N 20W	5
4+50N 20W	5
4N 20W	5
3+50N 20W	5
3N 20W	5
2+50N 20W	5
2N 20W	5
1+50N 20W	5
1N 20W	5
0+50N 20W	5
0N 20W	5

Appendix II

Statement of Expenditures

Statement of Expenditures

1). Labour:

a) G. Belik and Associates Ltd.

G. Belik, Consulting Geologist  
-Oct. 31-Nov. 1, 1983  
-1.3 days at \$300.00/day \$390.00

D. Arens, Assistant  
-Oct. 31-Nov. 1, 1983  
-1.4 days at \$150.00/day 210.00

b) Amex Exploration Services Ltd.

D. Broomhall, Assistant  
-Oct. 31-Nov. 1, 1983  
-1.2 days at \$196.00/day 235.20

B. Embury, Assistant  
-Oct. 31-Nov. 1, 1983  
-1.2 days at \$159.25/day 191.10 \$1,026.30

2). Expenses and Disbursements:

a) Helicopter Support \$576.83

b) Truck Rental 146.00

c) Equipment Rental  
-four, 2-way radios 40.00

d) Geochemical Analyses 518.73

e) Room, Board and Travel Expenses 178.00

f) Field Supplies 60.00

g) Freight (ship samples) 10.08

h) Telephone and Misc. Items

20.00

1,549.64

Total

\$2,575.94

Appendix III

Statement of Qualifications

G. D. Belik

**GARY D. BELIK, M.Sc.**

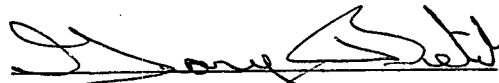
Consulting Geologist  
Mineral Exploration

#6 NICOLA PLACE, 310 NICOLA STREET • KAMLOOPS, B.C. V2C 2P5 • PHONE (604) 374-4247

CERTIFICATE

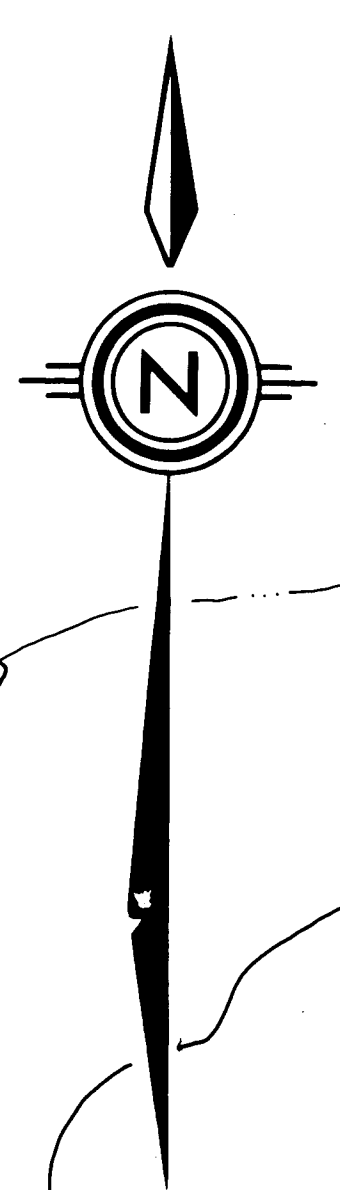
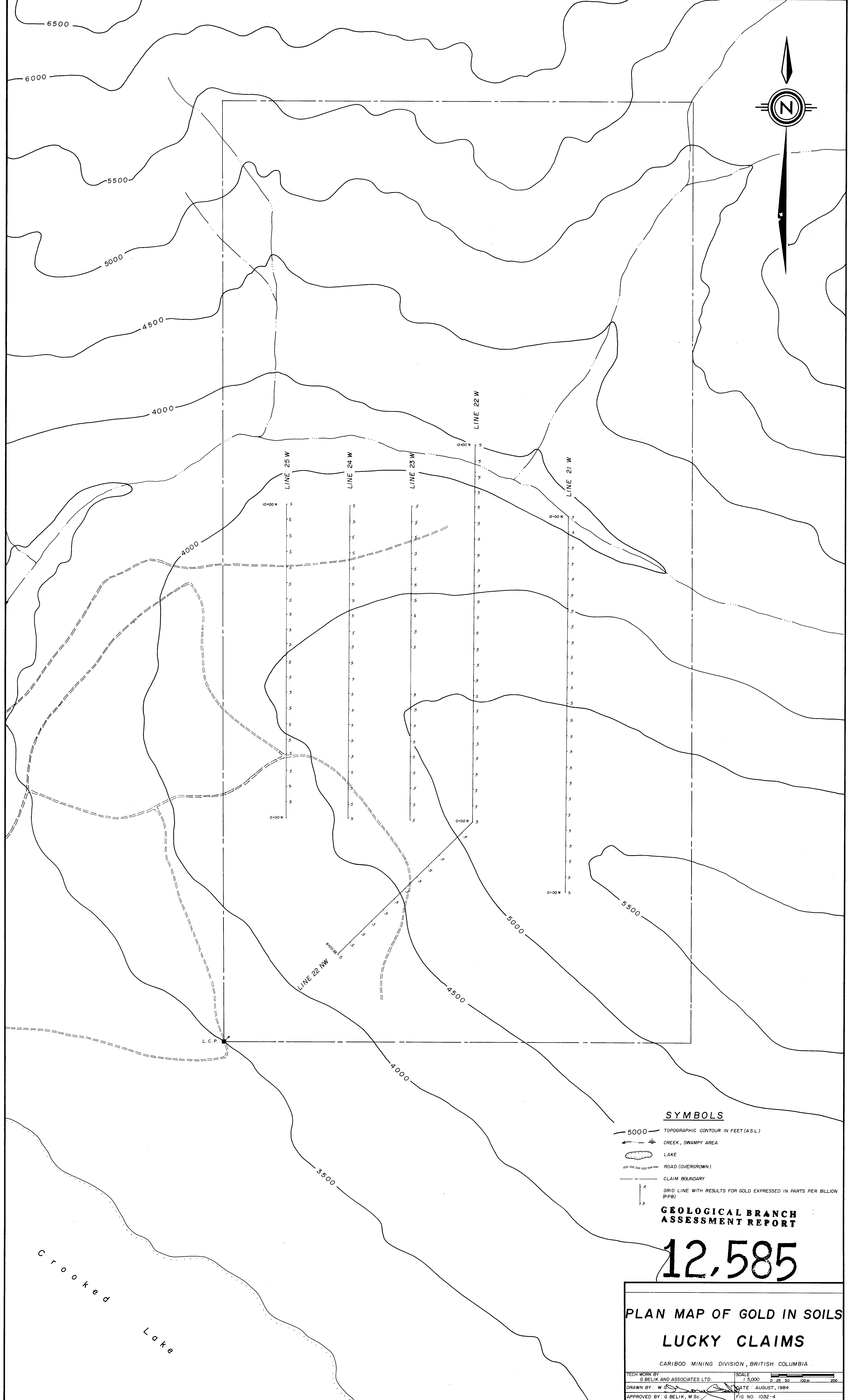
I, GARY D. BELIK, OF THE CITY OF KAMLOOPS, BRITISH COLUMBIA,  
DO HEREBY CERTIFY THAT:

- (1). I am a member of the Canadian Institute of Mining and Metallurgy and a fellow of the Geological Association of Canada.
- (2). I am employed by G. Belik and Associates Ltd. with my office at 664 Sunvalley Drive, Kamloops, B. C.
- (3). I am a graduate of the University of British Columbia with a B. Sc. in Honors Geology and a M. Sc. in Geology.
- (4). I have practised continuously as a geologist since May, 1970



Gary D. Belik, M. Sc.  
GEOLOGIST

KAMLOOPS, B. C.  
August 10, 1984



**SYMBOLS**

- TOPOGRAPHIC CONTOUR IN FEET (A.S.L.)
- CREEK, SWAMPY AREA
- LAKE
- ROAD (OVERGROWN)
- CLAIM BOUNDARY
- GRID LINE WITH RESULTS FOR GOLD EXPRESSED IN PARTS PER BILLION (PPB)

**GEOLOGICAL BRANCH  
ASSESSMENT REPORT**

**12,585**

**PLAN MAP OF GOLD IN SOILS  
LUCKY CLAIMS**

CARIBOO MINING DIVISION, BRITISH COLUMBIA

TECH WORK BY G. BELIK AND ASSOCIATES LTD.	SCALE 1:5,000
DRAWN BY: W. G.	DATE: AUGUST, 1984
APPROVED BY: G. BELIK, M.Sc.	FIG. NO. 1032-4