

84-1030-12668

ASSESSMENT REPORT  
GEOCHEMICAL SAMPLING AND TEST PIT PROGRAM  
GRAN 1 - 6 CLAIMS  
LAID 1-4 CLAIMS

OMINECA MINING DIVISION  
NTS 93F/3#E

Located approximately 13 km south of Capoose Lake, BC

Longitude 125°08', Latitude 53°12'

Owner/operator: B.P. Minerals Limited.

Michael Smith  
Project Geologist

Dr. S.J. Hoffman  
Geochemist

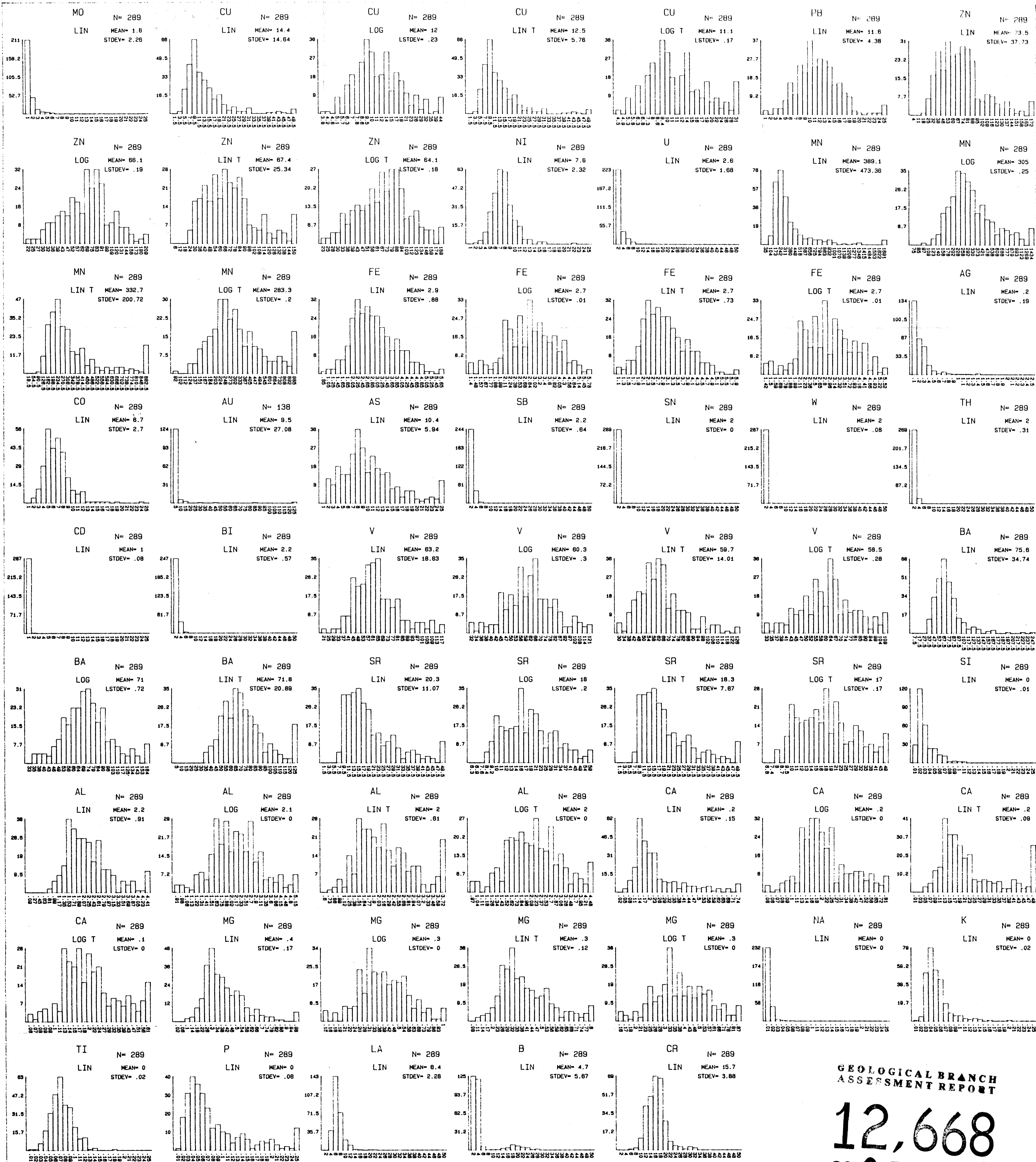
BPVR 84-34

November 1984

**GEOLOGICAL BRANCH  
ASSESSMENT REPORT**

**12,668**

**PART  
2 OF 2**



GEOLOGICAL BRANCH  
ASSESSMENT REPORT

12,668  
PART 2 OF 2

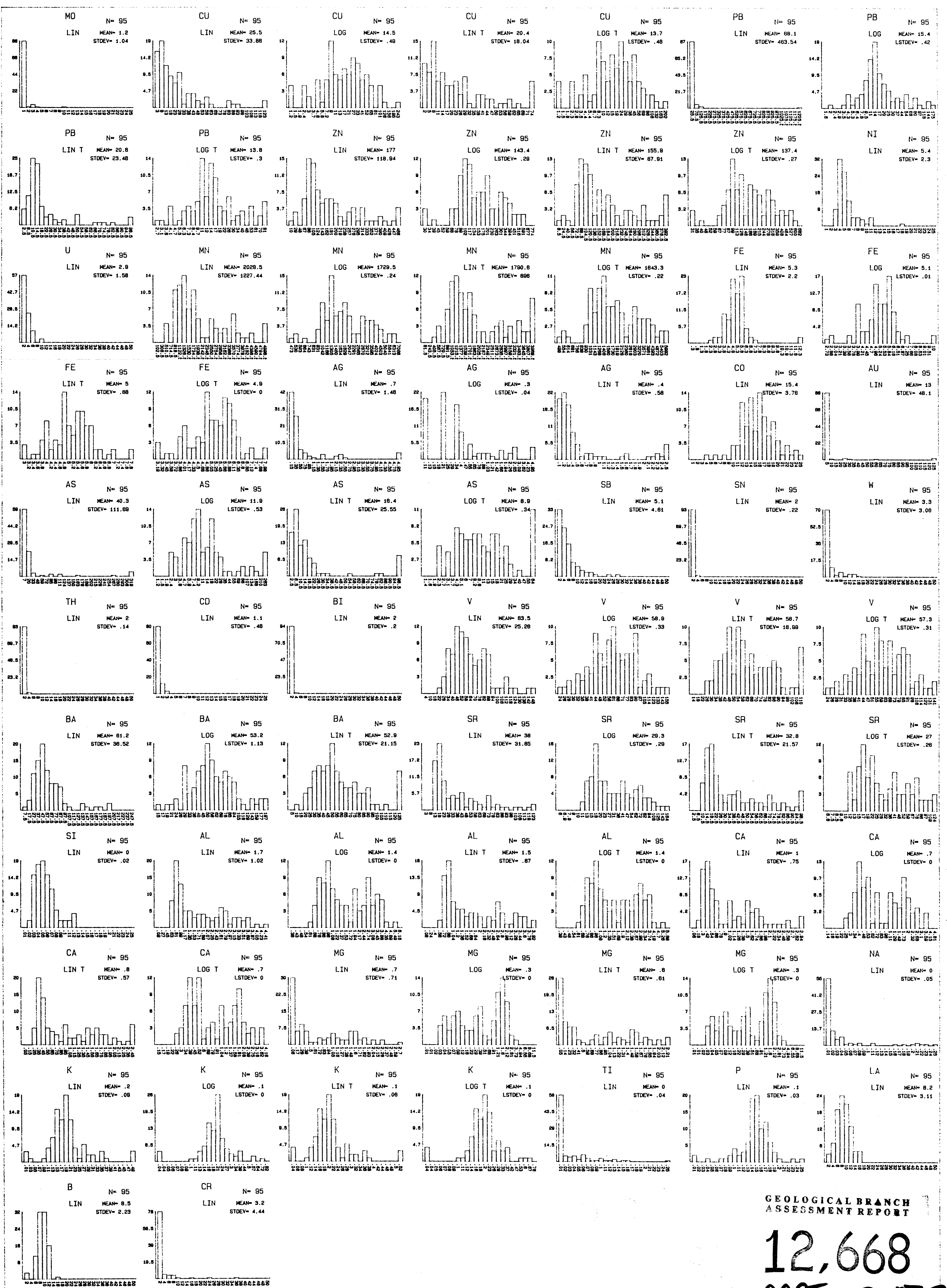
SAMPLE SELECTION CRITERIA

PROPERTY CODE ALL  
SAMPLE TYPE(S) 50  
BEDROCK TYPE(S) ALL  
SOIL HORIZON(S) ALL  
SAMPLE TEXTURE(S) ALL  
OVERBURDEN ORIGIN(S) ALL  
LAB-SIZE FR-EXTRACTION(S) ALL

LEGEND

LIN = LINEAR  
LOG = LOGARITHMIC  
LIN T = TRUNCATED LINEAR  
LOG T = TRUNCATED LOGARITHMIC

BP Minerals Limited			
GRAN AND LAID CLAIMS			
CAPOOSE LAKE PROJECT - B.C.			
1983 SOIL SURVEY			
HISTOGRAMS			
DWG. NO.	DATE FEB 1984	PROJECT 529	FIG.
REPORT NO.	NTS 93F/3	PLATE 1	
TO ACCOMPANY REPORT: BPVR 83-17B			



GEOLOGICAL BRANCH  
ASSESSMENT REPORT

12,668  
PART 2 OF 2

SAMPLE SELECTION CRITERIA

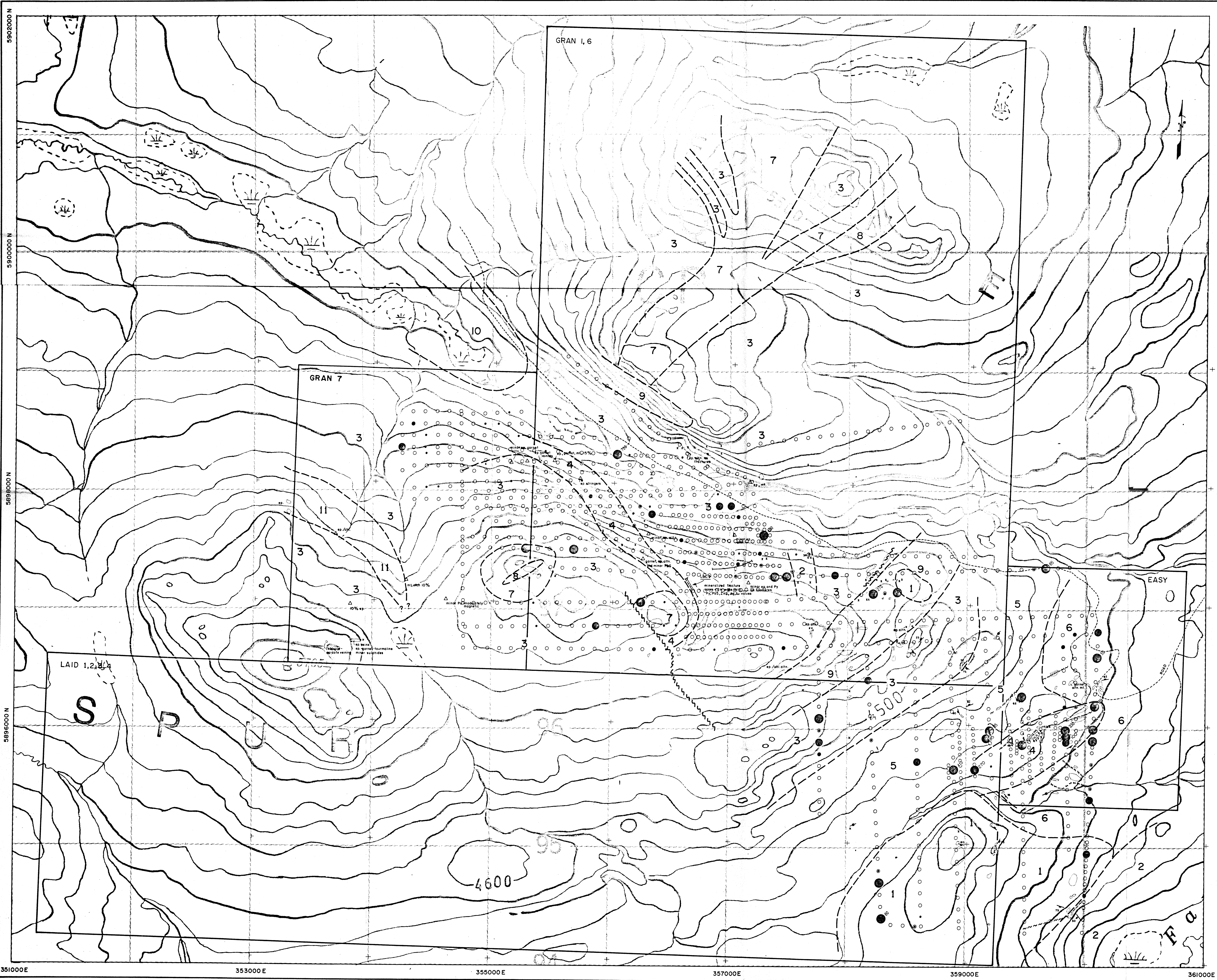
PROPERTY CODE ALL  
 SAMPLE TYPE(S) 81  
 BEDROCK TYPE(S) ALL  
 SOIL HORIZON(S) ALL  
 SAMPLE TEXTURE(S) ALL  
 OVERBURDEN ORIGIN(S) ALL  
 LAB-SIZE FR-EXTRACTION(S) ALL

LEGEND

LIN = LINEAR  
 LOG = LOGARITHMIC  
 LIN T = TRUNCATED LINEAR  
 LOG T = TRUNCATED LOGARITHMIC

BP Minerals Limited			
GRAN AND LAID CLAIMS			
CAPOOSE LAKE PROJECT - B.C.			
LITHOGEOCHEMISTRY FROM 1983 TRENCHING			
HISTOGRAMS			
DWG. NO.	DATE FEB 1984	PROJECT 529	FIG.
REPORT NO.	NTS 93F/3	PLATE 2	
TO ACCOMPANY REPORT: BPVR 83-17 B			

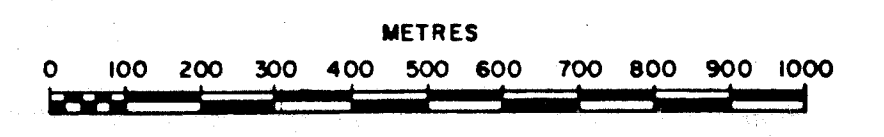




**LEGEND**

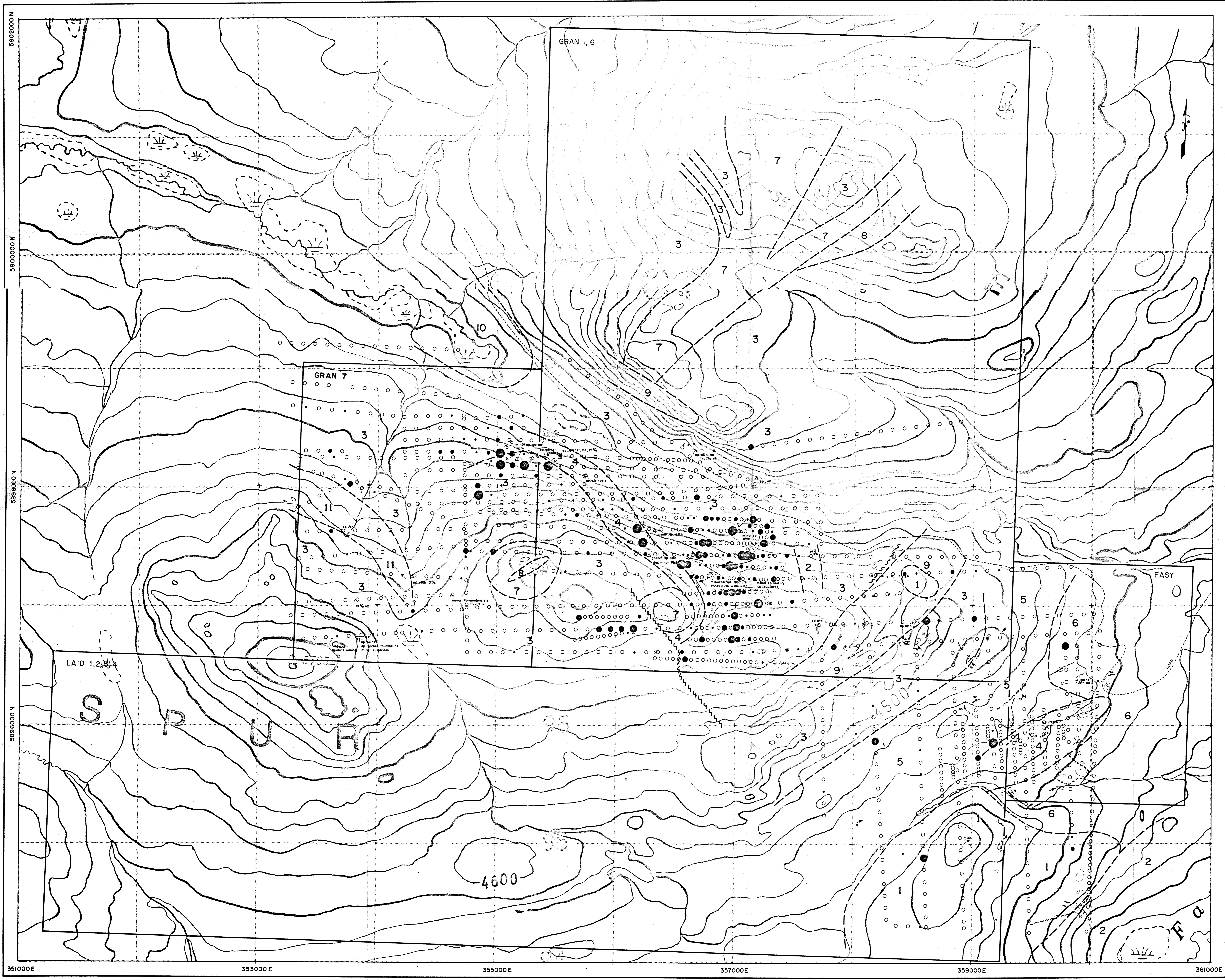
- UPPER JURASSIC / CRETACEOUS
- 11 MAGNETIC SKARN
- 10 CAPOOSE GRANODIORITE
- 9 DIORITE
- MIDDLE JURASSIC - HAZELTON GROUP
- 8 RHYOLITE - MASSIVE, fine grained, relatively unaltered
- 7 DACITIC ANDESITE FLOW BRECCIA - fragment supported, andesitic matrix
- 6 RHYOLITE BRECCIA - intrusive
- 5 RHYOLITE LAPILLI TUFF
- 4 INTERMEDIATE LAPILLI TUFF - RHYODACITE - rusty weathering < 15% Py
- 3 ANDESITE LAPILLI TUFF - maroon to olive green weathering
- 2 ARGILLITE, SILTSTONE, fossiliferous, rusty weathering in part
- TRIASSIC / LOWER JURASSIC - TAKLA GROUP
- 1 AUGITE PORPHYRY

- CONTACT: defined, assumed
- OUTCROP AREA
- OUTCROP < 10x10m
- BEDDING
- BEDDING, top direction indicated
- STRIKE/DIP OF JOINTS
- STRIKE OF VERTICAL JOINTS



**PART 2 OF 2**  
 GEOLOGICAL BRANCH  
 ASSESSMENT REPORT  
**12,668**

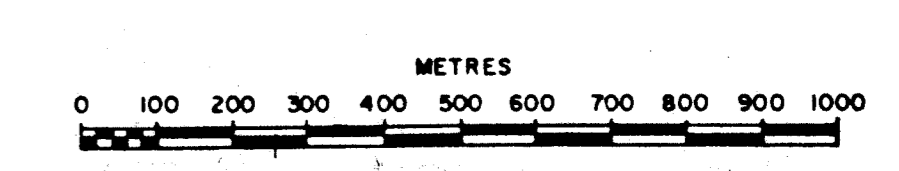
BP Minerals Limited			
GRAN AND LAID CLAIMS			
CAPOOSE LAKE B.C.			
GOLD (PPB) IN SOILS			
1982/83 DATA			
DWG NO	DATE FEB 1984	PROJECT 529	FIG 5A
REPORT NO	NTS 93F/3	SCALE 1: 10000	
TO ACCOMPANY REPORT: BPVR 83-17 B			



**LEGEND**

- UPPER JURASSIC / CRETACEOUS
- 11 MAGNETIC SKARN
- 10 CAPOOSE GRANODIORITE
- 9 DIORITE
- MIDDLE JURASSIC - HAZELTON GROUP
- 8 RHYOLITE - MASSIVE, fine grained, relatively unaltered
- 7 DACITIC ANDESITE FLOW BRECCIA - fragment supported, andesitic matrix
- 6 RHYOLITE BRECCIA - intrusive
- 5 RHYOLITE LAPILLI TUFF
- 4 INTERMEDIATE LAPILLI TUFF - RHYODACITE - rusty weathering <math>\le 15\% Py</math>
- 3 ANDESITE LAPILLI TUFF - maroon to olive green weathering
- 2 ARGILLITE, SILTSTONE, fossiliferous, rusty weathering in part
- TRIASSIC / LOWER JURASSIC - TAKLA GROUP
- 1 AUGITE PORPHYRY

- CONTACT: defined, assumed
- OUTCROP AREA
- OUTCROP <math>\le 10 \times 10 m</math>
- BEDDING
- BEDDING, top direction indicated
- STRIKE/DIP OF JOINTS
- STRIKE OF VERTICAL JOINTS



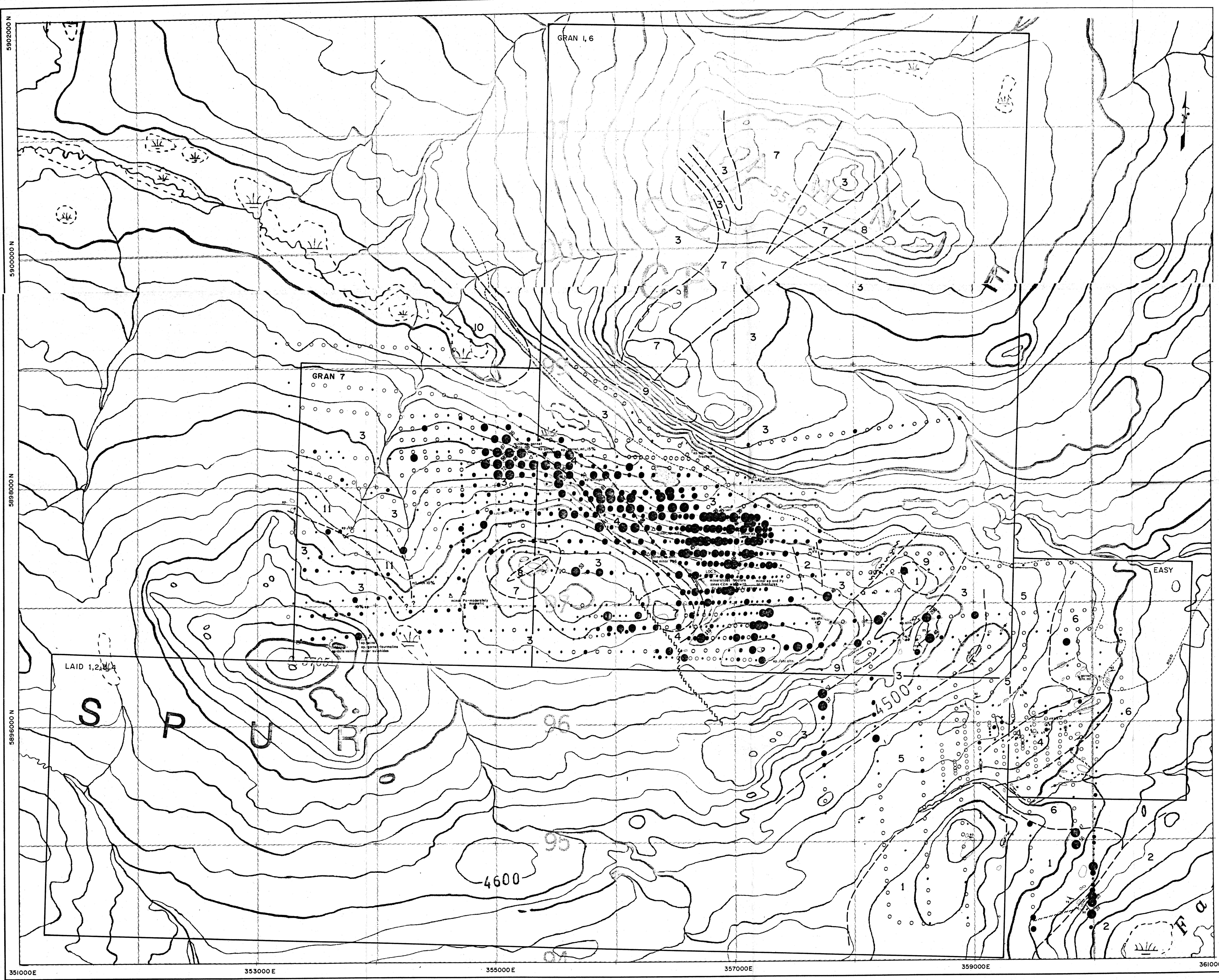
SAMPLE TYPE (S) 50  
 ROCK TYPE (R) ALL  
 SIZE (M) (M) ALL  
 SAMPLE TEXTURE (T) ALL  
 DICHROISM (D) ALL  
 LAB SIZE-FMC EXT ALL

**PART 2 OF 2**  
 GEOLOGICAL BRANCH  
 ASSESSMENT REPORT  
**12,668**  
 500 METRES

BP Minerals Limited <b>GRAN AND LAID CLAIMS</b> CAPOOSE LAKE B.C. SILVER (PPM) IN SOILS 1982/83 DATA			
Dwg. No.	DATE FEB/83	PROJECT 529	Fig. <b>5B</b>
REPORT NO.	NTS 93F/3	SCALE 1: 10000	
TO ACCOMPANY REPORT: BPVR 83-17 B			

5902000 N 5900000 N 5898000 N 5896000 N 5894000 N 5892000 N 5890000 N 5888000 N 5886000 N 5884000 N 5882000 N 5880000 N

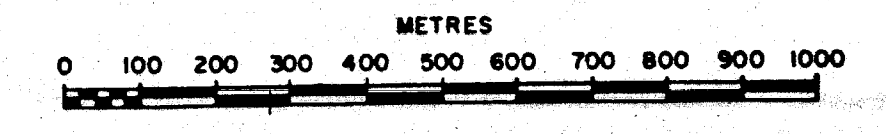
351000E 353000E 355000E 357000E 359000E 361000E



**LEGEND**

- UPPER JURASSIC / CRETACEOUS
  - 11 MAGNETIC SKARN
  - 10 CAPOOSE GRANODIORITE
  - 9 DIORITE
- MIDDLE JURASSIC - HAZELTON GROUP
  - 8 RHYOLITE - MASSIVE, fine grained, relatively unaltered
  - 7 DACITIC ANDESITE FLOW BRECCIA - fragment supported, andesitic matrix
  - 6 RHYOLITE BRECCIA - intrusive
  - 5 RHYOLITE LAPILLI TUFF
  - 4 INTERMEDIATE LAPILLI TUFF - RHYODACITE - rusty weathering ≤ 15% Py
  - 3 ANDESITE LAPILLI TUFF - maroon to olive green weathering
  - 2 ARGILLITE, SILTSTONE, fossiliferous, rusty weathering in part
- TRIASSIC / LOWER JURASSIC - TAKLA GROUP
  - 1 AUGITE PORPHYRY

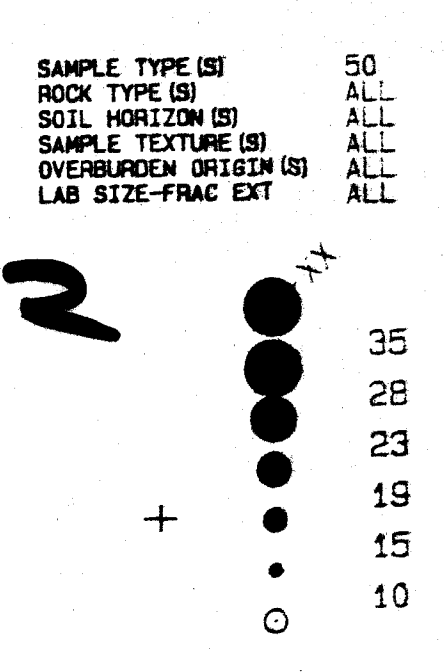
- CONTACT: defined, assumed
- OUTCROP AREA
- OUTCROP 4.0x10 m
- BEDDING
- BEDDING, top direction indicated
- STRIKE/DIP OF JOINTS
- STRIKE OF VERTICAL JOINTS

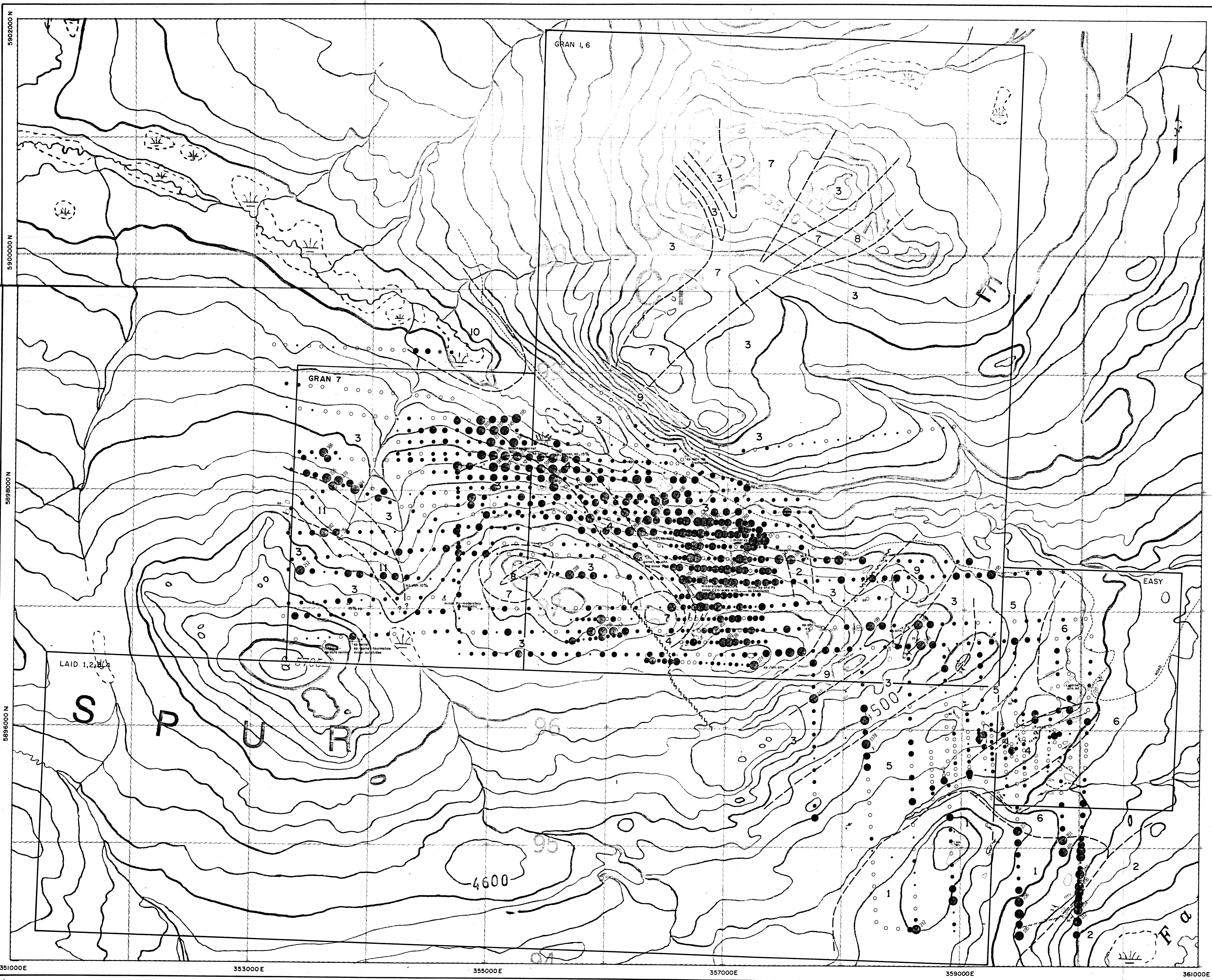


**PART 2 OF 2**  
 GEOLOGICAL BRANCH  
 ASSESSMENT REPORT  
**12,668**

500 METRES

BP Minerals Limited			
GRAN AND LAID CLAIMS			
CAPOOSE LAKE B.C.			
LEAD (PPM) IN SOILS			
1982/83 GRID			
DWG NO.	DATE FEB/83	PROJECT 529	FIG 5C
REPORT NO.	NTS 93F/3	SCALE 1: 10000	
TO ACCOMPANY REPORT: BPVR 83-17 B			

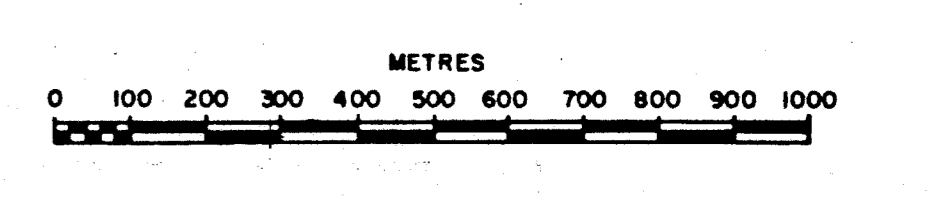




**LEGEND**

- UPPER JURASSIC / CRETACEOUS
- 11 MAGNETIC SKARN
- 10 CAPOOSE GRANODIORITE
- 9 DIORITE
- MIDDLE JURASSIC - HAZELTON GROUP
- 8 RHYOLITE - MASSIVE, fine grained, relatively unaltered
- 7 DACITIC ANDESITE FLOW BRECCIA - fragment supported, andesitic matrix
- 6 RHYOLITE BRECCIA - intrusive
- 5 RHYOLITE LAPILLI TUFF
- 4 INTERMEDIATE LAPILLI TUFF - RHYODACITE - rusty weathering  $\leq 15\% \text{ Py}$
- 3 ANDESITE LAPILLI TUFF - maroon to olive green weathering
- 2 ARGILLITE, SILTSTONE, fossiliferous, rusty weathering in part
- TRIASSIC / LOWER JURASSIC - TAKLA GROUP
- 1 AUGITE PORPHYRY

- CONTACT: defined, assumed
- OUTCROP AREA
- OUTCROP  $<10 \times 10 \text{ m}$
- BEDDING
- BEDDING, top direction indicated
- STRIKE/DIP OF JOINTS
- STRIKE OF VERTICAL JOINTS



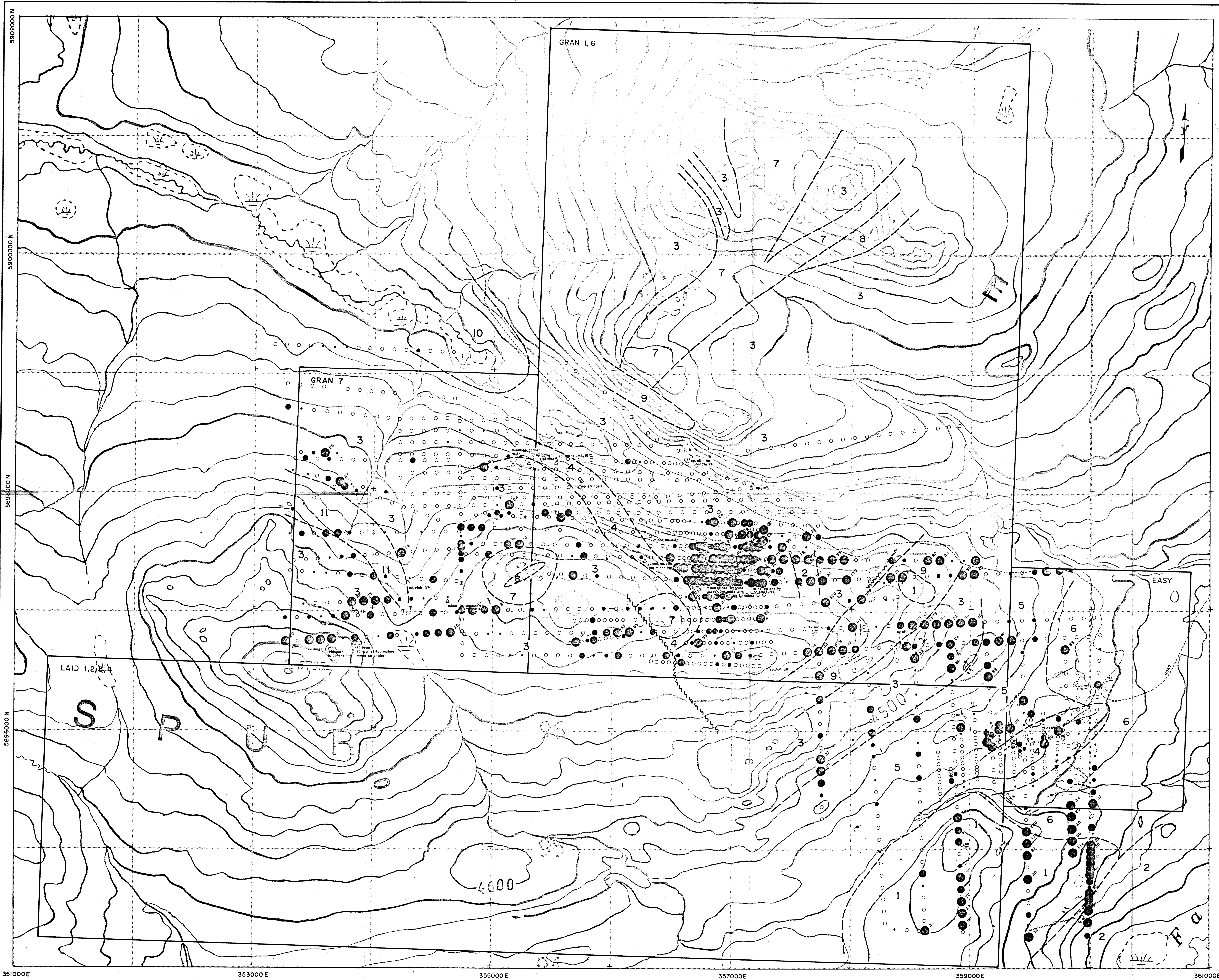
GEOLOGICAL BRANCH  
ASSESSMENT REPORT

**12,668**  
**PART 2 OF 2**

BP Minerals Limited	
GRAN AND LAID CLAIMS	
CAPOOSE LAKE B.C.	
ZINC (PPM) IN SOILS	
1982/83 GRID	
DWG NO.	DATE FEB/83 PROJECT 529
REPORT NO.	PTS 93F/3 SCALE 1: 10000
TO ACCOMPANY REPORT	BPVR 83-17B

FIG 5D

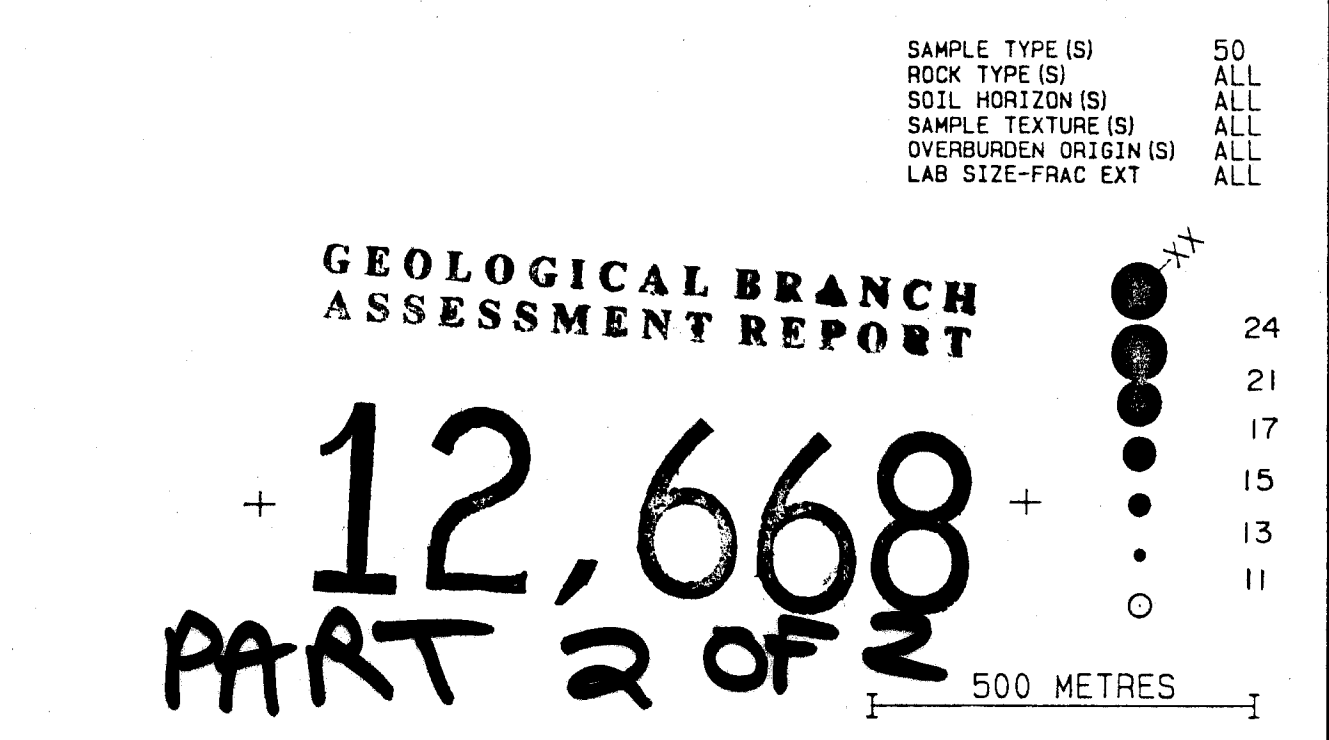
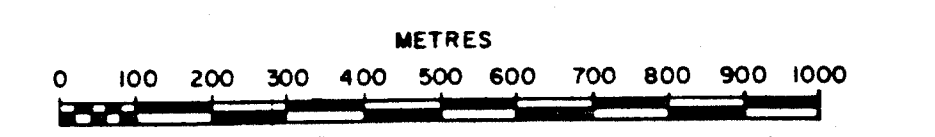




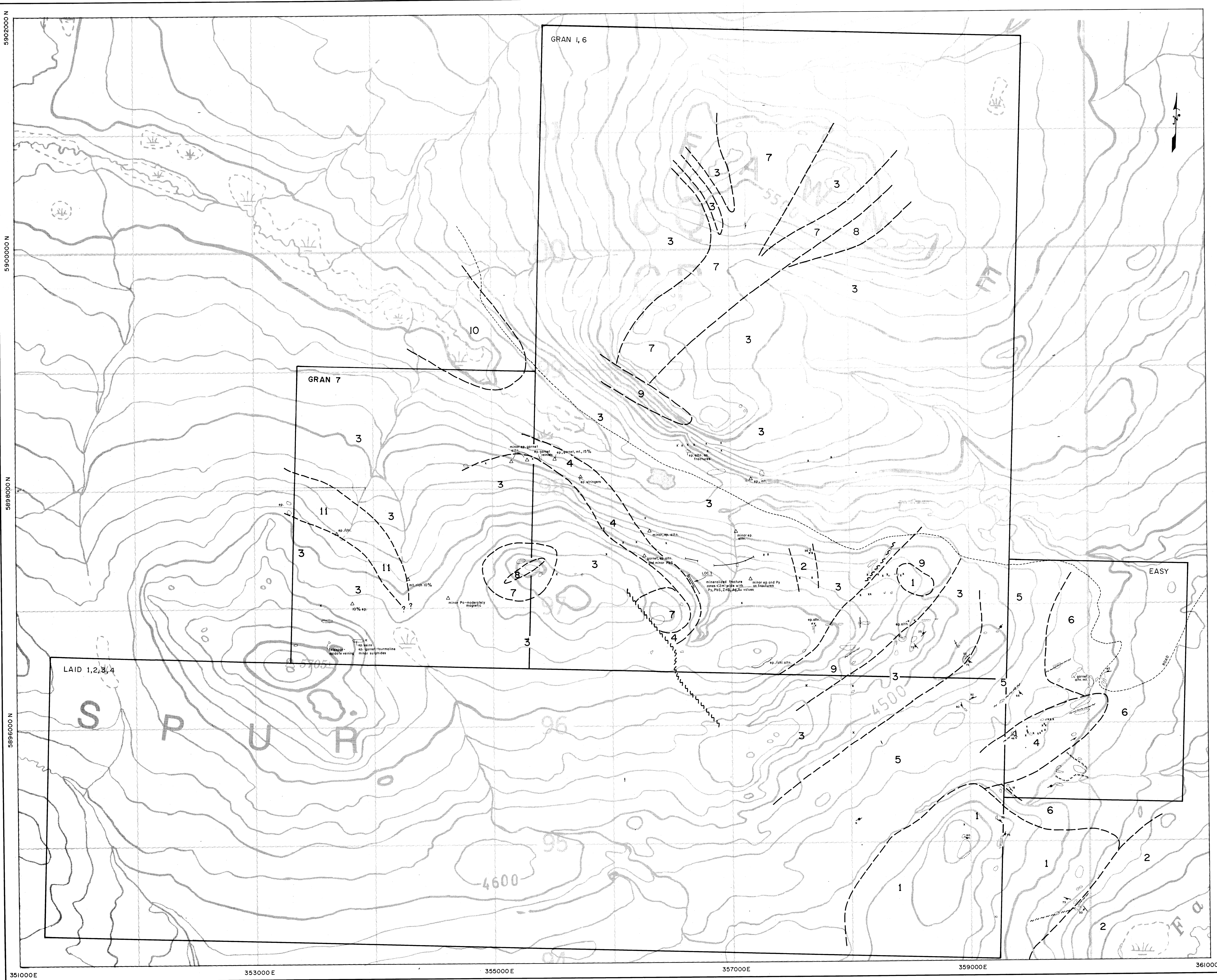
**LEGEND**

- UPPER JURASSIC / CRETACEOUS
  - 11 MAGNETIC SKARN
  - 10 CAPOOSE GRANODIORITE
  - 9 DIORITE
- MIDDLE JURASSIC - HAZELTON GROUP
  - 8 RHYOLITE - MASSIVE, fine grained, relatively unaltered
  - 7 DACITIC ANDESITE FLOW BRECCIA - fragment supported, andesitic matrix
  - 6 RHYOLITE BRECCIA - intrusive
  - 5 RHYOLITE LAPILLI TUFF
  - 4 INTERMEDIATE LAPILLI TUFF - RHYODACITE - rusty weathering <math>\le 15\% Py</math>
  - 3 ANDESITE LAPILLI TUFF - morden to olive green weathering
  - 2 ARGILLITE, SILTSTONE, fossiliferous, rusty weathering in part
- TRIASSIC / LOWER JURASSIC - TAKLA GROUP
  - 1 AUGITE PORPHYRY

- CONTACT: defined, assumed
- OUTCROP AREA
- x OUTCROP <math>\le 10 \times 10 m</math>
- BEDDING
- BEDDING, top direction indicated
- STRIKE / DIP OF JOINTS
- STRIKE OF VERTICAL JOINTS



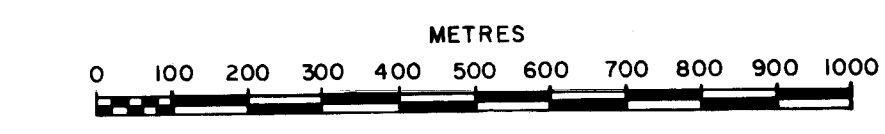
BP Minerals Limited			
GRAN AND LAID CLAIMS			
CAPOOSE LAKE B.C.			
ARSENIC (PPM) IN SOILS			
1982/83 GRID			
DWG NO	DATE FEB/83	PROJECT 529	FIG. 5E
REPORT NO	NTS 93F/3	SCALE 1: 10000	
TO ACCOMPANY REPORT	BPVR 83-17 B		



**LEGEND**

- UPPER JURASSIC / CRETACEOUS
  - 11 MAGNETIC SKARN
  - 10 CAPOOSE GRANODIORITE
  - 9 DIORITE
- MIDDLE JURASSIC - HAZELTON GROUP
  - 8 RHYOLITE - MASSIVE, fine grained, relatively unaltered
  - 7 DACITIC ANDESITE FLOW BRECCIA - fragment supported, andesitic matrix
  - 6 RHYOLITE BRECCIA - intrusive
  - 5 RHYOLITE LAPILLI TUFF
  - 4 INTERMEDIATE LAPILLI TUFF - RHYODACITE - rusty weathering  $\leq 15\% \text{ Py}$
  - 3 ANDESITE LAPILLI TUFF - maroon to olive green weathering
  - 2 ARGILLITE, SILTSTONE, fossiliferous, rusty weathering in part
- TRIASSIC / LOWER JURASSIC - TAKLA GROUP
  - 1 AUGITE PORPHYRY

- CONTACT - defined, assumed
- OUTCROP AREA
- OUTCROP  $< 10 \times 10 \text{ m}$
- BEDDING
- BEDDING, top direction indicated
- STRIKE / DIP OF JOINTS
- STRIKE OF VERTICAL JOINTS



GEOLOGICAL BRANCH  
ASSESSMENT REPORT

**12,668**  
**PART 2 OF 2**

BP Minerals Limited			
GRAN AND LAID CLAIMS			
CAPOOSE LAKE B.C.			
COMPILATION GEOLOGY MAP			
1982/83 DATA			
DWG NO.	DATE FEB/83	PROJECT 529	FIG 7
REPORT NO.	NTS 93F/3	SCALE 1: 10000	
TO ACCOMPANY REPORT: BPVR 83-17 B			