

84-#486 - 12730  
7/85

VLF-EM 16 SURVEY AND MAPING  
MOON I MINERAL CLAIM  
RECORD # 842 (7) (6 units)  
DUFFEY LAKE-CAYOOSH CREEK AREA  
LILLOOET MINING DIVISION  
N. LAT. 50°27' W. LONG. 122°16'  
92J8W

92J8W

**GEOLOGICAL BRANCH  
ASSESSMENT REPORT**

**12,730**

FOR  
BONDELL RESOURCES INC.  
C/O 4325 - 192nd STREET  
SURREY, B.C.  
V3S 4N8

or

1220 - 609 GRANVILLE STREET  
VANCOUVER, B.C.  
V7Y 1H2

by

R.H.J. SMALLWOOD

JULY 12, 1984  
SURREY, B.C.  
AMENDED  
SEPT. 30, 1984  
AMENDED  
DEC. 1, 1984

TABLE OF CONTENTS	PAGE
INTRODUCTION	1
PROPERTY-LOCATION, ACCESS	1
CLAIMS	2
WORK DONE	2
COST OF VLF-EM SURVEY AND MAPPING	3
AUTHOR	3
VLF-EM	4
VLF-EM READINGS	5A to 5N

#### MAPS

FIGURE 1	LOCATION MAP
FIGURE 2	TOPOGRAPHIC PLAN 92J8W SCALE 1:50,000
FIGURE 3	CLAIM PLAN (after 92J 8W)
FIGURE 4	REGIONAL GEOLOGY
FIGURE 5	AEROMAGNETIC
FIGURE 6	DETAIL CLAIM MAP WITH VLF-EM 16 SURVEY LINES, CLAIM BOUNDARIES
FIGURE 7	VLF-EM 16 SURVEY LINES, NORTH SOUTH 0 BASE LINE, 5 EAST LINE, 10 EAST LINE
FIGURE 8	VLF-16 SURVEY LINES, EAST AND WEST 0 BASE LINE, 1 NORTH LINE, 2 NORTH LINE 3 NORTH LINE, 4 NORTH LINE, 5 NORTH LINE, 6 NORTH LINE, 10 NORTH LINE, AND 15 NORTH LINE.

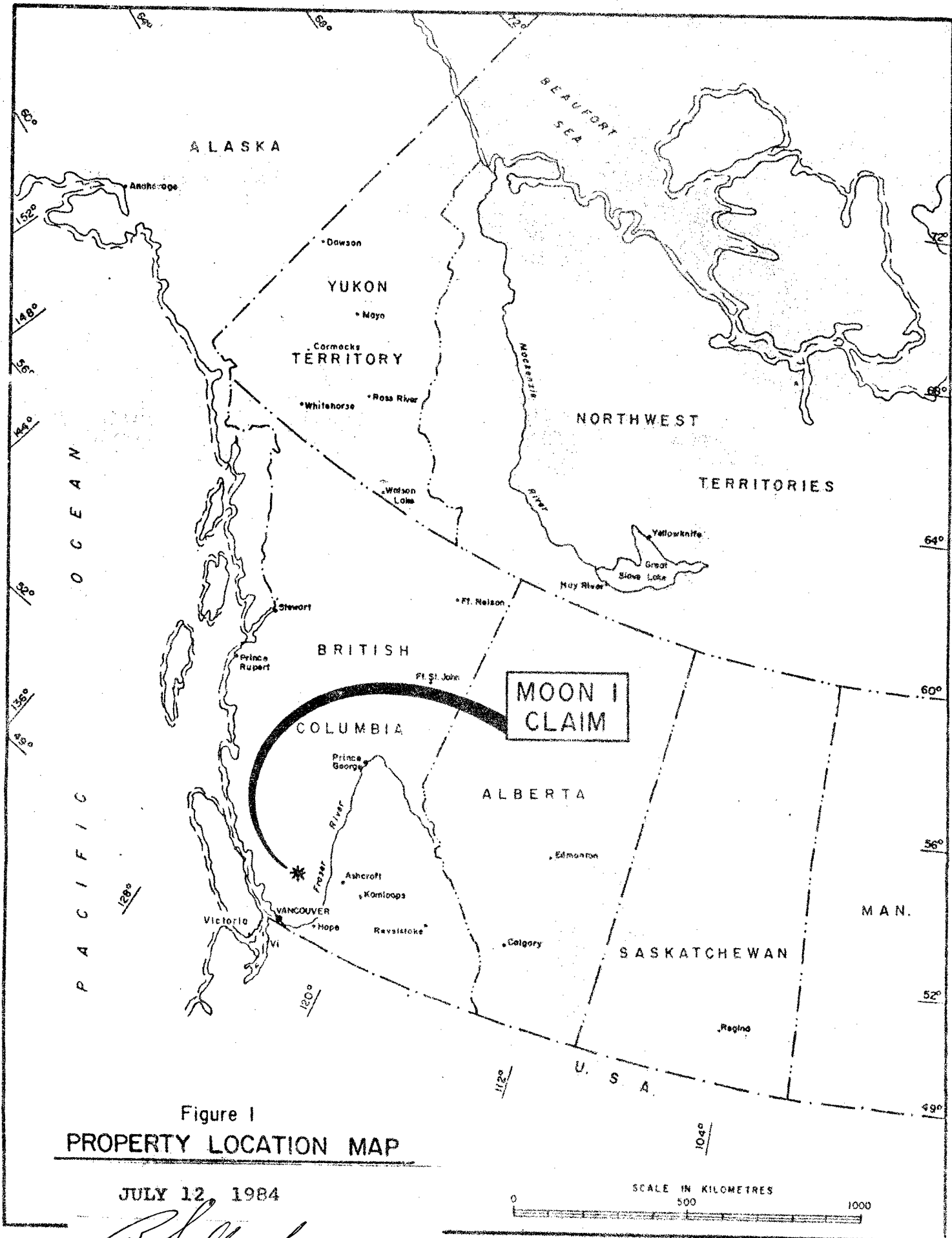
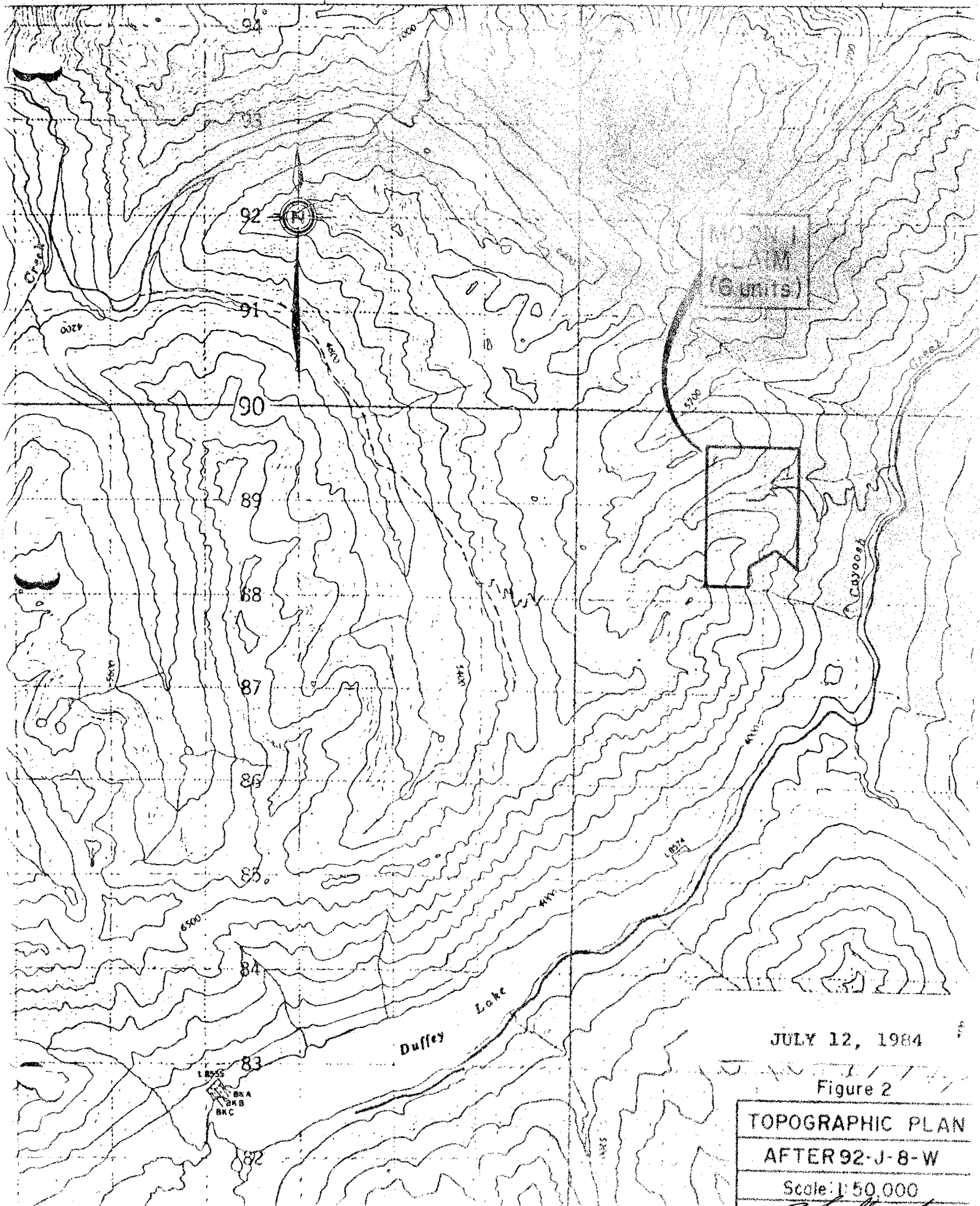


Figure 1  
PROPERTY LOCATION MAP

JULY 12, 1984

*R. Shalloway*



JULY 12, 1984

Figure 2

TOPOGRAPHIC PLAN
AFTER 92-J-8-W
Scale: 1:50,000
<i>R. Smallwood</i>

## INTRODUCTION

THIS REPORT IS PREPARED FOR BONDELL RESOURCES INC., C/O 4325 - 192nd STREET, SURREY, B.C. V3S 4N8.

THE PURPOSE OF THIS REPORT IS TO CONDUCT VLF-EM 16 SURVEY AND MAPING OF THE MOON I MINERAL CLAIMS, AND TO ASSESS THE FURTHER WORK TO BE DONE ON THE PROPERTY.

THIS REPORT IS BASED ON A STUDY OF MAPS AVAIL- ABLE TO THE WRITER AND WORK DONE ON THE PROPERTY BY MR. ROGER J. PARKES, KAMLOOPS, B.C. AND MYSELF R.H.J. SMALLWOOD.

## PROPERTY - LOCATION, ACCESS

THE MOON I MINERAL CLAIMS COMPRISES SIX UNITS. IT IS LOCATED ABOUT 190 KILOMETERS NORTH OF VANCOUVER, B.C. IN THE LILLOOET MINING DISTRICT. THE PROPERTY IS ACCESSABLE FROM THE DUFFEY LAKE ROAD. THE ROAD TO THE CLAIMS LEAVES THE DUFFEY LAKE ROAD ABOUT 5 KILOMETERS NORTH OF THE EAST END OF DUFFEY LAKE, A 4X4 VEHICLE IS NECESSARY FROM THIS POINT TO REACH THE CLAIM AREA. THE ROAD USED TO REACH THE CLAIMS IS A NEW LOGGING AND OLD MINING ROADS FOR A DISTANCE OF ABOUT 4 KILOMETERS. ELEVATION VARIES FROM ABOUT 4,800' TO 6,000' ABOVE SEA LEVEL. AN UNNAMED CREEK DRAINS THE NORTH PORTION OF THE PROPERTY EAST- WARD TO CAYOOSH CREEK. ALPINE GLACIERS PRESENT IN THE GENERAL AREA.



## CLAIMS

THE MOON I MINERAL CLAIMS CONSIST OF SIX UNITS SITUATED IN THE LILLOOET MINING DISTRICT, B.C. INFORMATION FROM THE MINING OFFICE IN VANCOUVER SHOWS:

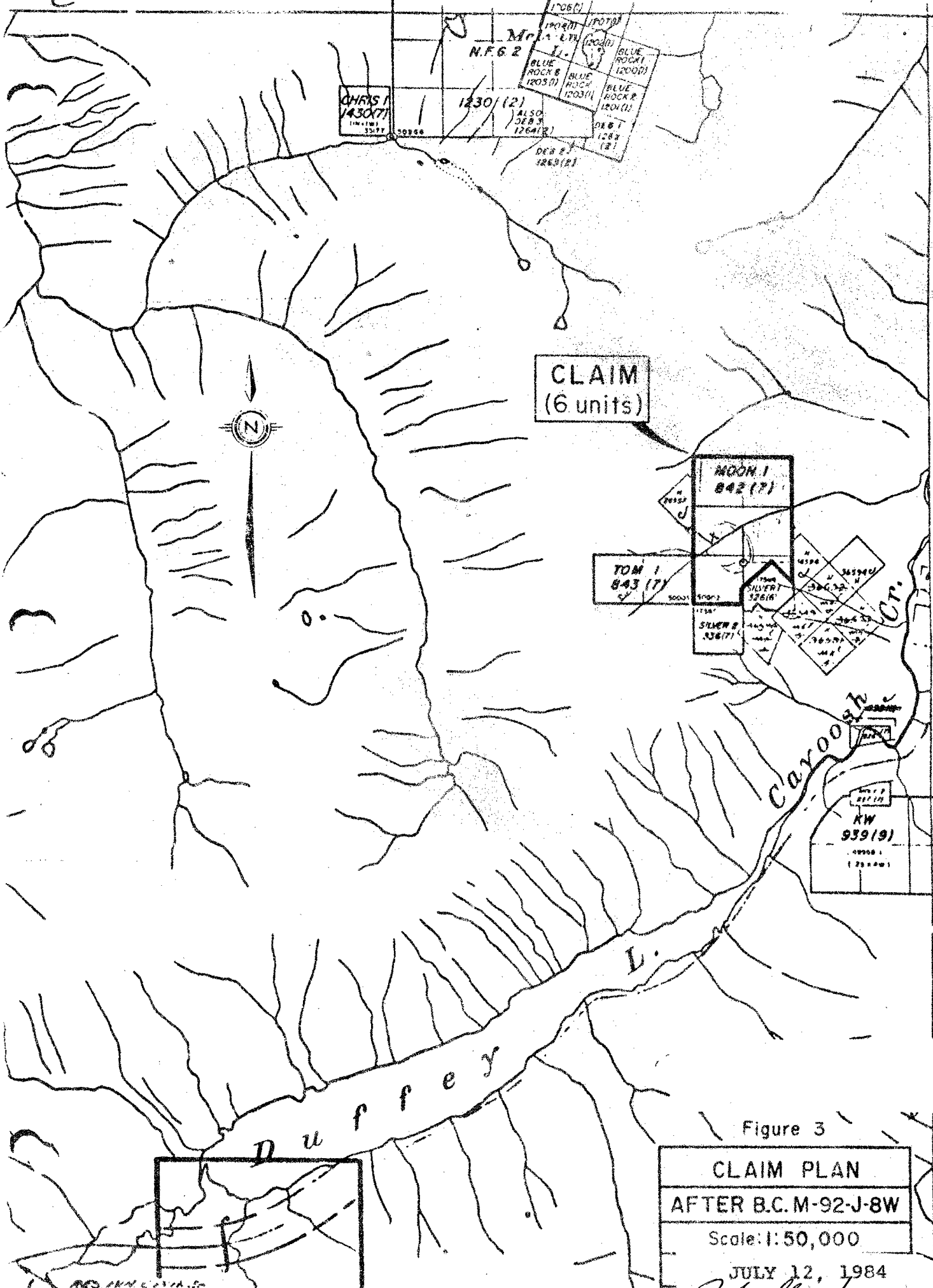
CLAIM NAME	UNITS	RECORD #	EXPIRY DATE
MOON 1	2X3=6	842(7)	JULY 20, 84

THE CLAIMS ARE SHOWN ON B.C. MINISTRY OF ENERGY, MINES AND PETROLEUM RESOURCES CLAIM MAP M92J SW.

## WORK DONE

VLF-EM 16 SURVEY WAS DONE ON A 100 METER GRID OVER THE MOON I CLAIMS AS SHOWN ON MAP FIGURE 6, RESULTING IN 826 STATION READINGS. THE SOUTH WEST AREA OF THE CLAIMS WERE COMPLETED, WITH A LARGER STEP OUT ON THE REST OF THE CLAIMS DUE TO THE LIMITED TIME TO COMPLETE WORK SEPT. 22, SEPT. 26, (5 DAYS). A RETURN TRIP WILL BE NECESSARY TO OBTAIN THE REST OF THE READINGS. AFTER ALL READINGS ARE OBTAINED THEY WILL BE SUBMITTED TO A GEOLOGIST TO HAVE THEM ANALYZED. THIS WORK WAS DONE BY ROGER J. PARKES, KAMLOOPS AND ONE HELPER, R.H. SMALLWOOD (THE AUTHOR).

*R.H. Smallwood*



6

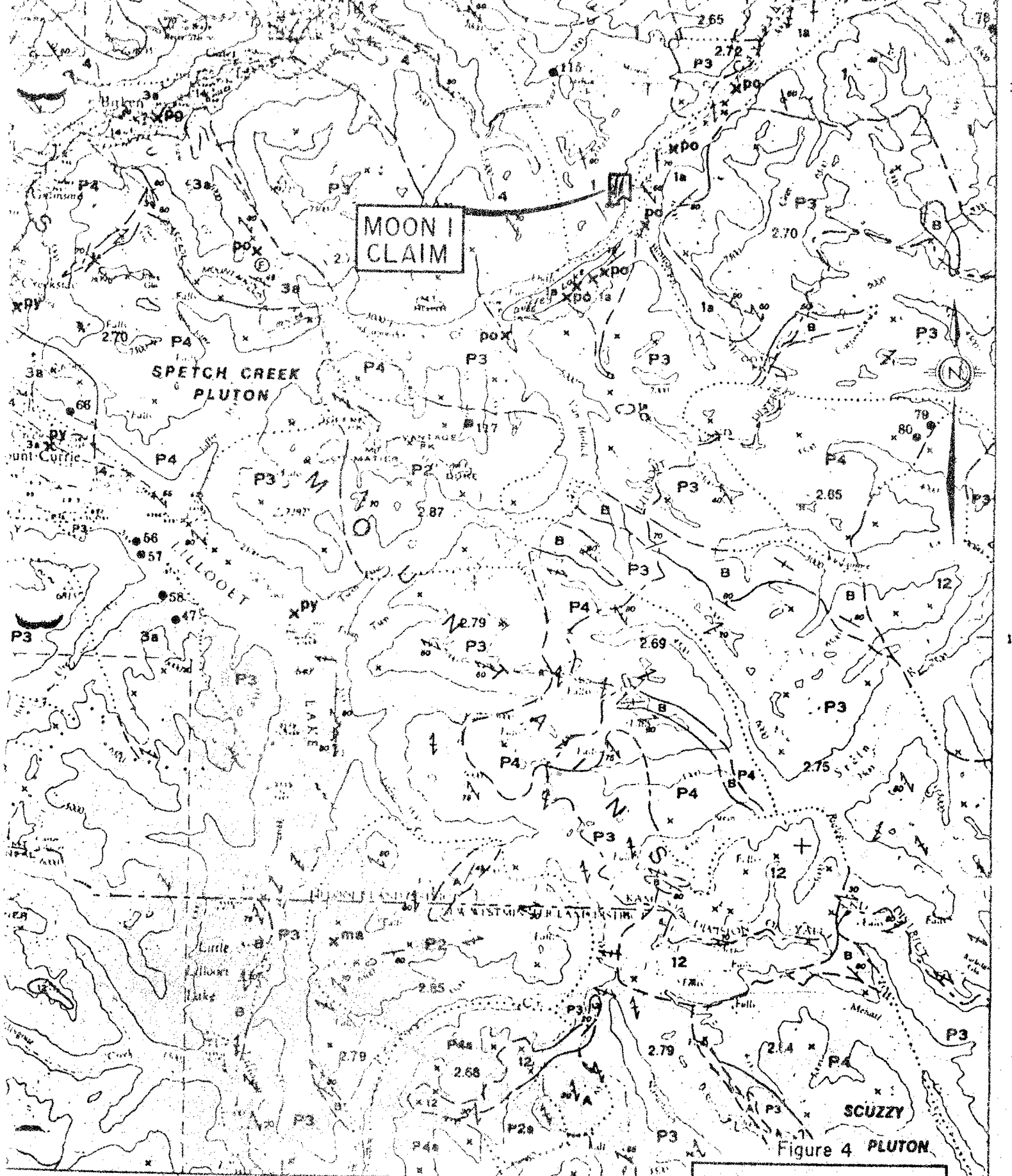
5

4

Figure 3

CLAIM PLAN
AFTER B.C.M-92-J-8W
Scale: 1:50,000
JULY 12, 1984
<i>R. Smallwood</i>





MAP 13-1973  
PAPER 73-17

REGIONAL GEOLOGY  
AFTER G.S.C.  
MAP 13-1973  
Scale 1:50,000

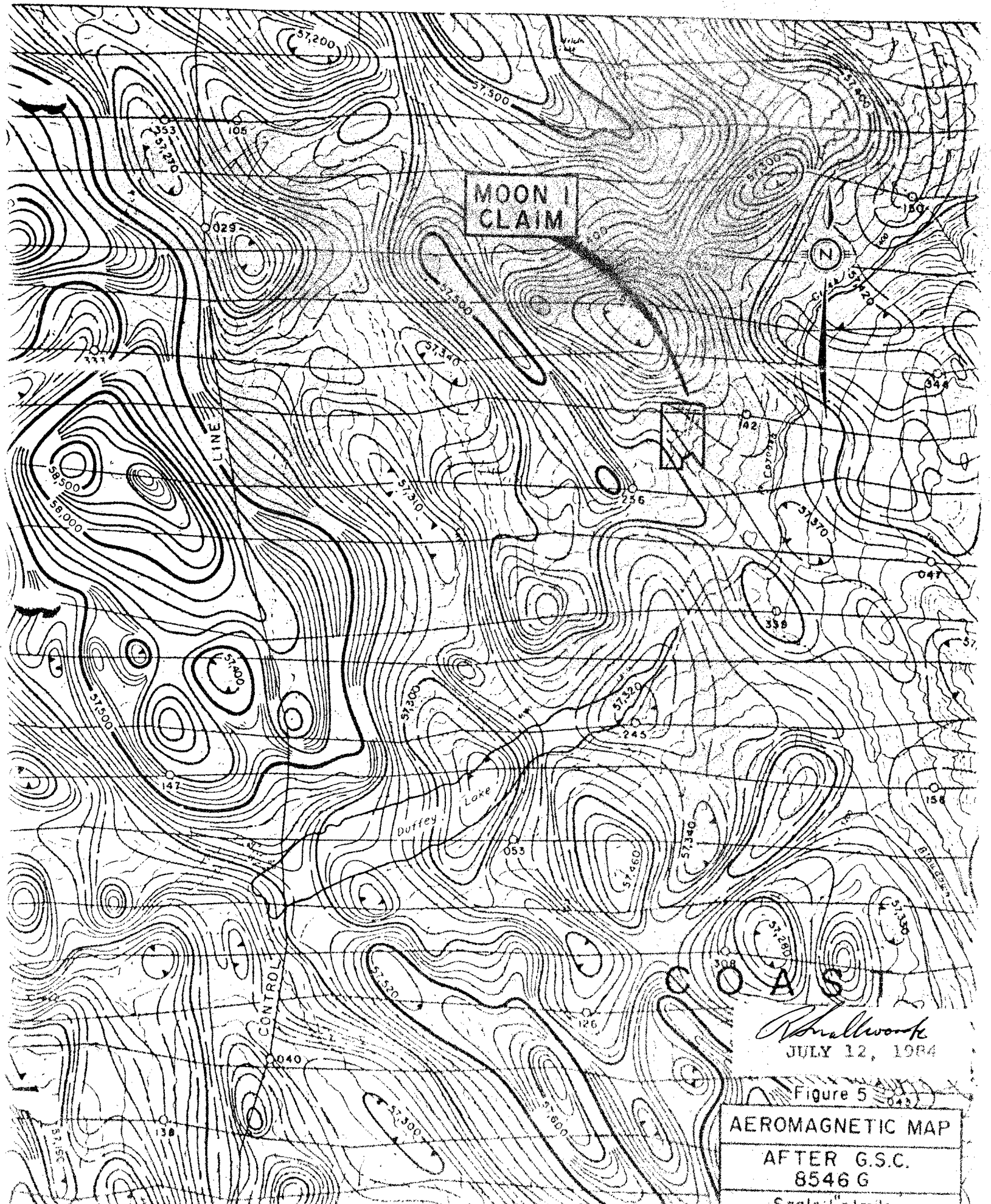
July 12, 1984  
R. Swallow



F

20'

8547 G "Shofath"



MOON CLAIM

N

LINE CONTROL

Duffey Lake

COAST

*Shofath*  
JULY 12, 1984

Figure 5

AEROMAGNETIC MAP  
 AFTER G.S.C.  
 8546 G  
 Scale 1" = 1 mile

## COSTS OF THE VLF-EM 16 WORK

RE: VLF-EM 16 READINGS AQUIRED FOR 826  
STATIONS ON THE MOON I PROPERTY AND THE  
MAPPING INFORMATION REQUIRED.

FLAGING, FILM, MAPS, GAS, MEALS AND  
LODGING.

\$ 309.16

ONE MAN RODGER J. PARKES OF CUSTOM MINING  
KAMLOOPS, 5 DAYS, RENTAL OF VLF-EM 16,  
INSURANCE AND DELIVERY OF SAME, RENTAL  
OF 4X4

\$ 1,460.00

ONE HELPER R.H. SMALLWOOD (R&R SERVICES)

5 DAYS TIMES \$150.00 PER DAY

\$ 750.00

TOTAL CHARGES

\$ 2,519.16

## AUTHOR

I RONALD HARRY JOSEPH SMALLWOOD AM THE  
HOLDER OF FREE MINING LICENCE 267853/1984,  
251582/ 1983, CURRANT LICENCE VALID TILL  
DEC. 31, 1984. I HAVE BEEN A FREE MINER  
FOR APPROX 10 YEARS. I AM A DIRECTOR OF  
BONDELL RESOURCES INC. I HAVE COMPLETED  
NITE SCHOOL GEOLOGY COURSES AND HAVE  
CONDUCTED SOIL SAMPLING, STACKING AND  
ASSISTED IN VLF-EM 16 READINGS BEFORE  
RONALD SMALLWOOD JULY 12, 1984.

*Ronald Smallwood*


VLF-EM 16 READINGS WERE TAKEN USING THE SEATTLE AND CUTLER STATIONS, THREE LINE WERE DONE ON NORTH - SOUTH LINE AND 10 LINES WERE DONE ON EAST-WEST BASIS. ALL RECORDS WERE KEPT AS TO LAND MARKS FOR DETAILED MAPING.

RESULTS OF THIS WORK HAS NOT BEEN ANALIZED AS OF YET BUT WILL BE WHEN THE REST OF THE CLAIM AREA IS DONE ON THE SAME 100 METER GRID. VLF-EM 16 READINGS WER TAKEN EVERY 15 METERS.

A handwritten signature in cursive script, likely reading "R. Sullivan", is located at the bottom right of the page.

## MOON I (6 UNITS)

<u>"0" East Line</u>					
<u>Station</u>	<u>IN</u>	<u>QUAD</u>	<u>STATION</u>	<u>IN</u>	<u>QUAD</u>
0+00N	-25	- 8	5+10N	+ 8	+ 2
15	-27	- 7	25	+ 5	- 2
30	-28	- 2	40	+ 4	- 5
45	-20	+ 1	55	+ 6	- 3
60	-17	+ 2	70	+ 4	0
75	-15	0	85	+ 7	- 5
90	-10	+ 3			
1+05N	- 7	- 8	6+00N	+ 7	- 1
20	-10	+ 5	15	+ 7	- 4
35	-10	+ 5	30	+11	- 1
50	0	+ 2	45	+11	- 1
65	- 6	+ 3	60	+10	0
80	-12	- 4	75	+14	- 1
95	-10	- 4	90	+15	0
2+10N	- 5	- 2	7+05N	+15	+ 3
25	-15	- 8	20	+18	+ 3
40	-18	- 8	35	+19	+ 5
55	-15	- 5	50	+20	+ 8
70	-12	- 1	65	+18	+ 3
85	- 7	- 1	80	+25	+ 9
			95	+35	+12
3+00N	- 4	- 8	8+10N	+41	+ 9
15	-10	- 8	25	+40	+ 8
30	- 5	- 1	40	+35	+12
45	0	- 2	55	+25	+ 6
60	+ 5	0	70	+17	+ 6
75	+ 6	+ 6	85	+10	+ 4
90	+12	+10			
4+05N	+ 3	- 2	9+00N	+ 5	+ 2
20	+ 4	- 2	15	+ 5	+ 5
35	+ 7	- 3	30	+ 7	+ 3
50	+ 4	- 5	45	+ 5	+ 8
65	+ 5	+ 2	60	+ 4	+10
80	+ 7	- 4	75	+ 5	+ 4
95	+ 7	- 1	90	+ 5	+ 8



			"5" East Line		5B
10+05N	+ 2	+10	15+00N	+60	+ 8
20	- 3	+ 7	15	+50	- 2
35	- 2	+ 2	30	+45	0
50	- 3	- 5	45	+40	+ 3
65	+ 8	- 5	60	+37	- 3
80	+ 3	- 4	75	+41	- 2
95	0	- 2	90	+40	+ 8
11+10N	- 2	- 2	14+85N	+60	+10
25	- 6	- 8	70	+62	+12
40	- 2	0	55	+64	+15
55	0	- 5	40	+62	+17
70	+ 2	+ 2	25	+58	+ 9
85	+ 2	- 3	10	+48	+ 7
12+00N	+ 2	+ 4	13+95N	+44	+ 5
15	0	+ 4	80	+45	+ 6
30	+ 7	+ 5	65	+48	+ 8
45	+ 6	+ 6	50	+47	+12
60	+ 4	+ 5	35	+42	+12
75	+12	+ 8	20	+40	+10
90	+14	+ 7	05	+40	+ 6
13+05N	+13	+ 6	12+90N	+30	+ 7
20	+12	+ 2	75	+27	+14
35	+15	+ 5	60	+27	+ 2
50	+16	+ 6	45	+26	+ 8
65	+16	+ 7	30	+25	+ 2
80	+20	+ 6	15	+20	+ 6
95	+24	+ 6	00	+20	+ 6
14+10N	+20	+ 4	11+85N	+17	+ 5
25	+20	- 2	70	+15	+ 4
40	+18	- 3	55	+15	+12
55	+18	- 2	40	+10	+10
70	+18	- 1	25	+ 5	+ 4
85	+16	- 5	10	+12	+ 8
15+00N	+14	+ 4	10+95N	+ 6	+ 8
15	+20	+ 6	80	+12	+ 8
30	+23	- 2	65	+ 5	+ 5
45	+20	0	50	+ 7	0
60	+18	- 4	35	+ 4	- 6
75	+13	0	20	- 7	- 2
90	+16	0	05	- 8	+ 4

*R. J. [Signature]*

9+90N	-12	- 5	3+90N	-10	-10
75	- 8	0	75	- 8	-10
60	-15	0	60	-15	-14
45	-10	- 3	45	-22	-20
30	- 7	- 7	30	-20	-14
15	-17	- 6	15	-20	-16
00	-25	- 8	00	-16	-16
8+85N	-30	- 8	2+85N	-22	-11
70	-40	-18	70	-20	-10
55	-30	-14	55	-18	-16
40	-32	-12	40	-18	-12
25	-24	-15	25	-20	-12
10	-22	-12	10	-22	-10
7+95N	-24	-14	1+95N	-25	-12
80	-30	-14	80	-25	-17
65	-25	-16	65	-22	-12
50	-21	-18	50	-25	-11
35	-15	-20	35	-25	-11
20	-10	-22	20	-30	-14
05	- 8	-22	05	-32	-18
6+90N	0	-20	0+90N	-32	-12
75	0	-20	75	-42	-22
60	- 7	-20	60	-35	-17
45	- 8	-14	45	-30	-27
30	-11	-20	30	-30	-30
15	-24	-15	15	-35	-28
00	-22	-12	00	-35	-24
5+85N	-18	-14			
70	-14	-16			
55	-15	-17			
40	-20	-18			
25	- 6	- 8			
10	-15	- 8			
4+95N	-17	- 7			
80	-12	-12			
65	-10	- 8			
50	- 6	-14			
35	-10	- 8			
20	-12	-12			
05	-10	-14			

*R. H. Wood*

"0" South Line					
6+05E	+12	+20	0+15	-28	- 8
00	+15	+17	30	-28	- 8
			45	-32	-10
5+95E	+16	+12	60	-38	- 9
70	+27	+16	75	-38	- 8
55	+27	+18	90	-42	-10
40	+22	+12			
25	+22	+12	0+05	-40	- 5
10	+25	+12 -			
4+95E	+22	+12			
80	+24	+12			
65	+20	+14			
50	+20	+14			
35	+22	+12			
20	+12	+12			
05	+13	+11			
3+90E	+10	+11			
75	+ 6	+11			
60	+ 5	+10			
45	+ 9	+10			
30	+10	+10			
15	+ 8	+ 4			
00	+11	0			
2+85E	+15	+ 4			
70	+16	+ 3			
55	+15	+ 1 -			
40	+11	- 2			
25	+10	0			
10	+ 7	- 3			
1+95E	+ 1	- 5			
80	- 2	- 7			
65	- 4	- 6			
50	- 5	- 5			
35	- 9	0			
20	-10	- 2			
05	-10	0			
0+90E	-15	+ 2			
75	-20	- 3			
60	-	-			
45	-20	0			
30	-18	- 3			
15	-22	- 6			
00	-25	- 6 -			

*R. H. Wood*

"5" North Line					
1+05	-18	- 2	5+10	+15	+ 2
90	-18	- 3	25	+25	+ 2
75	-20	- 4	40	+25	0
60	-25	- 4	55	+25	0
45	-28	- 2	70	+30	+ 2
30	-30	- 1	85	+32	+ 5
15	-33	- 2			
0+00	-36	- 4	6+00	+30	+ 7
15	-25	0			
30	-23	0			
45	-23	0			
60	-23	0			
75	-22	- 2			
90	-25	- 2			
1+05	-26	- 3			
20	-21	- 2			
35	-25	- 5			
50	-34	-10			
65	-30	-10			
80	-26	-10			
95	-25	- 9			
2+10	-28	-12			
25	-18	- 9			
40	-18	- 9			
55	-15	- 8			
70	-12	- 5			
85	- 8	- 2			
3+00	- 5	- 2			
15	- 3	- 1			
30	- 0	- 0			
45	- 3	+ 2			
60	- 3	+ 1			
75	- 6	- 2			
90	- 7	- 2			
4+05	- 9	- 3			
20	- 5	- 3			
35	- 1	- 4			
50	- 0	- 0			
65	+ 2	0			
80	+ 7	0			
95	+ 6	+ 1			

*R. S. Wood*



"1" South Line					
1+05W	-28	-10	5+10W	+25	+20
90	-20	- 2	25	+22	+20
75	-15	- 2	40	+18	+18
60	-12	- 2	55	+15	+16
45	-10	- 7	70	+10	+16
30	- 8	- 5	85	+ 0	+10
15	-10	- 4			
0+00W	-17	-10			
15	-22	-12			
30	-25	-13			
45	-25	-10			
60	-27	-12			
75	-22	-12			
90	-20	-12			
1+05W	-17	-11			
20	-12	-12			
35	- 8	-10			
50	- 5	-10			
65	- 2	-10			
80	+ 3	- 5			
95	+ 7	- 5			
2+10W	+11	- 2			
25	+17	- 2			
40	+20	+ 5			
55	+17	+ 8			
85	+ 7	+ 8			
3+00W	+ 5	+ 8			
15	+ 5	+10			
30	+12	+14			
45	+15	+16			
60	+18	+20			
75	+20	+20			
90	+25	+22			
4+05W	+28	+24			
20	+31	+25			
35	+35	+28			
50	+35	+26			
65	+35	+24			
80	+32	+22			
95	+27	+22			

*R. H. Llewellyn*

1+00 North					
6+00W	+34	+22	0+15W	-22	- 6
85	+34	+22	30	-22	- 4
70	+32	+20	45	-22	- 3
55	+35	+20	60	-24	- 3
40	+32	+16	75	-28	- 4
25	+34	+14	90	-30	- 4
5+10W	+34	+13	1+05W	-28	0
4+95W	-	-			
80	-	-			
65	-	-			
50	+37	+15			
35	+35	+12			
20	+25	+ 8			
05	+22	+ 6			
3+90W	+15	+ 4			
75	+12	+ 3			
60	+10	+ 3			
45	+ 4	+ 2			
30	- 0	+ 2			
15	+ 3	+ 5			
00	+ 3	+ 5			
2+85W	- 2	- 0			
70	- 3	- 3			
55	- 0	- 0			
40	+ 9	+ 5			
25	+10	+ 2			
10	+ 8	+ 2			
1+95W	- 1	- 6			
80	- 3	- 9			
65	- 5	- 8			
50	- 4	- 8			
35	- 3	- 8			
20	+ 2	- 6			
05	- 0	- 0			
0+90W	- 6	- 4			
75	- 5	- 4			
60	- 5	- 5			
45	- 5	- 0			
30	- 5	- 0			
15	-10	- 3			
00	-16	- 2			

*R. H. Wood*

2+00 North					
6+00E	+28	+24	0+15W	-13	- 2
85	+28	+22	30	-12	- 2
70	+30	+22	45	-17	- 2
55	+27	+22	60	-20	- 3
40	+26	+18	75	-20	- 0
25	+30	+17	90	-22	- 0
5+10	+25	+15 -			
4+95E	+18	+ 8	1+05W	-25	- 2
80	+20	+ 6			
65	+30	+10			
50	+18	+ 4			
35	+14	+ 5			
20	+ 6	+ 4			
05	+ 3	+ 1			
3+90E	+ 3	+ 2			
75	+ 0	+ 2			
60	+ 3	+ 4			
45	- 3	+ 4			
30	- 5	+ 2			
15	-10	0			
00	-20	- 6			
2+85E	-20	- 5			
70	-15	- 4			
55	-12	- 3 -			
40	-10	- 3			
25	-10	- 3			
10	- 4	- 2			
1+95E	- 3	- 3			
80	- 4	- 2			
65	- 7	- 2			
50	- 9	- 3			
35	-10	- 5			
20	-12	- 6			
05	-14	- 7			
0+90E	-12	- 6			
75	-13	- 6			
60	-13	- 6			
45	-12	- 6			
30	-12	- 2			
15	-12	- 2			
00	-13	- 4 -			

*R. H. Wood*

3+00 North					
1+05W	-23	- 4	5+00E	+ 8	+ 6
				+ 8	+10
0+90W	-18	- 0	25	+12	+12
75	-15	- 0	40	+14	+14
60	-19	- 0	55	+15	+16
45	-11	- 1	70	+22	+20
30	- 7	- 0	85	+27	+22
15	- 5	+ 3			
00	- 4	+ 5	6+00E	+30	+34
1+15E	-11	+ 4			
30	- 8	+ 4			
45	-10	- 0			
60	- 7	- 0			
75	- 7	+ 1			
90	- 8	+ 2			
1+05E	- 9	- 0			
20	- 9	- 0			
35	- 7	- 0			
50	-10	- 0			
65	- 9	- 0			
80	- 8	- 0			
95	- 8	- 0			
2+10E	- 8	- 0			
25	- 7	- 0			
40	- 7	- 0			
55	-10	- 1			
70	-10	- 2			
85	-12	- 2			
3+00E	- 7	- 0			
15	- 5	- 0			
30	- 0	- 0			
45	+ 2	+ 2			
60	+ 5	+ 3			
75	+ 5	- 0			
90	+ 3	- 3			
4+05E	+ 1	- 3			
20	0	- 4			
35	+ 2	- 4			
50	+ 3	- 4			
65	+ 4	+ 2			
80	+ 6	+ 3			
95	+ 3	+ 3			

*R. S. ...*

<u>STATION</u>	<u>IN</u>	<u>QUAD</u>	<u>STATION</u>	<u>IN</u>	<u>QUAD</u>
4 North					
6+00E	+37	+25	0+15W	-15	+ 4
85	+27	+22	30	-12	+ 3
70	+45	+32	45	-10	+ 2
55	+25	+16	60	- 8	+ 2
40	+22	+15	75	- 8	+ 2
	+13	+13	90	- 9	- 0
25	+15	+13			
5+10E	+11	+11	1+05W	-10	- 2
4+95E	+12	+12			
80	+ 4	+ 8			
65	- 0	+ 3			
50	- 3	- 0			
35	- 3	- 0			
20	- 4	- 2			
05	- 2	- 2			
3+90E	- 5	- 5			
75	- 5	- 5			
60	- 6	- 4			
45	- 5	- 5			
30	- 3	- 4			
15	- 2	- 4			
00	- 2	- 4			
2+85E	- 3	- 4			
70	- 6	- 4			
55	- 5	- 5			
40	- 6	- 4			
25	- 6	- 4			
10	- 8	- 4			
1+95E	-11	- 6			
80	-11	- 6			
65	- 9	- 2			
50	-15	- 4			
35	-10	- 2			
20	-15	- 3			
05	-14	- 2			
0+90E	-12	- 2			
75	-13	- 0			
60	-17	- 0			
45	-20	- 0			
30	-17	+ 1			
15	-17	+ 1			
00	-15	+ 1			

*R. Sullivan*

6 North					
1+05W	-19	- 0	5+10W	+10	- 5
90	-24	- 1	25	+15	- 4
75	-29	- 2	40	+19	- 5
60	-30	- 3	55	+25	- 2
45	-33	- 2	70	+24	- 2
30	-32	- 0	85	+25	- 0
15	-38	- 2			
0+00W	-40	- 6	6+00W	+22	- 0
15	-40	- 5			
30	-42	- 4			
45	-42	- 5			
60	-42	- 5			
75	-40	- 3			
90	-36	- 3			
1+05W	-38	- 5			
20	-35	- 5			
35	-32	- 4			
50	-30	- 4			
65	-30	- 8			
80	-27	- 6			
95	-30	- 8			
2+10W	-40	-15			
25	-22	- 6			
40	-20	- 5			
55	-18	- 5			
70	-18	- 9			
85	-16	- 6			
3+00W	-15	-10			
15	-18	-11			
30	-18	-10			
45	-20	-10			
60	-20	- 8			
75	-17	-10			
90	-14	- 8			
4+05W	-12	- 8			
20	- 9	- 6			
35	- 7	- 7			
50	- 6	- 9			
65	- 0	- 6			
80	+ 5	- 6			
95	+ 7	- 5			

*R. J. Wood*

10 North Line					
1+05W			5+10	-37	- 0
90	-43	+ 4	25	-40	- 4 -
75	-46	+14	40	-40	- 4
60	-45	+12	55	-38	- 6
45	-43	+10	70	-36	- 6
30	-43	+10	85	-36	- 6
15	-45	+ 6			
0+00	-50	+ 5	6+00	-36	- 6
			15	-32	-10
15E	-52	0	30	-30	+ 2
30	-52	- 0	45	-32	- 0
45	-55	- 2	60	-22	+ 3
60	-65	- 2	75	-20	+ 3
75	-60	- 4	90	-15	+ 3
90	-65	- 5			
			7+05	-18	+ 3
1+05	-60	- 4	20	- 9	+ 7
20	-58	- 3	35	-10	+ 5
35	-55	- 3	50	- 6	+ 8
50	-55	- 3	65	- 6	+ 7
65	-53	- 2	80	+ 2	+10
80	-50	- 1	95	- 4	+ 8
95	-45	+ 2			
			8+10	- 0	+ 8
2+10	-45	+ 3	25	- 2	+ 6
25	-45	+ 3	40	+ 2	+ 7
40	-45	+ 3	55	+ 5	+ 8
55	-38	+ 4 -	70	+ 6	+ 6
70	-38	+ 3	85	+ 8	+10
85	-40	+ 4			
			9+00	+13	+12
3+00	-37	+ 5	15	+16	+13
15	-35	+10	30	+20	+14
30	-40	+ 6	45	+10	+ 8
45	-40	+ 6	60	+10	+ 6
60	-40	+ 6	75	+10	+ 6
75	-40	+ 4	90	+10	+ 5
90	-42	+ 4			
			10+05	+10	+ 4 .
4+05	-42	+ 3	20	+14	+ 7
20	-40	+ 3	35	+17	+ 5
35	-32	+ 8	50	+21	+ 6
50	-32	+ 6	65	+22	+10
65	-30	- 6	80	+22	+ 5
80	-34	+ 2	95	+20	+ 3
95	-35	- 0			
			11+10	+20	+ 4

*R. H. Woods*

10 East Line					
8+85	-20	-18	14+10	+27	-16
			25	+28	-18
9+00	-16	-22	40	+35	-15
15	-20	-24	55	+37	-14
30	-20	-24	70	+40	-16
45	-20	-22	85	+40	-16
60	-19	-19			
75	-15	-20	15+00	+35	-14
90	-14	-18	15	+30	-12
			30	+32	-14
10+05	-22	-20	45	+36	-10
20	-14	-22	60	+33	- 8
35	- 5	-20	75	+38	-14
50	- 3	-23	90	+43	-13
65	- 2	-18			
80	- 3	-15	16+05	+55	-10
95	- 0	-12	20	+60	- 8
			35	+65	- 0
11+10	- 2	-14	50	+75	- 2
25	- 5	-16	65	+65	- 5
40	- 3	-20	80	+65	- 0
55	- 3	-20			
70	- 0	-24			
85	- 0	-20			
12+00	- 0	-20			
15	- 2	-23			
30	+ 2	-19			
45	+ 5	-20			
60	+10	-15			
75	+12	-17			
90	+18	-20			
13+05	+14	-16			
20	+20	-16			
35	+20	-14			
50	+22	-16			
65	+22	-16			
80	+23	-16			
95	+26	-16			

*R. H. Wood*



15 North Line					
11+10	- 5	-10	4+95	-27	-10
95	- 5	-10	80	-25	- 6
80	-10	-12	65	-24	- 6
65	-13	-13	50	-25	- 8
50	-16	-16	35	-25	- 8
35	-20	-16	20	-25	-10
20	-30	-17	05	-22	- 3
10+05	-30	-12			
			3+90	-20	- 4
9+90	-22	-12	75	-20	- 0
75	-20	-12	60	-19	- 0
60	-18	-12	45	-19	- 0
45	-17	-10	30	-20	- 2
30	-17	-10	15	-18	- 1
15	-10	-10	00	-15	- 0
00	-10	- 9			
			2+85	-13	+ 2
8+85	- 8	- 8	70	-13	+ 2
70	- 7	- 8	55	-11	+ 5
55	- 2	- 6	40	- 7	+ 8
40	+ 2	- 4	25	- 7	+10
25	+ 5	- 5	10	- 8	+10
10	+ 3	- 6			
			1+95	-11	+ 9
7+95	- 5	- 6	80	-16	+ 7
80	- 5	- 9	65	-18	+ 7
65	- 5	- 8	50	-15	+ 8
50	- 7	- 7	35	-16	+ 8
35	-11	- 9	20	-16	+ 9
20	-11	- 8	05	-16	+12
05	-12	- 8			
			0+90	-20	+10
6+90	-20	-10	75	-25	+ 6
75	-22	-14	60	-28	+ 5
60	-25	-14	45	-32	+ 5
45	-24	-12	30	-34	+ 2
30	-27	-14	15	-37	- 0
15	-24	-10	00	-40	+ 2
00	-25	-10			
			0+15	-40	- 0
5+85	-25	-10	30	-43	- 0
70	-24	- 9	45	-43	- 2
55	-25	-10	60	-45	- 4
40	-27	-11	75	-45	- 4
25	-27	-10	90	-45	- 4
10	-27	-10			
			1+05W	-45	- 5

*R. H. Woody*

CLAIM BOUNDARY NORTH SIDE

15 NORTH LINE

15 NORTH LINE

BASE LINE 0 EAST LINE

10 EAST LINE

5 EAST LINE

CREEK

CLAIM BOUNDARY EAST SIDE

10 NORTH LINE

10 NORTH LINE

ROAD

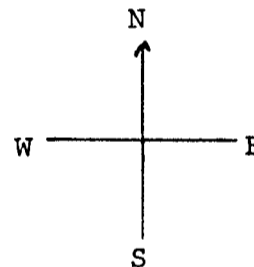
CLAIM BOUNDARY WEST SIDE

5 EAST LINE

10 EAST LINE

6 NORTH LINE

FIGURE 6



5 NORTH LINE

MOON I MINERAL CLAIM #842 (7)  
(6 units)  
DUFFEY LAKE-CAYOOSH CREEK AREA  
LILLOOET MINING DIVISION  
N. LAT. 50°27' W. LONG. 122°16'  
MAP 92J8W

4 NORTH LINE

⊕ LEGAL COURNER POST

SCALE  
200 meters 100 meters 0  
5cm 4cm 3cm 2cm 1 cm 0

3 NORTH LINE

12.75cm = 500m  
• SOIL SAMPLE LOCATION  
IN PHASE READING ON LEFT  
QUAD PHASE READING ON RIGHT

2 NORTH LINE

--- ROAD  
--- CREEK

1 NORTH LINE

0 BASE LINE NORTH

CLAIM BOUNDARY SOUTH SIDE

CLAIM BOUNDARY NORTH SIDE

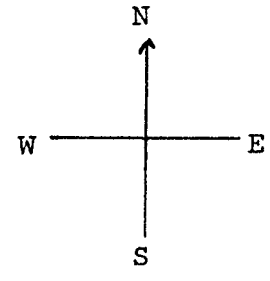
Left Column	Right Column	Distance	Right Column
+25 0	+40 +3	15 NORTH LINE	+36 -13
+23 -2	+45 0	15+00N	+32 -14
+20 +6	+50 -2	15 NORTH LINE	+30 -8
+14 +11	+60 +8		+35 -14
+16 -5	+60 +10		+40 -16
+18 -1	+62 +12		+40 -16
+18 -2	+64 +15		+37 -14
+18 -3	+62 +17		+35 -15
+20 -2	+58 +19		+28 -18
+20 +4	+48 +17		+27 -16
+24 +6	+44 +15		+26 -16
+20 +6	+45 +16		+23 -16
+16 +7	+48 +18		+23 -16
+16 +6	+47 +12		+22 -16
+15 +5	+42 +12		+20 -14
+12 +2	+40 +10		+20 -16
+13 +6	+40 +6		+14 -16
+14 +7	+30 +7		+18 -20
+12 +8	+27 +14		+12 -17
+4 +5	+27 +2		+10 -15
+6 +6	+26 +8		+5 -20
+7 +5	+25 +2		+2 -19
0 +4	+20 +6		+2 -23
+2 +4	+20 +6	12+00N	0 -20
+2 -3	+17 +5		0 -20
+2 +2	+15 +14		0 -24
0 -5	+15 +12		-3 -20
-2 0	+10 +10		-3 -20
-6 -8	+5 +4		-5 -16
-2 -2	+12 +8		-2 -14
0 -2	+6 +8		0 -12
+3 -4	+2 +8		-3 -15
+8 -5	+5 +5		-2 -18
-3 -5	+7 0		-3 -23
-3 +2	-4 -6		-5 -20
-3 +7	-7 -2		-14 -22
+2 +10	-8 +4	10 NORTH LINE	-22 -20
+5 +8	-12 -5	10+00N	-14 -18
+5 +4	-8 0	10 NORTH LINE	-15 -20
+4 +10	-15 0		-19 -19
+5 +8	-10 -3		-20 -22
+7 +3	-7 -7		-20 -24
+5 +5	-17 -6		-20 -24
+5 +2	-25 -8		-16 -22
+10 +4	-30 -8		-20 -18
+17 +6	-40 -18		
+25 +6	-30 -14		
+35 +12	-32 -12		
+40 +8	-24 -15		
+41 +9	-22 -12		
+35 +12	-24 -14		
+25 +9	-30 -14		
+18 +3	-25 -16		
+20 +8	-21 -18		
+19 +5	-15 -20		
+18 +3	-10 -22		
+15 +3	-8 -22		
+15 0	0 -20		
+14 -1	0 -20		
+10 0	-7 -20		
+11 -1	-8 -14		
+11 -1	-11 -20		
+7 -4	-24 -15		
+7 -1	-22 -12		
+7 -5	-18 -14	6+00N	
+4 0	-14 -16		
+6 -3	-15 -17		
+4 -5	-20 -18		
+5 -2	-6 -8		
+8 +2	-15 -8	5+00N	
+7 -4	-17 -7		
+5 +2	-12 -12		
+4 -5	-10 -8		
+7 -3	-6 -14		
+4 -2	-10 -8		
+3 -2	-12 -12	4+00N	
+12 +10	-10 -10		
+6 +6	-8 -10		
+5 0	-15 -14		
0 -2	-22 -20		
-5 -1	-20 -14		
-10 -8	-20 -16		
-4 -8	-16 -16	3+00N	
-7 -1	-22 -11		
-12 -1	-20 -10		
-15 -5	-18 -16		
-18 -8	-18 -12		
-15 -8	-20 -12		
-5 -2	-22 -10	2+00N	
-10 -4	-25 -12		
-12 -4	-25 -17		
-6 +3	-22 -12		
0 +2	-25 -11		
-10 +5	-25 -11		
-10 +5	-30 -14		
-7 -8	-32 -18	1+00N	
-10 +3	-32 -12		
-15 0	-42 -22		
-17 +2	-35 -17		
-20 +1	-30 -27		
-28 -2	-30 -30		
-27 -7	-35 -28		
-25 -8	-35 -24		

SEAST LINE

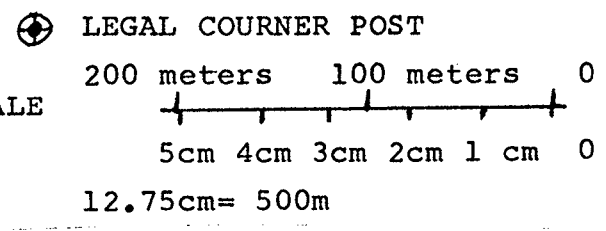
CLAIM BOUNDARY EAST SIDE

10 east line

FIGURE 7



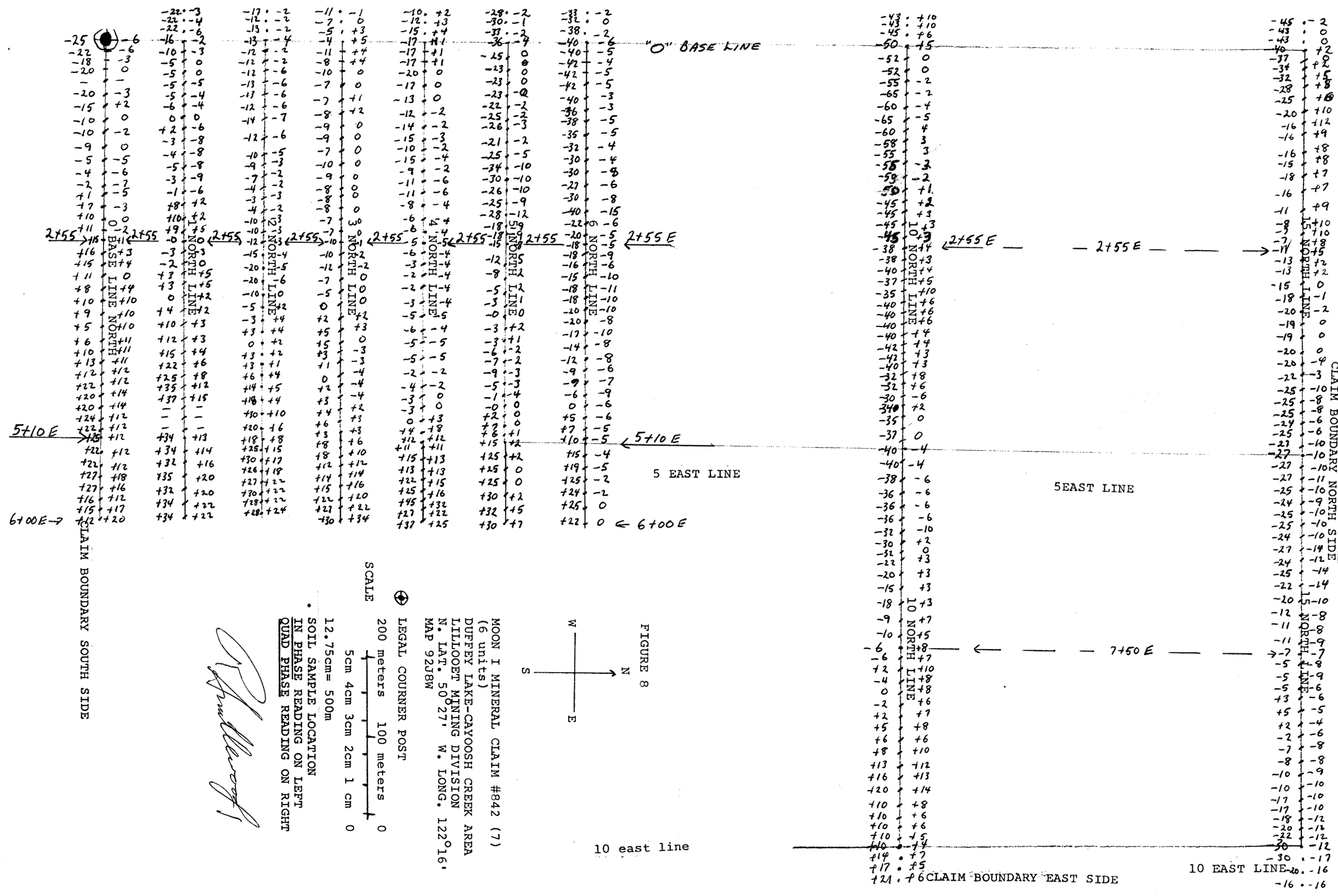
MOON I MINERAL CLAIM #842 (7)  
 (6 units)  
 DUFFEY LAKE-CAYOOSH CREEK AREA  
 LILLOOET MINING DIVISION  
 N. LAT. 50°27' W. LONG. 122°16'  
 MAP 92J8W



• SOIL SAMPLE LOCATION  
 IN PHASE READING ON LEFT  
 QUAD PHASE READING ON RIGHT

*R. Snellwooff*

CLAIM BOUNDARY SOUTH SIDE



-25  
-22  
-18  
-20  
-1  
-20  
-15  
-10  
-10  
-9  
-5  
-4  
-2  
+7  
+10  
+11  
+16  
+15  
+11  
+8  
+10  
+9  
+5  
+6  
+10  
+13  
+12  
+22  
+20  
+20  
+24  
+22  
+27  
+27  
+16  
+15  
+12

-22  
-22  
-16  
-10  
-5  
-5  
-4  
+2  
-3  
-4  
-1  
+8  
+10  
+9  
+3  
+3  
+4  
+15  
+22  
+25  
+37  
+34  
+32  
+32  
+34  
+34

-17  
-13  
-12  
-13  
-10  
-12  
-14  
-10  
-9  
-7  
-3  
-2  
-20  
-10  
-5  
+3  
+3  
+6  
+18  
+25  
+27  
+30  
+28  
+28

-11  
-7  
-5  
-4  
-11  
-8  
-7  
-9  
-10  
-9  
-11  
-8  
-6  
-6  
-3  
-2  
+4  
+3  
+3  
+4  
+8  
+12  
+13  
+13  
+25  
+25  
+32  
+27  
+37

-10  
-12  
-15  
-17  
-20  
-17  
-13  
-12  
-15  
-10  
-9  
-11  
-8  
-6  
-6  
-3  
-2  
+4  
+12  
+15  
+15  
+25  
+25  
+30  
+32  
+30

-28  
-30  
-37  
-36  
-25  
-23  
-23  
-22  
-25  
-26  
-21  
-25  
-34  
-30  
-26  
-25  
-28  
-18  
-12  
-12  
-9  
-5  
-3  
-7  
-9  
-6  
+2  
+7  
+15  
+15  
+25  
+25  
+30  
+32  
+30

-33  
-32  
-40  
-40  
-42  
-42  
-40  
-36  
-38  
-35  
-32  
-30  
-30  
-27  
-30  
-40  
-22  
-18  
-16  
-15  
-18  
-18  
-20  
-20  
-17  
-14  
-12  
-9  
-6  
+5  
+7  
+10  
+15  
+19  
+25  
+24  
+25  
+22  
+22

-43  
-45  
-50  
-52  
-55  
-65  
-60  
-65  
-60  
-58  
-55  
-58  
-50  
-45  
-45  
-38  
-38  
-40  
-37  
-35  
-40  
-40  
-40  
-42  
-42  
-40  
-32  
-32  
-30  
-34  
-35  
-40  
-40  
-38  
-40  
-36  
-36  
-36  
-30  
-31  
-22  
-20  
-15  
-18  
-9  
-10  
-6  
+2  
+4  
+8  
+8  
+8  
+6  
+8  
+10  
+13  
+16  
+20  
+10  
+10  
+10  
+10  
+10  
+14  
+17  
+21

-45  
-43  
-43  
-46  
-37  
-34  
-32  
-28  
-25  
-20  
-16  
-16  
-16  
-15  
-18  
-16  
-8  
-7  
-11  
-8  
-7  
-13  
-13  
-15  
-18  
-20  
-19  
-20  
-20  
-42  
-42  
-40  
-32  
-32  
-30  
-34  
-35  
-40  
-40  
-38  
-40  
-36  
-36  
-36  
-30  
-31  
-22  
-20  
-15  
-18  
-9  
-10  
-6  
+2  
+4  
+8  
+8  
+8  
+6  
+8  
+10  
+13  
+16  
+20  
+10  
+10  
+10  
+10  
+10  
+14  
+17  
+21

-45  
-43  
-43  
-46  
-37  
-34  
-32  
-28  
-25  
-20  
-16  
-16  
-16  
-15  
-18  
-16  
-8  
-7  
-11  
-8  
-7  
-13  
-13  
-15  
-18  
-20  
-19  
-20  
-20  
-42  
-42  
-40  
-32  
-32  
-30  
-34  
-35  
-40  
-40  
-38  
-40  
-36  
-36  
-36  
-30  
-31  
-22  
-20  
-15  
-18  
-9  
-10  
-6  
+2  
+4  
+8  
+8  
+8  
+6  
+8  
+10  
+13  
+16  
+20  
+10  
+10  
+10  
+10  
+10  
+14  
+17  
+21

CLAIM BOUNDARY SOUTH SIDE  
 SCALE  
 200 meters  
 100 meters  
 5cm 4cm 3cm 2cm 1 cm 0  
 12.75cm = 500m  
 LEGAL COURNER POST  
 SOIL SAMPLE LOCATION  
 IN PHASE READING ON LEFT  
 QUAD PHASE READING ON RIGHT

MOON I MINERAL CLAIM #842 (7)  
 (6 units)  
 DUFFEY LAKE-CAYOOSH CREEK AREA  
 LILLOOET MINING DIVISION  
 N. LAT. 50° 27' W. LONG. 122° 16'  
 MAP 92J8W

FIGURE 8  
 W  
 N  
 S  
 E

10 east line  
 CLAIM BOUNDARY EAST SIDE  
 10 EAST LINE