

84-#973 - 12811

GEOCHEMICAL REPORT
on the
DON AND PESO CLAIMS
CARIBOO MINING DIVISION
LATITUDE 52°35' LONGITUDE 121°29'W

93 A 11W

OPERATOR JMT SERVICES CORP.
8827 Hudson Street
Vancouver, B.C.
OWNER J. S. Christie
WRITTEN BY K. W. Livingstone
DATED November 2, 1984

**GEOLOGICAL BRANCH
ASSESSMENT REPORT**

12,811

TABLE OF CONTENTS

INTRODUCTION	1 /
LOCATION AND ACCESS	1 /
MINERAL CLAIMS	1 /
GEOLOGY	1 /
GEOCHEMISTRY	4 /
CONCLUSIONS	4 /
STATEMENT OF COSTS	5 /
STATEMENT OF QUALIFICATIONS	6 /

LIST OF ILLUSTRATIONS

FIGURE 1	PROPERTY LOCATION MAP	2 /
FIGURE 2	CLAIM MAP	3 /
FIGURE 3	GEOCHEMISTRY	IN POCKET /

INTRODUCTION

The Peso and Don claim area was staked by R. Mickle, Likely, B.C. in 1977. Diligent prospecting by Bob Mickle by crushing friable altered rocks and hand panning to test for gold has revealed several showings in the prospect area. Much of the Don claim area has been the focus of extensive exploration activity and sampling. This work has outlined a large coincident gold and antimony geochemical anomaly. Part of the Peso claim was not geochemically tested and this report primarily focuses on this hitherto untested area.

LOCATION AND ACCESS

The Don and Peso claim area is located on the north side of Spanish Mountain including the Spanish Creek Valley. The property is accessible by vehicle on an all-weather road 8 km east of Likely, B.C. Access on the property is by various logging and mining roads using 4 wheel drive vehicles.

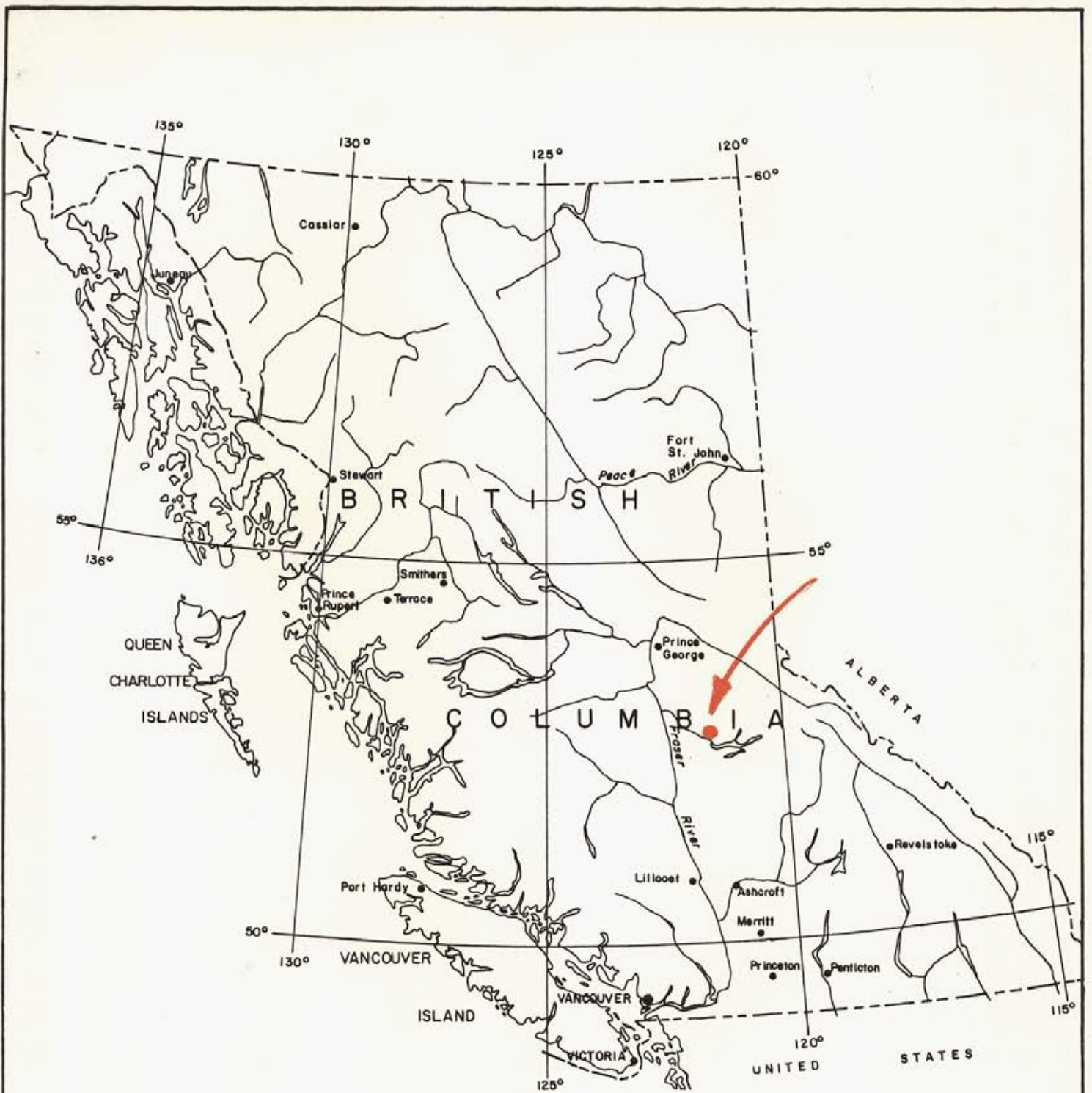
The property is on map 93A/11W, latitude 52°35'N, longitude 121°29'W

MINERAL CLAIMS

<u>CLAIM NAME</u>	<u># UNIT</u>	<u>RECORD NO.</u>
DON #1-#4		1383 - 1386 (12)
PESO	9	487 (9)
JUL 2	9	1853 (8)

GEOLOGY

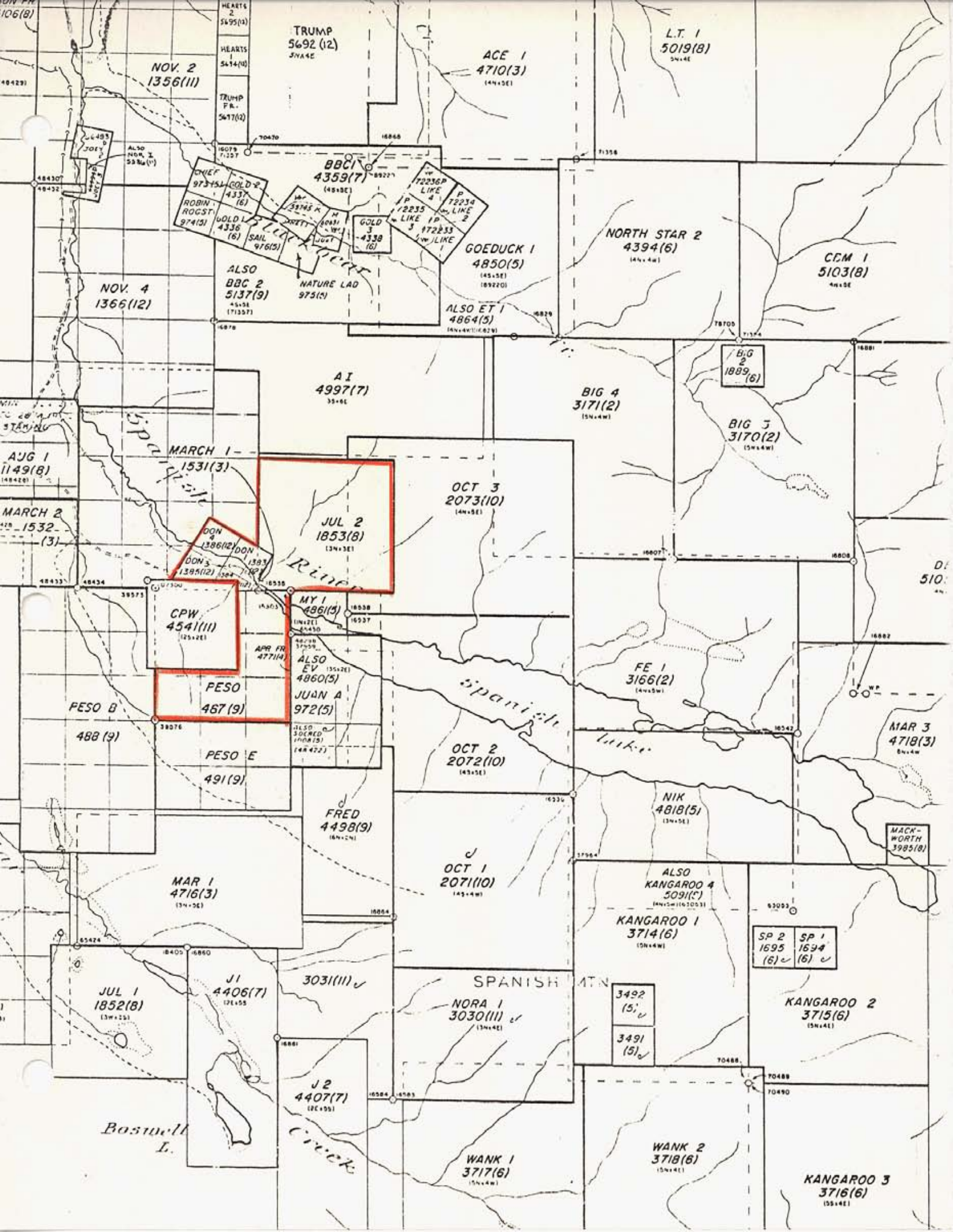
The claim area is underlain by a sequence of Upper Triassic black phyllite and argillite with minor local interbeds of coarser arenaceous rocks. The original textures of these rocks have been largely obliterated by intense shearing. Locally these rocks are intruded by leucocratic sericitic rhyolite (?) dykes and plugs.



PROPERTY LOCATION MAP



Prepared by:	Date:	N.T.S. MAP AREA	DRAWING No.
Drawn by:	Revised:		



NOV 2
1356(11)

TRUMP
5692 (12)
5N44E

ACE 1
4710(3)
(4N+3E)

L.T. 1
5019(8)
5N+4E

BBC1
4359(7)
(4S+3E)

GOEDUCK 1
4850(5)
(4S+3E)
(89220)

NORTH STAR 2
4394(6)
(4N+4W)

CEM 1
5103(8)
4N+3E

NOV 4
1366(12)

ALSO
BBC 2
5137(9)
4S+3E
(171327)

NATURE LAD
975(5)

ALSO ET 1
4864(5)
(4N+4W)(629)

AI
4997(7)
3S+6E

BIG 4
3171(2)
(5N+4W)

BIG 2
1889
(6)

BIG 3
3170(2)
(5N+4W)

MARCH 1-
1531(3)

JUL 2
1853(8)
(3N+3E)

OCT 3
2073(10)
(4N+3E)

DON 4
1386(12)
DON 3
1385(12)

MY 1
486(5)
(4N+3E)

CPW
454(111)
(2S+2E)

ALSO
EV
4860(5)
(3S+2E)

JUAN A
972(5)
(4N+4E)

FE 1
3166(2)
(4N+3W)

PESO B
488(9)

PESO E
491(9)

OCT 2
2072(10)
(4S+3E)

FRED
4498(9)
(6N+2W)

NIK
4818(5)
(3N+3E)

MAR 3
4718(3)
8N+4W

MAR 1
4716(3)
(3N+3E)

OCT 1
207(10)
(4S+4W)

ALSO
KANGAROO 4
509(5)
(4N+4W)(16303)

KANGAROO 1
3714(6)
(5N+4W)

SP 2
1695
(6) ✓

SP 1
1694
(6) ✓

KANGAROO 2
3715(6)
(5N+4E)

JUL 1
1852(8)
(3N+3E)

J1
4406(7)
(2E+5S)

3031(11) ✓

NORA 1
3030(11) ✓
(3N+4E)

3492
(5) ✓

3491
(5) ✓

J2
4407(7)
(2E+5S)

WANK 1
3717(6)
(5N+4W)

WANK 2
3718(6)
(5N+4E)

KANGAROO 3
3716(6)
(5S+4E)

Boswell L.

Spanish Creek

SPANISH Mtn

GEOCHEMISTRY

Soils were collected from the B horizon and placed in kraft sample bags. The sample were dried and sieved. The -80 mesh was analyzed by Chemex Labs, North Vancouver, B.C. for gold by neutron activation analysis.

A total of 66 soil, 2 silt and 6 rock samples were analyzed. The area has complex staking and some time was taken to establish claim boundaries prior to the geochemical survey. Once the CPW LCP and the PESO LCP were located, a baseline was established for sampling on the south portion of the PESO claim. Initially 100 m lines were established and 25 m samples were taken. The grid was only partially completed at this time and the additional lines are the subject of future assessment report.

CONCLUSIONS

The soil geochemical values for gold ranged up to 3838 ppb and several anomalous zones were established in the west part of the grid area. These are strong anomalies and will require further follow up. It is recommended to complete the grid area.

STATEMENT OF COSTS

K. W. Livingstone, geologist, supervisor		
July 11-12	2 days @ \$250.00	\$ 500.00
D. Bennett, geologist		
July 7, 10-16	6 days @ \$200	1,200.00
	9 day (pro rate geochem)	

DISBURSEMENTS

Truck rental	6 days @ \$35.00	210.00
Truck mileage	980 miles (Vanc. to property)	196.00
Truck gas		225.00
Food and lodgings	- 8 mandays @ \$35.00	280.00
Supplies consumed - flagging, bags, etc.		100.00
Report preparation		750.00
		\$3,461.00

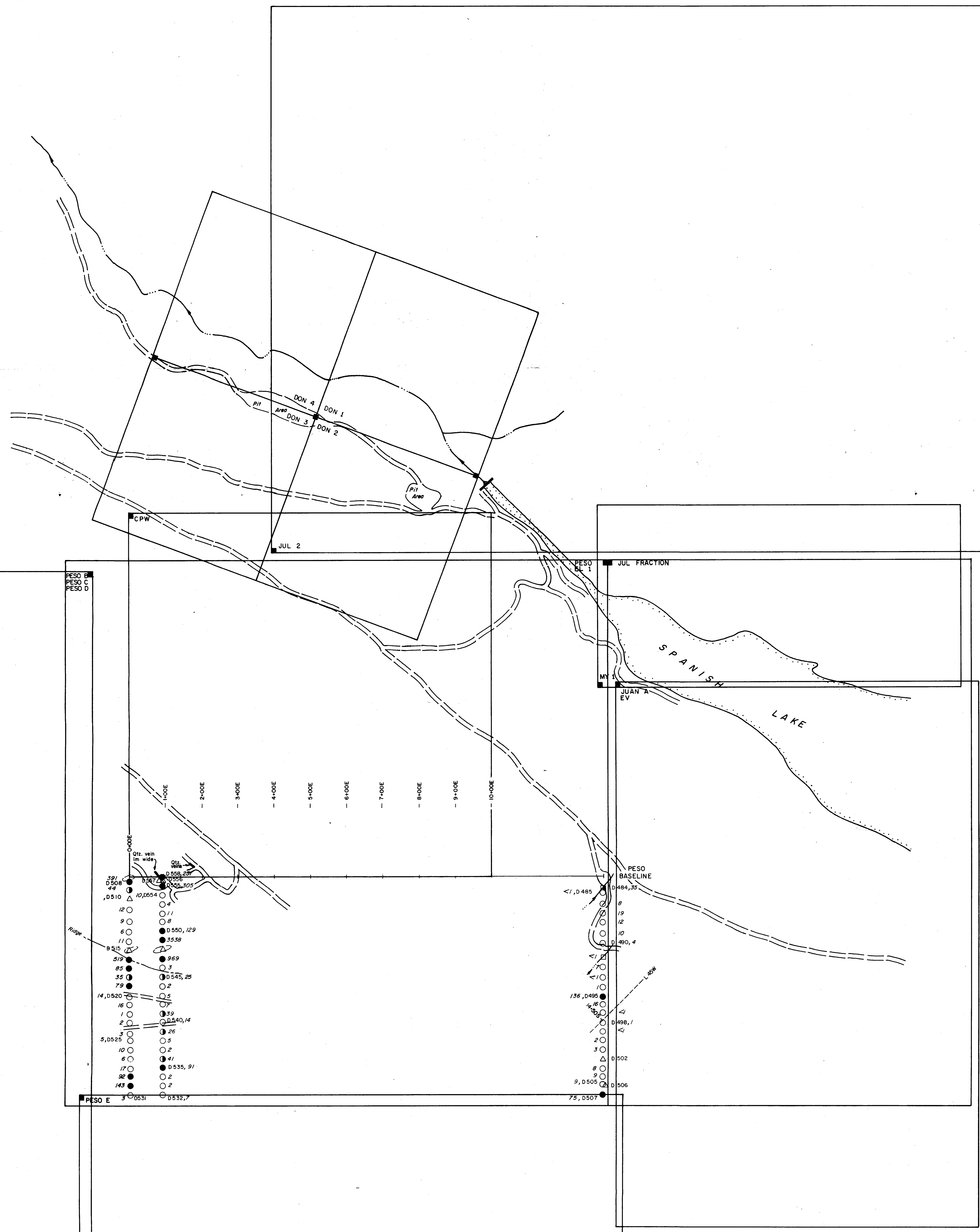
STATEMENT OF QUALIFICATIONS

I, K. WAYNE LIVINGSTONE of Vancouver, British Columbia do hereby certify that,

1. I am a Professional Geologist, working in British Columbia and residing at 6775 West Blvd., Vancouver, B.C.
2. I am a graduate of CARLETON UNIVERSITY, Ottawa, Ontario with a B.Sc. honours geology, 1966.
3. I am a graduate of the UNIVERSITY OF BRITISH COLUMBIA with a M.Sc. geology, 1968.
4. I have practiced my profession as a mining exploration geologist since 1965.
5. I am a Member of the Geological Association of Canada.
6. I am a Member of the C.I.M.M.
7. This report is based on personal knowledge of the geology and mineral potential of the claim area.



K. Wayne Livingstone, M.Sc.

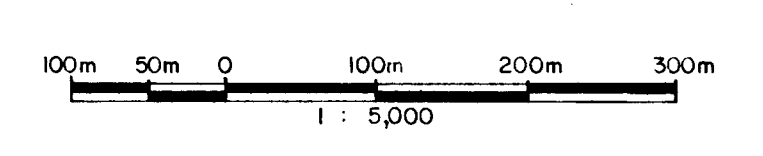


HYCROFT RESOURCES AND DEVELOPMENT CORP
 —DON PROSPECT—
 CARIBOO MINING DIVISION — SPANISH LAKE AREA
CLAIM MAP & PESO GRID
GOLD GEOCHEMISTRY

- LEGEND:**
- == ROAD
 - STREAM
 - L.C.P. & CLAIM NAME
 - MINERAL CLAIM BOUNDARY
 - SOIL SAMPLE LOCATION
 - SILT SAMPLE LOCATION
 - △ ROCK SAMPLE LOCATION
 - 0 498 SAMPLE NUMBER
 - 136 GOLD GEOCHEMISTRY, ppb.
 - VALUE 25 - 49 ppb.
 - VALUE ≥ 50 ppb.

GEOLOGICAL BRANCH
ASSESSMENT REPORT

12,811



BY JMT SERVICES CORP.