

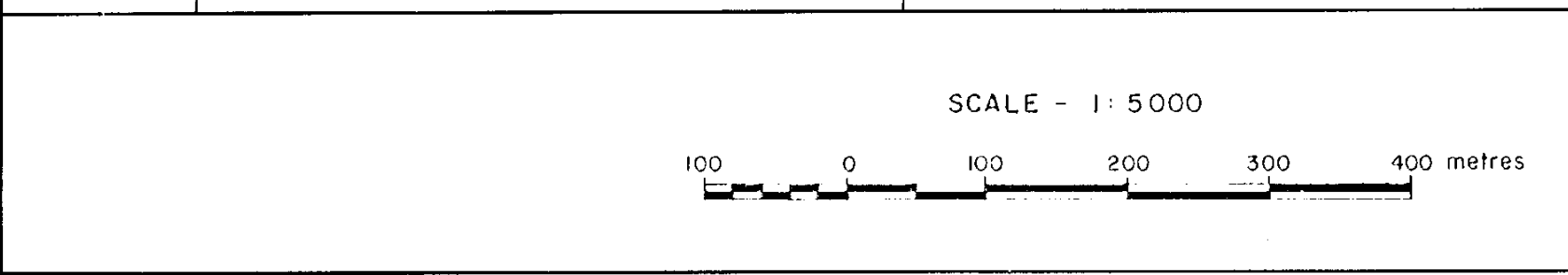
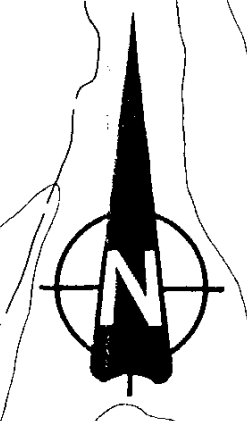
**GEOLOGICAL BRANCH  
ASSESSMENT REPORT**

**12,860**

PART 2 OF 2

**LEGEND**

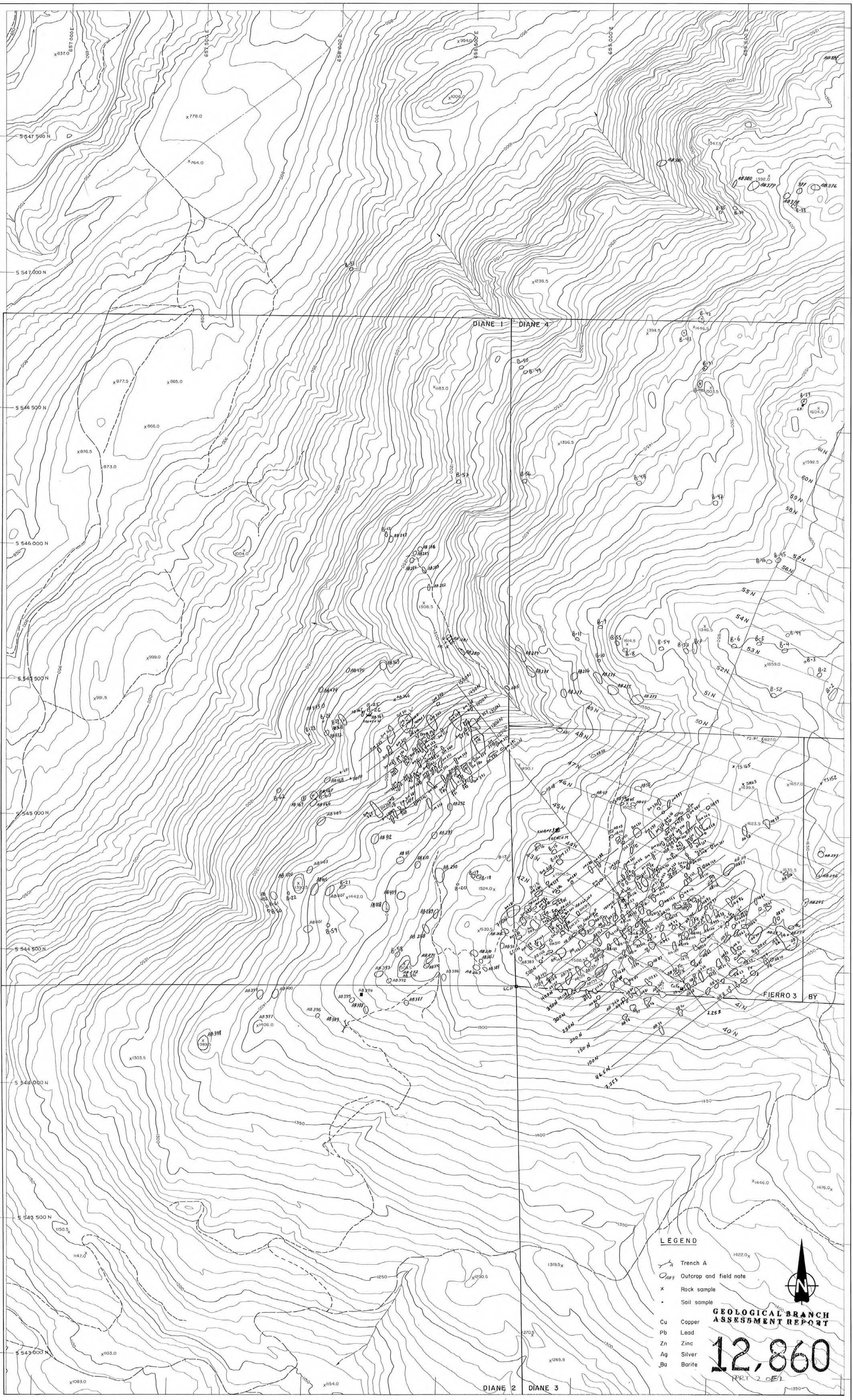
- A Trench A
- x Rock sample
- Soil sample
- x 147.37, 2 Cu (ppm), Ag (ppm), Au (ppb)
- \* S 5ppb Au



Sheet Index  
1 2  
PRELIMINARY RECONNAISSANCE TYPE MAPPING  
Scale and elevation datum based on United Grid Control resulting in grid values for projection map accuracy

**THE McELHANNEY GROUP LTD.**  
1166 Alberni Street, Vancouver B.C., Canada  
McElhanney  
SCALE 1:5000 CONTOUR INTERVAL 10 METRES  
DATE COMPLETED June 1984 SHEET NUMBER 2 of 2  
REF. No. 40138-0

**KIDD CREEK MINES LTD.**  
**IRON MOUNTAIN  
GEOCHEMISTRY**  
NTS 921/2E/2W ORTHOPHOTO MAP Fig. 9



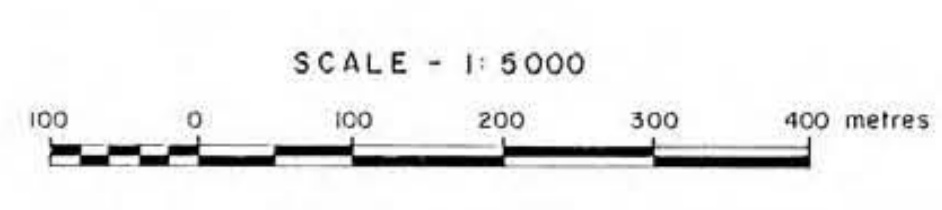
**LEGEND**

- Trench A
- Outcrop and field note
- Rock sample
- Soil sample
- Cu Copper
- Pb Lead
- Zn Zinc
- Ag Silver
- Ba Barite

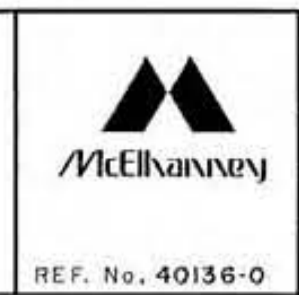


**GEOLOGICAL BRANCH ASSESSMENT REPORT**

**12,860**



Sheet Index  
  
 PRELIMINARY RECONNAISSANCE TYPE MAPPING  
 Scale and elevation data based on limited ground control resulting in good relative but uncertain absolute accuracy



**THE McELHANNEY GROUP LTD.**  
 1166 Alberni Street, Vancouver B.C., Canada  
 Compiled from aerial photography taken in 1979  
 at an approximate scale of 1:20,000  
 SCALE 1:5000 CONTOUR INTERVAL 10 Metres  
 DATE COMPILED June 1984 SHEET NUMBER 1 of 2

**KIDD CREEK MINES LTD.**  
**IRON MOUNTAIN LOCATION MAP**  
 NTS 921/2E/2W ORTHOPHOTO MAP Fig. 6



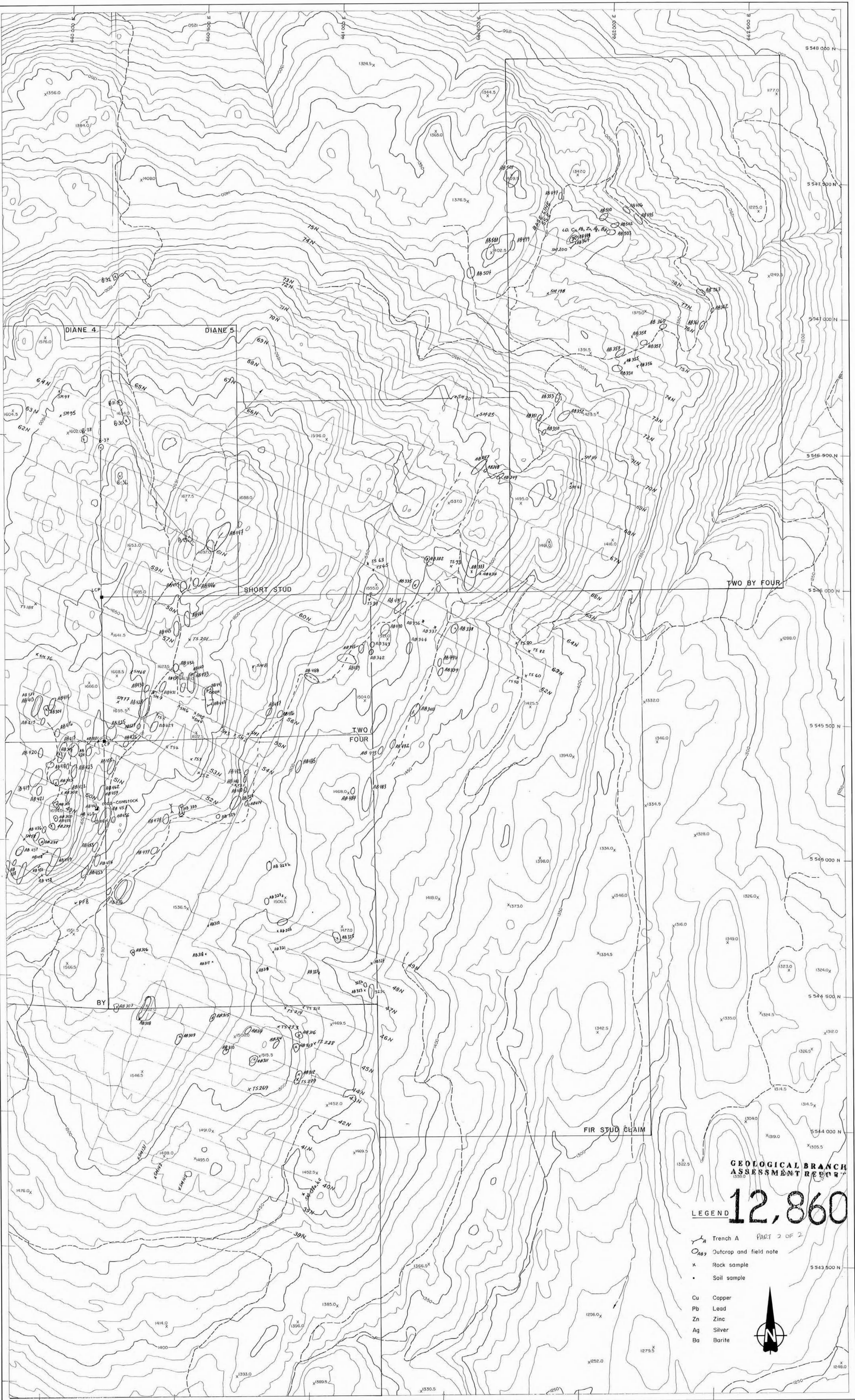
☒, ☒ Trench or shaft location

500W 400W 300W 200W 100W 0 100E 200E 300E 400E

SCHLUMBERGER ARRAY  
 AB = 140m, MN = 20m  
**GEOLOGICAL BRANCH**  
 ASSESSMENT REPORT

**12,860** PART 2 OF 2

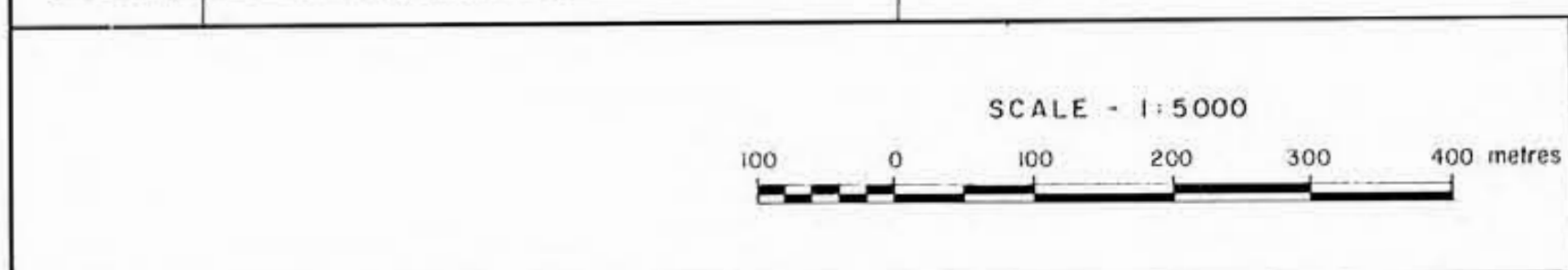
<b>Kidd Creek Mines Ltd.</b>		
KAMLOOPS - MERRITT GOLD (IRON MOUNTAIN)		
IP SURVEY RESISTIVITY ( $\Omega$ -m)		
NTS 92I/2W/2E		Proj. 948
WORK BY GH	DRAWN BY VJG	DATE October 1984
 SCALE IN METRES 1:2000		
Figure: 4		



**GEOLOGICAL BRANCH  
ASSESSMENT REPORT**

**12,860**

- LEGEND**
- Trench A
  - Outcrop and field note
  - Rock sample
  - Soil sample
  - Cu Copper
  - Pb Lead
  - Zn Zinc
  - Ag Silver
  - Ba Barite



Sheet Index  
1 2

PRELIMINARY RECONNAISSANCE TYPE MAPPING  
Scale and elevation shown based on limited ground control resulting in good relative but uncertain map accuracy.

**THE McELHANNEY GROUP LTD.**  
1166 Alberni Street - Vancouver B.C. - Canada

Compiled from aerial photography taken in 1979  
at an approximate scale of 1:20,000

SCALE 1:5000  
CONTOUR INTERVAL 10 Metres

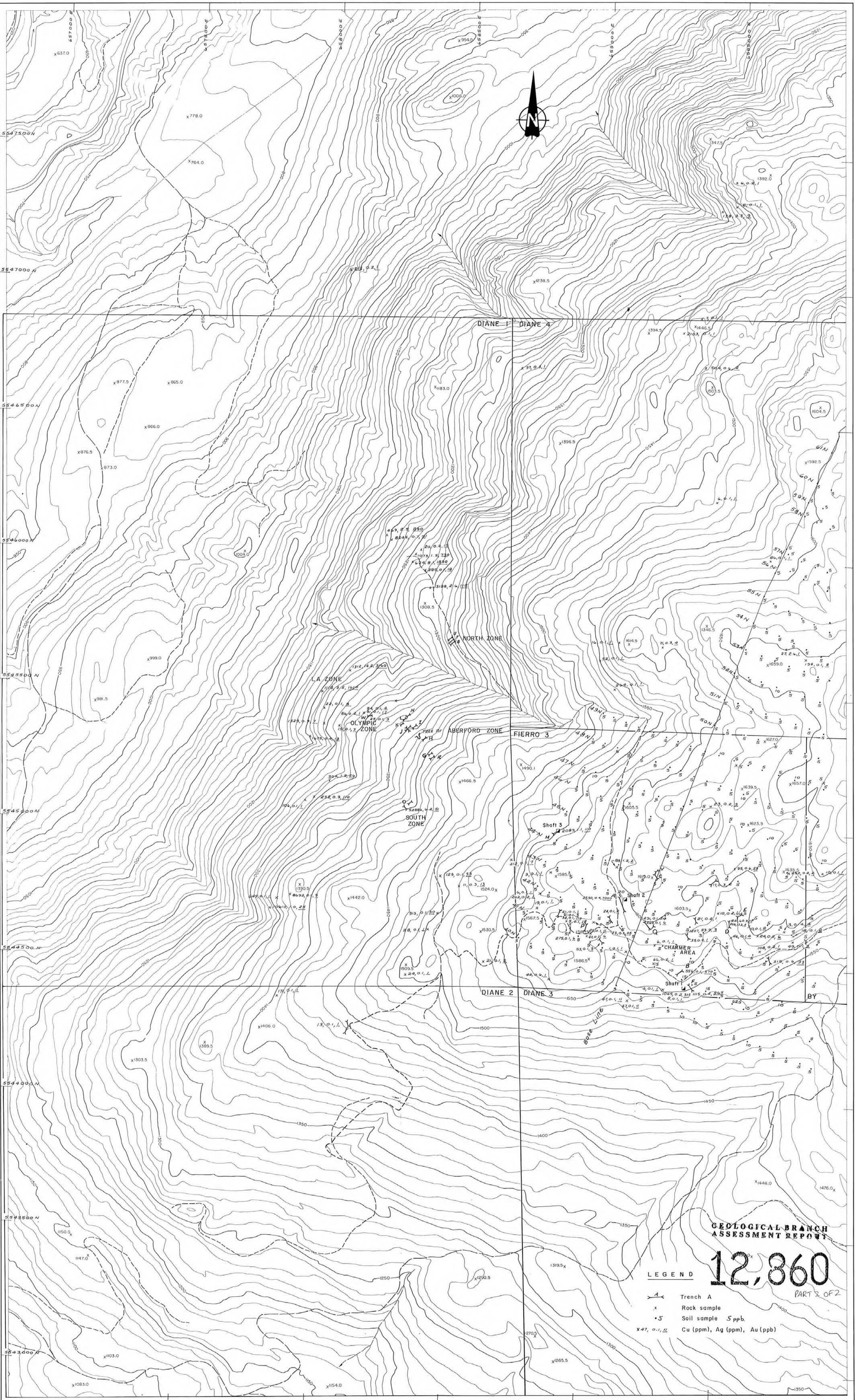
DATE COMPLETED June 1984 SHEET NUMBER 2 of 2

REF. No. 40138-0

**KIDD CREEK MINES LTD.**

**IRON MOUNTAIN  
LOCATION MAP**

N15 92/2E/2W ORTHOPHOTO MAP Fig. 8

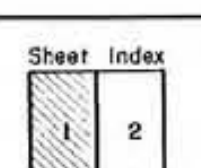
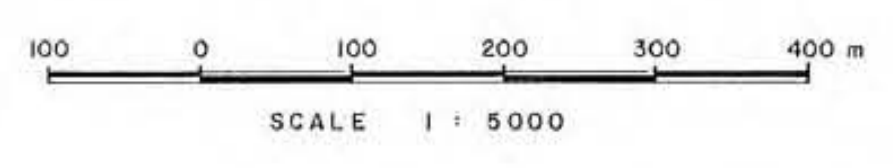


**GEOLOGICAL BRANCH  
ASSESSMENT REPORT**

**12,860**  
PART 2 OF 2

**LEGEND**

- Trench A
- Rock sample
- Soil sample 5 ppb
- Cu (ppm), Ag (ppm), Au (ppb)



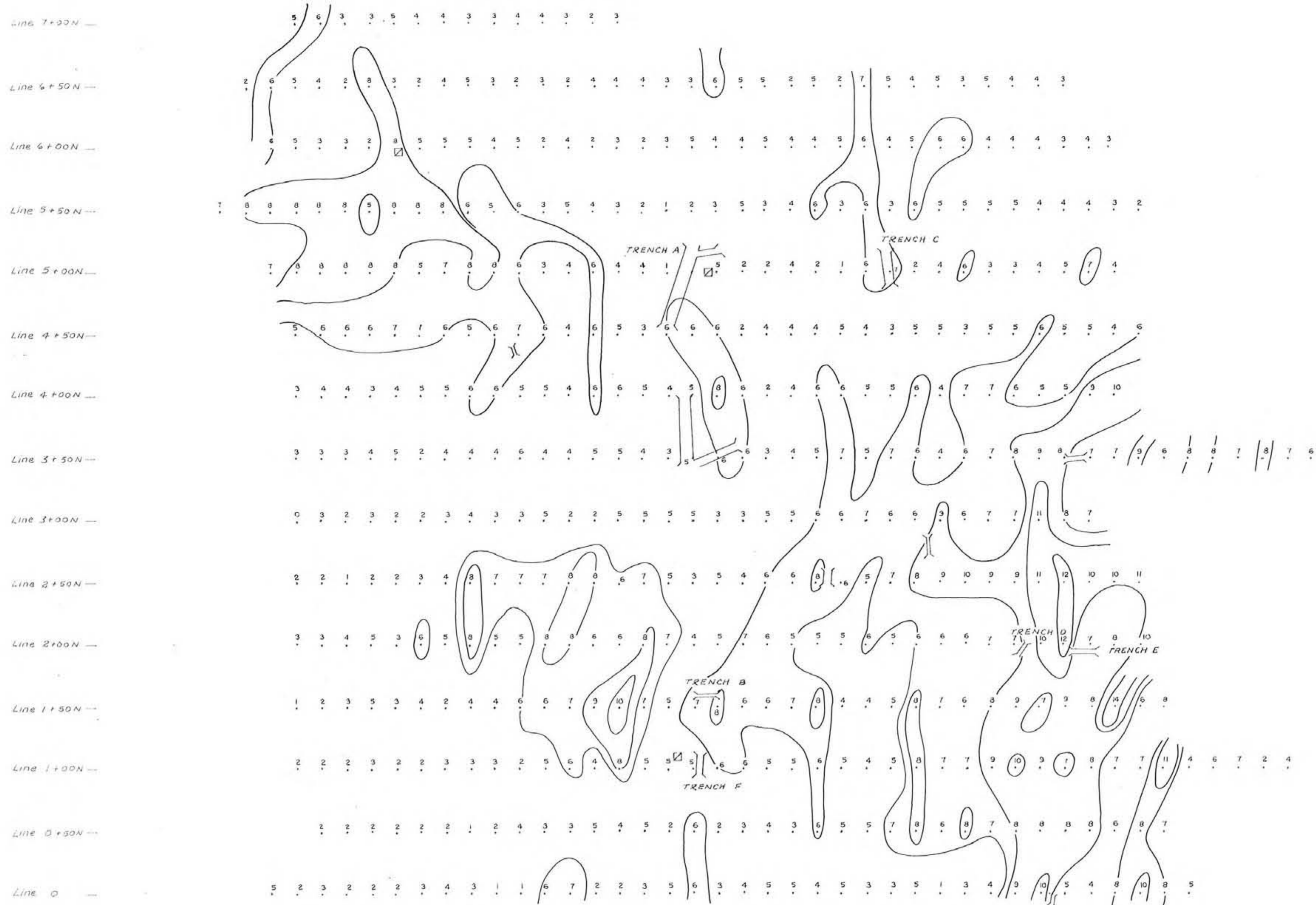
PRELIMINARY RECONNAISSANCE TYPE MAPPING  
Scale and elevation shown based on limited ground control resulting in good relative but uncertain map accuracy



**THE McELHANNEY GROUP LTD.**  
1160 Alberni Street, Vancouver B.C., Canada  
Compiled from aerial photography taken in 1979  
at an approximate scale of 1:20,000  
SCALE 1 : 5000 CONTOUR INTERVAL 10 Metres  
DATE COMPILED June 1984 SHEET NUMBER 1 of 2

KIDD CREEK MINES LTD.

**IRON MOUNTAIN  
GEOCHEMISTRY**



☒, ☒ Trench or shaft location

SCHLUMBERGER ARRAY  
AB = 140m, MN = 20m

Contour interval: 2 msec  
**GEOLOGICAL BRANCH**  
**ASSESSMENT REPORT**

**12,860**

PART 2  
OF 2

**Kidd Creek Mines Ltd.**

KAMLOOPS - MERRITT GOLD  
(IRON MOUNTAIN)

IP SURVEY  
CHARGEABILITY (mV/V)

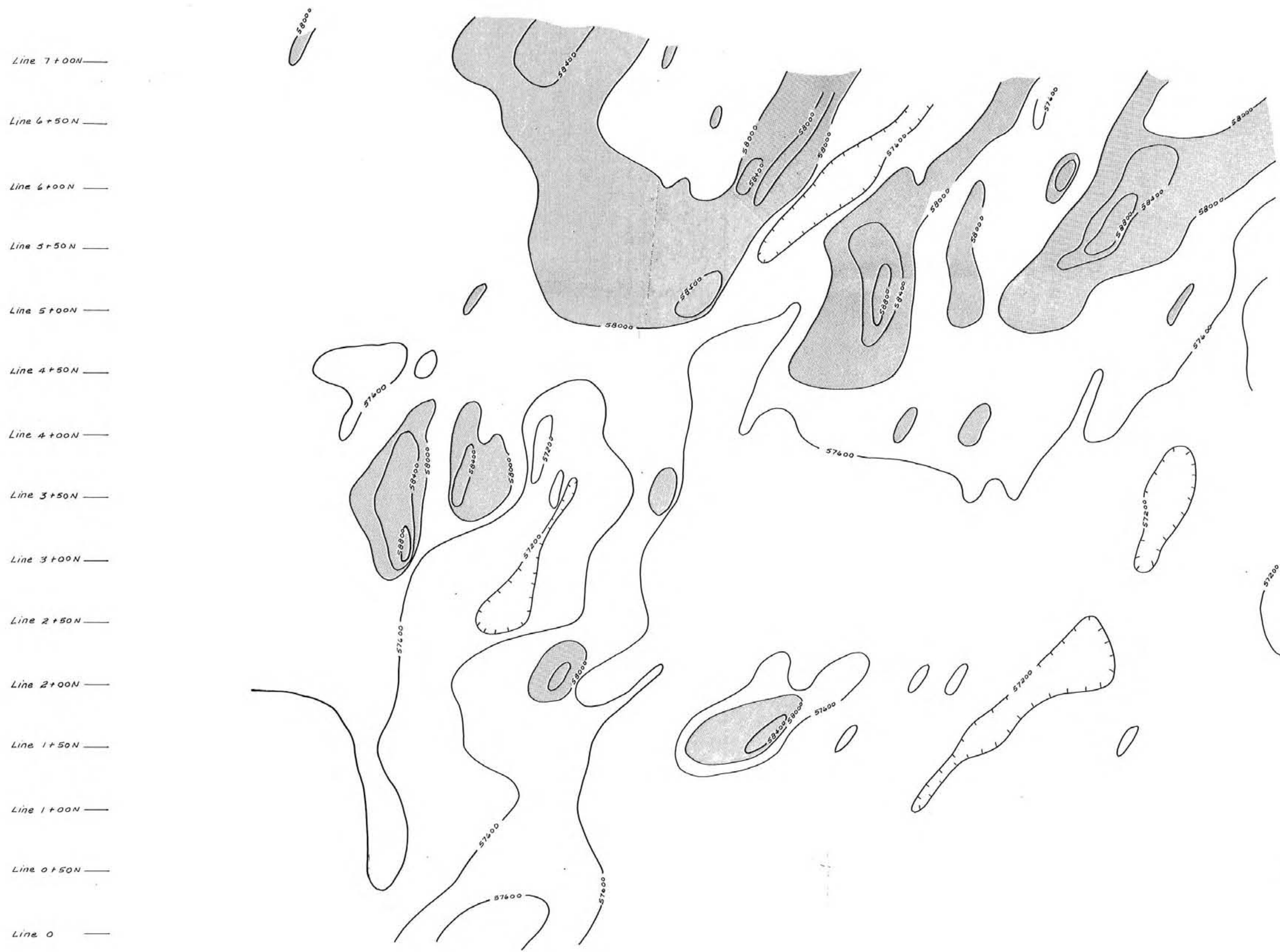
NTS 921/2W/2E

Proj: 948

WORK BY GH	DRAWN BY VJG	DATE October 1984
---------------	-----------------	----------------------

50 0 50 100 150  
SCALE IN METRES 1: 2000

Figure: 3



Contour interval : 400  $\pm$   
 Shaded areas above 58,000  $\pm$   
**GEOLOGICAL BRANCH**  
**ASSESSMENT REPORT** PART 2  
 OF 2

**12,860**

500W 400W 300W 200W 100W 0 100E 200E 300E 400E

<b>Kidd Creek Mines Ltd.</b>		
KAMLOOPS - MERRITT GOLD (IRON MOUNTAIN)		
MAGNETIC CONTOUR MAP TOTAL FIELD		
NTS 921/2W/2E		Proj. 948
WORK BY T.H.	DRAWN BY ER	DATE: SEPT. 27 / 1984
SCALE IN METRES 1 : 2000		
Figure: 5		