

84-#878-12892  
10/85

BLUE RIVER FELDSPAR

A DIAMOND DRILLING REPORT FOR  
CLAIMS BLUE 1-3 INCLUSIVE  
IN THE KAMLOOPS MINING DIVISION

---

NTS MAP REFERENCE 83D/3W

LATITUDE 52°07' LONGITUDE 119°27' 21'

---

OWNED BY G. ROBERT GUILLET

OPERATED BY G.R. GUILLET  
J. KRIENS  
J.T. MORTON

---

REPORT BY G.R. GUILLET

OCTOBER 2, 1984

**GEOLOGICAL BRANCH  
ASSESSMENT REPORT**

**12,892**

## TABLE OF CONTENTS

	<u>PAGE</u>
INTRODUCTION	1
SITE LOCATION MAP	2
PRODUCT ANALYSES	3
DRILLHOLE LOCATION SKETCH	4
DIAMOND DRILLHOLE LOG	5
AERIAL PHOTOGRAPH	7
COST STATEMENT	8
AUTHOR'S QUALIFICATIONS	9

## INTRODUCTION

### BLUE RIVER FELDSPAR

This is a new deposit of white feldspar pegmatite not previously reported or explored. It is located less than 3 km west of the town of Blue River, British Columbia, on the Yellowhead South Highway (Highway 5) approximately midway between Vancouver and Edmonton. Blue River is also served by the Canadian National Railway and an airstrip.

The deposit is secured by three claims of 20 ha each, oriented along the strike of the pegmatite, protecting it over a length of 1,370 m and a width of 457 m. The pegmatite is a very coarse assemblage of white feldspar and quartz with accessory muscovite, enclosed in a host rock of biotite gneiss. The dike is exposed along the base and lower terrace of part of the Cariboo Mountains which here form the north valley wall of the Blue River. It strikes in a northeasterly direction and dips vertically. The valley floor here is flat and has recently been clear-cut.

The main exposure is easily accessible by road 3 km from the CNR siding at Blue River. Here a single hole was drilled in May 1984 into the base of the mountain angled 40° down from horizontal. The hole encountered two pegmatite sections of 5.8 m and 3.4 m separated by biotite gneiss before encountering the main pegmatite zone at 24.4 m. The hole was terminated at 40 m still in pegmatite. More drilling is obviously necessary to prove its ultimate potential.

The drillcore was split, logged and sampled. Samples were processed by dry magnetic separation to an acceptable glass-grade product. A superior product, eliminating free quartz, could be produced by flotation.

# SITE LOCATION MAP



Scale 1:50,000  
 NTS Map 83D/3W

SHUSWAP HIC

PRODUCT ANALYSES - BLUE RIVER FELDSPAR

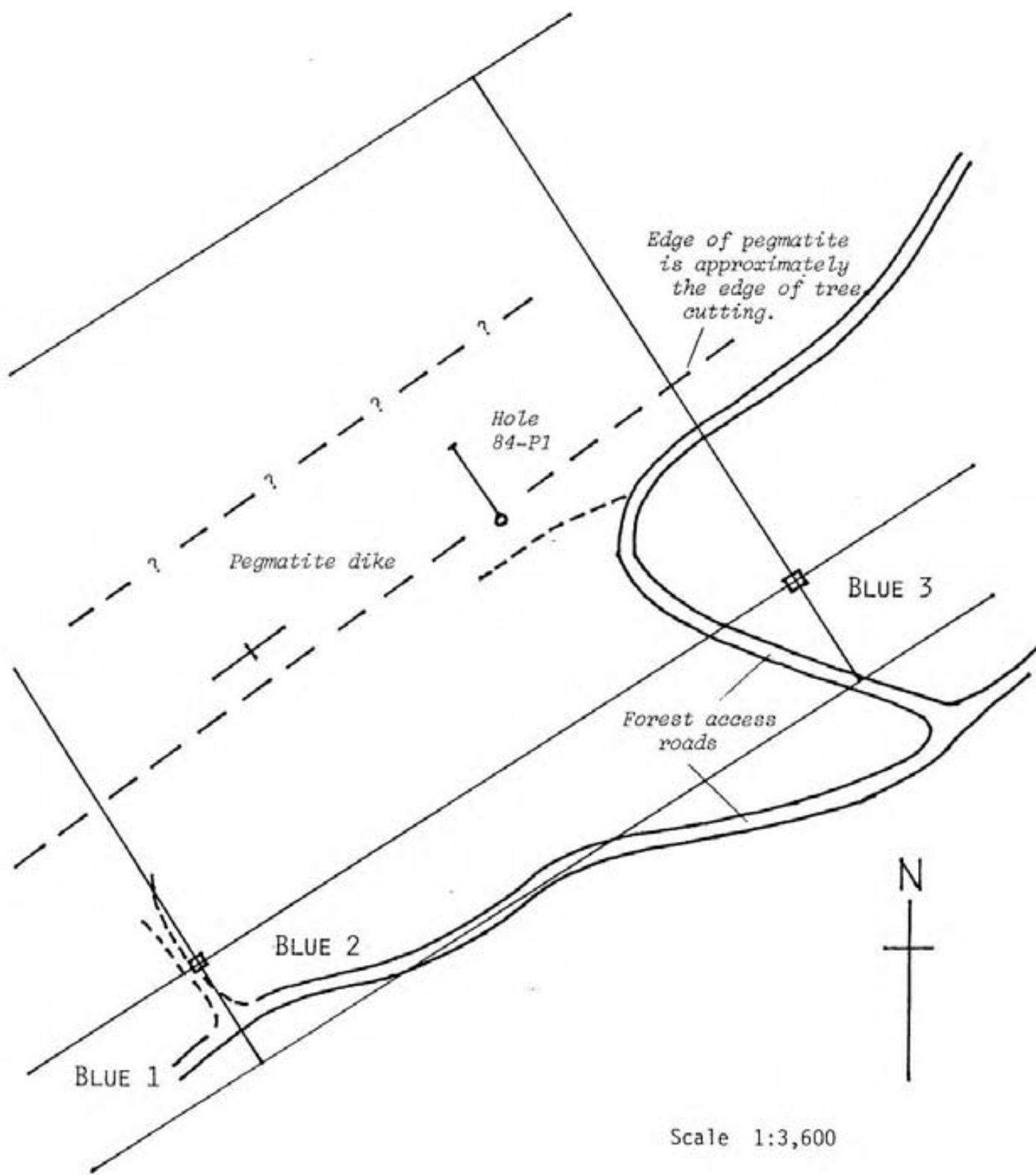
Drillcore analyses after dry magnetic separation.

	<u>P1-4</u>	<u>P1-5</u>	<u>P1-6</u>	<u>Weighted average</u>
SiO <sub>2</sub>	73.5	73.5	75.5	74.4
Al <sub>2</sub> O <sub>3</sub>	14.8	15.5	13.8	14.7
Fe <sub>2</sub> O <sub>3</sub>	0.070	0.069	0.084	0.076
CaO	1.54	1.94	1.57	1.73
MgO	0.04	0.04	0.05	0.04
Na <sub>2</sub> O	3.57	4.02	3.85	3.89
K <sub>2</sub> O	5.23	4.92	3.95	4.53
MnO	< 0.01	< 0.01	< 0.01	< 0.01
TiO <sub>2</sub>	0.01	0.01	0.01	0.01
P <sub>2</sub> O <sub>5</sub>	0.03	0.02	0.02	0.02
LOI	0.39	0.47	0.62	0.53
	<u>99.3</u>	<u>100.6</u>	<u>99.5</u>	<u>99.9</u>
Chromium (ppm)	< 10	< 10	< 10	< 10
Rubidium	150	140	120	130
Strontium	680	660	580	630
Yttrium	< 10	10	< 10	< 10
Zirconium	< 10	< 10	10	< 10
Niobium	30	20	20	20
Thickness sampled	1.8m	6.4m	6.4m	14.6m

Processing by IMD Laboratories Limited.

Analyses by X-Ray Assay Laboratories Limited.

DRILLHOLE LOCATION SKETCH



## DIAMOND DRILLHOLE LOG - NQ size

DIAMOND DRILLHOLE LOG - NQ size				COMPANY Guillet-Kriens-Morton		PROPERTY NAME Blue River feldspar			HOLE NO. 84-91	PAGE 1			
DRILLING COMPANY Phil's Diamond Drilling Ltd.		COLLAR ELEV.	BEARING OF HOLE 329° T	TOTAL DEPTH 40 metres		LOCATION OF HOLE Base of the ridge, about 100m west of road in east - centre of claim Blue 2.			PROJECT NO.				
CORE SIZE 47.6mm Diam.		DATE COMPLETED May 1984	DATE LOGGED June 20/84	DIP OF HOLE AT COLLAR 40° AT					LOGGED BY G.R. Guillet				
DEPTH From To		VISUAL QUALITY	DESCRIPTION		Sample Number	Sample From	Interval To	Sample Length	Product of dry magnetic separation				
Metres Metres						Metres	Metres	Metres	Fe <sub>2</sub> O <sub>3</sub>	Al <sub>2</sub> O <sub>3</sub>	CaO	Na <sub>2</sub> O	K <sub>2</sub> O
									%	%	%	%	%
0.0	4.3		Overburden.										
4.3	8.2		Biotite gneiss: Medium to coarse grained biotite-quartz-feldspar gneiss with minor garnet and muscovite. Strong uniform foliation at 45° to core axis.										
8.2	14.0	Good	Pegmatite: Very coarse, white, uniform. Glassy quartz, white feldspar (mostly plagioclase), white mica in approximately the proportion of 40-55-5 respectively. Occasional red garnet and biotite, both typically rimmed by muscovite. Massive unbroken and unstained core.		P1-1	8.2	14.0	5.8	.107	15.5	2.74	4.42	2.42
14.0	19.2		Biotite gneiss: Uniform, coarse grained biotite-quartz-feldspar gneiss with minor garnet and muscovite; several small (0.3 m or less) patches of white pegmatite. Foliation at 45° to core axis. Contacts with pegmatite are surprisingly sharp.		P1-2	14.0	19.2	5.2					
19.2	22.6	Good	Pegmatite: White with two sections of massive glassy quartz (from 20.7 to 21.4 and from 22.0 to 22.6). Several 3mm streaks of pyrite in the second quartz section.		P1-3	19.2	22.6	3.4	.092	12.3	1.63	3.47	3.41
22.6	24.4		Biotite gneiss: Uniform, strongly foliated at 45°.										
24.4	26.2	Good	Pegmatite: Uniform, very coarse, white quartz-feldspar-muscovite-garnet-biotite pegmatite in sharp contact with gneiss.		P1-4	24.4	26.2	1.8	.070	14.8	1.54	3.57	5.23



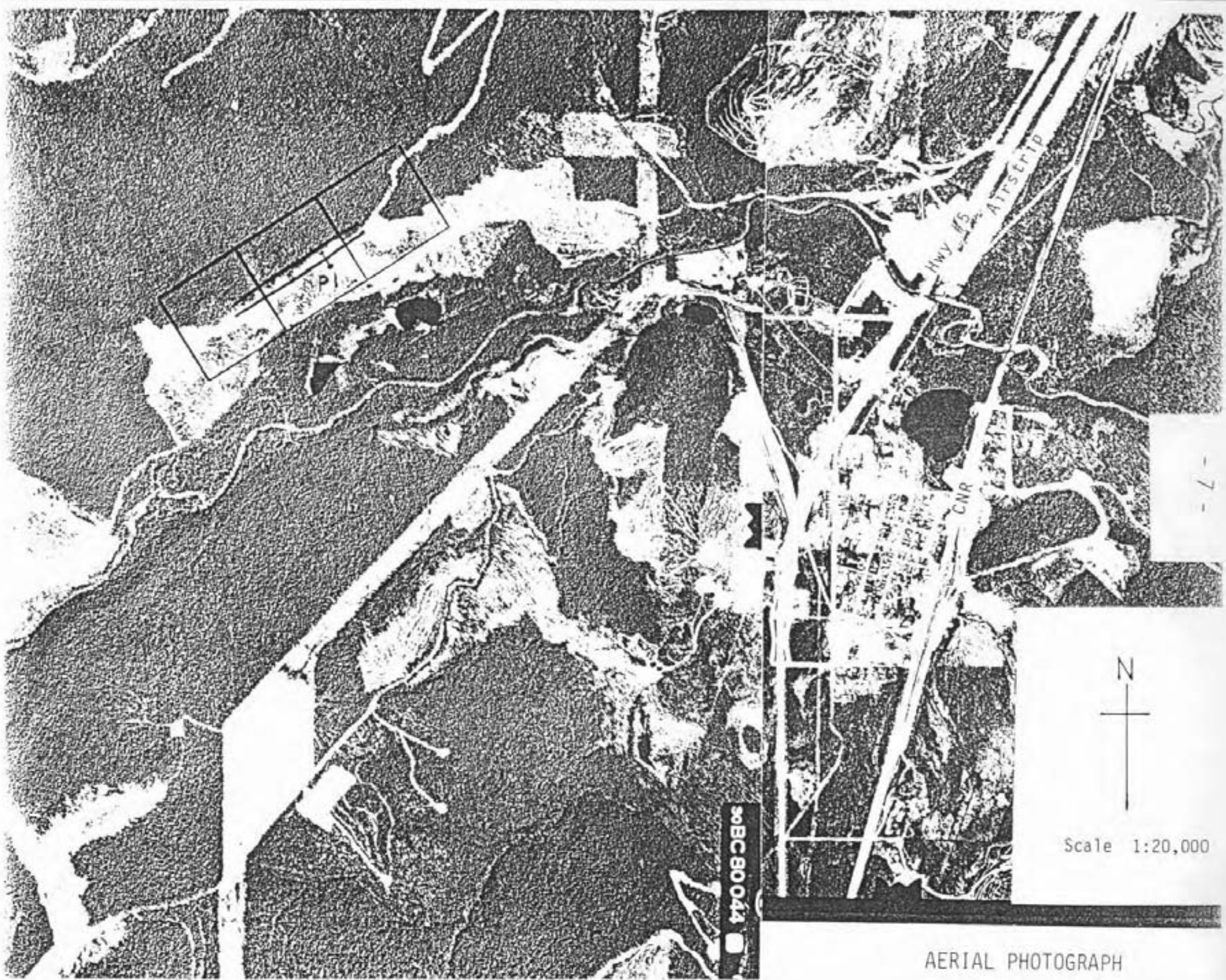
# DIAMOND DRILLHOLE LOG

DIAMOND DRILLHOLE LOG				COMPANY		PROPERTY NAME			HOLE NO.	PAGE		
DRILLING COMPANY		COLLAR ELEV.	BEARING OF HOLE	TOTAL DEPTH		LOCATION OF HOLE			84-P1	2		
DATE STARTED		DATE COMPLETED	DATE LOGGED	DIP OF HOLE AT COLLAR					PROJECT NO.			
				AT					LOGGED BY			
DEPTH		VISUAL QUALITY	DESCRIPTION	Sample Number	Sample	Interval	Sample					
From	To				From	To	Length					
Metres	Metres				Metres	Metres	Metres					
26.2	27.1		Biotite gneiss: Black, coarse grained.									
27.1	40.0	Excellent	Pegmatite: Uniform, massive, white, unstained and unbroken; quartz-feldspar-muscovite pegmatite with traces of garnet, biotite, magnetite, zircon and tourmaline (?). Some poorly developed graphic granite intergrowths.	P1-5	27.1	33.6	6.4	.069	15.5	1.94	4.02	4.92
				P1-6	33.6	40.0	6.4	.084	13.8	1.57	3.85	3.95
40.0			End of hole.									
Drillcore storage: IMD Laboratories Ltd., 260 Lesmill Road Don Mills, Ontario M3B 2T5												



*G. R. Guillet*





PI

Hwy #5  
ATRstrip

CNR

7



Scale 1:20,000

96BC80044

AERIAL PHOTOGRAPH

## COST STATEMENT

- 8 -

PHIL'S DIAMOND DRILLING LTD.  
Comp. 239, 108 Ranch  
R.R. #1, 100 Mile House, B.C. V0K 2E0  
Phone 791-5414

May 31, 1984.

Morton Mica Resources Ltd.,  
560 Robin Hood Rd.,  
West Vancouver, B. C.  
V7S 1T3.

## Blue Feldspar Invoice

Hole #1

131 Ft.	@ \$17.50 per ft.	\$ 2,292.50
5 Cat hrs.	@ 45.00 per hr.	<u>225.00</u>
Total Invoice		2,517.50

## AUTHOR'S QUALIFICATIONS

**G. ROBERT GUILLET**

**B.A., M.A., P.Eng.**

**Specialist, Industrial Minerals**

**G. Robert Guillet M.A., P. Eng.**  
Consulting Geologist, Industrial Minerals

P.O. Box 370  
Mount Albert  
Ontario, Canada  
L0G 1M0  
Telephone (416) 473-2495

## Profile

Mr. Guillet has specialized in the Industrial Minerals field for more than 25 years. He has conducted exploration and drilling programs, product evaluation and marketing studies, on a wide variety of mineral commodities used by the construction, ceramic, and chemical industries. His positions with the Ontario Division of Mines and the Ontario Securities Commission have given him an appreciation of the special problems related to resource development and financing. He is the author of several dozen technical reports and papers, and has lectured on industrial minerals at McMaster University. He has been designated a specialist in industrial minerals by the Ontario Association of Professional Engineers.

## Experience

1950-1954	B.A., University of Toronto-Geological Sciences
1954-1961	Geologist-American Nepheline Limited (Indusmin Ltd.)
1962	M.A., University of Toronto-Geology
1961-1967	Ontario Department of Mines-Industrial Mineral Geologist
1967-1972	Ontario Department of Mines-Resident Geologist- Southern Ontario
1969-1972	Ontario Department of Mines-Chief Resident Geologist
1970-1972	Ontario Department of Mines-Executive Assistant to Deputy Minister
1971-1976	Commissioner, Ontario Securities Commission
1972-1973	Ministry of Natural Resources-Director, Mineral Resources Branch
1973-1980	Vice-President, Gartner Lee Associates Limited
1980	Specialist in Private Practice

## Affiliations

• Association of Professional Engineers of Ontario • Canadian  
Institute of Mining and Metallurgy •



A handwritten signature in cursive script that reads "G. R. Guillet".

