



**exploration ltd.**

GEOLOGY • GEOPHYSICS  
MINING ENGINEERING

Suite 214-850 WEST HASTINGS STREET, VANCOUVER, B.C.  
TELEPHONE (604) 681-0191 V6C 1E1

84-1123-12980  
9/85

GEOLOGICAL REPORT

on the

HOPE PROSPECT

(HOPE 2 to 9 CLAIMS)

Slocan Mining Division - British Columbia

Lat.  $49^{\circ} 44'N$ .

Long.  $117^{\circ} 25'W$ .

**GEOLOGICAL BRANCH**  
N.T.S. 82W **ASSESSMENT REPORT**

for

**12,980**

CHAPLEAU RESOURCES LTD.

by

Donald G. Allen, P. Eng., (B. C.)

November 28, 1984

Vancouver, B. C.

## TABLE OF CONTENTS

SUMMARY	1
CONCLUSION	2
RECOMMENDATION	3
ESTIMATED COSTS OF RECOMMENDATION	5
INTRODUCTION	6
LOCATION, ACCESS, PHYSIOGRAPHY	6
CLAIMS	7
HISTORY	8
GEOLOGY	9
Regional Geology	9
Property Geology	9
Development	10
MINERALIZATION	11
REFERENCES	
CERTIFICATE	

## TABLE

Table 1	Rock Sample Descriptions	After p. 13
---------	--------------------------	-------------

## ILLUSTRATIONS

Figure 1	Location Map	1:10,000,000	After p. 6
Figure 2	Access Map	1:250,000	After p. 6
Figure 3	Claim Map	1:50,000	After p. 7
Figure 4	Claim, Geology and Sample Sites	1:10,000	After p. 10
Figure 5	Underground Workings, Geology, & Sample Sites	1:500	After p. 11

## APPENDICES

Appendix I	Analytical Results
Appendix II	Affidavit of Expenses

## SUMMARY

Chapleau Resources Ltd. holds the Hope property, comprising 26 claim units, in the Slocan Mining camp of south central British Columbia. The property is situated six kilometres southwest of Slocan and 47 kilometres north-northeast of Castlegar and is accessible by road.

The Hope claims are underlain by porphyritic granodiorite of the Nelson batholith and two roof pendants of metasedimentary and metavolcanic rocks. Skarn-type zinc-lead-silver mineralization occurs in one of the roof pendants along its contact with granodiorite.

The Hope prospect is developed by 177 metres of underground workings in four adits and has a recorded past production of 525 tons grading 15% zinc, 4.7% lead and 3.8 ounces per ton silver. Recent sampling indicates the presence of a modest tonnage of readily mineable ore in the 3000 tonne range grading 15.6% zinc, 6.2% lead and 6.1 ounces per ton silver (a value of \$305 per tonne at current metal prices).

In 1984, Chapleau Resources conducted a program of prospecting, road planning and layout, and preliminary sampling. This work indicated (1) that the favourable roof pendant is at least 200 to 300 metres in diameter and (2) lower grade zinc-lead-silver mineralization also occurs disseminated along certain beds in metaquartzites elsewhere in the same

roof pendant.

A follow-up program of geological, geochemical and geophysical surveys, road construction and possibly diamond drilling and mining is proposed.

#### CONCLUSION

A modest tonnage (3000  $\pm$  tonnes) of high grade zinc-lead-silver ore is present on the Hope property. This material is readily mineable by open pit methods once a haulage road is constructed from the logging road at lower elevations on the property to the workings. An attempt should be made to mine this material and ship it to a custom mill or possibly Cominco's smelter in Trail. Estimated gross value using current metal prices is \$305 per tonne. Should a market be found, then mining this material could at least cover the cost of building an access road.

Lead-zinc-silver mineralization occurs elsewhere throughout the roof pendant, but because slopes are heavily forested, the extent of mineralization is not known. A program of geological, geochemical and geophysical surveys is warranted to evaluate the potential of the entire roof pendant.

An attempt should be made to locate the First Thought showing. A sample from this showing contained significant gold and silver values (0.03 and 3.9 ounces per ton, respectively) as reported by O'Grady (1927).

## RECOMMENDATION

A two-stage exploration program is recommended to evaluate the Hope prospect. Stage I is as follows:

- (a) a 4-wheel drive road should be constructed to the Hope prospect;
- (b) the extent of the roof pendant should be defined by geological mapping;
- (c) geochemical soil sampling over the pendant should be undertaken in the vicinity of the known mineralization;
- (d) geophysical surveys - VLF electromagnetic and magnetic surveys should be undertaken in the vicinity of the known mineralization to outline the potential distribution of high grade and to locate any other possible high grade zones;
- (e) to facilitate the geochemical and geophysical surveys, a flagged grid should be established over the entire area of interest;
- (f) marketing studies should be made to determine whether or not some of the custom mills in the Slocan area or possibly Cominco's smelter in Trail will accept the Hope ore.

Should results of Stage I be positive, and a market found for the high grade ore, then a Stage II program consisting of the following should be undertaken:

- (a) diamond drilling any geophysical targets in the vicinity

of the known workings;

- (b) the access road should be upgraded to a haulage road; and,
- (c) mining the high grade zone should be carried out.

*Donald S. Allen*

# ESTIMATED COSTS OF RECOMMENDATION

Stage I Geological mapping, geochemical sampling,  
geophysical surveys, road construction.

## Salaries

Geologist	1 man mo. @ \$6,000	\$ 6,000
3 assistant-labourers	3 man mos. @ \$4,000	12,000
Room and board	120 man days @ \$35	4,200
Geochemical Analyses and Assays		4,000
Vehicle rental		1,000
Magnetometer - VLF-EM rental		1,500
Bulldozer rental	200 hrs. @ \$80	16,000
Material and supplies		1,000
Government fees and bond		2,000
Report and maps		2,000
		<hr/>
		\$49,700
	Contingencies	5,300
		<hr/>
		\$55,000

Stage II Costs for this stage have not been estimated.  
Follow-up work will depend on results of Stage I.  
Road upgrading, diamond drilling and possibly  
mining of the high grade zone will be considered.

## INTRODUCTION

Chapleau Resources Ltd. holds the Hope group of claims, comprising 26 claim units. The claims are in the southern part of the Slocan mining camp. They cover a skarn-type zinc-lead-silver prospect in a roof pendant of metasedimentary rocks in the Nelson batholith. The property is developed by 177 metres of underground workings in four adits and a glory hole. Recorded past production from the property is 525 tons grading 15% zinc, 4.7% lead and 3.8 ounces per ton silver.

This report summarizes results of a two-day property examination carried out by the writer on September 3 and 4, 1984. The writer was assisted by C. Kennedy, M. Best, J. Moreau, and D. Martin of Chapleau Resources Ltd. A base map at 1:10,000 scale was prepared from maps supplied by Slocan Forest Products Ltd.

## LOCATION, ACCESS, PHYSIOGRAPHY

The Hope property is situated six kilometres southwest of Slocan and 47 kilometres north northwest of Castlegar, British Columbia (Figure 1). The property lies on Cameronian Creek, a tributary of Chapleau Creek which in turn flows into Lemon Creek and Slocan River (Figure 2). Access is by Highway 6 from Nelson or Castlegar to Lemon Creek and thence by good logging road to the junction of



CHAPLEAU RESOURCES LTD.  
HOPE PROPERTY  
LOCATION MAP

SCALE 200 0 200 KILOMETRES  
100 0 100 MILES

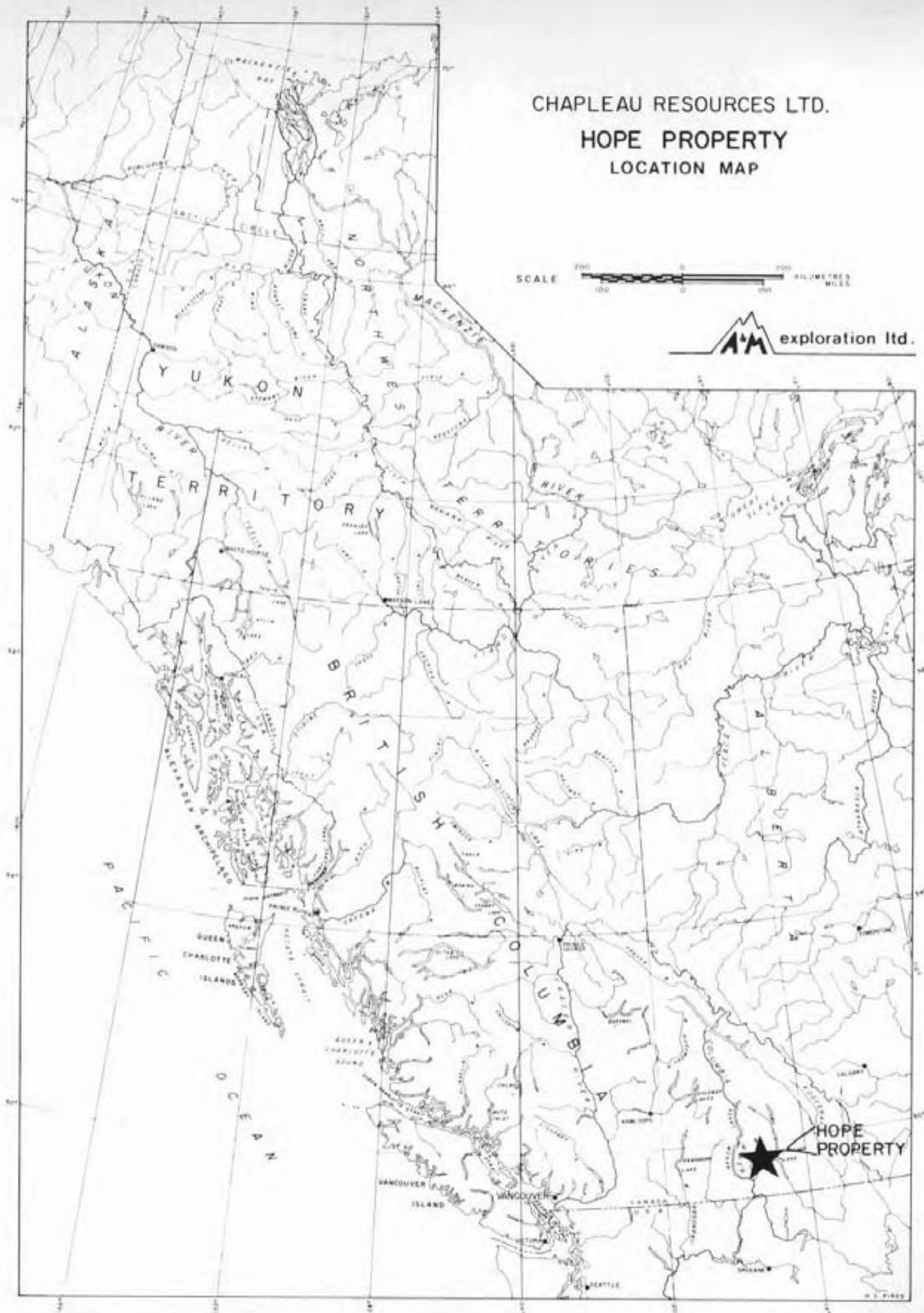
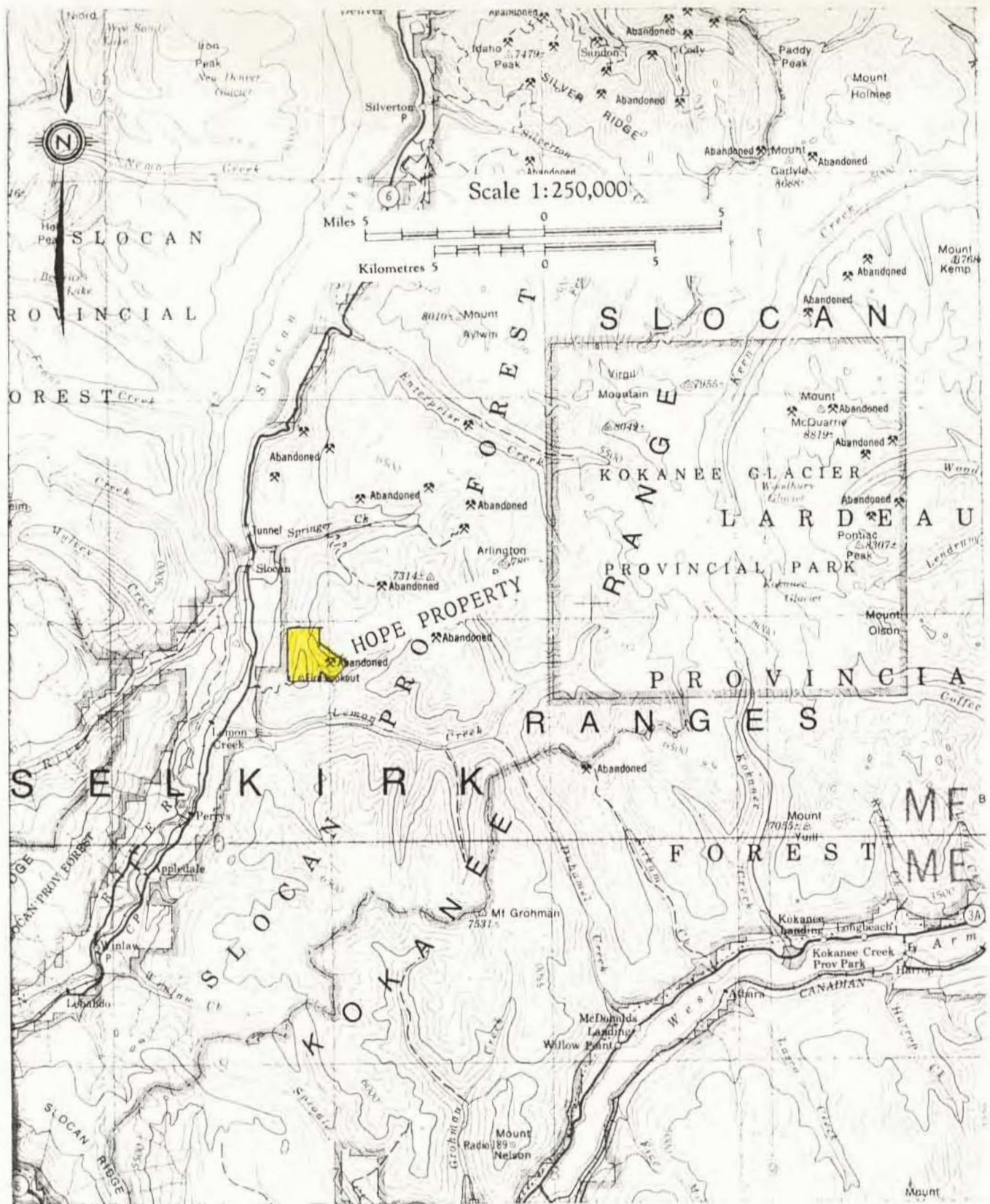


FIGURE - 1



CHAPLEAU RESOURCES LTD.

N.T.S. 82F

## ACCESS MAP

HOPE PROPERTY

Slocan Mining Division - British Columbia



exploration Ltd

Figure 2

Chapleau and Cameronian Creeks. A good trail leads up to the underground workings on the Hope prospect at an elevation of 1450 metres.

The property is in the Kokanee Mountain Range. Topography is moderately steep in the claim area and elevations range from 900 to 1700 metres. Slopes are covered with a virgin growth of Douglas fir, larch, white pine, and Jack pine with a light underbrush of alder, willow and huckleberry.

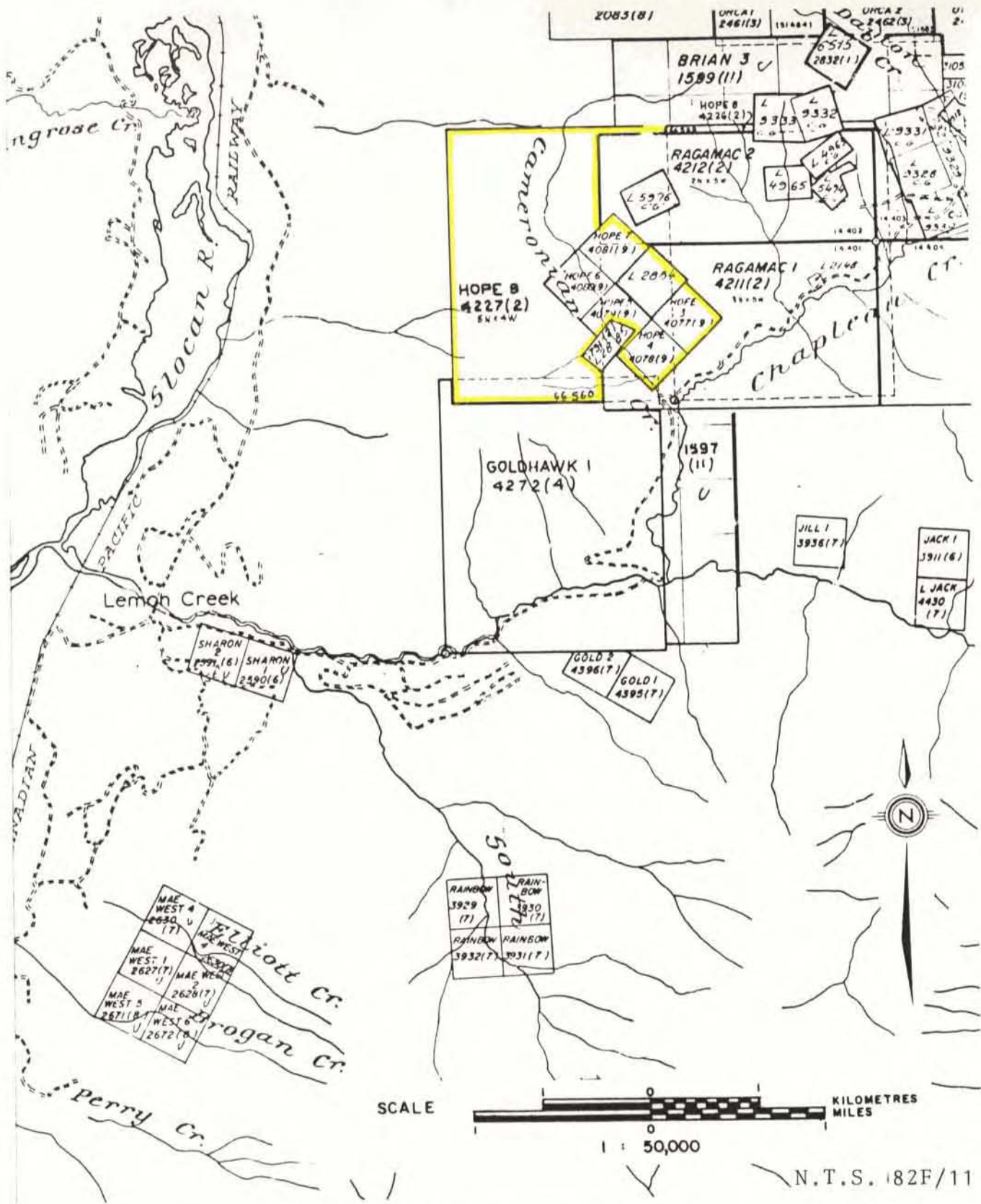
#### CLAIMS

The Hope property comprises 26 claim units (Figure 3) as follows:

<u>Claim Name</u>	<u>Record Number</u>	<u>Type</u>	<u>Expiry Date</u>
Hope 2	Lot 2084	Crown Grant	
Hope 3	4077	2-post	September 19, 1985
Hope 4	4078	"	September 19, 1985
Hope 5	4079	"	September 19, 1985
Hope 6	4080	"	September 19, 1985
Hope 7	4081	"	September 19, 1985
Hope 9	4227	Modified Grid (20 Units)	February 15, 1985

The claims are held by Chapleau Resources Ltd.





CHAPLEAU RESOURCES LTD.

## CLAIM MAP

HOPE PROPERTY

Slocan Mining Division - British Columbia



*Donald S. Allen*  
exploration Ltd.

## HISTORY

The history of the property as summarized by Little (1960) is as follows:

"The property was not productive during the period of early development, from 1898 to 1901. In 1927 it was acquired by Piedmont Mines, Limited, who extended the underground workings in an effort to delineate the deposits and they installed an aerial tramway and mill. In 1928 and the early part of 1929 nearly 500 tons of ore was mined and treated before the mine and mill were shut down. In 1948 and 1951, 25 and 12 tons of ore respectively were shipped by lessees.

In the period 1928 to 1951 inclusive, 525 tons of ore was produced, yielding 156,477 pounds zinc, 50,216 pounds lead, and 1,984 ounces silver. The property was examined in July 1950, by A.B. Irwin of the Geological Survey."

The property was examined and sampled by Caldwell (1949) for the Consolidated Mining and Smelting Co. Reserve calculations by the company suggest a potential of about 143,00 tons grading 17.9% zinc, 7.9% lead and 17.4% zinc (Anonymous memo for Consolidated Mining and Smelting Ltd. dated 1966).

## GEOLOGY

### Regional Geology

The Hope property is in the Nelson map-area of Little (1960). Most of the area is underlain by granitic and related rocks of the Jurassic to Cretaceous Nelson batholith and its satellites. Rocks of the Shuswap Metamorphic Complex lie to the west (three kilometres on the west side of the Slocan River). Triassic and Jurassic sedimentary rocks of the Slocan and Milford Groups occur to the north and south of the Nelson batholith (forming an arcuate belt of rock comprising the Kootenay Arc), and also occur as scattered roof pendants throughout the batholith.

The Hope property is one of about 40 mineral deposits which form the south part of the Slocan Mining camp, and which generally lie east of Slocan City between Enterprise and Lemon Creeks. These deposits are mainly zinc-lead-silver deposits but some contain appreciable amounts of gold. Most are fissure veins which are hosted by Nelson plutonic rocks.

### Property Geology

The Hope property is underlain mainly by granodiorite of the Nelson batholith. The most abundant phase is a coarse-grained granodiorite containing scattered orthoclase phenocrysts up to three centimetres long. Gneissic phases predominate in the southeastern part of the property.

Narrow pegmatite dikes are common in the granodiorite.

A roof pendant of siltstone and quartzite, presumably belonging to the Milfor Group, outcrops on the east side of Cameronian Creek (Figure 4). The skarn deposits in the Hope prospect were probably derived from contact metasomatism of limestone beds within the quartzites. The quartzite is black and argillaceous and commonly contains disseminated pyrrhotite and pyrite. The contact of the roof pendant with the granodiorite is marked by a sinuous fault that generally strikes north and dips 45 to 70 degrees to the west. The areal dimension of the roof pendant is not known, but preliminary mapping indicates that it is at least 500 metres in diameter.

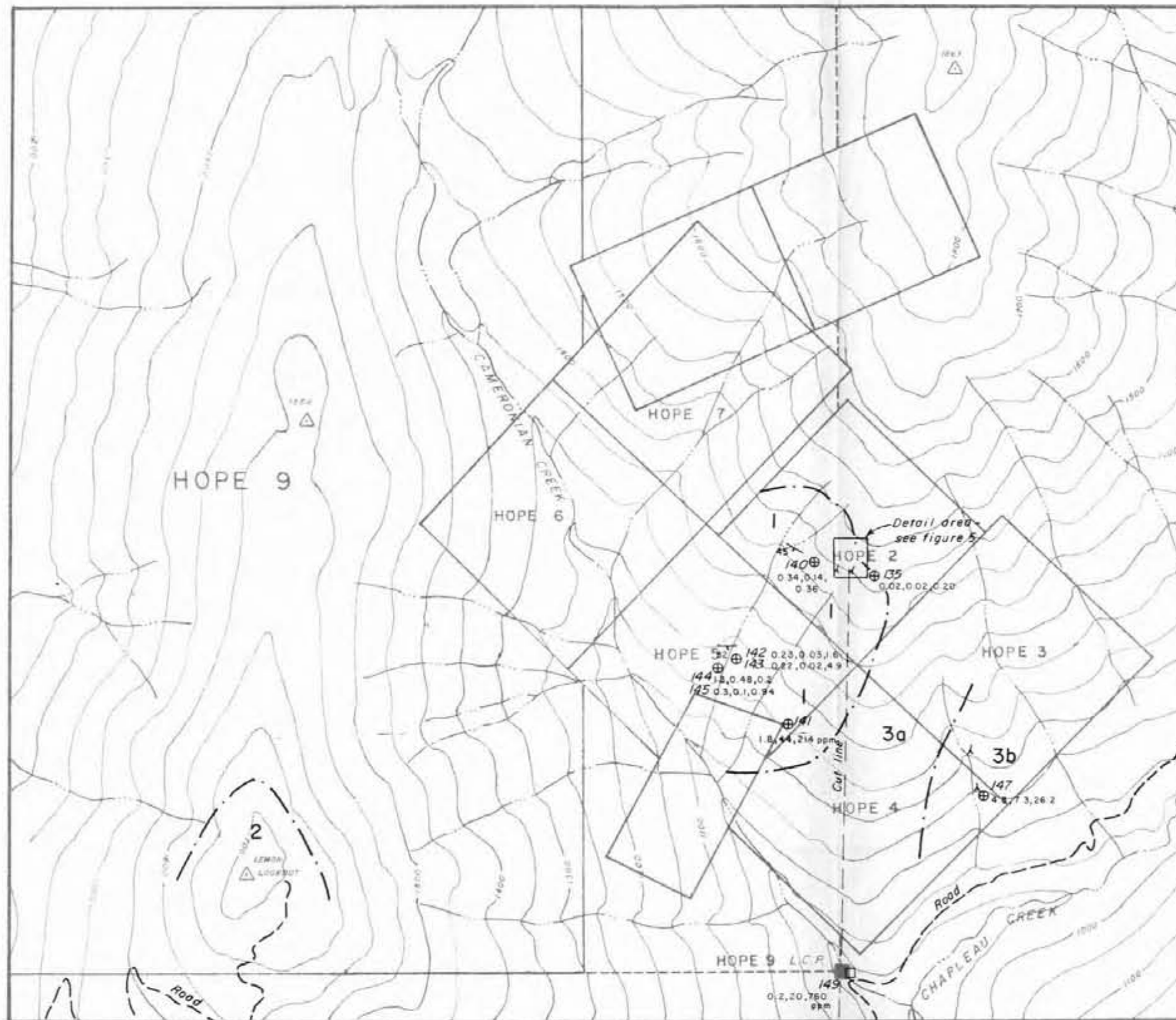
A second roof pendant of the Rossland Formation volcanic rocks is indicated by Little (1960) to outcrop on the southern part of the ridge on the Hope 9 claim.

#### Development

Workings on the Hope prospect comprise several trenches, 177 metres of underground workings, and a glory hole about 10 metres in diameter from which production has amounted to about 500 tons. A camp near the workings, and an aerial tram, were constructed by Piedmont Mines 1928.

In addition, scattered trenches and two short adits occur on the Hope 3 to 5 claims.





N.T.S. 82 F / 11



## LEGEND

NELSON BATHOLITH

- 3 3a Porphyritic granodiorite
- 3b Gneissic granodiorite

ROSSLAND FORMATION

- 2 Volcanic rocks

SLOCAN GROUP

- 1 Quartzite, argillaceous quartzite.

## SYMBOLS

147 4.3, 6.3, 26.2  
Rock sample site, sample number, oz/ton Ag, % Pb, % Zn except where noted in ppm.

Adit

Bedding

Claim boundary

Geological contact

SCALE 300 0 300 METRES  
1000 0 1000 FEET  
1:10,000

CHAPLEAU RESOURCES LTD.

HOPE PROSPECT

CLAIMS, GEOLOGY & SAMPLE SITES

*Donald P. Allen*  
A.M. exploration ltd

Nov. 30, 1984

Figure 4



## MINERALIZATION

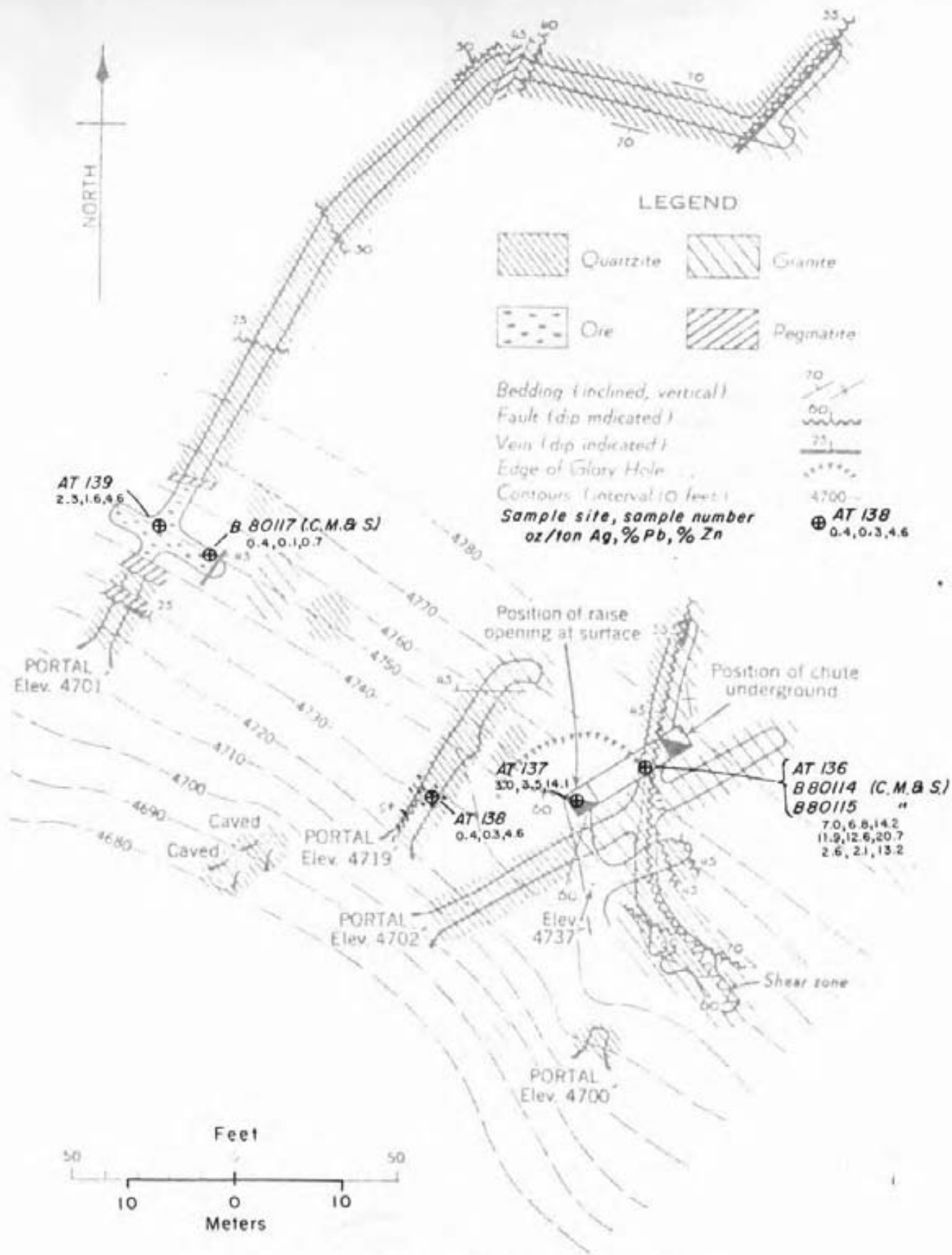
The main workings on the Hope prospect are on a skarn zone which presumably developed by metasomatism of limestone beds, in quartzite, near their contact with granodiorite. Mineralization consists of garnet, diopside and calcite, with disseminations, clots, and bands of pyrrhotite, sphalerite and galena.

The sulfides are massive in the glory hole area (Figure 5) and appear to form a lenticular mass 20 metres in diameter by 3 metres thick, suggesting a possible mass of about 3300 tonnes. This high grade mineralization has returned the following assays (Figure 5 and Appendix 1):

<u>Sample No.</u>	<u>Ag oz/ton</u>	<u>Pb%</u>	<u>Zn%</u>
B80114 (Caldwell)	11.9	12.6	20.7
B80114 (Caldwell)	2.6	2.1	13.2
AT 136 (This study)	7.0	6.8	14.2
AT 137   "   "	3.0	3.5	14.1
Average	6.1	6.2	15.6

At current prices (\$9.00 per ounce silver, \$0.59 per pound zinc and \$0.31 per pound lead) a value of \$305 per tonne (metric ton) is indicated. Because of a moderately steep slope, this material could be readily mined by open pit methods after construction of an access and haulage road.

Lower grade zinc-lead-silver mineralization occurs over widths of 2 to 2.5 metres in adits 1 and 3.



CHAPLEAU RESOURCES LTD.

HOPE PROSPECT

UNDERGROUND WORKINGS, GEOLOGY, & SAMPLE SITES

Modified after Little (1960)

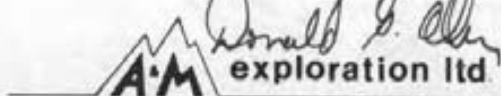


Figure 5

Grades are as follows:

<u>Sample No.</u>	<u>Ag oz/ton</u>	<u>Pb%</u>	<u>Zn%</u>
B80117 (Caldwell	0.4	0.1	2.7
AT 139 (This study)	0.4	0.3	4.6
AT 139     "     "	2.3	1.6	4.6
Average	1.0	0.7	4.0

At current metal prices, a value of \$66.60 per tonne is indicated and hence is currently sub-economic.

Sphalerite, galena and pyrite occur over a length of at least 50 metres and width of 2-3 metres about 500 metres southwest of the Hope prospect. Mineralization occurs as irregularly distributed seams and disseminations in quartzite. Five samples from this zone assayed 0.22 to 1.32 oz/ton silver, 0.1 to 0.48% lead, 0.2 to 4.88% zinc, and 0.001 oz/ton gold. Anomalous molybdenum and copper were noted in the two samples selected for geochemical analyses. This showing may or may not be the First Thought showing as described by O'Grady (1927) who reported an assay with significant gold and silver values over a width of 14 feet (0.03 oz/ton gold, 3.9 oz/ton silver, 2.3% lead and 3% zinc). Further prospecting is required to locate this zone.

A narrow shear zone occurs on the Hope 3 claim. This zone is 20 to 30 centimetres wide, trends east-west and dips steeply and locally contains galena and sphalerite. It is developed by a short crosscut and drift. A grab

sample of selected material from the dump assayed 4.32  
oz/ton silver, 7.29% lead and 26.2% zinc.

Donald E. Allen

TABLE I

ROCK SAMPLE DESCRIPTIONS

242 AT	135	Diopside-garnet skarn - chip sample across 2 metres in easternmost trench.
	136	Massive sphalerite, pyrrhotite, minor galena - chip sample across 4 metres from glory hole.
	137	As above across 2 metres.
	138	Skarn with disseminated clots sphalerite from Tunnel 3.
	139	Quartz-diopside-garnet skarn with abundant pyrrhotite and sphalerite - chip sample taken across 2.5 metres.
	140	Intensely pyritized siltstone and quartzite from camp area.
	141	Quartzite with abundant disseminated pyrrhotite - from old pit.
	142	Quartzite with abundant pyrite and minor sphalerite - chip sample over 5 by 2 metres.
	143	Quartzite as above over 2 metres wide.
	144	Quartzite as above over 1 metre wide.
	145	Quartzite as above over 2 metres wide.
	147	Grab sample - sphalerite and galena from dump on Hope 3 claim.

## REFERENCES


- Archibald, D.A., Glover, J.K., Price, R.A., Farrar, E., and Carmichael, D.M. (1983). Geochronology and Tectonic Implications of Magmatism and Metamorphism, Southern Kootenay Area and Neighboring Regions, Southeastern B.C. Can. Jour. Earth Sciences, Vol. 20, pp. 1891-1913.
- Caldwell, E.H. (1949). Piedmont Groups (Hope No. 2). Private Report for Consolidated Mining and Smelting Co.
- Langley, A.C. (1928). Piedmont in B.C. Department of Mines Ann. Rept. for 1928, p.p. 295-296.
- Little, H.W. (1960). Nelson Map-Area, West Half. Canada Geol. Survey Memoir 308.
- O'Grady, B.T. (1927). Hope No. 2 in B.C. Department of Mines Ann. Rept. for 1927, p. C277.

# CERTIFICATE

I, Donald G. Allen, certify that:

1. I am a Consulting Geological Engineer, of A & M Exploration Ltd., with offices at #214 - 850 West Hastings Street, Vancouver, British Columbia.
2. I am a graduate of the University of British Columbia with degrees in Geological Engineering (B.A.Sc., 1964; M.A.Sc., 1966).
3. I have practised my profession of exploration geologist since 1964 to present in British Columbia, the Yukon, Alaska and various parts of the Western United States.
4. I am a member in good standing of the Association of Professional Engineers of British Columbia.
5. This report is based on fieldwork carried out by the writer on September 3 and 4, 1984 and on information listed under References.
6. I hold no interest, nor do I expect to receive any, in the HOPE claims or in Chapleau Resources Ltd.
7. I consent to the use of this report in a Statement of Material Facts or in a Prospectus in connection with the raising of funds for the project covered by this report.

November 28, 1984  
Vancouver, B. C.

  
Donald G. Allen,  
P. Eng.

APPENDIX I  
Analytical Results



# ROSSBACHER LABORATORY LTD.

## CERTIFICATE OF ANALYSIS

2225 S. SPRINGER AVENUE  
BURNABY, B.C. V5B 3N1  
TEL : (604) 299 - 6910

TO : A&M EXPLORATION LTD.  
214-850 W. HASTINGS STREET  
VANCOUVER, B.C.  
PROJECT No.: 84-242

CERTIFICATE No.: 84382.X - 1  
INVOICE No.: 4439  
DATE ANALYSED: SEPT. 20, 1984  
FILE NAME: A&M382.X

PRE			oz/t	oz/t	%	%
FIX	SAMPLE NAME		Au	Ag	Pb	Zn
A	242 AT 135		0.001	0.02	0.02	0.20
A	AT 136		0.001	7.00	6.84	14.20
A	AT 137		0.001	3.00	3.48	14.10
A	AT 138		0.001	0.40	0.30	4.56
A	AT 139		0.001	2.28	1.56	4.60
A	AT 140		0.001	0.34	0.14	0.36
A	AT 143		0.001	0.22	0.02	4.88
A	AT 144		0.001	1.32	0.48	0.20
A	AT 145		0.001	0.34	0.10	0.94
A	242 AT 147		0.001	4.32	7.28	26.20

CERTIFIED BY :

*J. Rossbach*

# ROSSBACHER LABORATORY LTD.

2225 S. SPRINGER AVENUE  
BURNABY, B.C. V5B 3N1  
TEL : (604) 299 - 6910

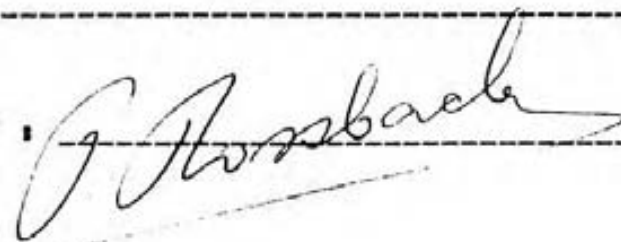
## CERTIFICATE OF ANALYSIS

TO : A&M EXPLORATION LTD.  
214-850 W. HASTINGS STREET  
VANCOUVER, B.C.  
PROJECT No.: 84-242

CERTIFICATE No.: 84382 - 1  
INVOICE No.: 4440  
DATE ANALYSED: SEPT. 7, 1984  
FILE NAME: A&M382

PRE FIX	SAMPLE NAME	PPM Mo	PPM Cu	PPM Ag	PPM Zn	PPM Pb	PPB Au	PPM As
L	242 AL 130	1	24	0.4	56	24	10	16
L	242 AL 149	1	20	0.2	760	20	10	4
A	242 AT 121	1	54	2.6	318	740	10	8
A	122	1	10	0.4	98	40	10	20
A	123	1	60	0.2	70	52	10	32
A	124	1	74	0.4	104	244	10	60
A	125	1	136	0.4	22	18	10	24
A	126	1	136	0.2	18	14	10	20
A	127	1	42	0.6	22	8	10	30
A	128	1	54	0.6	12	10	10	12
A	129	1	284	0.2	92	22	10	28
A	242 AT 131	1	56	19.2	50	1610	720	86
A	132	1	72	0.6	24	30	520	2
A	133	1	6	0.2	14	6	10	10
A	134	1	14	0.2	22	28	10	2
A	141	46	162	1.8	214	44		
A	242 AT 142	52	270	7.8	16200	286		

CERTIFIED BY :



**ROSSBACHER LABORATORY LTD.**

2225 S. SPRINGER AVENUE  
BURNABY, B.C. V5B 3N1  
TEL : (604) 299 - 6910

**CERTIFICATE OF ANALYSIS**

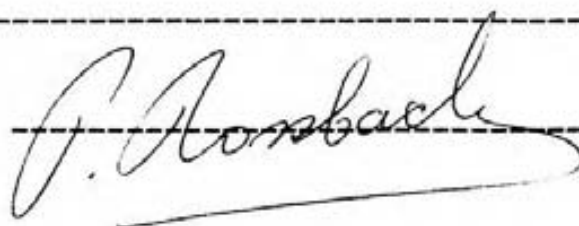
TO : ASM EXPLORATION LTD.  
214-850 W. HASTINGS STREET  
VANCOUVER, B.C.

PROJECT No.: 84-242

CERTIFICATE No.: 84382 - 2  
INVOICE No.: 4440  
DATE ANALYSED: SEP 17, 1984  
FILE NAME: A&M382

PRE FIX	SAMPLE NAME	PPM Mo	PPM Cu	PPM Ag	PPM Zn	PPM Pb	PPB Au	PPM As
A	242 AT 141	46	162	1.8	214	44		
A	142	52	270	7.8	16200	286		
L	242 AT 149	1	20	0.2	760	20	10	4

CERTIFIED BY :



APPENDIX II  
Affidavit of Expenses

AFFIDAVIT OF EXPENSES

This will certify that labour, geological mapping, and geochemical sampling were carried out on the Hope group of claims, Lemon Creek area, Slocan Mining Division, British Columbia, during the period September 20, 1983 to September 3, 1984, to the value of the following:

Labour and fieldwork carried out by C. Kennedy, D. Martin, J. Moreau, G. Elsen and M. Best, regarding road planning and layouts, and prospecting during the period September 20, 1983 to September 3, 1984.

Total value (as outlined on the following page)	\$4,015.00
--	------------

Mobilization and fieldwork (D. G. Allen)

Engineering fees	
D. G. Allen    3.0 days @ \$400	1,200.00
Geochemical analyses and assay	268.76

Report Preparation and draughting

Engineering fees	
D. G. Allen    2.0 days @ \$400	800.00
Maps, photocopying	54.50
Typing, draughting, compilation	
32 hours @ \$18.50/hour	592.00

\$6,930.26



Donald G. Allen,  
P. Eng. (B. C.)

Don Allen

As requested, the following is a breakdown of the work preformed on the Hope properties in the Slocan Valley.

We will require a geologists report on this group of claims as part of our 1984 assessment work for the Ministry of Mines.

Please forward the final report to Vagn as soon as possible as well as a copy to Craig in Cranbrook.

September 20, 1983	2 mandays	1 vehicle day
September 21, 1983	2 mandays	1 vehicle day
September 22, 1983	2 mandays	1 vehicle day

6 mandays at \$150.00 per day = Total \$900.00

3 vehicle days at \$55.00 per day = Total \$165.00

#### Work Preformed

- Negotiation with Slocan Forest Products regarding location of proposed access road. This road will be constructed in a location and on a grade that will provide access for both forest development as well as our needs to access the Hope properties.
- Study of air photos, contour maps and mapping of a map location for the proposed road.
- Ground layout and flagging of road

TOTAL COST = \$1,065.00

April 20, 1984	1 manday	1 vehicle day
July 13, 1984	2 mandays	1 vehicle day
July 14, 1984	2 mandays	1 vehicle day
July 15, 1984	2 mandays	1 vehicle day
August 4, 1984	1 manday	1 vehicle day
August 5, 1984	1 manday	1 vehicle day

9 mandays at \$150.00 per day = Total \$1350.00  
6 vehicle days at \$55.00 per day = Total \$ 330.00

Work Preformed

- General prospecting, tracing of sediments and mineralization on properties to the west and south of the Hope #2 Crown Grant.

TOTAL COST =\$1,680.00

September 2, 1984	3 mandays	2 vehicle days
September 3, 1984	4 mandays	2 vehicle days

Work Preformed

- Two days spent with geologist on Hope properties

TOTAL COST =\$1,270.00

Note:

This report does not include your time or any of the assay costs you may have incurred.

TOTAL COST =\$4,015.00