

84-#976-13052

ASSESSMENT REPORT
GEOCHEMICAL SURVEY
ON THE
SB GROUP OF MINERAL CLAIMS
N.T.S. 82E/1W

*Sailor Bay
Shine shuck*

49°09'N Latitude 118°29'W Longitude

GREENWOOD MINING DIVISION

GEOLOGICAL BRANCH
ASSESSMENT REPORT

13,052

John Keating
Noranda Exploration Company, Limited
(No Personal Liability)

August 6-7th, 1984

TABLE OF CONTENTS

	<u>PAGE</u>
1. INTRODUCTION	1
2. LOCATION AND ACCESS	1
3. TOPOGRAPHY	1
4. CLAIM INFORMATION	1
5. GEOCHEMICAL SURVEY	2
5.1 Introduction	2
5.2 Control	2
5.3 Sampling Method	2
5.4 Laboratory Analytical Method	2
5.4.1 Preparation	2
5.4.2 Analysis	2
5.5 Presentation of Results	3
5.6 Discussion of Results	3
6. SUMMARY AND RECOMMENDATIONS	4

APPENDICES

Appendix 1	Soil Geochem Results
Appendix 11	Statement of Costs
Appendix 111	Statement of Qualifications

DRAWINGS

Drawing 1	Zinc Geochem
Drawing 2	Au, Ag, Cu, Pb, Mo Geochem

1. INTRODUCTION

The SB claim group consisting of the Sailor Boy and Shickshock claims, is owned and currently being operated by Noranda Exploration Company, Limited (No Personal Liability), situated at 1050 Davie Street, Vancouver, B.C.

During August 6th and 7th. 1984, a 1.9 km flagged grid was constructed and 68 soil samples were collected. All soils were analyzed for ppm Cu, Pb, Ag, Zn, Mo and ppb Au.

2. LOCATION AND ACCESS

The SB group of mineral claims are located approximately 14 km north of Grandforks, B.C. within N.T.S. mapsheet 82E/lW. They are centered on longitude 118°29' and latitude 49°09' within the Greenwood Mining Division.

Access is good by following the Granby River Road north for some 14 km. Then head west on the Brown Creek Road, for approximately 1 km, until arriving at a non-cultivated open field. Follow an old wagon road across the field and up the hill until 100 metres before its' end. From this point it is a 400 metre hike south, across the railroad tracks, to the north boundary of the claims.

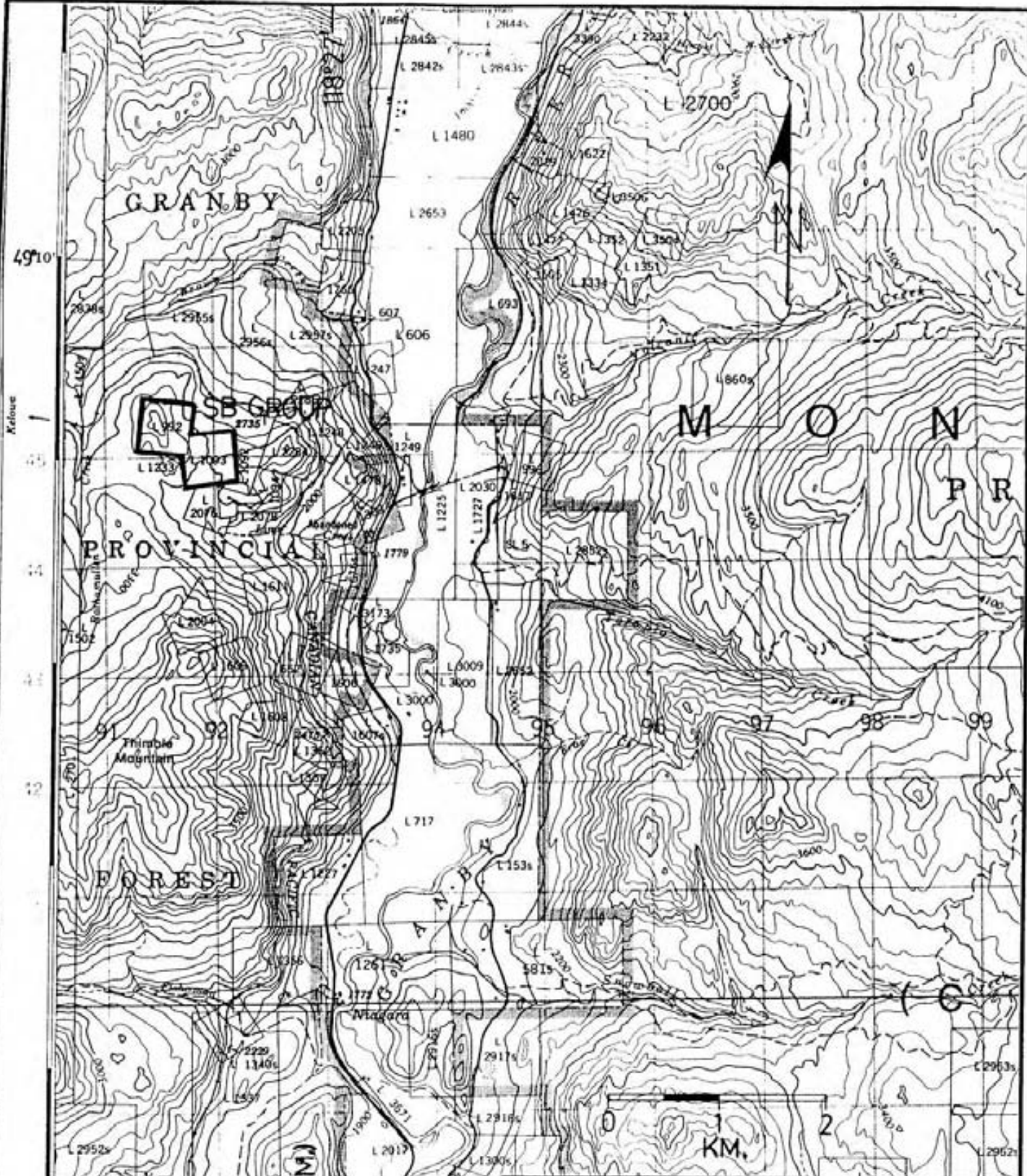
3. TOPOGRAPHY

The SB group of claims are situated on moderate to gentle sloping terrain with a maximum relief of 125 m. and a maximum elevation of 1006 m. on the Shickshock claim. The grid, located in a topographically low area, appears to be sparse in rock exposure.

4. CLAIM INFORMATION

The claims are owned and currently being operated by Noranda Exploration Company, Limited (No Personal Liability).

<u>Claim Name</u>	<u>Record Number</u>	<u>Record Date</u>
Sailor Boy	36732	Aug. 8, 1973
Shickshock	36731	Aug. 8, 1973



REVISED	LOCATION MAP	
	SB CLAIM GROUP	
PROJ. No.	SURVEY BY: _____	DATE: _____
N.T.S. 82E1	DRAWN BY: _____	SCALE: 1:50,000
DWG. No.	NORANDA EXPLORATION OFFICE: VANCOUVER	

5. GEOCHEMICAL SURVEY

5.1 Introduction

As mentioned previously in the topographical section, the surveyed area contains little rock exposure. For this reason a geochemical survey was conducted with 68 soil samples being collected.

Soils were analyzed for parts per million (ppm) Silver, Copper, Lead, Zinc, Molybdenum and parts per billion (ppb) Gold at Noranda Exploration Company, Limited (No Personal Liability) laboratory, situated at 1050 Davie Street, Vancouver, B.C.

5.2 Control

For control a flagged metric grid was constructed, consisting of a 300 m base line which follows the Sailor Boy claims northern border. The base line commences at the Sailor Boy's north-east corner (rock cairn) and heads Az. 261°. Four 400 m wing lines spaced 100 m apart head due south with stations every 25 metres.

5.3 Soil Sampling Method

Soil samples taken at 25 metre intervals along wing lines, were obtained by digging holes with a maddock to a depth of 15 - 30 cm where the visible B horizon when ever possible was exposed. Samples were then placed in a "Hi Wet Strength Kraft 3 1/2" x 6 1/8" Open End" envelopes with the grid co-ordinates marked on the envelope with an indelible felt pen.

5.4 Laboratory Analytical Methods

5.4.1 Preparation

The soil samples were dried at approximately 80°C and then sieved with a -80 mesh nylon screen. The -80 mesh (0.18 mm) fraction is then used for geochemical analysis.

5.4.2 Analysis

Ag, Cu, Pb, Zn and Mo: 0.200 grams of -80 mesh material is digested in concentrated perchloric acid and nitric acid (3:1) at reflux temperature for 5.0 hours. A Varian-Techtron Model AA-5 or AA-475 Atomic Absorption Spectrophotometer is then used to determine the parts per million (ppm) silver, copper, lead, zinc and molybdenum in each sample.

Au: 10.0 grams of -80 mesh material is digested with aqua regia (one part nitric acid and 3 parts hydrochloric acid). The resulting solution is subjected to MIBK (Methylisobutyl Ketone) extraction, which extract is analyzed for parts per billion (ppb) gold using an AA-475 Atomic Absorption Spectrophotometer.

6 SUMMARY AND RECOMMENDATIONS

During August 1984 a geochemical survey was completed on the Sailor Boy claim of the SB group.

Sixty-eight soil samples were collected and analyzed for ppm. Ag, Cu, Pb, Zn, Mo and ppb Au.

Silver, copper, lead, molybdenum and the majority of gold analyses were low. With the exception of a singular slightly anomalous Au value of 140 ppb which may warrant further investigation.

Contoured zinc analyses delineated two open ended anomalous zones with maximum values ranging between 400 ppm and 520 ppm Zn. These zones which strike E-W and N-W to S-E may intersect or join to the west of the survey area. For this reason the existing grid and sampling should be extended to the west.

Also recommended is a detailed geological map of the grid and a follow-up geophysical survey (E.M. and mag) on delineated geochemical and/or geological targets.

APPENDIX I
SOIL GEOCHEM RESULTS

5.5 Presentation of Results

Geochemical soil results are presented in Appendix 1 as well as being plotted at 1:2,500 scale on Drawings 1 & 2.

<u>Drawing</u>	<u>Elements Plotted</u>
1	Zn, (ppm) contoured
2	Au, (ppb); Ag, Cu, Pb, Mo (ppm)

5.6 Discussion of Results

Silver, copper, lead and molybdenum analyses were generally low, ranging from (.2-1.2 ppm) Ag, (14-100 ppm) Cu, (2-44 ppm) Pb, and (<.2 ppm) Mo. These 4 elements are of little significance and have been presented on Drawing 2 without contours.

Also presented on Drawing 2 without contours are the gold analyses which are generally of detection limit (10 ppb) only, with the exception of the following 10 samples:

<u>Grid Station</u>		<u>Au Analysis (ppb)</u>
234+00E	223+00N	30
234+00E	223+75N	20
235+00E	223+00N	20
235+00E	223+50N	30
235+00E	224+75N	20
236+00E	221+50N	50
236+00E	221+75N	20
236+00E	222+00N	40
236+00E	224+50N	140
236+00E	224+75N	40

Of these 10 samples only one may be of interest, 236+00E 224+50N (140 ppb), as it is well above background and is also adjacent to a slightly elevated background sample of 40 ppb (236+00E, 224+50N).

Zinc analyses, ranging between 42 and 520 ppm, are plotted and contoured on Drawing 1. Two zones, A & B, were delineated and are mentioned below.

- ZONE A:** Narrow zone, approximately 50 metres wide, striking E-W with the possibility of being open ended or connecting up with Zone B to the west. Highest analysis is 520 ppm (236+00E, 223+75N).
- ZONE B:** Broad zone, cross-cutting the south-west corner of the grid. Strikes N-W to S-E and appears to be open ended to the west and south. Highest analysis is 480 ppm (235+00E, 221+00N).

NORANDA GEOCHEM LABORATORY

LOCATION GREENWOOD PROJECT 15 COLLECTOR JK DATE RECEIVED AUG/13/84 CODE 8408-05 SHEET 1

MATERIAL SOIL DATE ANALYSED AUG/21/84 ANALYST RF

REMARKS Cu, Zn, Pb, Ag, Mo in ppm. Au in ppb;

0.2g/2ml HClO₄ HNO₃ → 5ml

10g/Aqua Regia - MIBK/AA

T.T. NO.	SAMPLE NO.	Cu	Zn	Pb	Ag	Mo	Au							NTS*	GCI*
1														—	—
2	234E-221N	16	86	6	0.2	<2	10							82%W	5145%
3	-221.25	14	150	6	0.2	<2	10								
4	-221.5	26	240	20	0.2	<2	10								
5	-221.75	44	400	14	0.2	<2	10								
6	-222	36	380	8	0.2	<2	10								
7	-222.25	42	270	6	0.2	<2	10								
8	-222.5	44	380	8	0.2	<2	10								
9	-222.75	50	370	10	0.2	<2	10								
10	-223	48	370	8	0.2	<2	30								
1	-223.25	56	170	6	0.2	<2	10								
2	-223.5	48	230	14	0.2	<2	10								
3	-223.75	50	350	10	0.2	<2	20								
4	-224	36	90	8	0.2	<2	10								
5	-224.25	30	80	4	0.2	<2	10								
6	-224.5	24	94	4	0.2	<2	10								
7	-224.75	24	66	2	0.2	<2	10								
8	234E-225 N	16	110	2	0.2	<2	10								
9	235E-221 N	94	480	20	1.2	<2	10								
20	-221.25	52	370	6	0.4	<2	10								
1	-221.5	28	250	16	0.2	<2	10								
22	235E-221.75N	18	170	6	0.2	<2	10							↓	↓

22/8/84

NORANDA GEOCHEM LABORATORY

LOCATION GREENWOOD PROJECT 15 COLLECTOR JK DATE RECEIVED Aug / 13 / 84 CODE 8408-US1 SHEET 3
 MATERIAL SOIL DATE ANALYSED Aug / 21 / 84 ANALYST RF
 REMARKS Cu, Zn, Pb, Ag, Mo in ppm; Au in ppb;

T.T. NO.	SAMPLE NO.	Cu	Zn	Pb	Ag	Mo	Au						NTS#	GCI#
45	236E-223.25N	38	86	6	0.2	< 2	10						82 E/W	5455
6	-223.5	34	200	8	0.2	< 2	10							
7	-223.75	32	520	12	0.2	< 2	10							
8	-224	30	84	10	0.2	< 2	10							
9	-224.25	32	160	10	0.2	< 2	10							
50	-224.5	36	110	10	0.2	< 2	140							
1	-224.75	28	70	6	0.2	< 2	40							
2	236E-225N	38	68	10	0.2	< 2	10							
3	237E-221N	24	94	8	0.2	< 2	10							
4	-221.25	24	88	8	0.2	< 2	10							
5	-221.5	26	100	8	0.2	< 2	10							
6	-221.75	22	98	6	0.2	< 2	10							
7	-222	20	110	8	0.2	< 2	10							
8	-222.25	54	160	10	0.2	< 2	10							
9	-222.5	16	140	6	0.2	< 2	10							
60	-222.75	28	120	6	0.2	< 2	10							
1	-223	16	160	6	0.2	< 2	10							
2	-223.25	18	76	4	0.2	< 2	10							
3	-223.5	18	84	6	0.2	< 2	10							
4	-223.75	28	120	8	0.2	< 2	10							
5	-224	52	42	4	0.2	< 2	10							
66	237E-224.25N	80	64	2	0.6	< 2	10							

APPENDIX II
STATEMENT OF COSTS

NORANDA EXPLORATION COMPANY, LIMITED

STATEMENT OF COST

DATE September 1984

PROJECT - SB CLAIMS
TYPE OF REPORT Geochem

a) **Wages:**

No. of Days -	4	
Rate per Day -	72.28	
Dates From -	August 1984	
Total Wages	4 X \$72.28	\$289.12

b) **Food and Accommodation:**

No. of Days -	4	
Rate per Day -	25.00	
Dates From -	August 1984	
Total Cost -	4 X \$25.00	\$100.00

c) **Transportation:**

No. of Days -	4	
Rate per Day -	37.50	
Dates From -	August 1984	
Total cost	4 X \$37.50	\$150.00

d) Analysis \$571.20

e) **Cost of Preparation of Report**

Author	72.00
Drafting	72.00
Typing	72.00

f) **Other:**

Contractor

Total Cost \$1,326.32

UNIT COSTS

Unit Costs for Geochem

No. of Days -	4	
No. of Units -	68 Samples	
Unit Costs -	19.50/Sample	
Total cost	68 X \$19.50	<u>\$1,326.32</u>

NORANDA EXPLORATION COMPANY, LIMITED

DETAILS OF ANALYSES COSTS

PROJECT SB GROUP

<u>Element</u>	<u>No. of Determinations</u>	<u>Cost per Determination</u>	<u>Total</u>
Au	68	3.50	238.00
Ag	68	1.50	102.00
Cu	68	1.60	108.80
Pb	68	.60	40.80
Zn	68	.60	40.80
Mo	68	.60	40.80
Total			<u>\$571.20</u>

APPENDIX III
STATEMENT OF QUALIFICATIONS

STATEMENT OF QUALIFICATIONS

I, John Keating of the City of Vancouver, Province of British Columbia,
do hereby certify that:

I am a resident of British Columbia, residing at 1877 West 5th.
Avenue.

I am a graduate of Concordia University, Montreal, with a Bachelor
of Science Degree in Geology.

I am a member in good standing with the Canadian Institute of
Mining and Metallurgy.

I have been a temporary employee with Noranda Exploration Company,
Limited since May, 1979 and a permanent employee since March, 1983.

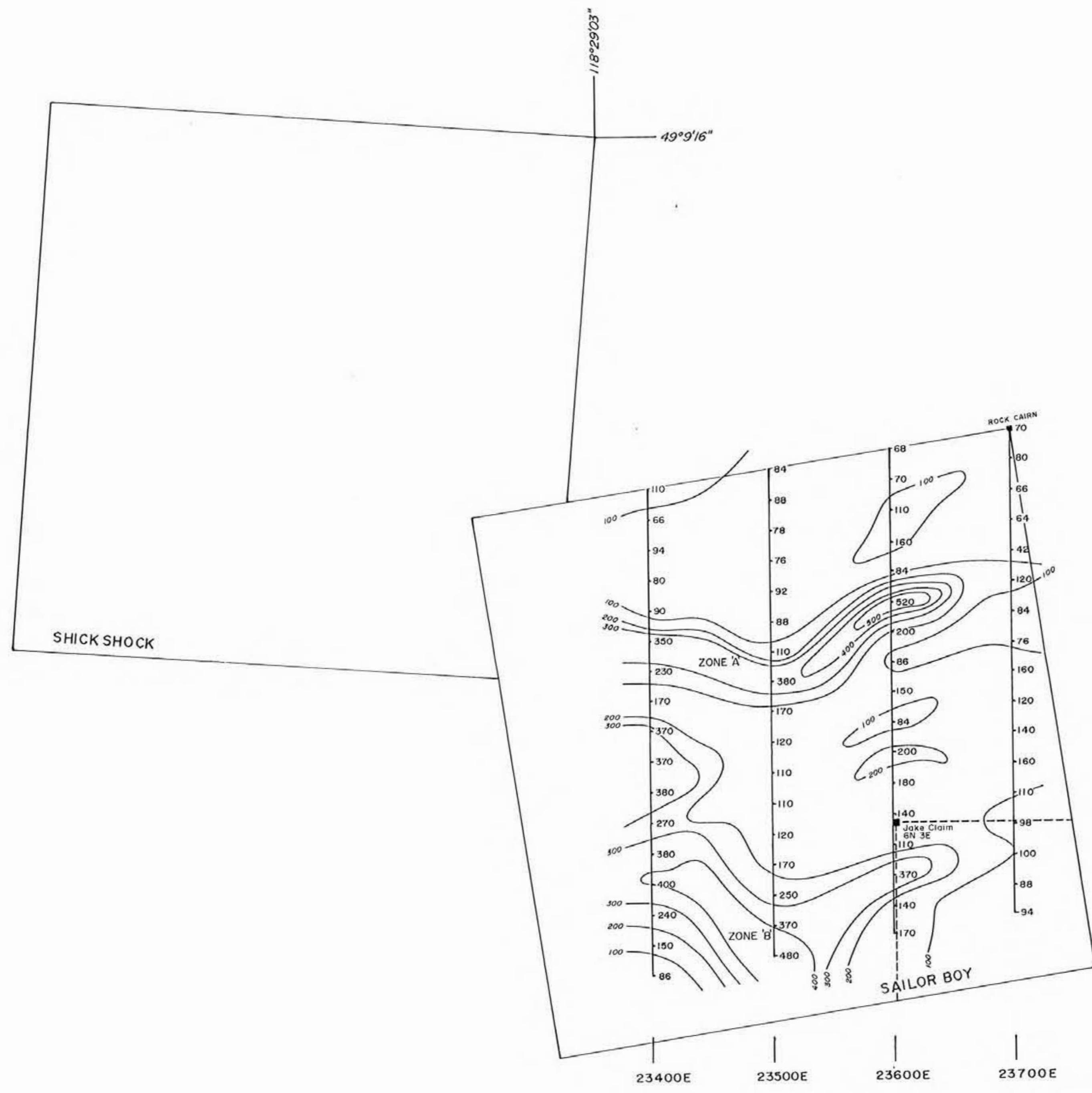


John Keating

Project Geologist

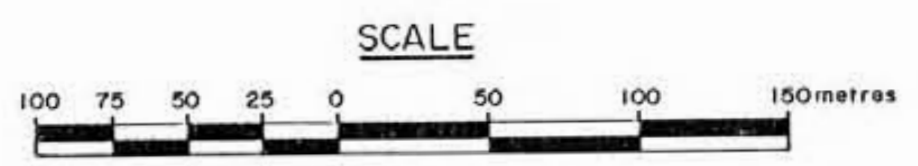
Noranda Exploration Company

Limited(No Personal Liability)



GEOLOGICAL BRANCH
ASSESSMENT REPORT

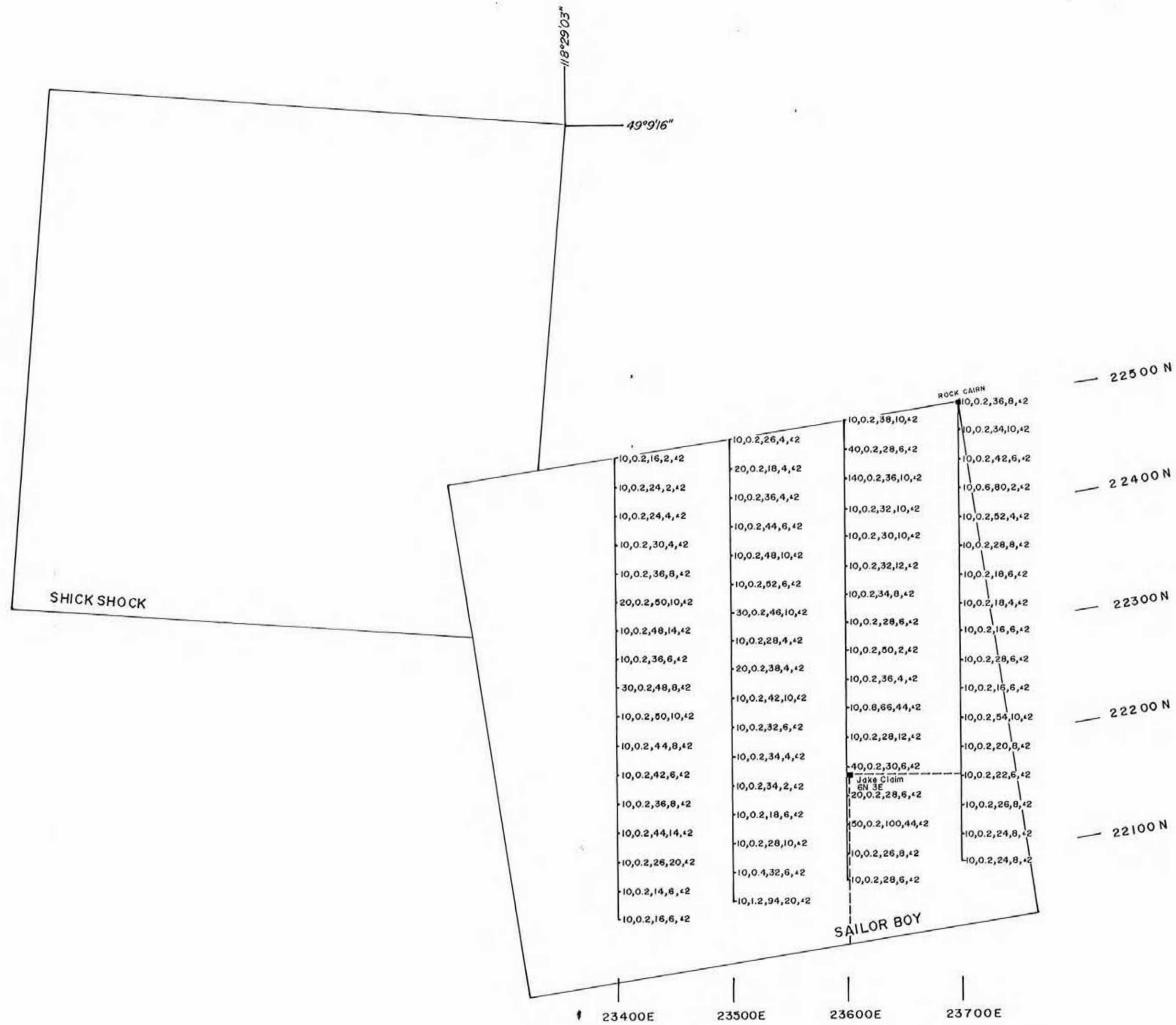
13,052



LEGEND

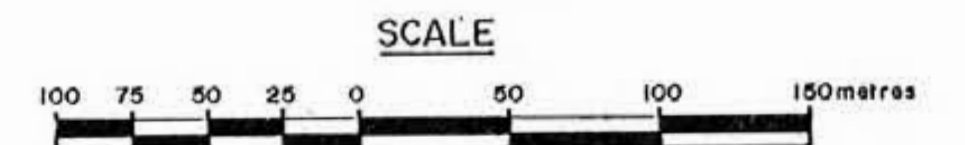
- Grid Line and Station
- Noranda Claim Line
- "Jake" Claim Line
- Geochem Contour
Zinc(ppm)

REVISED	GREENWOOD J.V.	
	SAILOR BOY GRID GEOCHEMISTRY Zinc in ppm	
PROJ. No. 15	SURVEY BY: J.K.	DATE AUGUST 1984
N.T.S. 82 E/2	DRAWN BY: W.M., sksLillie	SCALE 1:2500
DWG. No. 1	NORANDA EXPLORATION OFFICE VANCOUVER	



GEOLOGICAL BRANCH
ASSESSMENT REPORT

13,052



LEGEND

- Grid Line and Station
- Noranda Claim Line
- - - "Jake" Claim Line
- 10,0.2,18,12,+2 Au(ppb), Ag,Cu,Pb,Mo(ppm)

REVISED	GREENWOOD J.V.	
	SAILOR BOY GRID GEOCHEMISTRY Gold in ppb Ag,Cu,Pb,Mo in ppm	
PROJ. No. 15	SURVEY BY: J.K.	DATE: AUGUST 1984
N.T.S. 82 E/2	DRAWN BY: W.M. SkisLillie	SCALE: 1:2500
DWG. No. 2	NORANDA EXPLORATION OFFICE: VANCOUVER	