

Report of
Geophysical Work
on the
Golden Eagle Claim

**GEOLOGICAL BRANCH
ASSESSMENT REPORT**

in the

13,204

Kamloops Mining Division, B.C.
N.T.S. 82M/3W
51°02' 119°27'
U.T.M. 5657000mN 327000mE

for

Mackenzie Range Gold Inc.
Woods Road
Bowen Island, B.C., V0N 1G0

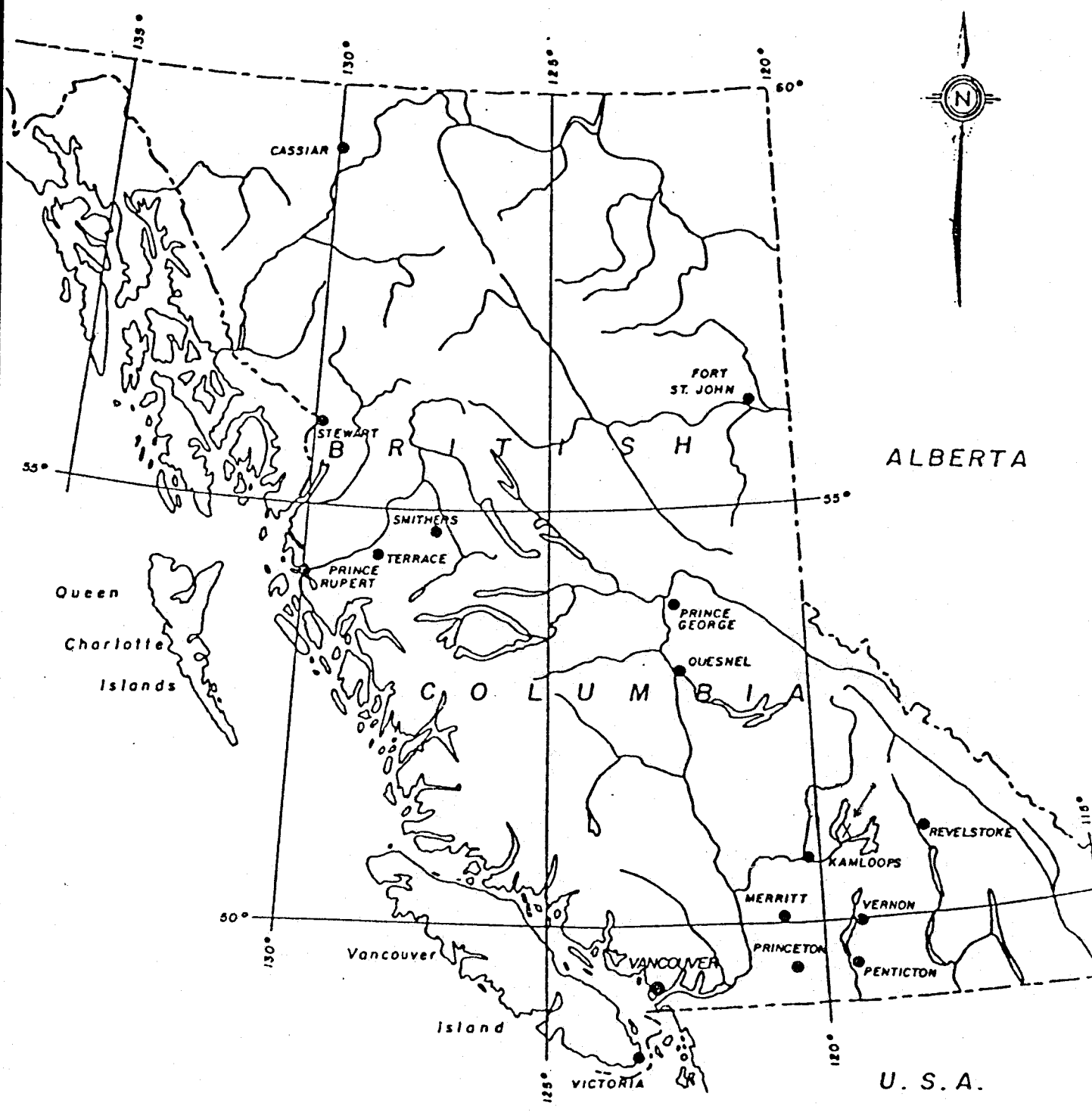
Report Prepared by:

L.D. Lutjen, R.D. Lodmell
Werner Gruenwald

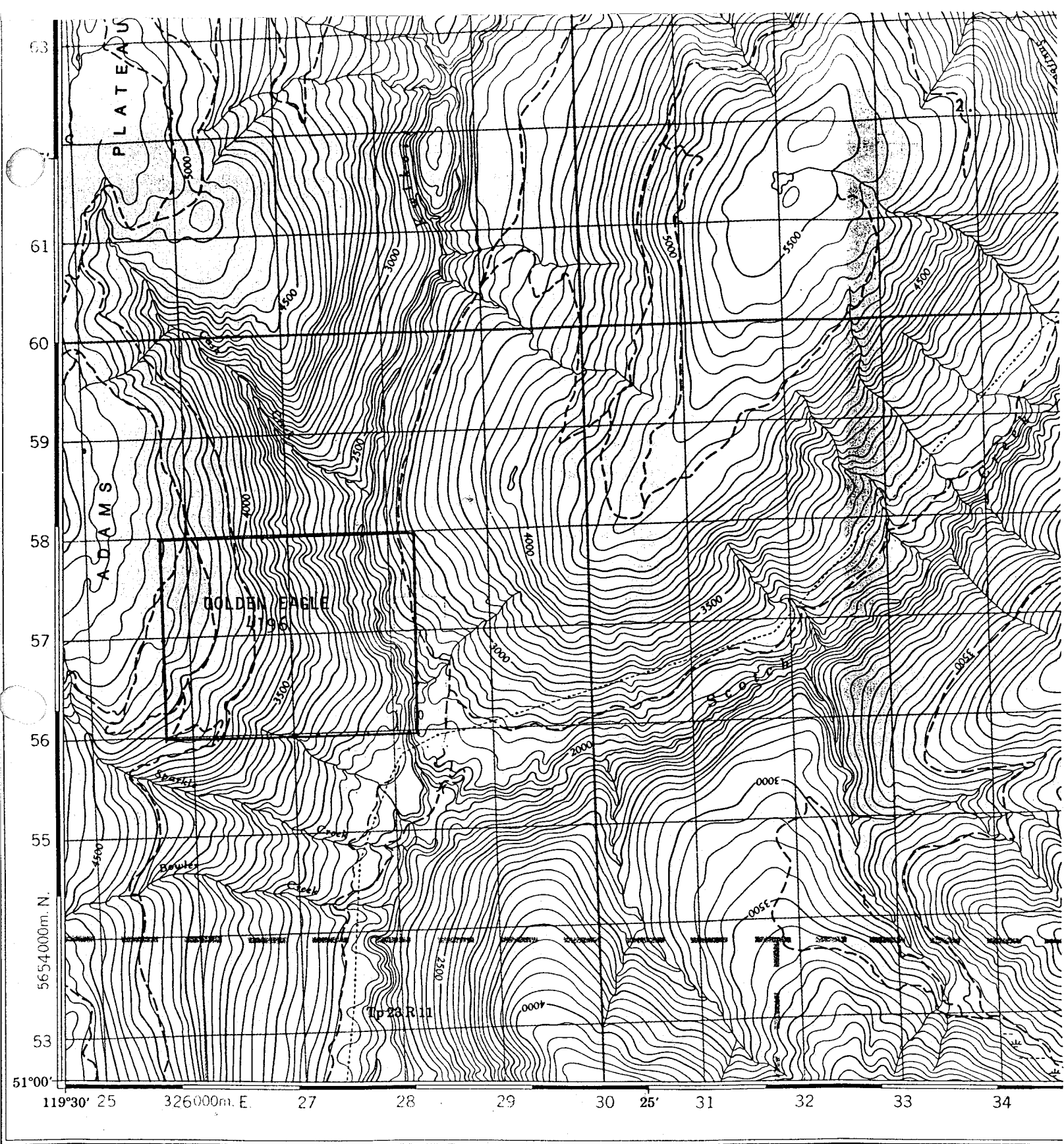
September 27, 1984

TABLE OF CONTENTS

	<u>Page</u>
Location Map	1.
Topographical Map	2.
Claims Map	3.
Property and Ownership	4.
Location and Access	4.
Geology and Vegetation	4.
History	4.
History	5.
Work Performed	5.
Conclusions	5.
References	6.
<i>GEOPHYSICAL GRID KEY</i>	
Plate 1 to 3 Magnetic Profile of Line E.70 + S0 to E.70 + S3	
Plate 4 to 7 Magnetic Profiles of Grid	
Plate 8 Magnetic Contour of Grid	
Statement of Expenditures	7.
Authors Qualifications and Certifications - L. D. Lutjen	8.
- Certificate	9.
- R. D. Lodmell	10.
- Certificate	11.
- Report Certification	12.



X - Area of the Golden Eagle Claim

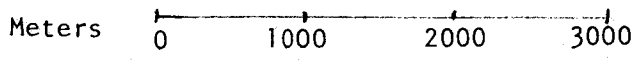
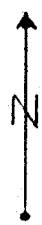


Produced by the SURVEYS AND MAPPING BRANCH,
 DEPARTMENT OF ENERGY, MINES AND RESOURCES.
 Updated from aerial photographs taken in 1976. Culture check
 1977. Information current as of 1977.

Copies may be obtained from the Canada Map Office,
 Department of Energy, Mines and Resources, Ottawa,
 or any map dealer.

© 1977 Her Majesty the Queen in Right of Canada.
 Department of Energy, Mines and Resources.

Topographical Map
 of the
 Golden Eagle Claim
 N.T.S. 82M/3W
 Scale 50,000 to 1



- | | |
|--|------------|
| Roads: | Routes: |
| loose or stabilized surface, all weather | gravier, a |
| loose surface, dry weather | de gravier |
| unclassified streets | rues hor |
| cart track | de terre |
| trail, cut line or portage | sentier, p |
- FOR COMPLETE REFERENCE SEE REVERSE SIDE

PROPERTY AND OWNERSHIP

The Golden Eagle Mineral Claim consists of 20 units, 4 units South and 5 units East. The claim was recorded in the Kamloops Mining Division, record number 4196, September 27, 1982 on claims map 82M/3W and is in good standing.

The owner of the Golden Eagle Mineral Claim is MacKenzie Range Gold Inc. of Bowen Island, B.C., VON 1G0 telephone number (604) 735-0988.

LOCATION AND ACCESS

The Golden Eagle Mineral Claim is situated North of Big Shuswap Lake and East of Adams Lake on the Adams Plateau, just above the confluence of Kwikoit Creek and Scotch Creek in the Kamloops Mining Division on Claim and N.T.S. map 82M/3W, $51^{\circ}02' 119^{\circ}28'$ and U.T.M. 5657000mN and 327000mE.

The Golden Eagle Mineral Claim is accessible on the East side of the claim via a well kept logging road that follows Scotch Creek 8 miles from a paved highway on the North shore of Big Shuswap Lake and can also be reached on the West side via a logging road that branches off of the Scotch Creek road.

GEOLOGY AND VEGETATION

The area of the Golden Eagle Claim is heavily overburdened and very little exposed rock is available. However, several mineralized areas were discovered during a prospecting program in 1983. The exposed outcroppings consist of pyrite, arsenopyrite, pyrrhotite, calcopyrite, magnetite, sphalerite and galena minerals that are visible and quartzite, chlorite schist, mica schist, diorite, green rock, basalt and granite rocks. Also the area is located along the Tshin-ikin limestone formation that runs across the plateau in an Easterly Westerly direction and there is a granitic intrusion along the East side of the claim.

The area's elevation ranges from 4,800 ft. at the N.W. corner of the claim to 2,200 ft. at the S.E. corner. The terrain on the East side of Kwikoit Creek drops steeply whereas on the West side the slope is more moderate. The area is heavily forested, predominantly with fir, spruce, balsam and has areas of cedar and thick underbrush.

HISTORY

Placer prospecting in the Scotch Creek, Adams Plateau area began in the 1860's. However, no records were kept until 1877. From 1886 to 1888, \$27,000.00 of coarse placer gold (with nuggets up to one-half ounce) was reported to have been recovered. From 1891 to 1945, 1,999 ounces of placer gold is reported to have been recovered. No placer gold has been recovered East of the confluence of Kwikoit Creek (North branch) and Scotch Creek (East branch). Recovery of placer gold extended about 1/4 mile up Kwikoit Creek (North branch) where the Southern side of the Golden Eagle Mineral Claim is (Bulletin 28, 1950). The source of this gold is "undoubtedly quite local". (Report of the Minister of Mines 1936, Pg. D49 - D53.)

HISTORY

Hardrock prospecting on the plateau which is approximately seven miles in diameter has a history from the early 1900's with a number of claims giving assays in gold and high assays in silver, zinc and lead. (Report of the Minister of Mines, 1930, Pg. A184 - A188 and Report of the Minister of Mines 1936 Pg. D39 - D43.)

WORK PERFORMED

Work on the Golden Eagle Mineral Claim consisting of a geophysical grid and geophysical readings was done during the 25th to the 28th of July, 1984. This work consisted of establishing a base line point at a point 350 meters East of the claim's L.C.P. on the claim's Southern boundary, which was designated as E.70 + S0, and running a base line South for 1500 meters to point E.70 + S3. Geophysical readings were taken at 25 meter intervals along this line. (see magnetic profile plates 1 to 3) At a point 575 meters South of point E.70 + S0 a geophysical grid was set up and readings were taken at 25 meter intervals on grid lines to investigate this conductive zone. (see magnetic profile plates 4 to 7 and magnetic contour plate 8) 2.8 KM. OF LINE SURVEYED. The magnetometer used for the geophysical readings is a Scintrex MF-2 Fluxgate Magnetometer serial #002110 and the data was taken using a total vertical component measurement. All loops were closed to the mag. base (E.70 + S0) and diurnal corrections were made with respect to time and date. All values are absolute and labeled + or - gammas with respect to the mag. base (+00).

CONCLUSIONS

Kuroko - type massive sulfide deposits are presently being mined to the immediate West of the Golden Eagle Claim and in all likelihood extend into this property. These deposits on the Adams Lake Plateau have extended hundreds of meters and are rich in Ag - Hg - Zn - Cu and As. The geophysical survey on the Golden Eagle Claim has identified 5 conductive zones. (see plates 1 to 3) The conductive zones lie on line E.70 + S0 to E.70 + S3 and plates 4 to 7 are an expanded grid of one of the five zones. This zone has been geophysically mapped for over 200 meters on the surface with no end of the conductivity in sight. We would recommend a continuance of the detailed grid (S2-S5 + W4-W6) Northerly; and additional detailed grids of the remaining four conductive zones. Once the grids have been established and the remaining magnetometer readings taken we would recommend an additional survey of V.L.F.-E.M. and spot geochemical sampling to pin-point the most mineral likley areas prior to drilling.

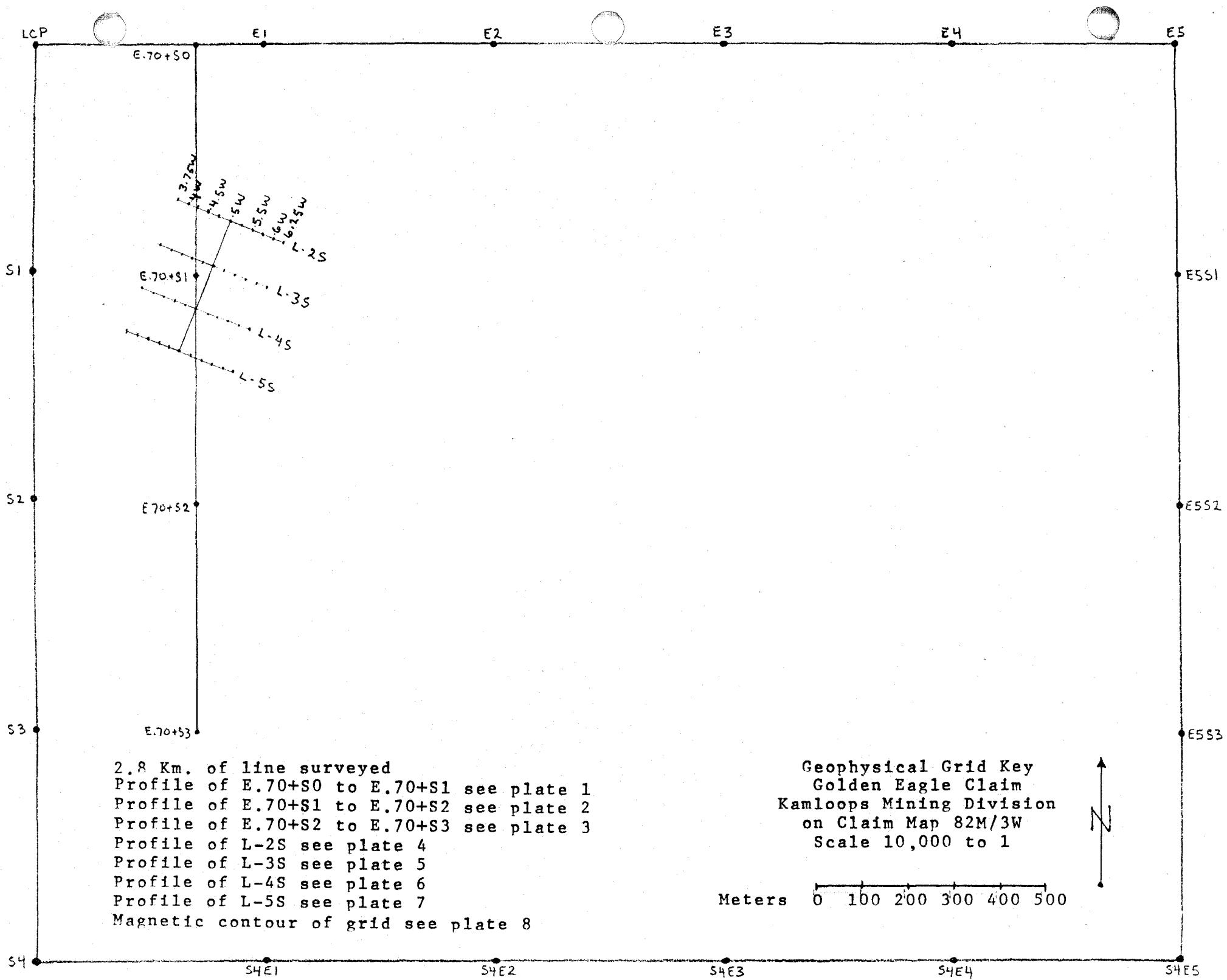
REFERENCES

Report of the Minister of Mines 1930 page A184 - A188.

Report of the Minister of Mines 1936 page D39 - D43.

Report of the Minister of Mines 1936 page D49 - D53.

Geological Survey of Canada Map 48 1963.



2.8 Km. of line surveyed
 Profile of E.70+S0 to E.70+S1 see plate 1
 Profile of E.70+S1 to E.70+S2 see plate 2
 Profile of E.70+S2 to E.70+S3 see plate 3
 Profile of L-2S see plate 4
 Profile of L-3S see plate 5
 Profile of L-4S see plate 6
 Profile of L-5S see plate 7
 Magnetic contour of grid see plate 8

Geophysical Grid Key
 Golden Eagle Claim
 Kamloops Mining Division
 on Claim Map 82M/3W
 Scale 10,000 to 1

Meters 0 100 200 300 400 500



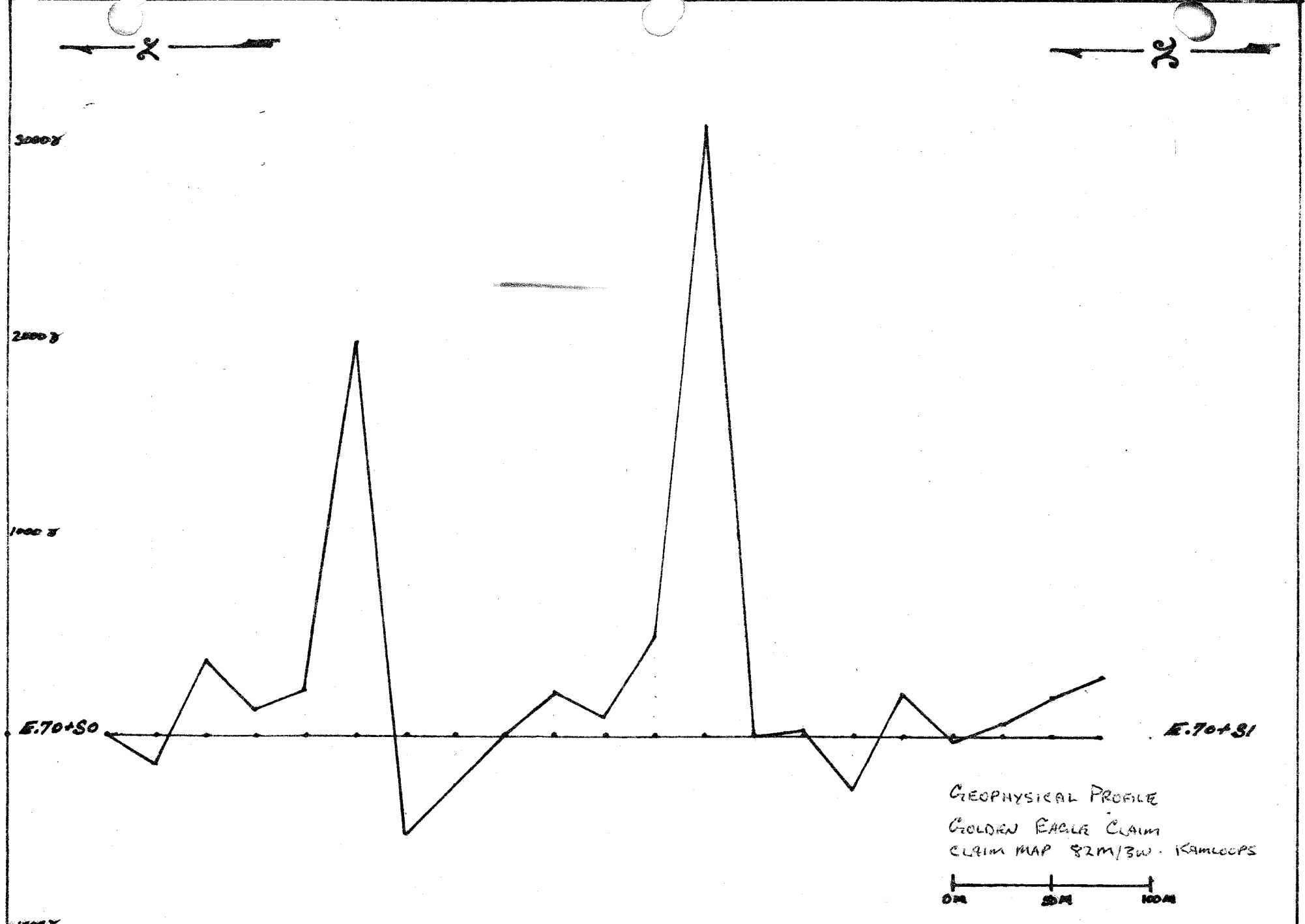


PLATE NO. 1 - LINE E.70+50 TO E.70+51
FOR: MACKENZIE RANGE GOLD INC.

N.T.S. : 82M/3W
DRAWN BY: LARRY D. LUTJEN

DATE: JULY 29, 1964
SCALE: NR. 1CM = 25M VR 1CM = 2500

: 2,500 TO 1

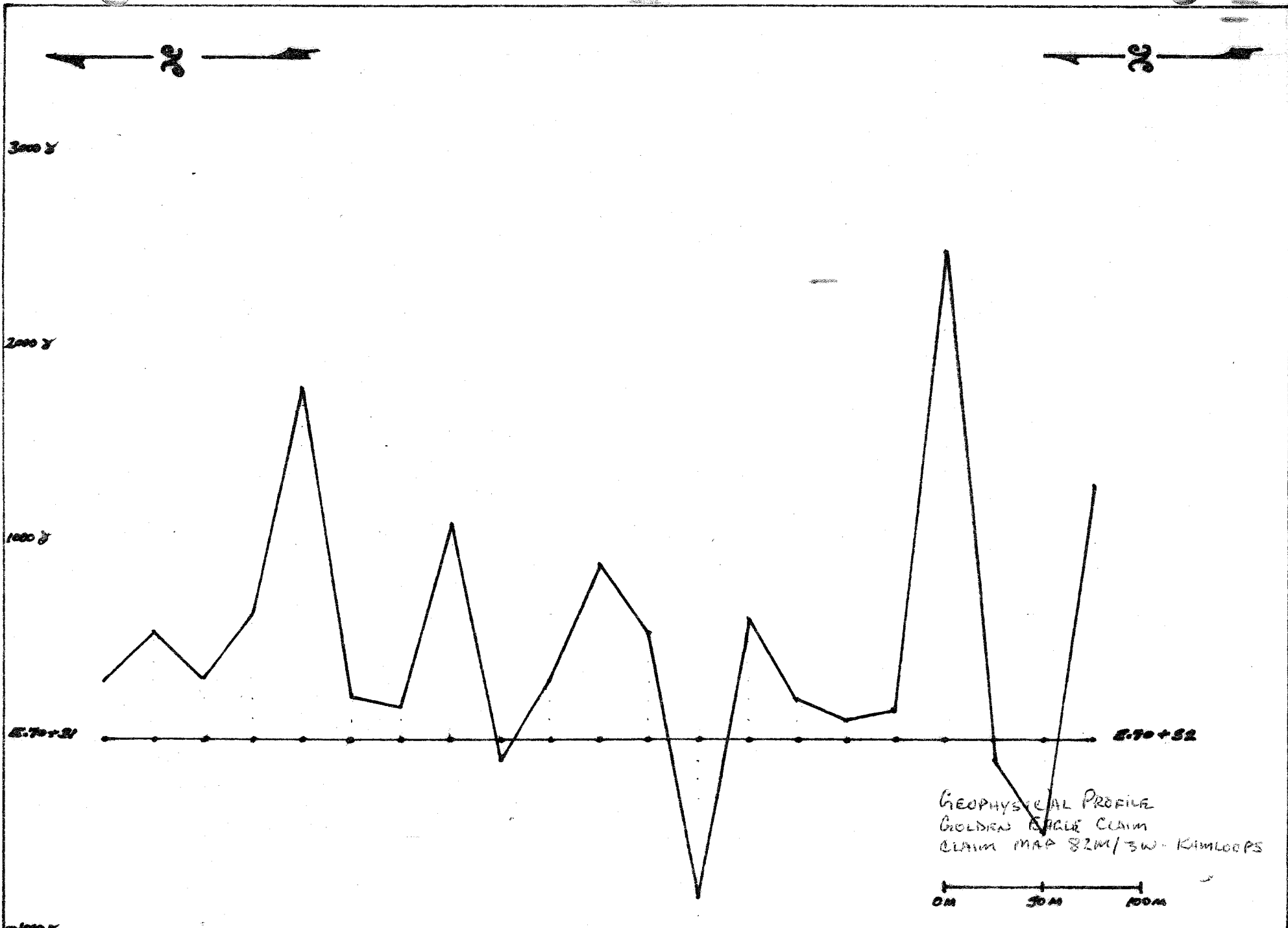
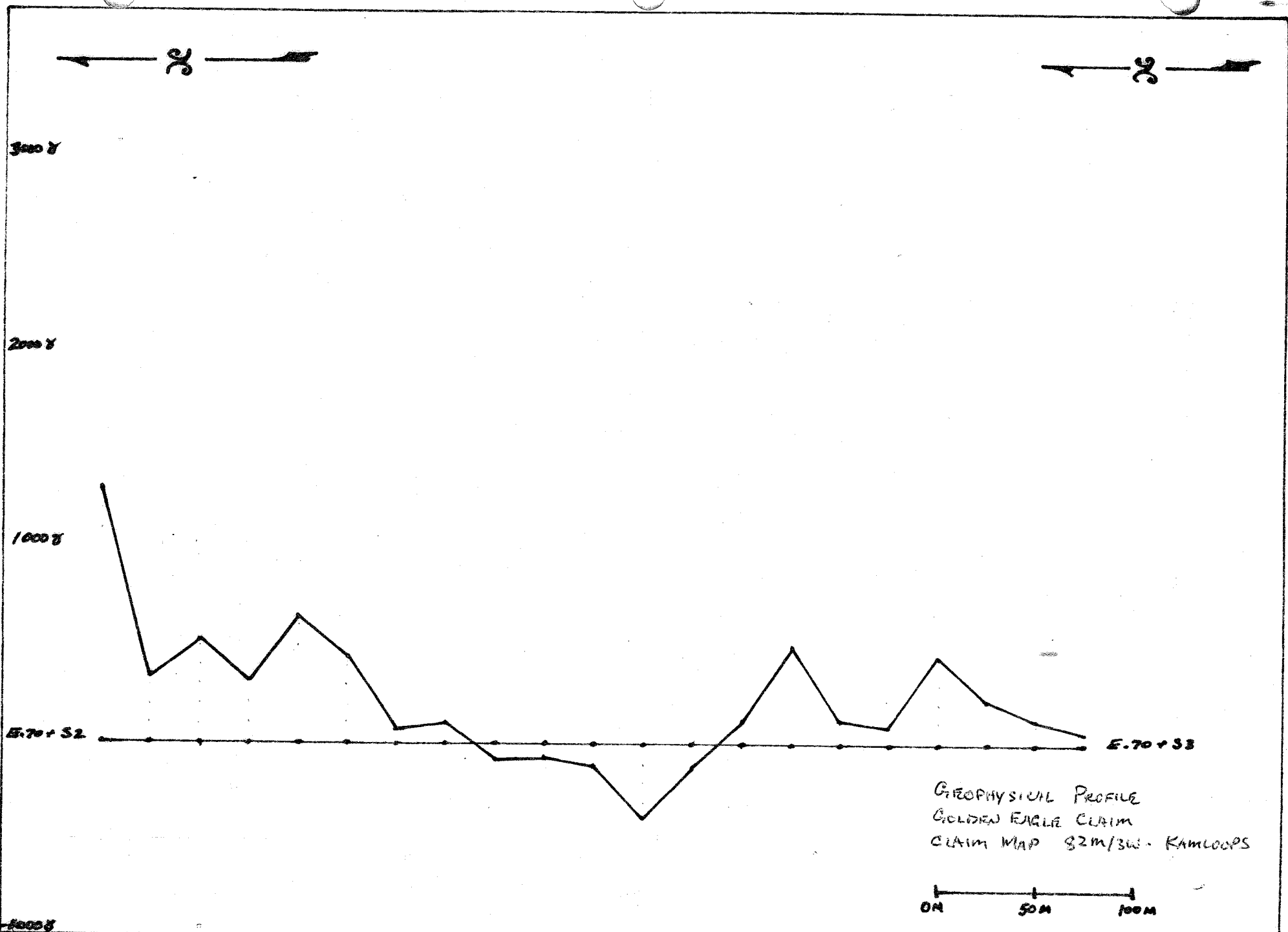


PLATE NO. 2 - LINE E.70+S1 TO E.70+S2
FOR: MACKENZIE RANGE GOLD INC.

M.T.S. @ 2M/3W
DRAWN BY: LARRY D. LITTON

DATE: JULY 29, 1984
SCALE: 1 IN. = 25M VT. 1CM = 200G
: 2500 TO 1



GEOPHYSICAL PROFILE
 GOLDEN EAGLE CLAIM
 CLAIM MAP 82M/3W - KAMLOOPS

PLATE NO. 3 LINE E-70+52 TO E-70+53
 FOR: MACKENZIE RANGE GOLD INC.

N.F.S. 82M/3W
 DRAWN BY: LARRY D. LUTJEN

DATE: JULY 29, 1984
 SCALE: HORIZ. 1CM = 25M VERT. 1CM = 250G
 = 2,500 G/G

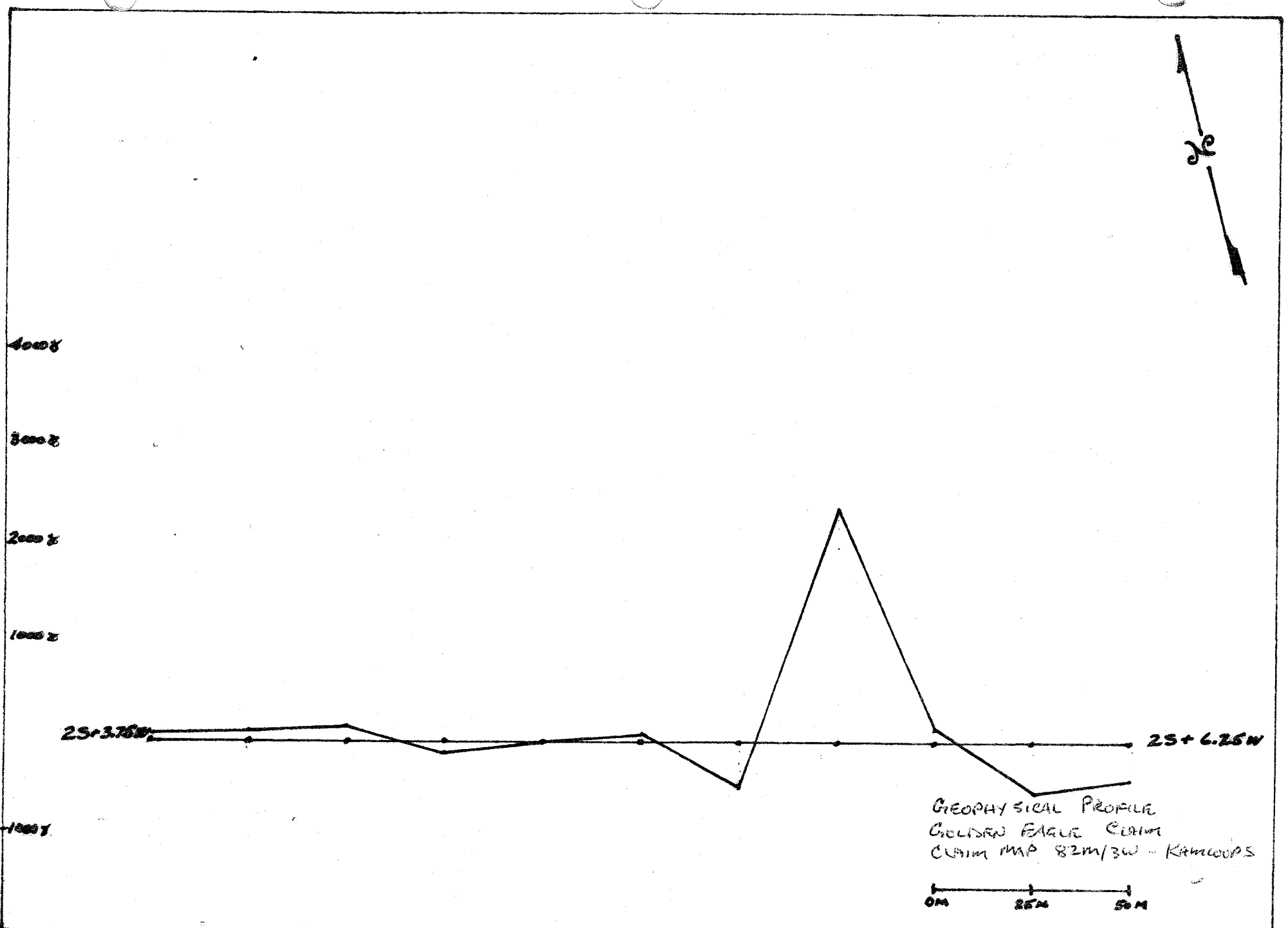
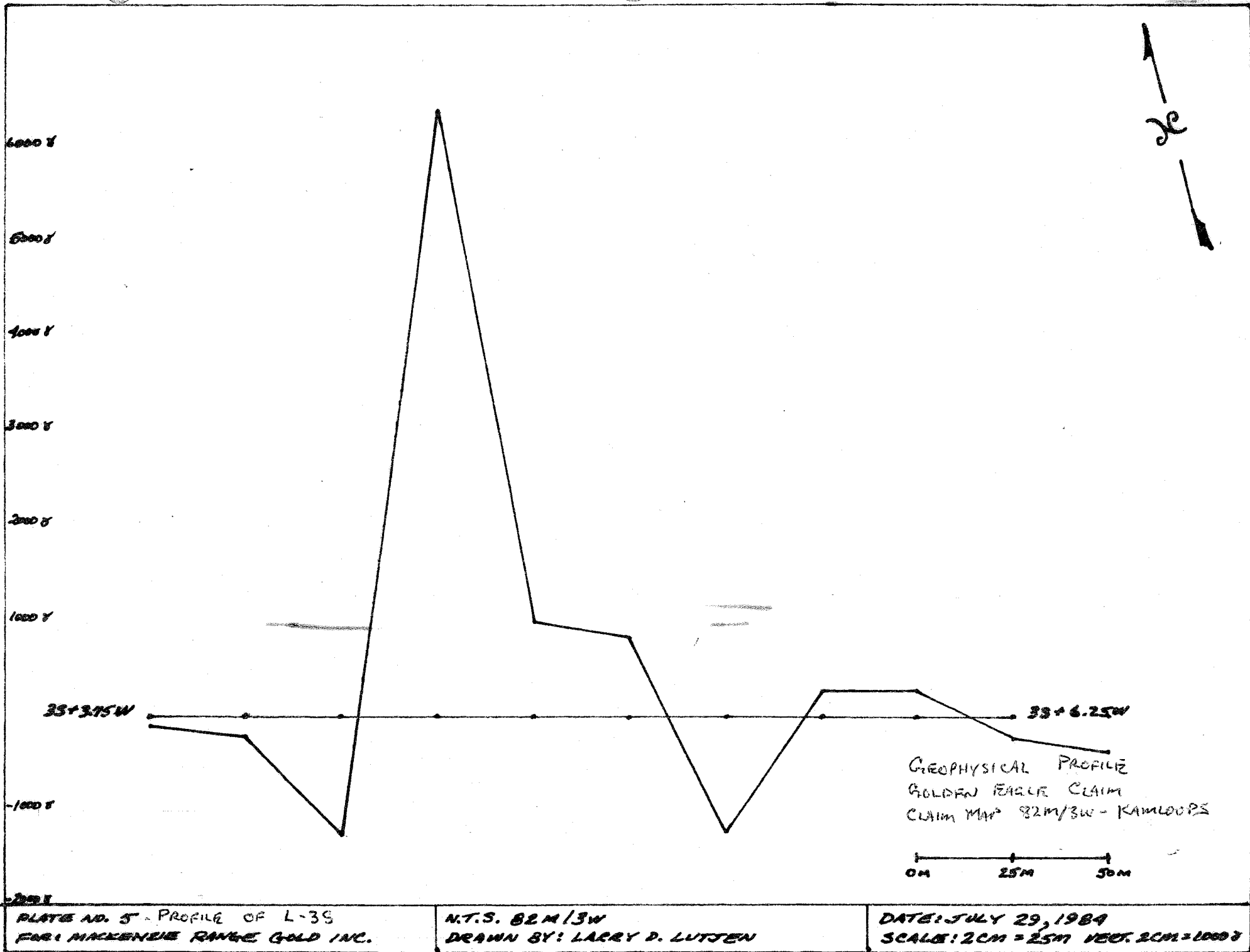


PLATE NO. 4 PROFILE OF L-25
 FOR: MACKENZIE RANGE GOLD MR.

N.T.S. 82M/3W
 DRAWN BY: LARRY D. LUTJEN

DATE: JULY 29, 1984
 SCALE: HORIZ. 2 CM = 25 M VERT. 2 CM = 1000 γ



1,250 701

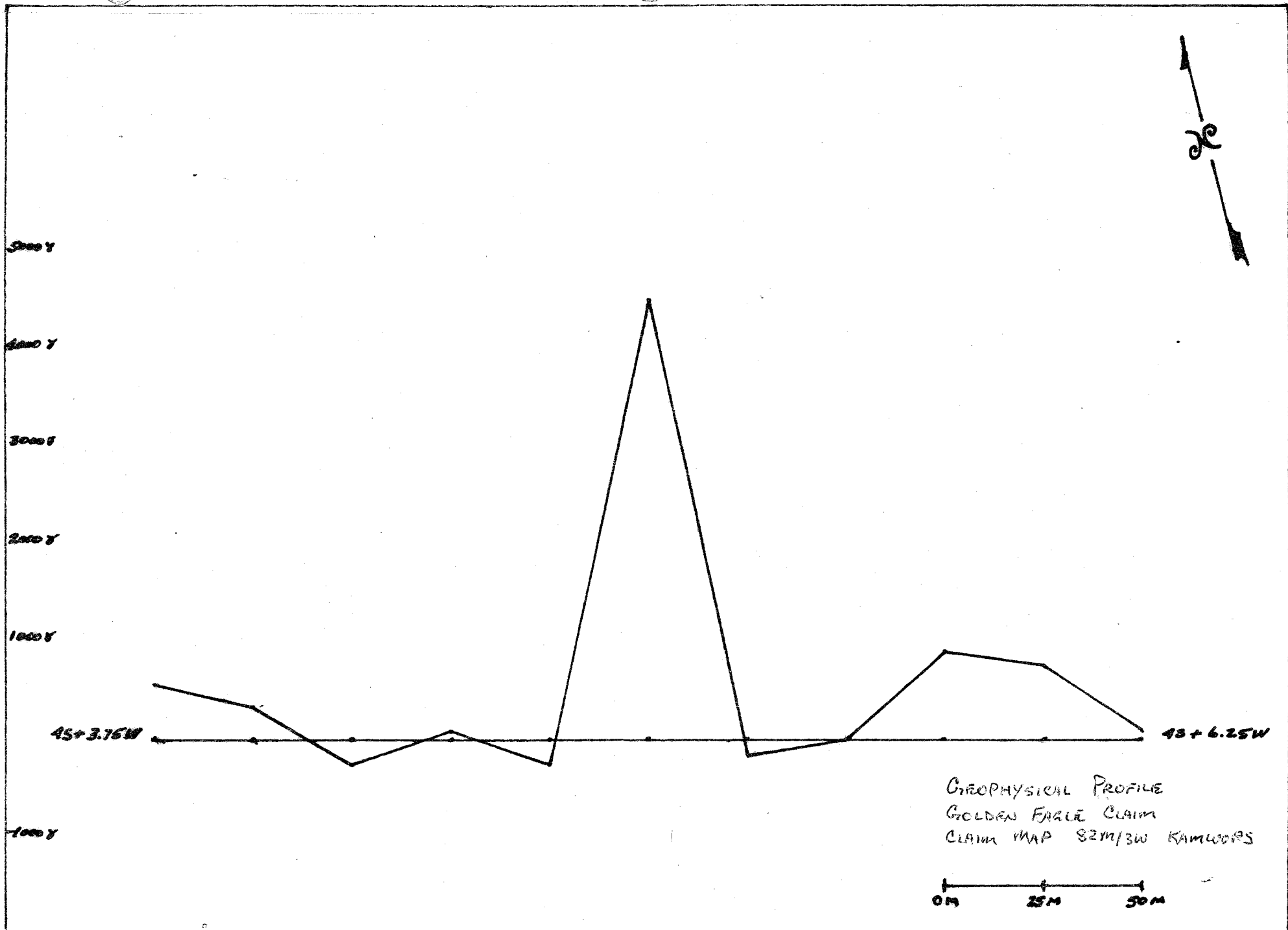
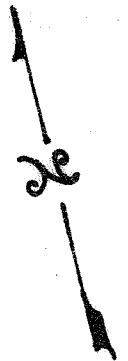


PLATE NO. 6 - PROFILE OF L-45
 FOR: MACKENZIE RANGE GOLD INC.

N.T.S. 82M/3W
 DRAWN BY: LARRY D. LUTJEN

DATE: JULY 29, 1984
 SCALE: HORIZ 2CM = 25M VERT. 2CM = 1000M
 : (1,250 to 1)



2000
1000
-1000



GEOPHYSICAL PROFILE
GOLDEN EAGLE CLAIM
CLAIM MAP 82M/3W - KAMLOOPS

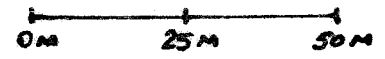
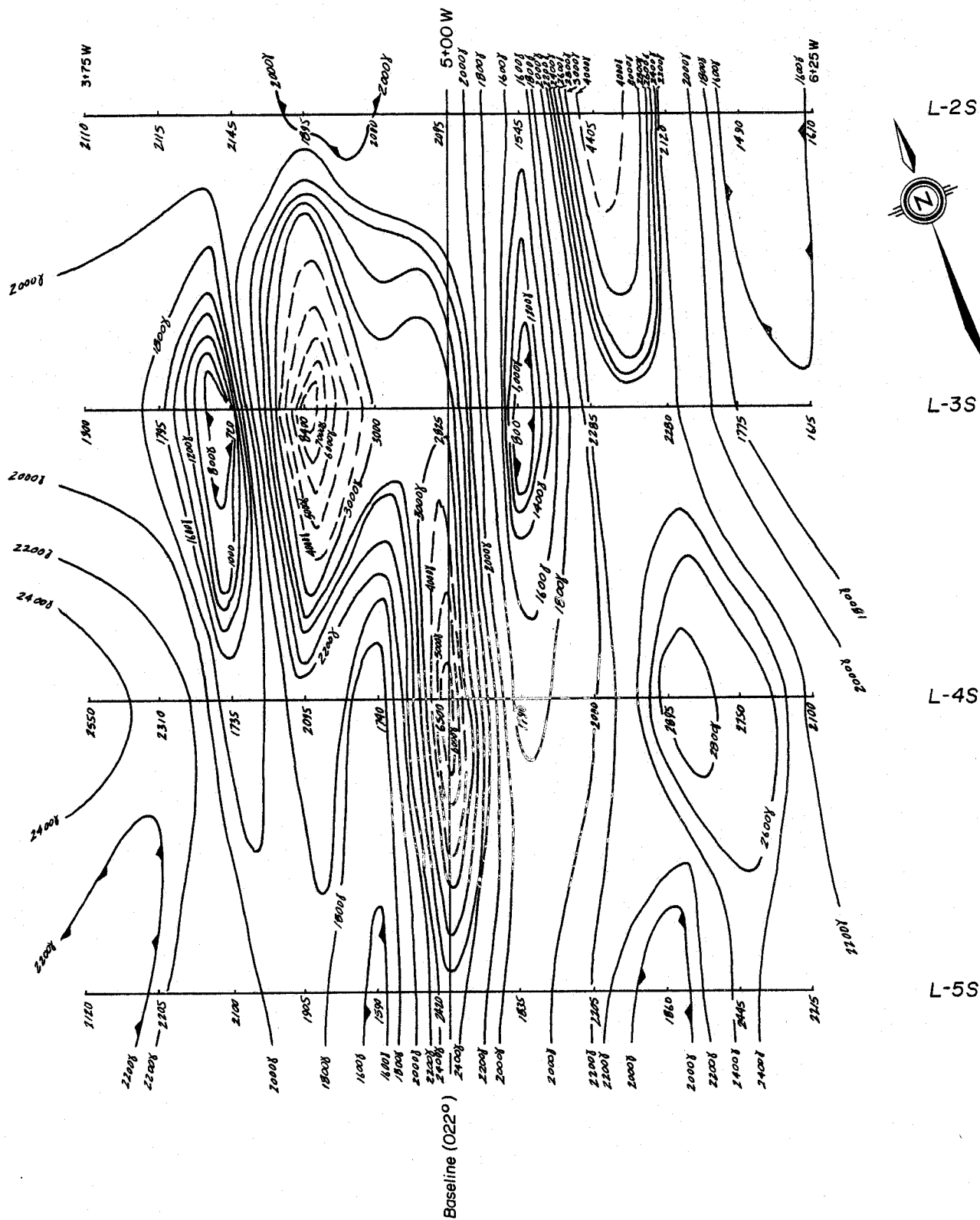


PLATE NO. 7 PROFILE OF L-55
FOR: MACKENZIE RANGES GOLD INC.

N.T.S. 82M/3W
DRAWN BY: LARRY D. LUTJEN

DATE: JULY 29, 1984
SCALE: HE 2CM = 25M VT. 2CM = 1000'

2 1,250 T01



Note:

Magnetic readings (vertical component) taken using a Scintrex MF-2 magnetometer.

Contour interval = 200 gammas (γ)

Corrected field readings have all been increased by a factor of 2,000 gammas to eliminate negative values.

MACKENZIE RANGE GOLD INC.

**MAGNETIC CONTOUR PLAN
GOLDEN EAGLE CLAIM
KAMLOOPS MINING DIVISION, BRITISH COLUMBIA.**

Technical Work By: Kerr, Dawson and Assoc. Ltd.	Scale: 1:2,000 0 10 20 30m 50
Drawn By: W G	Date: October, 1984.
Approved By:	Plate No. 8

STATEMENT OF EXPENDITURES
for Geophysical Work
on the
Golden Eagle Mineral Claim
July 25 - 28, 1984

LABOUR

L.D. Lutjen 4 days @ \$150.00 per day	\$ 600.00
R.D. Lodmell 4 days @ \$150.00 per day	600.00
Jon Lutjen 4 days @ \$100.00 per day	400.00
Werner Gruenwald, Contour Plotting	60.00

EXPENSES

Truck usage 4 days @ \$30.00 per day	120.00
Meals for 12 man days @ \$20.00 per day	240.00

REPORT PREPARATION

2 man days @ \$150.00 per day	300.00
Typing, Stationary and Reproduction	<u>40.00</u>

Total Cost	<u><u>\$ 2,360.00</u></u>
------------	---------------------------

AUTHORS QUALIFICATIONS

I Larry D. Lutjen having graduated from the College of San Mateo, U.S.A., in 1965 (Degree in Electronics) have the following prospecting experience:

- 1958-1962 Surface and underground mining on the Hard Quartz mineral claim, Adin Mt. California (Drilling, Blasting, Timbering, Highgrading)
- 1963-1969 Prospecting with John Harden on the Warner Range (California), Lovelock Plateau (Nevada), and Shaffer Mountain (California), for Au, Ag, Hg, W, Mo, Cu, Zn & Pb. Staked many claims.
- 1972-1976 Geophysical prospecting with Frank Hall in the Scotch Creek area (British Columbia). Optioned several claims, Silver King, Silver Queen etc., (Used Horizontal & Vertical loops at 1600 c.p.s. Sharpe SE 600, and self potential surveys)
- 1977-1980 Geophysical & geochemical prospecting in the Shuswap lake and Adams plateau area. (McPhar 800 magnetometer). Geophysically prospected the Lost Cabin Mine on Adin Mt., California for Lorcan Resources Ltd., resulting in a ten year option.
- 1981-1982 Geophysical & geochemical prospecting with J.A. Lutjen and R.D. Lodmell in the south central region of B.C. (McPhar 800 and S.P.). Staked 12 properties from Beaverdell to the Adams plateau.
- 1982-1983 Recieved my geophysical certification from Malaspina College. Did a geophysical survey on Ground Hog Basin for Aurun Minerals Ltd. (Geonics 816-G Proton Mag. and EM-16 VLF-EM), including geochemical sampling, geophysical mapping and grid layout. Geochemical sampling and geological mapping for Tylox Resources Ltd. on the AU-1 & AU-2 claims in the Monashee Pass.
- 1983-1984 Geophysical survey on the Golden Eagle claims for MacKenzie Range Gold Inc., including mapping and interpretation. (Scintrex MF-2 Magnetometer, Sabre mod. 27 VLF-EM, and S.P.). Geophysical and geochemical survey on the Golden Quartz 1-12 on Adin Mt. for MacKenzie Range Gold Inc. (Scintrex MF-2 and Sabre mod. 27 VLF-EM).

Larry D. Lutjen
 Certified Geophysical Prospector
 R.R. #1, Box #12
 Chase, B.C., Canada
 VOE 1MO

MALASPINA COLLEGE

Statement of Course Completion

LARRY D. LUTJEN

has

Successfully Completed 180 Hours of Instruction
in

MINERAL EXPLORATION FOR PROSPECTORS

PRESENTED BY B.C. MINISTRY OF ENERGY, MINES AND PETROLEUM RESOURCES
B.C. MINISTRY OF EDUCATION

APRIL 16 to 30, 1983 - MESACHIE LAKE, B.C.

MAY 2, 1983

Dated at Nanaimo,
British Columbia, Canada



Director / Dean

Registrar

Instructor

AUTHOR'S QUALIFICATIONS

I, Richard Lodmell, residing at 534 MacKenzie Street, Kamloops, British Columbia, (mailing address M.P.O. Box 342, Kamloops, B.C., V2C 5K9), certify that:

1. I am a practising prospector in British Columbia.
2. I have worked in the mining and mine exploration industries throughout the last twelve years, in British Columbia.
3. I have completed a rock and mineral identification course in Kamloops, British Columbia, presented by the District Geologist, Gordon White.
4. I am a graduate of the Advanced Course in Mineral Exploration for Prospectors in British Columbia, presented by the Ministry of Energy, Mines and Petroleum Resources and Malaspina College.

MALASPINA COLLEGE

Statement of Course Completion

RICHARD LODMELL

has

Successfully Completed 180 Hours of Instruction
in

MINERAL EXPLORATION FOR PROSPECTORS

PRESENTED BY B.C. MINISTRY OF ENERGY, MINES AND PETROLEUM RESOURCES
B.C. MINISTRY OF EDUCATION

APRIL 16 to 30, 1983 - MESACHIE LAKE, B.C.

MAY 2, 1983

Dated at Nanaimo,
British Columbia, Canada



A handwritten signature in dark ink, appearing to read "Richard G. Johnson", written over a horizontal line.

Director/Dean

A handwritten signature in dark ink, appearing to read "John [unclear]", written over a horizontal line.

Registrar

A handwritten signature in dark ink, appearing to read "Richard Lodmell", written over a horizontal line.

Instructor

GEOPHYSICAL QUALIFICATIONS

This report has been prepared in conjunction with and collaboration from the undersigned. The geophysical readings were taken with a Scintrex MF-2 Fluxgate Magnetometer Serial #002110 sampling the total vertical magnetic field. All readings are absolute and the diurnal shifts were corrected using a closed loop/mag. base system with respect to time and date.



Werner Gruenwald, B. Sc.
Geologist, Magnetic Contouring
#206 - 310 Nicola Street
Kamloops, B. C. V2C 2P5

A handwritten signature in cursive script, reading "Larry D. Lutjen".

Larry D. Lutjen
Certified Geophysical Prospector
R.R. #1, Site 11, Box 12
Chase, B. C. VOE 1M0

A handwritten signature in cursive script, reading "Richard D. Lodmell".

Richard D. Lodmell
Certified Geophysical Prospector
M.P.O. Box 1192
Kamloops, B. C. V2C 6H3