

84-1076-B-13405
11/85

SOIL GEOCHEMISTRY
CROWN POINT MINERAL CLAIM GROUP
SLOCAN MINING DIVISION
SANDON, B.C.
NTS 82 F/14 E
LATITUDE 49°59.5'N, LONGITUDE 117°12.5'W

Owner: Gerald Bennett

Operator: L. B. Goldsmith

**GEOLOGICAL BRANCH
ASSESSMENT REPORT**

Locke B. Goldsmith, P. Eng.
Consulting Geologist

13,405

November 9, 1984

TABLE OF CONTENTS

SUMMARY	1 /
INTRODUCTION	2 /
GEOLOGY	2 /
LOCATION MAP	3 /
CLAIM MAP	4 /
SOIL GEOCHEMISTRY	5 /
CONCLUSIONS	5 /
RECOMMENDATIONS	5 /
COST ESTIMATE	6 /
ENGINEER'S CERTIFICATE	7 /
REFERENCE	8 /
ITEMIZED COST STATEMENT, 1984 PROGRAMME	9 /
APPENDIX: GEOCHEMICAL ANALYSES	/
SOIL GEOCHEMISTRY MAP (Pocket inside back cover)	/

SOIL GEOCHEMISTRY
CROWN POINT MINERAL CLAIM GROUP
SLOCAN MINING DIVISION
SANDON, B.C.

SUMMARY

One anomalous lead and one anomalous silver value were obtained in soil sampling. Contamination from mine dumps may have contributed to the generally high threshold levels of metals, particularly on the east side of the grid. Detailed soil geochemistry and geological mapping are recommended at a cost of \$7,370.00.

INTRODUCTION

The Crown Point *et al.* reverted crown-granted mineral claims are located 2.2 km at 037° Az. from Sandon, B.C., on the south-facing slope of Mt. Payne. Elevations range between 1890 m (6200') and 2230 m (7300'). Access is via gravel roads from Highway 31A south to Sandon and Cody and thence northerly on dirt roads and trails which end near the southern boundary of the property. A list of the claims follows.

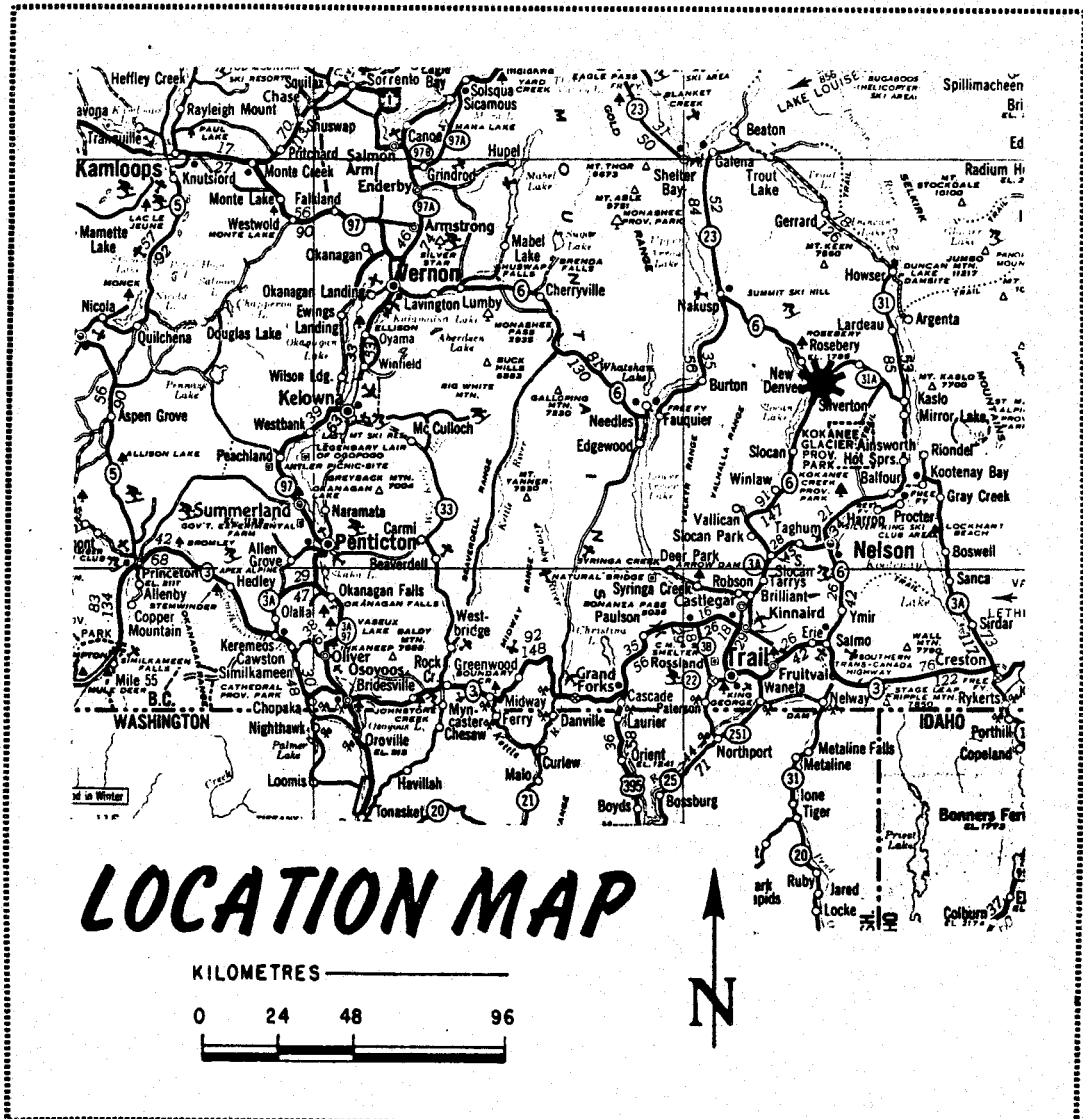
<u>Claim Name</u>	<u>Lot Number</u>	<u>Record Number</u>	<u>Date of Record</u>	<u>Notes</u>
Crown Point	586	} 1142(3)	March 23, 1979	
Random Shot	1726			2 Fractions
Shunia	2067			3 Fractions

Early history of the property is documented by Cairnes (1935, pp. 1-3) at which time it was part of the Ajax group. At least two levels have been driven on the Crown Point claim, and some ore removed near the portal of the number 5 adit (*op. cit.*, p. 3).

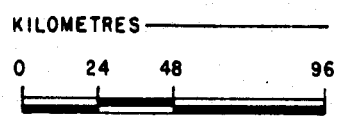
Nine soil samples were analysed for lead and silver. Sampling was supervised by the author. Approximately 0.5 km of grid was established.

GEOLOGY

The eastern portion of the property is underlain by Slocan series argillite and quartzite, while to the west, slate predominates. At least 5 lode systems cross or are projected to cross the claims. From north to south these are the Galena, Ajax Fraction, Ajax West, Ajax Main, and Ajax East (Cairnes, 1935, Fig. 1 & 2, and pp. 1-3). Each lode strikes northeasterly and dips southeasterly. All have produced tonnages of high-grade silver-lead-zinc.

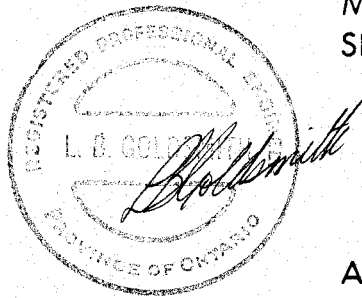


LOCATION MAP



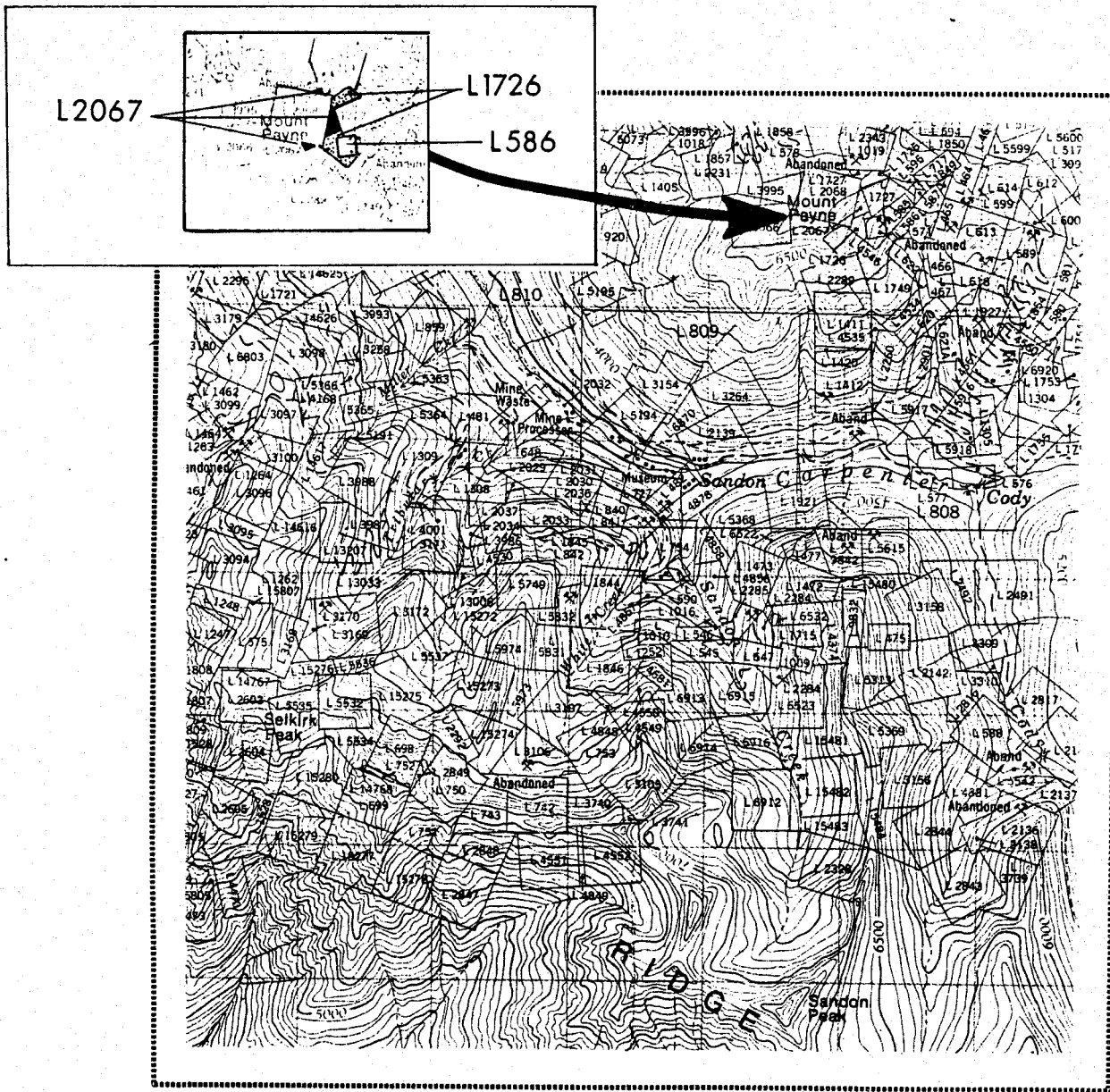
CROWN POINT GROUP 1142 (3)
 L1726 RANDOM SHOT, L2067 SHUNIA, L586 CROWN POINT

MOUNT PAYNE, SANDON AREA, B.C. 82F/14E
 SLOCAN MINING DIVISION



LOCKE B. GOLDSMITH, P.Eng.
 CONSULTING GEOLOGIST

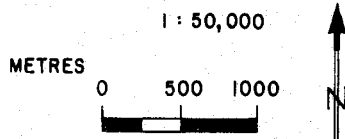
ARCTEX ENGINEERING SERVICES
 NOVEMBER 1984



CLAIM MAP

CROWN POINT GROUP 1142 (3)
L1726 RANDOM SHOT, L2067 SHUNIA, L586 CROWN POINT

MOUNT PAYNE, SANDON AREA, B.C. 82F/14E
 SLOCAN MINING DIVISION



LOCKE B. GOLDSMITH, P.Eng.
 CONSULTING GEOLOGIST



ARCTEX ENGINEERING SERVICES
 NOVEMBER 1984

SOIL GEOCHEMISTRY

Base line for the grid was established along the eastern border of the Crown Point claim at azimuth 350°; line 1+50 N and 1+50 W were completed as the second and third sides of a square. Sample interval is 50 metres. Samples were taken with a narrow, elongate spade at depths of 20 cm below organic debris. Soils are brown to red-brown in colour, and silty in composition.

Analyses for silver and lead were performed by Loring Laboratories Ltd., 629 Beaverdam Rd. N.E., Calgary, Alberta. Samples are screened to -80 mesh and 500 mg of the fine fraction is weighed into test tubes. Aquaregia is added and the sample is digested in a water bath at 100°C for three hours. Test tubes are then bulked to the 10 ml level, mixed, and allowed to settle overnight. The samples are then put through atomic absorption, with appropriate standards, and the results reported in parts per million.

Too few samples were collected to establish statistical levels of background, threshold, and anomalous values. However, from experience accumulated during years of soil sampling in the Slocan sediments, the values of 328 ppm lead and 3.6 ppm silver are anomalous. Most of the remaining silver values belong to a threshold population.

Mine dumps to the east side of the eastern boundary of the Crown Point claim may have contributed metals to elevate the values on the base line. No contamination was evident on lines 1+50 N or 1+50 W.

CONCLUSIONS

Anomalous lead and silver values in soils are present on the property. Lode zones contain silver-lead-zinc mineralization within and adjacent to the area which was sampled.

RECOMMENDATIONS

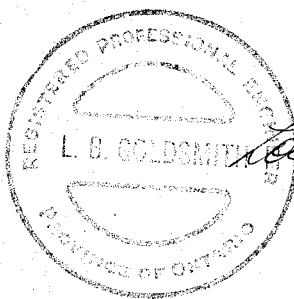
The remainder of the property, including the portions between fractions which are not part of the group, should be covered with geochemical sampling on

a 25-metre-square grid. After geochemical results are evaluated, hand trenching of anomalous zones should be considered. Geological mapping should be undertaken when the soil sampling grid is completed.

COST ESTIMATE

Geochemical sampling	\$ 1,600
Analyses	1,000
Geological mapping	1,200
Engineering, supervision	500
Vehicle, supplies, room, board	600
Trenching	800
Report	1,000
	<hr/>
	6,700
Contingencies @ 10%	670
	<hr/>
Total	\$7,370

Respectfully submitted,



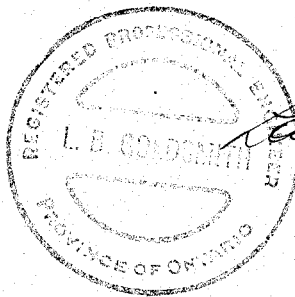
Locke B. Goldsmith
 Locke B. Goldsmith, P.Eng.
 Consulting Geologist

Vancouver, B.C.
 November 9, 1984

ENGINEER'S CERTIFICATE
LOCKE B. GOLDSMITH

1. I, Locke B. Goldsmith, am a Registered Professional Engineer in the Province of Ontario and the Northwest Territories, and a Registered Professional Geologist in the State of Oregon. My address is 301, 1855 Balsam Street, Vancouver, B.C.
2. I have a B.Sc. (Honours) degree from Michigan Technological University and have done postgraduate study in Geology at Michigan Tech, University of Nevada and the University of British Columbia. I am a graduate of the Haileybury School of Mines and am a Certified Mining Technician. I am a member of the Society of Economic Geologists, the AIME, and the Australasian Institute of Mining and Metallurgy, and a Fellow of the Geological Association of Canada.
3. I have been engaged in mining exploration for the past 25 years.
4. I have authored the report entitled, "Soil Geochemistry, Crown Point Mineral Claim Group, Slocan Mining Division, Sandon, B.C.", dated November 9, 1984. The report is based upon fieldwork supervised by the author.
5. I control, with associates, 100% interest in the property.
6. I consent to the use of this report in a prospectus or in a statement of material facts related to the raising of funds.

Respectfully submitted,



Locke B. Goldsmith, P.Eng.
Consulting Geologist

Vancouver, B.C.

November 9, 1984

REFERENCE

Cairnes, C.E. 1935. Description of Properties, Slocan Mining Camp, B.C.
G.S.C. Memoir 184, pp. 1-3, Fig. 1 & 2.

ITEMIZED COST STATEMENT, 1984 PROGRAMME

Wage Scales:

L.B. Goldsmith, consulting geologist, ½ Sept. 17, ½ Nov. 8, ½9, total 1½ days @ \$360/day	\$ 540.00
G. Bennett, prospector, Aug. 3, total 1 day @ \$200/day	200.00

Food:

Total expenditure of \$14.60 = \$14.60/day	14.60
--	-------

Transportation:

4x4 vehicle, 1 day	\$45.00	
58 km @ \$0.30/km	17.40	
Gas	<u>8.25</u>	
	\$70.65	70.65

Analyses:

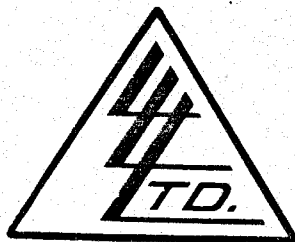
9 samples cost \$31.05 = \$3.45/sample	31.05
--	-------

Report:

Drafting, typing, photocopying, prints, materials	<u>431.20</u>
Total	\$1,287.50

APPENDIX

To: L.B. GOLDSMITH
 #301, 1855 Balsam Street
 Vancouver, B.C. V6K 3M3
 cc: Silverton



File No. 26709
 Date September 4, 1984
 Samples Soil Samples
 Series: CP

Certificate of
ASSAY of
LORING LABORATORIES LTD.

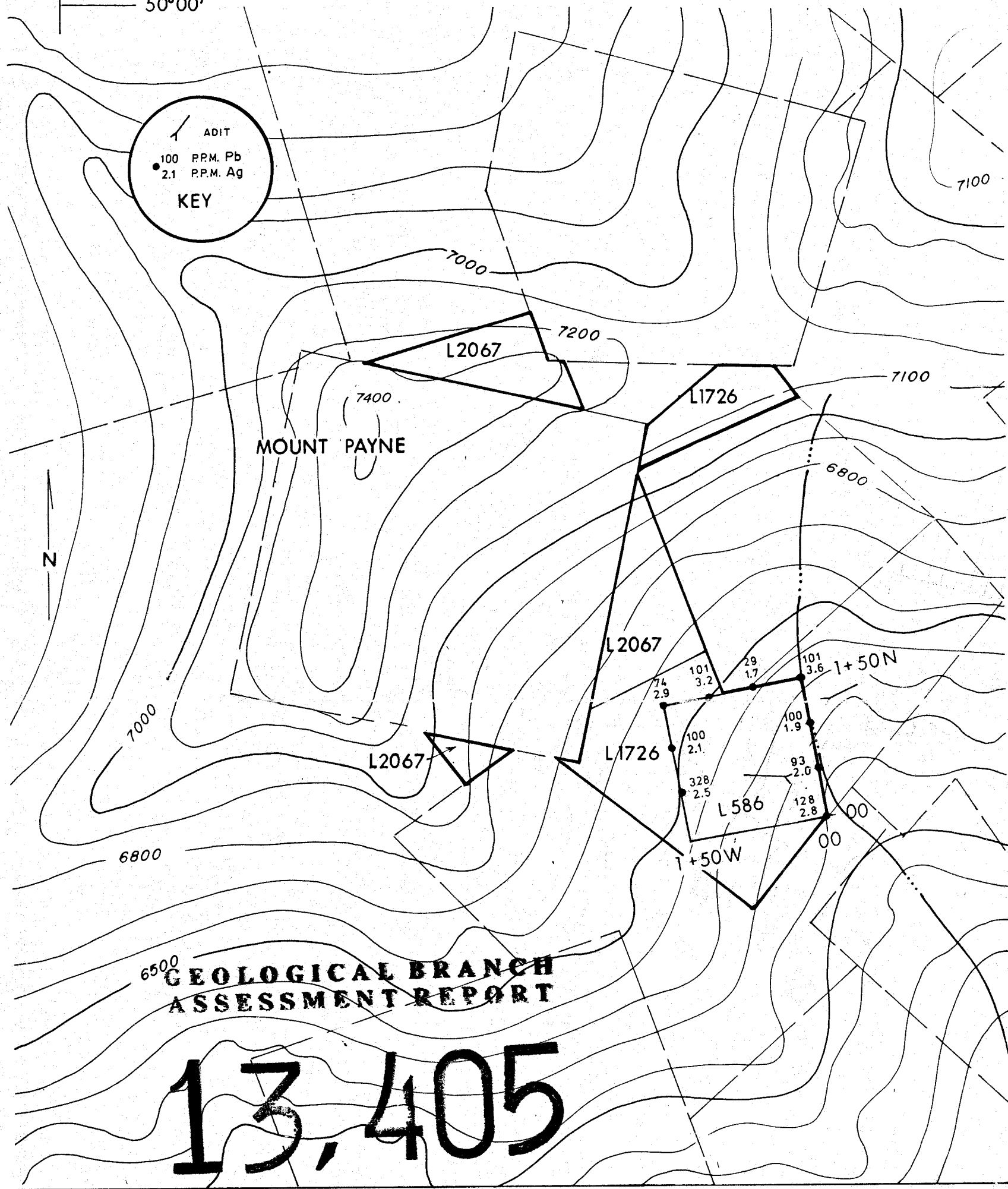
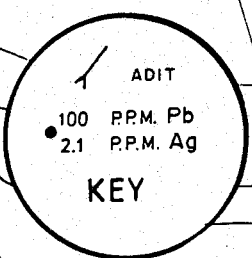
SAMPLE No.	PPM Pb	PPM Ag
<u>"Geochemical Analysis"</u>		
CP-0+00N-BL	128	2.8
-0+50N-BL	93	2.0
-0+50N-1+50W	328	2.5
-1+00N-BL	100	1.9
-1+50N-BL	101	3.6
CP-1+50N-0+50W	29	1.7
-1+00W	101	3.2
-1+50W	74	2.9
CP-1+00N-1+50W N	100	2.1

I Hereby Certify THAT THE ABOVE RESULTS ARE THOSE
 ASSAYS MADE BY ME UPON THE HEREIN DESCRIBED SAMPLES

Rejects Retained one month.
 Pulps Retained one month
 unless specific arrangements
 made in advance.

Assayer

117° 13'
50° 00'



**GEOLOGICAL BRANCH
ASSESSMENT REPORT**

13,405

0 50m 100m
1: 5000

CROWN POINT GROUP

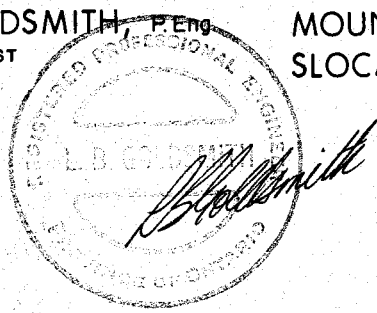
1142 (3)

L1726 RANDOM SHOT, L2067 SHUNIA, L586 CROWN POINT

LOCKE B. GOLDSMITH P.Eng
CONSULTING GEOLOGIST

MOUNT PAYNE, SANDON AREA, B.C. 82F/14E
SLOCAN MINING DIVISION

ARCTEX ENGINEERING SERVICES
NOVEMBER 1984



1984 LEAD-SILVER GEOCHEMISTRY