

ASSESSMENT REPORT

TYPE: Road rehabilitation & trenching

CLAIMS: NB 1, NB 2, NB 3, NB 4, NB 5.  
Record Nos 3970, 4531, 5508, 5509, 5510

MINING DIVISION: Kamloops

NTS LOCATION: 82M/5 West

LATITUDE: 51° 20'N

LONGITUDE: 119° 52'W

OWNER: Westech Resources Limited  
Suite # 903 Chancery Place,  
805 Hornby Street,  
Vancouver, B.C. V6Z 2G3

OPERATOR: Westech Resources Limited

AUTHOR: Leo Loranger

DATE: March 12th, 1985

**GEOLOGICAL BRANCH  
ASSESSMENT REPORT**

**13,434**

TABLE OF CONTENTS

Page No.

1-Statement of expenditures -----	1
2-Location Map-----	11
3-Claim Map-----	111
4-Location and access-----	1
5-Physiography and vegetation-----	1
6-History-----	2-3
7-Geology and Mineralization-----	4-5-6
8-Geological, Geochemical, Geophysical Features	Map 3
9-Appendix Au. Map showing <sup>s</sup> cleaned out roads and trenches.	

Qualifications of Writer:

I, Leo Loranger have worked in Mining Exploration for the past 24 years. five years for Noranda Mines Exploration sixteen years under Mr. Nels Vollo M.Sc. P.Eng.. The last two years as a Contractor.

  
Leo Loranger

STATEMENT OF EXPENDITURES

1 - Contract of bulldozer work 132hrs. @ \$50.00---	\$6,600.00
2 - Mobiliazation and Demobilization bulldozer----	\$ 240.00
3 - Supervision and sampling 12 days @ \$150.00----	\$1,800.00
4 - 4X4 Truck rental 12 days @ \$50.00/day-----	\$ 600.00
5 - Assays and geochemical analysis-----	\$ 477.00
6 - Consulting costs-----	\$ 435.00
	total
	\$10,152.00

# KERR, DAWSON AND ASSOCIATES LTD.

Consulting Geologists and Engineers

No. 206 - 310 NICOLA STREET • KAMLOOPS, B.C. V2C 2P5 • TELEPHONE (604) 374-0544

November 30, 1984

Westech Resources Ltd.  
#903 - 805 Hornby Street  
Vancouver, B. C. V6Z 2G3

Dear Sirs:

This letter will serve as an addendum to my report of April 23, 1984.

During the period October 22, 1984 to November 5, 1984, a programme of road rehabilitation and trenching was carried out on the NB property at North Barriere Lake. The results of this work were examined by the writer on November 21, 1984.

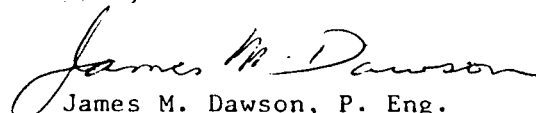
A total of 450 meters of trenching was performed in three cuts in the Area C anomaly and approximately 7 km. of old roads were rehabilitated. A number of soil samples and grab samples of bedrock were taken in the southernmost trench and returned anomalous values in gold, copper and zinc.

The following is a statement of the cost of this programme:

(1) Contract bulldozer work 132 hours @ \$50/hr.	\$ 6,600.00
(2) Mobilization and demobilization - bulldozer	240.00
(3) Supervision and sampling 12 days @ \$150/day	1,800.00
(4) Truck rental 12 days @ \$50/day	600.00
(5) Assays and geochemical analyses	477.00
(6) Consulting costs	<u>435.00</u>
<b>TOTAL . . . . .</b>	<b><u>\$ 10,152.00</u></b>

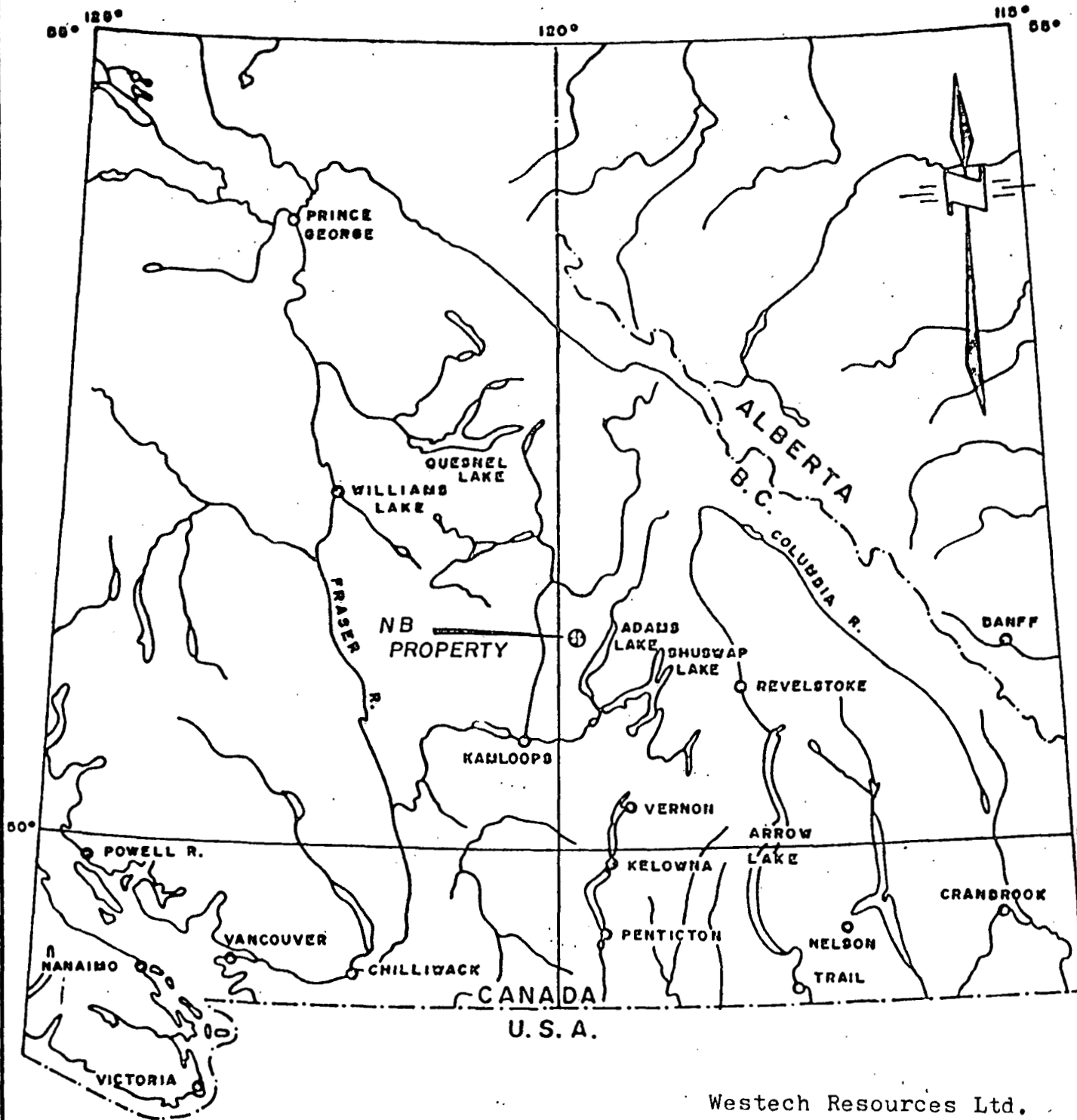
respectfully submitted,

KERR, DAWSON AND ASSOCIATES LTD.

  
James M. Dawson, P. Eng.  
Geologist

JMD/ld

Map 1

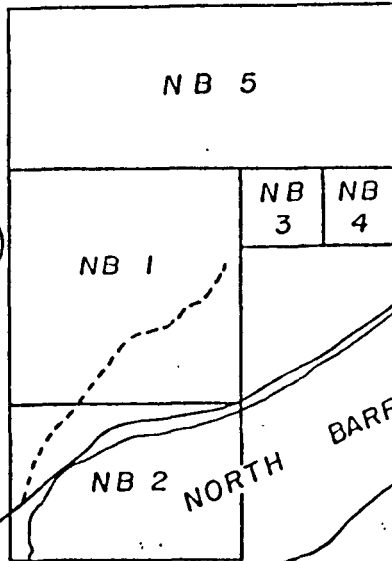


Westech Resources Ltd.  
Location Map  
NB Property  
Kamloops Mining Division  
Scale 1" = 64 Miles

Map - 2



Harper Creek



NB 5

NB 1

NB  
3

NB  
4

NB 2

NORTH BARRIERE LAKE

Barriere River

WESTECH RESOURCES LTD.

CLAIM MAP

NB PROPERTY

KAMLOOPS MINING DIVISION

Scale 1: 50,000

LOCATION AND ACCESS:

The property is located in south central British Columbia about 80 km north-northeast of Kamloops and approximately 25 km northeast of the town of Barriere on the North Thompson Highway. The approximate geographic center of the property is at  $51^{\circ} 20'$  north and  $119^{\circ} 51'$  west.

The property is accessible via about 32 km of paved and well maintained gravel road northeast from Barriere. Barriere is located about 60 km north from Kamloops on Highway No. 5.

PHYSIOGRAPHY AND VEGETATION:

The property lies on a south facing slope immediately north of North Barriere Lake. This is a moderate slope with a prominent flat to rolling portion near the boundary of NB-1 and NB-5. This probably represents the contact area between the Baldy Batholith and the older Eagle Bay rocks. Elevations vary from approximately 2100 feet a.s.l. at the lake to about 4500 feet a.s.l. near the north property boundary.

The entire property is heavily wooded with mature spruce and fir. Local patches of alder and birch are common.

Outcrops are relatively scarce on this property and glacial overburden may be as much as 5 to 10 meters thick.

HISTORY:

Mineralization was probably first discovered on the subject property in the early 1900's. The first record of work is in 1927 when 2 showings now present on the property were known as the Wahwah (Area A) and Lucky Boy (Area C) respectively. One 150 foot long tunnel is mentioned in 1927 and subsequently at least 2 others were driven both of which are less than 100 feet long.

The property is next mentioned in 1962 when it was controlled by Barriere Lake Mines Ltd. Over the next 3 years this company carried out trenching, road building, a magnetometer survey and drilled at least 30 holes aggregating about 4500 feet. Much of this work was performed on the mineralization within area A (see figure MAP-3) but unfortunately no records of this work are currently available.



In 1966, Scurry Rainbow Oil Ltd. gained control of the property and performed geological and geophysical surveys. Twelve diamond drill holes were bored totalling 3280 feet. Most of this work was carried out in area A.

In 1970, the property was controlled by Barriere Lake Minerals Ltd. This company drilled 5 core holes totalling 648 feet.

Craigmont Mines Ltd. optioned the property in 1972. This company performed an induced polarization survey and collected 361 soil samples which were analysed for copper and zinc. The option was dropped in 1973.

In 1976, the property was optioned by Canadian Superior Exploration Ltd. This company ran magnetic and electromagnetic surveys around area A (Wahwah showing) and drilled three core holes aggregating 1061 feet. The option was dropped after one year and the ground lapsed in 1981.

In 1983, the ground was acquired by Westech Resources Ltd. and an evaluation report was written by Jay Murphy, P. Eng. In late 1983 and early 1984, magnetometer and VLF electromagnetic surveys were performed as well as the collection of 91 soil samples. These samples were analysed for copper, zinc and gold.

GEOLOGY AND MINERALIZATION:

The property is underlain by intermediate to felsic volcanic rocks and associated volcanoclastic sediments of the Mississippian (?) Eagle Bay Formation, intruded by the Cretaceous Baldy Batholith. The Eagle Bay rocks have been folded and metamorphosed to lower greenschist facies.

Preto (1981) includes the older rocks underlying the subject property in his unit 7a of the Eagle Bay Formation and describes them as follows:

"Intermediate to felsic phyllite and fine grained schist derived mostly from felsic tuffs and lithic tuffs; locally grading into minor, thinly laminated sericite-chlorite schist and phyllite."

The Eagle Bay Formation outcrops from Shuswap Lake to the Clearwater area and contains numerous occurrences of stratiform massive to semi-massive sulphides as well as areas of disseminated and fracture controlled sulphides. For the most part these consist of pyrite and or pyrrhotite with lesser amounts of chalcopyrite, sphalerite and subordinate galena.

The extensive work on the NB property has outlined 3 main areas of interest. These areas are shown on Figure MAP-3 as areas A, B and C using the designation of Murphy (1983).

Area A is a large west northwest trending zone outlined by a 10% frequency effect induced polarization anomaly. It contains two known massive sulphide horizons as well as numerous thin sulphide layers between and adjacent to the main bands. Other massive sulphide layers were suspected by previous workers because of several float concentrations of massive sulphide boulders remote from the known showings.

Work by Canadian Superior Exploration Ltd. in 1976 concluded that there is a lower (southwestern-most) sulphide lense as much as 20 feet thick and an upper layer consisting of "a zone of one to four near massive sulphide beds, 2 to 8 feet in thickness over a stratigraphic interval of approximately 40 to 50 feet".

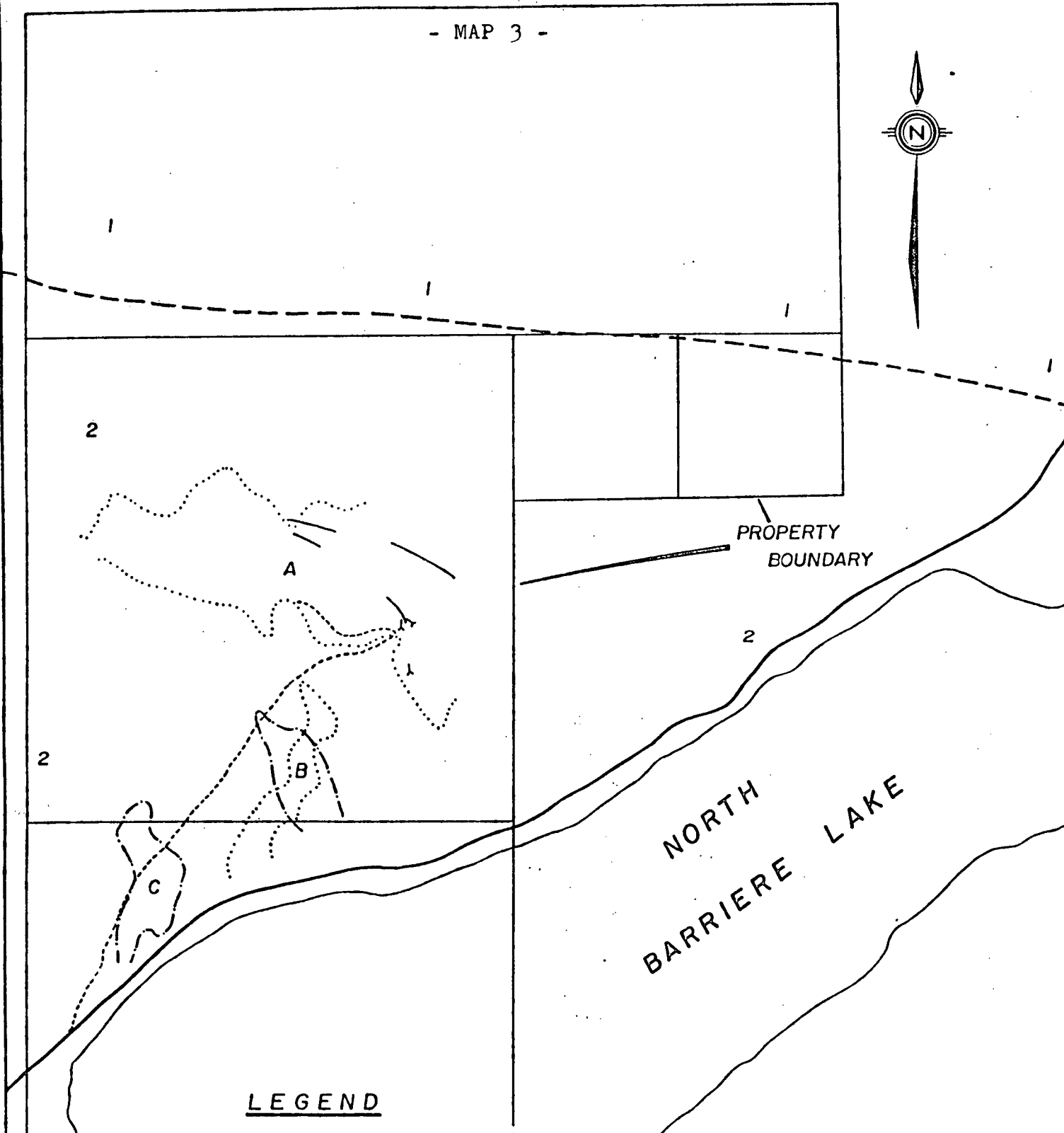
Mineralization in these sulphide layers consists primarily of pyrrhotite and/or pyrite with lesser chalcopyrite, locally significant sphalerite and scattered traces of galena. Although locally copper may grade as much as "an estimated 5 - 6% over 5 feet" for the most part grades are less than 1% copper. Intersections in four Scurry Rainbow holes quoted in Rae (1977) varied from 0.15% copper over 26 feet to 0.84% copper over 16 feet.

It is interesting to note that although there are local spot highs there is no significant copper soil anomaly within area A.

Area B is outlined by a more or less coincident, northerly-trending copper soil geochemical anomaly and a 10% frequency effect induced polarization anomaly. There are no known occurrences of copper or copper-zinc mineralization in this area, although a zinc soil, geochemical anomaly occurs adjacent to this area, to the east.

Area C (see figure MAP-3) is outlined by a northerly-trending copper soil geochemical anomaly and covers a portion of the area where the early drilling was carried out by Barriere Lake Mines Ltd. This area seems to have been neglected by much of the later work as there is no record of any geological mapping and there is some question as to whether it was adequately covered by the induced polarization survey. The writer noted massive sulphide mineralization containing minor chalcopyrite in outcrop and float at this locality during an examination of the ground in April, 1984.

Limited work by Westech Resources Ltd. in late 1983 and early 1984 indicates that there is a gold soil geochemical anomaly more or less coincident with the copper geochemical anomaly and that this anomaly is still open to the north and south.



PROPERTY  
BOUNDARY

NORTH  
BARRIERE LAKE

LEGEND



BALDY BATHOLITH - QUARTZ MONZONITE &  
GRANITE.



EAGLE BAY FORMATION - SERICITE SCHIST, PHYLLITE,  
CHLORITE - SERICITE SCHIST - COMMONLY PYRITIC



MASSIVE SULPHIDE BANDS



COPPER GEOCHEMICAL ANOMALY



OUTLINE OF INDUCED POLARIZATION ANOMALY



ADIT



ACCESS TRAIL



GEOLOGICAL CONTACT

WESTECH RESOURCES LTD.  
GEOLOGICAL, GEOCHEMICAL,  
GEOPHYSICAL FEATURES  
KAMLOOPS MINING DIVISION  
SCALE 1:16,667

NB Lower Trench

**KAMLOOPS  
RESEARCH & ASSAY  
LABORATORY LTD.**

B.C. CERTIFIED ASSAYERS

912 LAVAL CRESCENT — KAMLOOPS, B.C.  
V2C 5P5  
PHONE: (604) 372-2784 — TELEX: 048-8320

**GEOCHEMICAL LAB REPORT**

Mr. Leo Loranger,  
6545 Beaver Crescent,  
Kamloops, B.C.  
V2C 4V2

DATE November 27, 1984

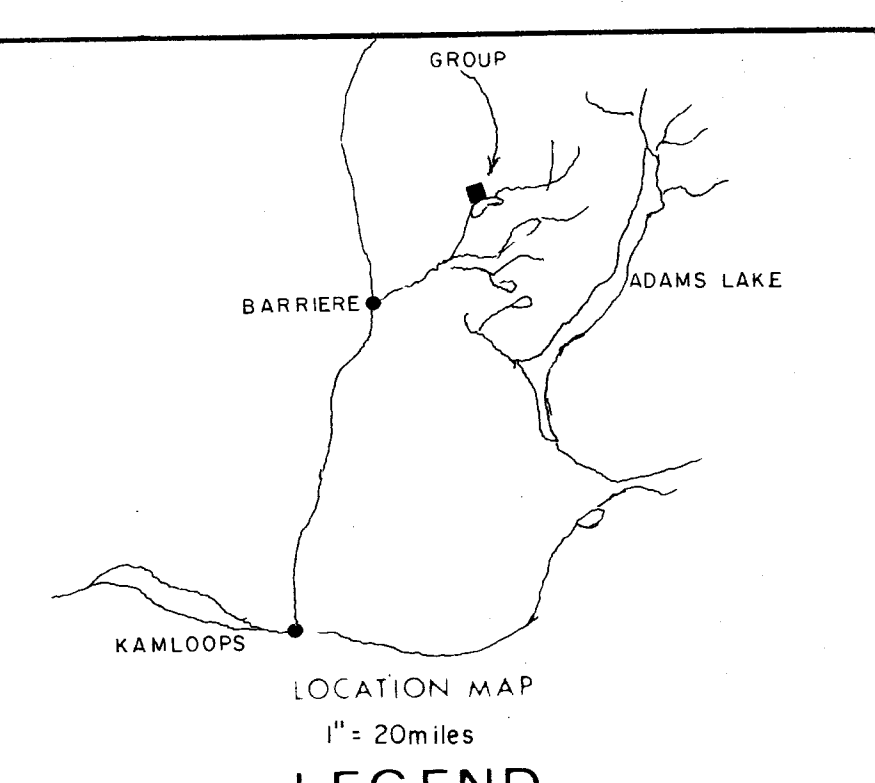
ANALYST \_\_\_\_\_

FILE NO. \_\_\_\_\_

FILE NO. G-1255

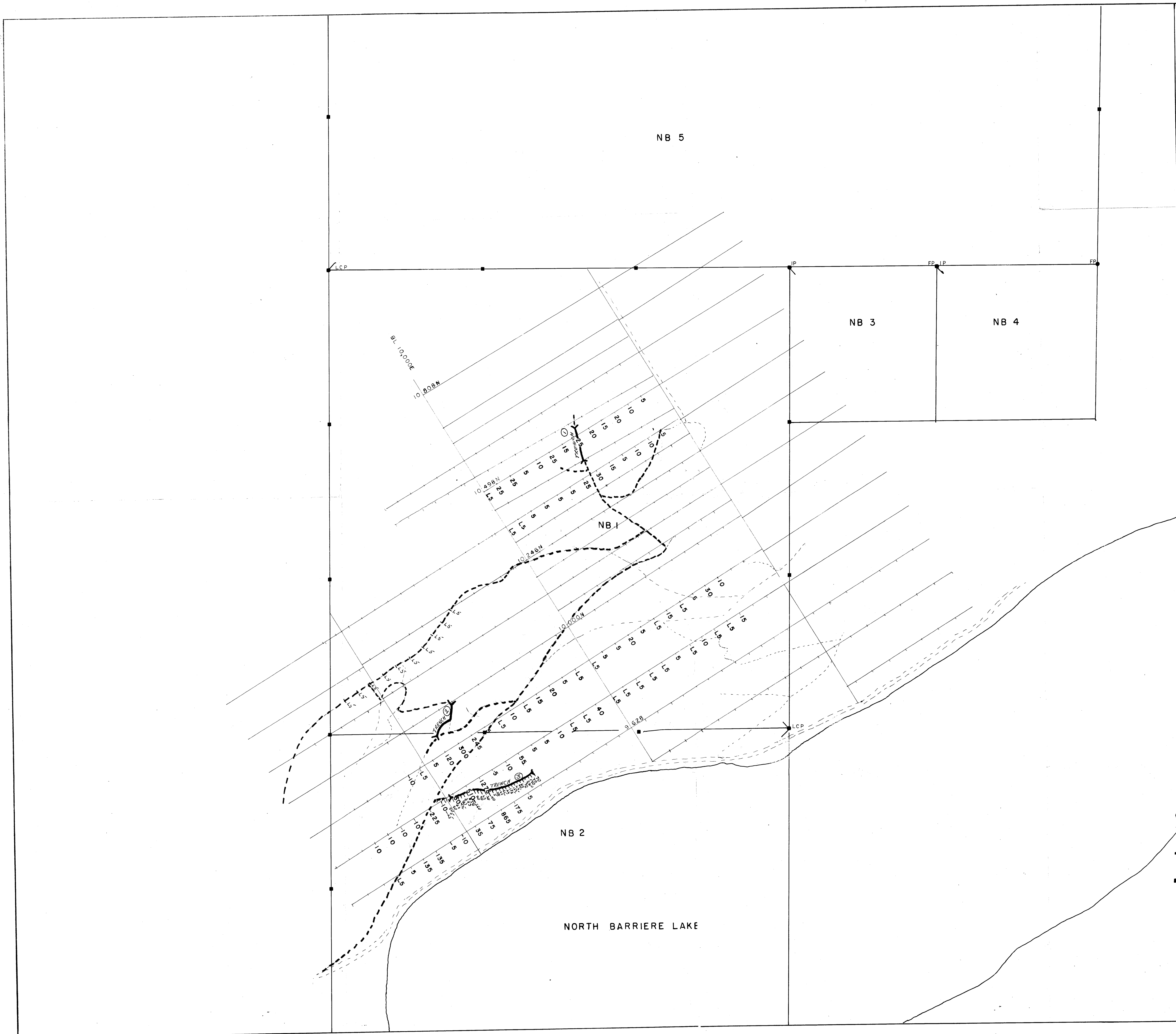
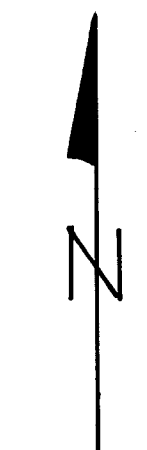
AL NO.	IDENTIFICATION	ppb Au	ppm Cu	ppm Zn	ppm Ag			
1	150	70	612	255	.4			
2	151	70	650	272	.5			
3	152	190	680	201	.5			
4	153	260	428	185	.5			
5	154	70	397	211	.3			
6	155	65	753	273	.4			
7	156	60	369	175	.2			
8	157	L.5	761	178	.1	L means "less than"		
9	158	155	G4000	121	.4			
10	159	175	836	139	.4	G means "greater than"		
11	160	L5	475	167	.3			
12	161	L5	487	176	.3	Au Method: -80 Mesh		
13	162	L5	602	159	.4	Fire Assay		
14	163	100	571	160	.3	Atomic Absorption		
15	164	5	292	146	.2			
16	165	40	638	186	.4	Cu, Zn, Ag Method: -80 Mesh		
17	166	20	481	186	.4	Hot Acid Extraction		
18	167	L5	200	175	.5	Atomic Absorption		
19	168	90	656	150	.4			
20	169	20	335	185	.5			
21	170	260	1450	130	.5			
22	171	550	4000	201	.5			
23	172	395	2380	121	.5			
24	173	90	2280	108	.5			
25	174	45	552	82	.5			
26	175	65	830	105	.4			
27	176	90	818	146	.4			
28	177	90	675	134	.3			
29	178	5	790	107	.4			
30	179	L5	532	134	.3			





**LEGEND**  
 Samples from "B" horizon  
 Analysis - Atomic absorption 80mesh Fire assay  
 By - Kamloops Research & Assay Laboratories  
 Extraction - hot aqua regia  
 Readings in ppb

- Road Rehab.
- == Road improved
- - - four wheel drive
- Limit of timber
- Open swamp meadow
- TRENCH
- Claim post known
- Claim post assumed
- Drillhole diamond
- Drillhole percussion



**GEOLOGICAL BRANCH  
 ASSESSMENT REPORT**  
**13,434**

LEO LORANGER Contract Mining Services  
 KAMLOOPS, B.C.  
**WESTECH RESOURCES LTD.**  
 VANCOUVER B.C.  
 82M/5 NB  
**GEOCHEMICAL PLAN**  
 TOTAL Au  
 100 0 100 Metres  
 Scale: 1:5000 Date: 12/3/85  
 Drawn by: L.L.