

85-166-13562
3/86

REPORT
ON
GEOLOGY AND MAGNETOMETER SURVEY
OF THE
WOLF #1&2 CLAIMS
CARIBOO MINING DIVISION
NTS 93A/12W
Lat.: 52° 33' N. Long.: 121° 50' W.

for

GEORGIA STRAIT RESOURCES LTD.

**GEOLOGICAL BRANCH
ASSESSMENT REPORT**

13,562

By:
Uwe Schmidt, B.Sc. and
Chris J. Sampson, P.Eng.
Consulting Geologists

December 14, 1984

TABLE OF CONTENTS

	Page
1. SUMMARY AND RECOMMENDATIONS	1
2. INTRODUCTION	2
3. PROPERTY, LOCATION AND ACCESS	2
4. PHYSIOGRAPHY	3
5. HISTORY	3
6. REGIONAL GEOLOGY	4
7. ECONOMIC GEOLOGY	5
7.1 CARIBOO-BELL	6
7.2 QR DEPOSIT	7
7.3 FRASERGOLD PROPERTY	7
8. FIELD WORK	8
9. PROPERTY GEOLOGY	8
10. MAGNETOMETER SURVEY	9
11. CONCLUSIONS	10
12. SUMMARY OF EXPENDITURE	11
13. ESTIMATE OF COST	12
14. REFERENCES	14

Appendices

Appendix A Certificates of Qualifications

List of Illustrations

Fig.		Scale	Following Page
-----		-----	-----
1	Location	1:7,000,000	2
2	Claim Location	1:50,000	2
3	Cariboo Gold District Property Map	1:250,000	2
4	Geology	1:125,000	4
5	Wolf 1 Geology	1:5,000	in pocket
6	Wolf 2 Magnetic Survey	1:5,000	in pocket
7	Wolf 2 Magnetic Survey Grid	1:5,000	in pocket

1.SUMMARY AND RECOMMENDATIONS

The Wolf #1&2 claims are located northeast of Williams Lake, B.C., in the Quesnel Trough, a belt of lower Mesozoic volcanic and sedimentary rocks which host two important gold deposits and other significant gold occurrences. The claim group is located 12 km west of the Cariboo-Bell porphyry copper-gold deposit, the largest known deposit in the area.


A field program of line cutting, geological mapping, prospecting, grid surveying and magnetometer surveying was carried out during three periods within the time interval of September to early December, 1984. Line cutting and reconnaissance geological mapping were completed on both claims. A ground magnetometer survey was completed on the Wolf #2 claim, but two instrument failures and deep snow prevented the continuation of the survey onto the Wolf #1 portion of the grid.

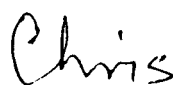
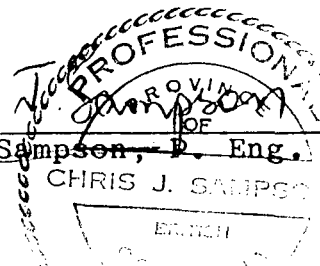
Results to date have outlined a northwest magnetic trend which parallels regional magnetic and geologic trends. The claims are underlain by upper Triassic volcanic, sedimentary rocks and Tertiary volcanic rocks. The upper Triassic rocks are favourable host rocks to gold and copper-gold mineralization

A completion of the magnetometer survey is recommended onto the Wolf #1 portion of the grid and geochemical soil sampling is recommended at a 50 metre sample spacing along lines spaced at 200 metres.

A second phase of fill-in soil sampling and excavator trenching is recommended if warranted by first phase results. These programs are estimated to cost \$63,074.00.

Respectfully Submitted,


Uwe Schmidt, B.Sc.


Chris J. Sampson, P. Eng.


2. INTRODUCTION

In September, 1984 the writer was commissioned by Georgia Strait Resources Ltd. to carry out a limited exploration program on their Wolf#1 and #2 property near Williams Lake, B.C.

A program of line cutting, geological mapping, grid surveying and ground magnetometer survey was carried out during three periods in September, October-November and November-December, 1984.

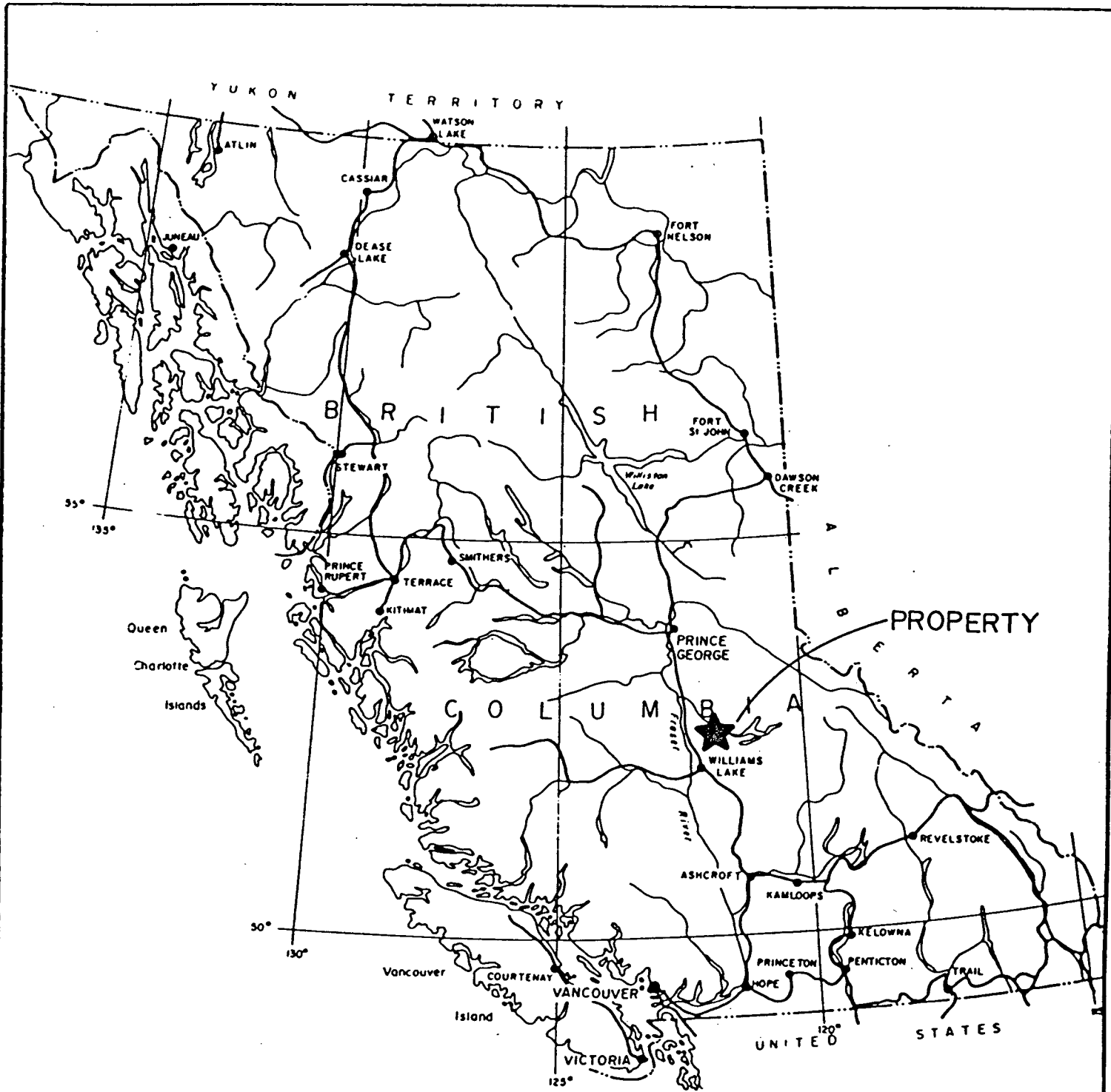
The program covered by this report is the implementation of the initial phase of a systematic grid exploration program of the property. The program emphasized line cutting and a magnetometer survey because of the flat, wooded featureless character of the property.

Bedrock exposure is limited to a short section of Miles creek in the northwest corner of Wolf #1 claim. It was the aim of this program to use the magnetometer survey as a mapping tool to help outline target areas for geochemical survey. To date, work has defined only a limited area of bedrock and half the intended area was covered by the magnetometer survey. Both surveys suffered from the adverse winter conditions and earlier than usual snow accumulation. Two instrument failures delayed the start of the magnetometer survey and eventually this delay allowed a snow depth to accumulate which prevented access to the Wolf #1 half of the grid.

3. PROPERTY, LOCATION AND ACCESS

The Wolf #1&2 property consists of two 20 unit mineral claims having a total area of 1000 hectares. The property is located in the Cariboo Mining Division, 45 km northeast of Williams Lake and is accessible by vehicle from Williams Lake via the Likely road. This partially paved all-weather road heads northward from 150 Mile House, which is located 15 km east of Williams Lake on Highway 97. The claims are located west of the Likely road, 8 km north of the junction of the Likely and Gavin Lake roads, a distance of approximately 75 km from Williams Lake.

The geographic coordinates of the approximate centre of the claims are 52° 33' N. latitude and 121° 50' W. longitude and the property is located on NTS 93A/12W claim map.

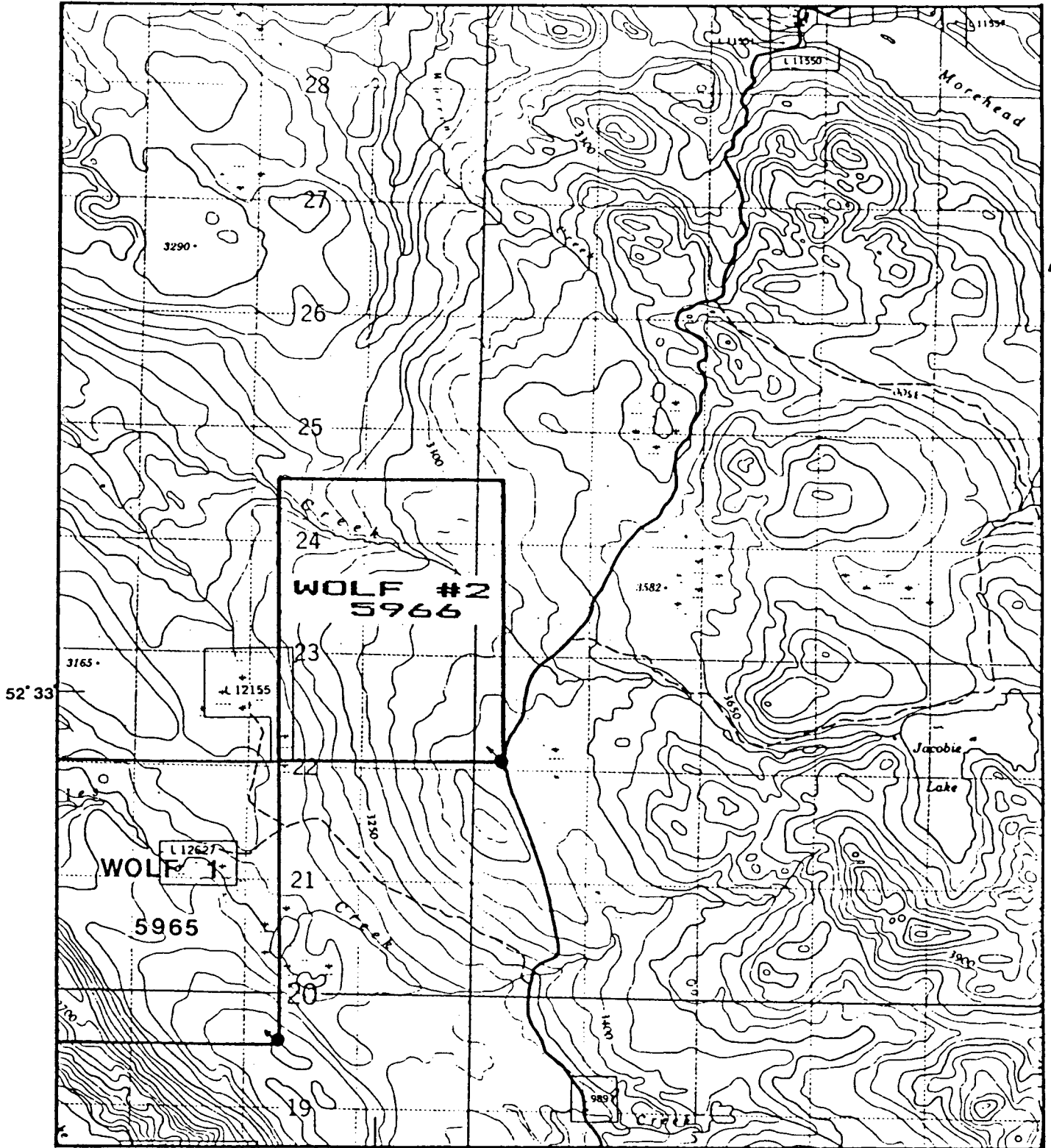


GEORGIA STRAIT RESOURCES LTD.
Fig. 1

LOCATION

To Accompany Report Dated Dec., 1984
Scale=1:7,000,000

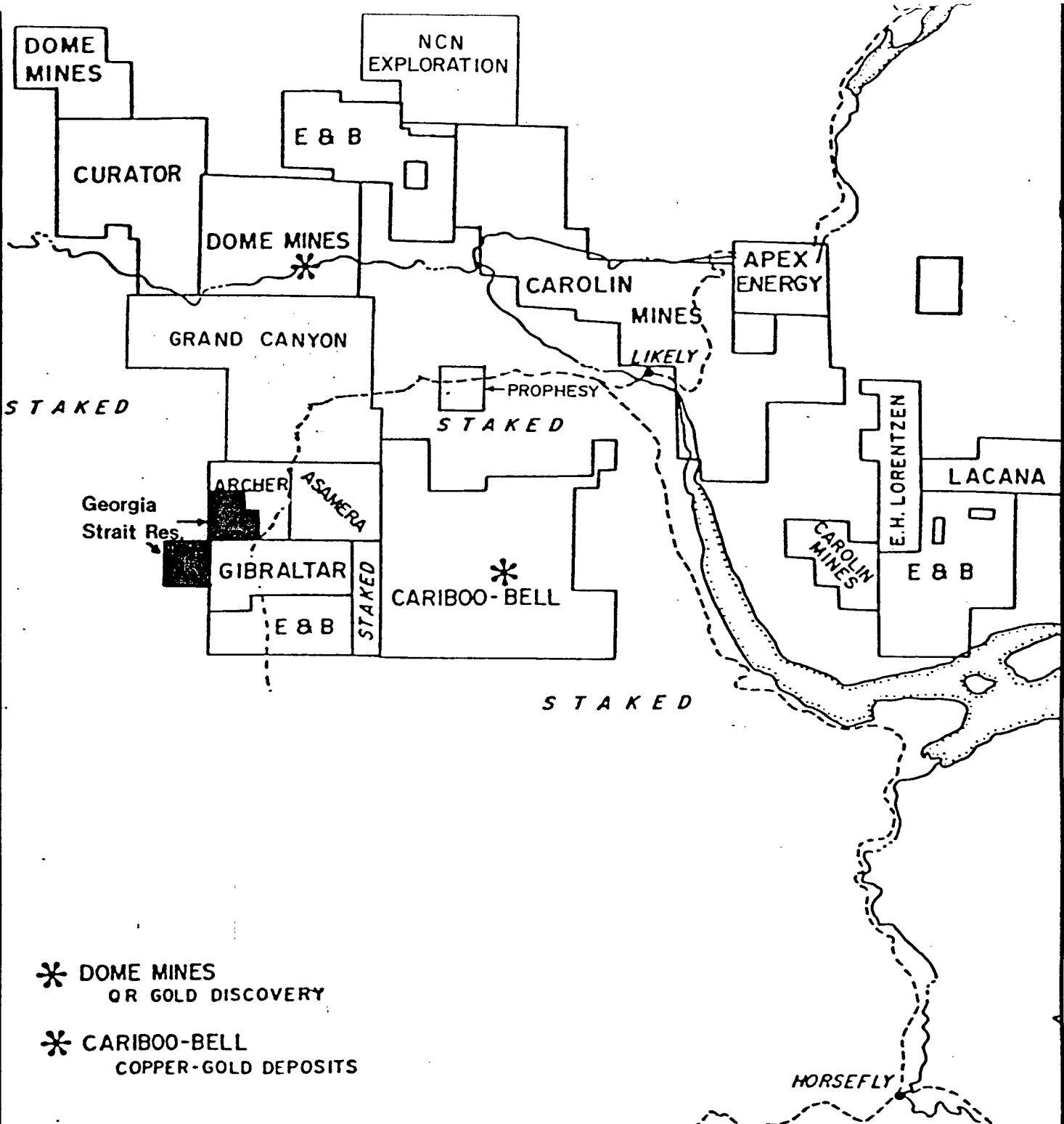
121° 50'



52° 33'



GEORGIA STRAIT RESOURCES LTD.
Fig. 2
CLAIM LOCATION
Cariboo Mining Division
NTS 93A/12W
To Accompany Report Dated Dec., 1984
Scale = 1:50,000



GEORGIA STRAIT RESOURCES LTD.
 Fig. 3
**CARIBOO GOLD DISTRICT
 PROPERTY MAP**
 NTS 93A

To Accompany Report Dated Dec., 1984
 Scale = 1:250,000

The claims are wholly owned by Georgia Strait Resources Ltd. The details of the claims are as follows:

CLAIM NAME	TYPE	NO.OF UNITS	TAG NO.	RECORD NO.	RECORDING DATE
Wolf #1	Mineral	20	16840	5965	March 21, 1984
Wolf #2	Mineral	20	16841	5966	March 21, 1984

During this program and an earlier examination of the Wolf #2 claim all claim boundary lines and corner posts were examined. The claim boundaries are well marked and appear to have been staked in accordance with staking regulations.

4. PHYSIOGRAPHY

The property is located near the southern boundary of the Fraser Basin, a sub-division of the Interior Plateau. On a large scale the Fraser Basin is characterized by low relief with flat to rolling surfaces which for the most part lie below elevations of 900 m. Few bedrock exposures occur in these predominantly drift covered areas with poorly organized surface drainage, numerous lakes and poorly drained depressions. Glacial ice moved in a northwest direction in the vicinity of the property .

Elevations on the property range from 940 to 1070 metres. The terrain is flat to gently rolling with elevations decreasing to the west. Steeper slopes are restricted to the banks and tributaries of Jacobie and Miles Creeks. The area is covered by an open forest of jackpine, spruce, fir, minor poplar and birch.

5. HISTORY

The area was first prospected during the 1860 Cariboo gold rush but it was not until 1933 that lode mining began at the Cariboo Gold Quartz mine at Wells, 65 km north-northeast of the property. This was followed by the adjacent Island Mountain mine which commenced production in 1934. These mines operated until 1967.

Although many of the copper occurrences in the area were probably known at the time of placer gold exploration, records of systematic exploration did not appear until after the discovery of surface exposures of the Cariboo-Bell deposit, in 1964.

Extensive mineral exploration for porphyry copper mineralization has been carried out intermittently in the area until the late 1970's when most of the known alkalic plutons were staked and explored. More recently, since the discovery of the QR deposit, attention has focussed on the copper-gold porphyry and stratabound replacement mineralization found in the alkalic porphyry environment.

Assessment records indicate that an area between Jacobie and Trio Lakes was explored for copper in 1966 and in 1972. Programs of geochemical sampling, magnetometer surveys and trenching located intrusive rocks and copper mineralization in basic volcanic rocks. The mineralization is located approximately 5 km east of the property.

E. & B. Exploration and Archer Cathro and Assoc. Ltd on behalf of Rockridge Resources were actively exploring in the vicinity of the property during the 1984 field season. Rockridge's ACBC 1 claim lies to the northeast and partly overlaps the Wolf #2 claim. This property was explored by detailed mapping, geochemical soil sampling and magnetometer surveys.

There is no record of previous exploration on the Wolf #1 & 2 property.

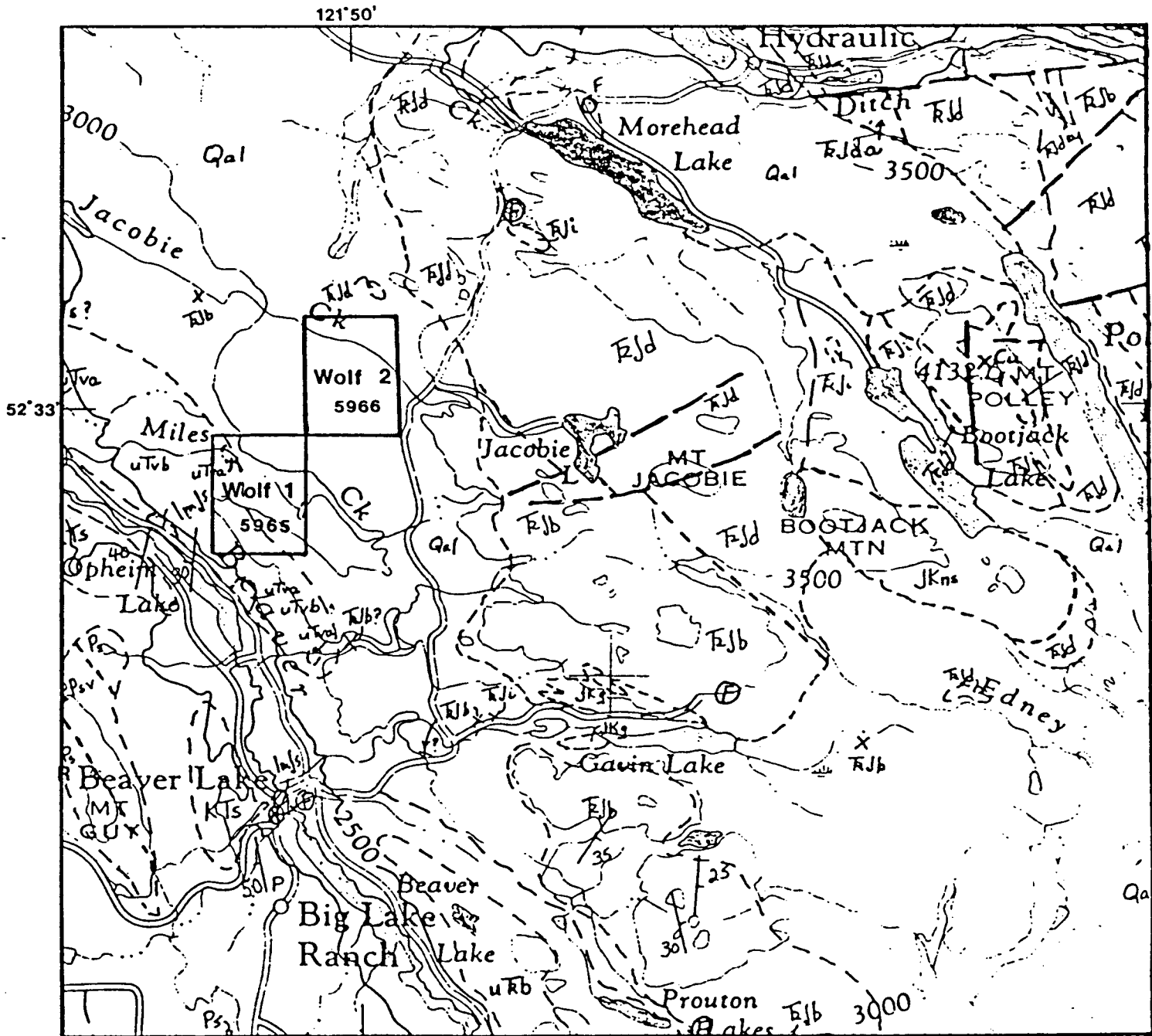
6.REGIONAL GEOLOGY

The Wolf #1&2 claims lie within the Quesnel Trough, a narrow belt of Mesozoic volcanic and sedimentary rocks. The Quesnel Trough is a division of the Intermontane tectonic belt which is one of five major tectonic elements of the Canadian Cordillera.

The lithologies of the Quesnel Trough have been traced southward to beyond the international border and northwestward beyond Prince George. The Mesozoic succession near the property and northward has been assigned to the Takla Group (Tipper, H.W. et al 1979). To the south, the lower, Upper Triassic sequences have been assigned to the Nicola Group.

The trough is fault bounded on the west and east. To the west, the trough lies in fault contact with Paleozoic rocks of the Pinchi Belt. To the east the boundary between the trough and Intermontane Belt is marked by a major shear zone. Large scale tectonic imbrication and mylonitization on both sides of the zone suggest an eastward thrusting of the Intermontane over the Omineca Belt (REES, 1981).

The Quesnel Trough was the site of extensive island-arc type volcanic and sedimentary deposition from



GEORGIA STRAIT RESOURCES LTD.
Fig. 4

GEOLOGY
(after Campbell 1978)
To Accompany Report Dated Dec., 1984
Scale = 1:125,000

LEGEND

QUESNEL LAKE (93-A) MAP-AREA

PLEISTOCENE AND RECENT

Qal Glacial deposits, till, gravel, sand, silt, alluvium; few scattered unmapped outcrops.

TERTIARY MIOCENE AND PLEISTOCENE

uTva Plateau basalt; olivine basalt, feldspar porphyry basalt, minor breccia, conglomerate and sandstone; uTvb areas underlain by plateau basalt; few scattered unmapped outcrops; uTvc, coarse feldspar porphyry, may be older intrusions.

QUESNEL and OMINECA BELTS

QUESNEL BELT

JURASSIC AND CRETACEOUS

JKg Granodiorite, quartz monzonite, quartz diorite

JKns Nepheline syenite, syenite

CRETACEOUS AND (?) TERTIARY

KTs Conglomerate, sandstone, shale

QUESNEL RIVER GROUP (uTva to ImJs)

JURASSIC

LOWER AND (?) MIDDLE JURASSIC PLIENSCHACHIAN TO (?) BAJOCIAN

ImJs Conglomerate (local granitic clasts), greywacke, shale

TRIASSIC AND JURASSIC

UPPER TRIASSIC AND LOWER JURASSIC

RJi Syenite, monzonite, diorite; sub-volcanic intrusive phases, probably mainly lower Jurassic

NORIAN TO SINEMURIAN

RJd Purple or maroon, minor grey and green basaltic and felsitic breccia, minor flows, tuff, sandstone and limestone. **RJda**; purple and maroon basalt with analcite phenocrysts

NORIAN AND (?) HETTANGIAN

RJc Green and purple conglomerate and sandstone

NORIAN AND (?) YOUNGER

RJb Augite porphyry basalt breccia, minor flows, tuff and tuffaceous argillite; local andesitic basalt

RJa Basaltic tuff and breccia, generally fine-grained; argillite, flows, chert

PINCHI BELT

CACHE CREEK GROUP (PPub to Ps)

PERMIAN AND (?) OLDER

Ps Grey limestone, minor greenstone chert and argillite

PENNSYLVANIAN AND/OR PERMIAN

PPsv Argillite, chert, greenstone; minor limestone and serpentinite

late Triassic to early Jurassic time. The base of the trough is an Upper Triassic black argillite unit. This unit is exposed near the eastern margin of the trough where it commonly overlies ophiolitic rocks of the Slide Mountain Group. The basal black argillite is overlain by a series of augite porphyry flows, breccias and minor argillites. These rocks are overlain by a second sequence of argillites and volcanoclastic rocks of Upper Triassic to Lower Jurassic age. The presence of sub-aerial volcanoclastics in the geologic record indicates that volcanic centres in the trough emerged in early Jurassic time. This is postulated to have occurred in conjunction with the rise and deformation of Omineca Crystalline Belt to the east.

Block faulting and tilting are the dominant structural styles in the trough. Faults trend in a northwest and northeast direction. Folding is restricted to its eastern margin near its structural boundary with the Omineca Crystalline Belt.

Two major episodes of granitic intrusion are recognized along a northwest trending belt slightly oblique to the Quesnel Trough. The intrusive events cluster around 200 and 100 million year ages.

Copper and copper-gold deposits have an affinity for 200 million year old alkalic plutons and Triassic-Jurassic volcanic rocks. Molybdenum deposits on the other hand are associated with the 100 million year intrusive event.

7. ECONOMIC GEOLOGY

Most of the non-placer gold production in the Canadian Cordillera has come from producers in the Intermontane and Omineca tectonic belts. The most common host rocks have been Paleozoic to Upper Jurassic eugeosynclinal rocks or volcanic and sedimentary rocks of an island-arc depositional environment (Barr, 1980).

A common exploration target in the Quesnel Trough has been the copper-gold association found in the alkalic porphyry copper environment. Cariboo-Bell and Megabuck properties are examples of this type of target.

Since the discovery of the QR deposit (Dome/Orbex), pyritic-epidote skarns have become a target near alkalic plutons.

In addition, the recent discovery of apparent strata-bound gold mineralization in the basal argillite unit of the Quesnel Trough at the Frasergold property (Amoco/Eureka) has provided a third model of gold occurrence which may have regional exploration implications.

The following are descriptions of documented gold occurrences which may be used as models for exploration on the Wolf #1&2 claims.

7.1 CARIBOO-BELL

The Cariboo-Bell copper-gold deposit is located 12 km east of the Wolf property. The deposit was first actively explored in 1964 after ground examination of a magnetic anomaly revealed copper oxide mineralization. Intensive, intermittent exploration by various operators has continued to the present time.

Current exploration on the property is being carried out by E & B Explorations Inc. The latest published geologic reserves are: 117 million tons 0.31% Cu ,0.012 oz./ton Au, (Saleken & Simpson, 1984).

The Cariboo-Bell belongs to the alkalic class of copper-gold porphyry deposits of early Jurassic age. The mineralization is hosted by a multiphase alkalic intrusive complex intruded into Upper Triassic volcanoclastic rocks, flows and minor sedimentary rocks which are part of a regionally extensive Mesozoic volcanic event in the Quesnel Trough.

Mineralization consists of chalcopyrite, magnetite and alteration minerals directly associated with the development of a "crackle breccia." This breccia generally coincides with an intrusion breccia phase of the complex. The intrusive complex has been described as a tilted multiple laccolith with a length of 6 km and a thickness of 2 to 3 km. (Hodgson, Bailes and Verzosa 1976). Textures vary from coarse plutonic in the lower southwestern part to sub-volcanic textures in the upper, northeastern part. Intrusive phases include syenodiorite, monzonite porphyry, intrusion breccia and pyroxenite-gabbro.

Alteration assemblages are concentric around the mineralized zone. Alteration reflects the alkalic nature of the deposit and grades from a potash feldspar-biotite-diopside core, a garnet-epidote intermediate zone, to a pyritic epidote perimeter zone.

Hodgson, Bailes and Verzosa (1976) have interpreted the geology of the deposit as a local volcanic centre within the Quesnel Trough. The volcanic pile was built up on a regionally extensive blanket of Upper Triassic volcanic derived conglomerate and sandstone. Within the area of the Cariboo-Bell, alternating flows and lahar deposits accumulated in a submarine environment which later evolved

into a subaerial environment. The high level laccolith complex, which hosts most of the mineralization, intruded the centre of the volcanic pile in early Jurassic time.

7.2 QR DEPOSIT

The QR property of Dome Mines/Orbex Minerals is located 14 km north of the Wolf property. The QR zone was discovered in 1975 by Fox Geological Consultants Ltd. on behalf of a joint venture between Newconex Exploration Ltd. and Dome Exploration Ltd. This program was designed to explore for Cu porphyry mineralization. Airborne magnetic anomalies, Cu and Au geochemistry led to a drill program which revealed gold in a pyrite-epidote skarn zone which is associated with a syenodiorite stock.

The skarn zone lies within a relatively thin sequence of limy sedimentary rocks which lie above a thick sequence of alkaline basalts and which are overlain by felsic volcanic rocks. Published drill indicated reserves of 950,000 tons grading 0.21 oz./ton Au have been outlined in the main zone. Further exploration by diamond drilling was conducted in the spring of 1984 on a second zone to the west.

7.3 FRASERGOLD PROPERTY

The Frasergold Property of Eureka Resources is located along the eastern margin of Quesnel Trough, approximately 89 km east-southeast of the Wolf property.

Information available to date suggests a gold environment which differs from the alkalic porphyry association. Belik (1982) described a 3 km long 300 metre wide geochemical gold anomaly which parallels a grey to black Upper Triassic phyllite unit. Gold and silver assays have been obtained from the phyllite and quartz veins within the phyllite. Although surface exposures of the phyllite are limited, the evidence suggests a volcanogenic, syngenetic origin for the gold.

The property was being actively explored by Amoco Canada under option from Eureka Resources during 1984.

8. FIELD WORK

Prior to the program covered in this report, the writer examined the Wolf #2 claim in early June, 1984. The Wolf #1 claim was examined in September of 1984, prior to commencement of the program.

Two northwest trending base lines were cut, one each from the respective southeast corners of Wolf #1 and Wolf #2 claims. Northeast trending cross-lines were flagged and blazed along compass and slope corrected chained lines at 100 metre intervals along the base lines. A tie-line was run between the two base lines to establish and continue the grid coordinates from the southwest to the northeast half of the grid.

In late October the writer was assisted by geologist Ian Talbot. Geological mapping and grid surveying were carried out during this period. Two instrument failures prevented the starting of the magnetometer survey at this time.

I. Talbot returned to the property in late November and completed a magnetometer survey of Wolf #2 portion of the grid in early December. Deep snow prevented access to the Wolf #1 portion of the grid and the survey was terminated.

9. PROPERTY GEOLOGY

Mapping by the Geological Survey of Canada indicates that the area is underlain by basalt breccia, minor flows, tuff and tuffaceous argillite of Upper Triassic age. This unit is part of a sequence of Upper Triassic volcanic rocks which host the nearby Cariboo-Bell deposit.

Mapping by the writer indicates that bedrock exposure is limited to a 500 metre distance along Miles Creek in the northwest corner of the Wolf #1 claim. This is presented on fig. 5 which accompanies this report.

At the time of the grid mapping the area was underlain by 15 to 20 cm of snow. It is possible that there are areas of outcrop on the property which were missed because of the snow cover. On two previous reconnaissance examinations of Wolf #1 and #2 the writer failed to locate additional areas of outcrop.

Exposures in Miles Creek include cherty, limy argillite and several varieties of volcanic rocks of upper Triassic

age. Black olivine bearing vesicular basalt of Tertiary age were also present to a limited extent. A feldspar porphyry dike of unknown but possible Tertiary age was found, cross cutting the upper Triassic rocks.

The upper Triassic volcanic rocks varied in texture from fine grained granular to medium grained sub-porphyrific. Weakly foliated, carbonate altered and highly magnetic varieties were also observed locally. It is possible that fine-grained dark green granular varieties are sedimentary rocks derived from volcanic source rocks.

The geology of Miles Creek indicates that the Wolf #1 and #2 property is predominantly underlain by volcanic and sedimentary rocks of upper Triassic age. Tertiary basalts were found to be of limited extent. They appear to underlie less of the Wolf #1 portion of the grid than is indicated by G.S.C. mapping.

10. MAGNETOMETER SURVEY

The magnetometer survey of the Wolf #1 and #2 property was intended to provide a mapping tool for delineating target areas for geochemical sampling. These targets would be defined either by outlining specific magnetic targets or by extending areas of upper Triassic rocks from outcrop to the covered areas of the grid. It was hoped that the magnetometer survey could differentiate the Tertiary basaltic cover rocks from the target upper Triassic rocks.

This goal was only partially achieved since the magnetometer survey did not extend to the known occurrences of these rocks.

The survey on the Wolf #2 portion of the grid was carried out using a Scintrex MP-2 proton precession magnetometer. Readings for most of the grid were taken at 25 metre intervals along lines spaced 100 metres apart. Readings in the northeast corner of the grid were taken at 50 metre intervals.

A contoured version of the magnetic data is presented on figure 6 and the uncounted readings are presented on figure 7 at 1:5,000 scale.

The contoured magnetic data show a northwest trend which parallels the regional magnetic and geological trend of the area.

An isolated L-shaped, 200 metre long anomaly, centred on Line 36N stands out near the eastern margin of the grid.

The northwest magnetic trend is broken among readings on lines 28 to 32N. A survey error, possibly caused by battery failure, is suspected in this area.

11. CONCLUSIONS

The Wolf #1 and #2 claims are located near the Western edge of a belt Mesozoic volcanic and sedimentary rocks which are favourable host rocks to three types of gold deposits. This belt has just recently been actively explored for gold by major and junior mining companies.

Assessment records indicate that copper mineralization occurs east of the property and west of the Cariboo-Bell property where gold is associated with copper mineralization.

Work to date on the property has outlined a magnetic trend on the Wolf #2 claim which parallels regional magnetic and geologic trends. The magnetometer survey should be extended southwestward to the Wolf #2 half of the grid where both upper Triassic and Tertiary rocks occur.

12. SUMMARY OF EXPENDITURE

to December 14, 1984

Work on Wolf # 1 and 2 carried out during the period
September 20-23, 30, October 27-20, 31, November 1-0, 26-30,
December 1-5.

01	Drafting, Reproduction, & Report Preparation	607.88
02	Equipment Purchase, & consumables	1,511.11
03	Instrument Rental	769.25
04	Labour	6,612.88
05	Line Cutting	6,204.82
06	Room & Board	1,391.46
07	Supervision	3,000.00
08	Transportation, Shipping and Communication	1,153.64
		<hr/>
		\$21,251.04

12. ESTIMATE OF COST

PHASE I

GEOCHEMISTRY	
Sampling: 28 man-days @ \$100/day.....	2,800
Analyses: 5 element ICP and Au by AA	
960 samples @ \$ 7/sample.....	6,720
MAGNETOMETER SURVEY.....	1,600
FIELD EQUIPMENT	
Purchase and Rental.....	1,500
VEHICLE RENTAL	
40 days @ \$50/day.....	2,000
Fuel and Mileage.....	1,000
TRANSPORTATION & SHIPPING.....	1,500
SUPERVISION	
6 days @ \$400/day.....	2,400
ROOM & BOARD	
50 man-days @ \$40/DAY.....	2,000
REPORT PREPARATION, DRAFTING AND REPRODUCTION.....	1,500

	23,020

CONTINGENCY 10%	\$ 2,302

Total Phase I	\$ 25,322

PHASE II

BULLDOZER RENTAL	
50 hr @ \$100/hr.....	5,000
EXCAVATOR TRENCHING	
50 hr @ \$100/hr.....	5,000
MAPPING & SAMPLING	
Geologist 10 days @ \$250/day.....	2,500
GEOCHEMISTRY	
Sampling: 28 mandays @ \$100/day.....	2,800
Analyses: 5 Element ICP & Au by AA	
1050 sample @ \$ 7 sample.....	6,720
Rock Assay	500
ROOM & BOARD	
60 man days at \$ 40/day.....	2,400
VEHICLE RENTAL, FUEL AND TRANSPORTATION.....	4,500
SUPERVISION, REPORT PREPARATION, DRAFTING, REPRODUCTION.....	2,400

	34,320
CONTINGENCY 10%	3,432

PHASE II TOTAL	37,752
PLUS PHASE I	25,322

TOTAL PROGRAM	\$ 63,074

13. REFERENCES

-
- BARR, D.A. (1980): Gold in the Canadian Cordillera, CIM Bulletin, June, 1980.
- BELIK, G. (1982) Summary Report on the Frasergold Property for Eureka Resource Ltd., in Eureka Resources, Prospectus.
- BOYLE, R.W. (1979): The Geochemistry of Gold and Its Deposits G.S.C. Bulletin 280
- B.C. Ministry of Mines: Assessment Report Index Map 93A
- CAMPBELL, J.I. (1972): Report on Reconnaissance of B Property
- CAMPBELL, R.B. AND TIPPER, H.W. (1970): Geology and Mineral Exploration Potential of Quesnel Trough, B.C. CIM Bulletin Vol 63 pp 785-790.
- (1978) G.S.C. Open File 574 Geology, Quesnel Lake, 93A
- FOX, P.E. (1975) Alkaline Rocks and Related Mineral Deposits of Quesnel Trough, B.C., G.A.C. Symposium. Abstracts: Intrusive Rocks and Related Mineralization of the Canadian Cordillera.
- HODGSEN, C.J. BAILES, R.J., VERZOSA, R.S. (1976) Cariboo-Bell in CIM Special Volume No.15, Porphyry Deposits of the Canadian Cordillera.
- REES, C.J. (1981): Western Margin of the Omineca Belt at Quesnel Lake, B.C. in G.S.C. Paper 81-1A p.223-226.
- SALEKEN, L.W. and Simpson, R.G. (1984): Cariboo-Quesnel Gold Belt: A geological overview, Western Miner, April, 1984
- SCHMIDT, U. AND YU, JOHN (1984): Report on the Wolf #1 and #2 Claims, Cariboo Mining Division, Eng. Report for Georgia Strait Resources Ltd.
- SEATON, J.B. (1966): Report on Geophysics and Geochemistry of Liz Group. Assess. Rpt. No.871
- STRUIK, L.C. (1981b): A re-examination of the type area of the

Devono-Mississippian Cariboo Orogeny, central
B.C., Can. Jour. Earth Sci. vol.18 no.12

TIPPER, H.W. et al (1979): Parsnip River, B.C. Map 1424A

WRIGHT, S.W. (1966): Report on Geochemistry of JAC, COB, BIE
Claims. Assess. Rpt. No. 885

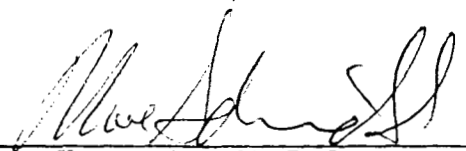
APPENDIX A

CERTIFICATE OF QUALIFICATIONS

I, Uwe Schmidt, of 656 Foresthill Place, Port Moody, B.C. do hereby declare:

- (1) I am a 1971 graduate of the University of British Columbia with a B.Sc. degree in Geology.
- (2) I have practiced my profession continuously since graduation.
- (3) I have managed various mineral exploration projects in the Yukon Territory and B.C. for the past 13 years.
- (4) This report is based on field work carried out by me on the property and a study of available government and assessment reports.
- (5) I have no interest nor do I expect to receive any interest, direct or indirect, in the securities or properties of Georgia Strait Resources Ltd.
- (6) I consent to the inclusion of this report in a Prospectus or Statement of Material Facts.

December 14, 1984
Vancouver, B.C



Uwe Schmidt, B.Sc.

CERTIFICATE OF QUALIFICATIONS

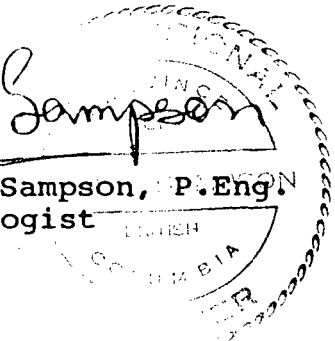
I, Christopher J. Sampson, of 2696 West 11th Avenue, Vancouver, B.C. V6K 2L6 hereby certify that:

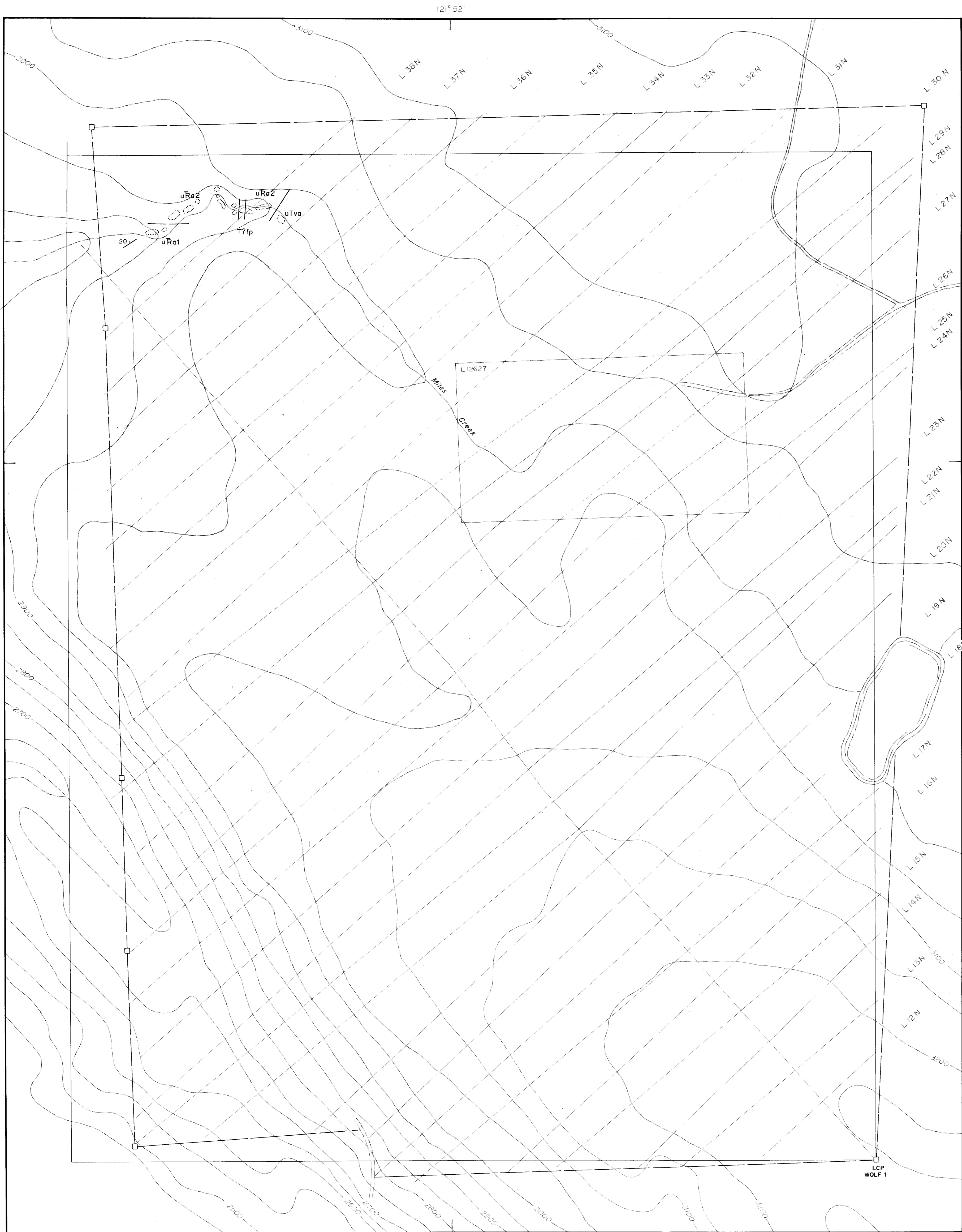
1. I am a graduate (1966) of the Royal School of Mines, London University, England with a Bachelor of Science Degree (Honours) in Economics Geology.
2. I have practiced my profession of mining exploration for the past 17 years in Canada, Europe, United States and Central America. For the past 8 years I have been based in British Columbia.
3. I am a consulting geologist. I am a registered member in good standing of the Association of Professional Engineers of British Columbia.
4. I have not written any other reports on the properties in the immediate vicinity of the Wolf #1 and Wolf #2 properties.
5. The present report is based on knowledge gained from visits made to the property area and study of published reports and data.
6. This report and field work were prepared and carried out by Mr. Uwe Schmidt working under my direction and I have reviewed the report.
7. The writer has known Mr. Schmidt since 1981 and has had several opportunities to review his work in British Columbia and the Yukon. Mr. Schmidt's work and recommendations are highly regarded by the writer and I consider him to be a very competent exploration geologist.
8. I have not received, nor do I expect to receive any interest, direct or indirect, in the properties or securities of Georgia Strait Resources Ltd. or in those of its associated companies.

9. Georgia Strait Resources Ltd. and its affiliates are hereby authorized to use this report in, or in conjunction with, any prospectus or statement of material facts.
10. I have no interest in any other property or company holding property within 10 kilometers of the Wolf #1 and Wolf #2 group of claims.

Vancouver, B.C.
December 14, 1984

Chris J. Sampson
Christopher J. Sampson, P.Eng.
Consulting Geologist





LEGEND

TERTIARY

- uTva *Black vesicular olivine basalt*
- T?fp *Feldspar porphyry*

UPPER TRIASSIC

- uRa1 *Cherty, limy argillite*
- uRa2 *Weakly foliated to weakly porphyritic basic metavolcanic and volcanic-derived meta-sedimentary rocks*

SYMBOLS

- Bedding: inclined*
- Geological boundary: defined, inferred*
- Limit of outcrop*
- Claim post*
- Legal corner post*
- Claim boundary*
- Claim line*
- Grid line*
- Elevations in feet*
- Dirt road*

**GEOLOGICAL BRANCH
ASSESSMENT REPORT**

13,562

GEORGIA STRAIT RESOURCES LTD.

**FIGURE 5
WOLF 1 CLAIM
GEOLOGY**

COASTAL MOUNTAIN ENGINEERING AND MANAGEMENT LTD.

NTS. 93 A / 12

Scale 0 100 200 300 metres

Scale: 1:5,000

Dec., 1984 Project 106



52° 34'

121° 50'



- SYMBOLS**
- Claim post
 - LCP Legal corner post
 - Claim boundary
 - L 16N Grid line
 - 3100 Elevations in feet
 - Dirt road
 - Magnetic low (gammas)

20,000 gammas subtracted from readings
 Contour interval 2000 gammas
GEOLOGICAL BRANCH
ASSESSMENT REPORT

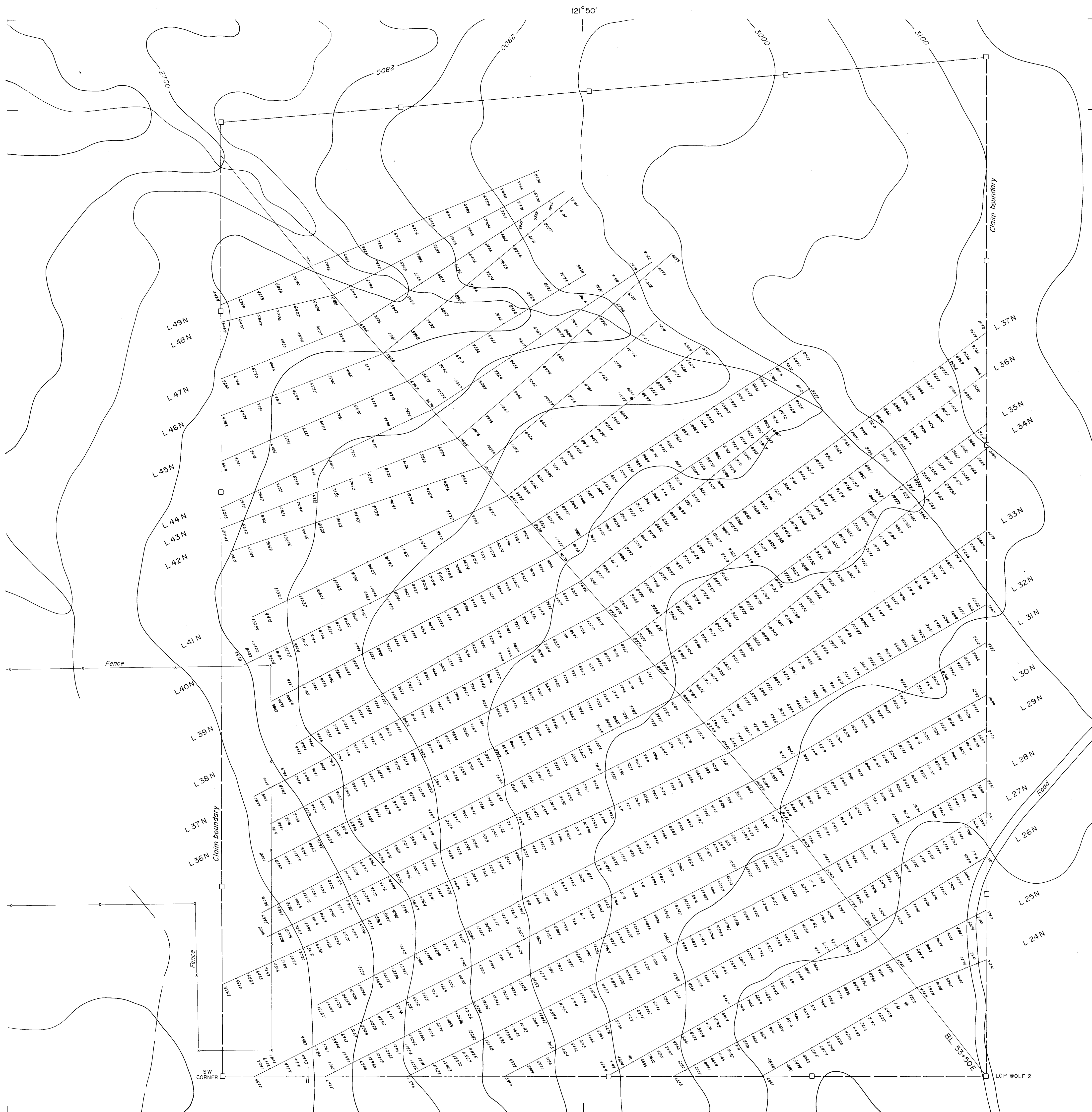
13,562 GEORGE STRAIT RESOURCES LTD.

FIGURE 6
WOLF 2 CLAIM
MAGNETIC SURVEY

COASTAL MOUNTAIN ENGINEERING AND MANAGEMENT LTD.

NTS. 93 A / 12
 Scale 0 100 200 300 metres
 Scale: 1:5,000

Dec., 1984 Project 106



- SYMBOLS**
- Claim post
 - LCP Legal corner post
 - Claim boundary
 - L 16N Grid line
 - 3100— Elevations in feet
 - ==== Dirt road

GEOLOGICAL BRANCH ASSESSMENT REPORT

13,562

GEORGIA STRAIT RESOURCES LTD.

FIGURE 7
**WOLF 2 CLAIM
 MAGNETIC SURVEY GRID**

COASTAL MOUNTAIN ENGINEERING AND MANAGEMENT LTD.

NTS. 93 A / 12
 Scale 0 100 200 300 metres
 Scale: 1:5,000

Dec., 1984 Project 106

20,000 gauss subtracted from readings

SW CORNER

LCP WOLF 2

BL 53-50E

Road

Fence

Claim boundary

Claim boundary

L 49N
L 48N
L 47N
L 46N
L 45N
L 44N
L 43N
L 42N

L 37N
L 36N
L 35N
L 34N
L 33N
L 32N
L 31N
L 30N
L 29N
L 28N
L 27N
L 26N
L 25N
L 24N

121° 50'

52° 34'

0082

0062

3000

3100

2700

L 41N

L 40N

L 39N

L 38N

L 37N

L 36N

L 36N

L 35N

L 34N

L 33N

L 32N

L 31N

L 30N

L 29N

L 28N

L 27N

L 26N

L 25N

L 24N

L 23N

L 22N

L 21N

L 20N

L 19N

L 18N

L 17N

L 16N

L 15N

L 14N

L 13N

L 12N

L 11N

L 10N

L 9N

L 8N

L 7N

L 6N

L 5N

L 4N

L 3N

L 2N

L 1N

L 0N

L 0N

L 0N

L 0N

L 0N

L 0N

L 0N

L 0N

L 0N

L 0N

L 0N

L 0N

L 0N

L 0N

L 0N

L 0N

L 0N

L 0N

L 0N

L 0N

L 0N

L 0N

L 0N

L 0N

L 0N

L 0N

L 0N

L 0N

L 0N

L 0N

L 0N

L 0N

L 0N

L 0N

L 0N

L 0N

L 0N

L 0N

L 0N

L 0N

L 0N

L 0N

L 0N

L 0N

L 0N

L 0N

L 0N

L 0N

L 0N

L 0N

L 0N

L 0N

L 0N

L 0N

L 0N

L 0N

L 0N

L 0N

L 0N

L 0N

L 0N

L 0N

L 0N

L 0N

L 0N

L 0N

L 0N

L 0N

L 0N

L 0N

L 0N

L 0N

L 0N

L 0N

L 0N

L 0N

L 0N

L 0N

L 0N

L 0N

L 0N

L 0N

L 0N

L 0N

L 0N

L 0N

L 0N

L 0N

L 0N

L 0N

L 0N

L 0N

L 0N

L 0N

L 0N

L 0N

L 0N

L 0N

L 0N

L 0N

L 0N

L 0N

L 0N

L 0N

L 0N

L 0N

L 0N

L 0N

L 0N

L 0N

L 0N

L 0N

L 0N

L 0N

L 0N

L 0N

L 0N

L 0N

L 0N

L 0N

L 0N

L 0N

L 0N

L 0N

L 0N

L 0N

L 0N

L 0N

L 0N

L 0N

L 0N

L 0N

L 0N

L 0N

L 0N

L 0N

L 0N

L 0N

L 0N

L 0N

L 0N

L 0N

L 0N

L 0N

L 0N

L 0N

L 0N

L 0N

L 0N

L 0N

L 0N

L 0N

L 0N

L 0N

L 0N

L 0N

L 0N

L 0N

L 0N

L 0N

L 0N

L 0N

L 0N

L 0N

L 0N

L 0N

L 0N

L 0N

L 0N

L 0N

L 0N

L 0N

L 0N

L 0N

L 0N

L 0N

L 0N

L 0N

L 0N

L 0N

L 0N

L 0N

L 0N

L 0N

L 0N

L 0N

L 0N

L 0N

L 0N

L 0N

L 0N

L 0N

L 0N

L 0N

L 0N

L 0N

L 0N

L 0N

L 0N

L 0N

L 0N

L 0N

L 0N

L 0N

L 0N

L 0N

L 0N

L 0N

L 0N

L 0N

L 0N

L 0N

L 0N

L 0N

L 0N

L 0N

L 0N

L 0