

APPENDIX VII

Eva 26 Grid

The following are appended:

- i. Listing of soil sample assays 1984.
- ii. Listing of rock sample assays 1984.
- iii. Listing of rock sample descriptions 1984.
- iv. Geology map on 1:5,000 scale.
- v. Soil sample location map on 1:5,000 scale.
- vi. Rock sample location map on 1:5,000 scale.
- vii. Geochemical assay maps on 1:5,000 scale for soils and rocks showing geochemical plots for Cu, Pb, Zn, Ag, As, Ni, Au, Sb and Hg.
- viii. Ground magnetometer results on 1:5,000 scale.
- ix. Fraser-filtered VLF-EM results on 1:5,000 scale.

**GEOLOGICAL BRANCH
ASSESSMENT REPORT**

13,709
PART 5 of 5

EVA 26 GRID SOIL ASSAYS

GRID	SAMPLE	PROJECT	CU	ZN	PB	NI	AG	AU	W	AS	HG	SB
EVX	2139	4177	66	76	6	630	<0.2	0.02		72	398	<2
EVX	2140	4177	65	61	7	410	<0.2	0.03		130	68	<2
EVX	2141	4177	73	104	15	1100	0.5	0.11		320	187	6
EVX	2142	4177	82	173	24	137	0.7	0.29		440	78	20
EVX	2143	4177	112	127	14	490	0.3	0.05		300	51	48
EVX	2143*	4177	107	123	13	460	0.2	0.06		304	54	48
EVX	2144	4177	160	138	22	620	0.4	0.08		480	88	112
EVX	2145	4177	89	87	7	164	<0.2	0.04		144	95	88
EVX	2146	4177	85	105	15	106	0.4	0.08		400	187	28
EVX	2147	4177	76	95	27	80	0.5	0.06		414	371	20
EVX	2148	4177	117	142	18	183	0.4	0.06		440	190	26
EVX	2149	4177	96	147	10	580	0.3	0.08		280	136	8
EVX	2150	4177	124	139	6	990	<0.2	<0.02		<2	24	<2
EVX	2151	4177	73	76	6	410	<0.2	0.12		100	17	<2
EVX	2152	4177	45	76	4	1570	<0.2	0.03		100	85	<2
EVX	2153	4177	76	91	7	730	<0.2	<0.02		80	41	<2
EVX	2154	4177	54	84	9	730	<0.2	<0.02		52	34	<2
EVX	2155	4177	72	98	9	500	<0.2	<0.02		64	41	<2
EVX	2156	4177	52	79	6	640	<0.2	0.03		28	10	<2
EVX	2157	4177	57	90	8	860	<0.2	<0.02		80	14	<2
EVX	2158	4177	71	90	8	970	<0.2	<0.02		100	37	<2
EVX	2159	4177	60	108	14	460	<0.2	<0.02		72	10	<2
EVX	2160	4177	90	106	13	430	0.3	0.06		304	88	20
EVX	2161	4177	64	116	12	144	0.2	0.10		360	313	80
EVX	2162	4177	79	153	27	500	0.5	0.07		480	92	150
EVX	2890	4177	21	102	6	1780	<0.2	<0.02		92	>2000	<2
EVX	2891	4177	102	112	9	660	<0.2	<0.02		60	14	<2
EVX	2892	4177	64	77	12	790	<0.2	0.03		140	14	<2
EVX	2893	4177	50	68	7	710	<0.2	0.03		36	<5	<2
EVX	2894	4177	52	63	7	980	<0.2	<0.02		32	7	<2
EVX	2895	4177	82	112	53	510	<0.2	<0.02		108	88	34
EVX	2896	4177	57	93	9	510	<0.2	0.02		48	34	<2
EVX	2897	4177	84	87	9	210	<0.2	0.02		60	24	<2

GRID	SAMPLE	PROJECT	CU	ZN	PB	NI	AG	AU	W	AS	HG	SB
EVX	2897*	4177	84	86	7	210	<0.2	0.02		64	51	<2
EVX	2898	4177	118	90	4	290	<0.2	<0.02		44	<5	<2
EVX	2899	4177	62	66	7	640	<0.2	<0.02		24	7	<2
EVX	2900	4177	54	100	10	560	<0.2	0.04		36	<5	<2
EVX	2901	4177	61	88	7	870	<0.2	<0.02		80	10	<2
EVX	2902	4177	43	90	7	870	<0.2	0.03		100	<5	<2
EVX	2903	4177	79	94	7	1240	<0.2	<0.02		32	10	<2
EVX	2904	4177	92	87	6	990	<0.2	0.02		40	20	<2
EVX	2905	4177	70	88	9	410	0.2	0.03		188	20	<2
EVX	2906	4177	77	89	12	650	<0.2	0.08		48	7	<2
EVX	2907	4177	92	190	9	151	0.3	0.12		376	54	24
EVX	2908	4177	70	112	10	134	0.3	0.02		140	34	18
EVX	2909	4177	105	142	22	61	0.7	0.61		1440	248	210
EVX	2910	4177	94	112	12	71	<0.2	0.05		60	24	<2
EVX	2911	4177	74	172	13	56	<0.2	0.06		112	20	42
EVX	2912	4177	55	107	17	51	<0.2	0.03		56	<5	<2
EVX	2913	4177	52	113	17	76	<0.2	0.05		132	17	12
EVX	2914	4177	73	130	11	179	<0.2	0.06		64	34	6
EVX	2915	4177	64	93	13	73	<0.2	0.05		140	20	14
EVX	2916	4177	70	96	10	600	0.2	<0.02		72	59	<2
EVX	2917	4177	72	78	7	1010	0.2	<0.02		16	66	<2
EVX	2918	4177	77	95	7	950	<0.2	<0.02		44	59	<2
EVX	2919	4177	25	130	8	1670	0.2	0.14		100	76	<2
EVX	2920	4177	117	119	22	560	0.8	0.07		640	63	<2
EVX	2921	4177	30	154	8	2020	<0.2	0.13		212	53	<2
EVX	2922	4177	62	98	6	970	<0.2	0.12		116	33	<2
EVX	2923	4177	56	46	7	1160	<0.2	0.08		36	56	<2
EVX	2924	4177	18	28	7	1900	<0.2	0.18		36	69	<2
EVX	2924*	4177	18	28	9	1910	<0.2	0.18		40	66	<2
EVX	2925	4177	45	50	7	1260	<0.2	0.05		28	63	<2
EVX	2926	4177	68	79	12	790	<0.2	0.02		120	248	<2
EVX	2927	4177	89	87	8	850	<0.2	0.04		44	59	<2
EVX	2928	4177	85	96	8	750	<0.2	0.10		92	59	<2

GRID	SAMPLE	PROJECT	CU	ZN	PB	NI	AG	AU	W	AS	HG	SB
EVX	2961	4177	48	131	12	188	0.2	<0.02		200	46	24
EVX	2962	4177	51	180	33	210	0.2	<0.02		320	53	130
EVX	2963	4177	55	144	26	220	0.2	<0.02		376	46	48
EVX	2964	4177	75	140	45	102	0.4	0.06		480	76	98
EVX	2965	4177	85	142	16	80	<0.2	<0.02		24	142	<2
EVX	2967	4177	66	118	15	114	<0.2	<0.02		16	96	<2
EVX	2969	4177	45	85	12	650	<0.2	<0.02		36	33	<2
EVX	2969*	4177	46	85	11	670	<0.2	<0.02		32	46	<2
EVX	2971	4177	32	71	11	135	<0.2	<0.02		8	73	<2
EVX	2973	4177	39	110	12	187	<0.2	<0.02		56	66	6
EVX	2975	4177	55	124	9	480	<0.2	<0.02		20	162	<2
EVX	2977	4177	75	128	12	164	<0.2	<0.02		148	79	28
EVX	2979	4177	41	83	7	470	<0.2	<0.02		60	93	2
EVX	2981	4177	130	170	17	320	<0.2	<0.02		52	162	<2
EVX	2983	4177	64	101	9	330	0.2	0.20		48	66	<2
EVX	2985	4177	71	95	13	340	<0.2	0.03		72	211	8
EVX	2986	4177	54	90	9	460	<0.2	<0.02		52	46	6

EVA 26 ROCK SAMPLE ASSAYS

GRID	SAMPLE	PROJECT	CU	ZN	PB	NI	AG	AU	W	AS	HG	SB
	75264	4182	21	16	2	19	<0.2	<0.02		<2	84	<2
	75265	4182	43	35	3	23	<0.2	<0.02		<2	49	<2
	75266	4182	34	41	7	45	<0.2	<0.02		16	180	<2
	75267	4182	54	107	6	62	<0.2	<0.02		8	56	<2
	75268	4182	32	25	2	18	<0.2	<0.02		<2	84	<2
	75268*	4182	32	25	3	18	<0.2	<0.02		<2	53	<2
	75269	4182	13	22	2	1100	<0.2	<0.02		<2	35	<2
	75270	4182	33	62	5	43	<0.2	<0.02		<2	70	<2
	75271	4182	22	39	4	26	<0.2	<0.02		<2	56	<2
	75272	4182	45	26	2	300	<0.2	<0.02		<2	74	<2
	75273	4182	44	45	2	11	<0.2	<0.02		40	49	2
	75274	4182	5	8	14	60	<0.2	<0.02		<2	39	<2
	75275	4182	49	81	7	26	<0.2	<0.02		<2	77	<2
	75302	4182	10	49	2	1230	<0.2	<0.02		16	63	<2
	75302*	4182	10	50	3	1510	<0.2	<0.02		20	53	<2
	75303	4182	9	39	5	810	<0.2	0.02		44	330	<2
	75304	4182	9	35	3	54	<0.2	0.02		<2	49	<2
	75305	4182	27	93	14	26	<0.2	0.07		36	56	<2
	75306	4182	32	20	2	22	<0.2	<0.02		24	870	<2
	75307	4182	32	15	2	15	<0.2	<0.02		4	70	4
	75308	4182	23	16	<2	240	<0.2	<0.02		<2	49	<2
	75309	4182	31	28	2	16	<0.2	<0.02		<2	88	<2
	75310	4182	30	50	3	90	<0.2	<0.02		2	35	<2
	75311	4182	15	31	4	1500	<0.2	<0.02		44	46	<2
	75312	4182	16	73	6	32	<0.2	<0.02		<2	44	<2
	75313	4182	58	100	10	167	<0.2	<0.02		<2	116	<2
	75314	4182	23	53	4	54	<0.2	<0.02		<2	37	<2
	75315	4182	22	23	9	47	<0.2	<0.02		<2	75	8
	75316	4182	41	46	9	58	<0.2	<0.02		<2	300	4
	75351	4182	38	19	9	134	0.2	<0.02		<2	1530	<2
	75352	4182	33	38	8	36	0.2	<0.02		<2	1560	<2
	75353	4182	18	32	9	1020	<0.2	<0.02		<2	44	6
	75354	4182	15	41	5	1480	0.2	<0.02		104	75	<2

GRID	SAMPLE	PROJECT	CU	ZN	PB	NI	AG	AU	W	AS	HG	SB
	75355	4182	8	17	10	950	<0.2	<0.02		4	24	<2
	75356	4182	2	20	7	1010	<0.2	<0.02		<2	51	6
	75357	4182	43	73	7	30	<0.2	<0.02		<2	31	4
	75358	4182	58	32	5	24	<0.2	<0.02		<2	37	<2
	75359	4182	26	31	3	20	<0.2	<0.02		60	95	8
	75360	4182	17	51	3	25	<0.2	<0.02		<2	41	<2
	75361	4182	20	35	2	23	<0.2	<0.02		128	230	<2
	75362	4182	35	36	3	22	<0.2	<0.02		128	20	6
	75363	4182	36	22	3	41	0.2	<0.02		<2	41	<2
	75364	4182	20	16	3	18	<0.2	<0.02		40	34	<2
	75365	4182	25	24	6	27	<0.2	<0.02		<2	27	<2
	75366	4182	21	17	3	69	<0.2	<0.02		<2	31	<2
	75367	4182	23	19	5	29	<0.2	<0.02		<2	20	<2
	75368	4182	33	18	3	131	<0.2	<0.02		40	37	<2
	75369	4182	29	25	5	95	<0.2	<0.02		<2	27	<2
	75370	4182	24	29	5	30	<0.2	<0.02		<2	34	<2
	75696	4182	48	40	4	104	<0.2	<0.02		<2	16	<2
	75697	4182	37	18	4	25	<0.2	<0.02		<2	<5	<2
	75698	4182	11	28	3	1140	<0.2	<0.02		<2	6	<2
	75699	4182	11	43	4	1470	<0.2	<0.02		60	<5	<2
	75700	4182	6	29	6	1140	<0.2	<0.02		68	19	4

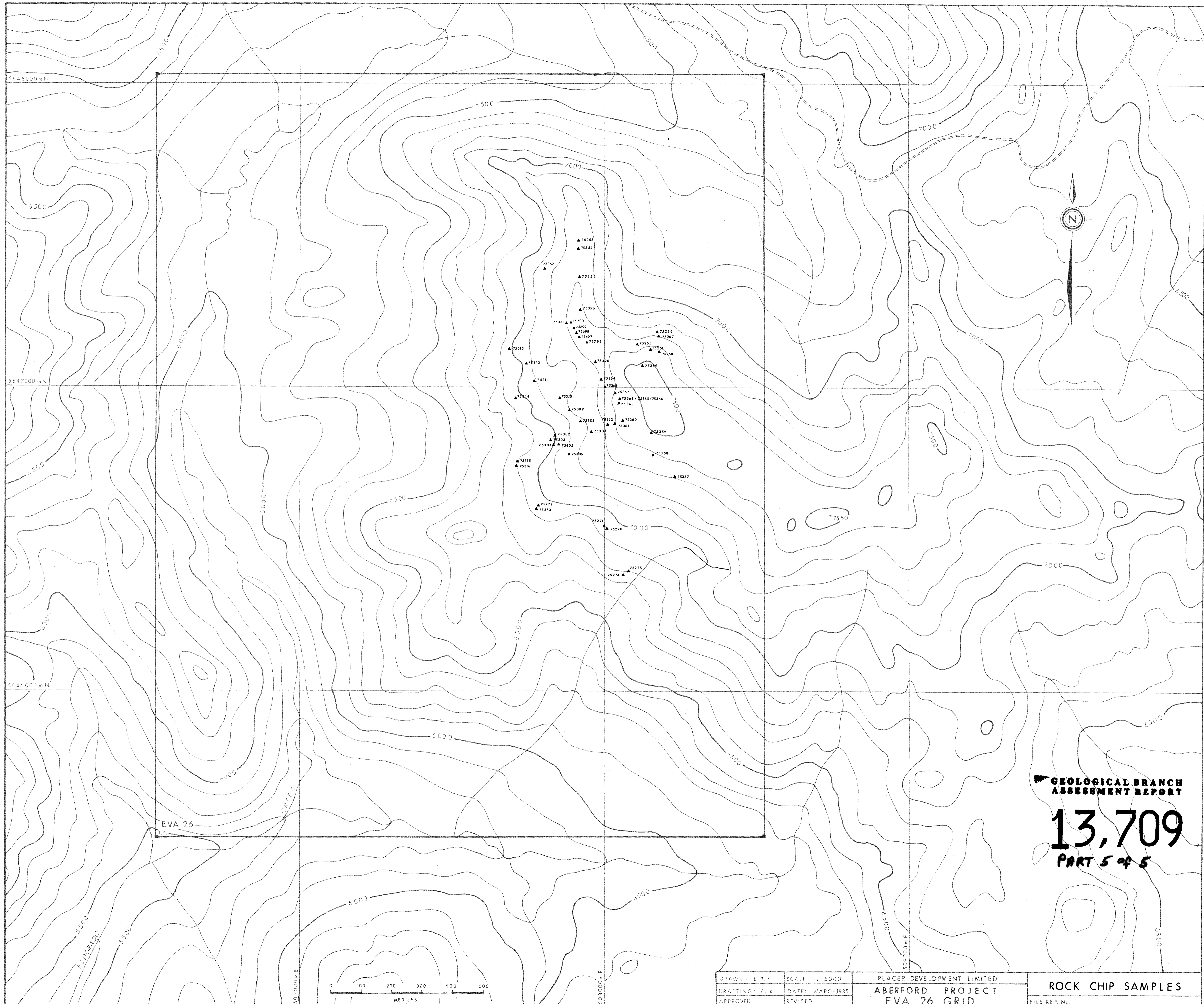
The following list is a brief description of rock chip samples on

Eva26

SAMPLE NO -----	EXPOSURE TYPE -----	SAMPLE LENGTH (m) -----	ROCK DESCRIPTION -----
75264	Outcrop	2.5	White crystalline chert
75265	"	7.0	Dark purplish grey shale
75266	"	1.5	Medium orangy tan, sheared shale, disseminated pyrite
75267	"	.7	Pyritized rhyolite dyke
75268	"	2.0	Ribbon chert, disseminated pyrite
75269	Float		Tremolite schist
75270	"	8.0	Chert, minor schist, disseminated pyrite
75271	"	8.0	Highly fractured interbedded chert and shales, minor limestone lenses
75272	"		Shales, minor chert
75273	"		Porphyritic rhyolite dyke
75274	Outcrop		Limestone
75275	"		Fossiliferous highly weathered limestone
75302	"	10.0	Sheared, altered basalt
75303	"	20.0	Silicified rhyolite dyke, fine quartz stockwork
75304	"	5.0	Diorite
75305	"	10.0	Rhyolite dyke, minor quartz veins
75306	"	10.0	Chert
75307	"	2.0	Chert
75308	"	2.0	Highly fractured rhyolite
75309	Float		Chert, disseminated pyrite

SAMPLE NO	EXPOSURE TYPE	SAMPLE LENGTH (m)	ROCK DESCRIPTION
75310	Outcrop		Chert, minor intercalated schist, disseminated pyrite
75311	"	1.0	Narrow shear in dark grey crystalline rock. Recrystallized basalt?
75312	"	1.0	sandstone
75313	"		Limy sandstone
75314	Float		Chert
75315	Outcrop		Rhyolite
75316	"		Rhyolite
75352	"	2.0	Fine grained bedded sandstone, disseminated pyrite
75353	"	3.0	Rusty, carbonatized amphibolite, sheared
75354	"		Dark grey ultramafics, disseminated pyrite
75355	"	6.0	Ultramafic, carbonate altered zone with lacework and veins of calcite, limonitic staining
75356	"		Ultramafic, carbonate altered
75357	"	10.0	Fine grained siltstone
75358	"	20.0	Mixture of light tan bedded chert, grey siltstone and light grey siliceous quartzite
75359	"	20.0	Thin bedded chert, quartz veins
75360	Sub-outcrop	20.0	Siltstone, disseminated pyrite
75361	Outcrop	30.0	Mixture of grey siltstone and siliceous quartzite, disseminated pyrite, quartz veins
75362	"	1.0	Fractured siliceous siltstone
75363	"		Chert
75364			Silicified siltstone on dyke contact

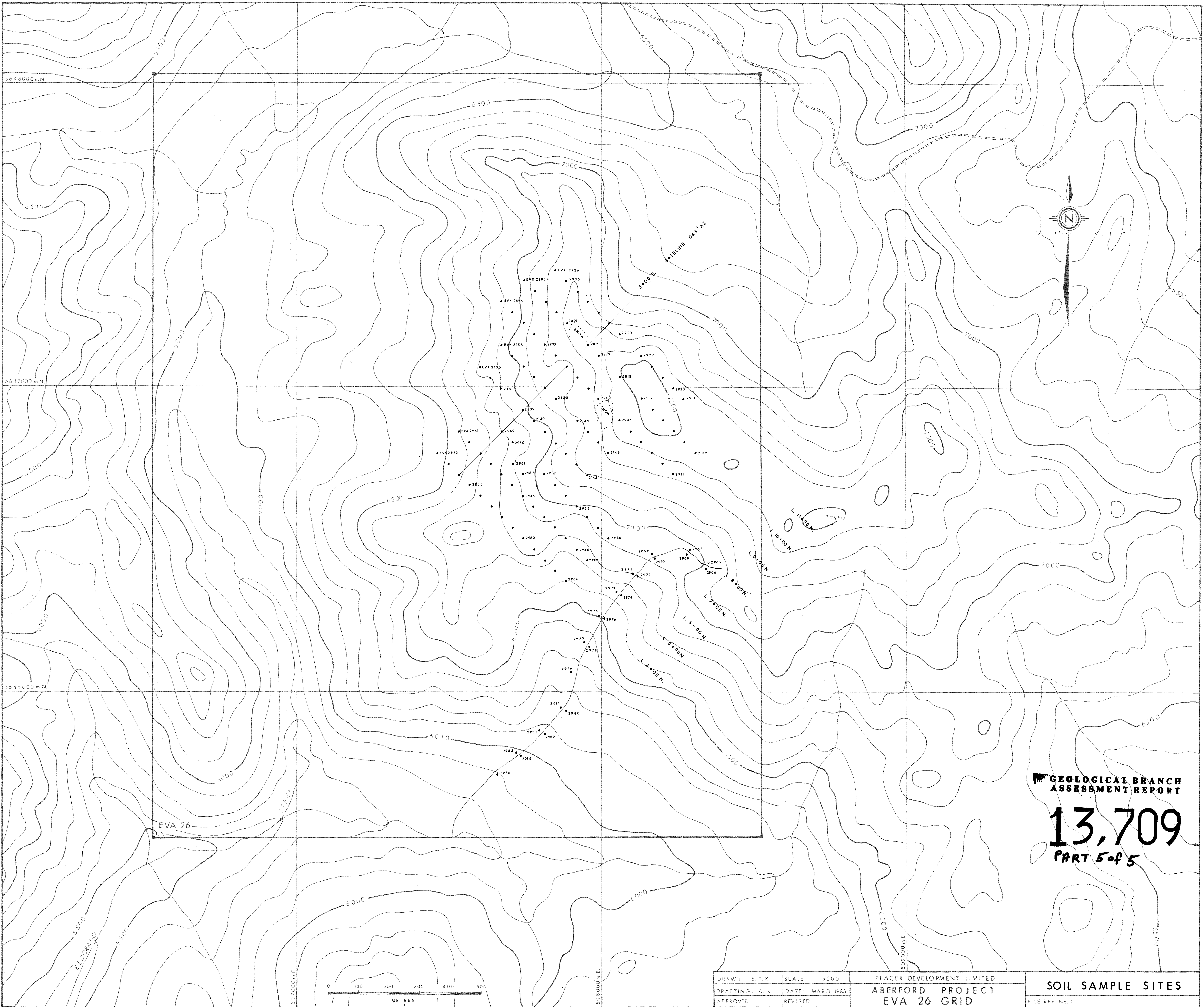
SAMPLE NO	EXPOSURE TYPE	SAMPLE LENGTH (m)	ROCK DESCRIPTION
75365	Sub-outcrop		Porphyritic dyke
75366	Outcrop	2.0	Quartz flooded silicified siltstone
75367	Sub-outcrop	2.0	Silicified siltstone on dyke contact
75368	Outcrop	20.0	Quartz flooded silicified siltstone
75369	"	30.0	Quartz flooded silicified siltstone
75370	"	50.0	Silicified siltstone
75696	"	10.0	Very dark grey siliceous sandstone or graywacke with disseminated pyrite and quartz lenses
75697	"	20.0	Chert
75698	"	1.0	Narrow carbonate altered sandstone
75699	"	3.0	Ultramafic
75700	"	.5	Carbonate altered zone
75351	"	3.0	Carbonate altered graywacke



**GEOLOGICAL BRANCH
ASSESSMENT REPORT**

13,709
PART 5 of 5

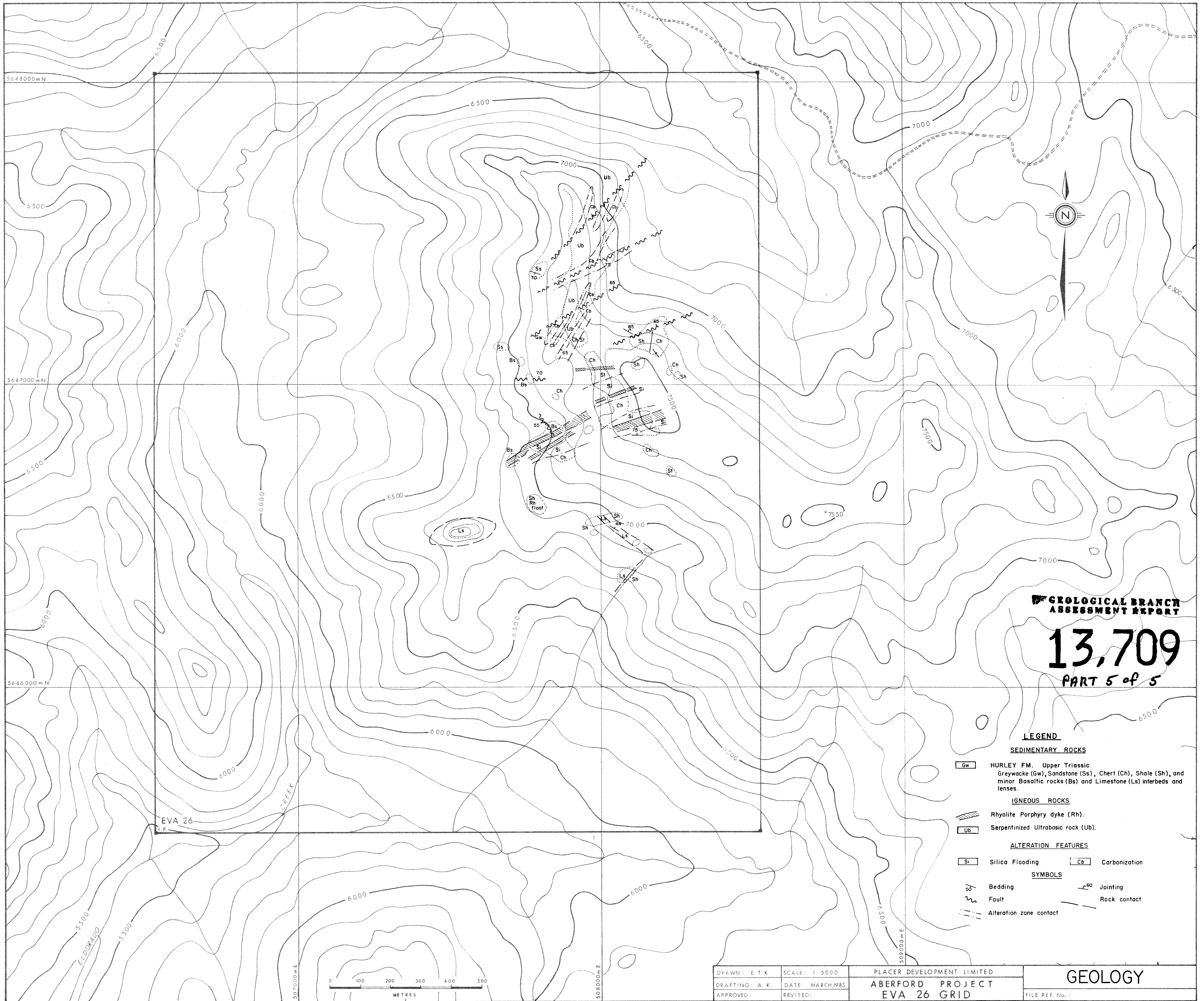
DRAWN: E.T.K	SCALE: 1:5000	PLACER DEVELOPMENT LIMITED	ROCK CHIP SAMPLES FILE REF. No.
DRAFTING: A.K	DATE: MARCH 1985	ABERFORD PROJECT EVA 26 GRID	
APPROVED:	REVISED:		



**GEOLOGICAL BRANCH
ASSESSMENT REPORT**

13,709
PART 5 of 5

DRAWN: E.T.K.	SCALE: 1:5000	PLACER DEVELOPMENT LIMITED	SOIL SAMPLE SITES
DRAFTING: A.K.	DATE: MARCH, 1985	ABERFORD PROJECT EVA 26 GRID	
APPROVED:	REVISED:	FILE REF. No.:	



**GEOLOGICAL BRANCH
ASSESSMENT REPORT**

13,709
PART 5 of 5

LEGEND

SEDIMENTARY ROCKS

Gw HURLEY FM. Upper Triassic Greywacke (Gw), Sandstone (Ss), Chert (Ch), Shale (Sh), and minor Basaltic rocks (Bs) and Limestone (Ls) interbeds and lenses.

IGNEOUS ROCKS

Rh Rhyolite Porphyry dyke (Rh).
Ub Serpentinized Ultrabasic rock (Ub).

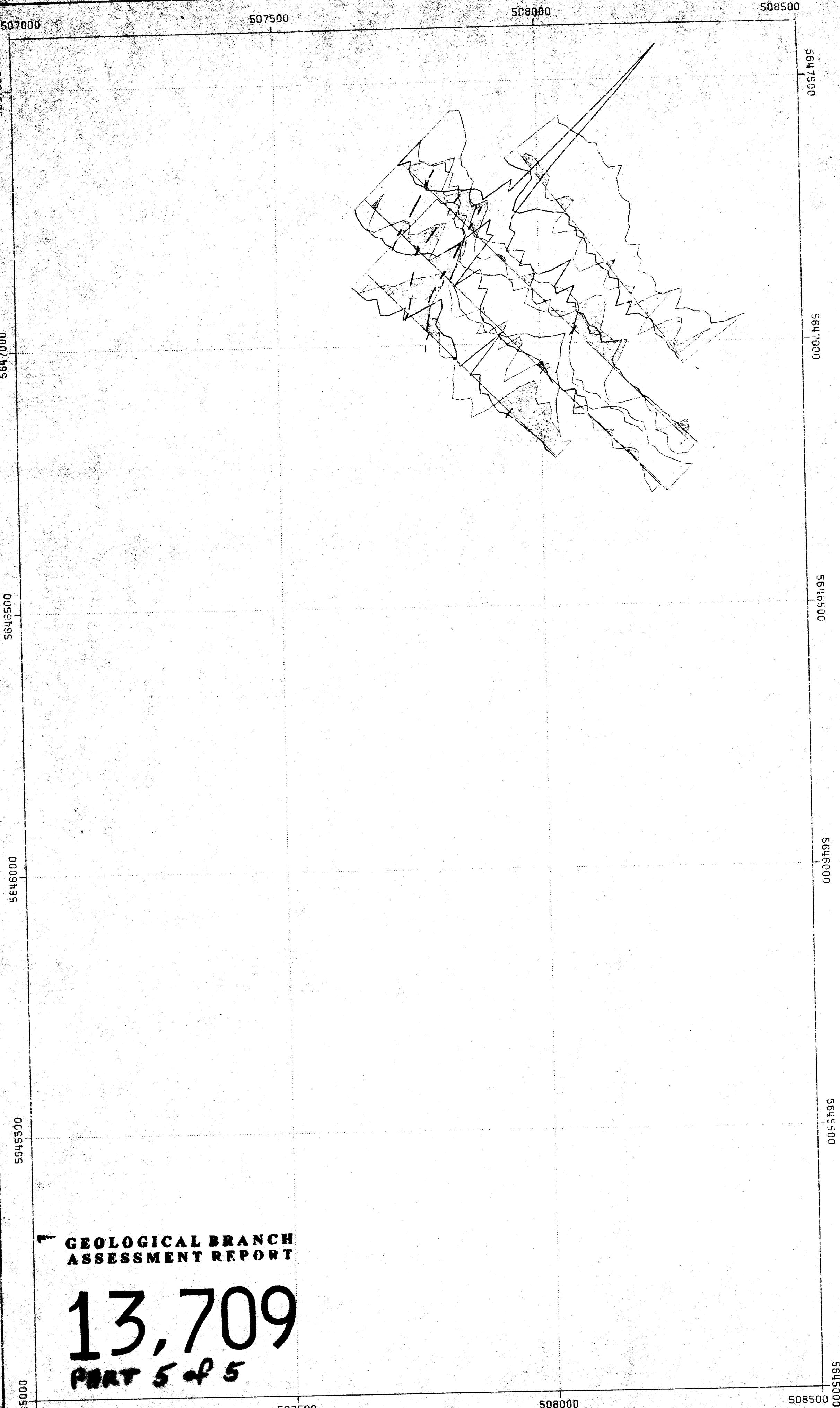
ALTERATION FEATURES

Si Silica Flooding **Cb** Carbonization

SYMBOLS

30 Bedding **60** Jointing
~ Fault **-** Rock contact
--- Alteration zone contact

DRAWN: E.T.K.	SCALE: 1:5000	PLACER DEVELOPMENT LIMITED	GEOLOGY
DRAFTING: A.K.	DATE: MARCH, 1985	ABERFORD PROJECT	
APPROVED:	REVISED:	EVA 26 GRID	
			FILE REF. No.:



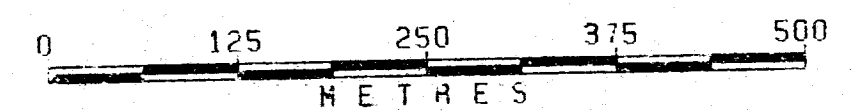
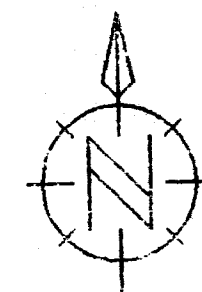
GROUND MAGNETICS AND VLF (EM-16)

HEAVY - MAGNETICS
 MEDIUM - VLF (IN PHASE)
 LIGHT - VLF (FRASER FILTER)

DATA PLOTTED ON THIS MAP:

	FIELD	FILE
PROFILES:	MAG	EXPL*G01DBR84.EVA26/GEOP-S
SCALE:		200 UNITS / CM
BASE LEVEL:		7200
PROFILES:	IP	EXPL*G01DBR84.EVA26/GEOP-S
SCALE:		20.0 UNITS / CM
BASE LEVEL:		0.0
PROFILES:	IF	EXPL*G01DBR84.EVA26/GEOP-S
SCALE:		20.0 UNITS / CM
BASE LEVEL:		0.0
		FRASER FILTER APPLIED

DIRECTION OF NORTH AT CENTRE OF MAP

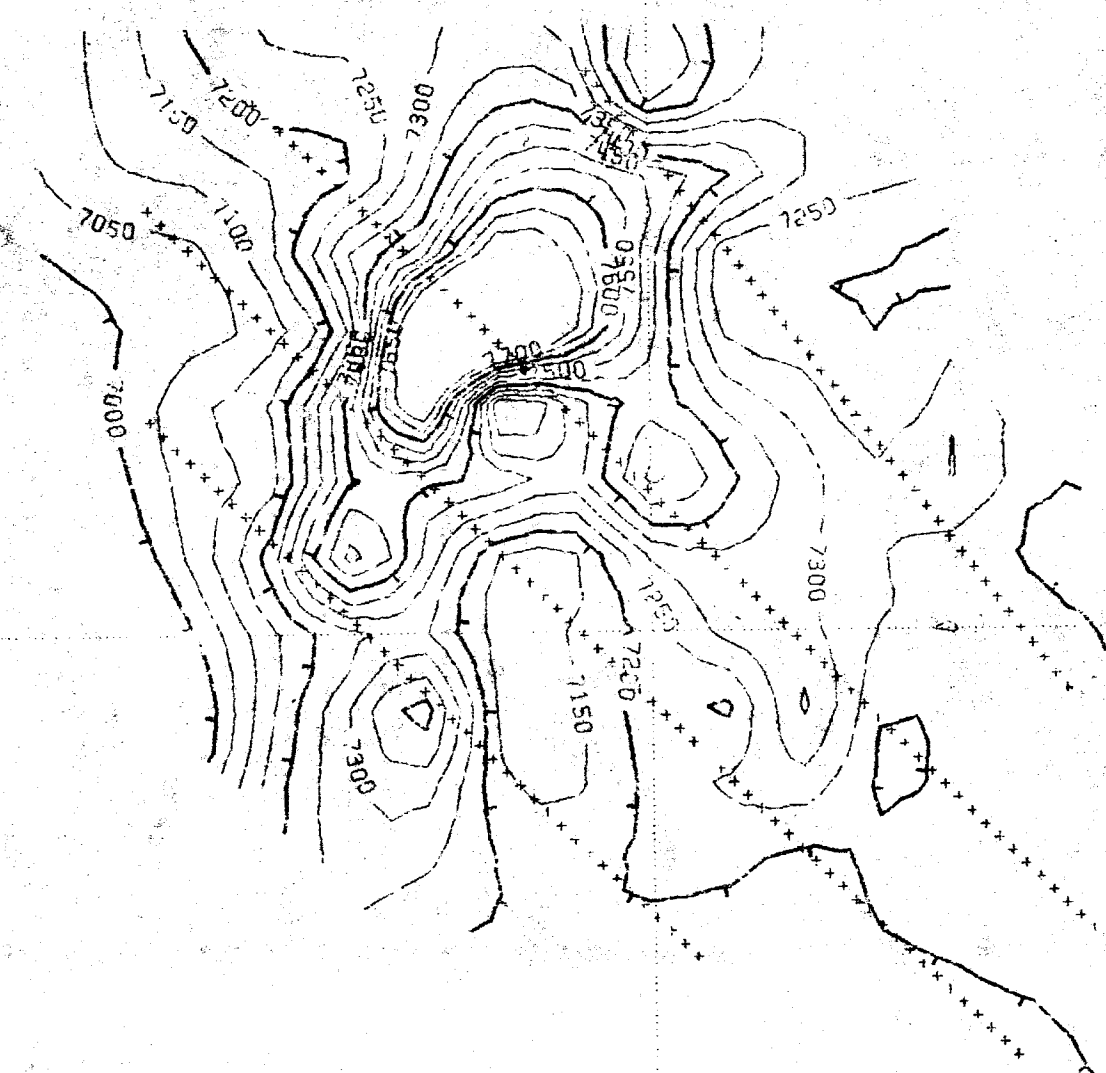


GEOLOGICAL BRANCH
 ASSESSMENT REPORT

13,709
 PART 5 of 5

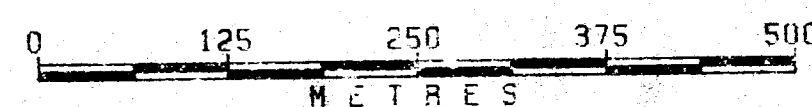
DRAWN		BG	PLACER DEVELOPMENT LIMITED GROUND MAGNETICS AND VLF (EM-16) EVA 26 GRID
DATE		84/12/10	
SCALE		1:5000	
NO.			

EVA26 GRID MAGNETICS
GROUND MAGNETICS SCINTREX MP-2
CORRECTED TO +/- 5 NT
CONTOUR INTERVAL 50 NT
50000 NT SUBTRACTED FROM DATA



DATA PLOTTED ON THIS MAP:
FIELD FILE
+ CONTOURS: MAG EXPL*G0L0884.EVA26/GEOP-S

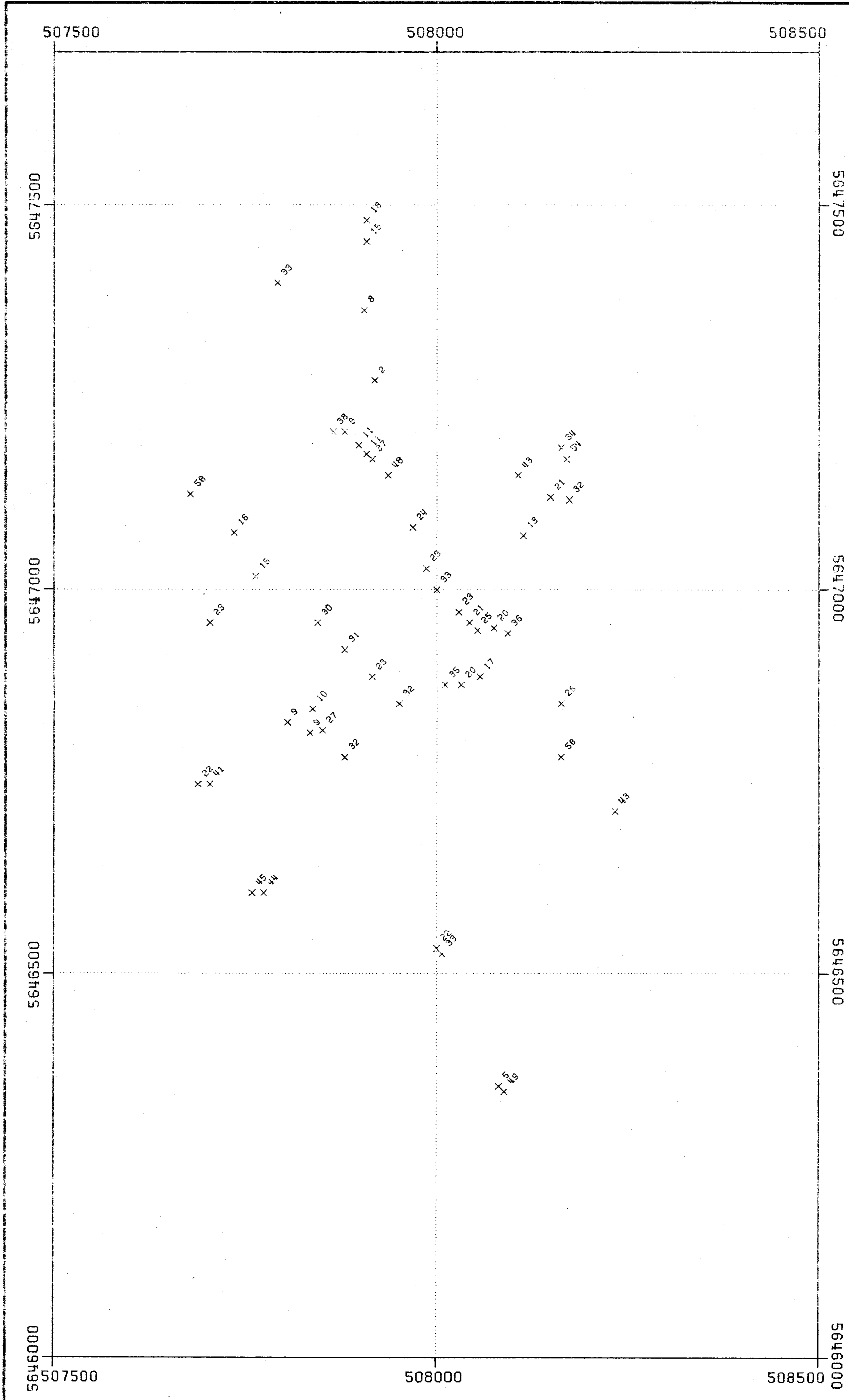
DIRECTION OF NORTH AT CENTRE OF MAP



**GEOLOGICAL BRANCH
ASSESSMENT REPORT**

13,709
PART 5 of 5

DRAWN JMT		PLACER DEVELOPMENT LIMITED	
DATE 84/12/13		EVA26 GRID MAGNETICS	
SCALE 1:5000		NO.	



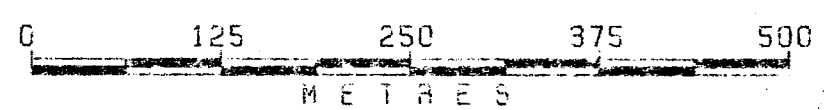
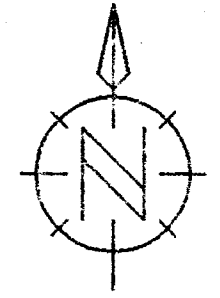
EVA 26 GRID CU IN ROCKS
RESULTS IN PPM

**GEOLOGICAL BRANCH
ASSESSMENT REPORT**

13,709
Part 5 of 5

DATA PLOTTED ON THIS MAP:
FIELD FILE
X POINTS: CU EXPL*V-193.EVA26/ROCKLOCAS

DIRECTION OF NORTH AT CENTRE OF MAP



DRAWN MAM		PLACER DEVELOPMENT LIMITED
DATE 84/11/09		EVA 26 GRID CU IN ROCKS
SCALE 1:5000		
		NO.

507500

508000

508500

EVA 26 GRID PB IN ROCKS

RESULTS IN PPM

5647500

5647500

5647000

5647000

5646500

5646500

5646000

5646000

507500

508000

508500

**GEOLOGICAL BRANCH
ASSESSMENT REPORT**

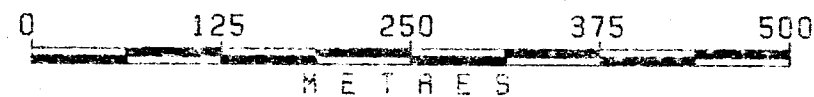
13,709

Part 5 of 5

DATA PLOTTED ON THIS MAP:

	FIELD	FILE
x POINTS:	PB	EXPL*V-193.EVA26/ROCKLOCAS

DIRECTION OF NORTH AT CENTRE OF MAP



PLACER DEVELOPMENT LIMITED

DRAWN	MAM	EVA 26 GRID PB IN ROCKS
DATE	84/11/09	
SCALE	1:5000	
		NO.

507500

508000

508500

EVA 26 GRID ZN IN ROCKS
RESULTS IN PPM

5647500

5647500

5647000

5647000

5646500

5646500

5646000

5646000

507500

508000

508500

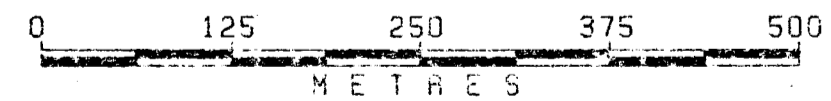
**GEOLOGICAL BRANCH
ASSESSMENT REPORT**

13,709
Part 5 of 5

DATA PLOTTED ON THIS MAP:

FIELD FILE
× POINTS: ZN EXPL×V-193.EVA26/ROCKLOCAS

DIRECTION OF NORTH AT CENTRE OF MAP



DRAWN MAM		PLACER DEVELOPMENT LIMITED EVA 26 GRID ZN IN ROCKS
DATE 84/11/09		
SCALE 1:5000		
		NO.

507500

508000

508500

EVA 26 GRID AG IN ROCKS

RESULTS IN PPM

5647500

5647500

5647000

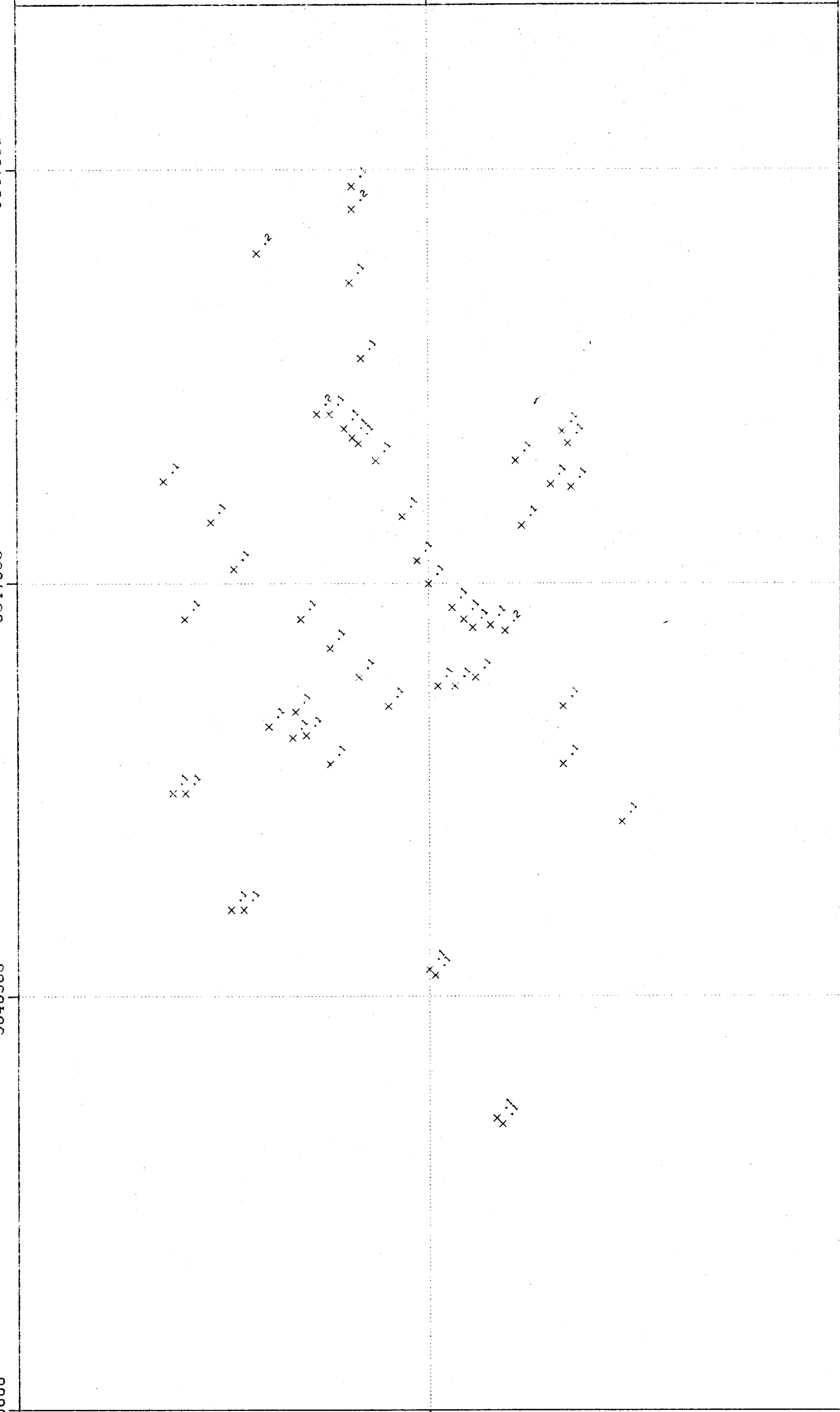
5647000

5646500

5646500

5646000

5646000



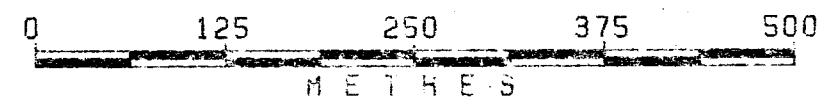
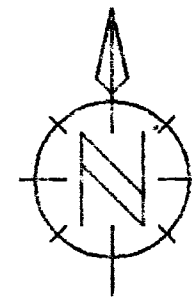
**GEOLOGICAL BRANCH
ASSESSMENT REPORT**

13,709
Part 5 of 5

DATA PLOTTED ON THIS MAP:

	FIELD	FILE
x POINTS:	AG	EXPL*V-193.EVA26/ROCKLOCAS

DIRECTION OF NORTH AT CENTRE OF MAP



PLACER DEVELOPMENT LIMITED

DRAWN MAM

EVA 26 GRID AG IN ROCKS

DATE 84/11/09

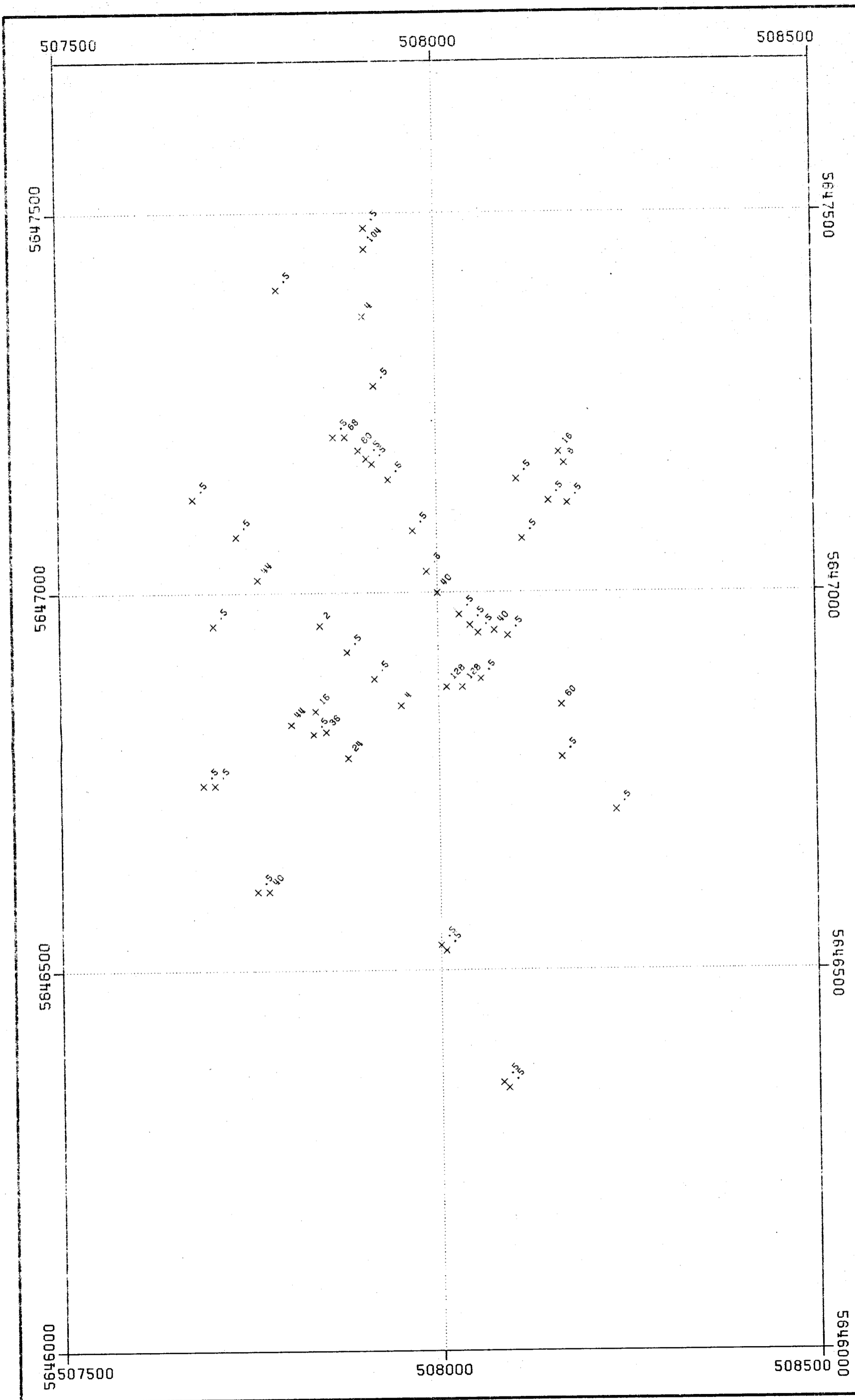
SCALE 1:5000

NO.

507500

508000

508500



EVA 26 GRID AS IN ROCKS
RESULTS IN PPM

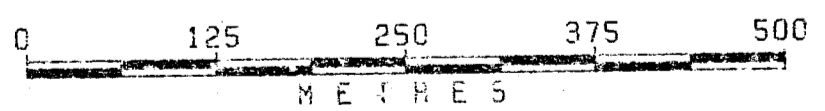
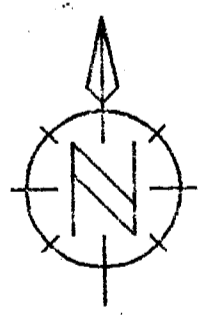
**GEOLOGICAL BRANCH
ASSESSMENT REPORT**

13,709
Part 5 of 5

DATA PLOTTED ON THIS MAP:

	FIELD	FILE
x POINTS:	AS	EXPL*V-193:EVA26/ROCKLOCAS

DIRECTION OF NORTH AT CENTRE OF MAP



PLACER DEVELOPMENT LIMITED	
DRAWN MAM	EVA 26 GRID AS IN ROCKS
DATE 84/11/09	
SCALE 1:5000	
	NO.

507500

508000

508500

EVA 26 GRID NI IN ROCKS

RESULTS IN PPM

5647500

5647500

5647000

5647000

5646500

5646500

5646000

5646000

507500

508000

508500

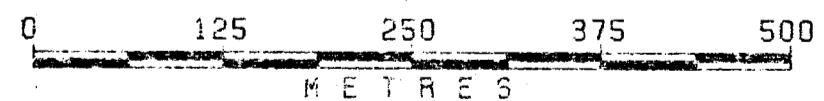
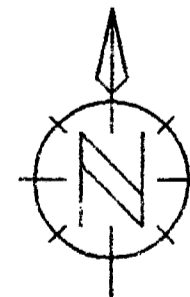
**GEOLOGICAL BRANCH
ASSESSMENT REPORT**

13,709
Part 5 of 5

DATA PLOTTED ON THIS MAP:

FIELD FILE
X POINTS: NI EXPL*V-193.EVA26/ROCKLOCAS

DIRECTION OF NORTH AT CENTRE OF MAP



DRAWN MAM		PLACER DEVELOPMENT LIMITED EVA 26 GRID NI IN ROCKS
DATE 84/11/09		
SCALE 1:5000		
		NO.

507500

508000

508500

EVA 26 GRID AU IN ROCKS
RESULTS IN PPM

5647500

5647500

5647000

5647000

5646500

5646500

5646000

5646000

507500

508000

508500

**GEOLOGICAL BRANCH
ASSESSMENT REPORT**

13,709

Part 5 of 5

DATA PLOTTED ON THIS MAP:

FIELD FILE
X POINTS: AU EXPL-V-193.EVA26/ROCKLOCAS

DIRECTION OF NORTH AT CENTRE OF MAP



DRAWN MAM		EVA 26 GRID AU IN ROCKS	
DATE 84/11/09			
SCALE 1:5000			
		NO.	

507500

508000

508500

EVA 26 GRID SB IN ROCKS

RESULTS IN PPM

5647500

5647500

5647000

5647000

5646500

5646500

5646000

5646000

507500

508000

508500

**GEOLOGICAL BRANCH
ASSESSMENT REPORT**

13,709

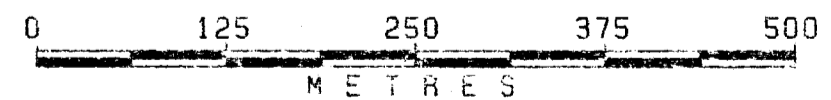
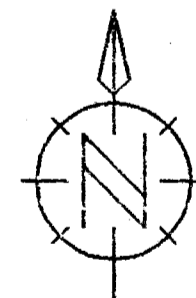
Part 5 of 5

DATA PLOTTED ON THIS MAP:

FIELD FILE

x POINTS: SB EXPL-V-193.EVA26/ROCKLOCAS

DIRECTION OF NORTH AT CENTRE OF MAP



PLACER DEVELOPMENT LIMITED

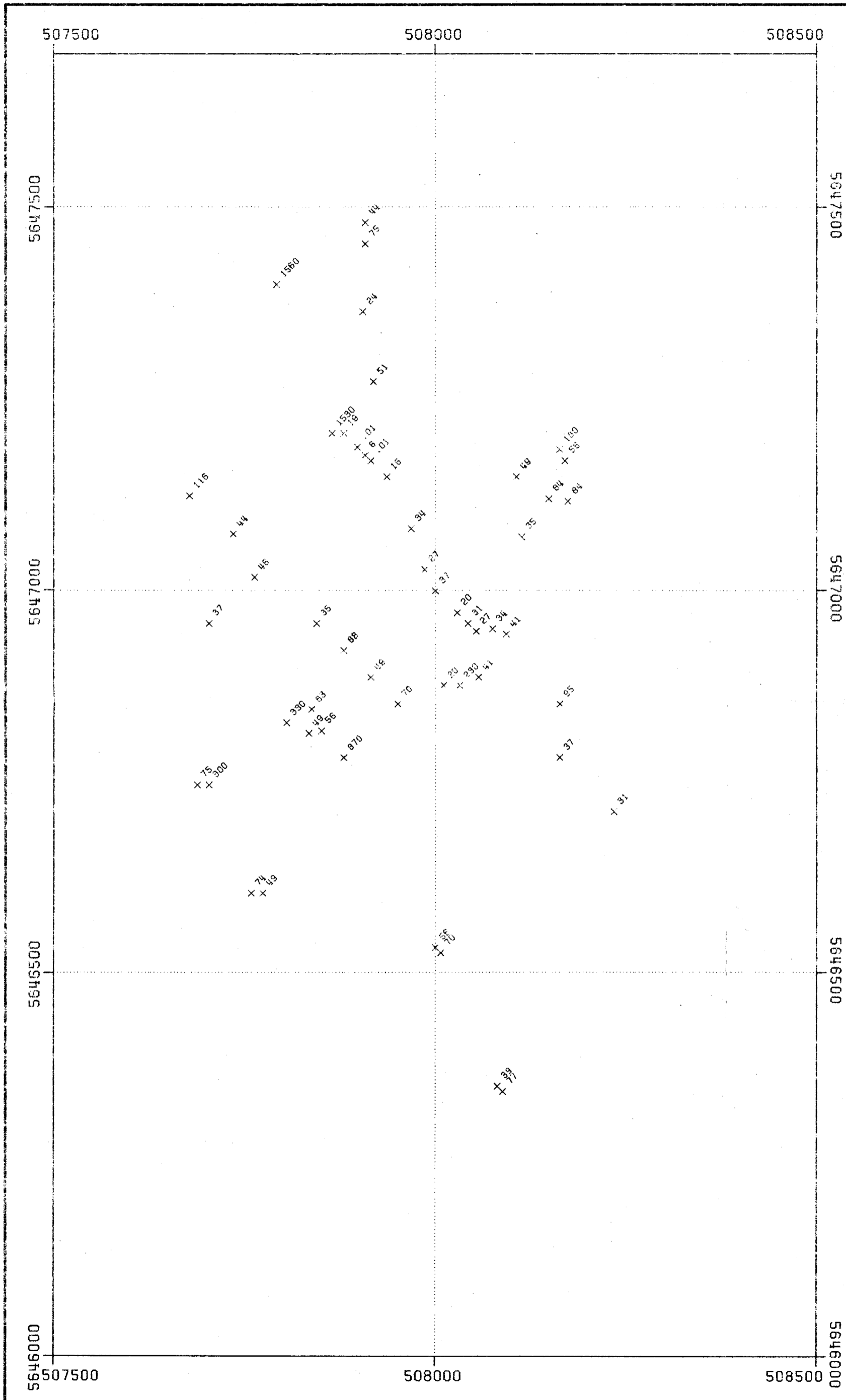
DRAWN MAM

EVA 26 GRID SB IN ROCKS

DATE 84/11/09

SCALE 1:5000

NO.



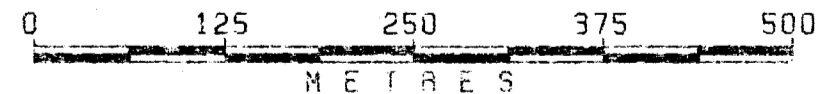
EVA 26 GRID HG IN ROCKS
RESULTS IN PPB

**GEOLOGICAL BRANCH
ASSESSMENT REPORT**

13,709
PART 5 of 5

DATA PLOTTED ON THIS MAP:
FIELD FILE
× POINTS: HG EXPL×V-193.EVA26/ROCKLOCAS

DIRECTION OF NORTH AT CENTRE OF MAP



DRAWN		MAM		EVA 26 GRID HG IN ROCKS	
DATE		84/11/09			
SCALE		1:5000			
				NO.	

EVA26 GRID CU IN SOIL

RESULTS IN PPM

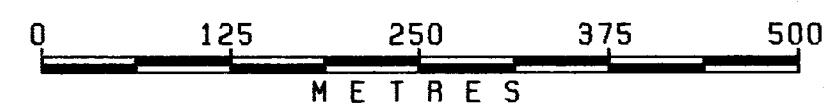
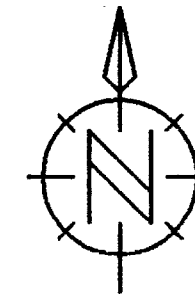
**GEOLOGICAL BRANCH
ASSESSMENT REPORT**

13,709
PART 5 of 5

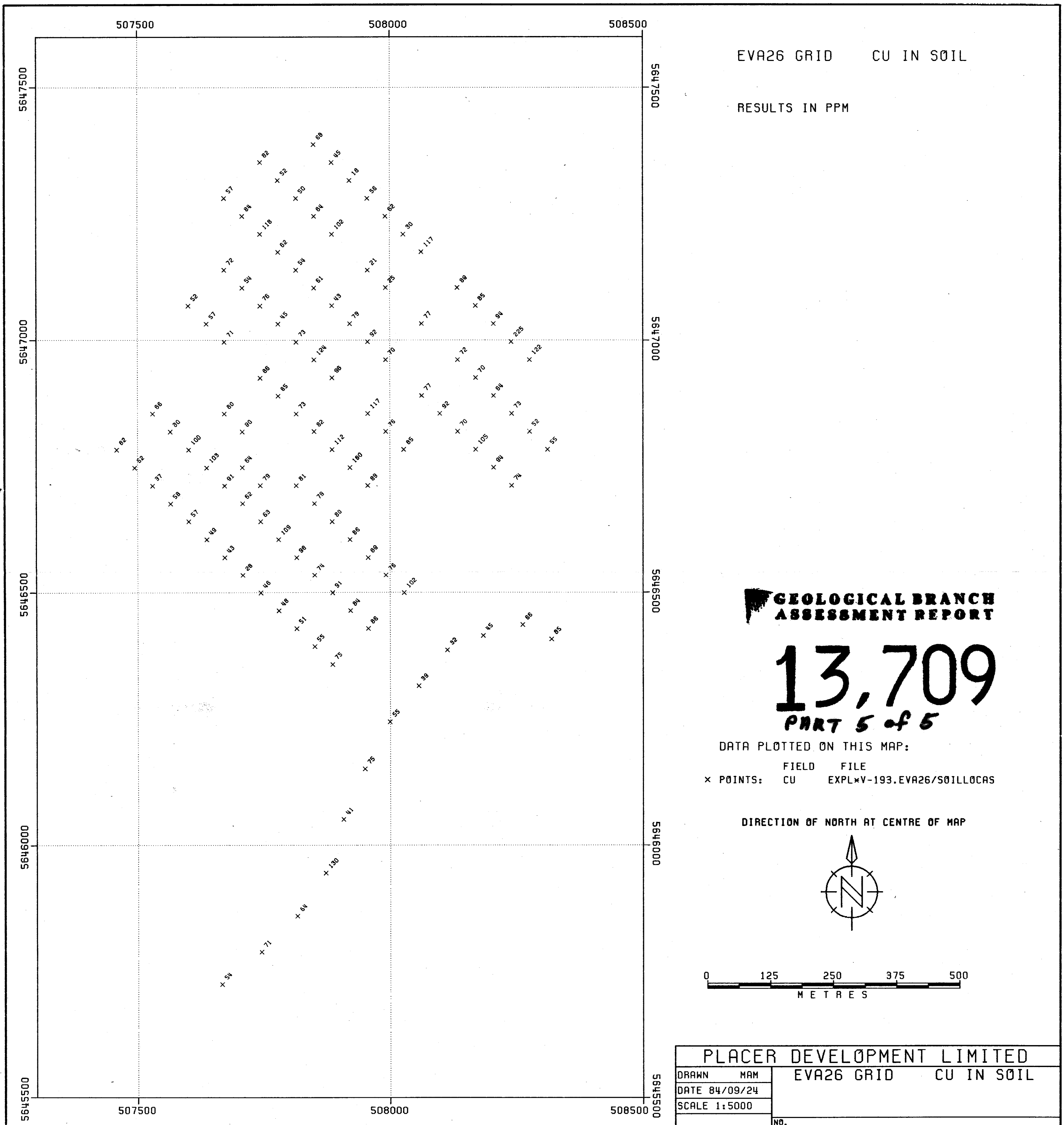
DATA PLOTTED ON THIS MAP:

FIELD FILE
X POINTS: CU EXPL*V-193.EVA26/SOILLOCAS

DIRECTION OF NORTH AT CENTRE OF MAP



PLACER DEVELOPMENT LIMITED	
DRAWN MAM	EVA26 GRID CU IN SOIL
DATE 84/09/24	
SCALE 1:5000	
	NO.



EVA26 GRID SB IN SOIL

RESULTS IN PPM

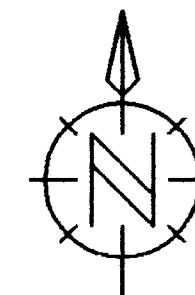
**GEOLOGICAL BRANCH
ASSESSMENT REPORT**

13,709
PART 5 of 5

DATA PLOTTED ON THIS MAP:

FIELD FILE
× POINTS: SB EXPL×V-193.EVA26/SOILLOCAS

DIRECTION OF NORTH AT CENTRE OF MAP



0 125 250 375 500
METRES

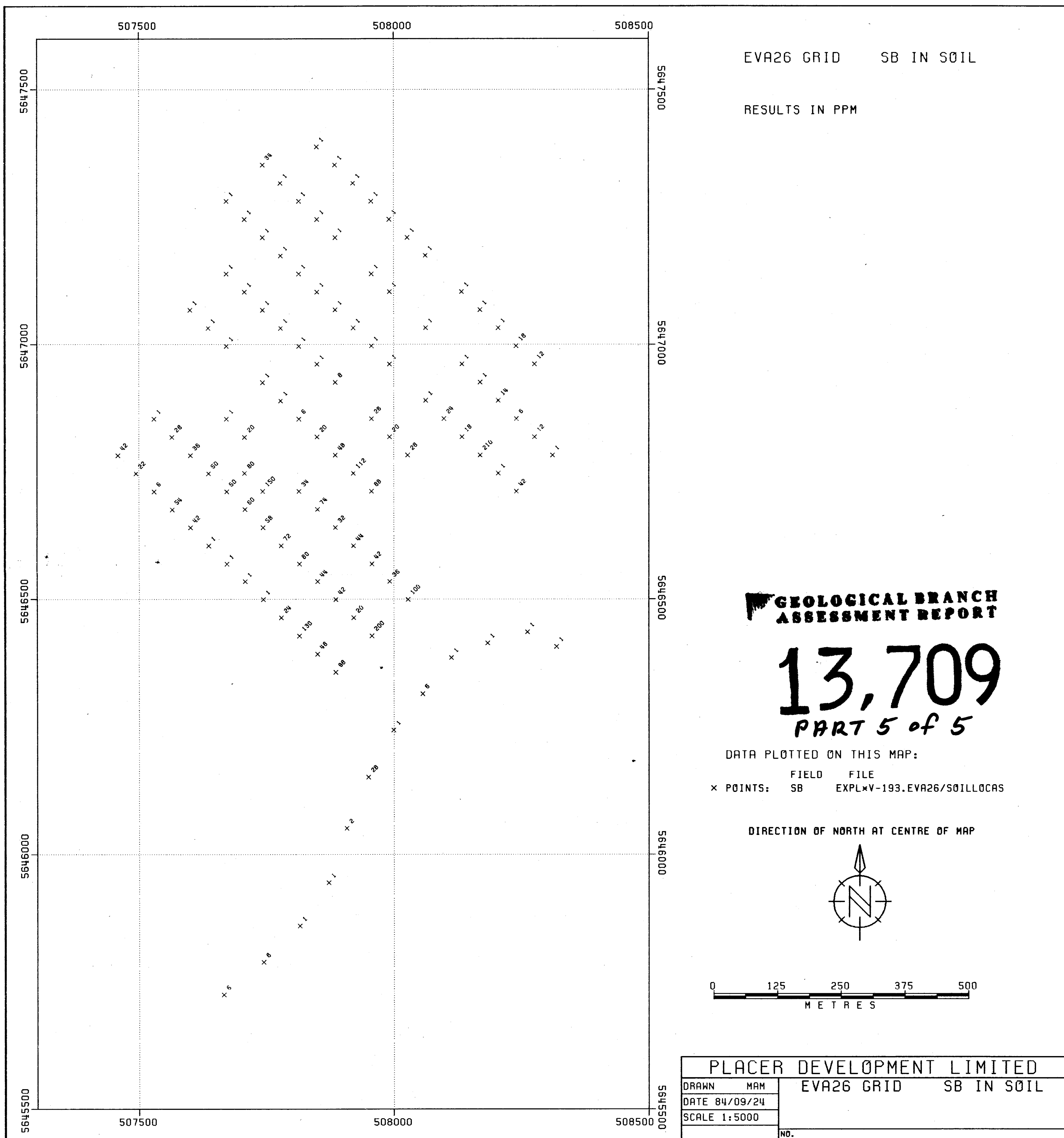
PLACER DEVELOPMENT LIMITED

DRAWN MAM EVA26 GRID SB IN SOIL

DATE 84/09/24

SCALE 1:5000

NO.



EVA26 GRID AG IN SOIL

RESULTS IN PPM

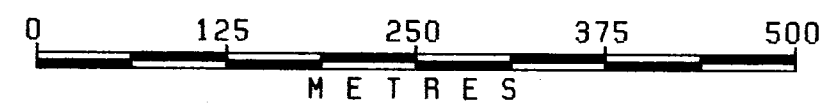
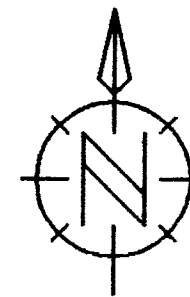
**GEOLOGICAL BRANCH
ASSESSMENT REPORT**

13,709
PART 5 of 5

DATA PLOTTED ON THIS MAP:

FIELD FILE
x POINTS: AG EXPL*V-193.EVA26/SOILLOCAS

DIRECTION OF NORTH AT CENTRE OF MAP



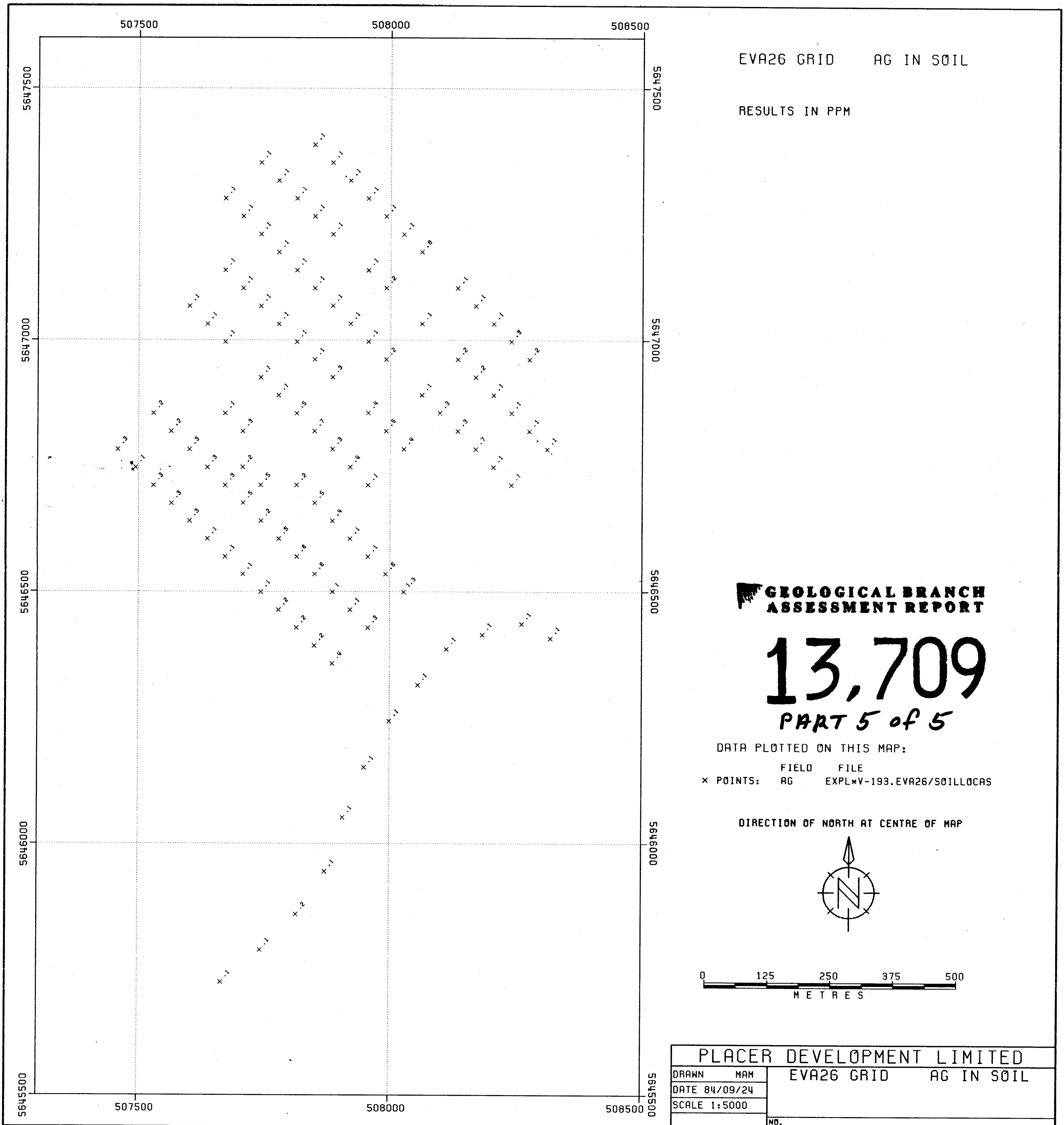
PLACER DEVELOPMENT LIMITED

DRAWN MAM EVA26 GRID AG IN SOIL

DATE 84/09/24

SCALE 1:5000

NO.



507500

508000

508500

5647500

5647500

5647000

5647000

5646500

5646500

5646000

5646000

5645500

5645500

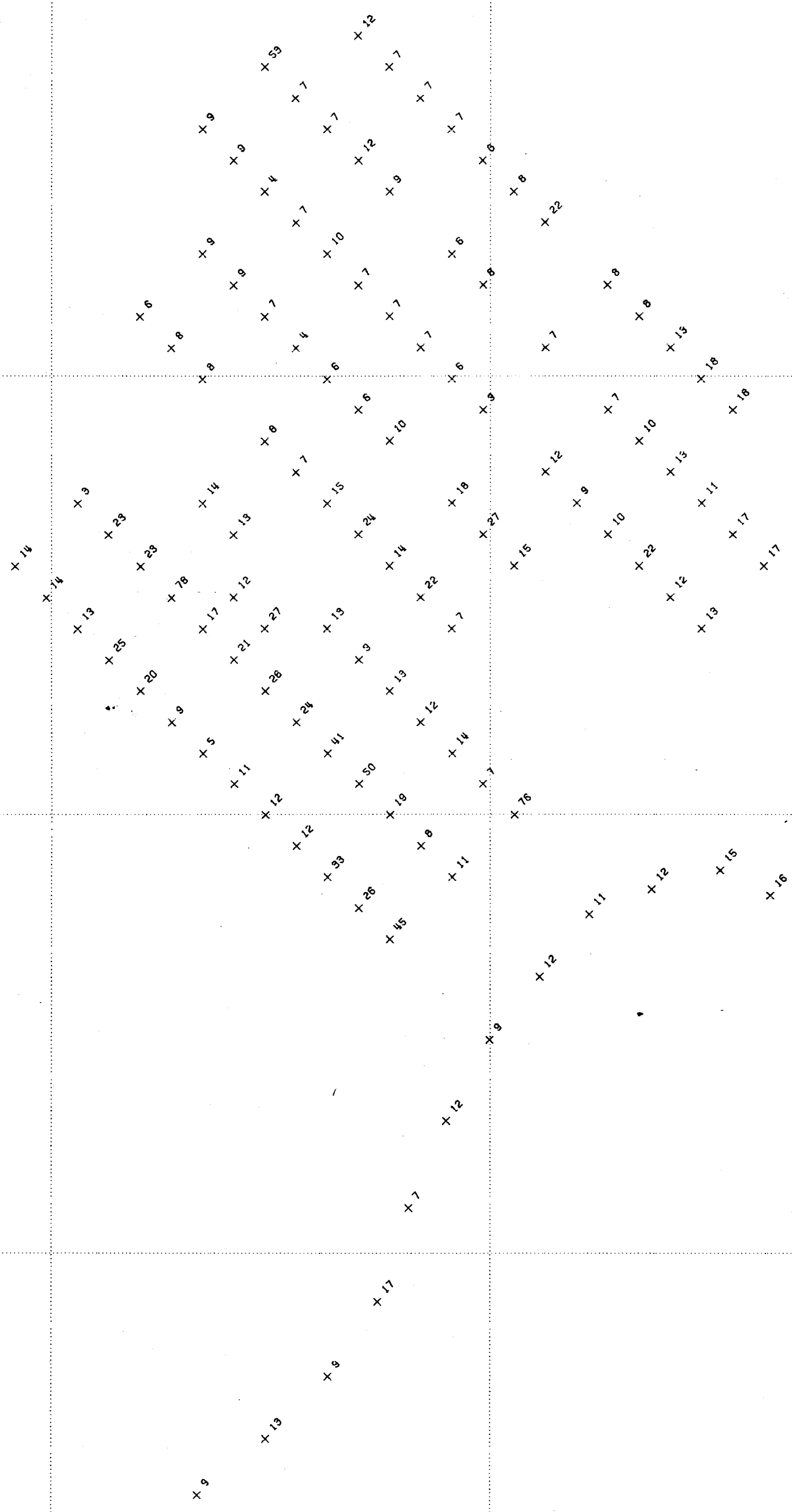
507500

508000

508500

EVA26 GRID PB IN SOIL

RESULTS IN PPM



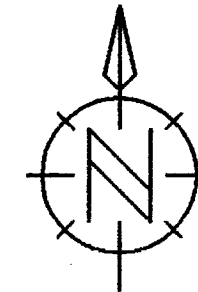
**GEOLOGICAL BRANCH
ASSESSMENT REPORT**

13,709
PART 5 of 5

DATA PLOTTED ON THIS MAP:

	FIELD	FILE
x POINTS:	PB	EXPLxV-193.EVA26/SOILLOCAS

DIRECTION OF NORTH AT CENTRE OF MAP



PLACER DEVELOPMENT LIMITED

DRAWN	MAM	EVA26 GRID	PB IN SOIL
DATE	84/09/24		
SCALE	1:5000		
		NO.	

507500

508000

508500

EVA26 GRID ZN IN SOIL

RESULTS IN PPM

5647500

5647500

5647000

5647000

5646500

5646500

5646000

5646000

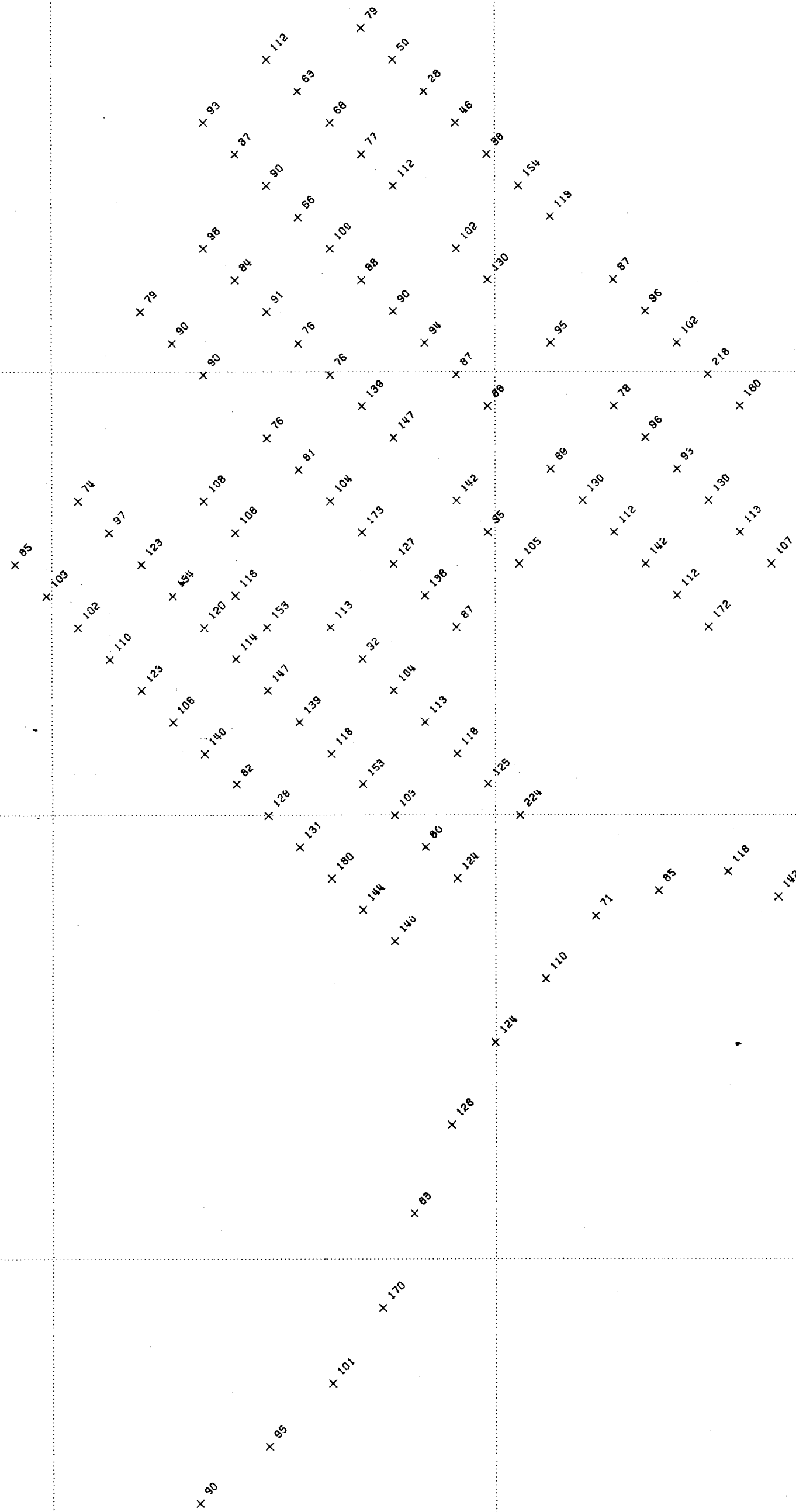
5645500

5645500

507500

508000

508500



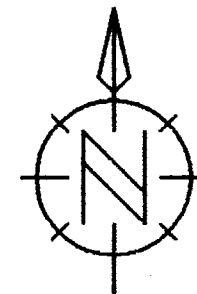
**GEOLOGICAL BRANCH
ASSESSMENT REPORT**

13,709
PART 5 of 5

DATA PLOTTED ON THIS MAP:

	FIELD	FILE
x POINTS:	ZN	EXPL*V-193.EVA26/SOILL0CAS

DIRECTION OF NORTH AT CENTRE OF MAP



PLACER DEVELOPMENT LIMITED

DRAWN	MAM	EVA26 GRID	ZN IN SOIL
-------	-----	------------	------------

DATE 84/09/24

SCALE 1:5000

NO.

EVA26 GRID AU IN SOIL

RESULTS IN PPM

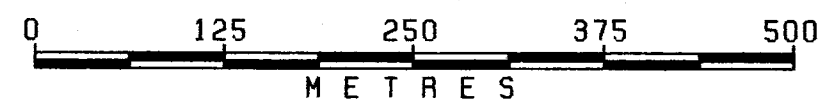
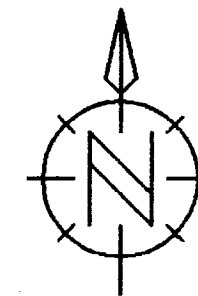
**GEOLOGICAL BRANCH
ASSESSMENT REPORT**

13,709
PART 5 of 5

DATA PLOTTED ON THIS MAP:

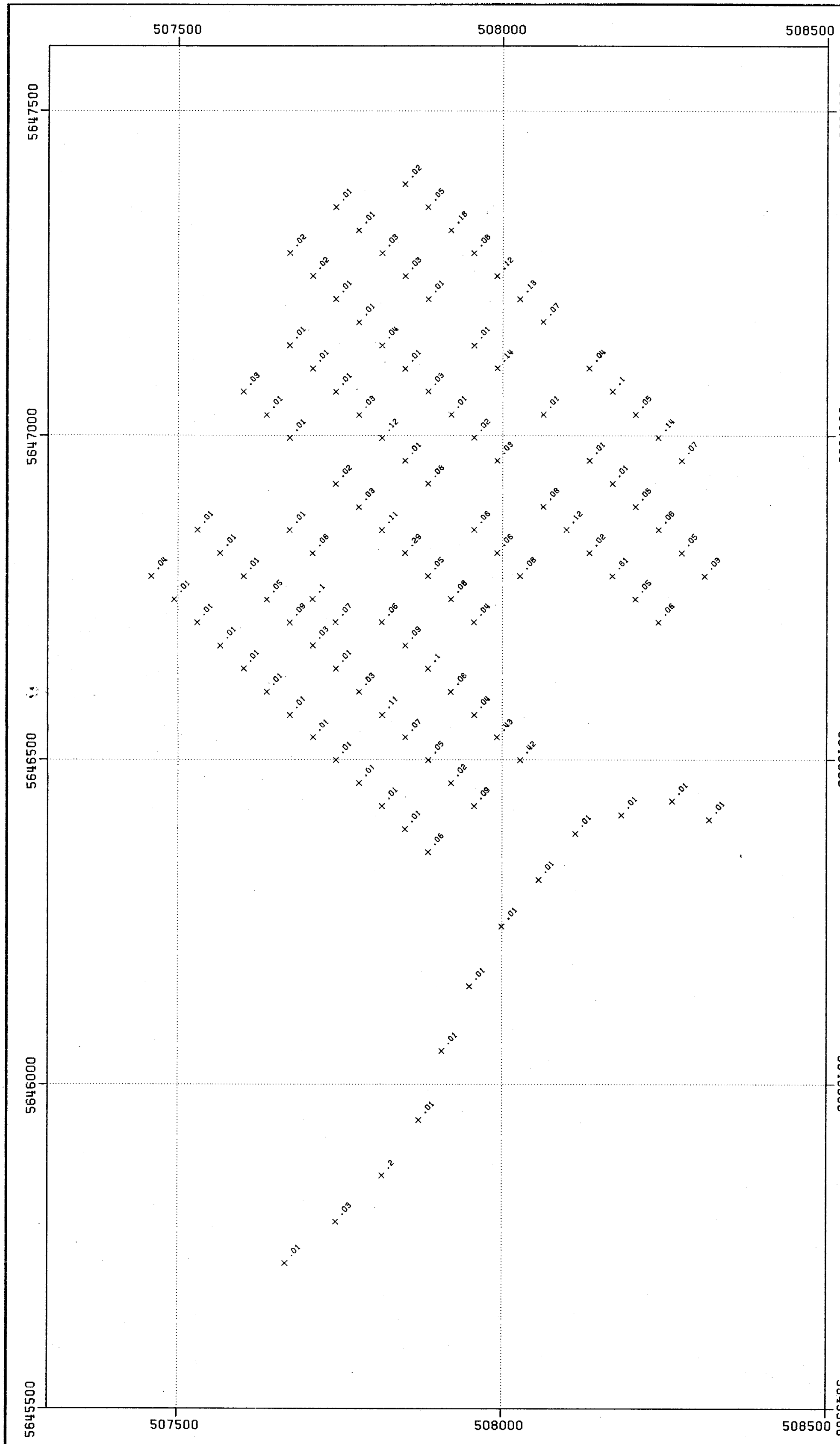
FIELD FILE
X POINTS: AU EXPLxV-193.EVA26/S0ILLOCAS

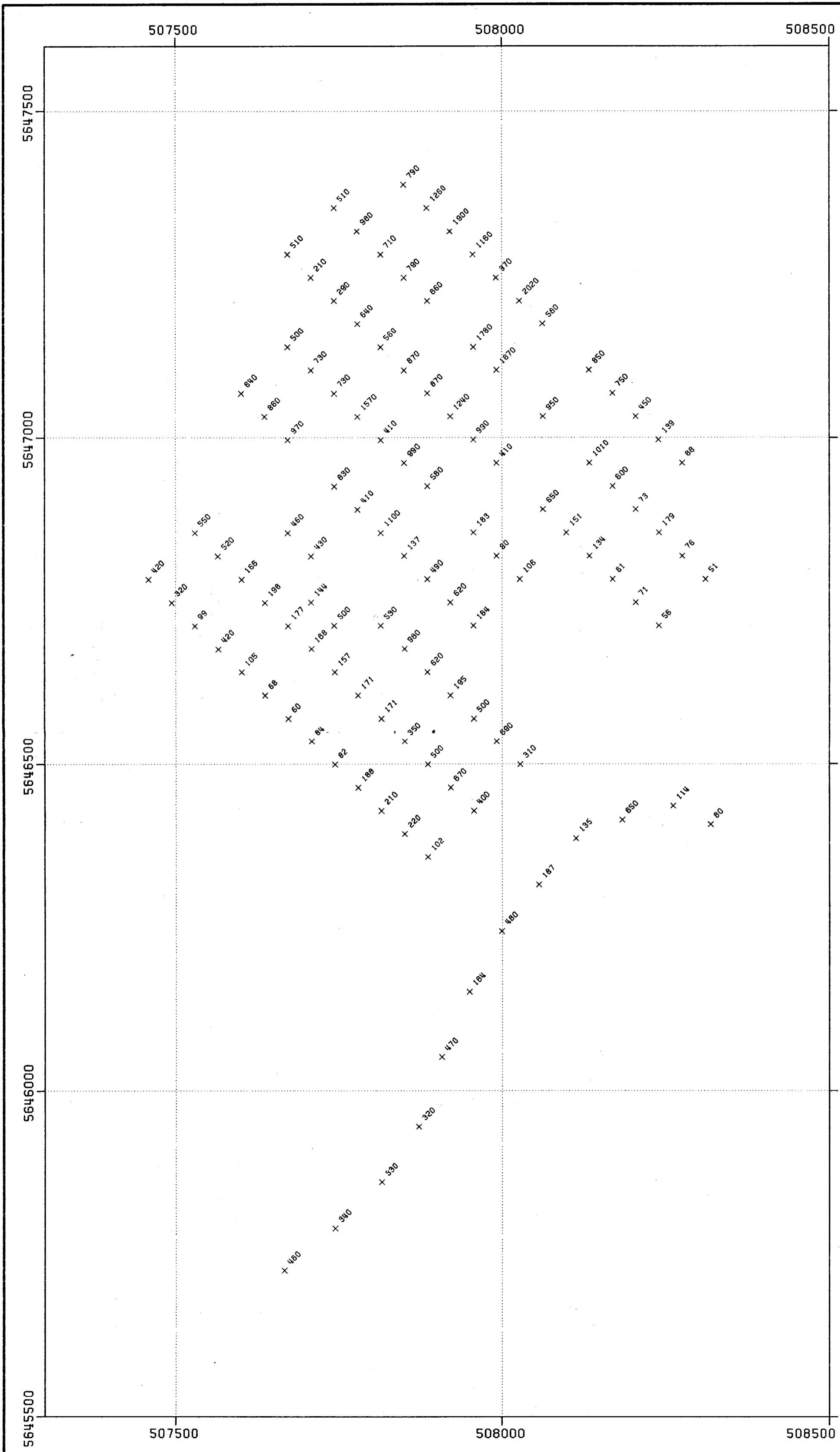
DIRECTION OF NORTH AT CENTRE OF MAP



PLACER DEVELOPMENT LIMITED

DRAWN	MAM	EVA26 GRID	AU IN SOIL
DATE	84/09/24		
SCALE	1:5000		
			NO.





EVA26 GRID NI IN SOIL

RESULTS IN PPM

**GEOLOGICAL BRANCH
ASSESSMENT REPORT**

13,709
PART 5 of 5

DATA PLOTTED ON THIS MAP:

FIELD FILE
x POINTS: NI EXPL*V-193.EVA26/SOILLOCAS

DIRECTION OF NORTH AT CENTRE OF MAP



PLACER DEVELOPMENT LIMITED

DRAWN	MAM	EVA26 GRID	NI IN SOIL
DATE	84/09/24		
SCALE	1:5000		
		NO.	

EVA26 GRID HG IN SOIL

RESULTS IN PPM

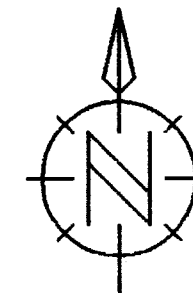
**GEOLOGICAL BRANCH
ASSESSMENT REPORT**

13,709
PART 5 of 5

DATA PLOTTED ON THIS MAP:

FIELD FILE
× POINTS: HG EXPL*V-193.EVA26/SOILLOCAS

DIRECTION OF NORTH AT CENTRE OF MAP



0 125 250 375 500
METRES

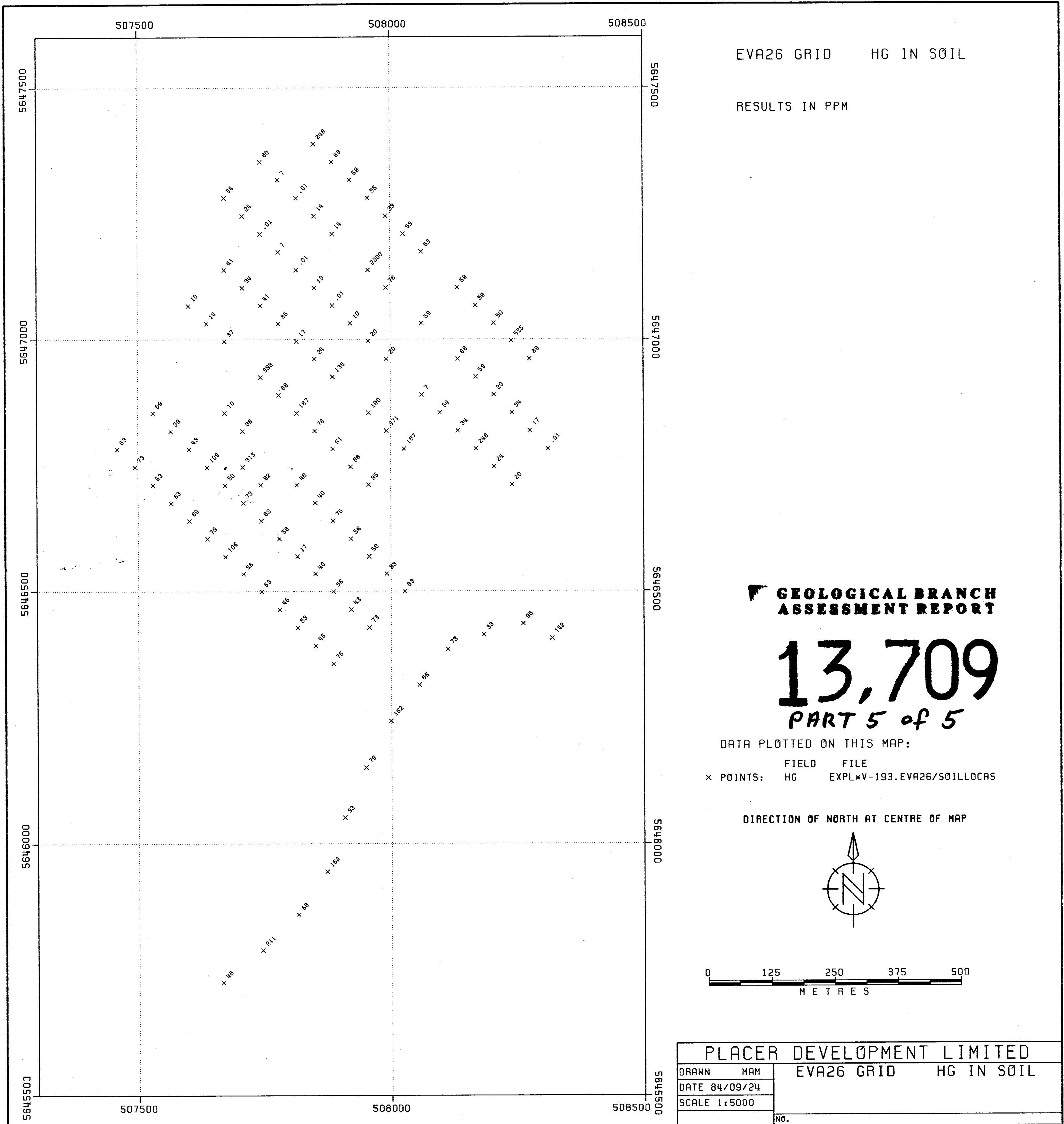
PLACER DEVELOPMENT LIMITED

DRAWN MAM EVA26 GRID HG IN SOIL

DATE 84/09/24

SCALE 1:5000

NO.



EVA26 GRID AS IN SOIL

RESULTS IN PPM

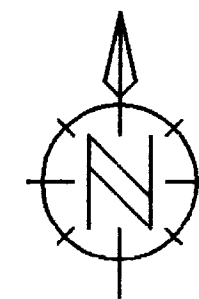
**GEOLOGICAL BRANCH
ASSESSMENT REPORT**

13,709
PART 5 of 5

DATA PLOTTED ON THIS MAP:

FIELD FILE
× POINTS: AS EXPL*V-193.EVA26/S01LL0CAS

DIRECTION OF NORTH AT CENTRE OF MAP



0 125 250 375 500
METRES

PLACER DEVELOPMENT LIMITED

DRAWN MAM
DATE 84/09/24
SCALE 1:5000

EVA26 GRID AS IN SOIL

NO.

