

85-424 6186

**GEOLOGICAL BRANCH  
ASSESSMENT REPORT**

**13,722**

BOLD 3 CLAIM GEOLOGICAL

ASSESSMENT REPORT

NANAIMO MINING DIVISION, VANCOUVER ISLAND, BC

REPORT NO:

Author: I Lyn

Owner & Operator:

Brinco Mining Ltd.

NTS: 92 F/13e

Latitude: 49° 51'N

Longitude: 125° 32'W

Date: April 1985

*I Lyn*

TABLE OF CONTENTS

	PAGE
SUMMARY . . . . .	1
LOCATION AND ACCESS . . . . .	2
PROPERTY . . . . .	2
GEOLOGY . . . . .	2
APPENDIX 1    itemised cost statement . . . . .	6
APPENDIX 2    statement of qualification . . . . .	7
 <u>LIST OF MAPS</u>	
FIGURE 1    location . . . . .	3
FIGURE 2    claim map            1:50,000 . . . . .	4
FIGURE 3    geology, Bold 3    1:5,000 . . . . .	5

SUMMARY

The single unit Bold 3 claim is adjacent to, and partially overlaps, the Bold 2 claim near upper Quinsam Lake on Vancouver Island. It was staked to protect an area of interest on the northern boundary of the Bold 2 claim. It was mapped geologically in November 1984. The claim is underlain predominantly by Quinsam Granodiorite within which there are pendants of Karmutsen basalt and Quatsino limestone which have been largely altered to skarn.

F Lynn

### LOCATION AND ACCESS

The Bold 3 claim is located 28 km southwest of Campbell River in the Nanaimo Mining Division on Vancouver Island, map sheet 92 F/13 (Figs 1 and 2). Access by road from Campbell River is by Highway 28 to Echo Lake, then by main logging road to the old Argonaut Mine on Upper Quinsam Lake and then by local logging roads, the total distance being approximately 35 km. Local logging branches 1-1 and 2-1 from the Mine Creek branch road enter the claim.

### PROPERTY

The Bold 3 Claim of 1 unit was staked on November 3rd and recorded November 9th, 1984, record No. 1957 (11). It is owned and operated by Brinco Mining Ltd. of Vancouver, B.C. No history of prior work on the claim is known.

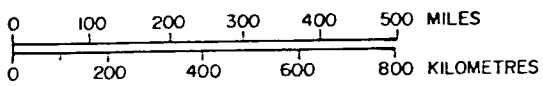
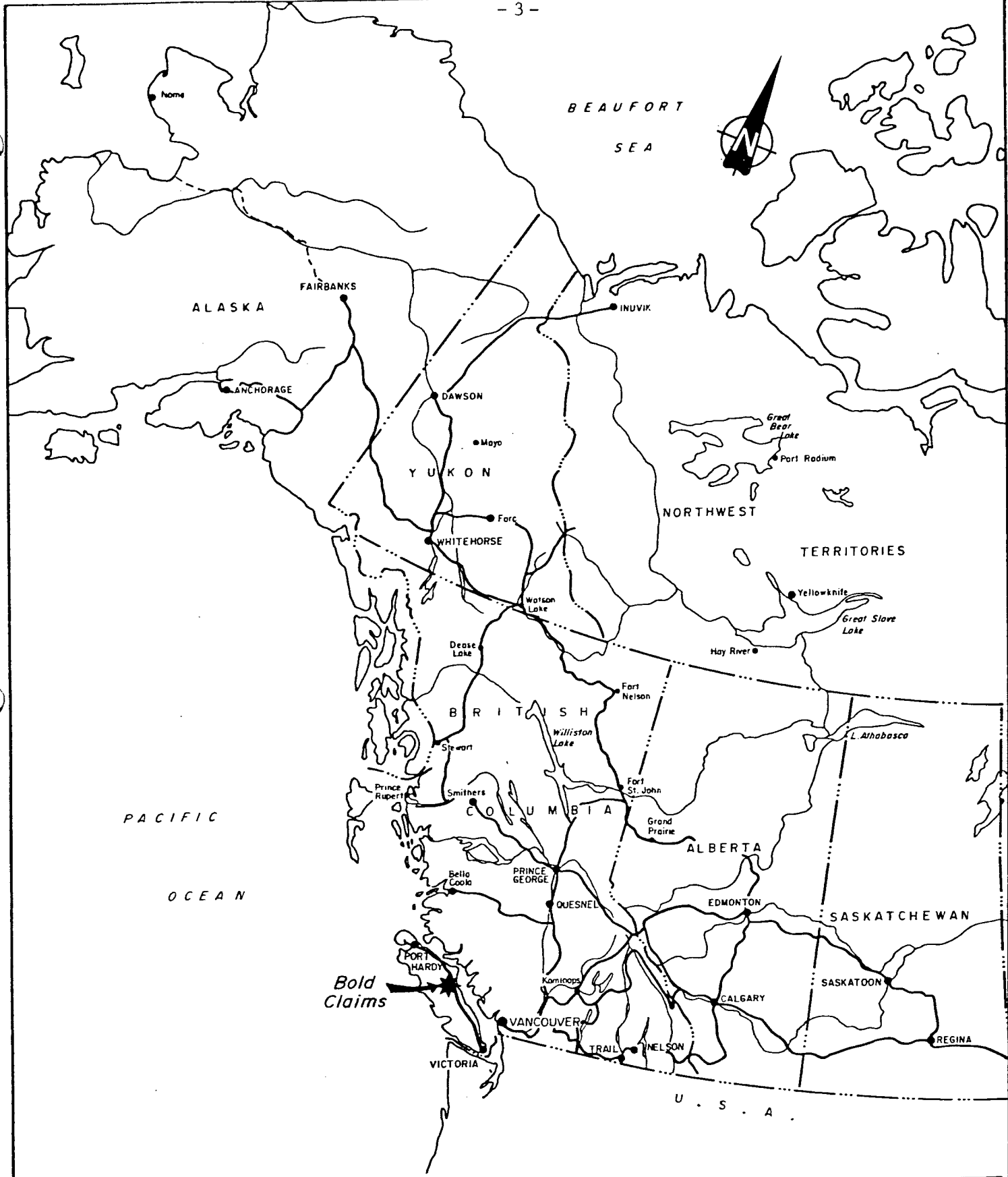
### GEOLOGY

Work was done on the claim on November 4th and 5th. It was mapped at a scale of 1:5,000 (Fig. 3). The base map used was an enlargement of N.T.S. sheet 92 F/13 on which logging roads were plotted by use of airphotos and ground surveying. Most of the claim has been clear-cut and there is abundant outcrop.

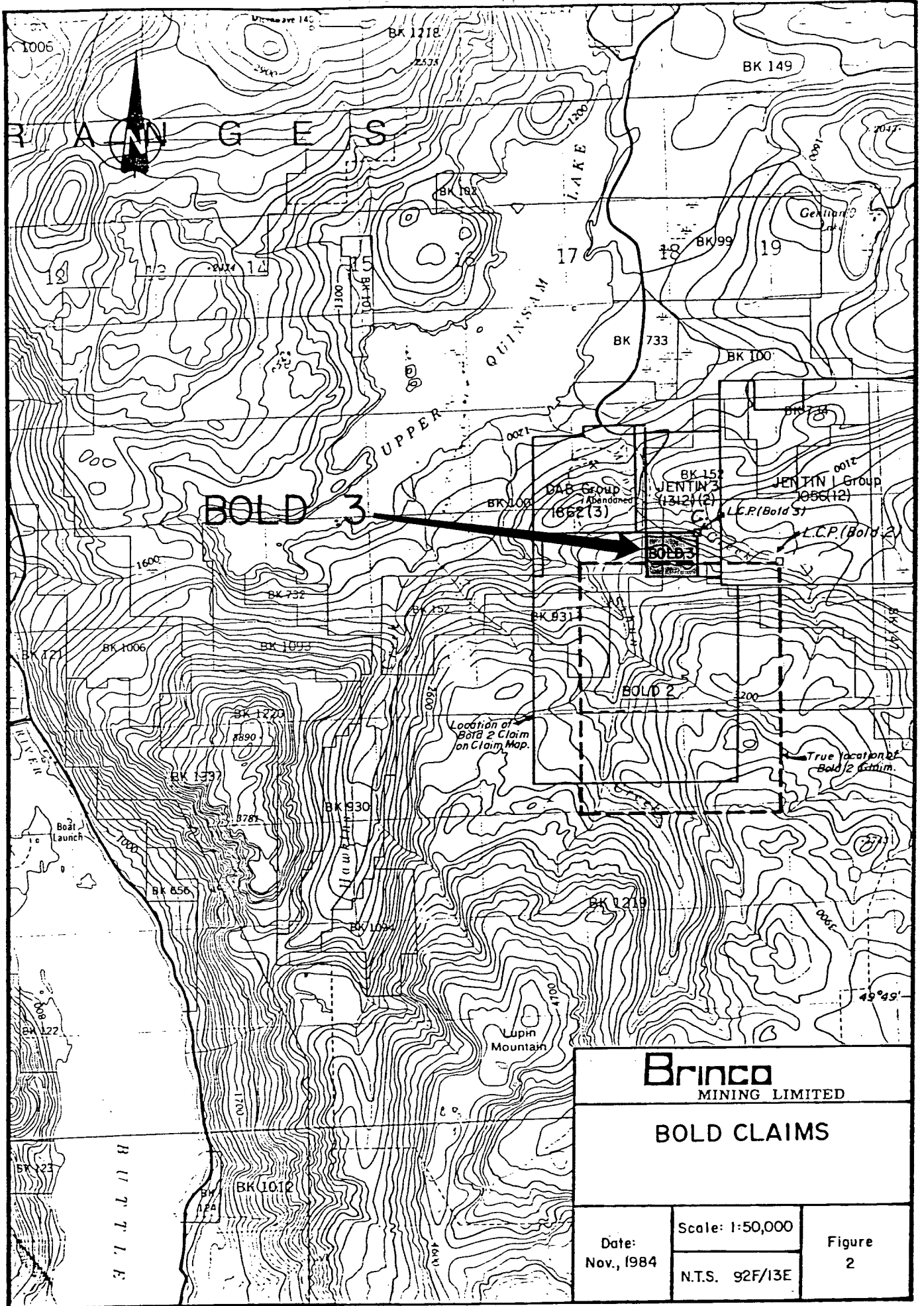
Most of the claim is underlain by Granodiorite of the Jurassic Quinsam intrusion. The claim is situated near the boundary of the batholith (which is a couple hundred metres south) and there are pendants of the country rocks in the Granodiorite. These are Upper Triassic Quatsino limestone and skarn. The skarns are predominantly garnet with minor clinopyroxene and epidote and with magnetite in places. On the adjacent Bold 2 claim the skarns were seen to be generally replacements of Karmutsen basalt, with lesser replacement of the Quatsino limestone. No basalt was seen on the Bold 3 claim. No sulphides were seen in the skarn on Bold 3. The granodiorite is fresh and unaltered.

### REFERENCE

- Lyn, I., 1984 Bold 2 Claim Geological Assessment Report  
Nanaimo Mining Division, Vancouver Island, B.C.  
Brinco Mining Limited report submitted November  
1984.



<b>Brinco</b> MINING LIMITED	
<b><u>BOLD CLAIMS</u></b> PROPERTY LOCATION MAP	
DATE: Nov., 1984	FIGURE: I



**Brinco**  
MINING LIMITED

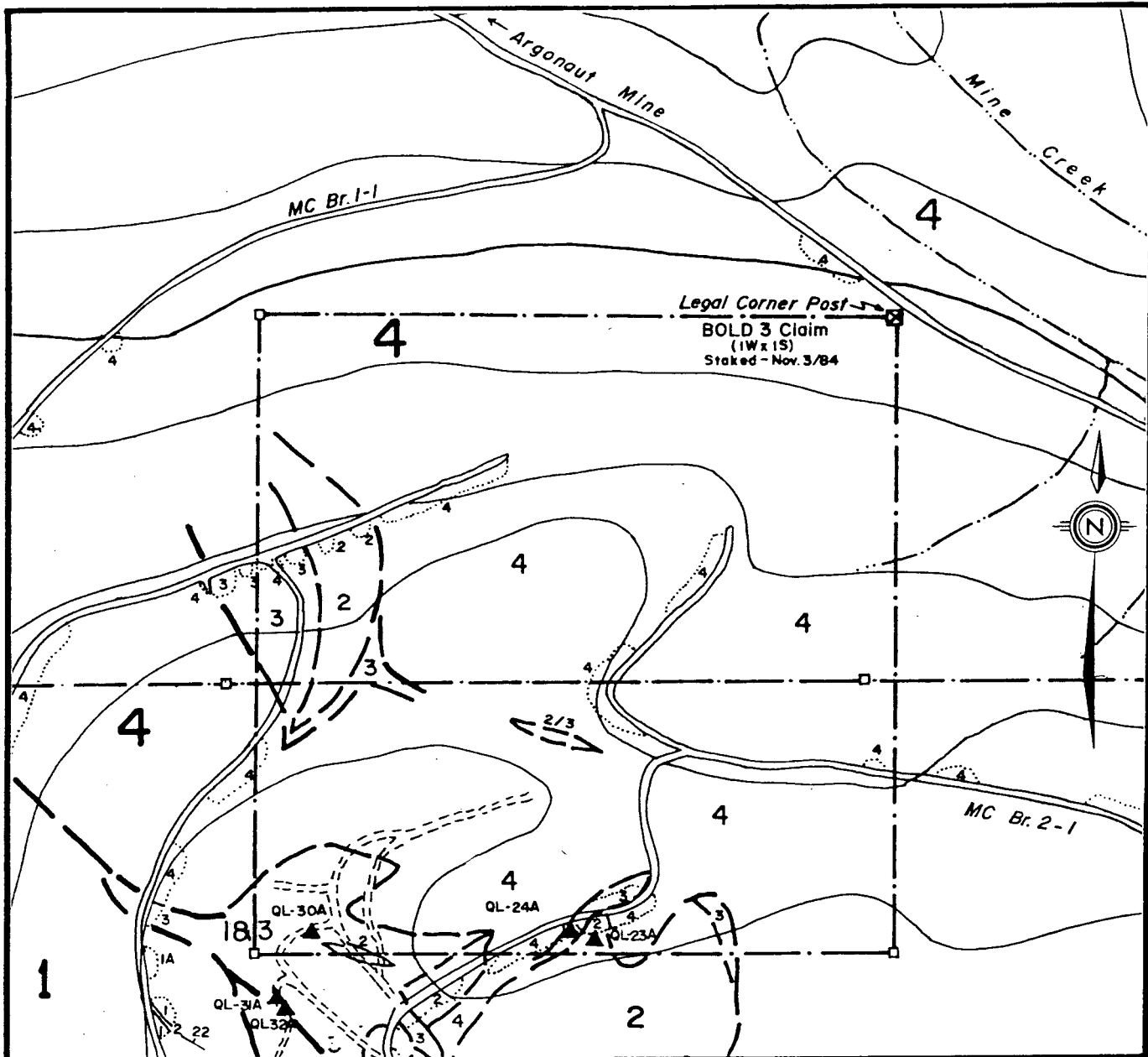
**BOLD CLAIMS**

Date:  
Nov., 1984

Scale: 1:50,000

N.T.S. 92F/13E

Figure  
2



**LEGEND**

- |   |   |
|---|---|
| <p>5D Greenstone Dykes</p> <p><b>JURASSIC</b></p> <p>4 Granodiorite</p> <p>4A Propylitic Alteration</p> <p>3 Skarn (Epidote, Garnet, Magnetite)</p> <p><b>UPPER TRIASSIC</b></p> <p>2 Quatsino Formation: limestone</p> <p>1 Karmutsen Formation: basalt, pillows, flows</p> <p>1A Altered, partial skarnification.</p> | <p>lake</p> <p>stream</p> <p>logging road</p> <p>trail</p> <p>claim boundary with post</p> <p>outcrop</p> <p>small outcrop</p> <p>contact</p> <p>bedding</p> <p>attitude of contact</p> <p>▲ QL-1A rock sample location with nomenclature</p> |
|---|---|



**Brinco**  
MINING LIMITED

**BOLD 3 CLAIM  
GEOLOGY**

FIG. 3 RPT.	1: 5000	APR. 85
	92 F/13	DRAWN BY: IL TRACED BY: HH

APPENDIX 1



BOLD 3 CLAIM ITEMISED COST STATEMENT

Operator: Brinco Mining Limited

Geologist	1½ days @ \$145.00/day	217.50
Food and Accommodation		42.85
Vehicle	1½ days @ \$35.00/day	52.00
Field Supplies		10.00
Report Preparation		150.00
	TOTAL	<u>\$472.35</u>

APPENDIX 2

Statement of Qualifications

I, Ian A. Lyn, of 32B West 11th Street, Vancouver, B.C. hereby certify that:

1. I received a Bachelor of Science degree in Geology from the University of Toronto in 1978.
2. I am a member of the Canadian Institute of Mining and Metallurgy, and associate of the Geological Association of Canada.
3. I have been employed by Brinco Mining Limited since 1978.

*Ian Lyn*

---

Ian A. Lyn