

**GEOLOGICAL BRANCH
ASSESSMENT REPORT**

85- 478 - 13766
7/86

13,766

A Diamond Drill Assessment Report

on the

ENERGITE CLAIMS

Located in the

Kamloops Mining Division

Lat. $51^{\circ}21'N$; Long. $119^{\circ}58'W$

Map Sheet, N.T.S. 82M/5 West Half

(North Barriere Lake Area)

for

KAM CREED MINES LTD.

P.O. Box 668

Sicamous, British Columbia

(Field work between Sept. 8-25, 1984)

Report by:

Mr. D.G. Cardinal, P.Geol.

Consulting Geologist

Hope, B.C.

November 12, 1984

Don Cardinal

TABLE OF CONTENTS

	PAGE
INTRODUCTION	1
LOCATION AND ACCESS	2
PROPERTY INFORMATION	2
BRIEF HISTORY	3
GEOLOGY	3
DRILL RESULTS AND OBSERVATIONS	4
CONCLUSIONS	8
COST BREAKDOWN	9

FIGURES:

1. Location Map
2. Claims Map
3. Drill Locations

APPENDICES:

- I CERTIFICATE
- II REFERENCES
- III CERTIFICATE OF ANALYSIS

INTRODUCTION

The Energite Claim Group is presently held by Kam Creed Mines Ltd., which has conducted systematic exploration programs over the past several seasons on the property. Recently, a geophysical, electromagnetic survey outlined a strong conductive zone that was traced for 6000 ft. A soil geochemical anomaly is also coincident with the conductive zone.

This field season (1984), Kam Creed carried out three (3) diamond holes to test the conductor and to test an auriferous quartz-shear zone. Only one (1) drill hole was completed on the 6,000 ft. conductor: undoubtedly, further drilling will be required to properly test the zone. In order that proper drill sites are located in the future, detail geological mapping of the bedrock geology and its' structures will also be required.

The writer was requested by Kam Creed to briefly examine the old workings and describe the drill core.

LOCATION AND ACCESS

The Energite Claim Group is located some 46 km. north-east of the town of Barriere, B.C., and approximately 5 km. northwest of North Barriere Lake. The claims cover a portion of the headwaters of Birk Creek which drains into the lake.

Access to the property is readily available by a secondary gravel road from Barriere and then by a log haul road which cuts across the property.

Barriere is situated some 66 km. north of Kamloops, B.C. and is serviced by the C.N.R. and the No. 5 or Yellowhead Highway.

PROPERTY INFORMATION

The Energite property consists of 40 located, contiguous mineral claims which fall in the Kamloops Mining Division with co-ordinates, Lat. $51^{\circ}21'N$; and Long. $119^{\circ}50'W$. The claim records can be examined at the Kamloops Mining Recorder Office.

The pertinent data is as follows:

<u>Claim Name</u>	<u>Record numbers</u>	<u>Anniversary Date</u>
Energite 1-6 incl.	81785-90	July 22
Energite 7-8	98209 - 10	July 15
Energite 9-12 incl.	69696- 99	July 9
Energite 13-14	90014- 15	July 9
Energite 15-32 incl.	98211- 28	July 15
Energite 33-40 incl.	98381- 88	July 21

BRIEF HISTORY

The ground was first staked in 1924 by a group of prospectors from Barriere, B.C. - Mess'rs. N. Farsberg, O. Bolin and C.E. Johnston. Over the next 12 years access skid-roads, trails, and several bridges were constructed to the area. Several exploration open cuts, trenches, and short drifts were developed; testing quartz veins containing pyrite, chalcopyrite, sphalerite and galena.

The ground subsequently lapsed and no mining activity in the area was reported. In 1968, the area was staked by the present owners who have gradually carried out extensive surface exploration on the property. The work has included bulldozer stripping, trenching, 6,000 ft. geophysical survey, and a recent follow-up drilling programme.

GEOLOGY

Regionally, the bedrock geology consists of a structurally complex sequence of bedded chert, fine to coarse grain clastics (e.g. argillites, slates, sandstone etc), and greenstone volcanics of Devonian to Permian age. The rocks trend northerly, associated with a complex series of thrust faults.

The claims are underlain by north trending graphitic argillites, banded iron-carbonate cherts, and semi-concordant felsic dykes. Abundant graphitic shears can be observed near the old workings. Mineralized quartz veins are also sheared,

Cont'd

GEOLOGY Cont'd

and pinch and swell along strike. The veins tend to be concordant with the fabric of the rock. Along the northeast boundary of the claims, the sediments are intruded by granitic intrusives.

Several of the quartz lenses mentioned above were reported to assay up to gold 0.18 oz/ton; silver 30.8 oz/ton; lead 19.83%; and, zinc 8.29%. A five ton bulk sample sent to Cominco assayed Gold ~~0.16 oz/ton~~^{5.59/5}; Silver ~~20.65 oz/ton~~^{707.9/6}; Copper 0.25%; Lead 27.4%; and Zinc 13.3%.

DRILL RESULTS AND OBSERVATIONS

In 1981, geochemical and geophysical surveys delineated an anomalous zone striking some 6,000 ft. in length. This season, September, 1984, an exploratory drill programme was conducted to test a portion of this geophysical conductive zone.

Three (3) drill holes were completed for a total footage of 578 feet. Hole number 84-3 was drilled on gridline 0+00 and 65 ft. east of the baseline. Two (2) other holes, nos. 84-4 and 84-5 were drilled near a short adit to test the continuation of a heavily sulfided quartz-shear zone.

The core was described with some sections split and bagged for analysis; the bags were marked according to drill hole number and footage. The drill core is stored on the

Cont'd

DRILL RES LTS AND OBSERVATIONS Cont'd

property, near the drill site and in a trailer. It can be examined on request.

The core log descriptions are as follows:

(core described by D.G.Cardinal, Geologist, Sept. 16, 1984)

DRILL LOG

Drill Hole No.	Footage Interval From - To	Description	Sample of Interval	Assay Au (oz/ton)
84-3	5' - 72'	Dk. grey argillite, highly sheared with rounded white felsic fragments. Foliation approx. 80° to core axis. Graphitic shears with disseminated pyrite throughout much of core. In places, pyrite appears to be in lenses or in bedded form. Argillite occasionally carries fine quartz stringers.	65'-68' pyrite & argillite	1.999/t .058
	72' - 118'	Dk. grey graphitic argillite with abundant slicken sides and shears; @ 67'-77' indurated siliceous argillite; @ 89'-102' black graphitic-pyritiferous gouge.	89'-93' gouge 114.5' - 115.5' quartz & argillite	0.079/t .002
	118'-180'	Med. to Dk grey argillite w/ graphitic shears in part siliceous. Occasional fine quartz stringers and micro veinlets of quartz/albite. minor blebs of pyrite. Foliation and shears approx. 80° to axis of core.		
	180'- 190'	same as above		

DRILL LOG Cont'd

Drill Hole No.	Footage Interval From - To	Description	Sample of Interval	Assay Au (oz/ton) <i>g/ton</i>
84-3	190'-216'	Grey massive and sheared recrystallized limestone. @ 196' quartz vein 4 inch wide.	196-197 quartz & limestone.	0.03 .001
	216'-246'	Med.-Dk. grey argillite with subrounded granitic fragments. Bedding and foliation approx. 80° to axis of core, occasional blebs of pyrite with minor fine pyrite laminations.		
	246'-253'	Grey recrystallized limestone.		
	253-285	Dk. argillite with shear fragments, blebs of pyrite and minor quartz stringers.		
	285-364	Dk. grey conglomeratic argillite: occasional well rounded cobbles and rip-up clasts. Disseminated blebs of pyrite.		
	364-411	Dk. grey argillite, very steep (80°) to shallow (50°) foliation to axis of core. Fault gouge @ 389'-393'.		390.5-392 gouge and pyrite
<u>End of Hole</u>				
84-4	8-26	Dk. grey argillite, sheared with light grey, felsic fragments. Foliation and bedding approx. 80° to core axis.		
	26-28	Approx. 60%-80% of pyrite by volume. Quartz stringers @ 27 ft.	26-28 pyrite	0.14 .004
	28-33.5	Same as section 8'-26'		
	33.5 - 66	Graphitic, sheared argillite with occasional cubic pyrite @ 51.5 - 53 fractured, oxidized with argillite	51.5 - 53	0.23 .001

DRILL LOG Cont'd

Drill Hole No.	Footage Interval From - To	Description	Sample of Interval	Assay Au (oz/ton)
84 - 4	66 - 72	Lt. grey conglomerate with disseminated pyrite. Abundant slicken sides. 8 in. quartz vein @ 70 - 70.8'		
	72 - 88	Lt. green felsic porphyry w/ minor cubic pyrite; gouge @ 88-90.		
	90 - 97	Dk. grey argillite, quartz stringers @ 94.5 and A 91,0	89.5 - 91 quartz stringers	0.07 g/t .002
		<u>End of Hole</u>		
84-5	0 - 35	0 -3 drill stem and gravel 3 - 35, dk. grey, graphitic argillite with abundant shear and gouge. Pyrite seams along fractures and bedding planes. Occassional small quartz stringers.		
	35 - 42	Dk. grey argillite with minor subrounded granitic pebbles and angular fragments. Foliation approx. 60° to axis of core.	40 - 42 quartz stringers	0.58 .017
	42 - 58	Dk. grey graphitic argillite with disseminated cubic pyrite.		
	58 - 63	Dk. grey argillite, minor quartz veinlets.		
	63 - 70	Graphitic argillite with minor disseminated pyrite. Minor quartz veinlets.		
		<u>End of Hole</u>		

CONCLUSIONS

The Energite mineral claims are located some 46 km. north-east of the town of Barriere, B.C., and are easily accessible by well maintained roads. The property consists of 40 contiguous claims which fall in the Kamloops Mining Division. The claims were originally worked by a group of prospectors from Barriere in which a series of trenches and short drifts were developed. Kam Creed Mines Ltd. presently holds the ground and is continuing to carry out surface exploration each field season.

The claims are underlain by a tectonically complex sequence of highly faulted and folded sediments of low metamorphic grade. A thick, monotonous sequence of graphitic argillite and banded chert occur around the old workings. Several sub-parallel quartz lenses are hosted in the argillites and characteristically pinch and swell along strike. Some of the vein and lenses are polymetallic, carrying various amounts of copper, lead, zinc, silver and interesting gold. A five ton bulk sample obtained from one of the lenses returned ^{5.5916} 0.16 oz/ton gold; ^{707 9/16} 20.65 oz./ton silver; 0.25% copper; 27.4% lead; and 13.3% zinc.

Three (3) diamond drill holes were completed on the property, one hole tested a geophysical (E.M.) conductive zone and two holes tested a sulphide quartz vein adjacent to a short drift. The holes intersected mostly graphitic argillite and

Cont'd

CONCLUSIONS Cont'd

minor narrow quartz veins.

Further drilling along the strong, 6,000 ft. conductive zone may encounter encouraging sulphides. Detail geological mapping, outlining the orientation of quartz veins near the old workings will also aid in establishing proper sites for future drilling.

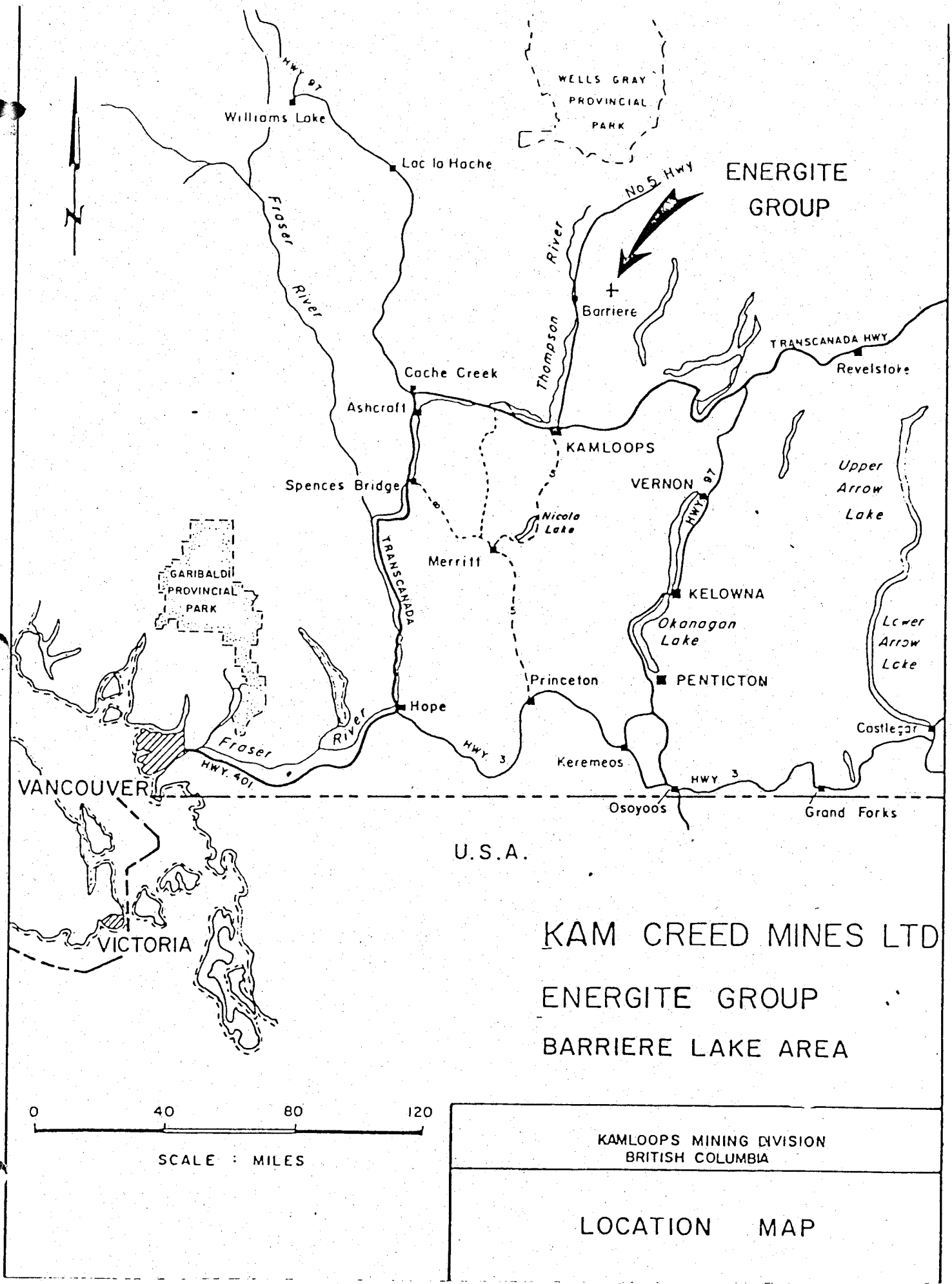
COST BREAKDOWN

Diamond Drilling; Sept.13-20,1984 B.Q. size core, 578 ft. @ \$25/ft. (including mob.and demob.)	Cost \$14,450.00
Consulting Geologist; Sept. 8,9 &16/84 3 days @ \$300.00/day	900.00
Report Writing including typing, and maps.	1,200.00
Total	<hr/> <u>\$16,550.00</u>

Respectfully submitted,

Dem Cardinal

Mr. D.G. Cardinal, P.Geol.
Consulting Geologist.



KAM CREED MINES LTD
 ENERGITE GROUP
 BARRIERE LAKE AREA

KAMLOOPS MINING DIVISION
 BRITISH COLUMBIA

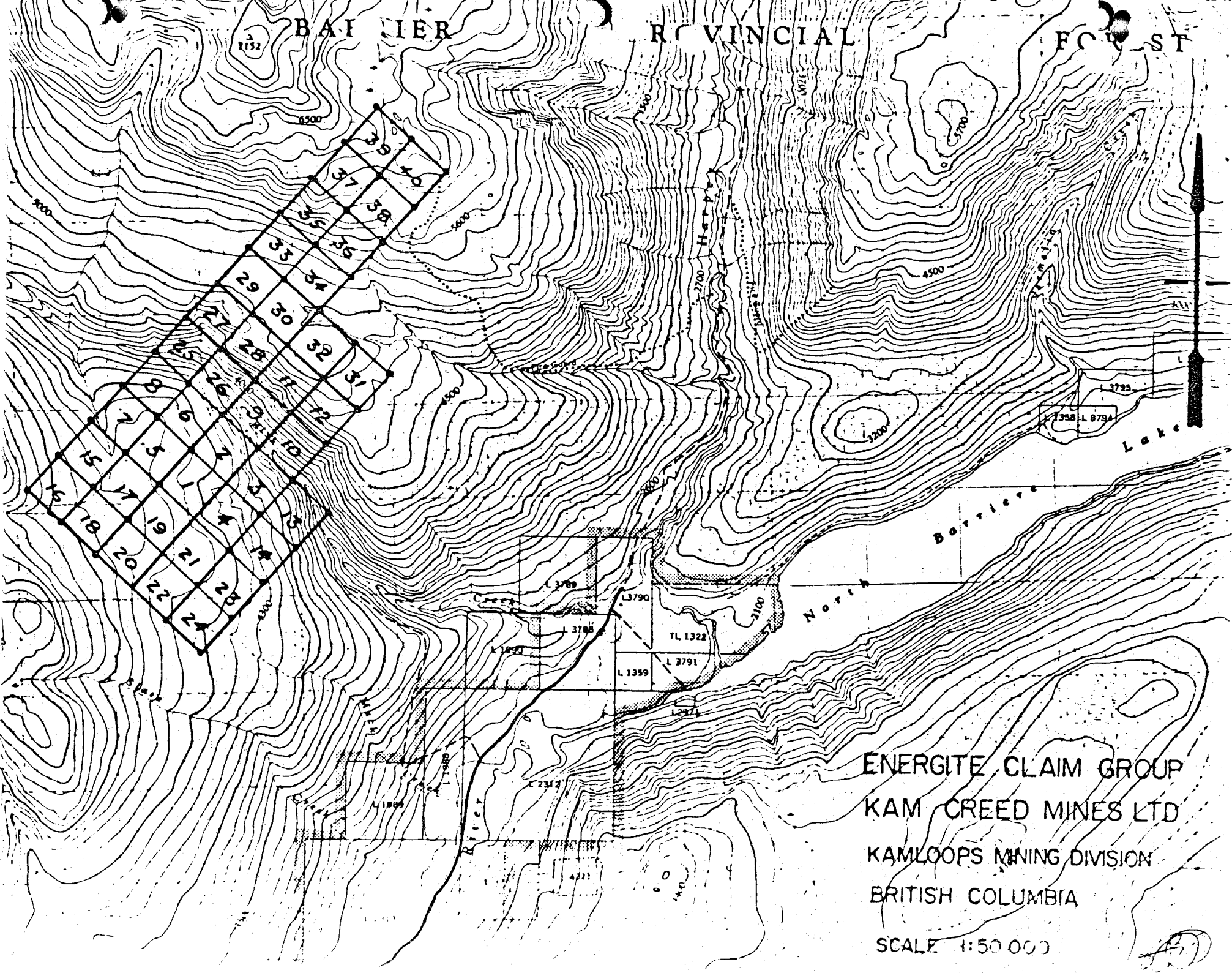
LOCATION MAP

Fig. 1

BARRIER

PROVINCIAL

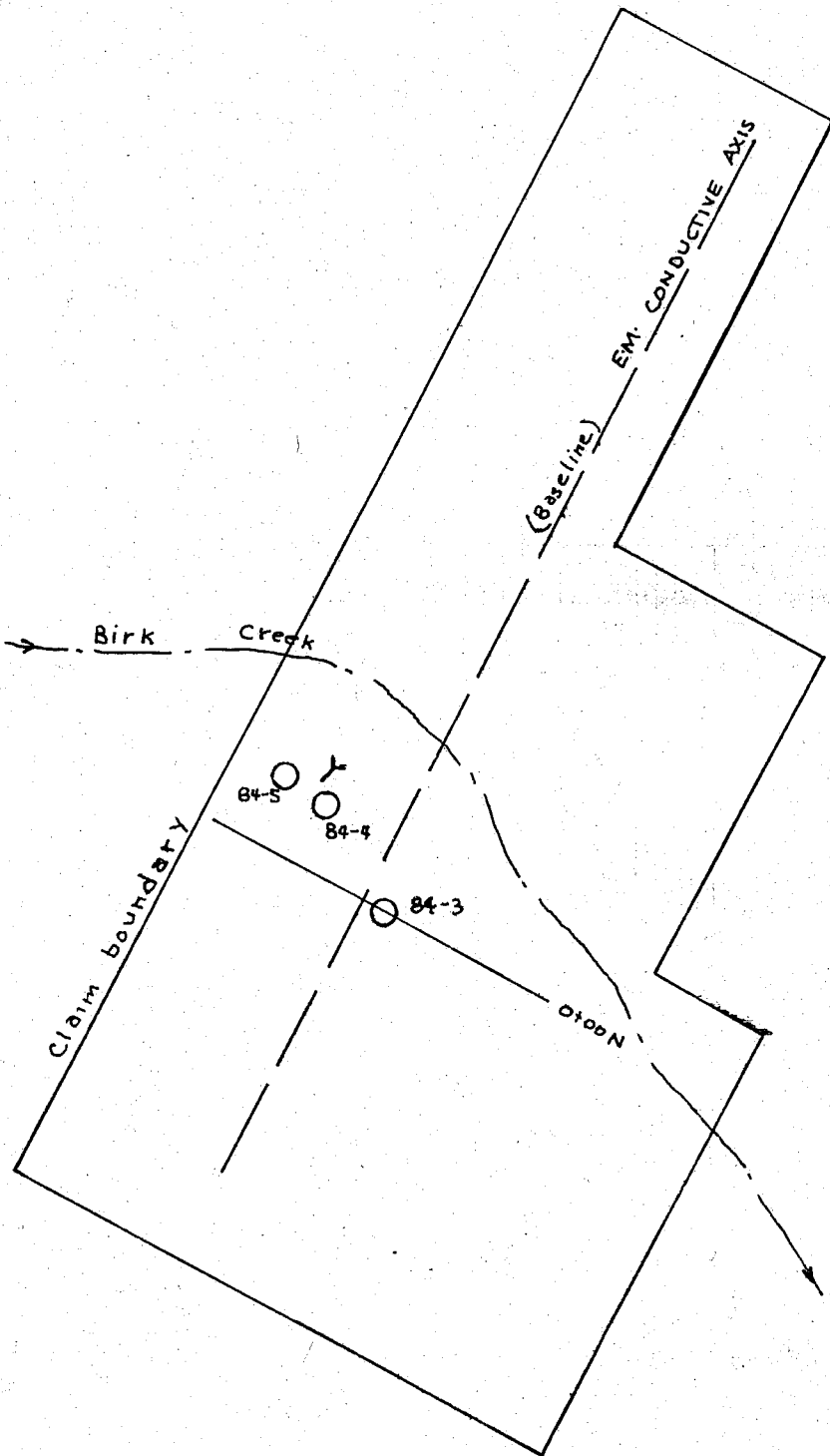
FOREST



ENERGITE CLAIM GROUP
 KAM CREED MINES LTD
 KAMLOOPS MINING DIVISION
 BRITISH COLUMBIA

SCALE 1:50 000

AD



ENERGITE CLAIM GROUP
KAM CREED MINES LTD

1984 DRILL HOLE LOCATION MAP

○ 84-3 Drill station

Y Adit

Scale 1/2 in. = 1 mile.

Fig. 3

D.G.C.

ECO-TECH LABORATORIES LTD.
R.R. # 2, 10041 E. Trans Canada Hwy.
KAMLOOPS, B.C. V2C 2J3
PHONE: 573-5700

September 20, 1984

CERTIFICATE OF ANALYSIS

CLIENT: Kamcreed Mines Ltd.
P. O. Box 668
SICAMOUS, B. C.
VOE 2V0

ATTENTION: Mr. Richard Rabbitt

SAMPLE IDENTIFICATION: 9 drill core samples received September 17, 1984

CERTIFICATE OF ANALYSIS NUMBER: ET352

<u>Description</u>	<u>Au (oz/T)</u>	<u>Ag (oz/T)</u>
27176	0.058	0.45
77	0.002	0.08
78	0.001	0.10
79	0.003	0.08
80	0.004	0.13
27181	0.001	0.11
82	0.002	0.13
83	0.001	0.14
84	0.017	0.37

ECO-TECH LABORATORIES LTD.
Thomas J. Fletcher, B.Sc.
Chief Assayer

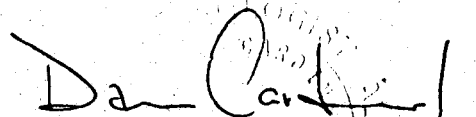
TJF/ml1

APPENDIX I

Certificate:

I, Daniel G. Cardinal of the Municipality of Hope, British Columbia, do hereby certify that:

1. I am a professional geologist residing in Hope, B.C., mailing address; P.O. Box 594, Hope, B.C. VOX 1L0.
2. I am a graduate of the University of Alberta and a member in good standing with the Association of Professional Engineers, Geologists and Geophysicists of Alberta (APEGGA).
3. Since 1970, I have been actively involved in the Canadian mining industry, both as a project manager and consulting geologist for major and junior resource companies.
4. The findings in the report are derived from data acknowledged and from personal examination of the property during September 8, 9, and 16, 1984.
5. The full text of the report and accompanying maps may be reproduced in the Company's Prospectus or Statement of Material Facts.



Daniel G. Cardinal, P. Geol.

APPENDIX II

References:

Report of the Minister of Mines, B.C., 1934, 1936

Report on Energite Group, C.T. Pasieka, P.Eng. Oct., 1980

Preliminary Map No. 56 - Geology of the Adams Plateau -
Clearwater Area, P. Schiarizza and V.A. Preto, 1984.